

# owners manual

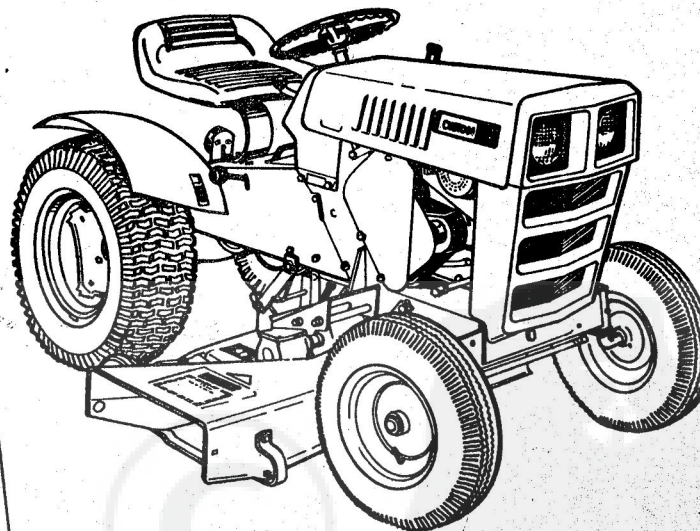
## 38 INCH ROTARY MOWER

FOR CUSTOM TRACTORS

**MODEL NO.  
917.250520  
22100**

**CAUTION:**  
Read Rules for  
Safe Operation  
and Instructions  
Carefully

- Assembly
- Operating
- Maintenance
- Repair Parts



**PUBL. AP/3199-2/71**

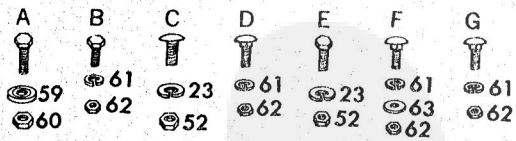
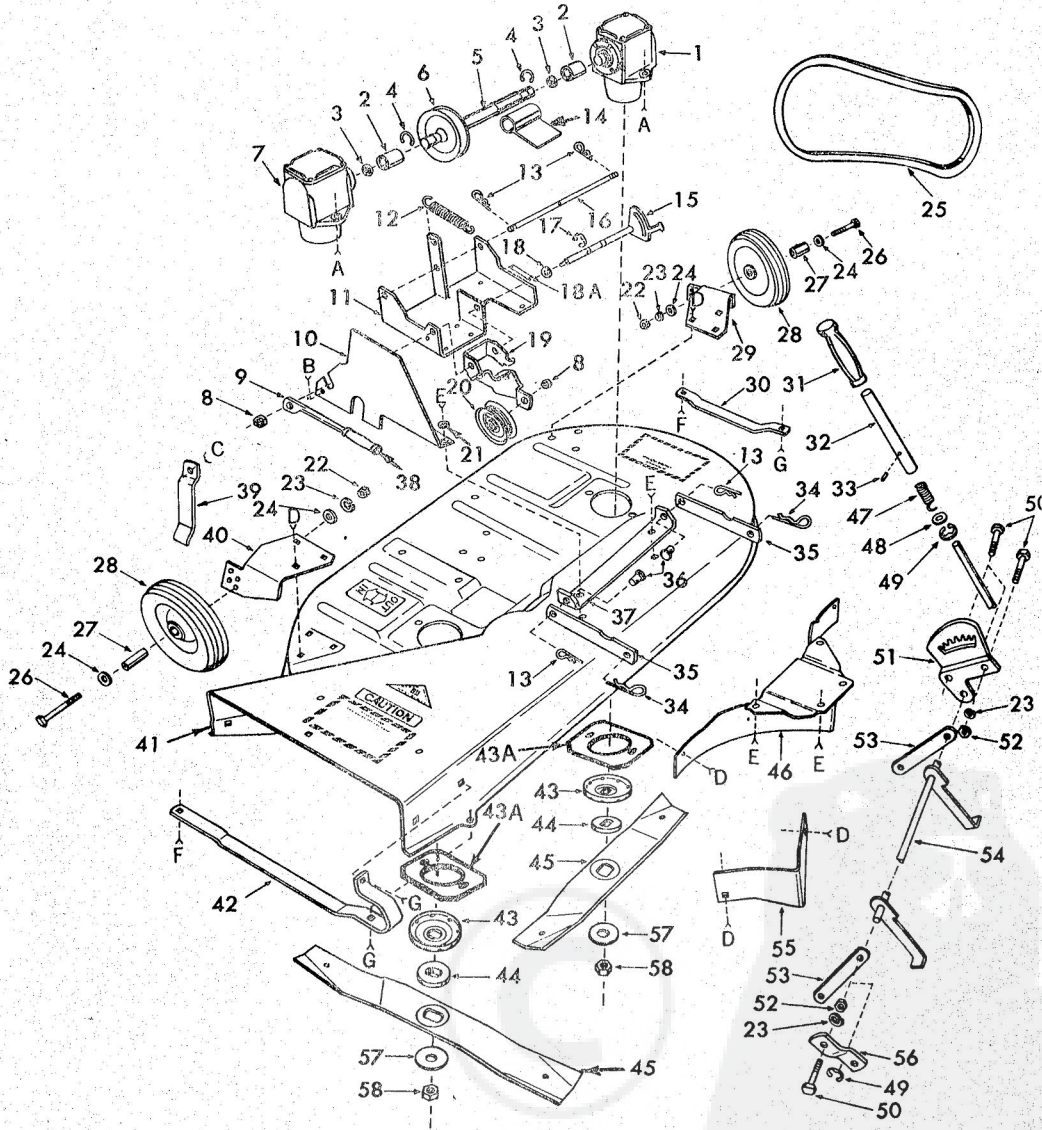
IMPORTATEUR GENERAL POUR LA BELGIQUE ET LE GRAND-  
DUCHE DE LUXEMBOURG

**S. B. M. A.**

DEPARTEMENT MOTOCULTURE :  
1190 BRUXELLES - TEL : 02 / 76.00.90

Rue de Hal .157

LOWER ATTACHMENT--MODEL NUMBER 917.250520

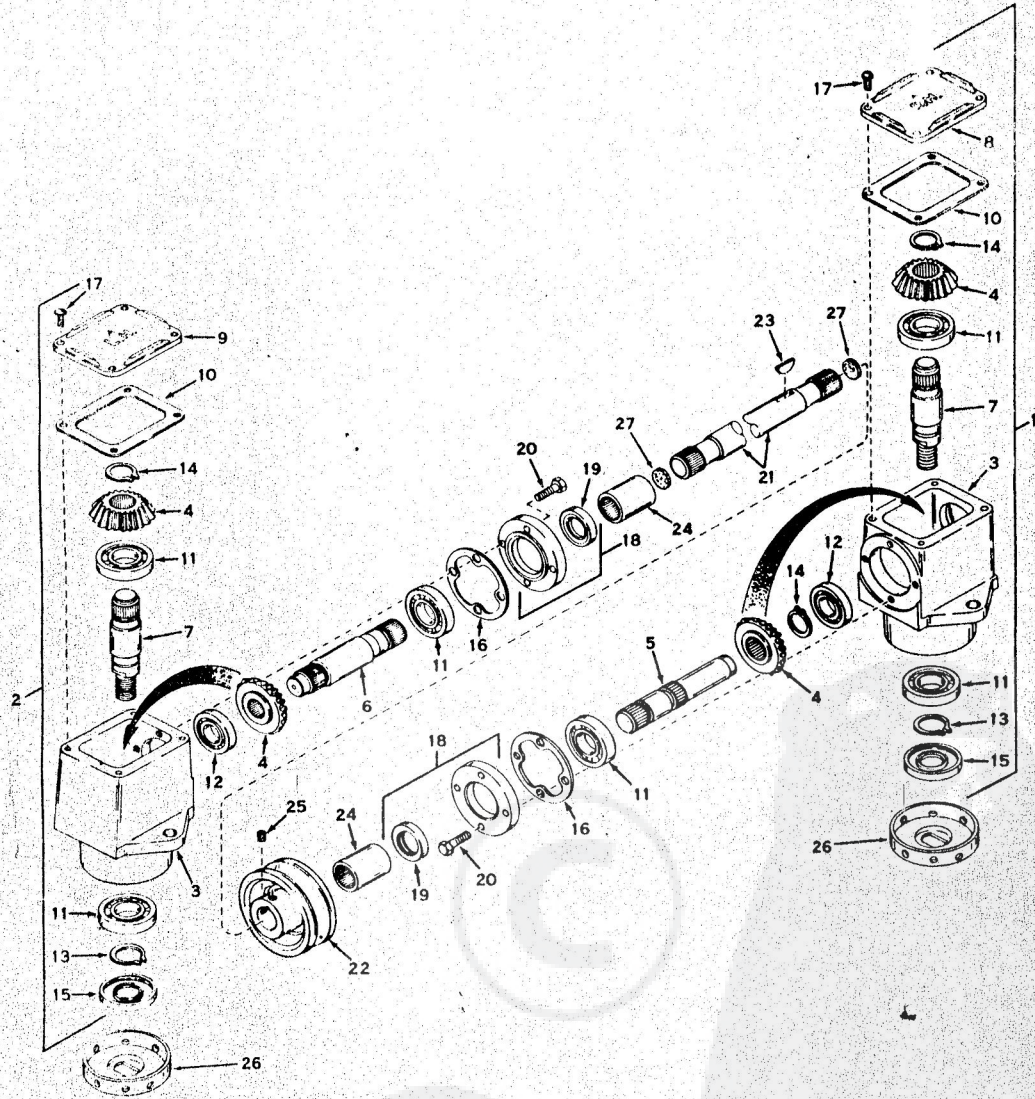




ATTACHMENT---MODEL NUMBER 917. 250520

KEY NO.	PART NO.	DESCRIPTION	KEY NO.	PART NO.	DESCRIPTION
1	794042	Head Assembly L.H.	36	1032R	Pivot Pin
2	786028	Coupling - Input Shaft	37	970R	Front Housing Mount
3	788039	Disc, Felt	38	4379H	Shift Handle Grip
4	5231H	Crescent Ring	39	8310H1	Pulley Guard Guide
5	776085	Shaft, Input Connector	40	626A284	Wheel Bracket Assembly R.H.
6	786059	Sheave	41	759R	Mower Housing
7	794041	Head Assembly R. H.	42	960R	Runner R.H.
8	548P	Hex Jam Nut 3/8 - 24	43	786044	Shield
9	626A271	Blade Clutch Handle	43A	1567R	Mandrel Plate
10	7717H2	Pulley Guard	44	1044R	Blade Safety Drive Washer
11	626A270	Housing Mount	45	965R	Blade
12	974R	Blade Clutch Spring	46	626A286	Blade Shield Assembly
13	4939M	Retainer Spring	47	5107H	Lifter Spring
14	5028H	Wiper Sleeve	48	1552P	Washer 49/64 x 1 1/4 x 16 Ga.
15	626A272	Control Arm Assembly	49	5000P	E-Ring Truarc 5133-75
16	957R	Pivot Shaft	50	3023P	Hex Bolt 3/8 - 16 x 1
17	5002P	E - Ring Truarc 5133-50	51	7876H	Lifter Quadrant
18	1545P	Washer 17/32 x 1 x 16 Ga.	52	501P	Hex Nut 3/8 - 16
18A	-----	Model Plate	53	8720H	Pivot Link (rear)
19	971R	Idler Bracket	54	626A159	Lifter Arm Assembly
20	5146H	Idler Pulley	55	968R	Blade Shield Outlet
21	1513P	Washer 13/32 x 13/16 x 16 Ga.	56	5086H	Lifter Bracket
22	515P	Hex Nut 3/8 - 24	57	9914M	Spring Washer
23	1004P	Lockwasher 3/8	58	539P	Nylock Nut 5/8 - 18
24	1511P	Washer 3/8 x 7/8 x 14 Ga.	59	1557P	Washer 13/32 x 13/16 x 11 Ga.
25	1563R	V-Belt	60	545P	Crown Lock Nut 3/8 - 16
26	3199P	Hex Bolt 3/8-24 x 2 3/4 Grade 5 H.T.	61	1003P	Lockwasher 5/16
27	7375H	Bushing	62	504P	Hex Nut 5/16 - 18
28	9536H	Wheel, Gauge	63	1537P	Washer 11/32 x 11/16 x 16 Ga.
29	626A283	Wheel Bracket Assembly L.H.	A	3137P	Hex Bolt 3/8 - 16 x 1 1/4 Grade 5 H.T.
30	959R	Runner L.H.	B	3159P	Hex Bolt 5/16 - 18 x 7/8
31	4938H	Handle Grip	C	3233P	Slotted Rd. Hd. Mach. Screw 3/8 - 16 x 3/4
32	5063H	Lifter Tube	D	16P	Carriage Bolt 5/16 - 18 x 3/4
33	1306H	Roll Pin 1/4 x 1 1/2	E	3023P	Hex Bolt 3/8 - 16 x 1
34	4940M	Retainer Spring	F	17P	Carriage Bolt 5/16 - 18 x 1
35	5050H	Pivot Link (front)	G	17P	Carriage Bolt 5/16 - 18 x 1
				1568R	Instruction Book and Parts List

R ATTACHMENT --- MODEL NUMBER 917.250520





CHMENT--MODEL NUMBER 917.250520

KEY NO.	PART NO.	DESCRIPTION	KEY NO.	PART NO.	DESCRIPTION
1	794041	Head Assy., Right Hand (Incl. Nos. 3, 4, 5, 7, 8 and 10 thru 20)	15	788029	Seal, Oil
2	794042	Head Assy., Left Hand (Incl. Nos. 3, 4, 6, 7 and 9 thru 20)	16	788030	Gasket, Cap
3	770026	Housing, Right Angle Drive	17	792025	Screw, Rd. Hd. Self Tap, 10 - 24 x 1/2
4	778046	Gear, Miter	18	786029	Cap and Seal Assy., Retainer (Incl. Nos. 19 and 20)
5	776040	Shaft, Input Pinion	19	788031	Seal, Oil
6	776041	Shaft, Input Pinion	20	792026	Screw, Hex Hd. 1/4 - 20 x 7/8
7	776092	Shaft, Output	21	776085	Shaft, Input Connector
8	772034	Cover, Right Hand	22	786059	Sheave
9	772035	Cover, Left Hand	23	792047	Key, Woodruff, 3/16 x 3/4
10	788028	Gasket, Cover	24	786028	Coupling, Input Shaft
11	780034	Bearing, Ball	25	792027	Set Screw, Knurled Hd. Cup Pt., 5/16 - 24 x 1/4
12	780024	Bearing, Ball	26	786044	Shield
13	788019	Ring, Snap	27	788039	Disc, Felt
14	788018	Ring, Snap			

626 x 98