

REPAIR PARTS MANUAL
MODEL NO. 288160
Lawn Tractor



HOW TO USE THIS MANUAL

This manual is designed to provide the customer with a means to identify the parts on his/her tractor when ordering repair parts. The illustrations may or may not represent the actual assemblies; therefore, it is not recommended to use this manual as a guide to assemble or disassemble the tractor. Some hardware and parts are drawn larger in order to more readily identify them.

Each tractor has its own model number.

The model number for your tractor can be found on the fender under the seat.

When ordering parts, always give the following information:

- Product - "Tractor"
- Model Number - "288160"
- Part Number
- Part Description

TABLE OF CONTENTS

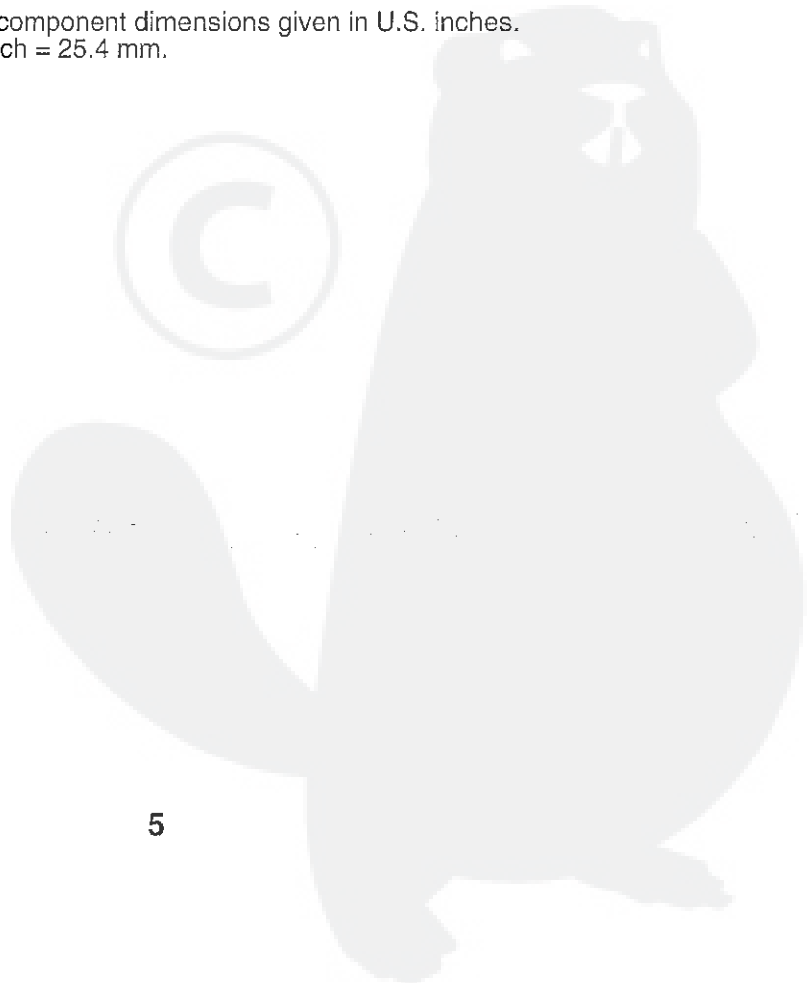
| | |
|---------------------------|------------|
| SCHEMATIC | 3 |
| ELECTRICAL..... | 4-5 |
| CHASSIS | 6-7 |
| DRIVE..... | 8-9 |
| ENGINE..... | 10-11 |
| STEERING | 12-13 |
| SEAT | 14 |
| DECALS..... | 15 |
| MOWER DECK | 16-17 |
| MOWER LIFT..... | 18-19 |
| TRANSAXLE BREAKDOWN | 20-21 |
| ENGINE BREAKDOWN..... | 22-26 |
| WARRANTY..... | BACK COVER |

TRACTOR - - MODEL NO. 917.288160

ELECTRICAL

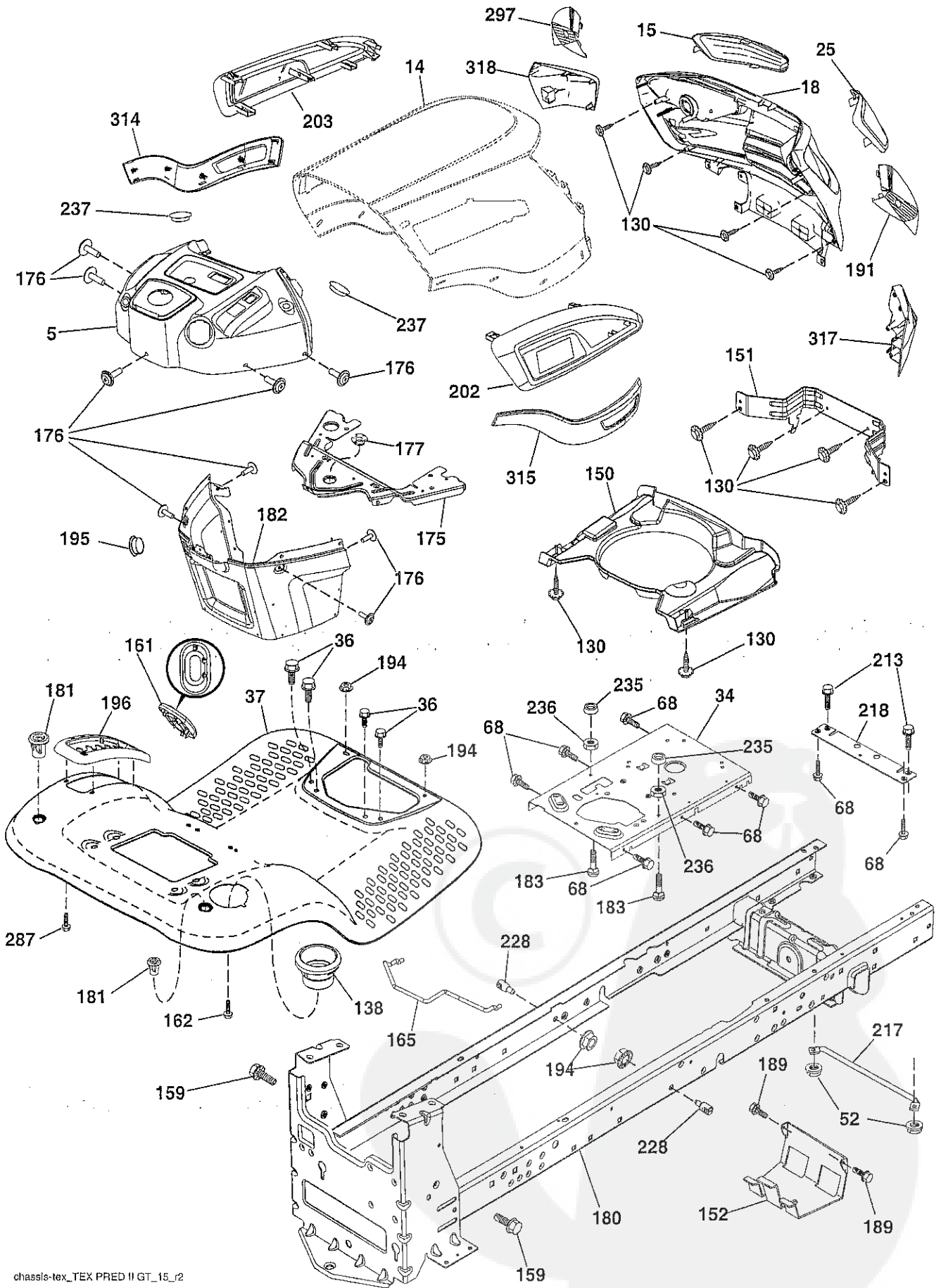
| KEY PART NO. | PART NO. | DESCRIPTION |
|--------------|----------|----------------------------------|
| 1 | 163465 | Battery |
| 2 | 74760412 | Bolt Hex Hd 1/4-20 unc x 3/4 |
| 8 | 186491 | Box Battery |
| 16 | 176138 | Switch Interlock Push-In |
| 21 | 400252 | Harness Socket Light w/4152J |
| 22 | 4152J | Bulb Light |
| 24 | 400253 | Cable Btry. |
| 25 | 412895 | Cable Starter |
| 26 | 175158 | Fuse |
| 27 | 73510400 | Nut Keps Hex 1/4-20 unc |
| 28 | 145491 | Cable, Ground |
| 29 | 401545 | Switch, Seat |
| 30 | 193350 | Switch, Ign |
| 33 | 411932 | Key/Chain |
| 34 | 110712X | Switch Light / Reset |
| 40 | 401098 | Harness Ign. Dash |
| 41 | 17720408 | Screw Thd Cut 1/4-20 x 1/2 |
| 42 | 131563 | Cover, Terminal |
| 43 | 192507 | Solenoid |
| 46 | 401763 | Gauge SRVCMNDR HRMTR |
| 55 | 17060512 | Screw Thdrol 5/16-18 x 3/4 TYTT |
| 71 | 194276 | Harness Ign. Chassis |
| 79 | 175242 | Bulbholder Asm. Incan Descent |
| 87 | 197802 | Switch Interlock Clutch Cable |
| 90 | 435395 | Cover Terminal Battery |
| 91 | 190270 | Strap Btry. |
| 99 | 17670412 | Screw Hexwsh Thdrol 1/4-20 x 3/4 |
| 100 | 19091416 | Washer 9/32 x 7/8 16 Ga. |
| 102 | 404454 | Harness Pigtail |
| 105 | 407568 | Switch Reverse |

NOTE: All component dimensions given in U.S. inches.
1 inch = 25.4 mm.



TRACTOR - - MODEL NO. 917.288160

CHASSIS AND ENCLOSURES



chassis-tes_TEX PRED II GT_15_r2

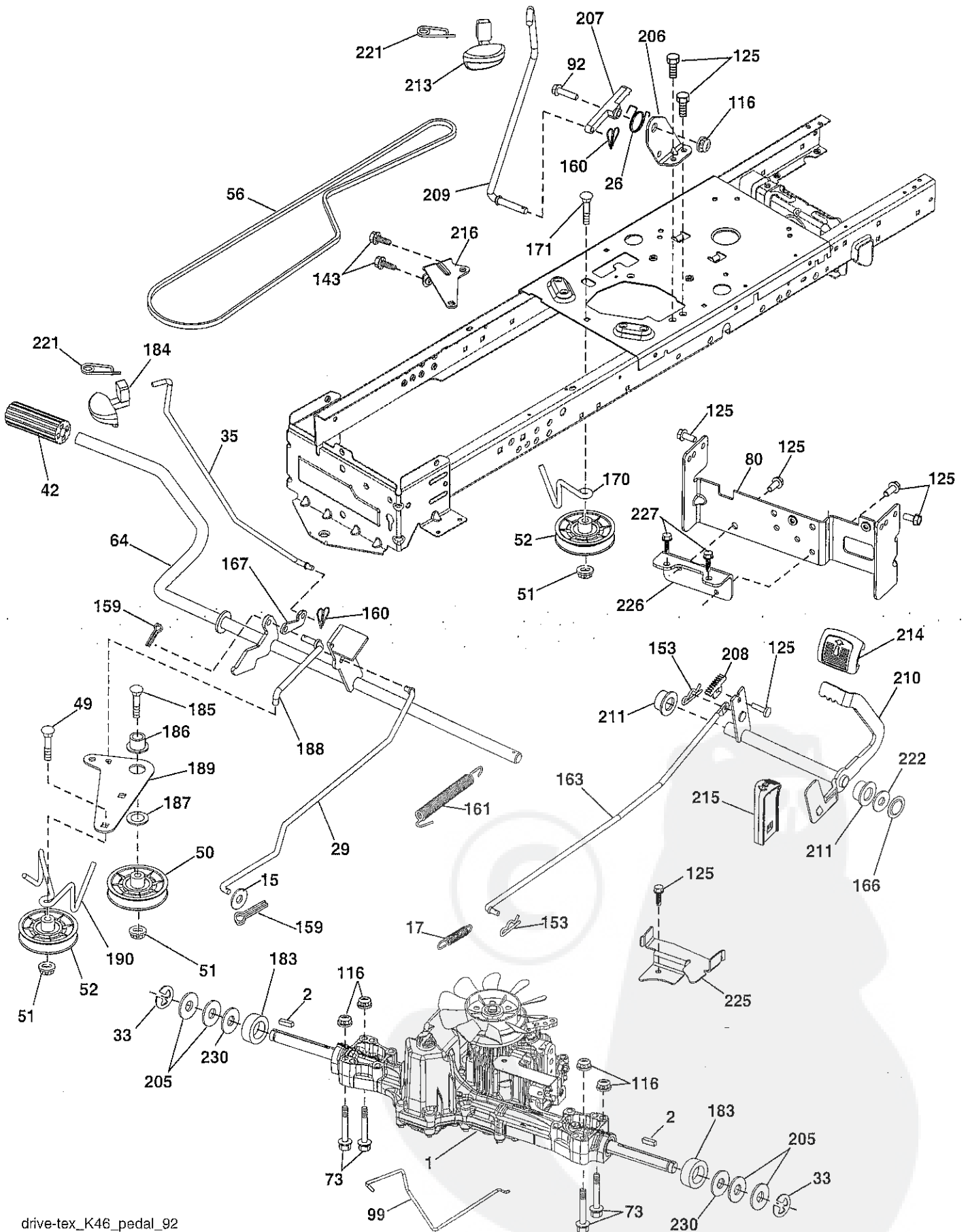
TRACTOR - - MODEL NO. 917.288160
CHASSIS AND ENCLOSURES

| KEY NO. | PART NO. | DESCRIPTION |
|---------|------------|----------------------------------|
| 5 | 421810X428 | Dash |
| 14 | 421154X615 | Hood |
| 15 | 421493X599 | Lens LH |
| 18 | 441721X428 | Grille |
| 25 | 421494X599 | Lens RH |
| 34 | 196125 | Plate Engine |
| 36 | 17060512 | Screw 5/16-18 x 3/4 |
| 37 | 414878X615 | Fender |
| 52 | 73680500 | Nut Crown Lock 5/16-18 |
| 68 | 17490508 | Screw Thdrol 5/16-18 x 1/2 |
| 130 | 416358 | Screw # 10 x .750 BOS Thread |
| 138 | 193224X428 | Cupholder |
| 150 | 199411 | Duct Heat Hood |
| 151 | 196332 | Bracket Pivot |
| 152 | 199535 | Shield Browning/Debris |
| 159 | 17000612 | Screw Hexwsh Thdrol 3/8-16 x 3/4 |
| 161 | 193229X428 | Window Fuel |
| 162 | 142432 | Screw Hex Wsh Hi-Lo 1/4 x 1/2 |
| 165 | 196826 | Support Tank Rear |
| 175 | 196304 | Crossmember |
| 176 | 400776 | Screw 10-24 x 5/8 Wshd Qdrx |
| 177 | 195227 | Bushing Steering |
| 180 | 195457 | Chassis |
| 181 | 193102X428 | Bushing Mtg. Fender Crgo. |
| 182 | 406859 | Dash Lower |
| 183 | 74520520 | Bolt 5/16-18 x 1-1/4 |
| 189 | 17000512 | Screw 5/16 - 18 x 3/4 |
| 191 | 425407 | Insert Reflective RH |
| 194 | 73900500 | Nut Lock Hex Flange 5/16-18 |
| 195 | 401556X428 | Plug Hole Dash 12V Adapter |
| 196 | 414579 | Console Asm. Deck Lift |
| 202 | 441724X428 | Vent Side Hood RH |
| 203 | 441725X428 | Vent Side Hood LH |
| 213 | 74760512 | Bolt hex HD 5/16-18 unc x 3/4 |
| 217 | 409167 | Rod Pivot Chassis |
| 218 | 196395 | X piece hood stop |
| 228 | 195161 | Stud Fastener |
| 235 | 406129 | Spacer Fender |
| 236 | 73930500 | Nut Center Lock 5/16-18 |
| 237 | 403704 | Plug Mount Cargo |
| 287 | 17600406 | Screw Hex Washhead 1/4-20 x 3/8 |
| 297 | 425406 | Insert Reflective LH |
| 314 | 441669 | Skirt SD LH |
| 315 | 441668 | Skirt SD RH |
| 317 | 421258X615 | Cap Corner LH |
| 318 | 421257X615 | Cap Corner RH |

NOTE: All component dimensions given in U.S. inches.
1 inch = 25.4 mm.

TRACTOR -- MODEL NO. 917.288160

DRIVE



drive-tex_K46_pedal_92

TRACTOR - - MODEL NO. 917.288160

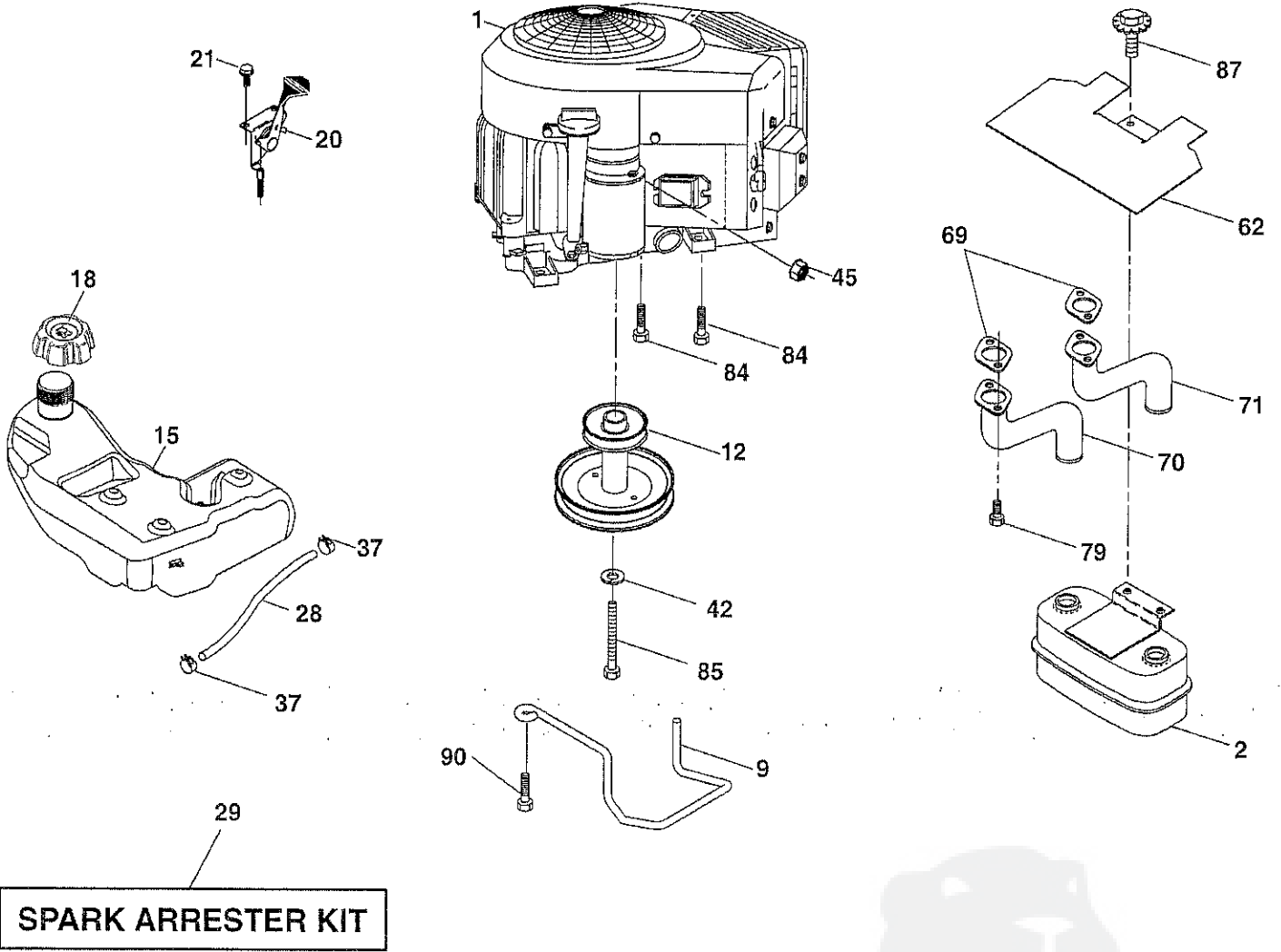
DRIVE

| KEY NO. | PART NO. | DESCRIPTION | KEY NO. | PART NO. | DESCRIPTION |
|---------|----------|---|---------|------------|-------------------------------|
| 1 | --- | Transaxle, TUFFTORQ K46 BT (426120) (See transaxle breakdown) | 183 | 137057 | Spacer Split |
| 2 | 123583X | Key | 184 | 196439X667 | Handle Parking Brake |
| 15 | 19131316 | Washer 13/32 x 13/16 x 16 Ga. | 185 | 72110622 | Bolt 3/8-16 x 2-3/4 Gr. 5 |
| 17 | 413678 | Spring, Brake | 186 | 194321 | Spacer Retainer |
| 26 | 199679 | Spring Return Cruise | 187 | 19133210 | Washer |
| 29 | 403806 | Rod, Brake | 188 | 194323 | Link Clutch Ground Drive |
| 33 | 12000001 | Ring E | 189 | 194317 | Bellcrank Ground Drive |
| 35 | 435486 | Rod, Brake, Park | 190 | 194318 | Keeper Bellcrank Ground Drive |
| 42 | 8883R | Cover, Foot Pedal | 205 | 121748X | Washer |
| 49 | 72110614 | Bolt | 206 | 197867 | Bracket Mount Latch Cruise |
| 50 | 194327 | Pulley Idler Flat | 207 | 197868 | Latch Control Cruise |
| 51 | 73900600 | Lock Nut 3/8-16 | 208 | 197869 | Gear Sector Control Cruise |
| 52 | 194326 | Idler V-Groove 910" Offset | 209 | 199592 | Rod Control Cruise |
| 56 | 130969 | V-Belt, Drive | 210 | 400980 | Rocker Asm. Pedal Control |
| 64 | 197865 | Shaft Asm. Pedal Brake Control | 211 | 120183X | Bearing Nylon |
| 73 | 74490544 | Bolt 5/16-18 Gr. 5 | 213 | 196441X428 | Knob Control Cruise |
| 80 | 440619 | Strap Torque | 214 | 421263 | Pedal Forward |
| 92 | 74760520 | Bolt Fin Hex 5/16-18 unc x 1.25 | 215 | 197301X428 | Pedal Reverse |
| 99 | 415742 | Rod Spring Bypass | 216 | 196131 | Bracket Pulley Idler |
| 116 | 73900500 | Nut Lock Hex Flange 5/16-18 | 221 | 403187 | Retainer Spring Clip Handle |
| 125 | 17000512 | Screw 5/16-18 x 3/4 | 222 | 79212010 | Washer 21/32 x 1-1/4 x 10 Ga. |
| 143 | 17490508 | Screw 5/16-18 x 1/2 | 225 | 403319 | Keeper Belt Trans. |
| 153 | 4497H | Retainer Spring | 226 | 401564 | Bracket Mount Torque |
| 159 | 76020412 | Pin Cotter 1/8 x 3/4 | 227 | 17490512 | Screw Thdrol 5/16-18 x 3/4 |
| 160 | 169484 | Retainer Clip | 230 | 188967 | Washer |
| 161 | 105709X | Spring, Return, Clutch | | | |
| 163 | 401034 | Rod Pedal Control | | | |
| 166 | 429164 | Nut Push .625 | | | |
| 167 | 405257 | Latch Brake Parking | | | |
| 170 | 194322 | Keeper Belt Centerspan | | | |
| 171 | 72110616 | Bolt Rd. Hd. Sq. NK. 3/8-16 unc x 2 | | | |

NOTE: All component dimensions given in U.S. inches
1 inch = 25.4 mm

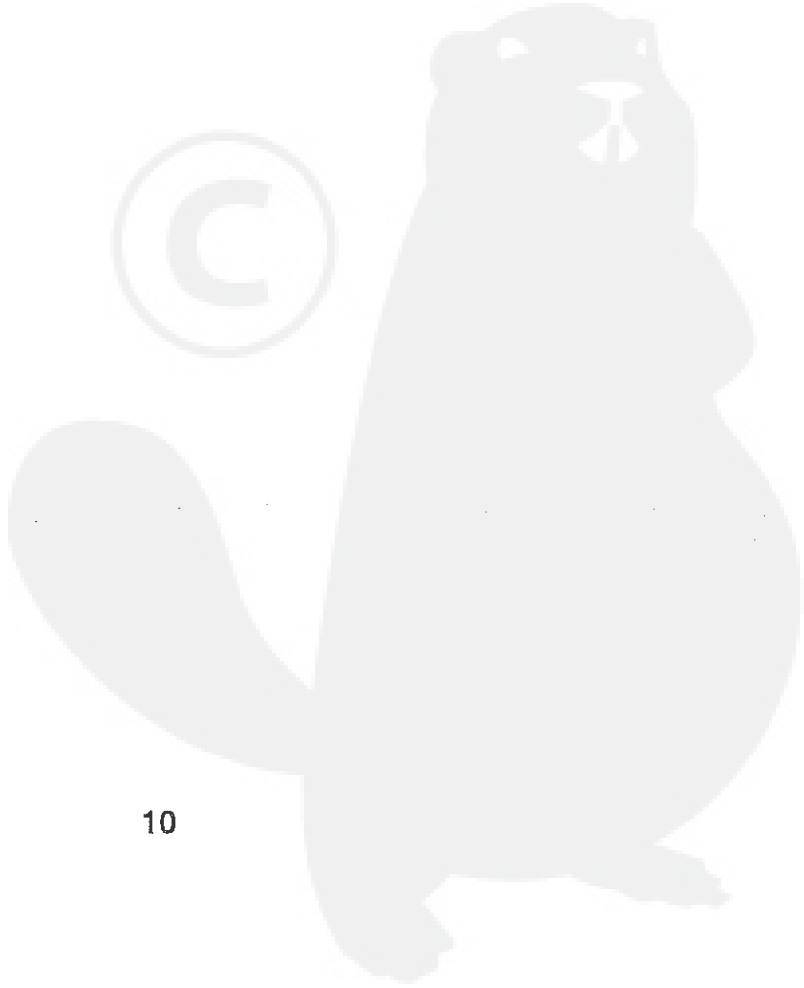
TRACTOR - - MODEL NO. 917.288160

ENGINE



SPARK ARRESTER KIT

engine-tex_bs-2cyl_43



TRACTOR - - MODEL NO. 917.288160

ENGINE

| KEY PART NO. | NO. | DESCRIPTION |
|--------------|------------|---|
| 1 | --- | Engine B&S Model No. 445677-2344-B1 (438233) (See Engine Breakdown) |
| 2 | 149723 | Muffler |
| 9 | 194320 | Keeper Belt Engine |
| 12 | 405471 | Pulley Engine |
| 15 | 438080 | Tank Fuel |
| 18 | 430214 | Cap Asm |
| 20 | 421473X428 | Control Throttle |
| 21 | 416358 | Screw 10 x .750 BOS Thread |
| 28 | 8543R | Fuel Line |
| 29 | 137180 | Spark Arrester Kit |
| 37 | 123487X | Clamp Hose |
| 42 | 10040700 | Washer Lock 7/16 |
| 45 | 73510400 | Nut Keps Hex 1/4-20 unc |
| 62 | 434017 | Shield Heat Muffler |
| 69 | 165391 | Gasket |
| 70 | 159955 | Exhaust Tube LH |
| 71 | 160589 | Exhaust Tube RH |
| 79 | 183906 | Screw 5/16-18 x .75 |
| 84 | 17060620 | Screw 3/8-16 x 1-1/4 |
| 85 | 173937 | Bolt Hex 7/16-20 x 4 x Gr. 5-1.5 |
| 87 | 171877 | Bolt 5/16-18 unc x 3/4 w/Sems |
| 90 | 17000616 | Screw 3/8-16 x 1.0 |

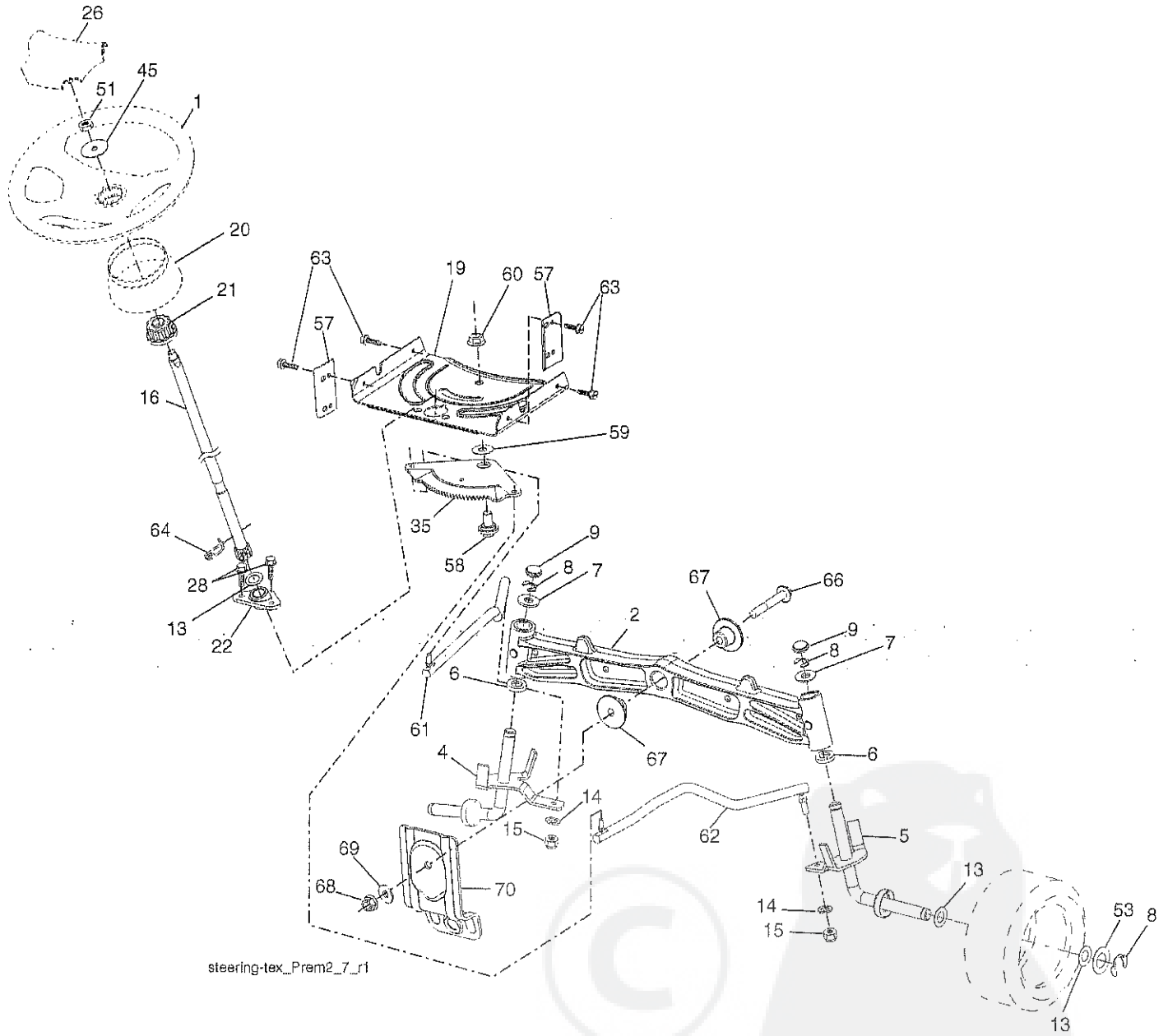
NOTE: All component dimensions given in U.S. inches
1 inch = 25.4 mm

Engine Power Rating Information

The gross power rating for individual gas engine models is labeled in accordance with SAE (Society of Automotive Engineers) code J1940 (Small Engine Power & Torque Rating Procedure), and rating performance has been obtained and corrected in accordance with SAE J1995 (Revision 2002-05). Torque values are derived at 3060 RPM; horsepower values are derived at 3600 RPM. Actual gross engine power will be lower and is affected by, among other things, ambient operating conditions and engine-to-engine variability. Given both the wide array of products on which engines are placed and the variety of environmental issues applicable to operating the equipment, the gas engine will not develop the rated gross power when used in a given piece of power equipment (actual "on-site" or net power). This difference is due to a variety of factors including, but not limited to, accessories (air cleaner, exhaust, charging, cooling, carburetor, fuel pump, etc.), application limitations, ambient operating conditions (temperature, humidity, altitude), and engine-to-engine variability. Due to manufacturing and capacity limitations, Briggs & Stratton may substitute an engine of higher rated power for this Series engine.

TRACTOR - - MODEL NO. 917.288160

STEERING ASSEMBLY



TRACTOR - - MODEL NO. 917.288160

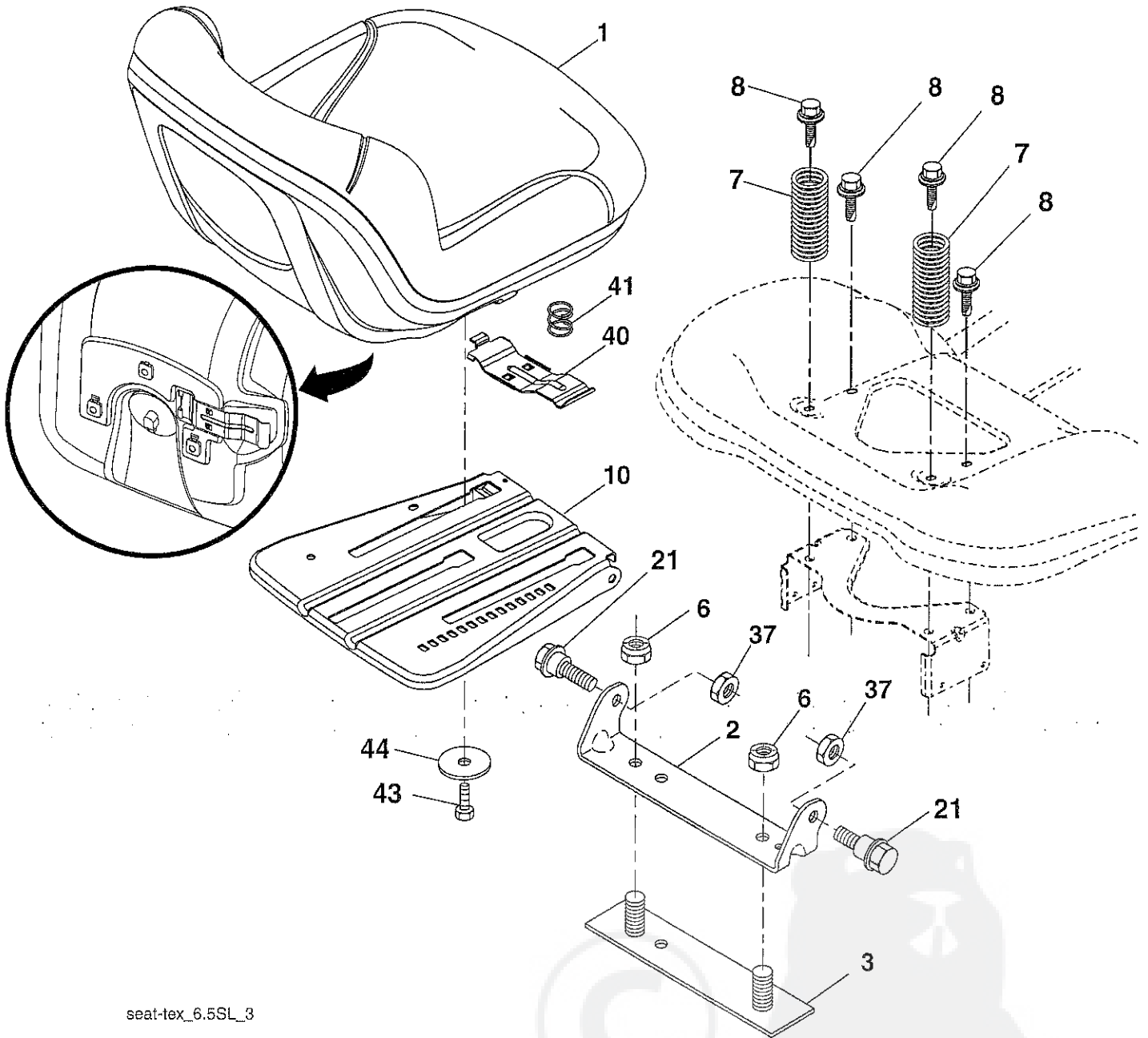
STEERING ASSEMBLY

| KEY PART NO. | PART NO. | DESCRIPTION |
|--------------|------------|-------------------------------------|
| 1 | 414803X428 | Wheel, Steering |
| 2 | 195689 | Axle Asm., Front |
| 4 | 403087 | Spindle Asm., LH |
| 5 | 403088 | Spindle Asm., RH |
| 6 | 6266H | Washer Thrust 0.75 x 1.23 |
| 7 | 121748X | Washer 25/32 x 1-5/8 x 16 Ga. |
| 8 | 12000029 | Ring, Clip #T5304-75 |
| 9 | 184946X667 | Cap, Spindle |
| 13 | 121749X | Washer 25/32 x 1-1/4 x 16 Ga. |
| 14 | 10040600 | Washer Lock 3/8 |
| 15 | 73540600 | Nut, Crown Lock 3/8-24 unf |
| 16 | 194746 | Shaft Steering |
| 19 | 194729 | Plate Steering |
| 20 | 199676X428 | Boot, Steering |
| 21 | 186737 | Adapter, Wheel Steering |
| 22 | 420537 | Steering Support Lower |
| 26 | 414852X428 | Insert, Wheel Steering |
| 28 | 17000612 | Screw 3/8-16 x 3/4 |
| 35 | 194732 | Gear, Sector Plate |
| 45 | 19183812 | Washer 9/16 I.D. x 2-3/8 O.D. |
| 51 | 73940800 | Nut Hex Jam Toplock 1/2-20 |
| 53 | 188967 | Washer Hardened .793 x 1.637 x .060 |
| 57 | 407465 | Bracket Upstop |
| 58 | 194747 | Bolt Shoulder Sector Pivot CFM |
| 59 | 194748 | Washer Thrust Sector Steering |
| 60 | 73971000 | Nut Flange Lock 5/8-11 |
| 61 | 194740 | Draglink, LH |
| 62 | 194741 | Draglink, RH |
| 63 | 17000512 | Screw 5/16-18 x 3/4 |
| 64 | 199849 | Retainer Clip Spring Steering |
| 66 | 71020748 | Bolt Hex Fghd 7/16-14 x 3 Serr |
| 67 | 194737 | Bushing PM Front Axle |
| 68 | 73900700 | Nut Lock Flange 7/16-14 Gr. 5 |
| 69 | 199162 | Washer 1.5 x .505 x .118 |
| 70 | 196197 | Bracket Deck Susp. Front |

NOTE: All component dimensions given in U.S. inches.
1 inch = 25.4 mm.

TRACTOR - - MODEL NO. 917.288160

SEAT ASSEMBLY



seat-tex_6.5SL_3

KEY PART NO. NO.

DESCRIPTION

| | | |
|----|----------|-------------------------------|
| 1 | 423645 | Seat |
| 2 | 180166 | Bracket Pivot Fender |
| 3 | 140675 | Strap, Asm Fender |
| 6 | 73800500 | Nut, Lock 5/16-18 unc PL |
| 7 | 124181X | Spring, Seat Cprsn |
| 8 | 171877 | Bolt 5/16-18 unc x 3/4 w/Sems |
| 10 | 196977 | Pan, Seat |
| 21 | 171852 | Bolt, Shoulder 5/16-18 |

KEY PART NO. NO.

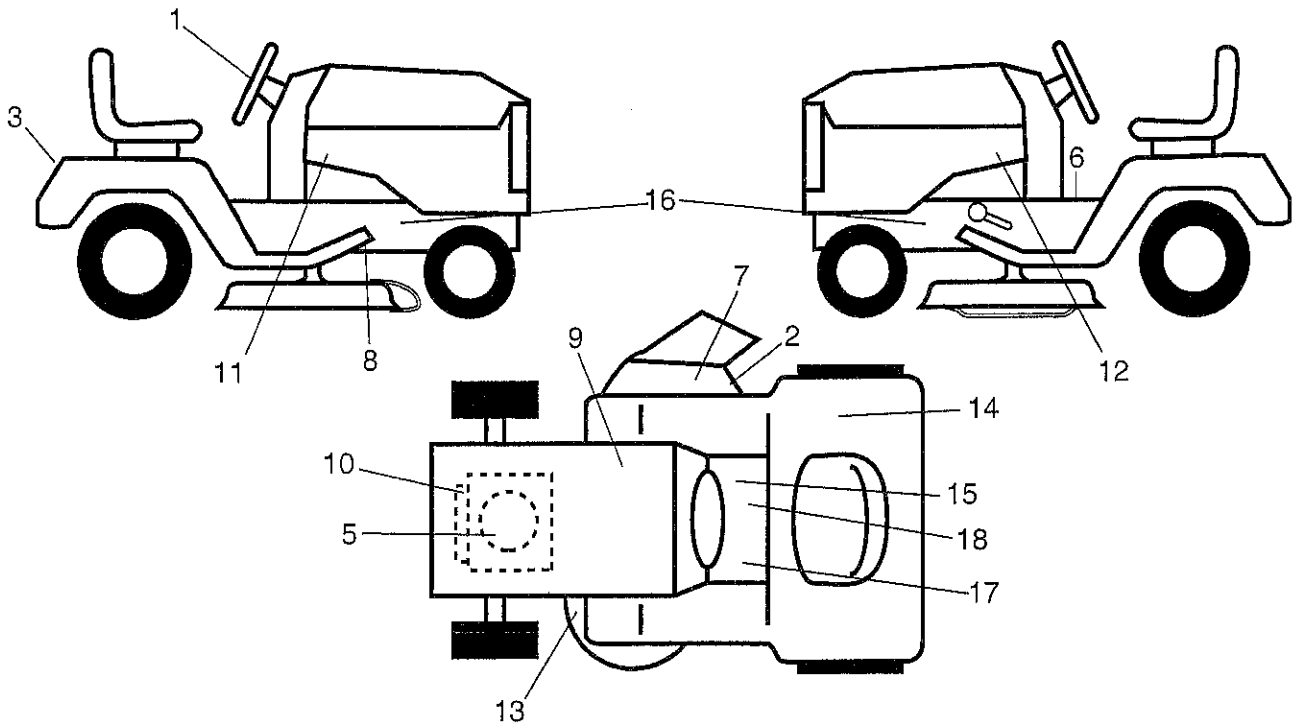
DESCRIPTION

| | | |
|----|----------|-------------------------------|
| 37 | 73800600 | Nut, Lock 5/16-18 unc |
| 40 | 197661 | Handle Slide Seat |
| 41 | 198200 | Spring Latch Seat |
| 43 | 74760612 | Bolt 3/8-16 x 3/4 |
| 44 | 19133812 | Washer 13/32 x 2-3/8 x 12 Ga. |

NOTE: All component dimensions given in U.S. inches.
1 inch = 25.4 mm

TRACTOR -- MODEL NO. 917.288160

DECALS



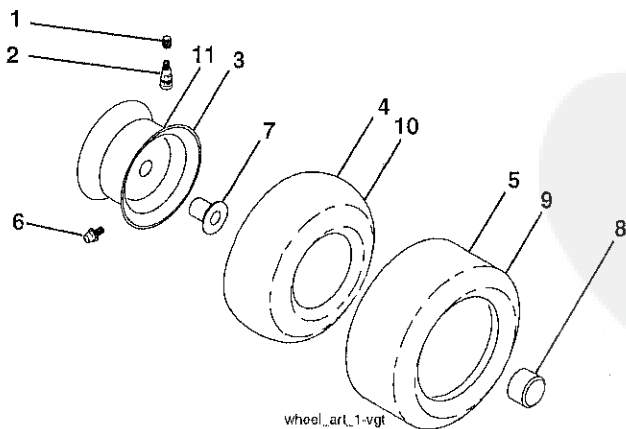
KEY PART NO. NO.

| KEY PART NO. | NO. | DESCRIPTION |
|--------------|--------|-------------------------------|
| 1 | 439525 | Decal, Steering |
| 2 | 196357 | Decal, Reflector Warning |
| 3 | 441121 | Decal, Fender |
| 5 | 442677 | Decal, Engine HP |
| 6 | 400389 | Decal, Fender Warning |
| 7 | 182166 | Decal, Cut Finger |
| 8 | 421534 | Decal, V-Belt Schematic Drive |
| 9 | 145005 | Decal, Battery Warning |
| 10 | 196841 | Decal, Warning Engine |
| 11 | 441222 | Decal, Hood Side Panel RH |
| 12 | 441223 | Decal, Hood Side Panel LH |
| 13 | 160396 | Decal, Mower V-Belt SCH. |
| 14 | 180432 | Decal, Fender |

KEY PART NO. NO.

| KEY PART NO. | NO. | DESCRIPTION |
|--------------|------------|-----------------------------|
| 15 | 178302 | Decal, Operator Cruise |
| 16 | 159736 | Decal, Hot Muffler |
| 17 | 159737 | Decal, Brake/Clutch |
| 18 | 140837 | Decal, Saddle Brake Parking |
| -- | 193226X428 | Pad, Footrest LH |
| -- | 400981X428 | Pad, Footrest RH |
| -- | 166960 | Decal, Bypass |
| -- | 162598 | Decal, Drawbar Load Limit |
| -- | 442713 | Manual, Operator's (Euro) |
| -- | 442734 | Manual, Operator's (Scan) |
| -- | 442735 | Manual, Operator's (E-Bloc) |
| -- | 442736 | Manual, Operator's (Baltic) |
| -- | 442714 | Manual, Parts |

WHEELS & TIRES



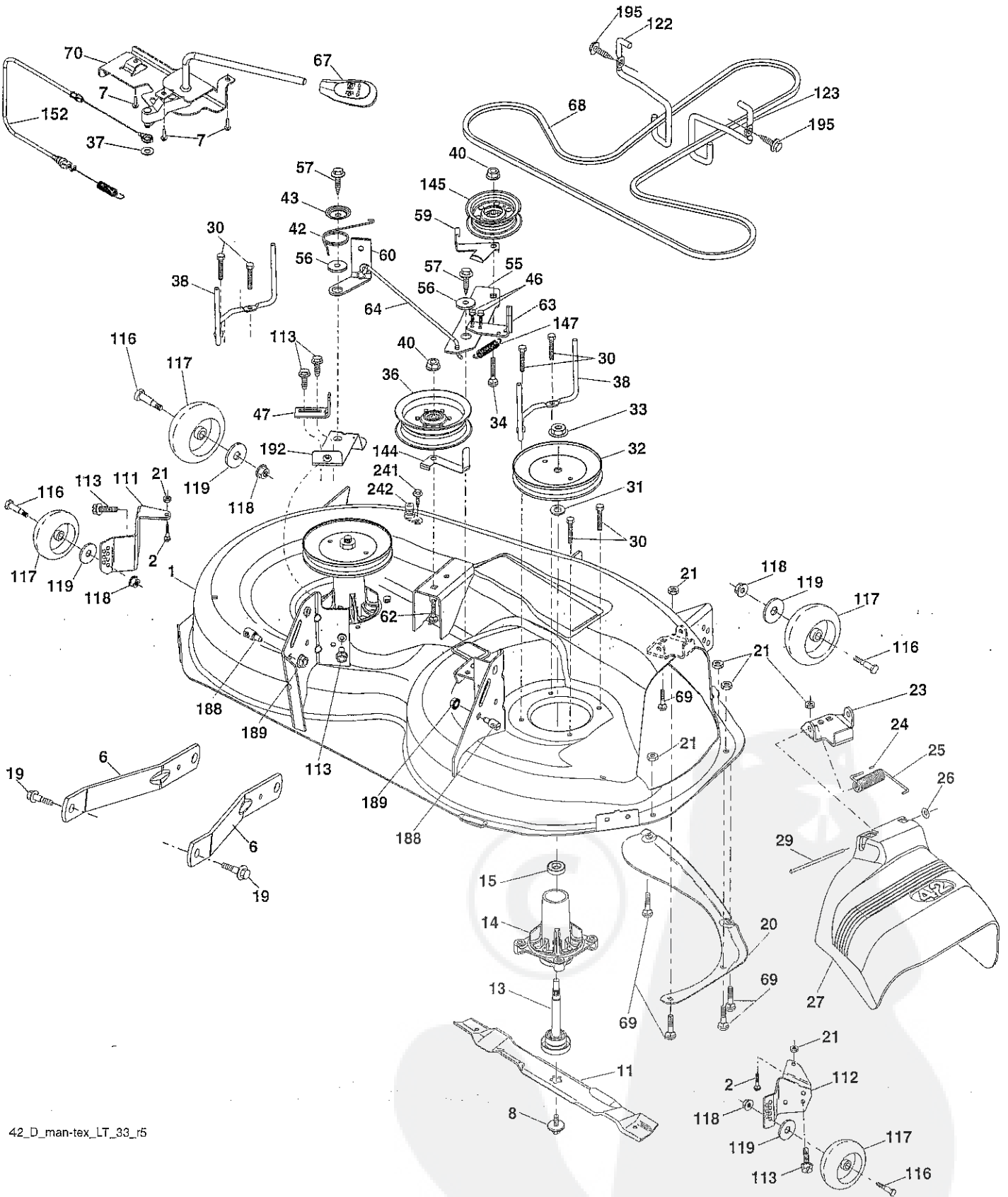
KEY PART NO. NO.

| KEY PART NO. | NO. | DESCRIPTION |
|--------------|------------|-------------------------------|
| 1 | 59192 | Cap, Valve, Tire |
| 2 | 65139 | Stem, Valve |
| 3 | 106732X613 | Rim Assembly, Front |
| 4 | 59904 | Tube, Front |
| 5 | 106222X | Tire, Front |
| 6 | 278H | Fitting, Grease |
| 7 | 9040H | Bearing, Flange |
| 8 | 104757X428 | Cap, Axle (Front Wheel Only) |
| 9 | 138468 | Tire, 18 x 9.5-8 TurfSaver LT |
| 10 | 7152J | Tube, Rear |
| 11 | 106108X613 | Rim Assembly, Rear |
| -- | 144334 | Sealant, Tire (10 oz. Tube) |

NOTE: All component dimensions given in U.S. inches
1 inch = 25.4 mm

TRACTOR - - MODEL NO. 917.288160

MOWER



42_D_man-tex_LT_33_r5

TRACTOR -- MODEL NO. 917.288160

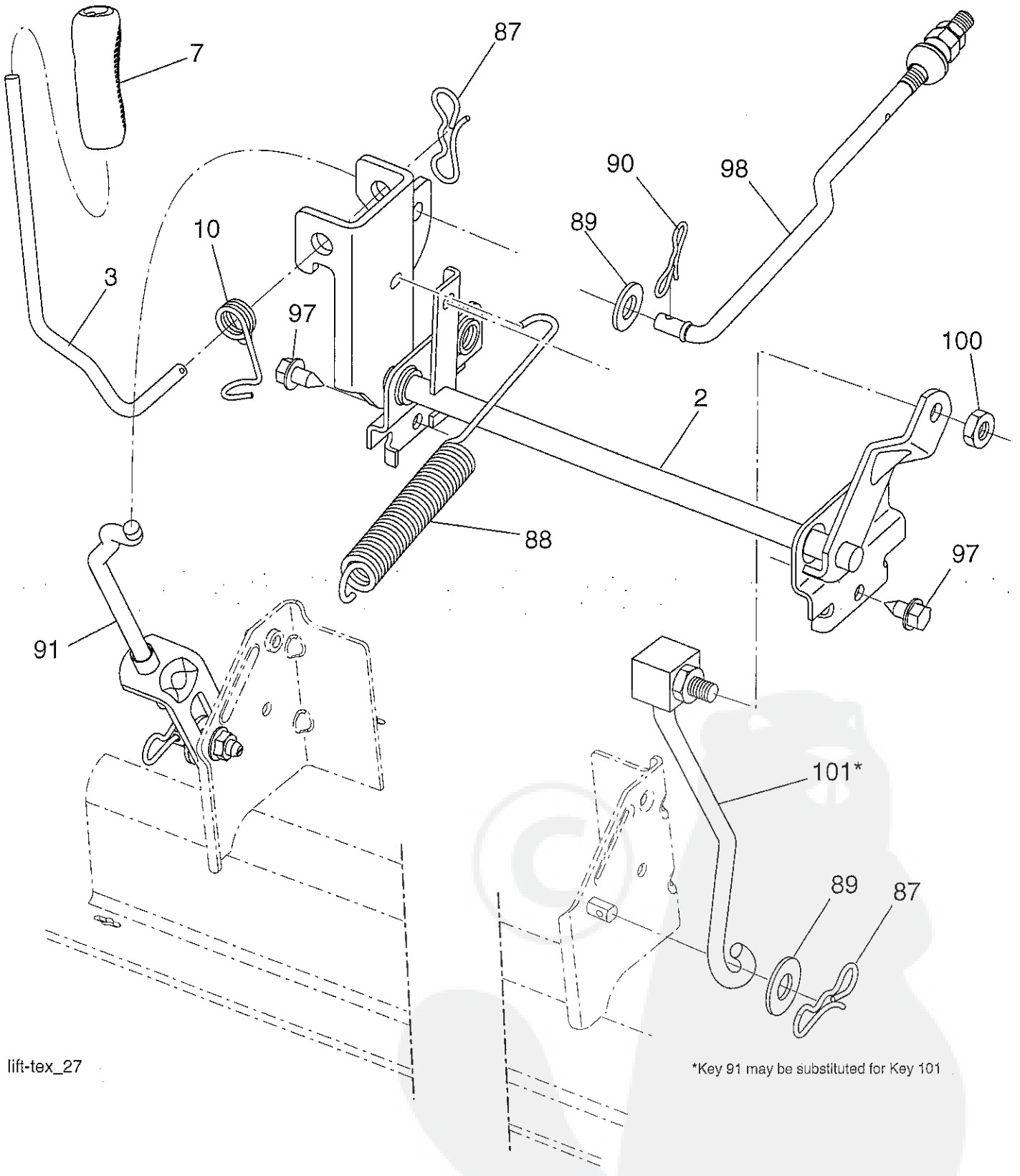
MOWER

| KEY NO. | PART NO. | DESCRIPTION | KEY NO. | PART NO. | DESCRIPTION |
|---------|------------|------------------------------------|---------|------------|---|
| 1 | 196495X615 | Deck Weldment Mower | 62 | 721106016 | Bolt Rd Hd Sq Nk 3/8-16 unc x 2 |
| 2 | 72140506 | Bolt 5/16-18 x 3/4 | 63 | 199477 | Arm Brake Mower |
| 6 | 195186 | Arm Suspension | 64 | 199790 | Link Brake Asm |
| 7 | 416358 | Screw #10 x .750 BOS Thread | 67 | 198398X667 | Handle Clutch Cable |
| 8 | 193003 | Bolt/Washer asm 7/16-20 unf | 68 | 429636 | Drive, Belt |
| 11 | 424752 | Blade, 42" 3NI | 69 | 72140505 | Bolt |
| 13 | 192872 | Shaft Assembly, Mandrel | 70 | 199972 | Clutch Asm Manual |
| 14 | 187281 | Housing, Mandrel | 111 | 404784 | Bracket Wheel Gauge LH |
| 15 | 110485X | Bearing, Ball, Mandrel | 112 | 404785 | Bracket Wheel Gauge RH |
| 19 | 196539 | Bolt, Shoulder | 113 | 17000510 | Bolt 5/16-18 |
| 20 | 159770 | Baffle Vortex | 116 | 4898H | Bolt, Shoulder |
| 21 | 73680500 | Nut, Crownlock 5/16-18 unc | 117 | 188606 | Wheel, Gauge |
| 23 | 192557 | Bracket, Deflector | 118 | 73900600 | Nut, Lock 3/8-16 |
| 24 | 105304X | Cap, Sleeve | 119 | 19121414 | Washer 3/8 x 7/8 x 14 Ga. |
| 25 | 197026 | Spring, Torsion, Deflector | 122 | 197258 | Keeper Belt Engine LH |
| 26 | 110452X | Nut, Push | 123 | 197259 | Keeper Belt Engine RH |
| 27 | 424469 | Shield, Deflector | 144 | 199204 | Keeper Belt |
| 29 | 131491 | Rod, Hinge | 145 | 193197 | Pulley Idler, Flat |
| 30 | 173984 | Screw Thdrol Rolling Wsh Hd | 147 | 401971 | Spring Return |
| 31 | 187690 | Washer, Spacer | 152 | 435111 | Manual Clutch Cable |
| 32 | 197473 | Pulley, Mandrel | 188 | 195161 | Stud Fastener |
| 33 | 400234 | Nut, Toplock, Flanged | 189 | 73900500 | Nut Lock Hex Flange |
| 34 | 72110612 | Bolt Carr Sh. 3/8-16 x 1-1/2 Gr. 5 | 192 | 197260 | Bracket Brake Stand LH |
| 36 | 197379 | Pulley, Idler | 195 | 17000612 | Screw Hex Wsh Thdr 3/8-16 x 3/4 |
| 37 | 19131316 | Washer | 241 | 152927 | Screw TT #10-32.5. 3/8 Flange |
| 38 | 432520 | Keeper Belt LH Mandrel | 242 | 415598 | Port Washout |
| 40 | 73900600 | Nut, Lock Fig. 3/8-16 unc | -- | 192870 | Mandrel Assembly (Includes housing, shaft assembly, and bearing only - pulley/nut/washer and blade bolt/washers not included) |
| 42 | 198410 | Spring Torsion Brake | -- | 437732 | Replacement Mower, Complete |
| 43 | 197256 | Spring Torsion Retainer | | | |
| 46 | 137729 | Screw Thd Roll 1/4-20 x 5/8 | | | |
| 47 | 197250 | Bracket Clutch Cable | | | |
| 55 | 437110 | Arm, Idler | | | |
| 56 | 199092 | Spacer, Retainer | | | |
| 57 | 17000616 | Screw 3/8-16 x 1 | | | |
| 59 | 141043 | Guard, Tuv Idler | | | |
| 60 | 197261 | Arm Brake Mower | | | |

NOTE: All component dimensions given in U.S. inches
1 inch = 25.4 mm

TRACTOR -- MODEL NO. 917.288160

MOWER LIFT



lift-tex_27

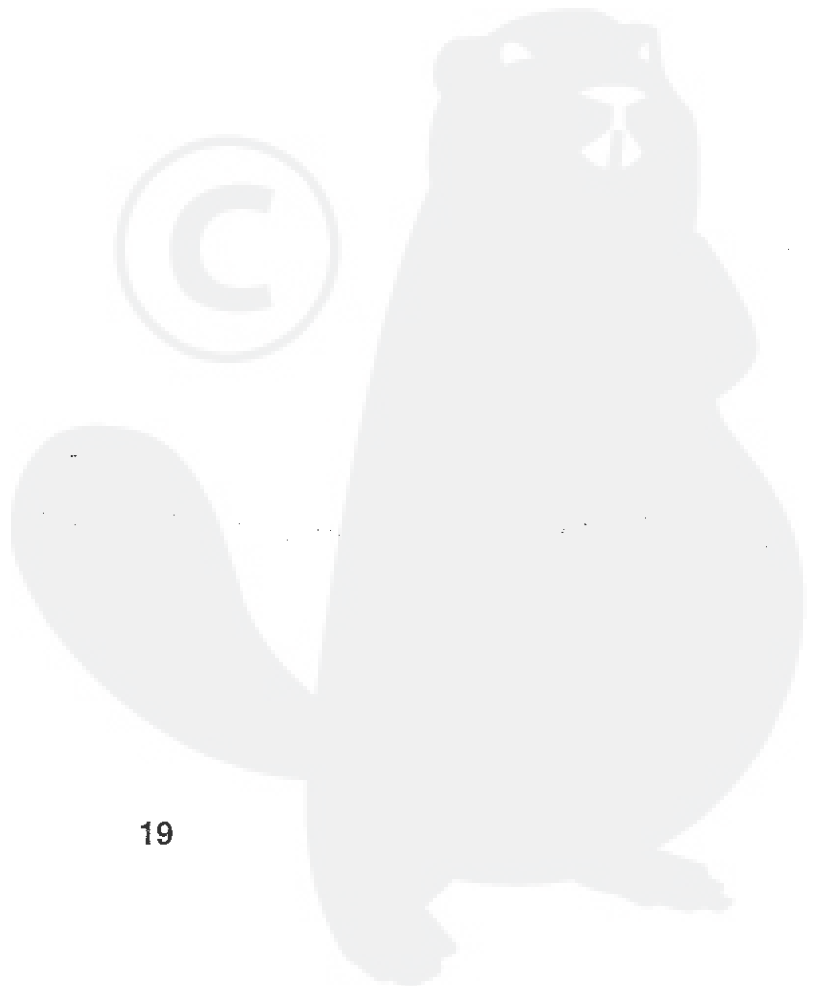
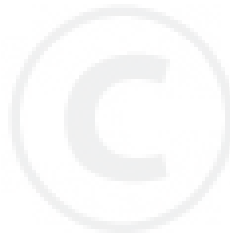
*Key 91 may be substituted for Key 101

TRACTOR - - MODEL NO. 917.288160

MOWER LIFT

| KEY PART NO. | NO. | DESCRIPTION |
|--------------|------------|------------------------------|
| 2 | 422027 | Shaft Asm., Lift |
| 3 | 195231 | Lever Asm., Lift RH |
| 7 | 196492X428 | Grip, Lever |
| 10 | 196314 | Spring Torsion |
| 87 | 194209 | Pin Cotter 7/16 Bow Tie Lock |
| 88 | 410710 | Spring Lift Assist |
| 89 | 19191912 | Washer Clear Zinc |
| 90 | 194208 | Pin Cotter 5/16 Bow Tie Lock |
| 91 | 195181 | Link Lift Susp Mower Rear |
| 97 | 17000612 | Screw 3/8-16 x .75 |
| 98 | 195270 | Link Lift Susp. Front Mower |
| 100 | 73930600 | Nut Centerlock 3/8-16 unc |
| 101 | 407003 | Link ASm Lift Fxd |

NOTE: All component dimensions given in U.S. inches
1 inch = 25.4 mm



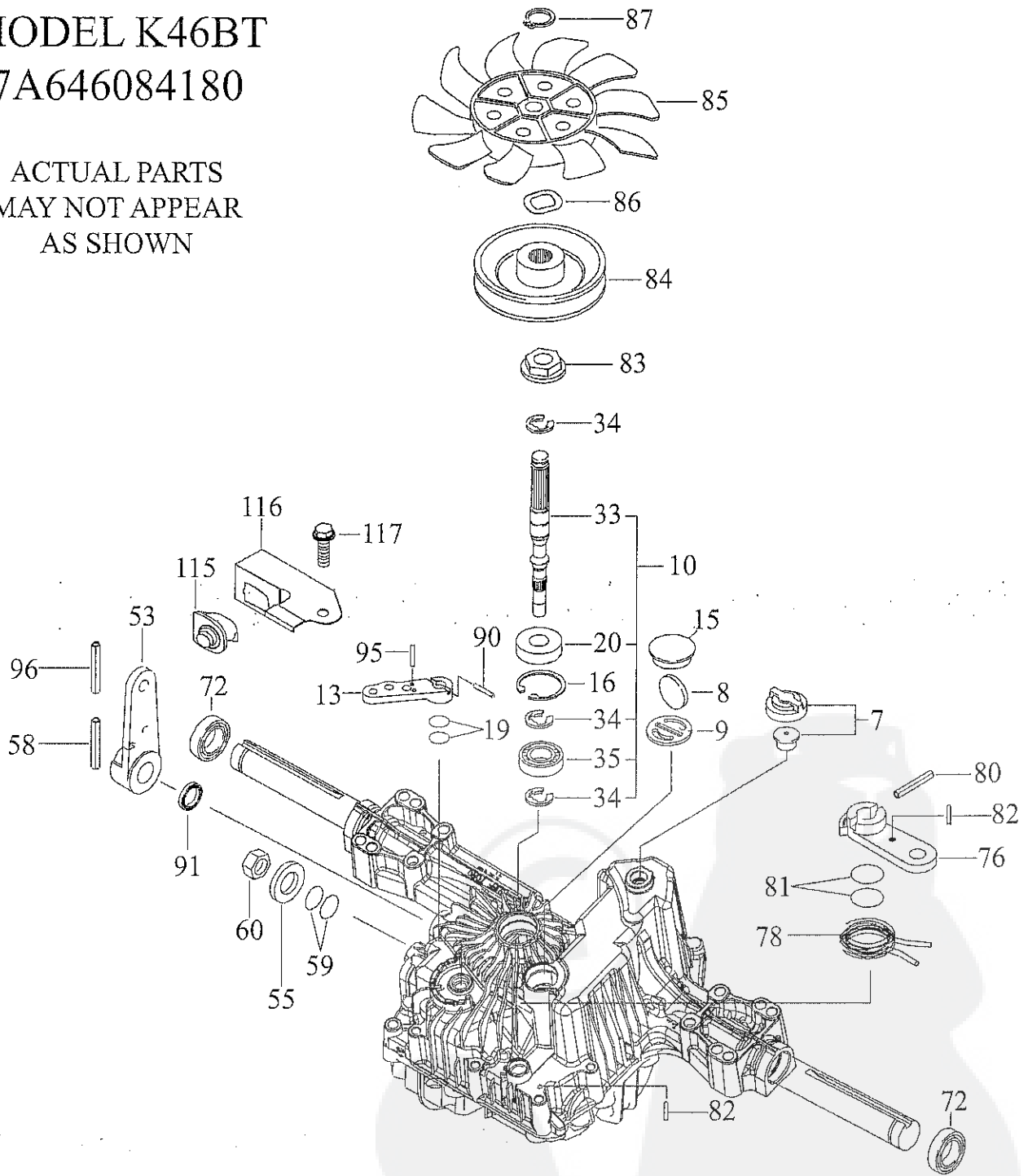
TRACTOR - - MODEL NUMBER 917.288160

TUFF TORQ TRANSAXLE - MODEL NUMBER K46BT

MODEL K46BT

7A646084180

ACTUAL PARTS
MAY NOT APPEAR
AS SHOWN



TRACTOR -- MODEL NUMBER 917.288160

TUFF TORQ TRANSAXLE - MODEL NUMBER K46BT

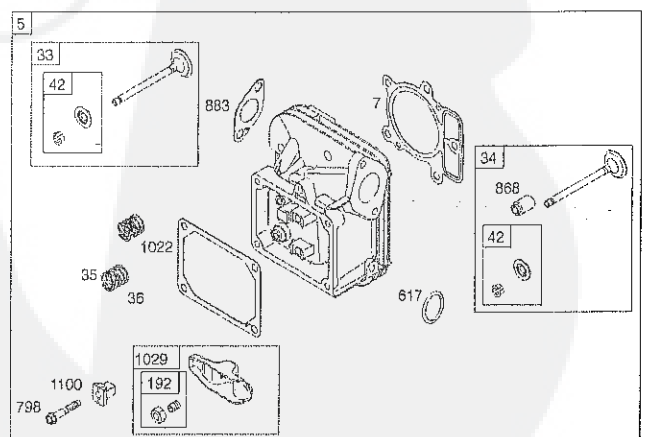
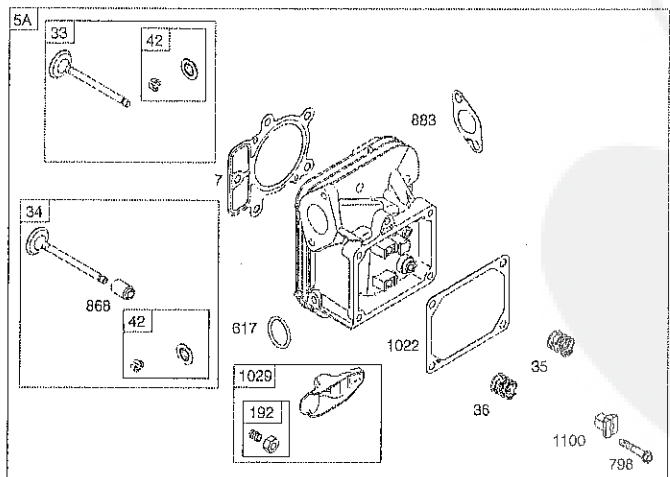
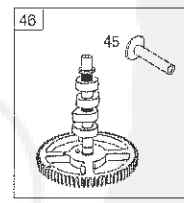
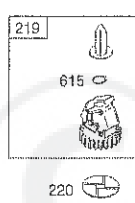
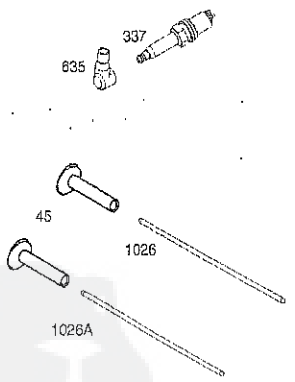
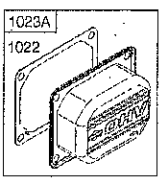
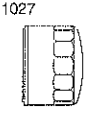
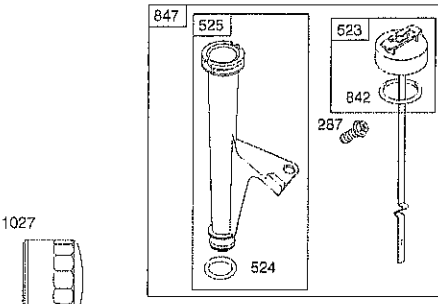
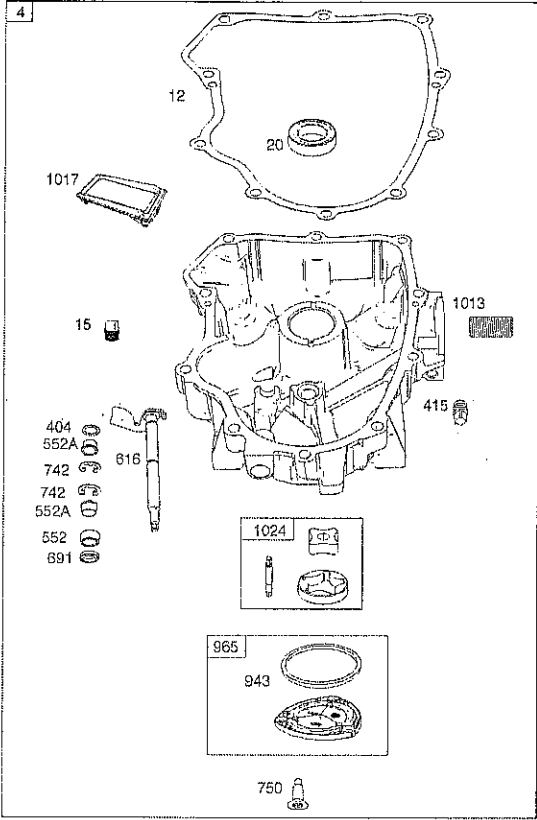
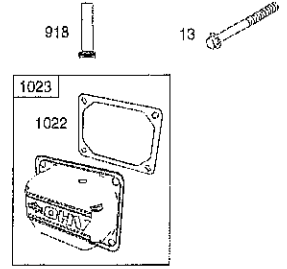
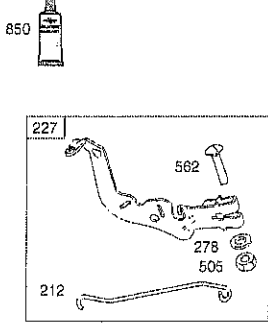
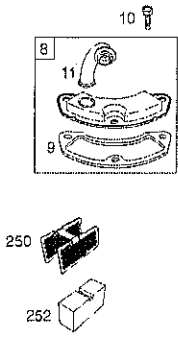
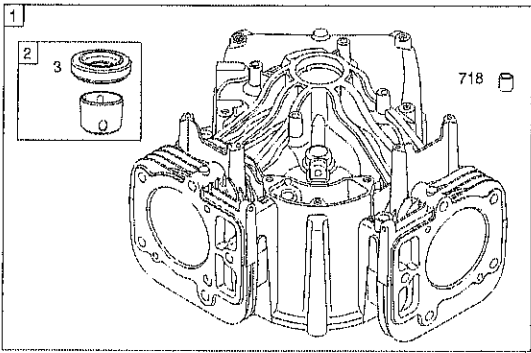
| KEY PART NO. | PART NO. | DESCRIPTION |
|--------------|----------|------------------------|
| 7 | 414395 | Vent Valve 15 |
| 8 | 414396 | Magnet |
| 9 | 414397 | Magnet Holder |
| 10 | 415923 | Pump Shaft/bearing Kit |
| 13 | 414398 | Bypass Lever |
| 15 | 414399 | Sealing Cap 30 |
| 16 | 414400 | Snap Ring C 35 |
| 19 | 414401 | O-ring 1a P10a |
| 20 | 414402 | Seal Tc 153507 |
| 33 | 414403 | Pump Shaft (Standard) |
| 34 | 414404 | E-ring 15 |
| 35 | 414405 | Bearing 6202c3 |
| 53 | 414431 | Control Lever F |
| 55 | 415924 | Washer 12 |
| 58 | 415925 | Roll Pin 6 * 40 |
| 59 | 415926 | O-ring 1a P14 |
| 60 | 415927 | Nut 12 |
| 72 | 414407 | Seal 19 * 32 * 8 |
| 76 | 414408 | Brake Lever |
| 78 | 414409 | Brake Return Spring |
| 80 | 414410 | Spring Pin 5 * 32 |
| 81 | 414411 | O-ring 1a P12 |
| 82 | 414412 | Spring Pin 4 * 16 |
| 83 | 414413 | Spine Collar |
| 84 | 414414 | Pulley L |
| 85 | 414415 | Fan, Black |
| 86 | 414416 | Wave Washer |
| 87 | 414417 | Snap Ring |
| 90 | 414418 | Spring Pin 3.0a * 20 |
| 91 | 414419 | Oil Seal 16 * 22 *.03 |
| 95 | 414850 | Spring Pin 3.0a*16 |
| 96 | 414420 | Roll Pin 3.5 * 40 |
| 115 | 415928 | Switch 6440-11 Delta |
| 116 | 415929 | Switch Bracket |
| 117 | 415930 | Tapping Screw 8 * 20 |

NOTE: All component dimensions given in U.S. inches
1 inch = 25.4 mm

TRACTOR - - MODEL NO. 917.288160

BRIGGS & STRATTON ENGINE - - MODEL NUMBER 445677, TYPE NUMBER 2344-B1

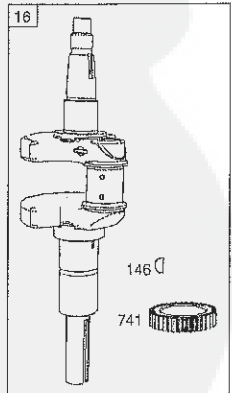
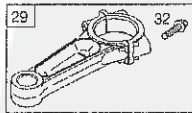
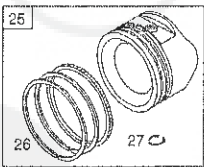
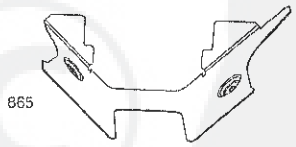
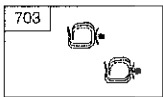
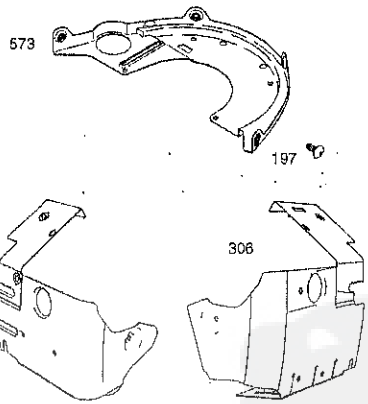
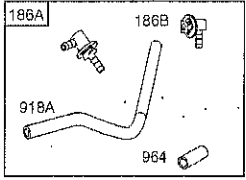
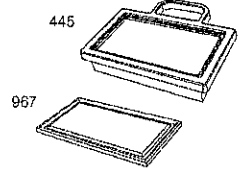
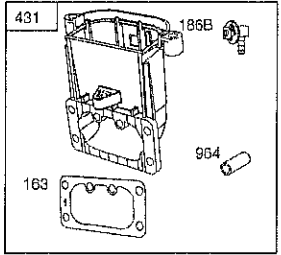
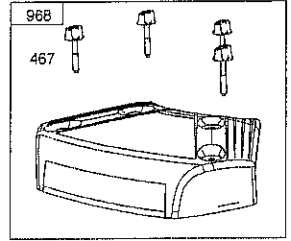
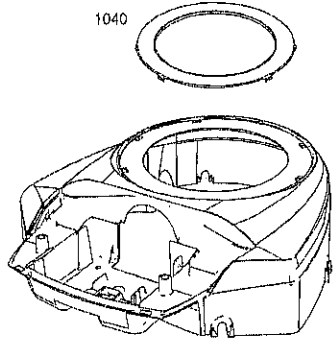
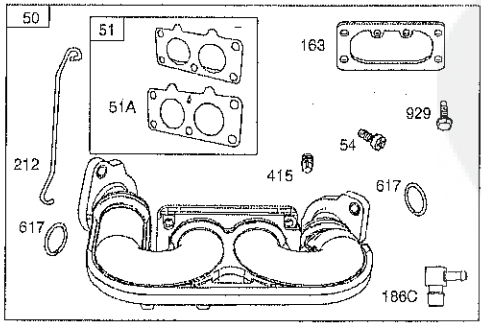
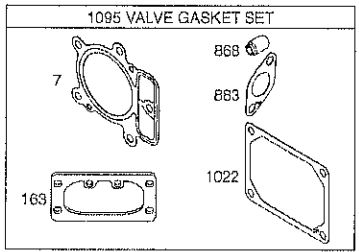
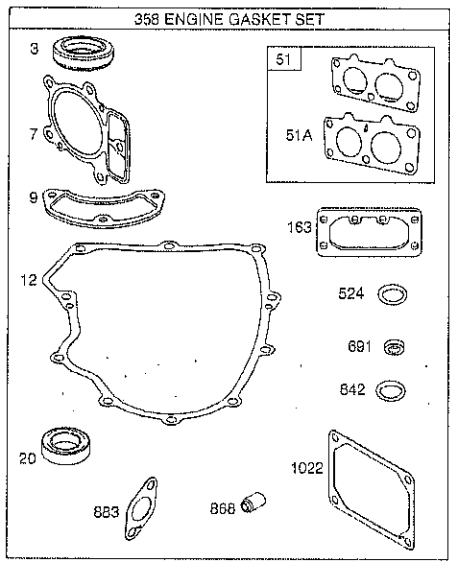
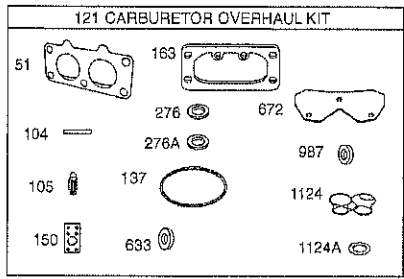
48 SHORT BLOCK
1058 OPERATOR'S MANUAL
1329 REPLACEMENT ENGINE
1330 REPAIR MANUAL



TRACTOR - - MODEL NO. 917.288160

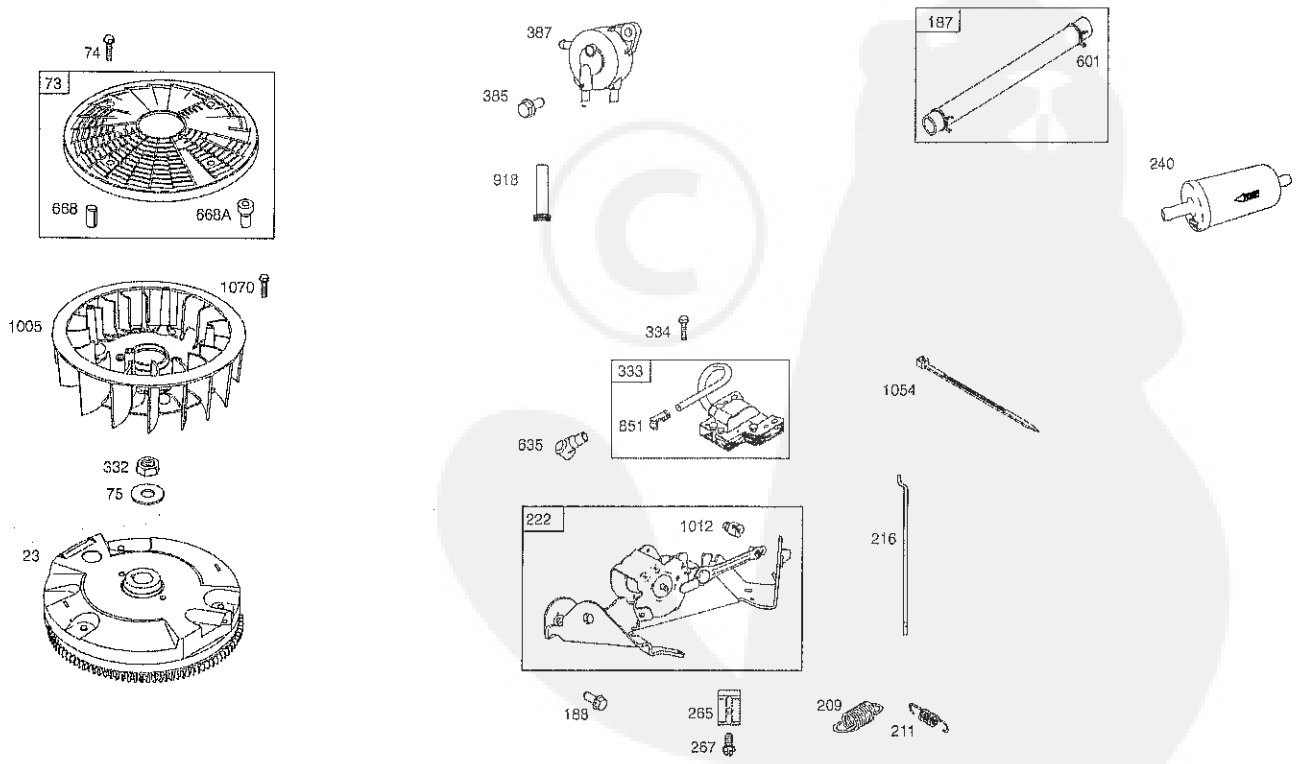
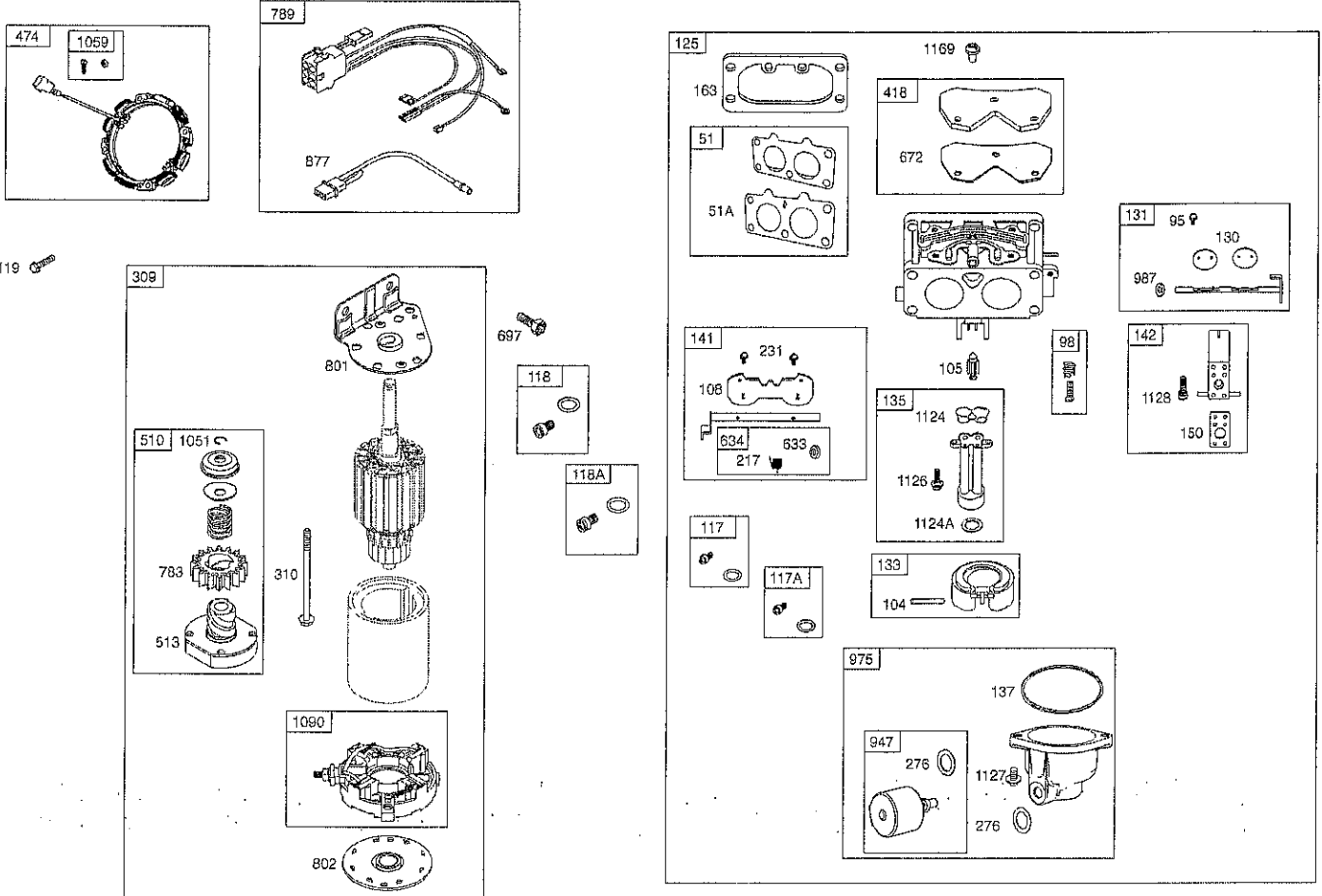
BRIGGS & STRATTON ENGINE - - MODEL NUMBER 445677, TYPE NUMBER 2344-B1

1036 EMISSIONS LABEL



24

TRACTOR - - MODEL NO. 917.288160
BRIGGS & STRATTON ENGINE - - MODEL NUMBER 445677, TYPE NUMBER 2344-B1



TRACTOR - - MODEL NO. 917.288160

BRIGGS & STRATTON ENGINE - - MODEL NUMBER 445677, TYPE NUMBER 2344-B1

| KEY NO. | PART NO. | DESCRIPTION | KEY NO. | PART NO. | DESCRIPTION |
|---------|----------|--------------------------------------|---------|----------|---|
| 1 | 793564 | Cylinder Assembly | 130 | 690993 | Valve-Throttle |
| 2 | 797673 | Bushing/Seal Kit (Magneto Side) | 131 | 499805 | Kit-Throttle Shaft |
| 3 | 391086s | Seal-Oil (Magneto Side) | 133 | 699724 | Float-Carburetor |
| 4 | 796307 | Sump-Engine | 135 | 699729 | Tube-Fuel Transfer |
| 5 | 796231 | Head-Cylinder (Cylinder 1) | 137 | 690994 | Gasket-Float Bowl |
| 5A | 796232 | Head-Cylinder (Cylinder 2) | 141 | 796228 | Kit-Choke Shaft |
| 7 | 693997 | Gasket-Cylinder Head | 142 | 699726 | Nozzle-Carburetor |
| 8 | 792185 | Breather Assembly | 146 | 690979 | Key-Timing |
| 9 | 690937 | Gasket-Breather | 150 | 690995 | Gasket-Nozzle |
| 10 | 697551 | Screw (Breather Assembly) | 163 | 691001 | Gasket-Air Cleaner |
| 11 | 792184 | Tube-Breather | 186A | 799158 | Hose-Connector (EVAP System) |
| 12 | 697227 | Gasket-Crankcase | 186B | 845141 | Hose-Connector (EVAP System) |
| 13 | 793988 | Screw (Cylinder Head) | 186C | 795985 | Hose-Connector (Intake Manifold) |
| 15 | 690946 | Plug-Oil Drain | 187 | 791766 | Line-Fuel (Cut to Required Length) |
| 16 | 796237 | Crankshaft | | | |
| 20 | 795387 | Seal-Oil (PTO Side) | 188 | 697551 | Screw (Control Bracket) |
| 22 | 694966 | Screw (Crankcase Cover Sump) | 192 | 690083 | Adjuster-Rocker Arm |
| 23 | 691054 | Flywheel | 197 | 697820 | Screw (Back Plate) |
| 24 | 222698s | Key-Flywheel | 209 | 799169 | Spring-Governor (Dark Blue) |
| 25 | 792023 | Piston Assembly (Standard) | 211 | 691019 | Spring-Governed Idle (No Color) |
| | 792072 | Piston Assembly (.020" Oversize) | 212 | 695238 | Link-Throttle |
| 26 | 792026 | Ring Set (Standard) | 216 | 796229 | Link-Choke |
| | 792073 | Ring Set (.020" Oversize) | 217 | 695409 | Spring-Choke Return |
| 27 | 690975 | Lock-Piston Pin | 219 | 793338 | Gear-Governor |
| 28 | 696581 | Pin-Piston | 220 | 690412 | Washer (Governor Gear) |
| 29 | 796209 | Rod-Connecting | 221 | 841026 | Cup-Governor |
| 32 | 690976 | Screw (Connecting Rod) | 222 | 798915 | Bracket-Control |
| 33 | 697576 | Valve-Exhaust | 227 | 798856 | Lever-Governor Control |
| 34 | 792200 | Valve-Intake | 231 | 690718 | Screw (Choke Valve) |
| 35 | 694865 | Spring-Valve (Intake) | 240 | 691035 | Filter-Fuel |
| 36 | 694865 | Spring-Valve (Exhaust) | 250 | 690957 | Retainer-Breather |
| 42 | 499586 | Keeper-Valve | 252 | 794389 | Collector-Oil |
| 45 | 690977 | Tappet-Valve | 265 | 691024 | Clamp-Casing |
| 46 | 792555 | Camshaft | 267 | 792629 | Screw (Casing Clamp) |
| 48 | 698172 | Short Block | 276 | 695410 | Washer-Sealing |
| 50 | 695241 | Manifold-Intake | 278 | 792651 | Washer (Governor Control Lever) |
| 51 | 795123 | Gasket-Intake | 287 | 697551 | Screw (Dipstick Tube) |
| 51A | 690950 | Gasket-Intake | 304 | 797406 | Housing-Blower |
| 53 | 690951 | Stud (Carburetor) | 305 | 691005 | Screw (Blower Housing) (1/4-20x.68) |
| 54 | 699816 | Screw (Intake Manifold) | | | |
| 73 | 494439 | Screen-Rotating | 305B | 790690 | Screw (Blower Housing to Intake Elbow) (#10-16x.62) |
| 74 | 698425 | Screw (Rotating Screen) | | | |
| 75 | 691056 | Washer (Flywheel) | 306 | 798855 | Shield-Cylinder (Cylinder 2) |
| 95 | 690718 | Screw (Throttle Valve) | 306A | 796852 | Shield-Cylinder(Cylinder 1) |
| 98 | 699721 | Kit-Idle Speed | 307 | 691003 | Screw(CylinderShield) (10-24x.43) |
| 104 | 694918 | Pin-Float Hinge | | | |
| 105 | 797410 | Valve-Float Needle | 307A | 697551 | Screw (Cylinder Shield) (1/4-20 x .66) |
| 108 | 699723 | Valve-Choke | | | |
| 117 | 791501 | Jet-Main (Standard) (Left Jet) | 309 | 497595 | Motor-Starter |
| 117A | 791502 | Jet-Main (Standard) (Right Jet) | 310 | 690323 | Screw (Starter Motor) |
| 118 | 695415 | Jet-Main (High Altitude) (Left Jet) | 332 | 691059 | Nut (Flywheel) |
| 118A | 843099 | Jet-Main (High Altitude) (Right Jet) | 333 | 691060 | Armature-Magneto |
| | | | 334 | 691061 | Screw (Magneto Armature) |
| 121 | 797890 | Kit-Carburetor Overhaul | 337 | 691043 | Plug-Spark |
| 125 | 796258 | Carburetor | 358 | 694012 | Gasket Set-Engine |

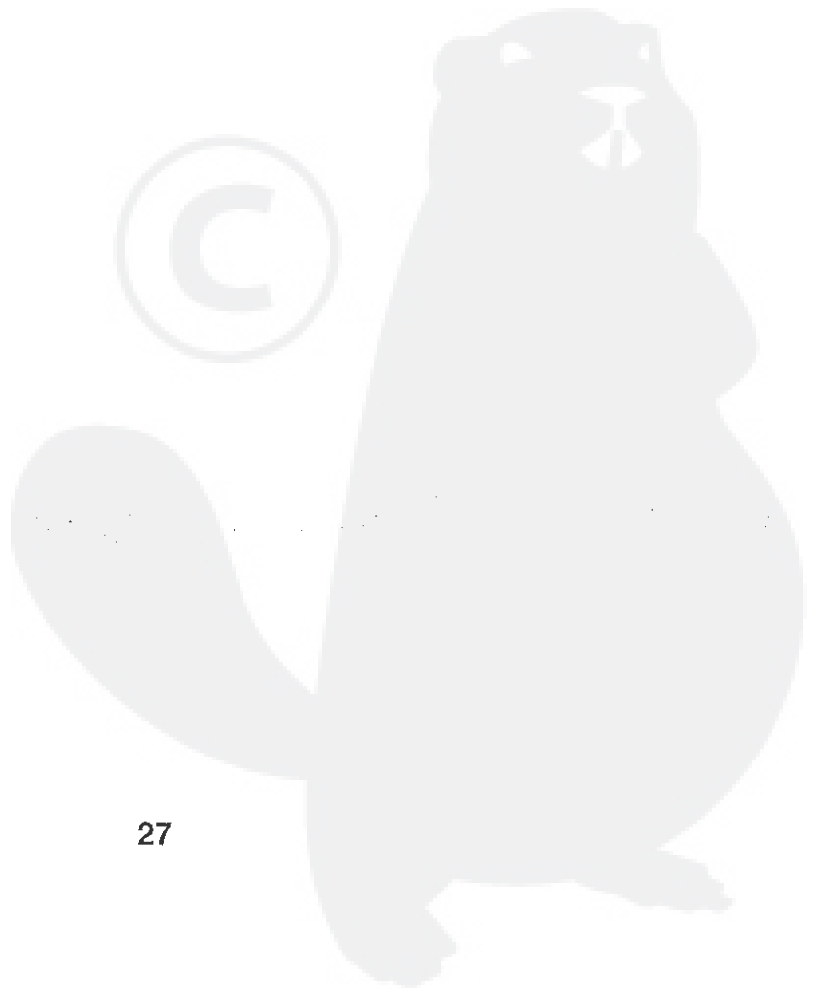
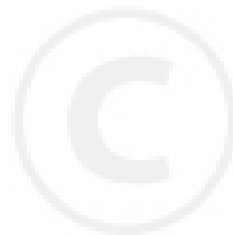
TRACTOR - - MODEL NO. 917.288160

BRIGGS & STRATTON ENGINE - - MODEL NUMBER 445677, TYPE NUMBER 2344-B1

| KEY NO. | PART NO. | DESCRIPTION | KEY NO. | PART NO. | DESCRIPTION |
|---------|----------|---|---------|-----------|--|
| 385 | 797409 | Screw (Fuel Pump) | 918 | 797408 | Hose-Vacuum |
| 387 | 808656 | Pump-Fuel | 918A | 799160 | Hose-Vacuum (EVAP System) |
| 404 | 690442 | Washer (Governor Crank) | 943 | 796222 | Seal-O Ring (Oil Pump Cover) |
| 415 | 794903 | Plug | 947 | 798779 | Solenoid-Fuel |
| 418 | 795912 | Plate-Carburetor | 964 | 799159 | Cap-Connector |
| 431 | 798859 | Elbow-Intake | 965 | 796221 | Cover-Oil Pump |
| 445 | 499486 | Filter-Air Cleaner Cartridge | 967 | 273638s | Filter-Pre Cleaner |
| 467 | 691008 | Knob-Air Cleaner | 968 | 791242 | Cover-Air Cleaner |
| 474 | 696459 | Alternator | 975 | 798778 | Bowl-Fuel |
| 505 | 691029 | Nut (Governor Control Lever) | 987 | 691000 | Seal-Throttle Shaft |
| 510 | 696541 | Drive-Starter | 1005 | 791236 | Fan-Flywheel |
| 513 | 692024 | Clutch-Drive | 1012 | 797926 | Retainer-Link |
| 523 | 691036 | Dipstick | 1013 | 690954 | Nipple-Oil Filter |
| 524 | 691032 | Seal-Dipstick Tube | 1017 | 796214 | Screen-Oil Pump |
| 525 | 691037 | Tube-Dipstick | 1022 | 690971 | Gasket-Rocker Cover |
| 552 | 796638 | Bushing-Governor Crank | 1023 | 793146 | Cover-Rocker (Cylinder 1) |
| 552A | 690553 | Bushing-Governor Crank | 1023A | 499600 | Cover-Rocker (Cylinder 2) |
| 562 | 690311 | Screw (Governor Control Lever) | 1024 | 796220 | Pump-Oil |
| 573 | 790444 | Plate-Back | 1026 | 690981 | Rod-Push (Steel) (Exhaust) |
| 601 | 691038 | Hose-Clamp (Black) | 1026A | 690982 | Rod-Push (Aluminum) (Intake) |
| 615 | 698290 | Retainer-Governor Shaft | 1027 | 492932s | Filter-Oil |
| 616 | 691045 | Crank-Governor | 1029 | 690972 | Arm-Rocker |
| 617 | 697891 | Seal-O Ring (Intake Manifold) (Red) | 1036 | | Label-Emissions (Available from a Briggs & Stratton Authorized Dealer) |
| 633 | 699813 | Seal-Choke/Throttle Shaft (Choke Shaft) | 1040 | 791237 | Plate-Trim |
| 634 | 698779 | Spring/Seal Assembly | 1051 | 691265 | Ring-Retaining |
| 635 | 66538s | Boot-Spark Plug | 1054 | 280275 | Tie-Cable |
| 654 | 690958 | Nut (Carburetor) | 1058 | 278776TRI | Operator's Manual |
| 668 | 691215 | Spacer (Rotating Screen) | 1059 | 698516 | Kit-Screw/Washer |
| 668A | 691500 | Spacer (Rotating Screen) | 1070 | 791680 | Screw (Flywheel Fan) |
| 672 | 690234 | Gasket-Carburetor Plate | 1090 | 691293 | Retainer-Brush |
| 691 | 790574 | Seal-Governor Shaft | 1095 | 694013 | Gasket Set-Valve |
| 697 | 690372 | Screw (Drive Cap) | 1100 | 791959 | Pivot-Rocker Arm |
| 703 | 691010 | Clip | 1119 | 691183 | Screw (Alternator) |
| 718 | 690959 | Pin-Locating | 1124 | 690988 | Seal-O Ring (Fuel Transfer Tube) |
| 741 | 690980 | Gear-Timing | 1124A | 841653 | Seal-O Ring (Fuel Transfer Tube) |
| 742 | 690328 | Retainer-E Ring | 1126 | 690991 | Screw (Fuel Transfer Tube) |
| 750 | 796208 | Screw (Oil Pump Cover) | 1127 | 695407 | Screw (Float Bowl) |
| 783 | 695708 | Gear-Pinion | 1128 | 690990 | Screw (Carburetor Nozzle) |
| 789 | 698330 | Harness-Wiring | 1169 | 690990 | Screw (Carburetor Cover Plate) |
| 798 | 697890 | Screw (Rocker Arm) | 1329 | 44Q777 | Replacement Engine |
| 801 | 691283 | Cap-Drive | | -3137-G5 | |
| 802 | 691286 | Cap-End | 1330 | 273521 | Repair Manual |
| 842 | 691031 | Seal-O Ring (Dipstick) | | | |
| 847 | 499602 | Dipstick/Tube Assembly | | | |
| 850 | 100106 | Sealant-Liquid | | | |
| 851 | 493880s | Terminal-Spark Plug | | | Engine Gasket Set Key No. 358 |
| 865A | 691015 | Cover-Air Guide (Valley) | | | Valve Gasket Set Key No. 1095 |
| 868 | 690968 | Seal-Valve | | | Carburetor Overhaul Kit Key No. 121 |
| 877 | 790544 | Wire/Connector-Alternator | | | |
| 883 | 690970 | Gasket-Exhaust | | | |
| 914 | 691127 | Screw (Rocker Cover) | | | |

NOTE: All component dimensions given in U.S. inches
1 inch = 25.4 mm

SERVICE NOTES



LIMITED WARRANTY ON CRAFTSMAN RIDING EQUIPMENT

For two (2) years from the date of purchase, if this Craftsman Riding Equipment is maintained, lubricated and tuned up according to the instructions in the owner's manual, Sears will repair or replace free of charge any parts that are found to be defective in material or workmanship according to the guidelines of coverage listed below. Sears will also provide free labor for these applicable warranted parts for the two full years. During the first 30 days of purchase, there will be no charges to service the product at your home for issues covered by this warranty. (See exclusions below). For your convenience, IN HOME warranty service will still be available after the first 30 days of purchase, but a trip charge will apply. This charge will be waived if the Craftsman product is dropped off at an authorized Sears location. For the nearest authorized Sears location, please call 1-800-4-MY-HOME®. This warranty applies only while this product is within the United States.

This Warranty does not cover:

- Expendable items which become worn during normal use, including but not limited to blades, spark plugs, air cleaners, belts, and oil filters.
- Standard Maintenance Servicing, oil changes, or tune-ups
- Tire replacement or repair caused by punctures from outside objects, such as nails, thorns, stumps, or glass.
- Repairs necessary because of operator abuse, including but not limited to, damage caused by towing objects beyond the capability of the riding equipment, impacting objects that bend the frame or crankshaft, or over-speeding the engine.
- Repairs necessary because of operator negligence, including but not limited to, electrical and mechanical damage caused by improper storage, failure to use the proper grade and amount of engine oil, failure to keep the deck clear of flammable debris, or failure to maintain the equipment according to the instructions contained in the owner's manual.
- Engine (fuel system) cleaning or repairs caused by fuel determined to be contaminated or oxidized (stale). In general, fuel should be used within 30 days of its purchase date.
- Normal deterioration and wear of the exterior finishes, or product label replacement.
- Riding equipment used for commercial or rental purposes.

LIMITED WARRANTY ON BATTERY

For ninety (90) days from date of purchase, if any battery included with this riding equipment proves defective in material or workmanship and our testing determines the battery will not hold a charge, Sears will replace the battery at no charge. During the first 30 days of purchase, there will be no charges to replace the battery at your HOME. After the first 30 days, for your convenience, IN-HOME warranty service will still be available but a trip charge will apply. This charge will be waived if the Craftsman product is dropped off at an authorized Sears location. For the nearest authorized Sears location, please call 1-800-4-MY-HOME®.

This battery warranty applies only while this product is within the United States.

This warranty gives you specific legal rights, and you may also have other rights, which vary, from state to state.

Sears, Roebuck and Co., Dept. 817WA, Hoffman Estates, IL 60179



CRAFTSMAN®