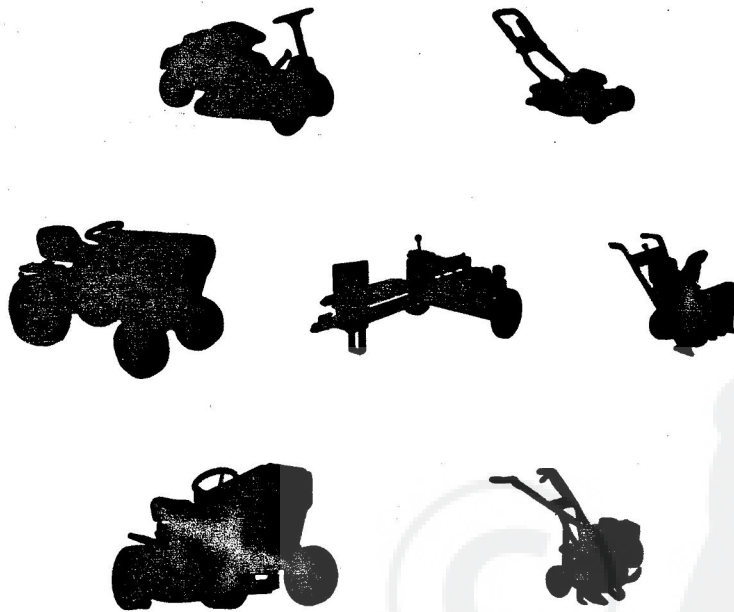


OWNER'S MANUAL

10 H.P. VARIDRIVE 36 INCH
RIDING LAWN MOWER
MODEL NUMBER LO262AR



LAWN AND GARDEN
OUTDOOR POWER EQUIPMENT

ROPER

OUTDOOR POWER PRODUCTS

DIVISION OF ROPER CORPORATION

1905 WEST COURT STREET
KANKAKEE, ILLINOIS 60901

on your purchase of a Riding Lawn Mower. It has been designed, engineered and manufactured to give you dependability and performance. Should you experience any problem you cannot easily remedy, please contact your nearest authorized service dealer. He has well-trained technicians and the proper tools and parts to service or repair this unit.

Please read and retain this manual. Following the "Rules For Safe Operation", "Assembly", "Operation", and "Maintenance" instructions will help you achieve a long, safe, service life for your Riding Lawn Mower.

LIMITED WARRANTY ROPER OUTDOOR POWER PRODUCTS

Roper Corporation warrants to the original consumer purchaser that this product is free from defects in materials and workmanship. For a period of one (1) year from date of purchase, we will repair or replace, at our option, without charge, any part except for the engine which we find to be defective due to materials or workmanship. This warranty is subject to the following limitations:

1. **Engine Warranty:** All engine powered Roper products have a separate Engine Warranty extended by the individual Engine Manufacturer. The Engine Warranty must be referred to in the event of an engine problem (pages 43 & 44).
2. **Transmission Warranty:** All transmission powered Roper products have a separate Transmission Warranty extended by the individual Transmission Manufacturer. The Transmission Warranty must be referred to in the event of any transmission problem (page 42).
3. **Battery Warranty:** On products equipped with a battery, Roper will replace, without charge to you, any battery which we find to be defective during your first ninety (90) days of ownership. After ninety (90) days, we will exchange the battery charging you 1/12 of the price for a new battery for each full month from the date of the original sale.
4. The warranty period for any products used for rental or commercial purposes is limited to 45 days from the date of original purchase.
5. This warranty applies only to products which have been properly assembled, adjusted and operated in accordance with instructions found in the Product Literature for your product. This warranty does not apply to any product which has been subjected to alteration, misuse, abuse, improper assembly or installation or delivery damage.
6. In the event you have a claim (other than an engine claim) under this warranty, you must return the product to an authorized Roper Outdoor Products service dealer.

Should you have any unanswered questions concerning this warranty, please contact:

Roper Outdoor Power Products
Division of Roper Corporation
Service Department
1905 West Court Street
Kankakee, Illinois 60901

giving the model number, serial number and date of purchase of your product and the name and address of the authorized Roper dealer from whom it was purchased.

This warranty does not apply to incidental or consequential damages and any IMPLIED WARRANTIES ARE LIMITED TO THE SAME TIME PERIODS STATED HEREIN FOR ROPER'S EXPRESSED WARRANTIES. Some states do not allow the limitation of consequential damages or limitations of how long an implied warranty may last, so the above limitations or exclusions may not apply to you. This warranty gives you specific legal rights, and you may have other rights which vary from state to state.

This is a LIMITED WARRANTY within the meaning of that term as defined in the Magnuson-Moss Act of 1975.

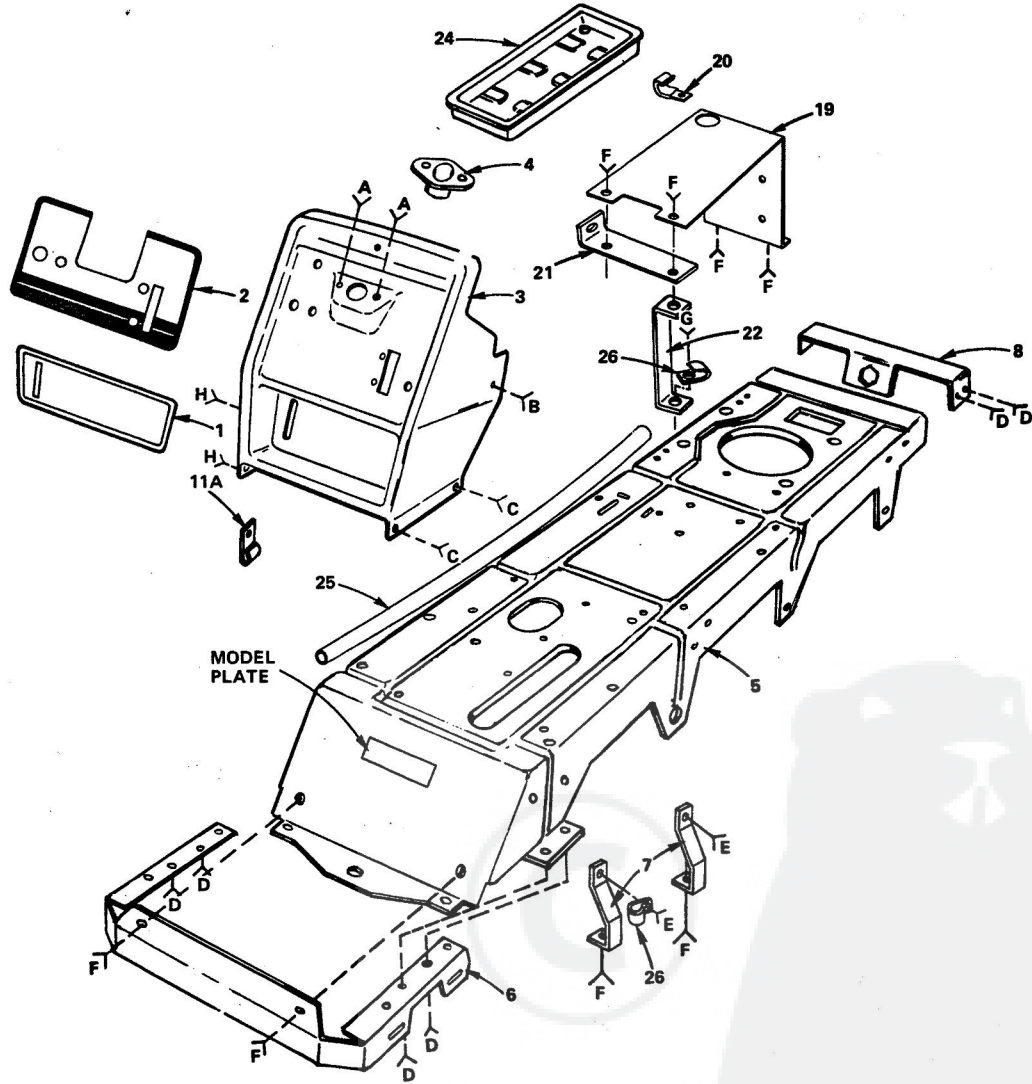
TABLE OF CONTENTS

RULES FOR SAFE OPERATION	1	LUBRICATION CHART	11
ASSEMBLY	2	TROUBLE SHOOTING	12
OPERATION	4	REPAIR PARTS	18
MAINTENANCE	6		

REPAIR PARTS

ROPER 1036 LAWN TRACTOR--MODEL NUMBER L0262AR

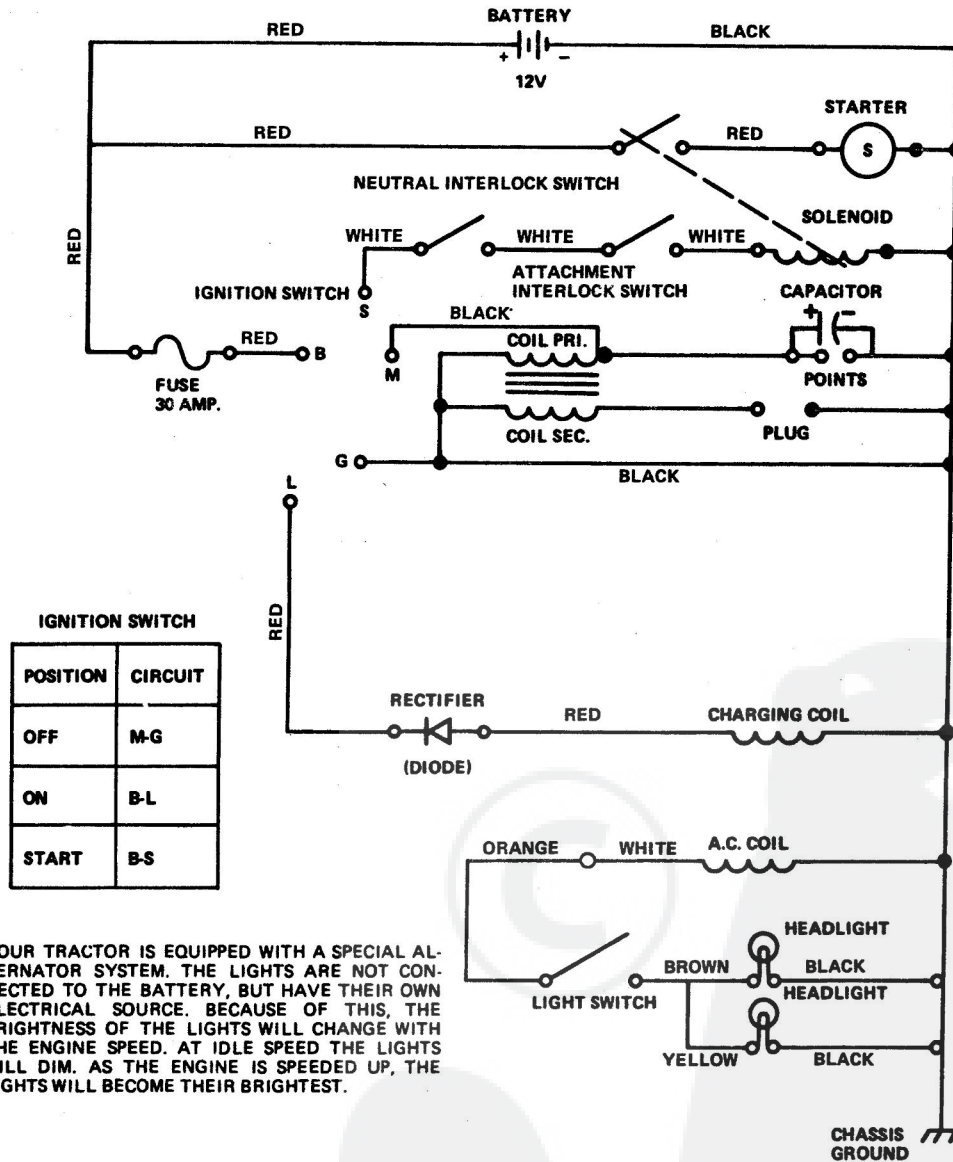
DASHBOARD AND CHASSIS



- | | | | | | | | |
|----------|----------|----------|----------|----------|----------|----------|----------|
| A | B | C | D | E | F | G | H |
| | | | | | | | |
| | | | | | | | |
| | | | | | | | |

ROPER 1036 LAWN TRACTOR--MODEL NUMBER L0262AR

SCHEMATIC DIAGRAM



WIRING INSULATED CLIPS

If Insulated Clips were removed for servicing of unit, they should be replaced to properly secure your wiring.

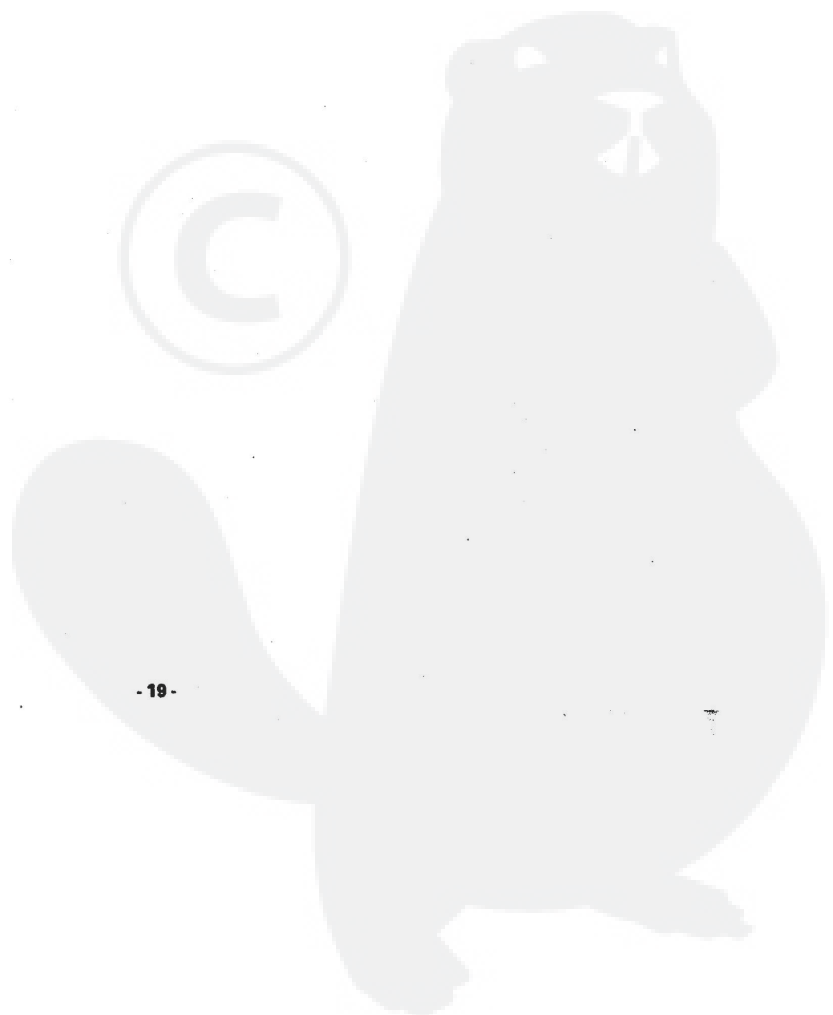
REPAIR PARTS

ROPER 1036 LAWN TRACTOR--MODEL NUMBER L0262AR

DASHBOARD AND CHASSIS

KEY NO.	PART NO.	DESCRIPTION	KEY NO.	PART NO.	DESCRIPTION
1	7881J	Decal - Lower Dash	12	3010P	*Bolt, Hex 5/16 - 18 x 3/4
2	7880J	Decal - Upper Dash	13	532P	Nut, Keps 5/16 - 18 UNC
3	678H649	Dashboard	14	3021P	*Bolt, Hex 3/8 - 16 x 3/4
4	1554J	Bushing, Steering	15	545P	Nut - Crownlock 3/8 - 18 UNC
5	678H704	Chassis Assembly (Less Model Plate)	16	5612P	Screw, Hex Washer Hd. Thd. Form 5/16 - 18 x 1/2
6	678H490	Bearing Bracket	18	575P	Nut - Crownlock 5/16 - 18 UNC
7	678H491	Bearing Bracket Strap	19	678H403	Base - Battery
8	678H494	Axle Support	20	2751R	Clip - Line, Fuel
9	5614P	Screw, Hex Washer Hd. Type AB No. 10 x 1/2	21	678H454	Support - Side, Battery
10	6072P	Machine Screw - Cross Recess Pan Head No. 10 - 24 x 1 - 1/4	22	678H453	Support - Leg, Battery
11	572P	Nut, Keps No. 10 - 24 UNC	23	1654P	Washer 11/32 x 3/4 x 12 Ga.
11A	2521R	Insulated Clip	24	7603J	Battery Tray
			25	7697J	Battery Drain Tube 1/2 I.D.
			26	9297R	Clip - Fuel Line
			27	3009P	*Bolt, Hex 5/16 - 18 x 5/8
			28	7206J	Spacer - Split
			---	7876J	Owners Manual

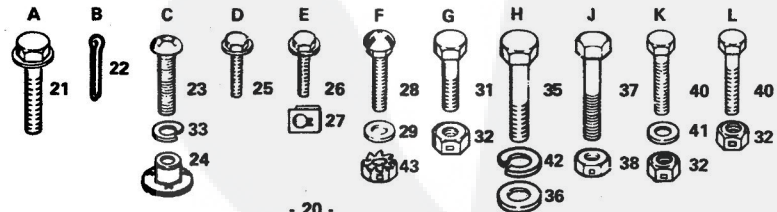
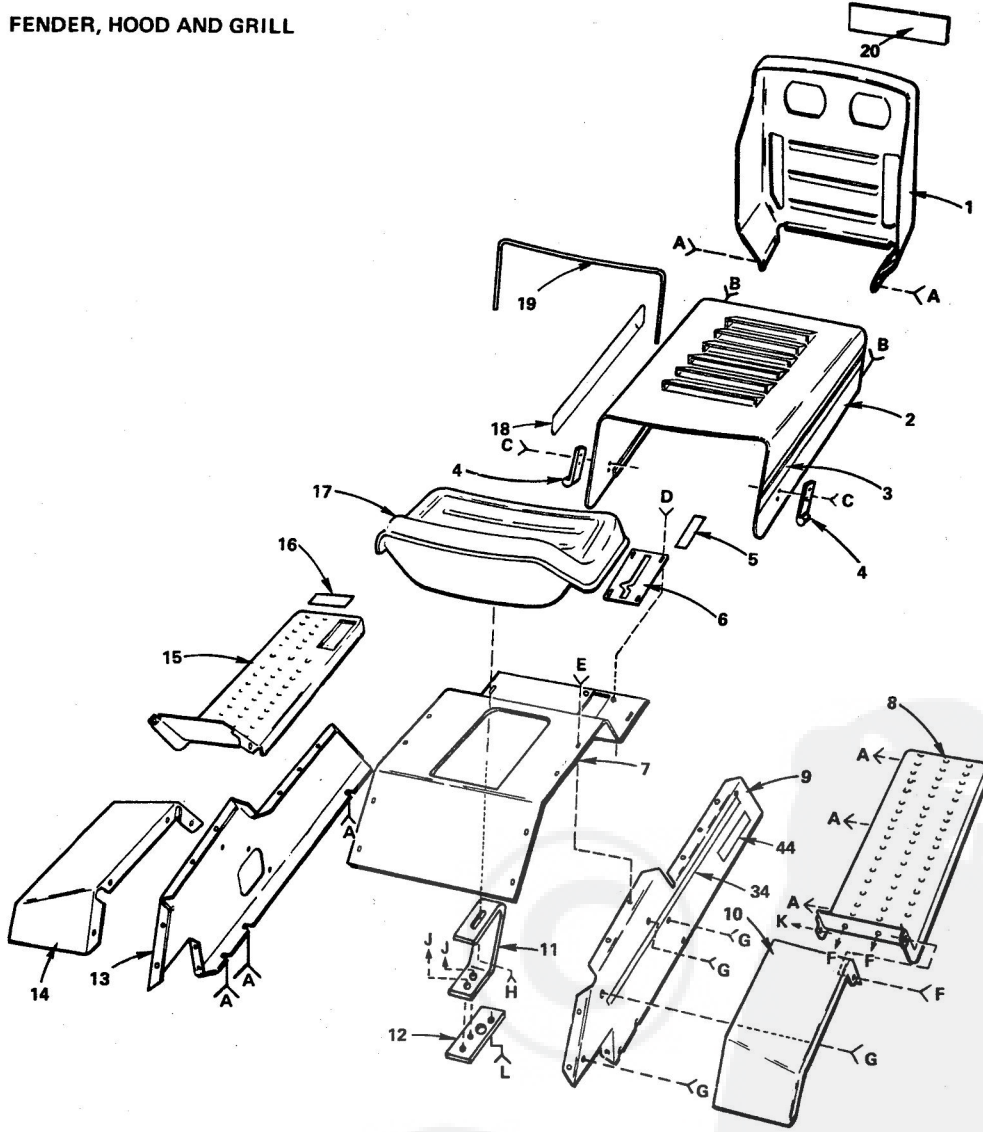
*STANDARD HARDWARE--PURCHASE LOCALLY



REPAIR PARTS

ROPER 1036 LAWN TRACTOR--MODEL NUMBER L0262AR

FENDER, HOOD AND GRILL



REPAIR PARTS

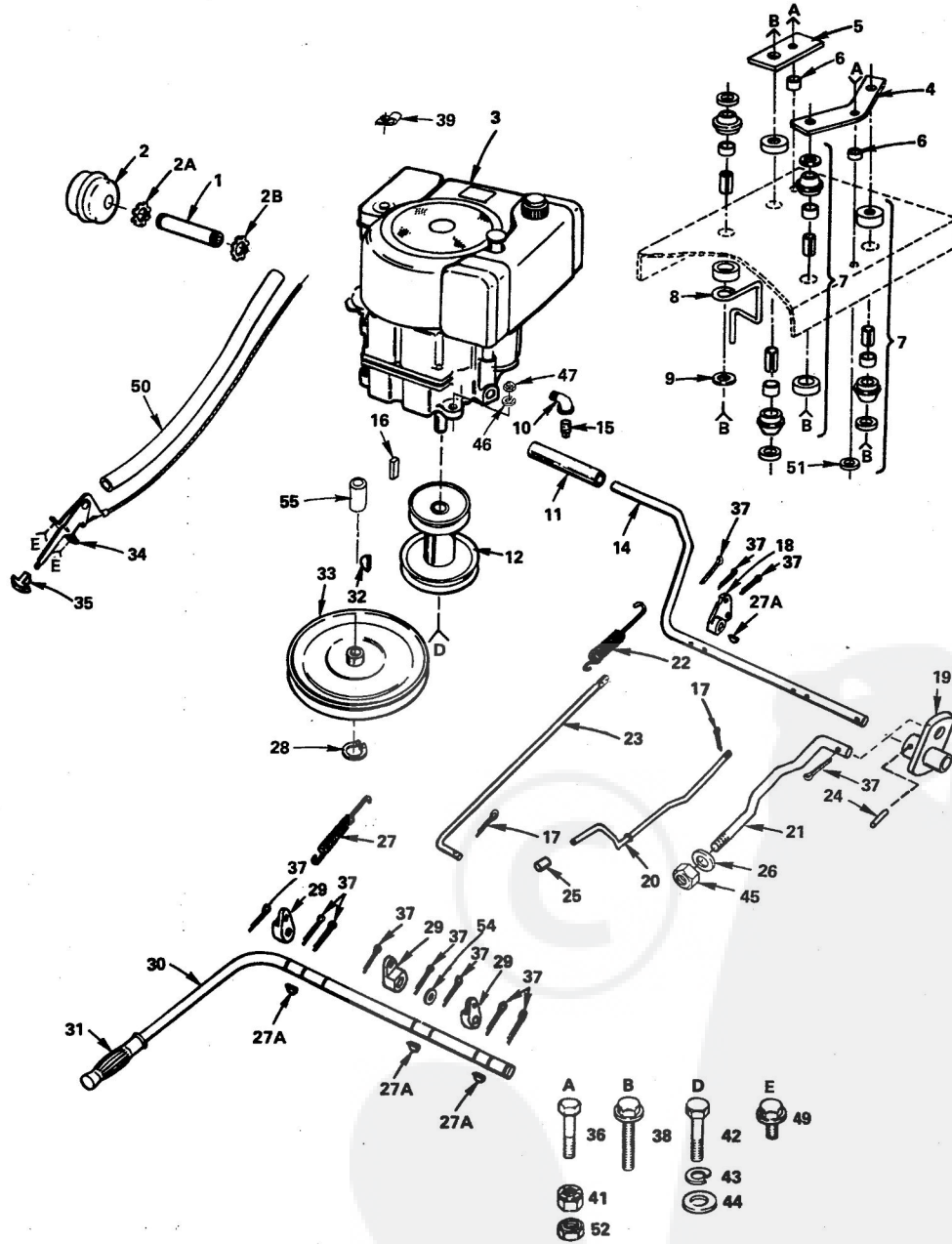
ROPER 1036 LAWN TRACTOR--MODEL NUMBER L0262AR

FENDER, HOOD AND GRILL

KEY NO.	PART NO.	DESCRIPTION	KEY NO.	PART NO.	DESCRIPTION
1	674H231	Grill	24	2029J	Weld Nut, No. 10 - 24 UNC
2	674H232	Hood Assembly	25	5607P	Screw, Sheet Metal Hex Washer Hd. No. 12 - 11 x 3/8 Type A
3	7742J	Decal - Hood, R.H.	26	---	+Screw, Hex Washer Hd. Machine No. 10 - 16 x 1/2 Type AB
4	8889R	Rubber Hood Latch	27	---	+Speednut "U" Type
5	7882J	Decal - Shift Pattern	28	72110404	*Bolt, Carriage Short Shoulder 1/4 - 20 x 1/2 Gr. 5
6	678H676	Shift Plate	29	1507P	Washer 9/32 x 3/4 x 16 Ga.
7	674A223	Top Panel with Silk Screen	31	3008P	Bolt, Hex 5/16 - 18 x 1/2
8	678H654	Foot Rest - R.H.	32	575P	Nut, Crownlock 5/16 - 18 UNC
9	678H709	Side Panel - R.H.	33	1006P	*Lockwasher No. 10 Heavy
10	674H230	Fender - R.H.	34	7923J	Tape - Stripe
11	677H950	Seat Spring	35	3042P	*Bolt Hex 1/2 - 13 x 1
12	3107J	Washer - Seat	36	1625P	Washer 17/32 x 1 - 3/16 x 12 Ga.
13	678H710	Side Panel - L.H.	37	3023P	*Bolt, Hex 3/8 - 16 UNC x 1
14	674H229	Fender - L.H.	38	545P	Nut, Crownlock 3/8 - 16 UNC
15	678H653	Foot Rest - L.H.	40	3010P	*Bolt, Hex 5/16 - 18 UNC x 3/4
16	7879J	Decal - Brake	41	1599P	Washer 11/32 x 3/4 x 16 Ga.
17	1496J	Seat	42	1412P	*Lockwasher 1/2
18	7743J	Decal - Hood, L.H.	43	73510400	Nut - Keps 1/4 - 20 UNC
19	8937R	Hood Strip	44	7883J	Decal - Panel R.H. & L.H. - Varidrive
20	8172J	Decal - Grill			
21	5612P	Screw, Hex Washer Hd. Thrd. Form 5/16 - 18 x 1/2			
22	2503P	*Cotter Pin 3/32 x 3/4			
23	3359P	*Screw, Machine Cross Recess Pan Hd. No. 10 - 24 x 1/2			

*STANDARD HARDWARE--PURCHASE LOCALLY
+ORDER 677A204 (CONSISTS OF 10 EACH KEY NO'S. 26 AND 27)

ROPER 1036 LAWN TRACTOR--MODEL NUMBER L0262AR
CLUTCH-BRAKE AND DRIVE



REPAIR PARTS

ROPER 1036 LAWN TRACTOR--MODEL NUMBER L0262AR

CLUTCH-BRAKE AND DRIVE

KEY NO.	PART NO.	DESCRIPTION	KEY NO.	PART NO.	DESCRIPTION
1	7107J	Pipe - Muffler	28	5038P	Retaining Ring
2	420J	Muffler	29	4481J	Arm - Clutch Mower
2A	9540H	Locknut - Conduit	30	677H960	Mower Clutch Handle
2B	7106J	Locknut - Conduit	31	67653	Handle Grip
3	220707	Engine, 10 H.P. Type No. 0147-01	32	2228M	Woodruff Key
4	1532J	Engine Torque Strap	33	359J	Transmission Pulley
5	1531J	Torque Strap L.H.	34	3375J	Throttle Control (Inc. Key No. 35)
6	4473J	Spacer - Strap, Torque	35	61159	Knob - Throttle Control
7	674A166	+ Iso-mount Assembly	36	3400P	Bolt, Whiz Lock 5/16 - 18 x 1 - 1/2 Gr. 5
8	1666J	V-Belt Snubber	37	2506P	*Cotter Pin 1/8 x 1
9	1513P	*Washer 13/32 x 13/16 x 16 Ga.	38	5613P	Screw, Hex Washer Hd. Thread Rolling Type TT 3/8 - 16 x 2 - 1/2
10	4012P	Elbow - 90° Street 3/8 - 18 NPT	39	2751R	Clip - Fuel Line
11	8883R	Pedal Cover - Attachment	41	583P	Nut, Whiz Lock Flange 5/16 - 18 UNC
12	7731J	Engine Pulley	42	3418P	Bolt - Hex 7/16 - 20 x 1 - 1/2
14	678H455	Foot Pedal Shaft	43	1001P	* Lockwasher 7/16
15	91084	Plug, Drain 3/8 - 18 Sq. Hd.	44	19142405	Washer 7/16 x 1 - 1/2 x 5 Ga.
16	9396E	Key - Square	45	591P	Locknut - Hex with Washer Insert 3/8 - 16
17	2503P	*Cotter Pin 3/32 x 3/4	46	1004P	* Lockwasher 3/8
18	64229	Clutch or Brake Lever	47	501P	* Nut - Hex 3/8 - 16
19	678H705	Brake Arm Assembly	49	5606P	Screw, Hex Washer Hd. Thread Cut. 1/4 - 20 x 1/2 Type 23
20	5977J	Parking Brake Rod	50	7512J	Sleeve - Insulated
21	3264J	Rod - Brake	51	1599P	Washer 11/32 x 3/4 x 16 Ga.
22	1635J	Spring Brake Rod	52	575P	Nut - Crownlock 5/16 - 18 UNC
23	678H495	Brake Rod	54	1580P	Washer 21/32 x 1 x 16 Ga.
24	1572H	Roll Pin	55	2922J	Pulley Spacer
25	71673	Plunger Cap			
26	1528P	Washer 13/32 x 1 - 1/4 x 12 Ga.			
27	58606	Spring - Idler			
27A	9858M1	Key - Woodruff No. 61			

*STANDARD HARDWARE--PURCHASE LOCALLY
+REFER TO PAGE 9 FOR PROPER ASSEMBLY

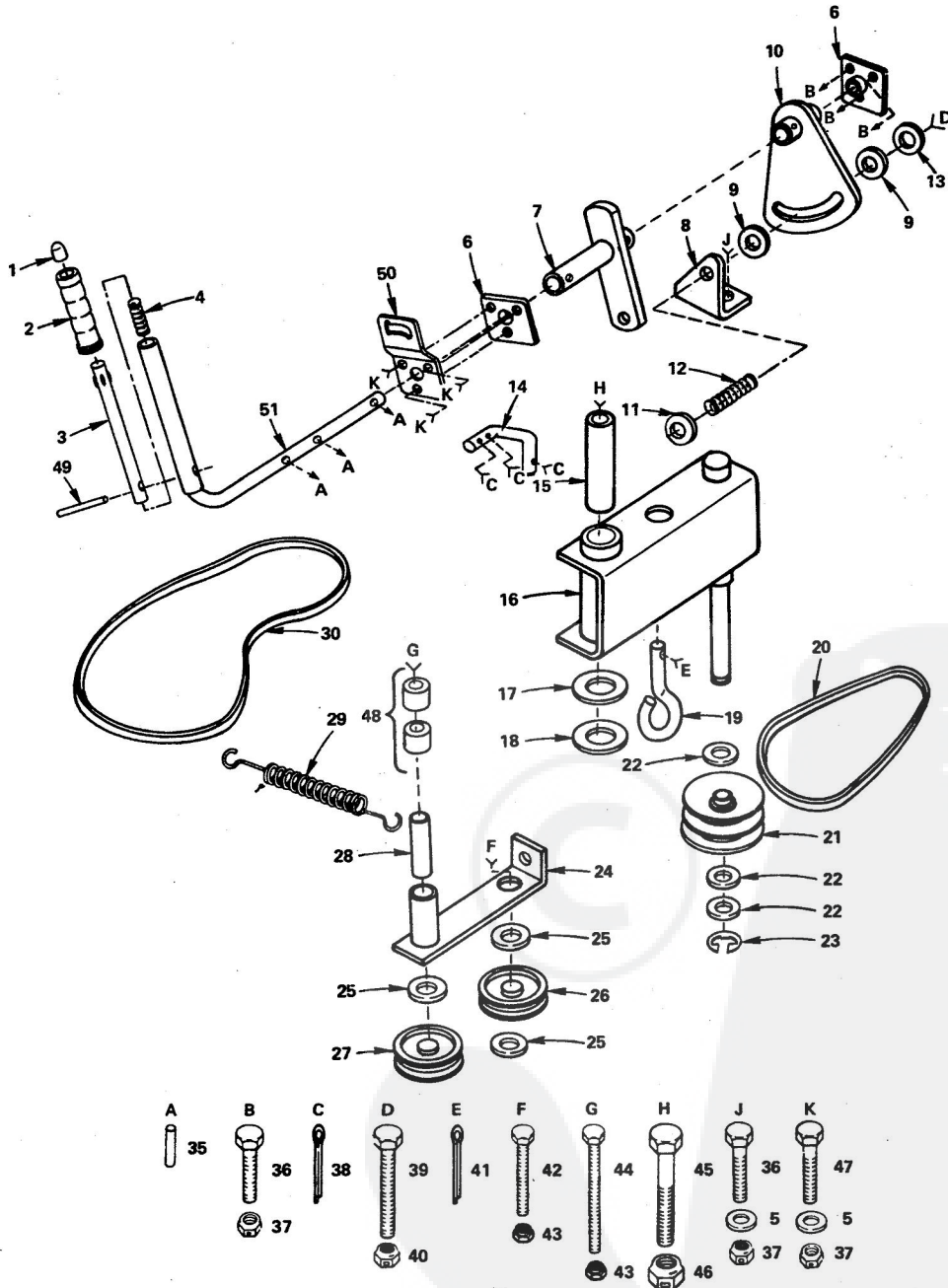
OPTIONAL EQUIPMENT

Spark Arrester 673A223

REPAIR PARTS

ROPER 1036 LAWN TRACTOR--MODEL NUMBER L0262AR

VARIATOR CONTROLS AND TRACTION DRIVE



REPAIR PARTS

ROPER 1036 LAWN TRACTOR--MODEL NUMBER L0262AR

VARIATOR CONTROLS AND TRACTION DRIVE

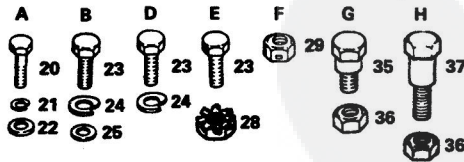
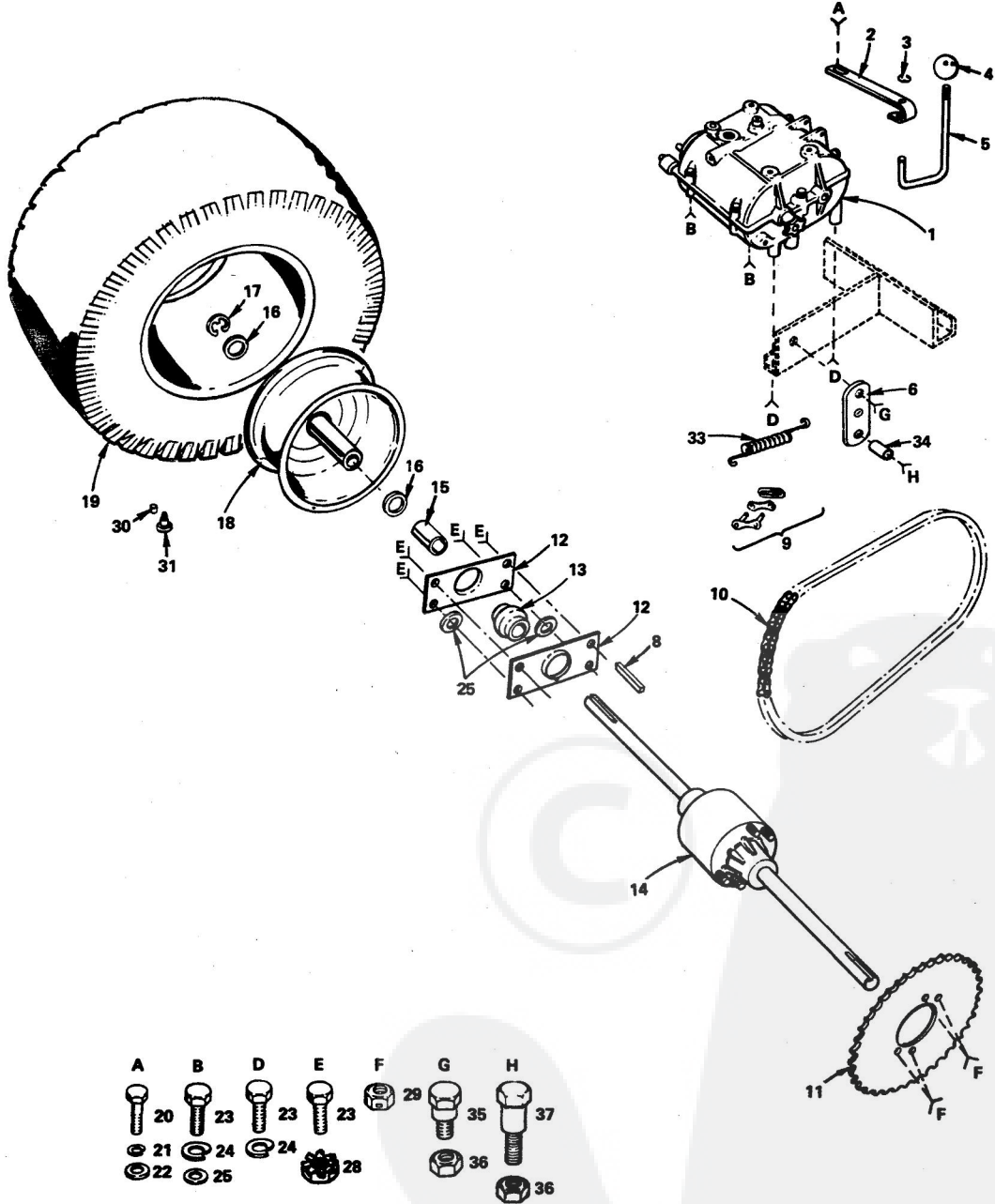
KEY NO.	PART NO.	DESCRIPTION	KEY NO.	PART NO.	DESCRIPTION
1	9479R	Lever - Plunger Cap	25	1507P	Washer 13/32 x 3/4 x 16 Ga.
2	2895H	Handle Grip	26	4178H	Flat Idler
3	678H707	Rod - Plunger	27	8846R	"V" Groove Idler
4	71669	Spring	28	2918J	Inner Sleeve
5	1599P	Washer 11/32 x 3/4 x 16 Ga.	29	9503H	Idler Spring
6	3722J	Bearing - Extruded	30	2921J	V-Belt - Varidrive, Rear
7	677A249	Control Arm Assembly	35	2882J	Drive Pin
8	3108J	Bracket - Friction	36	3010P	*Bolt - Fin. Hex 5/16 - 18 UNC x 3/4
9	2948J	Disc - Friction	37	575P	Nut Crownlock 5/16 - 18 UNC
10	677A257	Friction Arm Assembly	38	2506P	*Pin Cotter 1/8 x 1
11	1645P	Washer 11/32 x 1 x 10 Ga.	39	74780544	*Bolt - Fin. Hex 5/16 - 18 x 2 - 3/4 Gr. 5
12	7241J	Spring - Compression	40	553P	Gripco Crownlock, 5/16 - 18
13	1646P	Washer 11/32 x 1 - 1/2 x 10 Ga.	41	2511P	Pin - Cotter 3/16 x 1
14	3329J	Rod Control	42	3028P	*Bolt, Hex 3/8 - 16 UNC x 1 - 3/4
15	2944J	Sleeve - Inner	43	545P	Nut Crownlock 3/8 - 16 UNC
16	678H706	Channel Assembly	44	3363P	Bolt, Hex 3/8 - 16 UNC x 3 - 1/4
17	75054	Hardened Washer	45	3047P	Bolt, Hex Fin. 1/2 - 13 x 3 - 1/4
18	1500P	*Washer - 17/32 x 1 - 1/16 x 13 Ga.	46	595P	Nut - Crownlock 1/2 - 13 UNC
19	2940J	Support - Rod, Brake	47	3011P	*Bolt, Hex 5/16 - 18 x 1
20	2920J	V-Belt - Varidrive, Front	48	677A362	Dirt Seal (2 each)
21	2919J	Sheave - Variator	49	3401J	Drive Pin
22	206J	Hardened Washer	50	3371J	Bracket - Neutral
23	5025P	Klip Ring	51	677A313	Control Lever Assembly
24	677A240	Idler Bracket Assembly			

*STANDARD HARDWARE--PURCHASE LOCALLY

REPAIR PARTS

ROPER 1036 LAWN TRACTOR--MODEL NUMBER L0262AR

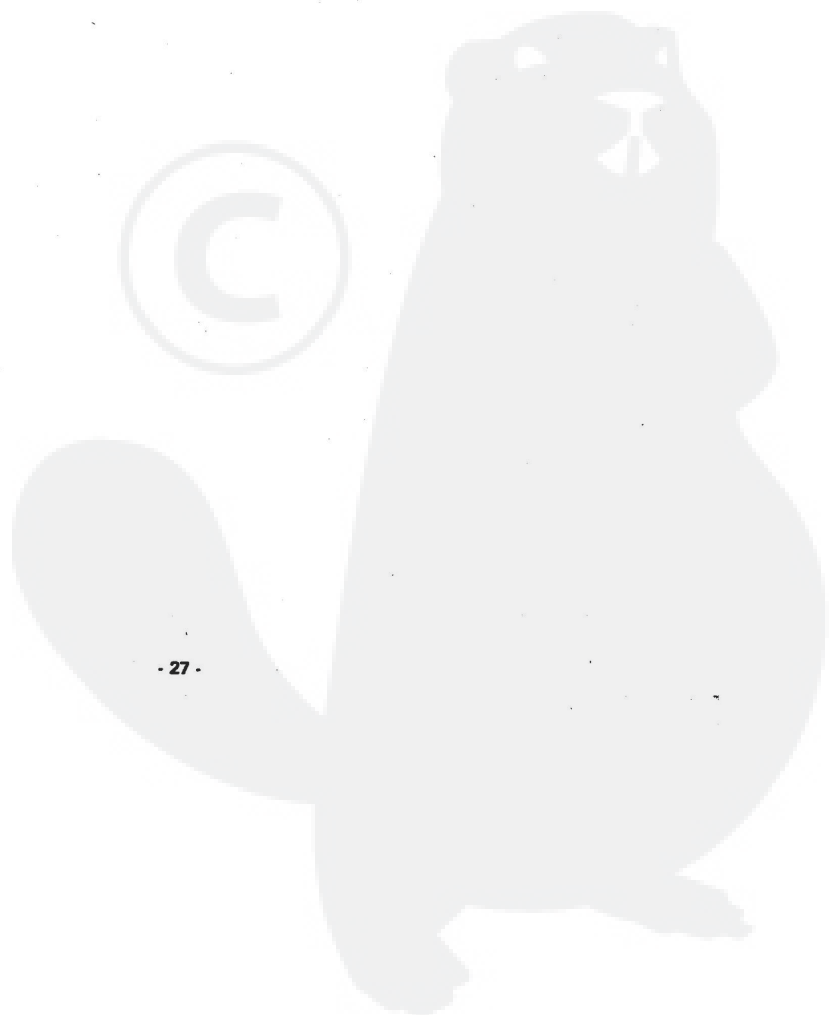
TRANSMISSION AND REAR WHEEL



REAR PARTS
ROPER 1036 LAWN TRACTOR--MODEL NUMBER L0262AR
TRANSMISSION AND REAR WHEEL

KEY NO.	PART NO.	DESCRIPTION	KEY NO.	PART NO.	DESCRIPTION
1	143.742	Transmission Assembly	16	1617P	Washer 25/32 x 1 - 1/4 x 16 Ga. (2 to 6 as required)
2	360J	Shift Lever Arm	17	5000P	E-Ring
3	5006P	E-Ring	18	71652	Rim 8" - Rear
4	9439M	Knob	19	71653	Tire - Soft Trac 18 x 9.50 x 8
5	348J	Shift Lever	20	3244P	Bolt, Hex 1/4 - 28 x 5/8 Gr. 5
6	678H493	Arm - Tension	21	1002P	*Lockwasher 1/4
8	2703J	Key, Square 3/16 x 2	22	1507P	Washer 9/32 x 3/4 x 16 Ga.
9	276H	Kit - Link Repair	23	3010P	*Bolt, Hex 5/16 - 18 x 3/4
10	7101J	Chain	24	1003P	*Lockwasher 5/16
11	1641J	Differential Sprocket	25	1654P	Washer 11/32 x 3/4 x 12 Ga.
12	68571	Bearing Cup	28	532P	Nut, Keps 5/16 - 18 UNC
13	62346	Rear Axle Bearing	29	1685H	Locknut 5/16 - 18 UNC
14	143.197	Differential Assembly	30	59192	Valve Cap
15	2936J	Wheel Spacer	31	65139	Valve Stem
			33	58606	Spring
			34	2929J	Roller
			35	2930J	Bolt - Shoulder
			36	545P	Nut - Crownlock 3/8 - 16 UNC
			37	2931J	Bolt - Shoulder

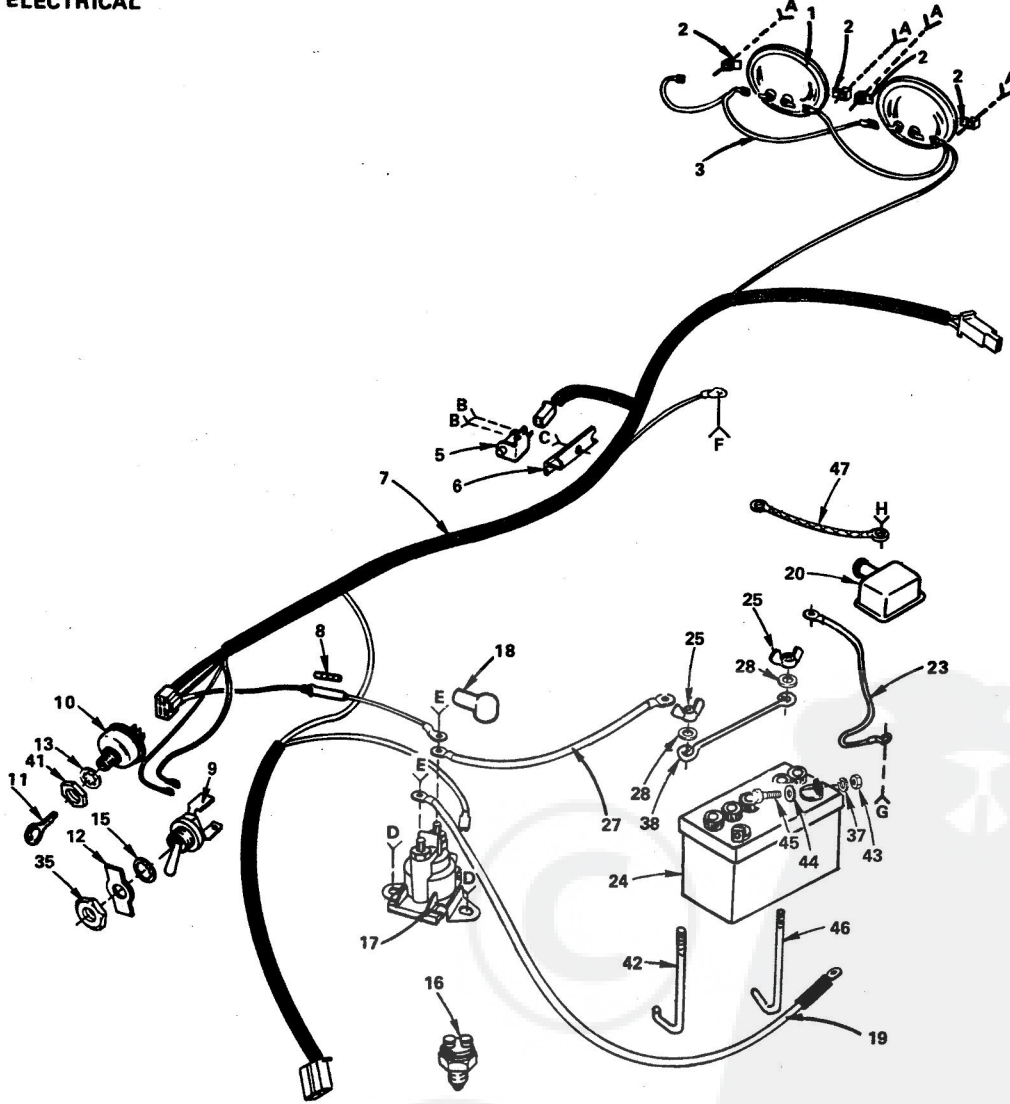
*STANDARD HARDWARE--PURCHASE LOCALLY















REPAIR PARTS

ROPER 1036 LAWN TRACTOR-MODEL NUMBER L0262AR

ELECTRICAL



- | | | | | | | | |
|---|---|---|--|---|---|--|---|
| A | B | C | D | E | F | G | H |
|  |  |  |  |  |  |  |  |
|  | | | 
 |  | | | |

REPAIR PARTS

ROPER 1036 LAWN TRACTOR--MODEL NUMBER L0262AR

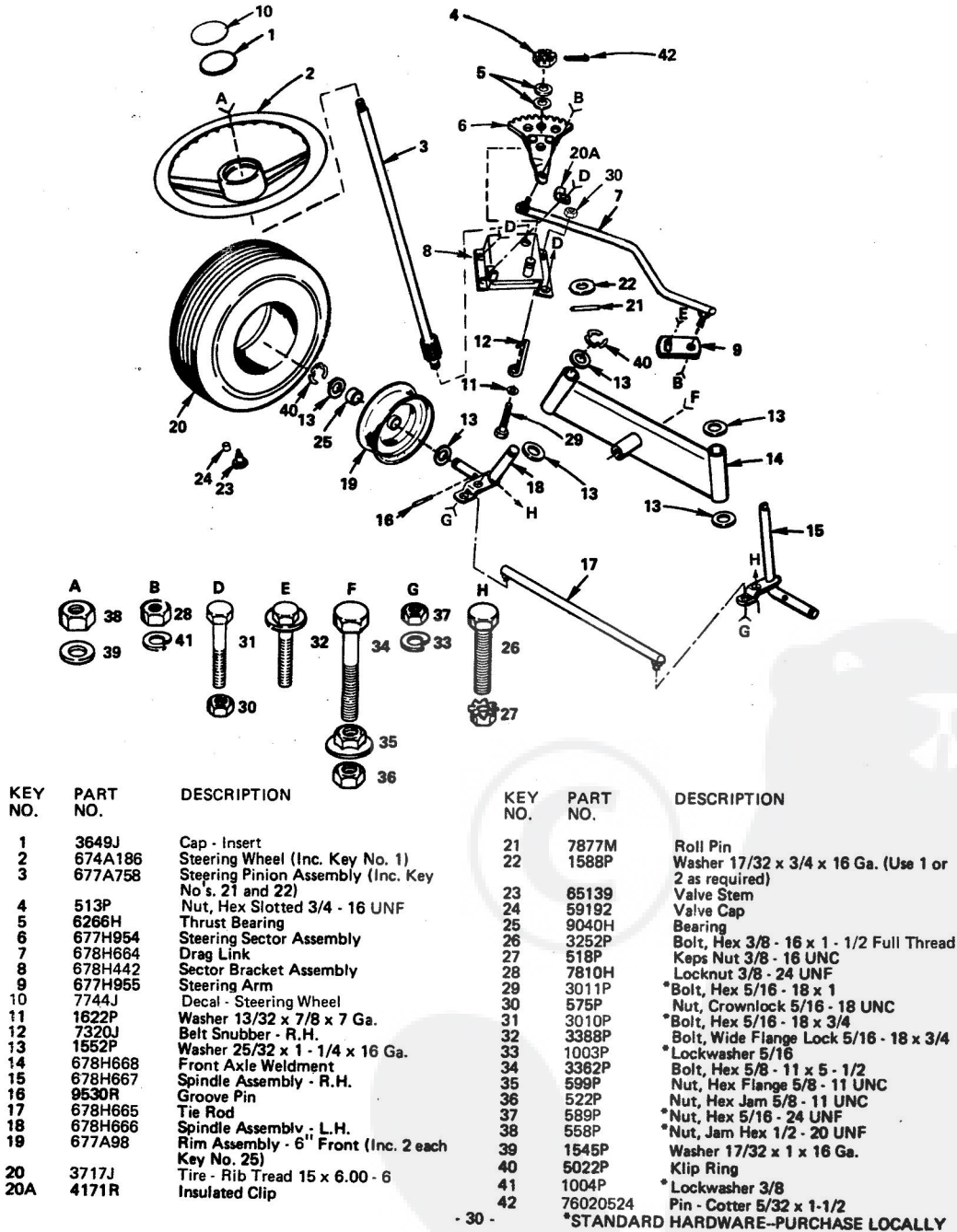
ELECTRICAL

KEY NO.	PART NO.	DESCRIPTION
1	6452R	Headlight
2	8794R	Headlight Clamp
3	8031R	Headlight Ground Wire
5	7755R	Interlock Switch
6	678H497	Interlock Switch Bracket
7	5978J	Wiring Harness
8	6347R	Fuse - 30 Amp.
9	4482J	Light Switch
10	4406R	Ignition Switch
11	7552H	Key
12	7682R	Plate - On/Off
13	1411P	Lockwasher, Internal Tooth 5/8
15	7319R	Lockwasher, Internal Tooth 7/16
16	7452S	Interlock Switch
17	2008J	Solenoid
18	719J	Terminal Cover
19	5906J	Cable Assembly (Solenoid to Starter)
20	225J	Terminal Cover
23	2955J	Cable Assembly (Ground Wire)
24	228J	Battery Pack
25	577P	*Wing Nut 1/4 - 20 UNC
27	5907J	Battery Cable (To Solenoid)
28	1507P	Washer 9/32 x 3/4 x 16 Ga.
29	3226P	*Machine Screw, Cross Recess Truss Hd. No. 10 - 24 x 1
30	4632H	Locknut No. 10 - 24 UNC
31	6064P	Screw, Hex Hd. Washer Sems Type T No. 10 - 24 x 3/8
32	5612P	Screw, Hex Washer Hd. Thread Form 5/16 - 18 x 1/2
33	3454P	Mach. Screw Pan Hd. Sltd. 1/4 - 20 x 1/2
34	73510400	Keys Nut 1/4 - 20 UNC
35	7320R	Nut - Hex Face
36	555P	*Nut, Hex Jam 1/4 - 20 UNC
37	1002P	*Lockwasher 1/4
38	67187	Battery Rod
39	1408P	Lockwasher Ext. Tooth 5/16
41	3258J	Nut - Flat
42	70456	Battery Bolt
43	503P	*Hex Nut 1/4 - 20 UNC
44	1506P	*Washer 9/32 x 5/8 x 16 Ga.
45	3003P	*Hex Bolt 1/4 - 20 x 3/4
46	5959J	Bolt Hook Battery
47	6011J	Ground Strap
48	545P	Gripco Crownlock Nut 3/8 - 16
49	11050400	Lockwasher, Ext. Tooth 1/4
50	3008P	Bolt - Hex 5/16 - 18 x 1/2
51	1415P	Lockwasher, Regular 1/4

*STANDARD HARDWARE--PURCHASE LOCALLY

ROPER 1036 LAWN TRACTOR--MODEL NUMBER L0262AR

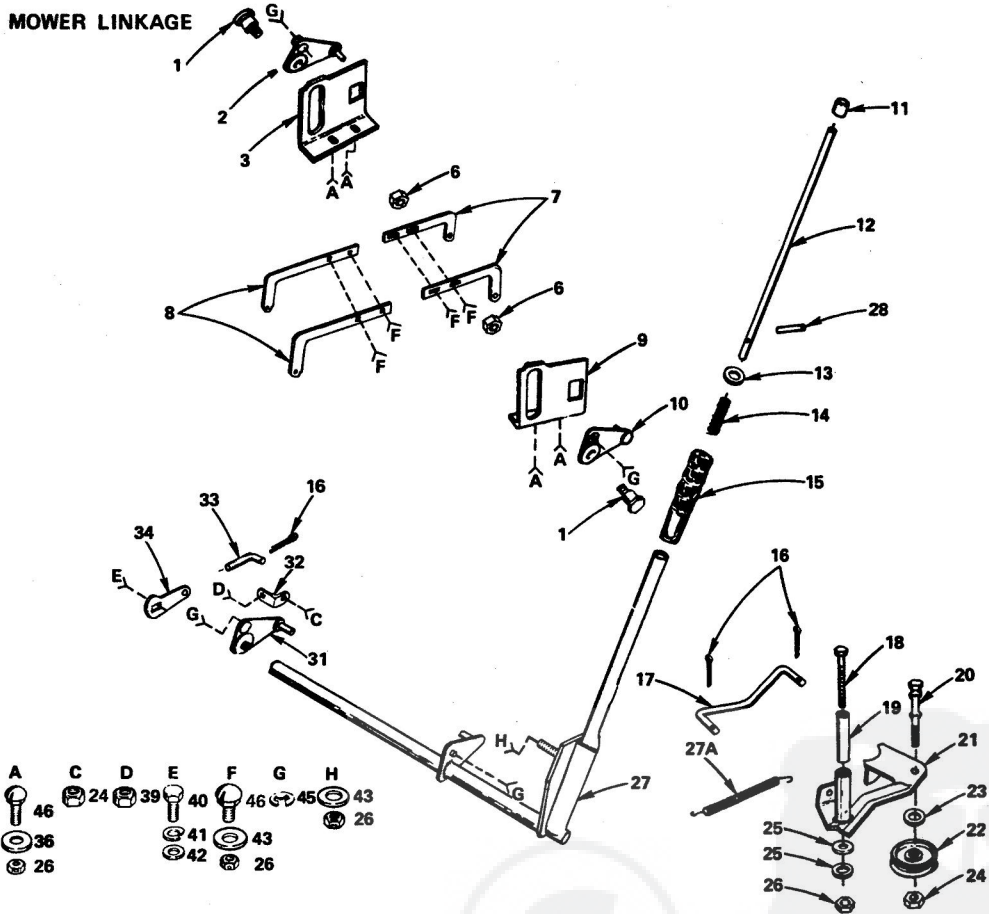
STEERING AND FRONT AXLE



REPAIR PARTS

ROPER 1036 LAWN TRACTOR-MODEL NUMBER L0262AR

MOWER LINKAGE



KEY NO.	PART NO.	DESCRIPTION
1	4792J	Bolt, Shoulder
2	678H457	Arm Assembly - L.F.
3	678H458	Slide Bracket - L.H.
6	595P	Nut, Crownlock 1/2 - 13 UNC
7	512J	Lift Link Adjusting
8	1658J	Lift Link
9	678H459	Slide Bracket - R.H.
10	678H460	Arm Assembly - R.F.
11	9479R	Lever Plunger Cap
12	678H461	Rod Plunger
13	1615P	Washer 15/32 x 3/4 x 16 Ga.
14	71669	Spring
15	1747J	Grip
16	2505P	Cotter Pin 1/8 x 3/4
17	678H496	Mower Clutch Link
18	3409P	Bolt, Hex 5/16 - 18 x 4 - 3/4
19	1850J	Sleeve, Inner
20	1685J	Bolt, Headed
21	677H962	Mower Idler Bracket Weldment
22	7221J	Idler Pulley - Mower
23	1507P	Washer 13/32 x 3/4 x 16 Ga. (0 to 3 as Required)

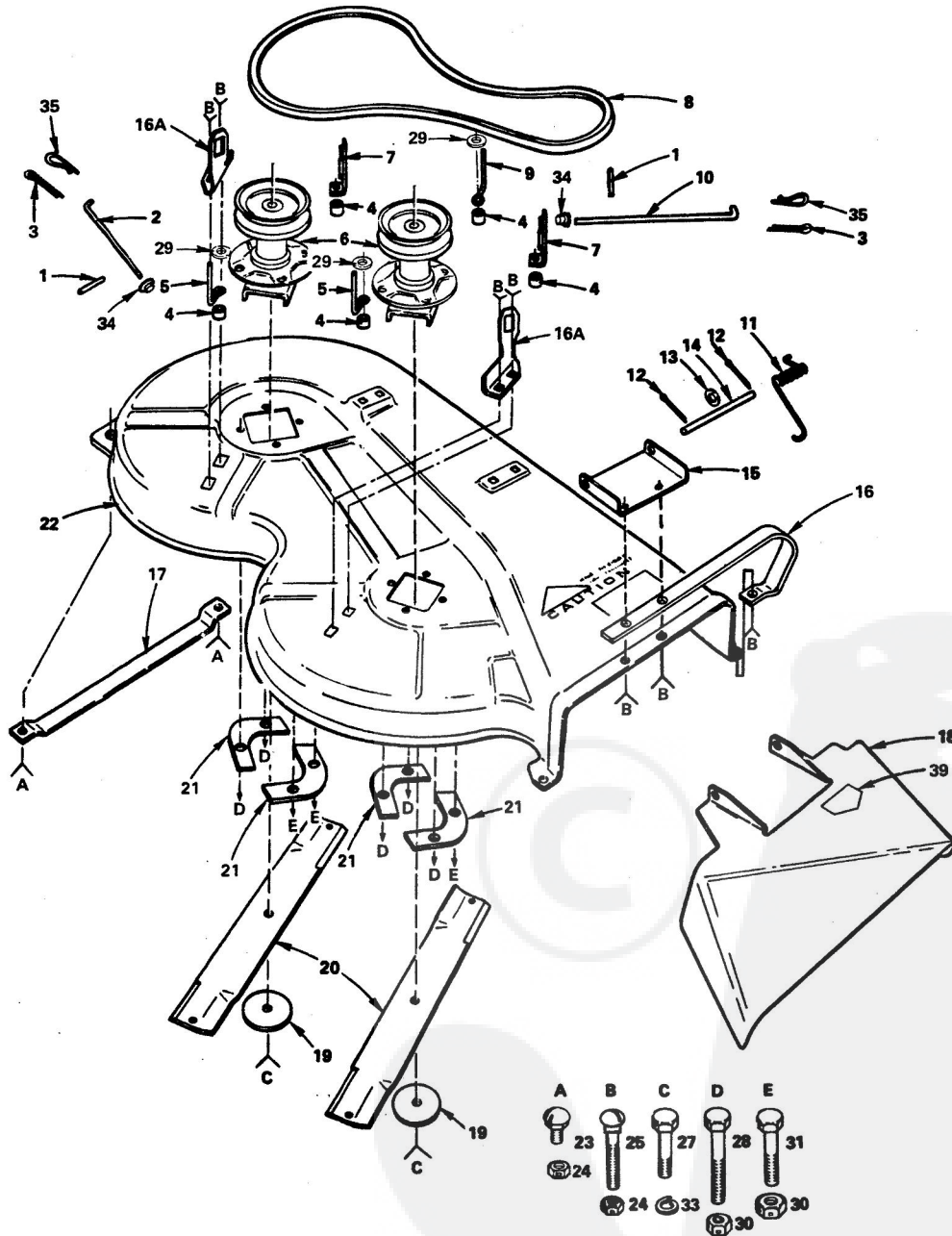
KEY NO.	PART NO.	DESCRIPTION
24	545P	Crownlock Nut 3/8 - 16 UNC
25	1509P	Washer 5/16 x 3/4 x 16 Ga. (2 to 3 as required)
26	575P	Nut, Crownlock 5/16 - 18 UNC
27	677H972	Lift Shaft Assembly
27A	7458J	Spring
28	5005J	Drive Lock Pin
31	678H462	Arm Assembly-Lift L.R.
32	678H498	Adjustment Bracket
33	678H499	Adjustment Rod
34	678H463	Adjustment Arm
36	1658P	Washer 11/32 x 5/8 x 14 Ga.
39	7810H	Locknut 3/8 - 24 UNF
40	3003P	* Bolt, Hex 1/4 - 20 x 3/4
41	1002P	* Lockwasher 1/4
42	1585P	Washer 9/32 x 1 - 1/4 x 16 Ga.
43	1599P	Washer 11/32 x 3/4 x 16 Ga.
45	5006P	E-Ring
46	67P	Bolt, Carriage 5/16 - 18 x 3/4 Gr. 5

*STANDARD HARDWARE-PURCHASE LOCALLY

REPAIR PARTS

ROPER 1036 LAWN TRACTOR--MODEL NUMBER L0262AR

MOWER



REPAIR PARTS

ROPER 1036 LAWN TRACTOR--MODEL NUMBER L0262AR

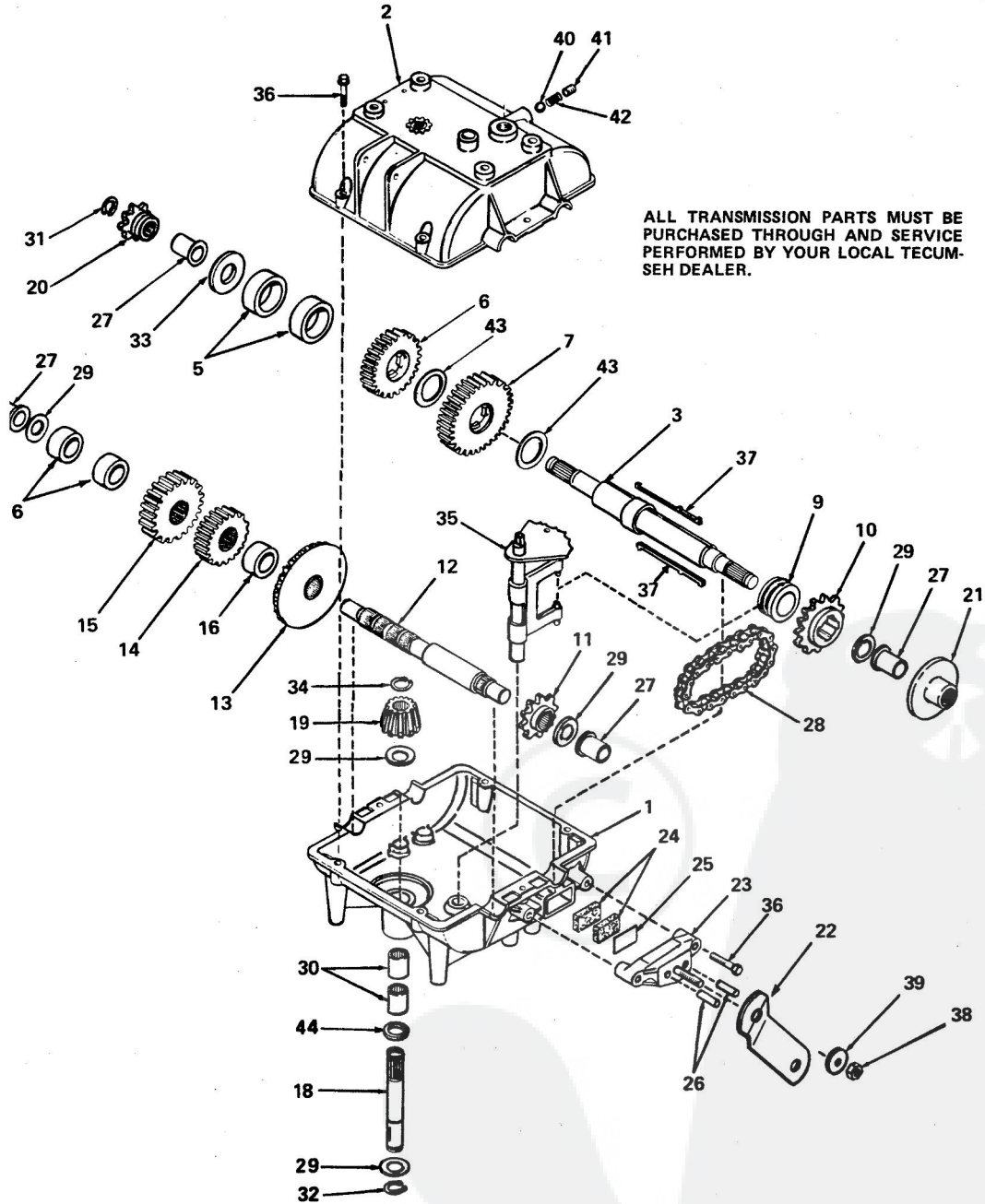
MOWER

KEY NO.	PART NO.	DESCRIPTION	KEY NO.	PART NO.	DESCRIPTION
1	53997	Spring Pin 1/8 x 3/4	17	678H473	Skid - Housing, L.H.
2	1186J	Jackshaft Brake Rod - L.H.	18	674A183	Deflector with Silk Screen (Discharge Guard)
3	2505P	Cotter Pin 1/8 x 3/4	19	678H500	Washer 25/64 x 2 - 3/8 x 8 Ga.
4	678H503	Spacer - Tube, Split	20	75270	Blade
5	678H501	Belt Snubber - Mower	21	678H465	Plate - Support, Jackshaft
6	678H280	Jackshaft Assembly	22	674A184	Mower Housing with Silk Screen
7	677A909	Brake Assembly	23	73P	Bolt, Carriage 5/16 - 18 x 5/8 Gr. 5
8	518J	Drive Belt - Mower	24	553P	Gripco, Crownlock Nut 5/16 - 18 Gr. B
9	678H502	Belt Snubber	25	67P	Bolt, Carriage 5/16 - 18 x 3/4 Gr. 5
10	1185J	Jackshaft Brake Rod - R.H.	27	3341P	* Bolt, Hex 3/8 - 24 x 1 Gr. 5
11	71526	Discharge Spring	28	3027P	* Bolt, Hex 3/8 - 16 x 1 - 1/2
12	2503P	* Cotter Pin 3/32 x 3/4	29	1507P	Washer 13/32 x 3/4 x 16 Ga.
13	1623P	Washer 11/32 x 7/8 x 16 Ga.	30	545P	Nut, Crownlock 3/8 - 16 UNC
14	71555	Hinge Rod	31	3023P	* Bolt, Hex 3/8 - 16 x 1
15	678H464	Deflector Bracket	33	1004P	* Lockwasher 3/8, Heavy
16	678H630	Housing Skid	34	9423R	Push Nut
16A	678H472	Lift Bracket	35	4921H	Retainer Spring
			39	3495J	Label - Warning C.P.S.C.

*STANDARD HARDWARE--PURCHASE LOCALLY

REPAIR PARTS

ROPER 1036 LAWN TRACTOR--MODEL NUMBER L0262AR



REPAIR PARTS

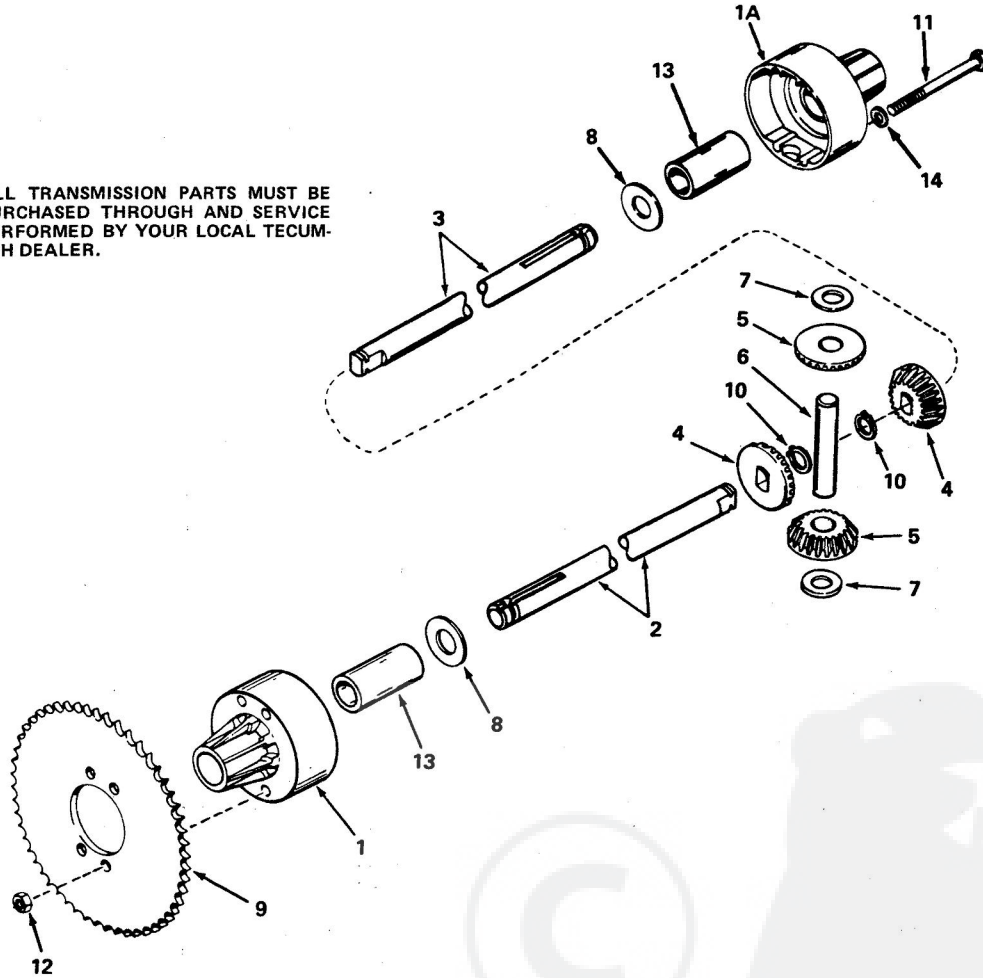
ROPER 1036 LAWN TRACTOR--MODEL NUMBER L0262AR

KEY NO.	PART NO.	DESCRIPTION
	143.742	Complete Transmission
1	770061	Case, Transmission
2	772070	Cover, Transmission
3	776162	Shaft, Output and Brake
5	786072	Spacer
6	778123	Gear, Spur (25 Teeth)
7	778125	Gear, Spur (35 Teeth)
9	784266	Collar, Shift
10	786060	Sprocket (14 Teeth)
11	786061	Sprocket (10 Teeth)
12	776134	Shaft, Counter
13	778137	Gear, Bevel (42 Teeth)
14	778136	Gear, Spur (15 Teeth)
15	778127	Gear, Spur (25 Teeth)
16	786071	Spacer
18	776199	Shaft, Input
19	778113	Bevel Pinion, Input
20	786047	Sprocket (8 Teeth)
21	790003	Disk, Brake
22	790023	Lever, Brake
23	790005	Holder, Brake Pad
24	790006	Pad, Brake
25	790007	Plate, Brake Pad
26	786026	Pin, Dowel
27	780105	Bushing, Flanged
28	786062	Chain, Roller (No. 41 chain, 22 links)
29	780072	Race, Thrust
30	780086	Bearing, Needle
31	792072	Ring, Retaining
32	792035	Ring, Retaining
33	780109	Washer
34	788040	Ring, Retaining
35	784270	Rod & Fork Ass'y., Shift
36	792073	Screw, Hex Hd. Taptite, 1/4 - 20 x 1 - 1/4
37	792089A	Key
38	792075	Nut, Lock 5/16 - 24
39	792076	Washer, Flat, 5/16
40	792077	Ball, Steel, 5/16"
41	792078	Screw, Set, 3/8 - 16 x 3/8
42	792079	Spring
43	780108	Washer, Thrust
44	792001	"O" Ring

REPAIR PARTS

ROPER 1036 LAWN TRACTOR--MODEL NUMBER L0262AR

ALL TRANSMISSION PARTS MUST BE PURCHASED THROUGH AND SERVICE PERFORMED BY YOUR LOCAL TECUMSEH DEALER.

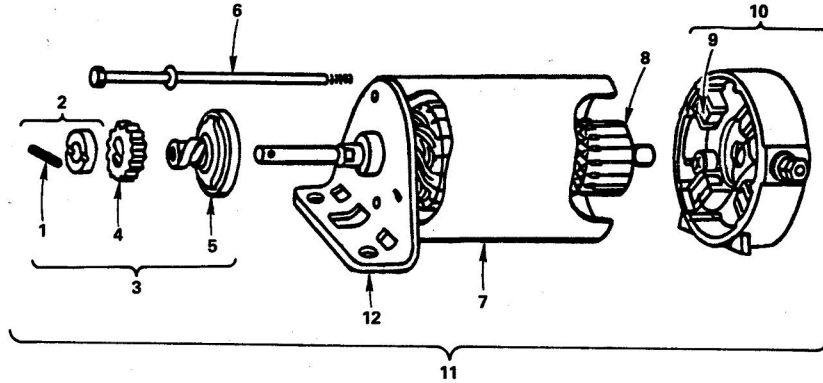


KEY NO.	PART NO.	DESCRIPTION	KEY NO.	PART NO.	DESCRIPTION
1	143.197	Complete Differential	11	792041	Screw, Hex hd., 5/16 - 18 x 3 - 3/4
	774344	Housing Differential carrier (Inc. No. 13)	12	792042	Nut, Lock, 5/16 - 18
1A	774345	Housing, Differential carrier (Inc. No. 13)	13	780077	Bushing
2	774401	Axle (13 - 5/64" long)	14	792061	Washer
3	774329	Axle (13 - 15/16" long)			
4	778067	Gear, Bevel			
5	778068	Gear, Pinion			
6	786040	Pin, Drive			
7	780096	Washer, Thrust			
8	780001	Washer			
9	786041	Sprocket			
10	792018	Ring, Snap			

**ROPER 1036 LAWN TRACTOR--MODEL NUMBER L0262AR
ENGINE--MODEL NUMBER 220707, TYPE NUMBER 0147-01**

STARTER MOTOR GROUP

ALL ENGINE PARTS MUST BE PURCHASED THROUGH AND SERVICE PERFORMED BY YOUR LOCAL BRIGGS AND STRATTON DEALER.



KEY NO.	PART NO.	DESCRIPTION
1	93754	Roll Pin
2	391462	Retainer and Pin (Inc. Key No. 1)
3	391461	Drive Assembly (Inc. Key No's. 1, 2, 4 & 5)
4	280104	Gear
5	391135	Clutch Assembly
6	391706	Thru Bolt Assembly

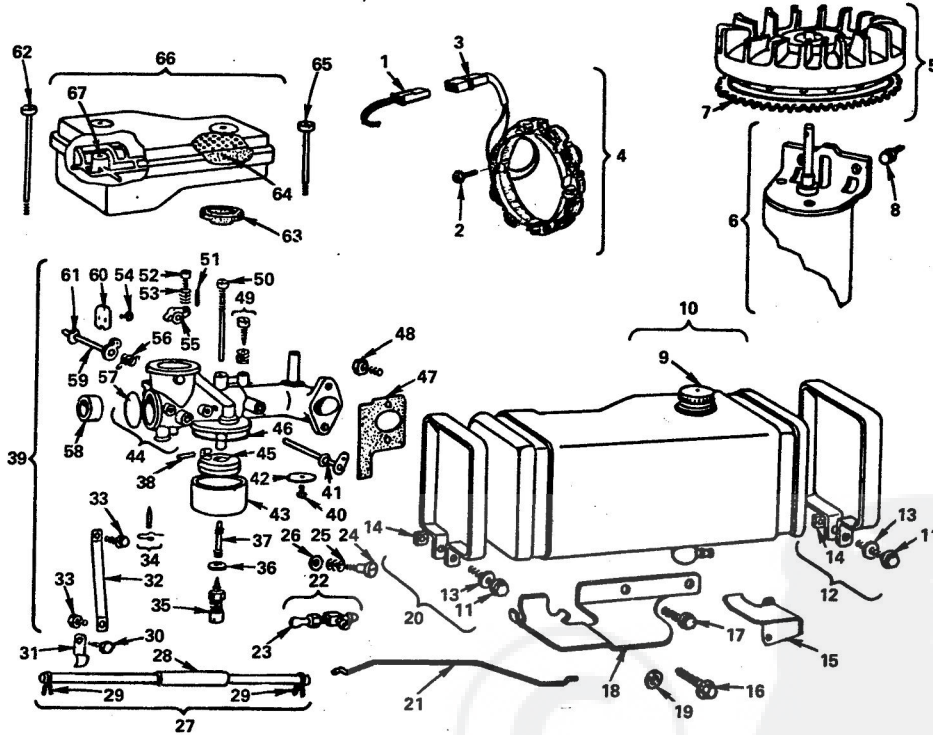
KEY NO.	PART NO.	DESCRIPTION
7	392744	Housing Assembly
8	392747	Armature Assembly
9	391705	Brush Assembly
10	390846	End Cap Assembly - Commutator (Inc. Key No. 9)
11	392749	Motor and Drive Assembly (Inc. Key No's. 1, 2, 3, 4, 5, 6, 7, 8, 9, 10 & 12)
12	392061	End Cap Assembly Drive

REPAIR PARTS

ROPER 1036 LAWN TRACTOR--MODEL NUMBER L0262AR
ENGINE--MODEL NUMBER 220707, TYPE NUMBER 0147-01

AIR CLEANER AND CARBURETOR

ALL ENGINE PARTS MUST BE PURCHASED THROUGH AND SERVICE PERFORMED BY YOUR LOCAL BRIGGS AND STRATTON DEALER.



REPAIR PARTS

ROPER 1036 LAWN TRACTOR--MODEL NUMBER L0262AR
ENGINE--MODEL NUMBER 220707, TYPE NUMBER 0147-01

AIR CLEANER AND CARBURETOR

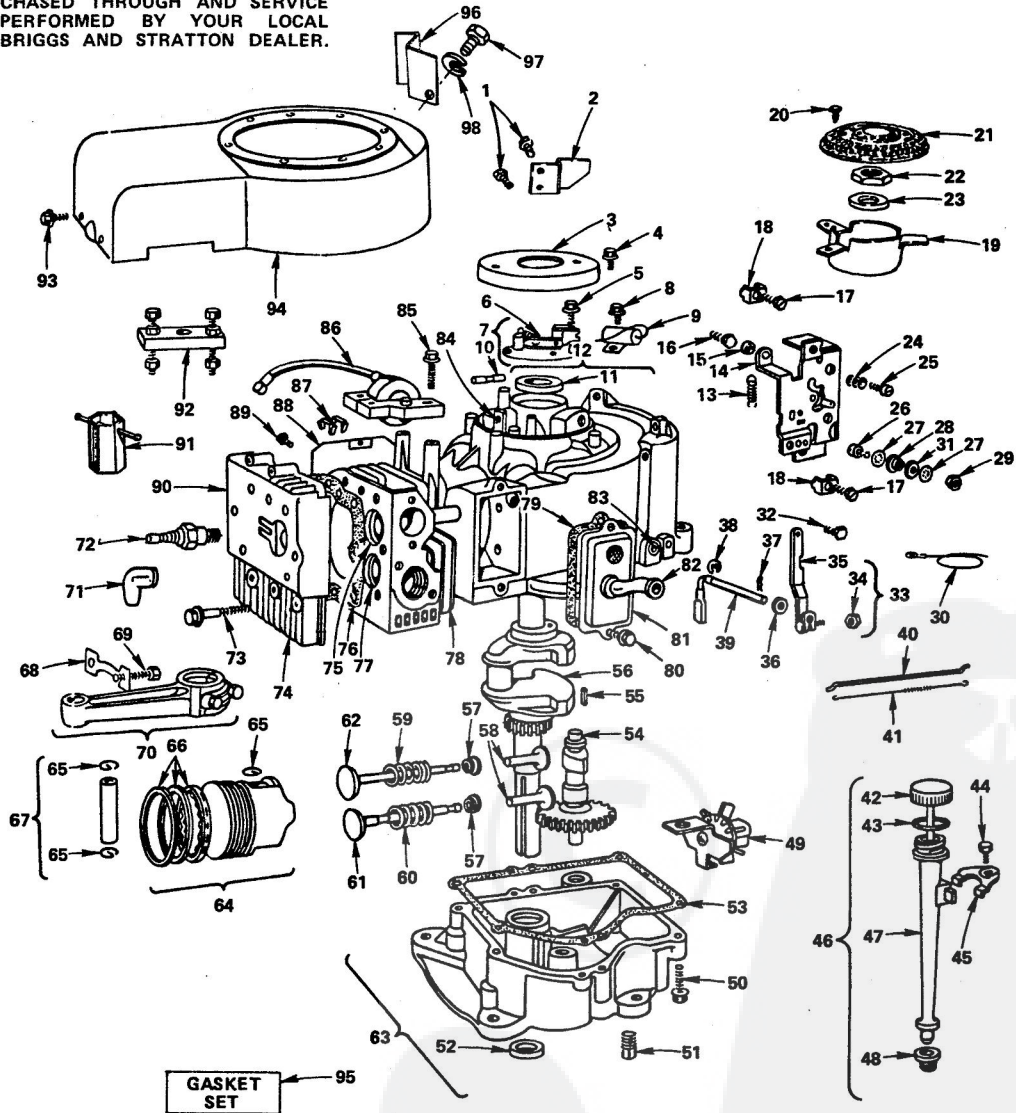
KEY NO.	PART NO.	DESCRIPTION	KEY NO.	PART NO.	DESCRIPTION
1	393362	Alternator Harness Assy. (Dual Circuit)	37	230932	+Screw - Nozzle
2	93621	Screw - Sem	38	230896	+Pin - Float Hinge
3	393456	Diode and Connector Assy.	39	391788	Carburetor Assembly (Inc. Key No's. 32, 33, 34, 35, 36, 37, 38, 39, 40, 41, 42, 43, 44, 45, 46, 49, 50, 51, 52, 53, 54, 55, 56, 57, 58, 59, 60 & 61)
4	393474	Stator - Alternator (Dual Circuit) (Inc. Key No. 3)			
5	391988	Flywheel and Ring Gear Assy. - Magneto (Inc. Key No. 7)	40	93499	Screw - Throttle & Choke Valve Mtg. Sem
6	392749	Motor - Starting (12 Volt)	41	391512	Shaft & Lever - Throttle
7	392134	Gear - Ring	42	222858	Valve - Throttle
8	93523	Screw - Sem	43	221995	Bowl - Float
9	392300	Cap - Fuel Tank	44	391787	Body Assembly - Carburetor (Inc. Key No. 57)
10	390225	Tank Assembly - Fuel (3 quart) (Inc. Key No. 9)	45	299707	Float - Carburetor
11	93803	Screw - Hex Head	46	270511	+Gasket - Float Bowl
12	390406	Strap Assy.-Fuel Tank (R.H.) (Inc. Key No's. 11, 13 & 14)	47	270872	*Gasket - Carburetor
13	90832	Washer - Lock - 1/4 x 3/32 x 5/64	48	93357	Screw - Carburetor
14	90970	Nut - Square 1/4 - 20	49	292681	+Valve Assembly - Carburetor Idle
15	222980	Bracket - Fuel Tank (R.H.)	50	299740	+Nozzle - Carburetor
16	93634	Screw - Sem	51	93043	Pin - Throttle Stop
17	93535	Screw - Sem (3/4" long)	52	91920	Screw - Machine - Fill. Hd. 8 - 32 x 5/8"
18	222979	Bracket - Fuel Tank (L.H.)	53	26157	Spring - Throttle Adjustment
19	22776	Washer - Flat	54	93499	Screw - Throttle & Choke Valve Mtg. Sem
20	390405	Strap Assy.-Fuel Tank (L.H.) (Inc. Key No's. 11, 13 & 14)	55	211712	Stop - Throttle
21	261274	Link - Choke	56	261116	Spring - Choke Return
22	390303	Connector - Fuel Pipe (Inc. Key No. 23)	57	221997	+Plug - Welch
23	293934	Valve - Fuel Shut-Off	58	211960	Venturi - Carburetor
24	23270	Screw - Choke Lever	59	390684	Shaft & Lever - Choke
25	26229	Spring - Choke Lever	60	222010	Valve Choke
26	220899	Washer - Choke Lever	61	270382	Washer - Choke Shaft
27	296004	Pipe - Fuel (Inc. Key No. 29)	62	93323	Screw - Air Cleaner
28	222175	Shield - Heat	63	270853	Gasket - Air Cleaner
29	93053	Clamp - Fuel Pipe	64	270843	Element - Air Cleaner
30	93572	Screw	65	93622	Screw - Air Cleaner
31	221428	Clamp (2)	66	391786	Cleaner Assembly - Air (Inc. Key No's. 64 & 67)
32	222311	Bracket - Carburetor	67	280118	Support - Air Cleaner Element
33	93572	Screw			
34	299096	+Valve - Fuel Inlet			+INCLUDED IN CARBURETOR OVERHAUL KIT PART NO. 299852
35	391233	+Valve - Needle			*INCLUDED IN GASKET SET - PART NO. 393411
36	222014	+Washer - Float Bowl			

REPAIR PARTS

ROPER 1036 LAWN TRACTOR--MODEL NUMBER L0262AR
ENGINE--MODEL NUMBER 220707, TYPE NUMBER 0147-01

CYLINDER, CRANKSHAFT AND ENGINE BASE GROUP

ALL ENGINE PARTS MUST BE PURCHASED THROUGH AND SERVICE PERFORMED BY YOUR LOCAL BRIGGS AND STRATTON DEALER.



**ROPER 1036 LAWN TRACTOR--MODEL NUMBER L0262AR
ENGINE--MODEL NUMBER 220707, TYPE NUMBER 0147-01**

CYLINDER, CRANKSHAFT AND ENGINE BASE GROUP

KEY NO.	PART NO.	DESCRIPTION	KEY NO.	PART NO.	DESCRIPTION
1	93572	Screw	54	212296	Gear - Cam
2	222971	Bracket - Fuel Tank Support	55	61760	Key - Flywheel
3	222309	Cover - Breaker Point	56	261501	Crankshaft
4	93014	Screw - Sem	57	221596	Retainer - Intake Valve
5	93226	Screw - Breaker Adjusting Sem	58	261183	Tappet - Valve
6	26018	Spring - Breaker Arm	59	65906	Spring - Intake Valve
7	391284	Breaker Ass'y.-Ignition (Inc. Key No. 6)	60	26828	Spring - Exhaust Valve
8	93042	Screw - Sem	61	261503	Valve - Exhaust
9	391792	Condenser	62	261462	Valve - Intake
10	65704	Plunger - Breaker Point	63	391784	Sump - Oil (Inc. Key No's. 52 & 53)
11	391086	Seal - Oil	64	391285	Piston Ass'y.-Standard (Inc. Key No's. 65 & 66)
12	393863	Cylinder Assembly (Inc. Key No. 11)	64	391287	Piston Ass'y.-.010 O.S.
13	261306	Spring - Governor	64	391288	Piston Ass'y.-.020 O.S.
14	390662	Plate - Gov. Control	64	391289	Piston Ass'y.-.030 O.S.
15	231039	Spacer - Control Bracket Mounting	65	260924	Lock - Piston Pin
16	93686	Screw - Control Bracket Mounting	66	391780	Ring Set - Piston - Standard
17	93496	Screw - Sem	66	391781	Ring Set - Piston - .010 O.S.
18	221535	Clamp - Casing	66	391782	Ring Set - Piston - .020 O.S.
19	222561	Cup - Screen Mounting	66	391783	Ring Set - Piston - .030 O.S.
20	93808	Screw - Sem	67	299691	Pin Assembly - Piston - Standard (Inc. Key No. 65)
21	222562	Screen - Flush Rotating	67	299691	Pin Assembly - Piston - .005 O.S.
22	92284	Nut - Hex	67	391286	Lock - Conn. Rod Screw
23	220865	Washer - Spring	68	222299	Screw - Conn. Rod
24	26157	Spring - Throttle Adjustment	69	92909	Rod Ass'y. Connecting (Inc. Key No's. 68 & 69)
25	91920	Screw - Machine, Fill. Hd. 8 - 32 x 5/8	70	393860	NOTE: For Connecting Rod with .020 undersize Crankpin - Order No. 393861
26	93735	Screw - Terminal			Elbow - Spark Plug
27	92791	Washer - Insulating	71	66538	*+Plug - Spark (Resistor Type)
28	66554	Collar - Insulating	72	293918	Screw - Cylinder Head (3" Long)
29	90576	Nut - Hex - 8 - 32 (2)	73	93723	+Head - Cylinder
30	391602	Wire - Ground	74	212366	Seat - Intake Valve (Standard)
31	66068	Washer - Insulating	75	261463	*Gasket - Cylinder Head
32	93572	Screw	76	271075	+Seat - Exhaust Valve
33	391733	Lever Ass'y.-Governor (1/4 Dia. Crank) (Inc. Key No's. 34 & 35)	77	211661	+Guide - Exhaust Valve
34	231082	Nut - Hex., 10 - 24	78	231218	*Gasket - Valve Cover
35	92613	Bolt - Governor Link	79	27803	Screw - Sem
36	222450	Washer - Gov. Crank (1/4 I.D.)	80	93394	Breather Assembly
37	93306	Cotter - Hairpin	81	391406	Tube - Breather
38	93307	Retainer - E-Ring	82	280100	Bushing - Gov. Crank (1/4 I.D.)
39	231058	Crank - Governor (1/4 Dia.)	83	231055	+Bushing - Plunger
40	261198	Link Governor	84	23513	Screw - Armature Mounting Sem
41	261197	Spring Governor	85	93381	Armature Assembly
42	391841	Cap and Dipstick	86	298968	Clip - Wire
43	270920	Seal - Oil Filter Cap	87	221907	Shield - Cylinder
44	93804	Screw - Clamp Mtg.	88	222744	Screw - Cylinder Shield Mtg. Sem
45	222502	Clamp - Oil Filter Tube	89	93163	Cover - Cylinder Head
46	392067	Fill Group-Oil (Inc. Key No's. 42, 43, 44, 45, 47 & 48)	90	222725	Wrench - Spark Plug
47	280134	Tube - Oil Filter	91	89838	Puller - Flywheel
48	68838	Seal - Filler Tube	92	19203	Screw - Blower Housing Mounting Sem
49	391764	Oil Slinger, Gov. Gear & Bracket Assembly	93	93158	Housing Blower
50	93585	Screw - Sump Mounting Sem	94	391556	Gasket Set
51	91084	Plug - Oil Drain	95	393411	Fuel Tank Support Bracket
52	291675	Seal - Oil	96	223157	Screw
53	270808	*Gasket - Crankcase Cover - 1/64 Thick	97	93294	Lockwasher
53	270915	*Gasket - Crankcase Cover - .005 Thick	98	90832	
53	270916	*Gasket - Crankcase Cover - .009 Thick			

+SPECIAL TOOLS REQUIRED TO INSTALL
*INCLUDED IN GASKET SET PART NO. 393411
*CANADIAN CUSTOMERS IN COMPLIANCE
WITH RADIO INTERFERENCE REGULATIONS
CERTIFIED MUST REPLACE SPARK PLUG
WITH RESISTOR SPARK PLUG ONLY.

TECUMSEH PRODUCTS COMPANY'S LIMITED WARRANTY FOR NEW PEERLESS GEAR POWER TRAIN COMPONENTS

A. Products Warranted

Peerless Gear and Machine Division of Tecumseh Products Company ("Tecumseh"), subject to the limitations contained below, will, at its option, repair or replace, without charge for parts or labor only, any part or parts of a new Power Train Component (which as used herein means and includes the transaxle, gear box, transmission, differential and right angle drives, and any part of the Power Train Component), EXCEPT any new Power Train Component incorporated in equipment used for commercial or rental purposes which is found upon examination by any Tecumseh Authorized Service Outlet or by Tecumseh's factory at Grafton, Wisconsin to be DEFECTIVE IN MATERIAL AND/OR WORKMANSHIP if received by Tecumseh or a Tecumseh Authorized Service Outlet for such examination within ONE YEAR from the date of sale to the original consumer purchaser. New Power Train Components incorporated in equipment used for commercial purposes are warranted in the same manner and to the same extent EXCEPT such Power Train Components are warranted for NINETY (90) DAYS ONLY, and must be received by Tecumseh or by a Tecumseh Authorized Service Outlet for such examination within 90 days from the date of sale to the original consumer purchaser. New Power Train Components incorporated in equipment used for rental purposes are warranted in the same manner and to the same extent EXCEPT such Power Train Components are warranted for THIRTY (30) DAYS ONLY, and must be received by Tecumseh or a Tecumseh Authorized Service Outlet within 30 days from the date of sale to the original consumer purchaser.

B. Products And Items Not Warranted

1. Alterations or Modifications of Power Train Components
All obligations under this warranty shall be terminated if the new Power Train Component is altered or modified in any way.
2. Accidents, Normal Maintenance, Failure to Follow Tecumseh's Instruction Manual
This warranty covers only parts of new Power Train Components which are found upon examination to be defective in material or workmanship as delivered to the original consumer purchaser. This warranty does not cover defects caused by depreciation or damage caused by normal wear, accidents, improper maintenance, improper use or abuse of the product, failure to follow the instructions contained in an Instruction Manual for the operation of the Power Train Component and parts. The cost of normal maintenance and replacement of service items which are not defective, shall be paid for by the original consumer purchaser.

C. Securing Warranty Service

Warranty service can be arranged for by contacting either a Tecumseh Authorized Service Outlet (which includes a Tecumseh Registered Service Dealer; a Tecumseh Authorized Service Distributor; and a Tecumseh Central Warehouse Distributor) or by contacting Tecumseh, c/o Director of Servicing, Lauson Power Products Parts Depot, 900 North Street, Grafton, Wisconsin 53024. Warranty service can only be performed by a Tecumseh Authorized Service Outlet or by Tecumseh at its factory in Grafton, Wisconsin. At the time of requesting warranty service, evidence must be presented of the date of sale to the original consumer purchaser. The purchaser shall pay any charges for making service calls and/or for transporting the product to and from the place where the inspection and/or warranty work is performed. The purchaser shall be responsible for any damage or loss incurred in connection with the transportation of Power Train Components and/or of part or parts of the Power Train Components submitted for inspection and/or warranty work.

D. No Additional Warranties or Representations

The foregoing EXPRESSED WARRANTY IS IN LIEU OF ALL OTHER EXPRESS WARRANTIES. Neither Tecumseh nor any of its affiliates makes any warranties, representations or promises, written or verbal, as to the quality of the Power Train Component or its part or parts other than those set forth herein.

ANY IMPLIED WARRANTY OF MERCHANTABILITY OR FITNESS FOR A PARTICULAR PURPOSE, TO THE EXTENT EITHER APPLIES TO PART OR PARTS OF POWER TRAIN COMPONENTS SHALL BE LIMITED IN DURATION TO THE PERIODS OF THE EXPRESSED WARRANTIES AS DEFINED IN PARAGRAPH A. Some states do not allow limitations on how long an implied warranty lasts, so the above limitation may not apply.

E. Damages

IN NO EVENT WILL TECUMSEH BE LIABLE FOR ANY INCIDENTAL, CONSEQUENTIAL OR SPECIAL DAMAGES AND/OR EXPENSES. Some states do not allow the exclusion or limitation of incidental or consequential damages, so the above limitation may not apply to you. This warranty gives you specific legal rights and you may have other legal rights which vary from state to state.

F. No Dealer Warranty

Tecumseh neither assumes nor authorizes any other person, natural or corporate, to assume for Tecumseh any other obligations or liabilities in connection with or with respect to any part or parts of a Power Train Component. The seller or dealer of part or parts of a Power Train Component has no authority to make any representations or promises on behalf of Tecumseh or to modify the terms or limitations of Tecumseh's warranty in any way. The seller or dealer makes no warranty of his own on any item not warranted by Tecumseh and makes no warranty on other items unless such seller or dealer delivers to the purchaser a separate written warranty document in which the seller or the dealer individually and specifically, on its own behalf, warrants the item.



TECUMSEH PRODUCTS COMPANY
PEERLESS GEAR & MACHINE DIVISION, Clinton, Michigan

For Service or Service Parts, contact any of our Tecumseh Authorized Service Dealers. You will find our dealers listed in the Yellow Pages of your telephone book under "Engines, Gasoline". If you have any difficulty at all, contact us.



Parts Depot Division
Tecumseh Products Company
Grafton, WI 53024
Telephone: 414/377-2700