

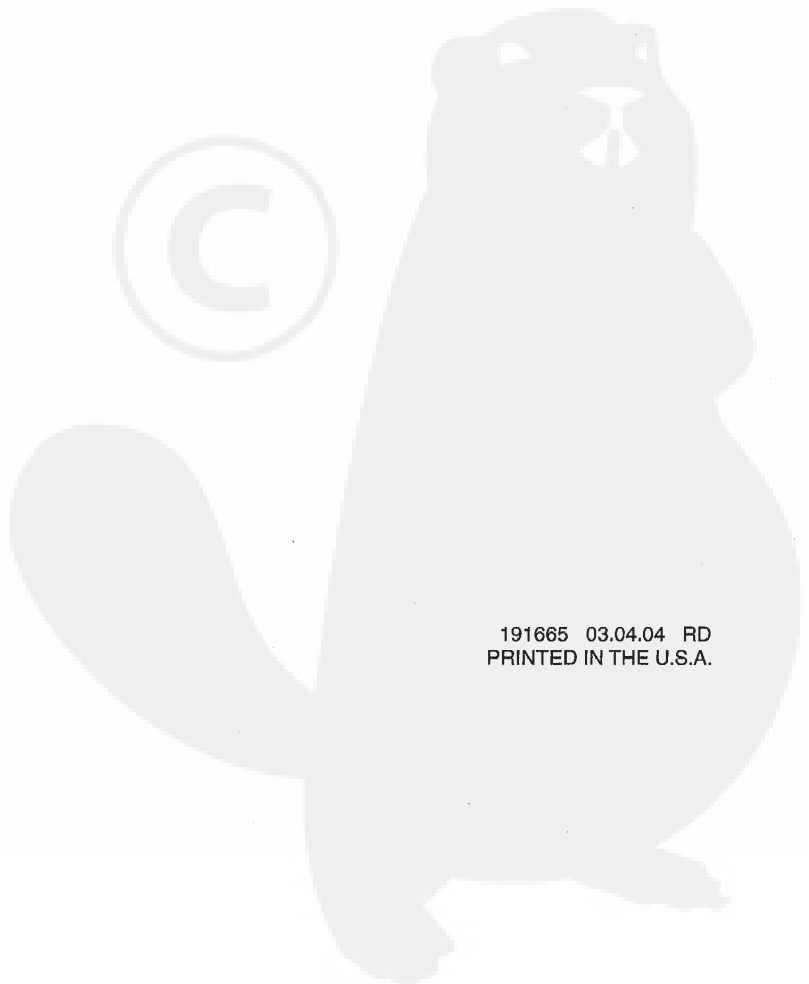
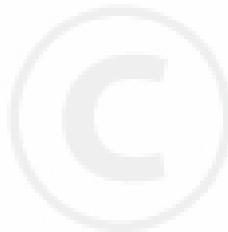
ILLUSTRATED PARTS BREAKDOWN

PARTNER

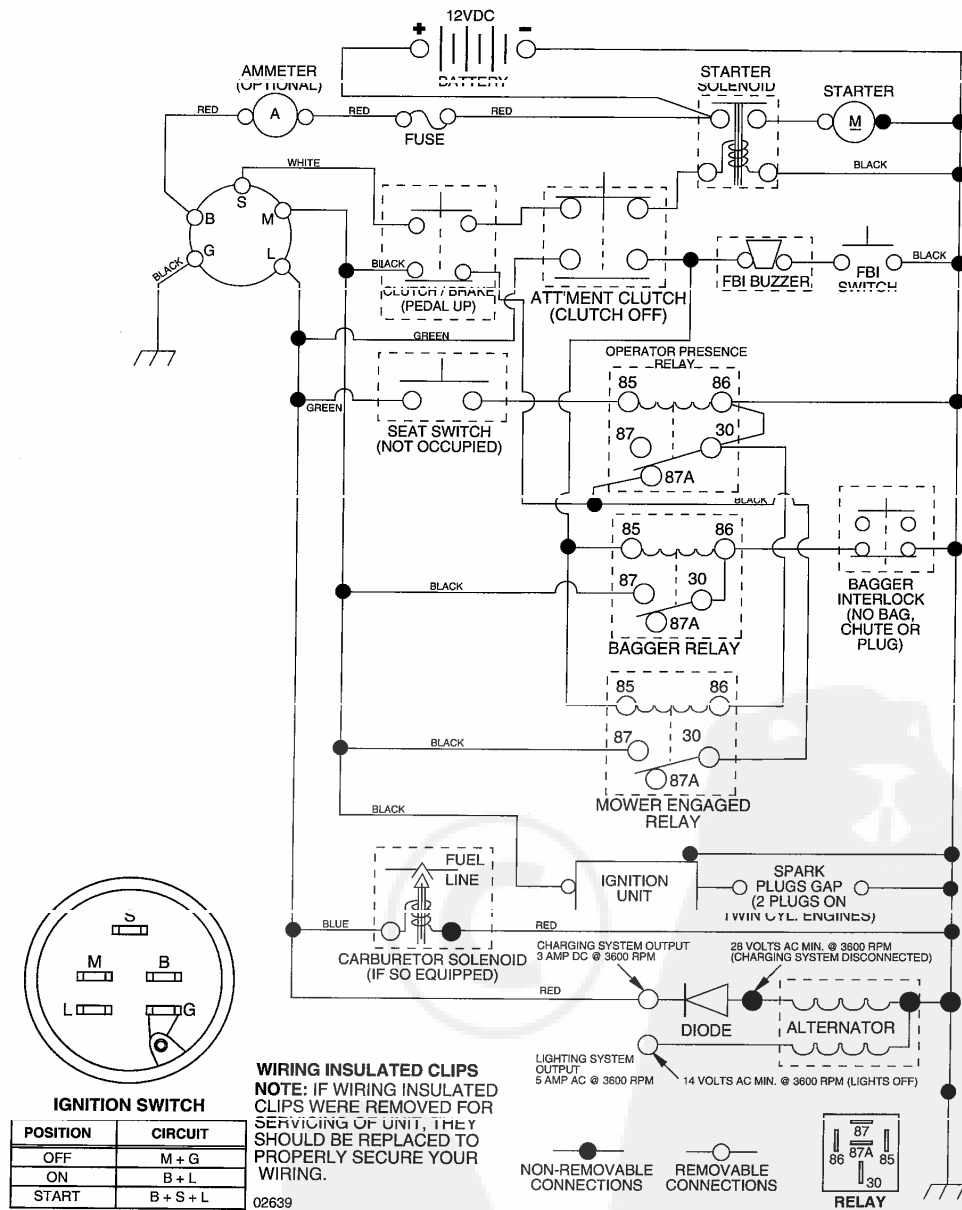
14.5 HP LAWN TRACTOR

MODEL NO. P145H107RB (P145H107RBC)

964 77 20-01

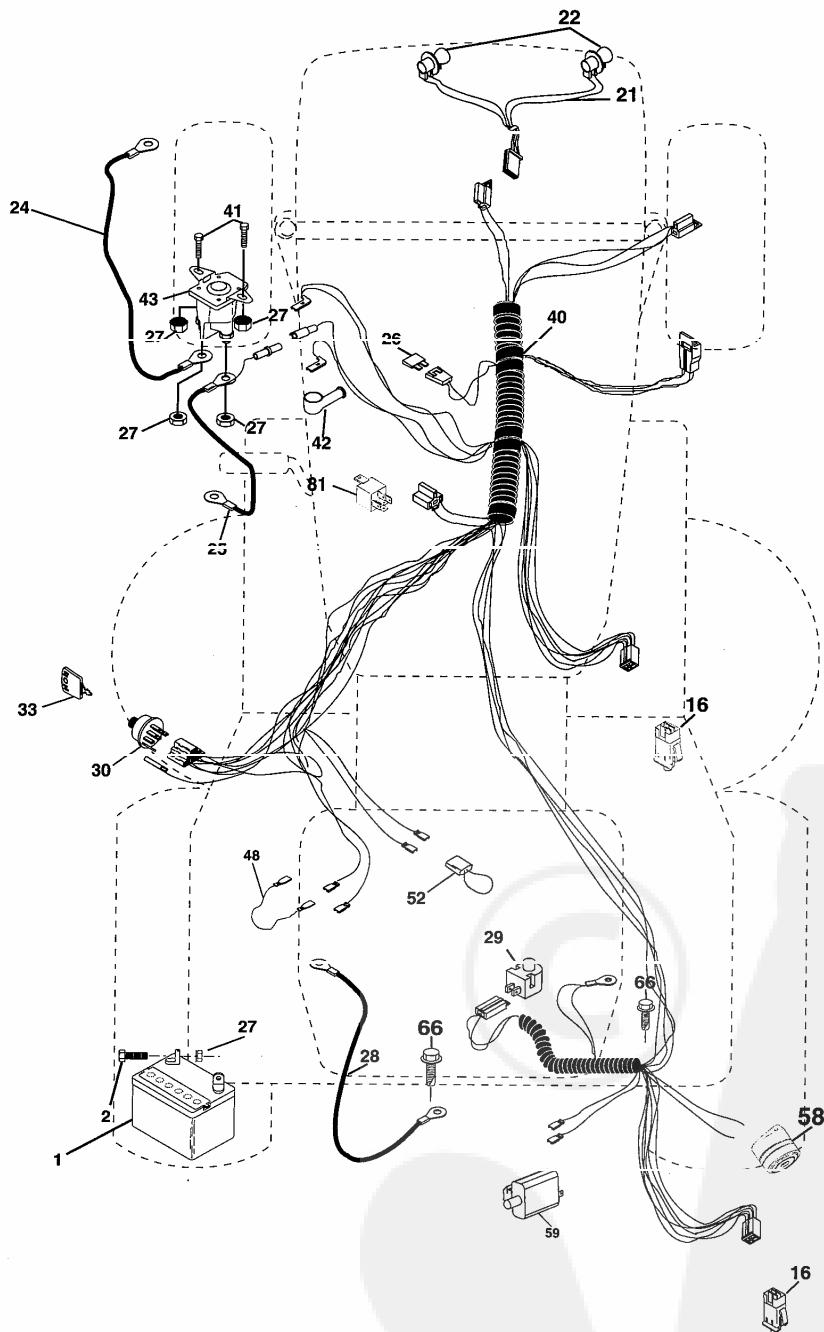


**TRACTOR- -MODEL NO. P145H107RB (P145H107RBC), PRODUCT 964 77 20-01
SCHEMATIC**



REPAIR PARTS

TRACTOR- -MODEL NO. P145H107RB (P145H107RBC), PRODUCT 964 77 20-01
ELECTRICAL

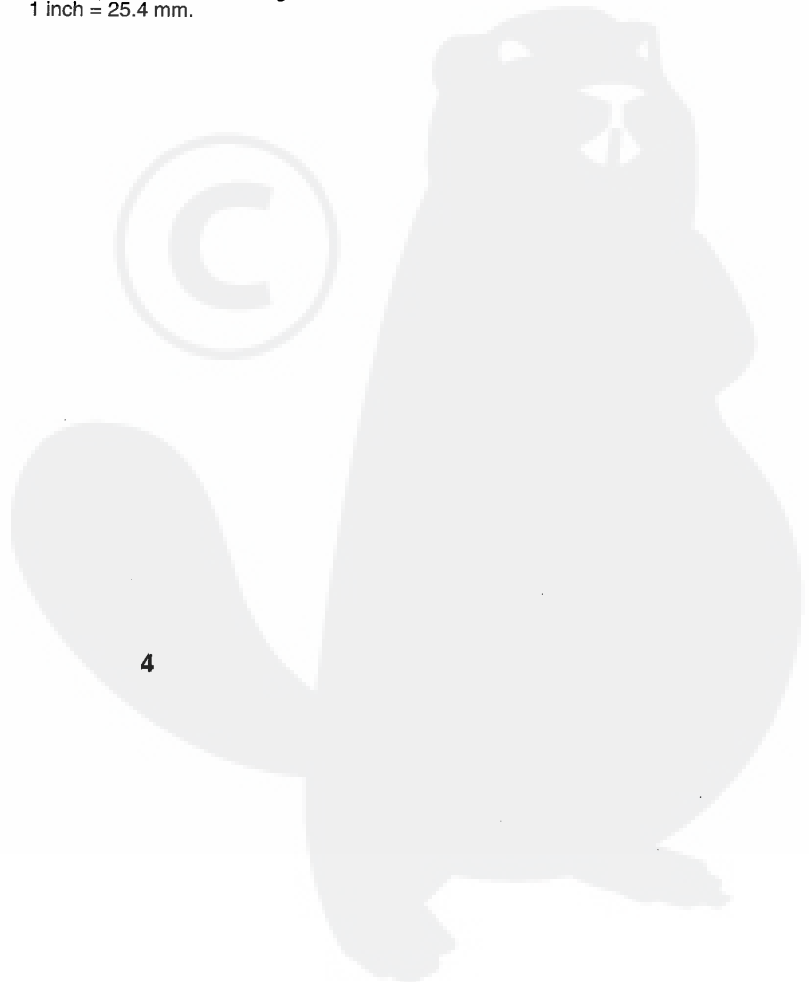
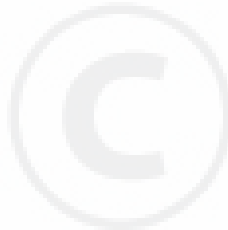


REPAIR PARTS

TRACTOR- -MODEL NO. P145H107RB (P145H107RBC), PRODUCT 964 77 20-01
ELECTRICAL

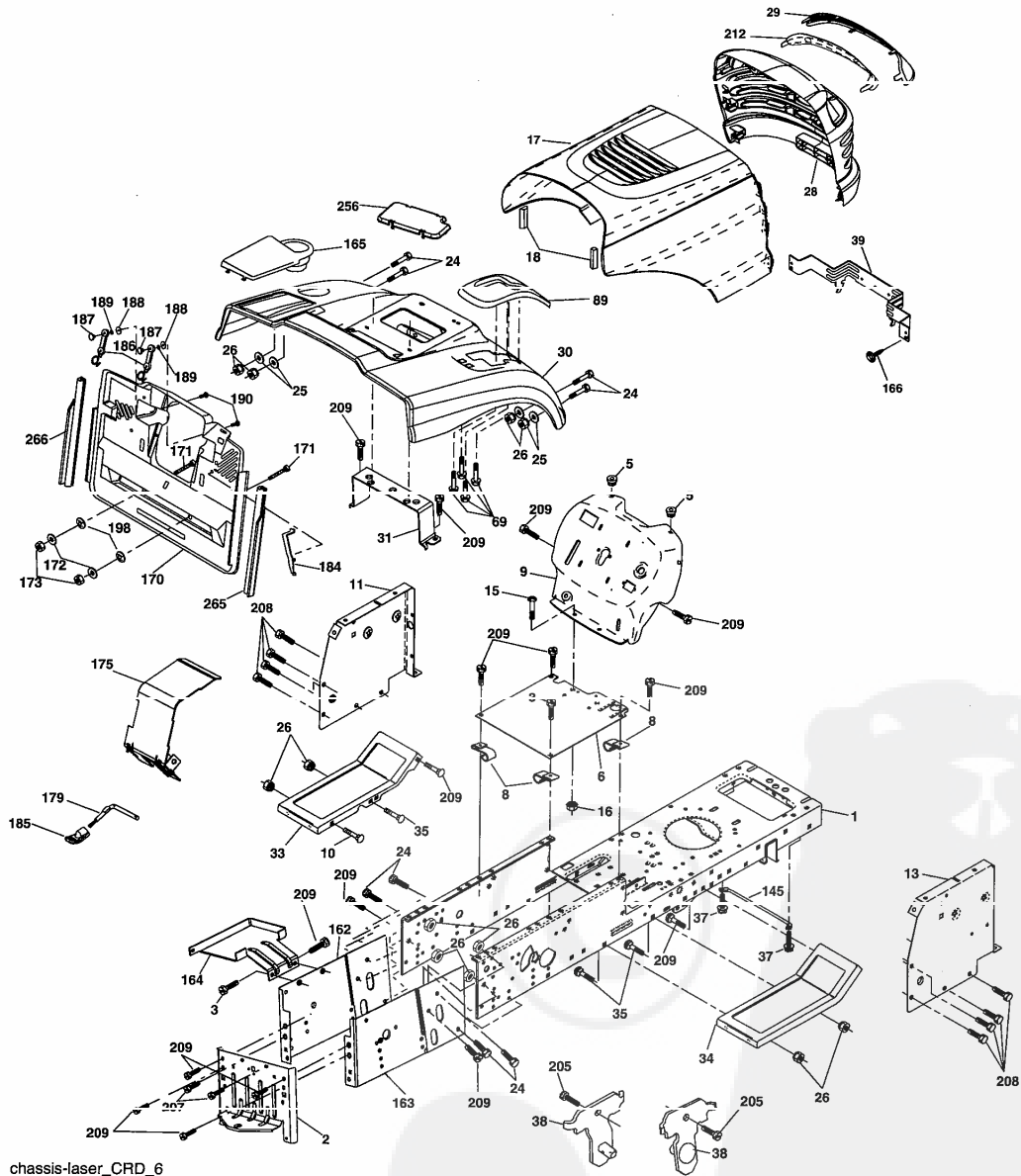
| KEY NO. | PART NO. | DESCRIPTION |
|---------|--------------|-----------------------------------|
| 1 | 532 16 34-65 | Battery |
| 2 | 874 76 04-12 | Bolt Hex Hd 1/4-20 unc x 3/4 |
| 16 | 532 17 61-38 | Switch Interlock |
| 21 | 532 17 56-88 | Harness Asm Light W/4152J |
| 22 | 532 00 41-52 | Bulb Light #1156 |
| 24 | 532 12 47-80 | Cable Starter 6 Ga. 11" Red |
| 25 | 532 16 59-87 | Cable Battery Crd 56" Red |
| 26 | 532 17 51-58 | Fuse |
| 27 | 873 51 04-00 | Nut Keps Hex 1/4-20 unc |
| 28 | 532 12 77-25 | Cable Ground 6 Ga. 18" Black |
| 29 | 532 12 13-05 | Switch Plunger Normal NC Gray |
| 30 | 532 17 55-66 | Switch Ignition |
| 33 | 532 14 04-01 | Key Ign Molded Indak |
| 40 | 532 18 80-36 | Harness Ign |
| 41 | 871 11 04-08 | Bolt Flk Fin Hex 1/4-20 unc x 1/2 |
| 42 | 532 13 15-63 | Cover Terminal Red |
| 43 | 532 17 88-61 | Solenoid |
| 48 | 532 14 08-44 | Adapter Ammeter Rectangular |
| 52 | 532 14 19-40 | Protection Wire Loop |
| 58 | 532 16 94-19 | Buzzer Crd |
| 59 | 532 18 03-79 | Switch FBI CRD |
| 66 | 817 49 06-08 | Screw Thdrol 3/8-16 x 1/2 Ty-Tt |
| 81 | 532 10 97-48 | Relay Asm |

NOTE: All component dimensions given in U.S. inches.
1 inch = 25.4 mm.



REPAIR PARTS

TRACTOR- -MODEL NO. P145H107RB (P145H107RBC), PRODUCT 964 77 20-01
CHASSIS AND ENCLOSURES



chassis-laser_CRD_6

REPAIR PARTS

TRACTOR- -MODEL NO. P145H107RB (P145H107RBC), PRODUCT 964 77 20-01 CHASSIS AND ENCLOSURES

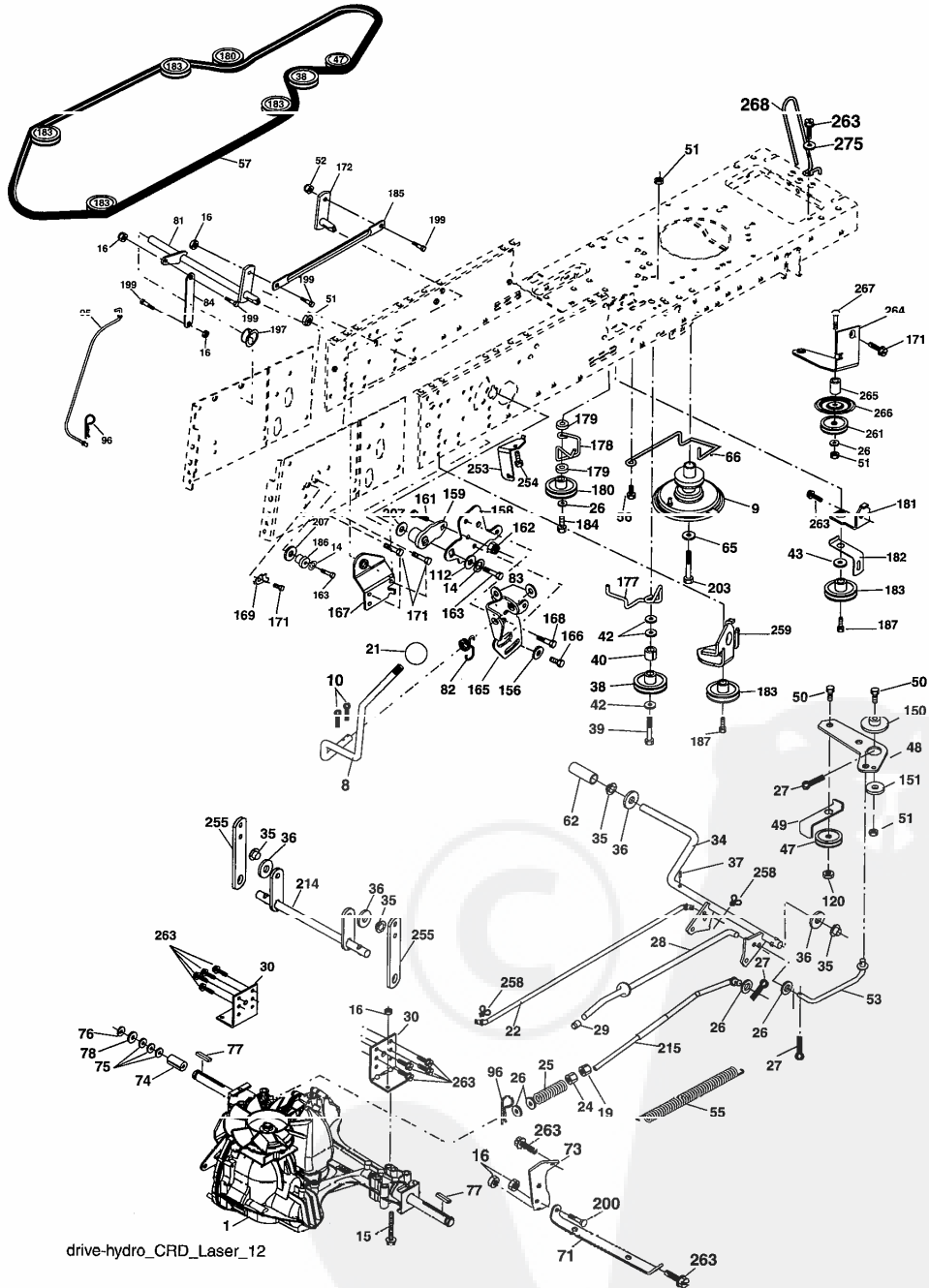
| KEY NO. | FART NO. | DESCRIPTION |
|---------|--------------|---|
| 1 | 532 17 46-20 | Chassis |
| 2 | 532 18 03-84 | Drawbar |
| 3 | 817 06 06-12 | Screw 3/8-16 x .75 |
| 5 | 532 15 52-72 | Bumper Hood/Dash |
| 6 | 532 18 44-19 | Saddle |
| 8 | 532 12 64-71 | Clip Insulator 13/32 Mtg. Hole |
| 9 | 532 19 06-94 | Dash |
| 10 | 872 14 06-08 | Bolt, Carriage 3/8-16 x 3/4 |
| 11 | 532 17 49-96 | Panel, Dash, L.H. |
| 13 | 532 18 17-19 | Panel, Asm. Dash R.H. |
| 15 | 874 18 05-12 | Screw, Machine, Truss Head 5/16-18 UNC x 3/4 |
| 16 | 873 51 05-00 | Nut |
| 17 | 532 18 29-07 | Hood Assembly |
| 18 | 532 18 49-21 | Bumper Hood |
| 24 | 874 78 06-16 | Bolt |
| 25 | 819 13 13-12 | Washer 13/32 x 13/16 x 12 Gauge |
| 26 | 873 50 06 00 | Nut |
| 28 | 532 17 97-49 | Grille Lens Asm |
| 29 | 532 18 27-18 | Lens |
| 30 | 532 18 13-86 | Fender |
| 31 | 532 16 51-56 | Bracket, Fender Support |
| 33 | 532 18 25-07 | Footrest, L.H. |
| 34 | 532 18 25-08 | Footrest, R.H. |
| 35 | 872 11 06-06 | Bolt |
| 37 | 817 49 05-08 | Screw Thdrol 5/16-18 x 1/2 TYT |
| 38 | 532 18 17-48 | Bracket Asm Pivot Mower Rear |
| 39 | 532 17 47-14 | Bracket Pivot Laser |
| 69 | 532 14 24-32 | Screw Hex 1/4-1/2 |
| 89 | 532 18 13-60 | Console |
| 145 | 532 15 65-24 | Rod Pivot Chassis/Hood |

| KEY NO. | FART NO. | DESCRIPTION |
|---------|--------------|------------------------------------|
| 162 | 532 18 03-82 | Bracket Exten Chassis Lh CRD |
| 163 | 532 18 03-83 | Bracket Exten Chassis Rh CRD |
| 164 | 532 16 56-05 | Support Battery CRD |
| 165 | 532 18 13-56 | Cover Battery CRD Lt |
| 166 | 532 17 18-75 | Screw HWHD Hi-Low #13-16 x 3/4 |
| 170 | 532 17 88-62 | Backplate Asm CRD |
| 171 | 872 14 06-20 | Bolt Rdhd Sqnk 3/8-16 x 2-1/2 Ga.5 |
| 172 | 819 13 20-16 | Washer 13/32 x 1-1/4 x 16 Ga. |
| 173 | 873 51 06-00 | Nut, Keps Hex 3/8-16 unc |
| 175 | 532 18 82-03 | Trap Door CRD |
| 179 | 532 18 03-79 | Rod Pivot FBI CRD |
| 184 | 532 17 46-62 | Bracket Actuator Bagger CRD |
| 185 | 532 18 11-01 | Knob Rod |
| 186 | 532 16 07-93 | Latch Asm Multch Bagger |
| 187 | 532 12 50-04 | Nut Weld .327/.304 #10-24 |
| 188 | 819 06 12-16 | Washer #10 |
| 189 | 810 07 10-00 | Washer Lock #10 |
| 190 | 871 08 10-10 | Screw Pan Hd Phillips 10-24 x 5/8 |
| 198 | 532 16 89-37 | Nut Push |
| 205 | 817 49 06-08 | Screw 3/8-16 x 1/2 |
| 207 | 817 06 05-08 | Screw 5/16-18 x 1/2 |
| 208 | 817 67 06-08 | Screw Thdrol 3/8-16 x 1/2 |
| 209 | 817 00 06-12 | Screw Hex Wsh Thdrol 3/8-16 x 3/4 |
| 212 | 532 17 51-43 | Insert Lens Reflective |
| 256 | 532 18 13-61 | Cover Fender Rack CRD |
| 265 | 532 18 57-04 | Seal Side RH Bagger |
| 266 | 532 18 57-03 | Seal Side LH Bagger |
| -- | 532 00 54-79 | Plug, Button |

NOTE: All component dimensions given in U.S. inches.
1 inch = 25.4 mm.

REPAIR PARTS

TRACTOR- -MODEL NO. P145H107RB (P145H107RBC), PRODUCT 964 77 20-01
DRIVE



drive-hydro_CRD_Laser_12

REPAIR PARTS

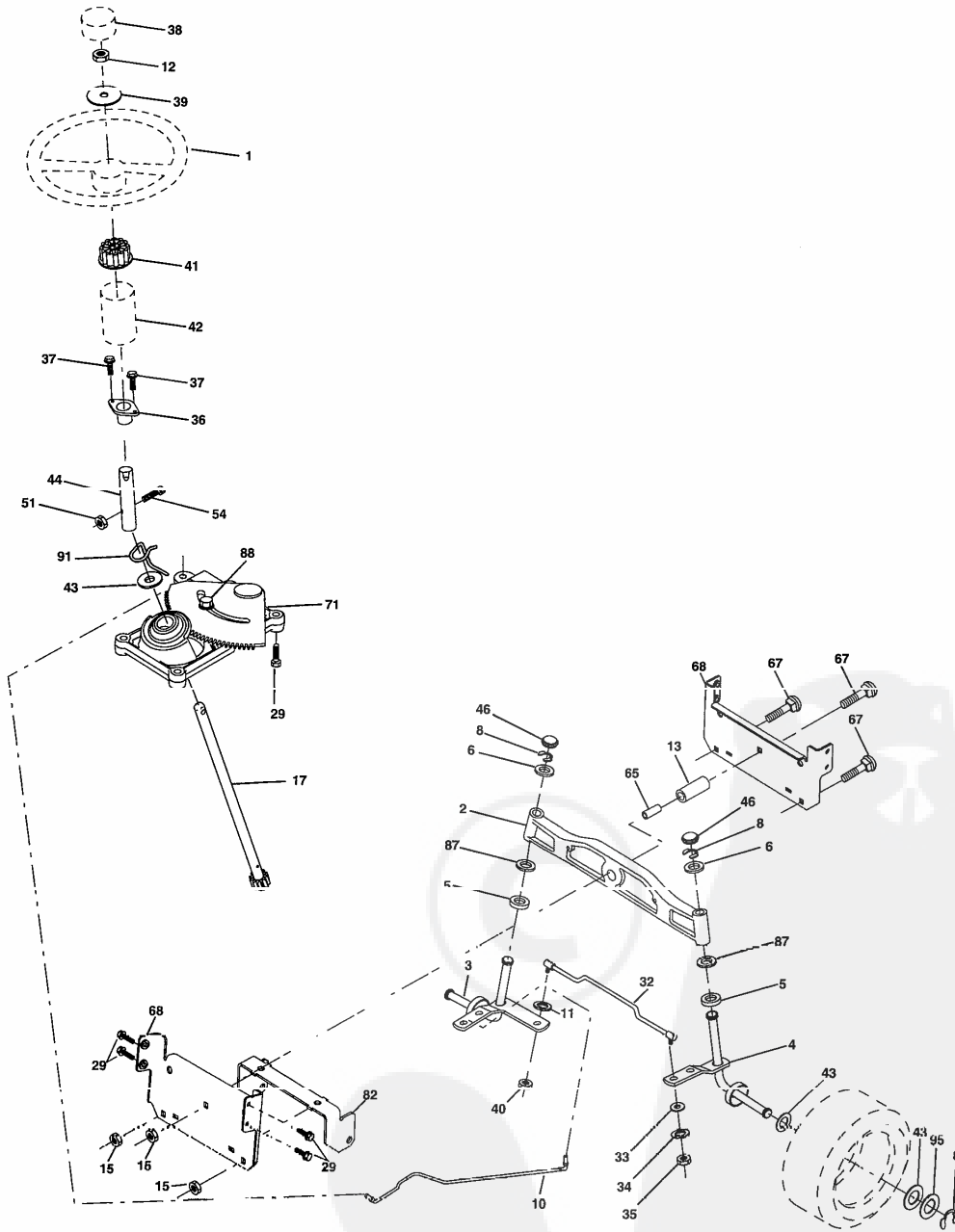
TRACTOR- -MODEL NO. P145H107RB (P145H107RBC), PRODUCT 964 77 20-01 DRIVE

| KEY NO. | PART NO. | DESCRIPTION | KEY NO. | PART NO. | DESCRIPTION |
|---------|--------------|--|---------|--------------|------------------------------------|
| 1 | ----- | Transaxle Hydro Gear 321 0510 (Order parts from transaxle manufacturer) | 98 | 532 12 47 98 | Spring, Retainer 1" |
| 8 | 532 16 56-19 | Rod, Shift Fender Adjust Lt | 112 | 819 09 12-10 | Washer 9/32 x 3/4 x 10 Ga. |
| 9 | 532 18 03-54 | Clutch Noram | 120 | 873 90 06-00 | Nut Lock Flg. 3/8-16 unc |
| 10 | 876 02 04-16 | Pin, Cotter 1/8 x 1 | 150 | 532 16 58-50 | Bushing, Bellcrank Grnd Dr |
| 14 | 810 04 04-00 | Washer, Lock Hvy Helical | 151 | 819 13 32-10 | Washer 13/32 x 2 x 10 Ga. |
| 15 | 874 49 05-44 | Bolt Hex FGHD 5/16-18 x Gr. 5 | 156 | 532 16 60-02 | Washer Srrted 5/16ID x 1.125 |
| 16 | 873 80 05-00 | Nut, Lock Hex w/Ins 5/16-18 unc | 158 | 532 16 55-89 | Bracket Shift Mount |
| 19 | 873 80 06-00 | Nut Lock Hex w/Ins 3/8-16 unc | 159 | 532 18 39-00 | Hub Tapered Flange Shift Lt |
| 21 | 532 10 69-33 | Knob | 160 | 532 16 98-45 | Washer Nylon |
| 22 | 532 17 56-07 | Rod, Brake | 161 | 872 14 04-06 | Bolt Rdhd Sqnk 1/4-20 x 3/4 Gr 5 |
| 24 | 873 35 06-00 | Nut | 162 | 873 68 04-00 | Nut Crownlock 1/4-20 unc |
| 25 | 532 10 68-88 | Spring, Rod, Brake | 163 | 874 78 04-16 | Bolt Hex Fin 1/4-20 unc x 1 Gr 5 |
| 26 | 819 13 13-16 | Washer 13/32 x 13/16 x 16 Ga. | 165 | 532 16 56-23 | Bracket Pivot Lever |
| 27 | 876 02 04-12 | Pin, Cotter 1/8 x 3/4 | 166 | 817 49 05-10 | Screw 5/16-18 x 5/8 |
| 28 | 532 17 57-65 | Rod, Parking Brake | 167 | 532 16 55-88 | Bracket Support Shift CRD |
| 29 | 532 07 16-73 | Cap, Parking Brake | 168 | 532 16 54-92 | Bolt Shoulder 5/16-18 x .561 |
| 30 | 532 16 95-92 | Bracket, Mfg. Transaxle | 169 | 532 16 55-80 | Plate Fastening Lt |
| 34 | 532 17 55-78 | Shaft, Asm Pedal Foot CRD | 171 | 817 49 06-08 | Screw Thdrol 3/8-16 x 1/2 Ty-Tt |
| 35 | 532 12 01-83 | Bearing, Nylon | 172 | 532 17 02-71 | Shaft Asm Shifter Frt CRD |
| 36 | 819 21 16-16 | Washer 21/32 x 1 x 16 Ga. | 177 | 532 16 59-32 | Keeper Flat Idler 3.06" CRD |
| 37 | 532 12 49-63 | Pin, Roll 3/16 x 1" | 178 | 532 16 59-33 | Keeper Belt Idler 1.88" CRD |
| 38 | 532 16 59-36 | Pulley Flat Composite 3.06" | 179 | 532 12 09-58 | Washer Sintered |
| 39 | 874 76 06-44 | Bolt Fin Hex 3/8-16 unc x 2-3/4 | 180 | 532 16 56-30 | Pulley, Idler, Flat 1.88"CRD |
| 40 | 532 12 49-65 | Spacer, Split 395 x 59 Bzp | 181 | 532 18 02-11 | Bracket Idler Ground Drive CRD |
| 42 | 819 13 13-12 | Washer 13/32 x 13/16 x 12 Ga. | 182 | 532 18 26-82 | Keeper Belt 2.5" Od V-Idler CRD |
| 43 | 819 11 10-12 | Washer 11/32 x 5/8 x 12 Ga. | 183 | 532 18 60-07 | Pulley V-Idler 2.50" Od CRD |
| 47 | 532 12 77-83 | Pulley, Idler, V Groove Plasic | 184 | 817 49 06-44 | Screw Hexwsh Thdrol 3/8-16 x 2-3/4 |
| 48 | 532 15 44-07 | Bellcrank Clutch Grnd Drv | 185 | 532 17 00-08 | Link Shift |
| 49 | 532 12 32-05 | Retainer, Belt Style Spring | 186 | 532 16 56-14 | Hub Tapered Round CRD |
| 50 | 872 11 06-12 | Bolt Carr Sh 3/8-16 x 1-1/2 Gr. 5 | 187 | 817 58 05-20 | Screw Thdrol 5/16-18 x 1.25 |
| 51 | 873 68 06-00 | Nut, Crownlock 3/8-16 unc | 197 | 532 16 96-13 | Nyliner Snap-In 5/8 |
| 52 | 873 68 05-00 | Nut Crownlock 5/16-18 | 199 | 532 16 96-12 | Bolt Shoulder 5/16-18 unc |
| 53 | 532 10 57-10 | Link, Clutch 7.66 | 200 | 872 14 05-08 | Bolt RDHD SQNK 5/16-18 x 1 |
| 55 | 532 10 57-09 | Spring, Return, Clutch | 203 | 871 17 07-80 | Bolt Hex 7/16-20 x 5 |
| 56 | 817 06 06-20 | Screw 3/8-16 x 1-1/4 | 207 | 532 16 98-45 | Washer Nylon Rear |
| 57 | 532 17 01-40 | V-Belt Kev 112" 0650 CRD | 214 | 532 17 56-09 | Shaft Asm. Brake |
| 62 | 532 12 48-72 | Cover, Pedal | 215 | 532 17 56-52 | Rod Brake Hydro |
| 65 | 810 04 07 00 | Washer | 253 | 532 17 50-28 | Bracket Cable Chassis |
| 66 | 532 15 47-78 | Keeper, Belt Engine F-Proof | 254 | 817 00 06-16 | Screw 3/8-16 x 1 |
| 71 | 532 16 91-83 | Strap, Torque, Lh | 255 | 532 17 56-06 | Brake Shift Brake Mtg. |
| 73 | 532 16 91-82 | Strap, Torque, Rh | 258 | 532 17 80-62 | Clip Retainer |
| 74 | 532 13 70-57 | Spacer, Split | 259 | 532 18 02-12 | Bracket Pulley |
| 75 | 532 12 17-49 | Washer 25/32 x 1-1/4 x 16 Ga. | 261 | 532 13 14-94 | Pulley Idler |
| 76 | 812 00 00-01 | Ring, E | 263 | 817 00 06-12 | Screw Thdrol 3/8-16 x 3/4 |
| 77 | 532 12 35-83 | Key, Square | 264 | 532 18 19-95 | Bracket Clutch Mounting |
| 78 | 532 12 17-48 | Washer 25/32 x 1-5/8 x 16 Ga. | 265 | 532 18 20-13 | Spacer Idler Chassis |
| 81 | 532 17 00-06 | Asm, Shaft | 266 | 532 18 20-61 | Shield Idler |
| 82 | 532 16 57-11 | Spring, Torsion | 267 | 872 14 06-26 | Bolt RDHD SQNK 3/8-16unc x 3-1/4 |
| 83 | 819 17 12-16 | Washer 17/32 x 3/4 x 16 Ga. | 268 | 532 18 24-02 | Guard Muffler Rh |
| 84 | 532 17 00-07 | Link, Transaxle | 275 | 819 13 16-14 | Washer 13/32 x 1 x 14 Ga. |
| 95 | 532 17 00-15 | Control Asm Bypass Hydro | | | |

NOTE: All component dimensions given in U.S. inches
1 inch = 25.4 mm

REPAIR PARTS

TRACTOR- -MODEL NO. P145H107RB (P145H107RBC), PRODUCT 964 77 20-01
STEERING ASSEMBLY



steering_pl.it_29

REPAIR PARTS

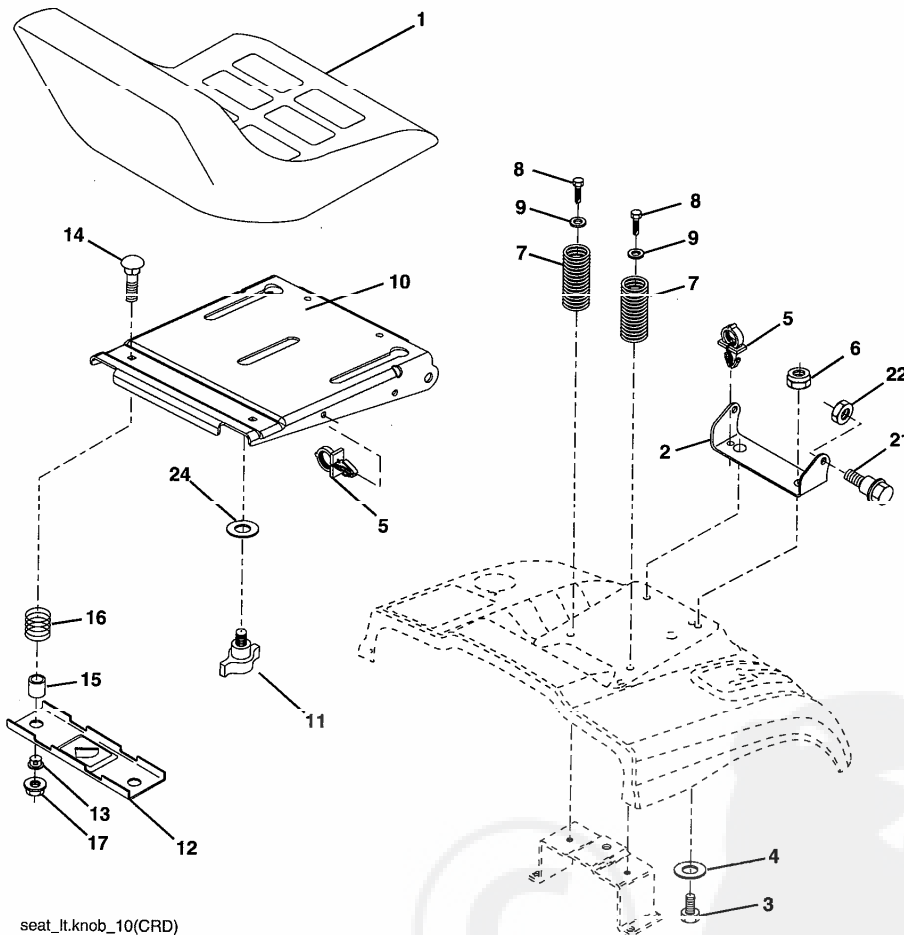
TRACTOR- -MODEL NO. P145H107RB (P145H107RBC), PRODUCT 964 77 20-01 STEERING ASSEMBLY

| KEY NO. | PART NO. | DESCRIPTION |
|------------|--------------|----------------------------------|
| 1 | 532 13 97-68 | Steering Wheel |
| 2 | 532 18 47-06 | Cast Iron Axle Assembly |
| 3 | 532 16 98-40 | Spindle Assembly, L.H. |
| 4 | 532 16 98-39 | Spindle Assembly, R.H. |
| 5 | 532 12 49-31 | Bearing, Race, Thrust, Hardened |
| 6 | 532 12 17-48 | Washer 25/32 x 1-5/8 x 16 Gauge |
| 8 | 812 00 00-29 | Ring, Klip |
| 10 | 532 17 51-21 | Link, Drag |
| 11 | 810 04 06-00 | Washer, Lock |
| 12 | 873 94 08-00 | Nut Hex Jam Toplock 1/2-20 unf |
| 13 | 532 13 65-18 | Spacer Brg Axle Front |
| 15 | 532 14 52-12 | Nut, Hexflange Lock |
| 17 | 532 18 06-41 | Shaft Assembly, Steering |
| 29 | 817 00 06-12 | Screw, 3/8-16 x 3/4 |
| 32 | 532 17 01-62 | Rod, Tie |
| 33 | 819 11 12-16 | Washer 11/32 x 3/4 x 16 Ga. |
| 34 | 810 04 05-00 | Washer Lock Hvy Hlcl Spr 5/16 |
| 35 | 873 54 05-00 | Nut Crownlock 5/16-24 unf |
| 36 | 532 15 50-99 | Bushing, Steering |
| 37 | 532 15 29-27 | Screw TT #10-32 x 5 x 3/8 Flange |
| 38 | 532 14 01-75 | Cap Wheel Steer |
| 39 | 819 18 38-12 | Washer 9/16 x 2-3/8 |
| 40 | 873 54 06-00 | Nut Crownlock 3/8-24 |
| 41 | 532 18 67-37 | Adaptor, Steering Wheel |
| 42 | 532 16 96-33 | Boot, Steering Dash P/L Mtl |
| 43 | 532 12 17-49 | Washer 25/32 x 1-1/4 x 16 Ga. |
| 44 | 532 18 06-40 | Extension Steering |
| 46 | 532 12 12-32 | Cap, Spindle |
| 51 | 873 54 04-00 | Nut Crownlock 1/4-28 |
| 54 | 871 13 04-20 | Bolt Hex 1/4-28unf x 1-1/4 Gr. 8 |
| 65 | 532 16 03-67 | Spacer Brace Axle |
| 67 | 872 11 06-18 | Bolt Rdhd Sq 3/8-16 unc x 2-1/4 |
| 71 | 532 17 51-46 | Steering Asm. |
| 68 | 532 16 98-27 | Brace Axle |
| 82 | 532 16 98-35 | Bracket Susp Chassis Front |
| 87 | 532 17 39-66 | Washer Flat .781 x 1-1/2 x .14 |
| 88 | 532 17 51-18 | Bolt Shoulder 7/16-20 unc |
| 91 | 532 17 55-53 | Clip Steering |
| 95 | 532 18 89-67 | Washer Harden .793 x 1.637 x 060 |

NOTE: All component dimensions given in U.S. inches.
1 inch = 25.4 mm.

REPAIR PARTS

TRACTOR - -MODEL NO. P145H107RB (P145H107RBC), PRODUCT 964 77 20-01
SEAT ASSEMBLY



seat_lt.knob_10(CRD)

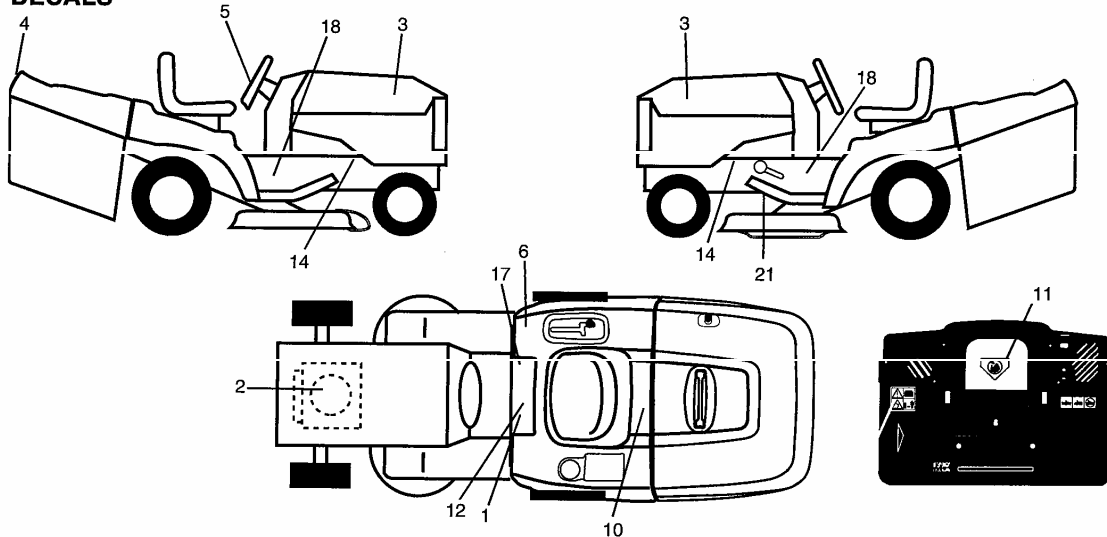
| KEY NO. | PART NO. | DESCRIPTION |
|---------|--------------|--------------------------------|
| 1 | 532 18 87-05 | Seat |
| 2 | 532 18 01-66 | Bracket Pnt Pivot Seat (blk) |
| 3 | 871 11 06-16 | Bolt Fin Hex 3/8-16 Unc x 1 |
| 4 | 819 13 16-10 | Washer Flat 13/32 x 1 x 10 Ga. |
| 5 | 532 14 50-06 | Clip Push in Hinged |
| 6 | 873 80 06-00 | Nut Lock Hex 3/8-16 Unc |
| 7 | 532 12 41-81 | Spring Seat Cprsn 2 250 Blk Zi |
| 8 | 817 00 06-16 | Screw 3/8-16 X 1-1/2 |
| 9 | 819 13 16-14 | Washer 13/32 X 1 X 14 Ga |
| 10 | 532 18 01-86 | Pan Pnt Seat (blk) |
| 11 | 532 16 63-69 | Knob Seat Adj Wingnut |
| 12 | 532 12 12-46 | Bracket Pnt Mounting Switch |

| KEY NO. | PART NO. | DESCRIPTION |
|---------|--------------|--------------------------------|
| 13 | 532 12 12-48 | Bushing Snap Blk Nyl 50 Id |
| 14 | 872 13 43-00 | Bolt Rdhd Sht Nk 1/4-20x1-1/2 |
| 15 | 532 13 43-00 | Spacer Split |
| 16 | 532 12 12-50 | Spring Cprsn |
| 17 | 532 12 39-76 | Nut Lock 1/4 Lge Flg Gr 5 Zinc |
| 21 | 532 17 18-52 | Bolt Shoulder 5/16-18 Unc-2A |
| 22 | 873 80 05-00 | Nut Hex Lock w/Ins 5/16-18 |
| 24 | 819 17 19-12 | Washer 17/32 X 1-3/16 X 12 Ga. |

NOTE: All component dimensions given in U.S. inches.
1 inch = 25.4 mm

REPAIR PARTS

TRACTOR- -MODEL NO. P145H107RB (P145H107RBC), PRODUCT 964 77 20-01
DECALS



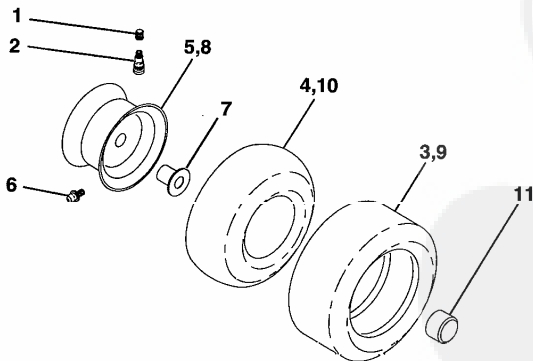
KEY PART

| NO. | PART NO. | DESCRIPTION |
|-----|--------------|-------------------------------|
| 1 | 532 14 54-98 | Decal Read Owner's Manual Sym |
| 2 | 532 18 47-67 | Decal Hp Engine |
| 3 | 532 18 56-46 | Decal Hood |
| 4 | 532 18 89-95 | Decal Fender |
| 5 | 532 18 56-47 | Decal Strg Wheel |
| 6 | 532 18 04-32 | Decal 100 DBA |
| 10 | 532 14 50-05 | Decal Bat Dan/Poi P/L Sym Wpn |
| 11 | 532 18 21-66 | Decal Mower Cut Finger Symbol |
| 12 | 532 15 97-37 | Decal Brake/Clutch Symbol Lt |
| 14 | 532 15 97-36 | Decal Chassis Hot Muffler |
| 17 | 532 14 08-37 | Decal Saddle Brake Parking |

KEY PART

| NO. | PART NO. | DESCRIPTION |
|-----|--------------|--------------------------|
| 18 | 532 18 56-51 | Decal Chas Turbo |
| 21 | 532 16 62-86 | Decal Hex Belt Sch |
| — | 532 16 69-60 | Decal Bypass Fender CRD |
| — | 532 13 83-11 | Decal Lift Handle |
| — | 532 18 10-90 | Pad Footrest RH |
| — | 532 18 01-91 | Pad Footrest LH |
| — | 532 18 04-35 | Decal Rear Plate |
| — | 532 18 26-21 | Decal Bagger Frame Asy |
| — | 532 18 52-06 | Manual Operator's (Euro) |
| — | 532 18 52-29 | Manual Operator's (Scan) |

WHEELS & TIRES



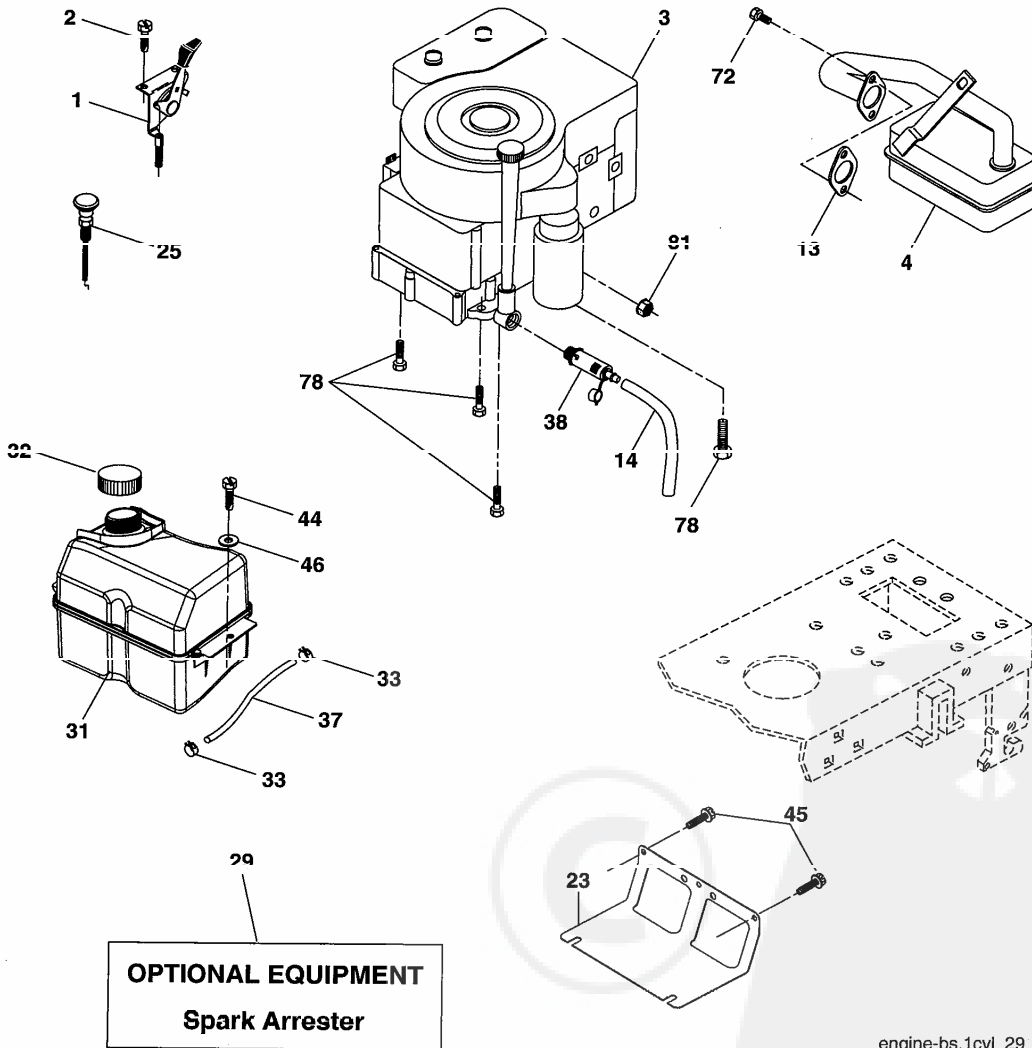
KEY PART

| NO. | PART NO. | DESCRIPTION |
|-----|--------------|--------------------------------|
| 1 | 532 05 91-92 | Cap Value Tire |
| 2 | 532 06 51-39 | Stem Value |
| 3 | 532 10 62-22 | Tire F Ts 15 X 6 0 - 6 Service |
| 4 | 532 05 99-04 | Tube Inner Front #35060 |
| 5 | 532 12 51-21 | Rim Asm 6"front Service |
| 6 | 532 12 49-57 | Fitting Grease |
| 7 | 532 12 49-59 | Bearing Flange |
| 8 | 532 12 51-22 | Rim Asm 8"rear Service |
| 9 | 532 12 20-82 | Tire R Ts 20 x 10-8 C Service |
| 10 | 532 12 49-26 | Tube Rear 9 5 X 8 Service |
| 11 | 532 17 50-39 | Cap Axle Blk 1 50 X 1 00 |
| -- | 532 14 43-34 | Sealant, Tire (10 oz. tube) |

NOTE: All component dimensions given in U.S. inches
1 inch = 25.4 mm

REPAIR PARTS

TRACTOR- -MODEL NO. P145H107RB (P145H107RBC), PRODUCT 964 77 20-01
ENGINE



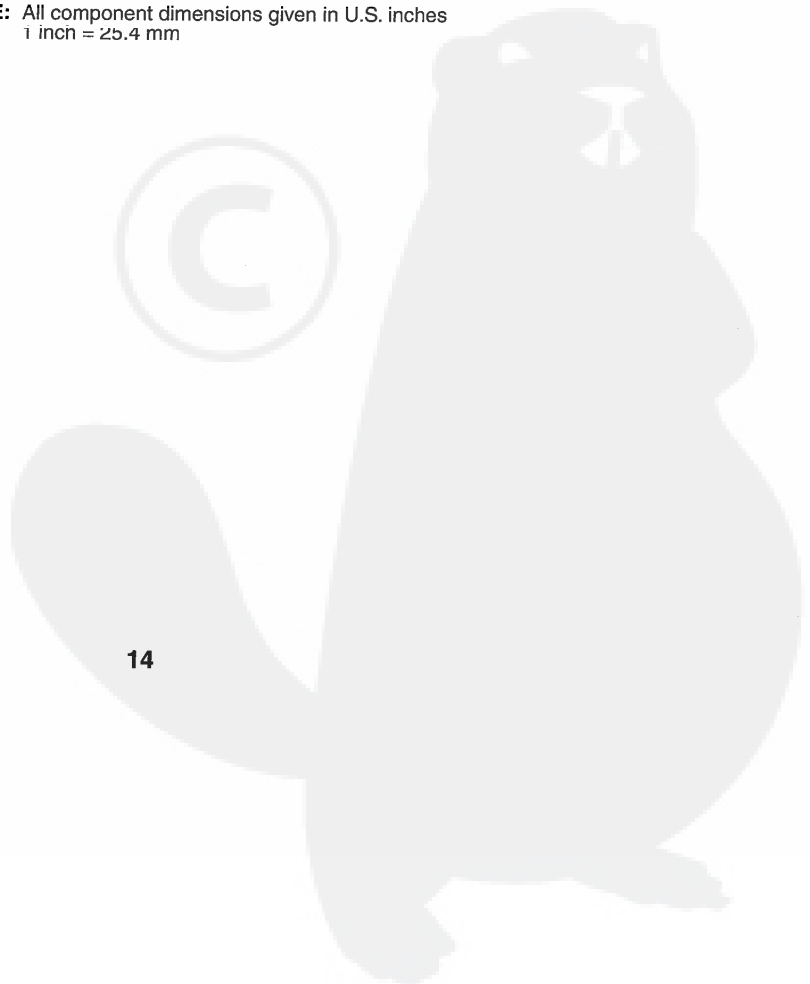
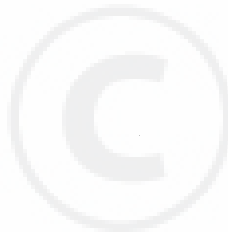
engine-bs.1cyl_29

REPAIR PARTS

TRACTOR- -MODEL NO. P145H107RB (P145H107RBC), PRODUCT 964 77 20-01
ENGINE

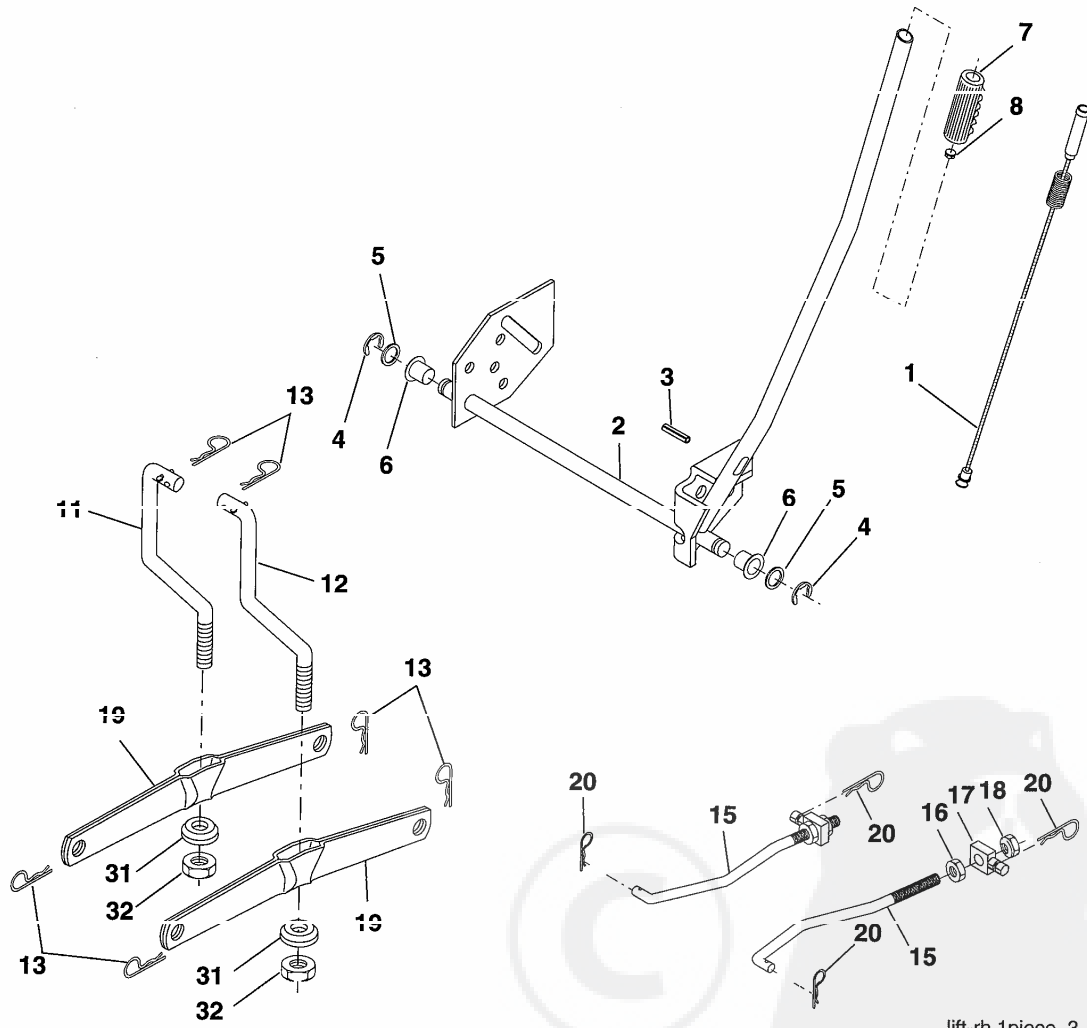
| KEY NO. | PART NO. | DESCRIPTION |
|---------|---------------------|---|
| 1 | 532 17 05-51 | Control Throt Flag |
| 2 | 817 72 04-08 | Screw Hex Thd Cut 1/4-20x1/2 |
| 3 | ----- | Engine B&S Model 282H07 (Order Parts from Engine Manufacturer) |
| 4 | 532 13 73-52 | Muffler Exhaust |
| 13 | 532 16 52-91 | Gasket Muttler |
| 14 | 532 14 84-56 | Tube Drain Oil Easy |
| 23 | 532 16 98-37 | Shield BRN/DBR Guard |
| 25 | 532 19 06-95 | Control Choke |
| 29 | 532 13 71-80 | Arrestor Spark |
| 31 | 532 18 55-34 | Tank Fuel Front 2.00 Gal. |
| 32 | 532 14 05-27 | Cap Fuel Asm Top Vent |
| 33 | 532 12 34-87 | Clamp Hose Blk |
| 37 | 532 13 70-40 | Line Fuel |
| 38 | 532 18 16-54 | Plug Drain Oil Easy |
| 44 | 817 67 04-12 | Screw Hexwsh Thdrol 1/4-20 x 3/4 |
| 45 | 817 00 06-12 | Screw 3/8-16 x 3/4 |
| 46 | 819 09 14-16 | Washer 9/32 X 7/8 X 16ga |
| 72 | 532 18 39-06 | Screw Socket Head 5/16-18 x 1 |
| 78 | 817 06 06-20 | Screw 3/8-16 x 1-1/4 |
| 81 | 873 51 04-00 | Nut Keps 1/4-20 UNC |

NOTE: All component dimensions given in U.S. inches
1 inch = 25.4 mm



REPAIR PARTS

TRACTOR- -MODEL NO. P145H107RB (P145H107RBC), PRODUCT 964 77 20-01
MOWER LIFT



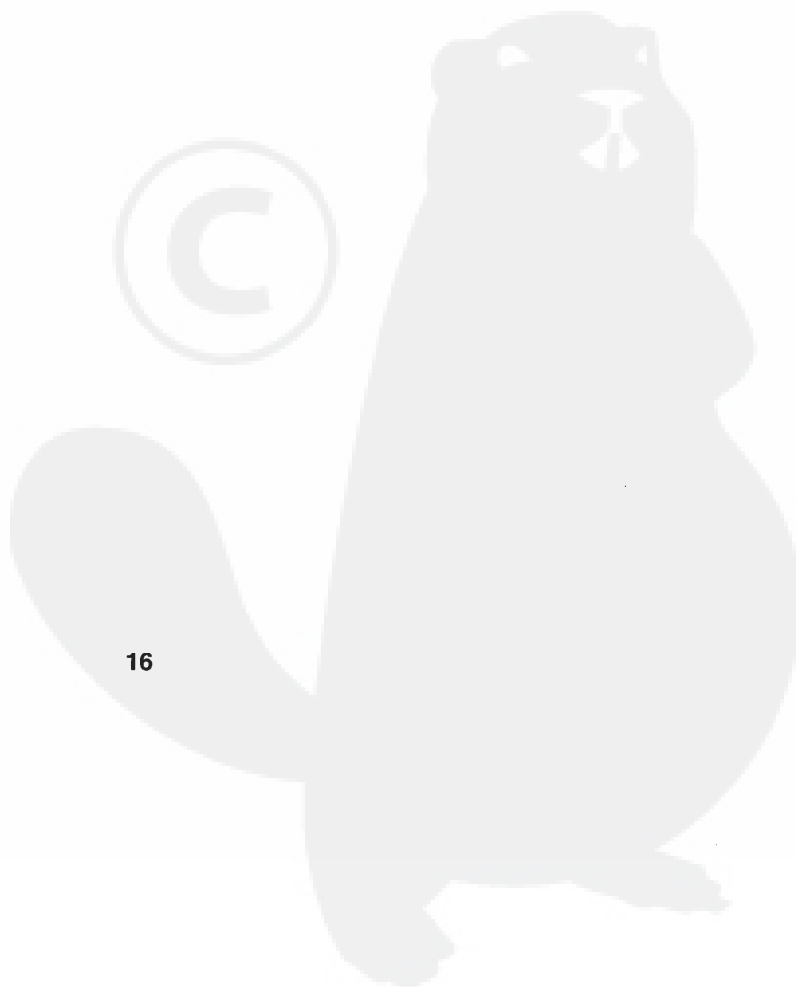
lift-rh.1piece_3

REPAIR PARTS

TRACTOR- -MODEL NO. P145H107RB (P145H107RBC), PRODUCT 964 77 20-01
MOWER LIFT

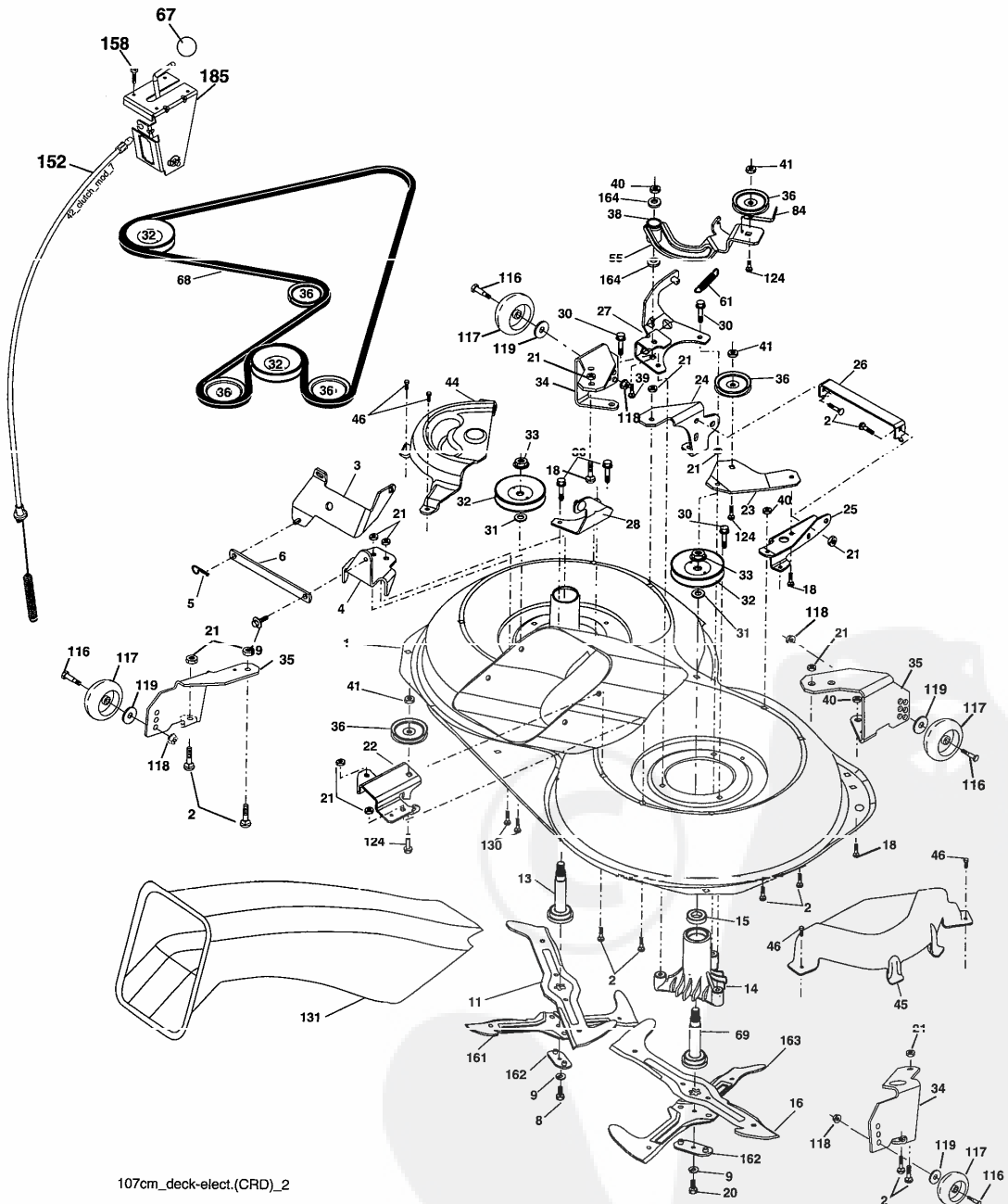
| KEY NO. | PART NO. | DESCRIPTION |
|---------|--------------|---------------------------------|
| 1 | 532 15 94-60 | Wire Asm Inner Spring W/Plunger |
| 2 | 532 15 94-71 | Shaft Asm. Lift |
| 3 | 532 10 57-67 | Pin Groove |
| 4 | 812 00 00-02 | E Ring #5133-62 |
| 5 | 819 21 16-21 | Washer 21/32 x 1 x 21 Ga. |
| 6 | 532 12 01-83 | Bearing Nylon |
| 7 | 532 10 94-13 | Grip Handle Bicycle |
| 8 | 532 12 45-26 | Button Plunger Black |
| 11 | 532 16 58-29 | Link Asm Lift L.H. |
| 12 | 532 16 58-31 | Link Asm Lift R.H. |
| 13 | 532 12 46-70 | Retainer Spring |
| 15 | 532 17 32-88 | Link Front |
| 17 | 532 17 56-89 | Trunnion |
| 18 | 873 80 08-00 | Nut Lock w/Wsh 1/2-13 unc |
| 19 | 532 13 98-68 | Arm Suspension Mower |
| 20 | 532 16 35-52 | Retainer Spring |
| 31 | 532 16 98-65 | Bearing, Pvt. Lift |
| 32 | 873 54 06-00 | Nut Crownlock 3/8-24 |

NOTE: All component dimensions given in U.S. inches
1 inch = 25.4 mm



REPAIR PARTS

TRACTOR- -MODEL NO. P145H107RB (P145H107RBC), PRODUCT 964 77 20-01
MOWER



107cm_deck-elect.(CRD)_2

REPAIR PARTS

TRACTOR- -MODEL NO. P145H107RB (P145H107RBC), PRODUCT 964 77 20-01
MOWER

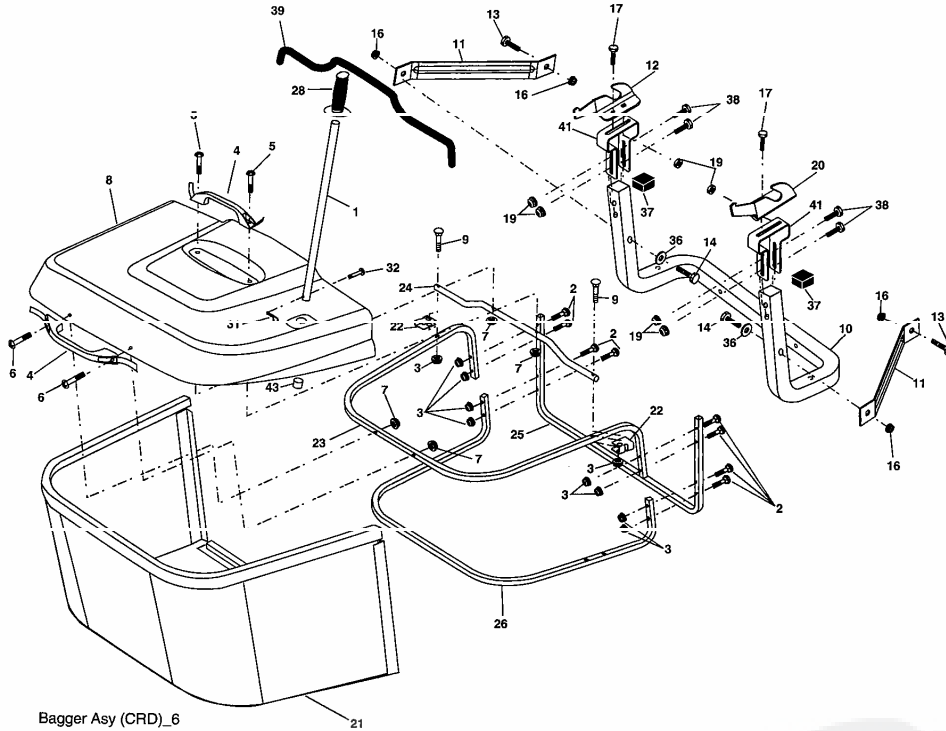
| KEY NO. | PART NO. | DESCRIPTION |
|---------|--------------|------------------------------------|
| 1 | 532 16 91-60 | Housing Asm. Mower |
| 2 | 872 14 05-06 | Bolt Rdhd Sqnk 5/16-18 unc x 3/4 |
| 3 | 532 16 55-69 | Bracket Asm. S-Bar Chass |
| 4 | 532 16 91-67 | Bracket Bar Sway Deck |
| 5 | 532 12 46-70 | Retainer Spring |
| 6 | 532 16 55-57 | Bar Sway |
| 8 | 532 18 17-13 | Bolt 3/8-24 x 1.25 Gr.8 Patched |
| 9 | 810 03 06-00 | Washer Lock Hvy 3/8 Unplated |
| 11 | 532 18 05-83 | Blade 3-1 Lh |
| 13 | 532 13 76-45 | Shaft Asm. W/Lower Bearing |
| 14 | 532 12 87-74 | Housing Mandrel Vented (Machd) |
| 15 | 532 11 04-85 | Bearing Ball Mandrel |
| 16 | 532 18 05-84 | Blade 3-1 Rh |
| 18 | 872 11 06-06 | Bolt RDHD Sht Sqnk 3/8-16 x 3/4 |
| 19 | 532 13 28-27 | Bolt Shoulder 5/16-18 Thd Form |
| 20 | 532 18 17-12 | Bolt 3/8-24 x 1.25 Gr.8 Ptch Lhthd |
| 21 | 972 09 05 00 | Nut Crown Lock 5/16-18 |
| 22 | 532 16 91-65 | Bracket Idler RR |
| 23 | 532 16 91-66 | Bracket Idler RF |
| 24 | 532 16 91-70 | Bracket Suspension LF |
| 25 | 532 16 91-71 | Bracket Suspension RF |
| 26 | 532 16 52-37 | Brace Support Susp Frt CRD |
| 27 | 532 16 91-72 | Bracket Asm. Susp RR |
| 28 | 532 16 91-68 | Bracket Asm. Susp LR |
| 30 | 532 17 39-84 | Screw Thd Rolling |
| 31 | 532 18 76-90 | Washer Spacer |
| 32 | 532 17 57-07 | Mandrel Pulleys |
| 33 | 532 17 83-42 | Nut Flg Top Lock |
| 34 | 532 17 95-09 | Bracket Gauge Wheel Lf |
| 35 | 532 17 62-92 | Bracket Gauge Wheel Rf |
| 36 | 532 14 67-63 | Pulley Idler V-Groove Dim 4.25 |
| 38 | 532 16 98-51 | Spacer Hub |
| 39 | 872 11 06-22 | Bolt RDHD 3/8-16 unc x 2-3/4 Gr.5 |

| KEY NO. | PART NO. | DESCRIPTION |
|---------|--------------|---|
| 40 | 873 68 06-00 | Nut Crownlock 3/8-16 unc |
| 41 | 873 90 06-00 | Nut Lock Flg. 3/8-16 unc |
| 44 | 532 17 55-38 | Cover Mandrel Lh |
| 45 | 532 17 55-39 | Cover Mandrel Rh |
| 46 | 532 13 77-29 | Screw Thd Roll 1/4-20 x 5/8 |
| 55 | 532 16 98-49 | Arm Idler 107 CRD |
| 61 | 532 17 51-59 | Spring Tension Belt |
| 67 | 532 10 69-32 | Knob Rd 3/8-16 Plstc Thds Blk |
| 68 | 532 16 91-78 | Hex-Belt Mower |
| 69 | 532 16 54-82 | Shaft Asm W/Lwr Brg Rh Thd CRD |
| 84 | 532 15 60-85 | Keeper Belt Idler |
| 116 | 532 18 42-19 | Bolt Shoulder |
| 117 | 532 13 39-57 | Wheel Gage Donut Wide |
| 118 | 873 93 06-00 | Nut Centerlock 3/8-16 unc |
| 119 | 819 12 14-14 | Washer 3/8 x 7/8 x 14 Ga. |
| 124 | 872 11 06-12 | Bolt Carr Sh 3/8-16 x 1-1/2 Gr.5 |
| 120 | 972 11 05 00 | Bolt Rdhd sqnk 5/16 18 Unc x 3/4 |
| 131 | 532 16 56-61 | Chute Bagger CRD 92cm |
| 152 | 532 17 60-74 | Cable Clutch CRD Service |
| 158 | 817 72 04-08 | Screw Hex Thdcut 1/4-20 x 1/2 |
| 161 | 532 18 04-24 | Blade Cross LH |
| 162 | 532 18 08-78 | Adapter Weldment Blade |
| 163 | 532 18 04-25 | Blade Cross RH |
| 164 | 532 12 49-37 | Bearing Col Strg |
| 185 | 532 18 82-34 | Head Asm. Cable Clutch |
| -- | 532 18 18-57 | Mandrel Asm Service |
| -- | 532 18 18-58 | Mandrel Asm CRD Lh Threads SVC |
| -- | 532 18 17-70 | Deck Mower Complete (Std deck- order separately gauge wheel components 116-119) |

NOTE: All component dimensions given in U.S. inches
1 inch = 25.4 mm

REPAIR PARTS

TRACTOR- -MODEL NO. P145H107RB (P145H107RBC), PRODUCT 964 77 20-01
BAGGER



| KEY NO. | PART NO. | DESCRIPTION |
|---------|--------------|--------------------------------------|
| 1 | 532 16 52-49 | Tube Handle Bagger CRD |
| 2 | 872 14 04-16 | Bolt Carriage 1/4-20 X 2.0 Gr.5 |
| 3 | 532 12 39-76 | Nut Lock 1/4 Lge Flg Gr. 5 Zinc |
| 4 | 532 16 99-16 | Handle Bagger w/Lvrs Gr. 5 Zinc |
| 5 | 874 98 10-24 | Screw Pan Head #10 24 X 1.50 Blk |
| 6 | 874 98 10-32 | Screw Pan Hd |
| 7 | 873 40 10-00 | Nut Wiz Lock Hex Serr/Hd #10-24 |
| 8 | 532 18 13-87 | Cover Bagger |
| 9 | 872 14 04-18 | Bolt Carriage 1/4-20 x 2.25d x Gr.5 |
| 10 | 532 18 12-82 | Tube Support Bagger CRD |
| 11 | 532 16 57-19 | Bracket Support Upper Bag CRD |
| 12 | 532 18 88-48 | Bracket Pivot LH |
| 13 | 872 11 06-06 | Bolt Rdhd Sht Sqnk 3/8-16 X 3/4 |
| 14 | 874 52 06-36 | Bolt Fin Hex 3/8-16 x 2 -1/4 Gr. 5 |
| 16 | 873 80 06-00 | Nut Lock Fig 3/8-16 unc |
| 17 | 872 14 05-06 | Bolt Rdhd Sht Sqnk 5/16-18 unc x 3/4 |
| 19 | 873 90 05-00 | Nut Lock Hex Flange 5/16-18 |
| 20 | 532 18 88-47 | Bracket Pivot RH |
| 21 | 532 18 08-80 | Bag Asm CRD |

| KEY NO. | PART NO. | DESCRIPTION |
|---------|--------------|--------------------------------|
| 22 | 532 16 57-81 | Bracket Side Bagger CRD |
| 23 | 532 16 57-82 | Tube Upper Bagger CRD |
| 24 | 532 16 57-83 | Tube Pivot Bagger CRD |
| 25 | 532 18 01-24 | Tube Front Bagger CRD |
| 26 | 532 16 57 95 | Tube Lower Bagger CRD |
| 28 | 532 16 57-87 | Grip Handle Black |
| 31 | 532 16 94-84 | Retainer Clip Dia. 290 |
| 32 | 532 12 68-75 | Rivet Rd Hd Drilled 3/8 Dia |
| 36 | 819 13 20-16 | Washer 13/32 x 1-1/4 x 16 Ga. |
| 37 | 532 17 54-01 | Plug Support Bagger CRD |
| 38 | 872 01 05-20 | Bolt 5/16-18 x 2-1/2 |
| 39 | 532 18 09-85 | Seal |
| 41 | 532 16 96-83 | Bracket Vert Adj Bagger CRD |
| 42 | 873 80 05-00 | Nut Lock Hex W/Ins 5/16-18 unc |
| 43 | 534 17 40-53 | Plug Tubing End |

NOTE: All component dimensions given in U.S. inches
1 inch = 25.4 mm