

**REPAIR PARTS MANUAL**  
**MODEL NO. REQ11CRDA**  
**Lawn Tractor**

---

**Rally**

# HOW TO USE THIS MANUAL

This manual is designed to provide the customer with a means to identify the parts on his/her tractor when ordering repair parts. The illustrations may or may not represent the actual assemblies; therefore, it is not recommended to use this manual as a guide to assemble or disassemble the tractor. Some hardware and parts are drawn larger in order to more readily identify them.

Each tractor has its own model number.

The model number for your tractor can be found on the fender under the seat.

When ordering parts, always give the following information:

- Product - "Tractor"
- Model Number - "REQ11CRDA"
- Part Number
- Part Description

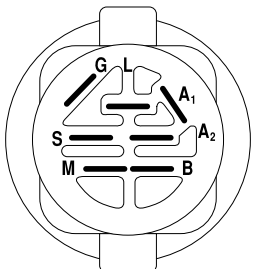
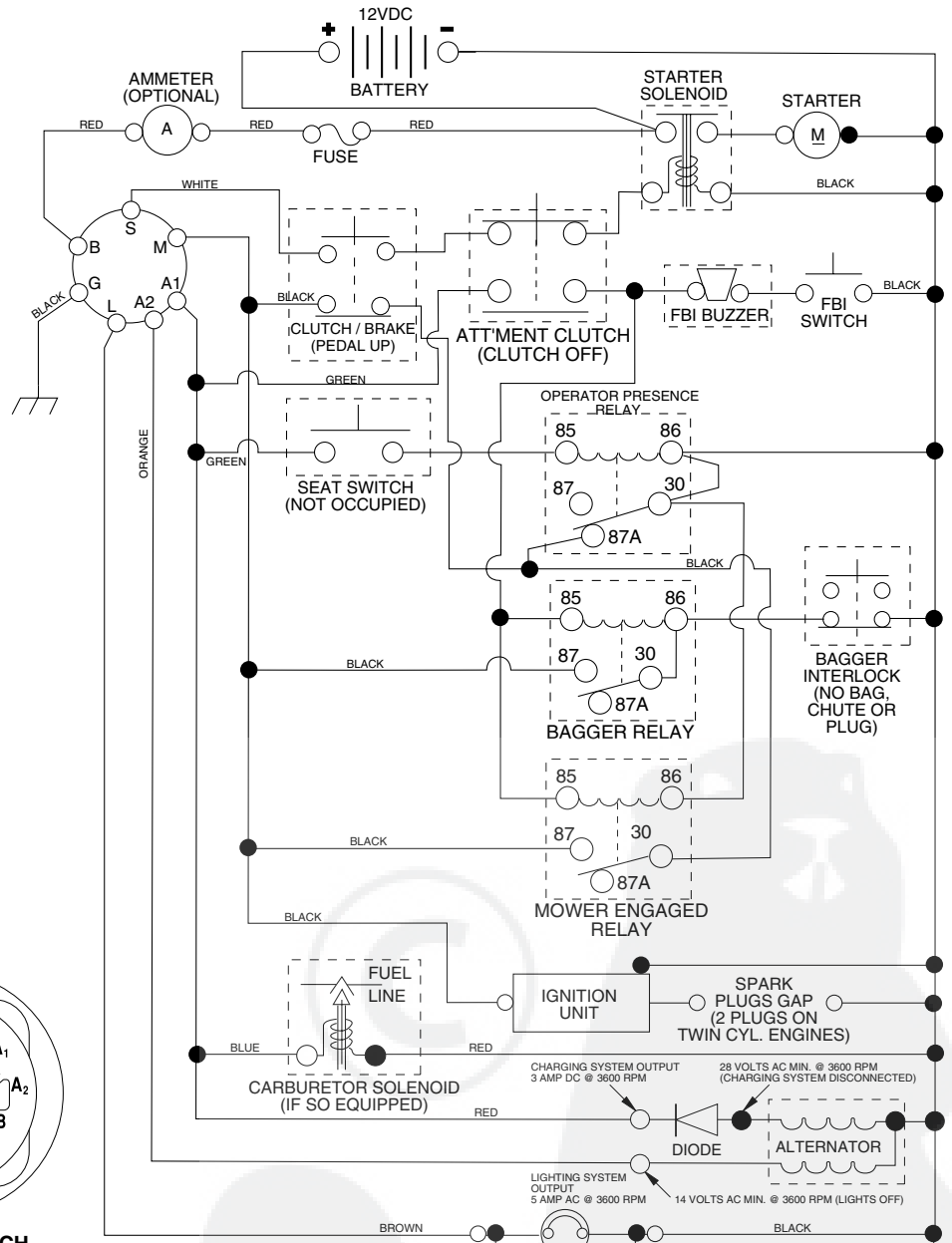
## TABLE OF CONTENTS

|                 |       |
|-----------------|-------|
| SCHEMATIC.....  | 3     |
| ELECTRICAL..... | 4-5   |
| CHASSIS.....    | 6-7   |
| DRIVE.....      | 8-9   |
| STEERING.....   | 10-11 |
| SEAT.....       | 12    |
| DECALS.....     | 13    |
| ENGINE.....     | 14-15 |
| MOWER LIFT..... | 16-17 |
| MOWER DECK..... | 18-19 |
| BAGGER.....     | 20-21 |

# REPAIR PARTS

## TRACTOR- -MODEL NO. REQ11CRDA, PRODUCT 954 56 81-75

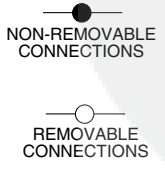
### SCHEMATIC



**IGNITION SWITCH**

| POSITION  | CIRCUIT    | "MAKE" |
|-----------|------------|--------|
| OFF       | M+G+A1     | NONE   |
| RUN/LIGHT | B+A1       | A2+L   |
| RUN       | B+A1       | NONE   |
| START     | B + S + A1 | NONE   |

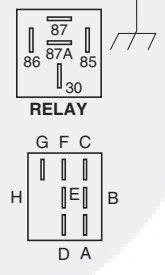
**WIRING INSULATED CLIPS**  
**NOTE:** IF WIRING INSULATED CLIPS WERE REMOVED FOR SERVICING OF UNIT, THEY SHOULD BE REPLACED TO PROPERLY SECURE YOUR WIRING.



**PTO SWITCH**

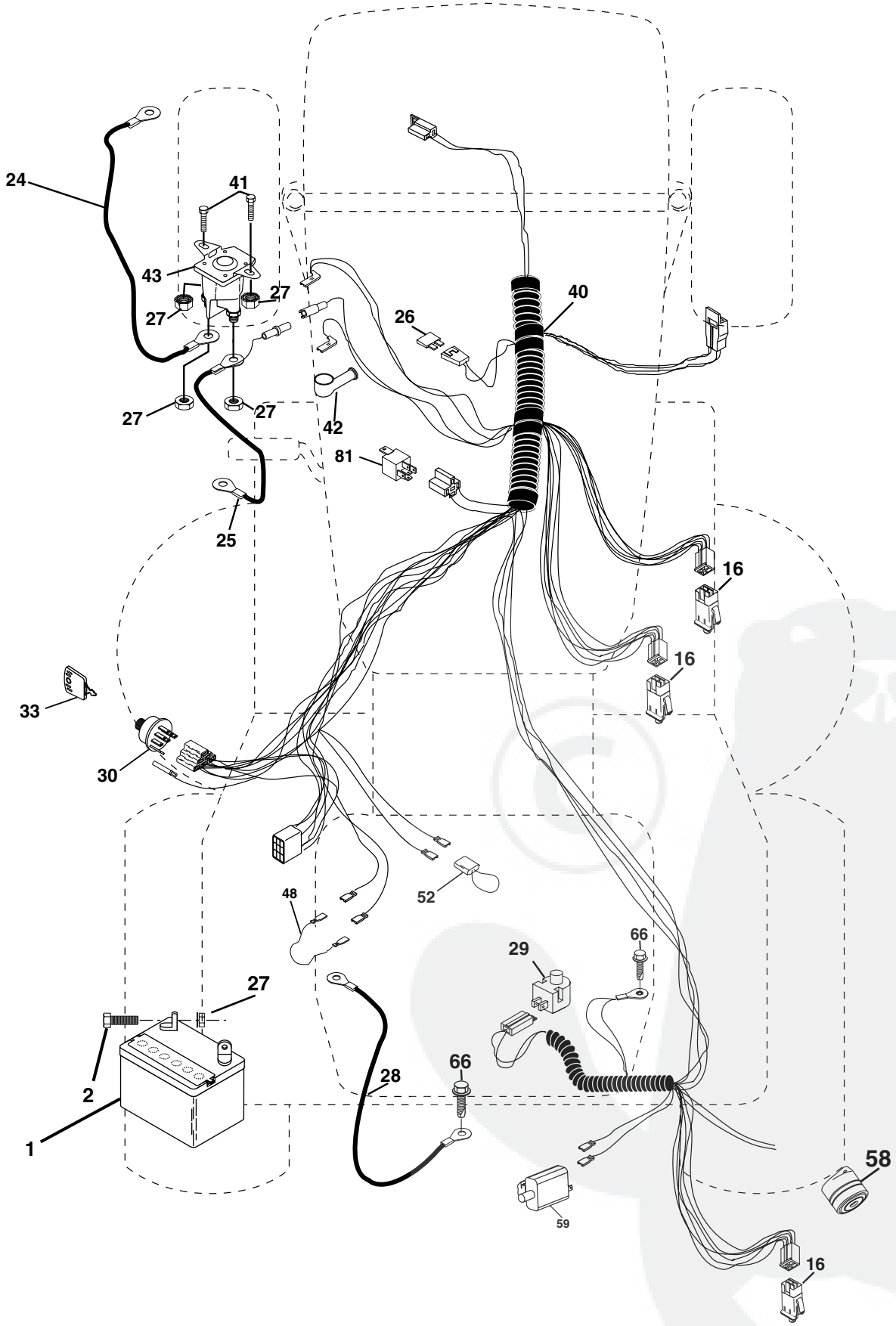
| POSITION | CIRCUIT             |
|----------|---------------------|
| OFF      | C + G, B + H        |
| ON       | C + F, B + E, A + D |

**NOTE**  
 YOUR TRACTOR IS EQUIPPED WITH A SPECIAL ALTERNATOR SYSTEM. THE LIGHTS ARE NOT CONNECTED TO THE BATTERY, BUT HAVE THEIR OWN ELECTRICAL SOURCE. BECAUSE OF THIS, THE BRIGHTNESS OF THE LIGHTS WILL CHANGE WITH ENGINE SPEED. AT IDLE THE LIGHTS WILL DIM. AS THE ENGINE IS SPEEDED UP, THE LIGHTS WILL BECOME THEIR BRIGHTEST.



# REPAIR PARTS

TRACTOR- -MODEL NO. REQ11CRDA, PRODUCT 954 56 81-75  
ELECTRICAL

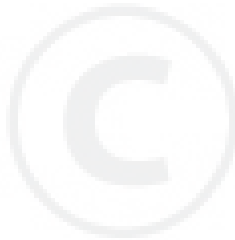


# REPAIR PARTS

## TRACTOR- -MODEL NO. REQ11CRDA, PRODUCT 954 56 81-75 ELECTRICAL

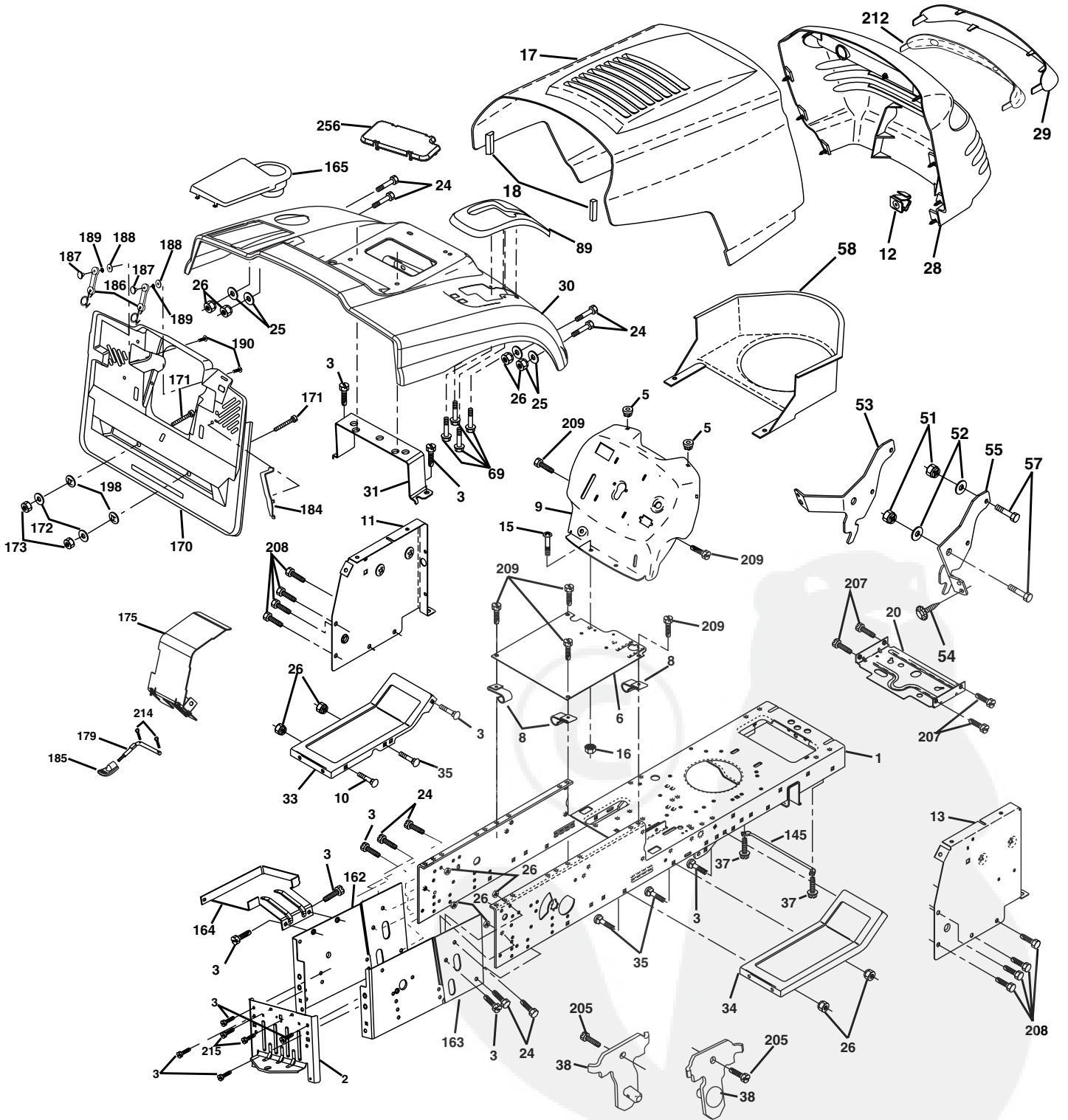
| KEY NO. | PART NO. | DESCRIPTION                       |
|---------|----------|-----------------------------------|
| 1       | 163465   | Battery                           |
| 2       | 74760412 | Bolt Hex Hd 1/4-20 Unc X 3/4      |
| 16      | 176138   | Switch Interlock                  |
| 24      | 4799J    | Cable Starter 6Ga 11" Red         |
| 25      | 165987   | Cable Battery Crd 56" Red         |
| 26      | 175158   | Fuse 20 Amp                       |
| 27      | 73510400 | Nut Keps Hex 1/4-20 Unc           |
| 28      | 127725   | Cable Ground 6 Ga 18" Black       |
| 29      | 160784   | Switch Plunger Normal Op Olive    |
| 30      | 175567   | Switch Ignition                   |
| 33      | 140401   | Key Ign                           |
| 40      | 180020   | Harness Ign                       |
| 41      | 71110408 | Bolt Flk Fin Hex 1/4-20 Unc X 1/2 |
| 42      | 131563   | Cover Terminal Red                |
| 43      | 178861   | Solenoid                          |
| 48      | 140844   | Adapter Ammeter Rectangular       |
| 52      | 141940   | Protection Wire Loop              |
| 58      | 169419   | Buzzer Crd                        |
| 59      | 180379   | Switch FBI CRD                    |
| 66      | 17490608 | Screw Thdrol 3/8-16 x 1/2 Ty-Tt   |
| 81      | 109748   | Relay Asm                         |

**NOTE:** All component dimensions given in U.S. inches.  
1 inch = 25.4 mm.



# REPAIR PARTS

TRACTOR- -MODEL NO. REQ11CRDA, PRODUCT 954 56 81-75  
CHASSIS AND ENCLOSURES



# REPAIR PARTS

## TRACTOR- -MODEL NO. REQ11CRDA, PRODUCT 954 56 81-75 CHASSIS AND ENCLOSURES

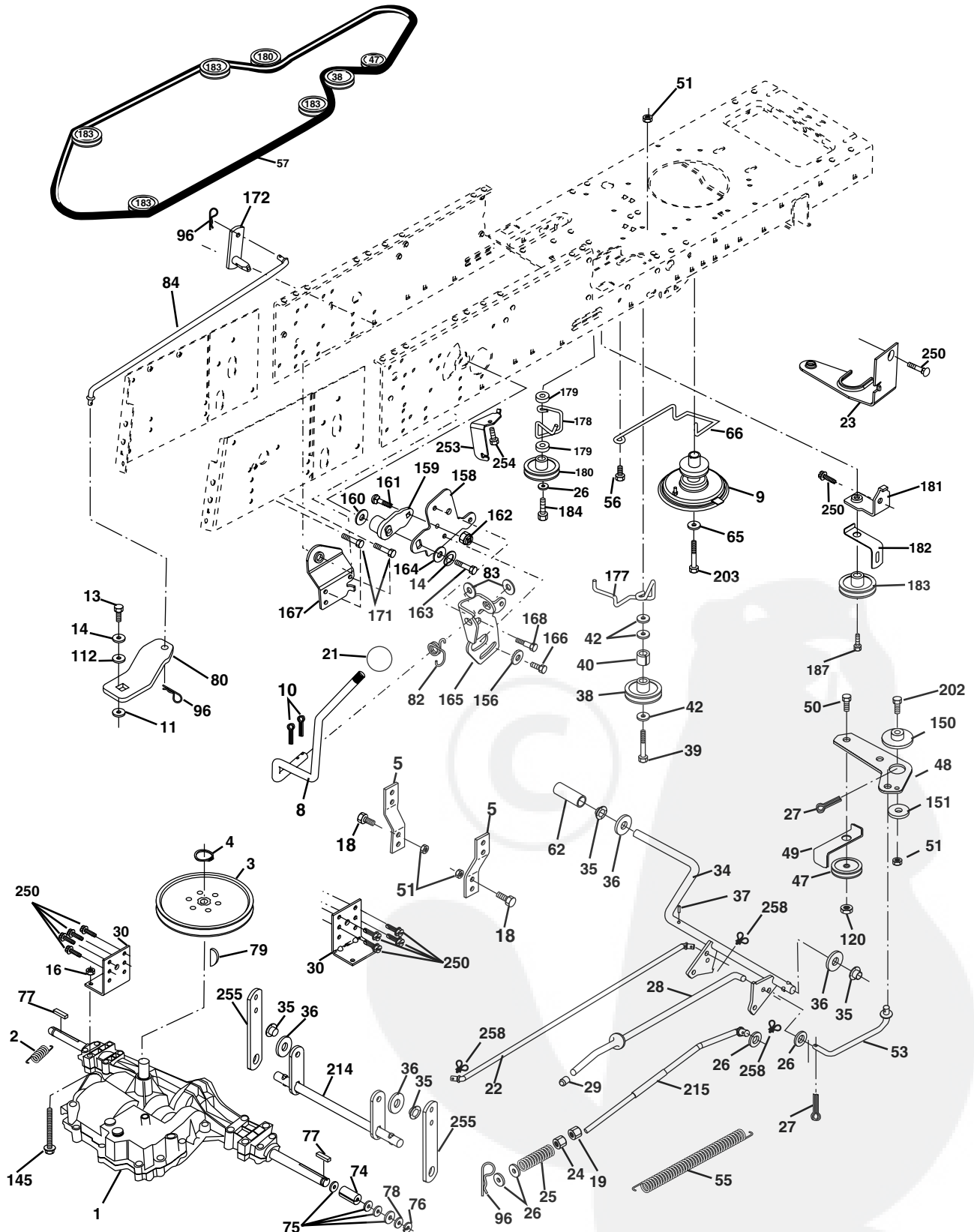
| KEY NO. | PART NO.   | DESCRIPTION                                  | KEY NO. | PART NO.   | DESCRIPTION                         |
|---------|------------|--|---------|------------|-------------------------------------|
| 1       | 174620     | Chassis                                      | 58      | 150127     | Duct Air Engine                     |
| 2       | 180384     | Drawbar                                      | 69      | 142432     | Screw Hex Wsh                       |
| 3       | 17060612   | Screw 3/8-16 x 3/4                           | 89      | 177288X428 | Console                             |
| 5       | 155272     | BumperHood/Dash                              | 145     | 156524     | Rod Pivot Chassis/Hood              |
| 6       | 155923     | Saddle                                       | 162     | 180382     | Bracket Exten Chassis Lh CRD        |
| 8       | 126471X    | Clip Insulator 13/32 Mtg. Hole               | 163     | 180383     | Bracket Exten Chassis Rh CRD        |
| 9       | 168347X011 | Dash   | 164     | 165605     | Support Battery CRD                 |
| 10      | 72140608   | Bolt, Carriage 3/8-16 x 3/4                  | 165     | 179020X428 | Cover Battery                       |
| 11      | 155927     | Panel, Dash, L.H.                            | 170     | 178862     | Backplate Asm CRD                   |
| 12      | 145660     | Clip Tinnerman                               | 171     | 72140620   | Bolt Rdhd Sqnk 3/8-16 x 2-1/2 Gr. 5 |
| 13      | 172107X010 | Panel, Asm. Dash R.H.                        | 172     | 19132016   | Washer 13/32 x 1-1/4 x 16 Ga.       |
| 15      | 74180512   | Screw, Machine, Truss Head 5/16-18 UNC x 3/4 | 173     | 73510600   | Nut, Keps Hex 3/8-16 UNC            |
| 16      | 73510500   | Nut  | 175     | 180310     | Guard Trap                          |
| 17      | 159639X505 | Hood   | 179     | 180376     | Rod Pivot FBI CRD                   |
| 18      | 126938X    | Bumper Hood                                  | 184     | 174662     | Bracket Actuator Bagger CRD         |
| 20      | 180679     | Plate Mtg. Battery/Tank                      | 185     | 179608X505 | Knob Rod Brake Parking              |
| 24      | 74780616   | Bolt   | 186     | 160793     | Latch Asm Mulch/Bagger              |
| 25      | 19131312   | Washer 13/32 x 13/16 x 12 Gauge              | 187     | 2029J      | Nut Weld                            |
| 26      | 73800600   | Nut  | 188     | 19061216   | Washer #10                          |
| 28      | 179103     | Grille /Lens Asm                             | 189     | 10071000   | Washer Lock #10                     |
| 29      | 140273X428 | Lens, Grille                                 | 190     | 71081010   | Screw Pan Hd Phillip 10-24 x 5/8    |
| 30      | 169962     | Fender                                       | 198     | 168937     | Nut, Push                           |
| 31      | 165156     | Bracket, Fender Support                      | 205     | 17490608   | Screw Thdrol 3/8-16 x 1/2           |
| 33      | 179716X505 | Footrest, L.H.                               | 207     | 17670508   | Screw Thdrol 5/16-18 1/2            |
| 34      | 179717X505 | Footrest, R.H.                               | 208     | 17670608   | Screw Thdrol 3/8-16 x 1/2           |
| 35      | 72110606   | Bolt   | 209     | 17000612   | Screw Hex Wsh Thdrol 3/8-16         |
| 37      | 17490508   | Screw Thdrol 5/16-18 x 1/2 TYT               | 212     | 156229     | Insert Lens Reflective              |
| 38      | 175710     | Bracket Asm Pivot Mower Rear                 | 214     | 4497H      | Retainer Spring                     |
| 51      | 73800400   | Nut Lock w/Ins 1/4-20                        | 215     | 17060508   | Screw 5/16-18 x 1/2                 |
| 52      | 19091416   | Washer 9/32 x 7/8 x 16 Ga.                   | 256     | 180810X428 | Cover Fender Rack CRD               |
| 53      | 144697     | Bracket Grille Lh P/L                        | --      | 5479J      | Plug, Button                        |
| 54      | 151464     | Screw Hex WSHD 8-18 x 7/8                    |         |            |                                     |
| 55      | 144696     | Bracket grille RH P/L                        |         |            |                                     |
| 57      | 74780412   | Bolt Fin Hex 1/4-20 x 3/4                    |         |            |                                     |

**NOTE:** All component dimensions given in U.S. inches.  
1 inch = 25.4 mm.

# REPAIR PARTS

TRACTOR- -MODEL NO. REQ11CRDA, PRODUCT 954 56 81-75

## DRIVE





# REPAIR PARTS

TRACTOR- -MODEL NO. REQ11CRDA, PRODUCT 954 56 81-75

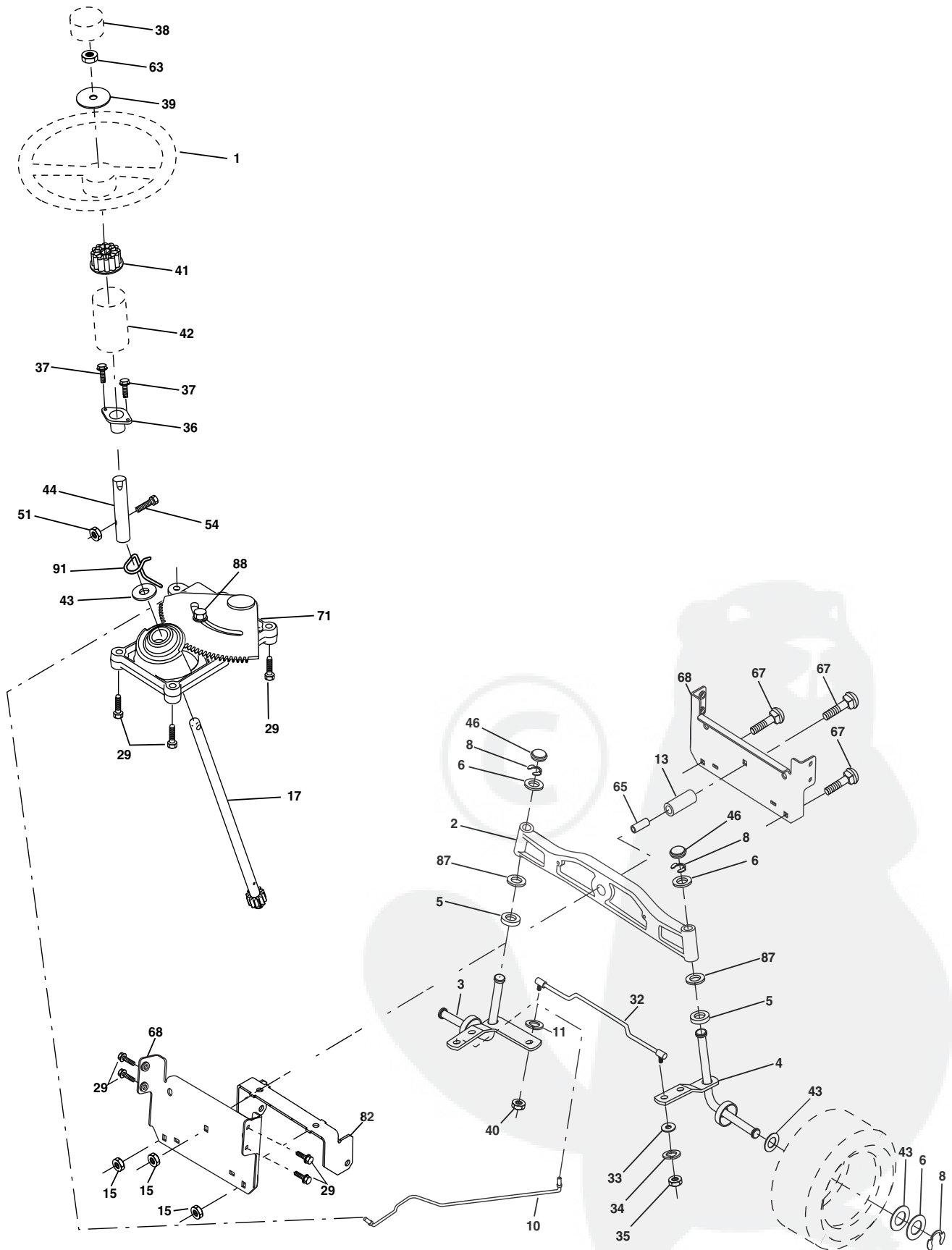
## DRIVE

| KEY NO. | PART NO. | DESCRIPTION   | KEY NO. | PART NO. | DESCRIPTION                        |
|---------|----------|---|---------|----------|------------------------------------|
| 1       | -----    | Transaxle Peerless 206-546<br>(Order parts from transaxle manufacturer) | 78      | 121748X  | Washer 25/32 x 1-5/8 x 16 Ga.      |
| 2       | 146682   | Spring Brake Return   | 79      | 2228M    | Key Woodruff                       |
| 3       | 165999   | Pulley Transaxle  | 80      | 145090   | Arm Shift PMST 20" Tires           |
| 4       | 12000028 | Ring Retainer #5100-62  | 82      | 165711   | Spring, Torsion                    |
| 5       | 121520X  | Strap torque 30 degrees   | 83      | 19171216 | Washer 17/32 x 3/4 x 16 Ga.        |
| 8       | 165619   | Rod Shift Fender Adjust Lt  | 84      | 165621   | Link Shift CRD Pmst 18" Tires      |
| 9       | 170163   | Clutch Asm Noram  | 96      | 4497H    | Spring, Retainer 1"                |
| 10      | 76020416 | Pin, Cotter 1/8 x 1   | 112     | 19091210 | Washer 9/32 x 3/4 x 10 Ga.         |
| 11      | 105701X  | Washer Plate Shf .3888 sq hole  | 120     | 73900600 | Nut Lock Flg. 3/8-16 UNC           |
| 13      | 74550412 | Bolt 1/4-28 Unf Gr 8 w/patch  | 145     | 74490540 | Bolt Hex FGHD 5/16-18 x Gr 5       |
| 14      | 10040400 | Washer, Lock Hvy Helical  | 150     | 165850   | Bushing, Bellcrank Grnd Dr         |
| 16      | 73800500 | Nut, Lock Hex w/Ins 5/16-18 UNC   | 151     | 19133210 | Washer 13/32 x 2 x 10 Ga.          |
| 18      | 74780616 | Bolt Hex 3/8-16 UNC x 1 Gr.5  | 156     | 166002   | Washer Srred 5/16 ID x 1.125       |
| 19      | 73800600 | Nut, Lock Hex w/Wsh 3/8-16 UNC  | 158     | 165589   | Bracket Shift Mount                |
| 21      | 106933X  | Knob Rd 1/2-13 Plstc Thds Blk   | 159     | 165494   | Hub Tapered Flange Shift Lt        |
| 22      | 175607   | Rod, Brake CRD  | 160     | 19292016 | Washer 29/32 x 1-1/4 x 16 Ga.      |
| 23      | 180302   | Bracket Pnt Clutch Noram  | 161     | 72140406 | Bolt Rdhd Sqnk 1/4-20 x 3/4 Gr 5   |
| 24      | 73350600 | Nut   | 162     | 73680400 | Nut Crownlock 1/4-20 Unc           |
| 25      | 106888X  | Spring, Rod, Brake  | 163     | 74780416 | Bolt Hex Fin 1/4-20 Unc x 1 Gr 5   |
| 26      | 19131316 | Washer 13/32 x 13/16 x 16 Ga.   | 164     | 19091010 | Washer 5/8 x .281 x 10 Ga.         |
| 27      | 76020412 | Pin, Cotter 1/8 x 3/4   | 165     | 165623   | Bracket Pivot Lever                |
| 28      | 175765   | Rod, Parking Brake  | 166     | 166880   | Screw 5/16-18 x 5/8                |
| 29      | 71673    | Cap, Parking Brake  | 167     | 165588   | Bracket Support Shift CRD          |
| 30      | 174973   | Bracket, Mfg. Transaxle   | 168     | 165492   | Bolt Shoulder 5/16-18 x .561       |
| 34      | 175578   | Shaft, Asm Pedal Foot   | 171     | 17490608 | Screw Thdrol 3/8-16 x 1/2 Ty-Tt    |
| 35      | 120183X  | Bearing, Nylon  | 172     | 165635   | Shaft Asm Shift Front CRD PMST     |
| 36      | 19211616 | Washer 21/32 x 1 x 16 Ga.   | 177     | 165932   | Keeper Flat Idler 3.06" CRD        |
| 37      | 1572H    | Pin, Roll 3/16 x 1"   | 178     | 165933   | Keeper Belt Idler 1.88" CRD        |
| 38      | 165936   | Pulley, Flat  | 179     | 120958X  | Washer Sintered                    |
| 39      | 74760644 | Bolt Fin Hex 3/8-16 Unc x 2-3/4   | 180     | 165630   | Pulley Flat Idler                  |
| 40      | 4470J    | Spacer, Split 395 x 59 Bzp  | 181     | 180211   | Bracket Idler Ground Drive CRD     |
| 42      | 19131312 | Washer 13/32 x 13/16 x 12 Ga.   | 182     | 165634   | Keeper Belt 2.5" Od V-Idler CRD    |
| 47      | 127783   | Pulley, Idler, V Groove Plasitc   | 183     | 179050   | Pulley V-Idler                     |
| 48      | 154407   | Bellcrank Clutch Grnd Drv   | 184     | 17490644 | Screw Hexwsh Thdrol 3/8-16 x 2-3/4 |
| 49      | 123205X  | Retainer, Belt Style Spring   | 187     | 17580520 | Screw thdrol 5/16-18 x 1.25        |
| 50      | 74760624 | Bolt Hex Hd 3/8-16 UNC x 1-1/2  | 202     | 72110612 | Bolt Carr Sh 3/8-16 x 1-1/2 Gr. 5  |
| 51      | 73680600 | Nut, Crownlock 3/8-16 UNC   | 203     | 71170780 | Bolt Hex 7/16-20 x 5               |
| 53      | 105710X  | Link, Clutch 7.66   | 214     | 175609   | Shaft Asm Blade                    |
| 55      | 105709X  | Spring, Return, Clutch  | 215     | 175651   | Rod Brake Secondary                |
| 56      | 17060620 | Screw 3/8-16 x 1-1/4  | 250     | 17060612 | Screw 3/8-16 x .75                 |
| 57      | 165631   | V-Belt Kev PMST CRD   | 253     | 175028   | Bracket Cable Chassis              |
| 62      | 8883R    | Cover, Pedal  | 254     | 17060616 | Screw 3/8-16 x 1                   |
| 65      | 10040700 | Washer  | 255     | 175608   | Brace Shaft Brake Mtg.             |
| 66      | 154778   | Keeper, Belt Engine F-Proof   | 258     | 178062   | Clip Retainer                      |
| 74      | 137057   | Spacer Axle   |         |          |                                    |
| 75      | 121749X  | Washer 25/32 x 1-1/4 x 16 Ga.   |         |          |                                    |
| 76      | 12000001 | Ring, E   |         |          |                                    |
| 77      | 123583X  | Key, Square   |         |          |                                    |

**NOTE:** All component dimensions given in U.S. inches  
1 inch = 25.4 mm

# REPAIR PARTS

## TRACTOR- -MODEL NO. REQ11CRDA, PRODUCT 954 56 81-75 STEERING ASSEMBLY



# REPAIR PARTS

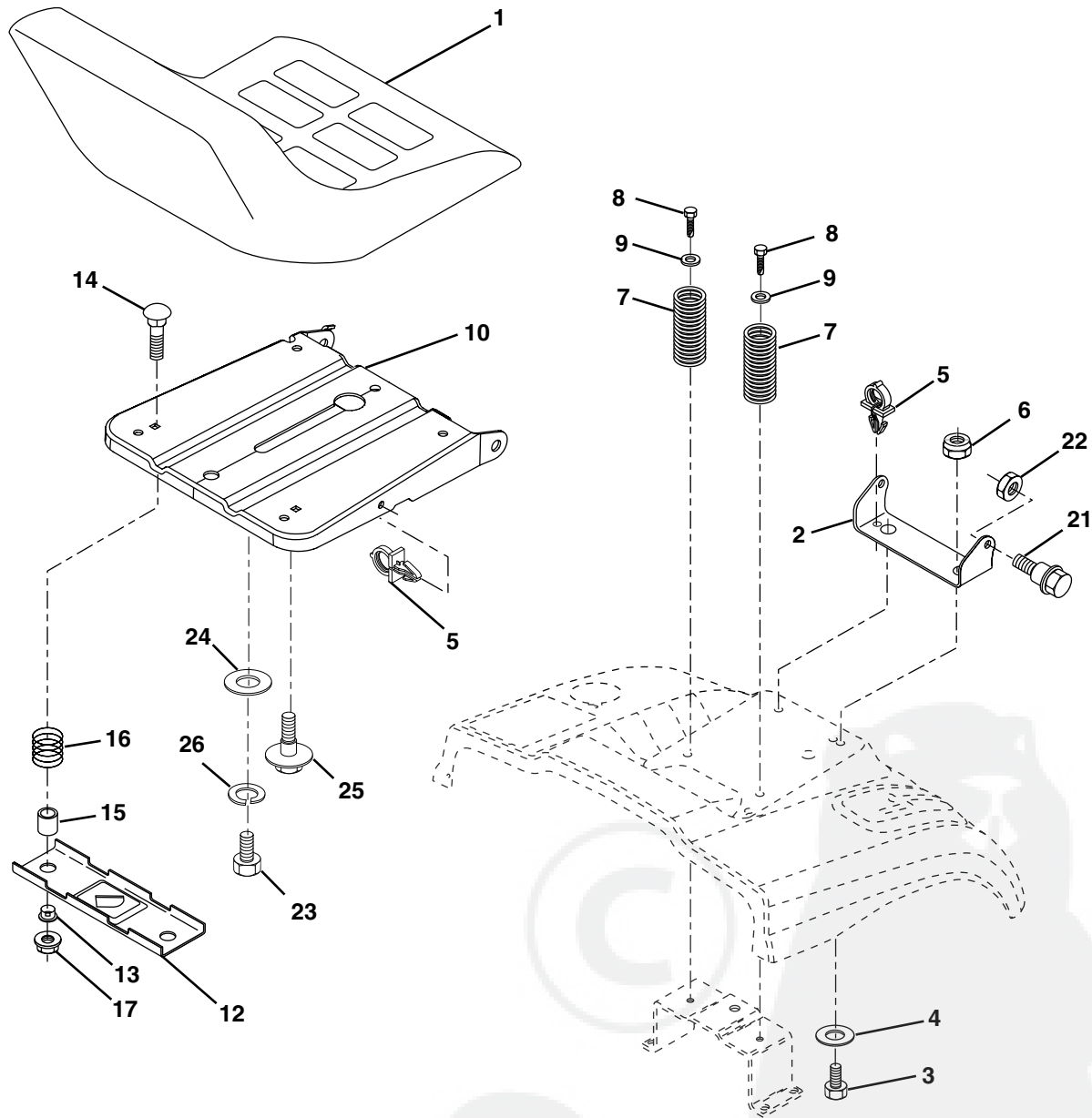
## TRACTOR- -MODEL NO. REQ11CRDA, PRODUCT 954 56 81-75 STEERING ASSEMBLY

| KEY NO. | PART NO.   | DESCRIPTION                       |
|---------|------------|-----------------------------------|
| 1       | 139768     | Steering Wheel                    |
| 2       | 172393     | Axle Asm Cast Iron Lt             |
| 3       | 169840     | Spindle Assembly, L.H.            |
| 4       | 169839     | Spindle Assembly, R.H.            |
| 5       | 6266H      | Washer, Thrust .75 x 1.230        |
| 6       | 121748X    | Washer 25/32 x 1-5/8 x 16 Gauge   |
| 8       | 12000029   | Ring, Klip                        |
| 10      | 175121     | Link, Drag                        |
| 11      | 10040600   | Washer, Lock                      |
| 13      | 136518     | Spacer Brg Axle Front             |
| 15      | 145212     | Nut, Hex Flange Lock              |
| 17      | 177876     | Shaft Assembly, Steering          |
| 29      | 17060612   | Screw 3/8-16 x 3/4                |
| 32      | 170162     | Rod, Tie                          |
| 33      | 19111216   | Washer 11/32 x 3/4 x 16 Ga.       |
| 34      | 10040500   | Washer Lock Hvy Hlcl Spr 5/16     |
| 35      | 73540500   | Crownlock Nut 5/16-24 Unf         |
| 36      | 155099     | Bushing, Steering                 |
| 37      | 152927     | Screw TT #10-32 x 5 x 3/8 Flange  |
| 38      | 140175     | Cap Wheel Steering                |
| 39      | 19133812   | Washer 13/32 x 2-3/8 x 12 G       |
| 40      | 7810H      | Nut Lock Center 3/8-24 Unf        |
| 41      | 100711L    | Adaptor, Steering Wheel           |
| 42      | 145054X428 | Boot, Steering Dash P/L Mtl       |
| 43      | 121749X    | Washer 25/32 x 1-1/4 x 16 Gauge   |
| 44      | 153720     | Extension Steering                |
| 46      | 121232X    | Cap, Spindle                      |
| 51      | 73800500   | Nut Lock Hex 5/16-18              |
| 54      | 74780520   | Bolt Fin Hex 5/16-18 x 1-1/4      |
| 63      | 74780616   | Bolt Fin Hex 3/8-16 Unc x 1 Gr. 5 |
| 65      | 160367     | Spacer Brace Axle                 |
| 67      | 72140618   | Bolt Rdhd Sq 3/8-16 x 2-1/4       |
| 68      | 169827     | Brace Axle                        |
| 71      | 175146     | Steering Asm.                     |
| 82      | 169835     | Bracket Susp Chassis Front 15"    |
| 87      | 173966     | Washer Flat .781 x 1-1/2 x .14    |
| 88      | 175118     | Bolt Shoulder 7/16-20 UNC         |
| 91      | 175553     | Clip Steering                     |

**NOTE:** All component dimensions given in U.S. inches.  
1 inch = 25.4 mm.

# REPAIR PARTS

## TRACTOR- -MODEL NO. REQ11CRDA, PRODUCT 954 56 81-75 SEAT ASSEMBLY



| KEY NO. | PART NO. | DESCRIPTION                    |
|---------|----------|--------------------------------|
| 1       | 175389   | Seat                           |
| 2       | 140551   | Bracket Pnt Pivot Seat (blk )  |
| 3       | 71110616 | Bolt Fin Hex 3/8-16 x 1. Blk   |
| 4       | 19131610 | Washer Flat 13/32 x 1 x 10 Ga. |
| 5       | 145006   | Clip Push In Hinged            |
| 6       | 73800600 | Nut Lock Hex w/Ins 3/8-16      |
| 7       | 124181   | Spring Seat Cprsn 2 250 Blk Zi |
| 8       | 17000616 | Screw 3/8-16 X 1-1/2           |
| 9       | 19131614 | Washer 13/32 X 1 X 14 Ga       |
| 10      | 174894   | Pan Pnt Seat (blk )            |
| 12      | 121246   | Bracket Pnt Mounting Switch    |
| 13      | 121248   | Bushing Snap Blk Nyl 50 Id     |

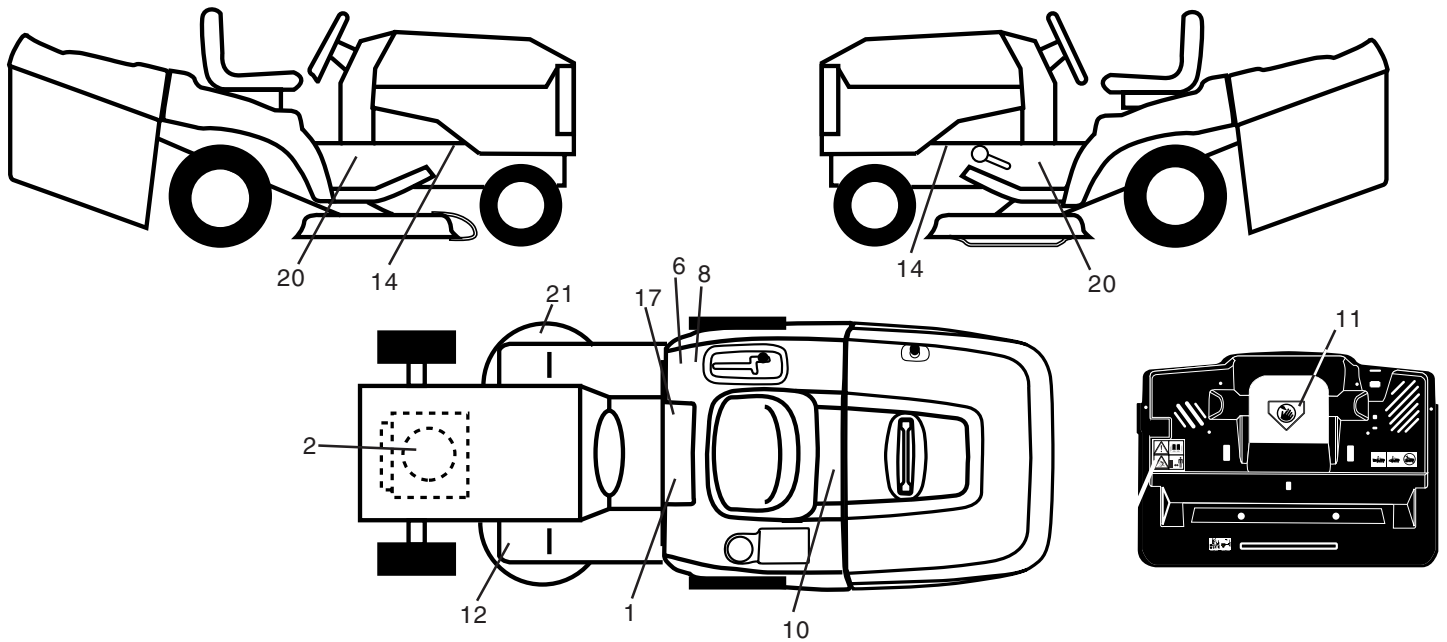
| KEY NO. | PART NO. | DESCRIPTION                    |
|---------|----------|--------------------------------|
| 14      | 72050412 | Bolt Rdhd Sht Nk 1/4-20x1-1/2  |
| 15      | 134300   | Spacer Split                   |
| 16      | 121250   | Spring Cprsn Plate SW 1.310 Ga |
| 17      | 123976   | Nut Lock 1/4 Lge Flg Gr 5 Zinc |
| 21      | 171852   | Bolt Shoulder 5/16-18 Unc-2A   |
| 22      | 73800500 | Nut Hex Lock w/Ins 5/16-18     |
| 23      | 71110814 | Bolt Hex Black                 |
| 24      | 19171912 | Washer 17/32 X 1-3/16 X 12 Ga. |
| 25      | 127018   | Bolt Shoulder 5/16-18 X 62     |
| 26      | 10040800 | Washer Lock Hvy Hlcl Spr 1/2   |

**NOTE:** All component dimensions given in U.S. inches.  
1 inch = 25.4 mm

# REPAIR PARTS

TRACTOR- -MODEL NO. REQ11CRDA, PRODUCT 954 56 81-75

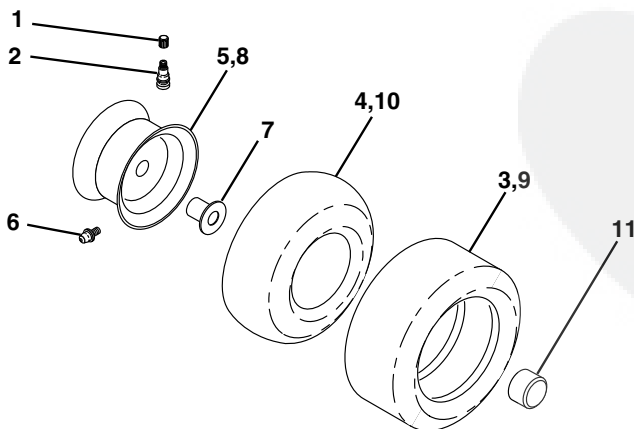
## DECALS



| KEY NO. | PART NO. | DESCRIPTION                   |
|---------|----------|-------------------------------|
| 1       | 145498   | Decal Read Owner's Manual Sym |
| 2       | 170843   | Decal Hp Engine               |
| 6       | 126187   | Decal 100 DBA                 |
| 8       | 145437   | Decal Europe Stand Ce         |
| 10      | 145005   | Decal Bat Dan/Poi P/L Sym Wpn |
| 11      | 145494   | Decal Mower Cut Finger Symbol |
| 12      | 159737   | Decal Brake/Clutch Symbol Lt  |
| 14      | 159736   | Decal Chassis Hot Muffler     |
| 17      | 140837   | Decal Saddle Brake Parking    |

| KEY NO. | PART NO.   | DESCRIPTION               |
|---------|------------|---------------------------|
| 20      | 181148     | Decal Chassis             |
| 21      | 166286     | Decal Hex Belt Sch 92 CRD |
| —       | 138311     | Decal Lift Handle         |
| —       | 179769X428 | Pad Footrest RH           |
| —       | 179768X428 | Pad Footrest LH           |
| —       | 180435     | Decal                     |
| —       | 181307     | Manual Operator's (Euro)  |
| —       | 181308     | Manual Parts              |

## WHEELS & TIRES



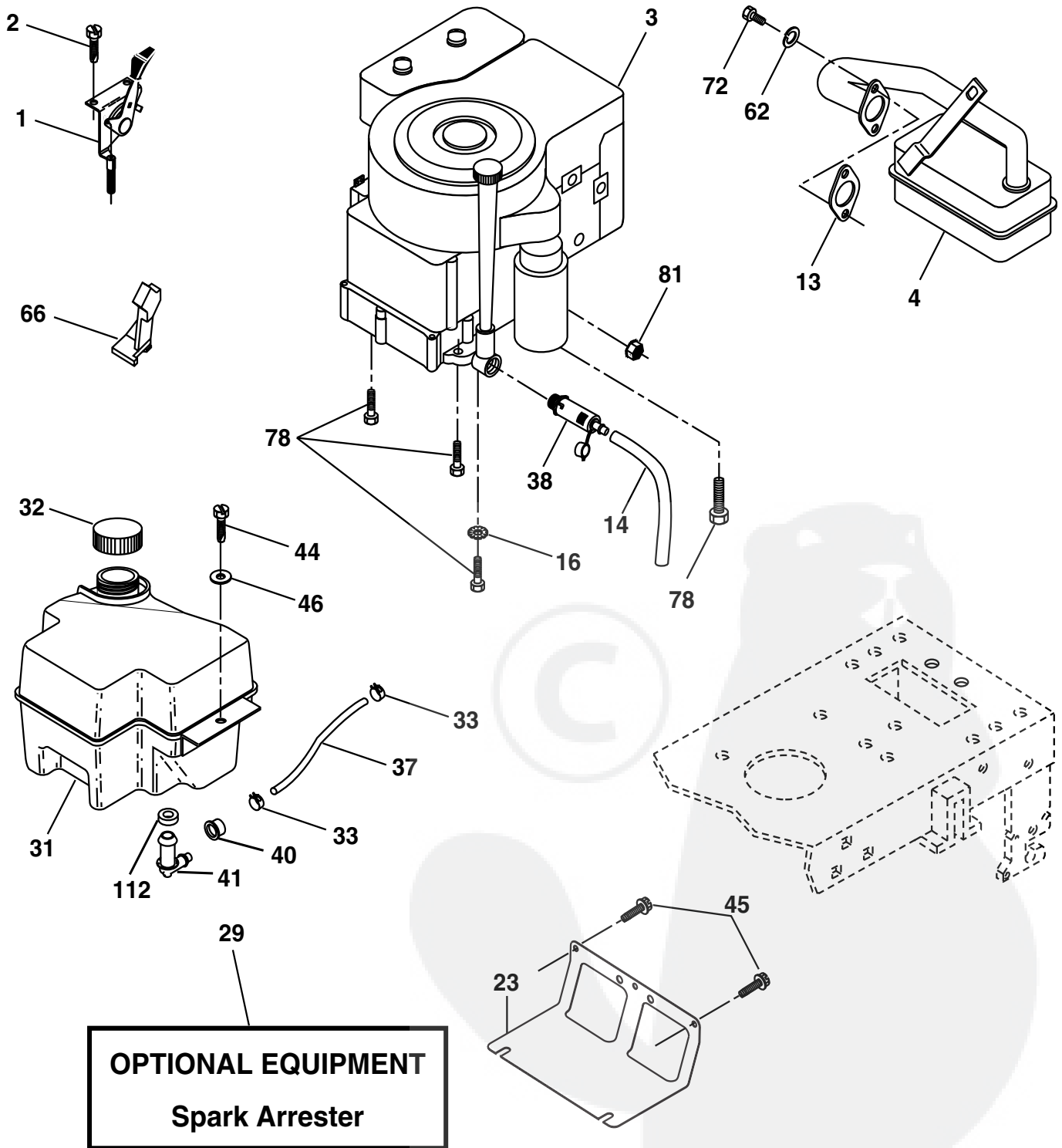
| KEY NO. | PART NO.   | DESCRIPTION                    |
|---------|------------|--------------------------------|
| 1       | 59192      | Cap Value Tire                 |
| 2       | 65139      | Stem Value                     |
| 3       | 106222     | Tire F Ts 15 X 6 0 - 6 Service |
| 4       | 59904      | Tube InnerFront #35060         |
| 5       | 106732X427 | Rim Asm 6"front Service        |
| 6       | 278H       | Fitting Grease                 |
| 7       | 9040H      | Bearing Flange                 |
| 8       | 106108X427 | Rim Asm 8"rear Service         |
| 9       | 124635     | Tire R Ts 20 x 8-8 Service     |
| 10      | 7152J      | Tube Rear 9 5 X 8 Service      |
| 11      | 104757X428 | Cap Axle Blk 1 50 X 1 00       |
| --      | 144334     | Sealant, Tire (10 oz. tube)    |

**NOTE:** All component dimensions given in U.S. inches  
1 inch = 25.4 mm

# REPAIR PARTS

TRACTOR- -MODEL NO. REQ11CRDA, PRODUCT 954 56 81-75

ENGINE



# REPAIR PARTS

TRACTOR- -MODEL NO. REQ11CRDA, PRODUCT 954 56 81-75

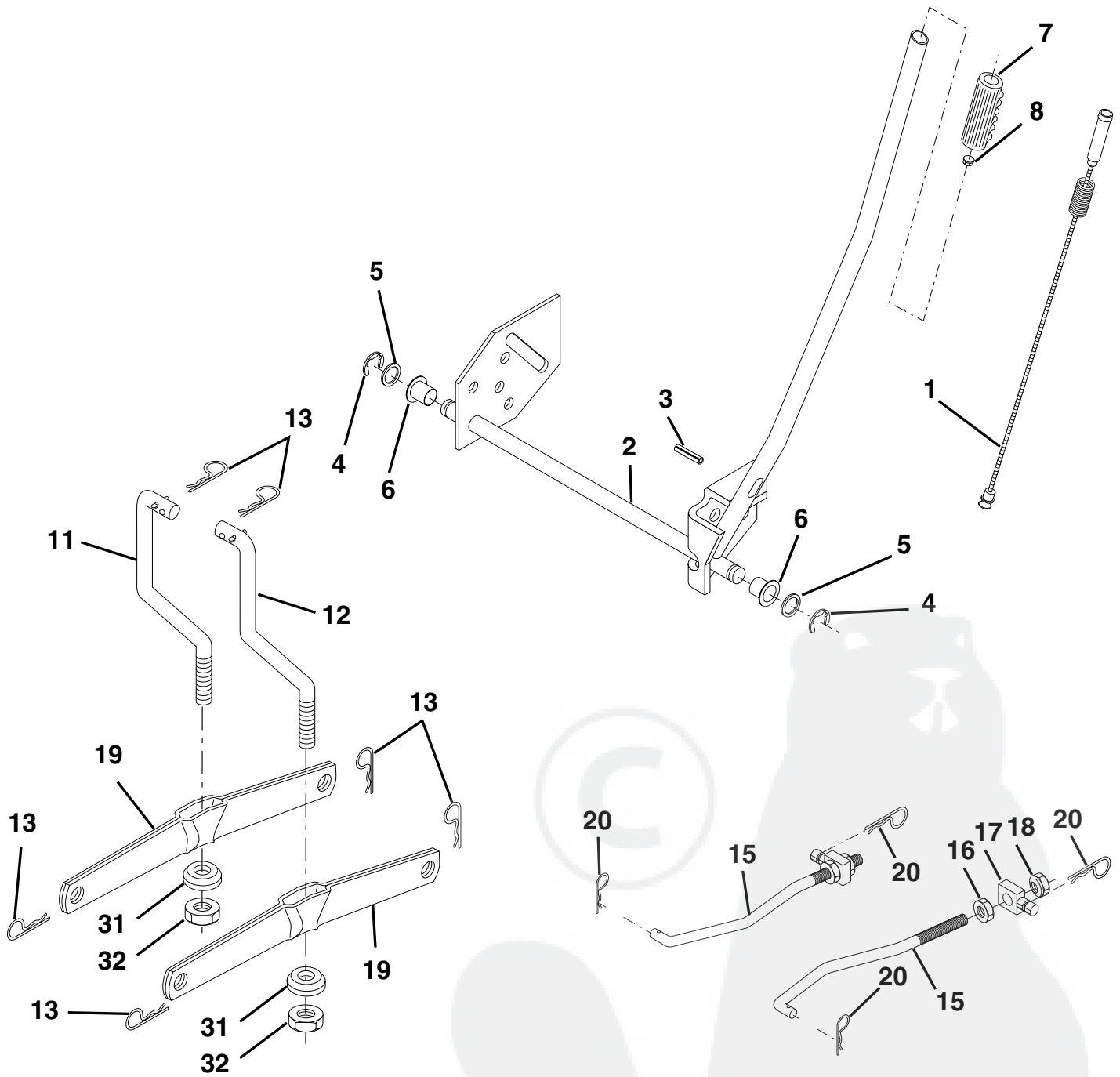
## ENGINE

| KEY NO. | PART NO. | DESCRIPTION   |
|---------|----------|---|
| 1       | 170865   | Control Throt/Ch  |
| 2       | 17720410 | Screw Hex Thd Cut 1/4-20x5/8 T                                    |
| 3       | -----    | Engine B&S Model 289707<br>(Order Parts from Engine Manufacturer) |
| 4       | 137348   | Muffler Exhaust B&S Lt  |
| 13      | 165291   | Gasket 1 313 Id Tin Plated  |
| 14      | 148456   | Tube Drain Oil Easy   |
| 16      | 11050600 | Washer Lock Ext Tooth 3/8   |
| 23      | 169837   | Shield Browning/Debris Guard                                      |
| 29      | 137180   | Arrestor Spark  |
| 31      | 180645   | Tank Fuel 2.00 Fr   |
| 32      | 140527   | Cap Asm Fule Top Vent N/Lany                                      |
| 33      | 123487   | Clamp Hose Blk  |
| 37      | 137040   | Line Fuel 20"   |
| 38      | 148315   | Plug Drain Oil Easy   |
| 40      | 3645J    | Bushing   |
| 41      | 139277   | Stem Tank Fuel  |
| 44      | 17670412 | Screw Hexwsh Thdrol 3/8-16 x 3/4                                  |
| 45      | 17000612 | Screw 3/8-16 x 3/4  |
| 46      | 19091416 | Washer 9/32 X 7/8 X 16ga  |
| 62      | 10040500 | Washer Lock Hvy Hlcl Spr 5/16                                     |
| 66      | 127951   | Stop Throttle 3000 Rpm  |
| 72      | 71070512 | Screw Hexhd Cap 5/16-18 x 3/4                                     |
| 78      | 17060620 | Screw 3/8-16x1-1/4  |
| 81      | 73510400 | Nut Keps Hex 1/4-20 UNC   |
| 112     | 124028X  | Bushing Snap-In Blk.  |

**NOTE:** All component dimensions given in U.S. inches  
1 inch = 25.4 mm

# REPAIR PARTS

TRACTOR- -MODEL NO. REQ11CRDA, PRODUCT 954 56 81-75  
MOWER LIFT





# REPAIR PARTS

TRACTOR- -MODEL NO. REQ11CRDA, PRODUCT 954 56 81-75  
MOWER LIFT

| KEY NO. | PART NO. | DESCRIPTION                       |
|---------|----------|-----------------------------------|
| 1       | 159460   | Washer Asm Inner Spring W/Plunger |
| 2       | 159471   | Shaft Asm. Lift                   |
| 3       | 105767   | Pin Groove                        |
| 4       | 12000002 | E Ring #5133-62                   |
| 5       | 19211621 | Washer 21/32 x 1 x 21 Ga.         |
| 6       | 120183   | Bearing Nylon                     |
| 7       | 109413   | Grip Handle Bicycle               |
| 8       | 124526   | Button Plunger Black              |
| 11      | 165829   | Link Asm Lift L.H.                |
| 12      | 165831   | Link Asm Lift R.H.                |
| 13      | 4939M    | Retainer Spring                   |
| 15      | 173288   | Link Front                        |
| 16      | 73350800 | Nut Jam Hex 1/2-13 Unc            |
| 17      | 175689   | Trunnion Blk Zinc                 |
| 18      | 73800800 | Nut Lock w/Wsh 1/2-13 Unc         |
| 19      | 139868   | Arm Suspension Mower              |
| 20      | 163552   | Retainer Spring                   |
| 31      | 169865   | Bearing, Pvt. Lift.               |
| 32      | 73540600 | Nut Crownlock 3/8-24              |

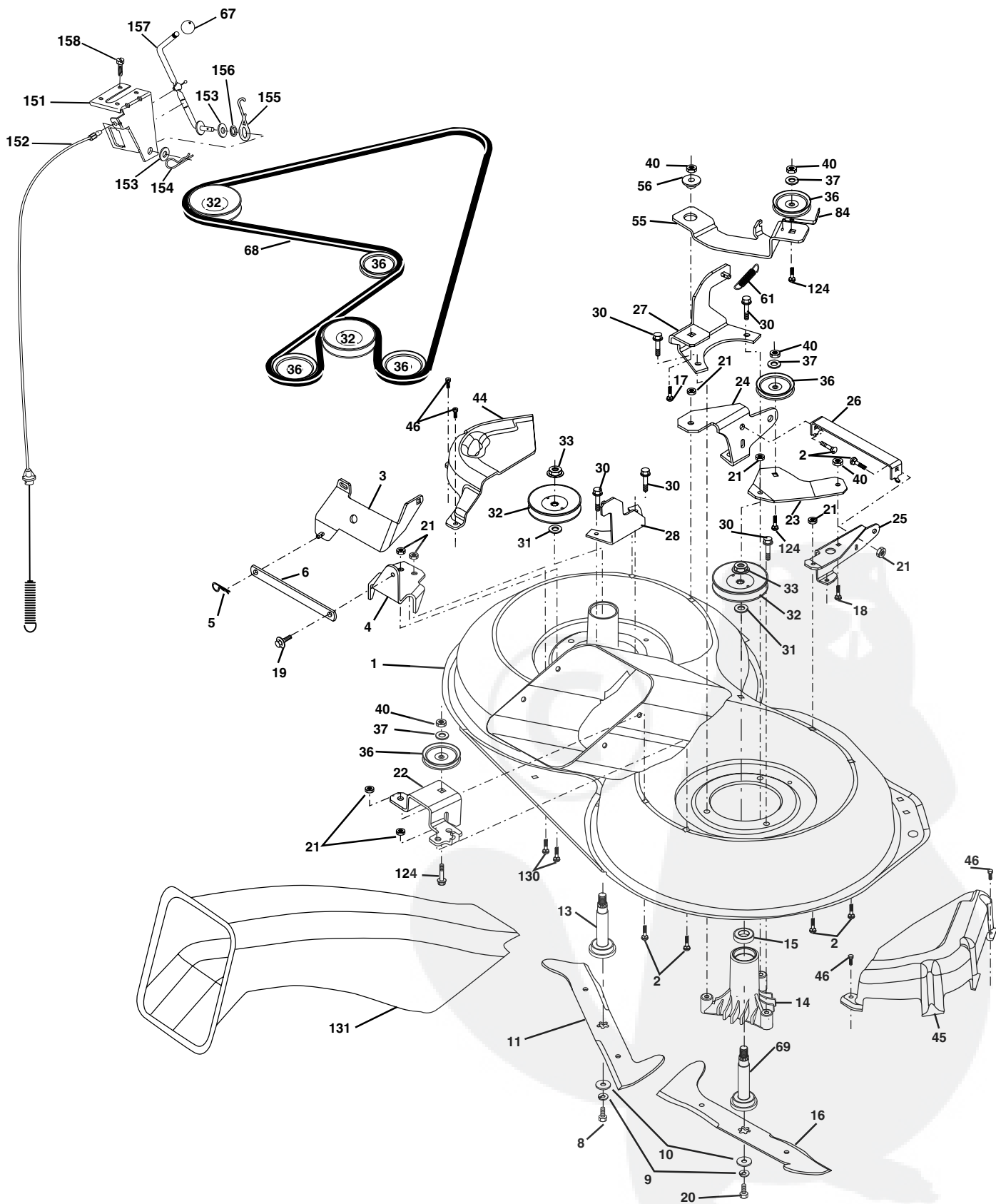
**NOTE:** All component dimensions given in U.S. inches  
1 inch = 25.4 mm



# REPAIR PARTS

TRACTOR- -MODEL NO. REQ11CRDA, PRODUCT 954 56 81-75

MOWER



# REPAIR PARTS

TRACTOR- -MODEL NO. REQ11CRDA, PRODUCT 954 56 81-75

## MOWER

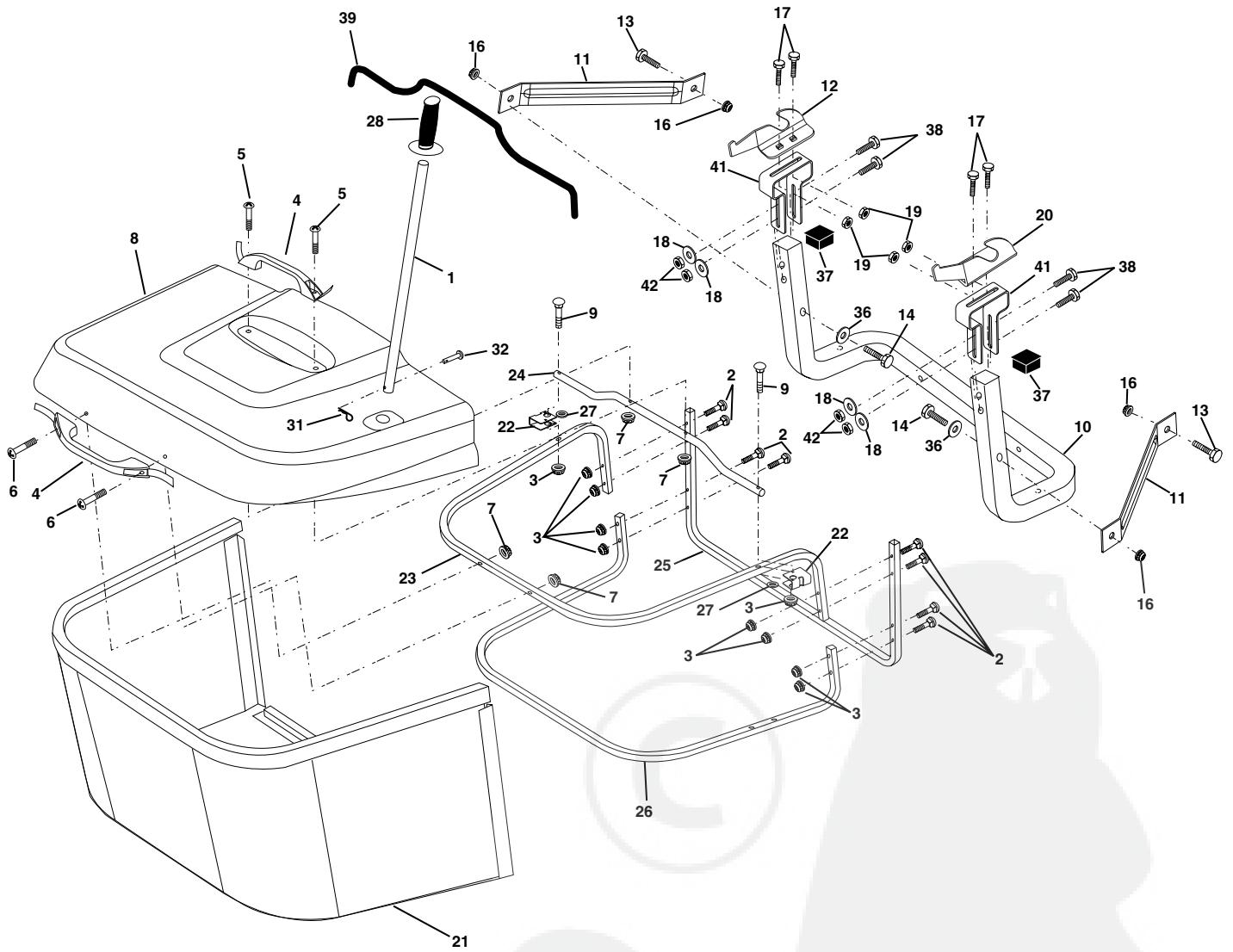
| KEY NO. | PART NO. | DESCRIPTION                       | KEY NO. | PART NO. | DESCRIPTION  |
|---------|----------|-----------------------------------|---------|----------|--|
| 1       | 165552   | Housing Asm. Mower                | 37      | 19131316 | Washer 11/32 x 13/16 x 16 Ga   |
| 2       | 72140506 | Bolt Rdhd Sqnk 5/16-18 Unc x 3/4  | 40      | 73680600 | Nut Crownlock 3/8-16 Unc   |
| 3       | 165569   | Bracket Asm. S-Bar Chass          | 44      | 175538   | Cover Mandrel Lh   |
| 4       | 165558   | Bracket Bar Sway Deck             | 45      | 175539   | Cover Mandrel Rh   |
| 5       | 4939M    | Retainer Spring                   | 46      | 137729   | Screw Thd Roll 1/4-20 x 5/8  |
| 6       | 165557   | Bar Sway                          | 55      | 165445   | Arm Idler  |
| 8       | 850857   | Bolt 3/8-24 x 1.25 Gr8 Patched    | 56      | 165723   | Spacer Retainer PM Mower   |
| 9       | 10030600 | Washer Lock Hvy 3/8 Unplated      | 61      | 165945   | Spring Tension Belt  |
| 10      | 140296   | Washer Hard Blade Mower vented    | 67      | 106932   | Knob Rd 3/8-16 Plstc Thds Blk  |
| 11      | 170037   | Blade 3-1 Lh                      | 68      | 165555   | Hex-Belt 92 Mower 105AA  |
| 13      | 137645   | Shaft Asm. W/Lower Bearing        | 69      | 165482   | Shaft Asm W/Lwr Brg Rh Thd CRD   |
| 14      | 128774   | Housing Mandrel Vented (Machd)    | 84      | 156085   | Keeper Belt Idler  |
| 15      | 110485   | Bearing Ball Mandrel              | 124     | 72110612 | Bolt Carr Sh 3/8-16 x 1-1/2 Gr5  |
| 16      | 170038   | Blade 3-1 Rh                      | 130     | 72110506 | Bolt Rdhdsgnk 5/16-18 Unc x 3/4  |
| 17      | 72140610 | Bolt Carriage 3/8-16 x 1-1/4      | 131     | 165661   | Chute Bagger CRD   |
| 18      | 72110608 | Bolt Rdhd Sqnk 3/8-16 x 1 Gr5     | 151     | 169670   | Bracket Clutch Cable   |
| 19      | 132827   | Bolt Shoulder 5/16-18 Thd Form    | 152     | 176074   | Cable Clutch CRD Service   |
| 20      | 165484   | Bolt 3/8-24 x 1.25 Gr8 Ptch Lhthd | 153     | 169674   | Washer Flat 3/8" Type B  |
| 21      | 73680500 | Nut Crown Lock 5/16-18            | 154     | 169675   | Spring Retainer  |
| 22      | 165243   | Bracket Idler Sprt RR             | 155     | 169671   | Spring Retainer Lvr Cltch Cab  |
| 23      | 165446   | Bracket Idler Sprt RF             | 156     | 169672   | Spacer Clutch Cable  |
| 24      | 165242   | Bracket Suspension LF             | 157     | 169669   | Rod Clutch Cable 3/8"  |
| 25      | 165244   | Bracket Suspension RF             | 158     | 17720410 | Screw Hex Thdcut 1/4-20 x 5/8  |
| 26      | 165237   | Brace Support Susp Frt CRD        | --      | 130794   | Mandrel Assembly (Includes Housing, Shaft and Shaft Hardware Only-Pulley Not Included) |
| 27      | 165568   | Bracket Asm. Susp RR              | --      | 165579   | Mandrel Asm CRD Lh Threads SVC   |
| 28      | 165567   | Bracket Asm. Susp LR              | --      | 181311   | Replacement Mower, Complete  |
| 30      | 173984   | Screw Thd Rolling DOD PT Hex      |         |          |  |
| 31      | 129963   | Washer Spacer Mower Vented        |         |          |  |
| 32      | 153531   | Mandrel Pulleys 36 & 46           |         |          |  |
| 33      | 178342   | Nut Flg Top Lock                  |         |          |  |
| 36      | 146763   | Pulley Idler V-Groove Dim 4.25    |         |          |  |

**NOTE:** All component dimensions given in U.S. inches  
1 inch = 25.4 mm

# REPAIR PARTS

TRACTOR- -MODEL NO. REQ11CRDA, PRODUCT 954 56 81-75

BAGGER



# REPAIR PARTS

TRACTOR- -MODEL NO. REQ11CRDA, PRODUCT 954 56 81-75

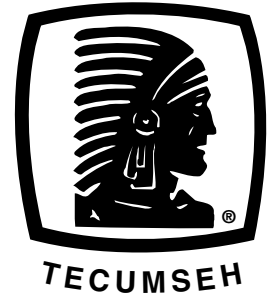
## BAGGER

| KEY NO. | PART NO.   | DESCRIPTION                         |
|---------|------------|-------------------------------------|
| 1       | 165249     | Tube Handle Bagger CRD              |
| 2       | 72140416   | Bolt Carriage 1/4-20 X 2.0 Gr.5     |
| 3       | 123976     | Nut Lock 1/4 Lge Flg Gr. 5 Zinc     |
| 4       | 169916     | Handle Bagger w/Lvrs Gr. 5 Zinc     |
| 5       | 74981024   | Screw Pan Head #10-24 X 1.50 Blk    |
| 6       | 74981032   | Screw Pan Hd                        |
| 7       | 73401000   | Nut Wiz Lock Hex Serr/Hd #10-24     |
| 8       | 169963X505 | Cover Bagger Plastic CRD            |
| 9       | 72140418   | Bolt Carriage 1/4-20 x 2.25d x Gr.5 |
| 10      | 181282     | Tube Support Bagger CRD             |
| 11      | 165719     | Bracket Support Upper Bag CRD       |
| 12      | 169685     | Bracket Horiz. Adj Bagger           |
| 13      | 72110606   | Bolt Rdhd Sht Sqnk 3/8-16 X 3/4     |
| 14      | 72140620   | Bolt Rdhd Sqnk 3/8-16 X 2-1/2 Gr. 5 |
| 16      | 73900600   | Nut Lock Flg 3/8-16 Unc             |
| 17      | 72140506   | Bolt Rdhd Sht Sqnk 5/16-18Unc X 3/4 |
| 18      | 19111216   | Washer 11/32 x 3/4 x 16 Ga.         |
| 19      | 73900500   | Nut Lock Hex Flange 5/16-18         |
| 20      | 169684     | Bracket Horiz Adj Bagger            |
| 21      | 180880     | Bag Asm CRD                         |
| 22      | 165781     | Bracket Side Bagger CRD             |
| 23      | 165782     | Tube Upper Bagger CRD               |
| 24      | 165783     | Tube Pivot Bagger CRD               |
| 25      | 180124     | Tube Front Bagger CRD               |
| 26      | 165785     | Tube Lower Bagger CRD               |
| 27      | 169692     | Bushing Snap Bagger CRD             |
| 28      | 165787     | Grip Handle Black                   |
| 31      | 4497H      | Retainer Spring 1" Zinc/Cad         |
| 32      | 126875     | Rivet Rd Hd Drilled 3/8 Dia         |
| 36      | 19132016   | Washer 13/32 x 1-1/4 x 16 Ga.       |
| 37      | 175401     | Plug Support Bagger CRD             |
| 38      | 72010520   | Bolt 5/16-18 x 2-1/2                |
| 39      | 180985     | Seal 37"                            |
| 41      | 169683     | Bracket Vert Adj Bagger CRD         |
| 42      | 73800500   | Nut Lock Hx w/Ins 5/16-18 Unc       |

**NOTE:** All component dimensions given in U.S. inches  
1 inch = 25.4 mm



# SERVICE POLICY WARRANTY



Issued January 1980  
Revised January 1991

## LIMITED WARRANTIES FOR NEW PEERLESS GEAR POWER TRAIN COMPONENTS

### A. Products Warranted

Peerless Gear and Machine Division of Tecumseh Products Company ("Tecumseh"), subject to the limitations contained below, at its option, repair or replace, without charge for parts or labor only, any part of a new Power Train Component (which as used herein means and includes the transaxle, gear box, transmission, differential and right angle drives, and any part of the Power Train Component), EXCEPT any new Power Train Component incorporated in equipment used for commercial or rental purposes, which is found upon examination by any Tecumseh Authorized Service Outlet or by Tecumseh's factory in Grafton, Wisconsin, to be DEFECTIVE IN MATERIAL AND/OR WORKMANSHIP if received by Tecumseh or a Tecumseh Authorized Service Outlet for such examination within TWO YEARS from the date of sale to the original consumer purchaser of Peerless Series 820, 900, 910, 915, 920, 930 transaxles and Series 1100 angle drive and ONE YEAR for all other Peerless products. New Power Train Components incorporated in equipment used for commercial purposes are warranted in the same manner and to the same extent EXCEPT such Power Train Components are warranted for NINETY (90) DAYS ONLY, and must be received by Tecumseh or by a Tecumseh Authorized Service Outlet for such examination within 90 days from the date of sale to the original purchaser. New Power Train Components Incorporated in equipment used for rental purposes are warranted in the same manner and to the same extent EXCEPT such Power Train Components are warranted for THIRTY (30) DAYS ONLY, and must be received by Tecumseh or a Tecumseh Authorized Service Outlet within 30 days from the date of sale to the original purchaser.

### B. Products And Items Not Warranted

1. Alterations or Modifications of Power Train Components.
2. Accidents, Normal Maintenance, Failure to follow the Original Equipment Manufacturer's Manual.

This warranty covers only parts of new Power Train Components which are found upon examination to be defective in material or workmanship as delivered to the original purchaser. This warranty does not cover defects caused by depreciation or damage caused by normal wear, accidents, improper maintenance, improper use or abuse of the product, failure to follow the instructions contained in an Instruction Manual for the operation of the Power Train Component and parts. The cost of normal maintenance and replacement of service items which are not defective shall be paid for by the original purchaser.

### C. Securing Warranty Service

Warranty service can be arranged for by contacting either a Tecumseh Authorized Service Outlet (any Tecumseh Registered Service Dealer, Tecumseh Authorized Service Distributor, or Tecumseh Central Warehouse Distributor) or by contacting Tecumseh, c/o Service Manager, Engine and Transmission Group Service Division, 900 North Street, Grafton, Wisconsin 53024. Warranty service can only be performed by a Tecumseh Authorized Service Outlet or by Tecumseh at its factory in Grafton, Wisconsin. At the time of requesting warranty service, evidence must be presented of the date of sale to the original purchaser. The purchaser shall pay any charges for making service calls and/or for transporting the product to and from the place where the inspection and/or warranty work is performed. The purchaser shall be responsible for any damage or loss incurred in connection with the transportation of Power Train Components and/or part(s) of the Power Train Components submitted for inspection and/or warranty work.

### D. Limitation of Damages and Implied Warranties

The foregoing EXPRESSED WARRANTY IS IN LIEU OF ALL OTHER EXPRESS WARRANTIES. Neither Tecumseh nor any of its affiliates makes any warranties, representations or promises, written or oral, as to the quality of the Power Train Component or any of its parts, other than as set forth herein.

ANY IMPLIED WARRANTY OF MERCHANTABILITY OR FITNESS FOR A PARTICULAR PURPOSE, TO THE EXTENT THAT EITHER MAY APPLY TO ANY PART(S) OF POWER TRAIN COMPONENTS, SHALL BE LIMITED IN DURATION TO THE PERIODS OF THE EXPRESSED WARRANTIES DEFINED IN PARAGRAPH A HEREOF. IN NO EVENT WILL TECUMSEH BE LIABLE FOR ANY INCIDENTAL, CONSEQUENTIAL OR SPECIAL DAMAGES AND/OR EXPENSES. Some states do not allow limitations on how long an implied warranty lasts or the exclusion or limitation of incidental or consequential damages, so the above limitation(s) or exclusion(s) may not apply to you. This warranty gives you specific legal rights and you may also have other legal rights which vary from state to state.

### E. No Dealer Warranty

Tecumseh neither assumes nor authorizes any other person, natural or corporate, to assume for Tecumseh any other obligations or liabilities in connection with or with respect to any part(s) of a Power Train Component. The seller or dealer of part(s) of a Power Train Component has no authority, whatsoever, to make any representations or promises on behalf of Tecumseh or to modify the terms or limitations of Tecumseh's warranty in any way.

---

# SERVICE NOTES

---





**Rally**