

R REPAIR PARTS

Lawn Rider

Model No. YE1036A

- 91

Yard Pro

127673 11.13.90
Printed in U.S.A.

HOW TO USE THIS MANUAL

This manual is designed to provide the customer with a means to identify the parts on his/her tractor when ordering repair parts. The illustrations may or may not represent the actual assemblies; therefore, it is not recommended to use this manual as a guide to assemble or disassemble the tractor. Some hardware and parts are drawn larger in order to more readily identify them.

Each tractor has its own model number.

The model number for your tractor can be found on the fender under the seat.

When ordering parts, always give the following information:

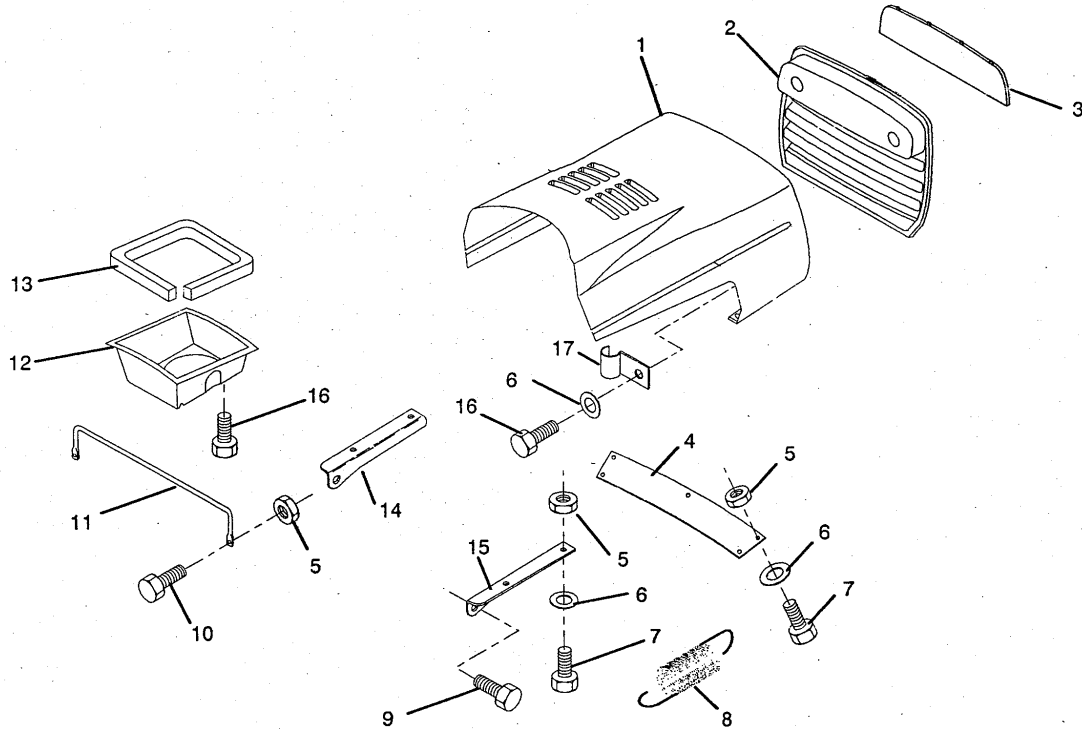
- Product – "Lawn Rider"
- Model Number – "YE1036A"
- Part Number
- Part Description

TABLE OF CONTENTS

DASH	6
ENGINE / THROTTLE	11
ELECTRICAL	19
FENDER / CHASSIS	4
FRONT AXLE	9
GROUND DRIVE	12
HOOD	3
MOWER LIFT LEVER	14
MOWER DECK	15 – 18
BRAKE / REAR MOWER LIFT ASM.	10
SEAT	5
SECTOR GEAR / AXLE SUPPORT	8
STEERING WHEEL	7
TRANSAXLE	13

ILLUSTRATED PARTS BREAKDOWN

HOOD



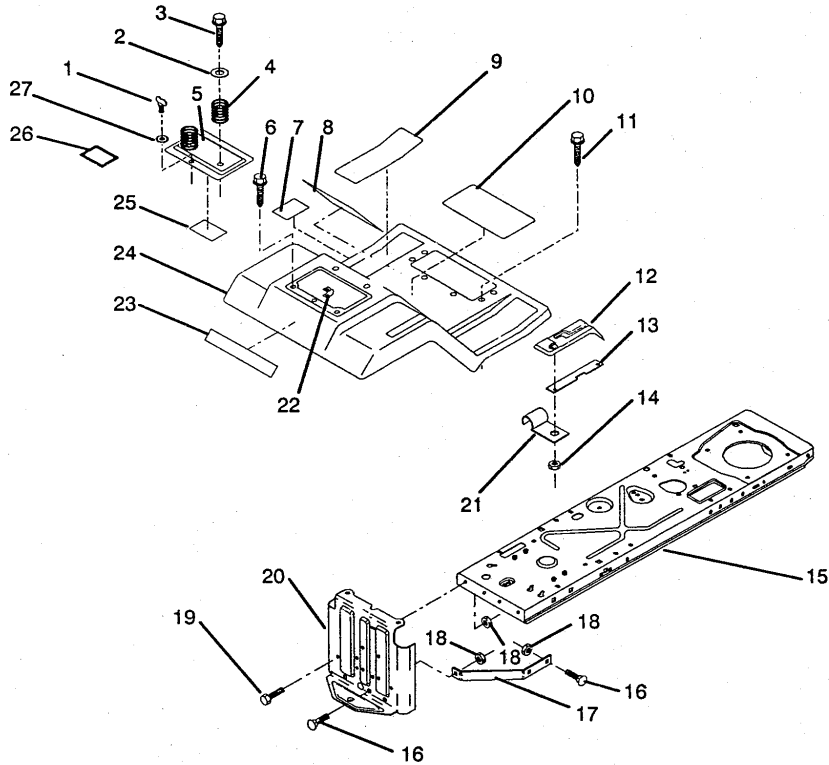
KEY NO.	PART NO.	DESCRIPTION	KEY NO.	PART NO.	DESCRIPTION
1	122032X394	Hood	13	120537X	Strip, Foam
2	127029X	Grill	14	122548X	Bracket, Hood, L.H.
3	122035X	Lens	15	122549X	Bracket, Hood, R.H.
4	122550X423	Strap, Grill	16	17411310	Screw, Fin. Hex
5	73510400	Nut, Hex, Keps 1/4-20 UNC			#13-16 Hi-Lo x 5/8
6	19091016	Washer, 9/32 x 5/8 x 16 Gauge	17	2751R	Clip, Fuel Line
7	74780410	Bolt, Hex Fin. 1/4-20 UNC x 5/8 Grade 5	-	126860X	Decal, Light Box
8	124657X	Extension, Spring	-	122036X	Decal, Stripe, Hood, L.H.
9	126675X	Bolt, Shoulder, Thread Forming	-	122037X	Decal, Stripe, Hood, R.H.
10	74780412	Bolt, Hex Fin. 1/4-20 x 3/4 Gr. 5	-	124603X	Decal, Side Panel
11	123693X	Brace, Hood			
12	123840X	Duct, Air			

NOTE: All component dimensions given in U.S. inches
1 inch = 25.4 mm

HARDWARE SHOWN LARGER FOR EASIER IDENTIFICATION

ILLUSTRATED PARTS BREAKDOWN

FENDER / CHASSIS



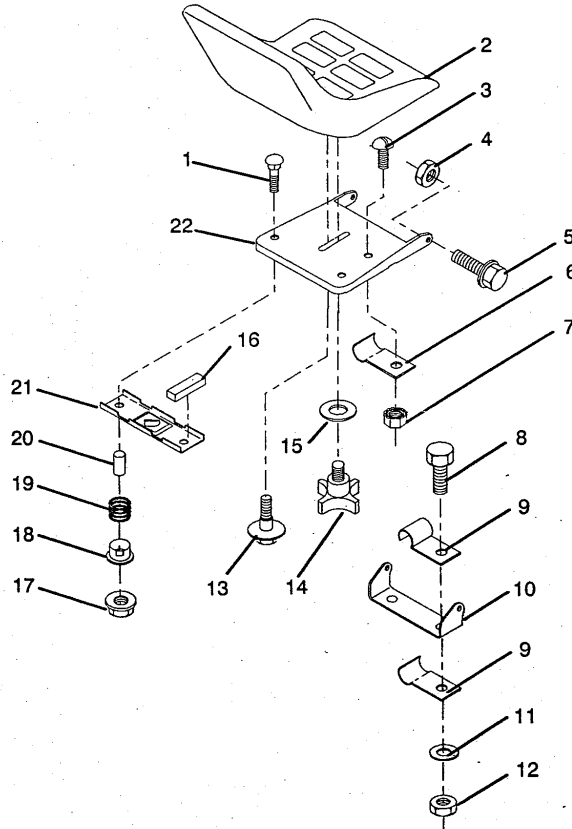
KEY NO.	PART NO.	DESCRIPTION	KEY NO.	PART NO.	DESCRIPTION
1	123650X	Stud, 1/4 Turn	16	72140506	Bolt, Carriage
2	19132012	Washer 13/32 x 1- 1/4 x 12 Ga.	17	123379X	5/16-18 UNC x 3/4
3	17490612	Screw, Hex Wsh. Thd. Roll.	18	73680500	Brace, Drawbar
4	124181X	3/8-16 x 3/4	19	74760512	Nut, Crownlock 5/16-18
5	122008X423	Spring, Compression, Seat	20	121904X	Bolt, Hex Head
6	17490508	Door, Fender	21	121904X	5/16-18 UNC x 3/4
7	123408X	Screw, Hex Wsh. Thd. Roll.	22	105839X	Drawbar
8	120822X	5/16-18 x 1/2	23	123689X	Clip, Insulated
9	124144X	Decal, Ground Drive Schematic	24	124332X423	Receptacle, 1/4 Turn
10	123637X	Decal, Caution	25	121549X	Decal, Fender
11	17490512	Pad, Footrest	26	125690X	Fender/Footrest
12	126994X	Decal, Operating Instructions	27	105838X	Decal, Battery Caution
13	124307X	Screw, Hex Wsh. Thd. Roll.			Retainer 1/4 Turn
14	124346X	5/16-18 x 3/4			
15	123645X	Console, Shift Control			
		Bar, Shift Lock.			
		Palnut			
		Assembly, Frame			

NOTE: All component dimensions given in U.S. inches
1 inch = 25.4 mm

HARDWARE SHOWN LARGER FOR EASIER IDENTIFICATION

ILLUSTRATED PARTS BREAKDOWN

SEAT



KEY NO.	PART NO.	DESCRIPTION
1	72170410	Bolt, Carriage 1/4-20 x 1-1/4
2	127422X	Seat
3	74641008	Screw, Slotted Pan Head #10-32 x 1/2
4	73680500	Nut, Crownlock 5/16-18
5	105529X	Bolt, Shoulder 5/16-18 UNC
6	4171R	Clip, Insulated
7	73951000	Nut, Keps #10-32 UNF
8	74760612	Bolt, Fin. Hex 3/8-16 UNC x 3/4
9	126471X	Clip, Insulated
10	126656X	Bracket, Pivot, Seat
11	19131210	Washer 13/32 x 3/4 x 10 Ga.
12	73680600	Nut, Crownlock 3/8-16 UNC

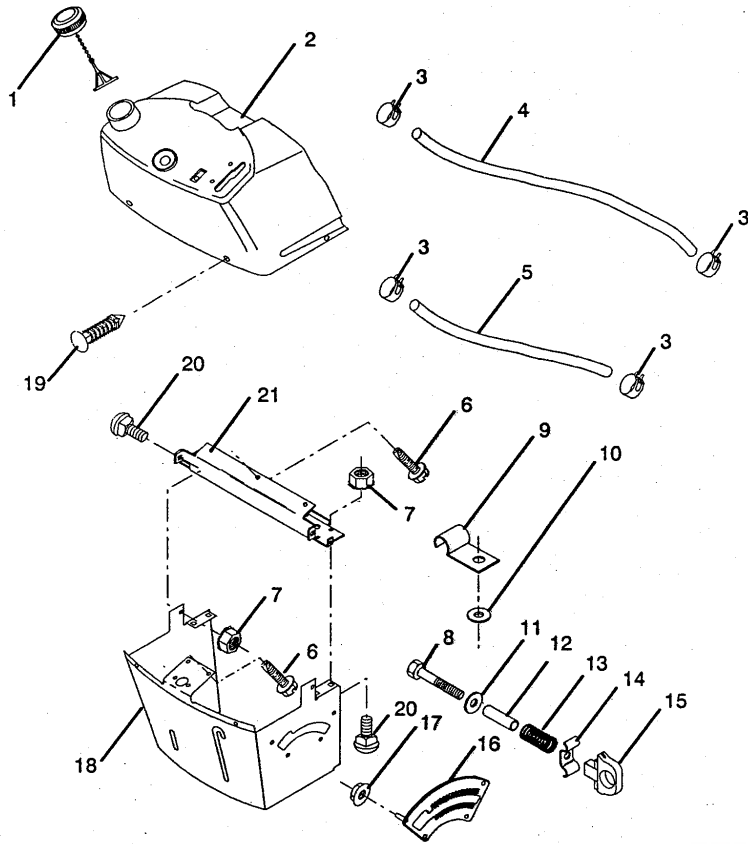
KEY NO.	PART NO.	DESCRIPTION
13	127018X	Bolt, Shoulder
14	120068X	Knob, Seat 1/2"
15	19171912	Washer 17/32 x 1-3/16 x 12 Ga.
16	121251X	Strip, Foam
17	123976X	Nut, Hex, Large, Flange Lock
18	121248X	Bushing, Snap
19	121250X	Spring, Compression
20	121249X	Spacer, Split 28 Id. x .88 Large
21	121246X	Bracket, Switch, Mounting
22	124294X	Pan, Seat

NOTE: All component dimensions given in U.S. inches
1 inch = 25.4 mm

HARDWARE SHOWN LARGER FOR EASIER IDENTIFICATION

ILLUSTRATED PARTS BREAKDOWN

DASH



KEY NO.	PART NO.	DESCRIPTION
1	122015X	Cap, Fuel
2	124540X	Assembly, Dash & Fuel Tank
3	123487X	Clamp, Hose
4	8548R	Line, Fuel
5	8544R	Line, Fuel
6	17111312	Screw, Hex Washer Head
7	73510400	Nut, Hex, Keps 1/4-20
8	74760432	Bolt, Fin. Hex 1/4-20 x 2
9	2751R	Clip, Fuel line
10	19091216	Washer 9/32 x 3/4 x 16 Gauge
11	19111116	Washer 11/32 x 11/16 x 16 Ga.
12	123494X	Spacer, Split

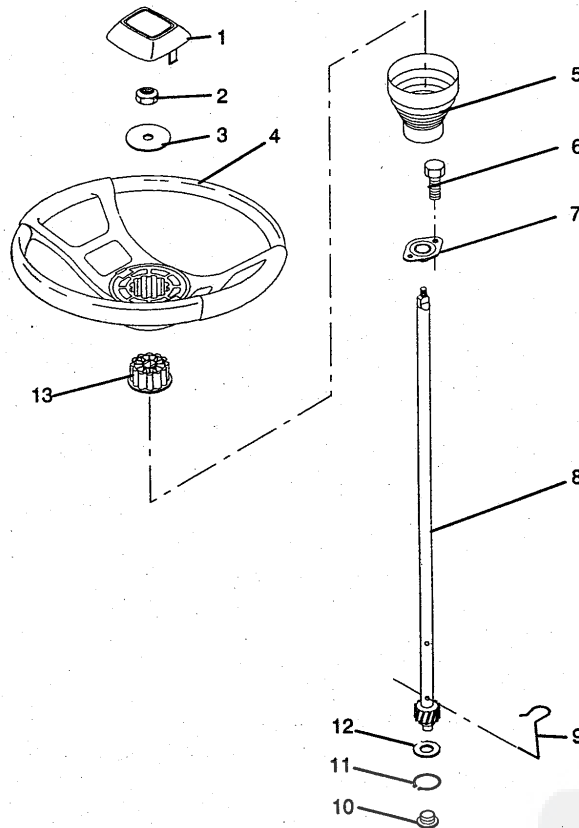
KEY NO.	PART NO.	DESCRIPTION
13	2876H	Spring
14	123493X	Clip, Height Adjustment
15	126115X	Knob, Height Stop
16	122023X	Adjustment, Quadrant Height
17	124346X	Nut, Self Threading 3/16-18
18	121789X	Support, Dash
19	122017X	Snap, Plastic
20	72110404	Bolt, Carriage 1/4-20 x 1/2 Gr.5
21	122016X	Brace, Cross

NOTE: All component dimensions given in U.S. inches
1 inch = 25.4 mm

HARDWARE SHOWN LARGER FOR EASIER IDENTIFICATION

ILLUSTRATED PARTS BREAKDOWN

STEERING WHEEL



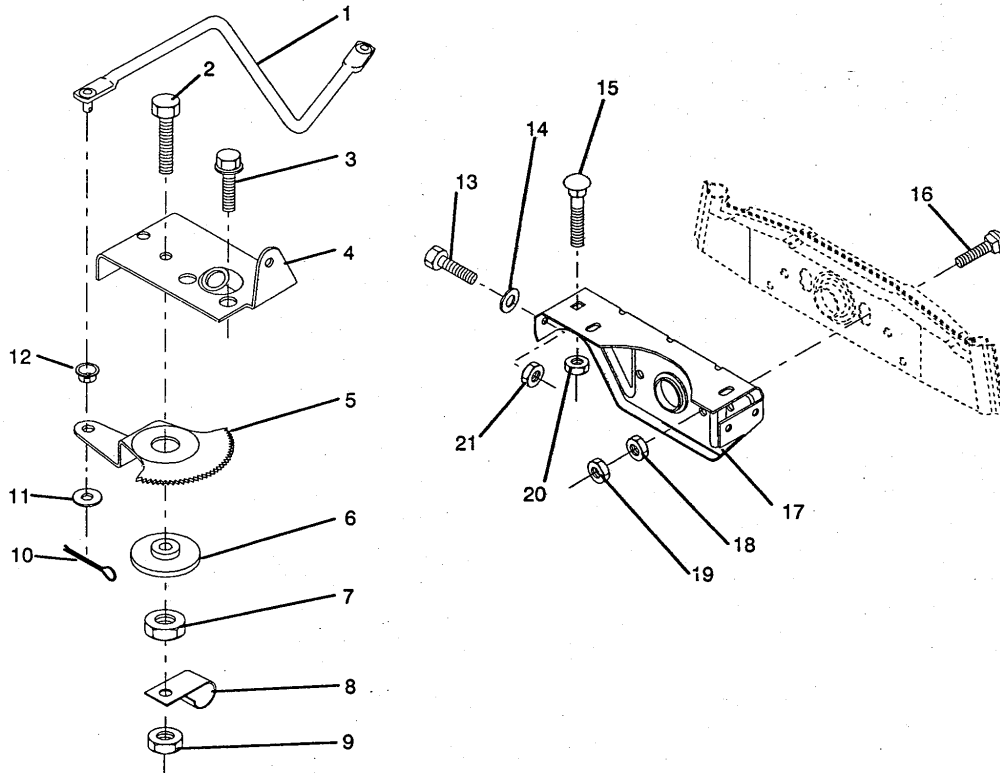
KEY NO.	PART NO.	DESCRIPTION	KEY NO.	PART NO.	DESCRIPTION
1	121584X	Insert, Steering Wheel	8	123651X	Shaft, Steering
2	7810H	Locknut 3/8-24 UNF	9	124210X	Clip, Steering
3	19133808	Washer 13/32 x 2-3/8 x 8 Gauge	10	123438X	Bushing, Lower, Steering
4	121472X	Wheel, Steering	11	12000045	Ring, Retaining
5	121897X	Sleeve, Steering	12	19211616	Washer 21/32 x 1 x 16 Gauge
6	17431008	Screw, Hex, SLFTP #10-16 x 1/2 TY-B	13	104820X	Adaptor, Wheel, Steering
7	102803X	Bushing, Steering			

NOTE: All component dimensions given in U.S. inches
1 inch = 25.4 mm

HARDWARE SHOWN LARGER FOR EASIER IDENTIFICATION

ILLUSTRATED PARTS BREAKDOWN

SECTOR GEAR / AXLE SUPPORT



KEY NO.	PART NO.	DESCRIPTION
1	124093X	Link, Drag
2	74780828	Bolt, Fin. Hex 1/2-13 x 1 3/4
3	17490508	Screw, Hex, Thd. Roll. 5/16-18 x 1/2
4	121925X	Plate, Steering Support
5	121926X	Gear, Sector
6	121927X	Bushing
7	73030800	Nut, Heavy, Hex, Top Lock 1/2-13 UNC
8	126472X	Clip, Insulated
9	73680800	Nut, Crownlock 3/8-16
10	76020412	Pin, Cotter 1/8 x 3/4
11	19131316	Washer 13/32 x 13/16 x 16 Ga.

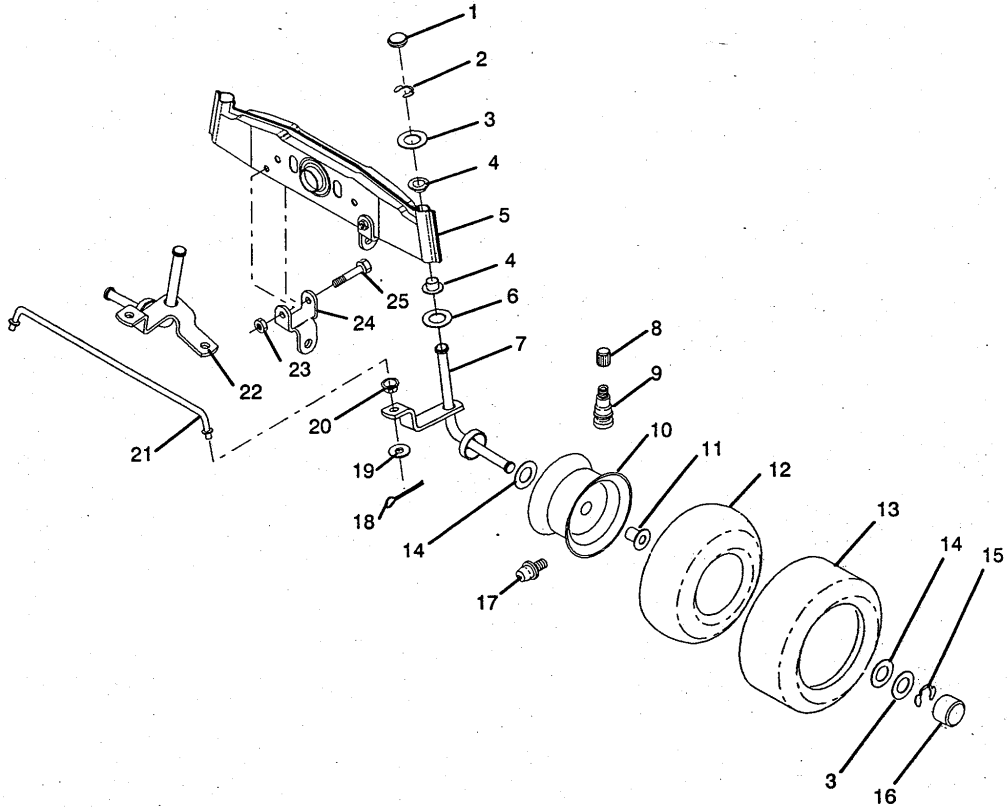
KEY NO.	PART NO.	DESCRIPTION
12	126847X	Bushing
13	74760512	Bolt, Hex Hd. 5/16-18 UNC x 3/4
14	19111416	Washer 11/32 x 7/8 x 16 Gauge
15	72110606	Bolt, Carriage 3/8-16 UNC x 3/4
16	72140622	Bolt, Carriage
17	121912X	Support, Front Axle
18	73220600	Nut, Fin. Hex 3/8-16 UNC
19	73930600	Nut, Centerlock 3/8-16 UNC
20	73680600	Nut, Crownlock 3/8-16 UNC
21	73680500	Nut, Crownlock 5/16-18

NOTE: All component dimensions given in U.S. inches
1 inch = 25.4 mm

HARDWARE SHOWN LARGER FOR EASIER IDENTIFICATION

ILLUSTRATED PARTS BREAKDOWN

FRONT AXLE



KEY NO.	PART NO.	DESCRIPTION
1	121232X	Cap, Spindle
2	12000029	Ring, Clip
3	121748X	Washer 25/32 x 1-5/8 x 16 Ga.
4	121922X	Nyliner
5	121914X	Axle, Front
6	6266H	Bearing, Thrust
7	121919X	Spindle, R.H. Assembly
8	59192	Cap, Valve
9	65139	Stem, Valve
10	122394X361	Rim
11	9040H	Bearing, Flange
12	59904	Tube
13	124142X	Tire, Front
14	121749X	Washer 25/32 x 1-1/4 x 16 Ga.
15	12000029	Ring, Clip

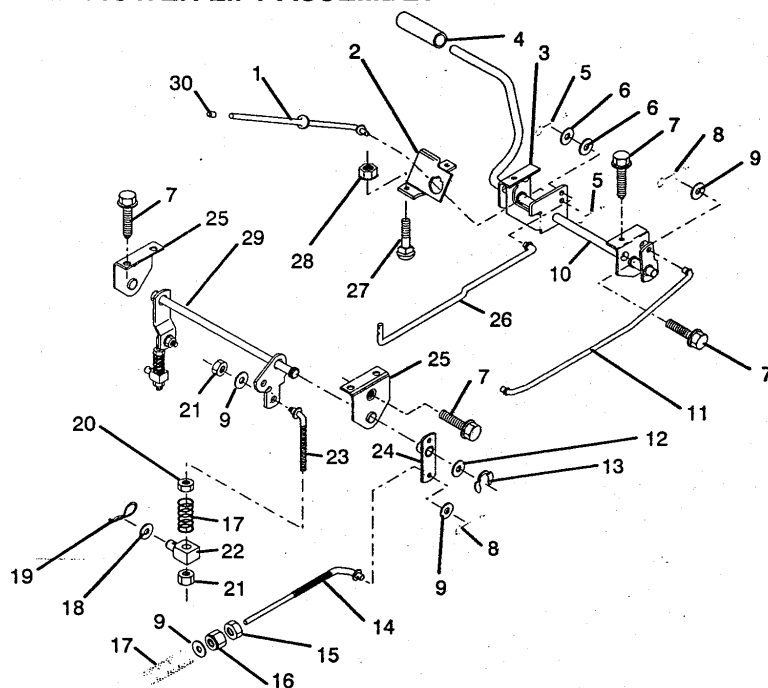
KEY NO.	PART NO.	DESCRIPTION
16	104757X	Cap, Hub
17	278H	Fitting, Grease
18	76020412	Pin, Cotter 1/8 x 3/4
19	19131316	Washer 13/32 x 13/16 x 16 Ga.
20	126847X	Bushing
21	121924X	Rod, Tie
22	121916X	Spindle, Assembly, L.H.
23	73680500	Nut, Crownlock 5/16-18
24	121915X	Bracket, Front Stabilizer Link
25	74760540	Bolt, Hex, Fin. 5/16-18 UNC x 2-1/2

NOTE: All component dimensions given in U.S. inches
1 inch = 25.4 mm

HARDWARE SHOWN LARGER FOR EASIER IDENTIFICATION

ILLUSTRATED PARTS BREAKDOWN

BRAKE / REAR MOWER LIFT ASSEMBLY



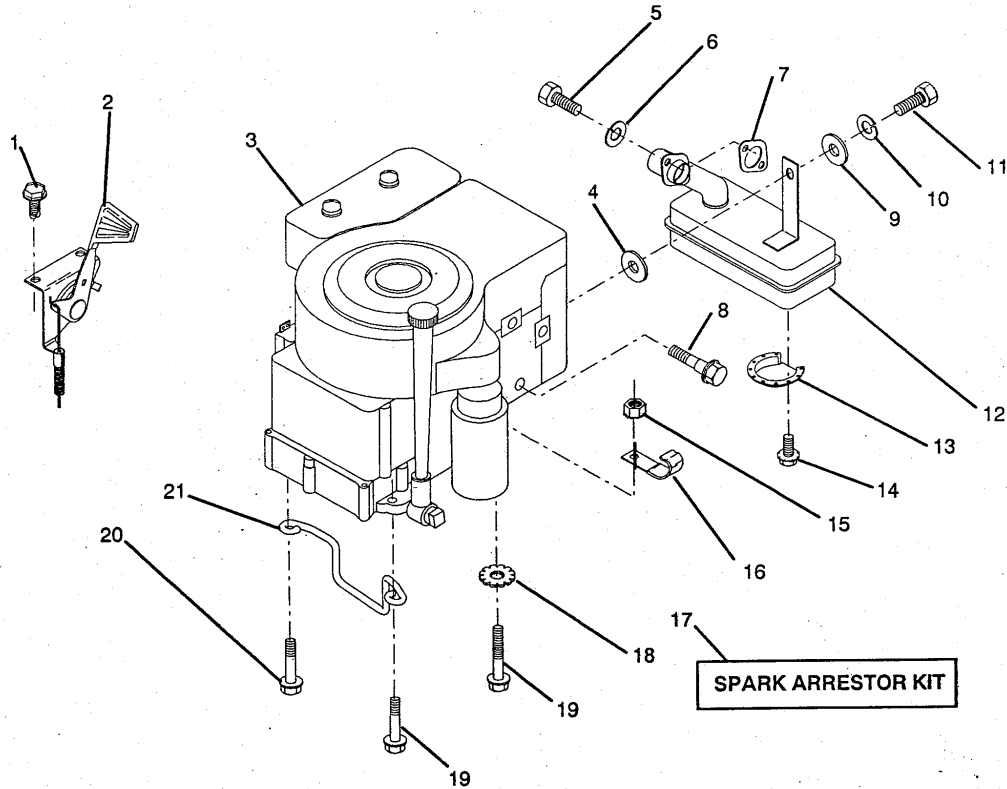
KEY NO.	PART NO.	DESCRIPTION	KEY NO.	PART NO.	DESCRIPTION
1	123436X	Rod, Parking Brake	17	106888X	Spring, Brake Rod
2	123437X	Bracket, Parking Brake	18	19132012	Washer 13/32 x 1-1/4 x 12 Ga.
3	122504X	Bracket, Clutch Pedal, L.H.	19	4921H	Spring, Retainer
4	8883R	Cover, Pedal	20	73930600	Nut, Centerlock 3/8-16 UNC
5	76020312	Pin, Cotter	21	73680600	Nut, Crownlock 3/8-16 UNC
6	19131016	Washer 13/32 x 5/8 x 16 Gauge	22	106204X	Trunnion, Lift
7	17490508	Screw, Hex, Thd. Roll. 5/16-18 x 1/2	23	123672X	Link, Threaded
8	76020412	Pin, Cotter	24	123641X	Assembly, Brake Pivot Arm
9	19131316	Washer 13/32 x 13/16 x 16 Ga.	25	121978X	Bracket, Lift Shaft
10	124145X	Assembly, Clutch/Brake Pedal	26	123394X	Rod, Clutch
11	123543X	Rod, Front Brake	27	72110506	Bolt, Carriage 5/16-18 UNC x 3/4
12	19251816	Washer 25/32 x 1-1/8 x 16 Ga.	28	73510500	Nut, Keps 5/16-18 UNC
13	12000034	Ring, Clip	29	123547X	Assembly, Rear Mower Lift
14	126759X	Rod, Rear Brake	30	71673	Cap, Plunger
15	73350600	Nut, Hex Jam 3/8-16 UNC			
16	73800600	Locknut, Hex with Washer Insert 3/8-16 UNC			

NOTE: All component dimensions given in U.S. inches
1 inch = 25.4 mm

HARDWARE SHOWN LARGER FOR EASIER IDENTIFICATION

ILLUSTRATED PARTS BREAKDOWN

ENGINE / THROTTLE



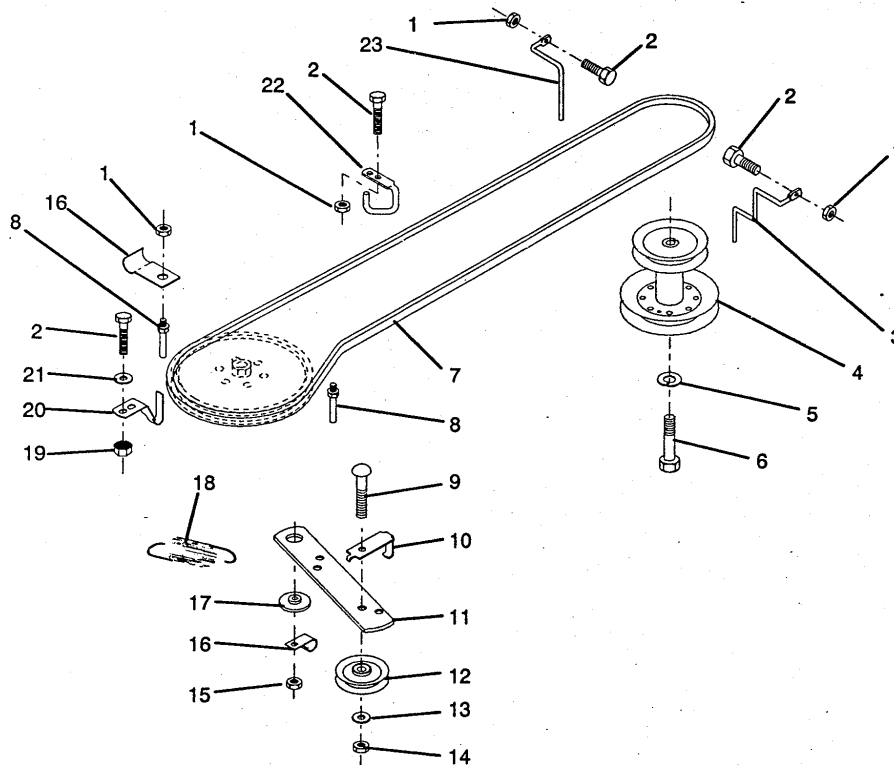
KEY NO.	PART NO.	DESCRIPTION	KEY NO.	PART NO.	DESCRIPTION
1	17720408	Screw, Hex Thd. Cut 1/4-20 x 1/2	13	101326L	Deflector, Muffler
2	125985X	Control, Throttle	14	17030808	Screw, Spiderlock Hex Head #8 x 1/2 ABTPS
3	121797X	Engine, Briggs and Stratton, Model Number 255707, Type Number 0122-01	15	73510600	Nut, Keps 3/8-16
4	102933X	Spacer	16	2751R	Clip, Fuel Line
5	71070512	Screw, Hex Hd. Cap 5/16-18 x 3/4	17	121851X	Arrestor, Spark (optional equipment)
6	10040500	Washer, Lock, Heavy Helical Spring 5/16	18	11050600	Lockwasher, External Tooth 3/8
7	125593X	Gasket, Exhaust	19	17490632	Screw, Hex Washer Head Thd. Roll. 3/8-16 x 2
8	121094X	Bolt, Shoulder 5/16	20	17490624	Screw, Hex Washer Head, Thd. Roll. 3/8-16 x 1-1/2
9	19101216	Washer 5/16 x 3/4 x 16 Gauge	21	126636X	Keeper, Ground Drive Belt
10	10040400	Washer, Lock, Heavy Helical Spring 1/4	-	121120X	Decal, Engine
11	74780420	Bolt, Hex Fin. 1/4-20 UNC x 1-1/4			
12	123676X	Muffler			

NOTE: All component dimensions given in U.S. inches
1 inch = 25.4 mm

HARDWARE SHOWN LARGER FOR EASIER IDENTIFICATION

ILLUSTRATED PARTS BREAKDOWN

GROUND DRIVE



KEY NO.	PART NO.	DESCRIPTION
1	73680500	Nut, Crownlock 5/16-18
2	74760512	Bolt, Hex Hd. 5/16-18 UNC x 3/4
3	123448X	Keeper, Mower Drive Belt, Engine, R.H.
4	123400X	Pulley, Engine
5	10040700	Washer, Lock, Heavy Helical Spring 7/16
6	71130720	Bolt, Fin. Hex 7/16-20 UNF x 1-1/4 Grade 8
7	124525X	Traction, V-Belt Drive
8	123405X	Keeper, T/A Ground Drive Belt
9	72140612	Bolt, Rdhd. 3/8-16 UNC x 1-1/2
10	123396X	Keeper, Ground Drive Belt, Idler
11	123395X	Arm, Ground Drive Clutch
12	4859J	Idler, Flat

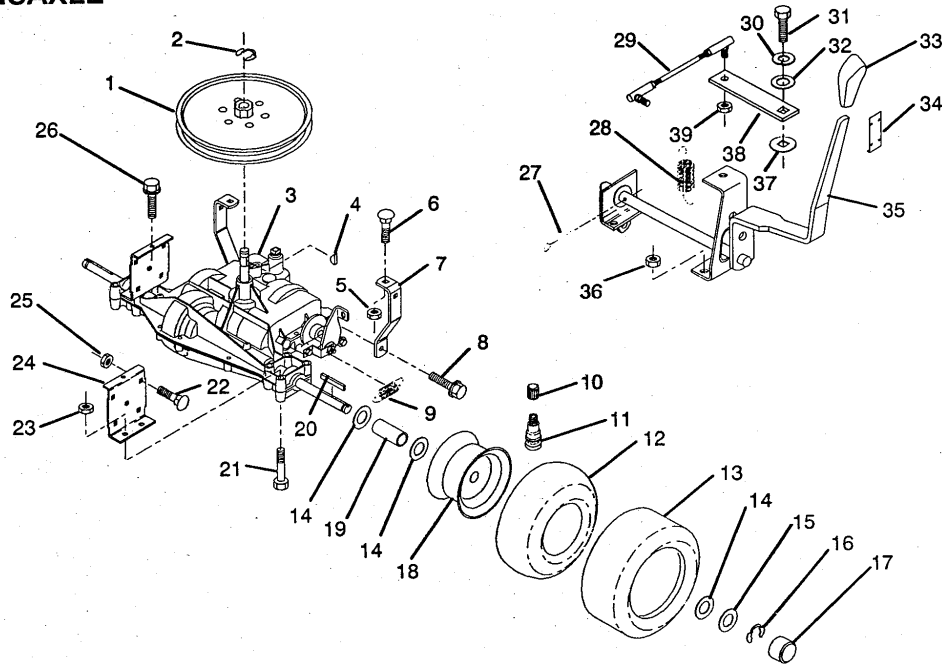
KEY NO.	PART NO.	DESCRIPTION
13	19131316	Washer 13/32 x 13/16 x 16 Ga.
14	73930600	Nut, Centerlock 3/8-16 UNC
15	73680600	Nut, Crownlock 3/8-16 UNC
16	126471X	Clip, Insulated
17	122052X	Spacer, Retainer
18	123397X	Spring, Extension
19	73510500	Nut, Keps 5/16-18 UNC
20	123891X	Keeper, T/A Ground Drive Belt
21	19111016	Washer 11/32 x 5/8 x 16 Gauge
22	123404X	Keeper, Frame Ground Drive Belt
23	123402X	Keeper, Engine Mower Drive Belt, L.H.

NOTE: All component dimensions given in U.S. inches
1 inch = 25.4 mm

HARDWARE SHOWN LARGER FOR EASIER IDENTIFICATION

ILLUSTRATED PARTS BREAKDOWN

TRANSAXLE



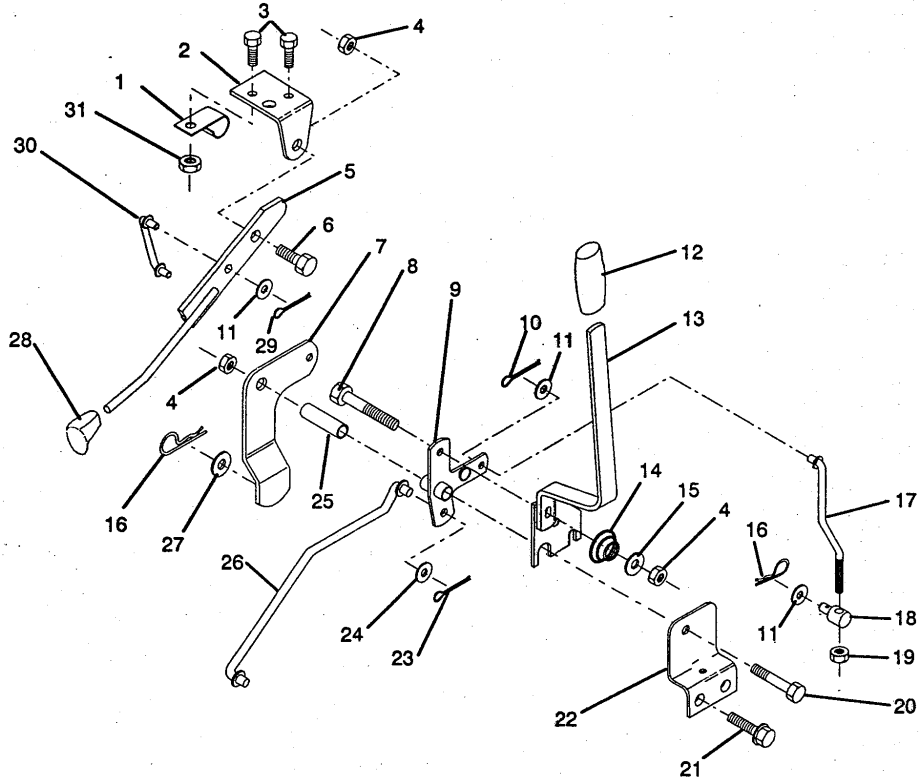
KEY NO.	PART NO.	DESCRIPTION	KEY NO.	PART NO.	DESCRIPTION
1	123385X	Pulley	23	73680600	5/16-18 UNC x 3/4 Nut, Crownlock 3/8-16
2	12000028	Ring, Retainer	24	123377X	Bracket, Transaxle
3	123483X	Transaxle, Foote, 5 Speed,	25	73680500	Nut, Crownlock 5/16-18
4	2228M	Key, Woodruff #9	26	17490512	Screw 5/16-18 x 3/4
5	73680500	Nut, Crownlock 5/16-18	27	76020416	Pin, Cotter 1/8 X 1
6	72140506	Bolt, Carriage 5/16-18 UNC x 3/4	28	123393X	Spring, Extension
7	123378X	Strap, Torque	29	123632X	Link, Shift
8	17490508	Screw, Hex, Threaded, Roll. 5/16-18 x 1/2	30	10040400	Washer, Lock, Heavy Helical Spring 1/4
9	110422X	Spring, Brake	31	71040412	Bolt, Fin, Hex 1/4-28 UNF x 3/4 Grade 8
10	59192	Cap, Valve	32	19091210	Washer 9/32 x 3/4 x 10 Ga.
11	65139	Stem, Valve	33	122011X	Knob, Shift Control
12	8134H	Tube	34	123692X	Knob, Retainer
13	124143X	Tire, Rear	35	125976X	Assembly, Shift Handle
14	121749X	Washer 25/32 x 1-1/4 x 16 Ga.	36	73510500	Nut, Keps 5/16-18
15	121748X	Washer 25/32 x 1-5/8 x 16 Ga.	37	105701X	Washer, Shift Plate
16	12000001	E-Ring	38	123484X	Arm, Shift
17	104757X	Hub, Cap	39	73810500	Nut, Hex, Nylon 5/16-24
18	123412X361	Rim			
19	123409X	Spacer			
20	123583X	Key, Square			
21	74760644	Bolt, Fin, Hex 3/8-16 x 2-3/4			
22	72140506	Bolt, Carriage			

NOTE: All component dimensions given in U.S. inches
1 inch = 25.4 mm

HARDWARE SHOWN LARGER FOR EASIER IDENTIFICATION

ILLUSTRATED PARTS BREAKDOWN

MOWER LIFT LEVER



KEY NO.	PART NO.	DESCRIPTION
1	126470X	Clip, Insulated
2	122018X	Bracket, Mower Clutch
3	74780408	Bolt, Fin. Hex 1/4-20 UNC x 1/2 Grade 5
4	73680600	Nut, Crownlock 3/8-16 UNC
5	123417X	Assembly, Clutch Lever
6	106451X	Bolt, Shoulder
7	123491X	Assembly, Mower Clutch Arm
8	74760636	Bolt, Hex 3/8-16 UNC x 2-1/4
9	121930X	Assembly, Bellcrank Lift
10	76020412	Pin, Cotter 1/8 x 3/4
11	19131316	Washer 13/32 x 13/16 x 16 Ga.
12	122027X	Grip, Handle
13	127028	Assembly, Lift Handle
14	123496X	Spring, Compression
15	19131212	Washer 13/32 x 3/4 x 12 Gauge
16	4921H	Retainer, Spring
17	123654X	Link, Front Lift
18	7078J	Trunnion, Threaded 3/8-16

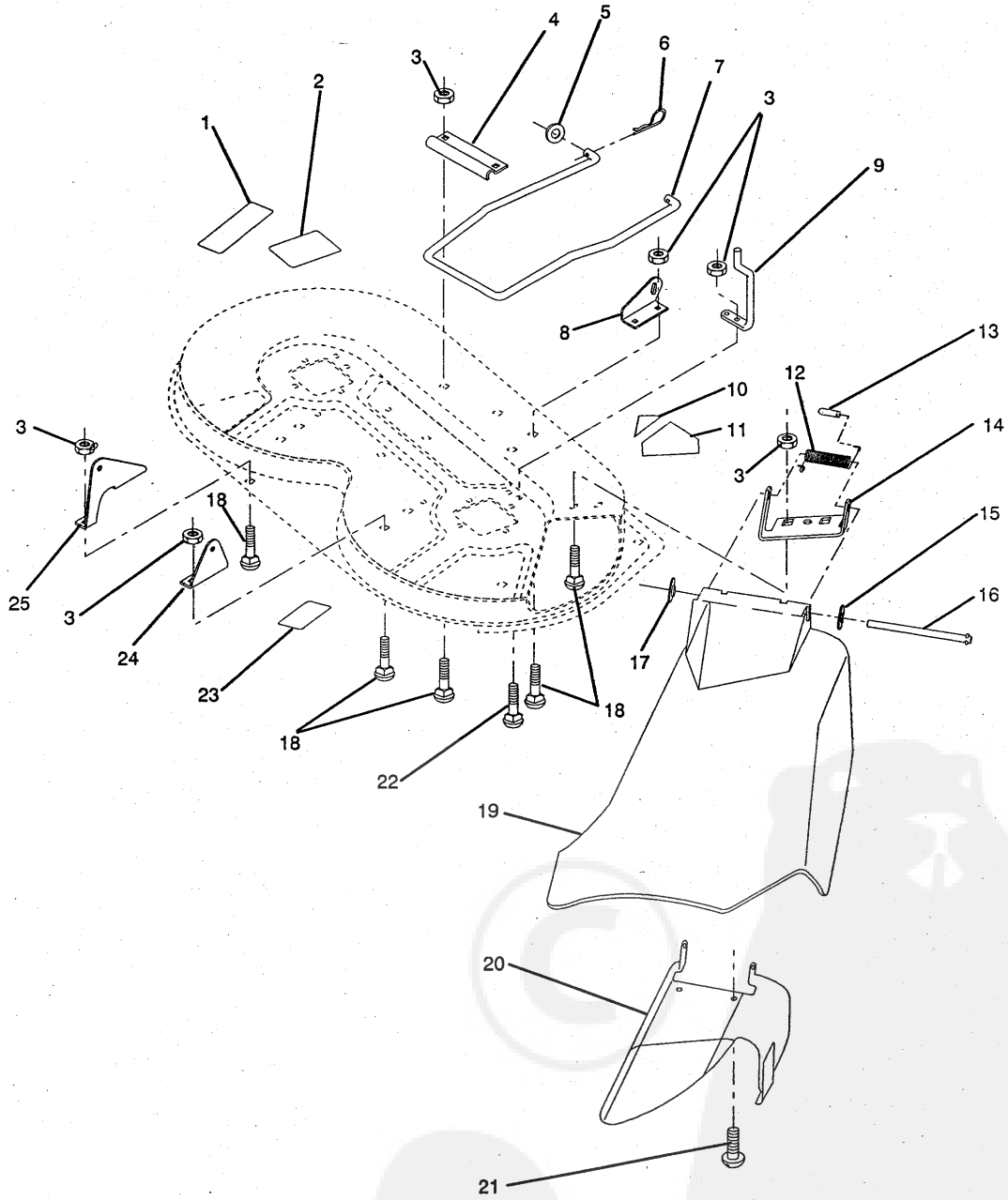
KEY NO.	PART NO.	DESCRIPTION
19	73350600	Nut, Hex, Jam 3/8 x 16 UNC
20	74760644	Bolt, Fin. Hex 3/8-16 UNC x 2-3/4
21	17490508	Screw, Hex, Threaded, Roll. 5/16-18 x 1/2
22	121929X	Bracket, Mower Height
23	76020416	Pin, Cotter 1/8 x 1
24	19171616	Washer 17/32 x 1 x 16 Gauge
25	121933X	Tube, Spacer
26	121934X	Rod, Mower Lift
27	19131316	Washer 13/32 x 13/32 x 16 Ga.
28	121466X	Knob
29	76020312	Pin, Cotter 3/32 x 3/4
30	123671X	Link, Mower Clutch
31	73680400	Nut, Crownlock 1/4-20

NOTE: All component dimensions given in U.S. inches
1 inch = 25.4 mm

HARDWARE SHOWN LARGER FOR EASIER IDENTIFICATION

ILLUSTRATED PARTS BREAKDOWN

MOWER DECK



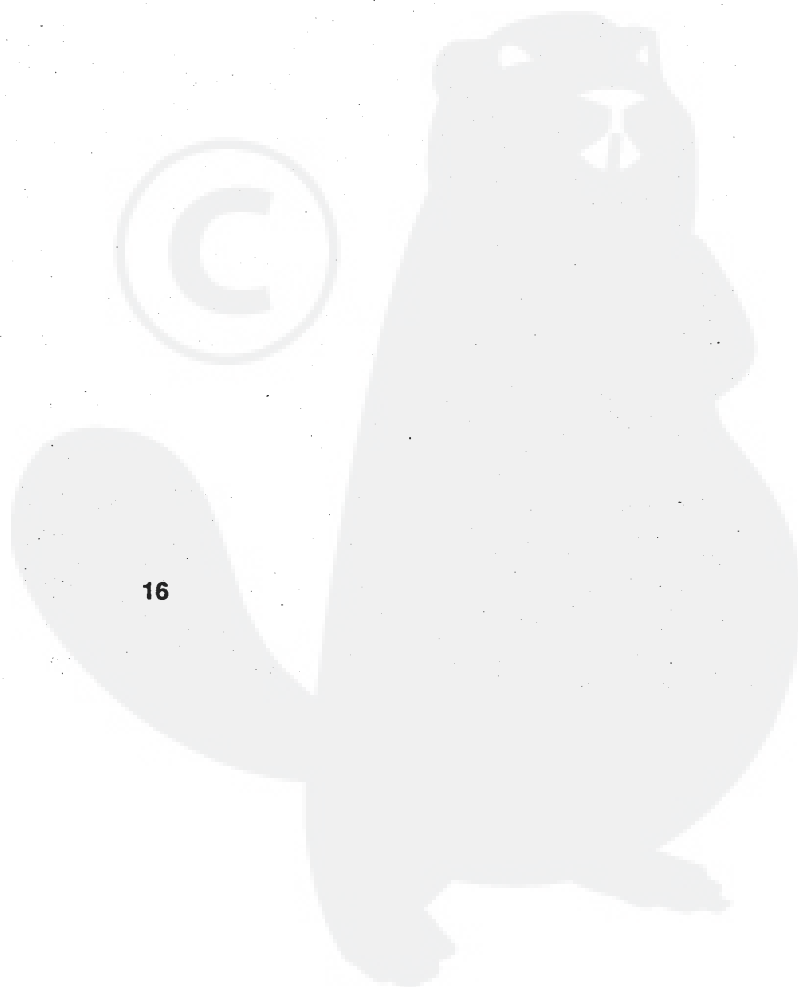
ILLUSTRATED PARTS BREAKDOWN

MOWER DECK

KEY NO.	PART NO.	DESCRIPTION	KEY NO.	PART NO.	DESCRIPTION
1	109820X	Decal, Caution	15	19111016	Washer 11/32 x 5/8 x 16 Gauge
2	105814X	Decal, V-Belt Mower Drive	16	121980X	Rod, Hinge
3	73680500	Nut Crownlock 5/16-18	17	110452X	Pushnut
4	122047X	Bracket, Stabilizer Link	18	72140505	Bolt, Carriage 5/16-18 UNC x 5/8
5	19171713	Washer 17/32 x 1-1/16 x 13 Ga.	19	126370X	Guard, Discharge
6	3146R	Retainer, Spring	20	125629X	Assembly, Deflector Support
7	124636X	Stabilizer, Mower Link	21	17051007	Screw, Pan Head PLT-30
8	122045X	Bracket, Front Lift, R.H.	22	74760512	Bolt, Hex Head 5/16-18 UNC x 3/4
9	123661X	Guide, Front Mandrel, R.H. Mower Belt	23	123649X	Decal, Warning
10	109984X	Decal, Safety Standard (not serviced)	24	122043X	Bracket, Rear Lift, R.H.
11	123658X	Decal, Warning	25	122044X	Bracket, Rear Lift, L.H.
12	123713X	Spring, Torsion			
13	105304X	Cap, Sleeve			
14	126361X	Bracket, Deflector			

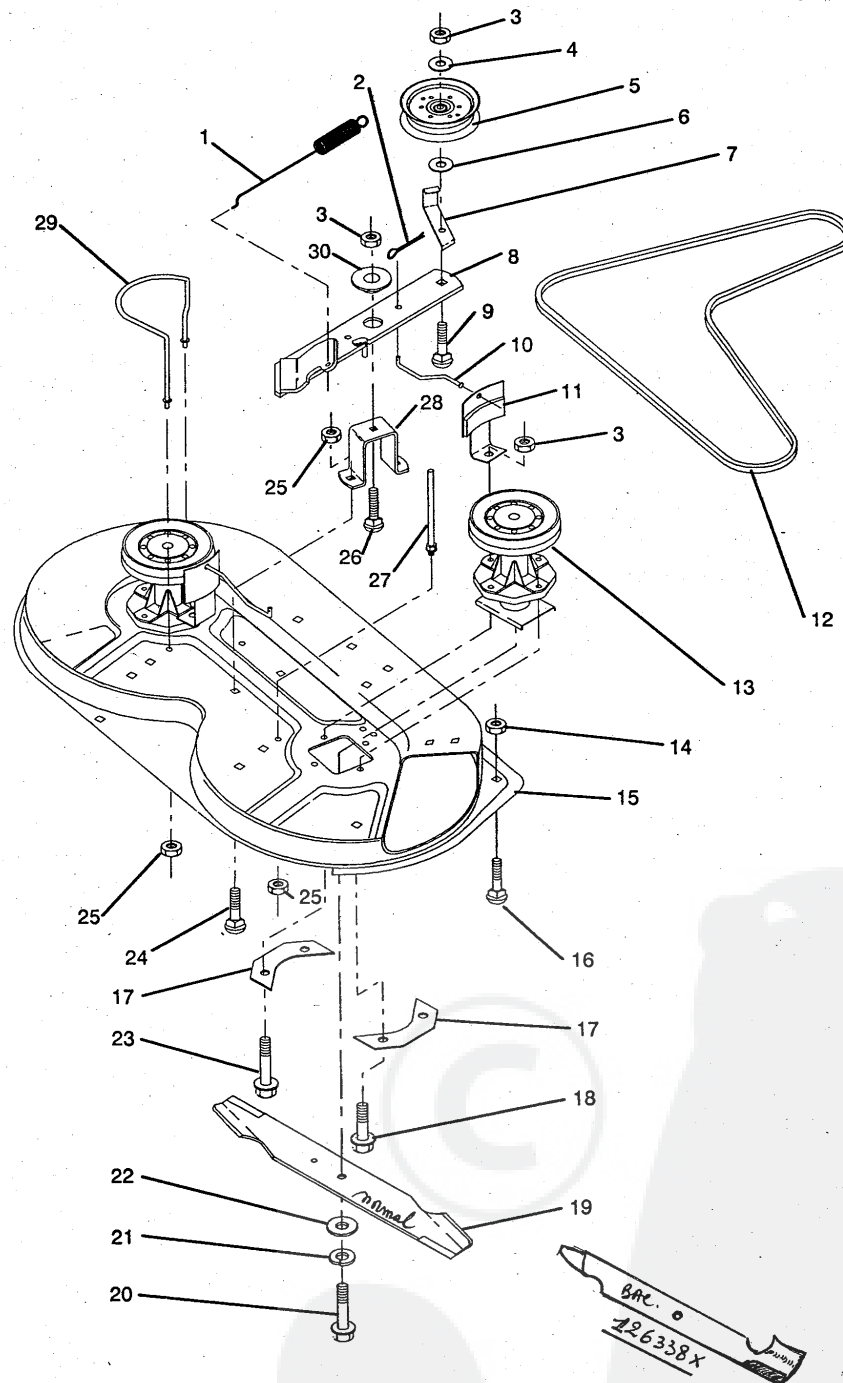
NOTE: All component dimensions given in U.S. inches
1 inch = 25.4 mm

HARDWARE SHOWN LARGER FOR EASIER IDENTIFICATION



ILLUSTRATED PARTS BREAKDOWN

MOWER DECK



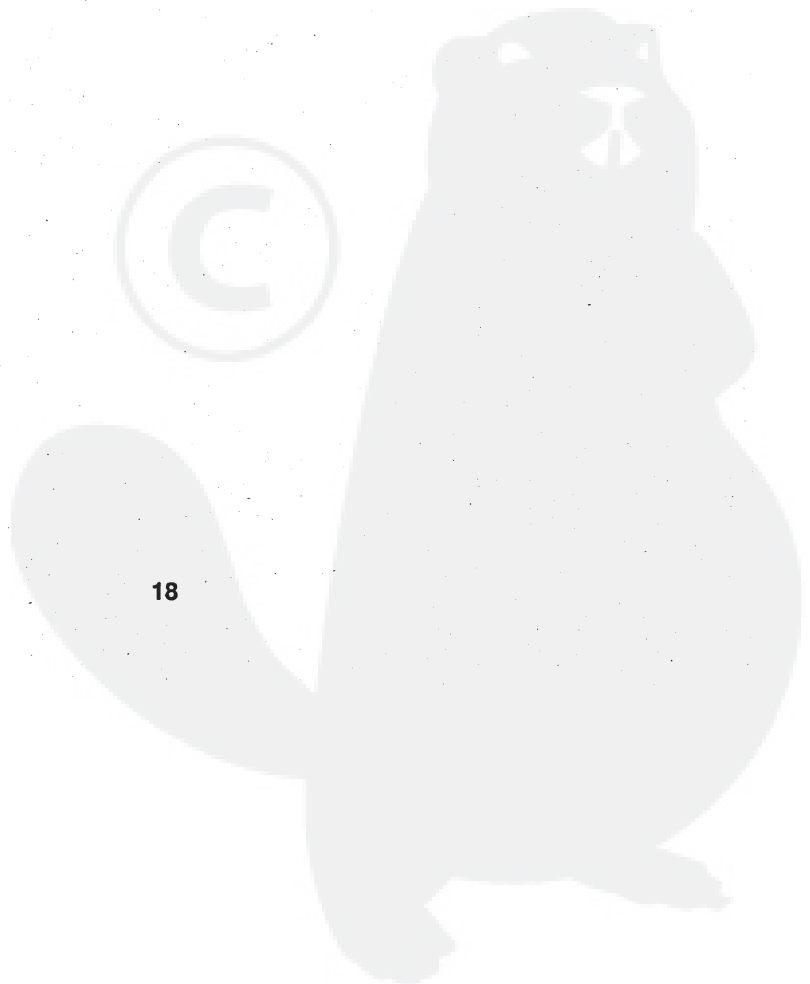
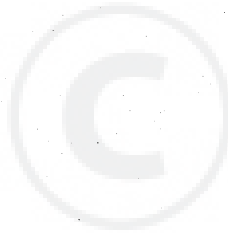
ILLUSTRATED PARTS BREAKDOWN

MOWER DECK

KEY NO.	PART NO.	DESCRIPTION	KEY NO.	PART NO.	DESCRIPTION
1	122028X	Spring, Mower Clutch	19	122260X	Blade, Low Lift
2	76020312	Pin, Cotter 3/32 x 3/4	20	74610624	Bolt, Fin. Hex 3/8-24 UNF x 1-1/2 Grade 5
3	73680600	Nut, Crownlock 3/8-16 UNC	21	10030600	Washer, Lock, Hvy. 3/8
4	19131412	Washer 13/32 x 7/8 x 12 Gauge	22	19132012	Washer 13/32 x 1-1/4 x 12 Ga.
5	121316X	Idler, Flat	23	17490620	Screw, Hex, Threaded, Roll. 3/8-16 x 1-1/4
6	19132203	Washer 13/32 x 1-3/8 3 Gauge	24	72140505	Bolt, Carriage 5/16-18 UNC x 5/8
7	126756X	Guide, Belt	25	73680500	Nut, Crownlock 5/16-18
8	123702X	Assembly, Mower Idler Arm	26	72110608	Bolt, Carriage 3/8-16 UNC x 1 Grade 5
9	72110618	Bolt, Carriage 3/8-16 x 2-1/4	27	123439X	Guide, Rear Belt, R.H.
10	122049X	Rod, Brake	28	122051X	Support, Idler Arm
11	106578X	Assembly, Brake	29	123673X	Guide, Belt, L.H.
12	124293X	V-Belt	30	122052X	Spacer, Retainer
13	124208X	Assembly, Mandrel			
14	73680400	Nut, Crownlock 1/4-20			
15	126410X	Housing, Mower			
16	72140404	Bolt, Carriage 1/4-20 x 1/2			
17	100668L	Support, Plate Jackshaft			
18	17490614	Screw, Hex, Threaded, Roll. 3/8-16 x 7/8			

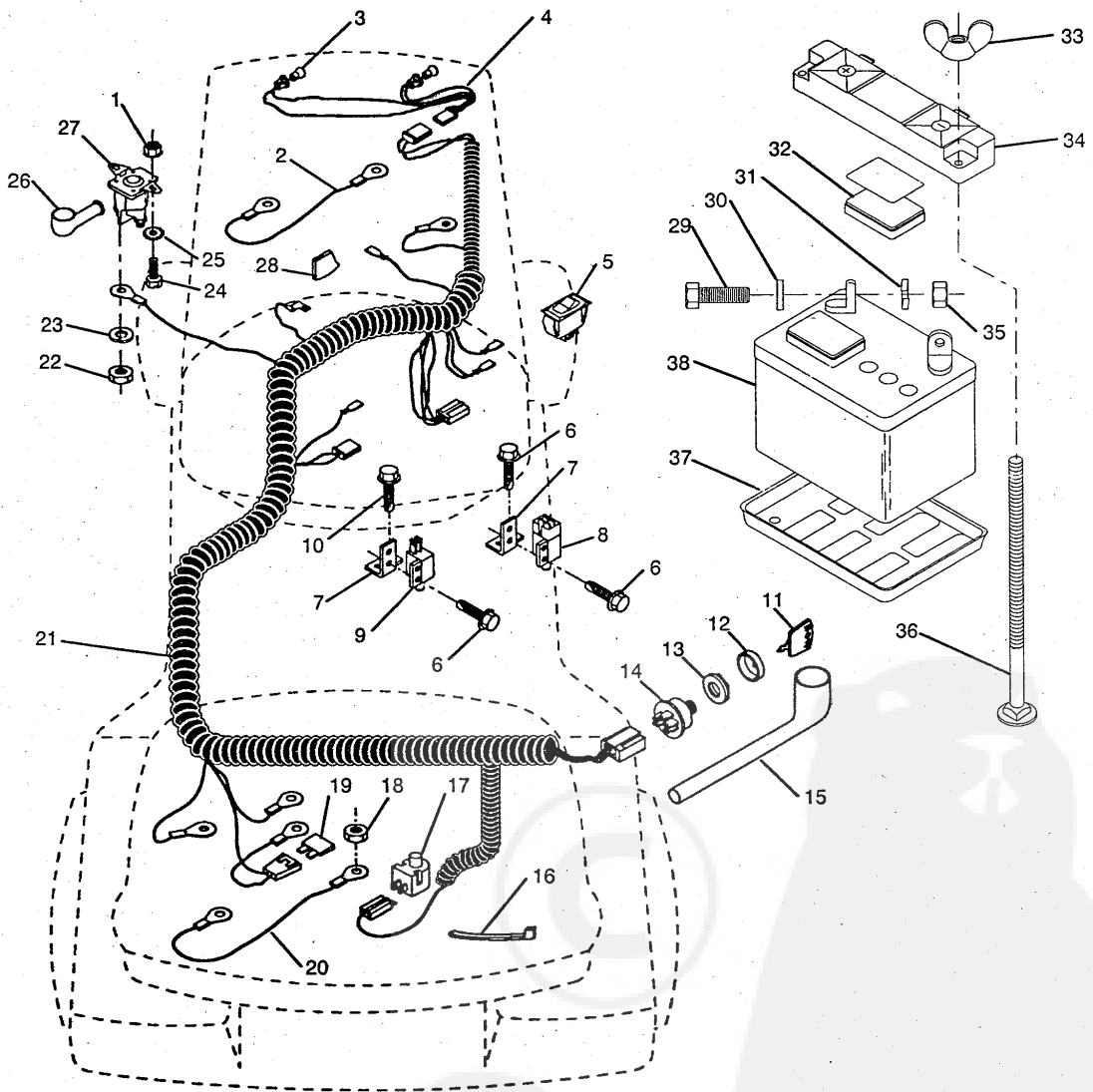
NOTE: All component dimensions given in U.S. inches
1 inch = 25.4 mm

HARDWARE SHOWN LARGER FOR EASIER IDENTIFICATION



ILLUSTRATED PARTS BREAKDOWN

ELECTRICAL



ILLUSTRATED PARTS BREAKDOWN

ELECTRICAL

KEY NO.	PART NO.	DESCRIPTION	KEY NO.	PART NO.	DESCRIPTION
1	73510400	Nut, Hex, Keps 1/4-20	26	719J	Cover, Terminal
2	105002X	Assembly, Cable	27	109081X	Solenoid
3	7662J	Bulb, Light	28	125760X	Stop, Choke
4	127441X	Socket, Light Harness	29	74760412	Bolt, Hex Head
5	110712X	Switch, Light			1/4-20 UNC x 3/4
6	17021008	Screw, Hex Head, Tapping, #10-24 x 1/2	30	19091016	Washer 9/32 x 5/8 x 16 Gauge
7	108236X	Bracket, Switch	31	10040400	Washer, Lock, Heavy Helical
8	109553X	Switch, Interlock			Spring 1/4
9	104445X	Switch, Interlock	32	121264X	Battery, Cap
10	17211008	Screw, Hex Washer Head, Tap. #10-16 x 1/2	33	123198X	Wing Nut, Locking, Plastic 1/4-20
11	122147X	Key, Molded	34	102476X	Guard, Terminal
12	123620X	Cover, Key Ignition	35	73220400	Nut, Fin. Hex 1/4-20 UNC
13	124211X	Nut, Ignition	36	72240460	Bolt, Carriage
14	4406R	Switch, Ignition			1/4-20 UNC x 7-1/2
15	124083X	Cover, Ignition Switch	37	7603J	Tray, Battery
16	7192J	Tie, Cable	38	121265X	Battery
17	121305X	Switch, Plunger	-	127661X	Manual, Operator's (English)
18	73510500	Nut, Hex, Keps 5/16-18	-	127662X	Manual, Operator's (French)
19	108824X	Fuse	-	MS-9811	Manual, Operating and Maintenance, Briggs and Stratton
20	596J	Assembly, Cable	-	127673	Manual, Parts (English & French)
21	124190X	Harness, Ignition	-	101539X	Sheet, Instruction, Tractor, 15° Slope (English)
22	73350400	Nut, Hex, Jam 1/4-20	-	101572X	Sheet, Instruction, Tractor, 15° Slope (French)
23	10090400	Washer, Lock 1/4			
24	74780408	Bolt, Fin. Hex 1/4-20 UNC x 1/2 Grade 5			
25	11050400	Washer, Lock, External Tooth 1/4			

NOTE: All component dimensions given in U.S. inches
1 inch = 25.4 mm

HARDWARE SHOWN LARGER FOR EASIER IDENTIFICATION