

Spare Parts List

2006-03



MS-3210

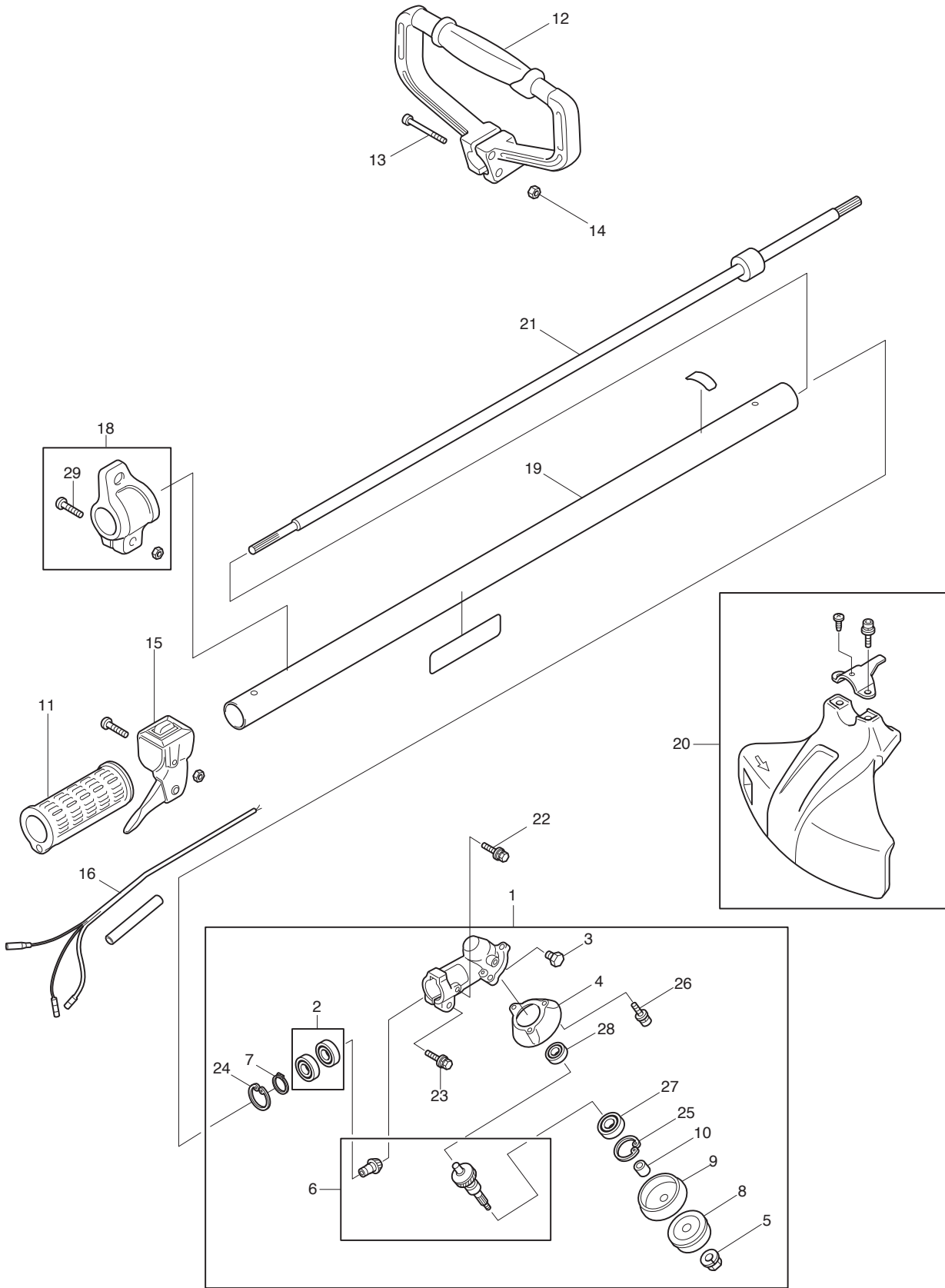
IMPORTANT! - To assure product SAFETY and RELIABILITY, repairs, maintenance or adjustments should be performed by DOLMAR Service Centers, or other qualified service organisations. Always use DOLMAR replacement parts.

DOLMAR



A member of the *Makita* Group

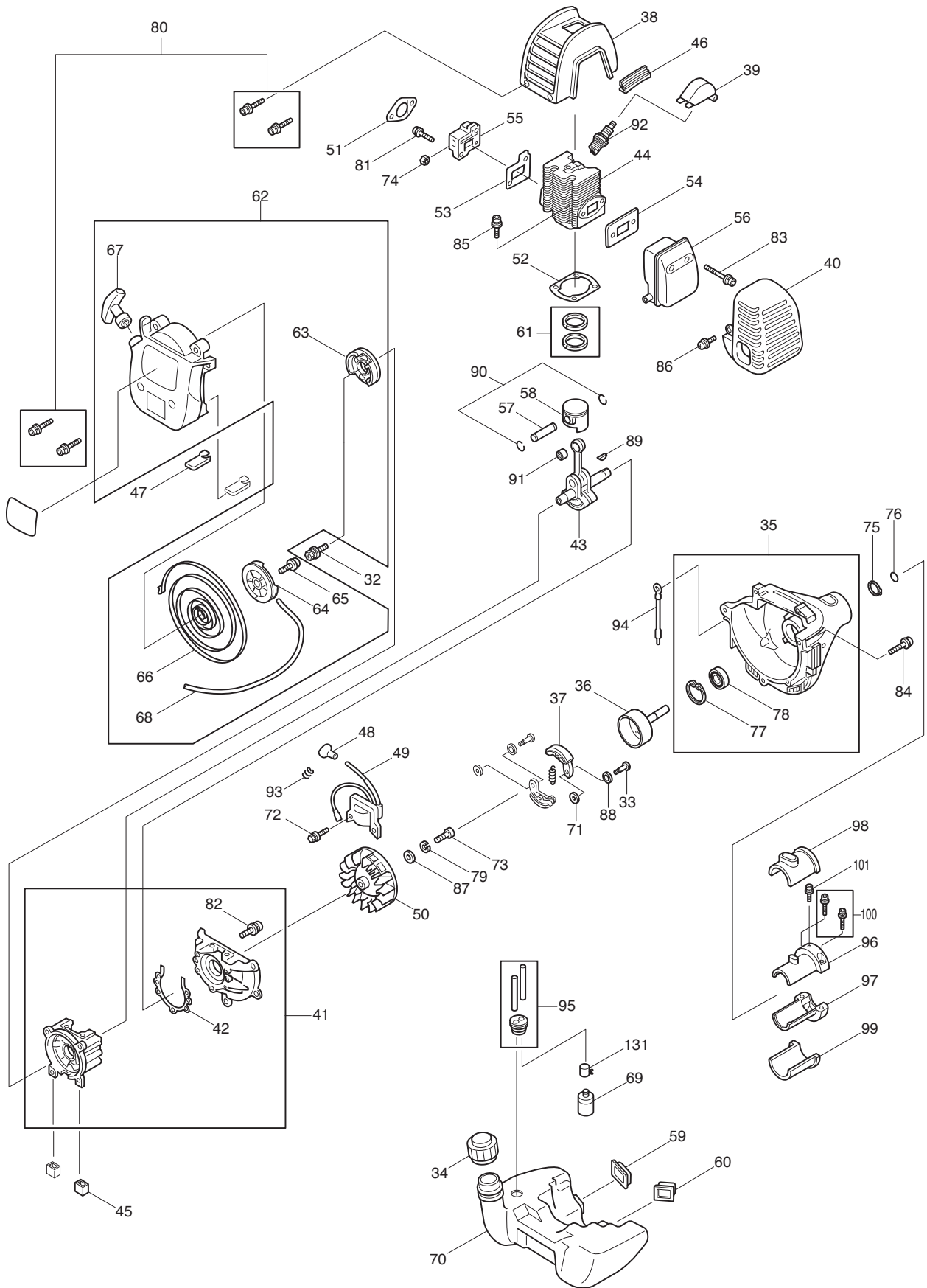
995 700 265 (GB)



MS-3210

DOLMAR

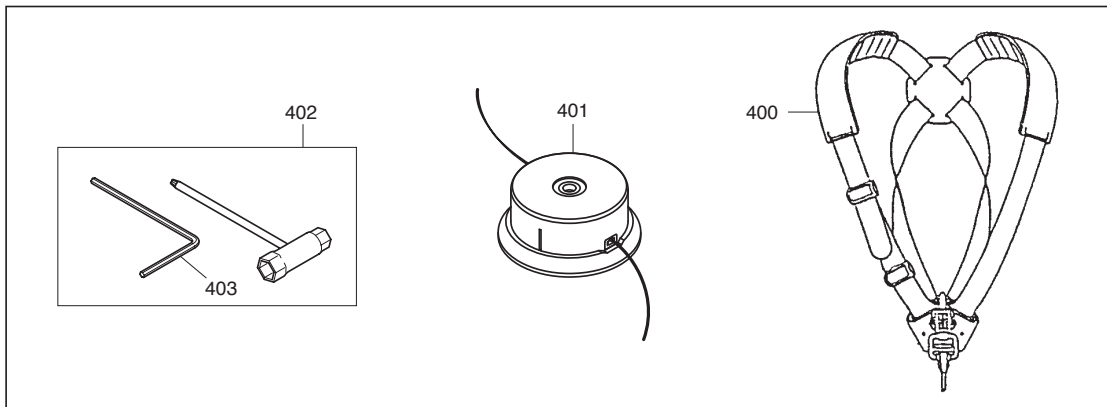
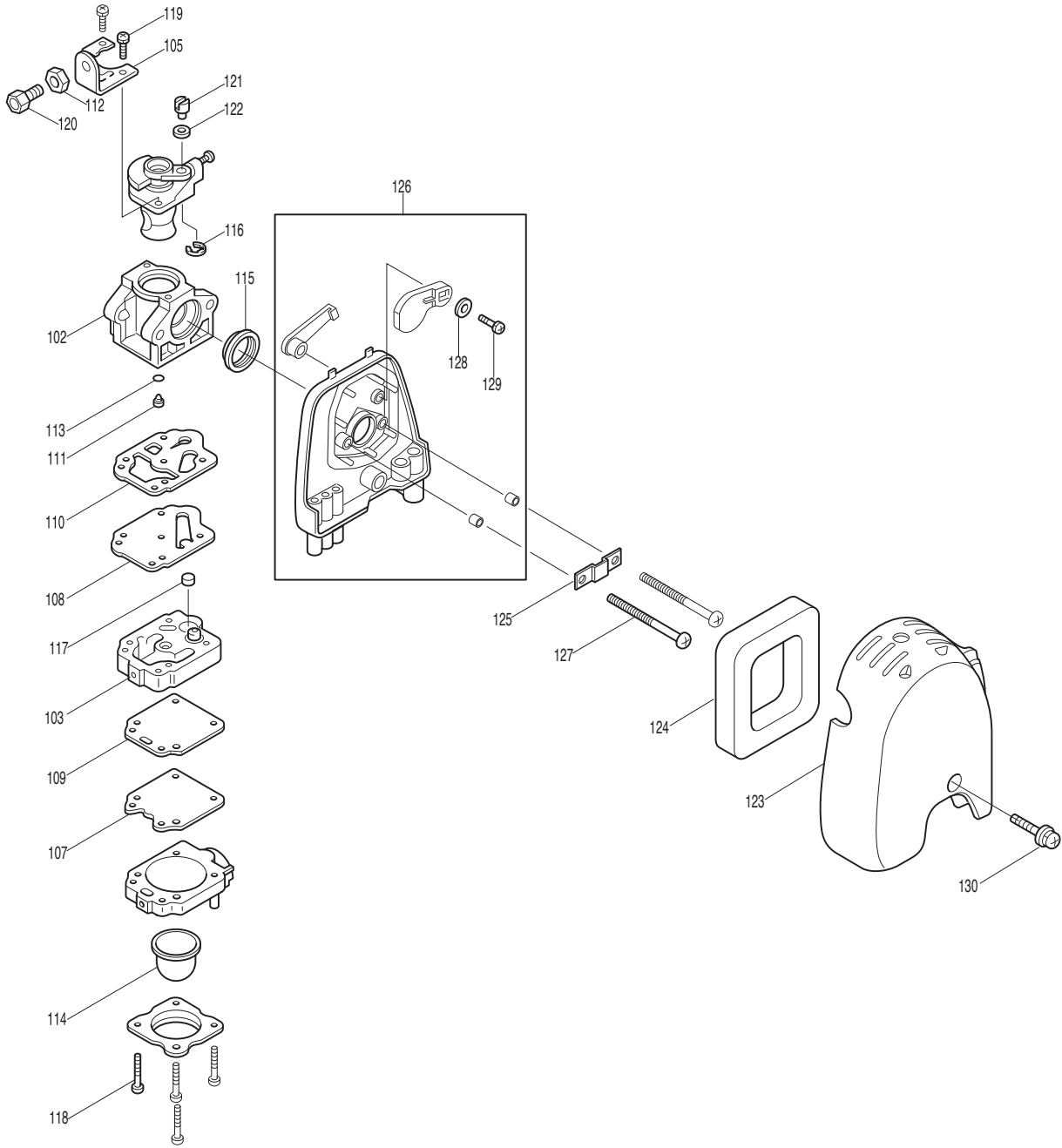
Page	Pos.	MS-3210	Part No.	Notes	Description	Specifications
1	1	1	660 300 100		GEAR CASE UNIT	INC. 2-10, 23-28
1	2	2	381 250 030		BALL BEARING	#609ZZ
1	3	1	381 350 060		OIL BOLT	
1	4	1	383 850 020		GUARD	
1	5	1	367 850 500		NUT	
1	6	1	388 301 300		CUTTER SHAFT SET	
1	7	1	381 350 260		OUTER SNAP RING	
1	8	1	383 850 000		CLAMP WASHER	
1	9	1	383 850 360		RECEIVE WASHER	
1	10	1	381 350 130		SPACER	
1	11	1	374 450 040		GRIP	
1	12	1	374 450 000		HANDLE (LOOP TYPE)	
1	13	4	367 905 986		SOCKET HEAD BOLT	M5X33
1	14	4	381 270 500		NUT	M5
1	15	1	374 501 800		CONTROL LEVER	
1	16	1	374 550 010		CONTROL CABLE	
1	18	1	381 402 300		HANGER ASS'Y	INC. 29
1	19	1	381 100 200		SHAFT PIPE COMPLETE	
1	20	1	381 800 800		PROTECTOR ASS'Y	
1	21	1	381 150 080		SHAFT	
1	22	1	381 130 612		BOLT ASS'Y	M6X12
1	23	1	381 130 630		BOLT ASS'Y	M6X30
1	24	1	381 142 400		INNER SNAP RING	
1	25	1	383 143 000		INNER SNAP RING	
1	26	3	381 905 978		SOCKET HEAD BOLT	M5X12
1	27	1	381 010 997		BALL BEARING	#6200DDU
1	28	1	381 007 999		BALL BEARING	627ZZ
1	29	1	367 360 520		SCREW & WASHER ASS'Y	



MS-3210



Page	Pos.	MS-3210	Part No.	Notes	Description	Specifications
2	32	1	383 200 605		BOLT ASS'Y	
2	33	2	381 250 040		CLUTCH BOLT	
2	34	1	367 601 500		FUEL TANK CAP	
2	35	1	382 100 400		CLUTCH CASE ASS'Y	INC. 77, 78
2	36	1	382 200 200		CLUTCH DRUM CPL.	
2	37	1	382 200 300		CLUTCH	
2	38	1	374 550 400		CYLINDER COVER	
2	39	1	381 750 070		PLUG COVER	
2	40	1	381 350 330		MUFFLER COVER	
2	41	1	381 100 700		CRANKCASE COMPL.	INC. 42, 82
2	42	1	381 150 120		CRANKSHAFT GASKET	
2	43	1	381 200 700		CRANKSHAFT COMPL.	
2	44	1	383 150 020		CYLINDER	
2	45	2	381 650 025		DAMPER	
2	46	1	381 550 410		DAMPER	
2	47	2	381 650 310		DAMPER	
2	48	1	381 701 003		PLUG CAP	
2	49	1	381 701 002		COIL	
2	50	1	381 701 001		FLYWHEEL	
2	51	1	381 350 280		SPACER GASKET	
2	52	1	383 150 030		CYLINDER GASKET	
2	53	1	381 350 230		INSULATOR GASKET	
2	54	1	381 350 220		MUFFLER GASKET	
2	55	1	383 350 050		INSULATOR	
2	56	1	382 300 900		EXHAUST MUFFLER	
2	57	1	383 250 040		PISTON PIN	
2	58	1	383 250 060		PISTON	
2	59	1	381 650 020		PLATE	
2	60	1	381 650 030		PLATE	
2	61	2	383 250 020		PISTON RING	
2	62	1	381 501 200		REWIND STARTER	INC. 63-68
2	63	1	382 500 700		PULLEY STARTER	
2	64	1	381 500 701		REEL	
2	65	1	381 500 702		SET SCREW	
2	66	1	382 500 302		SPIRAL SPRING	
2	67	1	381 500 211		STARTER KNOB	
2	68	1	374 502 402		STARTER ROPE	
2	69	1	382 650 390		FILTER	
2	70	1	381 650 200		FUEL TANK	
2	71	2	381 250 000		WASHER	
2	72	2	381 160 520		BOLT ASSEMBLY	
2	73	1	383 660 616		BOLT	M6X16
2	74	2	381 170 500		NUT	M5
2	75	1	382 151 200		OUTER SNAP RING	
2	76	1	381 261 006		O-RING	
2	77	1	382 143 200		INNER SNAP RING	
2	78	1	382 012 995		BALL BEARING	#6201DD/#6201 2
2	79	1	383 200 600		SPRING WASHER	
2	80	4	381 905 957		SOCKET HEAD BOLT	M5X30
2	81	2	377 905 963		SOCKET HEAD BOLT	M5X20
2	82	5	383 005 979		SCREW	M5X25
2	83	2	377 905 967		SOCKET HEAD BOLT	M5X55
2	84	3	382 905 973		SOCKET HEAD BOLT	M5X20
2	85	4	381 905 995		SOCKET HEAD BOLT	M5X18
2	86	1	381 005 948		SCREW ASS'Y	M5X14
2	87	1	383 006 992		WASHER	M6
2	88	2	383 008 991		WASHER	M8
2	89	1	381 303 999		WOODRUFF KEY	
2	90	2	381 508 998		CLIP	
2	91	1	381 008 999		NEEDLE ROLLER BEARING	
2	92	1	381 014 981		SPARK PLUG	
2	93	1	377 400 993		PLUG CAP SPRING	
2	94	1	374 550 020		WIRE	
2	95	1	382 117 997		TUBE	
2	96	1	367 150 010		PIPE DAMPER (1)	
2	97	1	367 150 020		PIPE DAMPER (2)	
2	98	1	367 150 030		PIPE BRACKET (1)	
2	99	1	367 150 040		PIPE BRACKET (2)	
2	100	2	381 905 995		SOCKET HEAD BOLT	M5X18
2	101	1	367 905 990		SOCKET HEAD BOLT	M5X12
2	131	1	382 650 170		HOSE CLAMP	



MS-3210



Page	Pos.	MS-3210	Part No.	Notes	Description	Specifications
3	102	1	381 602 100		CARBURETOR	
3	103	1	374 604 613		PUMP BODY ASS'Y	
3	105	1	381 605 202		BRACKET CABLE	
3	107	1	381 600 525		METERING DIAPHRAGM ASS'Y	
3	108	1	381 600 104		PUMP DIAPHRAGM	
3	109	1	381 604 604		METERING DIAPHRAGM GASKET	
3	110	1	381 600 103		PUMP GASKET	
3	111	1	381 600 201		JET	
3	112	1	381 600 545		CABLE ADJUST NUT	
3	113	1	381 600 101		O-RING	
3	114	1	381 600 115		PRIMER PUMP	
3	115	1	381 601 802		RING PACKING	
3	116	1	381 600 512		RING	
3	117	1	381 600 401		INLET SCREEN	
3	118	4	381 604 601		PUMP COVER SCREW	
3	119	2	381 600 124		THROTTLE COLLAR SCREW	
3	120	1	381 602 002		SCREW CABLE ADJ.	
3	121	1	381 601 804		SWIVEL	
3	122	1	381 605 203		WASHER	
3	123	1	381 350 320		AIR CASE CLEANER	
3	124	1	388 350 470		AIR CLEANER ELEMENT	
3	125	1	381 350 240		AIR PLATE CLEANER ASS'Y	
3	126	1	381 301 500		AIR PLATE CLEANER ASS'Y	INC. 128, 129
3	127	2	382 005 973		SCREW	M5X50
3	128	1	388 110 400		WASHER	
3	129	1	388 004 998		TAPPING SCREW	M4X8
3	130	1	381 005 948		SCREW ASS'Y	M5X14
3	400	1	374 701 500		BAND ASS'Y	
3	401	1	381 224 261		NYLON CUTTING HEAD	4Y
3	402	1	381 900 600		TOOL KIT	INC. HEX. WRENCH
3	403	1	374 832 020		HEX. WRENCH	

- | | |
|---|---|
| 1 | Pipe, handle, protector, gear case, control lever |
| 2 | Engine, starter, clutch, fuel tank, exhaust muffler |
| 3 | Carburetor, air cleaner, accessories |

	Key to symbols
⇒ 1999999 2000000 ⇒ 2003.04 ⇒ TI 2003/07 Acc. = { m Corr.	Production to serial number New part from serial number New part from Year / Month See Technical Information Year / No. Accessories (not included in the delivery inventory) No standard execution, may be used Contains item number Sold by the meter Error correction
	Specifications subject to change without notice