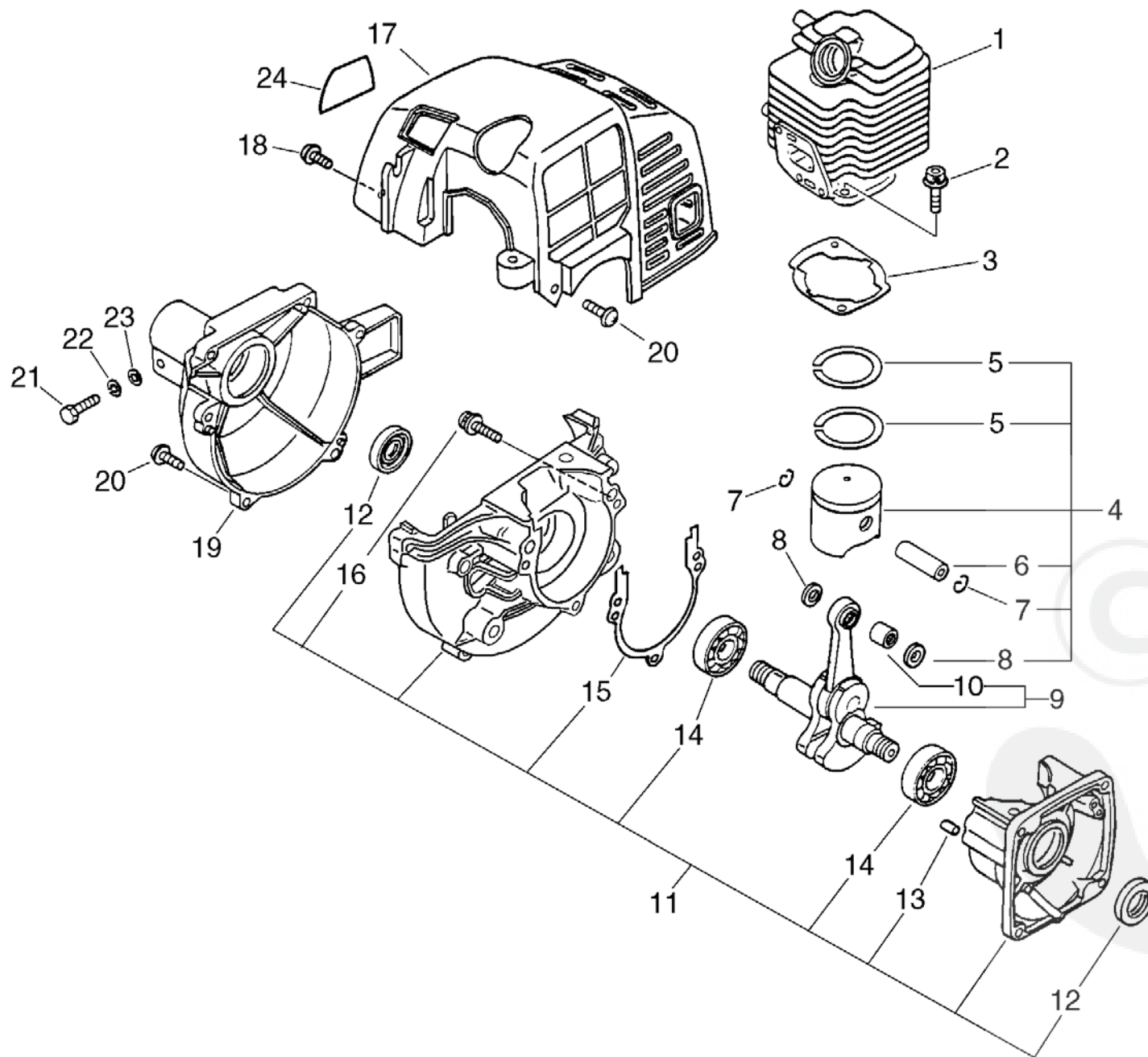


# No.1



# Parts List

Group:Trimmers/Brushcutters Model:SRM-2015 Section:Cylinder, Crankcase, Piston, Fan Cover( 1)

Key	Lv	Part Number	Q'ty	Description	Remarks	Note
1		101011-06560	1	CYLINDER	Sus. by 101011-06562	
1		101011-06560	1	CYLINDER	Sus. by 101011-06562	
1		101011-06561	1	CYLINDER	Sus. by 101011-06562	
1		101011-06561	1	CYLINDER	Sus. by 101011-06562	
1		101011-06562	1	CYLINDER		
1		101011-06562	1	CYLINDER		
2		900162-05022	2	BOLT, H.S. 5*22		
2		900162-05022	2	BOLT, H.S. 5*22		
3		101010-44332	1	GASKET, CYL. BASE		
3		101010-44332	1	GASKET, CYL. BASE		
4		100000-48730	1	PISTON KIT	Sus. by 100000-48732	
4		100000-48730	1	PISTON KIT	Sus. by 100000-48732	
4		100000-48731	1	PISTON KIT	Sus. by 100000-48732	
4		100000-48731	1	PISTON KIT	Sus. by 100000-48732	
4		100000-48732	1	PISTON KIT		
4		100000-48732	1	PISTON KIT		
5	+	100011-05330	2	RING, PISTON		
5	+	100011-05330	2	RING, PISTON		
6	+	100013-11520	1	PIN, PISTON		
6	+	100013-11520	1	PIN, PISTON		
7	+	100015-04630	2	CIRCLIP, PISTON PIN		
7	+	100015-04630	2	CIRCLIP, PISTON PIN		
8	+	100014-11520	2	SPACER, PISTON PIN		
8	+	100014-11520	2	SPACER, PISTON PIN		
9		100100-54130	1	CRANKSHAFT ASY	Sus. by A011-000101	
9		100100-54130	1	CRANKSHAFT ASY	Sus. by A011-000101	
9		100100-44732	1	CRANKSHAFT ASY	Sus. by A011-000101	
9		100100-44732	1	CRANKSHAFT ASY	Sus. by A011-000101	

# Parts List

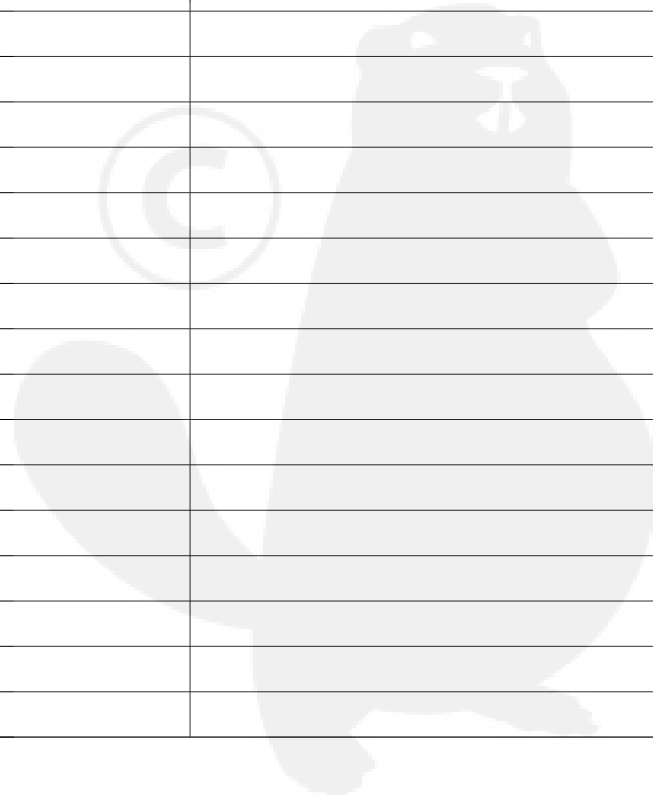
Group:Trimmers/Brushcutters Model:SRM-2015 Section:Cylinder, Crankcase, Piston, Fan Cover( 1)

Key	Lv	Part Number	Q'ty	Description	Remarks	Note
9		100100-44733	1	CRANKSHAFT ASY	Sus. by A011-000101	
9		100100-44733	1	CRANKSHAFT ASY	Sus. by A011-000101	
9		A011-000101	1	CRANKSHAFT,ASM		
9		A011-000101	1	CRANKSHAFT,ASM		
10	+	100012-51230	1	BEARING, NEEDLE	Sus. by V553-000010	
10	+	100012-51230	1	BEARING, NEEDLE	Sus. by V553-000010	
10	+	V553-000030	1	BEARING, NEEDLE 8	Sus. by V553-000010	
10	+	V553-000030	1	BEARING, NEEDLE 8	Sus. by V553-000010	
10	+	V553-000010	1	BEARING,NEEDLE 8		
10	+	V553-000010	1	BEARING,NEEDLE 8		
11		100204-52130	1	CRANKCASE KIT	Sus. by 100204-52132	
11		100204-52130	1	CRANKCASE KIT	Sus. by 100204-52132	
11		100204-52131	1	CRANKCASE KIT	Sus. by 100204-52132	
11		100204-52131	1	CRANKCASE KIT	Sus. by 100204-52132	
11		100204-52132	1	CRANKCASE KIT		
11		100204-52132	1	CRANKCASE KIT		
12	+	100212-42030	2	OILSEAL	Sus. by 100212-42031	
12	+	100212-42030	2	OILSEAL	Sus. by 100212-42031	
12	+	100212-42031	2	OILSEAL		
12	+	100212-42031	2	OILSEAL		
13	+	100215-03930	2	PIN, DOWEL		
13	+	100215-03930	2	PIN, DOWEL		
14	+	900810-36201	2	BEARING, BALL 6201	Sus. by 94035-36201	
14	+	900810-36201	2	BEARING, BALL 6201	Sus. by 94035-36201	
14	+	94035-36201	2	BEARING, BALL		
14	+	94035-36201	2	BEARING, BALL		
15	+	100242-42030	1	GASKET, CRANKCASE		
15	+	100242-42030	1	GASKET, CRANKCASE		

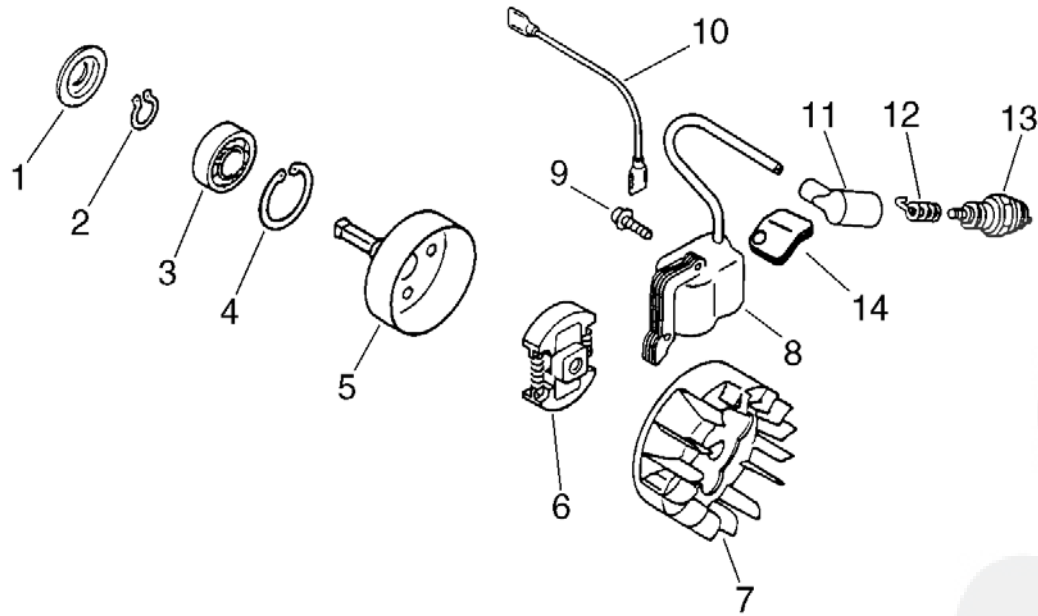
# P a r t s L i s t

Group:Trimmers/Brushcutters Model:SRM-2015 Section:Cylinder, Crankcase, Piston, Fan Cover( 1)

Key	Lv	Part Number	Q'ty	Description	Remarks	Note
16	+	900162-05028	3	BOLT, H.S. 5*28		
16	+	900162-05028	3	BOLT, H.S. 5*28		
17		101514-44731	1	COVER, CYLINDER	Sus. by 101514-42031	
17		101514-44731	1	COVER, CYLINDER	Sus. by 101514-42031	
17		101514-42031	1	COVER, CYLINDER		
17		101514-42031	1	COVER, CYLINDER		
18		900238-04012	2	SCREW 4*12		
18		900238-04012	2	SCREW 4*12		
19		101511-44630	1	COVER, FAN (BS)		
19		101511-44630	1	COVER, FAN (BS)		
20		900238-04016	6	SCREW 4*16		
20		900238-04016	6	SCREW 4*16		
21		900151-05025	1	BOLT 5*25		
21		900151-05025	1	BOLT 5*25		
22		900605-00005	1	WASHER, SPRING 5		
22		900605-00005	1	WASHER, SPRING 5		
23		900600-00005	1	WASHER 5		
23		900600-00005	1	WASHER 5		
24		890611-46730	1	LABEL, MODEL	SRM-2015	
24		890611-46730	1	LABEL, MODEL	SRM-2015	
24		X543-000110	1	LABEL, MODEL	SRM-2015S	
24		X543-000110	1	LABEL, MODEL	SRM-2015S	



# No.2



# Parts List

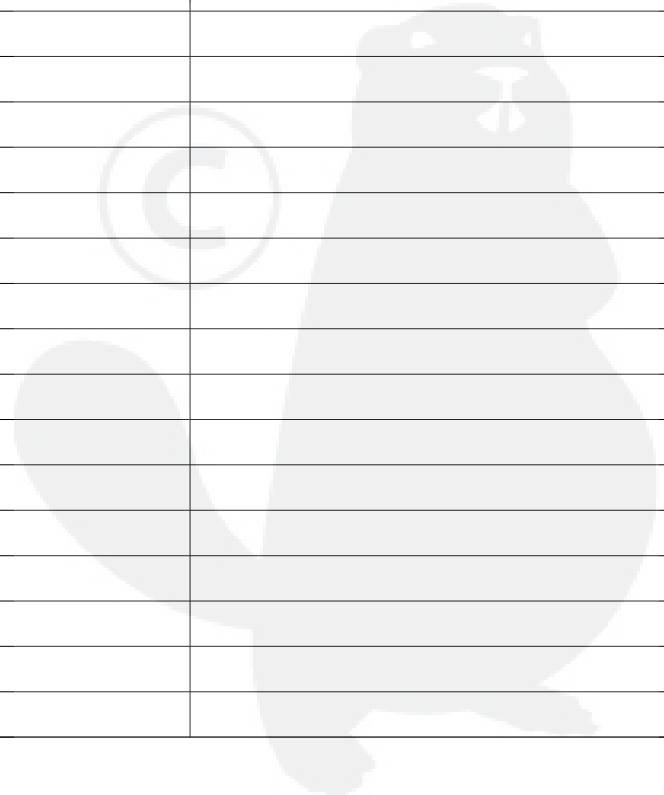
Group:Trimmers/Brushcutters Model:SRM-2015 Section:Magneto, Clutch( 2)

Key	Lv	Part Number	Q'ty	Description	Remarks	Note
1		175053-04920	1	STOPPER		
1		175053-04920	1	STOPPER		
2		900701-00012	1	CIRCLIP 12		
2		900701-00012	1	CIRCLIP 12		
3		900814-06201	1	BEARING, BALL 6201		
3		900814-06201	1	BEARING, BALL 6201		
4		900702-00032	1	CIRCLIP 32		
4		900702-00032	1	CIRCLIP 32		
5		175005-46730	1	DRUM, CLUTCH		
5		175005-46730	1	DRUM, CLUTCH		
6		175000-52130	1	CLUTCH ASY	Sus. by 175000-52131	
6		175000-52130	1	CLUTCH ASY	Sus. by 175000-52131	
6		175000-52131	1	CLUTCH ASY		
6		175000-52131	1	CLUTCH ASY		
7		156801-44731	1	FLYWHEEL	Sus. by 156801-44731	
7		156801-44731	1	FLYWHEEL	Sus. by 156801-44731	
7		156801-12360	1	FLYWHEEL	Sus. by 156801-44731	
7		156801-12360	1	FLYWHEEL	Sus. by 156801-44731	
7		156801-44731	1	FLYWHEEL		
7		156801-44731	1	FLYWHEEL		
8		156601-52130	1	COIL, IGNITION		
8		156601-52130	1	COIL, IGNITION		
9		900162-04022	2	BOLT, H.S. 4*22		
9		900162-04022	2	BOLT, H.S. 4*22		
10		162021-52130	1	LEAD	Sus. by 162010-52830	
10		162021-52130	1	LEAD	Sus. by 162010-52830	
10		162010-52830	1	LEAD, GROUND		
10		162010-52830	1	LEAD, GROUND		

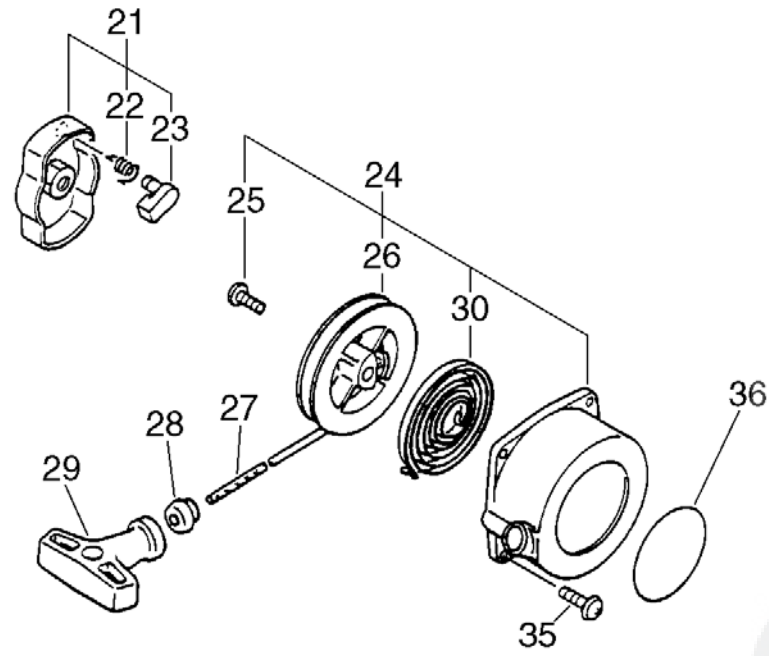
# Parts List

Group:Trimmers/Brushcutters Model:SRM-2015 Section:Magneto, Clutch( 2)

Key	Lv	Part Number	Q'ty	Description	Remarks	Note
11		159012-01620	1	CAP, SPARK PLUG		
11		159012-01620	1	CAP, SPARK PLUG		
12		159011-03432	1	COIL, SPARK PLUG CAP		
12		159011-03432	1	COIL, SPARK PLUG CAP		
13		159017-10230	1	PLUG, SPARK (RCJ-7Y)	Sus. by 159010-10230	
13		159017-10230	1	PLUG, SPARK (RCJ-7Y)	Sus. by 159010-10230	
13		159010-10230	1	PLUG, SPARK (BPMR-7A		
13		159010-10230	1	PLUG, SPARK (BPMR-7A		
14		150112-42030	1	BUSHING		
14		150112-42030	1	BUSHING		



# No.3



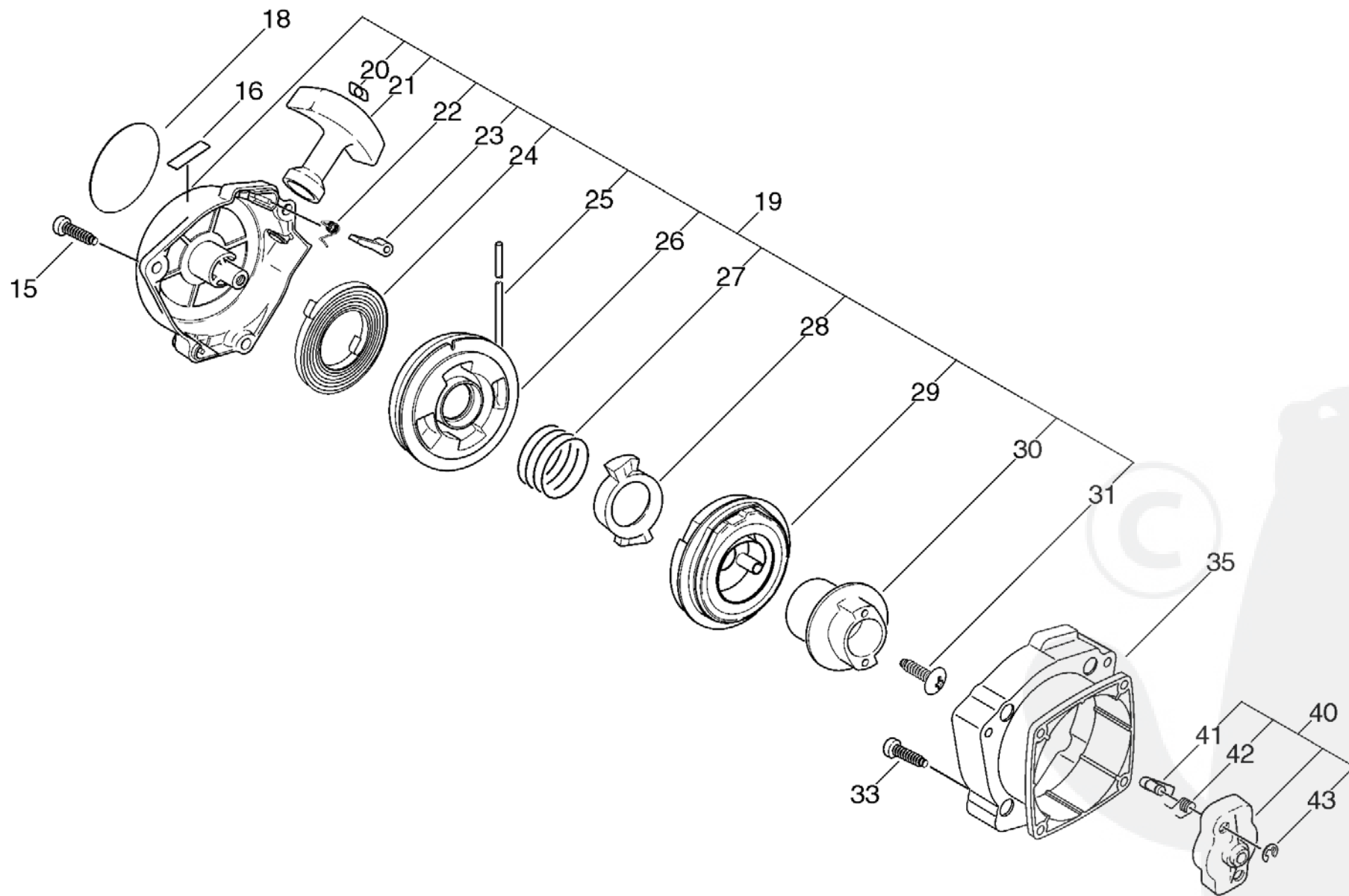


# Parts List

Group:Trimmers/Brushcutters Model:SRM-2015 Section:Starter(SRM-2015)( 3)

Key	Lv	Part Number	Q'ty	Description	Remarks	Note
21		177202-44330	1	PAWL ASY, STARTER	Sus. by 177202-44331	
21		177202-44330	1	PAWL ASY, STARTER	Sus. by 177202-44331	
21		177202-44331	1	PAWL ASY, STARTER	SRM-2015	
21		177202-44331	1	PAWL ASY, STARTER	SRM-2015	
22	+	177234-42030	1	SPRING, RETURN	SRM-2015	
22	+	177234-42030	1	SPRING, RETURN	SRM-2015	
23	+	177218-44330	1	PAWL, STARTER	SRM-2015	
23	+	177218-44330	1	PAWL, STARTER	SRM-2015	
24		177200-42033	1	STARTER ASY	SRM-2015	
24		177200-42033	1	STARTER ASY	SRM-2015	
25	+	177236-44330	1	SCREW	SRM-2015	
25	+	177236-44330	1	SCREW	SRM-2015	
26	+	177215-44430	1	DRUM, STARTER	SRM-2015	
26	+	177215-44430	1	DRUM, STARTER	SRM-2015	
27	+	177226-10120	1	ROPE, STARTER	SRM-2015	
27	+	177226-10120	1	ROPE, STARTER	SRM-2015	
28	+	177227-42030	1	GUIDE, ROPE	SRM-2015	
28	+	177227-42030	1	GUIDE, ROPE	SRM-2015	
29	+	177228-06530	1	GRIP, STARTER	SRM-2015	
29	+	177228-06530	1	GRIP, STARTER	SRM-2015	
30	+	177220-42030	1	SPRING, REWIND	SRM-2015	
30	+	177220-42030	1	SPRING, REWIND	SRM-2015	
35		900238-04016	2	SCREW 4*16	SRM-2015	
35		900238-04016	2	SCREW 4*16	SRM-2015	
36		890118-49130	1	LABEL, ECHO	SRM-2015	
36		890118-49130	1	LABEL, ECHO	SRM-2015	

# No.4



# P a r t s L i s t

Group:Trimmers/Brushcutters Model:SRM-2015 Section:Starter(SRM-2015SI)( 4)

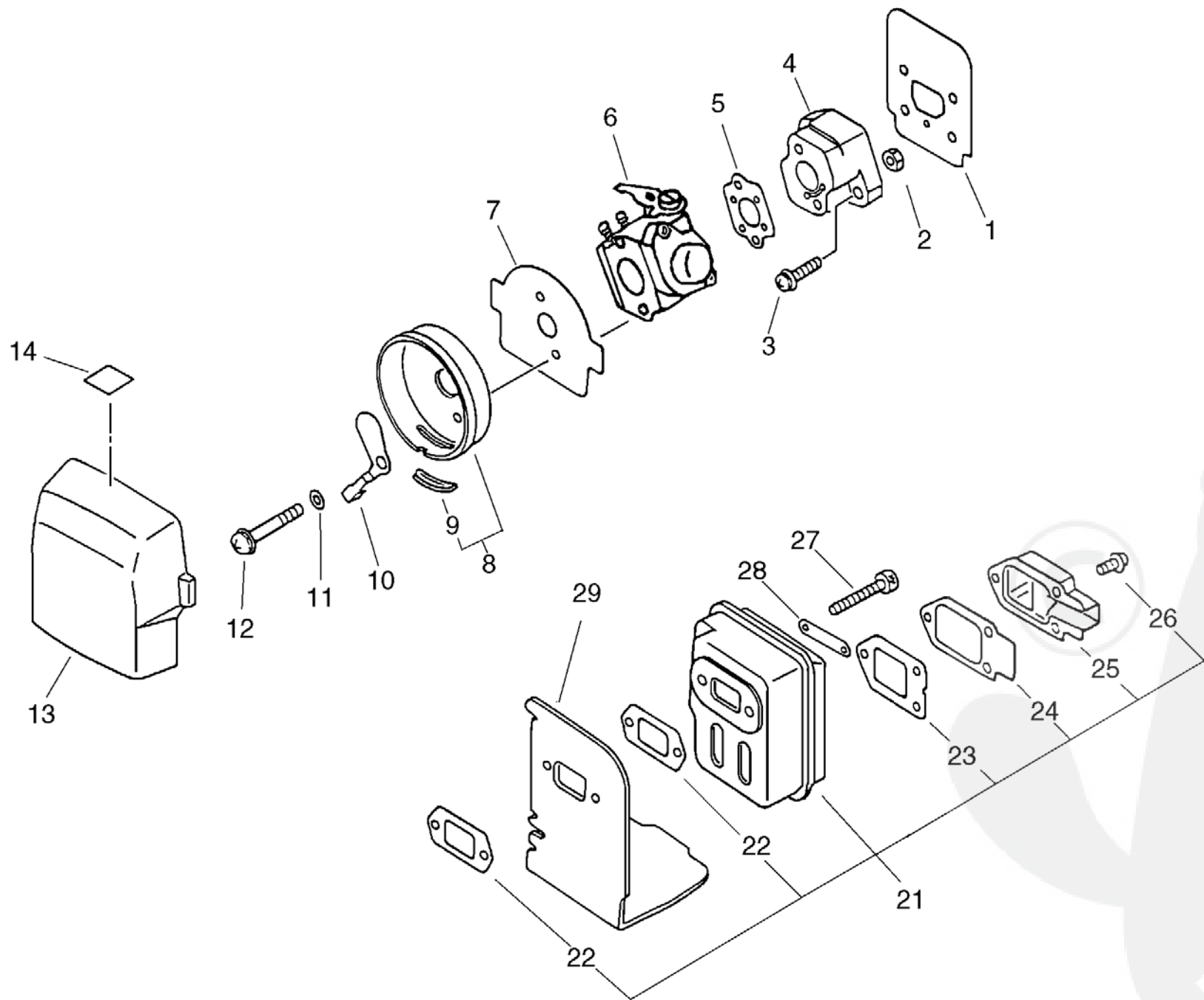
Key	Lv	Part Number	Q'ty	Description	Remarks	Note
15		900253-05020	3	SCREW 5*20	SRM-2015SI	
15		900253-05020	3	SCREW 5*20	SRM-2015SI	
16		X505-000620	1	LABEL, CAUTION	SRM-2015SI	
16		X505-000620	1	LABEL, CAUTION	SRM-2015SI	
18		X502-000031	1	LABEL, ECHO	Sus. by X502-000032	
18		X502-000031	1	LABEL, ECHO	Sus. by X502-000032	
18		X502-000032	1	LABEL, ECHO	SRM-2015SI	
18		X502-000032	1	LABEL, ECHO	SRM-2015SI	
19		A051-000290	1	STARTER, RECOIL	Sus. by A051-000291	
19		A051-000290	1	STARTER, RECOIL	Sus. by A051-000291	
19		A051-000291	1	STARTER, RECOIL	SRM-2015SI	
19		A051-000291	1	STARTER, RECOIL	SRM-2015SI	
19		A051-000292	1	STARTER, RECOIL		
19		A051-000292	1	STARTER, RECOIL		
20	+	177246-11120	1	CLIP, STARTER ROPE	SRM-2015SI	
20	+	177246-11120	1	CLIP, STARTER ROPE	SRM-2015SI	
21	+	177228-27030	1	GRIP, STARTER	SRM-2015SI	
21	+	177228-27030	1	GRIP, STARTER	SRM-2015SI	
22	+	P022-004610	2	SPRING, RETURN	SRM-2015SI	
22	+	P022-004610	2	SPRING, RETURN	SRM-2015SI	
23	+	P022-004620	2	PAWL, STARTER	SRM-2015SI	
23	+	P022-004620	2	PAWL, STARTER	SRM-2015SI	
24	+	P022-004680	1	SPRING, SPIRAL	SRM-2015SI	
24	+	P022-004680	1	SPRING, SPIRAL	SRM-2015SI	
25	+	P022-004600	1	ROPE, STARTER	SRM-2015SI	
25	+	P022-004600	1	ROPE, STARTER	SRM-2015SI	
26	+	P022-004690	1	REEL, ROPE	SRM-2015SI	
26	+	P022-004690	1	REEL, ROPE	SRM-2015SI	

# Parts List

Group:Trimmers/Brushcutters Model:SRM-2015 Section:Starter(SRM-2015SI)( 4)

Key	Lv	Part Number	Q'ty	Description	Remarks	Note
27	+	P022-004660	1	SPRING, RETURN	SRM-2015SI	
27	+	P022-004660	1	SPRING, RETURN	SRM-2015SI	
28	+	P022-004670	1	PAWL, STARTER	SRM-2015SI	
28	+	P022-004670	1	PAWL, STARTER	SRM-2015SI	
29	+	P022-004650	1	COMPLETE, SPRING	Sus. by P022-005230	
29	+	P022-004650	1	COMPLETE, SPRING	Sus. by P022-005230	
29	+	P022-005230	1	COMPLETE, SPRING	SRM-2015SI	
29	+	P022-005230	1	COMPLETE, SPRING	SRM-2015SI	
30	+	P022-004640	1	PLATE, CAM	SRM-2015SI	
30	+	P022-004640	1	PLATE, CAM	SRM-2015SI	
31	+	P022-004630	1	SCREW	SRM-2015SI	
31	+	P022-004630	1	SCREW	SRM-2015SI	
33		900162-04016	2	BOLT, H.S. 4*16	Sus. by 900238-04016	
33		900162-04016	2	BOLT, H.S. 4*16	Sus. by 900238-04016	
33		900238-04016	2	SCREW 4*16	SRM-2015SI	
33		900238-04016	2	SCREW 4*16	SRM-2015SI	
35		V376-000360	1	SPACER	Sus. by V376-000361	
35		V376-000360	1	SPACER	Sus. by V376-000361	
35		V376-000361	1	SPACER	SRM-2015SI	
35		V376-000361	1	SPACER	SRM-2015SI	
40		A052-000130	1	PULLEY,ASM STARTER	SRM-2015SI	
40		A052-000130	1	PULLEY,ASM STARTER	SRM-2015SI	
41	+	P022-004740	2	PAWL, STARTER	SRM-2015SI	
41	+	P022-004740	2	PAWL, STARTER	SRM-2015SI	
42	+	177234-42030	2	SPRING, RETURN	SRM-2015SI	
42	+	177234-42030	2	SPRING, RETURN	SRM-2015SI	
43	+	P022-002100	2	E-RING	SRM-2015SI	
43	+	P022-002100	2	E-RING	SRM-2015SI	

# No.5



# Parts List

Group:Trimmers/Brushcutters Model:SRM-2015 Section:Air Cleaner, Muffler( 5)

Key	Lv	Part Number	Q'ty	Description	Remarks	Note
1		130010-42032	1	GASKET, INTAKE		
1		130010-42032	1	GASKET, INTAKE		
2		900500-00005	2	NUT 5		
2		900500-00005	2	NUT 5		
3		900238-05020	2	SCREW 5*20		
3		900238-05020	2	SCREW 5*20		
4		130017-42031	1	INSULATOR		
4		130017-42031	1	INSULATOR		
5		130016-42031	1	GASKET, INTAKE		
5		130016-42031	1	GASKET, INTAKE		
6		125200-52430	1	CARBURETOR ASSY	Sus. by 125200-52433	
6		125200-52430	1	CARBURETOR ASSY	Sus. by 125200-52433	
6		125200-52431	1	CARBURETOR ASSY	Sus. by 125200-52433	
6		125200-52431	1	CARBURETOR ASSY	Sus. by 125200-52433	
6		125200-52432	1	CARBURETOR C1U-K53A	Sus. by 125200-52433	
6		125200-52432	1	CARBURETOR C1U-K53A	Sus. by 125200-52433	
6		125200-52433	1	CARBURETOR C1U-K53B		
6		125200-52433	1	CARBURETOR C1U-K53B		
7		130319-42030	1	FIXTURE,AIR CLEANER		
7		130319-42030	1	FIXTURE,AIR CLEANER		
8		130301-42030	1	CASE, AIR CLEANER		
8		130301-42030	1	CASE, AIR CLEANER		
9	+	178810-42030	1	GROMMET		
9	+	178810-42030	1	GROMMET		
10		178515-42030	1	SHUTTER, CHOKE	Sus.by 178515-46731	
10		178515-42030	1	SHUTTER, CHOKE	Sus.by 178515-46731	
10		178515-46731	1	SHUTTER, CHOKE		
10		178515-46731	1	SHUTTER, CHOKE		

# Parts List

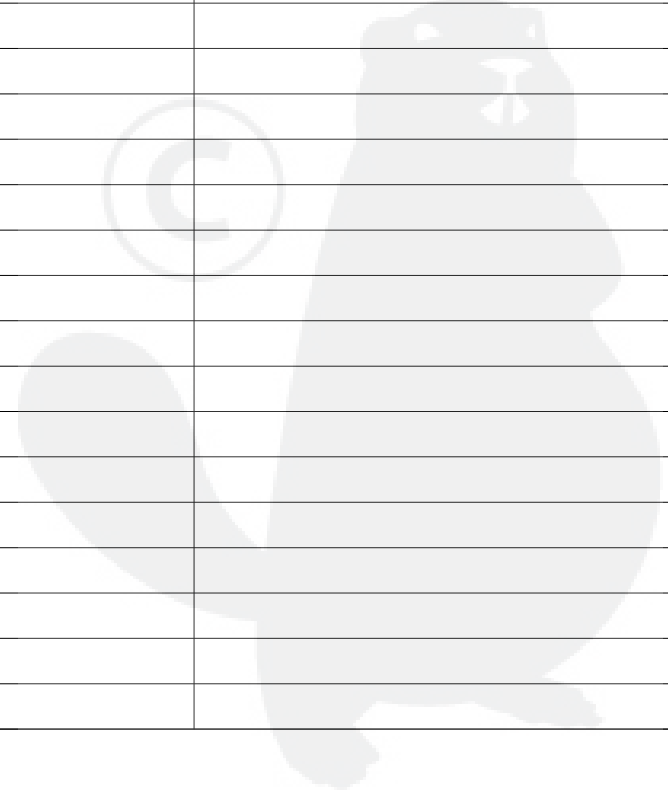
Group:Trimmers/Brushcutters Model:SRM-2015 Section:Air Cleaner, Muffler( 5)

Key	Lv	Part Number	Q'ty	Description	Remarks	Note
11		178516-00830	2	SPACER		
11		178516-00830	2	SPACER		
12		900242-05057	2	SCREW 5*57		
12		900242-05057	2	SCREW 5*57		
13		130310-46730	1	FILTER, AIR		
13		130310-46730	1	FILTER, AIR		
14		890169-47530	1	LABEL, ADJUSTING		
14		890169-47530	1	LABEL, ADJUSTING		
21		P021-000050	1	MUFFLER ASY		
21		P021-000050	1	MUFFLER ASY		
22	+	145510-42031	2	GASKET, MUFFLER	Sus.by V104-000160	
22	+	145510-42031	2	GASKET, MUFFLER	Sus.by V104-000160	
22	+	V104-000160	2	GASKET,EXHAUST		
22	+	V104-000160	2	GASKET,EXHAUST		
23	+	145866-42031	1	GASKET, MUFFLER LID		
23	+	145866-42031	1	GASKET, MUFFLER LID		
24	+	145863-42030	1	HOLDER, SCREEN		
24	+	145863-42030	1	HOLDER, SCREEN		
25	+	145876-42030	1	LID, MUFFLER (B)		
25	+	145876-42030	1	LID, MUFFLER (B)		
26	+	900242-04010	3	SCREW 4*10		
26	+	900242-04010	3	SCREW 4*10		
27		900105-05055	2	BOLT, H.S. 5*55		
27		900105-05055	2	BOLT, H.S. 5*55		
28		900600-00005	2	WASHER 5	Sus. by 145642-04930	
28		900600-00005	2	WASHER 5	Sus. by 145642-04930	
28		145642-04930	1	WASHER		
28		145642-04930	1	WASHER		

# P a r t s L i s t

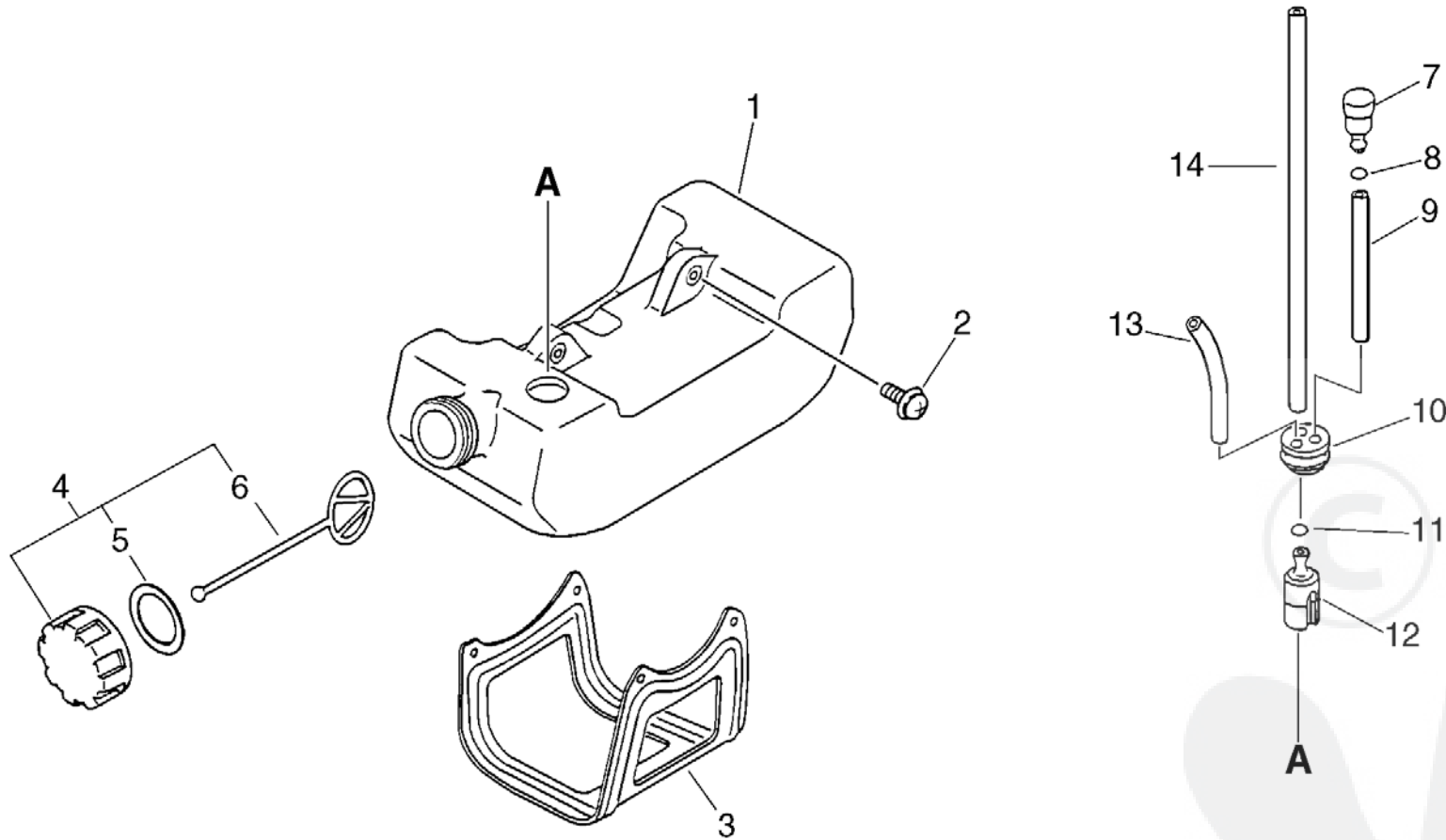
Group:Trimmers/Brushcutters Model:SRM-2015 Section:Air Cleaner, Muffler( 5)

Key	Lv	Part Number	Q'ty	Description	Remarks	Note
29		145631-42030	1	COVER, MUFFLER	Sus. by A320-000251	
29		145631-42030	1	COVER, MUFFLER	Sus. by A320-000251	
29		A320-000250	1	COVER, MUFFLER	Sus. by A320-000251	
29		A320-000250	1	COVER, MUFFLER	Sus. by A320-000251	
29		A320-000251	1	COVER, MUFFLER		
29		A320-000251	1	COVER, MUFFLER		





# No.6



# Parts List

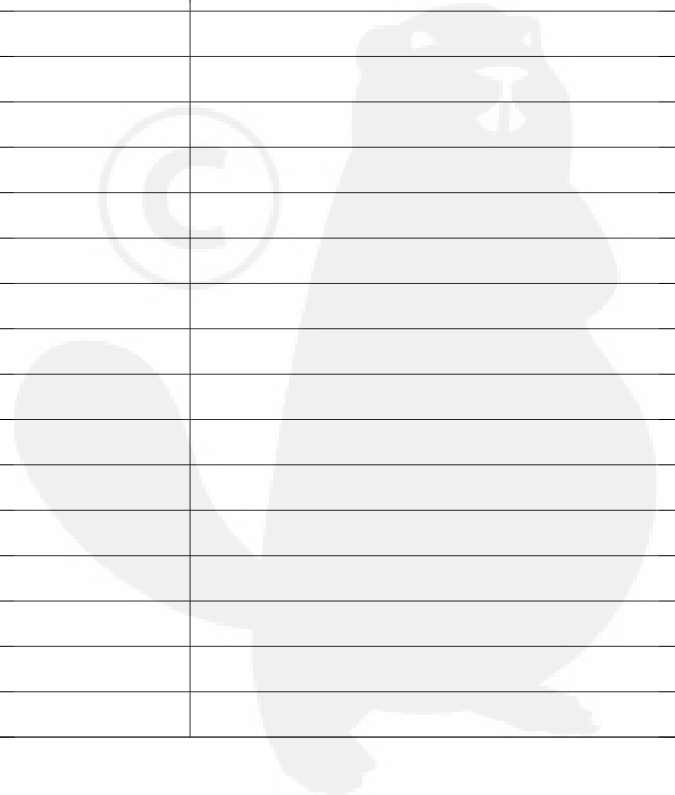
Group:Trimmers/Brushcutters Model:SRM-2015 Section:Fuel Tank( 6)

Key	Lv	Part Number	Q'ty	Description	Remarks	Note
1		131005-44331	1	TANK, FUEL	Sus. by 131005-44332	
1		131005-44331	1	TANK, FUEL	Sus. by 131005-44332	
1		131005-44332	1	TANK, FUEL		
1		131005-44332	1	TANK, FUEL		
2		900243-05016	2	SCREW 5*16		
2		900243-05016	2	SCREW 5*16		
3		305110-42030	1	STAND (BL)		
3		305110-42030	1	STAND (BL)		
4		131004-55530	1	CAP ASSY, FUEL TANK		
4		131004-55530	1	CAP ASSY, FUEL TANK		
5	+	131016-55830	1	GASKET, FUEL CAP		
5	+	131016-55830	1	GASKET, FUEL CAP		
6	+	131051-56030	1	CLIP, FUEL CAP		
6	+	131051-56030	1	CLIP, FUEL CAP		
7		131300-56430	1	VALVE, CHECK		
7		131300-56430	1	VALVE, CHECK		
8		130111-00530	1	CLIP		
8		130111-00530	1	CLIP		
9		131312-44330	1	PIPE, 3*5*70L		
9		131312-44330	1	PIPE, 3*5*70L		
9		V471-001200	1	PIPE		
9		V471-001200	1	PIPE		
10		132115-46730	1	GROMMET, FUEL		
10		132115-46730	1	GROMMET, FUEL		
11		132013-09820	1	CLIP		
11		132013-09820	1	CLIP		
12		131205-07320	1	STRAINER, FUEL		
12		131205-07320	1	STRAINER, FUEL		

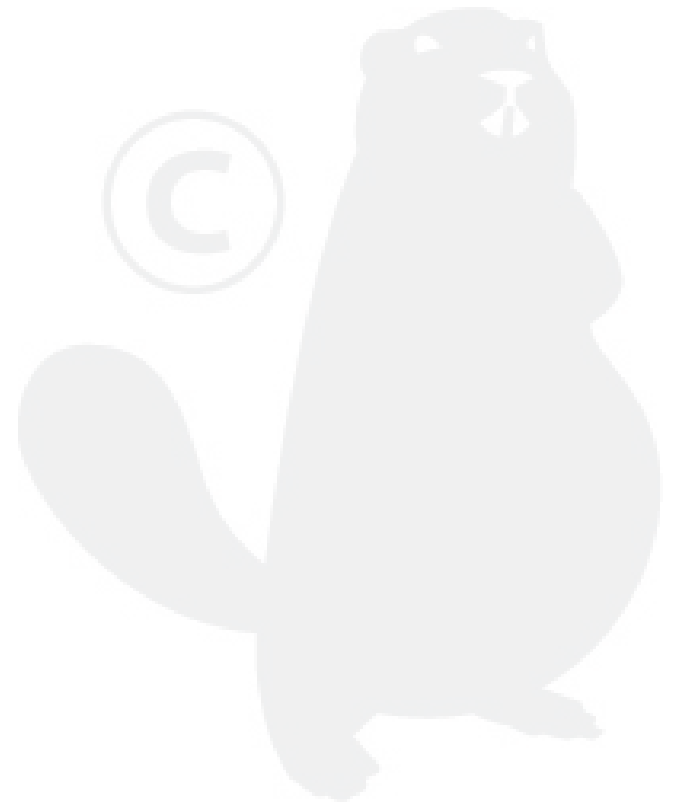
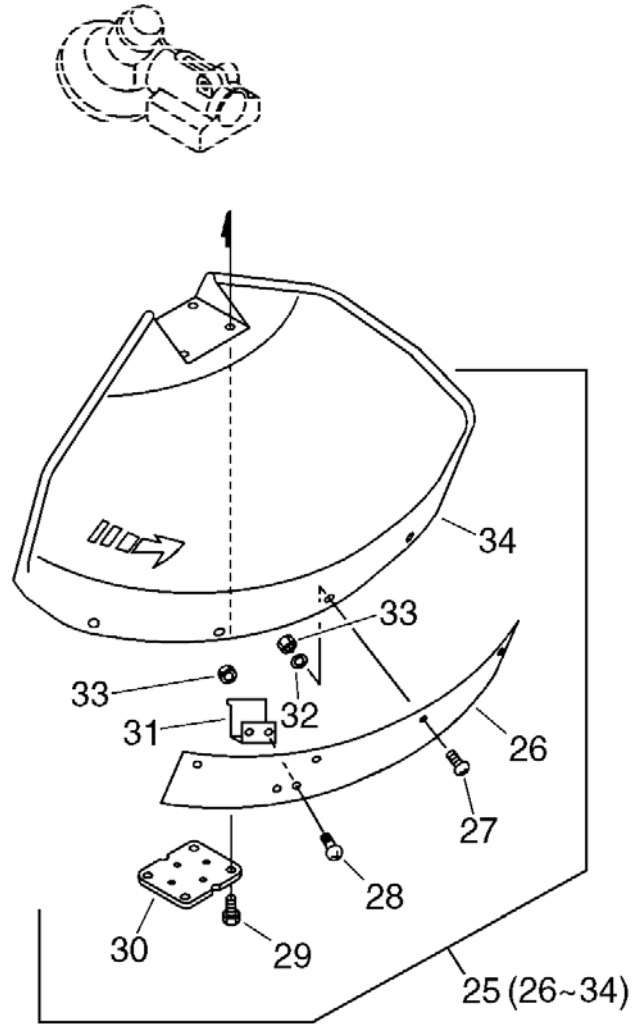
# P a r t s L i s t

Group:Trimmers/Brushcutters Model:SRM-2015 Section:Fuel Tank( 6)

Key	Lv	Part Number	Q'ty	Description	Remarks	Note
13		132010-56330	1	PIPE 3*6*90		
13		132010-56330	1	PIPE 3*6*90		
14		132010-13930	1	PIPE, FUEL	Sus. by V471-001190	
14		132010-13930	1	PIPE, FUEL	Sus. by V471-001190	
14		V471-001190	1	PIPE		
14		V471-001190	1	PIPE		



# No.7

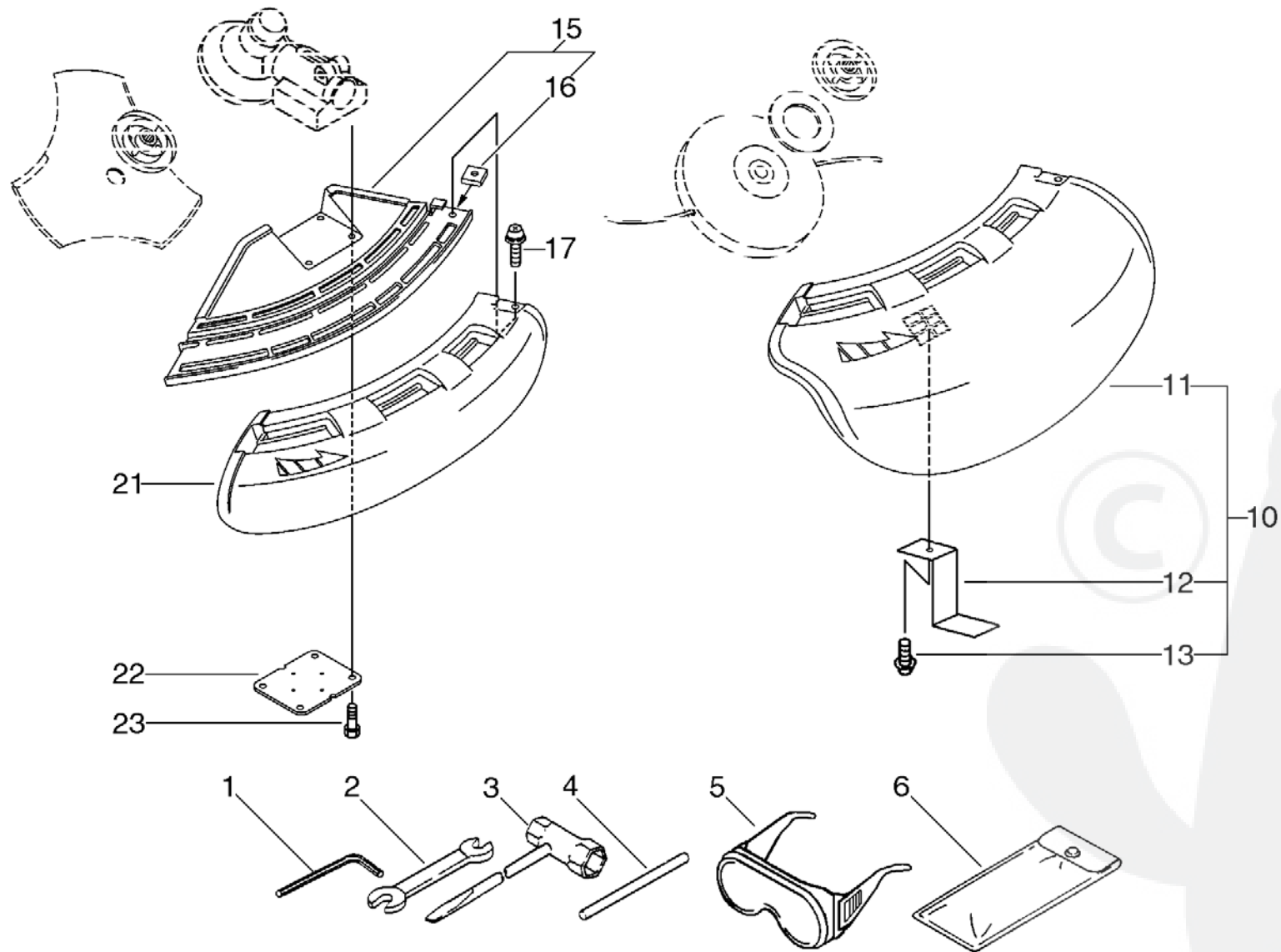


# P a r t s L i s t

Group:Trimmers/Brushcutters Model:SRM-2015 Section:Shield(Sr/Nr 035852 and before/SRM-2015)( 7)

Key	Lv	Part Number	Q'ty	Description	Remarks	Note
25		699000-52930	1	SHIELD ASY	Sus. by 699000-52931	
25		699000-52930	1	SHIELD ASY	Sus. by 699000-52931	
25		699000-52931	1	SHIELD ASY	Sr/Nr 035852 and before/SRM-2015	
25		699000-52931	1	SHIELD ASY	Sr/Nr 035852 and before/SRM-2015	
26	+	699013-52130	1	PLATE, SHIELD	Sr/Nr 035852 and before/SRM-2015	
26	+	699013-52130	1	PLATE, SHIELD	Sr/Nr 035852 and before/SRM-2015	
27	+	900162-05018	4	BOLT, H.S. 5*18	Sr/Nr 035852 and before/SRM-2015	
27	+	900162-05018	4	BOLT, H.S. 5*18	Sr/Nr 035852 and before/SRM-2015	
28	+	900162-05014	2	BOLT, H.S. 5*14	Sr/Nr 035852 and before/SRM-2015	
28	+	900162-05014	2	BOLT, H.S. 5*14	Sr/Nr 035852 and before/SRM-2015	
29	+	900162-05025	4	BOLT, H.S. 5*25		
29	+	900162-05025	4	BOLT, H.S. 5*25		
30	+	699013-56830	1	PLATE, SHIELD		
30	+	699013-56830	1	PLATE, SHIELD		
31	+	699016-52130	1	KNIFE, CORD	Sus. by 699016-54530	
31	+	699016-52130	1	KNIFE, CORD	Sus. by 699016-54530	
31	+	699016-54530	1	KNIFE, CORD	Sr/Nr 035852 and before/SRM-2015	
31	+	699016-54530	1	KNIFE, CORD	Sr/Nr 035852 and before/SRM-2015	
32	+	900603-00005	4	WASHER 5	Sr/Nr 035852 and before/SRM-2015	
32	+	900603-00005	4	WASHER 5	Sr/Nr 035852 and before/SRM-2015	
33	+	900500-00005	6	NUT 5	Sr/Nr 035852 and before/SRM-2015	
33	+	900500-00005	6	NUT 5	Sr/Nr 035852 and before/SRM-2015	
34	+	699010-52930	1	SHIELD, BLADE	Sus. by 699010-52931	
34	+	699010-52930	1	SHIELD, BLADE	Sus. by 699010-52931	
34	+	699010-52931	1	SHIELD, BLADE	Sr/Nr 035852 and before/SRM-2015	
34	+	699010-52931	1	SHIELD, BLADE	Sr/Nr 035852 and before/SRM-2015	

# No.8



# Parts List

Group:Trimmers/Brushcutters Model:SRM-2015 Section:Shield(Sr/Nr 035853 and after/SRM-2015,SRM-2015SI), Tools( 8)

Key	Lv	Part Number	Q'ty	Description	Remarks	Note
1		895610-00130	1	L-WRENCH (4MM)		
1		895610-00130	1	L-WRENCH (4MM)		
2		895112-00330	1	SPANNER 8*10		
2		895112-00330	1	SPANNER 8*10		
3		895410-08030	1	WRENCH, W/S. DRIVER	Sus. by X602-000020	
3		895410-08030	1	WRENCH, W/S. DRIVER	Sus. by X602-000020	
3		X602-000020	1	TOOL, WRENCH		
3		X602-000020	1	TOOL, WRENCH		
4		897518-01131	1	LOCKING TOOL		
4		897518-01131	1	LOCKING TOOL		
5		899580-40930	1	GOGGLE	Sus. by P021-002861	
5		899580-40930	1	GOGGLE	Sus. by P021-002861	
5		899580-68730	1	SAFETY GLASSES	Sus. by P021-002861	
5		899580-68730	1	SAFETY GLASSES	Sus. by P021-002861	
5		X690-000030	1	GOGGLES	Sus. by P021-002861	
5		X690-000030	1	GOGGLES	Sus. by P021-002861	
5		P021-002861	1	GOGGLES		
5		P021-002861	1	GOGGLES		
6		898510-39130	1	BAG, TOOL		
6		898510-39130	1	BAG, TOOL		
10		P021-002620	1	SHIELD, BLADE (W/KNIFE)	Sr/Nr 035853 and after/SRM-2015	
10		P021-002620	1	SHIELD, BLADE (W/KNIFE)	Sr/Nr 035853 and after/SRM-2015	
10		P021-002620	1	SHIELD, BLADE (W/KNIFE)	SRM-2015SI	
10		P021-002620	1	SHIELD, BLADE (W/KNIFE)	SRM-2015SI	
11	+	C550-000080	1	SHIELD, BLADE	Sr/Nr 035853 and after/SRM-2015	
11	+	C550-000080	1	SHIELD, BLADE	Sr/Nr 035853 and after/SRM-2015	
11	+	C550-000080	1	SHIELD, BLADE	SRM-2015SI	
11	+	C550-000080	1	SHIELD, BLADE	SRM-2015SI	

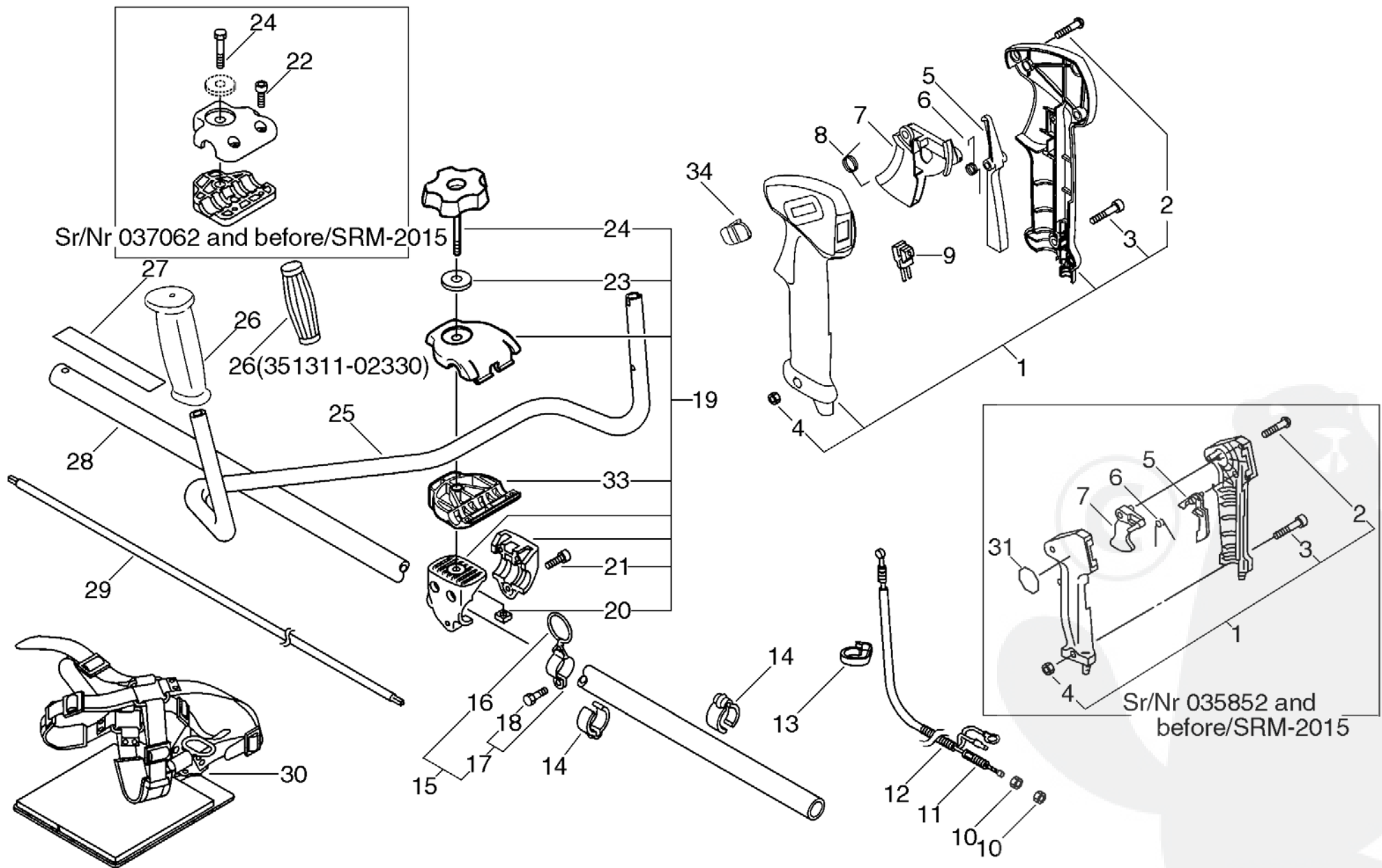
# P a r t s L i s t

Group:Trimmers/Brushcutters Model:SRM-2015 Section:Shield(Sr/Nr 035853 and after/SRM-2015,SRM-2015SI), Tools( 8)

Key	Lv	Part Number	Q'ty	Description	Remarks	Note
12	+	C554-000000	1	KNIFE,CORD	Sr/Nr 035853 and after/SRM-2015	
12	+	C554-000000	1	KNIFE,CORD	Sr/Nr 035853 and after/SRM-2015	
12	+	C554-000000	1	KNIFE,CORD	SRM-2015SI	
12	+	C554-000000	1	KNIFE,CORD	SRM-2015SI	
13	+	900252-05012	1	SCREW 5*12	Sr/Nr 035853 and after/SRM-2015	
13	+	900252-05012	1	SCREW 5*12	Sr/Nr 035853 and after/SRM-2015	
13	+	900252-05012	1	SCREW 5*12	SRM-2015SI	
13	+	900252-05012	1	SCREW 5*12	SRM-2015SI	
15		C550-000100	1	SHIELD,BLADE	Sr/Nr 035853 and after/SRM-2015	
15		C550-000100	1	SHIELD,BLADE	Sr/Nr 035853 and after/SRM-2015	
15		C550-000100	1	SHIELD,BLADE	SRM-2015SI	
15		C550-000100	1	SHIELD,BLADE	SRM-2015SI	
16	+	900565-00005	1	NUT	Sr/Nr 035853 and after/SRM-2015	
16	+	900565-00005	1	NUT	Sr/Nr 035853 and after/SRM-2015	
16	+	900565-00005	1	NUT	SRM-2015SI	
16	+	900565-00005	1	NUT	SRM-2015SI	
17		900242-05018	1	SCREW 5*18	Sr/Nr 035853 and after/SRM-2015	
17		900242-05018	1	SCREW 5*18	Sr/Nr 035853 and after/SRM-2015	
17		900242-05018	1	SCREW 5*18	SRM-2015SI	
17		900242-05018	1	SCREW 5*18	SRM-2015SI	
21		C550-000090	1	SHIELD,BLADE	Sr/Nr 035853 and after/SRM-2015	
21		C550-000090	1	SHIELD,BLADE	Sr/Nr 035853 and after/SRM-2015	
21		C550-000090	1	SHIELD,BLADE	SRM-2015SI	
21		C550-000090	1	SHIELD,BLADE	SRM-2015SI	
22		699013-56830	1	PLATE, SHIELD		
22		699013-56830	1	PLATE, SHIELD		
23		900162-05025	4	BOLT, H.S. 5*25		
23		900162-05025	4	BOLT, H.S. 5*25		



# No.9



# Parts List

Group:Trimmers/Brushcutters Model:SRM-2015 Section:U-Handle( 9)

Key	Lv	Part Number	Q'ty	Description	Remarks	Note
1		351102-47530	1	GRIP ASY, F-HANDLE	Sr/Nr 035852 and before/SRM-2015	
1		351102-47530	1	GRIP ASY, F-HANDLE	Sr/Nr 035852 and before/SRM-2015	
1		P021-002610	1	GRIP ASY, F-HANDLE	Sr/Nr 035853 and after/SRM-2015 Sus. by P021-002612	
1		P021-002610	1	GRIP ASY, F-HANDLE	Sr/Nr 035853 and after/SRM-2015 Sus. by P021-002612	
1		P021-002610	1	GRIP ASY, F-HANDLE	SRM-2015SI Sus. by P021-002612	
1		P021-002610	1	GRIP ASY, F-HANDLE	SRM-2015SI Sus. by P021-002612	
1		P021-002611	1	GRIP ASY, F-HANDLE	SRM-2015SI Sus. by P021-002612	
1		P021-002611	1	GRIP ASY, F-HANDLE	SRM-2015SI Sus. by P021-002612	
1		P021-002612	1	GRIP ASY, F-HANDLE		
1		P021-002612	1	GRIP ASY, F-HANDLE		
2	+	900246-03025	4	SCREW 3*25	Sr/Nr 035852 and before/SRM-2015	
2	+	900246-03025	4	SCREW 3*25	Sr/Nr 035852 and before/SRM-2015	
2	+	900246-04016	3	SCREW 4*16	Sus. by 900253-04016	
2	+	900246-04016	3	SCREW 4*16	Sus. by 900253-04016	
2	+	900253-04016	3	SCREW 4*16	Sr/Nr 035853 and after/SRM-2015	
2	+	900253-04016	3	SCREW 4*16	Sr/Nr 035853 and after/SRM-2015	
2	+	900253-04016	3	SCREW 4*16	SRM-2015SI	
2	+	900253-04016	3	SCREW 4*16	SRM-2015SI	
3	+	900220-05030	1	SCREW 5*30		
3	+	900220-05030	1	SCREW 5*30		
4	+	900500-00005	1	NUT 5		
4	+	900500-00005	1	NUT 5		
5		178012-05960	1	LOCKOUT, THROTTLE	Sr/Nr 035852 and before/SRM-2015	
5		178012-05960	1	LOCKOUT, THROTTLE	Sr/Nr 035852 and before/SRM-2015	
5		C460-000010	1	LOCKOUT, THROTTLE	Sr/Nr 035853 and after/SRM-2015	
5		C460-000010	1	LOCKOUT, THROTTLE	Sr/Nr 035853 and after/SRM-2015	
5		C460-000010	1	LOCKOUT, THROTTLE	Sus. by C460-000011	
5		C460-000010	1	LOCKOUT, THROTTLE	Sus. by C460-000011	

# P a r t s L i s t

Group:Trimmers/Brushcutters Model:SRM-2015 Section:U-Handle( 9)

Key	Lv	Part Number	Q'ty	Description	Remarks	Note
5		C460-000011	1	LOCKOUT, THROTTLE	SRM-2015SI	
5		C460-000011	1	LOCKOUT, THROTTLE	SRM-2015SI	
6		178013-35631	1	SPRING, THR. LOCK	Sr/Nr 035852 and before/SRM-2015	
6		178013-35631	1	SPRING, THR. LOCK	Sr/Nr 035852 and before/SRM-2015	
6		V452-000050	1	SPRING, TORSION	Sr/Nr 035853 to 048224/SRM-2015	
6		V452-000050	1	SPRING, TORSION	Sr/Nr 035853 to 048224/SRM-2015	
6		V452-000050	1	SPRING, TORSION	Sr/Nr 35007346 and before/SRM-2015SI	
6		V452-000050	1	SPRING, TORSION	Sr/Nr 35007346 and before/SRM-2015SI	
6		V452-000130	1	SPRING, TORSION	Sr/Nr 048225 and after/SRM-2015	
6		V452-000130	1	SPRING, TORSION	Sr/Nr 048225 and after/SRM-2015	
6		V452-000130	1	SPRING, TORSION	Sr/Nr 35007347 and after/SRM-2015SI	
6		V452-000130	1	SPRING, TORSION	Sr/Nr 35007347 and after/SRM-2015SI	
7		178010-05960	1	CONTROL, THROTTLE	Sr/Nr 035852 and before/SRM-2015	
7		178010-05960	1	CONTROL, THROTTLE	Sr/Nr 035852 and before/SRM-2015	
7		C450-000020	1	TRIGGER, THROTTLE	Sr/Nr 035853 and after/SRM-2015 Sus. by C450-000022	
7		C450-000020	1	TRIGGER, THROTTLE	Sr/Nr 035853 and after/SRM-2015 Sus. by C450-000022	
7		C450-000020	1	TRIGGER, THROTTLE	SRM-2015SI Sus. by C450-000022	
7		C450-000020	1	TRIGGER, THROTTLE	SRM-2015SI Sus. by C450-000022	
7		C450-000021	1	TRIGGER, THROTTLE	Sus. by C450-000022	
7		C450-000021	1	TRIGGER, THROTTLE	Sus. by C450-000022	
7		C450-000022	1	TRIGGER, THROTTLE		
7		C450-000022	1	TRIGGER, THROTTLE		
8		V452-000060	1	SPRING, TORSION	Sr/Nr 035853 and after/SRM-2015	
8		V452-000060	1	SPRING, TORSION	Sr/Nr 035853 and after/SRM-2015	
8		V452-000060	1	SPRING, TORSION	SRM-2015SI	
8		V452-000060	1	SPRING, TORSION	SRM-2015SI	
9		163401-49230	1	SWITCH, IGNITION		
9		163401-49230	1	SWITCH, IGNITION		

# P a r t s L i s t

Group:Trimmers/Brushcutters Model:SRM-2015 Section:U-Handle( 9)

Key	Lv	Part Number	Q'ty	Description	Remarks	Note
10		900502-00006	2	NUT 6 (3N)		
10		900502-00006	2	NUT 6 (3N)		
11		178001-47530	1	WIRE, THROTTLE	Sr/Nr 035852 and before/SRM-2015	
11		178001-47530	1	WIRE, THROTTLE	Sr/Nr 035852 and before/SRM-2015	
11		V430-000410	1	CABLE,BOWDEN	Sr/Nr 035853 and after/SRM-2015	
11		V430-000410	1	CABLE,BOWDEN	Sr/Nr 035853 and after/SRM-2015	
11		V430-000410	1	CABLE,BOWDEN	SRM-2015SI	
11		V430-000410	1	CABLE,BOWDEN	SRM-2015SI	
12		178127-47530	1	TUBE		
12		178127-47530	1	TUBE		
13		159112-09960	1	CLIP	Sus. by 159112-09961	
13		159112-09960	1	CLIP	Sus. by 159112-09961	
13		159112-09961	1	CLIP		
13		159112-09961	1	CLIP		
14		224924-52130	2	CLIP		
14		224924-52130	2	CLIP		
15		301200-21330	1	HOOK AS'Y		
15		301200-21330	1	HOOK AS'Y		
16	+	301015-05330	1	HOOK, BAND		
16	+	301015-05330	1	HOOK, BAND		
17	+	301205-21330	1	HOOK		
17	+	301205-21330	1	HOOK		
18	++	900105-05012	1	BOLT, H.S. 5*12		
18	++	900105-05012	1	BOLT, H.S. 5*12		
19		351301-52130	1	BRACKET ASY, HANDLE	Sr/Nr 037062 and before/SRM-2015	
19		351301-52130	1	BRACKET ASY, HANDLE	Sr/Nr 037062 and before/SRM-2015	
19		P021-002750	1	BRACKET ASY, HANDLE	Sr/Nr 037063 and after/SRM-2015	
19		P021-002750	1	BRACKET ASY, HANDLE	Sr/Nr 037063 and after/SRM-2015	

# P a r t s L i s t

Group:Trimmers/Brushcutters Model:SRM-2015 Section:U-Handle( 9)

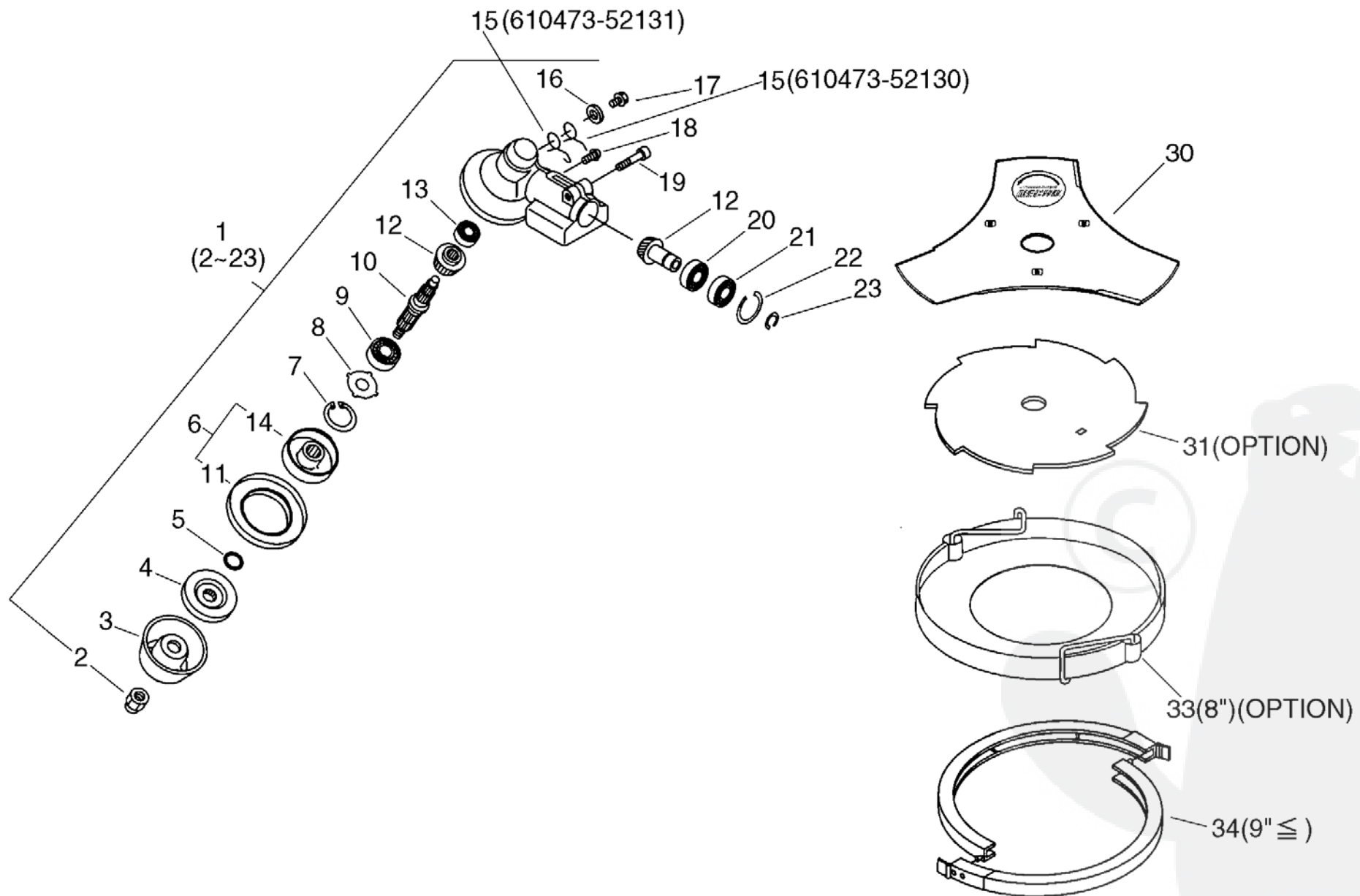
Key	Lv	Part Number	Q'ty	Description	Remarks	Note
19		P021-002750	1	BRACKET ASY, HANDLE	Sus. by P021-002751	
19		P021-002750	1	BRACKET ASY, HANDLE	Sus. by P021-002751	
19		P021-002751	1	BRACKET ASY, HANDLE	SRM-2015SI	
19		P021-002751	1	BRACKET ASY, HANDLE	SRM-2015SI	
20	+	900565-50008	1	NUT		
20	+	900565-50008	1	NUT		
21	+	900162-05030	3	BOLT, H.S. 5*30		
21	+	900162-05030	3	BOLT, H.S. 5*30		
22	+	900162-05020	2	BOLT, H.S. 5*20	Sr/Nr 037062 and before/SRM-2015	
22	+	900162-05020	2	BOLT, H.S. 5*20	Sr/Nr 037062 and before/SRM-2015	
23	+	605014-54230	1	WASHER		
23	+	605014-54230	1	WASHER		
24	+	351421-52130	1	BOLT	Sr/Nr 037062 and before/SRM-2015	
24	+	351421-52130	1	BOLT	Sr/Nr 037062 and before/SRM-2015	
24	+	V299-000110	1	KNOB, FASTENER	Sr/Nr 037063 and after/SRM-2015	
24	+	V299-000110	1	KNOB, FASTENER	Sr/Nr 037063 and after/SRM-2015	
24	+	V299-000110	1	KNOB, FASTENER	SRM-2015SI	
24	+	V299-000110	1	KNOB, FASTENER	SRM-2015SI	
33	+	C423-000041	1	FIXTURE, HANDLE		
33	+	C423-000041	1	FIXTURE, HANDLE		
25		351214-52130	1	HANDLE, FRONT	Sus. by C400-000000	
25		351214-52130	1	HANDLE, FRONT	Sus. by C400-000000	
25		C400-000000	1	HANDLE, FRONT		
25		C400-000000	1	HANDLE, FRONT		
26		351311-02330	1	GRIP, HANDLE	Sr/Nr 035852 and before/SRM-2015	
26		351311-02330	1	GRIP, HANDLE	Sr/Nr 035852 and before/SRM-2015	
26		C403-000030	1	GRIP, HANDLE	Sus. by C403-000031	
26		C403-000030	1	GRIP, HANDLE	Sus. by C403-000031	

# P a r t s L i s t

Group:Trimmers/Brushcutters Model:SRM-2015 Section:U-Handle( 9)

Key	Lv	Part Number	Q'ty	Description	Remarks	Note
26		C403-000031	1	GRIP,HANDLE	Sr/Nr 035853 and after/SRM-2015	
26		C403-000031	1	GRIP,HANDLE	Sr/Nr 035853 and after/SRM-2015	
26		C403-000030	1	GRIP,HANDLE	Sus. by C403-000031	
26		C403-000030	1	GRIP,HANDLE	Sus. by C403-000031	
26		C403-000031	1	GRIP,HANDLE	SRM-2015SI	
26		C403-000031	1	GRIP,HANDLE	SRM-2015SI	
27		890617-46830	1	LABEL, CAUTION	Sus. by 890617-43130	
27		890617-46830	1	LABEL, CAUTION	Sus. by 890617-43130	
27		890617-43130	1	LABEL, CAUTION		
27		890617-43130	1	LABEL, CAUTION		
28		610206-28230	1	HOUSING AS'Y D,SFT.		
28		610206-28230	1	HOUSING AS'Y D,SFT.		
29		610018-27830	1	SHAFT, DRIVE		
29		610018-27830	1	SHAFT, DRIVE		
30		301001-56830	1	HARNESS, SHOULDER	Sus. by 301001-56831	
30		301001-56830	1	HARNESS, SHOULDER	Sus. by 301001-56831	
30		301001-56831	1	HARNESS, SHOULDER		
30		301001-56831	1	HARNESS, SHOULDER		
31		890157-39130	1	LABEL, SWITCH	Sr/Nr 035852 and before/SRM-2015	
31		890157-39130	1	LABEL, SWITCH	Sr/Nr 035852 and before/SRM-2015	
34		C463-000000	1	KNOB,LATCH	Sr/Nr 048225 and after/SRM-2015	
34		C463-000000	1	KNOB,LATCH	Sr/Nr 048225 and after/SRM-2015	
34		C463-000000	1	KNOB,LATCH	Sr/Nr 35007347 and after/SRM-2015SI	
34		C463-000000	1	KNOB,LATCH	Sr/Nr 35007347 and after/SRM-2015SI	

# No.10



# P a r t s L i s t

Group:Trimmers/Brushcutters Model:SRM-2015 Section:Gear Case(U-Handle Type), Blade( 10)

Key	Lv	Part Number	Q'ty	Description	Remarks	Note
1		610400-56830	1	HOUSING ASY, GEAR	Sus. by 610400-56832	
1		610400-56830	1	HOUSING ASY, GEAR	Sus. by 610400-56832	
1		610400-56831	1	HOUSING ASY, GEAR	Sus. by 610400-56832	
1		610400-56831	1	HOUSING ASY, GEAR	Sus. by 610400-56832	
1		610400-56832	1	HOUSING ASY, GEAR		
1		610400-56832	1	HOUSING ASY, GEAR		
2	+	610320-52130	1	NUT 10		
2	+	610320-52130	1	NUT 10		
3	+	699229-56830	1	PLATE, COVER		
3	+	699229-56830	1	PLATE, COVER		
4	+	610314-52130	1	PLATE, ADAPTER (L)		
4	+	610314-52130	1	PLATE, ADAPTER (L)		
5	+	900720-00012	1	O-RING 12		
5	+	900720-00012	1	O-RING 12		
6	+	610313-52930	1	PLATE, ADAPTER (U)	Sus. by C535-000001	
6	+	610313-52930	1	PLATE, ADAPTER (U)	Sus. by C535-000001	
6	+	C535-000000	1	FIXTURE, BRADE	Sus. by C535-000001	
6	+	C535-000000	1	FIXTURE, BRADE	Sus. by C535-000001	
6	+	C535-000001	1	FIXTURE, BRADE		
6	+	C535-000001	1	FIXTURE, BRADE		
11	++	610352-56830	1	PLATE, CUP		
11	++	610352-56830	1	PLATE, CUP		
14	++	C535-000010	1	FIXTURE, BRADE	Sus. by C535-000011	
14	++	C535-000010	1	FIXTURE, BRADE	Sus. by C535-000011	
14	++	C535-000011	1	FIXTURE, BRADE		
14	++	C535-000011	1	FIXTURE, BRADE		
7	+	900702-00032	1	CIRCLIP 32		
7	+	900702-00032	1	CIRCLIP 32		



# P a r t s L i s t

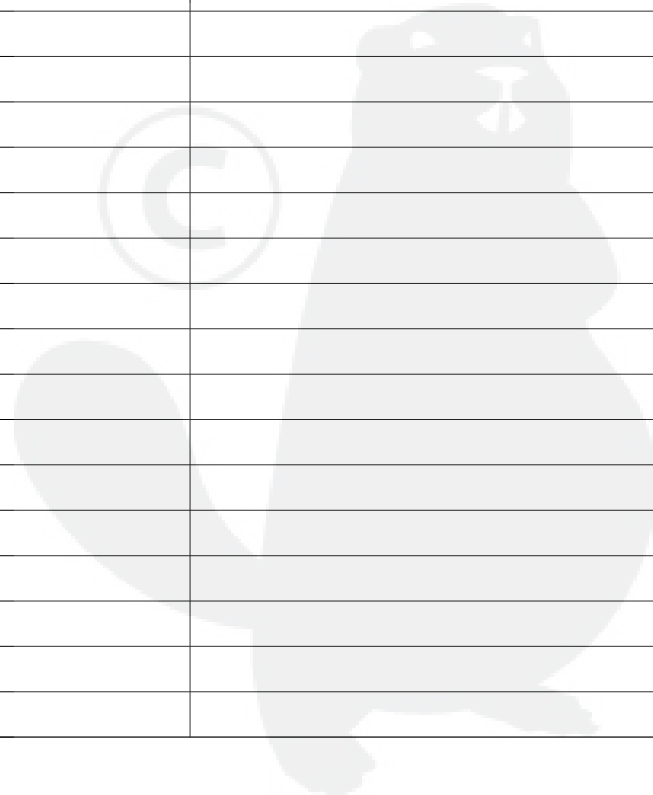
Group:Trimmers/Brushcutters Model:SRM-2015 Section:Gear Case(U-Handle Type), Blade( 10)

Key	Lv	Part Number	Q'ty	Description	Remarks	Note
8	+	610444-56830	1	WASHER		
8	+	610444-56830	1	WASHER		
9	+	900812-06201	1	BEARING, BALL 6201		
9	+	900812-06201	1	BEARING, BALL 6201		
10	+	610310-56830	1	SHAFT, P.T.O.		
10	+	610310-56830	1	SHAFT, P.T.O.		
12	+	610300-40830	1	GEAR SET		
12	+	610300-40830	1	GEAR SET		
13	+	900810-00626	1	BEARING, BALL 626		
13	+	900810-00626	1	BEARING, BALL 626		
15	+	610473-52130	1	SPRING, TORSION	Can be used on the 610313-52930 only/SRM-2015	
15	+	610473-52130	1	SPRING, TORSION	Can be used on the 610313-52930 only/SRM-2015	
15	+	610473-52131	1	SPRING, TORSION	Can be used on the C535-000000,000001 /SRM-2015	
15	+	610473-52131	1	SPRING, TORSION	Can be used on the C535-000000,000001 /SRM-2015	
15	+	610473-52131	1	SPRING, TORSION	SRM-2015SI	
15	+	610473-52131	1	SPRING, TORSION	SRM-2015SI	
16	+	900603-50008	1	WASHER		
16	+	900603-50008	1	WASHER		
17	+	610434-50030	1	BOLT 8* 6	Sus. by 610434-50031	
17	+	610434-50030	1	BOLT 8* 6	Sus. by 610434-50031	
17	+	610434-50031	1	BOLT 8* 8		
17	+	610434-50031	1	BOLT 8* 8		
18	+	900242-05010	1	SCREW 5*10		
18	+	900242-05010	1	SCREW 5*10		
19	+	900162-06025	1	BOLT, H.S. 6*25		
19	+	900162-06025	1	BOLT, H.S. 6*25		
20	+	900855-06900	1	BEARING, BALL 6900		
20	+	900855-06900	1	BEARING, BALL 6900		

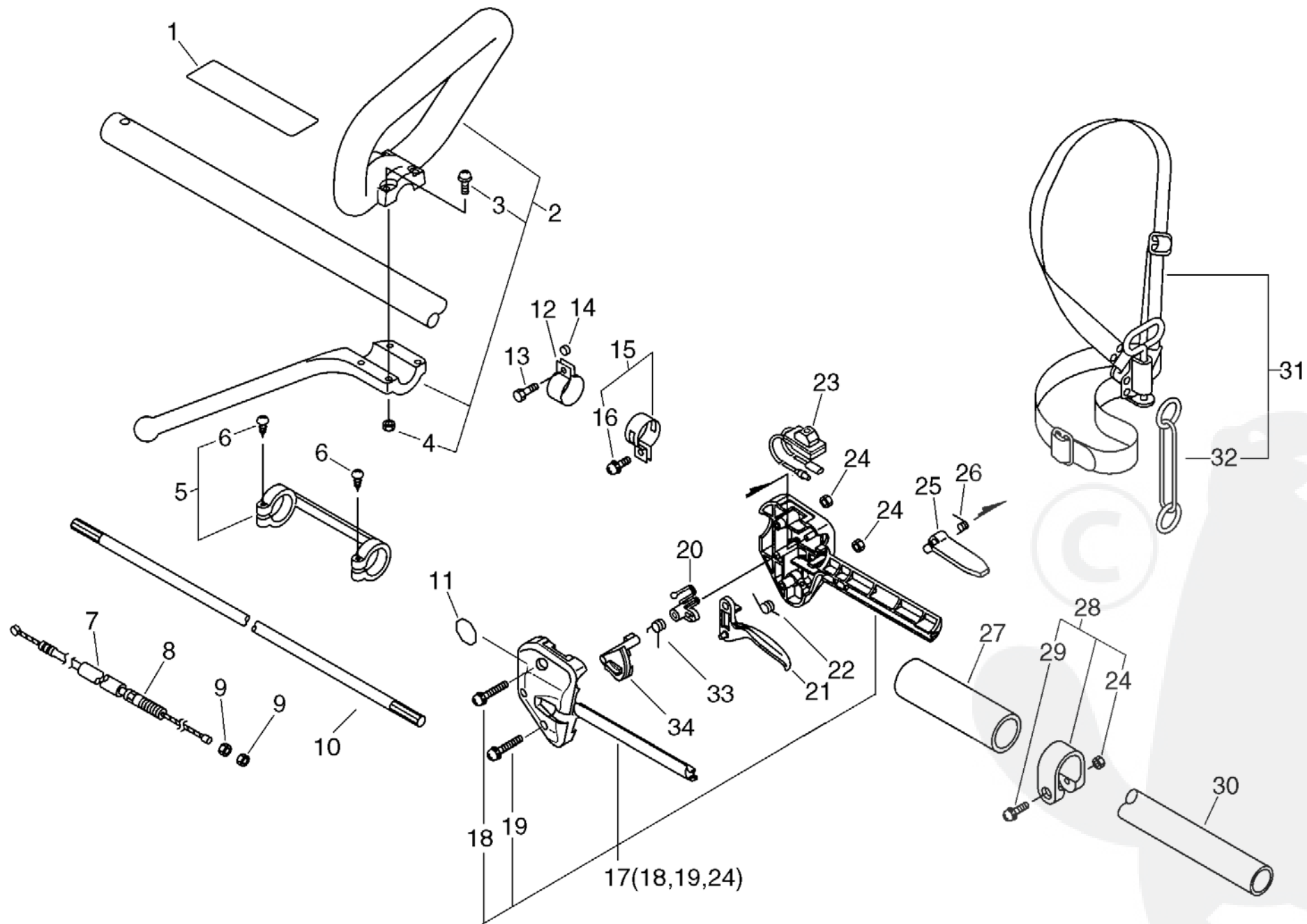
# Parts List

Group:Trimmers/Brushcutters Model:SRM-2015 Section:Gear Case(U-Handle Type), Blade( 10)

Key	Lv	Part Number	Q'ty	Description	Remarks	Note
21	+	900858-06900	1	BEARING, BALL 6900Z		
21	+	900858-06900	1	BEARING, BALL 6900Z		
22	+	900702-00022	1	CIRCLIP 22		
22	+	900702-00022	1	CIRCLIP 22		
23	+	900706-00010	1	CIRCLIP 10		
23	+	900706-00010	1	CIRCLIP 10		
30		X405-000010	1	SAW,BUSH CUTTER	Sus. by X405-000011	
30		X405-000010	1	SAW,BUSH CUTTER	Sus. by X405-000011	
30		X405-000011	1	SAW,BUSH CUTTER		
30		X405-000011	1	SAW,BUSH CUTTER		
34		898523-47130	1	SCABBARD, BLADE	Sus. by P021-007470	
34		898523-47130	1	SCABBARD, BLADE	Sus. by P021-007470	
34		P021-007470	1	SCABBARD, BLADE		
34		P021-007470	1	SCABBARD, BLADE		
31		696001-48030	1	BLADE, 8-CUTTER	Sus. by 696001-48031	
31		696001-48030	1	BLADE, 8-CUTTER	Sus. by 696001-48031	
31		696001-48031	1	BLADE, 8-CUTTER	OPTION	
31		696001-48031	1	BLADE, 8-CUTTER	OPTION	
33		898503-08030	1	COVER SET, CUTTER	OPTION	
33		898503-08030	1	COVER SET, CUTTER	OPTION	



# No.11



# Parts List

Group:Trimmers/Brushcutters Model:SRM-2015 Section:Loop Handle( 11)

Key	Lv	Part Number	Q'ty	Description	Remarks	Note
1		890177-46730	1	LABEL, CAUTION	Sus. by 890617-43130	
1		890177-46730	1	LABEL, CAUTION	Sus. by 890617-43130	
1		890617-63630	1	LABEL, CAUTION	Sus. by 890617-43130	
1		890617-63630	1	LABEL, CAUTION	Sus. by 890617-43130	
1		X505-000140	1	LABEL, CAUTION	Sus. by 890617-43130	
1		X505-000140	1	LABEL, CAUTION	Sus. by 890617-43130	
1		890617-43130	1	LABEL, CAUTION		
1		890617-43130	1	LABEL, CAUTION		
2		351201-54130	1	HANDLE ASY, LOOP		
2		351201-54130	1	HANDLE ASY, LOOP		
3	+	900242-05035	4	SCREW 5*35		
3	+	900242-05035	4	SCREW 5*35		
4	+	900500-00005	4	NUT 5		
4	+	900500-00005	4	NUT 5		
5		610281-54130	1	COLLER		
5		610281-54130	1	COLLER		
6	+	900253-04025	2	SCREW 4*25		
6	+	900253-04025	2	SCREW 4*25		
7		178127-54530	1	TUBE 7*130		
7		178127-54530	1	TUBE 7*130		
8		178001-51030	1	WIRE, THROTTLE		
8		178001-51030	1	WIRE, THROTTLE		
9		900502-00006	2	NUT 6 (3N)		
9		900502-00006	2	NUT 6 (3N)		
10		610018-27830	1	SHAFT, DRIVE		
10		610018-27830	1	SHAFT, DRIVE		
11		890157-39130	1	LABEL, SWITCH	Sr/Nr 047934 and before/SRM-2015	
11		890157-39130	1	LABEL, SWITCH	Sr/Nr 047934 and before/SRM-2015	

# P a r t s L i s t

Group:Trimmers/Brushcutters Model:SRM-2015 Section:Loop Handle( 11)

Key	Lv	Part Number	Q'ty	Description	Remarks	Note
11		890157-39130	1	LABEL, SWITCH	Sr/Nr 35007352 and before/SRM-2015SI	
11		890157-39130	1	LABEL, SWITCH	Sr/Nr 35007352 and before/SRM-2015SI	
12		301207-08930	1	HOOK		
12		301207-08930	1	HOOK		
13		900100-05018	1	BOLT 5*18		
13		900100-05018	1	BOLT 5*18		
14		699012-03330	1	SPACER		
14		699012-03330	1	SPACER		
15		301200-29430	1	BAND ASY		
15		301200-29430	1	BAND ASY		
16	+	900242-05014	1	SCREW 5*14		
16	+	900242-05014	1	SCREW 5*14		
17		178003-52130	1	BRACKET SET, THROTTLE	Sr/Nr 047934 and before/SRM-2015	
17		178003-52130	1	BRACKET SET, THROTTLE	Sr/Nr 047934 and before/SRM-2015	
17		178003-52130	1	BRACKET SET, THROTTLE	Sr/Nr 35007352 and before/SRM-2015SI	
17		178003-52130	1	BRACKET SET, THROTTLE	Sr/Nr 35007352 and before/SRM-2015SI	
17		P021-005850	1	BRACKET SET, THROTTLE	Sr/Nr 047935 and after/SRM-2015	
17		P021-005850	1	BRACKET SET, THROTTLE	Sr/Nr 047935 and after/SRM-2015	
17		P021-005850	1	BRACKET SET, THROTTLE	Sr/Nr 35007353 and after/SRM-2015SI	
17		P021-005850	1	BRACKET SET, THROTTLE	Sr/Nr 35007353 and after/SRM-2015SI	
18	+	900242-05035	1	SCREW 5*35		
18	+	900242-05035	1	SCREW 5*35		
19	+	900242-05025	1	SCREW 5*25		
19	+	900242-05025	1	SCREW 5*25		
24	+	900500-00005	2	NUT 5		
24	+	900500-00005	2	NUT 5		
20		178012-52630	1	LOCKOUT, THROTTLE	Sr/Nr 047934 and before/SRM-2015	
20		178012-52630	1	LOCKOUT, THROTTLE	Sr/Nr 047934 and before/SRM-2015	

# Parts List

Group:Trimmers/Brushcutters Model:SRM-2015 Section:Loop Handle( 11)

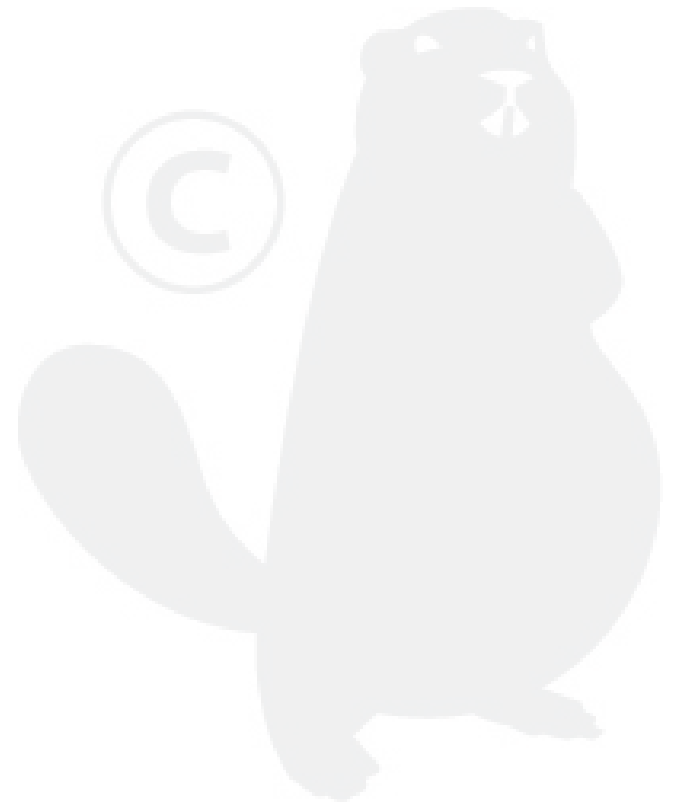
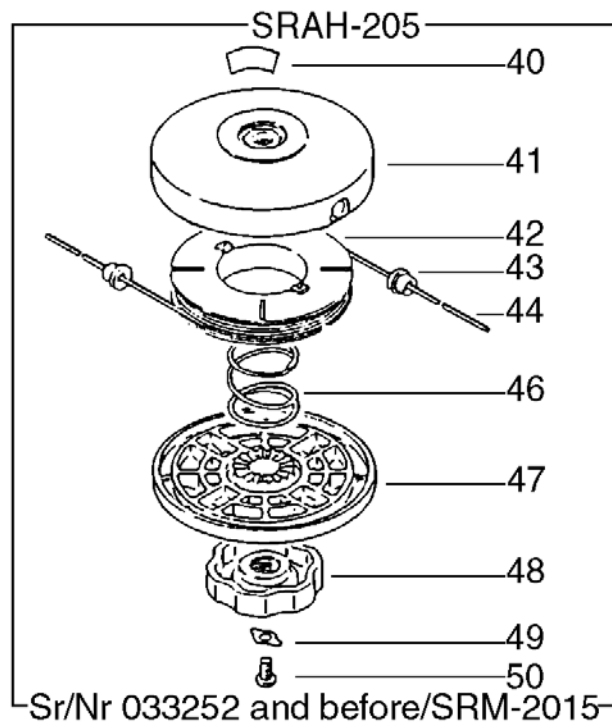
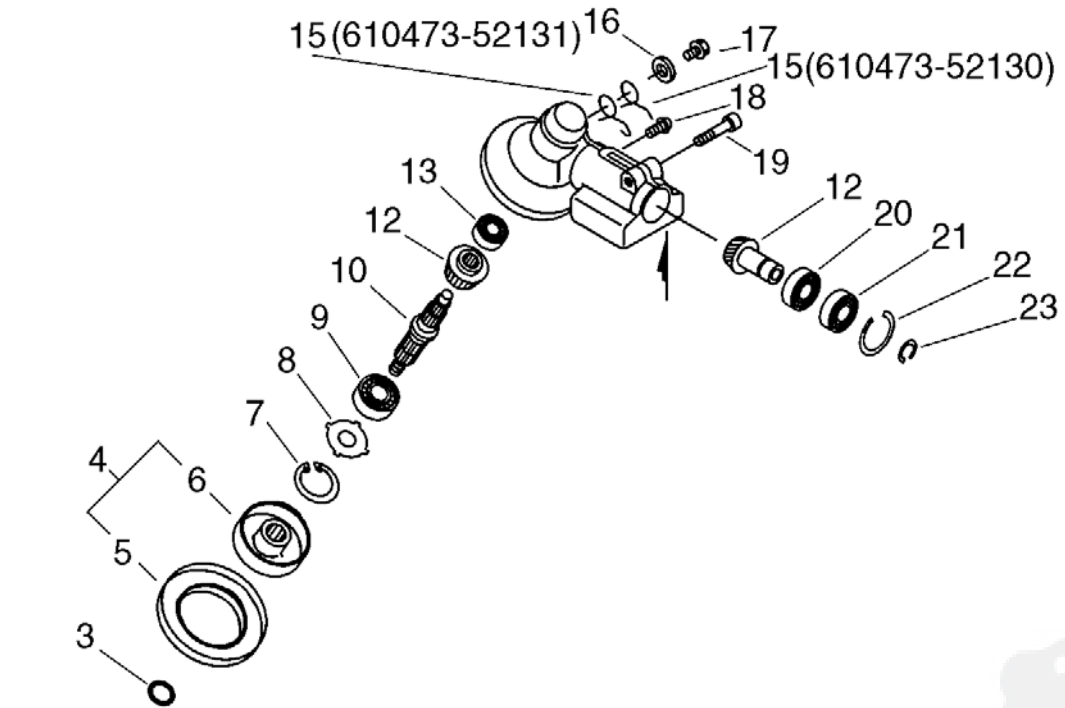
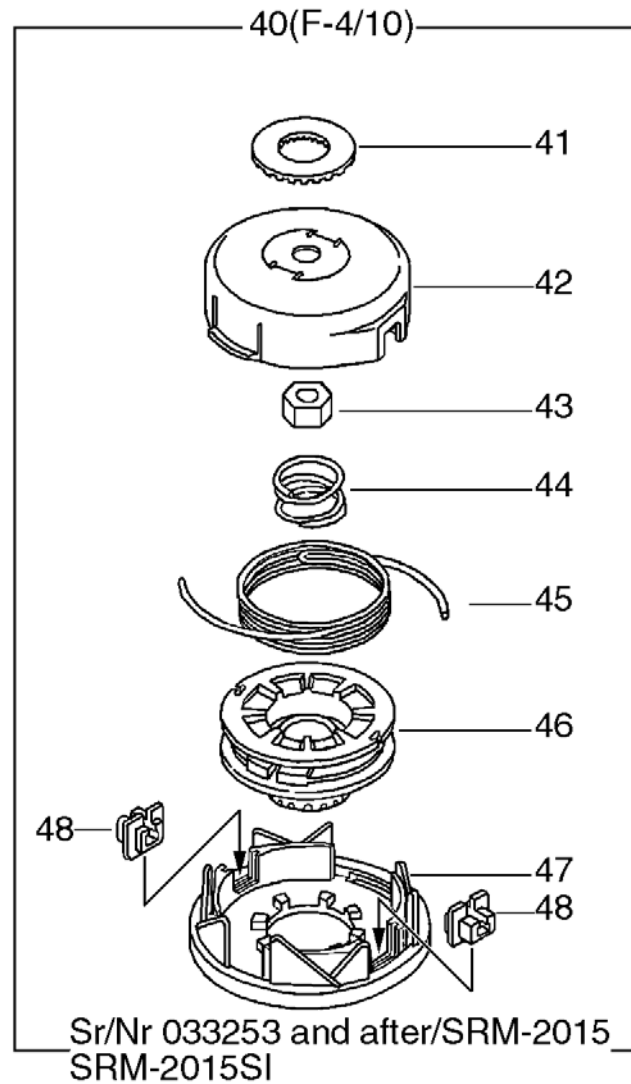
Key	Lv	Part Number	Q'ty	Description	Remarks	Note
20		178012-52630	1	LOCKOUT, THROTTLE	Sr/Nr 35007352 and before/SRM-2015SI	
20		178012-52630	1	LOCKOUT, THROTTLE	Sr/Nr 35007352 and before/SRM-2015SI	
20		C461-000000	1	LATCH, THROTTLE	Sr/Nr 047935 and after/SRM-2015	
20		C461-000000	1	LATCH, THROTTLE	Sr/Nr 047935 and after/SRM-2015	
20		C461-000000	1	LATCH, THROTTLE	Sr/Nr 35007353 and after/SRM-2015SI	
20		C461-000000	1	LATCH, THROTTLE	Sr/Nr 35007353 and after/SRM-2015SI	
21		178010-52130	1	CONTROL, THROTTLE	Sr/Nr 047934 and before/SRM-2015	
21		178010-52130	1	CONTROL, THROTTLE	Sr/Nr 047934 and before/SRM-2015	
21		178010-52130	1	CONTROL, THROTTLE	Sr/Nr 35007352 and before/SRM-2015SI	
21		178010-52130	1	CONTROL, THROTTLE	Sr/Nr 35007352 and before/SRM-2015SI	
21		C450-000110	1	TRIGGER, THROTTLE	Sr/Nr 047935 and after/SRM-2015	
21		C450-000110	1	TRIGGER, THROTTLE	Sr/Nr 047935 and after/SRM-2015	
21		C450-000110	1	TRIGGER, THROTTLE	Sr/Nr 35007353 and after/SRM-2015SI	
21		C450-000110	1	TRIGGER, THROTTLE	Sr/Nr 35007353 and after/SRM-2015SI	
22		178043-42230	1	SPRING, THR. RETURN		
22		178043-42230	1	SPRING, THR. RETURN		
23		163400-49230	1	SWITCH, IGNITION		
23		163400-49230	1	SWITCH, IGNITION		
25		178090-52630	1	LOCKOUT, T. CONTROL	Sus. by 178090-52632	
25		178090-52630	1	LOCKOUT, T. CONTROL	Sus. by 178090-52632	
25		178090-52631	1	LOCKOUT, T. CONTROL	Sus. by 178090-52632	
25		178090-52631	1	LOCKOUT, T. CONTROL	Sus. by 178090-52632	
25		178090-52632	1	LOCKOUT, T. CONTROL		
25		178090-52632	1	LOCKOUT, T. CONTROL		
26		178013-52630	1	SPRING, THR. LOCK		
26		178013-52630	1	SPRING, THR. LOCK		
27		351213-52130	1	GRIP, FRONT HANDLE	Sus. by C403-000140	
27		351213-52130	1	GRIP, FRONT HANDLE	Sus. by C403-000140	

# P a r t s L i s t

Group:Trimmers/Brushcutters Model:SRM-2015 Section:Loop Handle( 11)

Key	Lv	Part Number	Q'ty	Description	Remarks	Note
27		C403-000140	1	GRIP, HANDLE		
27		C403-000140	1	GRIP, HANDLE		
28		610272-52130	1	BAND		
28		610272-52130	1	BAND		
24	+	900500-00005	1	NUT 5		
24	+	900500-00005	1	NUT 5		
29	+	900242-05028	1	SCREW 5*28		
29	+	900242-05028	1	SCREW 5*28		
30		610206-28230	1	HOUSING AS'Y D,SFT.		
30		610206-28230	1	HOUSING AS'Y D,SFT.		
31		301000-55230	1	HARNESS ASY	Sus. by 301000-55231	
31		301000-55230	1	HARNESS ASY	Sus. by 301000-55231	
31		301000-55231	1	HARNESS ASY		
31		301000-55231	1	HARNESS ASY		
32	+	301305-24330	1	LINK		
32	+	301305-24330	1	LINK		
33		V452-000120	1	SPRING,TORSION	Sr/Nr 047935 and after/SRM-2015	
33		V452-000120	1	SPRING,TORSION	Sr/Nr 047935 and after/SRM-2015	
33		V452-000120	1	SPRING,TORSION	Sr/Nr 35007353 and after/SRM-2015SI	
33		V452-000120	1	SPRING,TORSION	Sr/Nr 35007353 and after/SRM-2015SI	
34		C461-000010	1	LATCH,THROTTLE	Sr/Nr 047935 and after/SRM-2015	
34		C461-000010	1	LATCH,THROTTLE	Sr/Nr 047935 and after/SRM-2015	
34		C461-000010	1	LATCH,THROTTLE	Sr/Nr 35007353 and after/SRM-2015SI	
34		C461-000010	1	LATCH,THROTTLE	Sr/Nr 35007353 and after/SRM-2015SI	

# No.12





# Parts List

Group:Trimmers/Brushcutters Model:SRM-2015 Section:Gear Case(Loop Handle Type), Nylon Line Cutting Head( 12)

Key	Lv	Part Number	Q'ty	Description	Remarks	Note
3		900720-00012	1	O-RING 12		
3		900720-00012	1	O-RING 12		
4		610313-52930	1	PLATE, ADAPTER (U)	Sus. by C535-000001	
4		610313-52930	1	PLATE, ADAPTER (U)	Sus. by C535-000001	
4		C535-000000	1	FIXTURE, BRADE	Sus. by C535-000001	
4		C535-000000	1	FIXTURE, BRADE	Sus. by C535-000001	
4		C535-000001	1	FIXTURE, BRADE		
4		C535-000001	1	FIXTURE, BRADE		
5	+	610352-56830	1	PLATE, CUP		
5	+	610352-56830	1	PLATE, CUP		
6	+	C535-000010	1	FIXTURE, BRADE	Sus. by C535-000011	
6	+	C535-000010	1	FIXTURE, BRADE	Sus. by C535-000011	
6	+	C535-000011	1	FIXTURE, BRADE		
6	+	C535-000011	1	FIXTURE, BRADE		
7		900702-00032	1	CIRCLIP 32		
7		900702-00032	1	CIRCLIP 32		
8		610444-56830	1	WASHER		
8		610444-56830	1	WASHER		
9		900812-06201	1	BEARING, BALL 6201		
9		900812-06201	1	BEARING, BALL 6201		
10		610310-56830	1	SHAFT, P.T.O.		
10		610310-56830	1	SHAFT, P.T.O.		
12		610300-40830	1	GEAR SET		
12		610300-40830	1	GEAR SET		
13		900810-00626	1	BEARING, BALL 626		
13		900810-00626	1	BEARING, BALL 626		
15		610473-52130	1	SPRING, TORSION	Can be used on the 610313-52930 only/SRM-2015	
15		610473-52130	1	SPRING, TORSION	Can be used on the 610313-52930 only/SRM-2015	

# Parts List

Group:Trimmers/Brushcutters Model:SRM-2015 Section:Gear Case(Loop Handle Type), Nylon Line Cutting Head( 12)

Key	Lv	Part Number	Q'ty	Description	Remarks	Note
15		610473-52131	1	SPRING, TORSION	Can be used on the C535-000000,000001 /SRM-2015	
15		610473-52131	1	SPRING, TORSION	Can be used on the C535-000000,000001 /SRM-2015	
15		610473-52131	1	SPRING, TORSION	SRM-2015SI	
15		610473-52131	1	SPRING, TORSION	SRM-2015SI	
16		900603-50008	1	WASHER		
16		900603-50008	1	WASHER		
17		610434-50030	1	BOLT 8* 6	Sus. by 610434-50031	
17		610434-50030	1	BOLT 8* 6	Sus. by 610434-50031	
17		610434-50031	1	BOLT 8* 8		
17		610434-50031	1	BOLT 8* 8		
18		900242-05010	1	SCREW 5*10		
18		900242-05010	1	SCREW 5*10		
19		900162-06025	1	BOLT, H.S. 6*25		
19		900162-06025	1	BOLT, H.S. 6*25		
20		900855-06900	1	BEARING, BALL 6900		
20		900855-06900	1	BEARING, BALL 6900		
21		900858-06900	1	BEARING, BALL 6900Z		
21		900858-06900	1	BEARING, BALL 6900Z		
22		900702-00022	1	CIRCLIP 22		
22		900702-00022	1	CIRCLIP 22		
23		900706-00010	1	CIRCLIP 10		
23		900706-00010	1	CIRCLIP 10		
40		890617-46730	1	LABEL, CAUTION	Sr/Nr 033252 and before/SRM-2015	
40		890617-46730	1	LABEL, CAUTION	Sr/Nr 033252 and before/SRM-2015	
41		696210-56930	1	DRUM, REEL	Sr/Nr 033252 and before/SRM-2015	
41		696210-56930	1	DRUM, REEL	Sr/Nr 033252 and before/SRM-2015	
42		696214-06830	1	REEL, CORD	Sr/Nr 033252 and before/SRM-2015	
42		696214-06830	1	REEL, CORD	Sr/Nr 033252 and before/SRM-2015	

# P a r t s L i s t

Group:Trimmers/Brushcutters Model:SRM-2015 Section:Gear Case(Loop Handle Type), Nylon Line Cutting Head( 12)

Key	Lv	Part Number	Q'ty	Description	Remarks	Note
43		696212-06032	2	EYELET	Sr/Nr 033252 and before/SRM-2015	
43		696212-06032	2	EYELET	Sr/Nr 033252 and before/SRM-2015	
44		696215-22830	2	CORD, NYLON(2.4*2.5)	Sr/Nr 033252 and before/SRM-2015	
44		696215-22830	2	CORD, NYLON(2.4*2.5)	Sr/Nr 033252 and before/SRM-2015	
46		696216-06030	1	SPRING	Sr/Nr 033252 and before/SRM-2015	
46		696216-06030	1	SPRING	Sr/Nr 033252 and before/SRM-2015	
47		696206-28232	1	COVER, DRUM (BL)	Sr/Nr 033252 and before/SRM-2015	
47		696206-28232	1	COVER, DRUM (BL)	Sr/Nr 033252 and before/SRM-2015	
48		696219-28231	1	NUT (BL)	Sr/Nr 033252 and before/SRM-2015	
48		696219-28231	1	NUT (BL)	Sr/Nr 033252 and before/SRM-2015	
49		696220-06030	1	STOPPER, NUT	Sr/Nr 033252 and before/SRM-2015	
49		696220-06030	1	STOPPER, NUT	Sr/Nr 033252 and before/SRM-2015	
50		900220-06010	1	SCREW 6*10	Sr/Nr 033252 and before/SRM-2015	
50		900220-06010	1	SCREW 6*10	Sr/Nr 033252 and before/SRM-2015	
40		X047-000050	1	CUTTER,ASM LINE	Sus. by X047-000260	
40		X047-000050	1	CUTTER,ASM LINE	Sus. by X047-000260	
40		X047-000150	1	CUTTER,ASM LINE	Sus. by X047-000260	
40		X047-000150	1	CUTTER,ASM LINE	Sus. by X047-000260	
40		X047-000151	1	CUTTER,ASM LINE	Sus. by X047-000260	
40		X047-000151	1	CUTTER,ASM LINE	Sus. by X047-000260	
40		X047-000260	1	CUTTER,ASM LINE	Sr/Nr 033253 and after	
40		X047-000260	1	CUTTER,ASM LINE	Sr/Nr 033253 and after	
41	+	V332-000000	1	WASHER,CIRCULAR 24	Sr/Nr 033253 and after/SRM-2015	
41	+	V332-000000	1	WASHER,CIRCULAR 24	Sr/Nr 033253 and after/SRM-2015	
41	+	V332-000000	1	WASHER,CIRCULAR 24	SRM-2015SI	
41	+	V332-000000	1	WASHER,CIRCULAR 24	SRM-2015SI	
42	+	X470-000020	1	DRUM,REEL	Sus. by P022-003310	
42	+	X470-000020	1	DRUM,REEL	Sus. by P022-003310	

# Parts List

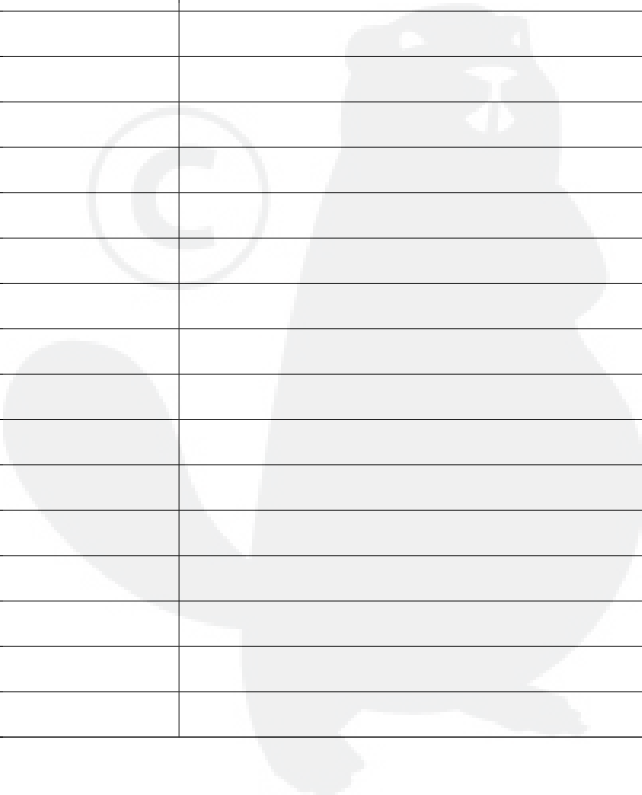
Group:Trimmers/Brushcutters Model:SRM-2015 Section:Gear Case(Loop Handle Type), Nylon Line Cutting Head( 12)

Key	Lv	Part Number	Q'ty	Description	Remarks	Note
42	+	P022-002890	1	HOUSING	Sus. by P022-003310	
42	+	P022-002890	1	HOUSING	Sus. by P022-003310	
42	+	P022-003310	1	HOUSING	Sr/Nr 033253 and after/SRM-2015	
42	+	P022-003310	1	HOUSING	Sr/Nr 033253 and after/SRM-2015	
42	+	P022-003310	1	HOUSING	SRM-2015SI	
42	+	P022-003310	1	HOUSING	SRM-2015SI	
43	+	P022-001220	1	NUT	Sr/Nr 033253 and after/SRM-2015	
43	+	P022-001220	1	NUT	Sr/Nr 033253 and after/SRM-2015	
43	+	P022-001220	1	NUT	SRM-2015SI	
43	+	P022-001220	1	NUT	SRM-2015SI	
44	+	P022-001250	1	SPRING	Sr/Nr 033253 and after/SRM-2015	
44	+	P022-001250	1	SPRING	Sr/Nr 033253 and after/SRM-2015	
44	+	P022-001250	1	SPRING	SRM-2015SI	
44	+	P022-001250	1	SPRING	SRM-2015SI	
45	+	P022-001230	1	NYLON CODE	Sus. by P022-006190	
45	+	P022-001230	1	NYLON CODE	Sus. by P022-006190	
45	+	P022-006190	1	NYLON CODE	Sr/Nr 033253 and after	
45	+	P022-006190	1	NYLON CODE	Sr/Nr 033253 and after	
46	+	P022-001260	1	BOBBIN	Sr/Nr 033253 and after/SRM-2015	
46	+	P022-001260	1	BOBBIN	Sr/Nr 033253 and after/SRM-2015	
46	+	P022-001260	1	BOBBIN	SRM-2015SI	
46	+	P022-001260	1	BOBBIN	SRM-2015SI	
47	+	P022-001240	1	COVER	Sus. by P022-003330	
47	+	P022-001240	1	COVER	Sus. by P022-003330	
47	+	P022-002860	1	COVER	Sus. by P022-003330	
47	+	P022-002860	1	COVER	Sus. by P022-003330	
47	+	P022-003330	1	COVER	Sr/Nr 033253 and after/SRM-2015	
47	+	P022-003330	1	COVER	Sr/Nr 033253 and after/SRM-2015	

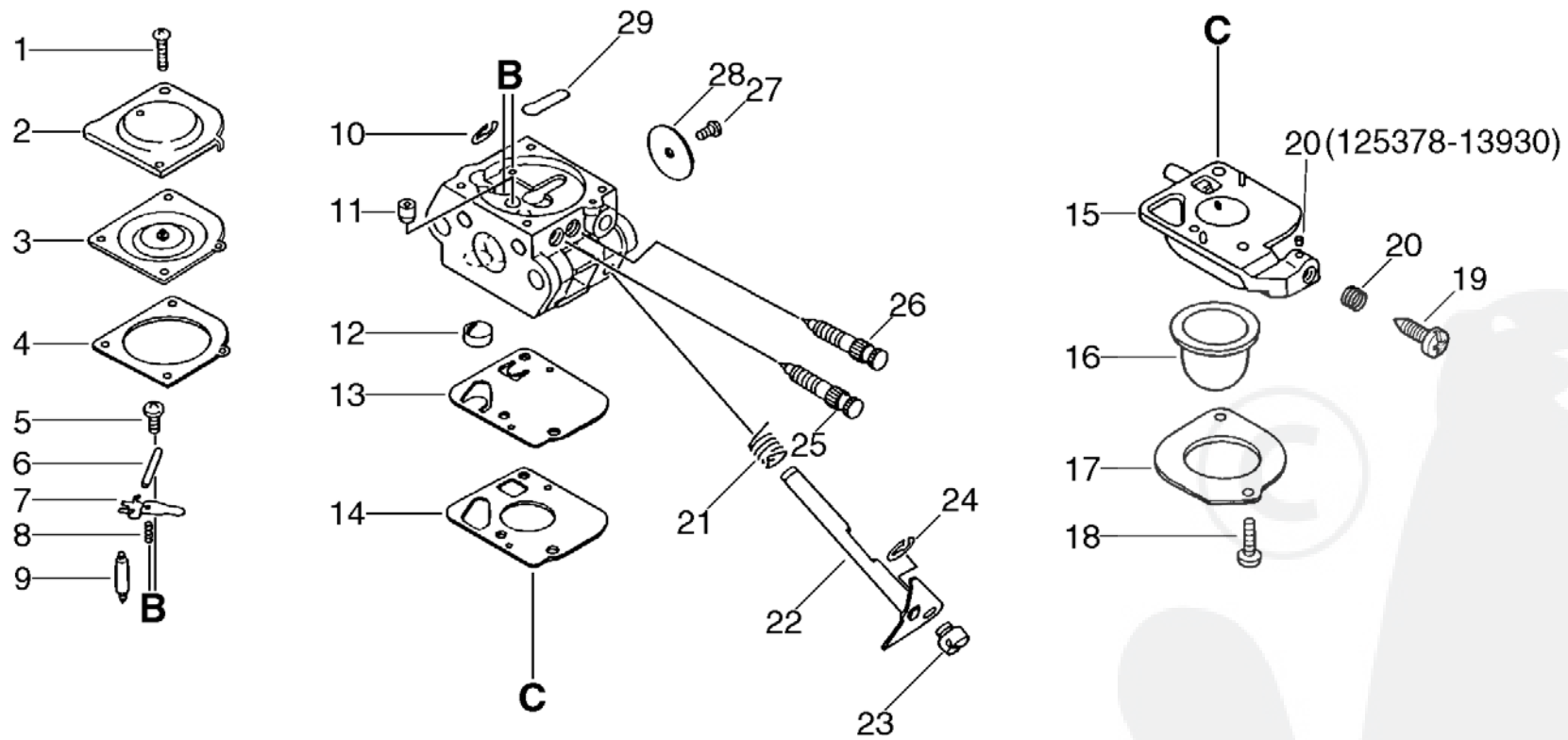
Parts List

Group:Trimmers/Brushcutters Model:SRM-2015 Section:Gear Case(Loop Handle Type), Nylon Line Cutting Head( 12)

Key	Lv	Part Number	Q'ty	Description	Remarks	Note
47	+	P022-003330	1	COVER	SRM-2015SI	
47	+	P022-003330	1	COVER	SRM-2015SI	
48	+	P022-000710	2	EYELET	Sr/Nr 033253 and after/SRM-2015	
48	+	P022-000710	2	EYELET	Sr/Nr 033253 and after/SRM-2015	
48	+	P022-000710	2	EYELET	SRM-2015SI	
48	+	P022-000710	2	EYELET	SRM-2015SI	



# No.13



# Parts List

Group:Trimmers/Brushcutters Model:SRM-2015 Section:Carburetor( 13)

Key	Lv	Part Number	Q'ty	Description	Remarks	Note
		125200-52430	1	CARBURETOR ASY	Sus. by 125200-52433	
		125200-52430	1	CARBURETOR ASY	Sus. by 125200-52433	
		125200-52431	1	CARBURETOR ASY	Sus. by 125200-52433	
		125200-52431	1	CARBURETOR ASY	Sus. by 125200-52433	
		125200-52432	1	CARBURETOR C1U-K53A	Sus. by 125200-52433	
		125200-52432	1	CARBURETOR C1U-K53A	Sus. by 125200-52433	
		125200-52433	1	CARBURETOR C1U-K53B		
		125200-52433	1	CARBURETOR C1U-K53B		
1	+	125344-52130	2	SCREW		
1	+	125344-52130	2	SCREW		
2	+	125342-13210	1	COVER, DIAPHRAGM	Sus. by 125342-52130	
2	+	125342-13210	1	COVER, DIAPHRAGM	Sus. by 125342-52130	
2	+	125342-52130	1	COVER, DIAPHRAGM		
2	+	125342-52130	1	COVER, DIAPHRAGM		
3	+	125341-49030	1	DIAPHRAGM		
3	+	125341-49030	1	DIAPHRAGM		
4	+	125340-51030	1	GASKET, DIAPHRAGM		
4	+	125340-51030	1	GASKET, DIAPHRAGM		
5	+	125339-42030	1	SCREW		
5	+	125339-42030	1	SCREW		
6	+	125338-13930	1	PIN, METERING ARM		
6	+	125338-13930	1	PIN, METERING ARM		
7	+	125323-42030	1	LEVER, METERING		
7	+	125323-42030	1	LEVER, METERING		
8	+	125322-42030	1	SPRING, COIL	Sus. by 125322-11520	
8	+	125322-42030	1	SPRING, COIL	Sus. by 125322-11520	
8	+	125322-11520	1	SPRING, COIL		
8	+	125322-11520	1	SPRING, COIL		

# P a r t s L i s t

Group:Trimmers/Brushcutters Model:SRM-2015 Section:Carburetor( 13)

Key	Lv	Part Number	Q'ty	Description	Remarks	Note
9	+	125337-06960	1	VALVE, INLET NEEDLE		
9	+	125337-06960	1	VALVE, INLET NEEDLE		
10	+	125327-15130	1	CLIP		
10	+	125327-15130	1	CLIP		
11	+	125376-49030	1	NOZZLE, CHECK VALVE	Sus. by P005-001050	
11	+	125376-49030	1	NOZZLE, CHECK VALVE	Sus. by P005-001050	
11	+	P005-001050	1	NOZZLE, CHECK VALVE		
11	+	P005-001050	1	NOZZLE, CHECK VALVE		
12	+	125326-42030	1	STRAINER		
12	+	125326-42030	1	STRAINER		
13	+	125312-12820	1	DIAPHRAGM, FUEL PUMP		
13	+	125312-12820	1	DIAPHRAGM, FUEL PUMP		
14	+	125325-13310	1	GASKET, PUMP		
14	+	125325-13310	1	GASKET, PUMP		
15	+	125324-11610	1	COVER, PUMP	Sus. by P005-000590	
15	+	125324-11610	1	COVER, PUMP	Sus. by P005-000590	
15	+	125383-13310	1	BASE, PRIMER	Sus. by P005-000590	
15	+	125383-13310	1	BASE, PRIMER	Sus. by P005-000590	
15	+	P005-000590	1	BASE,ASY PRIMER		
15	+	P005-000590	1	BASE,ASY PRIMER		
16	+	125381-08660	1	PUMP, PRIMING		
16	+	125381-08660	1	PUMP, PRIMING		
17	+	125363-11610	1	RING		
17	+	125363-11610	1	RING		
18	+	125310-11610	2	SCREW		
18	+	125310-11610	2	SCREW		
19	+	125334-13930	1	SCREW, IDLE ADJUST	Sr/Nr 012002 and before/SRM-2015	
19	+	125334-13930	1	SCREW, IDLE ADJUST	Sr/Nr 012002 and before/SRM-2015	



# P a r t s L i s t

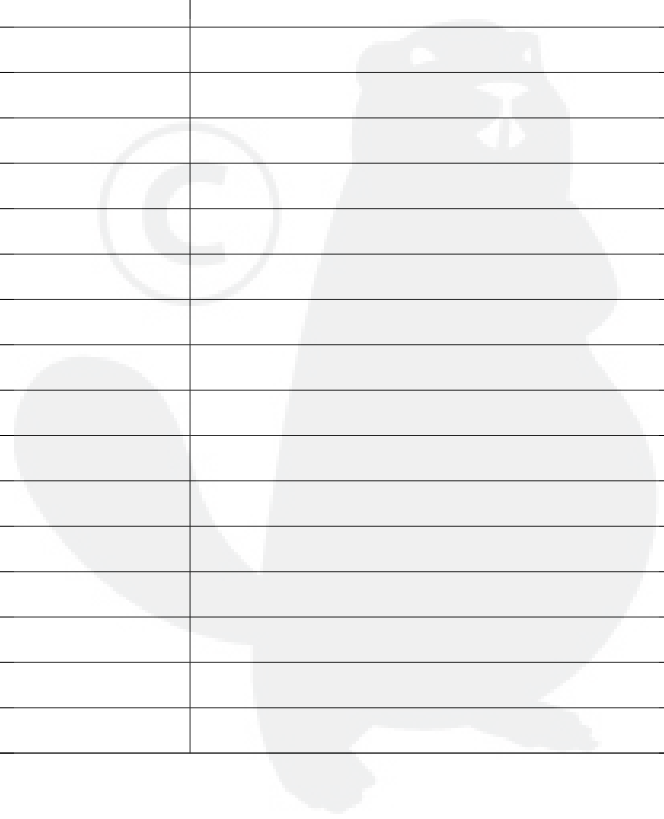
Group:Trimmers/Brushcutters Model:SRM-2015 Section:Carburetor( 13)

Key	Lv	Part Number	Q'ty	Description	Remarks	Note
19	+	125334-06960	1	SCREW, IDLE ADJUST	Sr/Nr 012003 and after /SRM-2015	
19	+	125334-06960	1	SCREW, IDLE ADJUST	Sr/Nr 012003 and after /SRM-2015	
19	+	125334-06960	1	SCREW, IDLE ADJUST	SRM-2015SI	
19	+	125334-06960	1	SCREW, IDLE ADJUST	SRM-2015SI	
20	+	125378-13930	1	PIECE, FRICTION	Sr/Nr 012002 and before/SRM-2015	
20	+	125378-13930	1	PIECE, FRICTION	Sr/Nr 012002 and before/SRM-2015	
20	+	125333-06960	1	SPRIG,ADJUST SCREW	Sr/Nr 012003 and after /SRM-2015	
20	+	125333-06960	1	SPRIG,ADJUST SCREW	Sr/Nr 012003 and after /SRM-2015	
20	+	125333-06960	1	SPRIG,ADJUST SCREW	SRM-2015SI	
20	+	125333-06960	1	SPRIG,ADJUST SCREW	SRM-2015SI	
21	+	125313-42030	1	SPRING, THRT. RETURN		
21	+	125313-42030	1	SPRING, THRT. RETURN		
22	+	125317-49030	1	SHAFT, THROTTLE	Sus. by P005-000390	
22	+	125317-49030	1	SHAFT, THROTTLE	Sus. by P005-000390	
22	+	P005-000390	1	SHAFT, THROTTLE		
22	+	P005-000390	1	SHAFT, THROTTLE		
23	+	125372-42030	1	SWIVEL		
23	+	125372-42030	1	SWIVEL		
24	+	125327-13930	1	CLIP		
24	+	125327-13930	1	CLIP		
25	+	125320-52430	1	NEEDLE, HIGH SPEED	Can be used on 125200-52431,52432	
25	+	125320-52430	1	NEEDLE, HIGH SPEED	Can be used on 125200-52431,52432	
25	+	P005-001710	1	NEEDLE, HIGH SPEED	Can be used on 125200-52433	
25	+	P005-001710	1	NEEDLE, HIGH SPEED	Can be used on 125200-52433	
26	+	125318-52430	1	NEEDLE, IDLE		
26	+	125318-52430	1	NEEDLE, IDLE		
27	+	125314-13930	1	SCREW		
27	+	125314-13930	1	SCREW		

# P a r t s L i s t

Group:Trimmers/Brushcutters Model:SRM-2015 Section:Carburetor( 13)

Key	Lv	Part Number	Q'ty	Description	Remarks	Note
28	+	125316-49030	1	VALVE, THROTTLE		
28	+	125316-49030	1	VALVE, THROTTLE		
29	+	125345-15130	1	PLUG, WELCH		
29	+	125345-15130	1	PLUG, WELCH		



# P a r t s L i s t

Group:Trimmers/Brushcutters Model:SRM-2015 Section:Repair Kit( 14)

Key	Lv	Part Number	Q'ty	Description	Remarks	Note
		125303-13310	1	DIAPHRAGM/GASKET KIT		
		125303-13310	1	DIAPHRAGM/GASKET KIT		
10- 3	+	125341-49030	1	DIAPHRAGM		
10- 3	+	125341-49030	1	DIAPHRAGM		
10- 4	+	125340-51030	1	GASKET, DIAPHRAGM		
10- 4	+	125340-51030	1	GASKET, DIAPHRAGM		
10-13	+	125312-12820	1	DIAPHRAGM, FUEL PUMP		
10-13	+	125312-12820	1	DIAPHRAGM, FUEL PUMP		
10-14	+	125325-13310	1	GASKET, PUMP		
10-14	+	125325-13310	1	GASKET, PUMP		
		125300-13310	1	REBUILD KIT	Sus. by P005-001810	
		125300-13310	1	REBUILD KIT	Sus. by P005-001810	
		P005-001810	1	REBUILD KIT		
		P005-001810	1	REBUILD KIT		
10- 3	+	125341-49030	1	DIAPHRAGM		
10- 3	+	125341-49030	1	DIAPHRAGM		
10- 4	+	125340-51030	1	GASKET, DIAPHRAGM		
10- 4	+	125340-51030	1	GASKET, DIAPHRAGM		
10- 6	+	125338-13930	1	PIN, METERING ARM		
10- 6	+	125338-13930	1	PIN, METERING ARM		
10- 7	+	125323-42030	1	LEVER, METERING		
10- 7	+	125323-42030	1	LEVER, METERING		
10- 8	+	125322-42030	1	SPRING, COIL	Sus. by 125322-11520	
10- 8	+	125322-42030	1	SPRING, COIL	Sus. by 125322-11520	
10- 8	+	125322-11520	1	SPRING, COIL		
10- 8	+	125322-11520	1	SPRING, COIL		
10- 9	+	125337-06960	1	VALVE, INLET NEEDLE		
10- 9	+	125337-06960	1	VALVE, INLET NEEDLE		



