

Parts List

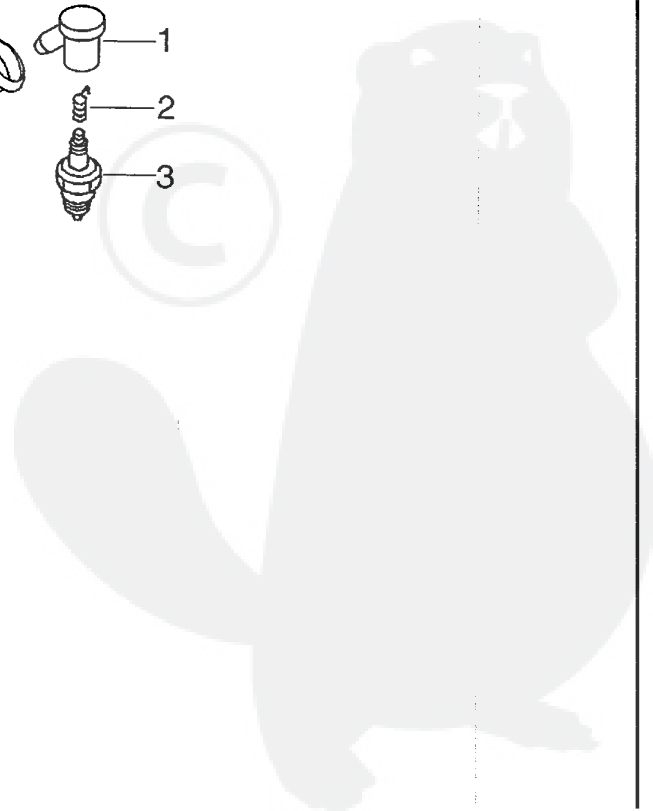
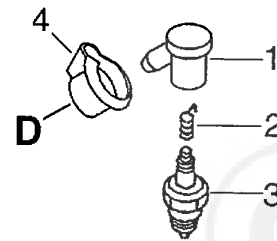
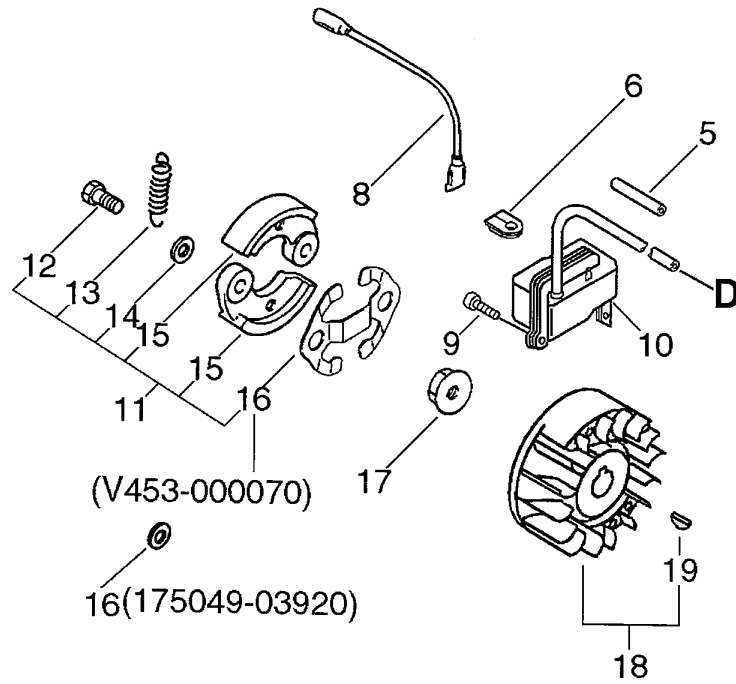
Group:Trimmers/Brushcutters Model:SRM-4000(6digits)(35)(36) Section:Cylinder, Crankcase, Piston, Fan Cover(1)

Key	Lv	Part Number	Q'ty	Description	Remarks	Note
2		A130-000200	1	CYLINDER	Sus. by A130-000203	
2		A130-000201	1	CYLINDER	Sus. by A130-000203	
2		A130-000202	1	CYLINDER	Sus. by A130-000203	
2		A130-000203	1	CYLINDER	Sr/Nr 36007730 and before	
2		A130-000720	1	CYLINDER	Sus. by A130-000721	
2		A130-000721	1	CYLINDER	Sus. by A130-000880	
3		900162-05020	4	BOLT, H.S. 5*20		
4		V100-000040	1	GASKET,CYL		
5		A014-000000	1	DECOMP,ASM	Sus. by A014-000030	
6 +		101113-37530	1	SPRING		
7 +		P022-002110	1	CLIP		
8		159025-37530	1	GASKET		
9		P021-002460	1	PISTON KIT	Sus. by P021-002461	
9		P021-002461	1	PISTON KIT	Sr/Nr 36007730 and before	
9		P021-009470	1	PISTON KIT	Sus. by P021-011210	
9		P021-011210	1	PISTON KIT	Sus. by P021-014260	
10 +		100011-10530	2	RING, PISTON	Can be used on P021-002460,-1 only	
10 +		100011-10530	1	RING, PISTON	Can be used on P021-009470 only	
11 +		V608-000000	1	PIN,ENG 10		
12 +		100015-00120	2	CIRCLIP, PISTON PIN	Can be used on P021-002460,-1 only	
12 +		V580-000010	2	CIRCLIP, PISTON PIN	Can be used on P021-009470 only	
13 +		100012-12331	1	BEARING, NEEDLE		
14 +		V307-000060	2	WASHER, CIRCULAR 10		
15		A011-000120	1	CRANKSHAFT,ASM		
16		P021-002470	1	CRANKCASE SET	Sus. by P021-002471	
16		P021-002471	1	CRANKCASE SET		
17 +		100213-05530	1	OILSEAL		
18 +		94035-36201	1	BEARING BALL		

Parts List

Group:Trimmers/Brushcutters Model:SRM-4000(6digits)(35)(36) Section:Cylinder, Crankcase, Piston, Fan Cover(1)

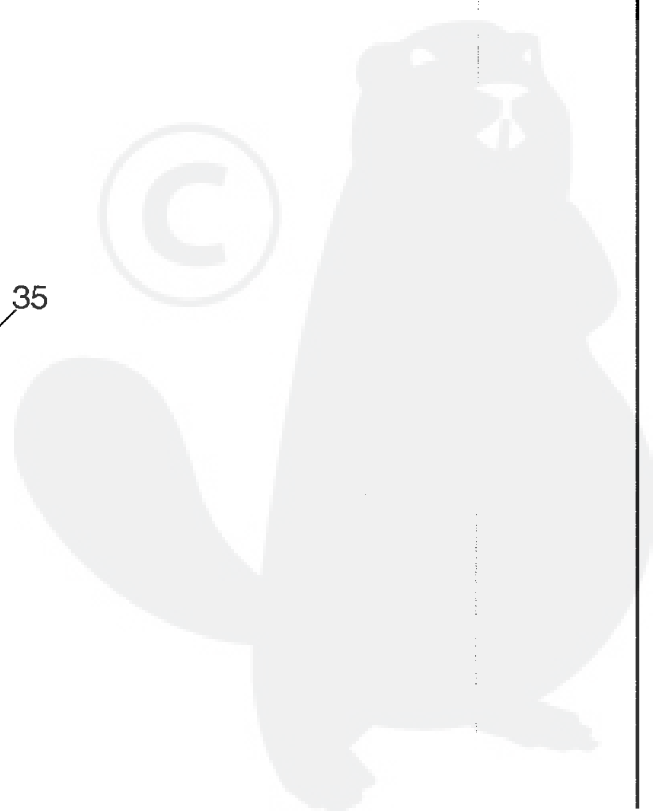
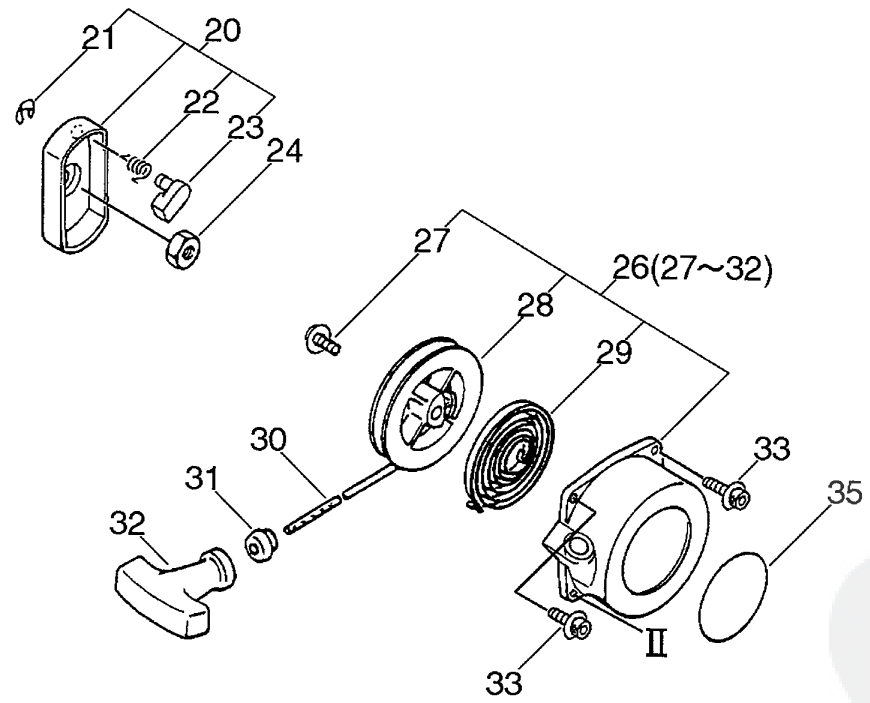
Key	Lv	Part Number	Q'ty	Description	Remarks	Note
19	+	900810-36202	1	BEARING, BALL 6202		
20	+	V102-000000	1	GASKET,CRANKCASE	Sus. by V102-000001	
20	+	V102-000001	1	GASKET,CRANKCASE		
21	+	100215-03930	4	PIN, DOWEL		
22	+	100213-00310	1	OILSEAL		
23	+	900162-05035	4	BOLT, H.S. 5*35		
24		A556-000160	1	DRUM,CLUTCH	Sus. by A556-000181	
24		A556-000161	1	DRUM,CLUTCH	Sus. by A556-000181	
24		A556-000180	1	DRUM,CLUTCH	Sus. by A556-000181	
24		A556-000181	1	DRUM,CLUTCH		
25		900702-00028	1	CIRCLIP 28		
26		900807-06001	2	BEARING, BALL 6001		
27		900701-00012	1	CIRCLIP 12		
30		V420-000420	1	CUSHION	Sus. by V420-000980	
30		V420-000980	1	CUSHION		
31		900702-00045	1	RING, RETAINING(IN)		
32		900162-05028	1	BOLT, H.S. 5*28	Sus. by 91118-05028	
33		900162-05012	1	BOLT, H.S. 5*12	Sus. by 91118-05012	
34		900162-05020	4	BOLT, H.S. 5*20	Sus. by 91118-05020	
35		A172-000150	1	COVER,FAN		
36		900106-05020	1	BOLT, H.S. 5*20	Sus. by 91121-05020	
37		V353-000020	1	COLLAR,5		
38		A162-000020	1	GUARD, TOP		
39		A160-000240	1	COVER,CYLINDER	Sus. by A160-000241	
39		A160-000241	1	COVER,CYLINDER		
40		X503-001970	1	LABEL,MODEL	Sus. by X547-001030	
41		900106-05012	1	BOLT, H.S. 5*12	Sus. by 91121-05012	



Parts List

Group:Trimmers/Brushcutters Model:SRM-4000 (6digits) (35) (36) Section:Magneto, Clutch(2)

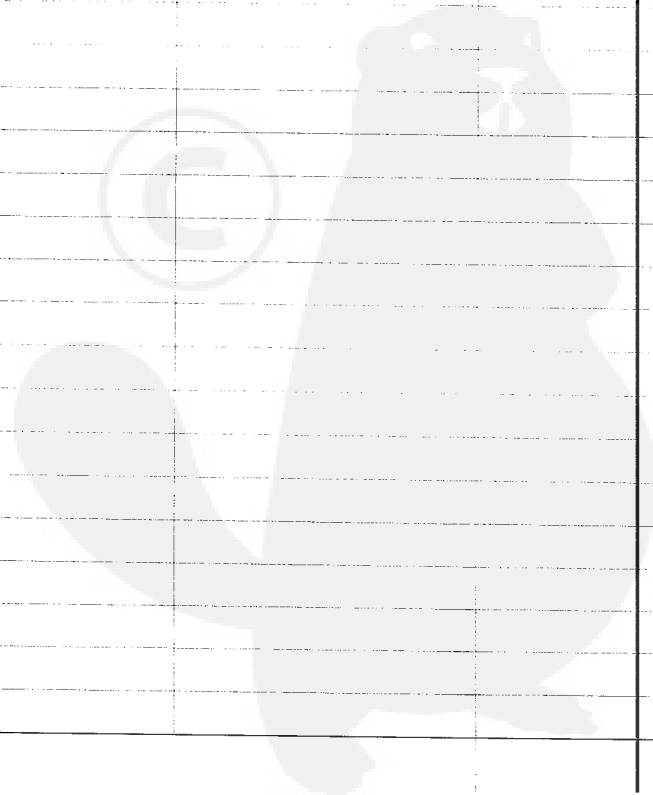
Key	Lv	Part Number	Q'ty	Description	Remarks	Note
1		A427-000000	1	CAP, SPARK PLUG		
2		A426-000000	1	TERMINAL, SPARKPLUG		
3		159017-31730	1	PLUG, SPARK RCJ-6Y		
4		V141-000020	1	GROMMET, PLUG		
5		V475-001610	1	TUBE		
6		156114-04920	1	GROMMET		
8		162010-55630	1	LEAD, GROUND		
9		900162-05020	2	BOLT, H.S. 5*20		
10		A411-000050	1	COIL, IGNITION		
11		P021-002480	1	CLUTCH ASY	Sus. by P021-008190	
11		P021-002481	1	CLUTCH ASY	Sus. by P021-008190	
11		P021-008190	1	CLUTCH ASY		
12	+	A557-000000	2	SHAFT, CLUTCH		
13	+	V451-000230	1	SPRING, TENSION	Sus. by V451-000480	
13	+	V451-000480	1	SPRING, TENSION		
14	+	V346-000000	2	WASHER, WAVE	Sr/Nr 36001720 and before	
14	+	175048-03920	2	WASHER	Sr/Nr 36001721 and after	
15	+	A553-000030	2	ARM, CLUTCH	Sr/Nr 36001720 and before	
15	+	A553-000040	2	ARM, CLUTCH	Sr/Nr 36001721 and after	
16	+	175049-03920	2	WASHER	Sr/Nr 36001720 and before	
16	+	V453-000070	1	SPRING, FLAT	Sr/Nr 36001721 and after	
17		900519-00010	1	NUT, FLANGE 10		
18		A409-000060	1	ROTOR, MAGNETO	Sus. by P021-005911	
18		A409-000061	1	ROTOR, MAGNETO	Sus. by P021-005911	
18		P021-005910	1	ROTOR, MAGNETO KIT	Sus. by P021-005911	
18		P021-005911	1	ROTOR, MAGNETO KIT		
19	+	900323-03014	1	KEY WOODRUFF	Can be used P021-005910,005911	

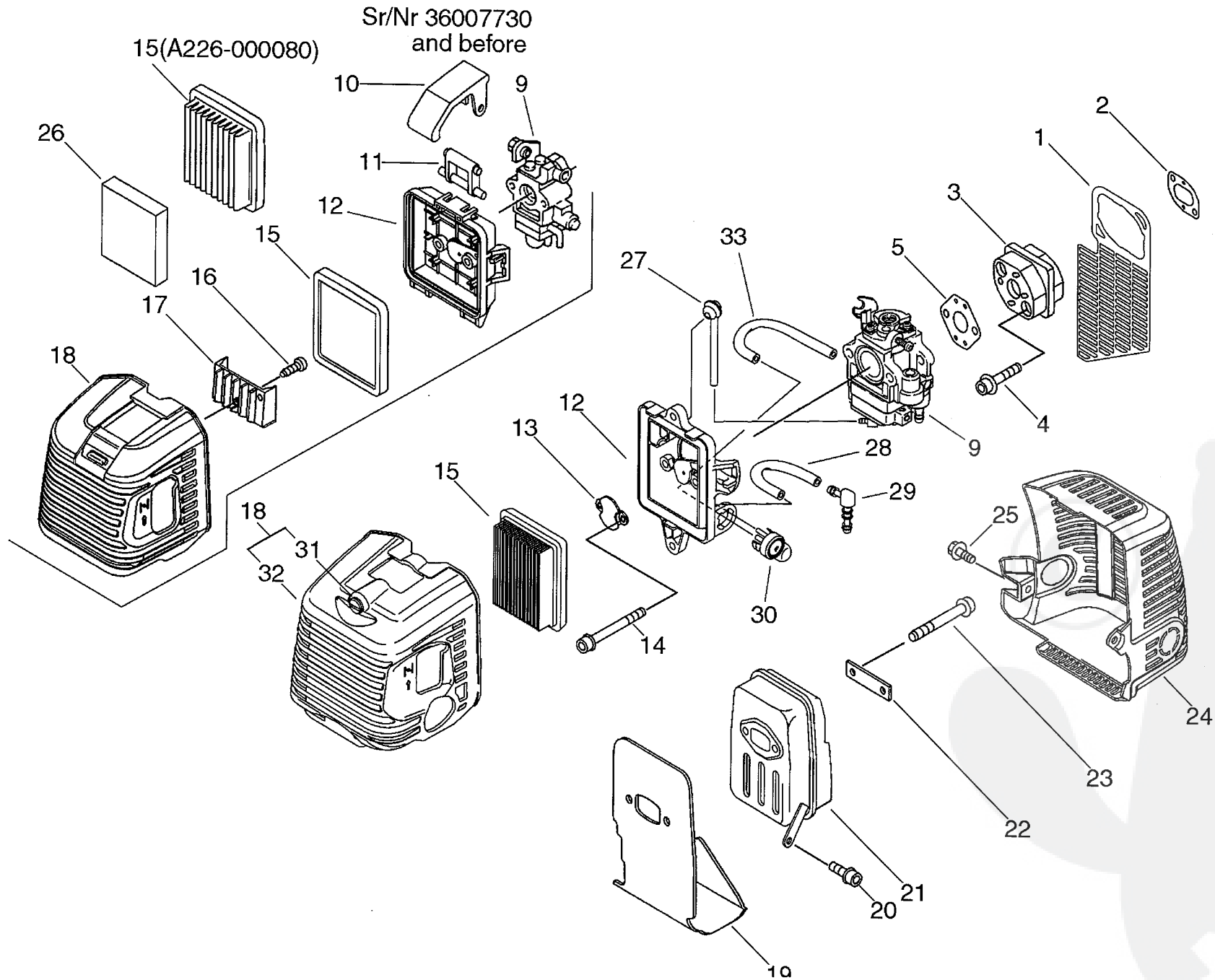


Parts List

Group:Trimmers/Brushcutters Model:SRM-4000(6digits)(35)(36) Section:Starter(3)

Key	Lv	Part Number	Q'ty	Description	Remarks	Note
20		A052-000010	1	PULLEY,ASM STARTER	Sus. by A052-000011	
20		A052-000011	1	PULLEY,ASM STARTER		
21	+	P022-002100	1	E-RING		
22	+	P022-002090	1	SPRING, RETURN		
23	+	177218-40630	1	PAWL, STARTER		
24		900502-00008	1	NUT 8 (3N)		
26		A051-000070	1	STARTER, RECOIL		
27	+	177236-06910	1	SCREW		
28	+	P022-002080	1	DRUM, STARTER		
29	+	177220-06310	1	SPRING, REWIND		
30	+	177226-06310	1	ROPE, STARTER		
31	+	177227-42030	1	GUIDE, ROPE		
32	+	177228-27030	1	GRIP, STARTER		
33		900106-05020	2	BOLT, H.S. 5*20	Sus. by 91121-05020	
35		890118-17930	1	LABEL, ECHO	Sus. by X502-000460	





P a r t s L i s t

Date:25/10/2010 Page: 1

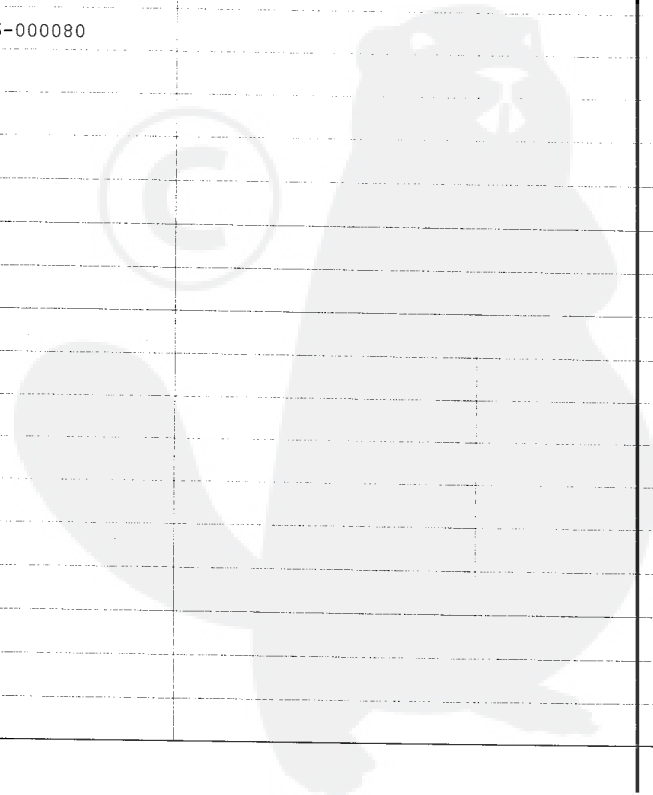
Group:Trimmers/Brushcutters Model:SRM-4000(6digits)(35)(36) Section:Air Cleaner, Muffler(Sr/Nr 36025064 and befor)(4)

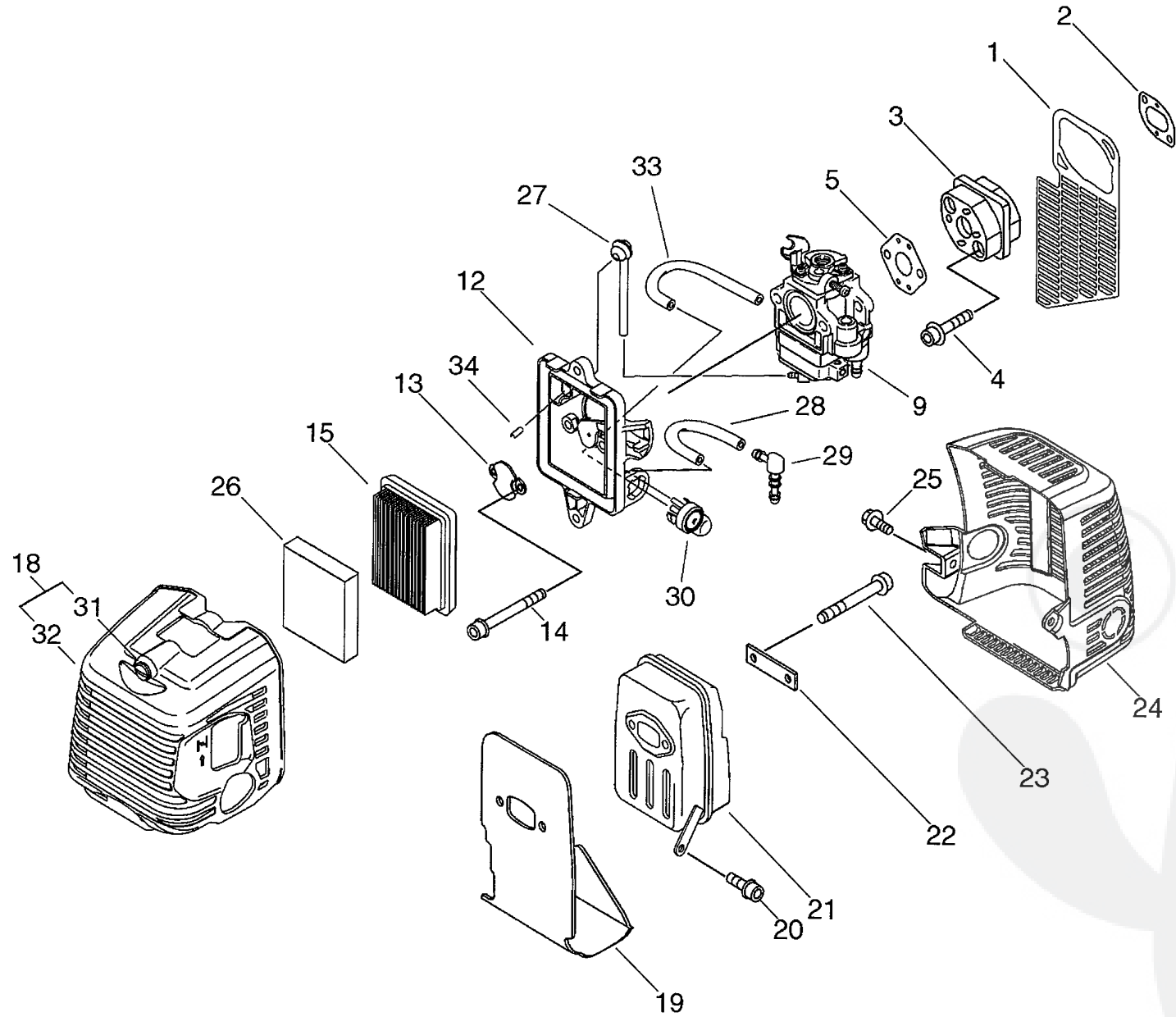
Key	Lv	Part Number	Q'ty	Description	Remarks	Note
1		A128-000060	1	PLATE, DUST	Sr/Nr 36003421 and after	
2		V103-000070	1	GASKET, INTAKE		
3		A200-000060	1	INSULATOR, INTAKE		
4		900106-05025	2	BOLT, H.S. 5*25		
5		V103-000080	1	GASKET, INTAKE		
9		A021-000280	1	CARBURETOR, DIAPHRAGM	Sus. by A021-001050	
9		A021-000281	1	CARBURETOR, DIAPHRAGM	Sus. by A021-001050	
9		A021-000282	1	CARBURETOR, DIAPHRAGM	Sus. by A021-001050	
9		A021-001050	1	CARBURETOR, DIAPHRAGM	Sr/Nr 36007730 and before	
9		A021-001170	1	CARBURETOR, DIAPHRAGM	Sus. by A021-001171	
10		A235-000060	1	KNOB, CLEANER LID	Sr/Nr 36007730 and before	
11		J485-000030	1	HINGE	Sr/Nr 36007730 and before	
12		P021-002490	1	CASE, AIR CLEANER	Sus. by P021-002491	
12		P021-002491	1	CASE, AIR CLEANER	Sr/Nr 36007730 and before	
12		P021-009590	1	CASE, AIR CLEANER	Sr/Nr 36007731 and after	
13		A244-000010	1	PLATE, PREVENT		
14		900105-05055	2	BOLT, H.S. 5*55		
15		A226-000080	1	ELEMENT, AIR FILTER	Sus. by A226-000220	
15		A226-000220	1	ELEMENT, AIR FILTER	Sr/Nr 36007730 and before	
15		A226-000320	1	ELEMENT, AIR FILTER	Sr/Nr 36007731 and after Sus. by A226-000360	
16		900253-04008	1	SCREW 4*8	Sr/Nr 36007730 and before	
17		A323-000000	1	PIECE, COVER	Sr/Nr 36007730 and before	
18		A232-000090	1	LID, CLEANER	Sus. by A232-000300	
18		A232-000091	1	LID, CLEANER	Sus. by A232-000300	
18		A232-000300	1	LID, CLEANER	Sr/Nr 36007730 and before	
18		P021-009600	1	LID, CLEANER ASY	Sr/Nr 36007731 and after	
31 +		V253-000100	2	SCREW, 5		
32 +		A232-000320	1	LID, CLEANER		

P a r t s L i s t

Group:Trimmers/Brushcutters Model:SRM-4000(6digits)(35)(36) Section:Air Cleaner, Muffler(Sr/Nr 36025064 and befor)(4)

Key	Lv	Part Number	Q'ty	Description	Remarks	Note
19		V104-000210	1	GASKET, EXHAUST		
20		900162-05012	1	BOLT, H.S. 5*12		
21		A300-000190	1	MUFFLER, EXHAUST	Sr/Nr 35999999 and before	
21		P021-008900	1	MUFFLER ASY	Sr/Nr 36001001 and after	
22		V150-000550	1	PLATE, EYE		
23		900105-06060	2	BOLT, H.S. 6*60		
24		A320-000080	1	COVER, MUFFLER		
25		900106-05012	1	BOLT, H.S. 5*12	Sus. by 91121-05012	
26		A226-000210	1	ELEMENT, AIR FILTER	OPTION	
27		132012-39330	1	PIPE, W/GROMMET	Sr/Nr 36007731 and after Sus. by 132012-39331	
28		437215-20760	1	PIPE 3*6*60	Sr/Nr 36007731 and after	
29		V186-000120	1	JOINT, PIPE	Sr/Nr 36007731 and after Sus. by V186-000080	
30		123181-39130	1	PUMP, PRIMER	Sr/Nr 36007731 and after	
33		V471-001560	1	PIPE	Sr/Nr 36007731 and after	



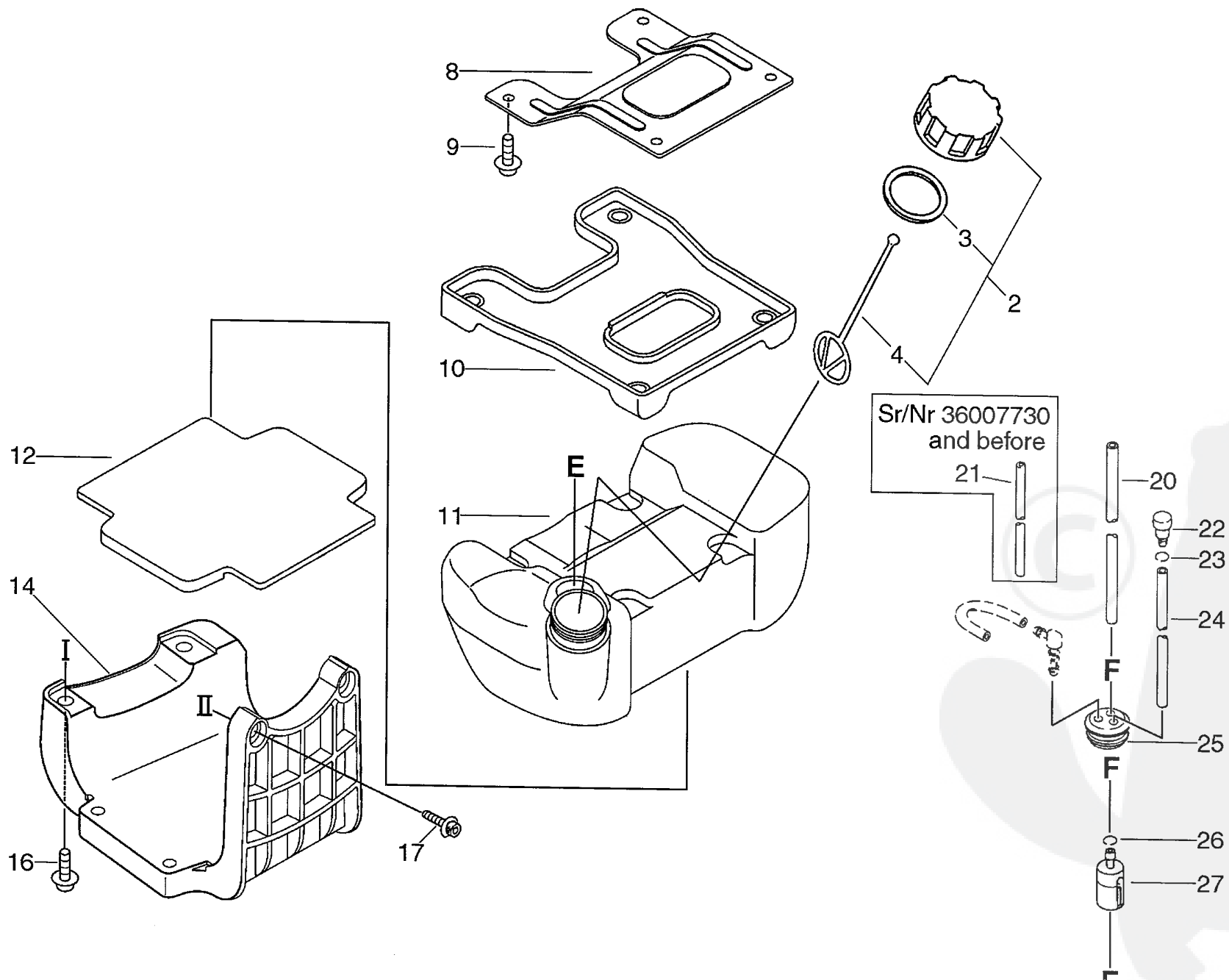


Parts List

Date:25/10/2010 Page: 1

Group:Trimmers/Brushcutters Model:SRM-4000(6digits)(35)(36) Section:Air Cleaner, Muffler(Sr/Nr 36025065 and after)(5)

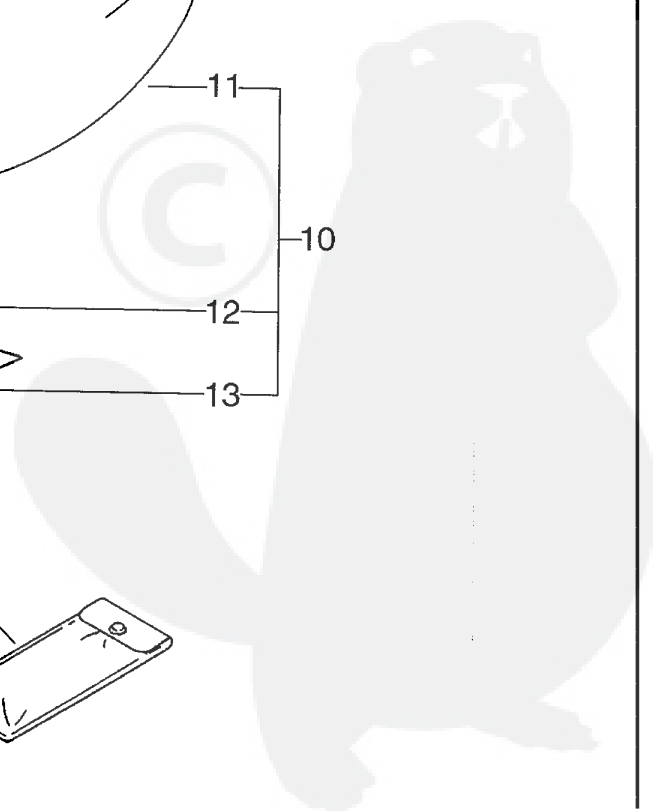
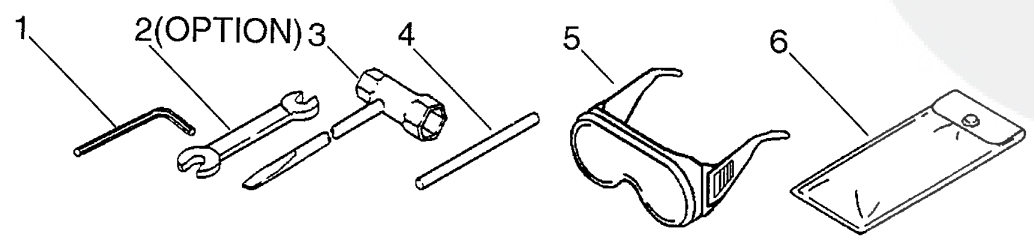
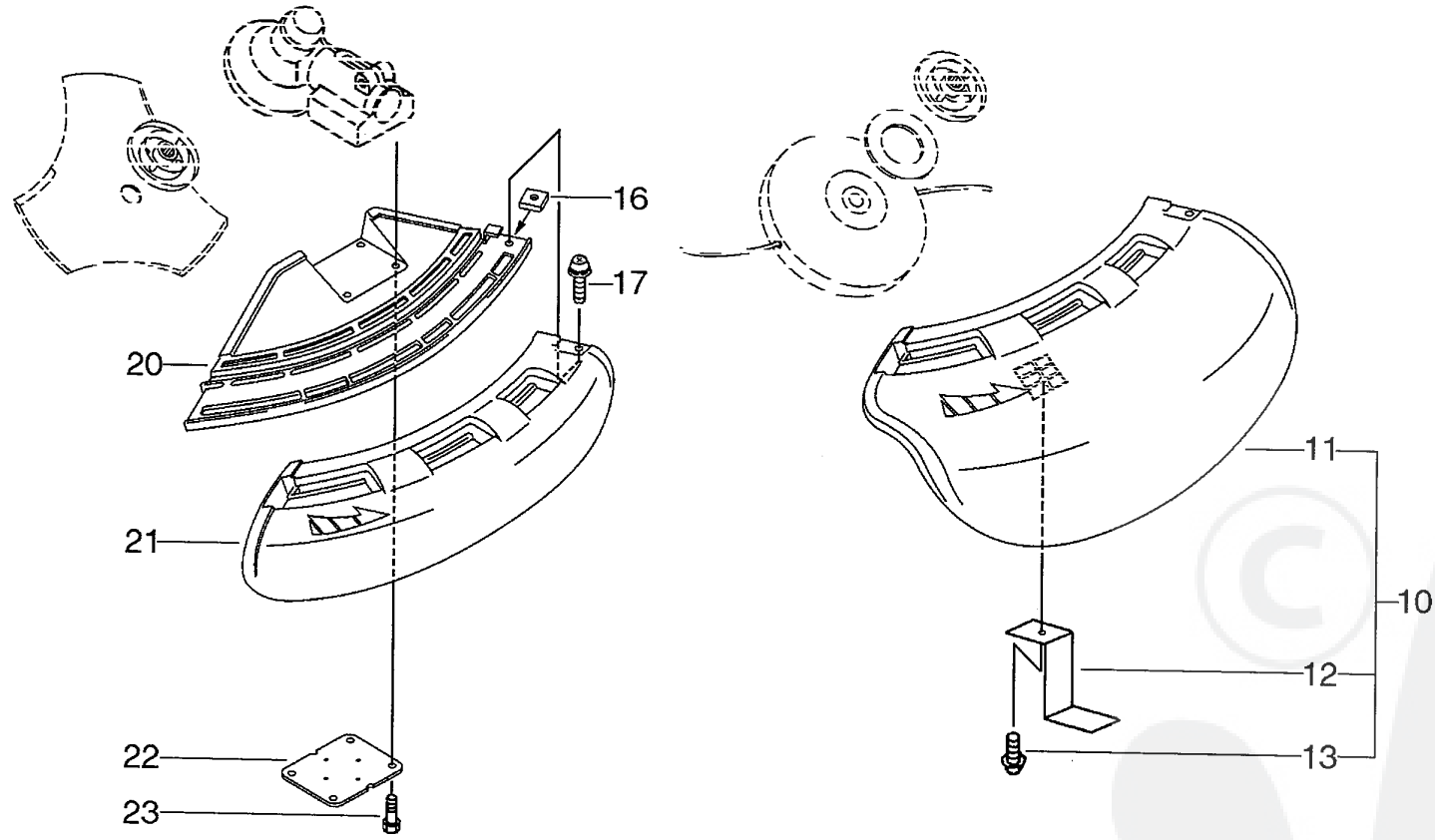
Key	Lv	Part Number	Q'ty	Description	Remarks	Note
1		A128-000060	1	PLATE, DUST		
2		V103-000070	1	GASKET, INTAKE		
3		A200-000060	1	INSULATOR, INTAKE		
4		900106-05025	2	BOLT, H.S. 5*25		
5		V103-000080	1	GASKET, INTAKE		
9		A021-001050	1	CARBURETOR, DIAPHRAGM		
9		A021-001170	1	CARBURETOR, DIAPHRAGM		
10		A235-000060	1	KNOB, CLEANER LID		
11		J485-000030	1	HINGE		
12		P021-002491	1	CASE, AIR CLEANER		
12		P021-009590	1	CASE, AIR CLEANER		
13		A244-000010	1	PLATE, PREVENT		
14		900105-05055	2	BOLT, H.S. 5*55		
15		A226-000220	1	ELEMENT, AIR FILTER		
15		A226-000360	1	ELEMENT, AIR FILTER		
16		900253-04008	1	SCREW 4*8		
17		A323-000000	1	PIECE, COVER		
18		A232-000300	1	LID, CLEANER		
18		P021-009600	1	LID, CLEANER ASY		
31	+	V253-000100	2	SCREW, 5		
32	+	A232-000320	1	LID, CLEANER		
19		V104-000210	1	GASKET, EXHAUST		
20		900162-05012	1	BOLT, H.S. 5*12		
21		P021-008900	1	MUFFLER ASY		
22		V150-000550	1	PLATE, EYE		
23		900105-06060	2	BOLT, H.S. 6*60		
24		A320-000080	1	COVER, MUFFLER		
25		91121-05012	1	BOLT, FLANGE		



P a r t s L i s t

Group:Trimmers/Brushcutters Model:SRM-4000(6digits)(35)(36) Section:Fuel Tank(6)

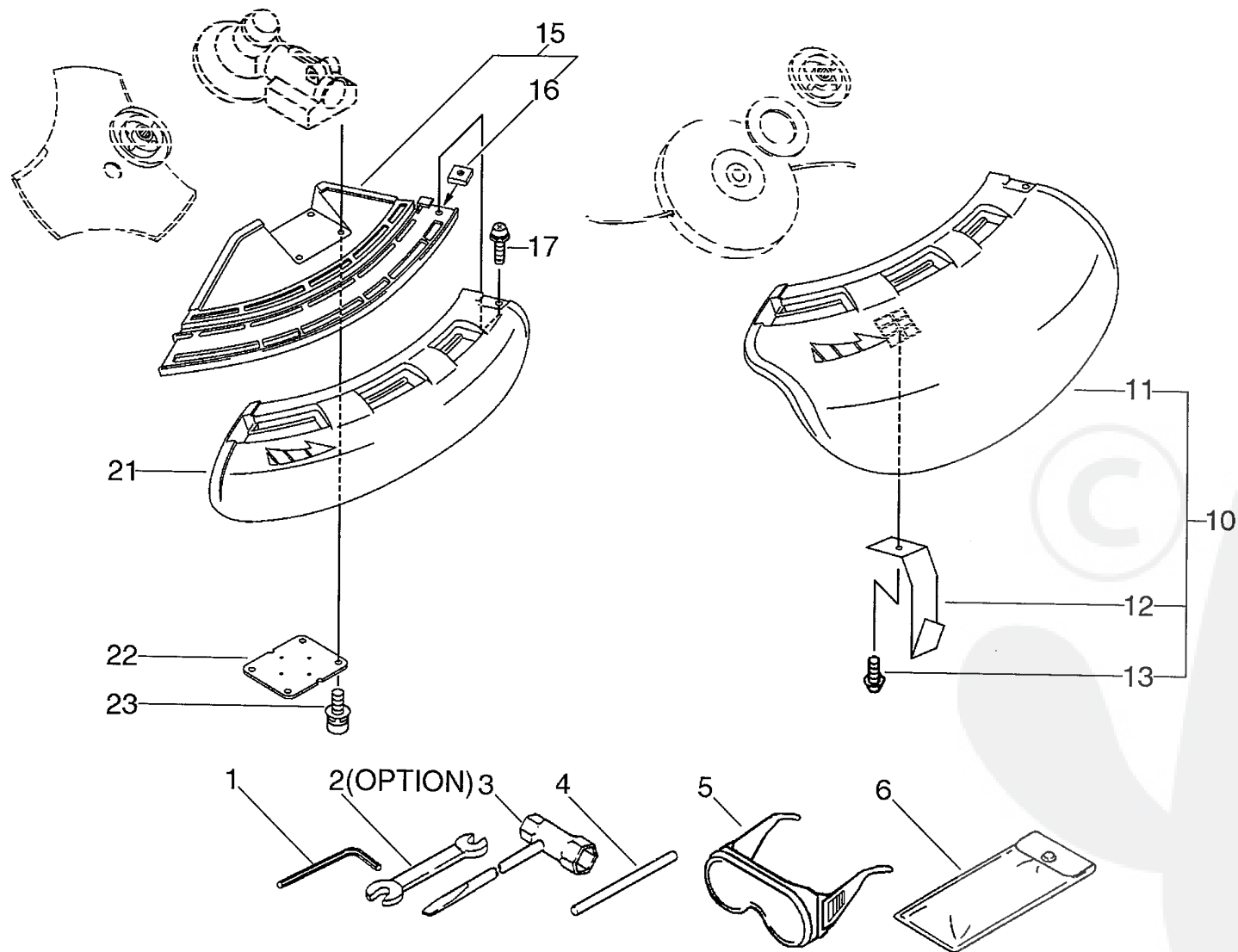
Key	Lv	Part Number	Q'ty	Description	Remarks	Note
2		131004-55530	1	CAP ASSY, FUEL TANK		
3	+	131016-55830	1	GASKET, FUEL CAP		
4	+	131051-56030	1	CLIP, FUEL CAP		
8		A393-000030	1	BRACKET, FUEL TANK		
9		900106-05012	4	BOLT, H.S. 5*12		
10		A390-000000	1	SEAT, FUEL TANK		
11		A350-000130	1	TANK, FUEL		
12		A390-000010	1	SEAT, FUEL TANK		
14		A393-000050	1	BRACKET, FUEL TANK		
16		900106-05020	2	BOLT, H.S. 5*20	Sus. by 91121-05020	
17		900106-05025	2	BOLT, H.S. 5*25	Sus. by 91121-05025	
20		132010-53630	1	PIPE		
21		437215-20760	1	PIPE 3*6*60	Sr/Nr 36007730 and before	
22		131300-56430	1	VALVE, CHECK		
23		132013-26630	1	CLIP		
24		132012-02960	1	PIPE, FUEL		
25		132115-55930	1	GROMMET, FUEL		
26		132013-26630	1	CLIP		
27		131205-19830	1	STRAINER, FUEL	Sus. by 131205-19831	



P a r t s L i s t

Group:Trimmers/Brushcutters Model:SRM-4000(6digits)(35)(36) Section:Shield, Tools(Sr/Nr 36022760 and before)(7)

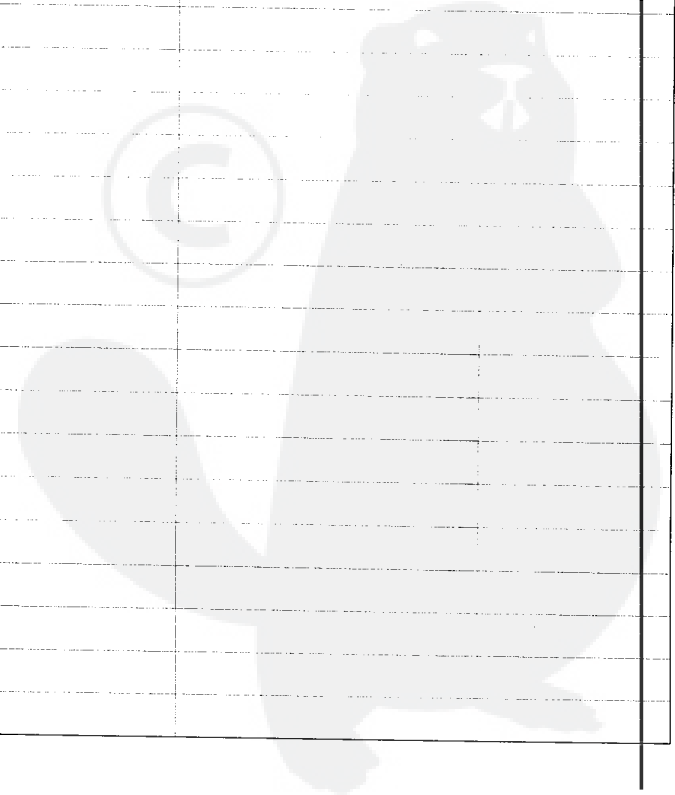
Key	Lv	Part Number	Q'ty	Description	Remarks	Note
1		895610-00130	1	L-WRENCH (4MM)		
2		895112-00330	1	SPANNER 8*10	OPTION	
3		895410-08030	1	WRENCH, W/S. DRIVER	Sus. by X602-000020	
3		X602-000020	1	TOOL,WRENCH		
4		897518-01131	1	LOCKING TOOL		
5		899580-68730	1	SAFETY GLASSES	Sus. by X690-000030	
5		X690-000030	1	GOGGLE		
6		898510-39130	1	BAG, TOOL		
10		P021-002620	1	SHIELD, BLADE(W/KNIFE	Sr/Nr 36022760 and before	
11	+	C550-000080	1	SHIELD, BLADE		
12	+	C554-000000	1	KNIFE, CORD	Sr/Nr 36022760 and before	
13	+	900252-05012	1	SCREW 5*12		
16		900565-00005	1	NUT		
17		900242-05018	1	SCREW 5*18		
20		C550-000100	1	SHIELD, BLADE		
21		C550-000090	1	SHIELD, BLADE		
22		699013-56830	1	PLATE, SHIELD		
23		900162-05025	4	BOLT, H.S. 5*25	Sus. by 91118-05025	

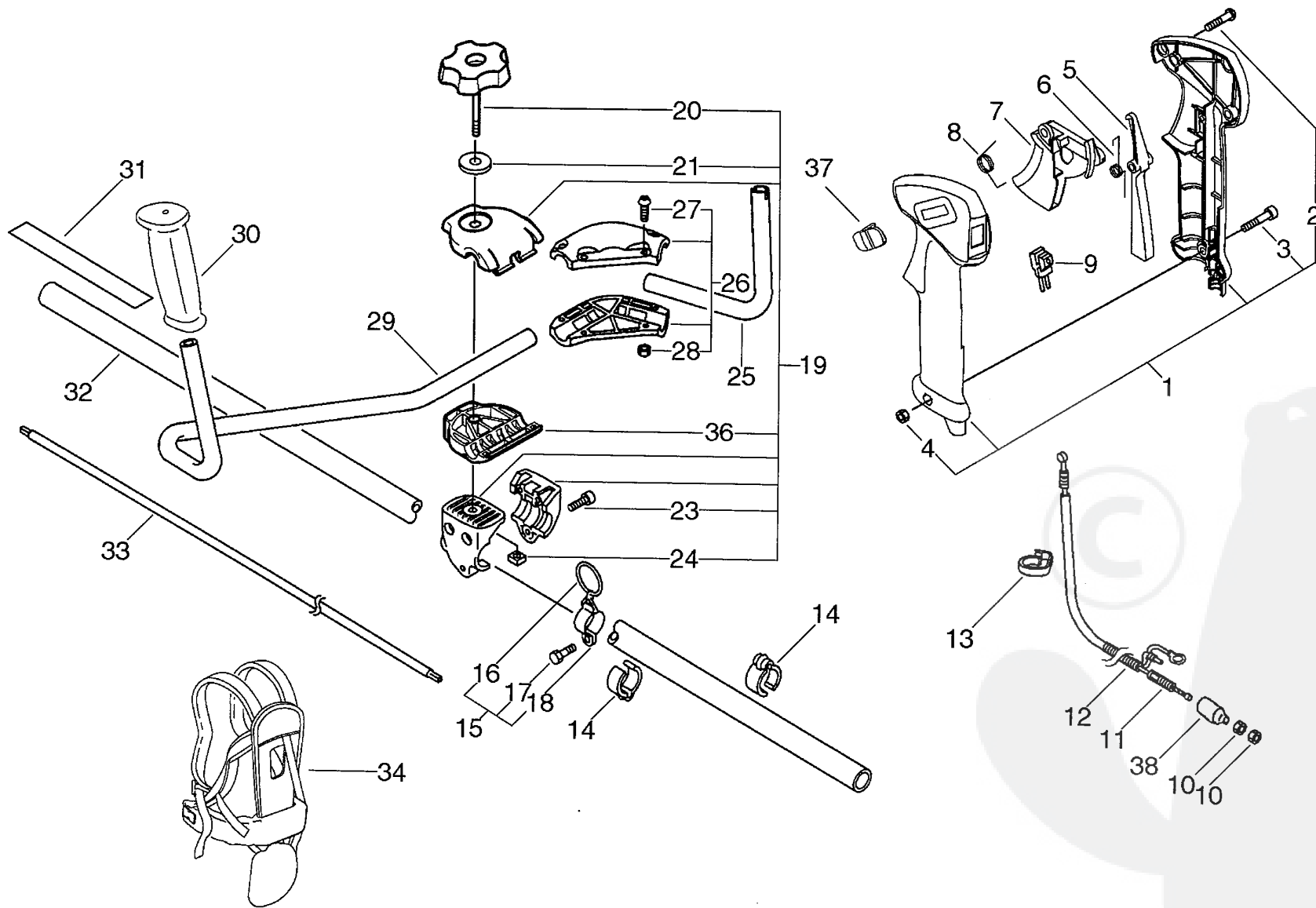


Parts List

Group:Trimmers/Brushcutters Model:SRM-4000(6digits)(35)(36) Section:Shield, Tools(Sr/Nr 36022761 and after)(8)

Key	Lv	Part Number	Q'ty	Description	Remarks	Note
1		895610-00130	1	L-WRENCH (4MM)		
2		895112-00330	1	SPANNER 8*10		
3		X602-000020	1	TOOL,WRENCH		
4		897518-01131	1	LOCKING TOOL		
5		X690-000030	1	GOGGLE		
6		898510-39130	1	BAG, TOOL		
10		P021-013770	1	SHIELD KIT	Sr/Nr 36022761 and after	
11	+	C550-000080	1	SHIELD,BLADE		
12	+	C554-000030	1	KNIFE, CORD	Sr/Nr 36022761 and after	
13	+	900252-05012	1	SCREW 5*12		
15		C550-000100	1	SHIELD,BLADE		
16	+	900565-00005	1	NUT		
17		900242-05018	1	SCREW 5*18		
21		C550-000090	1	SHIELD,BLADE		
22		699013-56830	1	PLATE, SHIELD		
23		91118-05025	4	BOLT		





Parts List

Group:Trimmers/Brushcutters Model:SRM-4000(6digits)(35)(36) Section:U-Handle(Sr/Nr 36003580 and before)(9)

Key	Lv	Part Number	Q'ty	Description	Remarks	Note
1		P021-002610	1	GRIP ASY, F-HANDLE	Sus. by P021-002612	
1		P021-002611	1	GRIP ASY, F-HANDLE	Sus. by P021-002612	
1		P021-002612	1	GRIP ASY, F-HANDLE		
2	+	900253-04016	3	SCREW 4*16		
3	+	900220-05030	1	SCREW 5*30		
4	+	900500-00005	1	NUT 5		
5		C460-000010	1	LOCKOUT, THROTTLE	Sus. by C460-000011	
5		C460-000011	1	LOCKOUT, THROTTLE		
6		V452-000050	1	SPRING, TORSION	Sr/Nr 35008035 and before	
6		V452-000130	1	SPRING, TORSION	Sr/Nr 35008036 to 36003580	
7		C450-000020	1	TRIGGER, THROTTLE	Sus. by C450-000022	
7		C450-000021	1	TRIGGER, THROTTLE	Sus. by C450-000022	
7		C450-000022	1	TRIGGER, THROTTLE		
8		V452-000060	1	SPRING, TORSION		
9		A440-000240	1	SWITCH, ON OFF		
10		900502-00006	2	NUT 6 (3N)		
11		V430-000390	1	CABLE, BOWDEN	Sus. by V430-000960	
11		V430-000960	1	CABLE, BOWDEN		
12		178127-43230	1	TUBE		
13		159112-09960	1	CLIP		
14		224924-52930	2	CLIP		
15		301200-05230	1	HOOK ASS'Y		
16	+	301015-05330	1	HOOK, BAND		
17	+	900105-05012	1	BOLT, H.S. 5*12		
18	+	301210-04630	1	HOOK		
19		P021-002760	1	BRACKET ASY, HANDLE	Sus. by P021-002761	
19		P021-002761	1	BRACKET ASY, HANDLE		
20	+	V299-000110	1	KNOB, FASTENER		

P a r t s L i s t

Group:Trimmers/Brushcutters Model:SRM-4000(6digits)(35)(36) Section:U-Handle(Sr/Nr 36003580 and before)(9)

Key	Lv	Part Number	Q'ty	Description	Remarks	Note
21	+	605014-54230	1	WASHER		
23	+	900162-05030	3	BOLT, H.S. 5*30		
24	+	900565-50008	1	NUT		
36	+	C423-000041	1	FIXTURE,HANDLE		
25		351214-52931	1	HANDLE		
26		351202-51430	1	BRACKET ASSY, HANDLE		
27	+	900162-05020	4	BOLT, H.S. 5*20		
28	+	900500-00005	4	NUT 5		
29		351010-52931	1	HANDLE, FRONT		
30		C403-000030	1	GRIP,HANDLE	Sus. by C403-000031	
30		C403-000031	1	GRIP,HANDLE		
31		890617-43130	1	LABEL,CAUTION		
32		C050-000050	1	PIPE,MAIN		
33		610011-49930	1	SHAFT, DRIVE		
34		301001-56831	1	HARNESS ASY,SHOULDER	Sus. by C062-000181	
34		C062-000180	1	HARNESS ASY,SHOULDER	Sus. by C062-000181	
34		C062-000181	1	HARNESS ASY,SHOULDER	Sus. by C062-000182	
37		C463-000000	1	KNOB,LATCH	Sr/Nr 35008036 to 36003580	
38		V494-000080	1	CAP	Sr/Nr 35006536 to 36003580	

P a r t s L i s t

Date:25/10/2010 Page: 1

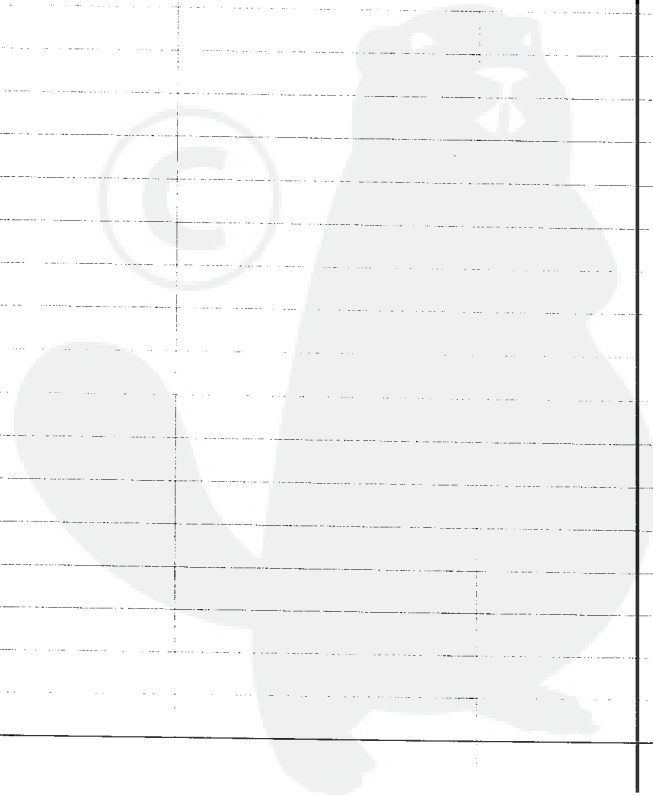
Group:Trimmers/Brushcutters Model:SRM-4000(6digits)(35)(36) Section:U-Handle(Sr/Nr 36003581 to 36024674)(10)

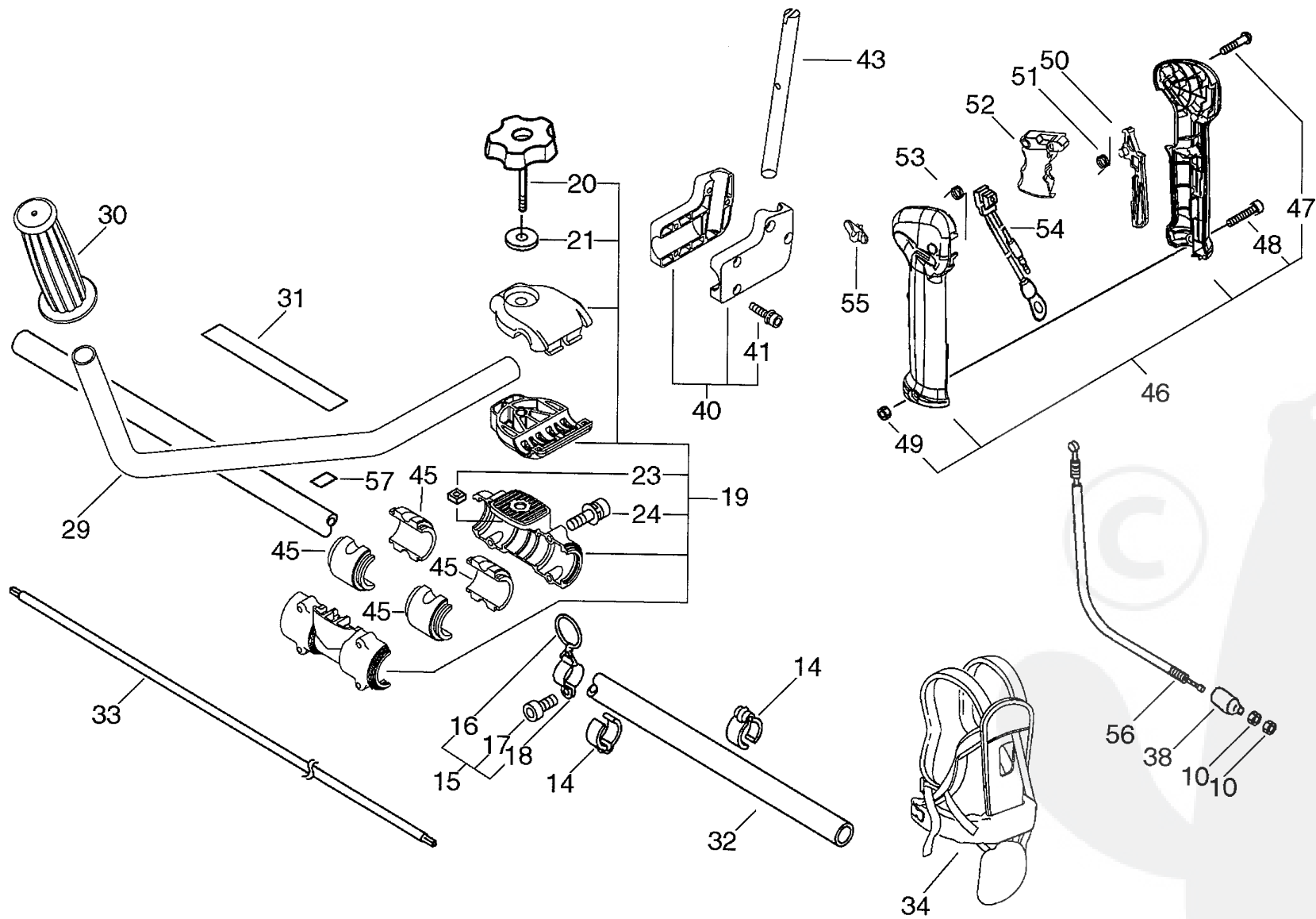
Key	Lv	Part Number	Q'ty	Description	Remarks	Note
1		P021-002612	1	GRIP ASY, F-HANDLE	Sr/Nr 36003581 to 36024674	
2	+	900253-04016	3	SCREW 4*16	Sr/Nr 36003581 to 36024674	
3	+	900220-05030	1	SCREW 5*30	Sr/Nr 36003581 to 36024674	
4	+	900500-00005	1	NUT 5		
5		C460-000011	1	LOCKOUT, THROTTLE	Sr/Nr 36003581 to 36024674	
6		V452-000130	1	SPRING, TORSION	Sr/Nr 36003581 to 36024674	
7		C450-000022	1	TRIGGER, THROTTLE	Sr/Nr 36003581 to 36024674	
8		V452-000060	1	SPRING, TORSION	Sr/Nr 36003581 to 36024674	
9		A440-000610	1	SWITCH, ON OFF	Sr/Nr 36003581 to 36024674	
10		900502-00006	2	NUT 6 (3N)		
11		V430-001470	1	CABLE, BOWDEN	Sr/Nr 36003581 to 36024674	
12		V475-003590	1	TUBE	Sr/Nr 36003581 to 36024674	
14		224924-52930	2	CLIP		
15		301200-05230	1	HOOK ASS'Y	Sus. by P021-012660	
16	+	301015-05330	1	HOOK, BAND		
17	+	900105-05012	1	BOLT, H.S. 5*12	Sus. by 91119-05012	
18	+	301210-04630	1	HOOK		
19		P021-009220	1	BRACKET ASY, HANDLE	Sus. by P021-009221	
19		P021-009221	1	BRACKET ASY, HANDLE	Sus. by P021-012750	
20	+	V299-000110	1	KNOB, FASTENER		
21	+	605014-54230	1	WASHER		
23	+	900565-50008	1	NUT		
24	+	900162-05035	4	BOLT, H.S. 5*35	Sus. by 91118-05035	
29		C400-000400	1	HANDLE, FRONT		
30		351213-47531	1	GRIP, HANDLE		
31		890617-43130	1	LABEL, CAUTION		
32		C050-000050	1	PIPE, MAIN	Sus. by C050-000880	
33		610011-49930	1	SHAFT, DRIVE	Sus. by 610011-49931	

Parts List

Group:Trimmers/Brushcutters Model:SRM-4000(6digits)(35)(36) Section:U-Handle(Sr/Nr 36003581 to 36024674)(10)

Key	Lv	Part Number	Q'ty	Description	Remarks	Note
34		C062-000180	1	HARNESS, SHOULDER	Sus. by C062-000181	
34		C062-000181	1	HARNESS, SHOULDER		
37		C463-000000	1	KNOB, LATCH	Sr/Nr 36003581 to 36024674	
38		V494-000080	1	CAP		
40		351302-47530	1	BRACKET, HANDLE	Sus. by P021-012730	
41 +		900162-05025	4	BOLT, H.S. 5*25	Sus. by 91118-05025	
43		351210-47530	1	HANDLE, REAR		
45		V420-001120	4	CUSHION		



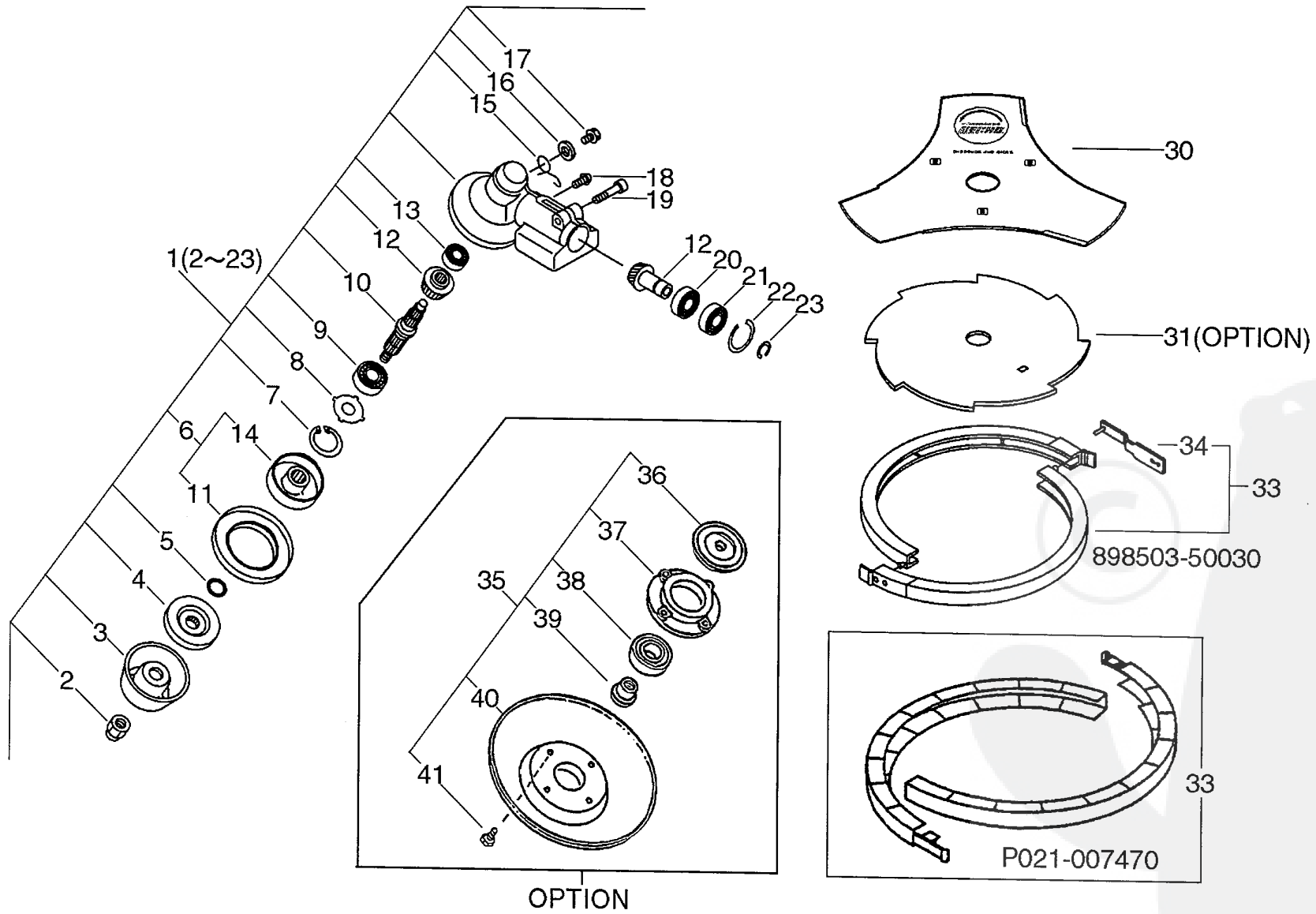


P a r t s L i s t

Date:25/10/2010 Page: 1

Group:Trimmers/Brushcutters Model:SRM-4000(6digits)(35)(36) Section:U-Handle(Sr/Nr 36024674 and after)(11)

Key	Lv	Part Number	Q'ty	Description	Remarks	Note
10		900502-00006	2	NUT 6 (3N)		
14		224924-52930	2	CLIP		
15		P021-012660	1	HOOK ASY		
16	+	301015-05330	1	HOOK, BAND		
17	+	91119-05012	1	BOLT		
18	+	301210-04630	1	HOOK		
19		P021-012750	1	BRACKET ASY, HANDLE		
20	+	V299-000110	1	KNOB, FASTENER		
21	+	605014-54230	1	WASHER		
23	+	900565-50008	1	NUT		
24	+	91118-05035	4	BOLT		
29		C400-000400	1	HANDLE, FRONT		
30		351213-47531	1	GRIP, HANDLE		
31		890617-43130	1	LABEL, CAUTION		
32		C050-000050	1	PIPE, MAIN		
33		610011-49930	1	SHAFT, DRIVE		
34		C062-000182	1	HARNES, SHOULDER		
38		V494-000080	1	CAP		
40		P021-012730	1	BRACKET ASY, HANDLE		
41	+	91118-05025	4	BOLT		
43		351210-47530	1	HANDLE, REAR		
45		V420-001120	4	CUSHION		
46		P021-014090	1	GRIP ASY, F-HANDLE	Sr/Nr 36024674 and after	
47	+	900256-04016	3	SCREW 4*16	Sr/Nr 36024674 and after	
48	+	91119-05030	1	BOLT	Sr/Nr 36024674 and after	
49	+	900500-00005	1	NUT 5		
50		C460-000110	1	LOCKOUT, THROTTLE	Sr/Nr 36024674 and after	
51		V452-000360	1	SPRING, TORSION	Sr/Nr 36024674 and after	



P a r t s L i s t

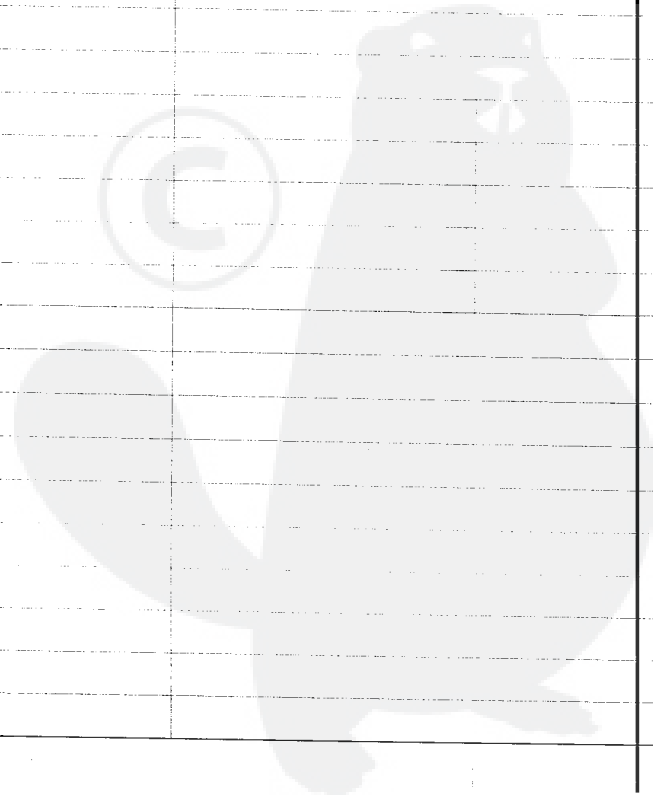
Group:Trimmers/Brushcutters Model:SRM-4000(6digits)(35)(36) Section:Gear Case(U-Handle Type), Blade(12)

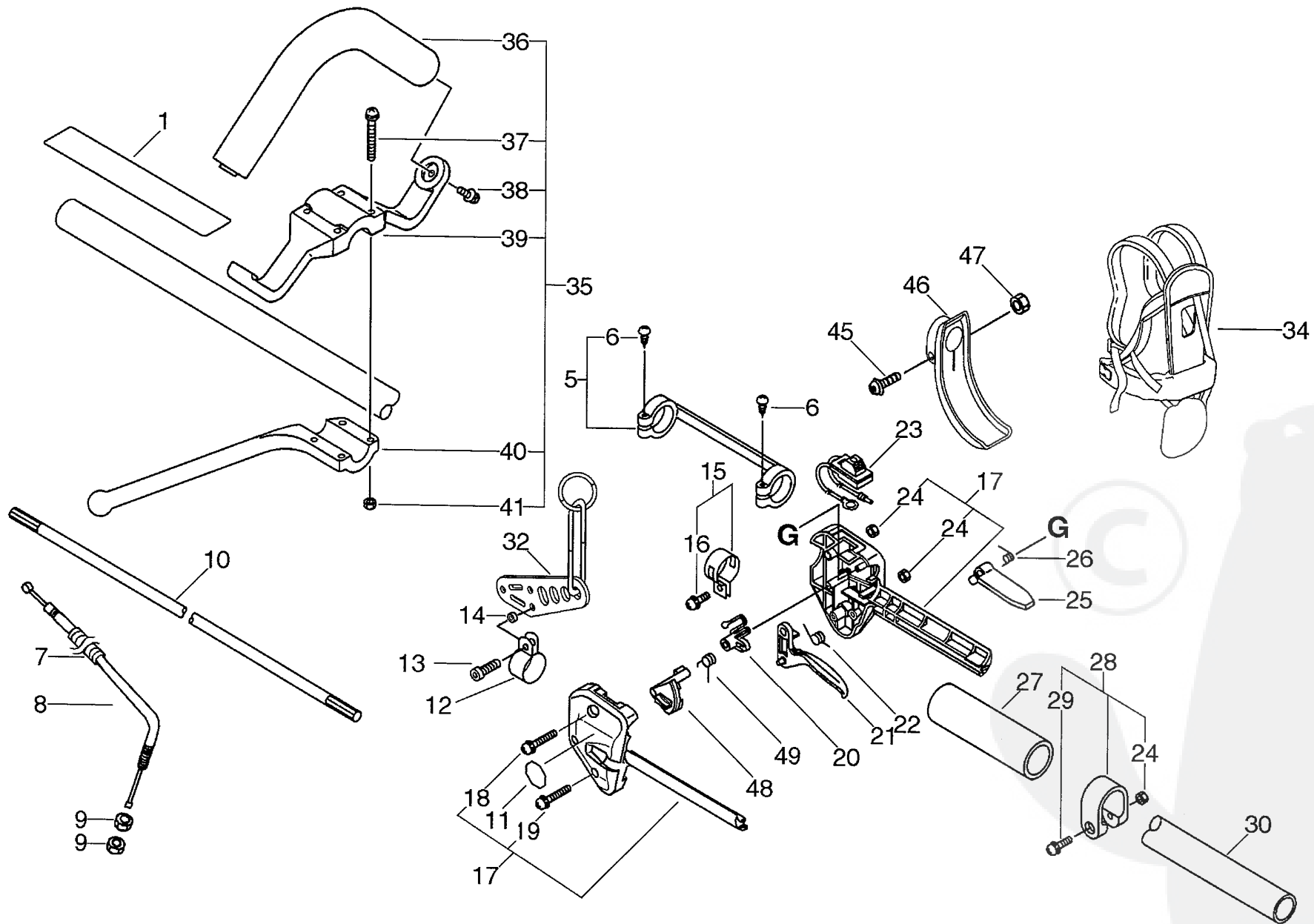
Key	Lv	Part Number	Q'ty	Description	Remarks	Note
1		610400-56931	1	CASE ASY, GEAR	Sus. by 610400-56932	
1		610400-56932	1	CASE ASY, GEAR	Sus. by P021-012590	
1		P021-012590	1	CASE ASY, GEAR	Sus. by P021-012591	
2	+	610320-52130	1	NUT 10		
3	+	699229-56830	1	PLATE, COVER		
4	+	610314-52130	1	PLATE, ADAPTER (L)		
5	+	900720-00012	1	O-RING 12		
6	+	C535-000000	1	FIXTURE, BLADE	Sus. by C535-000001	
6	+	C535-000001	1	FIXTURE, BLADE		
11	++	610352-56830	1	PLATE, CUP		
14	++	C535-000010	1	FIXTURE, BLADE	Sus. by C535-000011	
14	++	C535-000011	1	FIXTURE, BLADE		
7	+	900702-00032	1	CIRCLIP 32		
8	+	610444-56830	1	WASHER		
9	+	900812-06201	1	BEARING, BALL 6201		
10	+	610310-56930	1	SHAFT, P.T.O.	Sus. by 610310-56931	
12	+	610300-56930	1	GEAR SET		
13	+	900810-00629	1	BEARING, BALL 629		
15	+	610473-52131	1	SPRING		
16	+	900603-50008	1	WASHER		
17	+	610434-50030	1	BOLT 8* 6	Sus. by 610434-50031	
17	+	610434-50031	1	BOLT 8* 8		
18	+	900242-05010	1	SCREW 5*10		
19	+	900162-06030	1	BOLT, H.S. 6*30	Sus. by 91118-06030	
20	+	900800-06001	1	BEARING, BALL 6001		
21	+	900803-06001	1	BEARING, BALL 6001		
22	+	900702-00028	1	CIRCLIP 28		
23	+	900701-00012	1	CIRCLIP 12		

P a r t s L i s t

Group:Trimmers/Brushcutters Model:SRM-4000(6digits)(35)(36) Section:Gear Case(U-Handle Type), Blade(12)

Key	Lv	Part Number	Q'ty	Description	Remarks	Note
30		X405-000000	1	SAW,BUSH CUTTER	Sus. by X405-000001	
30		X405-000001	1	SAW,BUSH CUTTER		
33		898503-50030	1	SCABBARD KIT, BLADE	Sus. by P021-007470	
33		P021-007470	1	SCABBARD KIT, BLADE		
34	+	898562-43230	1	FIXTURE, SCABBARD	Can be used on 898503-50030 only	
31		696001-55630	1	BLADE, 8-CUTTER 10IN	Sus. by 696001-55631	
31		696001-55631	1	BLADE, 8-CUTTER 10IN	OPTION	
32		695001-55630	1	SAW,CIRCULAR 10*80T	Sus. by 695001-55631	
32		695001-55631	1	SAW,CIRCULAR 10*80T	OPTION	
35		699200-56830	1	CAP ASSY, FREE	OPTION	
36	+	610313-56830	1	PLATE, ADAPTER (U)	OPTION	
37	+	699226-05430	1	HOLDER, BEARING	OPTION	
38	+	900814-06202	1	BEARING, BALL 6202	OPTION	
39	+	699227-04630	1	NUT	OPTION	
40	+	699228-08930	1	PLATE, COVER	OPTION	
41	+	900141-05012	4	BOLT 5*12	OPTION	





P a r t s L i s t

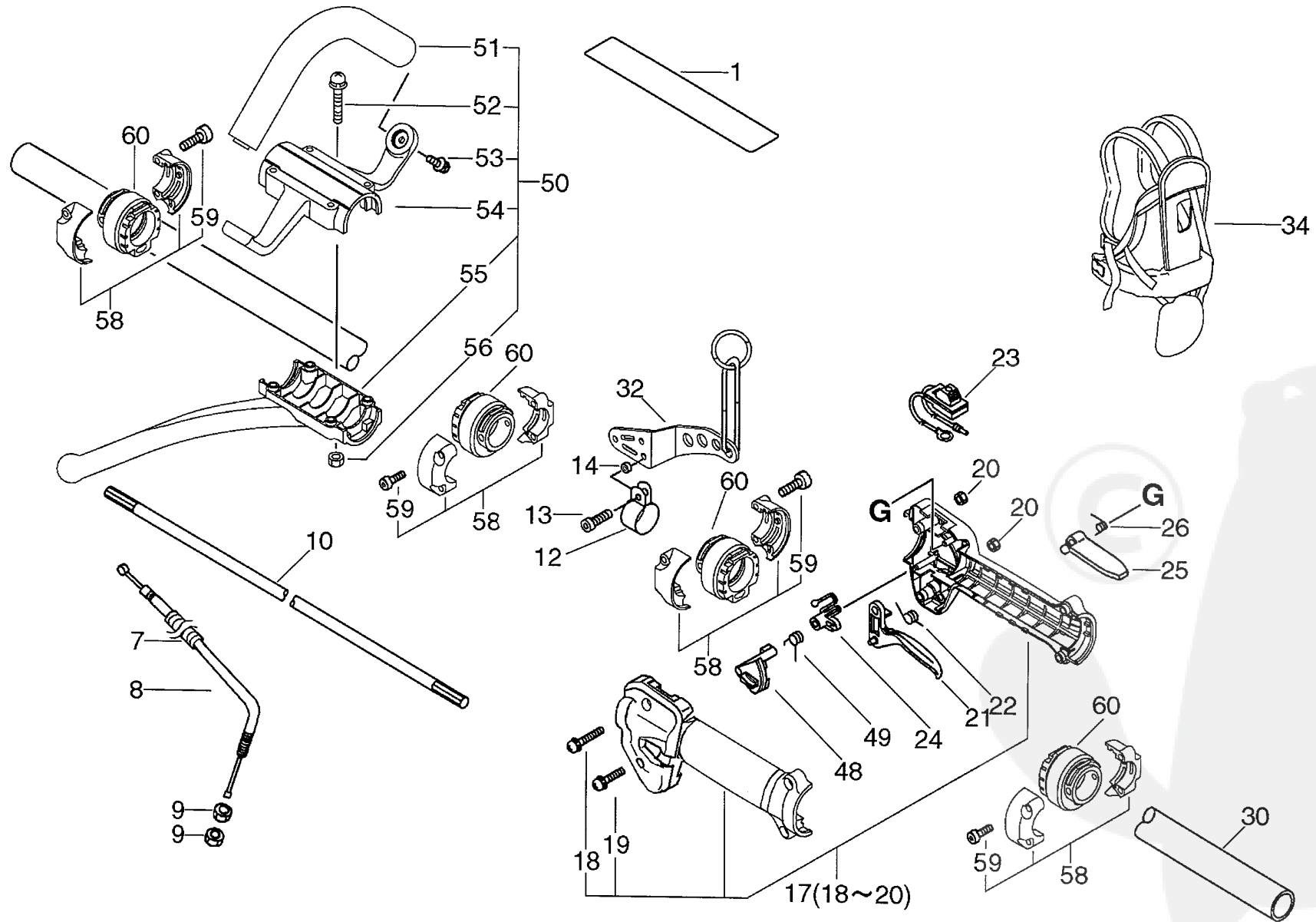
Group:Trimmers/Brushcutters Model:SRM-4000(6digits)(35)(36) Section:Loop Handle(Sr/Nr 36004450 and before)(13)

Key	Lv	Part Number	Q'ty	Description	Remarks	Note
1		X505-000140	1	LABEL, CAUTION		
5		610281-42230	1	COLLER		
6	+	900253-04025	2	SCREW 4*25		
7		178127-06960	1	TUBE		
8		V430-000330	1	CABLE, BOWDEN		
9		900502-00006	2	NUT 6 (3N)		
10		610011-49930	1	SHAFT, DRIVE		
11		890157-39130	1	LABEL, SWITCH	Sr/Nr 35007935 and before	
12		301207-07530	2	HOOK		
13		900105-05018	2	BOLT, H.S. 5*18		
14		V353-000090	2	COLLAR, 5		
15		301200-42230	1	HOOK ASSY		
16	+	900242-05014	1	SCREW 5*14		
17		178003-51830	1	BRACKET SET, THROTTLE	Sr/Nr 35007935 and before	
17		P021-005890	1	BRACKET SET, THROTTLE	Sr/Nr 35007936 to 36004450	
18	+	900242-05035	1	SCREW 5*35		
19	+	900242-05025	1	SCREW 5*25		
24	+	900500-00005	2	NUT 5		
20		178012-52630	1	LOCKOUT, THROTTLE	Sr/Nr 35007935 and before	
20		C461-000000	1	LOCKOUT, THROTTLE	Sr/Nr 35007936 to 36004450	
21		178010-52130	1	CONTROL, THROTTLE	Sr/Nr 35007935 and before	
21		C450-000110	1	CONTROL, THROTTLE	Sr/Nr 35007936 to 36004450	
22		178043-42230	1	SPRING, THR. RETURN		
23		A440-000230	1	SWITCH, ON OFF		
25		178090-52630	1	LOCKOUT, T. CONTROL	Sus. by 178090-52632	
25		178090-52631	1	LOCKOUT, T. CONTROL	Sus. by 178090-52632	
25		178090-52632	1	LOCKOUT, T. CONTROL		
26		178013-52630	1	SPRING, THR. LOCK		

P a r t s L i s t

Group:Trimmers/Brushcutters Model:SRM-4000(6digits)(35)(36) Section:Loop Handle(Sr/Nr 36004450 and before)(13)

Key	Lv	Part Number	Q'ty	Description	Remarks	Note
27		351213-51830	1	GRIP, FRONT HANDLE		
28		610272-51830	1	BAND		
24	+	900500-00005	1	NUT 5		
29	+	900242-05028	1	SCREW 5*28		
30		C050-000050	1	PIPE,MAIN		
32		C624-000000	1	HANGER,HARNESS		
34		301001-56831	1	HARNESS ASY, SHOULDER	Sus. by C062-000181	
34		C062-000180	1	HARNESS ASY, SHOULDER	Sus. by C062-000181	
34		C062-000181	1	HARNESS ASY, SHOULDER		
35		351201-50430	1	HANDLE ASSY, LOOP		
36	+	351205-07130	1	HANDLE		
37	+	900242-05035	4	SCREW 5*35		
38	+	900242-05014	2	SCREW 5*14		
39	+	351232-07130	1	BRACKET, HANDLE 28		
40	+	351643-55630	1	BRACKET, HANDLE		
41	+	900500-00005	4	NUT 5		
45		900242-05025	1	SCREW 5*25		
46		A248-000000	1	GUARD, LEVER		
47		900500-00005	1	NUT 5		
48		C461-000010	1	LATCH, THROTTLE	Sr/Nr 35007936 to 36004450	
49		V452-000120	1	SPRING, TORSION	Sr/Nr 35007936 to 36004450	

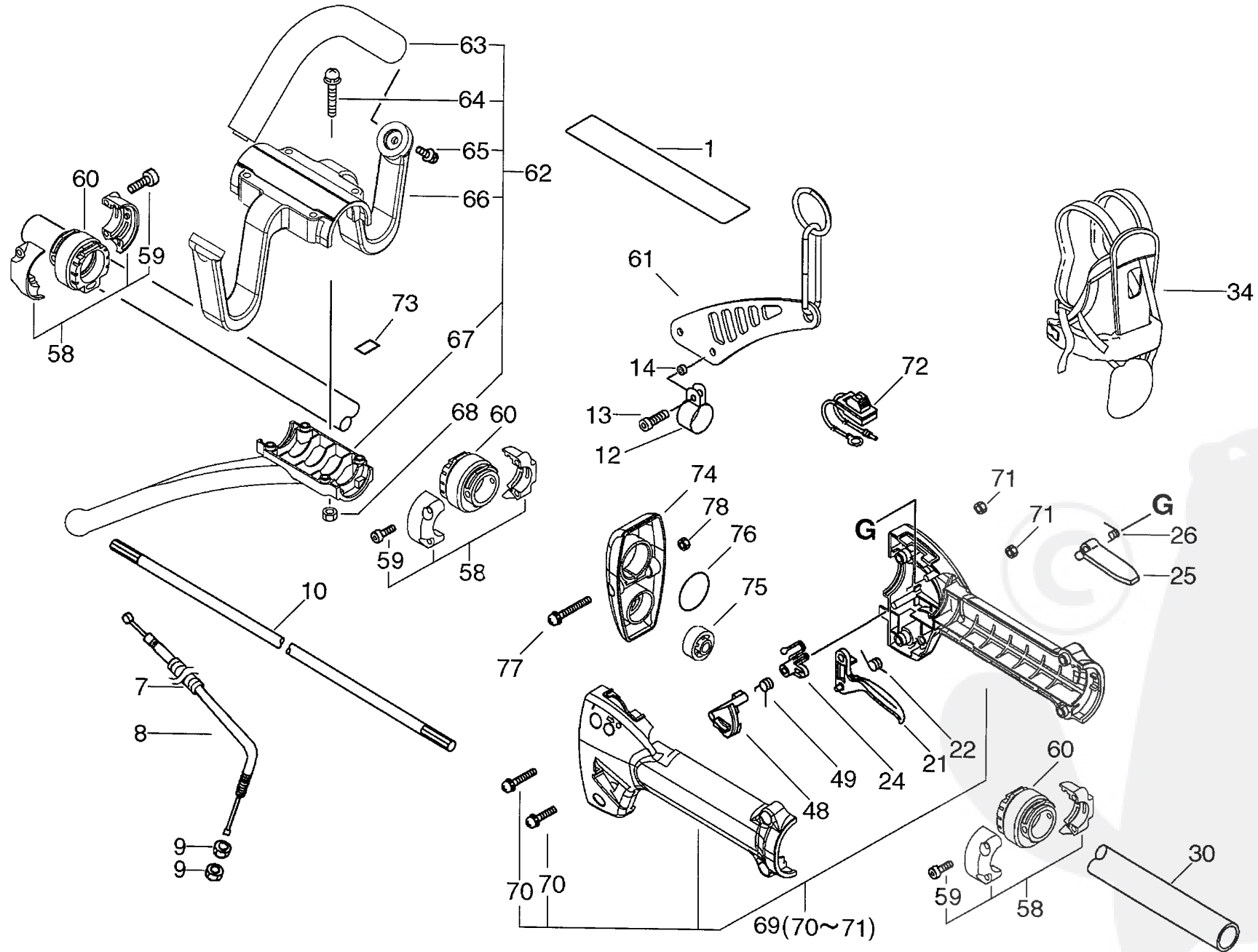


Parts List

Date:25/10/2010 Page: 1

Group:Trimmers/Brushcutters Model:SRM-4000(6digits) (35) (36) Section:Loop Handle(Sr/Nr 36004451 to 36022353) (14)

Key	Lv	Part Number	Q'ty	Description	Remarks	Note
1		X505-000140	1	LABEL, CAUTION		
7		V475-003580	1	TUBE		
8		V430-001460	1	CABLE, BOWDEN		
9		900502-00006	2	NUT 6 (3N)		
10		610011-49930	1	SHAFT, DRIVE		
12		301207-07530	2	HOOK		
13		900105-05018	2	BOLT, H.S. 5*18	Sus. by 91119-05018	
14		V353-000090	2	COLLAR, 5		
17		P021-007990	1	BRACKET SET, THROTTLE	Sr/Nr 36004451 to 36022353	
18	+	900242-05035	1	SCREW 5*35	Sr/Nr 36004451 to 36022353	
19	+	900242-05025	3	SCREW 5*25		
20	+	900500-00005	4	NUT 5		
21		C450-000110	1	TRIGGER, THROTTLE		
22		V452-000200	1	SPRING, TORSION		
23		A440-000600	1	SWITCH, ON OFF		
24		C461-000000	1	LATCH, THROTTLE		
25		178090-52631	1	LOCKOUT, T. CONTROL	Sus. by 178090-52632	
25		178090-52632	1	LOCKOUT, T. CONTROL		
26		178013-52630	1	SPRING, THR. LOCK		
30		C050-000050	1	PIPE, MAIN	Sus. by C050-000880	
32		C624-000020	1	HANGER, HARNESS	Sr/Nr 36004451 to 36022353	
34		C062-000180	1	HARNESS, SHOULDER	Sus. by C062-000181	
34		C062-000181	1	HARNESS, SHOULDER	Sus. by C062-000182	
48		C461-000010	1	LATCH, THROTTLE		
49		V452-000120	1	SPRING, TORSION		
50		P021-009200	1	HANDLE ASY, LOOP	Sr/Nr 36004451 to 36022353	
51	+	351205-07130	1	HANDLE		
52	+	900242-05035	4	SCREW 5*35		



P a r t s L i s t

Date:25/10/2010 Page: 1

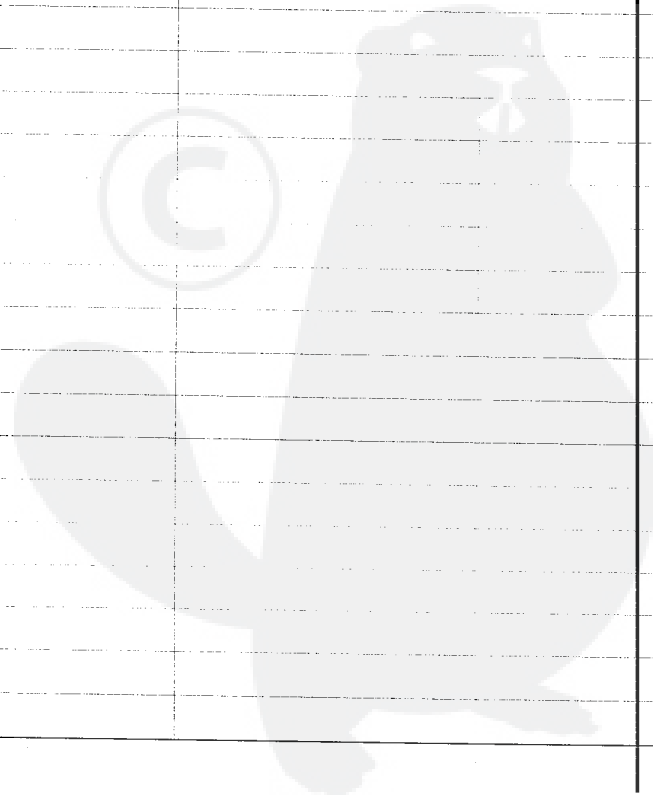
Group:Trimmers/Brushcutters Model:SRM-4000(6digits)(35)(36) Section:Loop Handle(Sr/Nr 36022354 and after)(15)

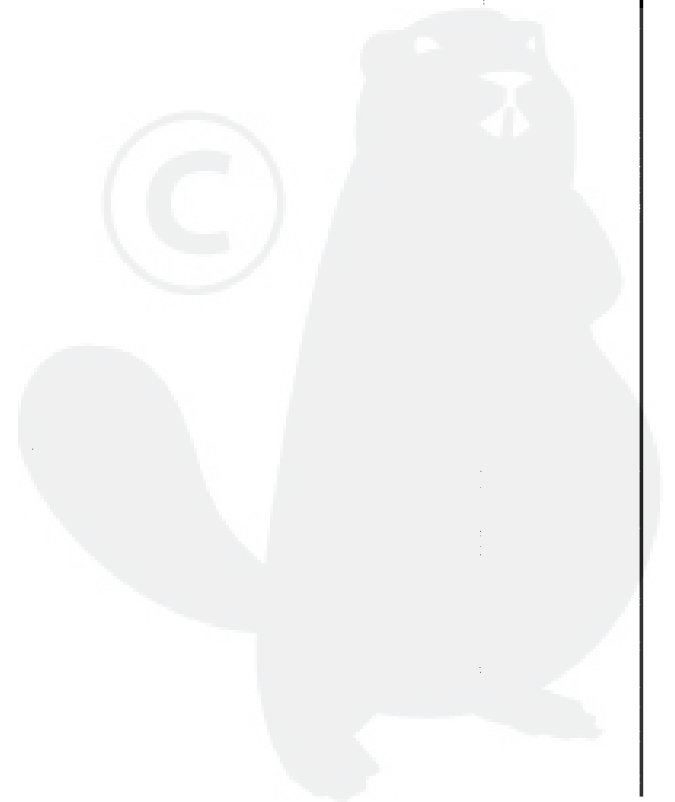
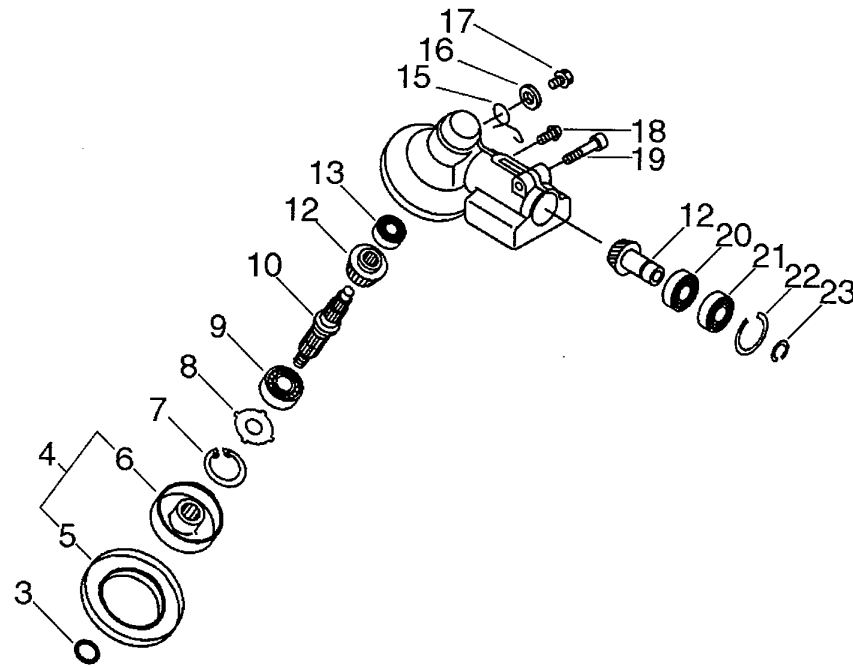
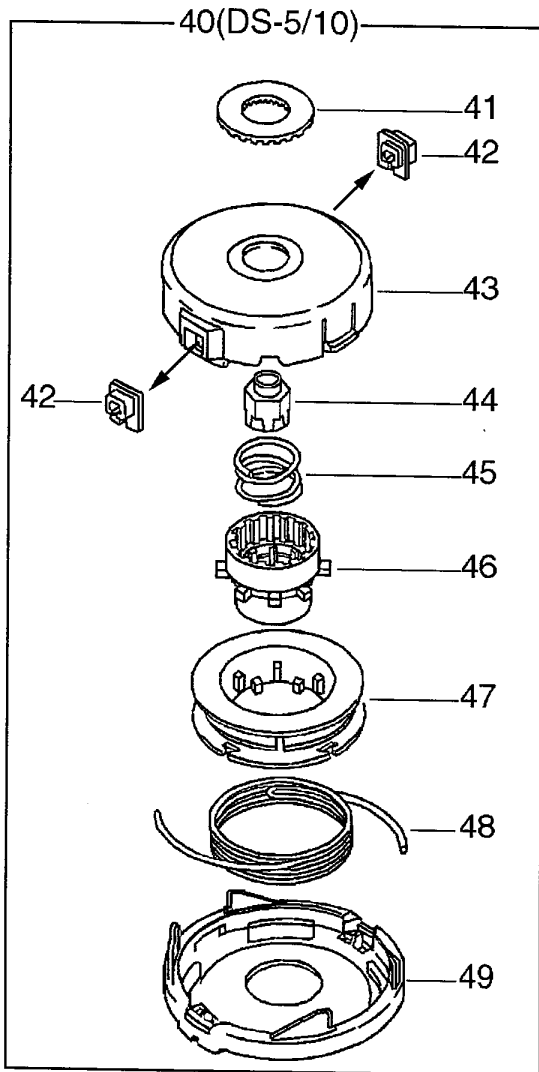
Key	Lv	Part Number	Q'ty	Description	Remarks	Note
1		X505-000140	1	LABEL, CAUTION		
7		V475-003580	1	TUBE		
8		V430-001460	1	CABLE, BOWDEN		
9		900502-00006	2	NUT 6 (3N)		
10		610011-49930	1	SHAFT, DRIVE		
12		301207-07530	2	HOOK		
13		91119-05018	2	BOLT		
14		V353-000090	2	COLLAR, 5		
21		C450-000110	1	TRIGGER, THROTTLE		
22		V452-000200	1	SPRING, TORSION		
24		C461-000000	1	LATCH, THROTTLE		
25		178090-52632	1	LOCKOUT, T. CONTROL		
26		178013-52630	1	SPRING, THR. LOCK		
30		C050-000880	1	PIPE, MAIN		
34		C062-000182	1	HARNES, SHOULDER		
48		C461-000010	1	LATCH, THROTTLE		
49		V452-000120	1	SPRING, TORSION		
58		P021-012640	3	BRACKET ASM., HANDLE		
59	+	91118-05025	6	BOLT		
60		V420-001061	3	CUSHION		
61		C624-000040	1	HANGER, HARNES	Sr/Nr 36022354 and after	
62		P021-009202	1	HANDLE ASY, LOOP	Sr/Nr 36022354 and after	
63	+	351205-07130	1	HANDLE		
64	+	900242-05035	4	SCREW 5*35		
65	+	900242-05014	2	SCREW 5*14		
66	+	C405-000270	1	BRACKET, HANDLE	Sr/Nr 36022354 and after	
67	+	C405-000160	1	BRACKET, HANDLE		
68	+	900500-00005	4	NUT 5		

Parts List

Group:Trimmers/Brushcutters Model:SRM-4000(6digits)(35)(36) Section:Loop Handle(Sr/Nr 36022354 and after)(15)

Key	Lv	Part Number	Q'ty	Description	Remarks	Note
69		P021-014170	1	BRACKET SET, THROTTLE	Sr/Nr 36022354 and after	
70	+	900238-05022	4	SCREW 5*22		
71	+	900500-00005	4	NUT 5		
72		A440-001080	1	SWITCH, ON OFF		
74		C423-000340	1	FIXTURE, HANDLE	Sr/Nr 36022354 and after	
75		V420-001720	1	CUSHION	Sr/Nr 36022354 and after	
76		900720-00032	1	O-RING 32	Sr/Nr 36022354 and after	
77		900238-05040	1	SCREW 5*40	Sr/Nr 36022354 and after	
78		900500-00005	1	NUT 5	Sr/Nr 36022354 and after	





P a r t s L i s t

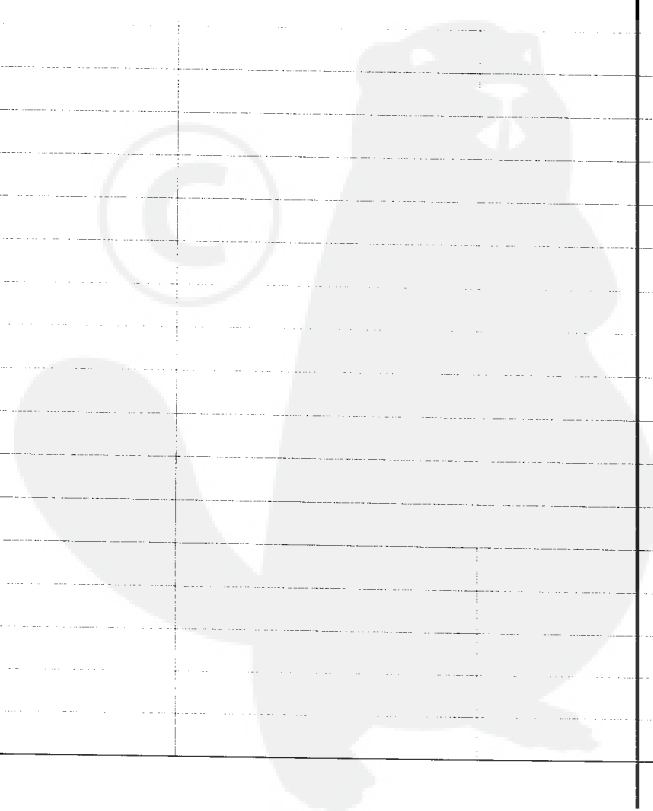
Group:Trimmers/Brushcutters Model:SRM-4000(6digits)(35)(36) Section:Gear Case(Loop Handle Type), Nylon Line Cutting Head(16)

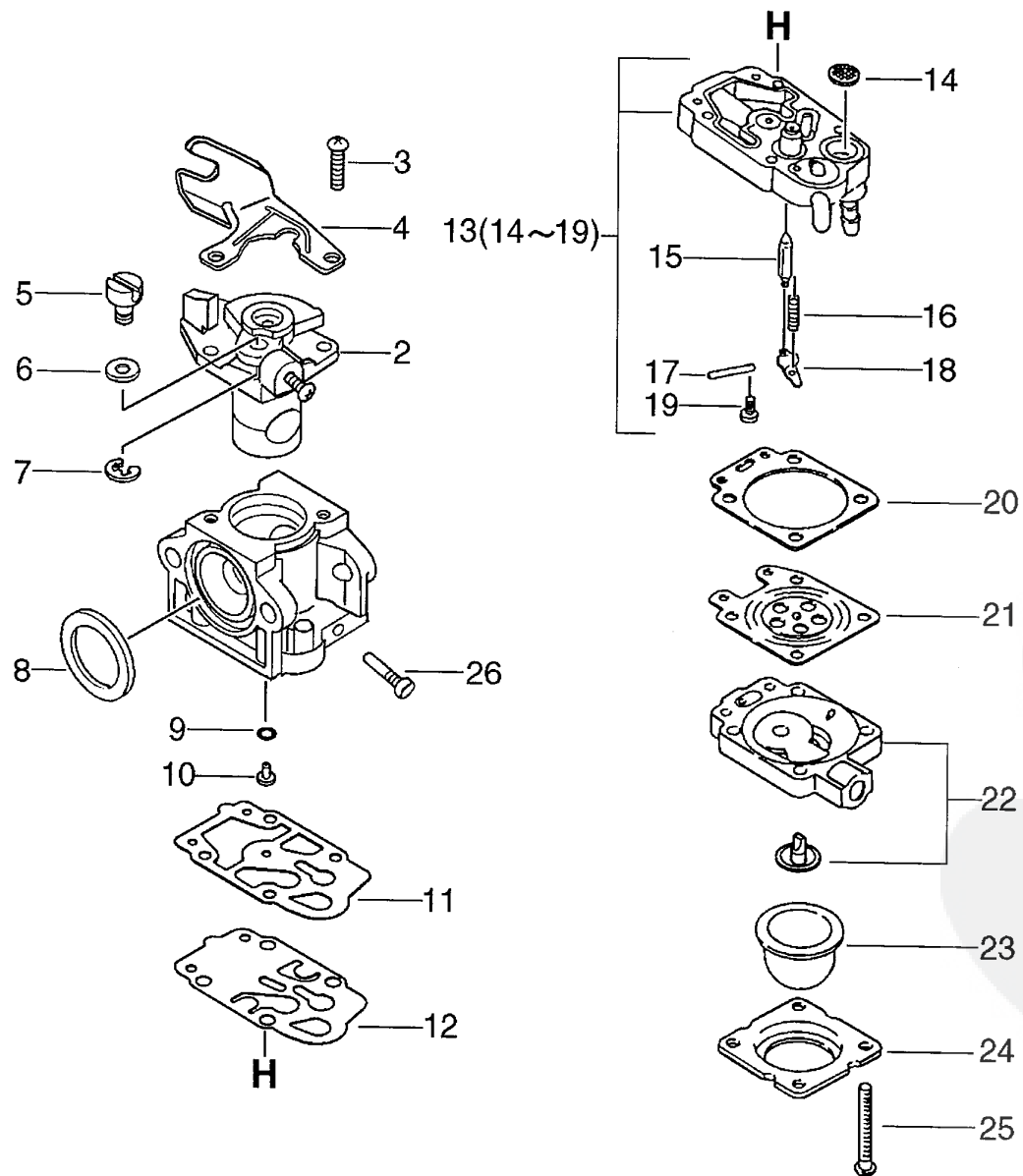
Key	Lv	Part Number	Q'ty	Description	Remarks	Note
3		900720-00012	1	O-RING 12		
4		C535-000000	1	FIXTURE, BLADE	Sus. by C535-000001	
4		C535-000001	1	FIXTURE, BLADE		
5 +		610352-56830	1	PLATE, CUP		
6 +		C535-000010	1	FIXTURE, BLADE	Sus. by C535-000011	
6 +		C535-000011	1	FIXTURE, BLADE		
7		900702-00032	1	CIRCLIP 32		
8		610444-56830	1	WASHER		
9		900812-06201	1	BEARING, BALL 6201		
10		610310-56930	1	SHAFT, P.T.O.	Sus. by 610310-56931	
12		610300-56930	1	GEAR SET		
13		900810-00629	1	BEARING, BALL 629		
15		610473-52131	1	SPRING		
16		900603-50008	1	WASHER		
17		610434-50030	1	BOLT 8* 6	Sus. by 610434-50031	
17		610434-50031	1	BOLT 8* 8		
18		900242-05010	1	SCREW 5*10		
19		900162-06030	1	BOLT, H.S. 6*30	Sus. by 91118-06030	
20		900800-06001	1	BEARING, BALL 6001		
21		900803-06001	1	BEARING, BALL 6001		
22		900702-00028	1	CIRCLIP 28		
23		900701-00012	1	CIRCLIP 12		
40		X047-000070	1	CUTTER, ASM LINE	Sus. by X047-000330	
40		X047-000220	1	CUTTER, ASM LINE	Sus. by X047-000330	
41 +		V332-000000	1	WASHER, CIRCULAR 24		
42 +		P022-000710	2	EYELET		
43 +		X470-000000	1	DRUM, REEL	Sus. by P022-005040	
43 +		P022-005040	1	HOUSING		

Parts List

Group:Trimmers/Brushcutters Model:SRM-4000(6digits)(35)(36) Section:Gear Case(Loop Handle Type), Nylon Line Cutting Head(16)

Key	Lv	Part Number	Q'ty	Description	Remarks	Note
44	+	P022-001160	1	NUT		
45	+	P022-001200	1	SPRING		
46	+	P022-001310	1	TAP KNOB	Sus. by P022-019450	
46	+	P022-019450	1	TAP KNOB		
47	+	P022-001180	1	BOBBIN		
48	+	P022-000730	1	NYLON CODE	Sus. by P022-006200	
48	+	P022-006200	1	NYLON CODE		
49	+	P022-001190	1	COVER	Sus. by P022-005030	
49	+	P022-005030	1	COVER		



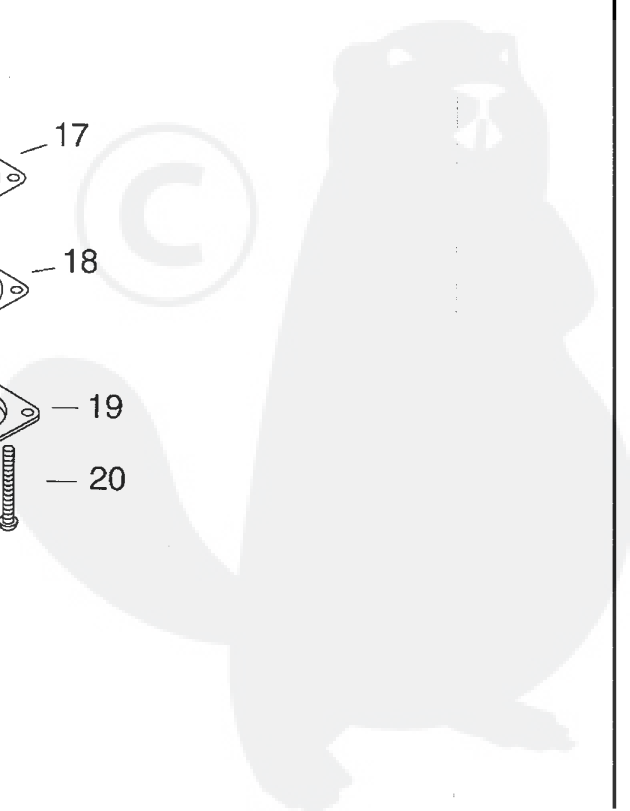
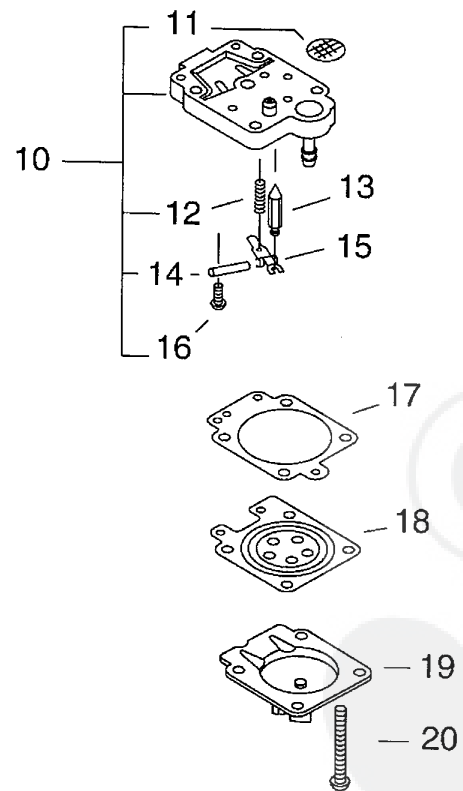
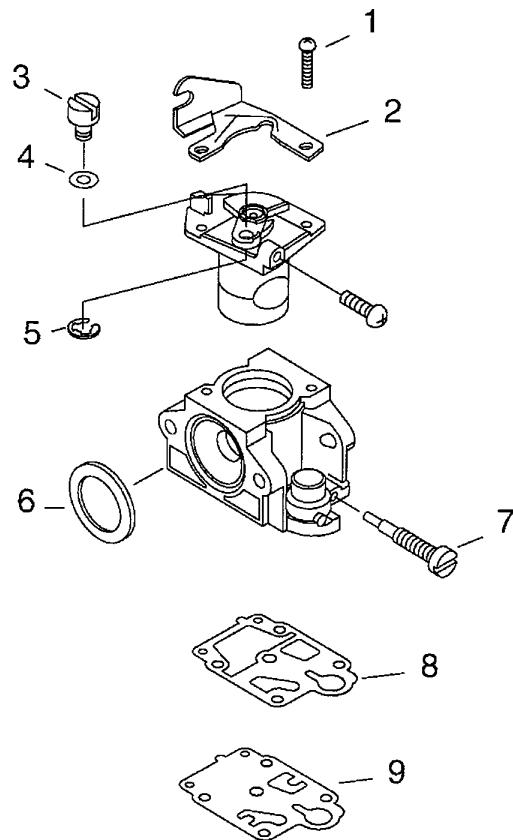


P a r t s L i s t

Date:25/10/2010 Page: 1

Group:Trimmers/Brushcutters Model:SRM-4000(6digits)(35)(36) Section:Carburetor(Sr/Nr 36007730 and before) (17)

Key	Lv	Part Number	Q'ty	Description	Remarks	Note
		A021-000280	1	CARBURETOR, DIAPHRAGM	Sus. by A021-001050	
		A021-000281	1	CARBURETOR, DIAPHRAGM	Sus. by A021-001050	
		A021-000282	1	CARBURETOR, DIAPHRAGM	Sus. by A021-001050	
		A021-001050	1	CARBURETOR, DIAPHRAGM		
9		A021-001170	1	CARBURETOR, DIAPHRAGM	Sus. by A021-001171	
3	+	123114-40630	2	SCREW		
4	+	P003-000180	1	BRACKET CABLE		
5	+	123172-45130	1	SWIVEL		
6	+	123149-54230	1	WASHER		
7	+	123173-07930	1	CLIP		
8	+	123143-12110	1	RING, PACKING		
9	+	123183-40630	1	O-RING		
10	+	P003-000490	1	JET	Sr/Nr 001535 to 36002230	
10	+	P003-000530	1	JET	Sr/Nr 001536 to 36002230	
11	+	123125-40630	1	GASKET, PUMP		
12	+	123112-40630	1	DIAPHRAGM, PUMP		
13	+	P003-000510	1	BODY ASSEMBLY, PUMP		
14	++	123126-10631	1	SCREEN, INLET		
15	++	123137-19830	1	VALVE, INLET NEEDLE		
16	++	123122-05560	1	SPRING, METER. LEVER		
17	++	123138-03930	1	PIN, METERING LEVER		
18	++	123123-03930	1	LEVER, METERING		
19	++	123139-05560	1	SCREW, M. LEVER PIN		
20	+	123140-05560	1	GASKET, M. DIAPHRAGM		
21	+	123141-03930	1	DIAPHRAGM, METERING	Sr/Nr 001535 and before	
21	+	P003-000090	1	METERING, DIAPHRAGM	Sr/Nr 001536 and after	
22	+	123180-05560	1	BODY, AIR PURGE		
23	+	123181-40630	1	PUMP, PRIMER		



P a r t s L i s t

Group:Trimmers/Brushcutters Model:SRM-4000(6digits)(35)(36) Section:Carburetor(Sr/Nr 36007731 and after)(18)

Key	Lv	Part Number	Q'ty	Description	Remarks	Note
		A021-001170	1	CARBURETOR, DIAPHRAGM		
1	+	123114-40630	2	SCREW		
2	+	P003-000180	1	BRACKET CABLE		
3	+	123172-45130	1	SWIVEL		
4	+	123149-54230	1	WASHER		
5	+	123173-07930	1	CLIP		
6	+	123143-12110	1	RING, PACKING		
7	+	P003-001130	1	NEEDLE, HIGH SPEED		
8	+	P003-000100	1	GASKET, PUMP		
9	+	123112-40630	1	DIAPHRAGM, PUMP		
10	+	P003-001490	1	BODY ASSEMBLY, PUMP		
11	++	123126-10631	1	SCREEN, INLET		
12	++	123122-05560	1	SPRING, METER. LEVER		
13	++	123137-19830	1	VALVE, INLET NEEDLE		
14	++	123138-03930	1	PIN, METERING LEVER		
15	++	123123-03930	1	LEVER, METERING		
16	++	123139-05560	1	SCREW, M. LEVER PIN		
17	+	123140-27230	1	GASKET, M. DIAPHRAGM		
18	+	P003-000090	1	METERING, DIAPHRAGM		
19	+	P003-001500	1	COVER, PRIMER PUMP		
20	+	123144-44330	4	SCREW		