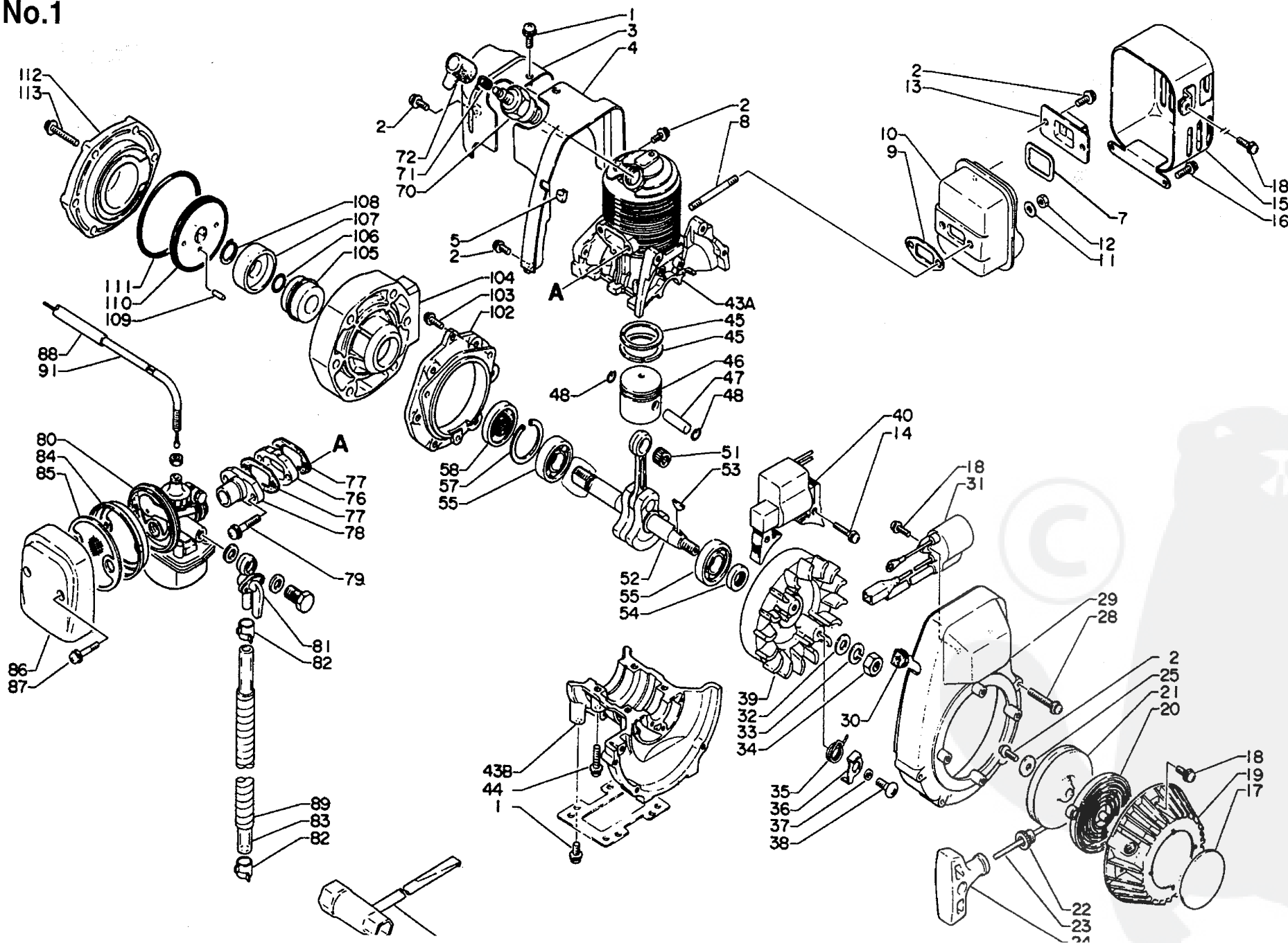


No.1



Parts List

Date:30/06/2010 Page: 1

Group:Power Sprayers Model:SHR-200E Section:Cylinder, Crankcase, Starter, Magneto, Air Cleaner, Muffler(1)

Key	Lv	Part Number	Q'ty	Description	Remarks	Note
1		900242-05010	5	SCREW 5*10		
2		900242-04010	5	SCREW 4*10		
3		101529-10510	1	PLATE, GUIDE (BL)		
4		101514-08020	1	COVER, CYLINDER (BL)		
5		152115-05530	1	BUSHING		
7		145866-10610	1	GASKET, MUFFLER LID		
8		101014-00560	2	STUD, MUFFLER		
9		145510-08021	1	GASKET, MUFFLER		
10		145858-08021	1	MUFFLER		
11		900603-00005	2	WASHER 5		
12		900560-00005	2	NUT, LOCK		
13		145809-10510	1	LID, MUFFLER		
14		900242-04020	2	SCREW 4*20		
15		145621-10510	1	COVER, MUFFLER		
16		900242-04012	2	SCREW 4*12		
17		890112-26730	1	LABEL, ECHO		
18		900242-04014	7	SCREW 4*14		
		177200-08020	1	STARTER ASS'Y		
2 +		900242-04010	1	SCREW 4*10		
19 +		177209-08020	1	CASE, STARTER (BL)		
20 +		177220-06530	1	SPRING, REWIND		
21 +		177215-04920	1	DRUM, STARTER		
22 +		177227-05330	1	GUIDE, ROPE		
23 +		177226-06530	1	ROPE, STARTER		
24 +		177228-06530	1	GRIP, STARTER		
25 +		177214-04630	1	WASHER		
28		900242-04040	4	SCREW 4*40		
29		101511-10510	1	COVER, FAN (BS)		

P a r t s L i s t

Date:30/06/2010 Page: 2

Group:Power Sprayers Model:SHR-200E Section:Cylinder, Crankcase, Starter, Magneto, Air Cleaner, Muffler(1)

Key	Lv	Part Number	Q'ty	Description	Remarks	Note
30		152112-05730	1	BUSHING		
31		156626-08020	1	COIL, IGNITION		
32		900600-00008	1	WASHER 8		
33		900605-00008	1	WASHER, SPRING 8		
34		900500-00008	1	NUT 8		
35		177234-08020	2	SPRING, RETURN		
36		177218-04920	2	PAWL, STARTER		
37		177247-04630	2	SPACER, RATCHET		
38		900216-05014	2	SCREW 5*14		
39		156801-08021	1	FLYWHEEL		
40		156601-08020	1	C.D. IGNITION MODULE		
43		100200-08022	1	CRANKCASE SET W/CYL.		
44		900242-05030	4	SCREW 5*30		
45		100011-05330	2	RING, PISTON		
46		100010-09030	1	PISTON		
47		100013-10210	1	PIN, PISTON		
48		100015-04630	2	CIRCLIP, PISTON PIN		
51		100012-08020	1	BEARING, NEEDLE		
52		100100-10511	1	CRANKSHAFT ASSY		
53		100142-00310	1	KEY, WOODRUFF (M)		
54		100212-04630	1	OILSEAL		
55		900810-36201	2	BEARING, BALL 6201	Sus. by 94035-36201	
55		94035-36201	2	BEARING, BALL		
57		900702-00032	1	CIRCLIP 32		
58		100213-03930	1	OILSEAL	Sus. by 100212-03930	
58		100212-03930	1	OILSEAL		
70		159010-00330	1	PLUG, SPARK (BM-6A)		
71		159011-00510	1	COIL, SPARK PLUG CAP	Sus. by 159911-03432	

P a r t s L i s t

Date:30/06/2010 Page: 3

Group:Power Sprayers Model:SHR-200E Section:Cylinder, Crankcase, Starter, Magneto, Air Cleaner, Muffler(1)

Key	Lv	Part Number	Q'ty	Description	Remarks	Note
71		159011-03432	1	COIL, SPARK PLUG CAP		
72		159012-01620	1	CAP, SPARK PLUG		
76		130017-21230	1	INSULATOR		
77		130010-08421	2	GASKET		
78		130510-21230	1	ADAPTER, INTAKE		
79		900242-05025	2	SCREW 5*25		
80		120000-10512	1	CARBURETOR ASSY		
81		132200-00512	1	VALVE ASS'Y, FUEL		
82		357013-00210	2	CLIP 11	Sus. by 132013-14010	
82		132013-14010	2	BAND		
83		132010-10510	1	PIPE, FUEL		
84		130314-05530	1	CASE, AIR CLEANER		
85		130310-05730	1	FILTER, AIR		
86		130313-05530	1	COVER, AIR CLEANER		
87		900242-04028	2	SCREW 4*28		
88		178127-10510	1	TUBE, COVER		
89		132015-10510	1	COVER, PROTECTIVE		
91		178001-10510	1	WIRE, THROTTLE		
99		895410-03930	1	WRENCH 10*19		
102		100280-10510	1	BRACKET, PUMP		
103		900242-05016	3	SCREW 5*16		
104		405210-10512	1	CASING, PUMP		
105		405100-10511	1	SEAL, MECHANICAL	Sus. by 405100-11010	
105		405100-11010	1	SEAL, MECHANICAL		
106		405111-10510	1	O-RING	Sus. by 900724-30010	
106		900724-30010	1	O-RING		
107		405103-10510	1	PLATE, DRIVE		
109 +		405113-10510	1	PIN		

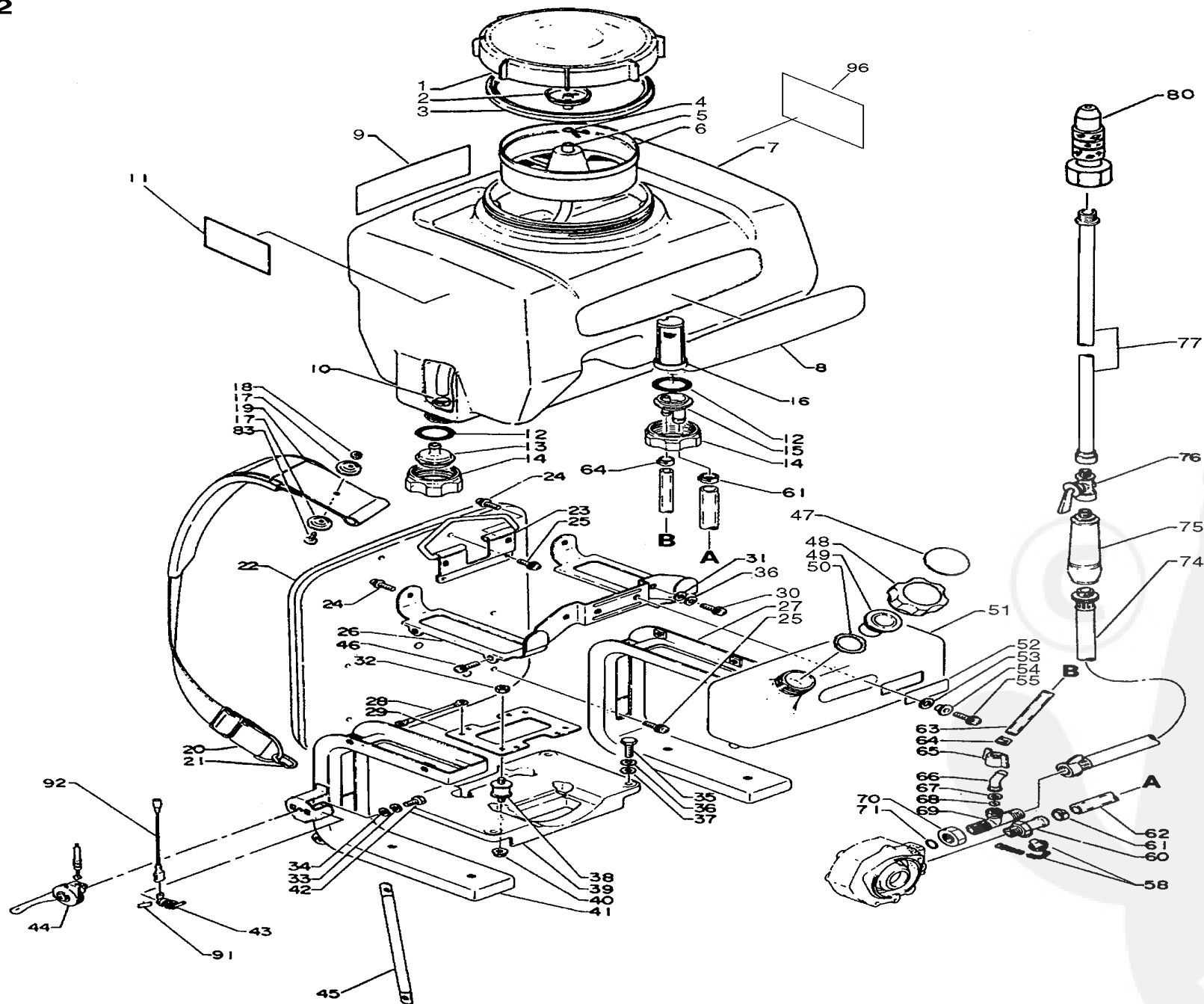
Parts List

Date:30/06/2010 Page: 4

Group:Power Sprayers Model:SHR-200E Section:Cylinder, Crankcase, Starter, Magneto, Air Cleaner, Muffler(1)

Key	Lv	Part Number	Q'ty	Description	Remarks	Note
108		900704-00012	1	CIRCLIP 12		
110		405110-10512	1	IMPELLER		
111		405212-10510	1	O-RING (S-67)	Sus. by 900724-30067	
111		900724-30067	1	O-RING		
112		405211-10511	1	LID, PUMP		
113		900242-05040	6	SCREW 5*40		

No.2



Parts List

Date:30/06/2010 Page: 1

Group:Power Sprayers Model:SHR-200E Section:Fuel Tank, Harness, Chemical Tank(2)

Key	Lv	Part Number	Q'ty	Description	Remarks	Note
1		250001-02310	1	CAP, CHEMICAL TANK		
2	+	250013-00310	1	CAP, INSIDE		
3		250011-01110	1	GASKET, CHMCL. TANK		
4		363023-01110	1	CLIP		
5		253111-10510	1	PIPE, AIR		
6		254210-10510	1	FILTER, CHMCL, TANK		
7		253006-10510	1	TANK, CHEMICAL		
8		890135-10610	1	LABEL, CHEMICAL TANK		
9		890178-10610	1	LABEL, WARNING	Sus. by 890178-10611	
9		890178-10611	1	LABEL, CAUTION		
10		357013-00210	1	CLIP 11	Sus. by 132013-14010	
10		132013-14010	1	BAND		
11		890184-10610	1	LABEL, CAUTION		
12		900720-00028	2	O-RING 28		
13		253110-10510	1	VENT		
14		357015-10511	2	NUT, HOLLOW		
15		357010-10510	1	NIPPLE, OUTLET		
16		356111-10510	1	SCREEN		
17		300328-03210	4	WASHER, HARNESS		
18		900560-00005	2	NUT, LOCK		
19		300322-03210	2	PAD, KNAPSACK HARNESS	Sus. by 300322-13210	
19		300322-13210	2	PAD, KNAPSACK HARNESS		
20		300301-01810	2	HARNESS, KNAPSACK		
21		300319-01611	2	RING		
22		300105-10510	1	PAD, KNAPSACK		
23		300610-10511	1	HANGER		
24		900242-06010	4	SCREW 6*10		
25		900242-05010	6	SCREW 5*10		

P a r t s L i s t

Date:30/06/2010 Page: 2

Group:Power Sprayers Model:SHR-200E Section:Fuel Tank, Harness, Chemical Tank(2)

Key	Lv	Part Number	Q'ty	Description	Remarks	Note
26		253905-10511	1	BRACKET		
27		300005-10512	1	FRAME, KNAPSACK (BS)		
28		162010-10510	1	LEAD, GROUND		
29		104914-10510	1	BRACKET, CUSHION		
30		900220-06010	2	SCREW 6*10		
31		900600-00006	2	WASHER 6		
32		900515-00005	4	NUT, FLANGE 5		
33		900605-00005	1	WASHER, SPRING 5		
34		900600-00005	1	WASHER 5		
35		900100-06020	4	BOLT 6*20		
36		900605-00006	6	WASHER, SPRING 6		
37		900603-00006	4	WASHER 6		
38		104905-07230	4	CUSHION		
39		104930-10510	1	SUPPORTER		
40		900515-00005	4	NUT, FLANGE 5		
41		300006-10611	1	FRAME, KNAPSACK (BS)		
42		900100-05012	1	BOLT 5*12		
43		166101-10510	1	SWITCH		
44		178000-00660	1	CONTROL, THROTTLE	Sus. by 178000-12710	
44		178000-12710	1	LEVER, CONTROL		
45		300029-10610	2	STAY, FRAME (BS)		
46		900242-06014	6	SCREW 6*14		
		131604-07132	1	CAP ASSY, FUEL TANK	Sus. by 131004-06210	
		131004-06210	1	CAP ASSY, FUEL		
47 +		890154-12730	1	LABEL, FUEL MIX	Can be used on the 131604-07132 only	
48 +		131017-05330	1	CAP, FUEL TANK	Can be used on the 131604-07132 only	
48 +		131017-06610	1	CAP, FUEL TANK	Can be used on the 131604-06210 only	
49 +		131003-05330	1	CUP SET, VENT		

Parts List

Date:30/06/2010 Page: 3

Group:Power Sprayers Model:SHR-200E Section:Fuel Tank, Harness, Chemical Tank(2)

Key	Lv	Part Number	Q'ty	Description	Remarks	Note
50 +		131016-21230	1	GASKET, FUEL CAP	Can be used on the 131604-07132 only	
50 +		131016-21060	1	GASKET, FUEL CAP	Can be used on the 131604-06210 only	
51		131010-10510	1	FUEL TANK		
52		890112-10610	1	LABEL, MODEL		
53		131925-02310	2	CUSHION		
54		131916-02310	2	SPACER, FUEL TANK		
55		900242-06020	2	SCREW 6*20		
58		382004-10510	1	PLUG, DRAIN		
60		382015-10510	1	JOINT, INLET		
61		357023-01110	2	CLIP 13	Sus. by V495-000310	
61		V495-000310	2	BAND		
62		382012-10510	1	PIPE, INLET		
63		386000-10510	1	PIPE W/CLIP		
64		386020-10510	2	CLIP, TUBE	Sus. by 386020-10511	
64		386020-10511	2	CLIP (10MM)		
65		386015-10510	1	NUT, WING		
66		386012-10511	1	NIPPLE		
67		386019-10510	1	GASKET,BYPASS NOZZLE		
68		386018-10510	1	NOZZLE, BYPASS		
69		384013-10512	1	NIPPLE		
70		384029-10510	1	NUT		
71		900722-00010	1	O-RING 10A	Sus. by 900722-00100	
71		900722-00100	1	O-RING P-10A		
74		384000-10510	1	HOSE ASS'Y, SPRAY		
75		224110-10510	1	GRIP	Sus. by E271-000000	
75		224110-12710	1	GRIP, NOZZLE	Sus. by E271-000000	
75		E271-000000	1	GRIP, NOZZLE		
76		224400-10510	1	VALVE, NOZZLE	Sus. by E245-000050	

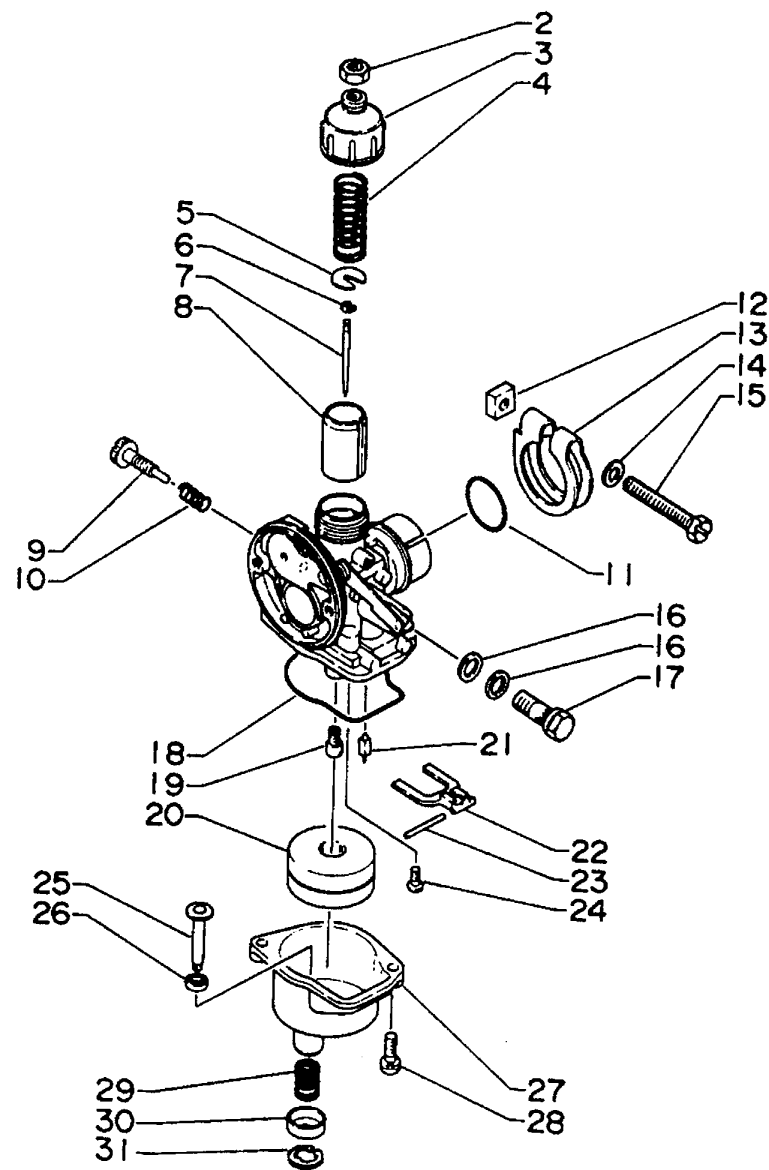
Parts List

Date:30/06/2010 Page: 4

Group:Power Sprayers Model:SHR-200E Section:Fuel Tank, Harness, Chemical Tank(2)

[illegible]

No.3



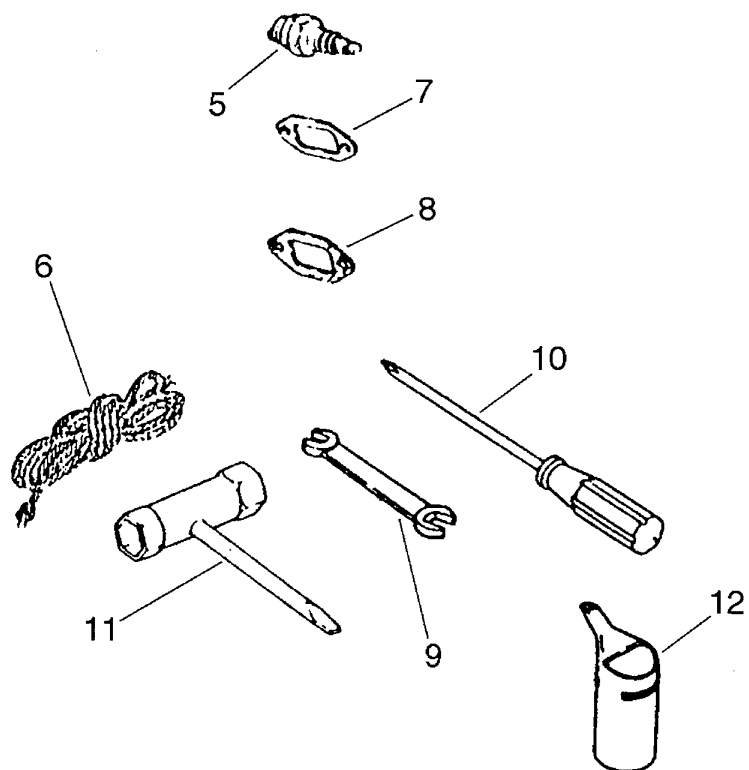
Parts List

Date:30/06/2010 Page: 1

Group:Power Sprayers Model:SHR-200E Section:Carburetor(3)

Key	Lv	Part Number	Q'ty	Description	Remarks	Note
		120000-10512	1	CARBURETOR ASSY		
2	+	120111-04730	1	NUT		
3	+	120113-10211	1	COVER, TOP		
4	+	120114-01820	1	SPRING, THROTTLE		
5	+	120115-08020	1	SEAT, SPRING		
6	+	120116-10211	1	E-RING		
7	+	120103-08021	1	NEEDLE, JET W/CLIP		
8	+	120118-05731	1	VALVE, THROTTLE		
9	+	120159-04731	1	SCREW, IDLE SPEED		
10	+	120160-01321	1	SPRING		
11	+	120149-05730	1	GASKET		
12	+	120151-10210	1	NUT, OUTLET CLIP		
13	+	120146-10210	1	CLIP, OUTLET		
14	+	900600-00005	1	WASHER 5		
15	+	120147-08020	1	BOLT		
16	+	120130-10210	2	GASKET		
17	+	120131-00120	1	BOLT, BANJO		
18	+	120123-10210	1	GASKET, F. CHAMBER		
19	+	120122-08020	1	JET, MAIN		
20	+	120133-05730	1	FLOAT		
21	+	120102-05731	1	FLOAT VALVE ASSY		
22	+	120121-10210	1	ARM, FLOAT		
23	+	120132-10211	1	PIN, FLOAT ARM		
24	+	900220-04006	1	SCREW 4*6		
25	+	120177-03311	1	SHAFT, LINK		
26	+	120178-03311	1	O-RING		
27	+	120124-03311	1	CHAMBER, FLOAT		
28	+	900242-04012	2	SCREW 4*12		

No.4



P a r t s L i s t

Date:30/06/2010 Page: 1

Group:Power Sprayers Model:SHR-200E Section:Tools(4)

Key	Lv	Part Number	Q'ty	Description	Remarks	Note
5		159010-00330	1	PLUG, SPARK (BM-6A)		
6		177226-06530	1	ROPE, STARTER		
7		145510-08021	2	GASKET, MUFFLER		
8		130010-08421	1	GASKET		
9		895123-03830	1	SPANNER 10*13		
10		895710-00430	1	DRIVER, SCREW		
11		895410-03930	1	WRENCH, W/S. DRIVER		
12		898520-17130	1	MIXER, FUEL		