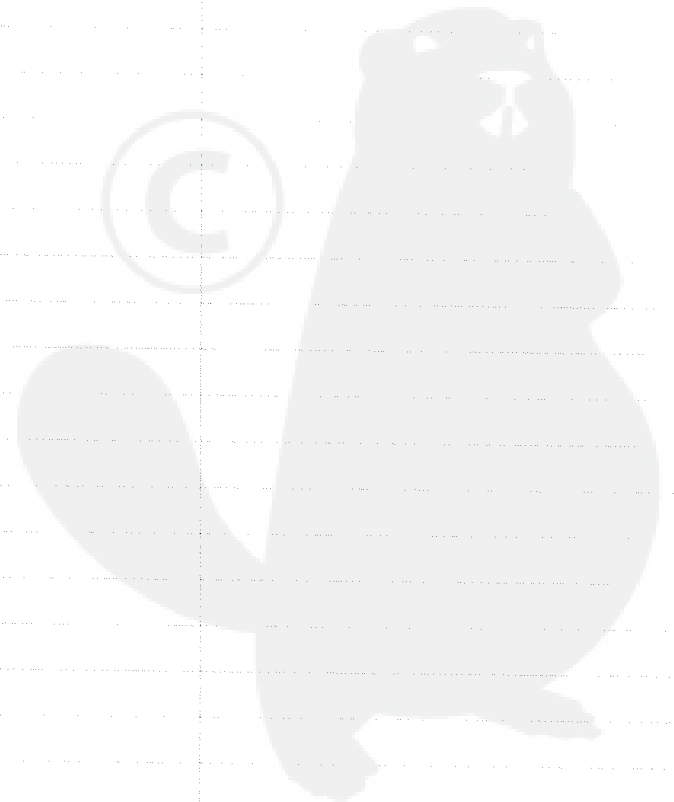




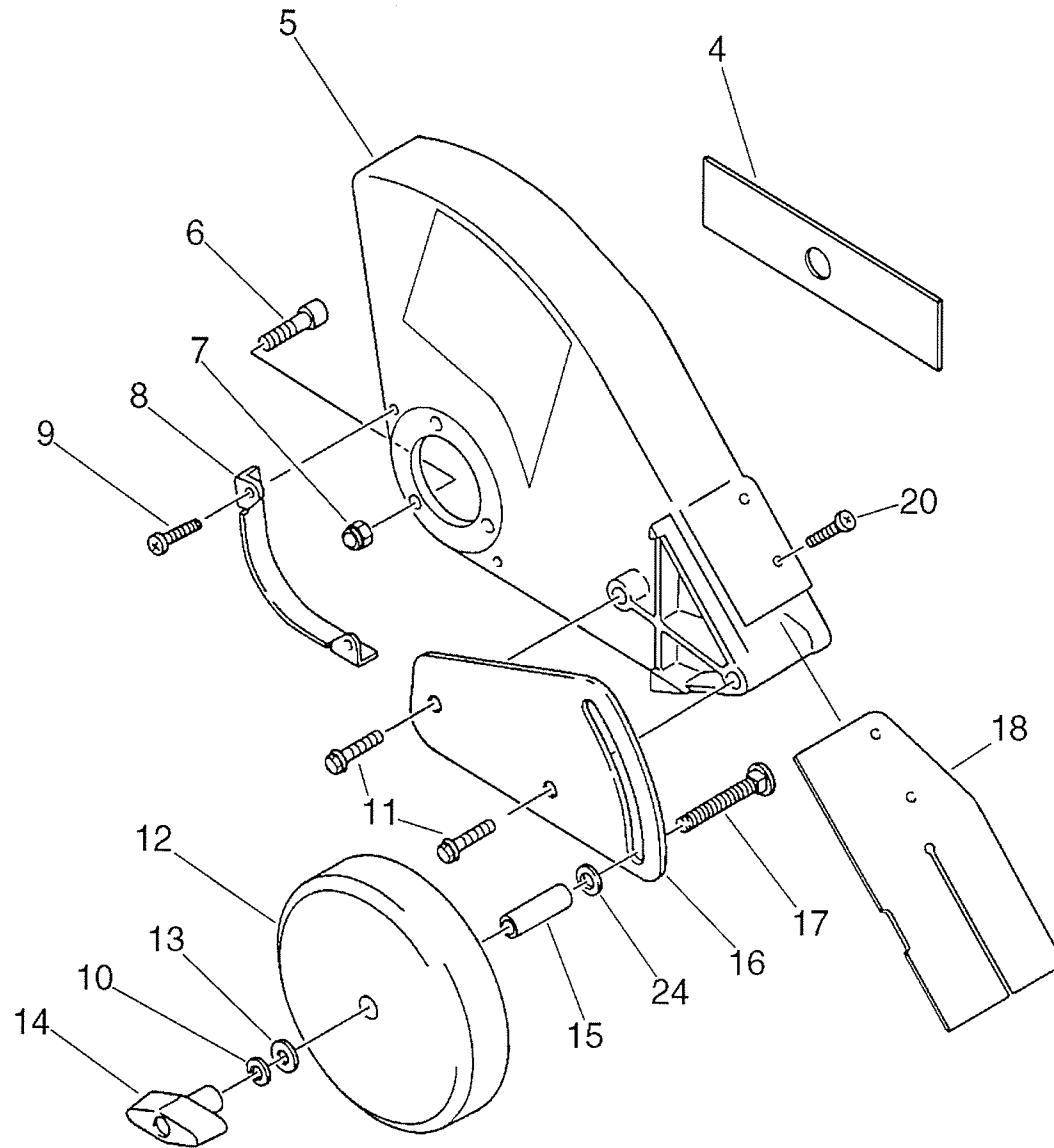
# P a r t s L i s t

Group:Pro Attachment Series Attachments Model:SBE-SRM(PAS-Edger) Section:Main Pipe, Gear Case( 1)

Key	Lv	Part Number	Q'ty	Description	Remarks	Note
1		890617-55630	1	LABEL, CAUTION	Sus. by 890160-25560	
1		890160-25560	1	LABEL, CAUTION		
2		C506-000000	1	SHAFT, FLEXIBLE	Sus. by C506-000001	
2		C506-000001	1	SHAFT, FLEXIBLE	Sus. by C506-000002	
3		610206-46130	1	HOUSING ASY, D.SHFT		
4 +		610246-44730	2	STOPPER		
5 +		610217-52630	1	LINER, FLEXIBLE		
8		610402-52631	1	CASE ASY, GEAR	Sus. by 610402-52633	
8		610402-52632	1	CASE ASY, GEAR	Sus. by 610402-52633	
8		610402-52633	1	CASE ASY, GEAR		
9 +		900706-00012	1	CIRCLIP 12		
10 +		900702-00022	1	CIRCLIP 22		
11 +		900858-06900	1	BEARING, BALL 6900Z		
12 +		900855-06900	1	BEARING, BALL 6900		
13 +		610300-52630	1	GEAR SET		
14 +		900600-00005	2	WASHER 5		
15 +		900100-05030	2	BOLT 5*30		
16 +		610434-50030	1	BOLT 8* 6	Sus. by 610434-50031	
16 +		610434-50031	1	BOLT 8* 8		
17 +		900242-05010	1	SCREW 5*10		
21 +		900800-00609	1	BEARING, BALL 609		
22 +		900706-00010	1	CIRCLIP 10		
23 +		610360-08931	1	SHAFT, P.T.O.		
24 +		900810-06201	1	BEARING, BALL 6201		
25 +		610315-07130	1	SPACER		
26 +		610413-07130	1	OILSEAL		
27 +		900702-00032	1	CIRCLIP 32		
28 +		610313-07130	1	PLATE, ADAPTER (U)	Sus. by 610313-07131	







# P a r t s L i s t

Group:Pro Attachment Series Attachments Model:SBE-SRM(PAS-Edger) Section:Shield, Wheel, Blade( 2)

Key	Lv	Part Number	Q'ty	Description	Remarks	Note
4		696015-52632	1	2-CUTTER BLADE QTY-2		
5		699010-52630	1	SHIELD, BLADE		
6		900162-05022	3	BOLT, H.S. 5*22		
7		900562-50005	3	LOCKNUT 5		
8		699025-52630	1	PLATE, PROTECTION		
9		900080-00300	2	SCREW, 4*16		
10		900605-00008	1	WASHER, SPRING 8		
11		900080-00100	2	SCREW, 8		
12		302410-52631	1	WHEEL 6*1.5	Sus. by C730-000030	
12		C730-000030	1	WHEEL		
13		900602-00008	1	WASHER 8		
14		178113-55330	1	NUT, WING		
15		302424-52630	1	COLLAR, 12		
16		302029-55330	1	BRACKET, WHEEL	Sus. by 302029-55332	
16		302029-55331	1	BRACKET, WHEEL	Sus. by 302029-55332	
16		302029-55332	1	BRACKET, WHEEL		
17		610250-55330	1	BOLT		
18		699017-55330	1	SHIELD, BLADE		
20		900080-00200	2	SCREW, 4*20		
24		900602-00010	1	WASHER 10(10.5*21*2)		

