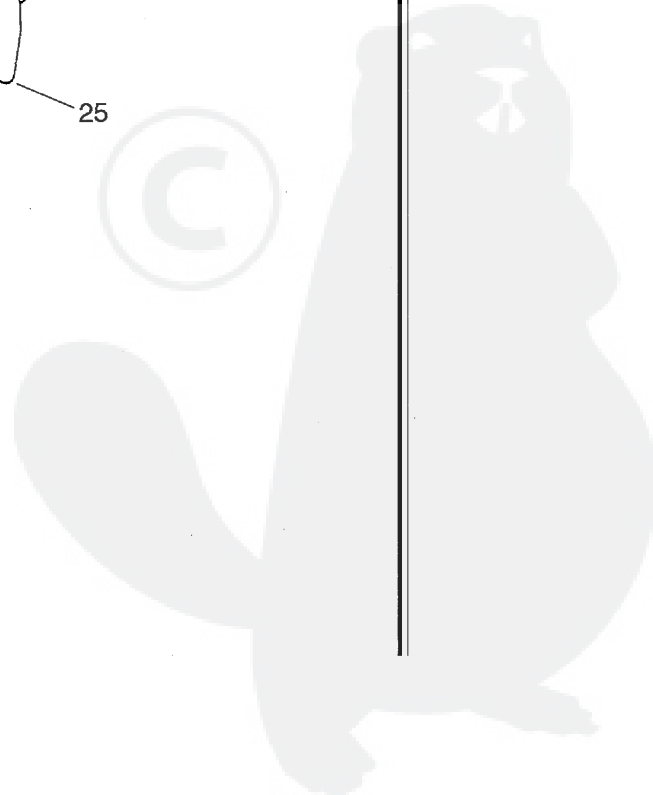
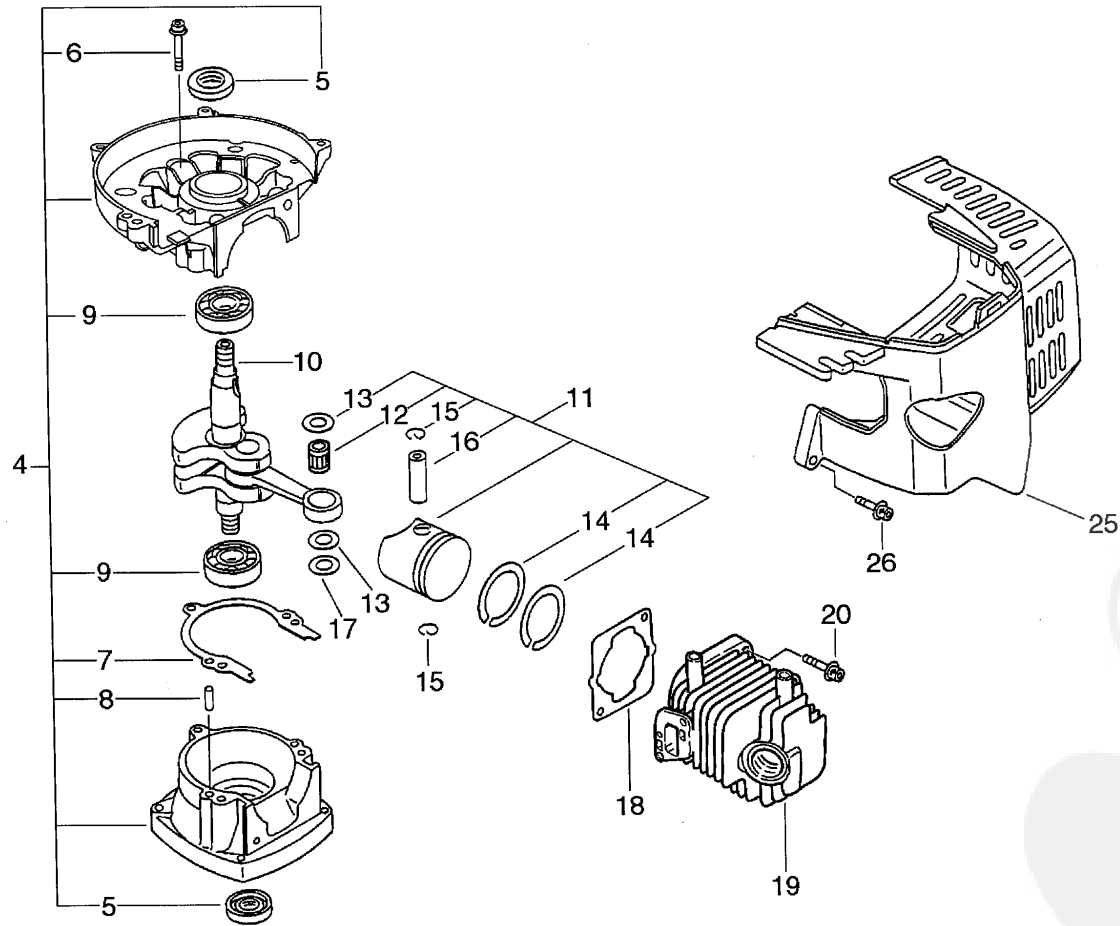


Group:Hedge Trimmers Model:HC-1600(6digits)(35)(36) Section:Cylinder, Crankcase, Piston(Sr/Nr 36008140 and before) ( 1)



**Parts List**

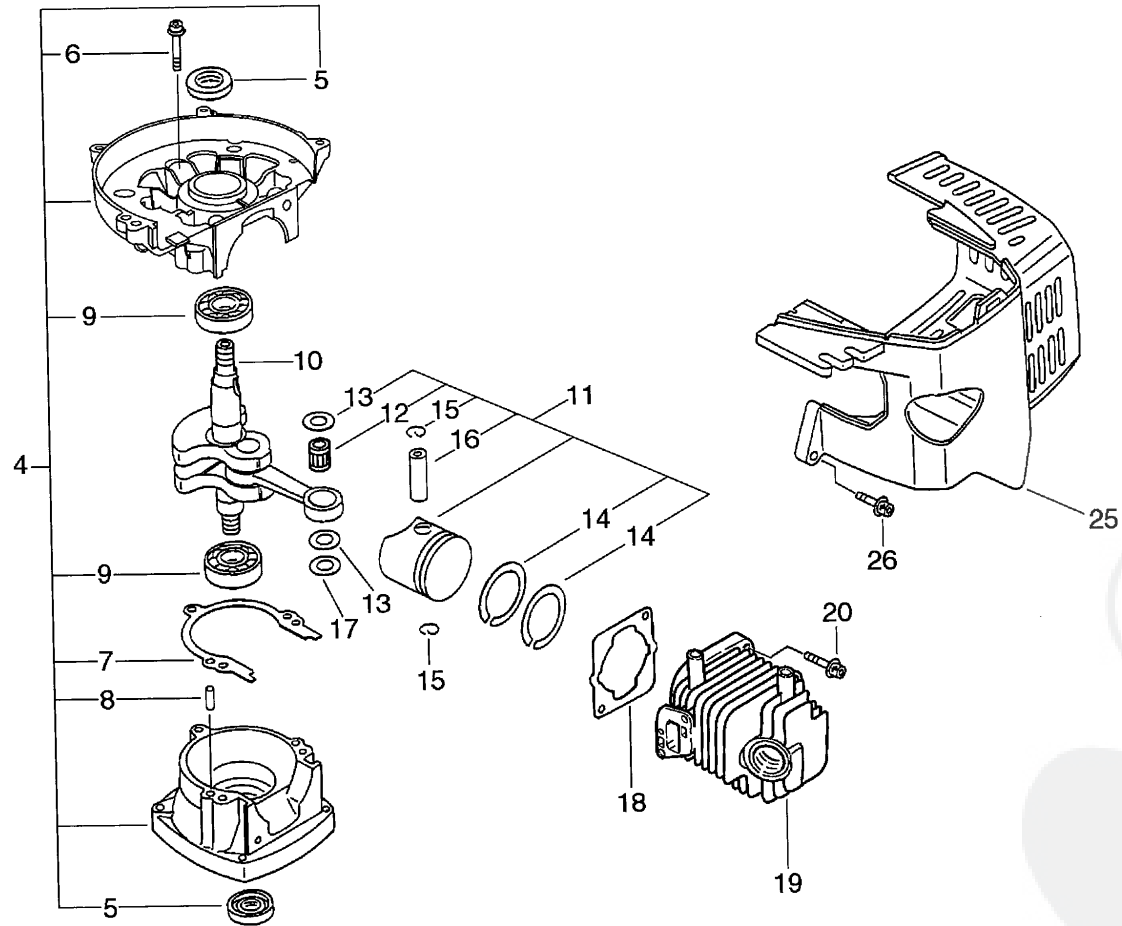
Date:24-8-2011 Page: 1

Group:Hedge Trimmers Model:HC-1600(6digits)(35)(36) Section:Cylinder, Crankcase, Piston(Sr/Nr 36008140 and before)( 1)

Key	Lv	Part Number	Q'ty	Description	Remarks	Note
4		100204-51030	1	CRANKCASE KIT	Sus. by 100204-52132	
4		100204-52130	1	CRANKCASE KIT	Sus. by 100204-52132	
4		100204-52131	1	CRANKCASE KIT	Sus. by 100204-52132	
4		100204-52132	1	CRANKCASE KIT		
5 +		100212-42030	2	OILSEAL	Sus. by 100212-42031	
5 +		100212-42031	2	OILSEAL		
6 +		900162-35028	3	BOLT, H.S. 5*28		
7 +		100242-42030	1	GASKET, CRANKCASE		
8 +		100215-03930	2	PIN, DOWEL		
9 +		900810-36201	2	BEARING, BALL 6201	Sus. by 94035-36201	
9 +		94035-36201	2	BEARING, BALL		
10		100100-05962	1	CRANKSHAFT ASSY	Sr/Nr 028000 to 047406	
10		100100-07760	1	CRANKSHAFT ASSY	Sus. by 100100-09760	
10		100100-09760	1	CRANKSHAFT ASSY	Sr/Nr 047407 to 068067	
10		A011-000010	1	CRANKSHAFT,ASM	Sus. by A011-000014	
10		A011-000011	1	CRANKSHAFT,ASM	Sus. by A011-000014	
10		A011-000012	1	CRANKSHAFT,ASM	Sus. by A011-000014	
10		A011-000013	1	CRANKSHAFT,ASM	Sus. by A011-000014	
10		A011-000014	1	CRANKSHAFT,ASM	Sr/Nr 068068 and after	
11		100000-11520	1	PISTON KIT	Sr/Nr 028000 to 047406	
11		100000-07760	1	PISTON KIT	Sus. by 100000-06962	
11		100000-06961	1	PISTON KIT	Sus. by 100000-06962	
11		100000-06962	1	PISTON KIT	Sr/Nr 047407 to 068067	
11		P021-C00400	1	PISTON KIT	Sus. by P021-001113	
11		P021-001110	1	PISTON KIT	Sus. by P021-001113	
11		P021-001111	1	PISTON KIT	Sus. by P021-001113	
11		P021-001112	1	PISTON KIT	Sus. by P021-001113	
11		P021-001113	1	PISTON KIT	Sr/Nr 068068 and after	



Group:Hedge Trimmers Model:HC-1600(6digits)(35)(36) Section:Cylinder, Crankcase, Piston(Sr/Nr 36008141 and after)( 2)

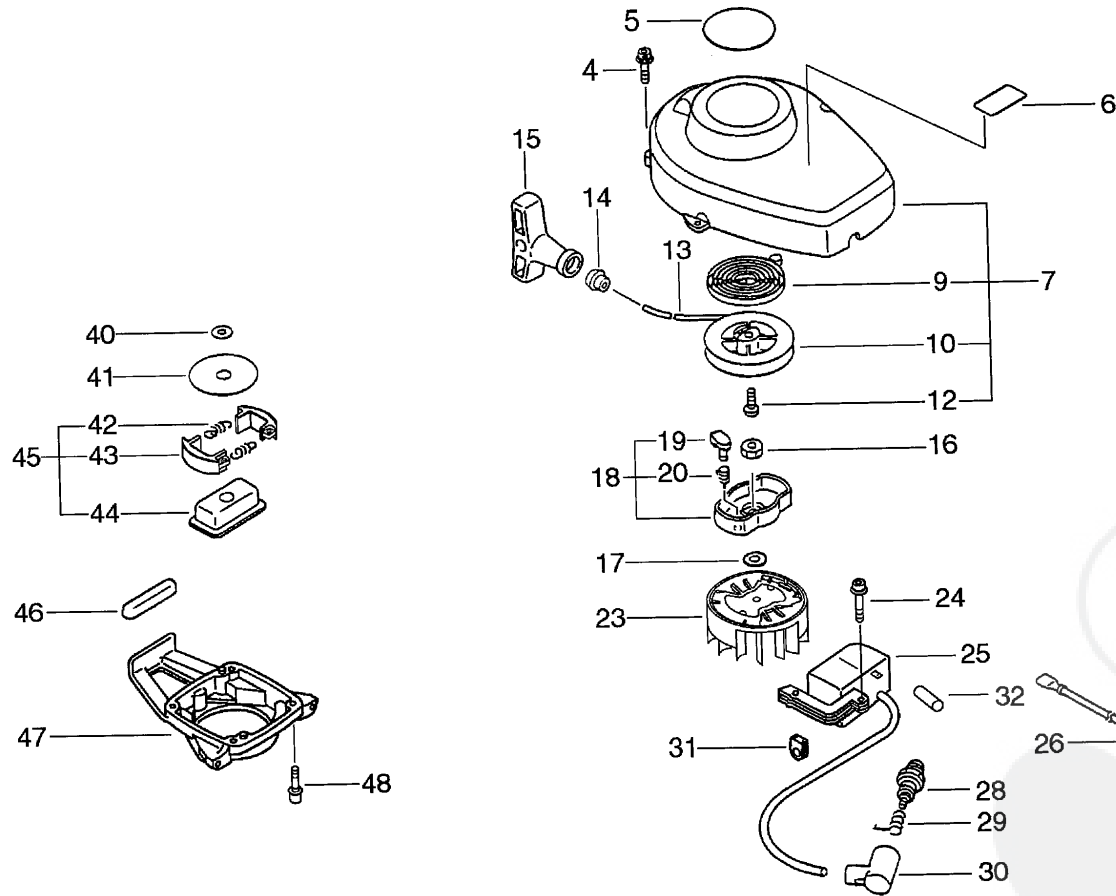




Group:Hedge Trimmers

Model:HC-1600(6digits) (35) (36)

Section:Starter, Magneto, Clutch(Sr/Nr 36008140 and before) ( 3)



**Parts List**

Date:24-8-2011 Page: 1

Group:Hedge Trimmers Model:HC-1600(6digits)(35)(36) Section:Starter, Magneto, Clutch(Sr/Nr 36008140 and before)( 3)

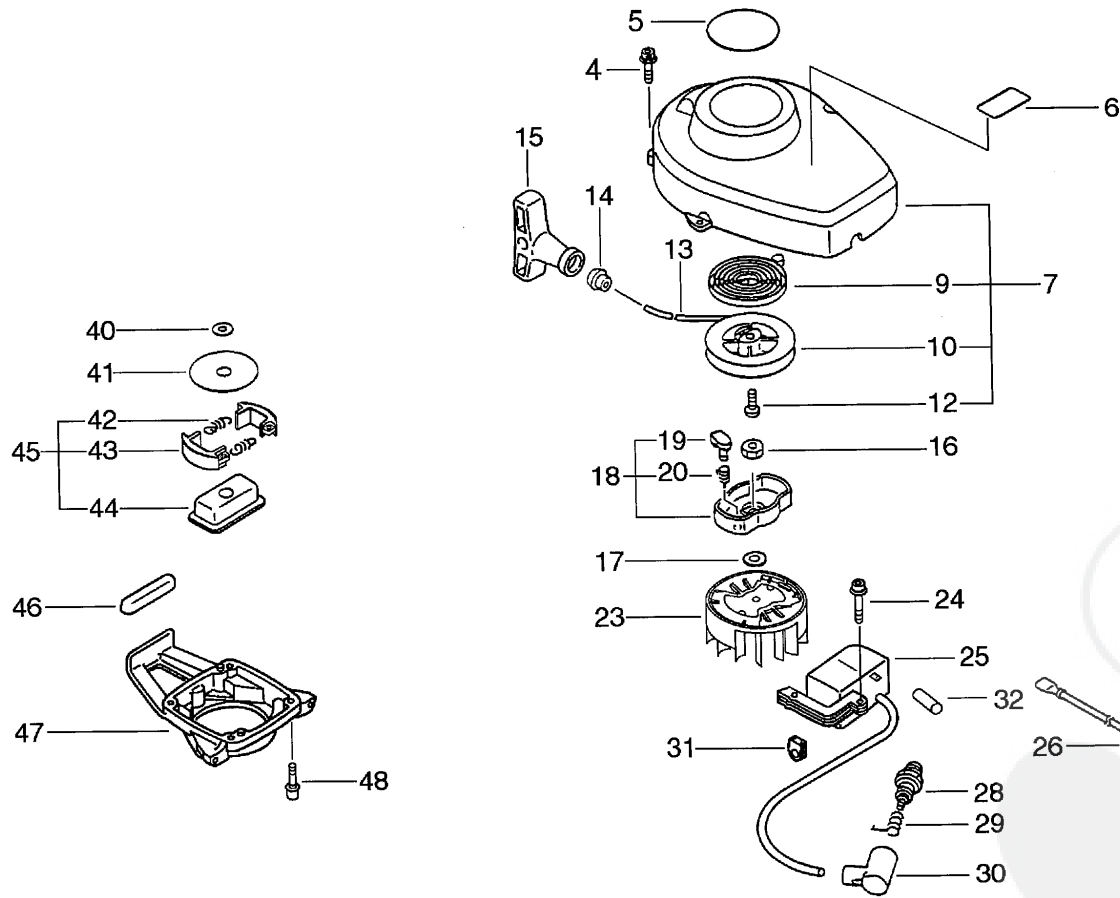
Key	Lv	Part Number	Q'ty	Description	Remarks	Note
4		900238-34016	4	SCREW 4*16	Sus. by 900162-04016	
4		900162-34016	4	BOLT, H.S. 4*16	Sr/Nr 35501001 and after	
4		900163-04016	4	BOLT HSH	Sr/Nr 35501000 and before	
5		890118-49130	1	LABEL, ECHO	Sus. by 890115-06962	
5		890115-06961	1	LABEL, MODEL	Sus. by 890115-06962	
5		890115-06962	1	LABEL, MODEL		
6		890630-06960	1	LABEL, MODEL	Sus. by 890617-07660	
6		890617-07660	1	LABEL, CAUTION	Sr/Nr 35501001 and after	
6		890617-12620	1	LABEL, CAUTION	Sr/Nr 35501000 and before	
7		177200-05962	1	STARTER ASSY	Sr/Nr 36008140 and before	
9	+	177220-42030	1	SPRING, REWIND		
10	+	177215-05960	1	DRUM, STARTER		
12	+	177236-44330	1	SCREW		
13	+	177226-05960	1	ROPE, STARTER		
14	+	177227-42030	1	GUIDE, ROPE		
15	+	177228-06530	1	GRIP, STARTER		
16		900512-00008	1	NUT 3N 8 (L-H)		
17		900600-00008	1	WASHER 8		
18		177202-07360	1	PAWL ASSY, STARTER	Sus. by 177202-07361	
18		177202-07361	1	PAWL ASSY, STARTER		
19	+	177218-44330	1	PAWL, STARTER		
20	+	177234-05960	1	SPRING, RETURN	Sus. by P022-007980	
20	+	P022-007980	1	SPRING, RETURN		
23		156801-44730	1	FLYWHEEL	Sus. by 156801-12360	
23		156801-44731	1	FLYWHEEL	Sus. by 156801-12360	
23		156801-09660	1	FLYWHEEL	Sus. by set of 156601-52130 and 156801-12360	
23		156801-12360	1	ROTOR, MAGNETO	Sr/Nr 066766 and before	
23		A409-000000	1	ROTOR, MAGNETO	Sr/Nr 066767 and after	





Group:Hedge Trimmers Model:HC-1600(6digits) (35) (36)

Section:Starter, Magneto, Clutch(Sr/Nr 36008141 and after) ( 4)



**Parts List**

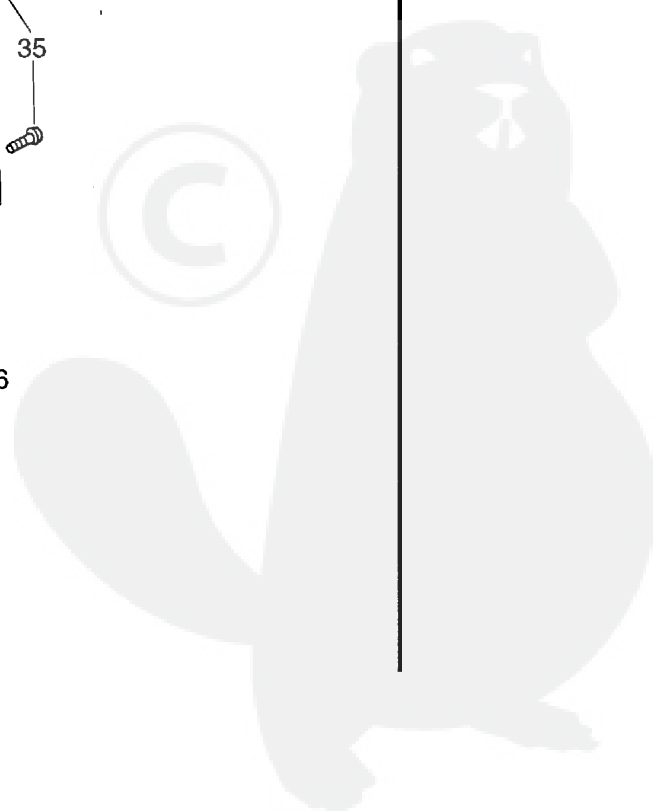
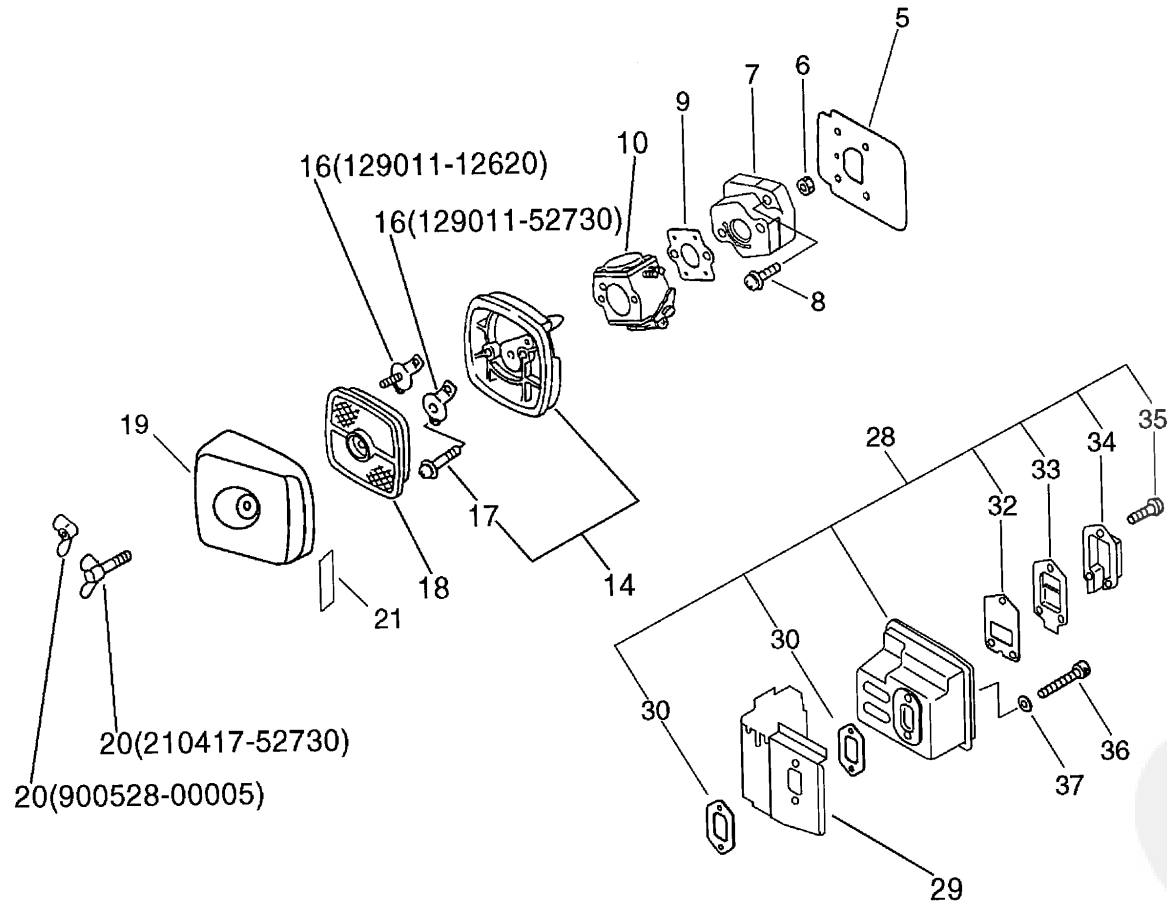
Date:24-8-2011 Page: 1

Group:Hedge Trimmers Model:HC-1600(6digits)(35)(36) Section:Starter, Magneto, Clutch(Sr/Nr 36008141 and after)( 4)

Key	Lv	Part Number	Q'ty	Description	Remarks	Note
4		900162-04016	4	BOLT, H.S. 4*16		
5		890115-06962	1	LABEL, MODEL		
6		890617-07660	1	LABEL, CAUTION		
7		177200-07162	1	STARTER ASSY	Sr/Nr 36008141 and after	
9	+	177220-42030	1	SPRING, REWIND		
10	+	177215-05960	1	DRUM, STARTER		
12	+	177236-44330	1	SCREW		
13	+	177226-05960	1	ROPE, STARTER		
14	+	177227-42030	1	GUIDE, ROPE		
15	+	177228-06530	1	GRIP, STARTER		
16		900512-00008	1	NUT 3N 8 (L-H)		
17		900600-00008	1	WASHER 8		
18		177202-07361	1	PAWL ASM., STARTER		
19	+	177218-44330	1	PAWL, STARTER		
20	+	P022-007980	1	SPRING, RETURN		
23		A409-000000	1	ROTOR,MAGNETO		
24		900162-04022	2	BOLT, H.S. 4*22		
25		156601-52130	1	COIL, IGNITION		
26		162010-52830	1	LEAD, GROUND		
28		159017-10230	1	PLUG, SPARK (RCJ-7Y)		
29		159011-03432	1	COIL, SPARK PLUG		
30		159012-01620	1	CAP, SPARK PLUG		
31		15611C-04920	1	BUSHING		
32		V475-C01900	1	TUBE		
40		175014-05360	1	WASHER, CLUTCH		
41		175019-04920	1	PLATE, CLUTCH		
45		175000-02962	1	CLUTCH ASSY		
42	+	175018-05960	2	SPRING, CLUTCH		



Group:Hedge Trimmers Model:HC-1600(6digits) (35) (36) Section:Air Cleaner, Muffler(Sr/Nr 36008140 and before) ( 5)



**Parts List**

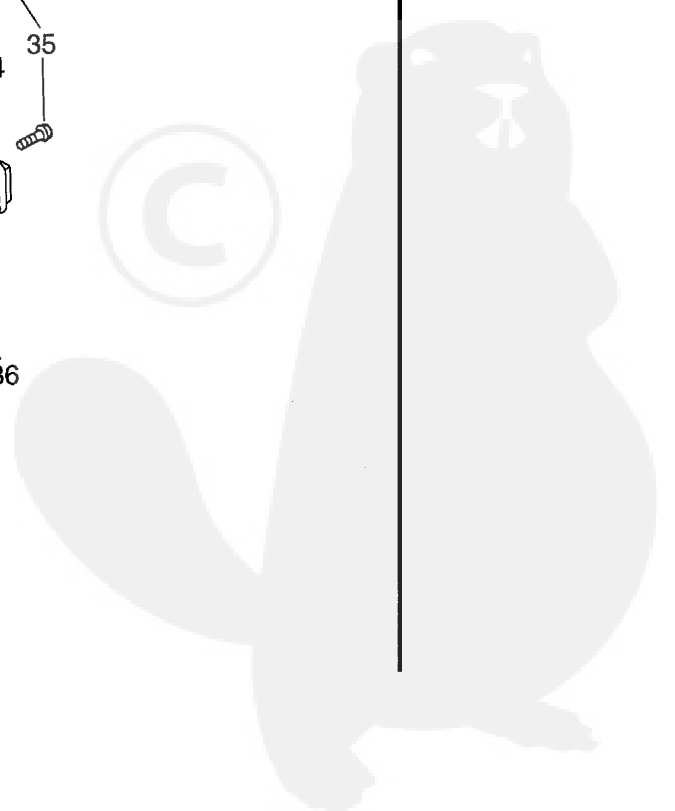
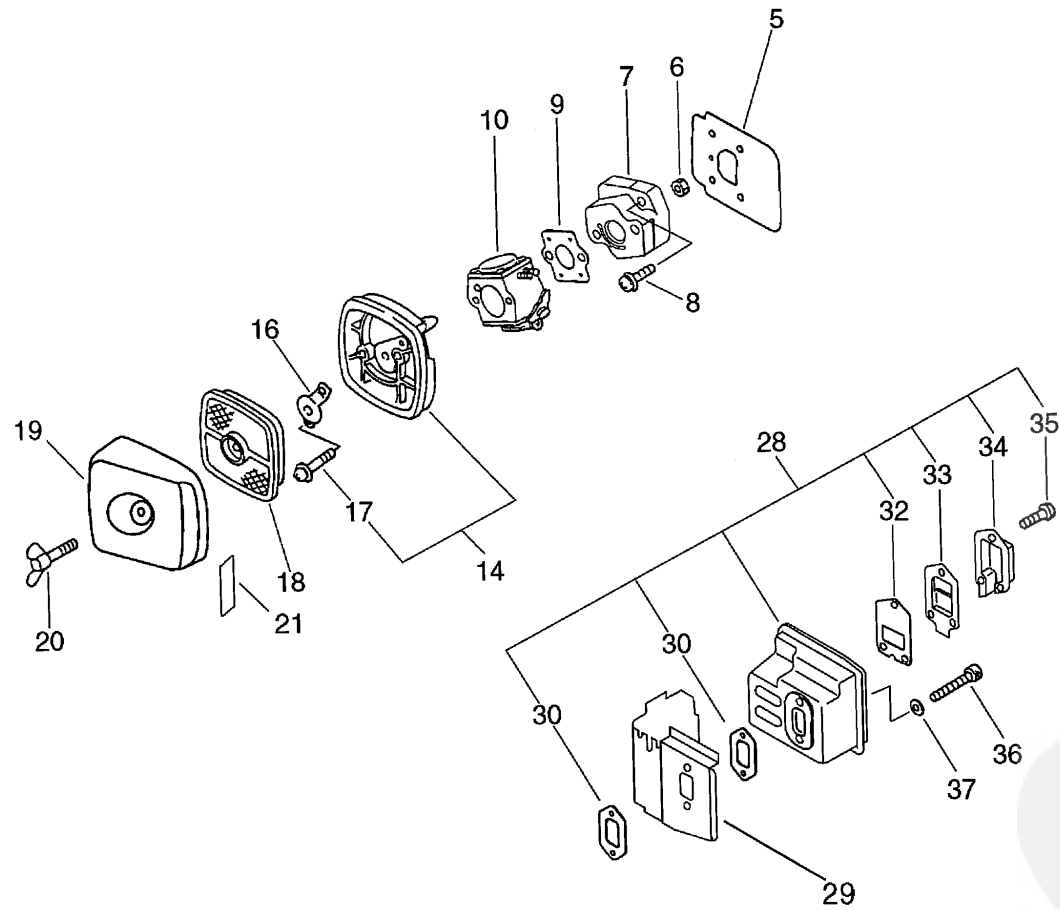
Date:24-8-2011 Page: 1

Group:Hedge Trimmers Model:HC-1600(6digits)(35)(36) Section:Air Cleaner, Muffler(Sr/Nr 36008140 and before) ( 5)

Key	Lv	Part Number	Q'ty	Description	Remarks	Note
5		130010-12032	1	GASKET, INTAKE		
6		900500-00005	2	NUT 5		
7		130017-42031	1	INSULATOR, INTAKE		
8		900238-05020	2	SCREW 5*20		
9		V103-000111	1	GASKET, INTAKE	Sr/Nr 35501000 and before	
9		130016-42031	1	GASKET, INTAKE	Sr/Nr 35501001 and after	
10		125200-07760	1	CARBURETOR ASSY	Sus. by 125200-07761	
10		125200-07761	1	CARBURETOR ASSY	Sr/Nr 028000 to 047406	
10		125200-08460	1	CARBURETOR ASSY	Sus. by 125200-05964	
10		125200-05961	1	CARBURETOR C1U-K51	Sus. by 125200-05964	
10		125200-05962	1	CARBURETOR	Sus. by 125200-05964	
10		125200-05963	1	CARBURETOR	Sus. by 125200-05964	
10		125200-05964	1	CARBURETOR	Sr/Nr 047407 and after	
14		130307-06561	1	CASE, AIR CLEANER	Sus. by P021-002921	
14		P021-002921	1	CASE, AIR CLEANER		
17	+	900242-05065	2	SCREW 5*65		
16		129011-12620	1	PLATE, PREVENT	Sr/Nr 028000 to 046717	
16		129011-52730	1	PLATE, PREVENT	Sr/Nr 046718 and after	
18		130310-54130	1	FILTER, AIR		
19		130313-06561	1	COVER, AIR CLEANER	Sr/Nr 028000 to 046717	
19		130313-06563	1	LID, AIR CLEANER	Sr/Nr 046718 to 36008140	
20		900528-00005	1	NUT	Sr/Nr 028000 to 046717	
20		210417-52730	1	BOLT, WING	Sr/Nr 046718 and after	
21		890121-05360	1	LABEL, METERING		
29		145871-44331	1	COVER, MUFFLER	Sus. by A320-000251	
29		145631-42030	1	COVER, MUFFLER	Sus. by A320-000251	
29		A320-000250	1	COVER, MUFFLER	Sus. by A320-000251	
29		A320-000251	1	COVER, MUFFLER		



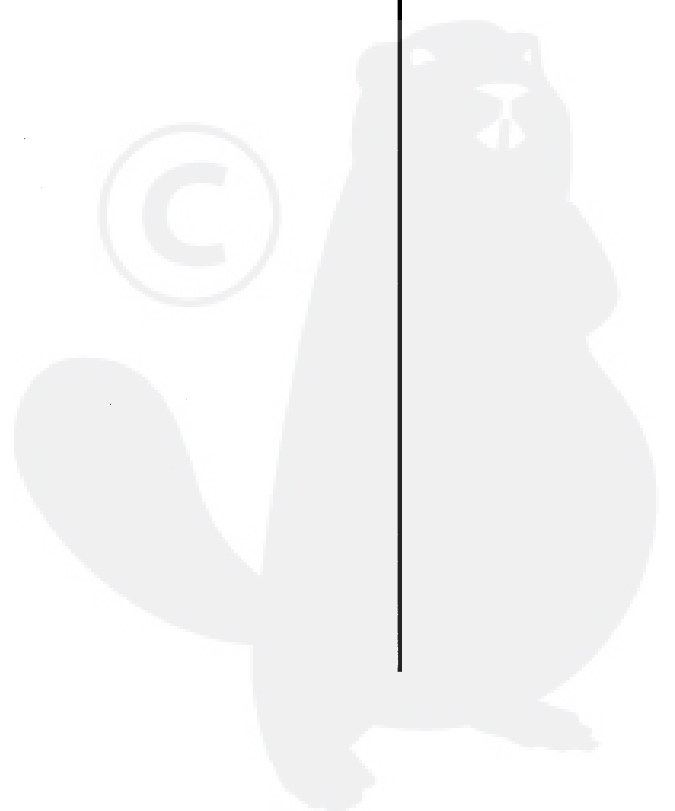
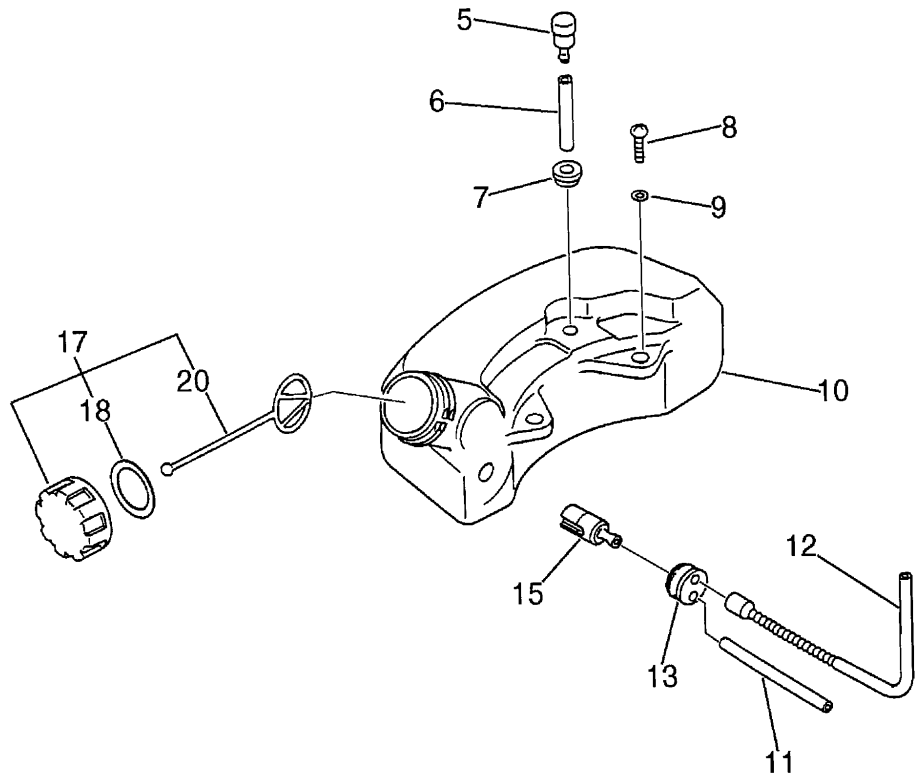
Group:Hedge Trimmers Model:HC-1600(6digits) (35) (36) Section:Air Cleaner, Muffler(Sr/Nr 36008141 and after) ( 6)





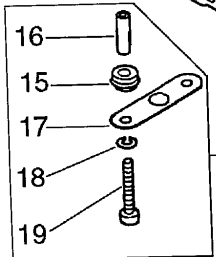
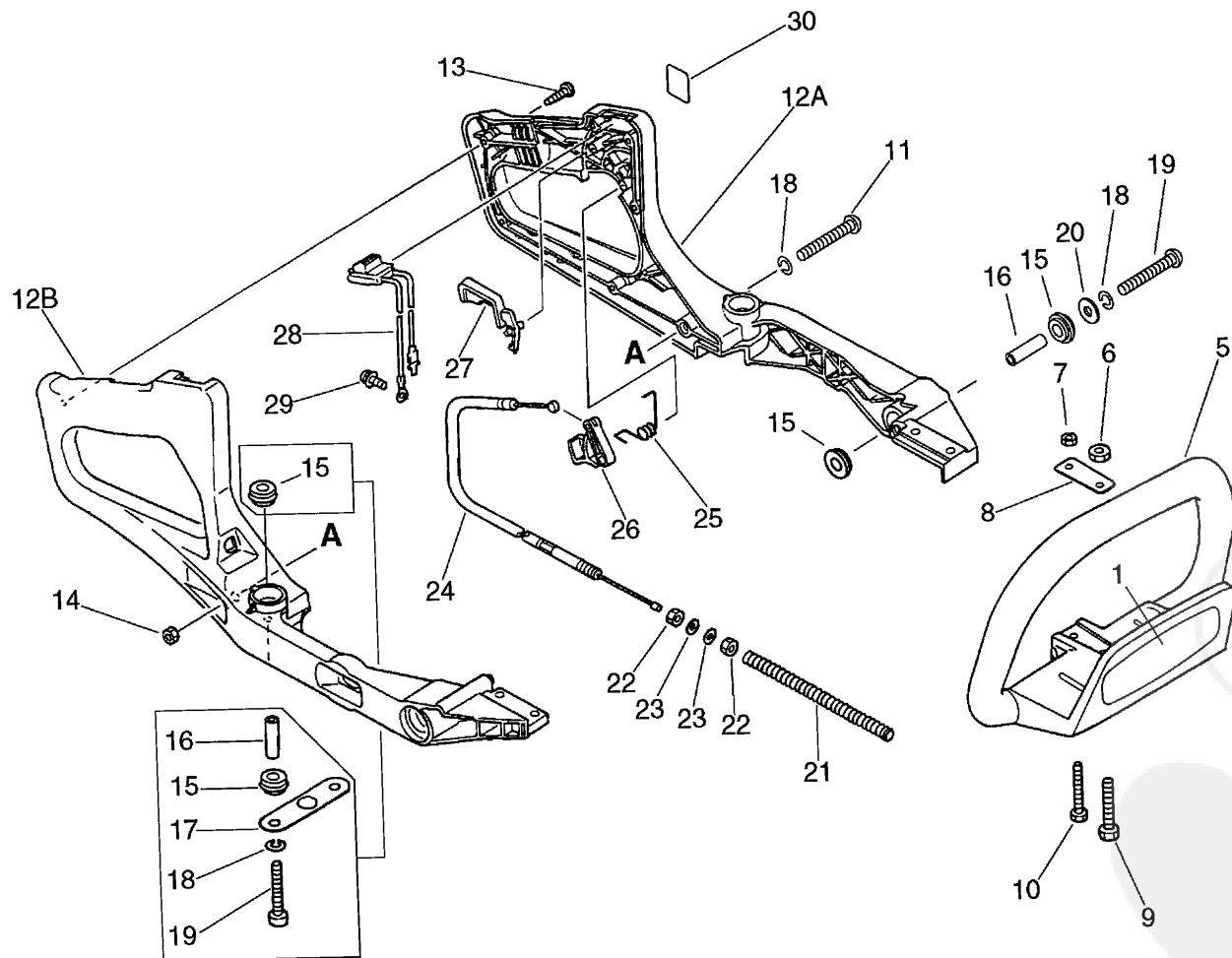


Group:Hedge Trimmers Model:HC-1600(6digits) (35) (36) Section:Fuel Tank( 7)

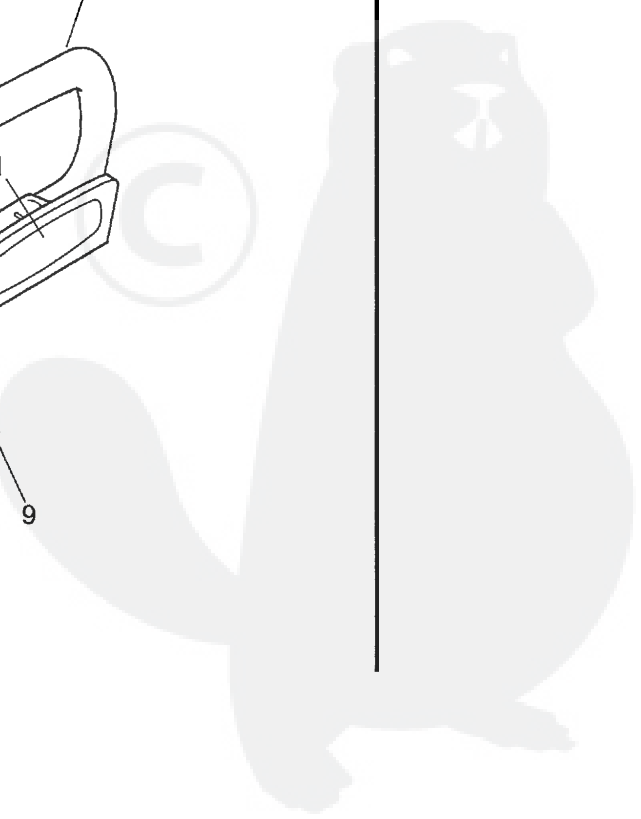
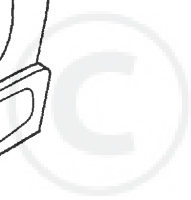




Group:Hedge Trimmers Model:HC-1600(6digits) (35) (36) Section:Handle ( 8)



Sr/Nr 36004240  
and before



## Parts List

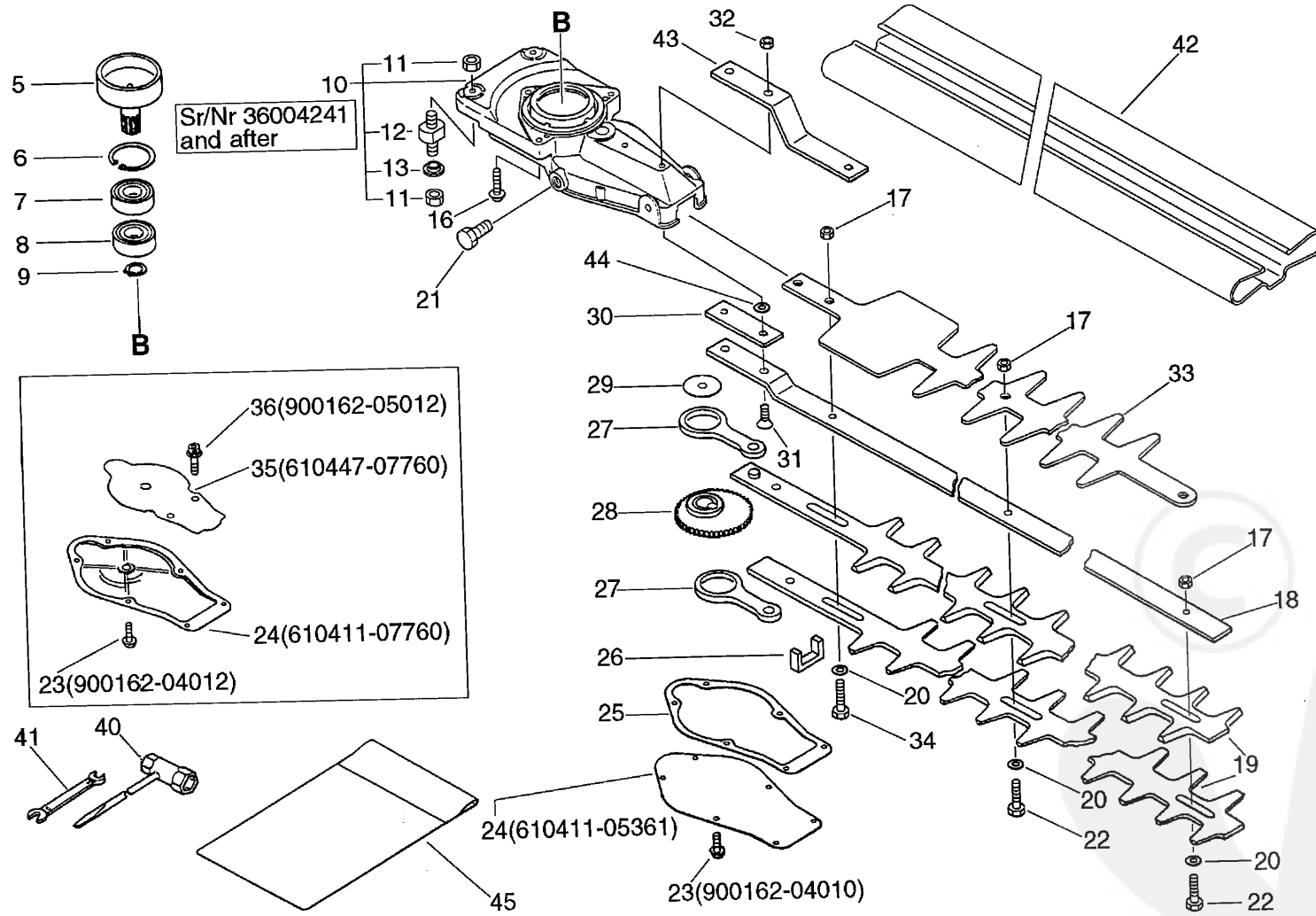
Date:24-8-2011 Page: 1

Group:Hedge Trimmers Model:HC-1600(6digits)(35)(36) Section:Handle( 8)

Key	Lv	Part Number	Q'ty	Description	Remarks	Note
1		X502-000260	1	LABEL, ECHO		
5		351610-05360	1	HANDLE, FRONT		
6		900500-00006	1	NUT 6		
7		900500-00005	1	NUT 5		
8		351611-05360	1	WASHER		
9		900100-06035	1	BOLT 6*35		
10		900100-05035	1	BOLT 5*35		
11		900242-05064	2	SCREW 5*64		
12A		351129-06960	1	HANDLE, REAR	Sus. by 351129-06961	
12A		351129-06961	1	HANDLE, REAR		
12B		351110-06960	1	HANDLE, REAR	Sus. by 351110-06961	
12B		351110-06961	1	HANDLE, REAR		
13		900253-04025	6	SCREW 4*25		
14		900500-00005	2	NUT 5		
15		351228-06960	8	CUSHION	Sr/Nr 36004240 and before	
15		351228-06960	4	CUSHION	Sr/Nr 36004241 and after	
16		351241-01260	4	SPASER	Sr/Nr 36004240 and before	
16		351241-01260	2	SPASER	Sr/Nr 36004241 and after	
17		351242-06960	1	PLATE, EYE	Sus. by 351242-06961	
17		351242-06961	1	PLATE, EYE	Sr/Nr 36004240 and before	
18		900605-00005	4	WASHER, SPRING 5	Sr/Nr 36004240 and before	
18		900605-00005	2	WASHER, SPRING 5	Sr/Nr 36004241 and after	
19		900220-05040	4	SCREW 5*40	Sr/Nr 36004240 and before	
19		900220-05040	2	SCREW 5*40	Sr/Nr 36004241 and after	
20		351249-06960	2	WASHER		
21		178127-06960	1	TUBE		
22		900502-00006	2	NUT 6 (3N)		
23		900600-00006	2	WASHER 6		



Group:Hedge Trimmers Model:HC-1600(6digits) (35) (36) Section:Gear Case, Cutter, Tools( 9)



## Parts List

Date:24-8-2011 Page: 1

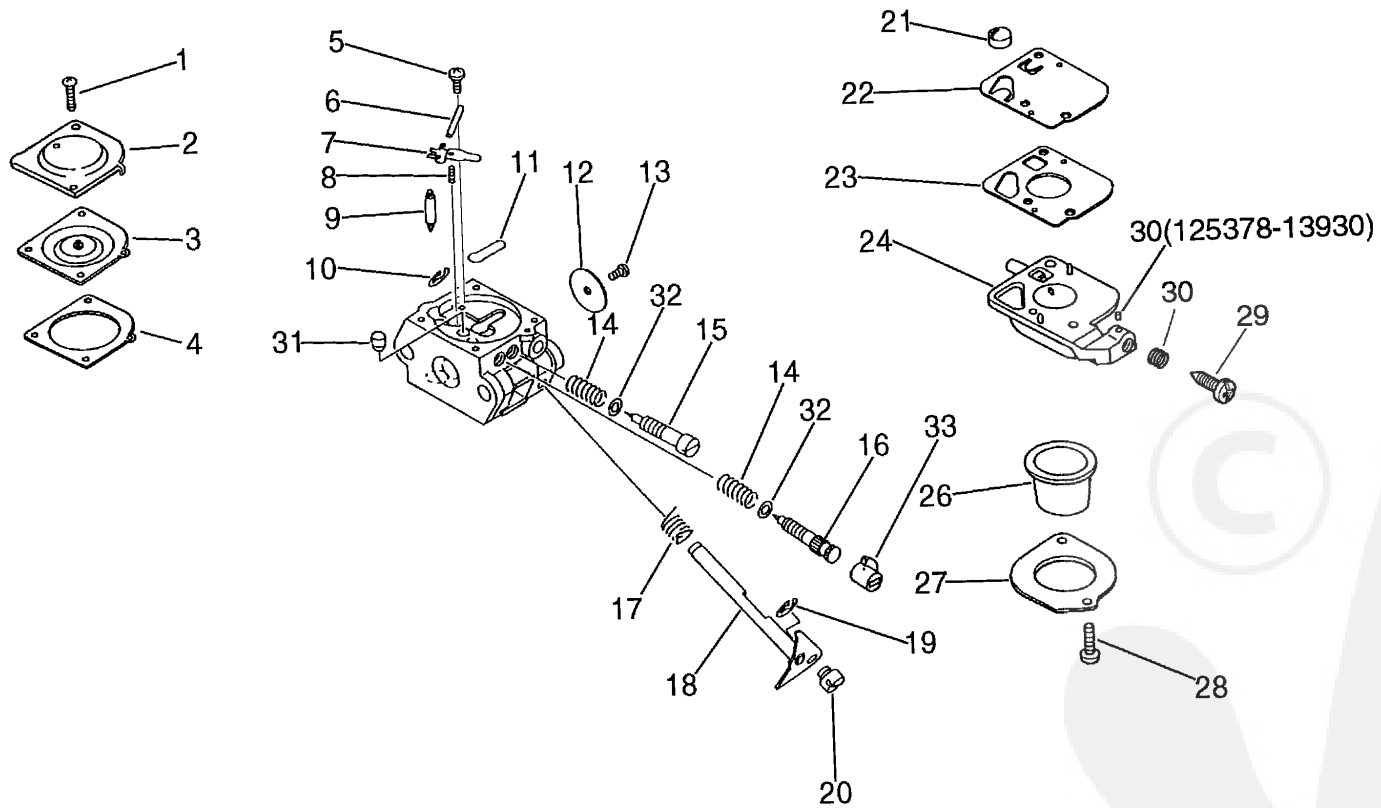
Group:Hedge Trimmers Model:HC-1600(6digits)(35)(36) Section:Gear Case, Cutter, Tools( 9)

Key	Lv	Part Number	Q'ty	Description	Remarks	Note
5		175005-04560	1	DRUM, CLUTCH		
6		900702-30035	1	CIRCLIP 35		
7		900813-36202	1	BEARING, BALL 6202		
8		900810-36202	1	BEARING, BALL 6202		
9		900701-00014	1	CIRCLIP 14		
10		610410-07760	1	CASE, GEAR	Sr/Nr 052281 and before	
10		610407-07760	1	CASE, GEAR	Sr/Nr 052282 to 36004240	
10		P021-009900	1	CASE, GEAR ASY	Sr/Nr 36004241 and after	
11	+	900562-00005	4	NUT, LOCK	Can be used on the P021-009900 only	
12	+	V401-000130	2	CUSHION,5	Can be used on the P021-009900 only	
13	+	V353-030210	2	COLLAR,5	Can be used on the P021-009900 only	
16		900162-05025	3	BOLT, H.S. 5*25		
17		433022-06460	5	NUT		
18		699110-06561	1	SUPPORT, CUTTER	Sus. by 699110-06561	
18		X425-C00090	1	SUPPORT,CUTTER	Sus. by 699110-06561	
18		699110-06561	1	SUPPORT,CUTTER		
19		697005-06560	2	CUTTER	Sus. by X411-000340	
19		X411-000110	2	CUTTER	Sus. by X411-000340	
19		X411-000340	2	CUTTER		
20		699113-04560	5	WASHER		
21		610434-50030	1	BOLT 8* 6	Sr/Nr 3501000 and before	
21		900100-08008	1	BOLT 8*8	Sr/Nr 3501001 and after	
22		699115-04660	5	BOLT 6	Sr/Nr 037961 and before	
22		699115-04660	4	BOLT 6	Sr/Nr 037962 and after	
23		900162-04010	6	BOLT, H.S. 4*10	Sr/Nr 052281 and before	
23		900162-04012	6	BOLT, H.S. 4*12	Sr/Nr 052282 and after	
24		610411-05361	1	LID, GEARCASE	Sr/Nr 052281 and before	
24		610411-07760	1	LID, GEAR CASE	Sr/Nr 052282 and after	





Group:Hedge Trimmers Model:HC-1600(6digits)(35)(36) Section:Carburetor(Sr/Nr 028000 to 047406)( 10)



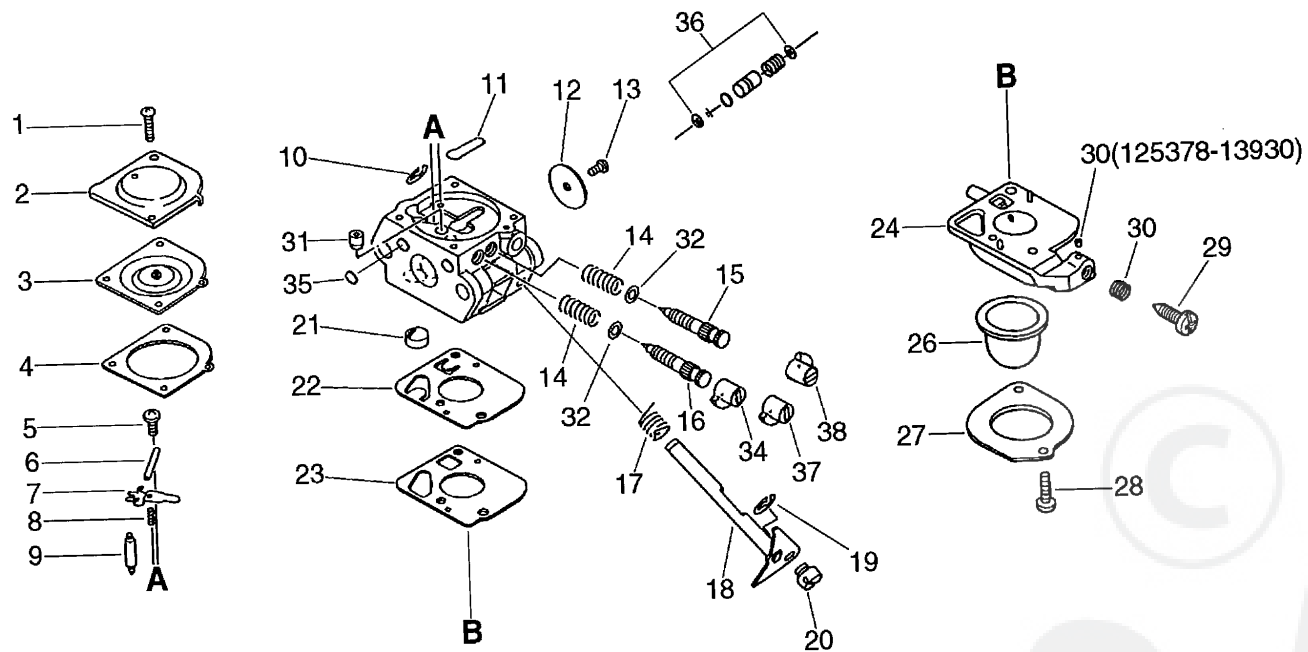
Parts List

Group:Hedge Trimmers Model:HC-1600(6digits)(35)(36) Section:Carburetor(Sr/Nr 028000 to 047406) ( 10)

Key	Lv	Part Number	Q'ty	Description	Remarks	Note
		125200-07760	1	CARBURETOR ASSY	Sus. by 125200-07761	
		125200-07761	1	CARBURETOR ASSY	Sr/Nr 028000 to 047406	
1	+	125344-52130	2	SCREW		
2	+	125342-52130	1	COVER, DIAPHRAGM	Sus. by 125342-13210	
2	+	125342-13210	1	COVER, DIAPHRAGM		
3	+	125341-42030	1	DIAPHRAGM		
4	+	125340-51030	1	GASKET, DIAPHRAGM		
5	+	125339-42030	1	SCREW		
6	+	125338-13930	1	PIN, METERING ARM		
7	+	125323-42030	1	LEVER, METERING		
8	+	125322-42030	1	SPRING, COIL		
9	+	125337-06960	1	VALVE, INLET NEEDLE		
10	+	125327-15130	1	CLIP		
11	+	125345-15130	1	PLUG, WELCH		
12	+	125316-42030	1	VALVE, THROTTLE		
13	+	125314-13930	1	SCREW		
14	+	125319-42030	2	SPRING, COIL		
15	+	125318-42030	1	NEEDLE, IDLE		
16	+	125323-07760	1	NEEDLE, HIGH SPEED		
17	+	125313-42030	1	SPRING, THRT. RETURN		
18	+	125317-42030	1	SHAFT, THROTTLE		
19	+	125327-13930	1	CLIP		
20	+	125372-42030	1	SWIVEL		
21	+	125326-42030	1	STRAINER		
22	+	125312-42030	1	DIAPHRAGM, FUEL PUMP	Can be used on the125200-07760 only	
22	+	125312-12820	1	DIAPHRAGM, FUEL PUMP	Can be used on the125200-07761 only	
23	+	125325-42030	1	GASKET, FUEL PUMP	Sus. by 125325-13310	
23	+	125325-13310	1	GASKET, FUEL PUMP		



Group:Hedge Trimmers Model:HC-1600(6digits) (35) (36) Section:Carburetor(Sr/Nr 047407 and after) ( 11)



**Parts List**

Date:24-8-2011 Page: 1

Group:Hedge Trimmers Model:HC-1600(6digits)(35)(36) Section:Carburetor(Sr/Nr 047407 and after) ( 11)

Key	Lv	Part Number	Q'ty	Description	Remarks	Note
		125200-38460	1	CARBURETOR ASSY	Sus. by 125200-05964	
		125200-05961	1	CARBURETOR CIU-K51	Sus. by 125200-05964	
		125200-05962	1	CARBURETOR	Sus. by 125200-05964	
		125200-05963	1	CARBURETOR	Sus. by 125200-05964	
		125200-05964	1	CARBURETOR	Sr/Nr 047407 and after	
1	+	125344-52130	2	SCREW		
2	+	125342-13210	1	COVER, DIAPHRAGM	Sus. by 125342-52130	
2	+	125342-52130	1	COVER, DIAPHRAGM		
3	+	125341-42030	1	DIAPHRAGM	Sr/Nr 047407 to 060592	
3	+	125341-49030	1	DIAPHRAGM	Sr/Nr 060593 and after	
4	+	125340-51030	1	GASKET, DIAPHRAGM		
5	+	125339-42030	1	SCREW		
6	+	125338-13930	1	PIN, METERING ARM		
7	+	125323-42030	1	LEVER, METERING		
8	+	125322-42030	1	SPRING, COIL		
9	+	125337-06960	1	VALVE, INLET NEEDLE		
10	+	125327-15130	1	CLIP		
11	+	125345-15130	1	PLUG, WELCH		
12	+	125315-49030	1	VALVE, THROTTLE		
13	+	125314-13930	1	SCREW		
14	+	125319-42030	2	SPRING, COIL	Sr/Nr 047407 to 060592	
15	+	125318-07360	1	NEEDLE, IDLE	Sr/Nr 047407 to 060592	
15	+	125318-13120	1	SCREW, IDLE NEEDLE	Sr/Nr 060593 and after	
16	+	125320-07360	1	NEEDLE, HIGH SPEED	Sr/Nr 047407 to 060592	
16	+	125320-13310	1	NEEDLE, HIGH SPEED	Sr/Nr 060593 and after	
17	+	125313-42030	1	SPRING, THRT. RETURN		
18	+	125317-49030	1	SHAFT, THROTTLE	Sr/Nr 047407 to 060592	
18	+	125317-13310	1	SHAFT, THROTTLE	Sr/Nr 060593 and after	

Parts List

Group:Hedge Trimmers Model:HC-1600(6digits)(35)(36) Section:Carburetor(Sr/Nr 047407 and after) ( 11)

Key	Lv	Part Number	Q'ty	Description	Remarks	Note
19	+	125327-13930	1	CLIP		
20	+	125372-42030	1	SWIVEL		
21	+	125326-42030	1	STRAINER		
22	+	125312-49030	1	DIAPHRAGM, FUEL PUMP	Can be used on the 125200-08460 only	
22	+	125312-12820	1	DIAPHRAGM, FUEL PUMP	Can be used on 125200-05961 and 125200-05962	
23	+	125325-42030	1	GASKET, FUEL PUMP	Sus. by 125325-13310	
23	+	125325-13310	1	GASKET, PUMP		
24	+	125324-11610	1	COVER, PUMP	Sus. by P005-000590	
24	+	125383-13310	1	BASE, PRIMER	Sus. by P005-000590	
24	+	P005-000590	1	BASE,ASY PRIMER		
26	+	125381-46730	1	PUMP, PRIMING	Sus. by 125381-08660	
26	+	125381-08660	1	PUMP, PRIMING		
27	+	125363-11610	1	RING		
28	+	12531C-11610	2	SCREW		
29	+	125334-13930	1	SCREW, IDLE ADJUST	Sr/Nr 065970 and before	
29	+	125334-06960	1	SCREW, THROTTLEADJUST	Sr/Nr 065971 and after	
30	+	125378-13930	1	PIECE, FRICTION	Sr/Nr 065970 and before	
30	+	125333-06960	1	SPRING, IDLE ADJUSTER	Sr/Nr 065971 and after	
31	+	125376-49030	1	NOZZLE, CHACK VALVE	Can be used on the 125200-08460 only	
31	+	125376-13120	1	NOZZLE, CHECK VALVE	Can be used on 125200-05961 and 125200-05962	
32	+	125353-20560	2	WASHER	Sr/Nr 047407 to 060592	
34	+	125329-39030	1	LIMITER, MIXTURE	Sr/Nr 35999999 and before	
35	+	125345-13310	1	PLUG, WELCH	Sr/Nr 060593 and after	
36	+	125306-13310	1	PUMP KIT, ACC.	Sr/Nr 060593 and after	
37		A259-000030	1	CAP, LIMITER	Sr/Nr 36001001 and after	
38		125329-09860	1	CAP, LIMITER	Sr/Nr 36001001 and after	
		125303-13310	1	DIAPHRAGM/GASKET KIT		
		125300-13310	1	REBUILD KIT		

