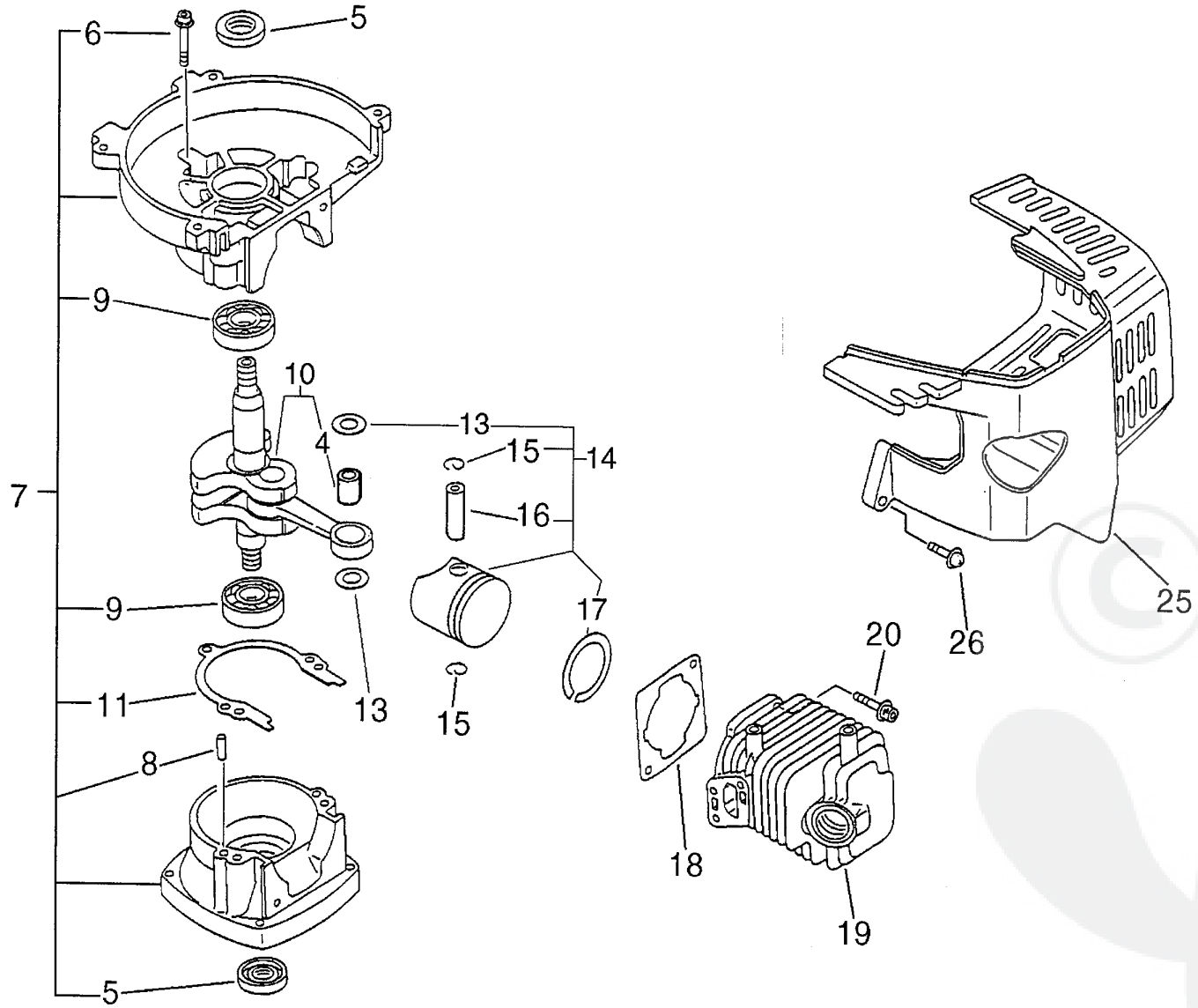


No.1



Parts List

Group:Hedge Trimmers Model:HC-2300 Section:Cylinder, Crankcase, Piston(1)

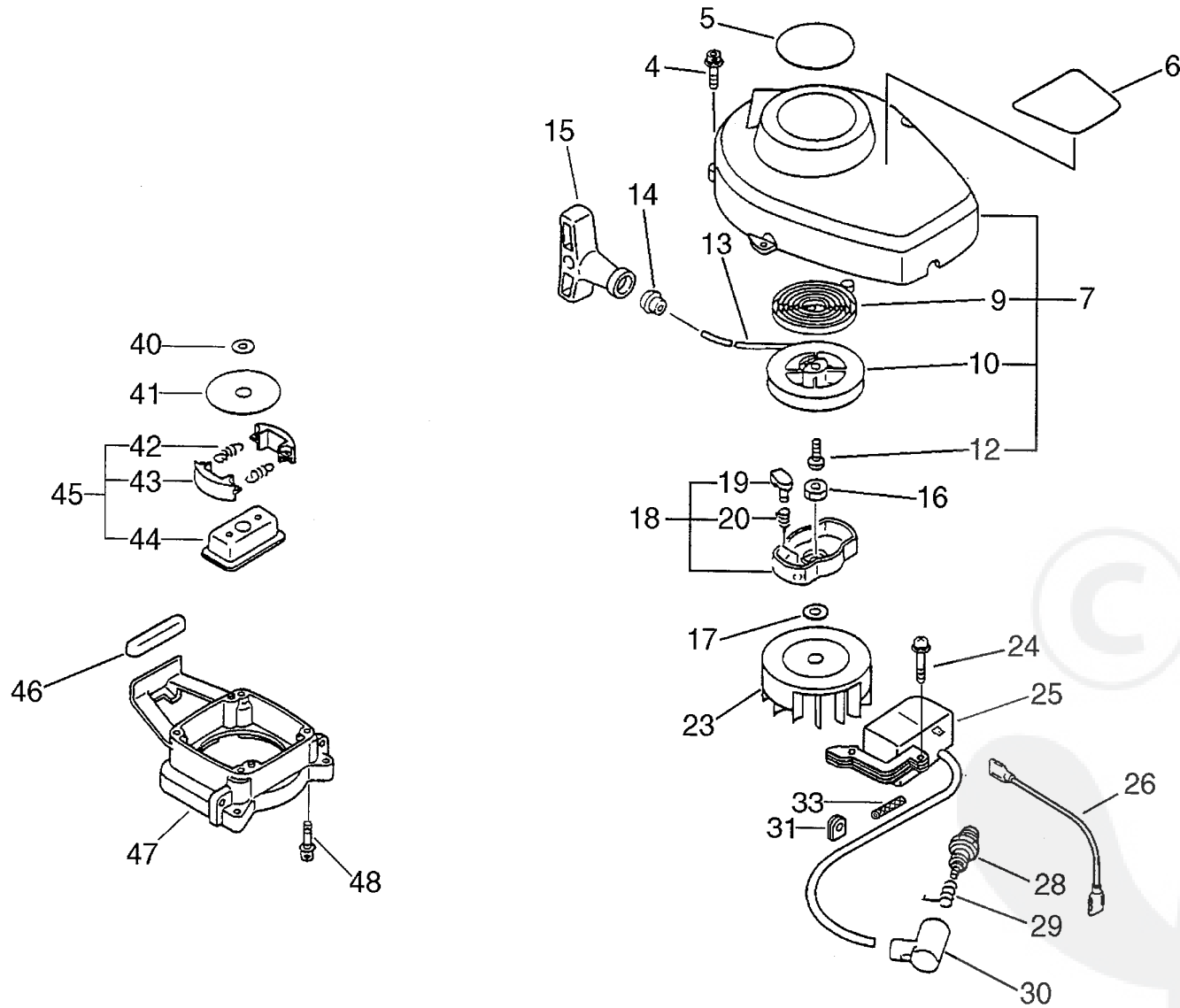
Key	Lv	Part Number	Q'ty	Description	Remarks	Note
7		100204-51030	1	CRANKCASE KIT	Sus. by 100204-51031	
7		100204-51030	1	CRANKCASE KIT	Sus. by 100204-51031	
7		100204-51031	1	CRANKCASE KIT		
7		100204-51031	1	CRANKCASE KIT		
5 +		100212-42030	2	OILSEAL	Sus. by 100212-42031	
5 +		100212-42030	2	OILSEAL	Sus. by 100212-42031	
5 +		100212-42031	2	OILSEAL		
5 +		100212-42031	2	OILSEAL		
6 +		900238-05028	3	SCREW 5*28	Sus. by 900162-05028	
6 +		900238-05028	3	SCREW 5*28	Sus. by 900162-05028	
6 +		900162-05028	3	BOLT, H.S. 5*28		
6 +		900162-05028	3	BOLT, H.S. 5*28		
8 +		100215-03930	2	PIN, DOWEL		
8 +		100215-03930	2	PIN, DOWEL		
9 +		900810-36201	2	BEARING, BALL 6201	Sus. by 94035-36201	
9 +		900810-36201	2	BEARING, BALL 6201	Sus. by 94035-36201	
9 +		94035-36201	2	BEARING, BALL		
9 +		94035-36201	2	BEARING, BALL		
11 +		100242-42030	1	GASKET, CRANKCASE		
11 +		100242-42030	1	GASKET, CRANKCASE		
10		100100-05962	1	CRANKSHAFT ASY	Sus. by 100100-05963	
10		100100-05962	1	CRANKSHAFT ASY	Sus. by 100100-05963	
10		100100-05963	1	CRANKSHAFT ASY		
10		100100-05963	1	CRANKSHAFT ASY		
4 +		100012-51230	1	BEARING, NEEDLE	Sus. by V553-000010	
4 +		100012-51230	1	BEARING, NEEDLE	Sus. by V553-000010	
4 +		V553-000030	1	BEARING, NEEDLE	Sus. by V553-000010	
4 +		V553-000030	1	BEARING, NEEDLE	Sus. by V553-000010	

Parts List

Group:Hedge Trimmers Model:HC-2300 Section:Cylinder, Crankcase, Piston(1)

Key	Lv	Part Number	Q'ty	Description	Remarks	Note
4	+	V553-000010	1	BEARING, NEEDLE		
4	+	V553-000010	1	BEARING, NEEDLE		
14		100000-44330	1	PISTON KIT	Sus. by 100000-44331	
14		100000-44330	1	PISTON KIT	Sus. by 100000-44331	
14		100000-44331	1	PISTON KIT		
14		100000-44331	1	PISTON KIT		
13	+	100014-11520	2	SPACER, PISTON PIN		
13	+	100014-11520	2	SPACER, PISTON PIN		
15	+	100015-04630	2	CIRCLIP, PISTON PIN		
15	+	100015-04630	2	CIRCLIP, PISTON PIN		
16	+	100013-11520	1	PIN, PISTON		
16	+	100013-11520	1	PIN, PISTON		
17	+	100011-05330	1	RING, PISTON		
17	+	100011-05330	1	RING, PISTON		
18		101010-44331	1	GASKET, CYL. BASE	Sus. by 101010-44332	
18		101010-44331	1	GASKET, CYL. BASE	Sus. by 101010-44332	
18		101010-44332	1	GASKET, CYL. BASE		
18		101010-44332	1	GASKET, CYL. BASE		
19		101011-45230	1	CYLINDER		
19		101011-45230	1	CYLINDER		
20		900162-05022	2	BOLT, H.S. 5*22		
20		900162-05022	2	BOLT, H.S. 5*22		
25		101514-05960	1	COVER, CYLINDER		
25		101514-05960	1	COVER, CYLINDER		
26		900238-04022	2	SCREW 4*22		
26		900238-04022	2	SCREW 4*22		

No.2



Parts List

Group:Hedge Trimmers Model:HC-2300 Section:Starter, Magneto, Clutch(2)

Key	Lv	Part Number	Q'ty	Description	Remarks	Note
4		900238-04016	4	SCREW 4*16		
4		900238-04016	4	SCREW 4*16		
5		890118-49130	1	LABEL, ECHO	Sus. by 890112-07560	
5		890118-49130	1	LABEL, ECHO	Sus. by 890112-07560	
5		890112-07560	1	LABEL, MODEL		
5		890112-07560	1	LABEL, MODEL		
6		890112-07360	1	LABEL, MODEL HC-2300	Sus. by 890617-07660	
6		890112-07360	1	LABEL, MODEL HC-2300	Sus. by 890617-07660	
6		890112-07361	1	LABEL, MODEL	Sus. by 890617-07660	
6		890112-07361	1	LABEL, MODEL	Sus. by 890617-07660	
6		890112-07362	1	LABEL, MODEL 1996	Sus. by 890617-07660	
6		890112-07362	1	LABEL, MODEL 1996	Sus. by 890617-07660	
6		890617-07660	1	LABEL, CAUTION		
6		890617-07660	1	LABEL, CAUTION		
7		177200-07162	1	STARTER ASY		
7		177200-07162	1	STARTER ASY		
9 +		177220-42030	1	SPRING, REWIND		
9 +		177220-42030	1	SPRING, REWIND		
10 +		177215-05960	1	DRUM, STARTER		
10 +		177215-05960	1	DRUM, STARTER		
12 +		177236-44330	1	SCREW		
12 +		177236-44330	1	SCREW		
13 +		177226-05960	1	ROPE, STARTER		
13 +		177226-05960	1	ROPE, STARTER		
14 +		177227-42030	1	GUIDE, ROPE		
14 +		177227-42030	1	GUIDE, ROPE		
15 +		177228-06530	1	GRIP, STARTER		
15 +		177228-06530	1	GRIP, STARTER		

P a r t s L i s t

Group:Hedge Trimmers Model:HC-2300 Section:Starter, Magneto, Clutch(2)

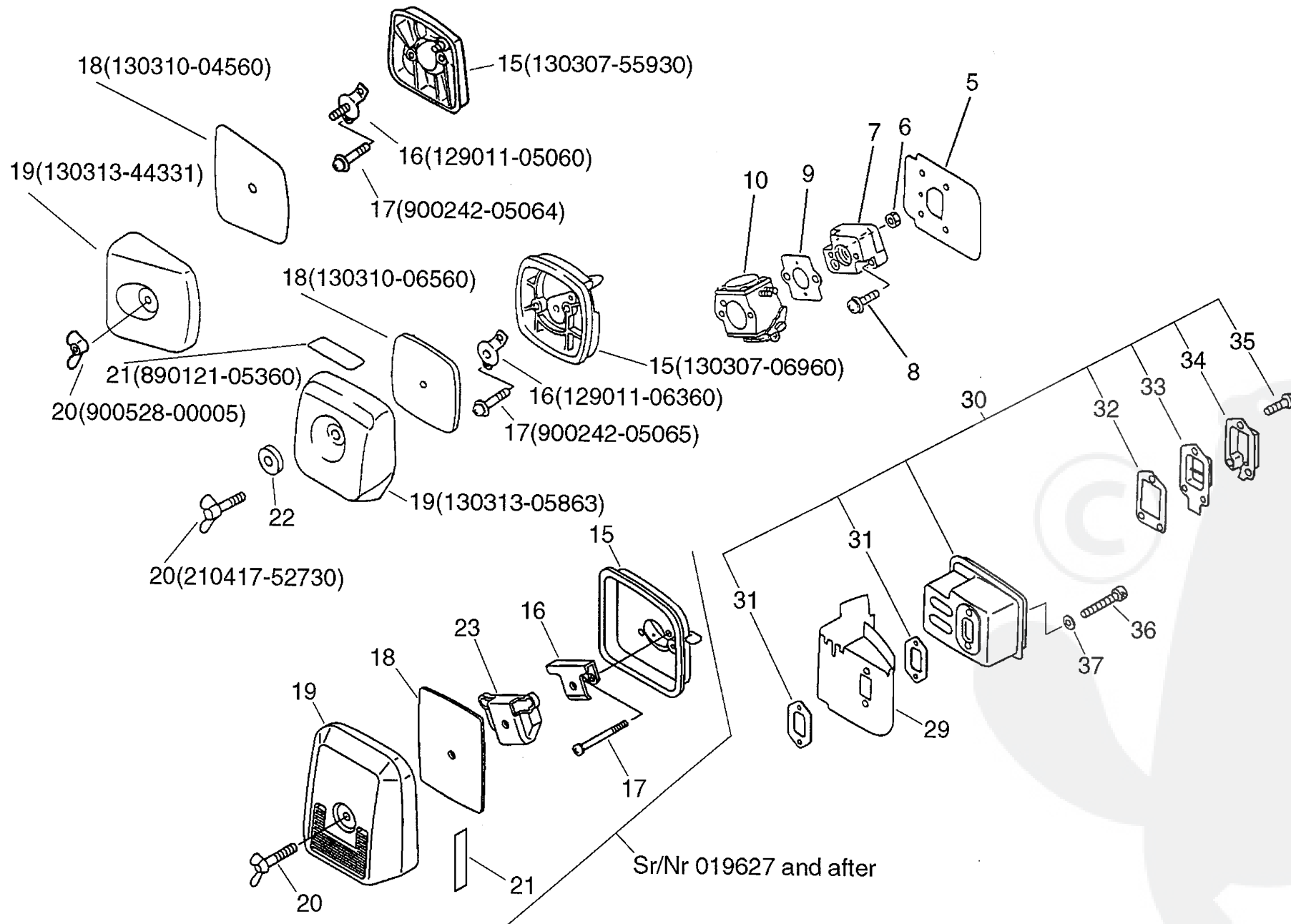
Key	Lv	Part Number	Q'ty	Description	Remarks	Note
16		900512-00008	1	NUT 3N 8 (L-H)		
16		900512-00008	1	NUT 3N 8 (L-H)		
17		900600-00008	1	WASHER 8		
17		900600-00008	1	WASHER 8		
18		177202-07360	1	PAWL ASSY, STARTER	Sus. by 177202-07361	
18		177202-07360	1	PAWL ASSY, STARTER	Sus. by 177202-07361	
18		177202-07361	1	PAWL ASSY, STARTER		
18		177202-07361	1	PAWL ASSY, STARTER		
19	+	177218-44330	1	PAWL, STARTER		
19	+	177218-44330	1	PAWL, STARTER		
20	+	177234-05960	1	SPRING, RETURN	Sus. by P022-007980	
20	+	177234-05960	1	SPRING, RETURN	Sus. by P022-007980	
20	+	P022-007980	1	SPRING, RETURN		
20	+	P022-007980	1	SPRING, RETURN		
23		156801-44730	1	FLYWHEEL	Sus. by 156801-44731	
23		156801-44730	1	FLYWHEEL	Sus. by 156801-44731	
23		156801-12360	1	ROTOR, MAGNETO	Sus. by 156801-44731	
23		156801-12360	1	ROTOR, MAGNETO	Sus. by 156801-44731	
23		156801-44731	1	FLYWHEEL		
23		156801-44731	1	FLYWHEEL		
24		900238-04022	2	SCREW 4*22		
24		900238-04022	2	SCREW 4*22		
25		156601-44730	1	COIL, IGNITION	Sus. by 156601-44731	
25		156601-44730	1	COIL, IGNITION	Sus. by 156601-44731	
25		156601-44731	1	COIL, IGNITION	Sr/Nr 017876 and before	
25		156601-44731	1	COIL, IGNITION	Sr/Nr 017876 and before	
25		156601-52130	1	COIL, IGNITION	Sr/Nr 017877 and after	
25		156601-52130	1	COIL, IGNITION	Sr/Nr 017877 and after	

P a r t s L i s t

Group:Hedge Trimmers Model:HC-2300 Section:Starter, Magneto, Clutch(2)

Key	Lv	Part Number	Q'ty	Description	Remarks	Note
26		162010-52830	1	LEAD, GROUND	Sr/Nr 017877 and after	
26		162010-52830	1	LEAD, GROUND	Sr/Nr 017877 and after	
28		159017-10230	1	PLUG, SPARK (RCJ-7Y)		
28		159017-10230	1	PLUG, SPARK (RCJ-7Y)		
29		159011-03432	1	COIL, SPARK PLUG CAP		
29		159011-03432	1	COIL, SPARK PLUG CAP		
30		159012-03433	1	CAP, SPARK PLUG		
30		159012-03433	1	CAP, SPARK PLUG		
31		156110-04920	1	BUSHING		
31		156110-04920	1	BUSHING		
33		V475-001900	1	TUBE		
33		V475-001900	1	TUBE		
40		175014-05360	1	WASHER, CLUTCH		
40		175014-05360	1	WASHER, CLUTCH		
41		175019-04920	1	PLATE, CLUTCH		
41		175019-04920	1	PLATE, CLUTCH		
45		175000-02962	1	CLUTCH ASY		
45		175000-02962	1	CLUTCH ASY		
42	+	175018-05960	2	SPRING, CLUTCH		
42	+	175018-05960	2	SPRING, CLUTCH		
43	+	175009-05131	2	SHOE, CLUTCH		
43	+	175009-05131	2	SHOE, CLUTCH		
44	+	175016-07330	1	HUB, CLUTCH		
44	+	175016-07330	1	HUB, CLUTCH		
46		131920-28230	1	CUSHION, FUEL TANK		
46		131920-28230	1	CUSHION, FUEL TANK		
47		610223-05960	1	CASE, CLUTCH		
47		610223-05960	1	CASE, CLUTCH		

No.3



P a r t s L i s t

Group:Hedge Trimmers Model:HC-2300 Section:Air Cleaner, Muffler(3)

Key	Lv	Part Number	Q'ty	Description	Remarks	Note
5		130010-42032	1	GASKET, INTAKE		
5		130010-42032	1	GASKET, INTAKE		
6		900500-00005	2	NUT 5		
6		900500-00005	2	NUT 5		
7		130017-42031	1	INSULATOR, INTAKE		
7		130017-42031	1	INSULATOR, INTAKE		
8		900238-05020	2	SCREW 5*20		
8		900238-05020	2	SCREW 5*20		
9		130016-42031	1	GASKET, INTAKE		
9		130016-42031	1	GASKET, INTAKE		
10		125200-06961	1	CARBURETOR ASY	Sus. by 125200-05964	
10		125200-06961	1	CARBURETOR ASY	Sus. by 125200-05964	
10		125200-06962	1	CARBURETOR ASY	Sus. by 125200-05964	
10		125200-06962	1	CARBURETOR ASY	Sus. by 125200-05964	
10		125200-05961	1	CARBURETOR C1U-K51	Sus. by 125200-05964	
10		125200-05961	1	CARBURETOR C1U-K51	Sus. by 125200-05964	
10		125200-05962	1	CARBURETOR	Sus. by 125200-05964	
10		125200-05962	1	CARBURETOR	Sus. by 125200-05964	
10		125200-05963	1	CARBURETOR	Sus. by 125200-05964	
10		125200-05963	1	CARBURETOR	Sus. by 125200-05964	
10		125200-05964	1	CARBURETOR		
10		125200-05964	1	CARBURETOR		
15		130307-05360	1	CASE, AIR CLEANER	Sus. by 130307-55930	
15		130307-05360	1	CASE, AIR CLEANER	Sus. by 130307-55930	
15		130307-55930	1	CASE, AIR CLEANER	Sr/Nr 007566 and before	
15		130307-55930	1	CASE, AIR CLEANER	Sr/Nr 007566 and before	
15		130307-06960	1	CASE, AIR CLEANER	Sr/Nr 007567 to 019626	
15		130307-06960	1	CASE, AIR CLEANER	Sr/Nr 007567 to 019626	

P a r t s L i s t

Group:Hedge Trimmers Model:HC-2300 Section:Air Cleaner, Muffler(3)

Key	Lv	Part Number	Q'ty	Description	Remarks	Note
15		130307-09660	1	CASE ASY, CLEANER	Sus. by 130307-09662	
15		130307-09660	1	CASE ASY, CLEANER	Sus. by 130307-09662	
15		130307-09661	1	CASE ASY, CLEANER	Sus. by 130307-09662	
15		130307-09661	1	CASE ASY, CLEANER	Sus. by 130307-09662	
15		130307-09662	1	CASE ASY, CLEANER	Sr/Nr 019627 and after	
15		130307-09662	1	CASE ASY, CLEANER	Sr/Nr 019627 and after	
16		129011-05060	1	PLATE	Sr/Nr 007566 and before	
16		129011-05060	1	PLATE	Sr/Nr 007566 and before	
16		129011-06360	1	PLATE, PREVENT	Sr/Nr 007567 to 019626	
16		129011-06360	1	PLATE, PREVENT	Sr/Nr 007567 to 019626	
16		130422-09660	1	PLATE, PREVENT	Sr/Nr 019627 and after	
16		130422-09660	1	PLATE, PREVENT	Sr/Nr 019627 and after	
17		900242-05064	2	SCREW 5*64	Sr/Nr 007566 and before	
17		900242-05064	2	SCREW 5*64	Sr/Nr 007566 and before	
17		900242-05065	2	SCREW 5*65	Sr/Nr 007567 to 019626	
17		900242-05065	2	SCREW 5*65	Sr/Nr 007567 to 019626	
17		900242-05057	2	SCREW 5*57	Sr/Nr 019627 and after	
17		900242-05057	2	SCREW 5*57	Sr/Nr 019627 and after	
18		130310-04560	1	FILTER, AIR	Sr/Nr 007566 and before	
18		130310-04560	1	FILTER, AIR	Sr/Nr 007566 and before	
18		130310-06560	1	FILTER, AIR	Sr/Nr 007567 to 019626	
18		130310-06560	1	FILTER, AIR	Sr/Nr 007567 to 019626	
18		130310-51830	1	FILTER, AIR	Sr/Nr 019627 and after	
18		130310-51830	1	FILTER, AIR	Sr/Nr 019627 and after	
19		130313-44331	1	COVER, AIR CLEANER	Sr/Nr 007566 and before	
19		130313-44331	1	COVER, AIR CLEANER	Sr/Nr 007566 and before	
19		130313-05862	1	LID, CLEANER(ID1110)	Sus. by 130313-05863	
19		130313-05862	1	LID, CLEANER(ID1110)	Sus. by 130313-05863	

Parts List

Group:Hedge Trimmers Model:HC-2300 Section:Air Cleaner, Muffler(3)

Key	Lv	Part Number	Q'ty	Description	Remarks	Note
19		130313-05863	1	LID, AIR CLEANER	Sr/Nr 007567 to 019626	
19		130313-05863	1	LID, AIR CLEANER	Sr/Nr 007567 to 019626	
19		130313-09561	1	LID, CLEANER	Sr/Nr 019627 and after	
19		130313-09561	1	LID, CLEANER	Sr/Nr 019627 and after	
20		900528-00005	1	NUT	Sr/Nr 007566 and before	
20		900528-00005	1	NUT	Sr/Nr 007566 and before	
20		210417-52730	1	BOLT, WING	Sr/Nr 007567 to 019626	
20		210417-52730	1	BOLT, WING	Sr/Nr 007567 to 019626	
20		210417-09560	1	BOLD, WING	Sr/Nr 019627 and after	
20		210417-09560	1	BOLD, WING	Sr/Nr 019627 and after	
21		890121-05360	1	LABEL, METERING	Sr/Nr 019626 and before	
21		890121-05360	1	LABEL, METERING	Sr/Nr 019626 and before	
21		890121-09560	1	LABEL, CHOKE	Sr/Nr 019627 and after	
21		890121-09560	1	LABEL, CHOKE	Sr/Nr 019627 and after	
22		610444-28230	1	SPACER	Sr/Nr 007567 to 019626	
22		610444-28230	1	SPACER	Sr/Nr 007567 to 019626	
23		129011-09560	1	PLATE	Sr/Nr 019627 and after	
23		129011-09560	1	PLATE	Sr/Nr 019627 and after	
29		145871-44331	1	COVER, MUFFLER	Sus. by A320-000251	
29		145871-44331	1	COVER, MUFFLER	Sus. by A320-000251	
29		145631-42030	1	COVER, MUFFLER	Sus. by A320-000251	
29		145631-42030	1	COVER, MUFFLER	Sus. by A320-000251	
29		A320-000250	1	COVER, MUFFLER	Sus. by A320-000251	
29		A320-000250	1	COVER, MUFFLER	Sus. by A320-000251	
29		A320-000251	1	COVER, MUFFLER		
29		A320-000251	1	COVER, MUFFLER		
30		145802-05960	1	MUFFLER ASSY		
30		145802-05960	1	MUFFLER ASSY		

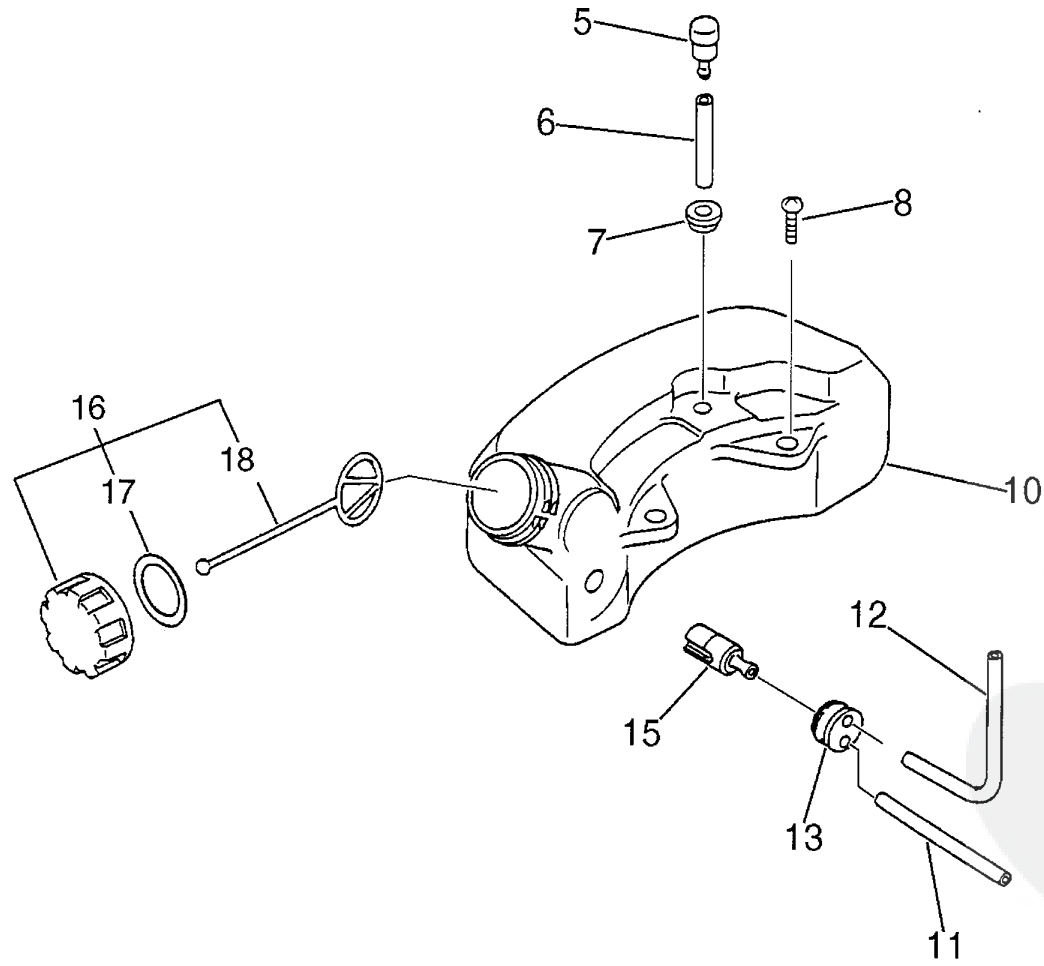
P a r t s L i s t

Group:Hedge Trimmers Model:HC-2300 Section:Air Cleaner, Muffler(3)

Key	Lv	Part Number	Q'ty	Description	Remarks	Note
31	+	145510-42031	2	GASKET, MUFFLER	Sus. by V104-000160	
31	+	145510-42031	2	GASKET, MUFFLER	Sus. by V104-000160	
31	+	V104-000160	2	GASKET, EXHAUST		
31	+	V104-000160	2	GASKET, EXHAUST		
32	+	145866-42031	1	GASKET, MUFFLER LID		
32	+	145866-42031	1	GASKET, MUFFLER LID		
33	+	145876-42030	1	LID, MUFFLER (B)		
33	+	145876-42030	1	LID, MUFFLER (B)		
34	+	145863-06960	1	FIXTURE, SCREEN		
34	+	145863-06960	1	FIXTURE, SCREEN		
35	+	900242-04010	3	SCREW 4*10		
35	+	900242-04010	3	SCREW 4*10		
36		900105-05055	2	BOLT, H.S. 5*55		
36		900105-05055	2	BOLT, H.S. 5*55		
37		900600-00005	2	WASHER 5		
37		900600-00005	2	WASHER 5		



No.4



Parts List

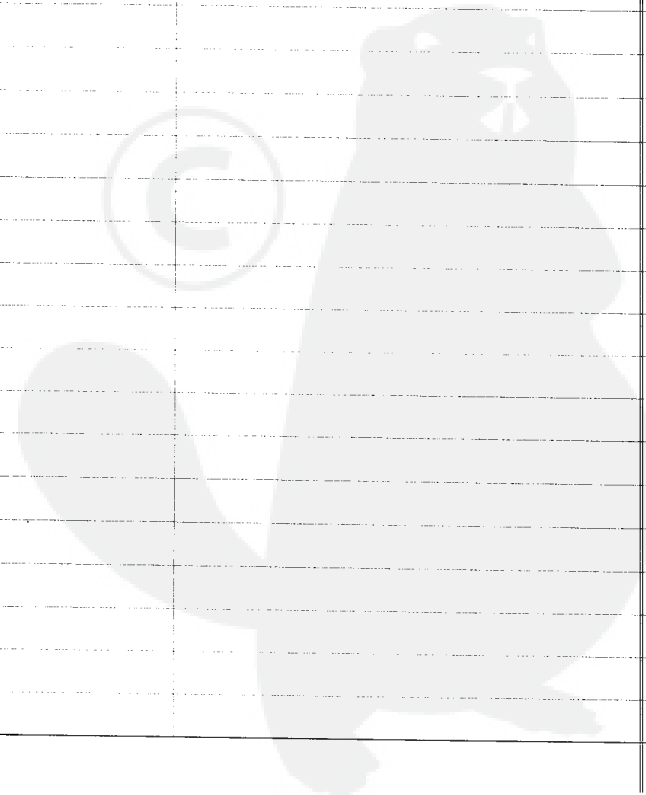
Group:Hedge Trimmers Model:HC-2300 Section:Fuel Tank(4)

Key	Lv	Part Number	Q'ty	Description	Remarks	Note
5		131300-49930	1	VALVE, CHECK	Sus. by 131300-56430	
5		131300-49930	1	VALVE, CHECK	Sus. by 131300-56430	
5		131300-56430	1	VALVE, CHECK		
5		131300-56430	1	VALVE, CHECK		
6		132010-21160	1	PIPE, FUEL	Sus. by V471-001180	
6		132010-21160	1	PIPE, FUEL	Sus. by V471-001180	
6		V471-001180	1	PIPE		
6		V471-001180	1	PIPE		
7		132115-01461	1	GROMMET, FUEL		
7		132115-01461	1	GROMMET, FUEL		
8		900243-05016	2	SCREW 5*16		
8		900243-05016	2	SCREW 5*16		
10		131002-08960	1	TANK, FUEL	Sus. by 131002-08961	
10		131002-08960	1	TANK, FUEL	Sus. by 131002-08961	
10		131002-08961	1	TANK, FUEL		
10		131002-08961	1	TANK, FUEL		
11		132717-06460	1	PIPE 3*5*110	Sus. by 132010-06460	
11		132717-06460	1	PIPE 3*5*110	Sus. by 132010-06460	
11		132010-06460	1	PIPE 3* 6*110		
11		132010-06460	1	PIPE 3* 6*110		
12		132010-02160	1	PIPE, FUEL (INNER)		
12		132010-02160	1	PIPE, FUEL (INNER)		
13		132115-44330	1	GROMMET		
13		132115-44330	1	GROMMET		
15		131205-50430	1	STRAINER, FUEL	Sus. by 131205-07320	
15		131205-50430	1	STRAINER, FUEL	Sus. by 131205-07320	
15		131205-07320	1	STRAINER, FUEL		
15		131205-07320	1	STRAINER, FUEL		

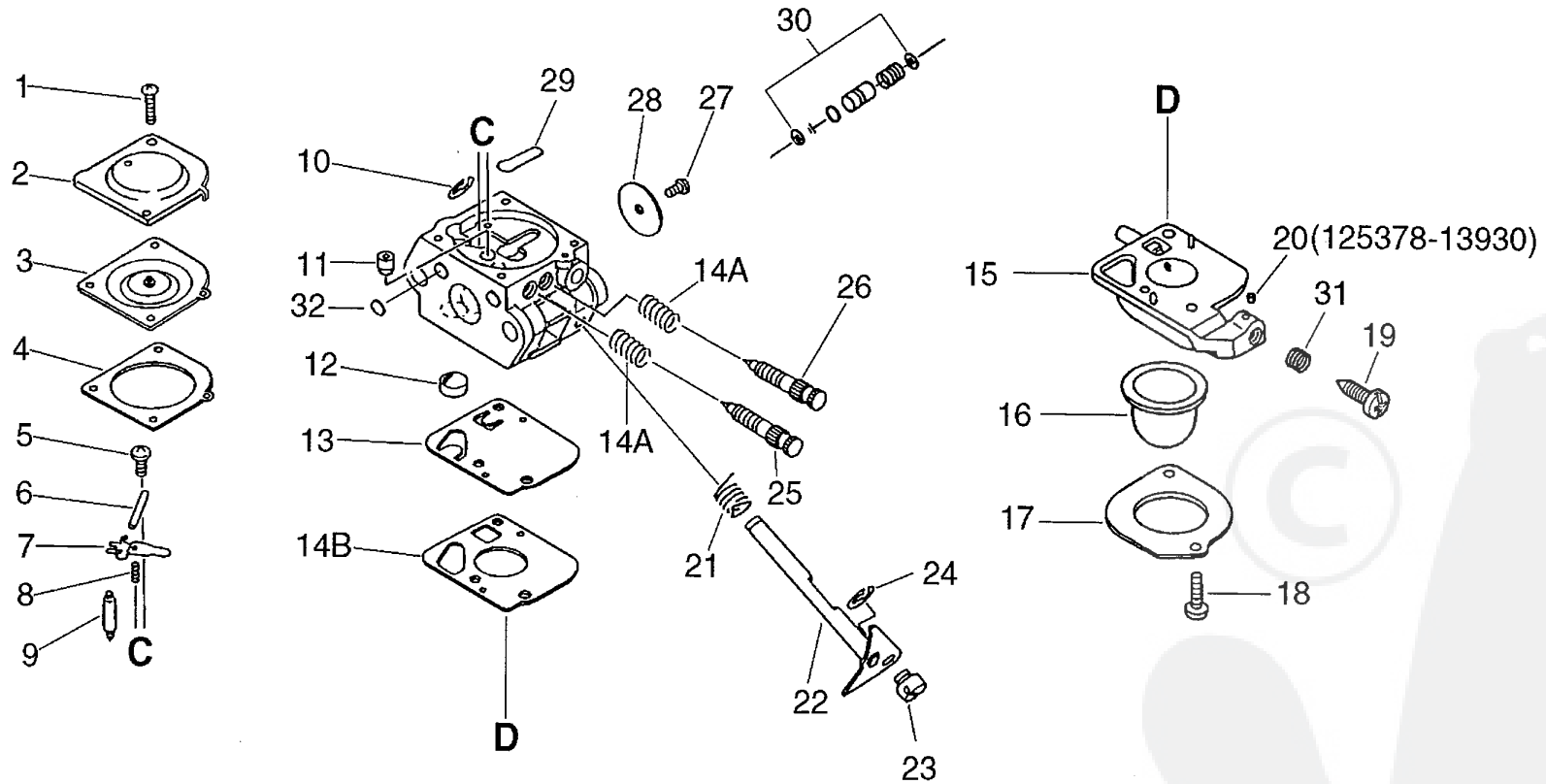
Parts List

Group:Hedge Trimmers Model:HC-2300 Section:Fuel Tank(4)

Key	Lv	Part Number	Q'ty	Description	Remarks	Note
16		131004-46730	1	CAP ASSY, FUEL TANK	Sus. by 131004-08960	
16		131004-46730	1	CAP ASSY, FUEL TANK	Sus. by 131004-08960	
16		131004-08960	1	CAP ASSY, FUEL		
16		131004-08960	1	CAP ASSY, FUEL		
17	+	131016-40630	1	GASKET, FUEL CAP	Can be used on 131004-46730	
17	+	131016-40630	1	GASKET, FUEL CAP	Can be used on 131004-46730	
17	+	131016-55830	1	GASKET, FUEL CAP	Can be used on 131004-08960	
17	+	131016-55830	1	GASKET, FUEL CAP	Can be used on 131004-08960	
18	+	131051-52430	1	CONNECTOR, CAP		
18	+	131051-52430	1	CONNECTOR, CAP		



No.5



A:125303-13310(3,4,13,14)

B:125300-13310(3,4,6,7,8,9,12,13,14,29)

Parts List

Group:Hedge Trimmers Model:HC-2300 Section:Carburetor(5)

Key	Lv	Part Number	Q'ty	Description	Remarks	Note
		125200-06961	1	CARBURETOR ASY	Sus. by 125200-05964	
		125200-06961	1	CARBURETOR ASY	Sus. by 125200-05964	
		125200-06962	1	CARBURETOR ASY	Sus. by 125200-05964	
		125200-06962	1	CARBURETOR ASY	Sus. by 125200-05964	
		125200-05961	1	CARBURETOR C1U-K51	Sus. by 125200-05964	
		125200-05961	1	CARBURETOR C1U-K51	Sus. by 125200-05964	
		125200-05962	1	CARBURETOR	Sus. by 125200-05964	
		125200-05962	1	CARBURETOR	Sus. by 125200-05964	
		125200-05963	1	CARBURETOR	Sus. by 125200-05964	
		125200-05963	1	CARBURETOR	Sus. by 125200-05964	
		125200-05964	1	CARBURETOR		
		125200-05964	1	CARBURETOR		
1 +		125344-52130	2	SCREW		
1 +		125344-52130	2	SCREW		
2 +		125342-52130	1	COVER, DIAPHRAGM		
2 +		125342-52130	1	COVER, DIAPHRAGM		
3 +		125341-42030	1	DIAPHRAGM	Sr/Nr 010916 and before	
3 +		125341-42030	1	DIAPHRAGM	Sr/Nr 010916 and before	
3 +		125341-49030	1	DIAPHRAGM	Sr/Nr 010917 and after	
3 +		125341-49030	1	DIAPHRAGM	Sr/Nr 010917 and after	
4 +		125340-51030	1	GASKET, DIAPHRAGM		
4 +		125340-51030	1	GASKET, DIAPHRAGM		
5 +		125339-42030	1	SCREW		
5 +		125339-42030	1	SCREW		
6 +		125338-13930	1	PIN, METERING ARM		
6 +		125338-13930	1	PIN, METERING ARM		
7 +		125323-42030	1	LEVER, METERING		
7 +		125323-42030	1	LEVER, METERING		

P a r t s L i s t

Group:Hedge Trimmers Model:HC-2300 Section:Carburetor(5)

Key	Lv	Part Number	Q'ty	Description	Remarks	Note
8	+	125322-07260	1	SPRING, COIL	Sr/Nr 010916 and before	
8	+	125322-07260	1	SPRING, COIL	Sr/Nr 010916 and before	
8	+	125322-42030	1	SPRING, COIL	Sr/Nr 010917 and after	
8	+	125322-42030	1	SPRING, COIL	Sr/Nr 010917 and after	
9	+	125337-06960	1	VALVE, INLET NEEDLE		
9	+	125337-06960	1	VALVE, INLET NEEDLE		
10	+	125327-15130	1	CLIP		
10	+	125327-15130	1	CLIP		
11	+	125376-13120	1	NOZZLE, CHECK VALVE		
11	+	125376-13120	1	NOZZLE, CHECK VALVE		
12	+	125326-42030	1	STRAINER		
12	+	125326-42030	1	STRAINER		
13	+	125312-42030	1	DIAPHRAGM, FUEL PUMP	Sr/Nr 010916 and before	
13	+	125312-42030	1	DIAPHRAGM, FUEL PUMP	Sr/Nr 010916 and before	
13	+	125312-12820	1	DIAPHRAGM, FUEL PUMP	Sr/Nr 010917 and after	
13	+	125312-12820	1	DIAPHRAGM, FUEL PUMP	Sr/Nr 010917 and after	
14A	+	125319-42030	1	SPRING, COIL	Sr/Nr 010916 and before	
14A	+	125319-42030	1	SPRING, COIL	Sr/Nr 010916 and before	
14B	+	125325-42030	1	GASKET, FUEL PUMP	Sr/Nr 010916 and before	
14B	+	125325-42030	1	GASKET, FUEL PUMP	Sr/Nr 010916 and before	
14B	+	125325-13310	1	GASKET, PUMP	Sr/Nr 010917 and after	
14B	+	125325-13310	1	GASKET, PUMP	Sr/Nr 010917 and after	
15	+	125324-11610	1	COVER, PUMP	Sr/Nr 010916 and before	
15	+	125324-11610	1	COVER, PUMP	Sr/Nr 010916 and before	
15	+	125383-13310	1	BASE, PRIMER	Sus. by P005-000590	
15	+	125383-13310	1	BASE, PRIMER	Sus. by P005-000590	
15	+	P005-000590	1	BASE,ASY PRIMER	Sr/Nr 010917 and after	
15	+	P005-000590	1	BASE,ASY PRIMER	Sr/Nr 010917 and after	

P a r t s L i s t

Group:Hedge Trimmers Model:HC-2300 Section:Carburetor(5)

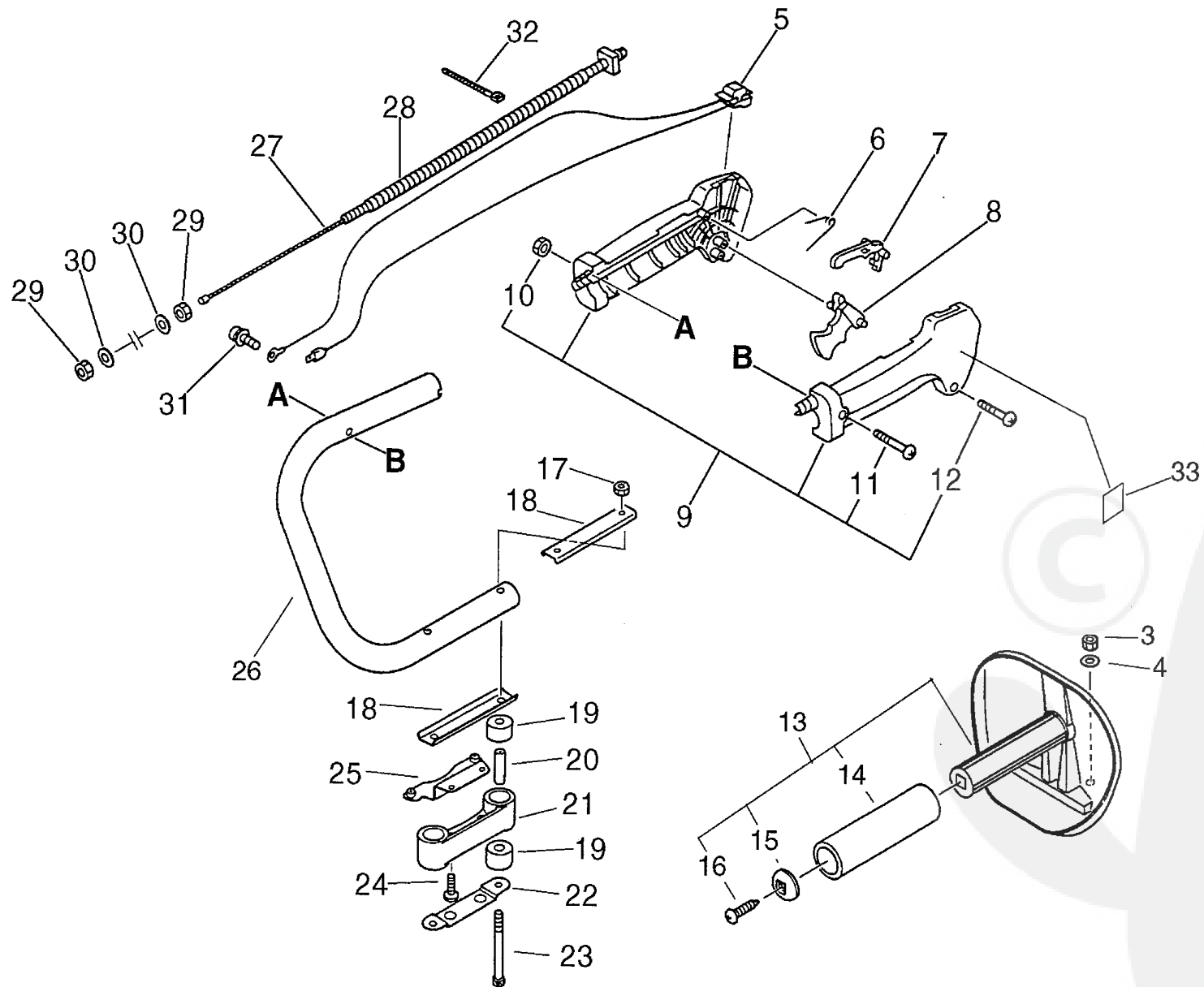
Key	Lv	Part Number	Q'ty	Description	Remarks	Note
16	+	125381-46730	1	PUMP, PRIMING	Sr/Nr 010916 and before	
16	+	125381-46730	1	PUMP, PRIMING	Sr/Nr 010916 and before	
16	+	125381-08660	1	PUMP, PRIMING	Sr/Nr 010917 and after	
16	+	125381-08660	1	PUMP, PRIMING	Sr/Nr 010917 and after	
17	+	125363-11610	1	RING		
17	+	125363-11610	1	RING		
18	+	125310-11610	2	SCREW		
18	+	125310-11610	2	SCREW		
19	+	125334-13930	1	SCREW, IDLE ADJUST	Sr/Nr 016476 and before	
19	+	125334-13930	1	SCREW, IDLE ADJUST	Sr/Nr 016476 and before	
19	+	125334-06960	1	SCREW, THROTTLEADJUST	Sr/Nr 016477 and after	
19	+	125334-06960	1	SCREW, THROTTLEADJUST	Sr/Nr 016477 and after	
20	+	125378-13930	1	PIECE, FRICTION	Sr/Nr 016476 and before	
20	+	125378-13930	1	PIECE, FRICTION	Sr/Nr 016476 and before	
21	+	125313-42030	1	SPRING, THRT. RETURN		
21	+	125313-42030	1	SPRING, THRT. RETURN		
22	+	125317-42030	1	SHAFT, THROTTLE	Sr/Nr 010916 and before	
22	+	125317-42030	1	SHAFT, THROTTLE	Sr/Nr 010916 and before	
22	+	125317-13310	1	SHAFT, THROTTLE	Sr/Nr 010917 and after	
22	+	125317-13310	1	SHAFT, THROTTLE	Sr/Nr 010917 and after	
23	+	125372-42030	1	SWIVEL		
23	+	125372-42030	1	SWIVEL		
24	+	125327-13930	1	CLIP		
24	+	125327-13930	1	CLIP		
25	+	125320-07260	1	NEEDLE, HIGH SPEED	Sr/Nr 010916 and before	
25	+	125320-07260	1	NEEDLE, HIGH SPEED	Sr/Nr 010916 and before	
25	+	125320-13310	1	NEEDLE, HIGH SPEED	Sr/Nr 010917 and after	
25	+	125320-13310	1	NEEDLE, HIGH SPEED	Sr/Nr 010917 and after	

P a r t s L i s t

Group:Hedge Trimmers Model:HC-2300 Section:Carburetor(5)

Key	Lv	Part Number	Q'ty	Description	Remarks	Note
26	+	125318-42030	1	SCREW, IDLE NEEDLE	Sr/Nr 010916 and before	
26	+	125318-42030	1	SCREW, IDLE NEEDLE	Sr/Nr 010916 and before	
26	+	125318-13310	1	SCREW, IDLE NEEDLE	Sr/Nr 010917 to 011526	
26	+	125318-13310	1	SCREW, IDLE NEEDLE	Sr/Nr 010917 to 011526	
26	+	125318-13120	1	SCREW, IDLE NEEDLE	Sr/Nr 011527 and after	
26	+	125318-13120	1	SCREW, IDLE NEEDLE	Sr/Nr 011527 and after	
27	+	125314-13930	1	SCREW		
27	+	125314-13930	1	SCREW		
28	+	125316-07260	1	VALVE, THROTTLE	Sr/Nr 010916 and before	
28	+	125316-07260	1	VALVE, THROTTLE	Sr/Nr 010916 and before	
28	+	125316-49030	1	VALVE, THROTTLE	Sr/Nr 010917 and after	
28	+	125316-49030	1	VALVE, THROTTLE	Sr/Nr 010917 and after	
29	+	125345-15130	1	PLUG, WELCH		
29	+	125345-15130	1	PLUG, WELCH		
30	+	125306-13120	1	PUMP KIT, ACC.	Sr/Nr 010917 and after	
30	+	125306-13120	1	PUMP KIT, ACC.	Sr/Nr 010917 and after	
31	+	125333-06960	1	SPRING, IDLE ADJUSTER	Sr/Nr 016477 and after	
31	+	125333-06960	1	SPRING, IDLE ADJUSTER	Sr/Nr 016477 and after	
32	+	125345-13310	1	PLUG, WELCH		
32	+	125345-13310	1	PLUG, WELCH		
A		125303-13310	1	DIAPHRAGM/GASKET KIT		
A		125303-13310	1	DIAPHRAGM/GASKET KIT		
B		125300-13310	1	REBUILD KIT		
B		125300-13310	1	REBUILD KIT		

No.6



P a r t s L i s t

Group:Hedge Trimmers Model:HC-2300 Section:Handle(6)

Key	Lv	Part Number	Q'ty	Description	Remarks	Note
3		900560-00006	2	NUT, LOCK		
3		900560-00006	2	NUT, LOCK		
4		900603-00006	2	WASHER 6		
4		900603-00006	2	WASHER 6		
5		163400-05960	1	SWITCH, IGNITION		
5		163400-05960	1	SWITCH, IGNITION		
6		178013-35631	1	SPRING, THR. LOCK		
6		178013-35631	1	SPRING, THR. LOCK		
7		178012-05960	1	LOCKOUT, THROTTLE		
7		178012-05960	1	LOCKOUT, THROTTLE		
8		178010-05960	1	CONTROL, THROTTLE		
8		178010-05960	1	CONTROL, THROTTLE		
9		351102-47530	1	GRIP ASSY, F-HANDLE		
9		351102-47530	1	GRIP ASSY, F-HANDLE		
10	+	900500-00005	1	NUT 5		
10	+	900500-00005	1	NUT 5		
11	+	900220-05030	1	SCREW 5*30		
11	+	900220-05030	1	SCREW 5*30		
12	+	900246-03025	4	SCREW 3*25		
12	+	900246-03025	4	SCREW 3*25		
13		351200-07360	1	HANDLE ASSY	Sus. by 351200-07363	
13		351200-07360	1	HANDLE ASSY	Sus. by 351200-07363	
13		351200-07361	1	HANDLE ASSY	Sus. by 351200-07363	
13		351200-07361	1	HANDLE ASSY	Sus. by 351200-07363	
13		351200-07362	1	HANDLE ASSY	Sus. by 351200-07363	
13		351200-07362	1	HANDLE ASSY	Sus. by 351200-07363	
13		351200-07363	1	HANDLE ASSY		
13		351200-07363	1	HANDLE ASSY		

P a r t s L i s t

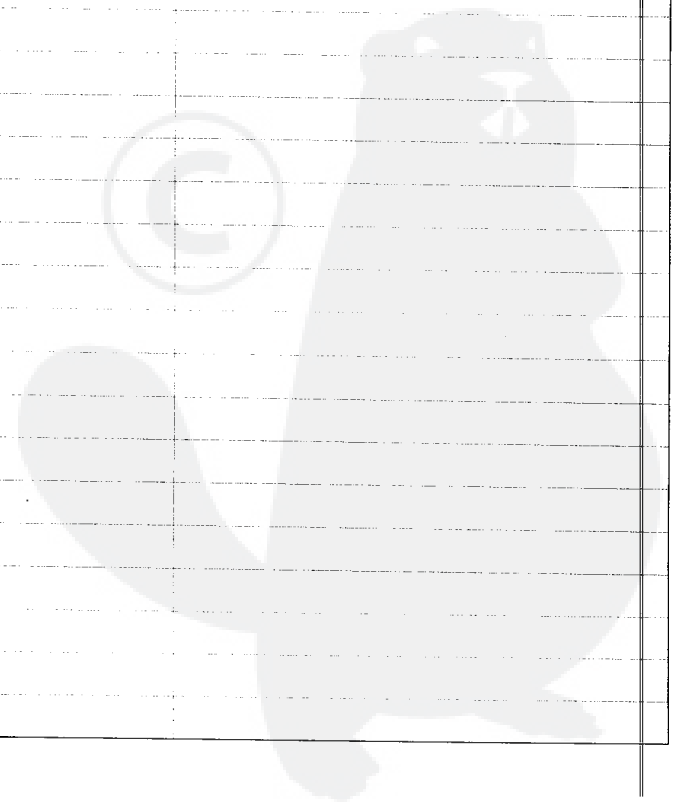
Group:Hedge Trimmers Model:HC-2300 Section:Handle(6)

Key	Lv	Part Number	Q'ty	Description	Remarks	Note
14	+	351012-07360	1	GRIP, HANDLE	Sus. by 351012-07361	
14	+	351012-07360	1	GRIP, HANDLE	Sus. by 351012-07361	
14	+	351012-07361	1	GRIP, HANDLE		
14	+	351012-07361	1	GRIP, HANDLE		
15	+	351217-07360	1	SUPPORTER, F. HANDLE		
15	+	351217-07360	1	SUPPORTER, F. HANDLE		
16	+	900253-05014	1	SCREW 5*14		
16	+	900253-05014	1	SCREW 5*14		
17		900560-00005	2	NUT, LOCK		
17		900560-00005	2	NUT, LOCK		
18		351243-01260	2	BRACKET		
18		351243-01260	2	BRACKET		
19		351228-01260	4	CUSHION		
19		351228-01260	4	CUSHION		
20		351241-01260	2	SPASER		
20		351241-01260	2	SPASER		
21		351217-05960	1	SUPPORTER, F.HANDLE		
21		351217-05960	1	SUPPORTER, F.HANDLE		
22		351242-01261	1	PLATE		
22		351242-01261	1	PLATE		
23		900105-05060	2	BOLT, H.S. 5*60		
23		900105-05060	2	BOLT, H.S. 5*60		
24		900242-05016	2	SCREW 5*16		
24		900242-05016	2	SCREW 5*16		
25		610438-01260	1	PLATE		
25		610438-01260	1	PLATE		
26		351205-08961	1	HANDLE, REAR		
26		351205-08961	1	HANDLE, REAR		

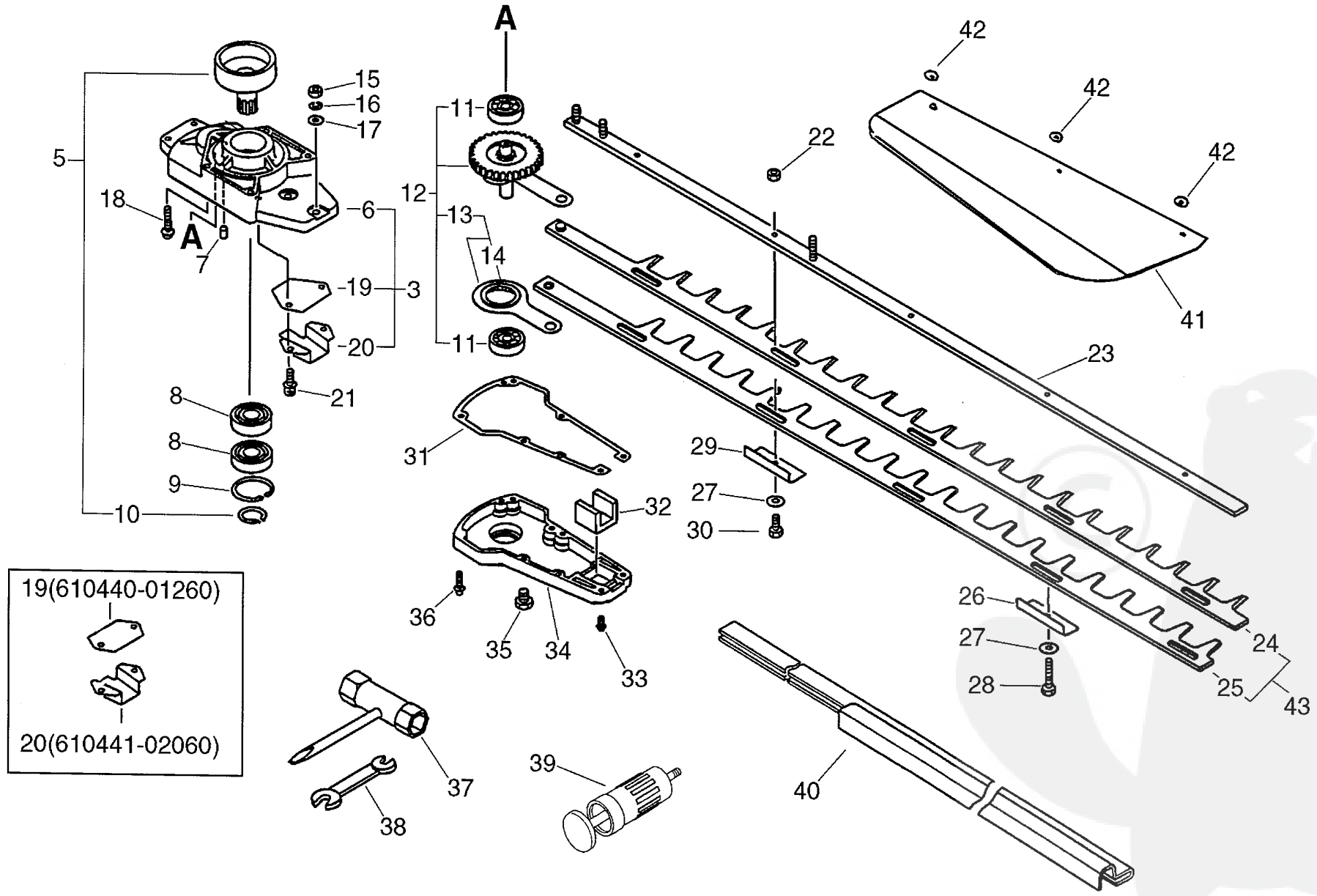
Parts List

Group:Hedge Trimmers Model:HC-2300 Section:Handle(6)

Key	Lv	Part Number	Q'ty	Description	Remarks	Note
27		178001-05960	1	WIRE, THROTTLE		
27		178001-05960	1	WIRE, THROTTLE		
28		178127-05960	1	TUBE		
28		178127-05960	1	TUBE		
29		900502-00006	2	NUT 6 (3N)		
29		900502-00006	2	NUT 6 (3N)		
30		900600-00006	2	WASHER 6		
30		900600-00006	2	WASHER 6		
31		900238-05010	1	SCREW 5*10		
31		900238-05010	1	SCREW 5*10		
32		178121-10050	1	BAND		
32		178121-10050	1	BAND		
33		890157-39130	1	LABEL, SWITCH	Disuse	
33		890157-39130	1	LABEL, SWITCH	Disuse	



No.7 (HC-2300)



Parts List

Group:Hedge Trimmers Model:HC-2300 Section:Gear Case(HC-2300), Cutter, Tools(7)

Key	Lv	Part Number	Q'ty	Description	Remarks	Note
5		175003-01261	1	DRUM W/CLIP, CLUTCH		
5		175003-01261	1	DRUM W/CLIP, CLUTCH		
10	+	900701-00016	1	CIRCLIP 16		
10	+	900701-00016	1	CIRCLIP 16		
6		610410-05960	1	HOUSING, GEAR	Sus. by 610406-05961	
6		610410-05960	1	HOUSING, GEAR	Sus. by 610406-05961	
3		610406-05960	1	CASE, GEAR	Sus. by 610406-05961	
3		610406-05960	1	CASE, GEAR	Sus. by 610406-05961	
3		610406-05961	1	CASE, GEAR		
3		610406-05961	1	CASE, GEAR		
6	+	610410-05961	1	CASE, GEAR	Sus. by 610410-05962	
6	+	610410-05961	1	CASE, GEAR	Sus. by 610410-05962	
6	+	610410-05962	1	CASE, GEAR	Added mark A	
6	+	610410-05962	1	CASE, GEAR	Added mark A	
7	+	100215-03930	1	PIN, DOWEL		
7	+	100215-03930	1	PIN, DOWEL		
19	+	610440-08960	1	GUIDE, CUTTER	Current	
19	+	610440-08960	1	GUIDE, CUTTER	Current	
20	+	610441-08960	1	GUIDE, CUTTER	Current	
20	+	610441-08960	1	GUIDE, CUTTER	Current	
8		900802-06003	2	BEARING, BALL 6003		
8		900802-06003	2	BEARING, BALL 6003		
9		900702-00035	1	CIRCLIP 35		
9		900702-00035	1	CIRCLIP 35		
12		610302-01260	1	GEAR ASY	Sus. by 610302-01261	
12		610302-01260	1	GEAR ASY	Sus. by 610302-01261	
12		610302-01261	1	GEAR ASY		
12		610302-01261	1	GEAR ASY		

P a r t s L i s t

Group:Hedge Trimmers Model:HC-2300 Section:Gear Case(HC-2300), Cutter, Tools(7)

Key	Lv	Part Number	Q'ty	Description	Remarks	Note
11	+	900810-06200	2	BEARING, BALL 6200		
11	+	900810-06200	2	BEARING, BALL 6200		
13	+	610307-01260	1	CON-ROD ASS'Y	Sus. by 610307-01261	
13	+	610307-01260	1	CON-ROD ASS'Y	Sus. by 610307-01261	
13	+	610307-01261	1	ROD, CONNECTING		
13	+	610307-01261	1	ROD, CONNECTING		
14	++	610327-01260	1	BEARING, NEEDLE	Sus. by 610327-01261	
14	++	610327-01260	1	BEARING, NEEDLE	Sus. by 610327-01261	
14	++	610327-01261	1	BEARING, NEEDLE		
14	++	610327-01261	1	BEARING, NEEDLE		
15		900500-00006	2	NUT 6		
15		900500-00006	2	NUT 6		
16		900605-00006	2	WASHER, SPRING 6		
16		900605-00006	2	WASHER, SPRING 6		
17		900600-00006	2	WASHER 6		
17		900600-00006	2	WASHER 6		
18		900242-05030	4	SCREW 5*30		
18		900242-05030	4	SCREW 5*30		
19		610440-01260	1	GUIDE	Former	
19		610440-01260	1	GUIDE	Former	
20		610441-02060	1	GUIDE	Former	
20		610441-02060	1	GUIDE	Former	
21		900162-05014	2	BOLT, H.S. 5*14		
21		900162-05014	2	BOLT, H.S. 5*14		
22		900560-00006	4	NUT, LOCK		
22		900560-00006	4	NUT, LOCK		
23		699105-02061	1	BAR, FRAME	Sus. by X425-000100	
23		699105-02061	1	BAR, FRAME	Sus. by X425-000100	

P a r t s L i s t

Group:Hedge Trimmers Model:HC-2300 Section:Gear Case(HC-2300), Cutter, Tools(7)

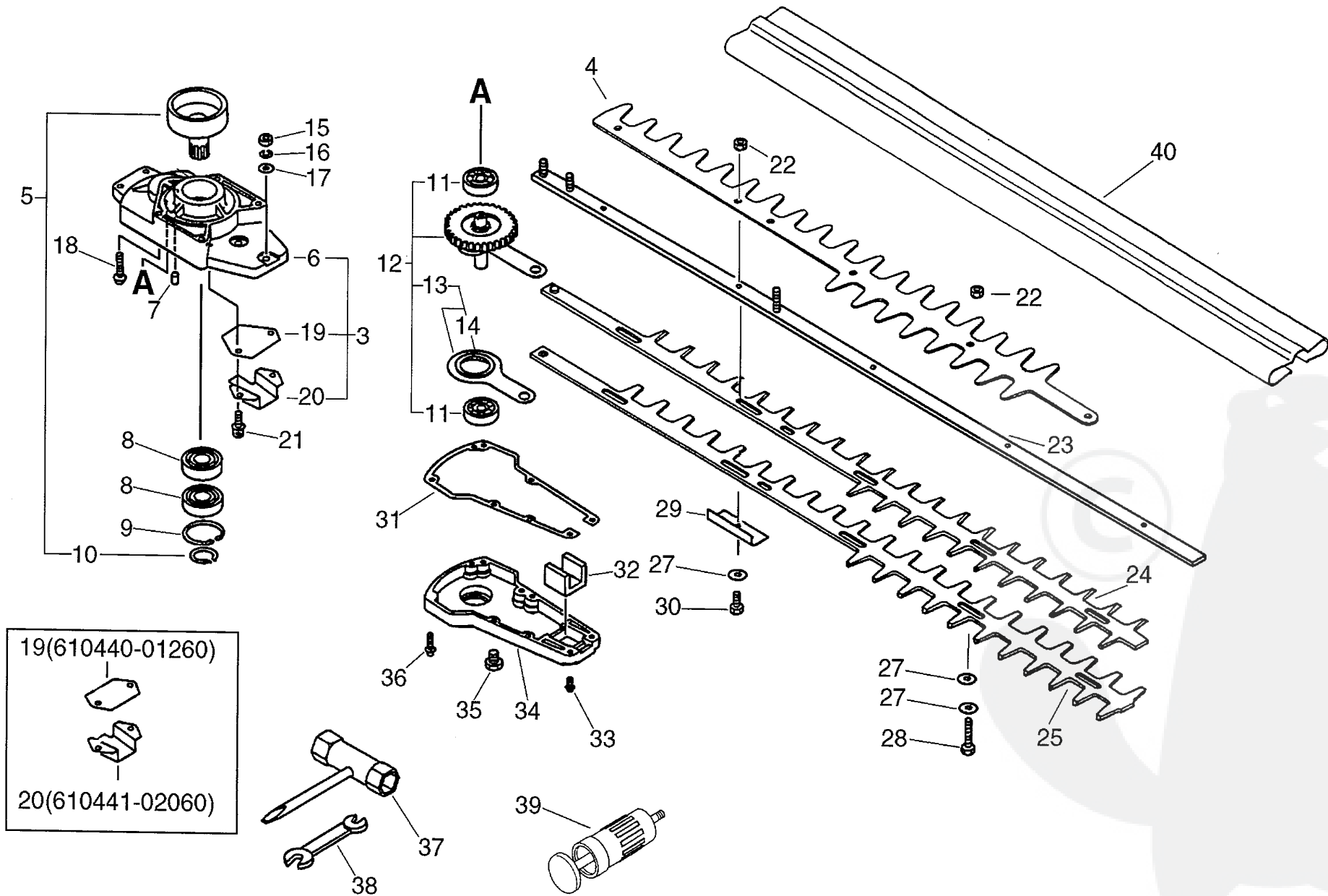
Key	Lv	Part Number	Q'ty	Description	Remarks	Note
23		699110-02062	1	SUPPORT, CUTTER	Sus. by X425-000100	
23		699110-02062	1	SUPPORT, CUTTER	Sus. by X425-000100	
23		X425-000100	1	SUPPORT,CUTTER		
23		X425-000100	1	SUPPORT,CUTTER		
43		697000-02060	1	CUTTER SET		
43		697000-02060	1	CUTTER SET		
24	+	697010-02060	1	CUTTER (UPPER)		
24	+	697010-02060	1	CUTTER (UPPER)		
25	+	697011-02060	1	CUTTER (LOWER)		
25	+	697011-02060	1	CUTTER (LOWER)		
26		699213-04160	4	INSULATOR		
26		699213-04160	4	INSULATOR		
27		699118-04160	5	WASHER		
27		699118-04160	5	WASHER		
28		699115-04160	4	BOLT		
28		699115-04160	4	BOLT		
29		699213-02062	1	INSULATOR	Sus. by 699213-02063	
29		699213-02062	1	INSULATOR	Sus. by 699213-02063	
29		699213-02063	1	INSULATOR		
29		699213-02063	1	INSULATOR		
30		351027-02060	1	BOLT		
30		351027-02060	1	BOLT		
31		610414-01260	1	GASKET, GEAR HOUSING		
31		610414-01260	1	GASKET, GEAR HOUSING		
32		610426-01260	1	SEAL		
32		610426-01260	1	SEAL		
33		900242-04014	4	SCREW 4*14		
33		900242-04014	4	SCREW 4*14		

Parts List

Group:Hedge Trimmers Model:HC-2300 Section:Gear Case(HC-2300), Cutter, Tools(7)

Key	Lv	Part Number	Q'ty	Description	Remarks	Note
34		610411-05960	1	LID,GEARE CASE	Sus. by 610411-05961	
34		610411-05960	1	LID,GEARE CASE	Sus. by 610411-05961	
34		610411-05961	1	CASE, GEAR		
34		610411-05961	1	CASE, GEAR		
35		610434-50030	1	BOLT 8* 6	Sus. by 610434-50031	
35		610434-50030	1	BOLT 8* 6	Sus. by 610434-50031	
35		610434-50031	1	BOLT 8* 8		
35		610434-50031	1	BOLT 8* 8		
36		900242-04022	2	SCREW 4*22		
36		900242-04022	2	SCREW 4*22		
37		895410-00430	1	WRENCH, W/S. DRIVER		
37		895410-00430	1	WRENCH, W/S. DRIVER		
38		895112-00330	1	SPANNER 8*10		
38		895112-00330	1	SPANNER 8*10		
39		880300-01260	1	PUMP ASS'Y, GREASE		
39		880300-01260	1	PUMP ASS'Y, GREASE		
40		898523-02961	1	COVER, CUTTER		
40		898523-02961	1	COVER, CUTTER		
41		699511-07360	1	GUIDE, CORRECTION		
41		699511-07360	1	GUIDE, CORRECTION		
42		900603-00006	3	WASHER 6		
42		900603-00006	3	WASHER 6		

No.8 (HC-2300W)



Parts List

Group:Hedge Trimmers Model:HC-2300 Section:Gear Case(HC-2300W), Cutter, Tools(8)

Key	Lv	Part Number	Q'ty	Description	Remarks	Note
4		699125-07360	1	BLUNT		
4		699125-07360	1	BLUNT		
5		175003-01261	1	DRUM W/CLIP, CLUTCH		
5		175003-01261	1	DRUM W/CLIP, CLUTCH		
10	+	900701-00016	1	CIRCLIP 16		
10	+	900701-00016	1	CIRCLIP 16		
6		610410-05960	1	HOUSING, GEAR	Sus. by 610406-05961	
6		610410-05960	1	HOUSING, GEAR	Sus. by 610406-05961	
3		610406-05960	1	CASE, GEAR	Sus. by 610406-05961	
3		610406-05960	1	CASE, GEAR	Sus. by 610406-05961	
3		610406-05961	1	CASE, GEAR		
3		610406-05961	1	CASE, GEAR		
6	+	610410-05961	1	CASE, GEAR	Sus. by 610410-05962	
6	+	610410-05961	1	CASE, GEAR	Sus. by 610410-05962	
6	+	610410-05962	1	CASE, GEAR	Added mark A	
6	+	610410-05962	1	CASE, GEAR	Added mark A	
7	+	100215-03930	1	PIN, DOWEL		
7	+	100215-03930	1	PIN, DOWEL		
19	+	610440-08960	1	GUIDE,CUTTER	Current	
19	+	610440-08960	1	GUIDE,CUTTER	Current	
20	+	610441-08960	1	GUIDE,CUUTER	Current	
20	+	610441-08960	1	GUIDE,CUUTER	Current	
8		900802-06003	2	BEARING, BALL 6003		
8		900802-06003	2	BEARING, BALL 6003		
9		900702-00035	1	CIRCLIP 35		
9		900702-00035	1	CIRCLIP 35		
12		610302-01260	1	GEAR ASY	Sus. by 610302-01261	
12		610302-01260	1	GEAR ASY	Sus. by 610302-01261	

P a r t s L i s t

Group:Hedge Trimmers Model:HC-2300 Section:Gear Case(HC-2300W), Cutter, Tools(8)

Key	Lv	Part Number	Q'ty	Description	Remarks	Note
12		610302-01261	1	GEAR ASY		
12		610302-01261	1	GEAR ASY		
11	+	900810-06200	2	BEARING, BALL 6200		
11	+	900810-06200	2	BEARING, BALL 6200		
13	+	610307-01260	1	CON-ROD ASS'Y	Sus. by 610307-01261	
13	+	610307-01260	1	CON-ROD ASS'Y	Sus. by 610307-01261	
13	+	610307-01261	1	ROD, CONNECTING		
13	+	610307-01261	1	ROD, CONNECTING		
14	++	610327-01260	1	BEARING, NEEDLE	Sus. by 610327-01261	
14	++	610327-01260	1	BEARING, NEEDLE	Sus. by 610327-01261	
14	++	610327-01261	1	BEARING, NEEDLE		
14	++	610327-01261	1	BEARING, NEEDLE		
15		900500-00006	2	NUT 6		
15		900500-00006	2	NUT 6		
16		900605-00006	2	WASHER, SPRING 6		
16		900605-00006	2	WASHER, SPRING 6		
17		900600-00006	2	WASHER 6		
17		900600-00006	2	WASHER 6		
18		900242-05030	4	SCREW 5*30		
18		900242-05030	4	SCREW 5*30		
19		610440-01260	1	GUIDE	Former	
19		610440-01260	1	GUIDE	Former	
20		610441-02060	1	GUIDE	Former	
20		610441-02060	1	GUIDE	Former	
21		900162-05014	2	BOLT, H.S. 5*14		
21		900162-05014	2	BOLT, H.S. 5*14		
22		900560-00006	4	NUT, LOCK		
22		900560-00006	4	NUT, LOCK		

Parts List

Group:Hedge Trimmers Model:HC-2300 Section:Gear Case(HC-2300W), Cutter, Tools(8)

Key	Lv	Part Number	Q'ty	Description	Remarks	Note
23		699105-02061	1	BAR, FRAME	Sus. by X425-000100	
23		699105-02061	1	BAR, FRAME	Sus. by X425-000100	
23		699110-02062	1	SUPPORT, CUTTER	Sus. by X425-000100	
23		699110-02062	1	SUPPORT, CUTTER	Sus. by X425-000100	
23		X425-000100	1	SUPPORT, CUTTER		
23		X425-000100	1	SUPPORT, CUTTER		
24		697010-07360	1	CUTTER	Sus. by 697010-07361	
24		697010-07360	1	CUTTER	Sus. by 697010-07361	
24		697010-07361	1	CUTTER		
24		697010-07361	1	CUTTER		
25		697011-07360	1	CUTTER	Sus. by 697011-07361	
25		697011-07360	1	CUTTER	Sus. by 697011-07361	
25		697011-07361	1	CUTTER		
25		697011-07361	1	CUTTER		
27		699118-04160	9	WASHER		
27		699118-04160	9	WASHER		
28		699115-04160	4	BOLT		
28		699115-04160	4	BOLT		
29		699213-02062	1	INSULATOR	Sus. by 699213-02063	
29		699213-02062	1	INSULATOR	Sus. by 699213-02063	
29		699213-02063	1	INSULATOR		
29		699213-02063	1	INSULATOR		
30		351027-02060	1	BOLT		
30		351027-02060	1	BOLT		
31		610414-01260	1	GASKET, GEAR HOUSING		
31		610414-01260	1	GASKET, GEAR HOUSING		
32		610426-01260	1	SEAL		
32		610426-01260	1	SEAL		

Parts List

Group:Hedge Trimmers Model:HC-2300 Section:Gear Case(HC-2300W), Cutter, Tools(8)

Key	Lv	Part Number	Q'ty	Description	Remarks	Note
33		900242-04014	4	SCREW 4*14		
33		900242-04014	4	SCREW 4*14		
34		610411-05960	1	LID,GEARE CASE	Sus. by 610411-05961	
34		610411-05960	1	LID,GEARE CASE	Sus. by 610411-05961	
34		610411-05961	1	CASE, GEAR		
34		610411-05961	1	CASE, GEAR		
35		610434-50030	1	BOLT 8* 6	Sus. by 610434-50031	
35		610434-50030	1	BOLT 8* 6	Sus. by 610434-50031	
35		610434-50031	1	BOLT 8* 8		
35		610434-50031	1	BOLT 8* 8		
36		900242-04022	2	SCREW 4*22		
36		900242-04022	2	SCREW 4*22		
37		895410-00430	1	WRENCH, W/S. DRIVER		
37		895410-00430	1	WRENCH, W/S. DRIVER		
38		895112-00330	1	SPANNER 8*10		
38		895112-00330	1	SPANNER 8*10		
39		880300-01260	1	PUMP ASS'Y, GREASE		
39		880300-01260	1	PUMP ASS'Y, GREASE		
40		898523-05160	1	COVER, CUTTER		
40		898523-05160	1	COVER, CUTTER		