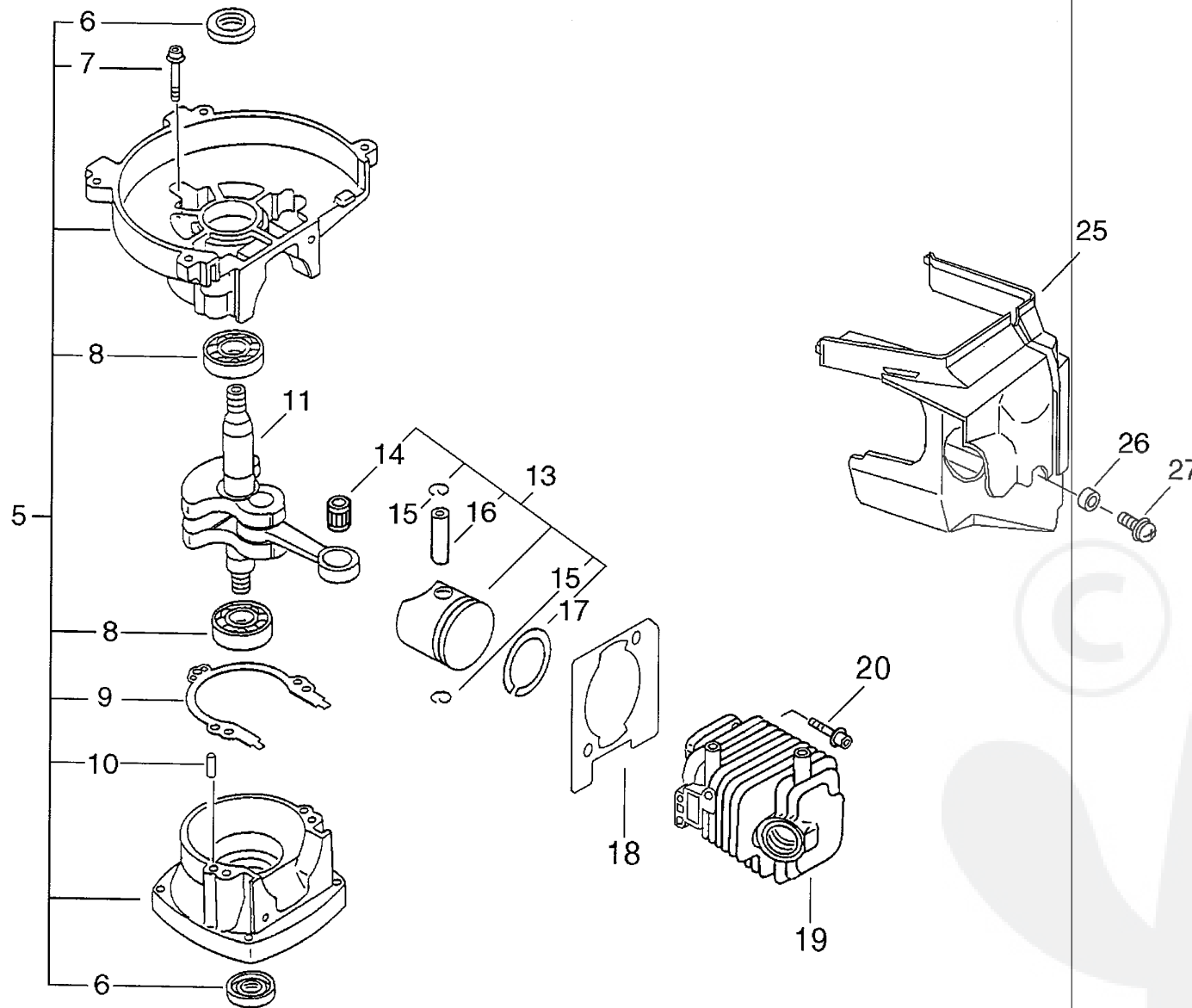


Parts List

Group:Hedge Trimmers Model:HC-30ESW(35)(36) Section:Cylinder, Crankcase, Piston(Sr/Nr 36002135 and before)(1)

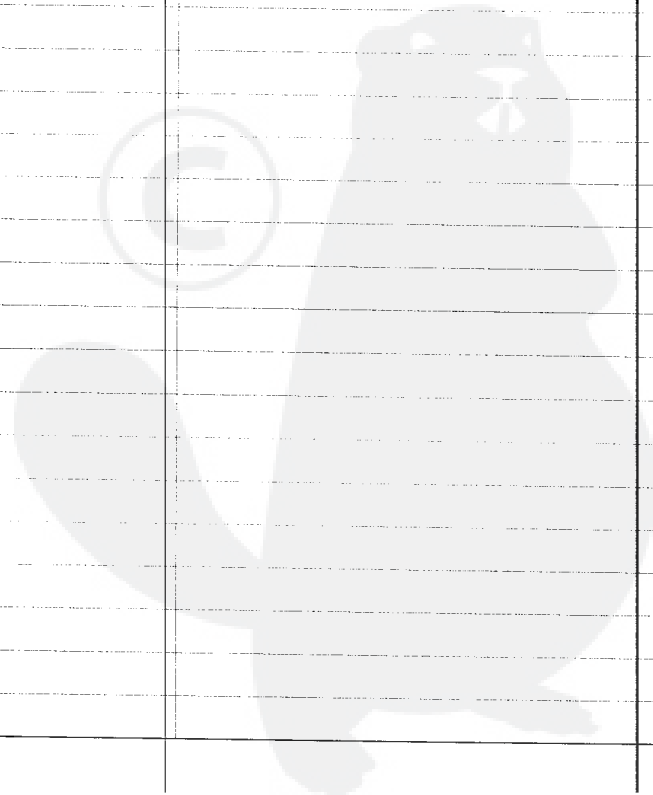
Key	Lv	Part Number	Q'ty	Description	Remarks	Note
5		P021-003941	1	CRANK CASE SET		
6	+	100212-61830	2	OILSEAL		
7	+	900162-05025	3	BOLT, H.S. 5*25		
8	+	900810-36000	2	BEARING, BALL		
9	+	100242-61830	1	GASKET, CRANKCASE		
10	+	100215-03930	2	PIN, DOWEL		
11		A011-000180	1	CRANKSHAFT, ASM		
13		100000-61830	1	PISTON KIT	Sr/Nr 35001360 and before	
13		P021-008710	1	PISTON KIT	Sr/Nr 36001001 and after	
14	+	100012-61830	1	BEARING, NEEDLE		
15	+	100015-61830	2	RING, SNAP		
16	+	100013-61830	1	PIN, PISTON		
17	+	100011-05330	1	RING, PISTON	Sr/Nr 35001360 and before	
17	+	A101-000090	1	RING, PISTON	Sr/Nr 36001001 and after	
18		101010-61830	1	GASKET, CYL. BASE	Sr/Nr 35001360 and before	
18		V100-000120	1	GASKET, CYL	Sr/Nr 36001001 and after	
19		101011-61831	1	CYLINDER	Sr/Nr 35001360 and before	
19		A130-000610	1	CYLINDER	Sr/Nr 36001001 to 36001150	
19		A130-000611	1	CYLINDER	Sr/Nr 36001151 and after	
20		900162-05020	2	BOLT, H.S. 5*20		
25		A160-000380	1	COVER, CYLINDER		
26		150117-16430	1	SPACER	Sus. by V323-000060	
27		900239-05018	1	SCREW 5*18		

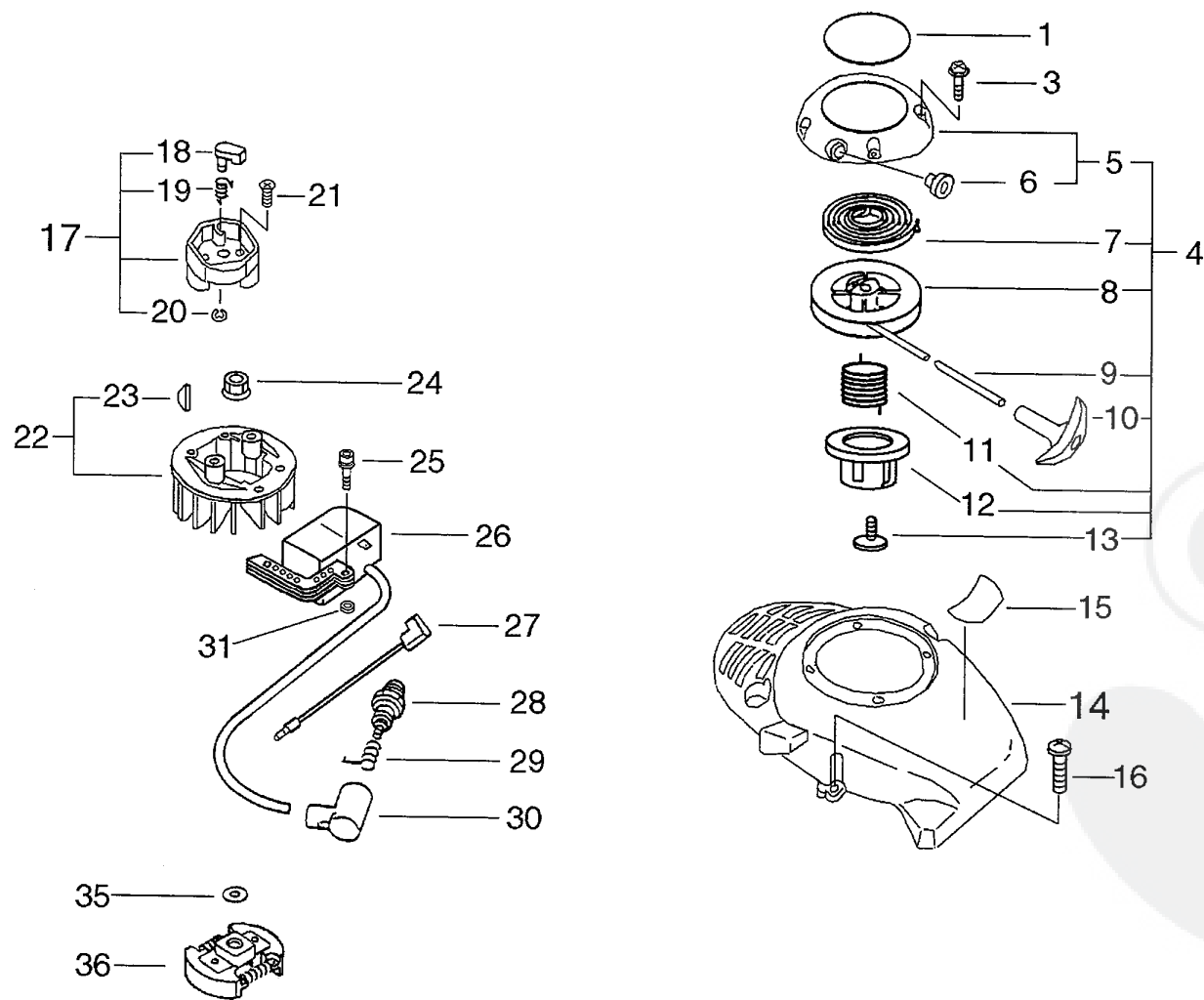


Parts List

Group:Hedge Trimmers Model:HC-30ESW(35)(36) Section:Cylinder, Crankcase, Piston(Sr/Nr 36002136 and after)(2)

Key	Lv	Part Number	Q'ty	Description	Remarks	Note
5		P021-003941	1	CRANK CASE SET		
6	+	100212-61830	2	OILSEAL		
7	+	900162-05025	3	BOLT, H.S. 5*25		
8	+	900810-36000	2	BEARING, BALL		
9	+	100242-61830	1	GASKET, CRANKCASE		
10	+	100215-03930	2	PIN, DOWEL		
11		A011-000180	1	CRANKSHAFT, ASM		
13		P021-008710	1	PISTON KIT		
14	+	100012-61830	1	BEARING, NEEDLE		
15	+	100015-61830	2	RING, SNAP		
16	+	100013-61830	1	PIN, PISTON		
17	+	A101-000090	1	RING, PISTON		
18		V100-000120	1	GASKET, CYL		
19		A130-000611	1	CYLINDER		
20		900162-05020	2	BOLT, H.S. 5*20		
25		A160-000380	1	COVER, CYLINDER		
26		V323-000060	1	WASHER, CIRCULAR 5		
27		900239-05018	1	SCREW 5*18		





P a r t s L i s t

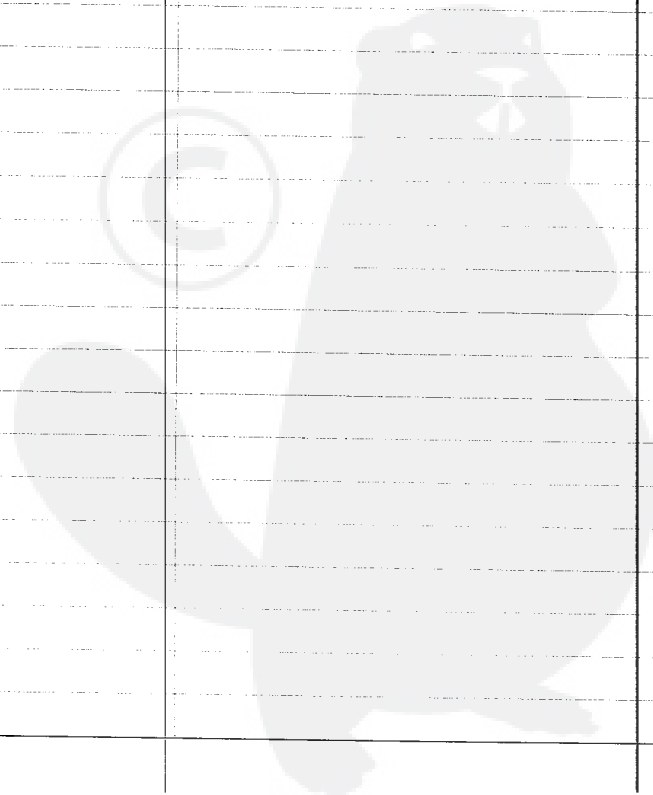
Group:Hedge Trimmers Model:HC-30ESW(35)(36) Section:Starter, Magneto, Clutch(Sr/Nr 36002135 and before)(3)

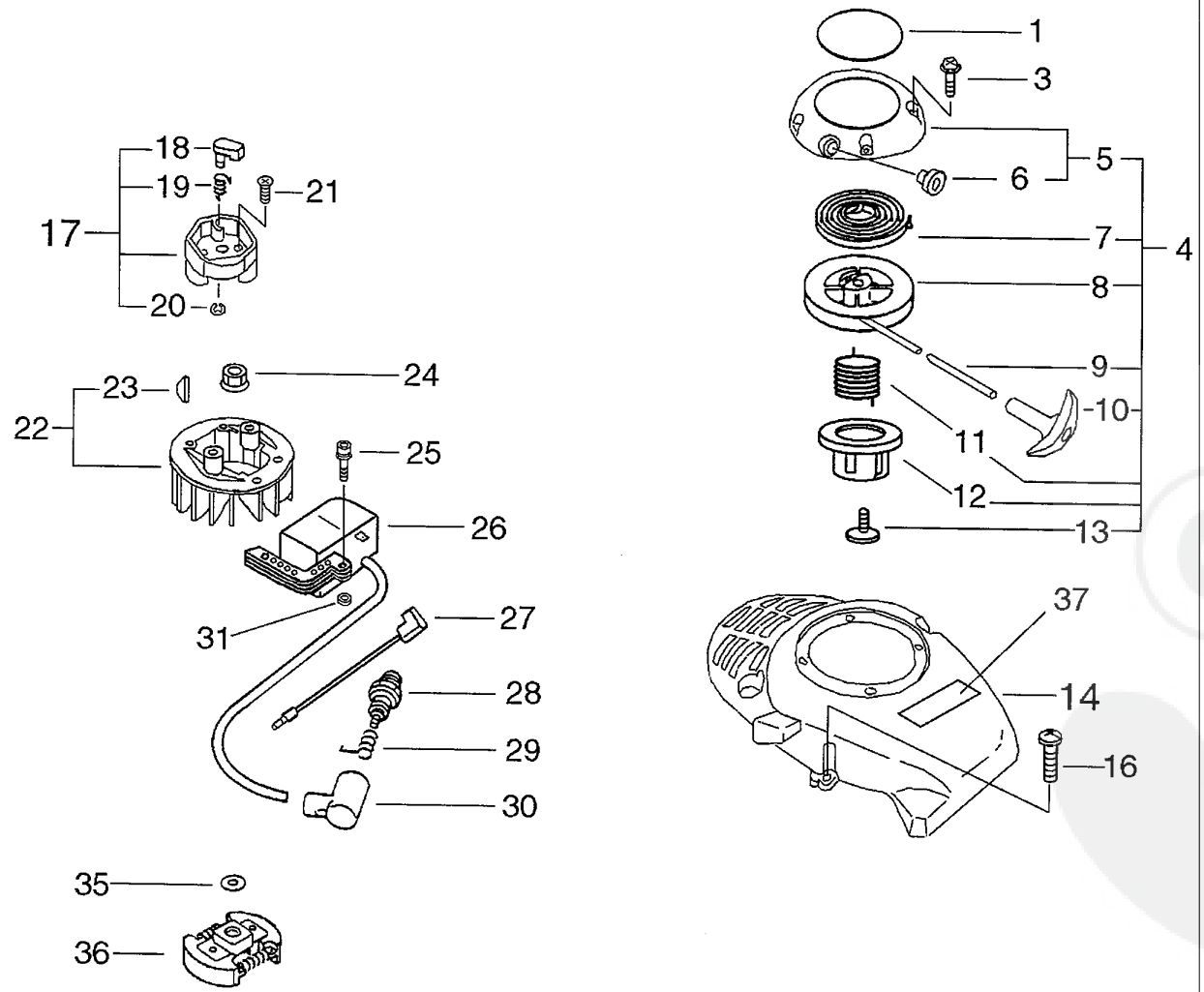
Key	Lv	Part Number	Q'ty	Description	Remarks	Note
1		X502-000140	1	LABEL,ECHO	Sus. by X547-000220	
1		X547-000220	1	LABEL,ECHO	Sus. by X502-000330	
3		900253-05020	2	SCREW 5*20		
4		P022-007740	1	STARTER ASY		
5	+	P022-006840	1	STARTER, RECOIL		
6	++	177227-42030	1	GUIDE, ROPE		
7	+	177220-42030	1	SPRING, REWIND		
8	+	P022-006830	1	DRUM		
9	+	P022-006800	1	ROPE, STARTER		
10	+	177228-44330	1	GRIP, STARTER		
11	+	V452-000150	1	SPRING, TORSION		
12	+	A507-000030	1	CATCHER, PAWL		
13	+	177236-61830	1	SCREW		
14		A172-000250	1	COVER, FAN		
15		X503-005270	1	LABEL, MODEL	Sr/Nr 36001570 and before	
16		900239-05016	4	SCREW 5*16		
17		A052-000170	1	PULLEY, ASM STARTER		
18	+	P022-006850	2	PAWL, STARTER		
19	+	177234-05960	2	SPRING, RETURN		
20	+	P022-002100	2	E-RING		
21		900212-06014	2	SCREW 6*14		
22		P021-003340	1	ROTOR, MAGNETO W/KEY		
23	+	100142-12330	1	KEY, WOODRUFF		
24		900515-00006	1	NUT, FLANGE 6		
25		900162-04020	2	BOLT, H.S. 4*20	Sr/Nr 36001150 and before	
25		91128-04022	2	BOLT HSH	Sr/Nr 36001151 and after	
26		A411-000100	1	COIL, IGNITION		
27		162010-55930	1	LEARD, GROUND		

Parts List

Group:Hedge Trimmers Model:HC-30ESW(35)(36) Section:Starter, Magneto, Clutch(Sr/Nr 36002135 and before)(3)

Key	Lv	Part Number	Q'ty	Description	Remarks	Note
28		159010-10230	1	PLUG, SPARK (BPMR-7A		
29		159011-03432	1	COIL, SPARK PLUG CAP		
30		159012-03433	1	CAP, SPARK PLUG		
31		150117-09130	1	SPACER	Sr/Nr 36001151 and after	
35		610350-12360	1	WASHER		
36		A056-000090	1	CLUTCH	Sus. by A056-000091	



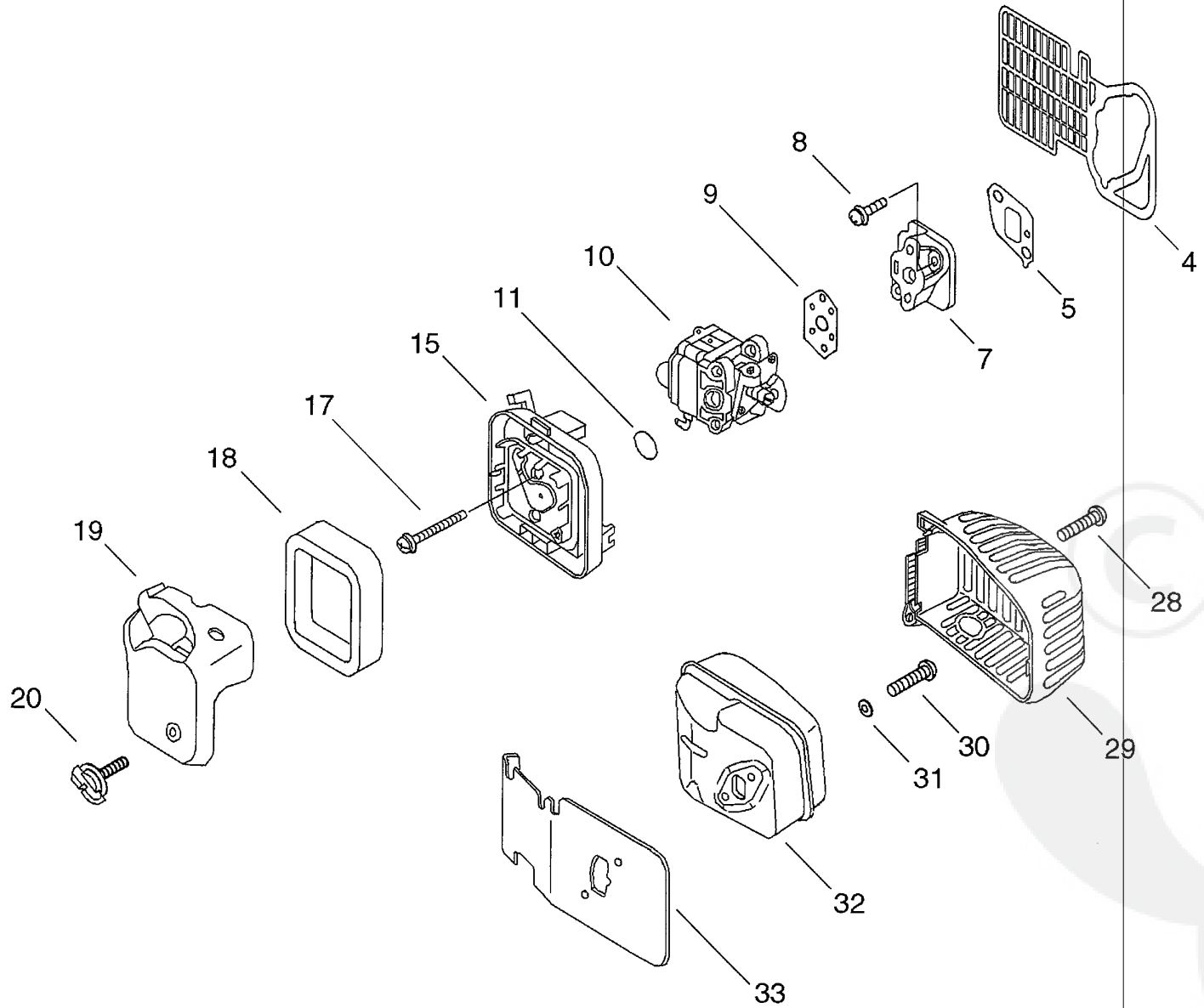


P a r t s L i s t

Date:15/09/2010 Page: 1

Group:Hedge Trimmers Model:HC-30ESW(35)(36) Section:Starter, Magneto, Clutch(Sr/Nr 36002136 and after) (4)

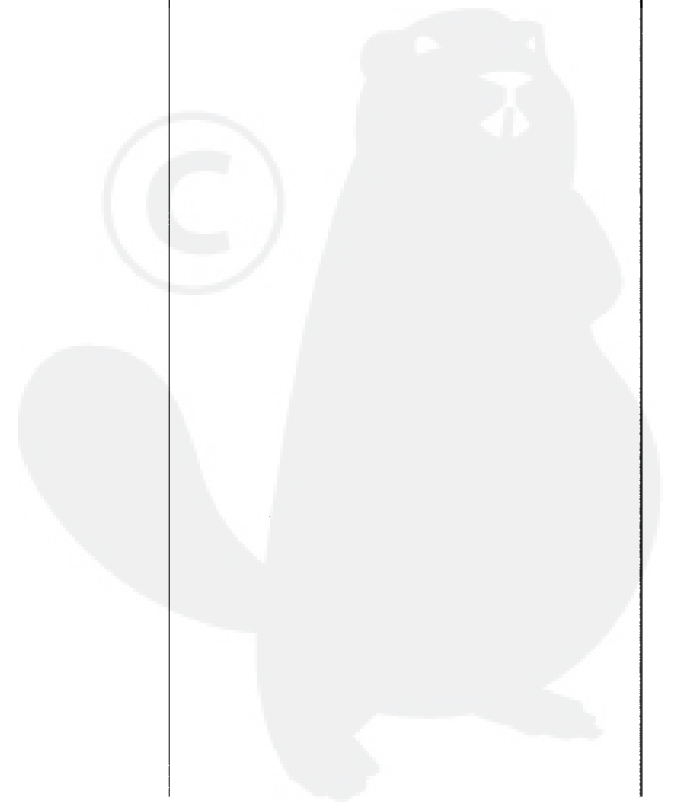
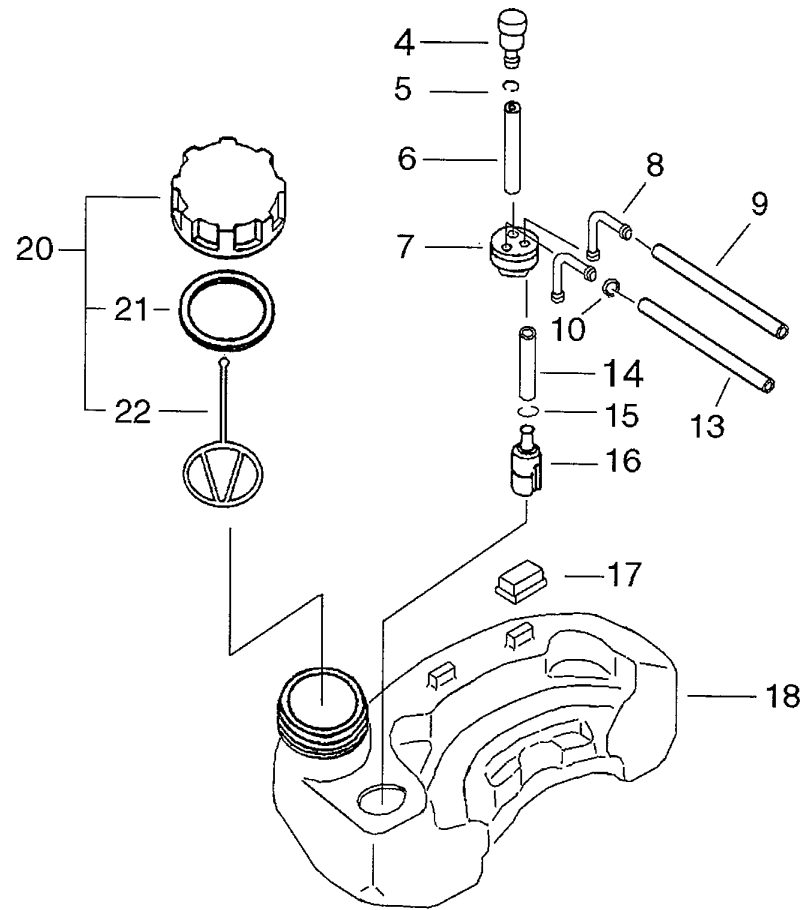
Key	Lv	Part Number	Q'ty	Description	Remarks	Note
1		X547-000220	1	LABEL,ECHO	Sus. by X502-000330	
1		X502-000330	1	LABEL,ECHO		
3		900253-05020	2	SCREW 5*20		
4		P022-007740	1	STARTER ASY		
5	+	P022-006840	1	STARTER,RECOIL		
6	++	177227-42030	1	GUIDE, ROPE		
7	+	177220-42030	1	SPRING, REWIND		
8	+	P022-006830	1	DRUM		
9	+	P022-006800	1	ROPE, STARTER		
10	+	177228-44330	1	GRIP, STARTER		
11	+	V452-000150	1	SPRING,TORSION		
12	+	A507-000030	1	CATCHER, PAWL		
13	+	177236-61830	1	SCREW		
14		A172-000250	1	COVER, FAN		
16		900239-05016	4	SCREW 5*16		
17		A052-000170	1	PULLEY,ASM STARTER		
18	+	P022-006850	2	PAWL, STARTER		
19	+	177234-05960	2	SPRING, RETURN		
20	+	P022-002100	2	E-RING		
21		900212-06014	2	SCREW 6*14		
22		P021-003340	1	ROTOR,MAGNETO W/KEY		
23	+	100142-12330	1	KEY, WOODRUFF		
24		900515-00006	1	NUT, FLANGE 6		
25		91128-04022	2	BOLT HSH		
26		A411-000100	1	COIL,IGNITION		
27		162010-55930	1	LEARD, GROUND		
28		159010-10230	1	PLUG, SPARK (BPMR-7A		
29		159011-03432	1	COIL, SPARK PLUG		



Parts List

Group:Hedge Trimmers Model:HC-30ESW(35)(36) Section:Air Cleaner, Muffler(5)

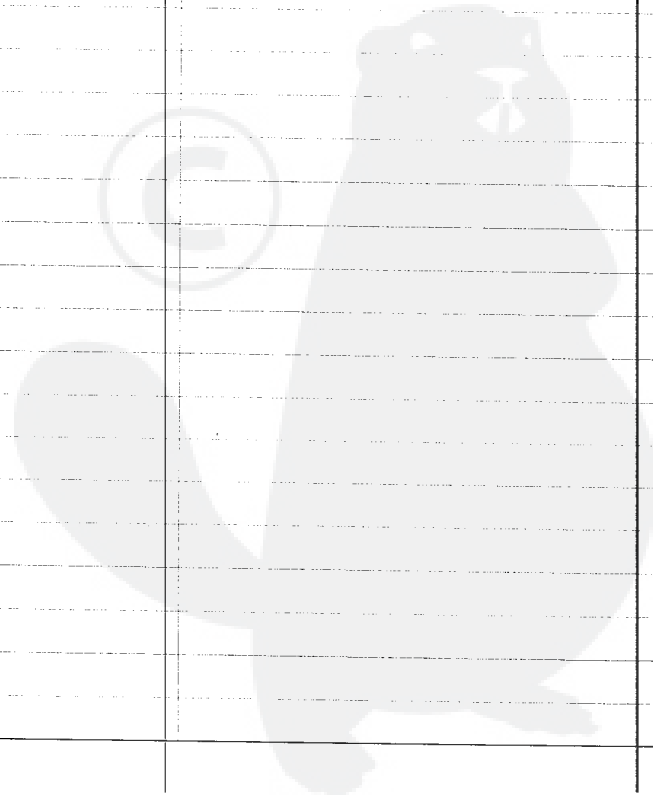
Key	Lv	Part Number	Q'ty	Description	Remarks	Note
4		A128-000010	1	PLATE, DUST		
5		130010-61830	1	GASKET, INTAKE		
7		A200-000080	1	INSULATOR, INTAKE		
8		900238-05020	2	SCREW 5*20		
9		130010-44431	1	GASKET, INTAKE		
10		A021-000690	1	CARBURETOR, DIAPHRAGM	Sus. by A021-000691	
10		A021-000691	1	CARBURETOR, DIAPHRAGM		
11		900720-00015	1	O-RING 15		
15		P021-006130	1	CASE, AIR CLEANER		
17		900242-05050	2	SCREW 5*50		
18		A226-000130	1	ELEMENT, AIR FILTER		
19		A232-000130	1	LID, CLEANER		
20		V299-000190	1	KNOB, FASTENER		
28		900239-05016	1	SCREW 5*16		
29		A320-000121	1	COVER, MUFFLER		
30		900105-05050	2	BOLT, H.S. 5*50		
31		900600-00005	2	WASHER 5		
32		A300-000300	1	MUFFLER, EXHAUST	Sr/Nr 35001360 and before	
32		P021-008700	1	MUFFLER ASY	Sr/Nr 36001001 and after	
33		145510-61831	1	GASKET, MUFFLER	Sus. by 145510-61832	
33		145510-61832	1	GASKET, MUFFLER		

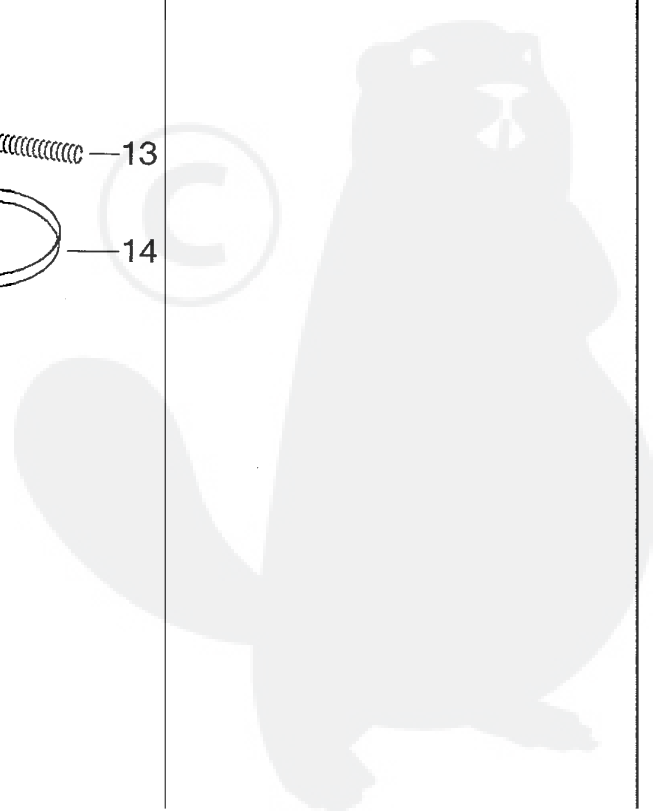
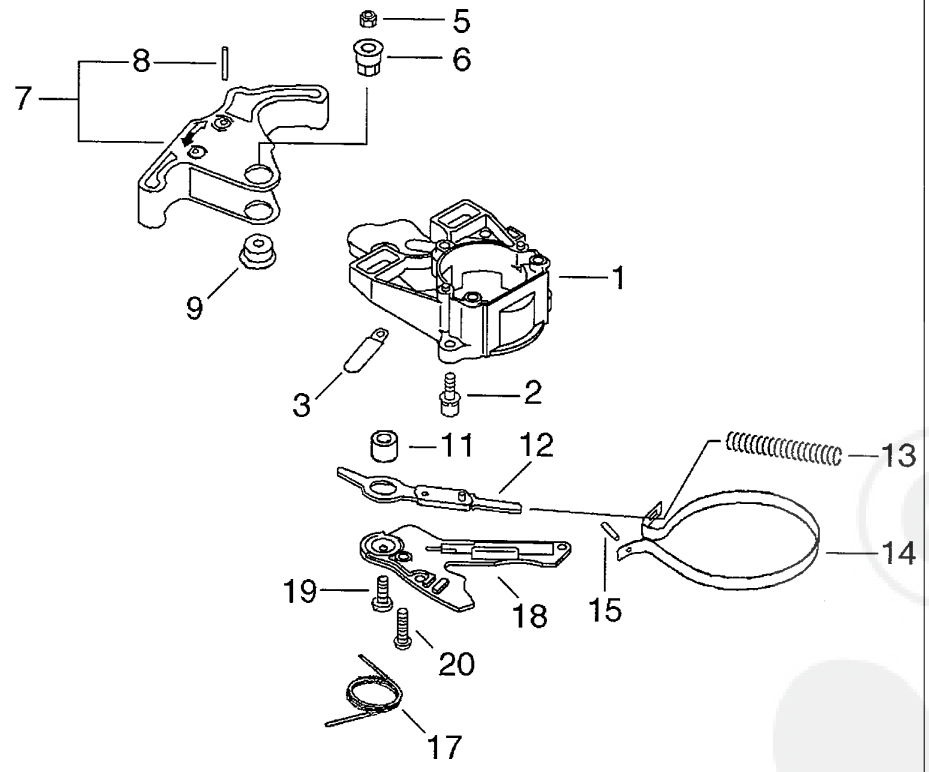


Parts List

Group:Hedge Trimmers Model:HC-30ESW(35)(36) Section:Fuel Tank(6)

Key	Lv	Part Number	Q'ty	Description	Remarks	Note
4		131300-56430	1	VALVE, CHECK		
5		132013-26630	1	CLIP		
6		132012-11960	1	PIPE 3* 6* 45		
7		132115-55930	1	GROMMET, FUEL		
8		V186-000080	2	JOINT, PIPE		
9		130110-54430	1	PIPE, IMPULSE		
10		132013-26630	1	CLIP		
13		V471-000630	1	PIPE		
14		132010-52830	1	PIPE		
15		132013-09820	1	CLIP		
16		131205-19830	1	STRAINER, FUEL	Sus. by 131205-19831	
17		131920-55430	4	CUSHION, FUEL TANK		
18		A350-000191	1	TANK, FUEL		
20		131004-55530	1	CAP ASSY, FUEL TANK		
21	+	131016-55830	1	GASKET, FUEL CAP		
22	+	131051-56030	1	CLIP, FUEL CAP		

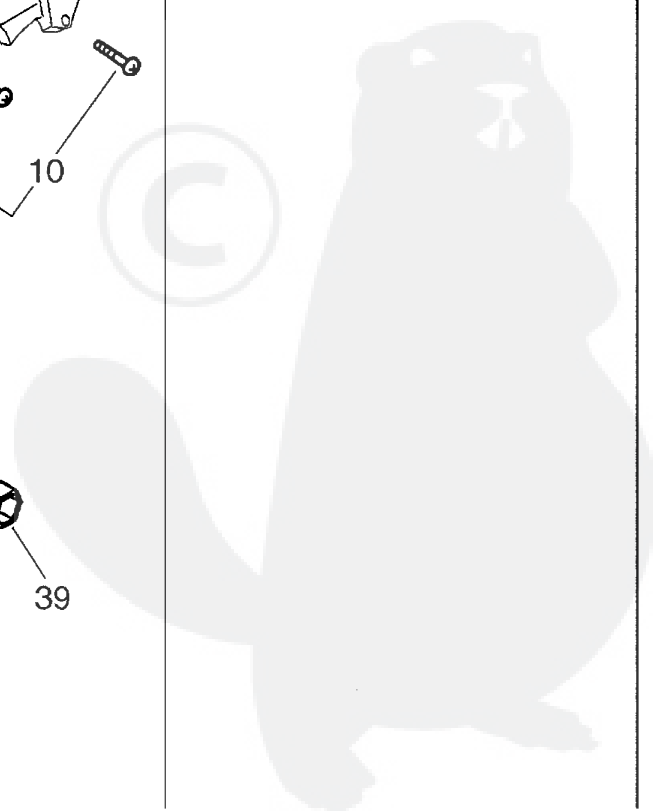
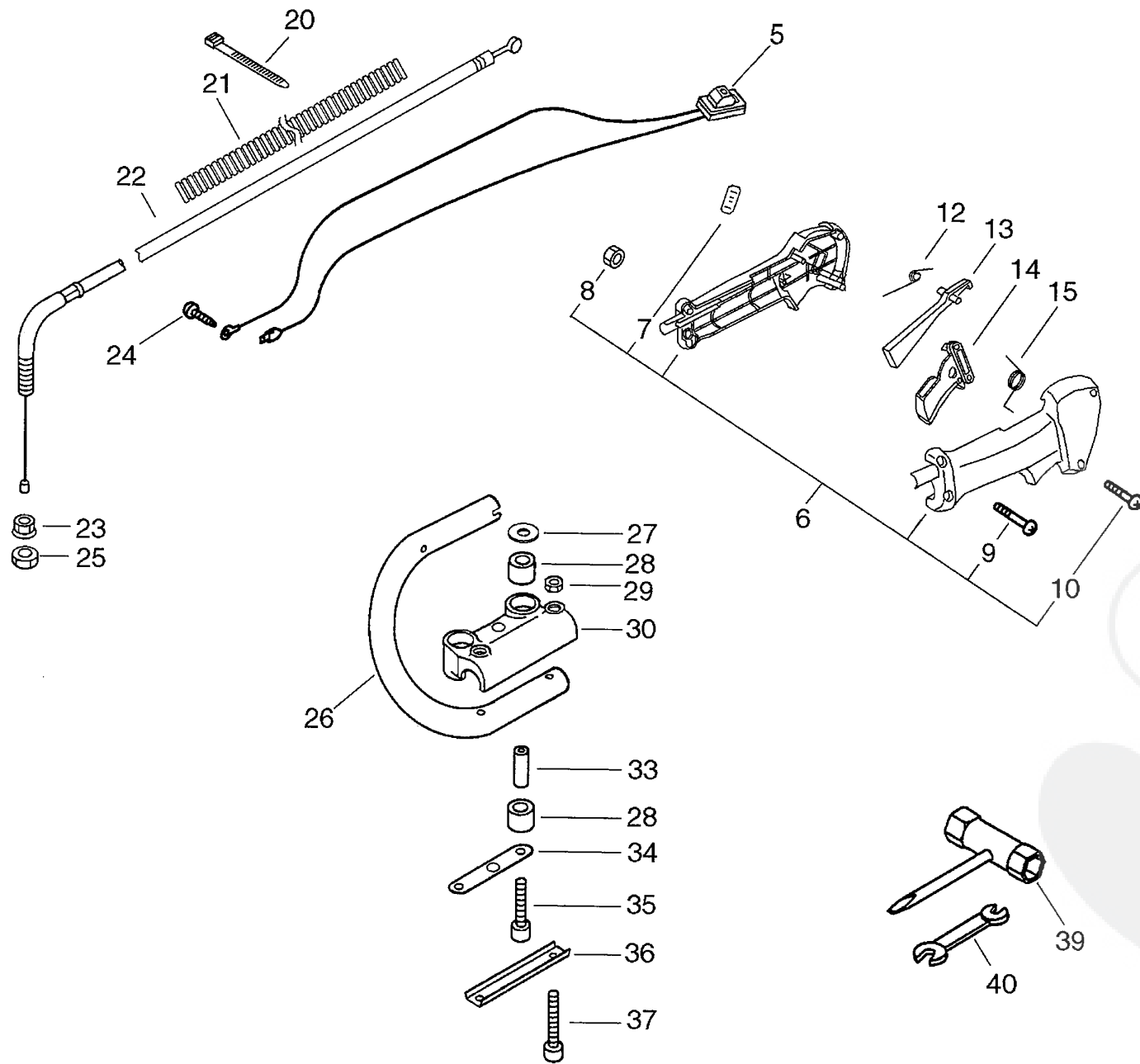




P a r t s L i s t

Group:Hedge Trimmers Model:HC-30ESW(35)(36) Section:Brake(7)

Key	Lv	Part Number	Q'ty	Description	Remarks	Note
1		A570-000110	1	CASE, CLUTCH	Sus. by A570-000111	
1		A570-000111	1	CASE, CLUTCH		
2		900238-05016	3	SCREW 5*16		
3		159116-21231	1	CLAMP		
5		900560-00005	1	NUT, LOCK 5		
6		V353-000060	1	COLLAR, 5		
7		P021-006410	1	LEVER, BRAKE		
8 +		900330-30240	2	PIN 3*24		
9		433167-39130	1	SPACER		
11		433116-35430	1	SPACER 8		
12		C334-000040	1	CONNECTOR, BRAKE	Sus. by C334-000041	
12		C334-000041	1	CONNECTOR, BRAKE		
13		V450-000380	1	SPRING, COMPRESSION		
14		C328-000040	1	BAND, BRAKE		
15		93050-30098	1	ROLLER		
17		V452-000180	1	SPRING, TORSION		
18		C345-000131	1	COVER, BRAKE		
19		91335-04010	3	SCREW	Sus. by 900220-04010	
19		900220-04010	3	SCREW 4*10		
20		900209-05030	1	SCREW, 5*30		

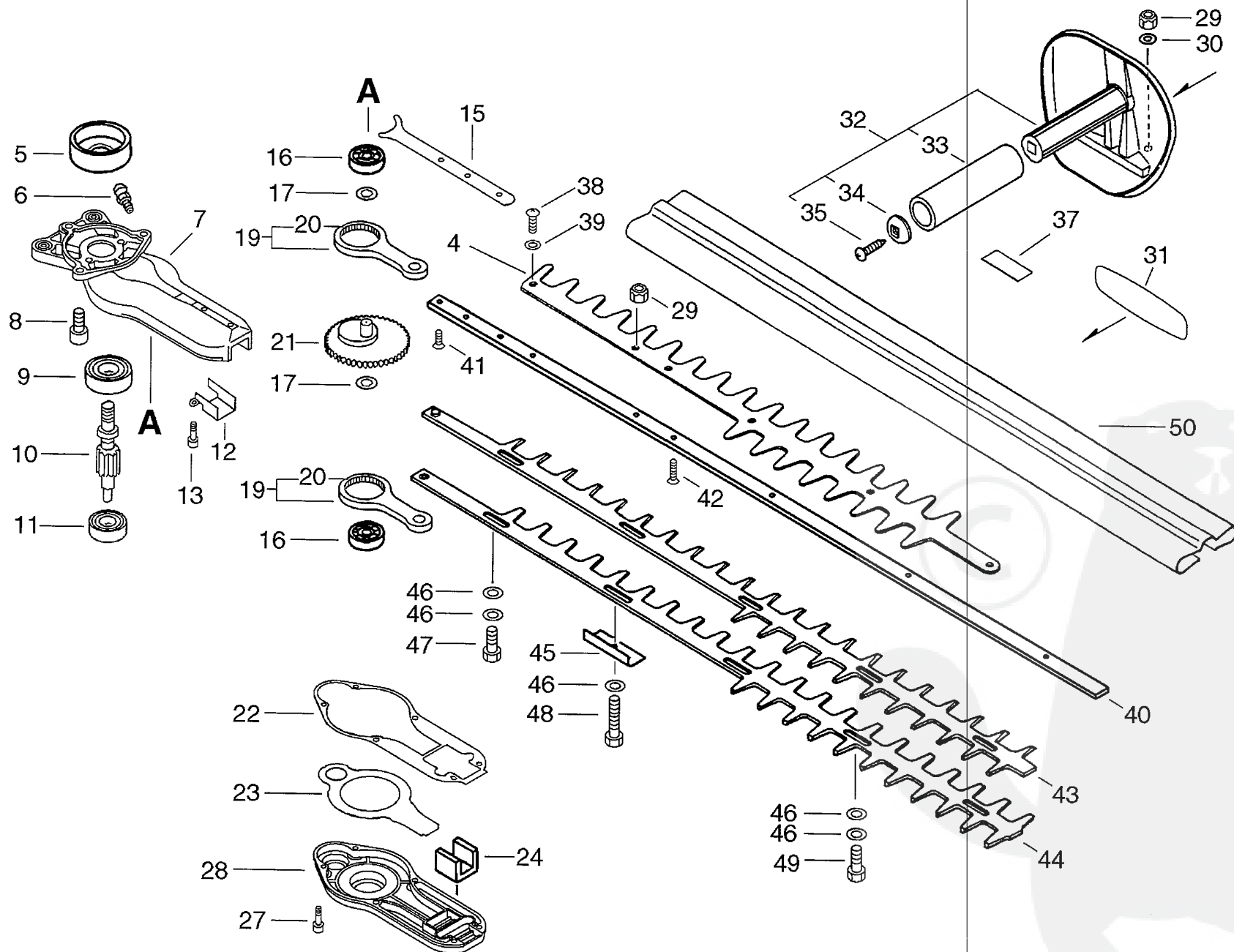


P a r t s L i s t

Date:15/09/2010 Page: 1

Group:Hedge Trimmers Model:HC-30ESW(35)(36) Section:Handle, Tools(8)

Key	Lv	Part Number	Q'ty	Description	Remarks	Note
5		A440-000460	1	SWITCH,ON OFF		
6		P021-002612	1	GRIP ASY,F-HANDLE		
7	+	V162-000130	1	PLUG		
8	+	900500-00005	1	NUT 5		
9	+	900220-05030	1	SCREW 5*30		
10	+	900253-04016	3	SCREW 4*16		
12		V452-000050	1	SPRING,TORSION		
13		C460-000011	1	LOCKOUT,THROTTLE		
14		C450-000022	1	TRIGGER,THROTTLE		
15		V452-000060	1	SPRING,TORSION		
20		V495-000300	1	BAND	Sus. by 178121-43230	
20		178121-43230	1	BAND		
21		162110-56530	1	TUBE		
22		V430-000980	1	CABLE,BOWDEN		
23		900502-00006	2	NUT 6 (3N)	Sus. by 900502-00006 Q'ty:1 and 900515-00006 Q'ty:1	
23		900515-00006	1	NUT 6 (3N)	Sus. by 900518-00006	
23		900518-00006	1	NUT, FLANGE		
24		900238-05010	1	SCREW 5*10		
25		900502-00006	1	NUT 6 (3N)		
26		C410-000170	1	HANDLE,REAR		
27		300217-00610	2	WASHER		
28		351228-07760	4	CUSHION		
29		900500-00005	2	NUT 5		
30		351217-07761	1	SUPPORTER, HANDLE		
33		351241-01260	2	SPASER		
34		351242-06961	1	PLATE, EYE		
35		900162-05045	2	BOLT, H.S. 5*45		
36		351243-01260	1	BRACKET		



P a r t s L i s t

Date:15/09/2010 Page: 1

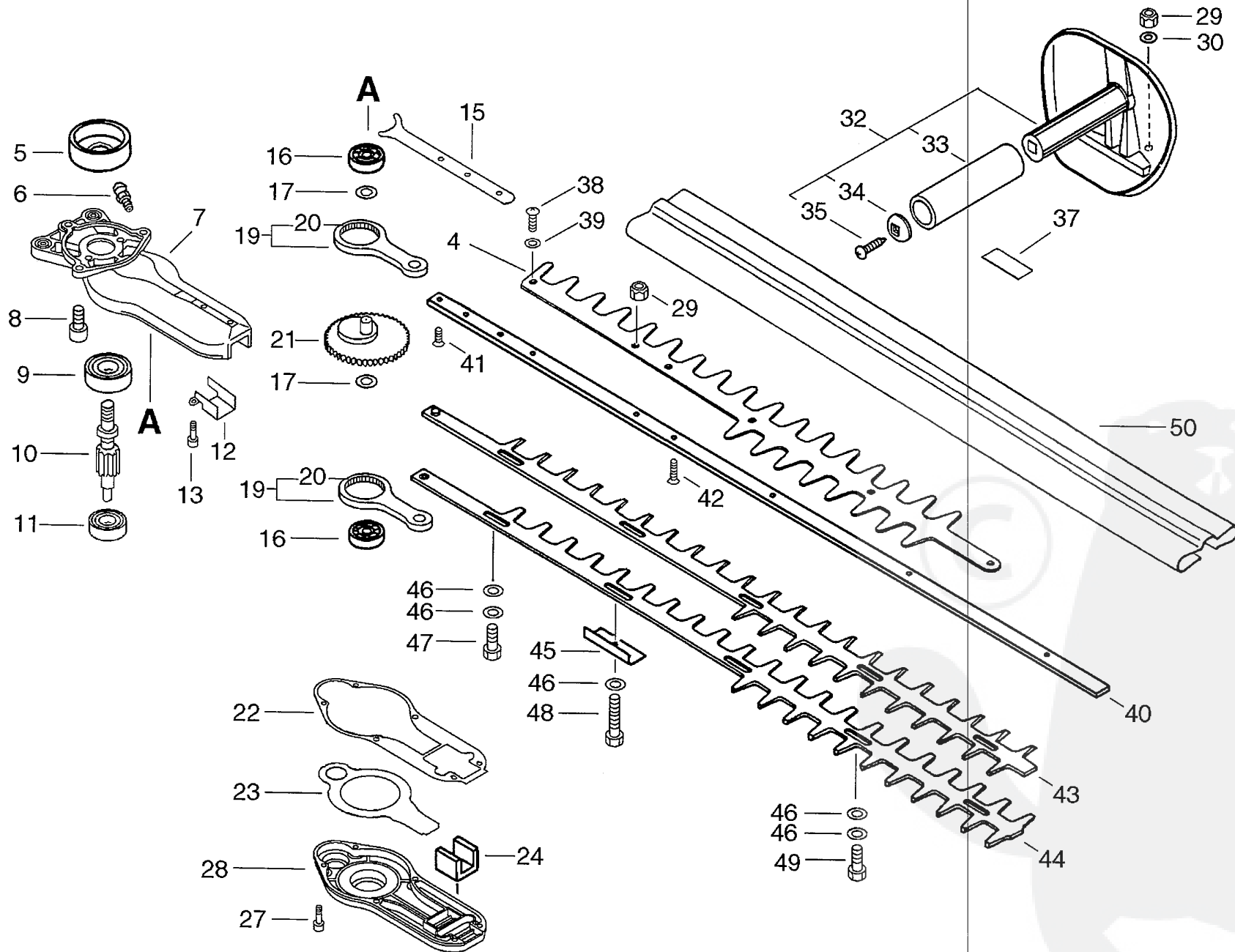
Group:Hedge Trimmers Model:HC-30ESW(35)(36) Section:Gear Case, Cutter(Sr/Nr 36002135 and before) (9)

Key	Lv	Part Number	Q'ty	Description	Remarks	Note
4		X431-000010	1	BLUNT	Sus. by X431-000011	
4		X431-000011	1	BLUNT		
5		A556-000301	1	DRUM,CLUTCH		
6		880110-10860	1	NIPPLE, GREASE		
7		C531-000210	1	CASE,GEAR	Sus. by C531-000270	
7		C531-000270	1	CASE,GEAR		
8		900162-06018	3	BOLT, H.S.H		
9		900812-06200	1	BEARING, BALL 6200		
10		V650-000160	1	GEAR, SPUR		
11		900804-00608	1	BEARING, BALL 608		
12		C538-000090	1	GUIDE,CUTTER		
13		900162-04016	2	BOLT, H.S. 4*16		
15		V150-001240	1	PLATE,EYE		
16		900810-06200	2	BEARING, BALL 6200		
17		100014-17330	2	SPACER, PISTON PIN		
19		P021-008400	2	ROD,CONNECTING		
20 +		610327-01261	2	BEARING, NEEDLE		
21		V060-000030	1	GEAR, SPUR		
22		V110-000030	1	GASKET,GEAR CASE		
23		C542-000020	1	PLATE,CASE LID		
24		V541-000100	1	SEAL		
27		900162-04016	6	BOLT, H.S. 4*16		
28		C531-000220	1	GEAR CASE	Sus. by C531-000280	
28		C531-000280	1	GEAR CASE		
29		433022-06460	6	NUT		
30		900603-00006	2	WASHER 6		
31		X502-000270	1	LABEL,ECHO	Sr/Nr 36001621 and after	
32		351200-07360	1	HANDLE ASSY	Sus. by 351200-07363	

Parts List

Group:Hedge Trimmers Model:HC-30ESW(35)(36) Section:Gear Case, Cutter(Sr/Nr 36002135 and before)(9)

Key	Lv	Part Number	Q'ty	Description	Remarks	Note
32		351200-07361	1	HANDLE ASSY	Sus. by 351200-07363	
32		351200-07362	1	HANDLE ASSY	Sus. by 351200-07363	
32		351200-07363	1	HANDLE ASSY		
33	+	351012-07360	1	GRIP, HANDLE	Sus. by 351012-07361	
33	+	351012-07361	1	GRIP, HANDLE		
34	+	351217-07360	1	SUPPORTER, F. HANDLE	Sus. by 351217-07361	
34	+	351217-07361	1	SUPPORTER, F. HANDLE		
35	+	900253-05014	1	SCREW 5*14		
37		890617-07660	1	LABEL, CAUTION	Sus. by X505-002030	
37		X505-002030	1	LABEL, CAUTION		
38		900238-05010	1	SCREW 5*10		
39		145712-14730	1	WASHER		
40		X425-000151	1	SUPPORT, CUTTER	Sus. by X425-000161	
40		X425-000160	1	SUPPORT, CUTTER	Sus. by X425-000161	
40		X425-000161	1	SUPPORT, CUTTER		
41		91103-06020	2	BOLT HSH		
42		91103-06030	1	BOLT HSH		
43		697010-07361	1	CUTTER	Sus. by 697010-07362	
43		697010-07362	1	CUTTER		
44		697011-07361	1	CUTTER	Sus. by 697011-07362	
44		697011-07362	1	CUTTER		
45		699213-02063	1	INSULATOR		
46		699118-01261	9	WASHER		
47		699115-08960	1	BOLT, CUTTER		
48		351027-02060	1	BOLT		
49		699115-02062	3	BOLT		
50		898523-05160	1	COVER, CUTTER		



Parts List

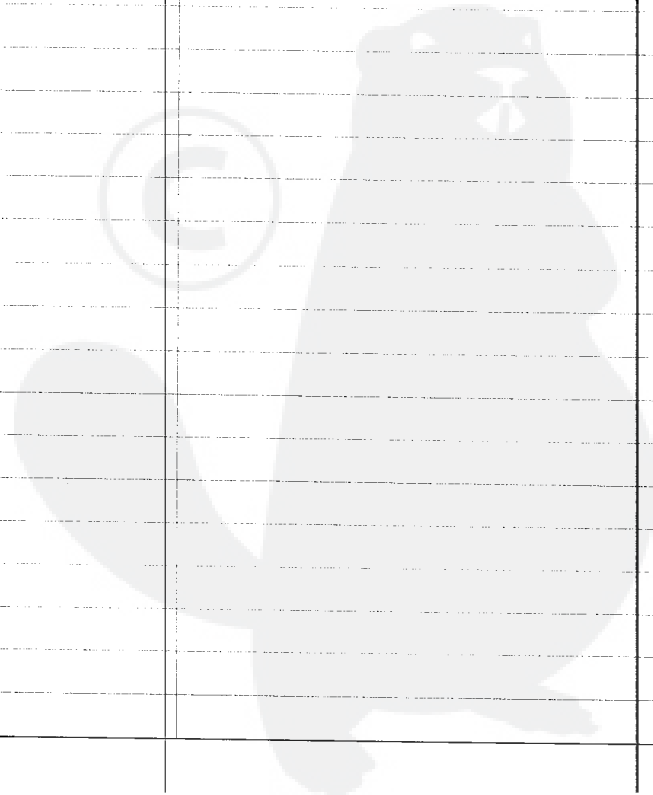
Group:Hedge Trimmers Model:HC-30ESW(35)(36) Section:Gear Case, Cutter(Sr/Nr 36002136 and after)(10)

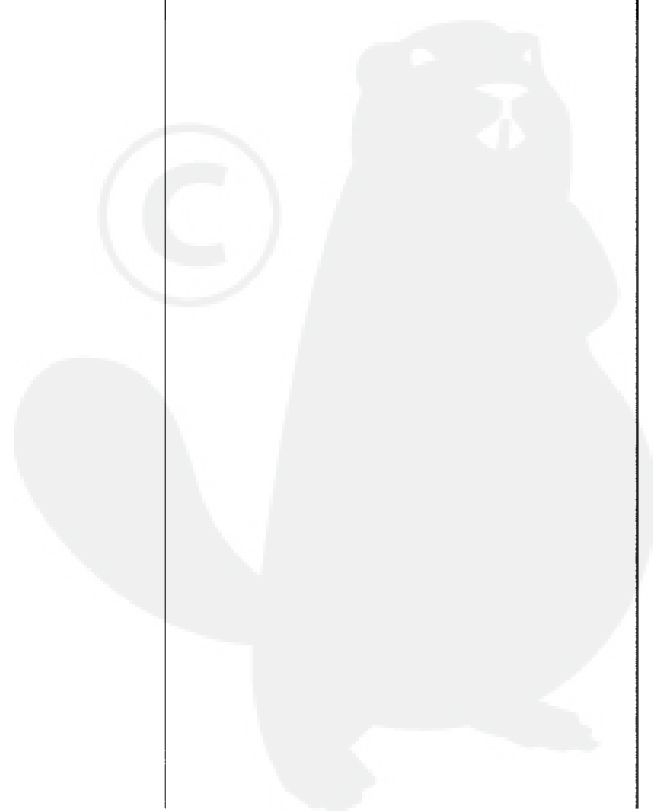
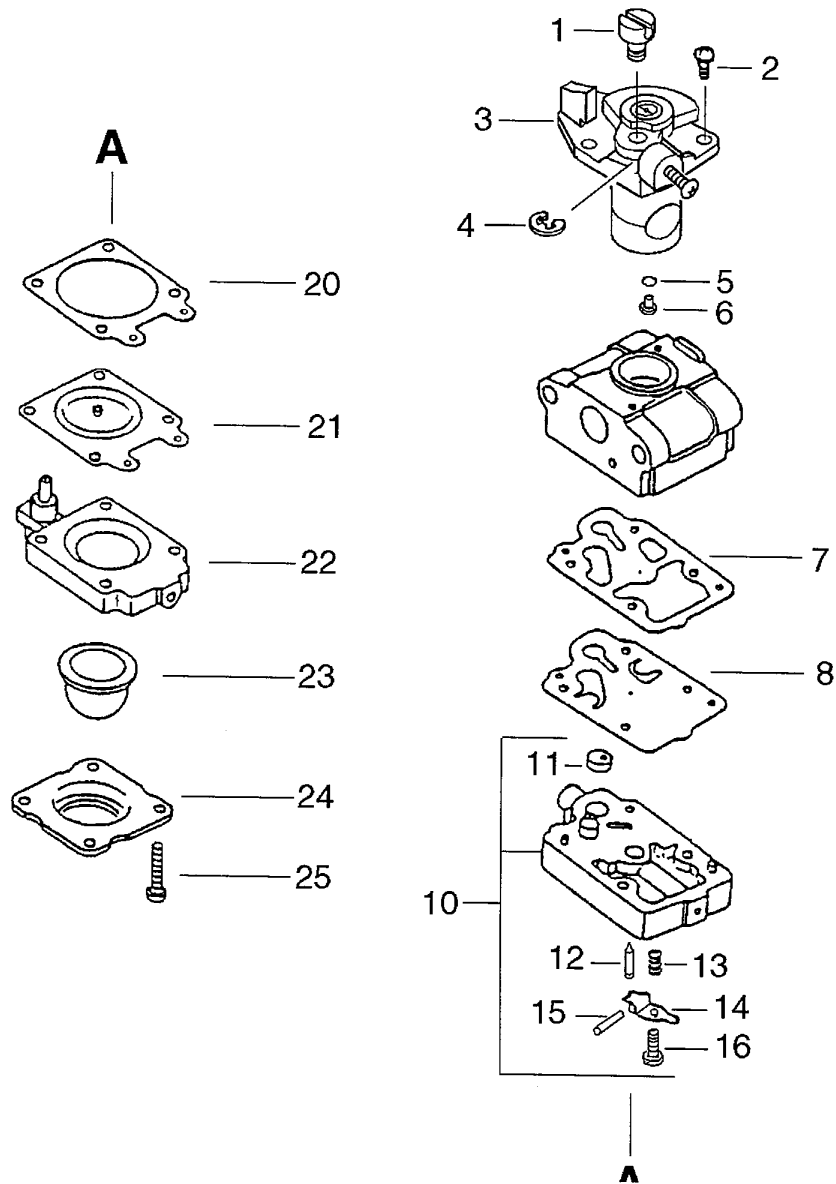
Key	Lv	Part Number	Q'ty	Description	Remarks	Note
4		X431-000011	1	BLUNT		
5		A556-000301	1	DRUM, CLUTCH		
6		880110-10860	1	NIPPLE, GREASE		
7		C531-000270	1	CASE, GEAR		
8		900162-06018	3	BOLT, H.S.H		
9		900812-06200	1	BEARING, BALL 6200		
10		V650-000160	1	GEAR, SPUR		
11		900804-00608	1	BEARING, BALL 608		
12		C538-000090	1	GUIDE, CUTTER		
13		900162-04016	2	BOLT, H.S. 4*16		
15		V150-001240	1	PLATE, EYE		
16		900810-06200	2	BEARING, BALL 6200		
17		100014-17330	2	SPACER, PISTON PIN		
19		P021-008400	2	ROD, CONNECTING		
20	+	610327-01261	2	BEARING, NEEDLE		
21		V060-000030	1	GEAR, SPUR		
22		V110-000030	1	GASKET, GEAR CASE		
23		C542-000020	1	PLATE, CASE LID		
24		V541-000100	1	SEAL		
27		900162-04016	6	BOLT, H.S. 4*16		
28		C531-000280	1	CASE, GEAR		
29		433022-06460	6	NUT		
30		900603-00006	2	WASHER 6		
31		X502-000270	1	LABEL, ECHO	Disuse	
32		351200-07363	1	HANDLE ASY		
33	+	351012-07361	1	GRIP, REAR HANDLE		
34	+	351217-07361	1	SUPPORTER, F. HANDLE		
35	+	900253-05014	1	SCREW 5*14		

Parts List

Group:Hedge Trimmers Model:HC-30ESW(35) (36) Section:Gear Case, Cutter(Sr/Nr 36002136 and after) (10)

Key	Lv	Part Number	Q'ty	Description	Remarks	Note
37		X505-002030	1	LABEL, CAUTION		
38		900238-05010	1	SCREW 5*10		
39		145712-14730	1	WASHER		
40		X425-000161	1	SUPPORT, CUTTER		
41		91103-06020	2	BOLT HSH		
42		91103-06030	1	BOLT HSH		
43		697010-07362	1	CUTTER		
44		697011-07362	1	CUTTER		
45		699213-02063	1	INSULATOR		
46		699118-01261	9	WASHER		
47		699115-08960	1	BOLT, CUTTER		
48		351027-02060	1	BOLT		
49		699115-02062	3	BOLT		
50		898523-05160	1	COVER, CUTTER		





Parts List

Group:Hedge Trimmers Model:HC-30ESW(35)(36) Section:Carburetor(11)

Key	Lv	Part Number	Q'ty	Description	Remarks	Note
		A021-000690	1	CARBURETOR, DIAPHRAGM	Sus. by A021-000691	
		A021-000691	1	CARBURETOR, DIAPHRAGM		
1	+	123172-45130	1	SWIVEL		
2	+	123114-44330	2	SCREW		
3	+	P003-000800	1	VALVE THROTTLE	Can be used on A021-000690 only	
4	+	123173-07930	1	CLIP		
5	+	123183-40630	1	O-RING		
6	+	P003-000280	1	JET		
7	+	123125-40630	1	GASKET, PUMP		
8	+	123112-40630	1	DIAPHRAGM, PUMP		
10	+	P003-000780	1	BODY ASY, PUMP		
11	++	123126-10631	1	SCREEN, INLET		
12	++	123137-19830	1	VALVE, INLET NEEDLE		
13	++	123122-05560	1	SPRING, METER. LEVER		
14	++	123123-03930	1	LEVER, METERING		
15	++	123138-03930	1	PIN, METERING LEVER		
16	++	123139-05560	1	SCREW, M. LEVER PIN		
20	+	123140-05560	1	GASKET, M. DIAPHRAGM		
21	+	P003-000090	1	METERING, DIAPHRAGM		
22	+	123180-05560	1	BODY, AIR PURGE		
23	+	123181-40630	1	PUMP, PRIMER		
24	+	123142-05560	1	COVER, PRIMER PUMP		
25	+	123110-05560	4	SCREW, PUMP COVER		