

Parts List

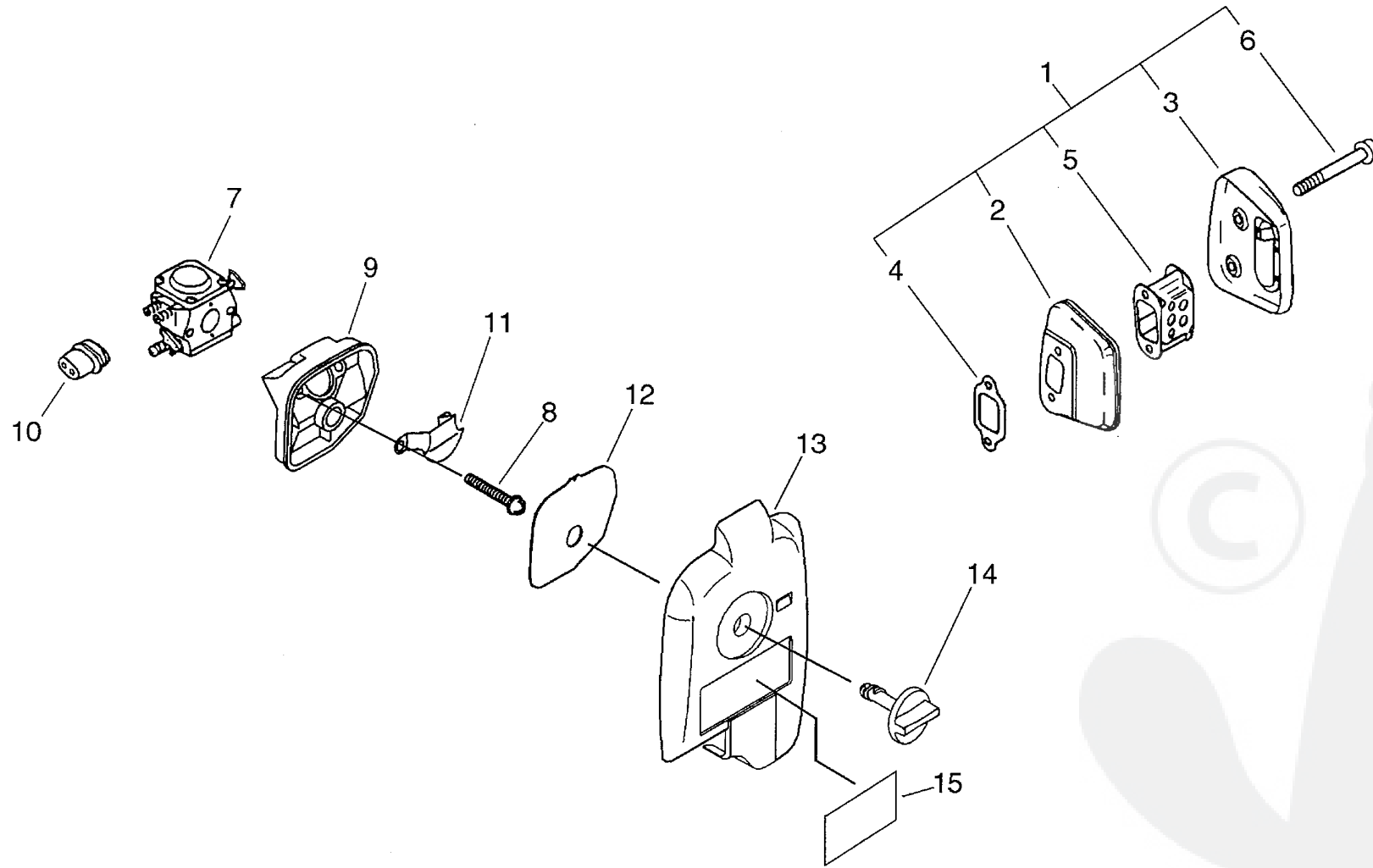
Group:Chain Saws Model:CS-2600(6digits)(35)(36) Section:Cylinder, Crankcase, Piston(1)

Key	Lv	Part Number	Q'ty	Description	Remarks	Note
1		P021-001890	1	CRANKCASE SET	Sus. by P021-001892	
1		P021-001891	1	CRANKCASE SET	Sus. by P021-001892	
1		P021-001892	1	CRANKCASE SET		
2	+	900106-05020	4	BOLT, H.S. 5*20	Sus. by 900162-05022	
2	+	900162-05022	4	BOLT, H.S. 5*22		
3		P021-001900	1	PISTON KIT		
4	+	100011-05731	1	RING, PISTON		
5	+	100013-22330	1	PIN, PISTON		
6	+	100015-04630	2	CIRCLIP, PISTON PIN		
7	+	100014-11520	2	SPACER, PISTON PIN		
8		P021-001920	1	CRANKSHAFT ASY		
9	+	V553-000010	1	BEARING, NEEDLE 8		
10	+	900800-36001	2	BEARING, BALL 6001		
11	+	V505-000000	2	SEAL, OIL 12		
12	+	V652-000010	1	GEAR, WORM		
13		A202-000000	1	BELLOWS, INTAKE	Sus. by A202-000001	
13		A202-000001	1	BELLOWS, INTAKE		
14		900162-04012	2	BOLT, H.S. 4*12		
15		V358-000020	1	COLLAR, 14		
16		A190-000050	1	COVER, ENGINE	Sus. by P021-003435	
16		A190-000051	1	COVER, ENGINE	Sus. by P021-003435	
16		A190-000052	1	COVER, ENGINE	Sus. by P021-003435	
16		A190-000052	1	COVER, ENGINE	Sus. by P021-003435	
16		P021-003430	1	COVER, ENGINE	Sus. by P021-003435	
16		P021-003431	1	COVER, ENGINE	Sus. by P021-003435	
16		P021-003432	1	COVER, ENGINE	Sus. by P021-003435	
16		P021-003433	1	COVER, ENGINE	Sus. by P021-003435	
16		P021-003434	1	COVER, ENGINE	Sus. by P021-003435	

Parts List

Group:Chain Saws Model:CS-2600(6digits)(35)(36) Section:Cylinder, Crankcase, Piston(1)

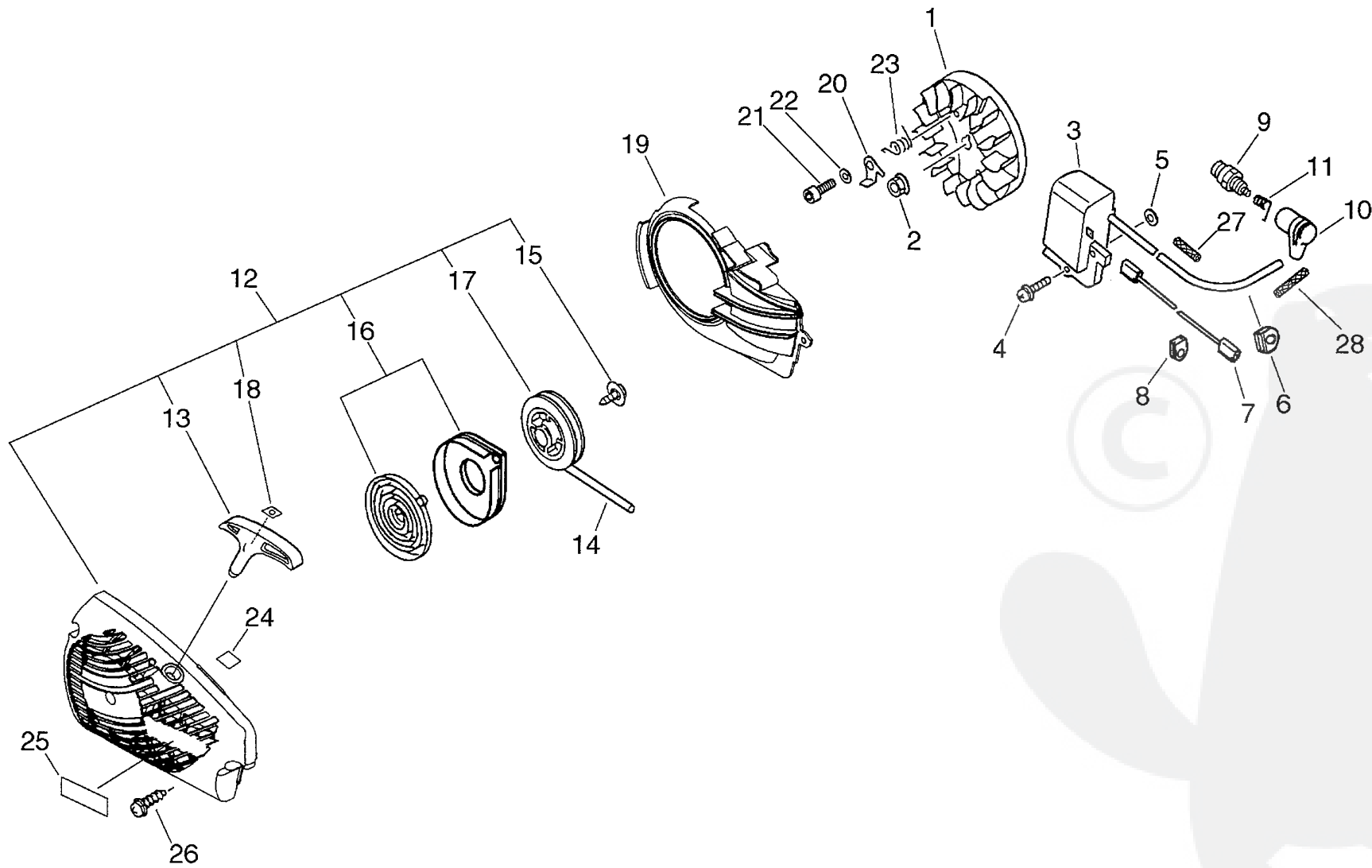
Key	Lv	Part Number	Q'ty	Description	Remarks	Note
16		P021-003435	1	COVER,ENGINE	Sus. by P021-003436	
17	+	900106-05020	2	BOLT, H.S. 5*20	Sr/Nr 36002710 and before	
17	+	900106-05025	2	BOLT, H.S. 5*25	Sr/Nr 36002711 and after	
18	+	436114-13930	1	VALVE, CHECK		
19	+	900724-00004	1	O-RING (S-4)	Sr/Nr 36001301 and after	
20		A127-000020	1	COVER,DUST	Sus. by A127-000021	
20		A127-000021	1	COVER,DUST		
21		900253-04012	2	SCREW		
22		163911-30130	1	PLUG		
23		C305-000020	1	PLATE, SPROCKET GUARD	Sus. by C305-000021	
23		C305-000021	1	PLATE, SPROCKET GUARD		
24		X505-000370	1	LABEL, CAUTION	Sus. by X505-002440	
25		433026-35430	1	CATCHER, CHAIN		
26		900253-05020	1	SCREW 5*20		
27		V225-000030	1	BOLT, STUD 8		
28		V202-000010	2	BOLT, 4	Sus. by V202-000011	
28		V202-000011	2	BOLT, 4		
29		900106-05016	4	BOLT, H.S. 5*16	Sus. by 900106-05016 Q'ty:2	
29		900106-05016	2	BOLT, H.S. 5*16		



P a r t s L i s t

Group:Chain Saws Model:CS-2600(6digits)(35)(36) Section:Air Cleaner, Muffler(2)

Key	Lv	Part Number	Q'ty	Description	Remarks	Note
1		P021-001930	1	MUFFLER ASY		
2	+	A300-000130	1	MUFFLER, EXHAUST		
3	+	A303-000000	1	LID, MUFFLER		
4	+	145510-13931	1	GASKET, MUFFLER		
5	+	A301-000000	1	PLATE, MUFFLER		
6	+	91107-05040	2	BOLT HSH FLANGE		
7		A021-000210	1	CARBURETOR, DIAPHRAGM	Sus. by A021-000211	
7		A021-000211	1	CARBURETOR, DIAPHRAGM	Sr/Nr 35049494 and before	
7		A021-000970	1	CARBURETOR, DIAPHRAGM	Sus. by A021-000973	
7		A021-000972	1	CARBURETOR, DIAPHRAGM	Sus. by A021-000973	
7		A021-000973	1	CARBURETOR, DIAPHRAGM	Sr/Nr 36001001 and after	
8		900238-05050	2	SCREW 5*50		
9		A225-000020	1	CASE, CLEANER	Sus. by A225-000021	
9		A225-000021	1	CASE, CLEANER	Sr/Nr 36001000 and before	
9		A225-000022	1	CASE, CLEANER	Sus. by A225-000023	
9		A225-000023	1	CASE, CLEANER	Sr/Nr 36001001 and after	
10		129010-33330	1	GROMMET	Sr/Nr 35049494 and before	
11		A244-000000	1	PLATE, PREVENT		
12		A226-000050	1	ELEMENT, AIR FILTER		
13		A232-000060	1	LID, CLEANER	Sus. by A232-000061	
13		A232-000061	1	LID, CLEANER		
14		A235-000040	1	KNOB, CLEANER LID		
15		X503-001520	1	LABEL, MODEL		



Parts List

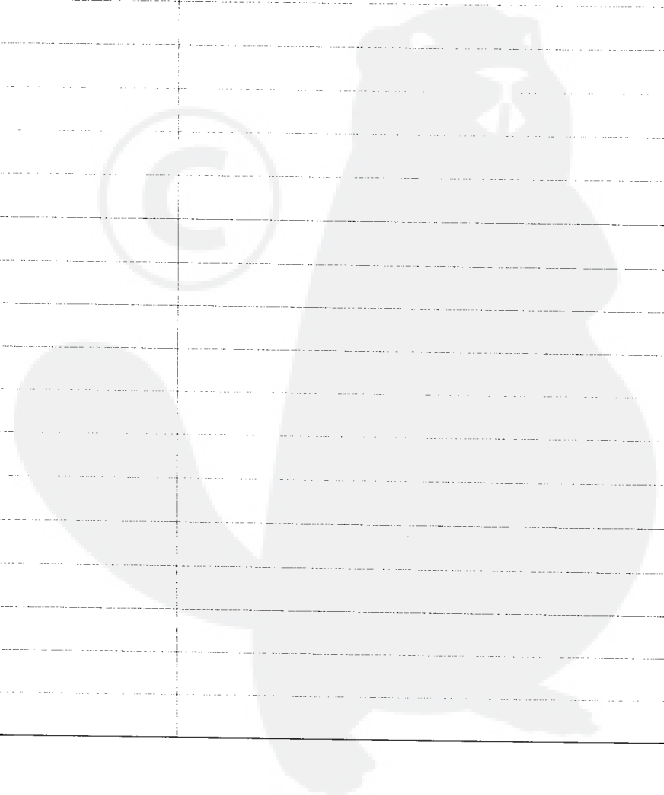
Group:Chain Saws Model:CS-2600(6digits)(35)(36) Section:Starter, Magneto(Sr/Nr 36005537 and before)(3)

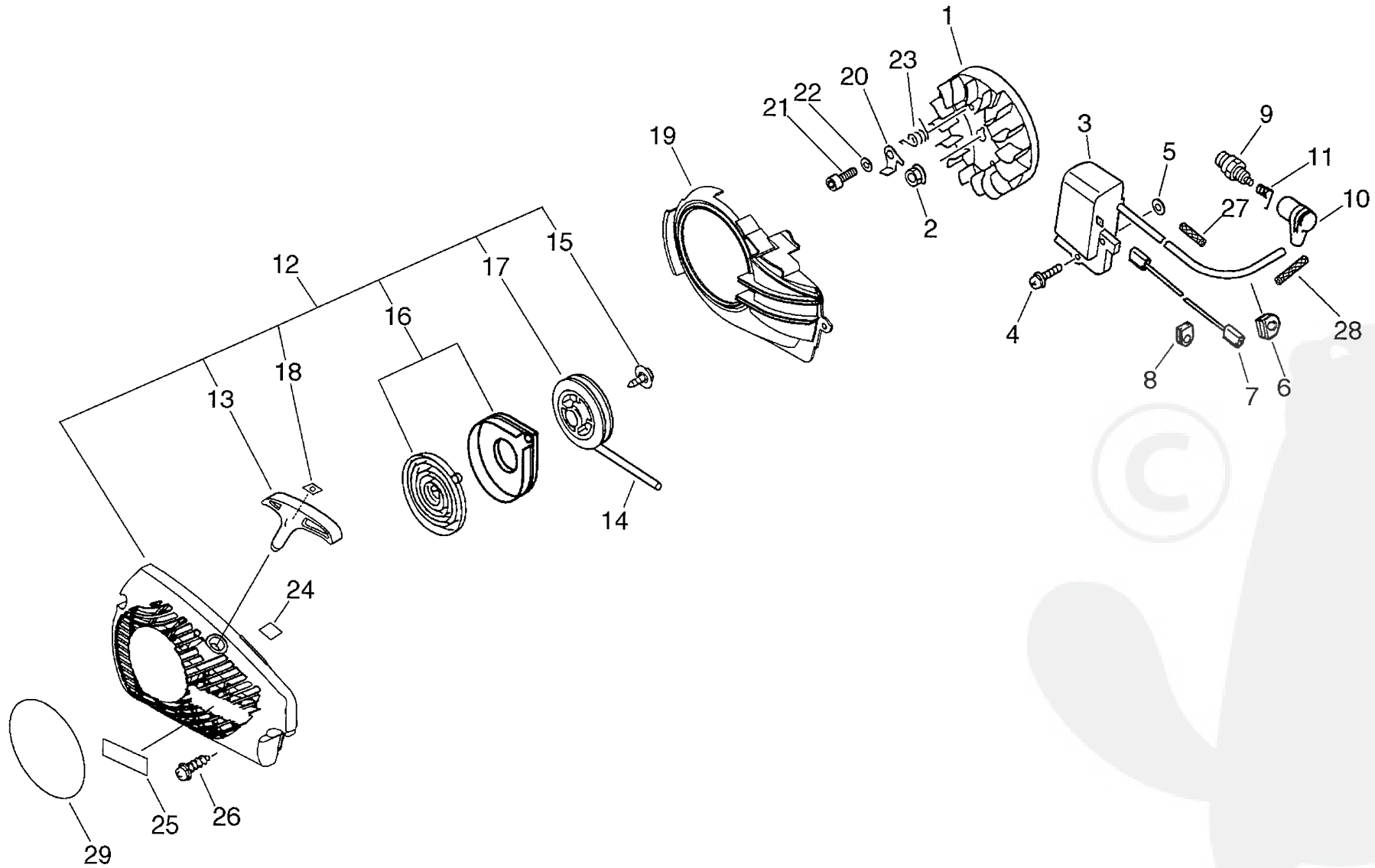
Key	Lv	Part Number	Q'ty	Description	Remarks	Note
1		A409-000040	1	ROTOR, MAGNETO		
2		900515-00008	1	NUT, FLANGE 8		
3		A411-000040	1	COIL, IGNITION		
4		900238-05022	2	SCREW 5*22		
5		150117-16430	2	SPACER		
6		156110-04920	1	BUSHING		
7		V485-000140	1	LEAD		
8		156114-07320	1	GROMMET		
9		159010-10230	1	PLUG, SPARK (BPMR-7A		
10		159012-01620	1	CAP, SPARK PLUG	Sr/Nr 023700 and before	
10		A427-000010	1	CAP, SPARK PLUG	Sus. by A427-000012	
10		A427-000011	1	CAP, SPARK PLUG	Sus. by A427-000012	
10		A427-000012	1	CAP, SPARK PLUG	Sr/Nr 023701 and after, Sus. by A427-000013	
11		159011-03432	1	COIL, SPARK PLUG CAP	Sr/Nr 023700 and before	
11		A426-000010	1	TERMINAL, SPARKPLUG	Sr/Nr 023701 and after	
12		A051-000030	1	STARTER, RECOIL	Sus. by A051-000031	
13	+	P022-001320	1	GRIP, STARTER		
14	+	177226-60930	1	ROPE, STARTER		
15	+	177236-44330	1	SCREW		
16	+	P022-001330	1	SPRING KIT, REWIND		
17	+	177215-60930	1	DRUM, STARTER		
18	+	P022-001350	1	STOPPER, ROPE		
19		A172-000110	1	COVER, FAN	Sus. by A172-000112	
19		A172-000111	1	COVER, FAN	Sus. by A172-000112	
19		A172-000112	1	COVER, FAN		
20		A514-000000	2	PAWL		
21		900216-05016	2	SCREW, 5*16	Sus. by V203-000100 and 900603-00005	
21		900105-05016	2	BOLT, H.S. 5*16	Sus. by V203-000100 and 900603-00005	

Parts List

Group:Chain Saws Model:CS-2600(6digits)(35)(36) Section:Starter, Magneto(Sr/Nr 36005537 and before)(3)

Key	Lv	Part Number	Q'ty	Description	Remarks	Note
21		V203-000100	2	BOLT, 5		
22		900603-00005	2	WASHER 5		
23		V452-000030	2	SPRING, TORSION		
24		890631-38230	1	LABEL, CAUTION		
25		X502-000020	1	LABEL, ECHO	Sus. by X502-000340	
26		900256-04016	3	SCREW 4*16		
27		V475-001900	1	TUBE		
28		V475-003550	1	TUBE	Sr/Nr 36001531 and after	

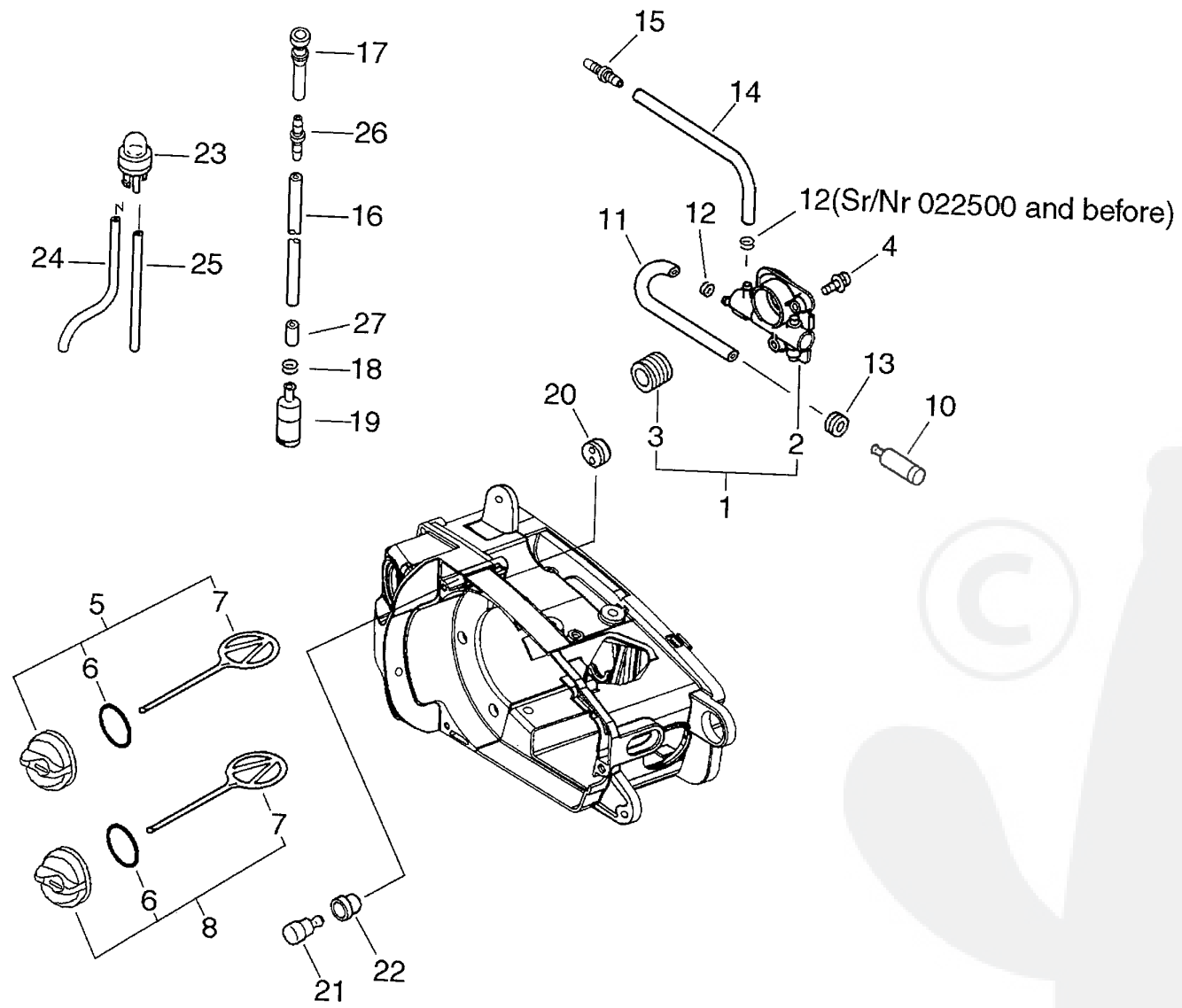




Parts List

Group:Chain Saws Model:CS-2600(6digits)(35)(36) Section:Starter, Magneto(Sr/Nr 36005538 and after)(4)

Key	Lv	Part Number	Q'ty	Description	Remarks	Note
1		A409-000040	1	ROTOR, MAGNETO		
2		900515-00008	1	NUT, FLANGE 8		
3		A411-000040	1	COIL, IGNITION		
4		900238-05022	2	SCREW 5*22		
5		150117-16430	2	SPACER		
6		156110-04920	1	BUSHING		
7		V485-000140	1	LEAD		
8		156114-07320	1	GROMMET		
9		159010-10230	1	PLUG, SPARK (BPMR-7A		
10		A427-000012	1	CAP, SPARK PLUG		
11		A426-000010	1	TERMINAL, SPARKPLUG		
12		A051-000031	1	STARTER, RECOIL		
13	+	P022-001320	1	GRIP, STARTER		
14	+	177226-60930	1	ROPE, STARTER		
15	+	177236-44330	1	SCREW		
16	+	P022-001330	1	SPRING KIT, REWIND		
17	+	177215-60930	1	DRUM, STARTER		
18	+	P022-001350	1	STOPPER, ROPE		
19		A172-000112	1	COVER, FAN		
20		A514-000000	2	PAWL		
21		V203-000100	2	BOLT, 5		
22		900603-00005	2	WASHER 5		
23		V452-000030	2	SPRING, TORSION		
24		890631-38230	1	LABEL, CAUTION		
25		X502-000020	1	LABEL, ECHO	Sus. by X502-000340	
25		X502-000340	1	LABEL, ECHO		
26		900256-04016	3	SCREW 4*16		
27		V475-001900	1	TUBE		



Parts List

Group:Chain Saws Model:CS-2600(6digits) (35) (36) Section:Auto-Oiler(5)

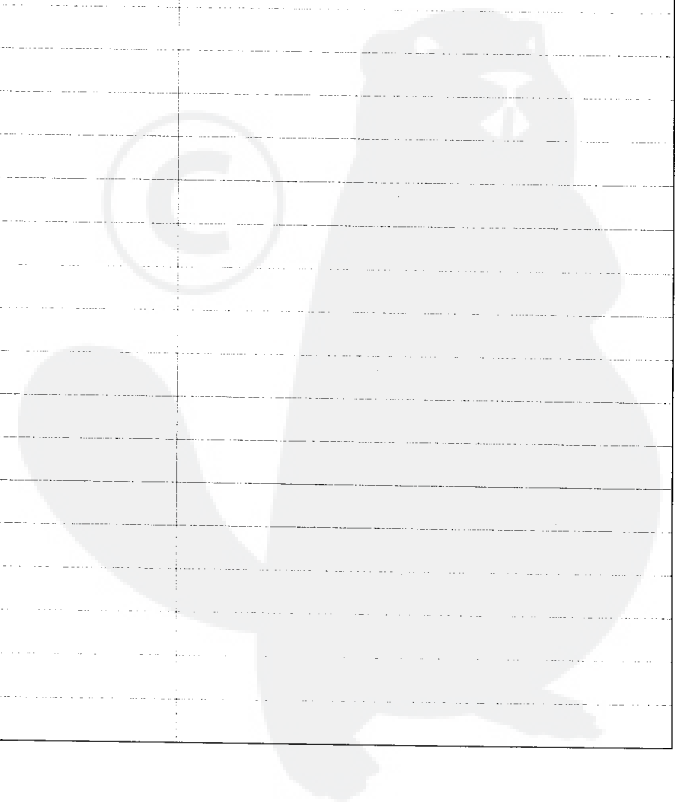
Date:13/08/2010 Page: 1

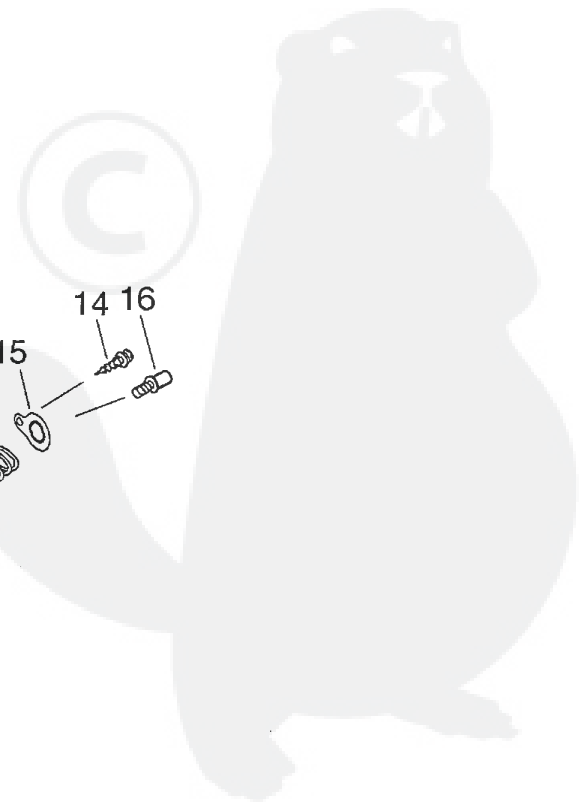
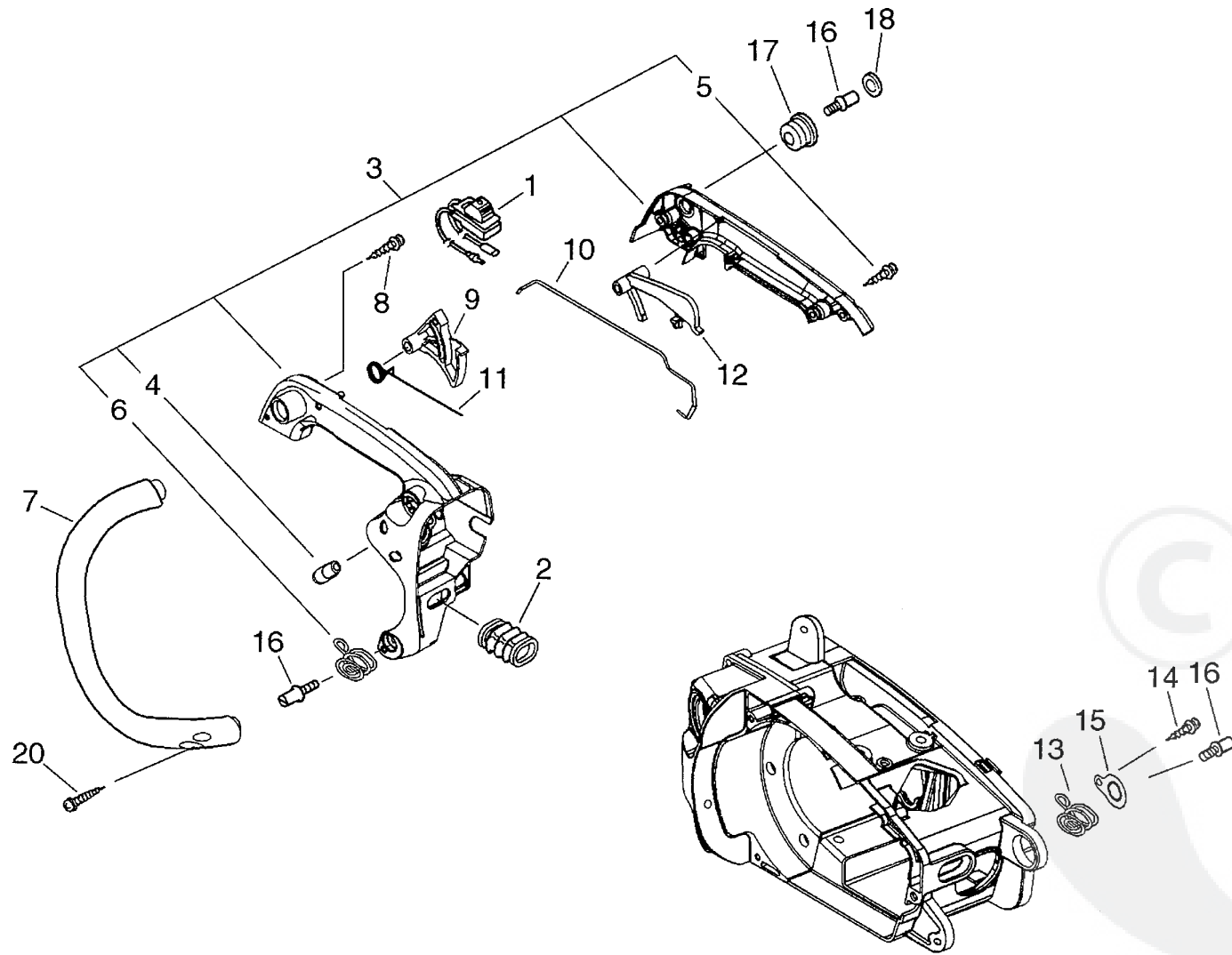
Key	Lv	Part Number	Q'ty	Description	Remarks	Note
1		P021-001980	1	AUTO-OILER ASY		
2	+	C022-000000	1	OILER, ASM AUTO		
3	+	V652-000010	1	GEAR, WORM		
4		900238-04012	2	SCREW 4*12		
5		P021-001990	1	FUEL CAP ASY	Sus. by P021-005591	
5		P021-001991	1	FUEL CAP ASY	Sus. by P021-005591	
5		P021-005590	1	FUEL CAP ASY	Sus. by P021-005591	
5		P021-005591	1	FUEL CAP ASY		
6	+	900720-00018	1	O-RING 18		
7	+	131051-19830	1	LINK	Sus. by A365-000050	
7	+	A365-000050	1	CONNECTOR, CAP		
8		P021-002000	1	OIL CAP ASY	Sus. by P021-005581	
8		P021-002001	1	OIL CAP ASY	Sus. by P021-005581	
8		P021-005580	1	OIL CAP ASY	Sus. by P021-005581	
8		P021-005581	1	OIL CAP ASY		
6	+	900720-00018	1	O-RING 18		
7	+	131051-19830	1	LINK	Sus. by A365-000050	
7	+	A365-000050	1	CONNECTOR, CAP		
10		436205-02832	1	STRAINER, OIL		
11		132010-22130	1	PIPE, FUEL		
12		132013-26630	2	CLIP	Sr/Nr 022500 and before	
12		132013-26630	1	CLIP	Sr/Nr 022501 and after	
13		132115-01461	1	GROMMET, FUEL	Sr/Nr 36003010 and before	
14		132012-11960	1	PIPE 3* 6* 45		
15		V187-000010	1	NIPPLE		
16		132010-11520	1	PIPE, 3*5*210		
16		V471-001230	1	PIPE	Sus. by V471-001230	
17		V470-000320	1	PIPE		

Parts List

Group:Chain Saws Model:CS-2600(6digits)(35)(36) Section:Auto-Oiler(5)

Key	Lv	Part Number	Q'ty	Description	Remarks	Note
18		132013-09820	1	CLIP		
19		131205-14930	1	STRAINER, FUEL		
20		132115-44330	1	GROMMET		
21		131300-56430	1	VALVE, CHECK		
22		V137-000000	1	GROMMET, FUEL		
23		123181-39130	1	PUMP, PRINER		
24		132010-00760	1	PIPE, FUEL	Sus. by V471-001250	
24		V471-001250	1	PIPE		
25		132010-04920	1	PIPE, FUEL	Sus. by V471-001260	
25		V471-000310	1	PIPE	Sus. by V471-001260	
25		V471-001260	1	PIPE		
26		V186-000020	1	JOINT, PIPE		
27		132001-15030	1	VALVE, CHECK	Disuse	



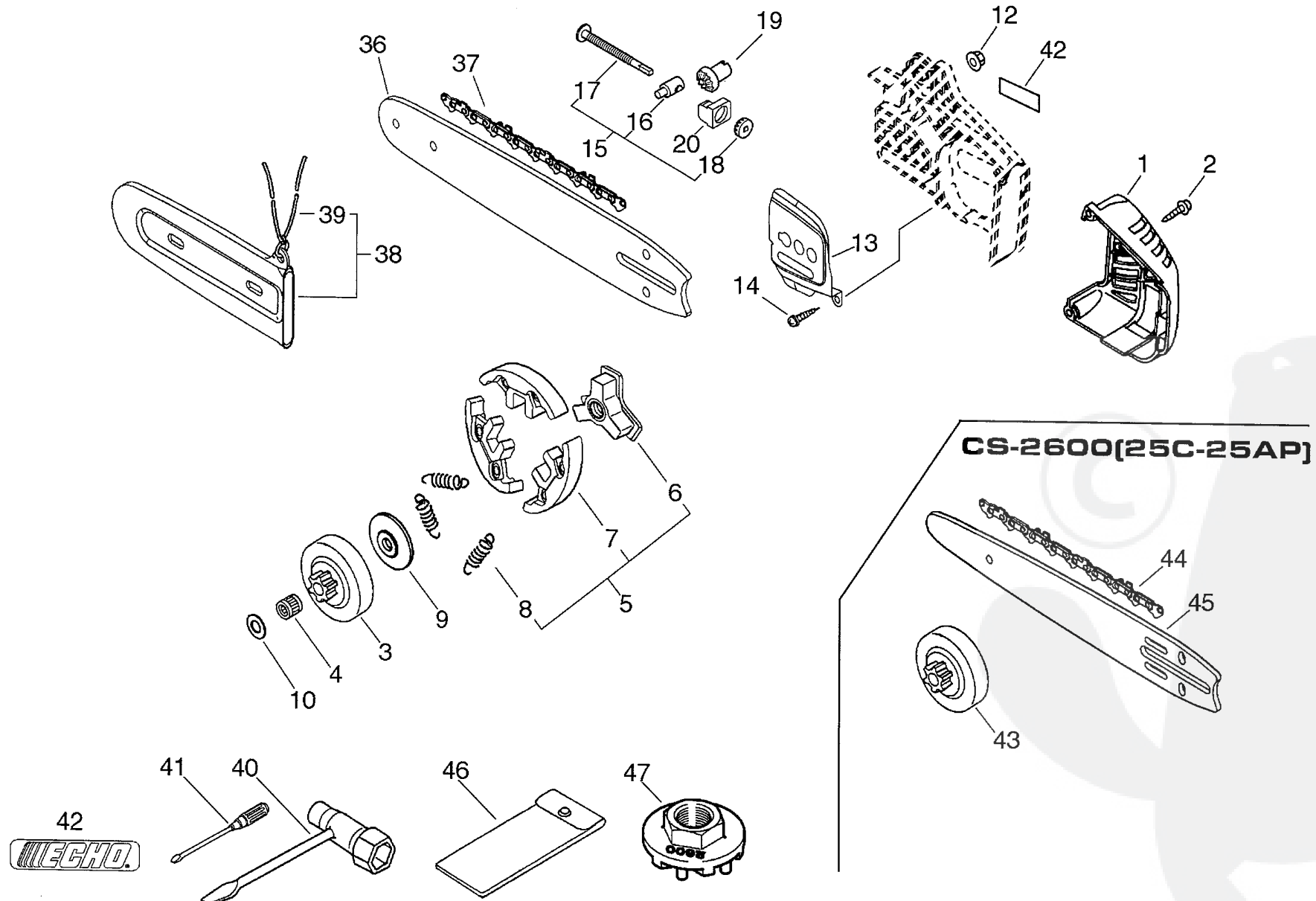


P a r t s L i s t

Group:Chain Saws Model:CS-2600(6digits)(35)(36) Section:Handle(6)

Date:13/08/2010 Page: 1

Key	Lv	Part Number	Q'ty	Description	Remarks	Note
1		A440-000210	1	SWITCH, ON OFF	Sus. by A440-000211	
2		A239-000000	1	PIPE, INTAKE		
3		P021-001960	1	HANDLE SET, REAR	Sus. by P021-001963	
3		P021-001961	1	HANDLE SET, REAR	Sus. by P021-001963	
3		P021-001962	1	HANDLE SET, REAR	Sus. by P021-001963	
3		P021-001963	1	HANDLE SET, REAR		
4 +		130020-33330	2	NUT		
5 +		900256-04016	4	SCREW 4*16		
6 +		V450-000340	1	SPRING, COMPRESSION	Can be used on the P021-001961 only	
7		C400-000050	1	HANDLE, FRONT		
8		900253-05020	1	SCREW 5*20		
9		C450-000010	1	TRIGGER, THROTTLE		
10		C454-000050	1	ROD, THROTTLE		
11		V452-000010	1	SPRING, TORSION		
12		C460-000000	1	LOCKOUT, THROTTLE	Sus. by C460-000002	
12		C460-000001	1	LOCKOUT, THROTTLE	Sus. by C460-000002	
12		C460-000002	1	LOCKOUT, THROTTLE		
13		V450-000080	2	SPRING, COMPRESSION	Sr/Nr 35034730 and before	
13		V450-000080	1	SPRING, COMPRESSION	Sr/Nr 35034731 and after	
14		900253-04012	1	SCREW		
15		V150-000420	1	PLATE, EYE		
16		V202-000000	3	BOLT, 4		
17		100910-18830	1	CUSHION	Sus. by 100910-18831	
17		100910-18831	1	CUSHION		
18		100918-15130	1	CAP		
20		900253-04016	2	SCREW 4*16	Sus. by 900256-04016	
20		900256-04016	4	SCREW 4*16		



Parts List

Group:Chain Saws Model:CS-2600(6digits)(35)(36) Section:Clutch, Sprocket, Tools(Sr/Nr 36005537 and before)(7)

Date:13/08/2010 Page: 1

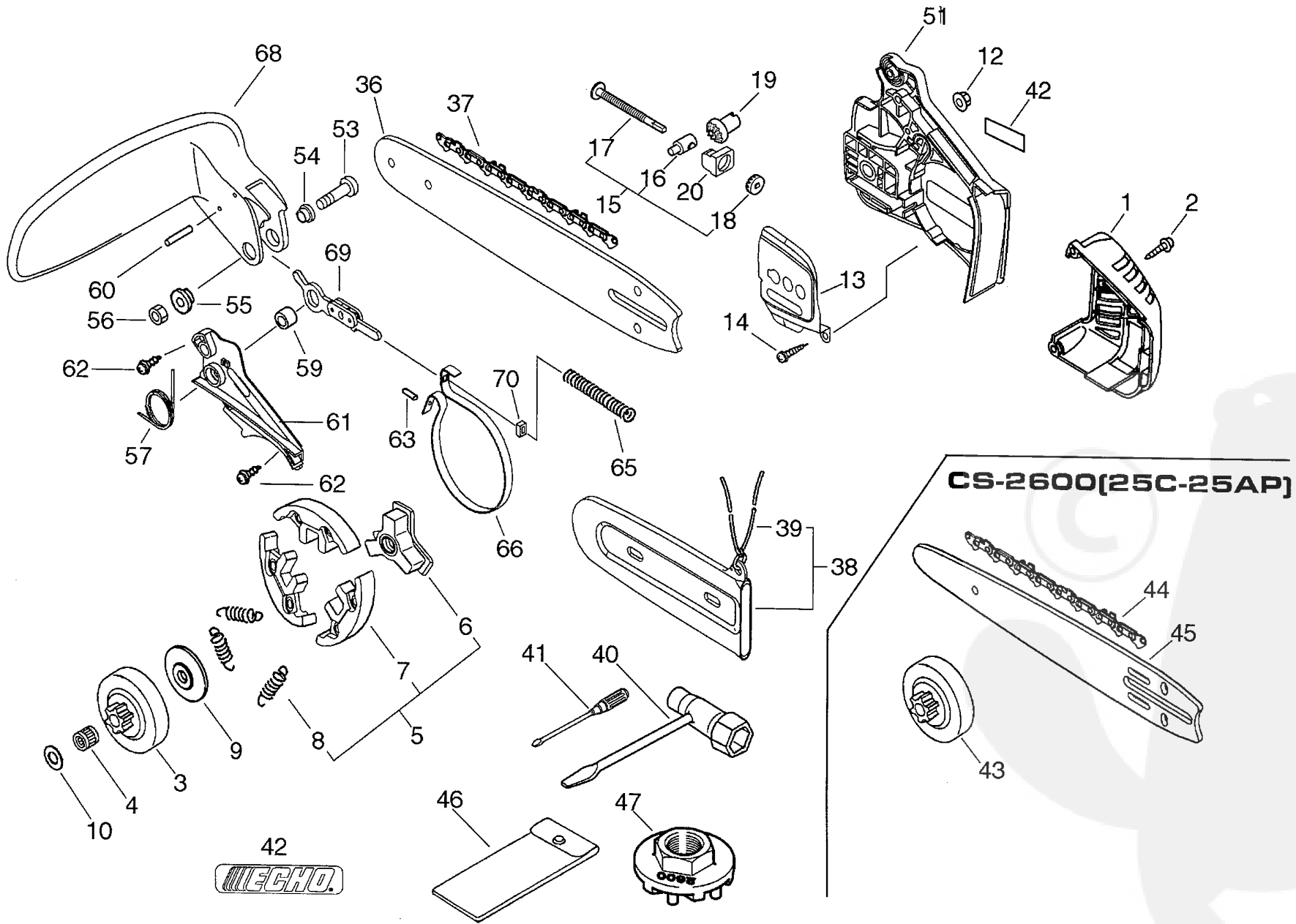
Key	Lv	Part Number	Q'ty	Description	Remarks	Note
1		A320-000020	1	COVER,MUFFLER		
1		A320-000021	1	COVER,MUFFLER	Sus. by A320-000021	
2		900253-04016	2	SCREW 4*16	Sus. by A320-000022	
3		A556-000090	1	DRUM,CLUTCH		
3		A556-000091	1	DRUM,CLUTCH	Sus. by A556-000091	
4		175012-35630	1	BEARING, NEEDLE	3/8	
5		A056-000030	1	CLUTCH		
6 +		A552-000020	1	HUB,CLUTCH		
7 +		P021-001950	1	CLUTCH SHOE SET		
8 +		V451-000150	3	SPRING,TENSION		
9		A551-000010	1	PLATE,CLUTCH		
10		175014-39130	1	WASHER, CLUTCH		
10		175014-39131	1	WASHER, CLUTCH	Sus. by 175014-39131	
12		433019-12330	1	NUT, FLANGE 8		
13		C305-000030	1	PLATE, SPROCKET GUARD		
13		C305-000031	1	PLATE, SPROCKET GUARD	Sus. by C305-000031	
14		900253-04010	1	SCREW 4*10		
15		P021-000060	1	TENSIONER,CHAIN ASY		
15		P021-000061	1	TENSIONER,CHAIN ASY	Sus. by P021-000063	
15		P021-000062	1	TENSIONER,CHAIN ASY	Sus. by P021-000063	
15		P021-000063	1	TENSIONER,CHAIN ASY	Sus. by P021-000063	
16 +		433014-60930	1	TENSIONER, CHAIN		
16 +		C309-000030	1	TENSIONER,CHAIN	Sus. by C309-000030	
17 +		V203-000020	1	BOLT, 5		
17 +		V203-000021	1	BOLT, 5	Sus. by V203-000021	
18 +		V651-000010	1	GEAR, BEVEL		
18 +		V651-000011	1	GEAR, BEVEL	Sus. by V651-000011	
19		V651-000000	1	GEAR, BEVEL	Sus. by V651-000001	

P a r t s L i s t

Group:Chain Saws Model:CS-2600(6digits)(35)(36) Section:Clutch, Sprocket, Tools(Sr/Nr 36005537 and before)(7)

Date:13/08/2010 Page: 2

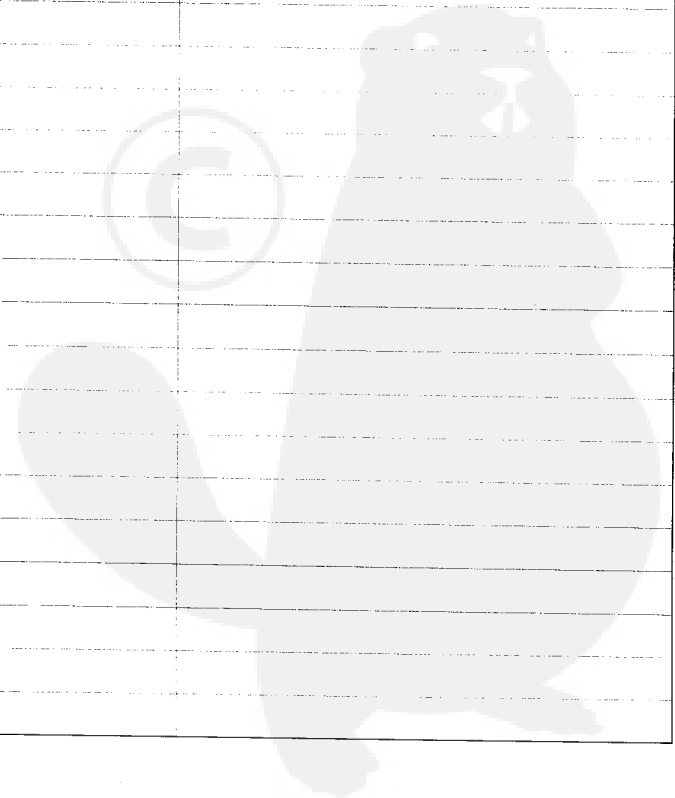
Key	Lv	Part Number	Q'ty	Description	Remarks	Note
19		V651-000001	1	GEAR, BEVEL		
20		V355-000030	1	COLLAR, 8		
20		V355-000270	1	COLLAR, 8	Sus. byV355-000270	
36		X121-000000	1	BAR, GUIDE 25		
36		X121-000001	1	BAR, GUIDE 25	Sus. by X121-000002	
36		X121-000002	1	BAR, GUIDE 25	Sus. by X121-000002	
37		X221-000000	1	CHAIN, SAW	25RC50S-3/8	
38		P021-002010	1	CHAIN SCABBARD	91VG-40E	
39	+	898568-14530	1	ROPE		
40		895410-02830	1	WRENCH, W/S. DRIVER		
41		895812-03930	1	DRIVER, SCREW 50		
42		X502-000020	1	LABEL, ECHO		
43		A556-000100	1	DRUM, CLUTCH	Sus. by X502-000340	
43		A556-000101	1	DRUM, CLUTCH	Sus. by A556-000101	
44		431610-10030	1	CHAIN, SAW 25AP-60E	1/4	
45		X101-000010	1	BAR, GUIDE 25	25AP-60E	
46		898510-39130	1	BAG, TOOL	25C50SL	
47		X640-000010	1	TOOL, PULLER		



P a r t s L i s t

Group:Chain Saws Model:CS-2600(6digits)(35)(36) Section:Clutch, Sprocket, Tools(Sr/Nr 36005538 and after)(8)

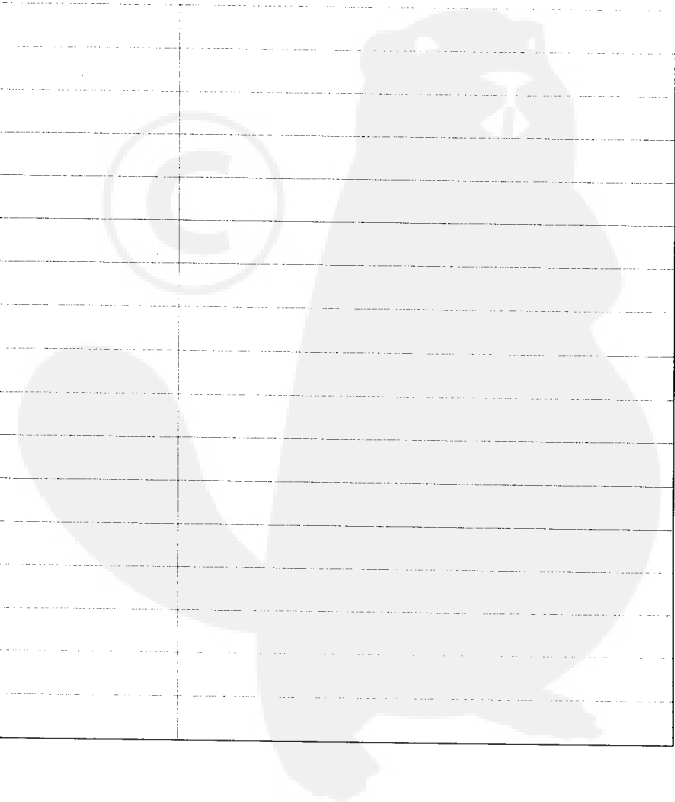
Key	Lv	Part Number	Q'ty	Description	Remarks	Note
1		A320-000021	1	COVER, MUFFLER		
2		900253-04016	2	SCREW 4*16		
3		A556-000091	1	DRUM, CLUTCH		
4		175012-35630	1	BEARING, NEEDLE		
5		A056-000030	1	CLUTCH		
6 +		A552-000020	1	HUB, CLUTCH		
7 +		P021-001950	1	CLUTCH SHOE SET		
8 +		V451-000150	3	SPRING, TENSION		
9		A551-000010	1	PLATE, CLUTCH		
10		175014-39131	1	WASHER, CLUTCH		
12		433019-12330	1	NUT, FLANGE 8		
13		C305-000031	1	PLATE, SPROCKET GUARD		
14		900253-04010	1	SCREW 4*10		
15		P021-000063	1	TENSIONER, CHAIN ASY		
16 +		C309-000030	1	TENSIONER, CHAIN		
17 +		V203-000021	1	BOLT, 5		
18 +		V651-000011	1	GEAR, BEVEL		
19		V651-000001	1	GEAR, BEVEL		
20		V355-000270	1	COLLAR, 8		
36		X121-000002	1	BAR, GUIDE25RCS0S-3/8		
37		X221-000000	1	CHAIN, SAW		
38		P021-002010	1	CHAIN SCABBARD		
39 +		898568-14530	1	ROPE		
40		895410-02830	1	WRENCH, W/S. DRIVER		
41		895812-03930	1	DRIVER, SCREW 50		
42		X502-000020	1	LABEL, ECHO	Sus. by X502-000340	
42		X502-000340	1	LABEL, ECHO		
43		A556-000101	1	DRUM, CLUTCH		

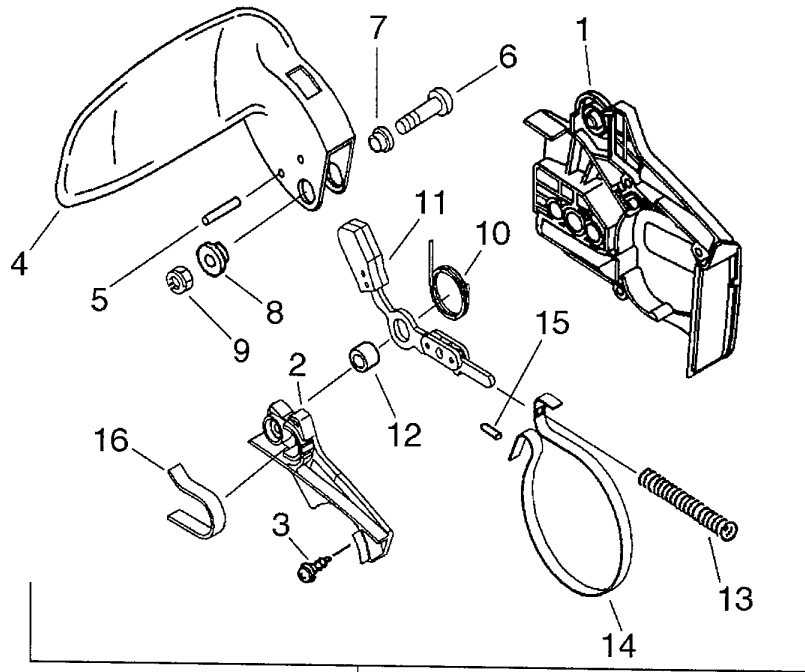


P a r t s L i s t

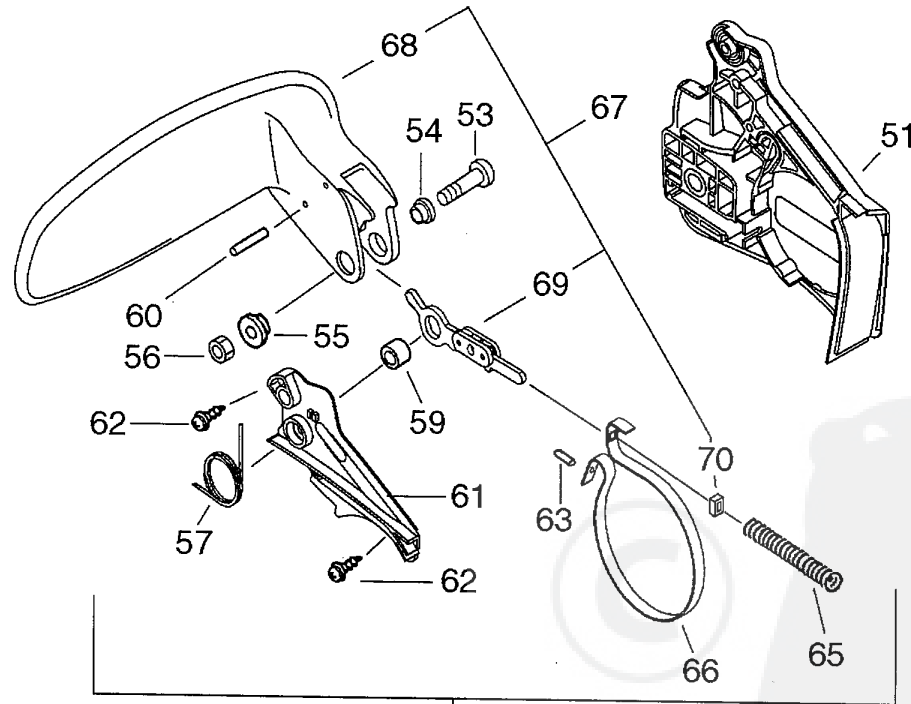
Group:Chain Saws Model:CS-2600(6digits)(35)(36) Section:Clutch, Sprocket, Tools(Sr/Nr 36005538 and after)(8)

Key	Lv	Part Number	Q'ty	Description	Remarks	Note
44		431610-10030	1	CHAIN, SAW		
45		X101-000010	1	BAR, GUIDE 25C50SL		
46		898510-39130	1	BAG, TOOL		
47		X640-000010	1	TOOL, PULLER		
51		C300-000170	1	GUARD, SPROCKET		
53		91318-05032	1	SCREW		
54		433167-39130	1	SPACER		
55		V353-000060	1	COLLAR, 5		
56		900562-50005	1	LOCKNUT 5		
57		V452-000110	1	SPRING, TORSION		
59		433116-35430	1	SPACER 8		
60		900330-30260	2	ROLLER 3*26		
61		C345-000112	1	COVER, BRAKE		
62		900253-04012	2	SCREW		
63		93050-30098	1	ROLLER		
65		V450-000070	1	SPRING, COMPRESSION		
66		C328-000020	1	BAND, BRAKE		
68		C320-000032	1	LEVER, BRAKE	Sus. by C320-000033	
68		C320-000033	1	LEVER, BRAKE		
69		C334-000070	1	CONNECTOR, BRAKE		
70		V376-000450	1	SPACER		





C032-00004X



C032-00016X

Parts List

Group:Chain Saws Model:CS-2600(6digits)(35)(36) Section:Chain Brake (Sr/Nr 36005537 and before)(9)

Key	Lv	Part Number	Q'ty	Description	Remarks	Note
		C032-000040	1	BRAKE,ASM CHAIN	Sus. by C032-000044	
		C032-000041	1	BRAKE,ASM CHAIN	Sus. by C032-000044	
		C032-000042	1	BRAKE,ASM CHAIN	Sus. by C032-000044	
		C032-000043	1	BRAKE,ASM CHAIN	Sus. by C032-000044	
		C032-000044	1	BRAKE,ASM CHAIN	Sr/Nr 35037760 and before	
1 +		C300-000030	1	GUARD,SPROCKET	Sus. by C300-000032	
1 +		C300-000031	1	GUARD,SPROCKET	Sus. by C300-000032	
1 +		C300-000032	1	GUARD,SPROCKET	Sr/Nr 35037760 and before	
2 +		C345-000020	1	COVER,BRAKE	Sr/Nr 35037760 and before	
3 +		900253-04012	2	SCREW	Sr/Nr 35037760 and before	
4 +		C320-000010	1	LEVER,BRAKE	Sr/Nr 35037760 and before	
5 +		900330-40298	2	PIN 4*29.8	Sr/Nr 35037760 and before	
6 +		91318-05032	1	SCREW	Sr/Nr 35037760 and before	
7 +		433167-39130	1	SPACER	Sr/Nr 35037760 and before	
8 +		V353-000060	1	COLLAR,5	Sr/Nr 35037760 and before	
9 +		900560-00005	1	NUT, LOCK	Sr/Nr 35037760 and before	
10 +		V452-000020	1	SPRING,TORSION	Sr/Nr 35037760 and before	
11 +		C334-000030	1	CONNECTOR,BRAKE	Sr/Nr 35037760 and before	
12 +		433116-35430	1	SPACER 8	Sr/Nr 35037760 and before	
13 +		V450-000070	1	SPRING,COMPRESSION	Sr/Nr 35037760 and before	
14 +		C328-000000	1	BAND,BRAKE	Sus. by C328-000002	
14 +		C328-000001	1	BAND,BRAKE	Sus. by C328-000002	
14 +		C328-000002	1	BAND,BRAKE	Sr/Nr 35037760 and before	
15 +		93050-30098	1	ROLLER	Sr/Nr 35037760 and before	
16 +		V453-000010	1	SPRING,FLAT	Sr/Nr 35037760 and before	
		C032-000160	1	BRAKE,ASM CHAIN	Sus. by C032-000165	
		C032-000161	1	BRAKE,ASM CHAIN	Sus. by C032-000165	
		C032-000162	1	BRAKE,ASM CHAIN	Sus. by C032-000165	

Parts List

Group:Chain Saws Model:CS-2600(6digits)(35)(36) Section:Chain Brake (Sr/Nr 36005537 and before)(9)

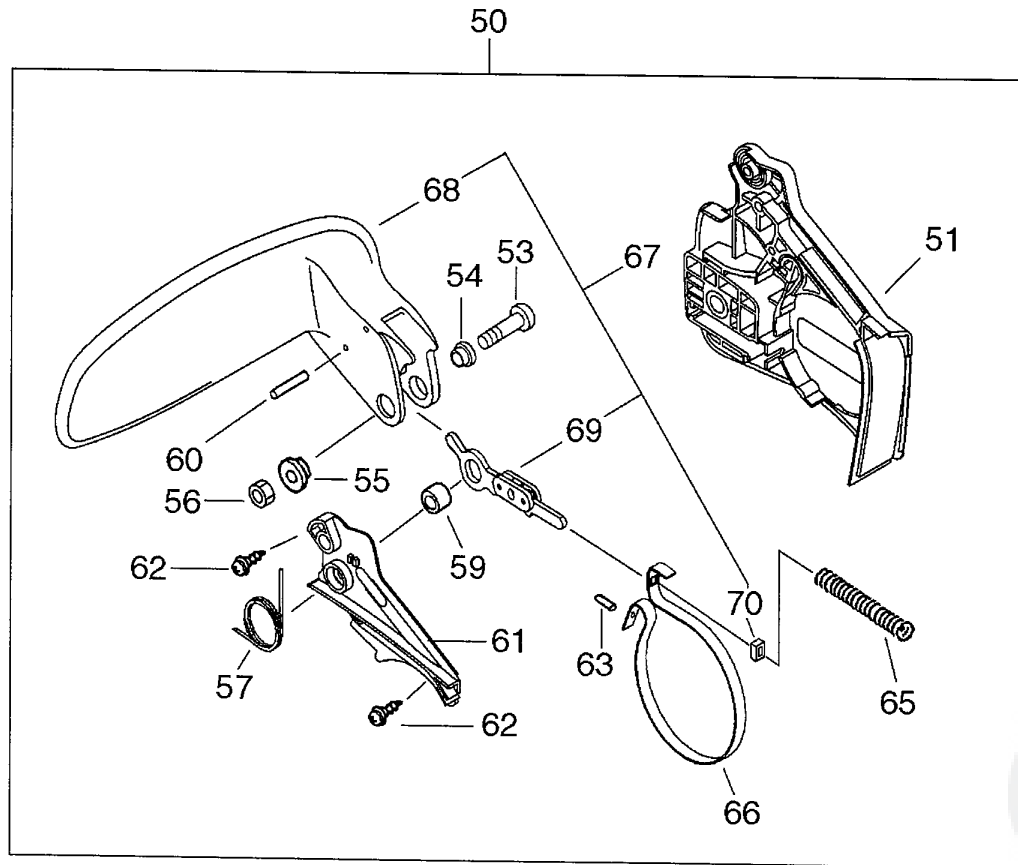
Key	Lv	Part Number	Q'ty	Description	Remarks	Note
	+	C032-000163	1	BRAKE,ASM CHAIN	Sus. by C032-000165	
	+	C032-000164	1	BRAKE,ASM CHAIN	Sus. by C032-000165	
	+	C032-000165	1	BRAKE,ASM CHAIN	Sus. by C032-000166	
	+	C032-000166	1	BRAKE,ASM CHAIN	Sus. by C032-000167	
51	+	C300-000170	1	GUARD, SPROCKET	Sr/Nr 35037761 and after	
53	+	91318-05032	1	SCREW	Sr/Nr 35037761 and after	
54	+	433167-39130	1	SPACER	Sr/Nr 35037761 and after	
55	+	V353-000060	1	COLLAR,5	Sr/Nr 35037761 and after	
56	+	900560-00005	1	NUT, LOCK 5	Sus. by 900562-50005	
56	+	900562-50005	1	NUT, LOCK 5	Sr/Nr 35037761 and after	
57	+	V452-000110	1	SPRING,TORSION	Sr/Nr 35037761 and after	
59	+	433116-35430	1	SPACER 8	Sr/Nr 35037761 and after	
60	+	900330-30260	2	ROLLER 3*26	Sr/Nr 35037761 and after	
61	+	C345-000110	1	COVER,BRAKE	Sus. by C345-000112	
61	+	C345-000111	1	COVER,BRAKE	Sus. by C345-000112	
61	+	C345-000112	1	COVER,BRAKE	Sr/Nr 35037761 and after	
62	+	900253-04012	2	SCREW	Sr/Nr 35037761 and after	
63	+	93050-30098	1	ROLLER	Sr/Nr 35037761 and after	
65	+	V450-000070	1	SPRING,COMPRESSION	Sr/Nr 35037761 and after	
66	+	C328-000020	1	BAND,BRAKE	Sr/Nr 35037761 and after	
67	+	P021-007890	1	BRAKE LEVER KIT	Sus. by P021-007892	
67	+	P021-007891	1	BRAKE LEVER KIT	Sus. by P021-007892	
67	+	P021-007892	1	BRAKE LEVER KIT	Sr/Nr 35037761 and after	
68	+	C320-000030	1	LEVER,BRAKE	Sus. by P021-007891	
68	++	C320-000031	1	LEVER,BRAKE	Sus. by C320-000032	
68	++	C320-000032	1	LEVER,BRAKE	Sus. by C320-000033	
69	+	C334-000040	1	CONNECTOR,BRAKE	Sr/Nr 35037761 to 35048694	
69	++	C334-000060	1	CONNECTOR,BRAKE	Sus. by C334-000070	

Parts List

Group:Chain Saws Model:CS-2600(6digits)(35)(36) Section:Chain Brake (Sr/Nr 36005537 and before)(9)

Key	Lv	Part Number	Q'ty	Description	Remarks	Note
69	++	C334-000070	1	CONNECTOR,BRAKE	Sr/Nr 35048695 and after	
70	+	V376-000450	1	SPACER	Sr/Nr 35037761 to 35048694	
70	++	V376-000540	1	SPACER	Sr/Nr 35048695 to 36001300	
70	++	V376-000450	1	SPACER	Sr/Nr 36001301 and after	

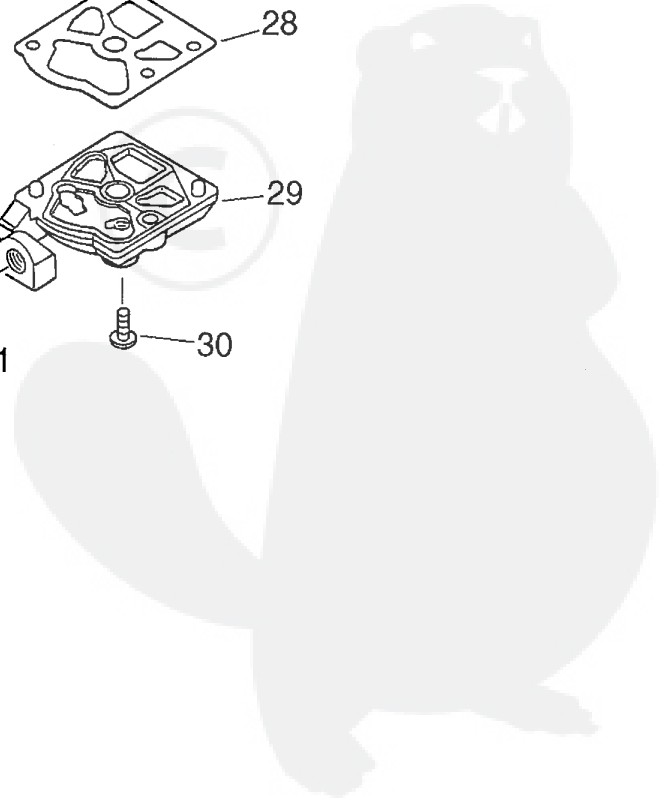
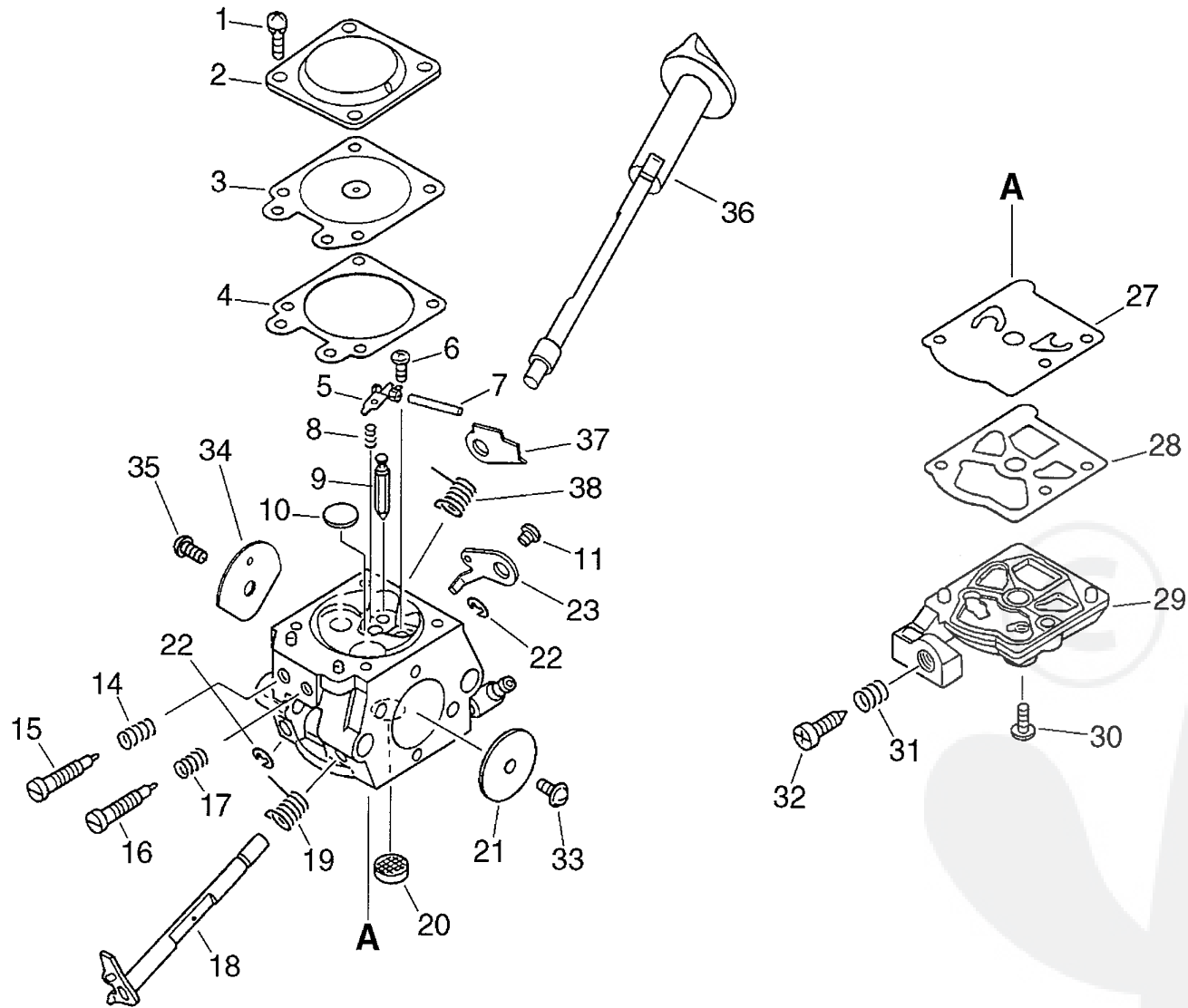




P a r t s L i s t

Group:Chain Saws Model:CS-2600(6digits)(35)(36) Section:Chain Brake (Sr/Nr 36005538 and after)(10)

Key	Lv	Part Number	Q'ty	Description	Remarks	Note
50		C032-000165	1	BRAKE,ASM CHAIN	Sus. by C032-000166	
50		C032-000166	1	BRAKE,ASM CHAIN		
51	+	C300-000170	1	GUARD, SPROCKET		
53	+	91318-05032	1	SCREW		
54	+	433167-39130	1	SPACER		
55	+	V353-000060	1	COLLAR, 5		
56	+	900562-50005	1	LOCKNUT 5		
57	+	V452-000110	1	SPRING, TORSION		
59	+	433116-35430	1	SPACER 8		
60	+	900330-30260	2	ROLLER 3*26		
61	+	C345-000112	1	COVER, BRAKE		
62	+	900253-04012	2	SCREW		
63	+	93050-30098	1	ROLLER		
65	+	V450-000070	1	SPRING, COMPRESSION		
66	+	C328-000020	1	BAND, BRAKE		
67	+	P021-007982	1	BRAKE LEVER KIT		
68	++	C320-000032	1	LEVER, BRAKE	Sus. by C320-000033	
68	++	C320-000033	1	LEVER, BRAKE	Sus. by C320-000034	
69	++	C334-000070	1	CONNECTOR, BRAKE		
70	++	V376-000450	1	SPACER		



Parts List

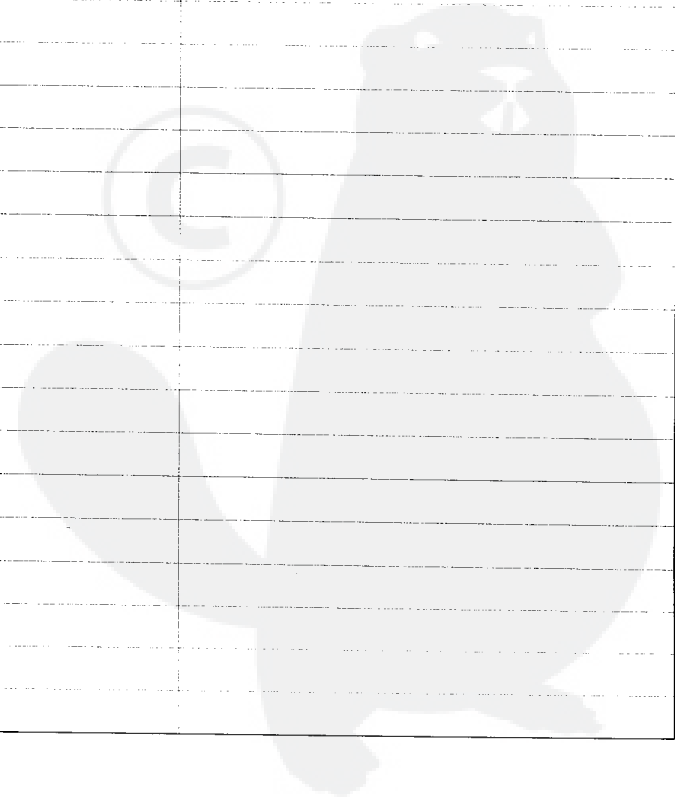
Group:Chain Saws Model:CS-2600(6digits)(35)(36) Section:Carburetor(Sr/Nr 35049497 and before)(11)

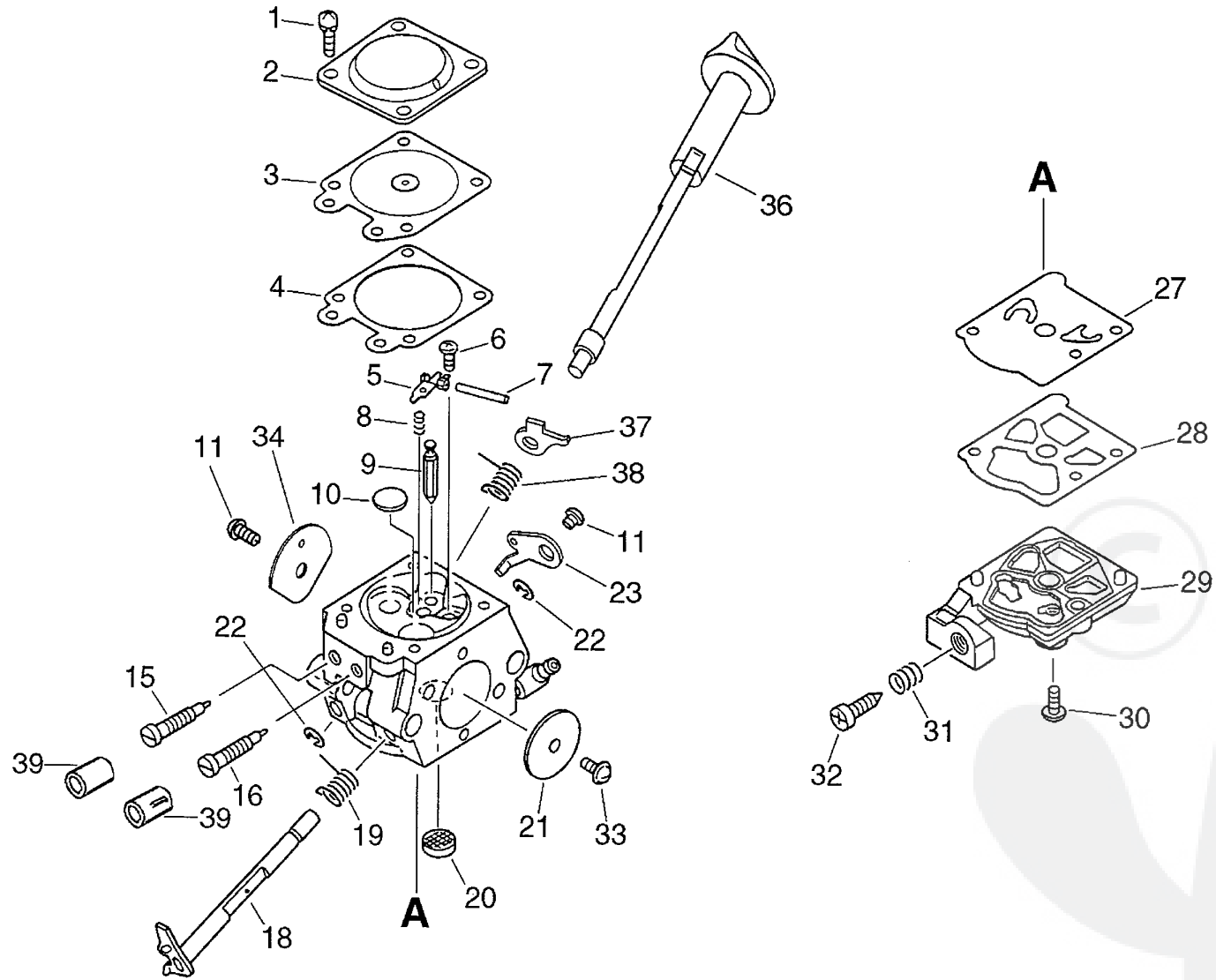
Key	Lv	Part Number	Q'ty	Description	Remarks	Note
		A021-000210	1	CARBURETOR, DIAPHRAGM	Sus. by A021-000211	
		A021-000211	1	CARBURETOR, DIAPHRAGM		
1	+	123130-02960	4	SCREW		
2	+	123142-03930	1	COVER, M. DIAPHRAGM		
3	+	123141-03930	1	DIAPHRAGM, METERING		
4	+	123140-27230	1	GASKET, M. DIAPHRAGM		
5	+	123123-03930	1	LEVER, METERING		
6	+	123139-03930	1	SCREW, M. LEVER PIN		
7	+	123138-03930	1	PIN, METERING LEVER		
8	+	123122-39830	1	SPRING, METER. LEVER	Sus. by 123122-03660	
8	+	123122-03660	1	SPRING, METER. LEVER		
9	+	123137-19830	1	VALVE, INLET NEEDLE		
10	+	123146-10631	1	PLUG, WELCH		
11	+	123114-03930	1	SCREW	Sus. by 123114-38830	
11	+	123114-38830	1	SCREW		
14	+	123119-22130	1	SPRING, NEEDLE		
15	+	P003-000390	1	NEEDLE, HIGH SPEED		
16	+	123118-38330	1	NEEDLE, IDLE		
17	+	123121-22130	1	SPRING, NEEDLE		
18	+	P003-000370	1	SHAFT, THROTTLE		
19	+	123113-37530	1	SPRING, THROTTLE RTN		
20	+	123126-10631	1	SCREEN, INLET		
21	+	123116-05960	1	VALVE, THROTTLE		
22	+	123127-15030	2	RING		
23	+	P003-000380	1	THROTTLE, LEVER		
27	+	123112-15030	1	DIAPHRAGM, FUEL PUMP		
28	+	123125-15030	1	GASKET, FUEL PUMP		
29	+	123124-09520	1	COVER, FUEL PUMP	Sus. by 123124-24430	

Parts List

Group:Chain Saws Model:CS-2600(6digits)(35)(36) Section:Carburetor(Sr/Nr 35049497 and before)(11)

Key	Lv	Part Number	Q'ty	Description	Remarks	Note
29	+	123124-24430	1	COVER, FUEL PUMP		
30	+	123110-03930	1	SCREW, PUMP COVER		
31	+	123133-04260	1	SPRING, IDLE ADJUST		
32	+	123134-04260	1	SCREW, IDLE ADJUST		
33	+	123114-05260	1	SCREW		
34	+	P003-000410	1	VALVE CHOKE		
35	+	123114-38830	1	SCREW		
36	+	P003-000400	1	SHAFT-CHOKE(MOLD)		
37	+	P003-000430	1	LEVER-FAST IDLE		
38	+	P003-000420	1	SPRING		





Parts List

Group:Chain Saws Model:CS-2600(6digits)(35)(36) Section:Carburetor(Sr/Nr 36001001 and after)(12)

Key	Lv	Part Number	Q'ty	Description	Remarks	Note
		A021-000970	1	CARBURETOR,DIAPHRAGM	Sus. by A021-000973	
		A021-000972	1	CARBURETOR,DIAPHRAGM	Sus. by A021-000973	
		A021-000973	1	CARBURETOR,DIAPHRAGM		
1	+	123130-02960	4	SCREW		
2	+	123142-03930	1	COVER, M. DIAPHRAGM		
3	+	123141-03930	1	DIAPHRAGM, METERING		
4	+	123140-27230	1	GASKET,M. DIAPHRAGM		
5	+	123123-38330	1	LEVER, METERING		
6	+	123139-03930	1	SCREW, M. LEVER PIN		
7	+	123138-03930	1	PIN, METERING LEVER		
8	+	123122-03660	1	SPRING, METER. LEVER		
9	+	123137-19830	1	VALVE, INLET NEEDLE		
10	+	123146-10631	1	PLUG, WELCH		
11	+	123114-38830	2	SCREW		
15	+	123118-02261	1	NEEDLE, IDLE		
16	+	123120-52131	1	NEEDLE, HIGH SPEED		
18	+	P003-001300	1	SHAFT, THROTTLE		
19	+	123113-37530	1	SPRING, THROTTLE RTN		
20	+	123126-10631	1	SCREEN, INLET		
21	+	123116-05960	1	VALVE, THROTTLE		
22	+	123127-15030	2	RING		
23	+	P003-000380	1	THROTTLE, LEVER		
27	+	123112-15030	1	DIAPHRAGM, FUEL PUMP		
28	+	123125-15030	1	GASKET, FUEL PUMP		
29	+	123124-24430	1	COVER, FUEL PUMP		
30	+	123110-03930	1	SCREW, PUMP COVER		
31	+	123133-04260	1	SPRING, IDLE ADJUST		
32	+	123134-04260	1	SCREW, IDLE ADJUST		

Parts List

Group:Chain Saws Model:CS-2600(6digits)(35)(36) Section:Carburetor(Sr/Nr 36001001 and after)(12)

Key	Lv	Part Number	Q'ty	Description	Remarks	Note
33	+	123114-05260	1	SCREW		
34	+	P003-000410	1	VALVE CHOKE	Sr/Nr 36003010 and before	
34	+	123132-35430	1	VALVE CHOKE	Sr/Nr 36003011 and after	
36	+	P003-000400	1	SHAFT-CHOKE(MOLD)		
37	+	P003-000430	1	LEVER-FAST IDLE	Sr/Nr 36003010 and before	
37	+	P003-001480	1	LEVER-FAST IDLE	Sus. by P003-001510	
37	+	P003-001510	1	LEVER-FAST IDLE	Sr/Nr 36003011 and after	
38	+	P003-000420	1	SPRING	Sr/Nr 36003010 and before	
38	+	P003-001470	1	SPRING	Sr/Nr 36003011 and after	
39	+	P003-000010	2	LIMITER CAP		

