

P a r t s L i s t

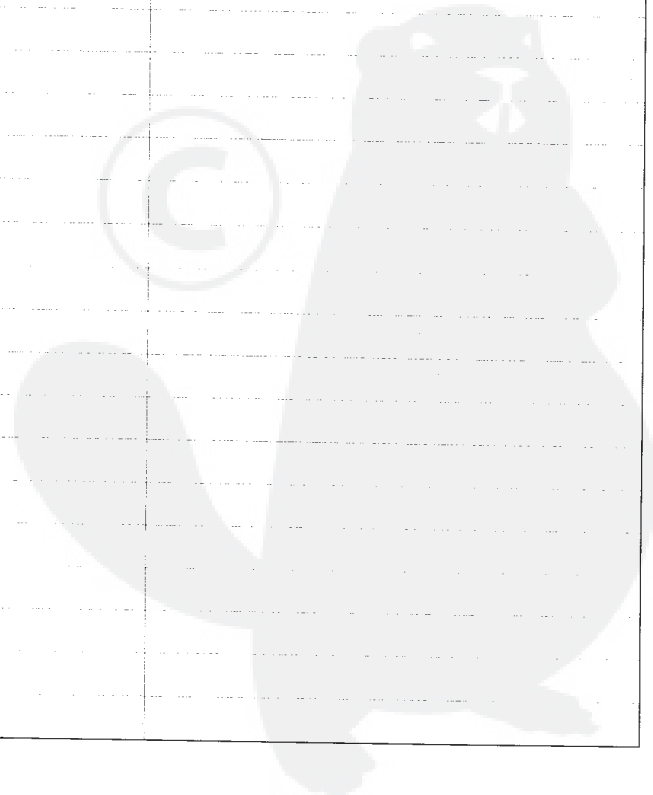
Group:Chain Saws Model:CS-350TES(20) Section:Cylinder, Crankcase, Piston(1)

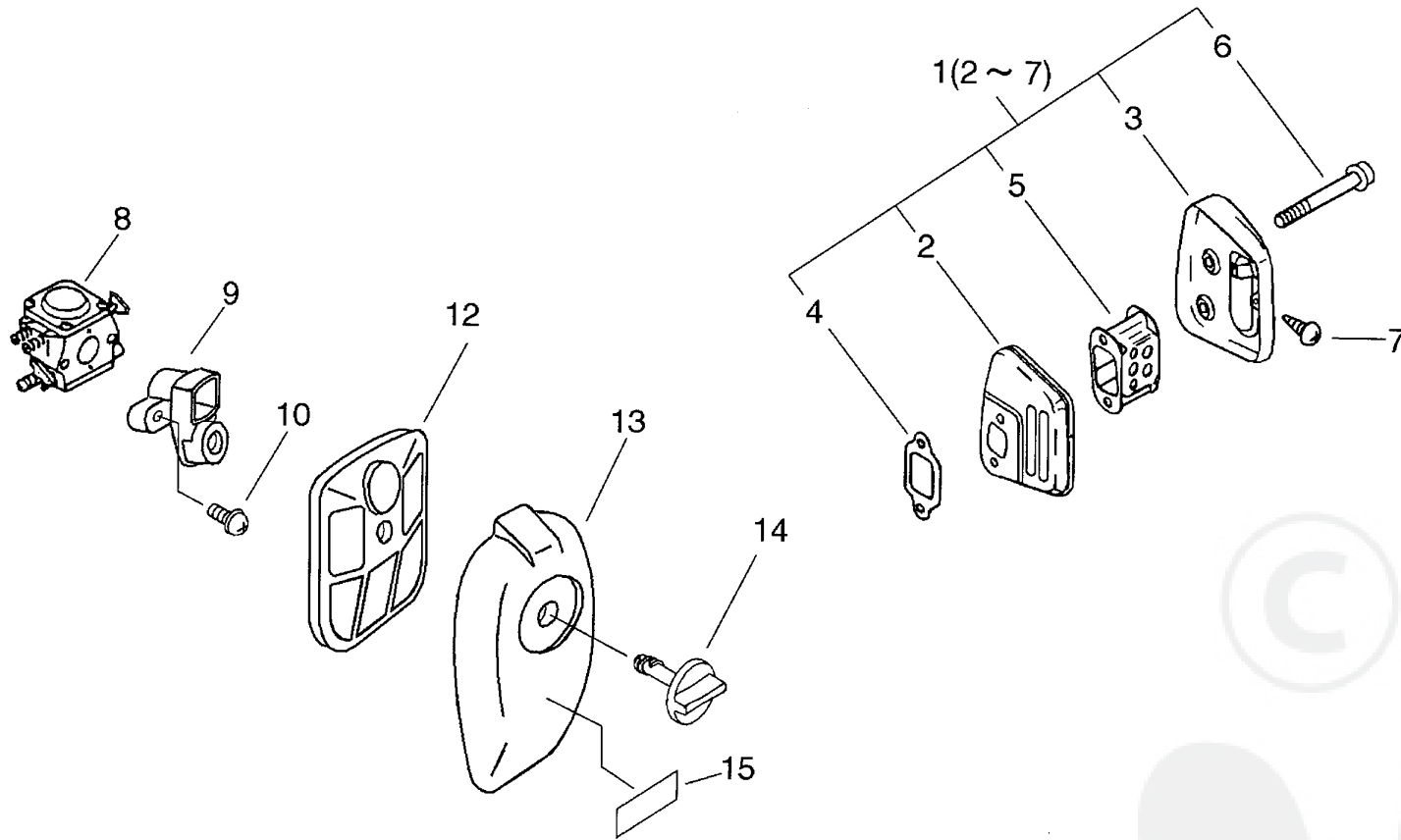
Key	Lv	Part Number	Q'ty	Description	Remarks	Note
1		P021-009250	1	CRANKCASE SET		
2	+	900162-05025	4	BOLT, H.S. 5*25		
3		P021-009230	1	PISTON KIT		
4	+	A101-000120	1	RING, PISTON		
5	+	100013-15330	1	PIN, PISTON		
6	+	100015-04630	2	CIRCLIP, PISTON PIN		
7	+	100014-60930	2	SPACER, PISTON PIN		
8	+	V553-000040	1	BEARING, NEEDLE 8		
9		P021-010701	1	CRANKSHAFT ASY		
10	+	94035-36201	2	BEARING BALL		
11	+	V505-000010	2	SEAL, OIL 12		
15		C305-000080	1	PLATE, SPROCKET GUARD		
17		433011-03931	2	STUD, GUIDE BAR		
18		900253-04010	1	SCREW 4*10		
19		900106-05020	2	BOLT, H.S. 5*20		
20		A127-000050	1	COVER, DUST		
21		900253-04012	2	SCREW		
22		163911-30130	1	PLUG		
23		P021-008676	1	COVER, ENGINE KIT		
24	+	900106-05030	2	BOLT, H.S.H. 5*30		
25	+	900724-00004	1	O-RING (S-4)		
26		900253-05020	1	SCREW 5*20		
27		C304-000000	1	SPIKE		
28		900253-05020	1	SCREW 5*20		
30		100142-12330	1	KEY, WOODRUFF		
32		V359-000060	1	COLLAR, 16		
34		91420-05012	2	SCREW		
35		V470-000481	1	PIPE		

Parts List

Group:Chain Saws Model:CS-350TES(20) Section:Cylinder, Crankcase, Piston(1)

Key	Lv	Part Number	Q'ty	Description	Remarks	Note
36		433026-35430	1	CATCHER, CHAIN		

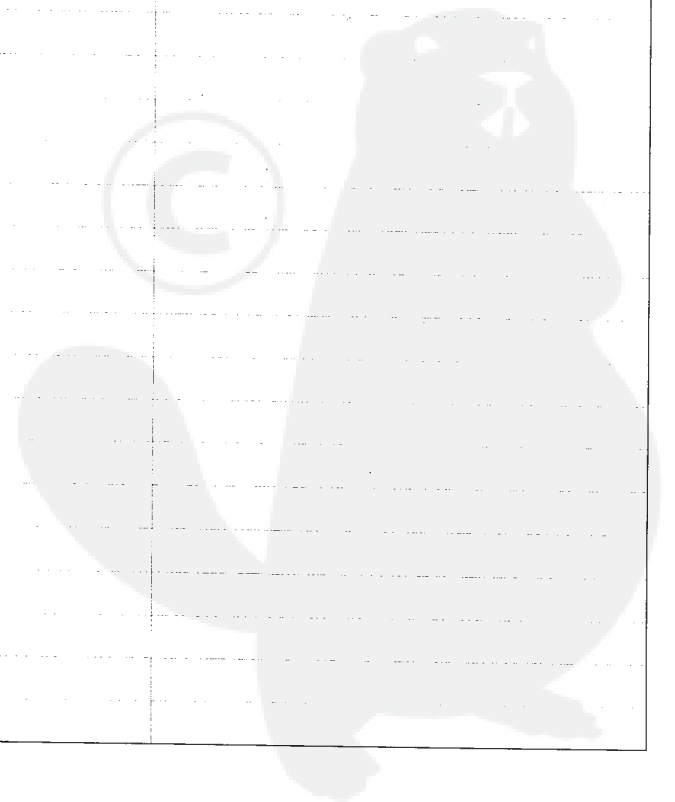


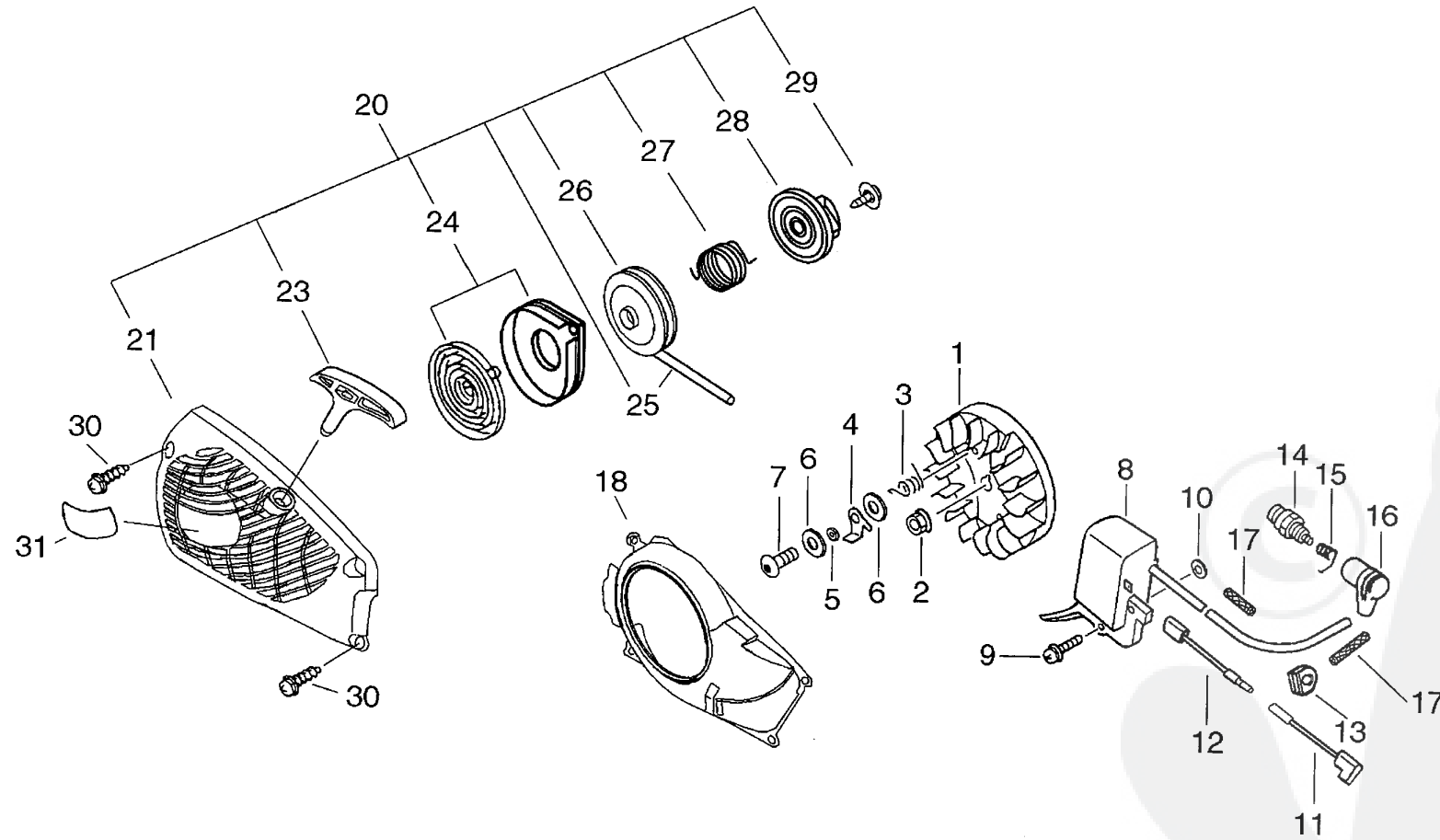


P a r t s L i s t

Group:Chain Saws Model:CS-350TES (20) Section:Air Cleaner, Carburetor, Muffler(2)

Key	Lv	Part Number	Q'ty	Description	Remarks	Note
1		P021-009930	1	MUFFLER ASY		
2	+	A300-000370	1	MUFFLER, EXHAUST		
3	+	A303-000041	1	LID, MUFFLER		
4	+	145510-13931	1	GASKET, MUFFLER		
5	+	A301-000000	1	PLATE, MUFFLER		
6	+	91107-05040	2	BOLT HSH FLANGE		
7	+	900250-04008	1	SCREW 4*8		
8		A021-001181	1	CARBURETOR, DIAPHRAGM		
9		A204-000041	1	ELBOW, CARBURETOR		
10		900238-05050	2	SCREW 5*50		
12		A226-000291	1	ELEMENT, AIR FILTER		
13		A232-000160	1	LID, CLEANER		
14		A235-000040	1	KNOB, CLEANER LID		
15		X503-006190	1	LABEL, MODEL		



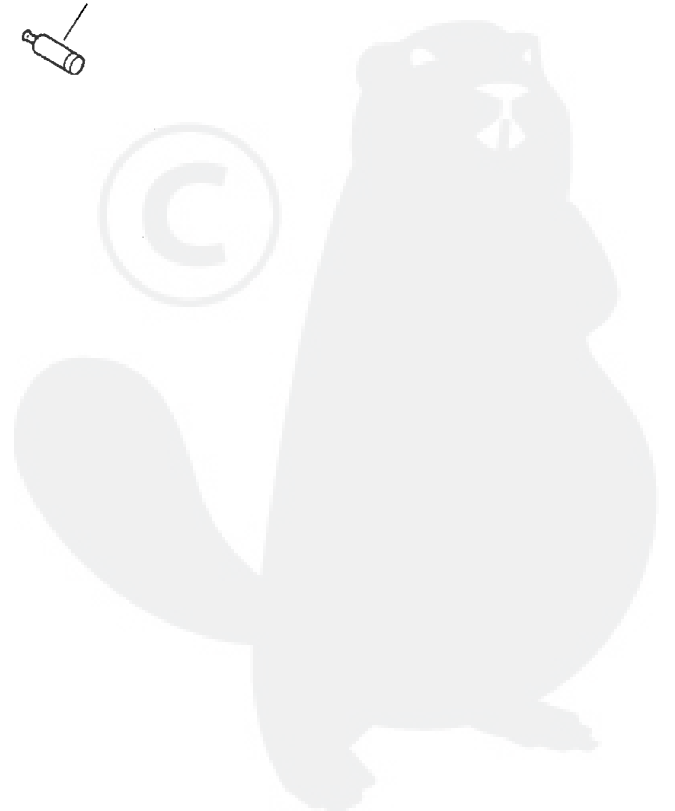
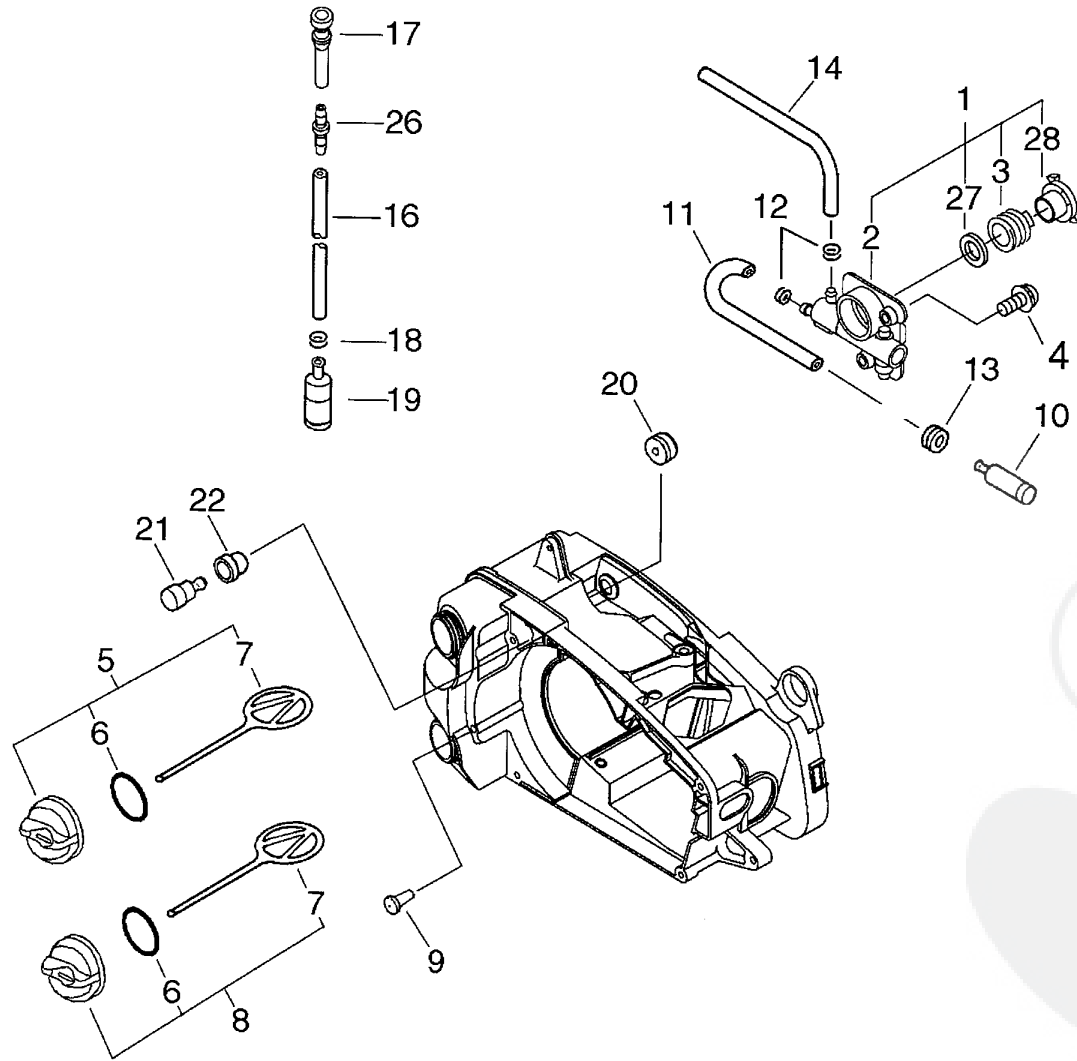


Parts List

Group:Chain Saws Model:CS-350TES(20) Section:Starter, Magneto(3)

Date:15/03/2010 Page: 1

Key	Lv	Part Number	Q'ty	Description	Remarks	Note
1		A409-000170	1	ROTOR, MAGNETO		
2		900515-00008	1	NUT, FLANGE 8		
3		177234-35430	2	SPRING, RETURN		
4		A514-000020	2	PAWL		
5		177247-04630	2	SPACER, RATCHET		
6		900603-00005	4	WASHER 5		
7		V203-000080	2	BOLT, 5		
8		A411-000150	1	COIL, IGNITION		
9		900238-05022	2	SCREW 5*22		
10		150117-16430	2	SPACER		
11		162010-55930	1	LEARD, GROUND		
12		V485-000140	1	LEAD		
13		156110-04920	1	BUSHING		
14		159010-10630	1	PLUG, SPARK (BPM-7A)		
15		A426-000010	1	TERMINAL, SPARKPLUG		
16		A427-000013	1	CAP, SPARK PLUG		
17		V475-002390	2	TUBE		
18		A172-000501	1	COVER, FAN		
20		A051-000792	1	STARTER, RECOIL		
21	+	P022-008771	1	STARTER, RECOIL		
23	+	P022-005891	1	GRIP, STARTER		
24	+	P022-001330	1	SPRING KIT, REWIND		
25	+	P022-008440	1	ROPE, STARTER		
26	+	A506-000030	1	REEL, ROPE		
27	+	V452-000220	4	SPRING, TORSION		
28	+	P022-022000	1	CATCHER, PAWL		
29	+	177236-61830	1	SCREW		
30		900256-04016	4	SCREW 4*16		

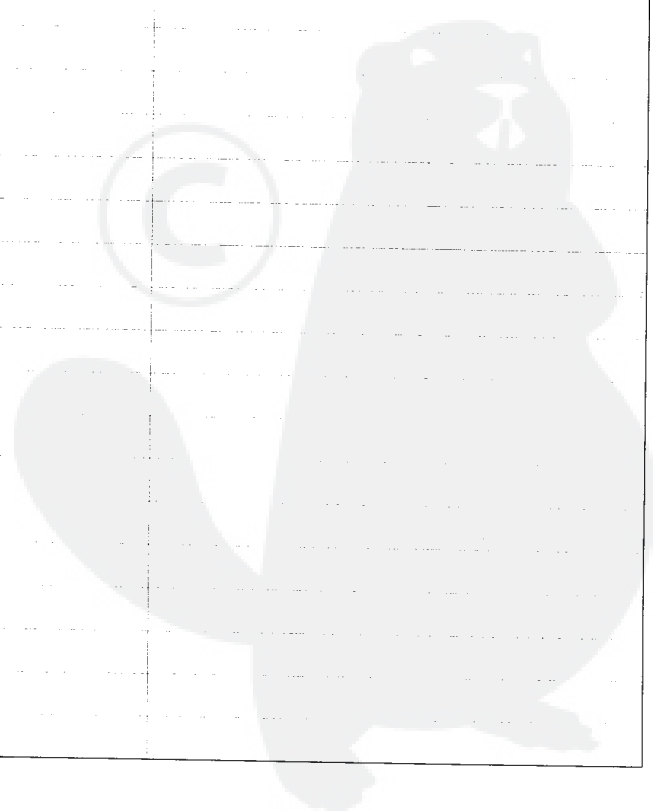


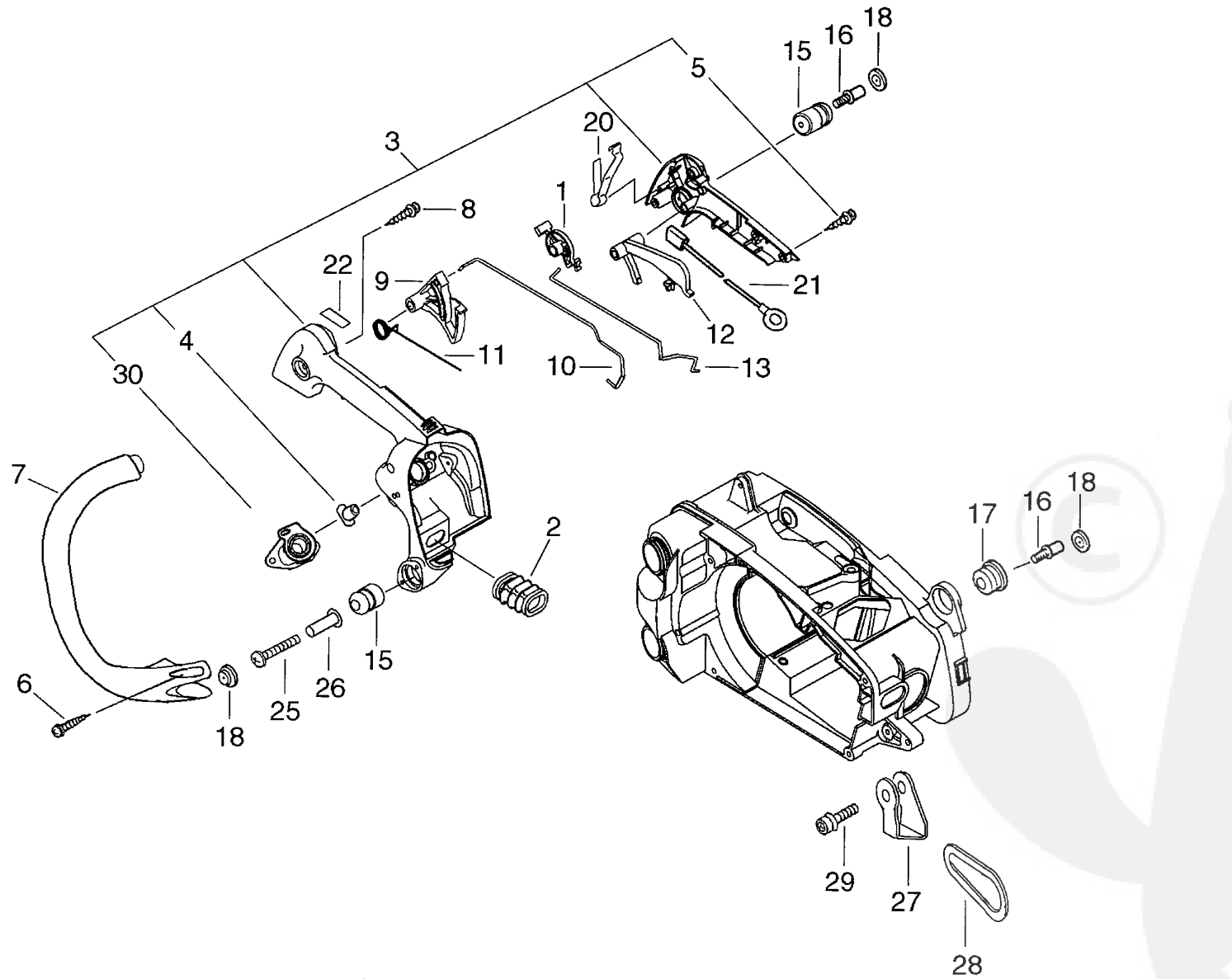
P a r t s L i s t

Group:Chain Saws Model:CS-350TES(20) Section:Auto-Oiler(4)

Date:15/03/2010 Page: 1

Key	Lv	Part Number	Q'ty	Description	Remarks	Note
1		P021-001980	1	AUTO-OILER ASY		
2	+	C022-000020	1	AUTO-OILER ASSEMBLY		
3	+	V652-000030	1	GEAR, WORM		
27	+	V308-000030	1	WASHER, CIRCULAR 11		
28	+	V356-000290	1	COLLAR, 10		
4		900238-04012	2	SCREW 4*12		
5		P021-005591	1	FUEL CAP ASY		
6	+	900720-00018	1	O-RING 18		
7	+	A365-000050	1	CONNECTOR, CAP		
8		P021-005581	1	OIL CAP ASY		
6	+	900720-00018	1	O-RING 18		
7	+	A365-000050	1	CONNECTOR, CAP		
9		436114-13930	1	VALVE, CHECK		
10		436205-02832	1	STRAINER, OIL		
11		V471-000740	1	PIPE		
12		132013-26630	2	CLIP		
13		132115-01461	1	GROMMET		
14		V471-000760	1	PIPE		
16		V471-000750	1	PIPE		
17		V470-000320	1	PIPE		
18		132013-09820	1	CLIP		
19		131205-14930	1	STRAINER, FUEL		
20		V137-000020	1	GROMMET, FUEL		
21		131300-56430	1	VALVE, CHECK		
22		V137-000000	1	GROMMET, FUEL		
26		V186-000020	1	JOINT, PIPE		



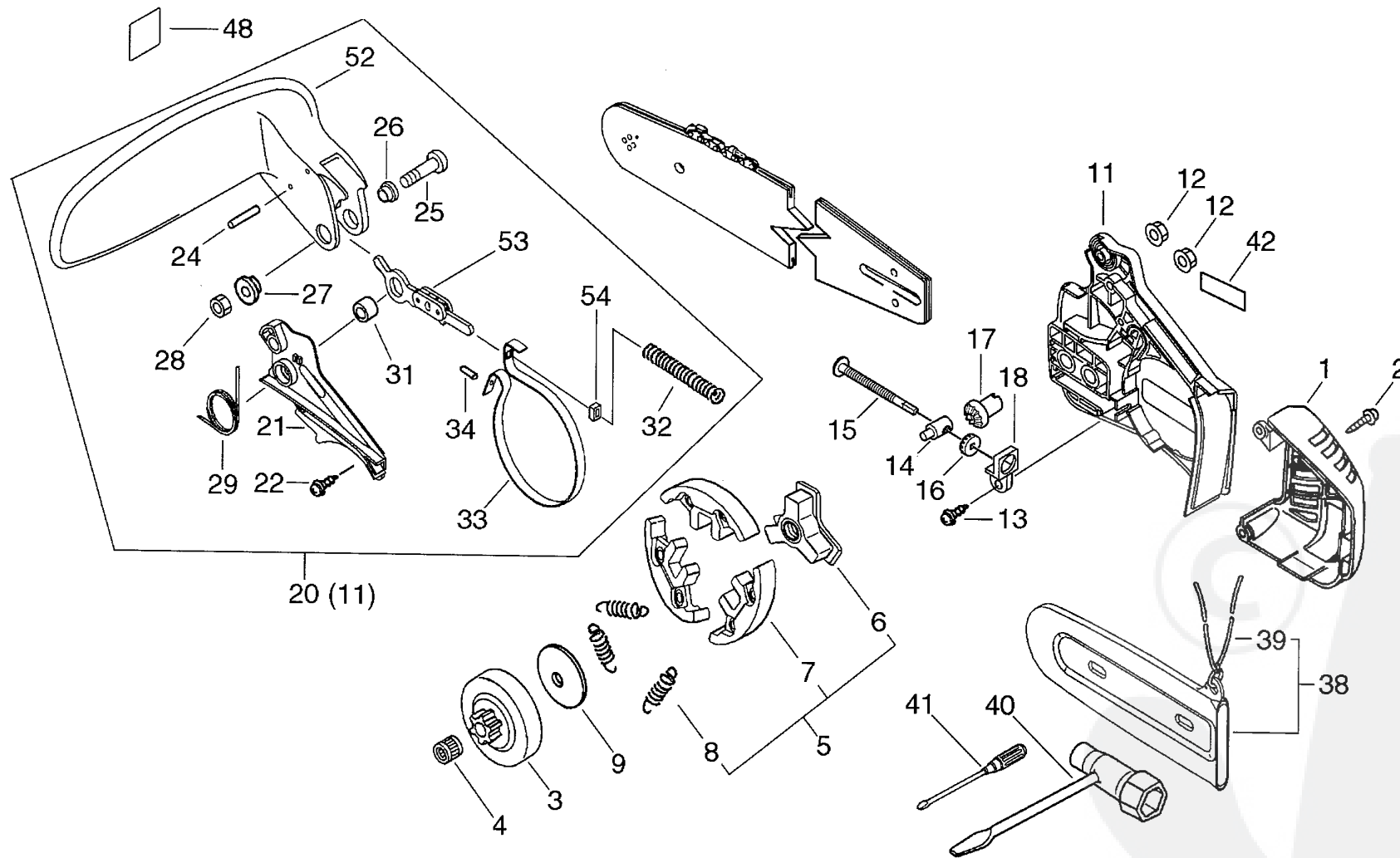


Parts List

Group:Chain Saws Model:CS-350TES(20) Section:Handle(5)

Date:15/03/2010 Page: 1

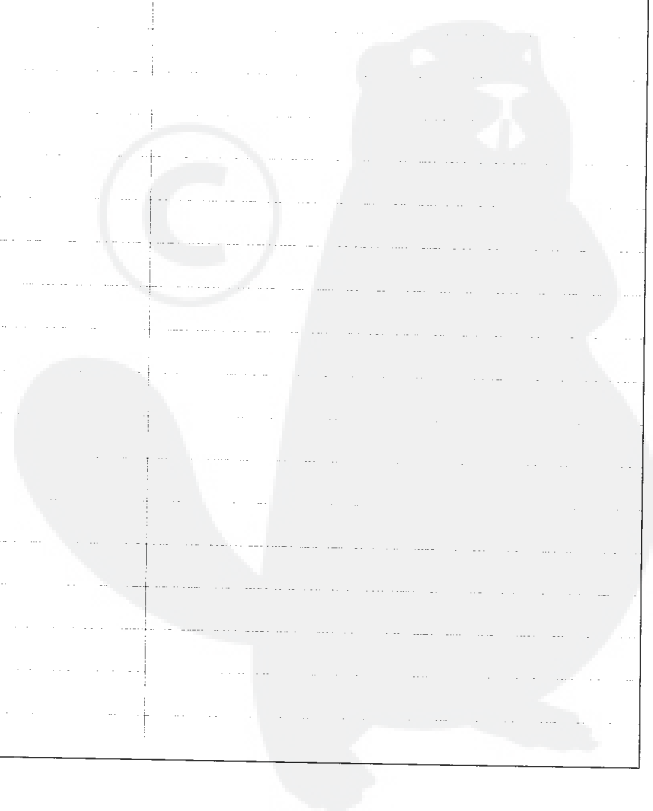
Key	Lv	Part Number	Q'ty	Description	Remarks	Note
1		A253-000043	1	LEVER, CONTROL		
2		A239-000000	1	PIPE, INTAKE		
3		P021-011510	1	HANDLE, REAR		
30	+	A202-000033	1	BELLOWS, INTAKE		
4	+	130020-33330	2	NUT		
5	+	900256-04016	4	SCREW 4*16		
6		900256-04016	2	SCREW 4*16		
7		C400-000160	1	HANDLE, FRONT		
8		900253-05020	1	SCREW 5*20		
9		C450-000010	1	TRIGGER, THROTTLE		
10		C454-000070	1	ROD, THROTTLE		
11		V452-000010	1	SPRING, TORSION		
12		C460-000002	1	LOCKOUT, THROTTLE		
13		A240-000010	1	ROD, CHOKE		
15		V400-000070	2	CUSHION, 4		
16		V202-000000	2	BOLT, 4		
17		100910-18830	1	CUSHION		
18		100918-15130	3	CAP		
20		V486-000010	1	TERMINAL, LEAD		
21		V485-000340	1	LEAD		
22		X524-000910	1	LABEL		
25		91481-04035	1	SCREW TAPPING		
26		V352-000020	1	COLLAR, 4		
27		C626-000040	1	FIXTURE, HARNESS		
28		C646-000040	1	RING, HARNESS		
29		900162-04025	1	BOLT, H.S. 4*25		



Parts List

Group:Chain Saws Model:CS-350TES(20) Section:Clutch, Sprocket(6)

Key	Lv.	Part Number	Q'ty	Description	Remarks	Note
1		A320-000183	1	COVER,MUFFLER		
2		900253-04016	2	SCREW 4*16		
3		175005-39132	1	DRUM, CLUTCH		
4		175012-00831	1	BEARING, NEEDLE		
5		A056-000070	1	CLUTCH		
6	+	A552-000020	1	HUB,CLUTCH		
7	+	P021-005810	1	CLUTCH SHOE SET		
8	+	V451-000470	3	SPRING,TENSION		
9		A551-000010	1	PLATE,CLUTCH		
12		433019-03933	2	NUT, FLANGE 6		
13		900253-04012	1	SCREW		
14		C309-000030	1	TENSIONER,CHAIN		
15		V203-000041	1	BOLT, 5		
16		V651-000011	1	GEAR, BEVEL		
17		V651-000001	1	GEAR, BEVEL		
18		V355-000140	1	COLLAR, 8		
20		C032-000205	1	BRAKE,ASM CHAIN	Sus. by C032-000206	
20		C032-000206	1	BRAKE,ASM CHAIN		
11	+	C300-000242	1	GUARD, SPROCKET		
21	+	C345-000084	1	COVER, BRAKE		
22	+	900253-04012	3	SCREW		
24	+	900330-30260	2	ROLLER 3*26		
25	+	91318-05032	1	SCREW		
26	+	433167-39130	1	SPACER		
27	+	V353-000060	1	COLLAR, 5		
28	+	900562-50005	1	LOCKNUT 5		
29	+	V452-000110	1	SPRING, TORSION		
31	+	433116-35430	1	SPACER 8		

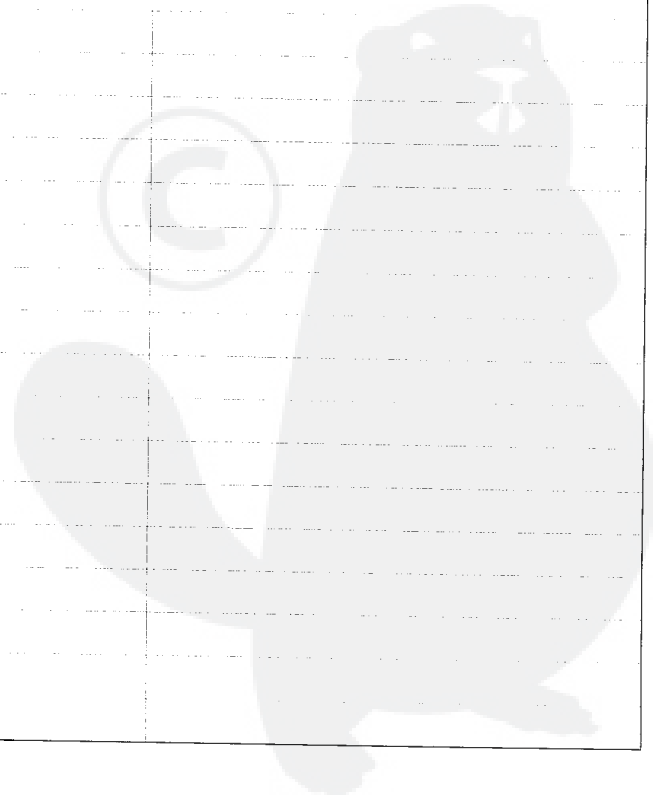


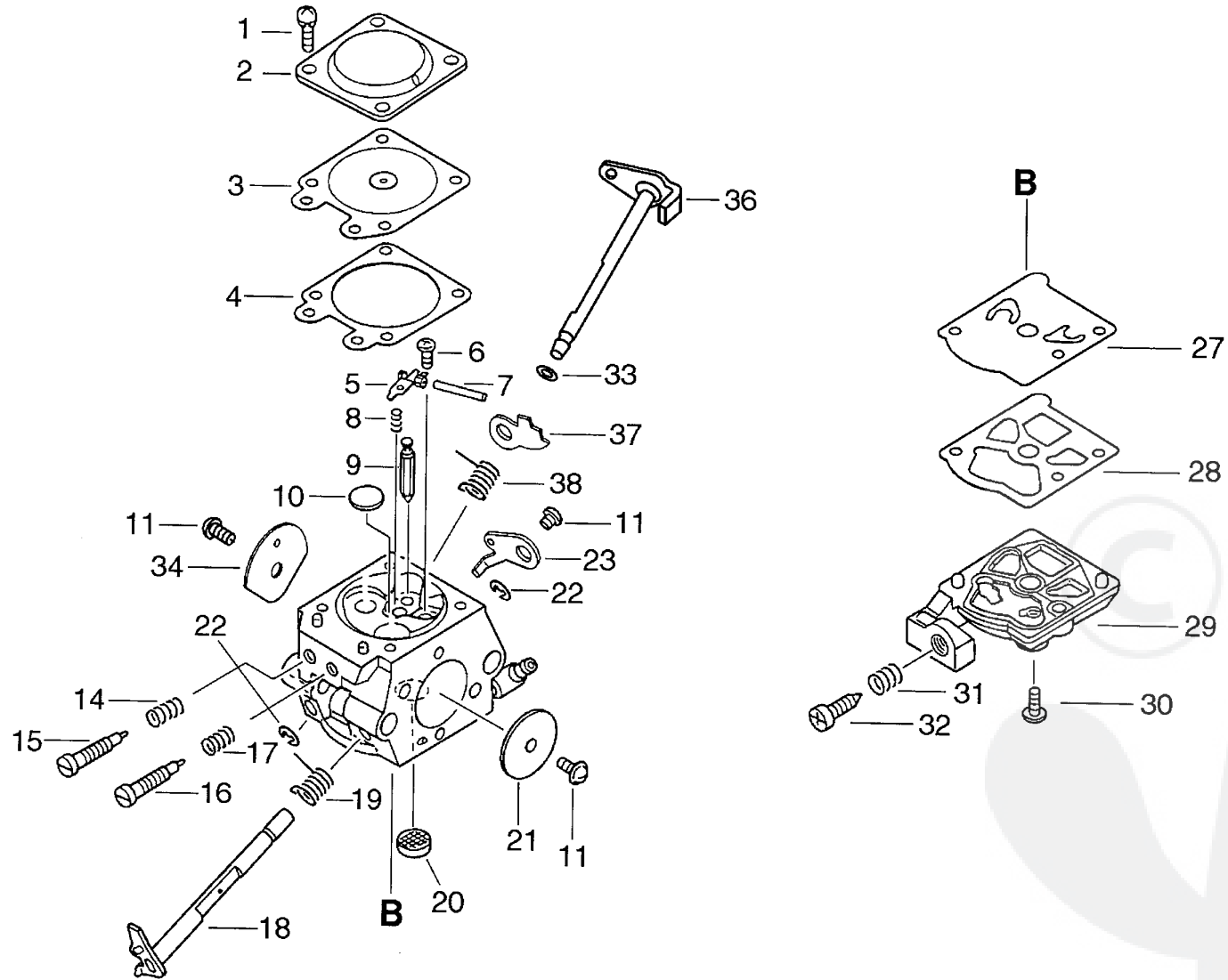
P a r t s L i s t

Group:Chain Saws Model:CS-350TES(20) Section:Clutch, Sprocket(6)

Date:15/03/2010 Page: 2

Key	Lv	Part Number	Q'ty	Description	Remarks	Note
32	+	V450-000070	1	SPRING, COMPRESSION		
33	+	C328-000030	1	BAND, BRAKE		
34	+	93050-30098	1	ROLLER		
52	+	C320-000033	1	LEVER, BRAKE	Sus. by C320-000034	
52	+	C320-000034	1	LEVER, BRAKE		
53	+	C334-000070	1	CONNECTOR, BRAKE		
54	+	V376-000450	1	SPACER		
38		P021-006951	1	SCABBARD, CHAIN		
39	+	898568-14530	1	ROPE		
40		895410-03930	1	WRENCH, W/S. DRIVER		
41		895812-03930	1	DRIVER, SCREW 50		
42		X502-000340	1	LABEL, ECHO		
48		X505-000370	1	LABEL, CAUTION	Sus. by X505-002440	
48		X505-002440	1	LABEL, CAUTION		





Parts List

Group:Chain Saws Model:CS-350TES (20) Section:Carburetor(7)

Date:15/03/2010 Page: 1

Key	Lv	Part Number	Q'ty	Description	Remarks	Note
		A021-001181	1	CARBURETOR, DIAPHRAGM		
1	+	123130-02960	4	SCREW		
2	+	123142-03930	1	COVER, M. DIAPHRAGM		
3	+	123141-03930	1	DIAPHRAGM, METERING		
4	+	123140-27230	1	GASKET, M. DIAPHRAGM		
5	+	123123-03930	1	LEVER, METERING		
6	+	123139-03930	1	SCREW, M. LEVER PIN		
7	+	123138-03930	1	PIN, METERING LEVER		
8	+	123122-39830	1	SPRING, METER. LEVER		
9	+	123137-19830	1	VALVE, INLET NEEDLE		
10	+	123146-10631	1	PLUG, WELCH		
11	+	123114-38830	3	SCREW		
14	+	123119-22130	1	SPRING, NEEDLE		
15	+	P003-001340	1	NEEDLE POWER		
16	+	P003-001330	1	NEEDLE IDLE		
17	+	123121-22130	1	SPRING, NEEDLE		
18	+	P003-000480	1	SHAFT, THROTTLE		
19	+	123113-37530	1	SPRING, THROTTLE RTN		
20	+	123126-10631	1	SCREEN, INLET		
21	+	123116-10530	1	VALVE, THROTTLE		
22	+	123127-15030	2	RING		
23	+	P003-000380	1	THROTTLE, LEVER		
27	+	123112-15030	1	DIAPHRAGM, FUEL PUMP		
28	+	123125-15030	1	GASKET, FUEL PUMP		
29	+	123124-24430	1	COVER, FUEL PUMP		
30	+	123110-03930	1	SCREW, PUMP COVER		
31	+	123133-04260	1	SPRING, IDLE ADJUST		
32	+	123134-04260	1	SCREW, IDLE ADJUST		

Parts List

Group:Chain Saws Model:CS-350TES(20) Section:Carburetor(7)

Date:15/03/2010 Page: 2

Key	Lv	Part Number	Q'ty	Description	Remarks	Note
33	+	123149-26030	1	WASHER		
34	+	123132-35430	1	VALVE, CHOKE		
36	+	P003-001140	1	SHAFT, CHOKE		
37	+	P003-001510	1	LEVER-FAST IDLE		
38	+	P003-001470	1	SPRING		

