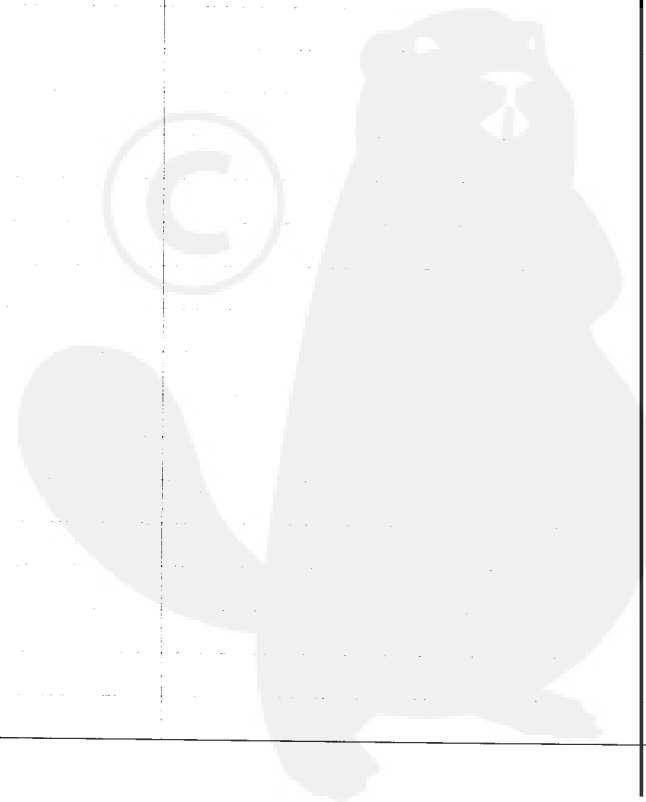


P a r t s L i s t

Group:Chain Saws Model:CS-350WES(36) Section:Cylinder, Crankcase, Piston(1)

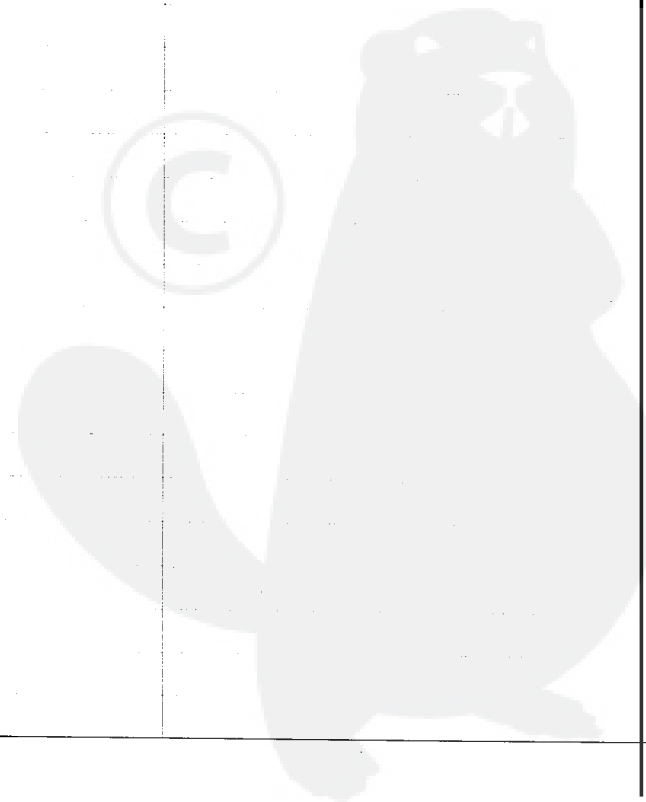
| Key | Lv | Part Number | Q'ty | Description | Remarks | Note |
|-----|----|--------------|------|-----------------------|----------------------------|------|
| 1 | | P021-004921 | 1 | CRANKCASE SET | Sus. by P021-009250 | |
| 1 | | P021-009250 | 1 | CRANKCASE SET | | |
| 2 | + | 900162-05025 | 4 | BOLT, H.S. 5*25 | | |
| 3 | | P021-004932 | 1 | PISTON KIT | Sus. by P021-009230 | |
| 3 | | P021-009230 | 1 | PISTON KIT | | |
| 4 | + | 100011-13330 | 1 | RING, PISTON | Sus. by A101-000120 | |
| 4 | + | A101-000120 | 1 | RING, PISTON | | |
| 5 | + | 100013-15330 | 1 | PIN, PISTON | | |
| 6 | + | 100015-04630 | 2 | CIRCLIP, PISTON PIN | | |
| 7 | + | 100014-60930 | 2 | SPACER, PISTON PIN | | |
| 8 | + | V553-000040 | 1 | BEARING, NEEDLE 8 | | |
| 9 | | P021-004940 | 1 | CRANKSHAFT ASY | Sus. by P021-004941 | |
| 9 | | P021-004941 | 1 | CRANKSHAFT ASY | Sr/Nr 36004400 and before | |
| 9 | | P021-005511 | 1 | CRANKSHAFT ASY | Sr/Nr 36004401 to 36015370 | |
| 9 | | P021-010701 | 1 | CRANKSHAFT ASY | Sr/Nr 36020001 and after | |
| 10 | + | 94035-36201 | 2 | BEARING BALL | | |
| 11 | + | V505-000010 | 2 | SEAL, OIL 12 | | |
| 12 | + | V652-000010 | 1 | GEAR, WORM | Sr/Nr 36015370 and before | |
| 15 | | C305-000070 | 1 | PLATE, SPROCKET GUARD | Sus. by C305-000080 | |
| 16 | | V420-001110 | 1 | CUSHION | | |
| 17 | | 433011-03931 | 2 | STUD, GUIDE BAR | | |
| 18 | | 900253-04010 | 1 | SCREW 4*10 | | |
| 19 | | 900106-05020 | 2 | BOLT, H.S. 5*20 | | |
| 20 | | P021-008740 | 1 | DUSTCOVER SET | Sus. by P021-008741 | |
| 20 | | P021-008741 | 1 | DUSTCOVER SET | | |
| 21 | + | V341-000040 | 1 | WASHER, SQUARE | | |
| 22 | | 163911-30130 | 1 | PLUG | | |
| 23 | | P021-008670 | 1 | COVER ENGINE | Sus. by P021-008676 | |

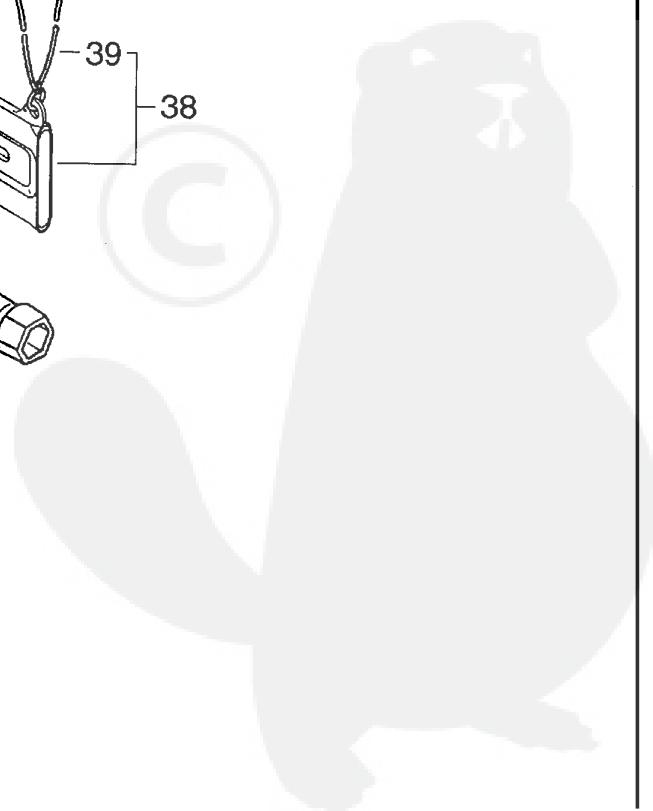
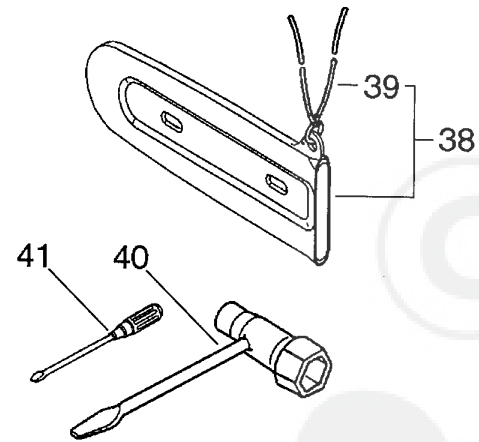
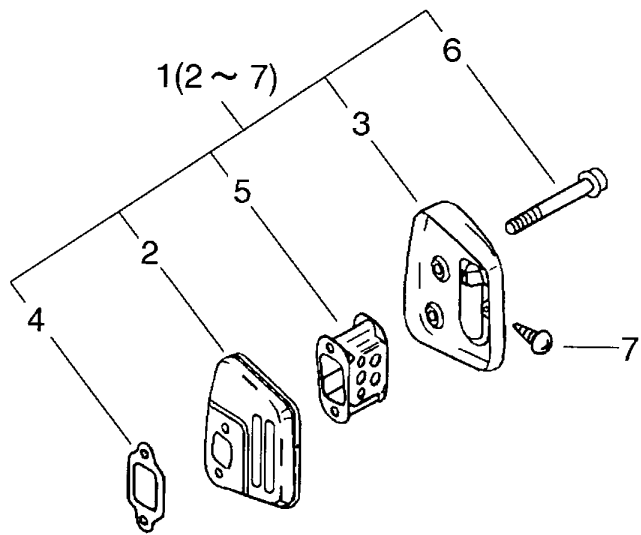


P a r t s L i s t

Group:Chain Saws Model:CS-350WES(36) Section:Cylinder, Crankcase, Piston(1)

| Key | Lv | Part Number | Q'ty | Description | Remarks | Note |
|-----|----|--------------|------|---------------------|---------------------------|------|
| 23 | | P021-008671 | 1 | COVER ENGINE | Sus. by P021-008676 | |
| 23 | | P021-008672 | 1 | COVER ENGINE | Sus. by P021-008676 | |
| 23 | | P021-008673 | 1 | COVER ENGINE | Sus. by P021-008676 | |
| 23 | | P021-008674 | 1 | COVER ENGINE | Sus. by P021-008676 | |
| 23 | | P021-008675 | 1 | COVER ENGINE | Sus. by P021-008676 | |
| 23 | | P021-008676 | 1 | COVER ENGINE | | |
| 24 | | 900106-05020 | 2 | BOLT, H.S. 5*20 | Sr/Nr 36001850 and before | |
| 24 | + | 900106-05030 | 2 | BOLT, H.S. 5*30 | Sr/Nr 36001851 and after | |
| 25 | + | 433026-35430 | 1 | O-RING (S-4) | Sr/Nr 36003701 and after | |
| 26 | | 900253-05020 | 1 | SCREW 5*20 | | |
| 27 | | C304-000000 | 1 | SPIKE | | |
| 28 | | 900253-05020 | 1 | SCREW 5*20 | | |
| 29 | | 900253-04012 | 2 | SCREW | | |
| 30 | | 100142-12330 | 1 | KEY, WOODRUFF | | |
| 31 | | P021-005732 | 1 | BELLOWS, INTAKE KIT | Sr/Nr 36023860 and before | |
| 32 | + | 91420-05012 | 2 | SCREW | | |
| 34 | | V359-000060 | 1 | COLLAR, 16 | | |
| 35 | | V470-000481 | 1 | PIPE | | |
| 36 | | 433026-35430 | 1 | CATCHER, CHAIN | | |

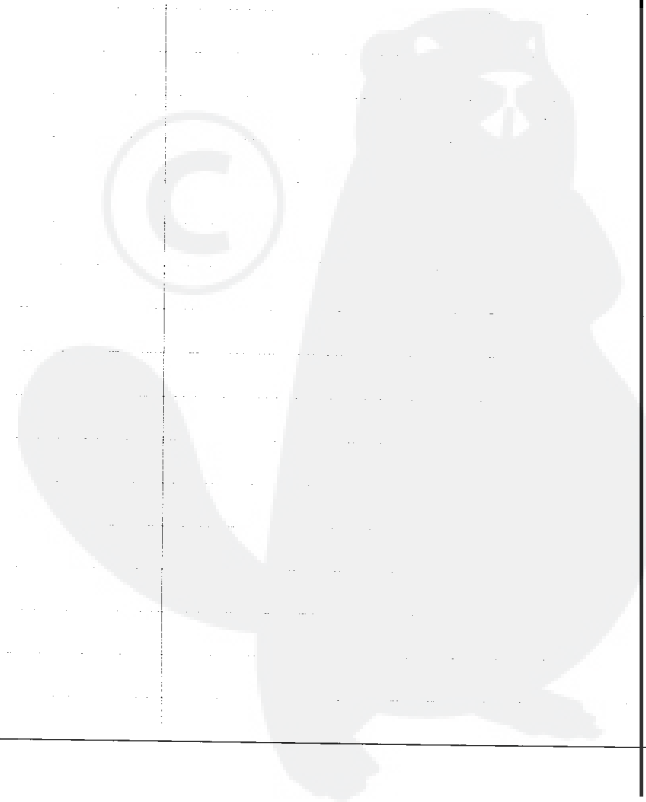


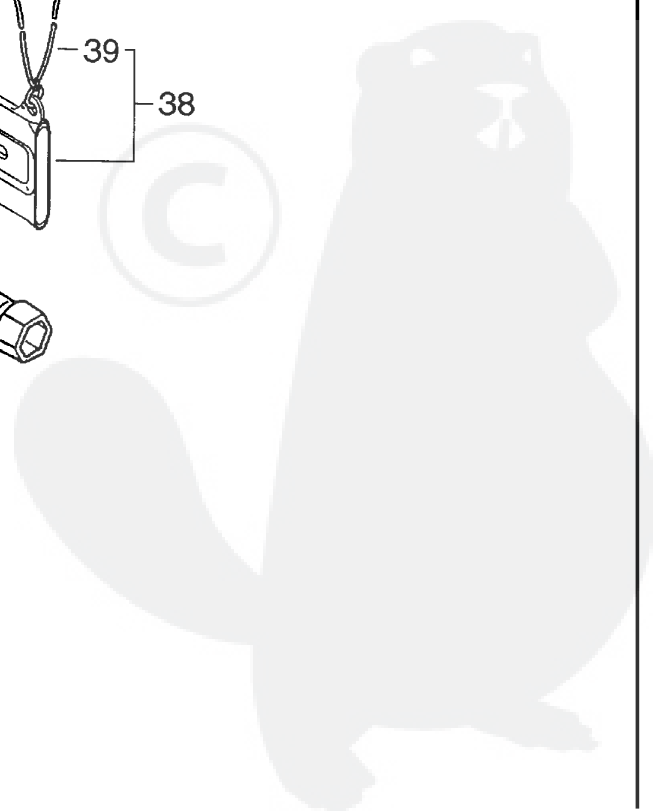
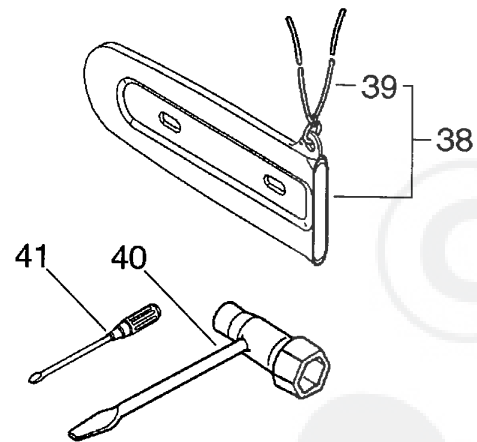
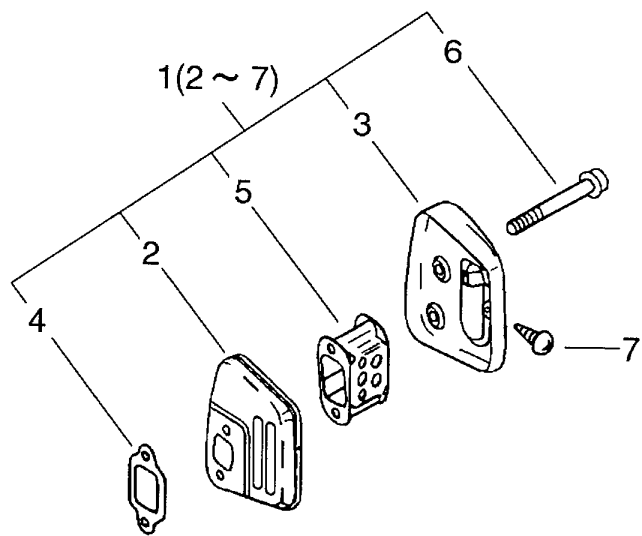


Parts List

Group:Chain Saws Model:CS-350WES(36) Section:Muffler ,Tools(Sr/Nr 36023860 and before)(2)

| Key | Lv | Part Number | Q'ty | Description | Remarks | Note |
|-----|----|--------------|------|---------------------|---------------------|------|
| 1 | | P021-004952 | 1 | MUFFLER ASY | Sus. by P021-009930 | |
| 2 | + | A300-000370 | 1 | MUFFLER,EXHAUST | | |
| 3 | + | P021-008650 | 1 | MUFFLER LID ASY | | |
| 4 | + | 145510-13931 | 1 | GASKET, MUFFLER | | |
| 5 | + | A301-000000 | 1 | PLATE,MUFFLER | | |
| 6 | + | 91107-05040 | 2 | BOLT HSH FLANGE | | |
| 7 | + | 900250-04008 | 1 | SCREW 4*8 | | |
| 38 | | P021-006951 | 1 | SCABBARD,CHAIN | OPTION | |
| 39 | + | 898568-14530 | 1 | ROPE | OPTION | |
| 40 | | 895410-03930 | 1 | WRENCH, W/S. DRIVER | | |
| 41 | | 895812-03930 | 1 | DRIVER, SCREW 50 | | |

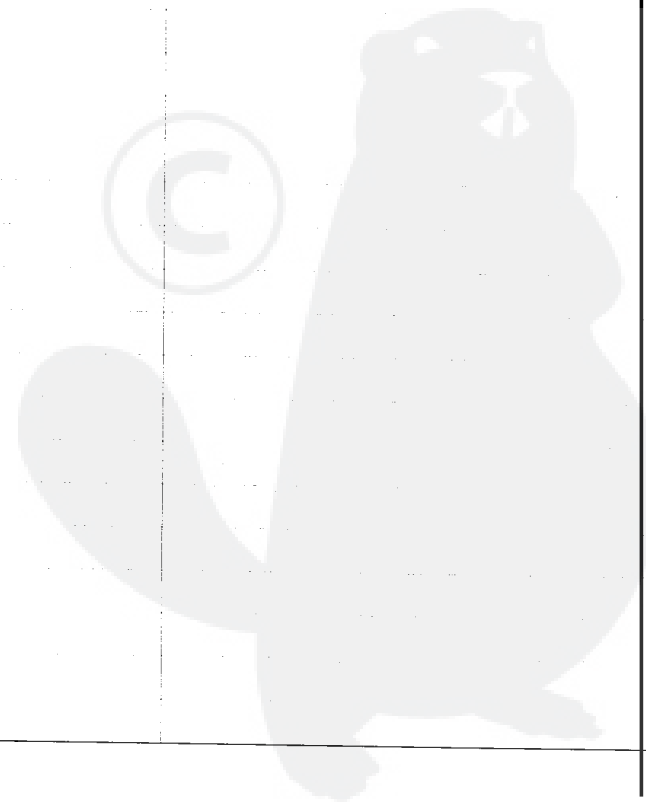


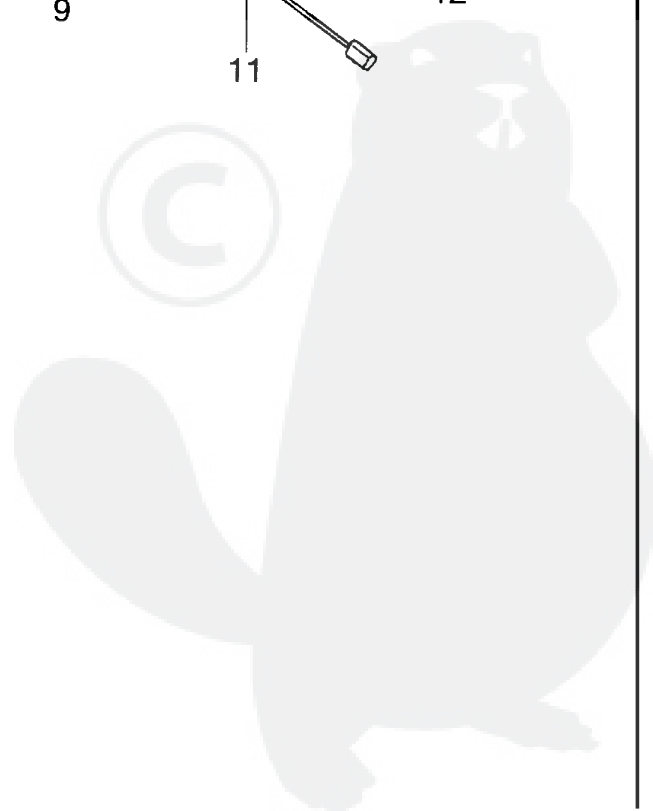
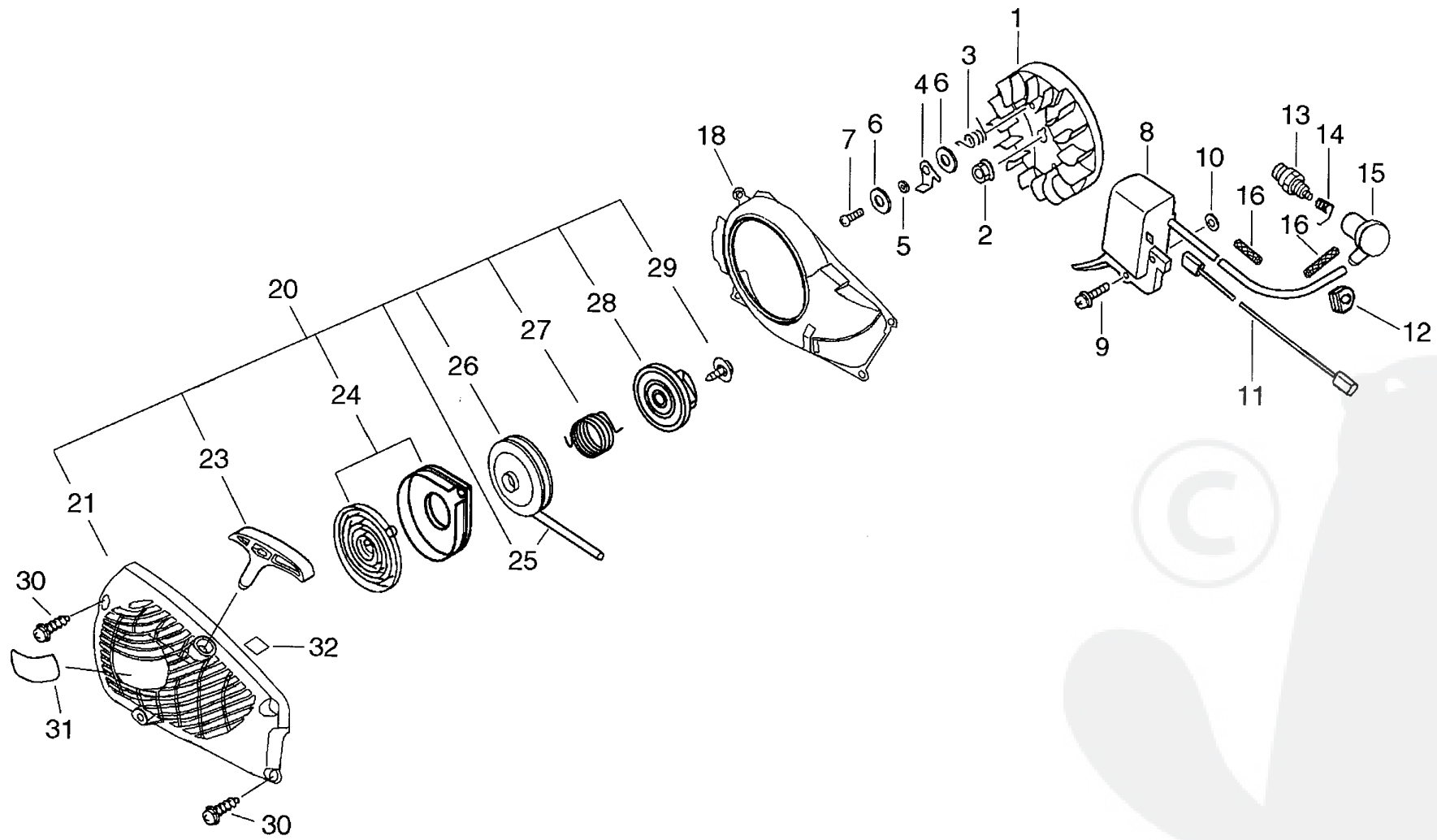


Parts List

Group:Chain Saws Model:CS-350WES(36) Section:Muffler ,Tools(Sr/Nr 36023861 and after)(3)

| Key | Lv | Part Number | Q'ty | Description | Remarks | Note |
|-----|----|--------------|------|---------------------|---------------------|------|
| 1 | | P021-004952 | 1 | MUFFLER ASY | Sus. by P021-009930 | |
| 1 | | P021-009930 | 1 | MUFFLER ASY | | |
| 2 | + | A300-000370 | 1 | MUFFLER,EXHAUST | | |
| 3 | + | P021-008650 | 1 | MUFFLER LID ASY | | |
| 4 | + | 145510-13931 | 1 | GASKET, MUFFLER | | |
| 5 | + | A301-000000 | 1 | PLATE,MUFFLER | | |
| 6 | + | 91107-05040 | 2 | BOLT HSH FLANGE | | |
| 7 | + | 900250-04008 | 1 | SCREW 4*8 | | |
| 38 | | P021-006951 | 1 | SCABBARD,CHAIN | | |
| 39 | + | 898568-14530 | 1 | ROPE | | |
| 40 | | 895410-03930 | 1 | WRENCH, W/S. DRIVER | | |
| 41 | | 895812-03930 | 1 | DRIVER, SCREW 50 | | |

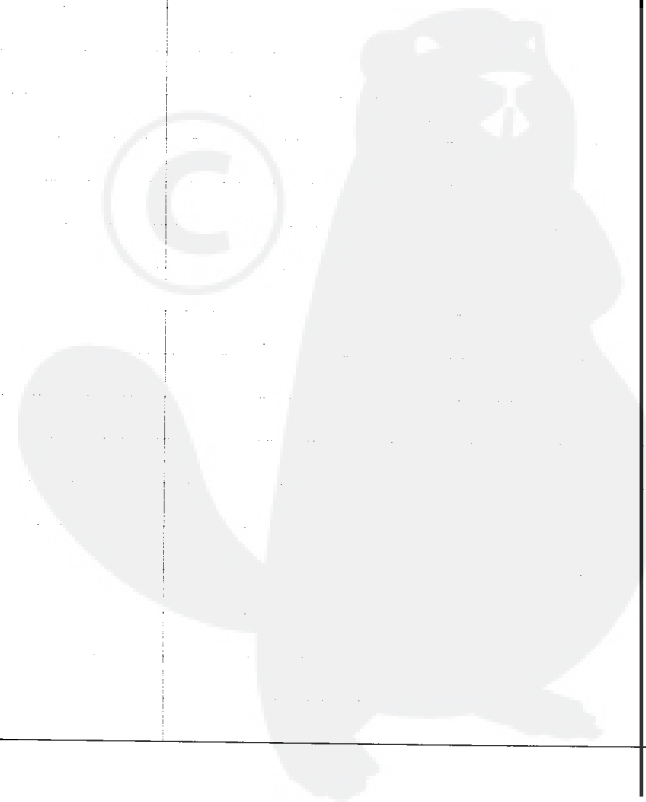




P a r t s L i s t

Group:Chain Saws Model:CS-350WES(36) Section:Starter, Magneto(Sr/Nr 36023860 and before)(4)

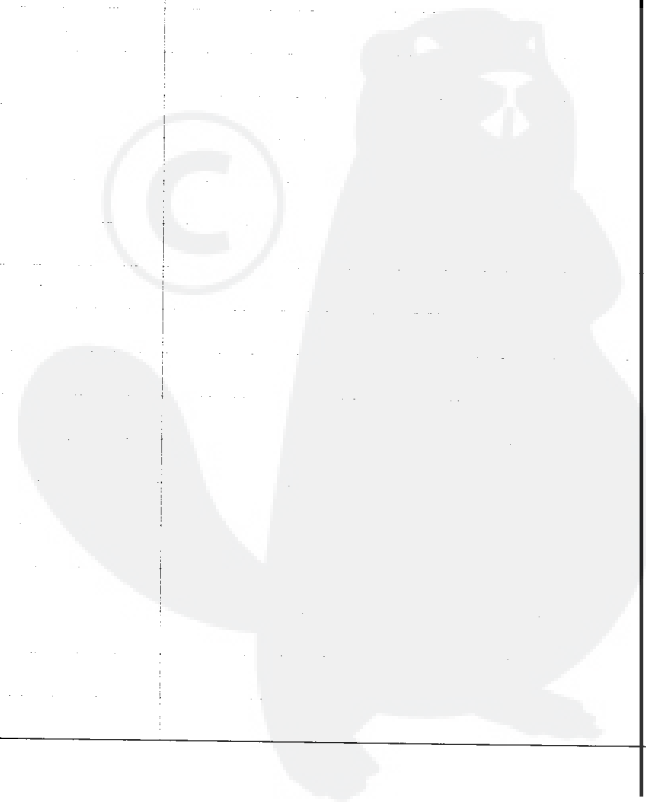
| Key | Lv | Part Number | Q'ty | Description | Remarks | Note |
|-----|----|--------------|------|----------------------|---------------------------|------|
| 1 | | A409-000170 | 1 | ROTOR, MAGNETO | | |
| 2 | | 900515-00008 | 1 | NUT, FLANGE 8 | | |
| 3 | | 177234-35430 | 2 | SPRING, RETURN | | |
| 4 | | A514-000020 | 2 | PAWL | | |
| 5 | | 177247-04630 | 2 | SPACER, RATCHET | | |
| 6 | | 900603-00005 | 4 | WASHER 5 | | |
| 7 | | V203-000080 | 2 | BOLT, 5 | | |
| 8 | | A411-000150 | 1 | COIL, IGNITION | | |
| 9 | | 900238-05022 | 2 | SCREW 5*22 | | |
| 10 | | 150117-16430 | 2 | SPACER | | |
| 11 | | V485-000550 | 1 | LEAD | | |
| 12 | | 156110-04920 | 1 | BUSHING | | |
| 13 | | 159010-10230 | 1 | PLUG, SPARK (BPMR-7A | | |
| 14 | | A426-000000 | 1 | TERMINAL, SPARKPLUG | | |
| 15 | | A427-000000 | 1 | CAP, SPARK PLUG | | |
| 16 | | V475-002390 | 1 | TUBE | Sr/Nr 36003700 and before | |
| 16 | | V475-002390 | 2 | TUBE | Sr/Nr 36003701 and after | |
| 18 | | A172-000500 | 1 | COVER, FAN | Sus. by A172-000501 | |
| 18 | | A172-000501 | 1 | COVER, FAN | | |
| 20 | | A051-000800 | 1 | STARTER, RECOIL | Sus. by A051-000802 | |
| 20 | | A051-000801 | 1 | STARTER, RECOIL | Sus. by A051-000802 | |
| 20 | | A051-000802 | 1 | STARTER, RECOIL | | |
| 21 | + | P022-009770 | 1 | STARTER, RECOIL | Sus. by P022-009771 | |
| 21 | + | P022-009771 | 1 | STARTER, RECOIL | | |
| 23 | + | P022-005890 | 1 | GRIP, STARTER | | |
| 24 | + | P022-001330 | 1 | SPRING KIT, REWIND | | |
| 25 | + | P022-008440 | 1 | ROPE, STARTER | | |
| 26 | + | A506-000030 | 1 | REEL, ROPE | | |

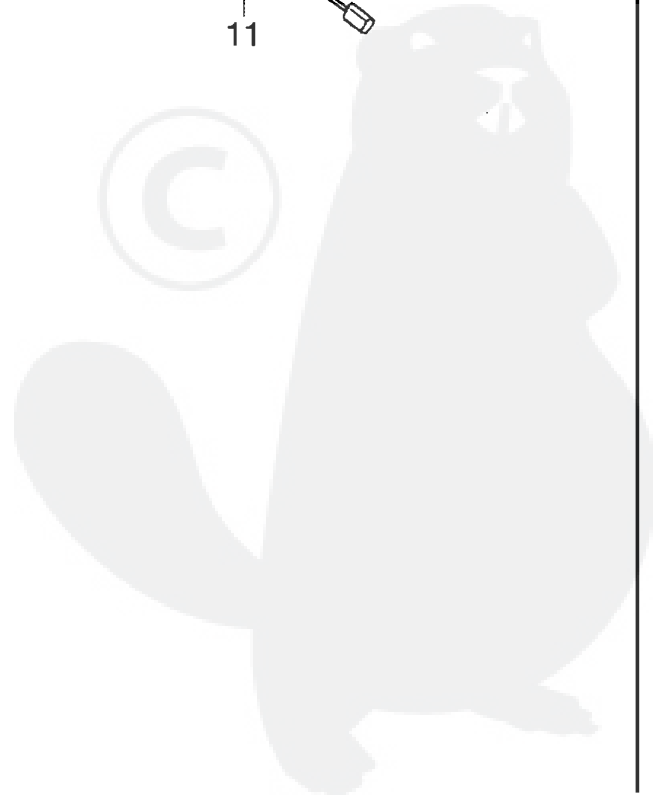
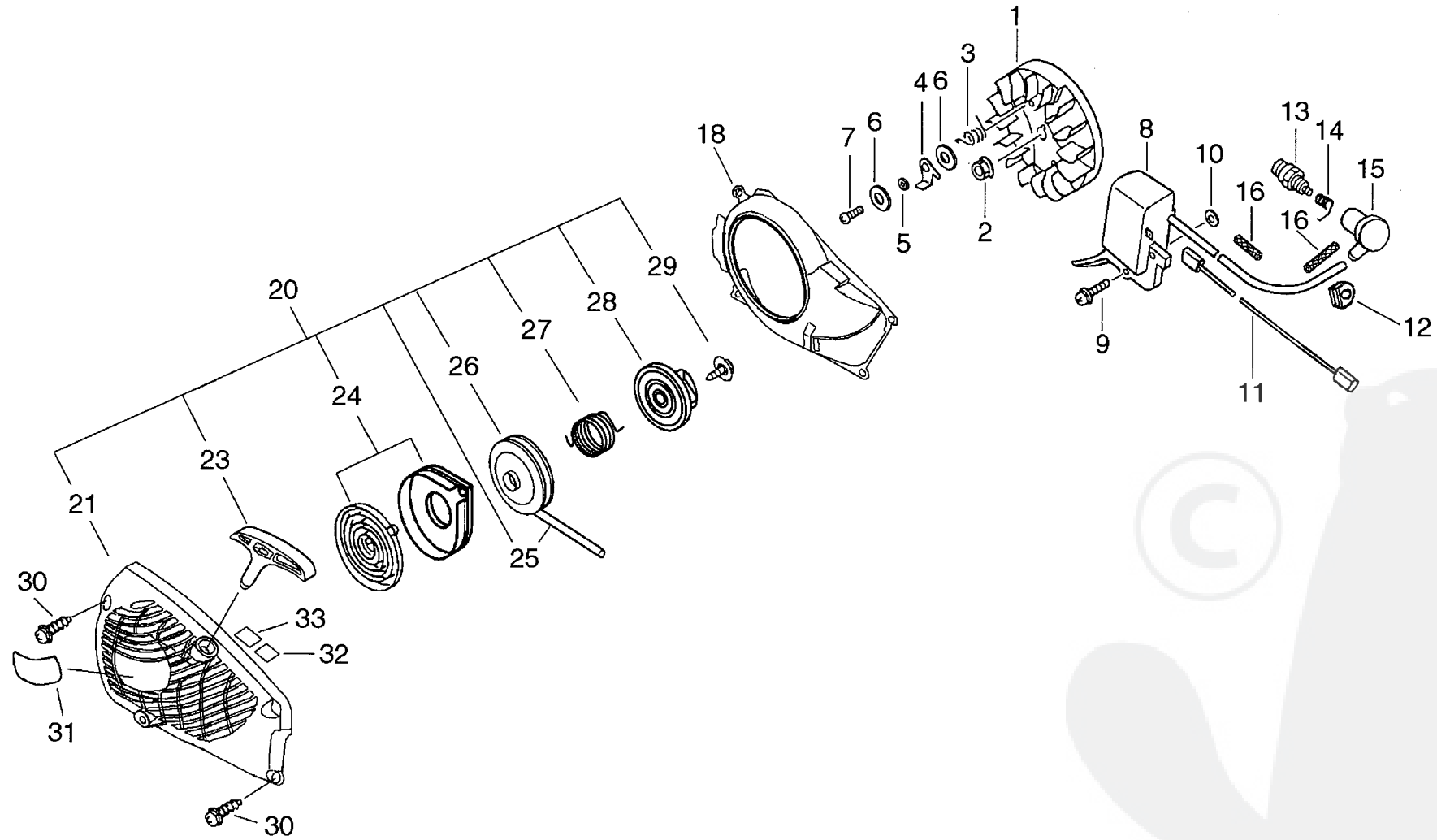


Parts List

Group:Chain Saws Model:CS-350WES(36) Section:Starter, Magneto(Sr/Nr 36023860 and before) (4)

| Key | Lv | Part Number | Q'ty | Description | Remarks | Note |
|-----|----|--------------|------|-----------------|---------------------|------|
| 27 | + | V452-000220 | 1 | SPRING, TORSION | | |
| 28 | + | A507-000020 | 1 | CATCHER, PAWL | Sus. by A507-000021 | |
| 28 | + | A507-000021 | 1 | CATCHER, PAWL | | |
| 29 | + | 177236-61830 | 1 | SCREW | | |
| 30 | | 900256-04016 | 4 | SCREW 4*16 | | |
| 31 | | X502-000100 | 1 | LABEL, ECHO | Sus. by X502-000101 | |
| 31 | | X502-000101 | 1 | LABEL, ECHO | | |
| 32 | | X505-000180 | 1 | LABEL, CAUTION | | |

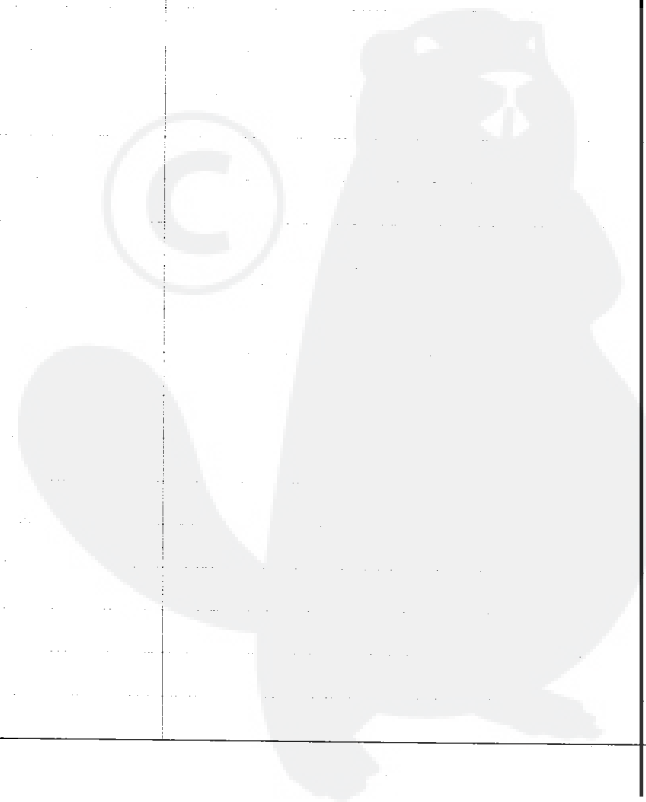




Parts List

Group:Chain Saws Model:CS-350WES(36) Section:Starter, Magneto(Sr/Nr 36023861 and after)(5)

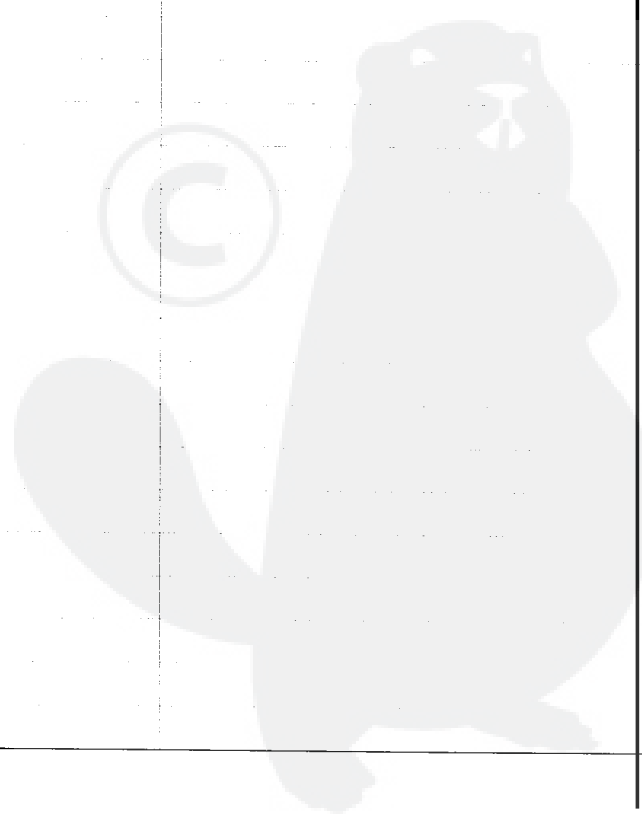
| Key | Lv | Part Number | Q'ty | Description | Remarks | Note |
|-----|----|--------------|------|----------------------|----------|------|
| 1 | | A409-000170 | 1 | ROTOR, MAGNETO | | |
| 2 | | 900515-00008 | 1 | NUT, FLANGE 8 | | |
| 3 | | 177234-35430 | 2 | SPRING, RETURN | | |
| 4 | | A514-000020 | 2 | PAWL | | |
| 5 | | 177247-04630 | 2 | SPACER, RATCHET | | |
| 6 | | 900603-00005 | 4 | WASHER 5 | | |
| 7 | | V203-000080 | 2 | BOLT, 5 | | |
| 8 | | A411-000150 | 1 | COIL, IGNITION | | |
| 9 | | 900238-05022 | 2 | SCREW 5*22 | | |
| 10 | | 150117-16430 | 2 | SPACER | | |
| 11 | | V485-000550 | 1 | LEAD | | |
| 12 | | 156110-04920 | 1 | BUSHING | | |
| 13 | | 159010-10230 | 1 | PLUG, SPARK (BPMR-7A | | |
| 14 | | A426-000000 | 1 | TERMINAL, SPARKPLUG | | |
| 15 | | A427-000000 | 1 | CAP, SPARK PLUG | | |
| 16 | | V475-002390 | 1 | TUBE | Qty 1->2 | |
| 16 | | V475-002390 | 2 | TUBE | | |
| 18 | | A172-000501 | 1 | COVER, FAN | | |
| 20 | | A051-000802 | 1 | STARTER, RECOIL | | |
| 21 | + | P022-009771 | 1 | STARTER, RECOIL | | |
| 23 | + | P022-005890 | 1 | GRIP, STARTER | | |
| 24 | + | P022-001330 | 1 | SPRING KIT, REWIND | | |
| 25 | + | P022-008440 | 1 | ROPE, STARTER | | |
| 26 | + | A506-000030 | 1 | REEL, ROPE | | |
| 27 | + | V452-000220 | 1 | SPRING, TORSION | | |
| 28 | + | A507-000021 | 1 | CATCHER, PAWL | | |
| 29 | + | 177236-61830 | 1 | SCREW | | |
| 30 | | 900256-04016 | 4 | SCREW 4*16 | | |

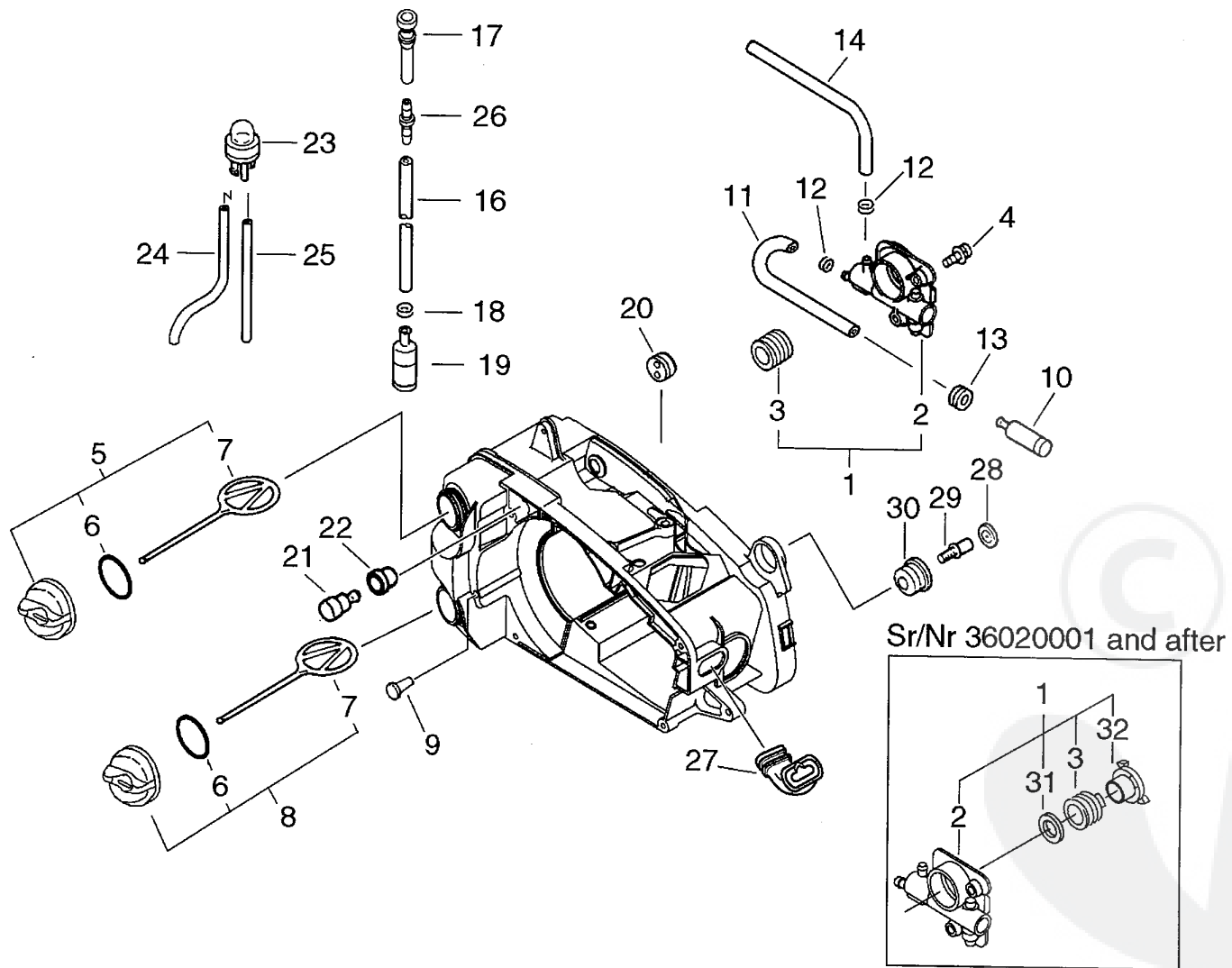


Parts List

Group:Chain Saws Model:CS-350WES(36) Section:Starter, Magneto(Sr/Nr 36023861 and after)(5)

| Key | Lv | Part Number | Q'ty | Description | Remarks | Note |
|-----|----|-------------|------|-------------------|---------------------|------|
| 31 | | X502-000100 | 1 | LABEL,ECHO | Sus. by X502-000101 | |
| 31 | | X502-000101 | 1 | LABEL,ECHO | | |
| 32 | | X505-000180 | 1 | LABEL,CAUTION | | |
| 33 | | X530-000210 | 1 | LABEL,EYE CATCHER | | |

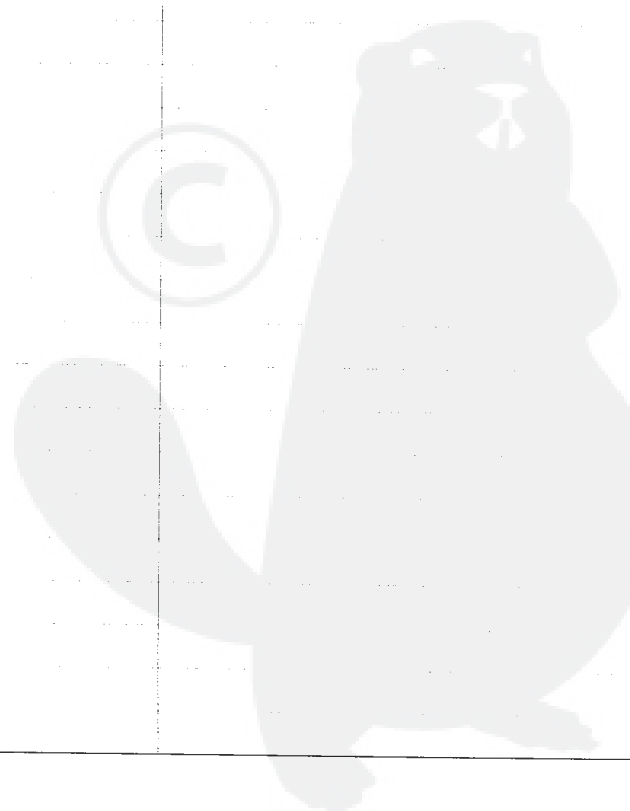




P a r t s L i s t

Group:Chain Saws Model:CS-350WES(36) Section:Auto-Oiler(6)

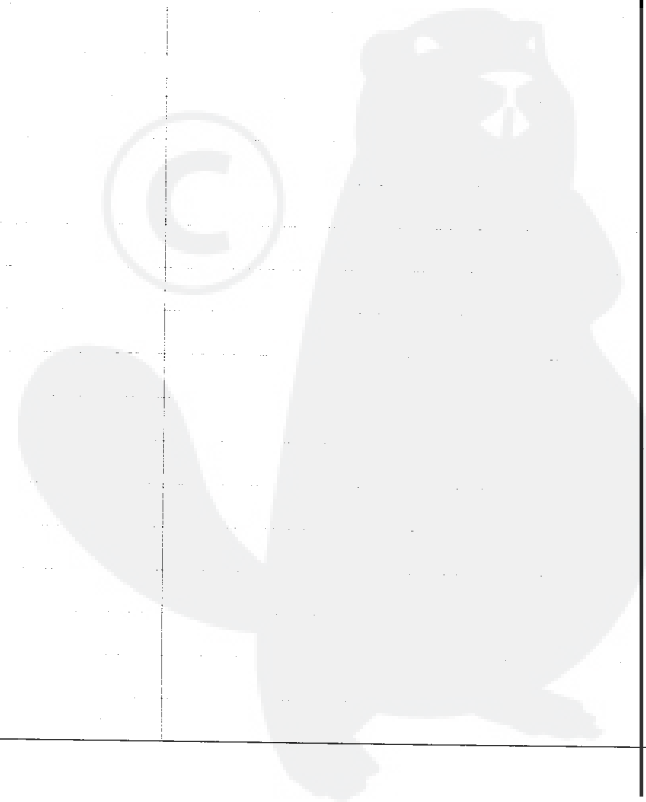
| Key | Lv | Part Number | Q'ty | Description | Remarks | Note |
|-----|----|--------------|------|---------------------|---------------------------|------|
| 1 | | P021-001980 | 1 | AUTO-OILER ASY | Sr/Nr 36015370 and before | |
| 1 | | P021-010890 | 1 | AUTO-OILER ASY | Sr/Nr 36020001 and after | |
| 2 | + | C022-000000 | 1 | OILER, ASM AUTO | Sr/Nr 36015370 and before | |
| 2 | + | C022-000020 | 1 | AUTO-OILER ASSEMBLY | Sr/Nr 36020001 and after | |
| 3 | + | V652-000010 | 1 | GEAR, WORM | Sr/Nr 36015370 and before | |
| 3 | + | V652-000030 | 1 | GEAR, WORM | Sr/Nr 36020001 and after | |
| 31 | + | V308-000030 | 1 | WASHER, CIRCULAR 11 | Sr/Nr 36020001 and after | |
| 32 | + | V356-000290 | 1 | COLLAR, 10 | Sr/Nr 36020001 and after | |
| 4 | | 900238-04012 | 2 | SCREW 4*12 | | |
| 5 | | P021-005591 | 1 | FUEL CAP ASY | | |
| 6 | + | 900720-00018 | 1 | O-RING 18 | | |
| 7 | + | A365-000050 | 1 | CONNECTOR, CAP | | |
| 8 | | P021-005581 | 1 | OIL CAP ASY | | |
| 6 | + | 900720-00018 | 1 | O-RING 18 | | |
| 7 | + | A365-000050 | 1 | CONNECTOR, CAP | | |
| 9 | | 436114-13930 | 1 | VALVE, CHECK | | |
| 10 | | 436205-02832 | 1 | STRAINER, OIL | | |
| 11 | | V471-000740 | 1 | PIPE | | |
| 12 | | 132013-26630 | 1 | CLIP | Sr/Nr 36003700 and before | |
| 12 | | 132013-26630 | 2 | CLIP | Sr/Nr 36003701 and after | |
| 13 | | 132115-01461 | 1 | GROMMET, FUEL | | |
| 14 | | V471-000760 | 1 | PIPE | | |
| 16 | | V471-000750 | 1 | PIPE | | |
| 17 | | V470-000320 | 1 | PIPE | | |
| 18 | | 132013-09820 | 1 | CLIP | | |
| 19 | | 131205-14930 | 1 | STRAINER, FUEL | | |
| 20 | | 132115-44330 | 1 | GROMMET | | |
| 21 | | 131300-56430 | 1 | VALVE, CHECK | | |

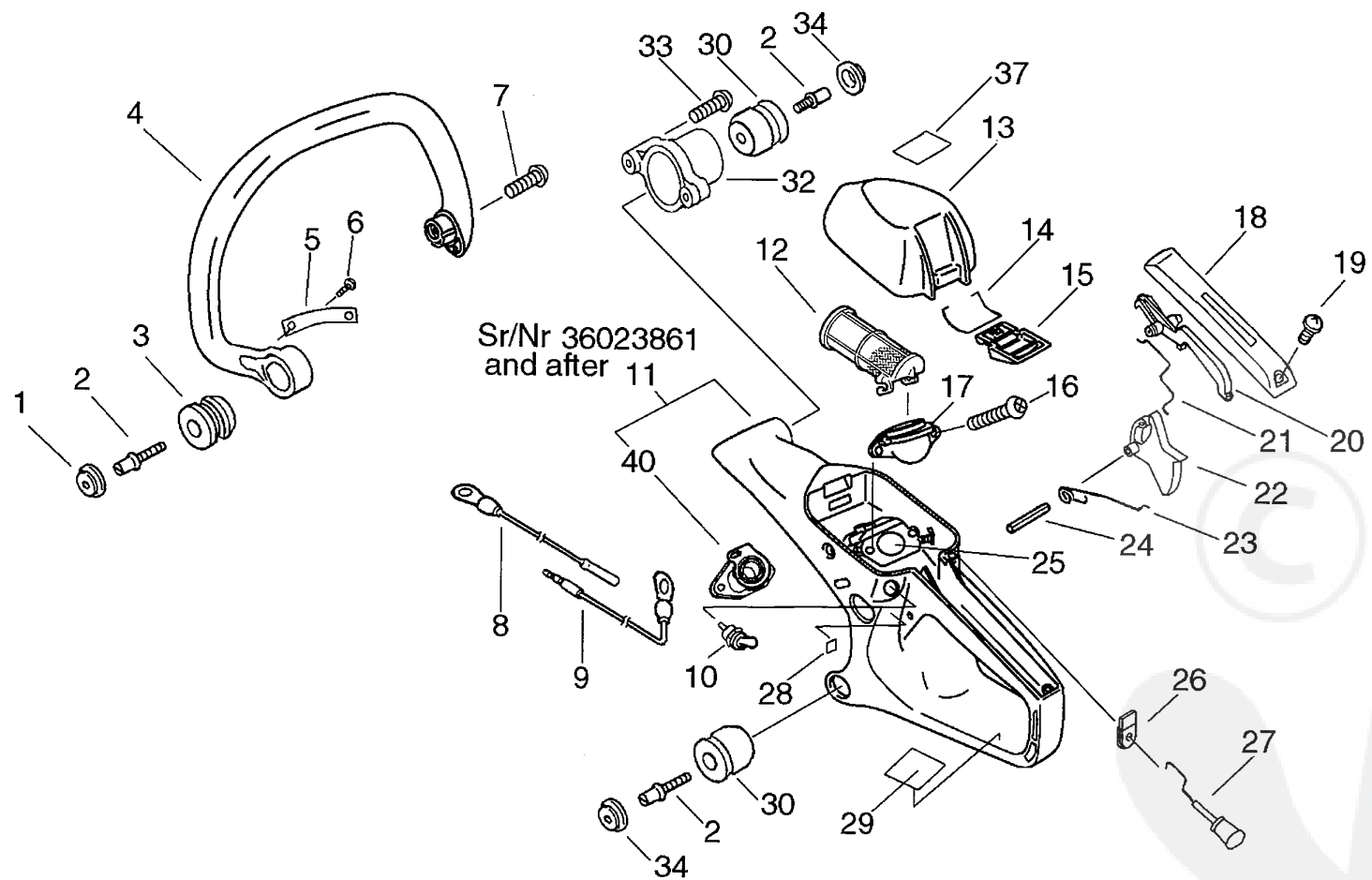


Parts List

Group:Chain Saws Model:CS-350WES(36) Section:Auto-Oiler(6)

| Key | Lv | Part Number | Q'ty | Description | Remarks | Note |
|-----|----|--------------|------|---------------|---------|------|
| 22 | | V137-000000 | 1 | GROMMET, FUEL | | |
| 23 | | 123181-39130 | 1 | PUMP, PRIMER | | |
| 24 | | V471-001440 | 1 | PIPE | | |
| 25 | | V471-001290 | 1 | PIPE | | |
| 26 | | V186-000020 | 1 | JOINT, PIPE | | |
| 27 | | A239-000030 | 1 | PIPE, INTAKE | | |
| 28 | | 100918-15130 | 1 | CAP | | |
| 29 | | V202-000020 | 1 | BOLT, 4 | | |
| 30 | | 100910-18830 | 1 | CUSHION | | |

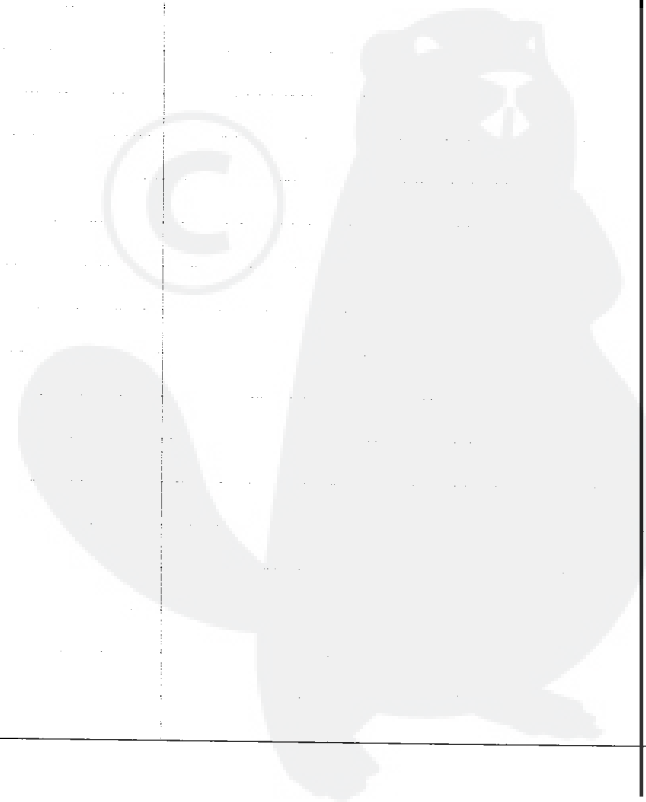




Parts List

Group:Chain Saws Model:CS-350WES(36) Section:Air Cleaner, Handle(Sr/Nr 36023860 and before)(7)

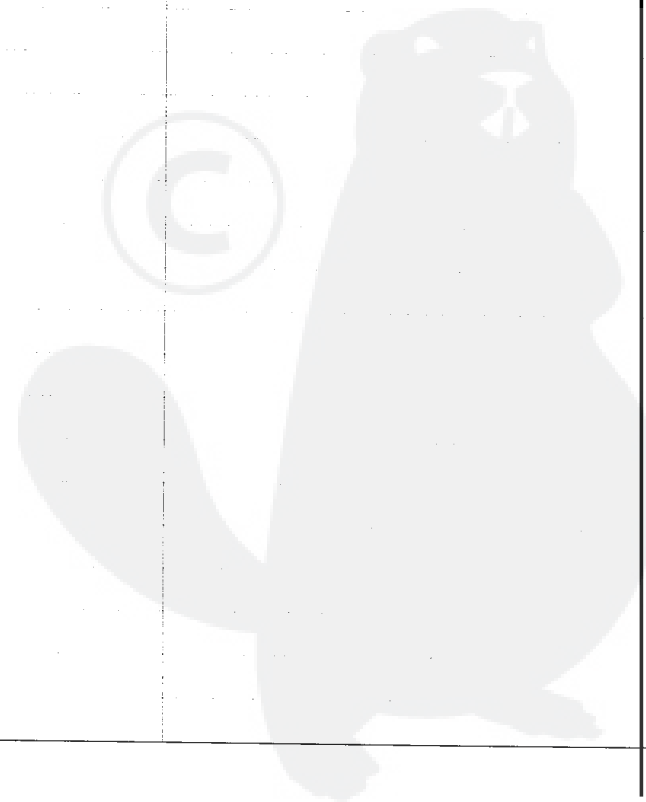
| Key | Lv | Part Number | Q'ty | Description | Remarks | Note |
|-----|----|--------------|------|---------------------|---------------------------|------|
| 1 | | 100918-14330 | 1 | CAP, CUSHION | | |
| 2 | | V202-000020 | 3 | BOLT, 4 | | |
| 3 | | V401-000120 | 1 | CUSHION, 5 | | |
| 4 | | C400-000320 | 1 | HANDLE, FRONT | | |
| 5 | | C617-000200 | 1 | STOPPER | | |
| 6 | | 900253-04008 | 1 | SCREW 4*8 | | |
| 7 | | 900253-05020 | 2 | SCREW 5*20 | | |
| 8 | | V485-000560 | 1 | LEAD | | |
| 9 | | V485-000570 | 1 | LEAD | Sus. by V485-000571 | |
| 9 | | V485-000571 | 1 | LEAD | | |
| 10 | | 163400-38430 | 1 | SWITCH, IGNITION | | |
| 11 | | C410-000250 | 1 | HANDLE, REAR | Sr/Nr 36023860 and before | |
| 11 | | C410-000251 | 1 | HANDLE, REAR | Sr/Nr 36023860 and before | |
| 11 | | P021-011540 | 1 | HANDLE, REAR | Sr/Nr 36023861 and after | |
| 40 | | A202000033 | 1 | BELLOWS, INTAKE | Sr/Nr 36023861 and after | |
| 12 | | A226-000260 | 1 | ELEMENT, AIR FILTER | | |
| 13 | | A232-000191 | 1 | LID, CLEANER | | |
| 14 | | V582-000020 | 1 | RING, SNAP | | |
| 15 | | A235-000140 | 1 | KNOB, CLEANER LID | | |
| 16 | | 900238-05050 | 2 | SCREW 5*50 | | |
| 17 | | A204-000060 | 1 | ELBOW, CARBURETOR | | |
| 18 | | C411-000000 | 1 | LID, HANDLE | Sus. by C411-000001 | |
| 18 | | C411-000001 | 1 | LID, HANDLE | | |
| 19 | | 900253-04012 | 1 | SCREW | | |
| 20 | | 178090-37930 | 1 | LOCKOUT, T. CONTROL | | |
| 21 | | C454-000090 | 1 | ROD, THROTTLE | Sus. by C454-000110 | |
| 21 | | C454-000110 | 1 | ROD, THROTTLE | | |
| 22 | | C450-000140 | 1 | TRIGGER, THROTTLE | | |

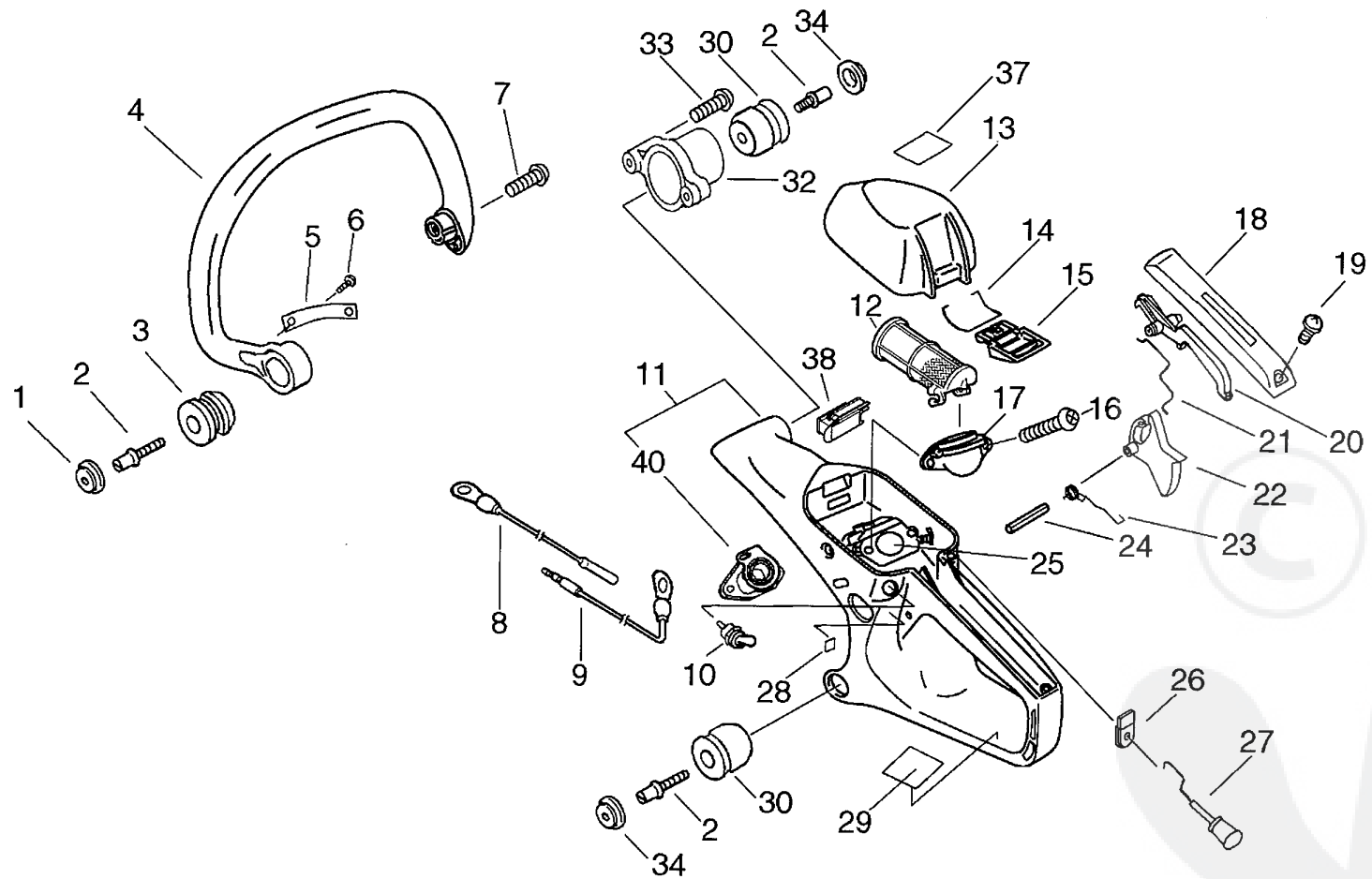


P a r t s L i s t

Group:Chain Saws Model:CS-350WES(36) Section:Air Cleaner, Handle(Sr/Nr 36023860 and before)(7)

| Key | Lv | Part Number | Q'ty | Description | Remarks | Note |
|-----|----|--------------|------|-----------------------|----------------------|------|
| 23 | | V452-000140 | 1 | SPRING,TORSION | Sus. by 178043-35430 | |
| 23 | | 178043-35430 | 1 | SPRING, THR.RETURN | | |
| 24 | | 900345-40025 | 1 | PIN, SPRING 4*25SUS | | |
| 25 | | A021-001020 | 1 | CARBURETOR, DIAPHRAGM | Sus. by A021-001191 | |
| 25 | | A021-001021 | 1 | CARBURETOR, DIAPHRAGM | Sus. by A021-001191 | |
| 25 | | A021-001190 | 1 | CARBURETOR, DIAPHRAGM | Sus. by A021-001191 | |
| 25 | | A021-001191 | 1 | CARBURETOR, DIAPHRAGM | | |
| 26 | | V130-000010 | 1 | GROMMET, CHOKE | | |
| 27 | | A241-000060 | 1 | KNOB, CHOKE | | |
| 28 | | 890157-39130 | 1 | LABEL, SWITCH | | |
| 29 | | 890345-39230 | 1 | LABEL, CAUTION | | |
| 30 | | V400-000040 | 2 | CUSHION, 4 | Sus. by V400-000041 | |
| 30 | | V400-000041 | 2 | CUSHION, 4 | | |
| 32 | | V424-000000 | 1 | SLEEVE, CUSHION | | |
| 33 | | 900253-04016 | 2 | SCREW 4*16 | | |
| 34 | | 100918-15130 | 2 | CAP | | |
| 37 | | X503-006200 | 1 | LABEL, MODEL | Sus. by X503-008180 | |

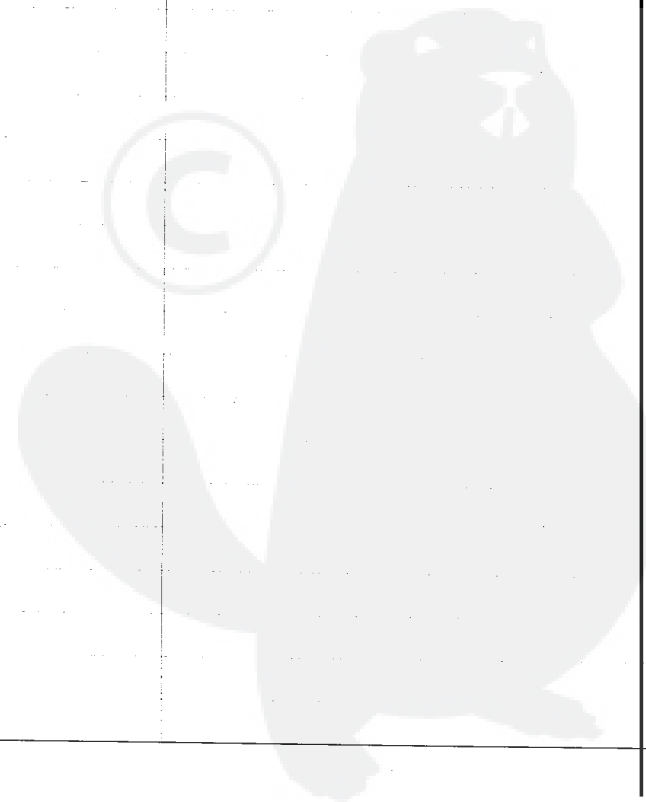




P a r t s L i s t

Group:Chain Saws Model:CS-350WES(36) Section:Air Cleaner, Handle(Sr/Nr 36023861 and after) (8)

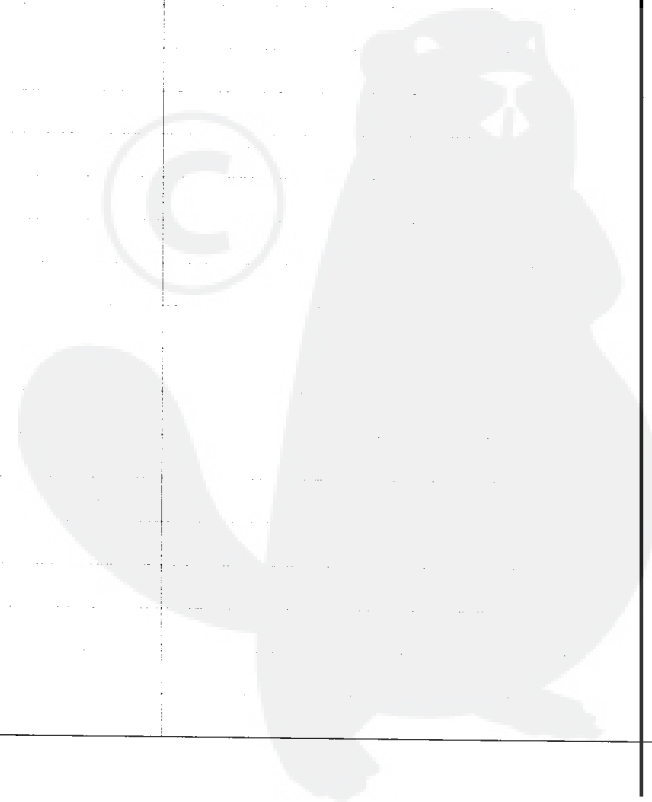
| Key | Lv | Part Number | Q'ty | Description | Remarks | Note |
|------|----|--------------|------|-----------------------|---|------|
| 1 | | 100918-14330 | 1 | CAP, CUSHION | | |
| 2 | | V202-000020 | 3 | BOLT, 4 | | |
| 3 | | V401-000120 | 1 | CUSHION, 5 | | |
| 4 | | C400-000320 | 1 | HANDLE, FRONT | Sus. by C400-000321 | |
| 5 | | C617-000200 | 1 | STOPPER | | |
| 6 | | 900253-04008 | 1 | SCREW 4*8 | | |
| 7 | | 900253-05020 | 2 | SCREW 5*20 | | |
| 8 | | V485-000560 | 1 | LEAD | | |
| 9 | | V485-000571 | 1 | LEAD | | |
| 10 | | 163400-38430 | 1 | SWITCH, IGNITION | | |
| 11 | | P021-011540 | 1 | HANDLE, REAR | Sr/Nr 36023861 and after, Sus. by P021-011541 | |
| 40 + | | A202-000033 | 1 | BELLOWS, INTAKE | Sr/Nr 36023861 and after | |
| 12 | | A226-000260 | 1 | ELEMENT, AIR FILTER | | |
| 13 | | A232-000191 | 1 | LID, CLEANER | | |
| 14 | | V582-000020 | 1 | RING, SNAP | | |
| 15 | | A235-000140 | 1 | KNOB, CLEANER LID | | |
| 16 | | 900238-05050 | 2 | SCREW 5*50 | | |
| 17 | | A204-000060 | 1 | ELBOW, CARBURETOR | | |
| 18 | | C411-000001 | 1 | LID, HANDLE | | |
| 19 | | 900253-04012 | 1 | SCREW | | |
| 20 | | 178090-37930 | 1 | LOCKOUT, T. CONTROL | | |
| 21 | | C454-000110 | 1 | ROD, THROTTLE | | |
| 22 | | C450-000140 | 1 | TRIGGER, THROTTLE | Sus. by C450-000141 | |
| 23 | | 178043-35430 | 1 | SPRING, THR.RETURN | Sus. by V452-000260 | |
| 24 | | 900345-40025 | 1 | PIN, SPRING 4*25SUS | | |
| 25 | | A021-001191 | 1 | CARBURETOR, DIAPHRAGM | | |
| 26 | | V130-000010 | 1 | GROMMET, CHOKE | | |
| 27 | | A241-000060 | 1 | KNOB, CHOKE | | |

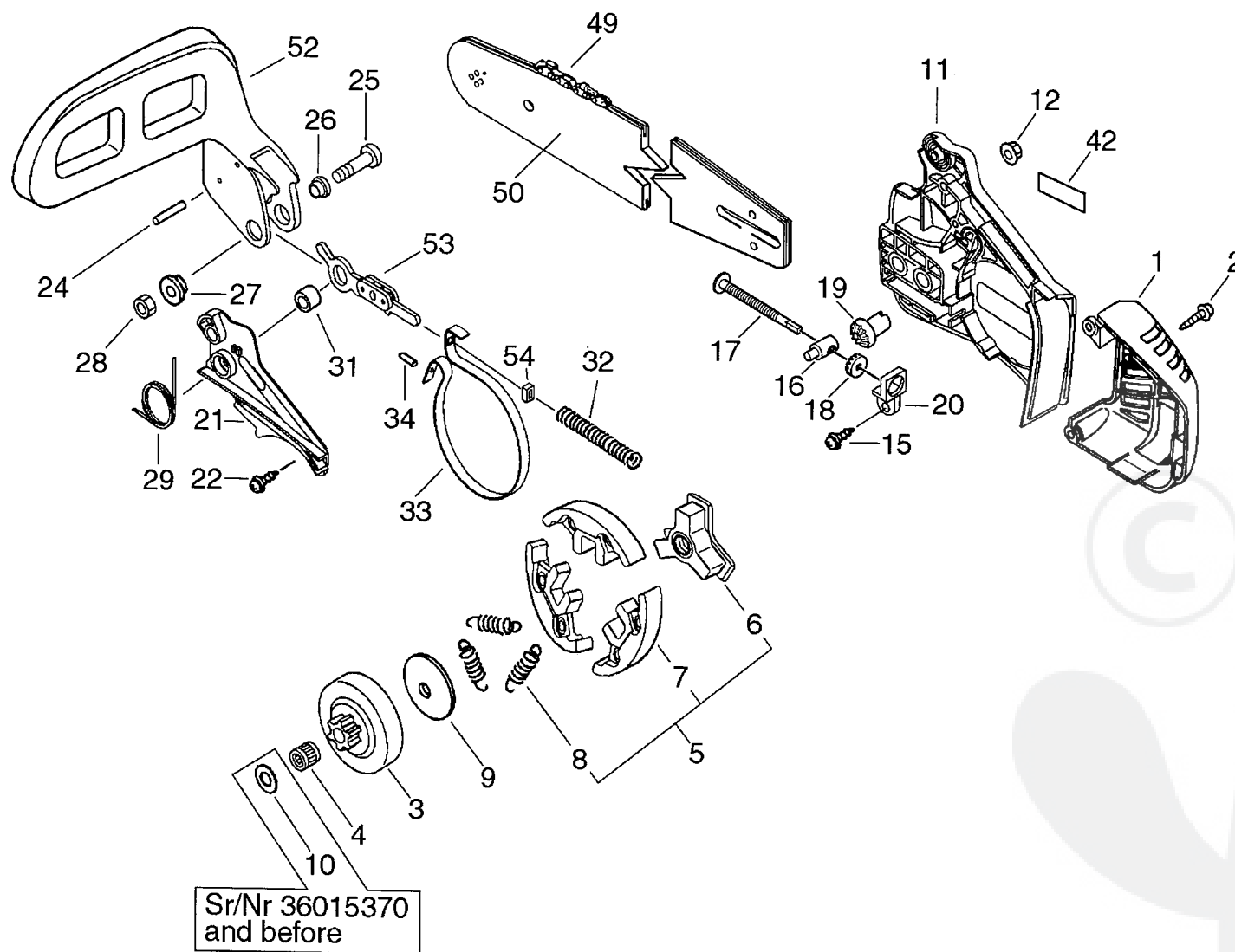


Parts List

Group:Chain Saws Model:CS-350WES(36) Section:Air Cleaner, Handle(Sr/Nr 36023861 and after)(8)

| Key | Lv | Part Number | Q'ty | Description | Remarks | Note |
|-----|----|--------------|------|-----------------|---------------------|------|
| 28 | | 890157-39130 | 1 | LABEL, SWITCH | | |
| 29 | | 890345-39230 | 1 | LABEL, CAUTION | | |
| 30 | | V400-000041 | 2 | CUSHION, 4 | | |
| 32 | | V424-000000 | 1 | SLEEVE, CUSHION | | |
| 33 | | 900253-04016 | 2 | SCREW 4*16 | | |
| 34 | | 100918-15130 | 2 | CAP | | |
| 37 | | X503-006200 | 1 | LABEL, MODEL | Sus. by X503-008180 | |
| 37 | | X503-008180 | 1 | LABEL, MODEL | | |
| 38 | | V142-000020 | 1 | GROMMET, DUST | | |

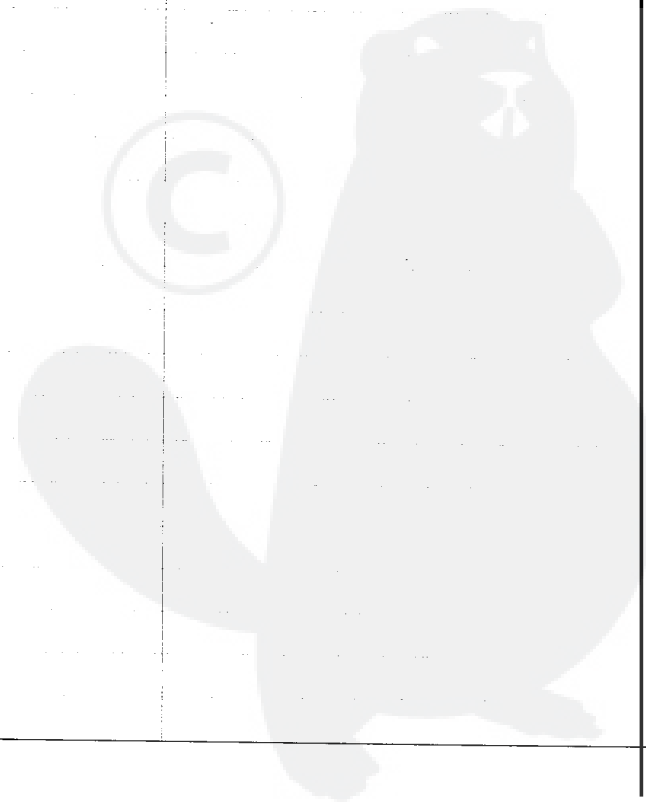




Parts List

Group:Chain Saws Model:CS-350WES(36) Section:Clutch, Sprocket(Sr/Nr 36023860 and before) (9)

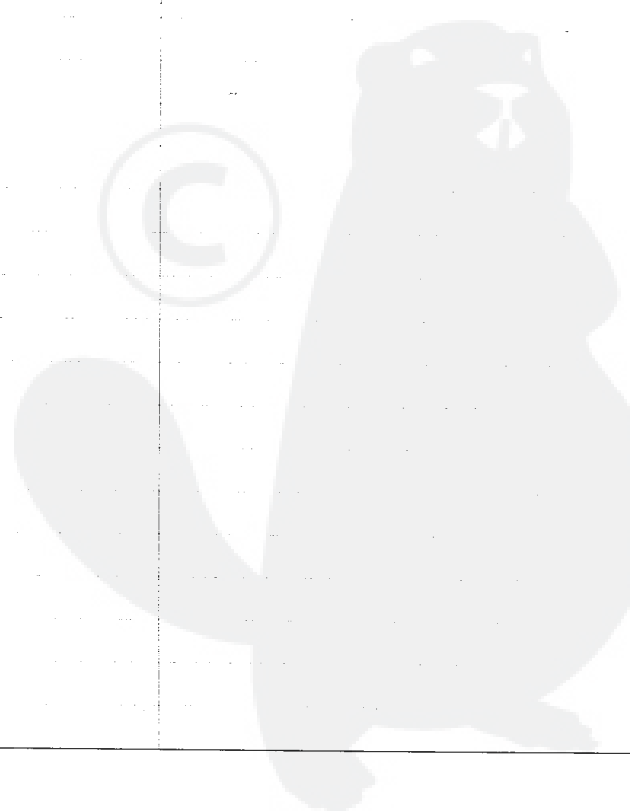
| Key | Lv | Part Number | Q'ty | Description | Remarks | Note |
|-----|----|--------------|------|------------------|---------------------------|------|
| 1 | | A320-000181 | 1 | COVER, MUFFLER | Sus. by A320-000183 | |
| 1 | | A320-000182 | 1 | COVER, MUFFLER | Sus. by A320-000183 | |
| 1 | | A320-000183 | 1 | COVER, MUFFLER | | |
| 2 | | 900253-04016 | 2 | SCREW 4*16 | | |
| 3 | | 175005-39132 | 1 | DRUM, CLUTCH | | |
| 4 | | 175012-35630 | 1 | BEARING, NEEDLE | Sus. by 175012-00831 | |
| 4 | | 175012-00831 | 1 | BEARING, NEEDLE | | |
| 5 | | A056-000070 | 1 | CLUTCH | | |
| 6 + | | A552-000020 | 1 | HUB, CLUTCH | | |
| 7 + | | P021-005810 | 1 | CLUTCH SHOE SET | | |
| 8 + | | V451-000470 | 3 | SPRING, TENSION | | |
| 9 | | A551-000010 | 1 | PLATE, CLUTCH | | |
| 10 | | 175014-39130 | 1 | WASHER, CLUTCH | Sus. by 175014-39131 | |
| 10 | | 175014-39131 | 1 | WASHER, CLUTCH | Sr/Nr 36015370 and before | |
| 11 | | C300-000241 | 1 | GUARD, SPROCKET | Sus. by C032-000242 | |
| 12 | | 433019-03933 | 2 | NUT, FLANGE 6 | | |
| 15 | | 900253-04012 | 1 | SCREW | | |
| 16 | | C309-000030 | 1 | TENSIONER, CHAIN | | |
| 17 | | V203-000041 | 1 | BOLT, 5 | | |
| 18 | | V651-000011 | 1 | GEAR, BEVEL | | |
| 19 | | V651-000001 | 1 | GEAR, BEVEL | | |
| 20 | | V355-000140 | 1 | COLLAR, 8 | | |
| 21 | | C345-000084 | 1 | COVER, BRAKE | | |
| 22 | | 900253-04012 | 3 | SCREW | | |
| 24 | | 900330-30260 | 2 | ROLLER 3*26 | | |
| 25 | | 91318-05032 | 1 | SCREW | | |
| 26 | | 433167-39130 | 1 | SPACER | | |
| 27 | | V353-000060 | 1 | COLLAR, 5 | | |

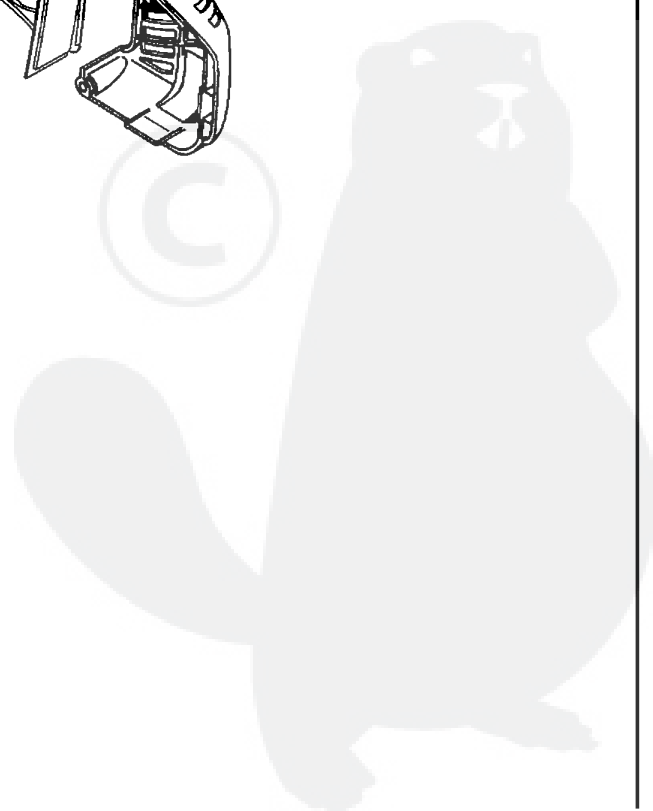
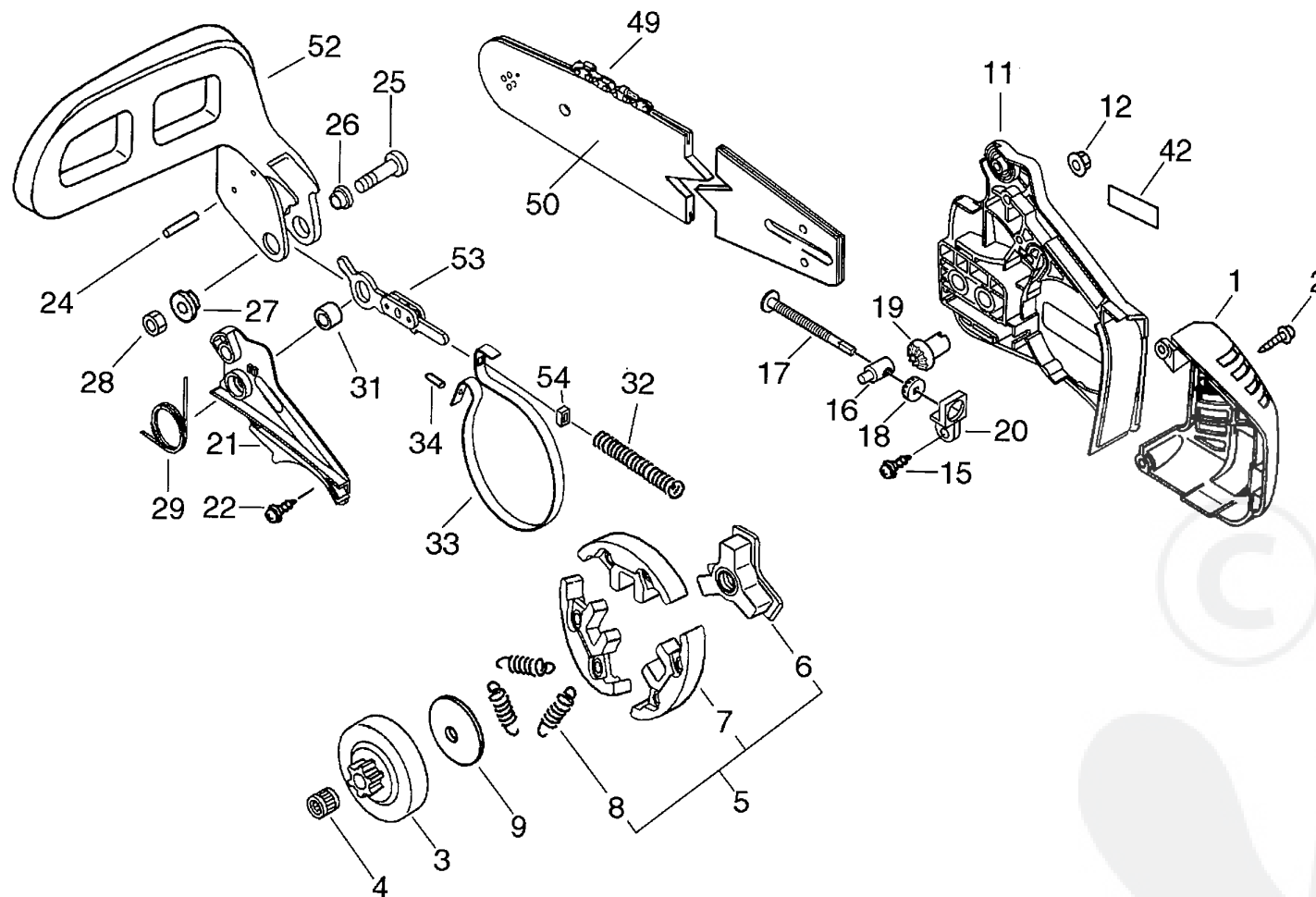


Parts List

Group:Chain Saws Model:CS-350WES(36) Section:Clutch, Sprocket(Sr/Nr 36023860 and before) (9)

| Key | Lv | Part Number | Q'ty | Description | Remarks | Note |
|-----|----|--------------|------|----------------------|----------------------|------|
| 28 | | 900562-50005 | 1 | LOCKNUT 5 | | |
| 29 | | V452-000110 | 1 | SPRING,TORSION | | |
| 31 | | 433116-35430 | 1 | SPACER 8 | | |
| 32 | | V450-000070 | 1 | SPRING,COMPRESSION | | |
| 33 | | C328-000030 | 1 | BAND,BRAKE | | |
| 34 | | 93050-30098 | 1 | ROLLER | | |
| 42 | | X502-000020 | 1 | LABEL,ECHO | Sus. by X502-000340 | |
| 49 | | 431010-39930 | 1 | CHAIN, SAW 91VS-47E | 91VS-47E | |
| 49 | | 431019-39930 | 1 | CHAIN, SAW 91VS-53E | 91VS-53E | |
| 49 | | 431011-39430 | 1 | CHAIN, SAW 91VS-58E | 91VS-58E | |
| 50 | | X122-000070 | 1 | BAR,GUIDE 30 | Sus. by X122-000071 | |
| 50 | | X122-000071 | 1 | BAR,GUIDE 30 | 30RC50M-3/8 | |
| 50 | | X123-000070 | 1 | BAR,GUIDE 35 | Sus. by X122-000131 | |
| 50 | | X123-000131 | 1 | BAR,GUIDE 35 | 35RC50M-3/8 | |
| 50 | | 430211-13431 | 1 | BAR,GUIDE 40RC50-3/8 | Sus. by 430211-13432 | |
| 50 | | 430211-13432 | 1 | BAR,GUIDE 40RC50-3/8 | 40RC-50-3/8 | |
| 52 | | C320-000045 | 1 | LEVER, BRAKE | Sus. by C320-000046 | |
| 53 | | C334-000070 | 1 | CONNECTOR, BRAKE | | |
| 54 | | V376-000450 | 1 | SPACER | | |

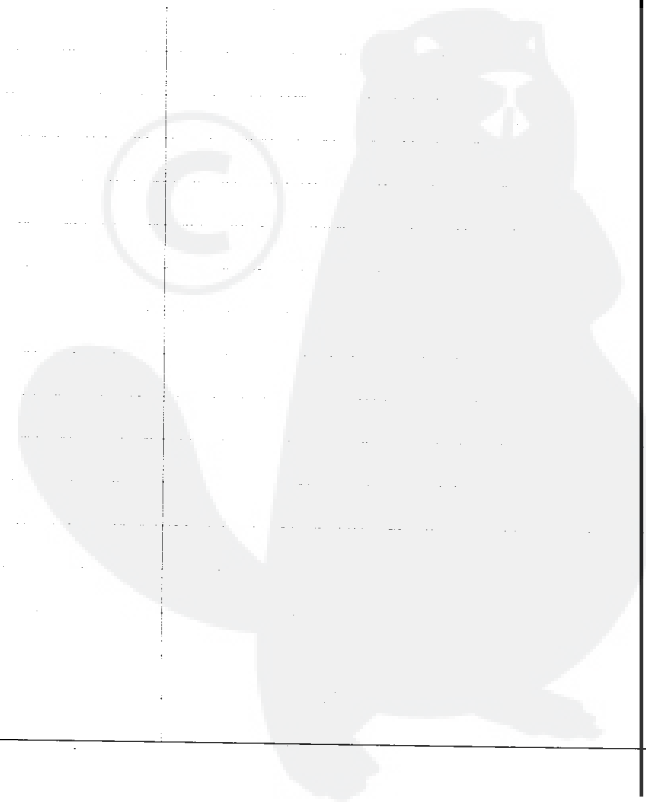




Parts List

Group:Chain Saws Model:CS-350WES(36) Section:Clutch, Sprocket(Sr/Nr 36023861 and after)(10)

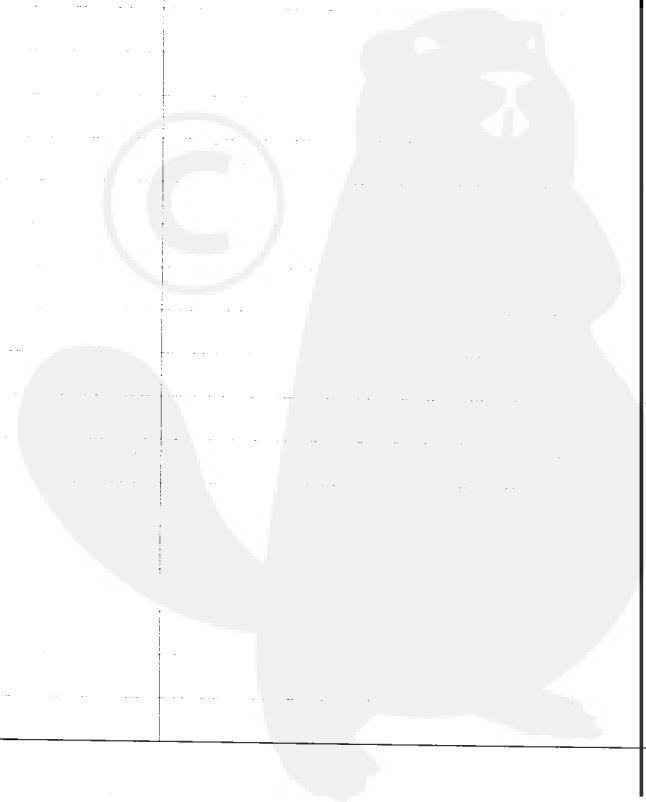
| Key | Lv | Part Number | Q'ty | Description | Remarks | Note |
|-----|----|--------------|------|------------------|---------------------|------|
| 1 | | A320-000183 | 1 | COVER, MUFFLER | | |
| 2 | | 900253-04016 | 2 | SCREW 4*16 | | |
| 3 | | 175005-39132 | 1 | DRUM, CLUTCH | | |
| 4 | | 175012-00831 | 1 | BEARING, NEEDLE | | |
| 5 | | A056-000070 | 1 | CLUTCH | | |
| 6 | + | A552-000020 | 1 | HUB, CLUTCH | | |
| 7 | + | P021-005810 | 1 | CLUTCH SHOE SET | | |
| 8 | + | V451-000470 | 3 | SPRING, TENSION | | |
| 9 | | A551-000010 | 1 | PLATE, CLUTCH | | |
| 10 | | 175014-39131 | 1 | WASHER, CLUTCH | | |
| 11 | | C300-000241 | 1 | GUARD, SPROCKET | Sus. by C300-000242 | |
| 11 | | C300-000242 | 1 | GUARD, SPROCKET | | |
| 12 | | 433019-03933 | 2 | NUT, FLANGE 6 | | |
| 15 | | 900253-04012 | 1 | SCREW | | |
| 16 | | C309-000030 | 1 | TENSIONER, CHAIN | | |
| 17 | | V203-000041 | 1 | BOLT, 5 | | |
| 18 | | V651-000011 | 1 | GEAR, BEVEL | | |
| 19 | | V651-000001 | 1 | GEAR, BEVEL | | |
| 20 | | V355-000140 | 1 | COLLAR, 8 | | |
| 21 | | C345-000084 | 1 | COVER, BRAKE | | |
| 22 | | 900253-04012 | 3 | SCREW | | |
| 24 | | 900330-30260 | 2 | ROLLER 3*26 | | |
| 25 | | 91318-05032 | 1 | SCREW | | |
| 26 | | 433167-39130 | 1 | SPACER | | |
| 27 | | V353-000060 | 1 | COLLAR, 5 | | |
| 28 | | 900562-50005 | 1 | LOCKNUT 5 | | |
| 29 | | V452-000110 | 1 | SPRING, TORSION | | |
| 31 | | 433116-35430 | 1 | SPACER 8 | | |

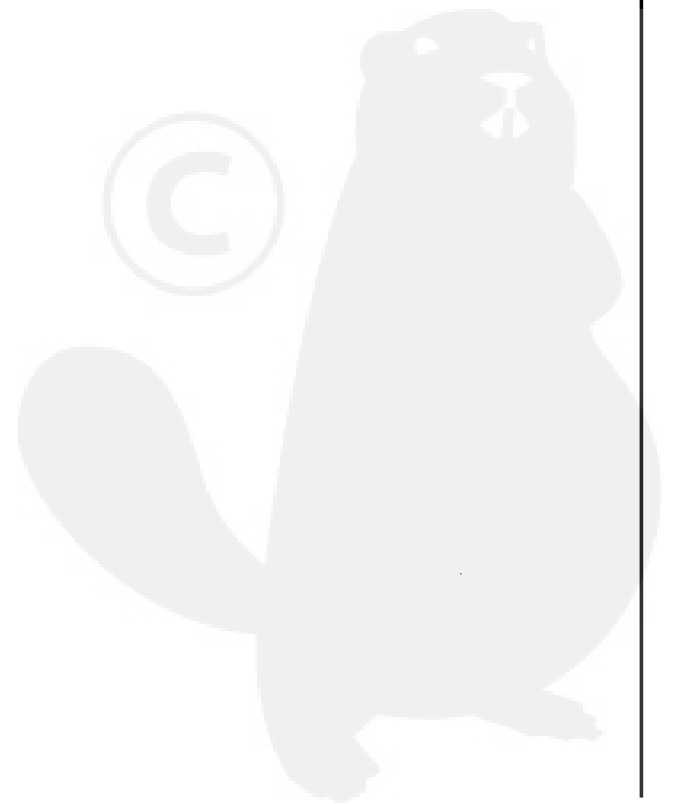
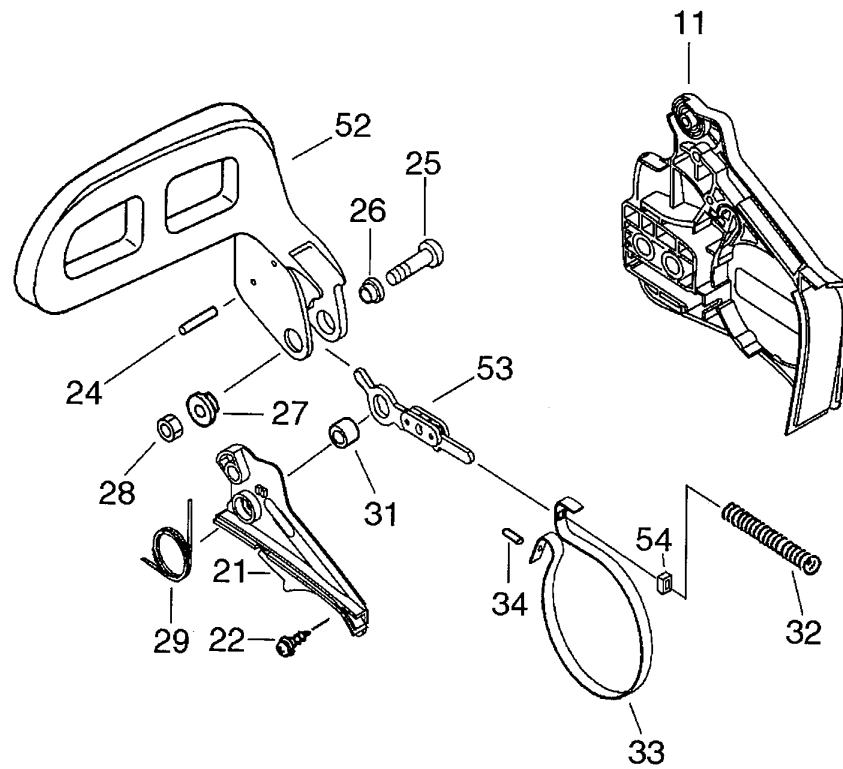


P a r t s L i s t

Group:Chain Saws Model:CS-350WES(36) Section:Clutch, Sprocket(Sr/Nr 36023861 and after)(10)

| Key | Lv | Part Number | Q'ty | Description | Remarks | Note |
|-----|----|--------------|------|-----------------------|---------------------|------|
| 32 | | V450-000070 | 1 | SPRING, COMPRESSION | | |
| 33 | | C328-000030 | 1 | BAND, BRAKE | | |
| 34 | | 93050-30098 | 1 | ROLLER | | |
| 42 | | X502-000020 | 1 | LABEL, ECHO | Sus. by X502-000340 | |
| 42 | | X502-000340 | 1 | LABEL, ECHO | | |
| 49 | | 431010-39930 | 1 | CHAIN, SAW 91VS-47E | | |
| 49 | | 431019-39930 | 1 | CHAIN, SAW 91VS-53E | | |
| 49 | | 431011-39430 | 1 | CHAIN, SAW 91VS-58E | | |
| 50 | | X122-000071 | 1 | BAR, GUIDE30RC50M-3/8 | | |
| 50 | | X123-000131 | 1 | BAR, GUIDE35RC50M-3/8 | | |
| 50 | | 430211-13432 | 1 | BAR, GUIDE 40RC50-3/8 | | |
| 52 | | C320-000045 | 1 | LEVER, BRAKE | Sus. by C320-000046 | |
| 52 | | C320-000046 | 1 | LEVER, BRAKE | | |
| 53 | | C334-000070 | 1 | CONNECTOR, BRAKE | | |
| 54 | | V376-000450 | 1 | SPACER | | |

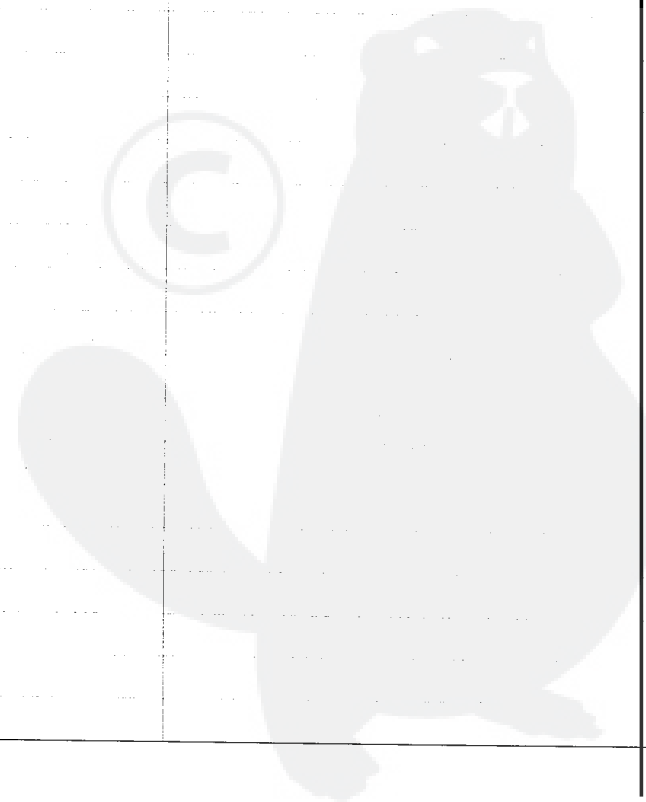


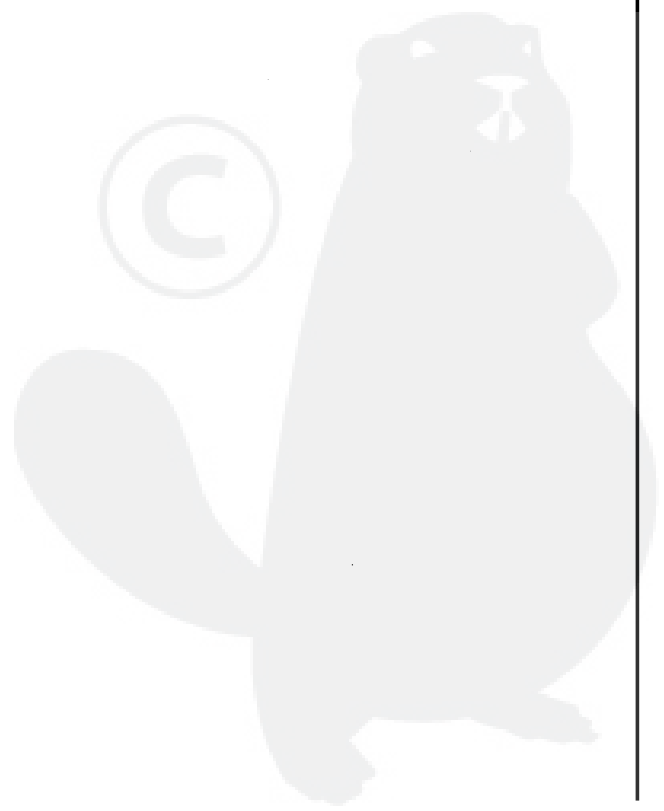
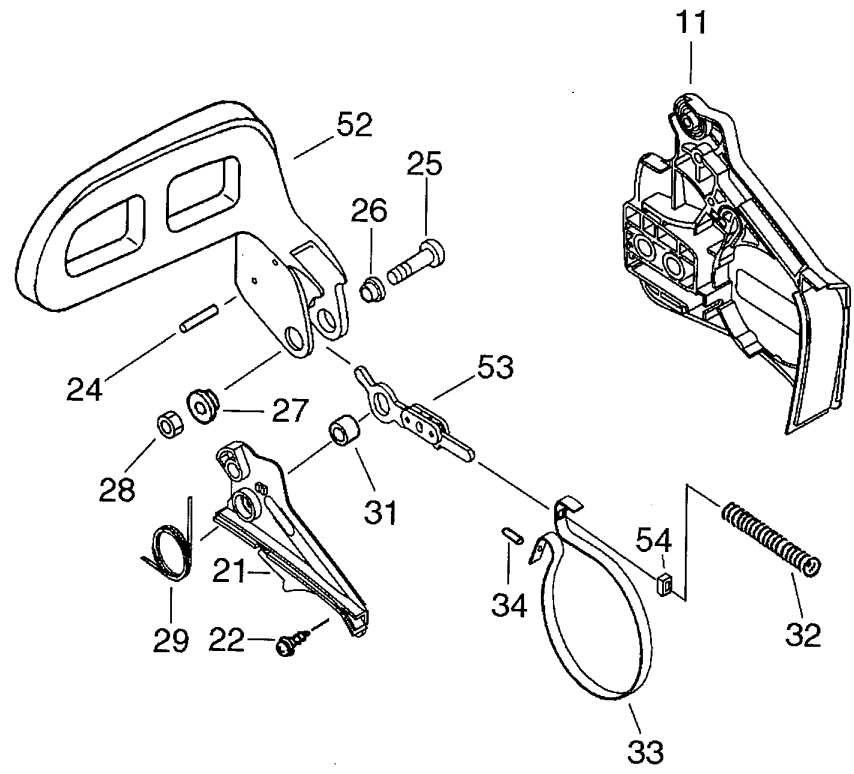


P a r t s L i s t

Group:Chain Saws Model:CS-350WES(36) Section:Chain Brake Asy(Sr/Nr 36023860 and before(11)

| Key | Lv | Part Number | Q'ty | Description | Remarks | Note |
|-----|----|--------------|------|---------------------|---------------------|------|
| | | C032-000213 | 1 | BRAKE,ASM CHAIN | Sus. by C032-000214 | |
| | | C032-000214 | 1 | BRAKE,ASM CHAIN | Sus. by C032-000215 | |
| 11 | + | C300-000241 | 1 | GUARD, SPROCKET | Sus. by C032-000242 | |
| 11 | + | C032-000242 | 1 | BRAKE,ASM CHAIN | | |
| 21 | + | C345-000084 | 1 | COVER, BRAKE | | |
| 22 | + | 900253-04012 | 3 | SCREW | | |
| 24 | + | 900330-30260 | 2 | ROLLER 3*26 | | |
| 25 | + | 91318-05032 | 1 | SCREW | | |
| 26 | + | 433167-39130 | 1 | SPACER | | |
| 27 | + | V353-000060 | 1 | COLLAR, 5 | | |
| 28 | + | 900562-50005 | 1 | LOCKNUT 5 | | |
| 29 | + | V452-000110 | 1 | SPRING, TORSION | | |
| 31 | + | 433116-35430 | 1 | SPACER 8 | | |
| 32 | + | V450-000070 | 1 | SPRING, COMPRESSION | | |
| 33 | + | C328-000030 | 1 | BAND, BRAKE | | |
| 34 | + | 93050-30098 | 1 | ROLLER | | |
| 52 | + | C320-000045 | 1 | LEVER, BRAKE | Sus. by C320-000046 | |
| 53 | + | C334-000070 | 1 | CONNECTOR, BRAKE | | |
| 54 | + | V376-000450 | 1 | SPACER | | |

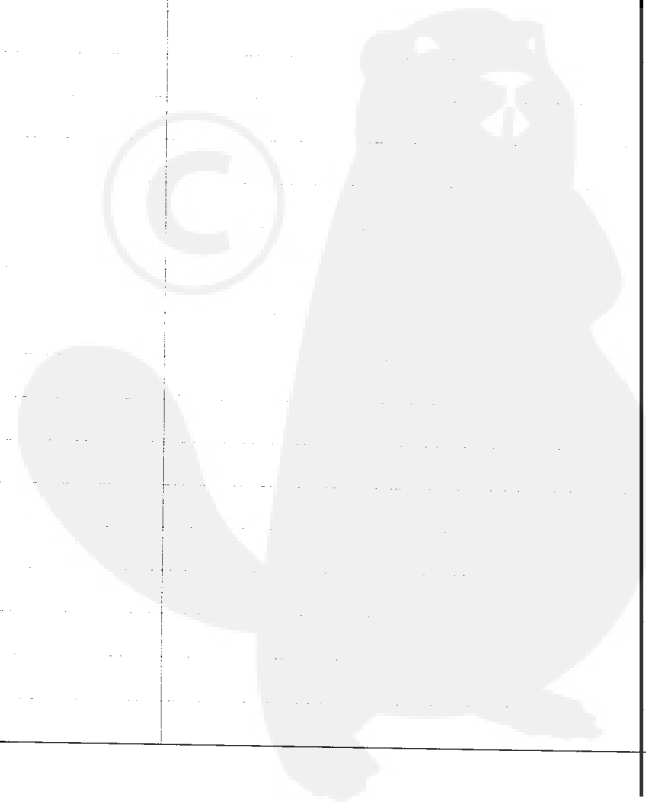


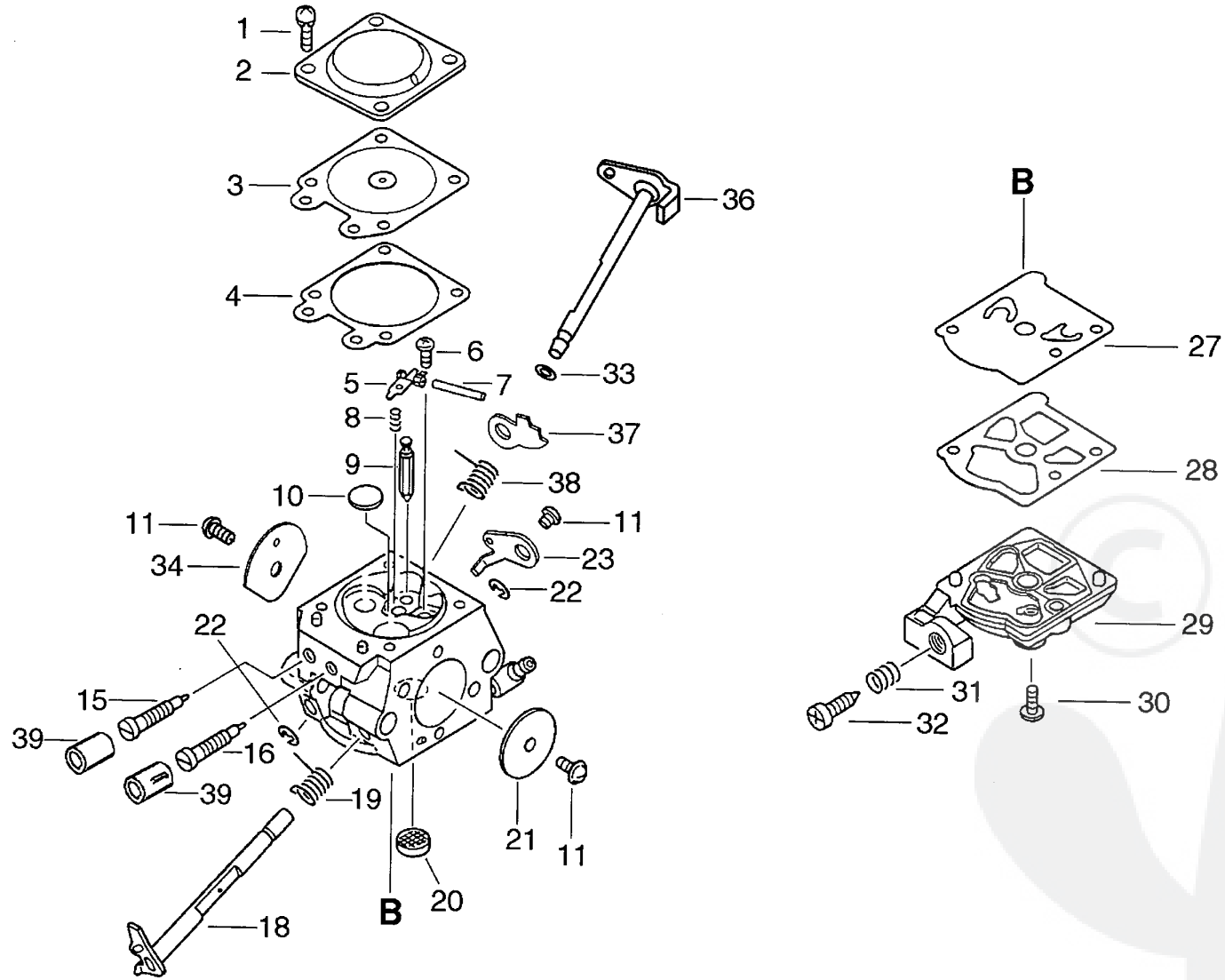


Parts List

Group:Chain Saws Model:CS-350WES(36) Section:Chain Brake Asy(Sr/Nr 36023861 and after) (12)

| Key | Lv | Part Number | Q'ty | Description | Remarks | Note |
|-----|----|--------------|------|---------------------|---------------------|------|
| | | C032-000213 | 1 | BRAKE,ASM CHAIN | Sus. by C032-000214 | |
| | | C032-000214 | 1 | BRAKE,ASM CHAIN | Sus. by C032-000215 | |
| | | C032-000215 | 1 | BRAKE,ASM CHAIN | | |
| 11 | + | C300-000241 | 1 | GUARD, SPROCKET | Sus. by C300-000242 | |
| 11 | + | C300-000242 | 1 | GUARD, SPROCKET | | |
| 21 | + | C345-000084 | 1 | COVER, BRAKE | | |
| 22 | + | 900253-04012 | 3 | SCREW | | |
| 24 | + | 900330-30260 | 2 | ROLLER 3*26 | | |
| 25 | + | 91318-05032 | 1 | SCREW | | |
| 26 | + | 433167-39130 | 1 | SPACER | | |
| 27 | + | V353-000060 | 1 | COLLAR, 5 | | |
| 28 | + | 900562-50005 | 1 | LOCKNUT 5 | | |
| 29 | + | V452-000110 | 1 | SPRING, TORSION | | |
| 31 | + | 433116-35430 | 1 | SPACER 8 | | |
| 32 | + | V450-000070 | 1 | SPRING, COMPRESSION | | |
| 33 | + | C328-000030 | 1 | BAND, BRAKE | | |
| 34 | + | 93050-30098 | 1 | ROLLER | | |
| 52 | + | C320-000045 | 1 | LEVER, BRAKE | Sus. by C320-000046 | |
| 52 | + | C320-000046 | 1 | LEVER, BRAKE | | |
| 53 | + | C334-000070 | 1 | CONNECTOR, BRAKE | | |
| 54 | + | V376-000450 | 1 | SPACER | | |

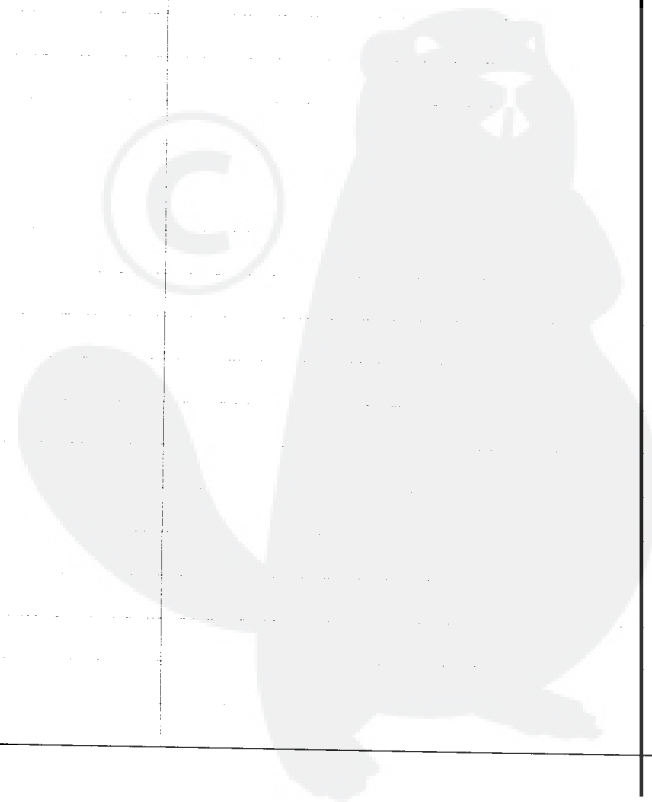




Parts List

Group:Chain Saws Model:CS-350WES(36) Section:Carburetor(13)

| Key | Lv | Part Number | Q'ty | Description | Remarks | Note |
|-----|----|--------------|------|----------------------|----------------------------|------|
| | | A021-001020 | 1 | CARBURETOR,DIAPHRAGM | Sus. by A021-001021 | |
| | | A021-001021 | 1 | CARBURETOR,DIAPHRAGM | Sr/Nr 36007690 and before | |
| 1 | + | 123130-02960 | 4 | SCREW | | |
| 2 | + | 123142-03930 | 1 | COVER, M. DIAPHRAGM | | |
| 3 | + | 123141-03930 | 1 | DIAPHRAGM, METERING | | |
| 4 | + | 123140-27230 | 1 | GASKET,M. DIAPHRAGM | | |
| 5 | + | 123123-03930 | 1 | LEVER, METERING | | |
| 6 | + | 123139-03930 | 1 | SCREW, M. LEVER PIN | | |
| 7 | + | 123138-03930 | 1 | PIN, METERING LEVER | | |
| 8 | + | 123122-39830 | 1 | SPRING, METER. LEVER | | |
| 9 | + | 123137-19830 | 1 | VALVE, INLET NEEDLE | | |
| 10 | + | 123146-10631 | 1 | PLUG, WELCH | | |
| 11 | + | 123114-38830 | 3 | SCREW | | |
| 15 | + | 123120-43131 | 1 | NEEDLE, HIGH SPEED | | |
| 16 | + | 123118-02261 | 1 | NEEDLE, IDLE | | |
| 18 | + | P003-000480 | 1 | SHAFT, THROTTLE | | |
| 19 | + | 123113-37530 | 1 | SPRING, THROTTLE RTN | | |
| 20 | + | 123126-10631 | 1 | SCREEN, INLET | | |
| 21 | + | 123116-03930 | 1 | VALVE, THROTTLE | Sr/Nr 36004400 and before | |
| 21 | + | 123116-10530 | 1 | VALVE, THROTTLE | Sr/Nr 36004401 to 36007690 | |
| 22 | + | 123127-15030 | 2 | RING | | |
| 23 | + | P003-001040 | 1 | LEVER THROTTLE | | |
| 27 | + | 123112-15030 | 1 | DIAPHRAGM, FUEL PUMP | | |
| 28 | + | 123125-15030 | 1 | GASKET, FUEL PUMP | | |
| 29 | + | 123124-24430 | 1 | COVER, FUEL PUMP | | |
| 30 | + | 123110-03930 | 1 | SCREW, PUMP COVER | | |
| 31 | + | 123133-04260 | 1 | SPRING, IDLE ADJUST | | |
| 32 | + | 123134-04260 | 1 | SCREW, IDLE ADJUST | | |

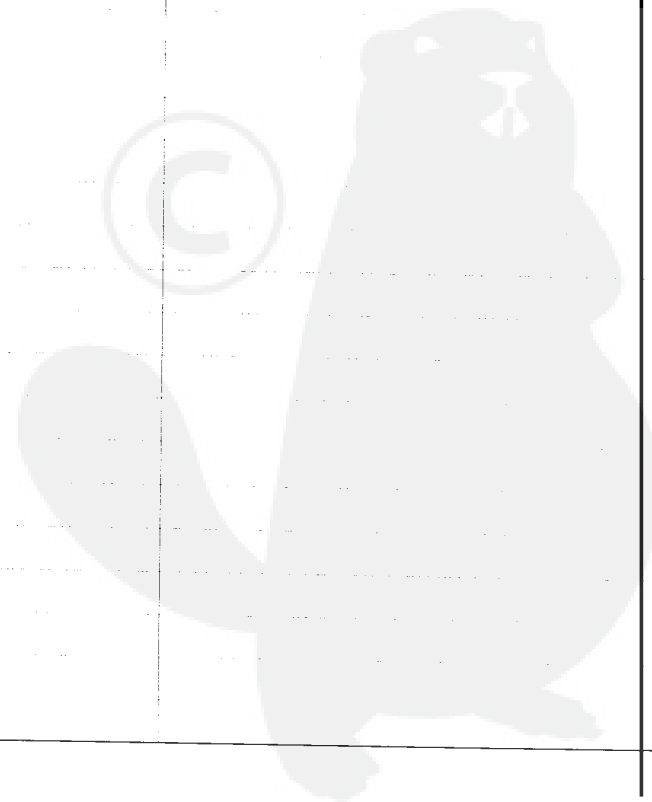


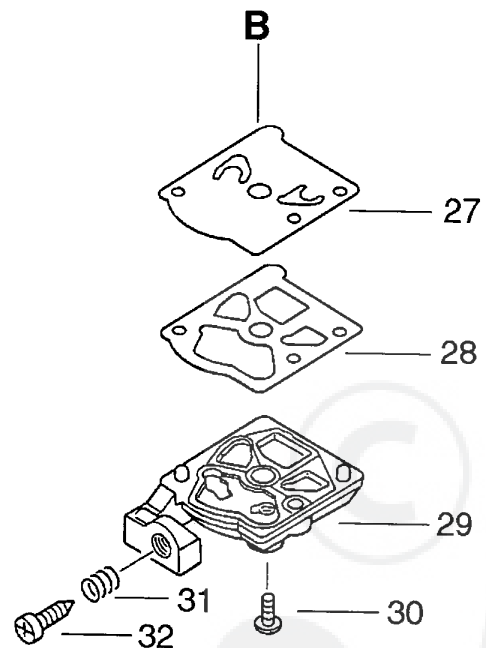
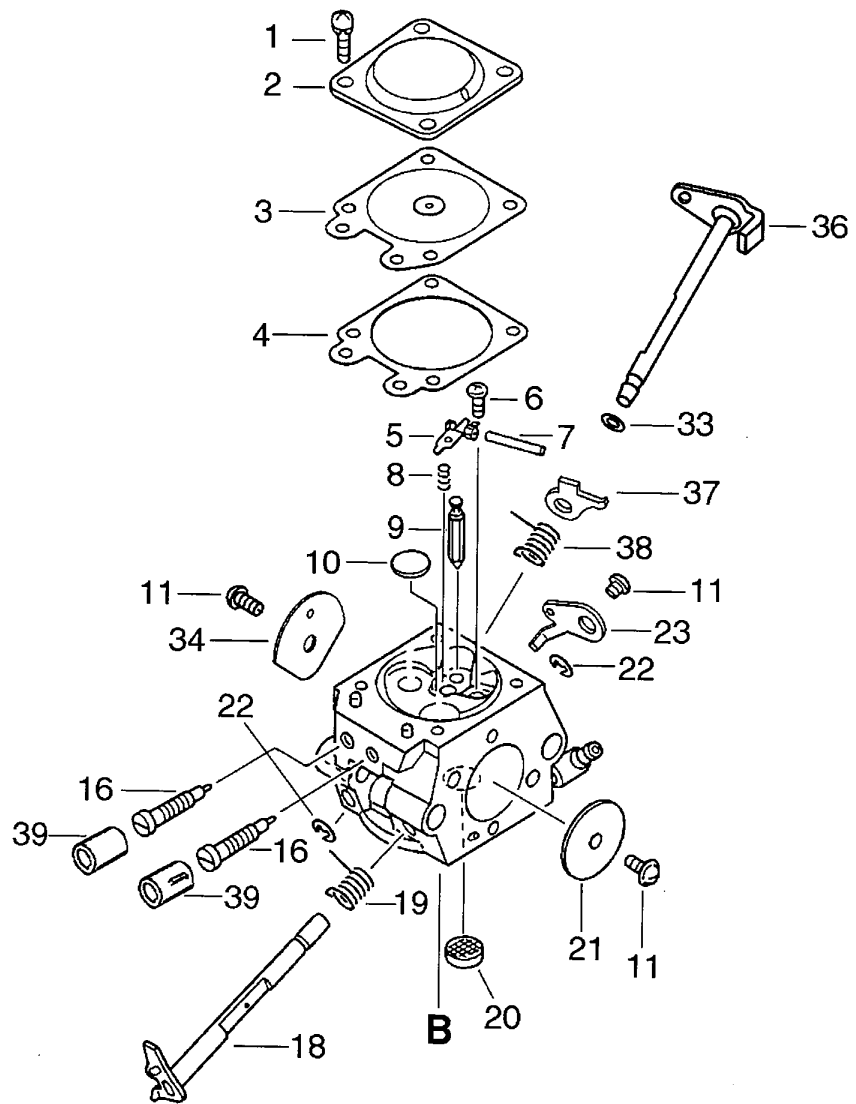
Parts List

Group:Chain Saws Model:CS-350WES(36) Section:Carburetor(13)

Date:5/01/2011 Page: 2

| Key | Lv | Part Number | Q'ty | Description | Remarks | Note |
|-----|----|--------------|------|-----------------|----------------------------|------|
| 33 | + | 123149-26030 | 1 | WASHER | | |
| 34 | + | 123132-37330 | 1 | VALVE, CHOKE | | |
| 36 | + | P003-001140 | 1 | SHAFT, CHOKE | | |
| 37 | + | P003-000160 | 1 | LEVER-FAST IDLE | Sr/Nr 36004400 and before | |
| 37 | + | P003-001480 | 1 | LEVER-FAST IDLE | Sr/Nr 36004401 to 36007690 | |
| 38 | + | P003-000140 | 1 | SPRING | Sr/Nr 36004400 and before | |
| 38 | + | P003-001470 | 1 | SPRING | Sr/Nr 36004401 to 36007690 | |
| 39 | + | P003-000010 | 2 | LIMITER CAP | | |

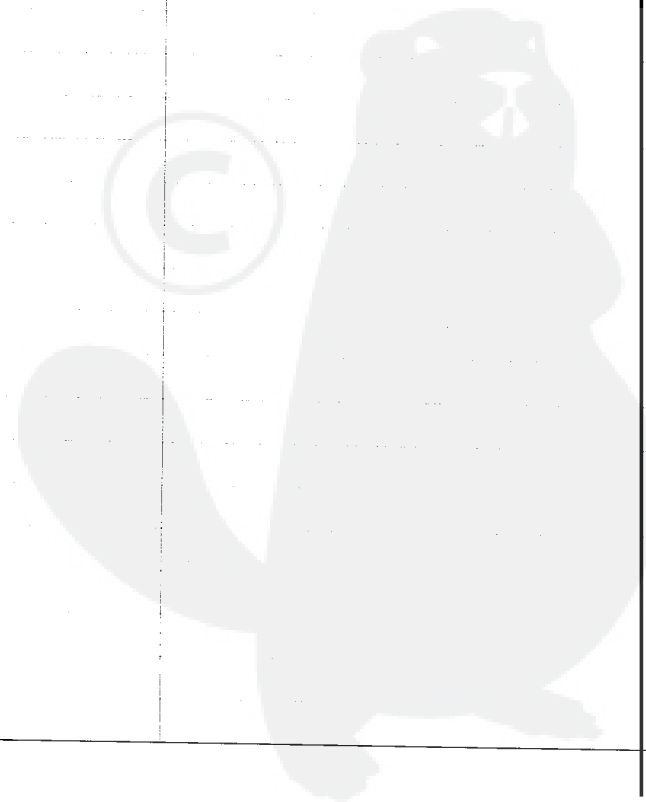




Parts List

Group:Chain Saws Model:CS-350WES(36) Section:Carburetor(14)

| Key | Lv | Part Number | Q'ty | Description | Remarks | Note |
|-----|----|--------------|------|-----------------------|--------------------------|------|
| | | A021-001190 | 1 | CARBURETOR, DIAPHRAGM | Sus. by A021-001191 | |
| | | A021-001191 | 1 | CARBURETOR, DIAPHRAGM | Sr/Nr 36007691 and after | |
| 1 | + | 123130-02960 | 4 | SCREW | | |
| 2 | + | 123142-03930 | 1 | COVER, M. DIAPHRAGM | | |
| 3 | + | 123141-03930 | 1 | DIAPHRAGM, METERING | | |
| 4 | + | 123140-27230 | 1 | GASKET, M. DIAPHRAGM | | |
| 5 | + | 123123-03930 | 1 | LEVER, METERING | | |
| 6 | + | 123139-03930 | 1 | SCREW, M. LEVER PIN | | |
| 7 | + | 123138-03930 | 1 | PIN, METERING LEVER | | |
| 8 | + | 123122-39830 | 1 | SPRING, METER. LEVER | | |
| 9 | + | 123137-19830 | 1 | VALVE, INLET NEEDLE | | |
| 10 | + | 123146-10631 | 1 | PLUG, WELCH | | |
| 11 | + | 123114-38830 | 3 | SCREW | | |
| 16 | + | 123118-02261 | 2 | NEEDLE, IDLE | | |
| 18 | + | P003-000480 | 1 | SHAFT, THROTTLE | | |
| 19 | + | 123113-37530 | 1 | SPRING, THROTTLE RTN | | |
| 20 | + | 123126-10631 | 1 | SCREEN, INLET | | |
| 21 | + | 123116-10530 | 1 | VALVE, THROTTLE | | |
| 22 | + | 123127-15030 | 2 | RING | | |
| 23 | + | P003-001040 | 1 | LEVER THROTTLE | | |
| 27 | + | 123112-15030 | 1 | DIAPHRAGM, FUEL PUMP | | |
| 28 | + | 123125-15030 | 1 | GASKET, FUEL PUMP | | |
| 29 | + | 123124-24430 | 1 | COVER, FUEL PUMP | | |
| 30 | + | 123110-03930 | 1 | SCREW, PUMP COVER | | |
| 31 | + | 123133-04260 | 1 | SPRING, IDLE ADJUST | | |
| 32 | + | 123134-04260 | 1 | SCREW, IDLE ADJUST | | |
| 33 | + | 123149-26030 | 1 | WASHER | | |
| 34 | + | 123132-35430 | 1 | VALVE, CHOKE | | |



Parts List

Group:Chain Saws Model:CS-350WES(36) Section:Carburetor(14)

| Key | Lv | Part Number | Q'ty | Description | Remarks | Note |
|-----|----|-------------|------|-----------------|---------------------|------|
| 36 | + | P003-001140 | 1 | SHAFT, CHOKE | | |
| 37 | + | P003-001480 | 1 | LEVER-FAST IDLE | Sus. by P003-001510 | |
| 37 | + | P003-001510 | 1 | LEVER-FAST IDLE | | |
| 38 | + | P003-001470 | 1 | SPRING | | |
| 39 | + | P003-000010 | 2 | LIMITER CAP | | |

