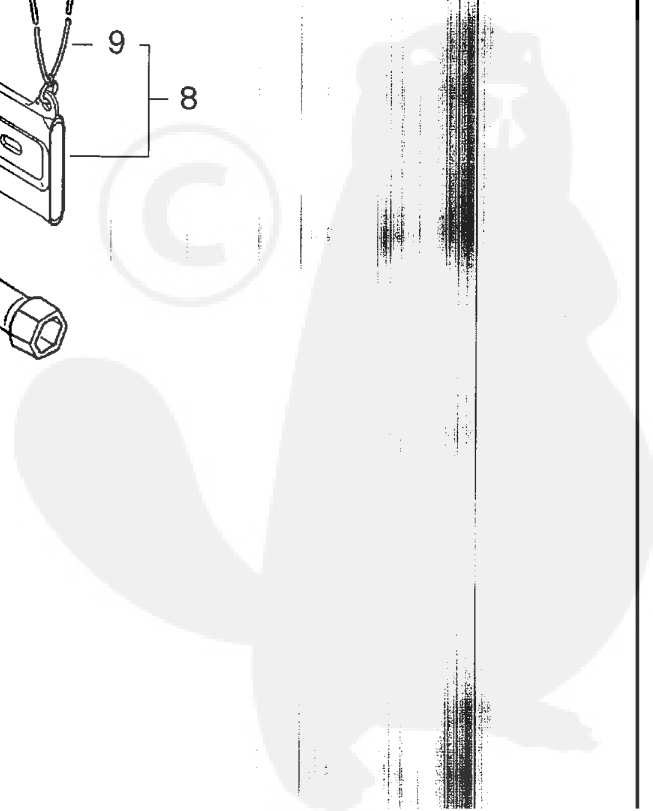
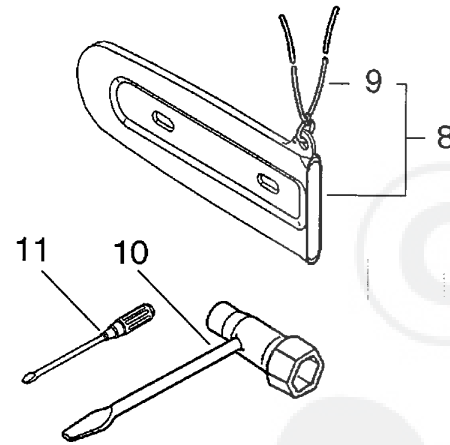
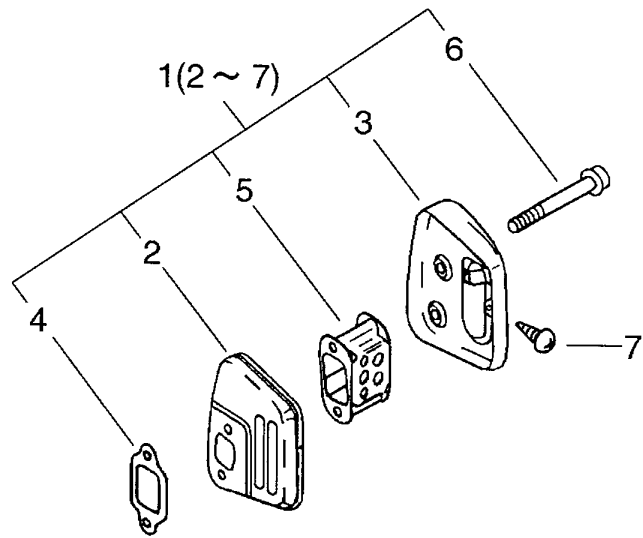


Parts List

Group:Chain Saws Model:CS-351WES(36) Section:Cylinder, Crankcase, Piston(1)

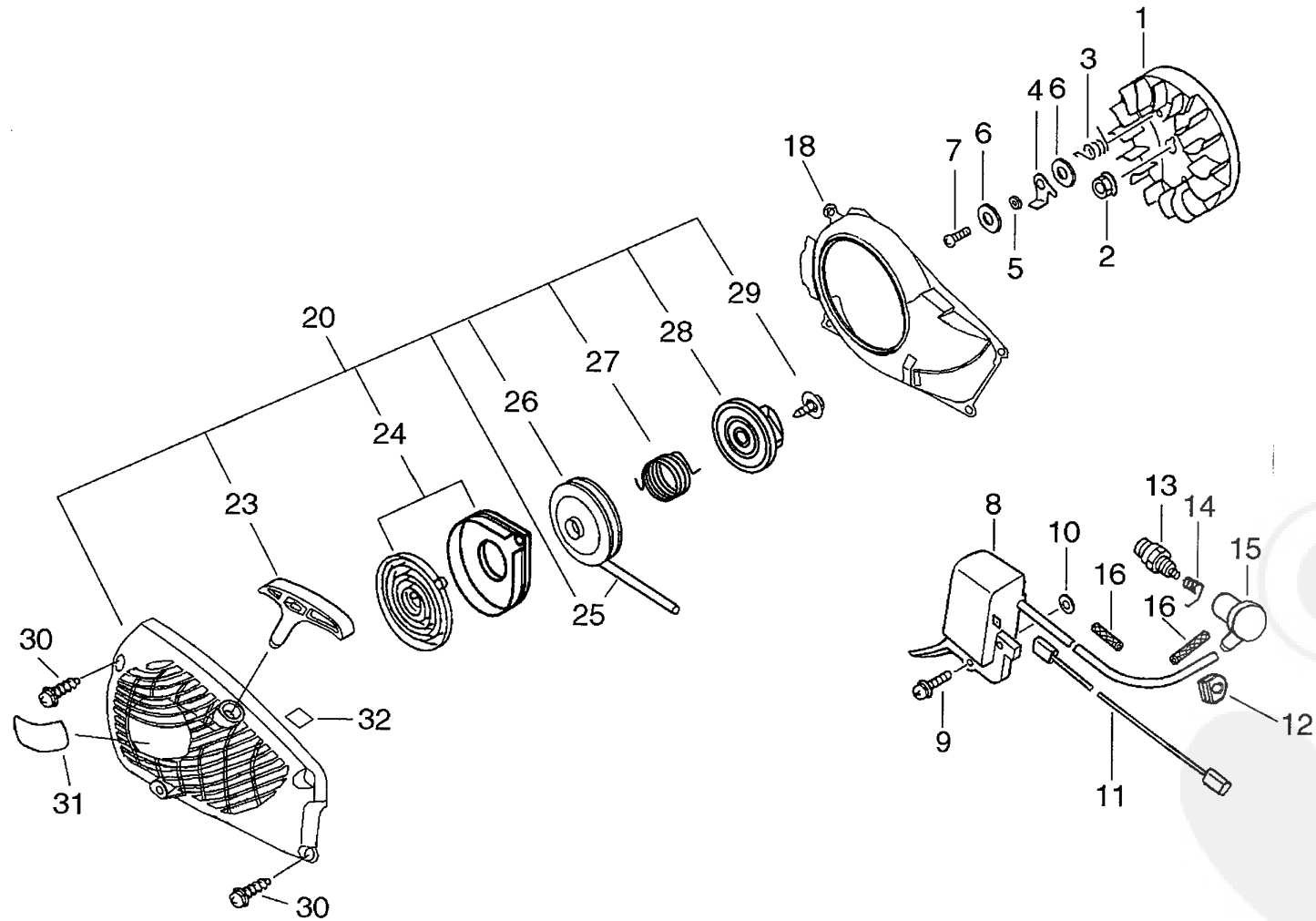
Key	Lv	Part Number	Q'ty	Description	Remarks	Note
1		P021-009250	1	CRANKCASE SET		
2	+	900162-05025	4	BOLT, H.S. 5*25		
3		P021-009230	1	PISTON KIT		
4	+	A101-000120	1	RING,PISTON		
5	+	100013-15330	1	PIN, PISTON		
6	+	100015-04630	2	CIRCLIP, PISTON PIN		
7	+	100014-60930	2	SPACER, PISTON PIN		
8	+	V553-000040	1	BEARING,NEEDLE 8		
9		P021-010701	1	CRANKSHAFT ASY		
10	+	94035-36201	2	BEARING BALL		
11	+	V505-000010	2	SEAL,OIL 12		
12		C305-000080	1	PLATE, SPROCKET GUARD		
13		V420-001110	1	CUSHION		
14		433011-03931	2	STUD, GUIDE BAR		
15		900253-04010	1	SCREW 4*10		
16		900106-05020	2	BOLT, H.S. 5*20		
17		P021-008741	1	DUSTCOVER SET		
18	+	V341-000040	1	WASHER, SQUARE		
19		163911-30130	1	PLUG		
20		P021-008676	1	COVER, ENGINE KIT		
21	+	900106-05030	2	BOLT, H.S.H. 5*30		
22	+	900724-00004	1	O-RING (S-4)		
23		900253-05020	1	SCREW 5*20		
24		C304-000000	1	SPIKE		
25		900253-05020	1	SCREW 5*20.		
26		900253-04012	2	SCREW		
27		100142-12330	1	KEY, WOODRUFF		
28		91420-05012	2	SCREW		



P a r t s L i s t

Group:Chain Saws Model:CS-351WES(36) Section:Muffler,Tools(2)

Key	Lv	Part Number	Q'ty	Description	Remarks	Note
1		P021-009930	1	MUFFLER ASY		
2 +		A300-000370	1	MUFFLER,EXHAUST		
3 +		A303-000041	1	LID,MUFFLER		
4 +		145510-13931	1	GASKET, MUFFLER		
5 +		A301-000000	1	PLATE,MUFFLER		
6 +		91107-05040	2	BOLT HSH FLANGE		
7 +		900250-04008	1	SCREW 4*8		
8		P021-006951	1	SCABBARD,CHAIN		
9 +		898568-14530	1	ROPE		
10		895410-03930	1	WRENCH, W/S. DRIVER		
11		895812-03930	1	DRIVER, SCREW 50		

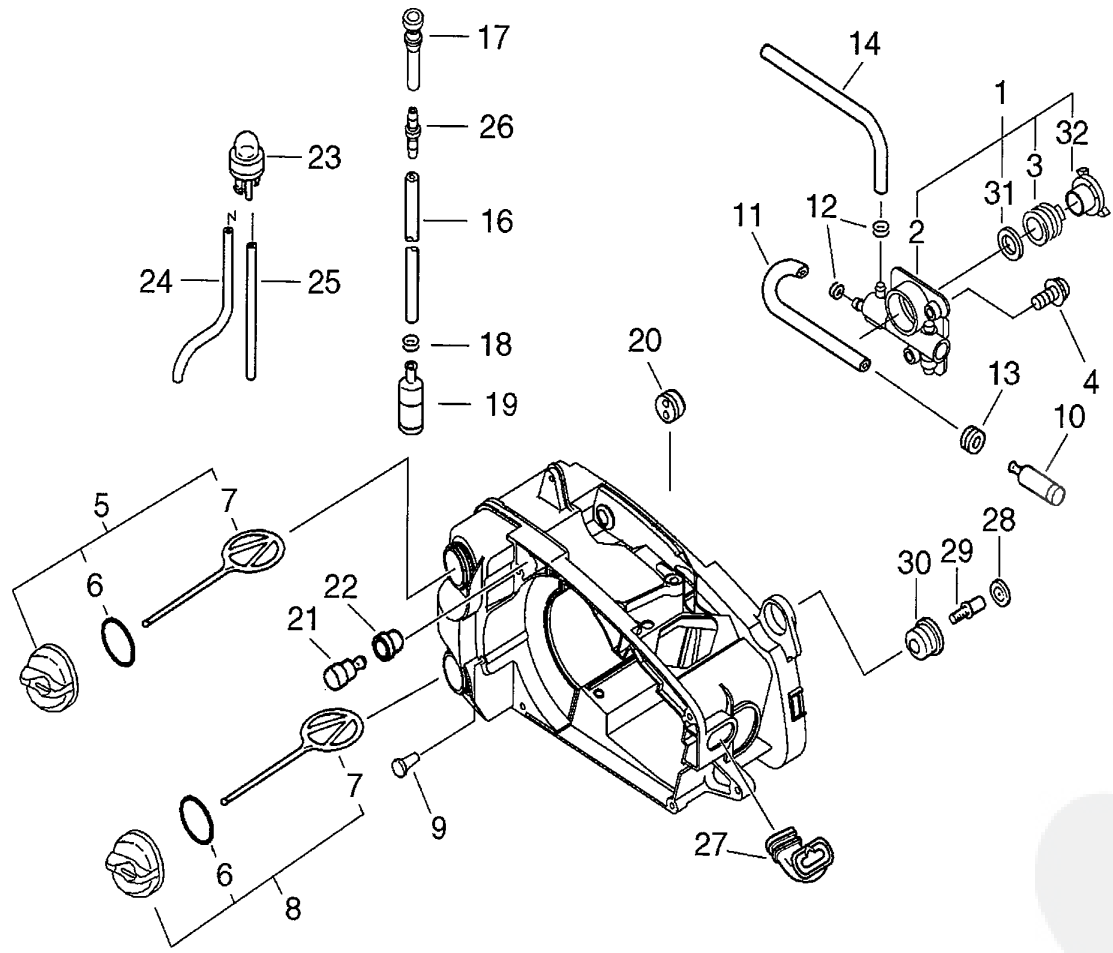


Parts List

Date: 19-11-2011 Page: 1

Group: Chain Saws Model: CS-351WES(36) Section: Starter, Magneto(3)

Key	Lv	Part Number	Q'ty	Description	Remarks	Note
1		A409-000170	1	ROTOR, MAGNETO		
2		900515-00008	1	NUT, FLANGE 8		
3		177234-35430	2	SPRING, RETURN		
4		A514-000020	2	PAWL		
5		177247-04630	2	SPACER, RATCHET		
6		900603-00005	4	WASHER 5		
7		V203-000080	2	BOLT, 5		
8		A411-000150	1	COIL, IGNITION		
9		900238-05022	2	SCREW 5*22		
10		150117-16430	2	SPACER		
11		V485-000550	1	LEAD		
12		156110-04920	1	BUSHING		
13		159010-10230	1	PLUG, SPARK (BPMR-7A		
14		A426-000000	1	TERMINAL, SPARKPLUG		
15		A427-000000	1	CAP, SPARK PLUG		
16		V475-002390	2	TUBE		
18		A172-000501	1	COVER, FAN		
20		A051-000802	1	STARTER, RECOIL		
23	+	P022-005891	1	GRIP, STARTER		
24	+	P022-001330	1	SPRING KIT, REWIND		
25	+	P022-008440	1	ROPE, STARTER		
26	+	A506-000030	1	REEL, ROPE		
27	+	V452-000220	1	SPRING, TORSION		
28	+	A507-000021	1	CATCHER, PAWL		
29	+	177236-61830	1	SCREW		
30		900256-04016	4	SCREW 4*16		
31		X502-000101	1	LABEL, ECHO		
32		X505-000180	1	LABEL, CAUTION		



Parts List

Date:19-11-2010 Page: 1

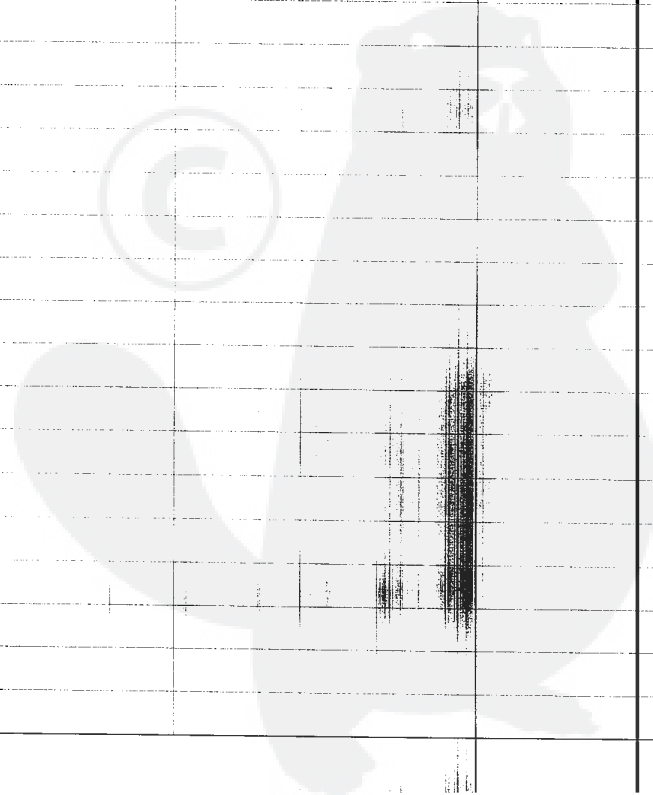
Group:Chain Saws Model:CS-351WES(36) Section:Auto-Oiler(4)

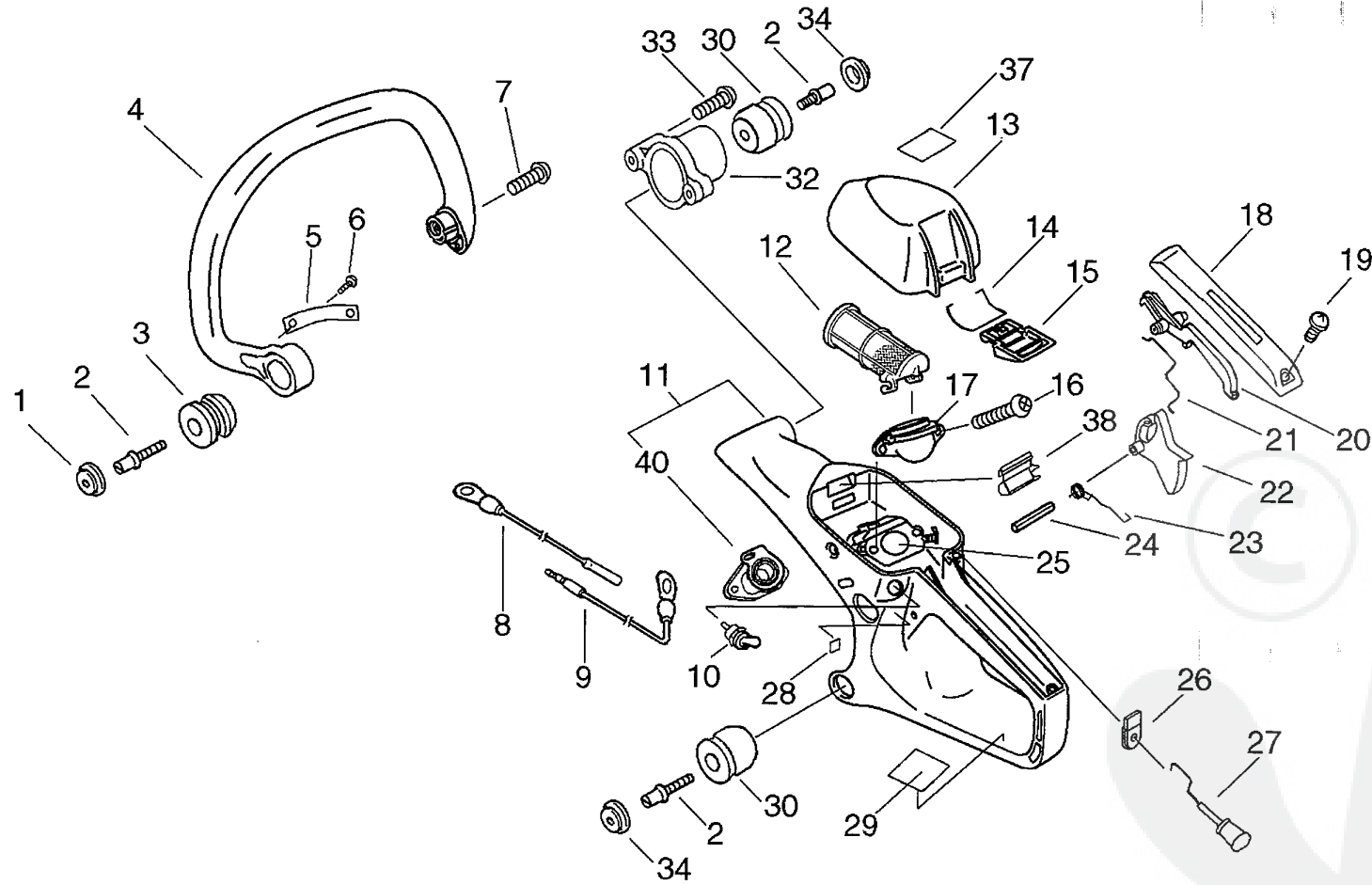
Key	Lv	Part Number	Q'ty	Description	Remarks	Note
1		P021-010890	1	AUTO-OILER ASY		
2	+	C022-000020	1	AUTO-OILER ASSEMBLY		
3	+	V652-000030	1	GEAR, WORM		
32	+	V356-000290	1	COLLAR, 10		
31	+	V308-000030	1	WASHER, CIRCULAR 11		
4		900238-04012	2	SCREW 4*12		
5		P021-005591	1	FUEL CAP ASY		
6	+	900720-00018	1	O-RING 18		
7	+	A365-000050	1	CONNECTOR, CAP		
8		P021-005581	1	OIL CAP ASY		
6	+	900720-00018	1	O-RING 18		
7	+	A365-000050	1	CONNECTOR, CAP		
9		436114-13930	1	VALVE, CHECK		
10		436205-02832	1	STRAINER, OIL		
11		V471-000740	1	PIPE		
12		132013-26630	2	CLIP		
13		132115-01461	1	GROMMET		
14		V471-000760	1	PIPE		
16		V471-000750	1	PIPE		
17		V470-000320	1	PIPE		
18		132013-09820	1	CLIP		
19		131205-14930	1	STRAINER, FUEL		
20		132115-44330	1	GROMMET		
21		131300-56430	1	VALVE, CHECK		
22		V137-000000	1	GROMMET, FUEL		
23		123181-39130	1	PUMP, PRIMER		
24		V471-001440	1	PIPE		
25		V471-001290	1	PIPE		

Parts List

Group:Chain Saws Model:CS-351WES(36) Section:Auto-Oiler(4)

Key	Lv	Part Number	Q'ty	Description	Remarks	Note
26		V186-000020	1	JOINT, PIPE		
27		A239-000030	1	PIPE, INTAKE		
28		100918-15130	1	CAP		
29		V202-000020	1	BOLT, 4		
30		100910-18830	1	CUSHION		





Parts List

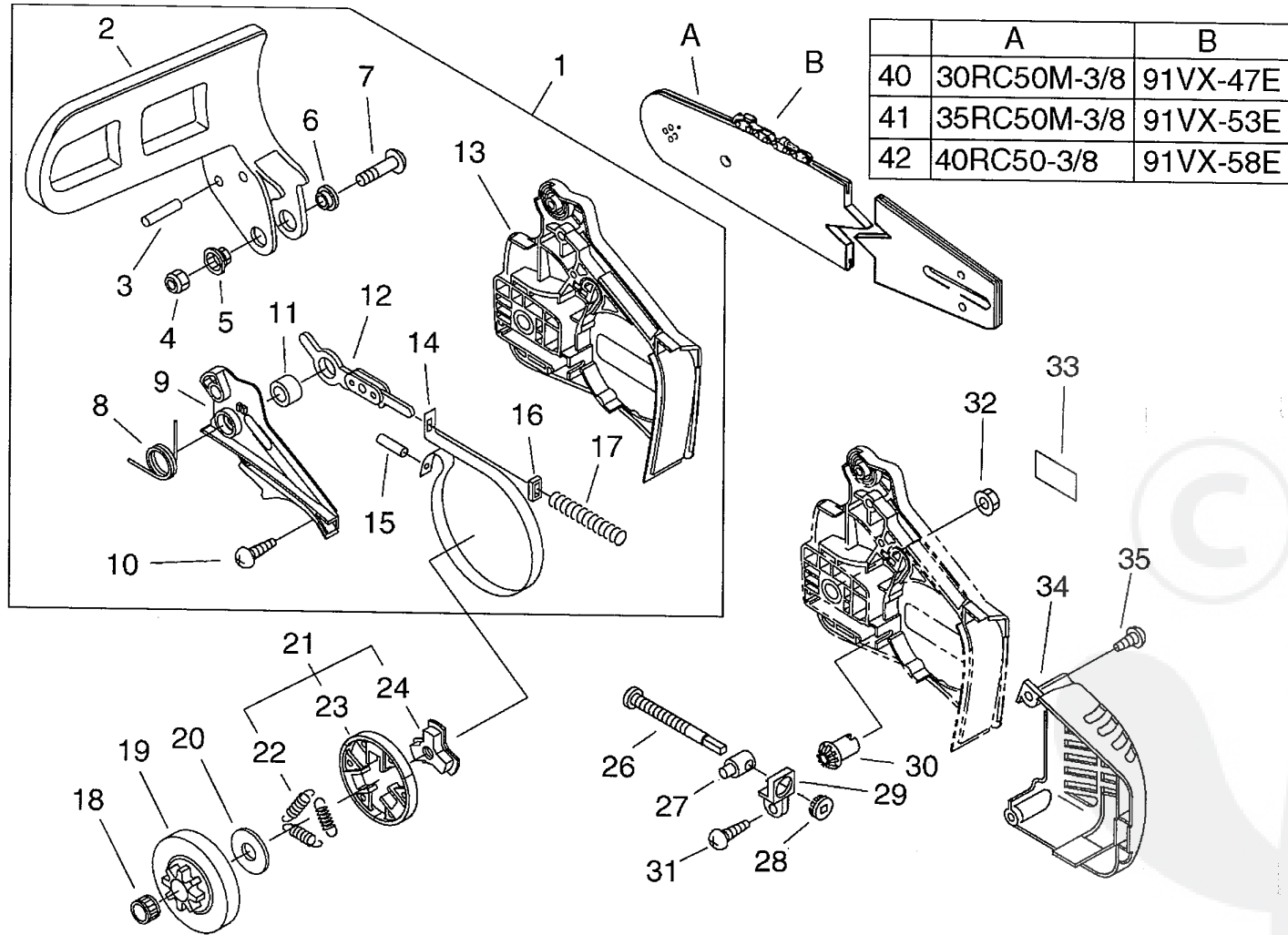
Group:Chain Saws Model:CS-351WES(36) Section:Handle(5)

Key	Lv	Part Number	Q'ty	Description	Remarks	Note
1		100918-14330	1	CAP, CUSHION		
2		V202-000020	3	BOLT, 4		
3		V401-000120	1	CUSHION, 5		
4		C400-000320	1	HANDLE, FRONT	Sus. by C400-000321	
4		C400-000321	1	HANDLE, FRONT		
5		C617-000200	1	STOPPER		
6		900253-04008	1	SCREW 4*8		
7		900253-05020	2	SCREW 5*20		
8		V485-000560	1	LEAD		
9		V485-000571	1	LEAD		
10		163400-38430	1	SWITCH, IGNITION		
11		P021-011541	1	HANDLE, REAR		
40. +		A202-000033	1	BELLOWS, INTAKE		
12		A226-000260	1	ELEMENT, AIR FILTER		
13		A232-000191	1	LID, CLEANER		
14		V582-000020	1	RING, SNAP		
15		A235-000140	1	KNOB, CLEANER LID		
16		900238-05050	2	SCREW 5*50		
17		A204-000060	1	ELBOW, CARBURETOR		
18		C411-000001	1	LID, HANDLE		
19		900253-04012	1	SCREW		
20		178090-37930	1	LOCKOUT, T. CONTROL		
21		C454-000110	1	ROD, THROTTLE		
22		C450-000140	1	TRIGGER, THROTTLE		
22		C450-000141	1	TRIGGER, THROTTLE		
23		178043-35430	1	SPRING, THR.RETURN	Sus. by V452-000260	
23		V452-000260	1	SPRING, TORSION		
24		900345-40025	1	PIN, SPRING 4*25SUS		

Parts List

Group:Chain Saws Model:CS-351WES(36) Section:Handle(5)

Key	Lv	Part Number	Q'ty	Description	Remarks	Note
25		A021-001560	1	CARBURETOR, DIAPHRAGM		
26		V130-000010	1	GROMMET, CHOKE		
27		A241-000060	1	KNOB, CHOKE		
28		890157-39130	1	LABEL, SWITCH		
29		890345-39230	1	LABEL, CAUTION		
30		V400-000070	2	CUSHION, 4		
32		V424-000000	1	SLEEVE, CUSHION		
33		900253-04016	2	SCREW 4*16		
34		100918-15130	2	CAP		
37		X503-009140	1	LABEL, MODEL		
38		V142-000020	1	GROMMET, DUST		



Parts List

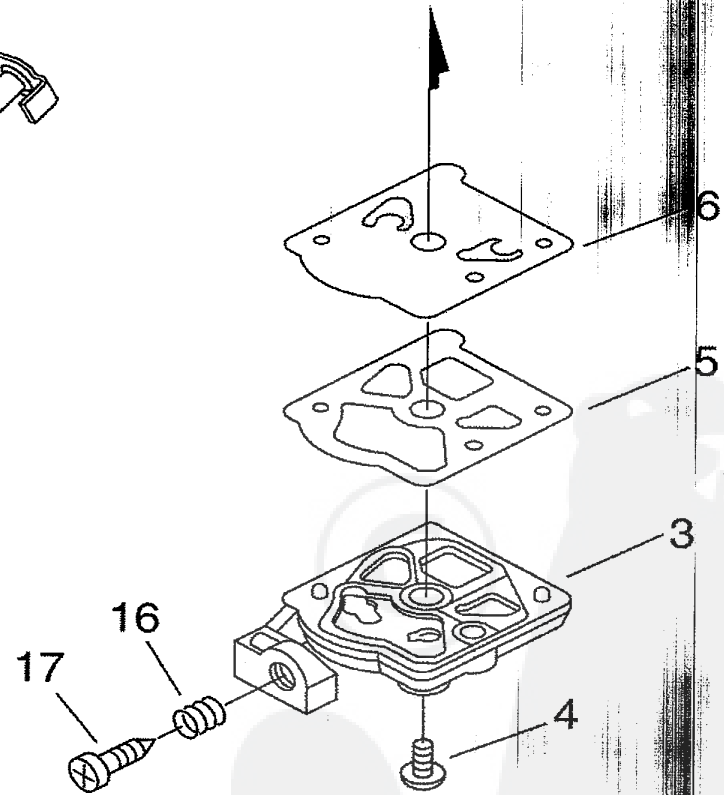
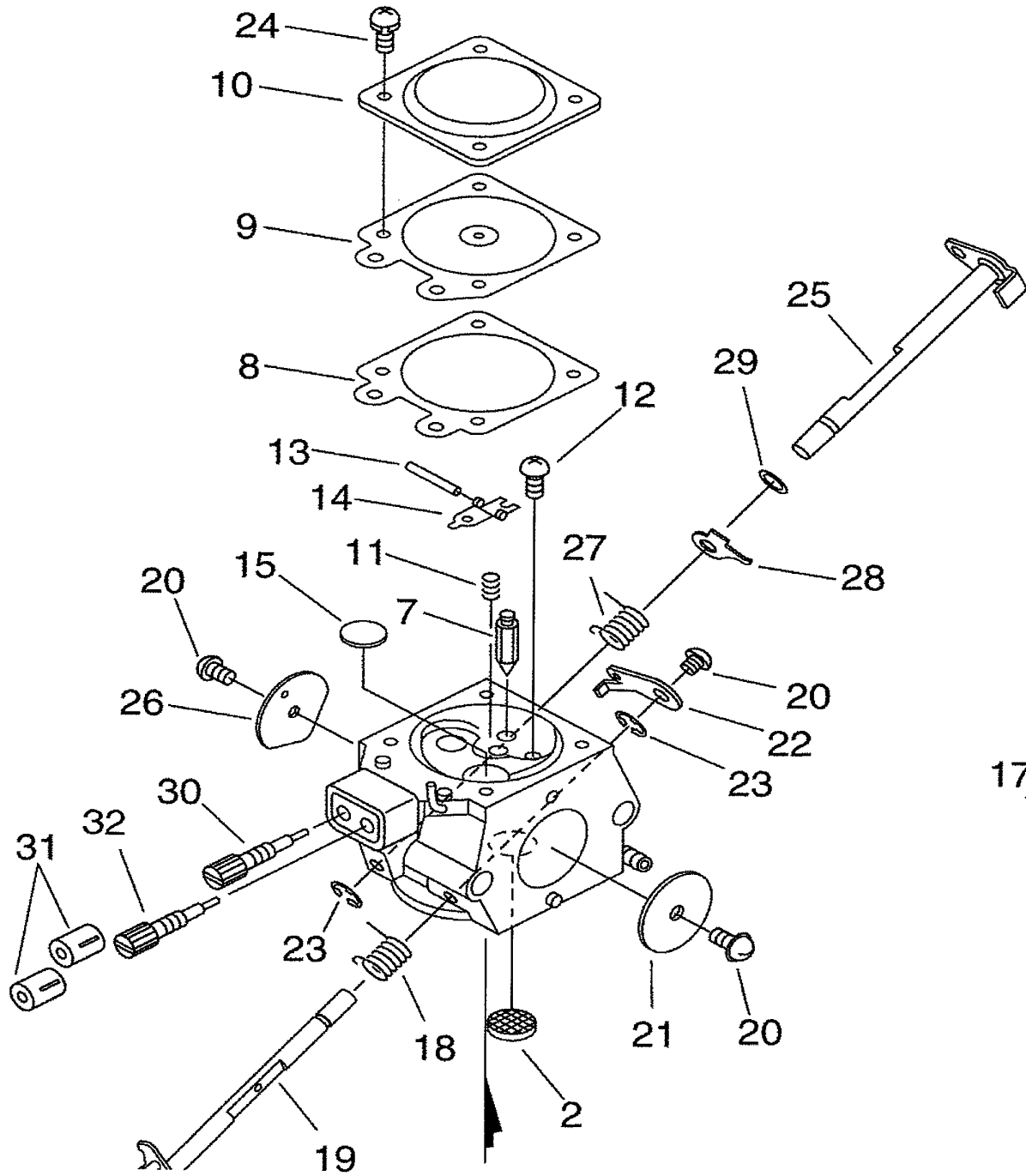
Group: Chain Saws Model: CS-351WES(36) Section: Clutch, Sprocket (6)

Key	Lv	Part Number	Q'ty	Description	Remarks	Note
1		C032-000215	1	BRAKE, ASM CHAIN		
2	+	C320-000046	1	LEVER, BRAKE		
3	+	900330-30260	2	ROLLER 3*26		
4	+	900562-50005	1	LOCKNUT 5		
5	+	V353-000060	1	COLLAR, 5		
6	+	433167-39130	1	SPACER		
7	+	91318-05032	1	SCREW		
8	+	V452-000110	1	SPRING, TORSION		
9	+	C345-000084	1	COVER, BRAKE		
10	+	900253-04012	3	SCREW		
11	+	433116-35430	1	SPACER 8		
12	+	C334-000070	1	CONNECTOR, BRAKE		
13	+	C300-000242	1	GUARD, SPROCKET		
14	+	C328-000030	1	BAND, BRAKE		
15	+	93050-30098	1	ROLLER		
16	+	V376-000450	1	SPACER		
17	+	V450-000070	1	SPRING, COMPRESSION		
18		175012-00831	1	BEARING, NEEDLE		
19		175005-39132	1	DRUM, CLUTCH		
20		A551-000010	1	PLATE, CLUTCH		
21		A056-000070	1	CLUTCH		
22	+	V451-000470	3	SPRING, TENSION		
23	+	A555-000060	3	SHOE, CLUTCH		
24	+	A552-000020	1	HUB, CLUTCH		
26		V203-000041	1	BOLT, 5		
27		C309-000030	1	TENSIONER, CHAIN		
28		V651-000011	1	GEAR, BEVEL		
29		V355-000140	1	COLLAR, 8		

P a r t s L i s t

Group:Chain Saws Model:CS-351WES(36) Section:Clutch, Sprocket(6)

Key	Lv	Part Number	Q'ty	Description	Remarks	Note
30		V651-000001	1	GEAR,BEVEL		
31		900253-04012	1	SCREW		
32		433019-03933	2	NUT, FLANGE 6		
33		X502-000340	1	LABEL,ECHO		
34		A320-000183	1	COVER,MUFFLER		
35		900253-04016	2	SCREW 4*16		
40A		X122-000071	1	BAR,GUIDE30RC50M-3/8		
40B		431010-39931	1	CHAIN, SAW 91VX-47E		
41A		X123-000131	1	BAR,GUIDE35RC50M-3/8		
41B		431019-39931	1	CHAIN,SAW		
42A		430211-13432	1	BAR,GUIDE 40RC50-3/8		
42B		431011-39431	1	CHAIN, SAW 91VX-58E		



P a r t s L i s t

Group:Chain Saws Model:CS-351WES(36) Section:Carburettor(7)

Key	Lv	Part Number	Q'ty	Description	Remarks	Note
		A021-001560	1	CARBURETOR, DIAPHRAGM		
2	+	123126-10631	1	SCREEN, INLET		
3	+	123124-24430	1	COVER, FUEL PUMP		
4	+	123110-03930	1	SCREW, PUMP COVER		
5	+	123125-15030	1	GASKET, FUEL PUMP		
6	+	123112-15030	1	DIAPHRAGM, FUEL PUMP		
7	+	123137-19830	1	VALVE, INLET NEEDLE		
8	+	123140-27230	1	GASKET, M. DIAPHRAGM		
9	+	123141-03930	1	DIAPHRAGM, METERING		
10	+	123142-03930	1	COVER, M. DIAPHRAGM		
11	+	123122-39830	1	SPRING, METER. LEVER		
12	+	123139-03930	1	SCREW, M. LEVER PIN		
13	+	123138-03930	1	PIN, METERING LEVER		
14	+	123123-03930	1	LEVER, METERING		
15	+	123146-10631	1	PLUG, WELCH		
16	+	123133-04260	1	SPRING, IDLE ADJUST		
17	+	123134-04260	1	SCREW, IDLE ADJUST		
18	+	123113-37530	1	SPRING, THROTTLE RTN		
19	+	P003-000480	1	SHAFT, THROTTLE		
20	+	123114-38830	3	SCREW		
21	+	123116-10530	1	VALVE, THROTTLE		
22	+	P003-001040	1	LEVER THROTTLE		
23	+	123127-15030	2	RING		
24	+	123130-02960	4	SCREW		
25	+	P003-001140	1	SHAFT, CHOKE		
26	+	123132-35430	1	VALVE, CHOKE		
27	+	P003-001470	1	SPRING		
28	+	P003-001510	1	LEVER-FAST IDLE		

