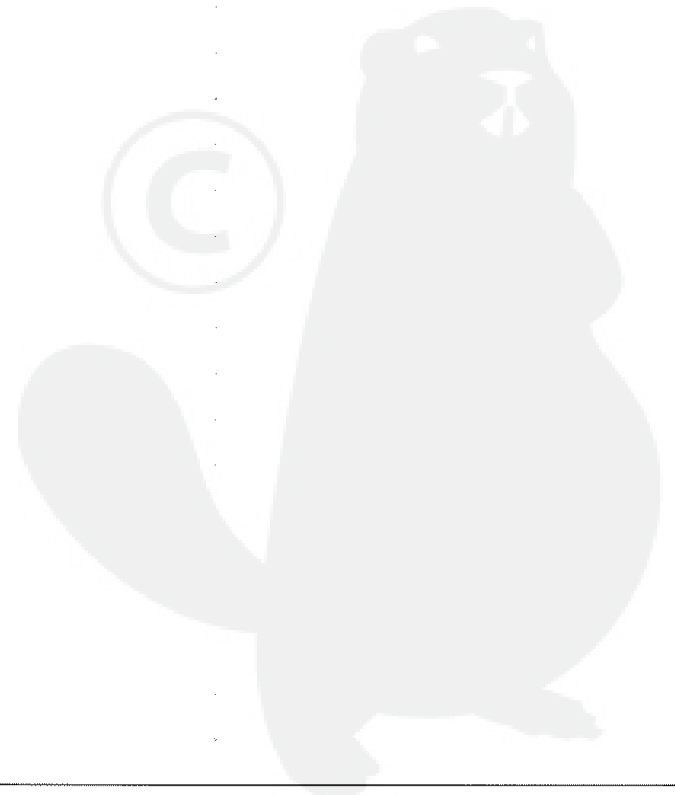


P a r t s L i s t

Group:Chain Saws Model:CS-4200ES(36) Section:Cylinder, Crankcase, Piston(Sr/Nr 36033993 and before)(1)

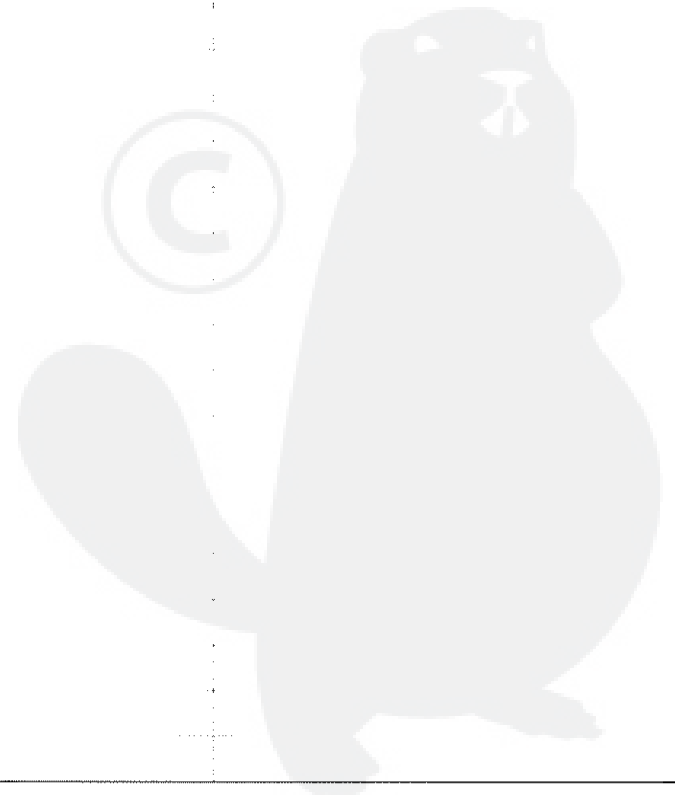
Key	Lv	Part Number	Q'ty	Description	Remarks	Note
2		900238-05012	2	SCREW 5*12		
3		130510-39932	1	ADAPTER, INTAKE		
4		130016-39930	1	GASKET, INTAKE		
5		P021-004131	1	CRANKCASE SET		
6 +		900162-05022	4	BOLT, H.S. 5*22		
7		900162-05030	4	BOLT, H.S. 5*30		
8		100000-59531	1	PISTON KIT		
9 +		100011-37330	1	RING, PISTON		
10 +		100013-35430	1	PIN, PISTON		
11 +		100015-03931	2	CIRCLIP, PISTON PIN		
12 +		100012-35430	1	BEARING, NEEDLE		
13		100142-39130	1	KEY, WOODRUFF		
14		P021-007240	1	CRANKSHAFT ASY		
15 +		900888-36201	2	BEARING, BALL 6201		
16 +		V505-000010	2	SEAL,OIL 12		
17 +		437063-38330	1	GEAR, WORM		
20		163890-38330	3	BOLT, 5		
23		101520-35430	1	COVER		
27		433000-60930	1	CATCHER KIT, CHAIN		
28 +		900253-05020	1	SCREW 5*20		
30		100918-19830	2	CAP, CUSHION		
31		100915-33930	2	SCREW		
32		100910-60030	2	CUSHION		
33		P021-007180	1	COVER, ENGINE	Sus. by P021-007181	
33		P021-007181	1	COVER, ENGINE		
29 +		101520-35430	1	COVER		
35 +		606416-60631	1	WIRE		
38 +		433011-19830	2	STUD, GUIDE BAR		

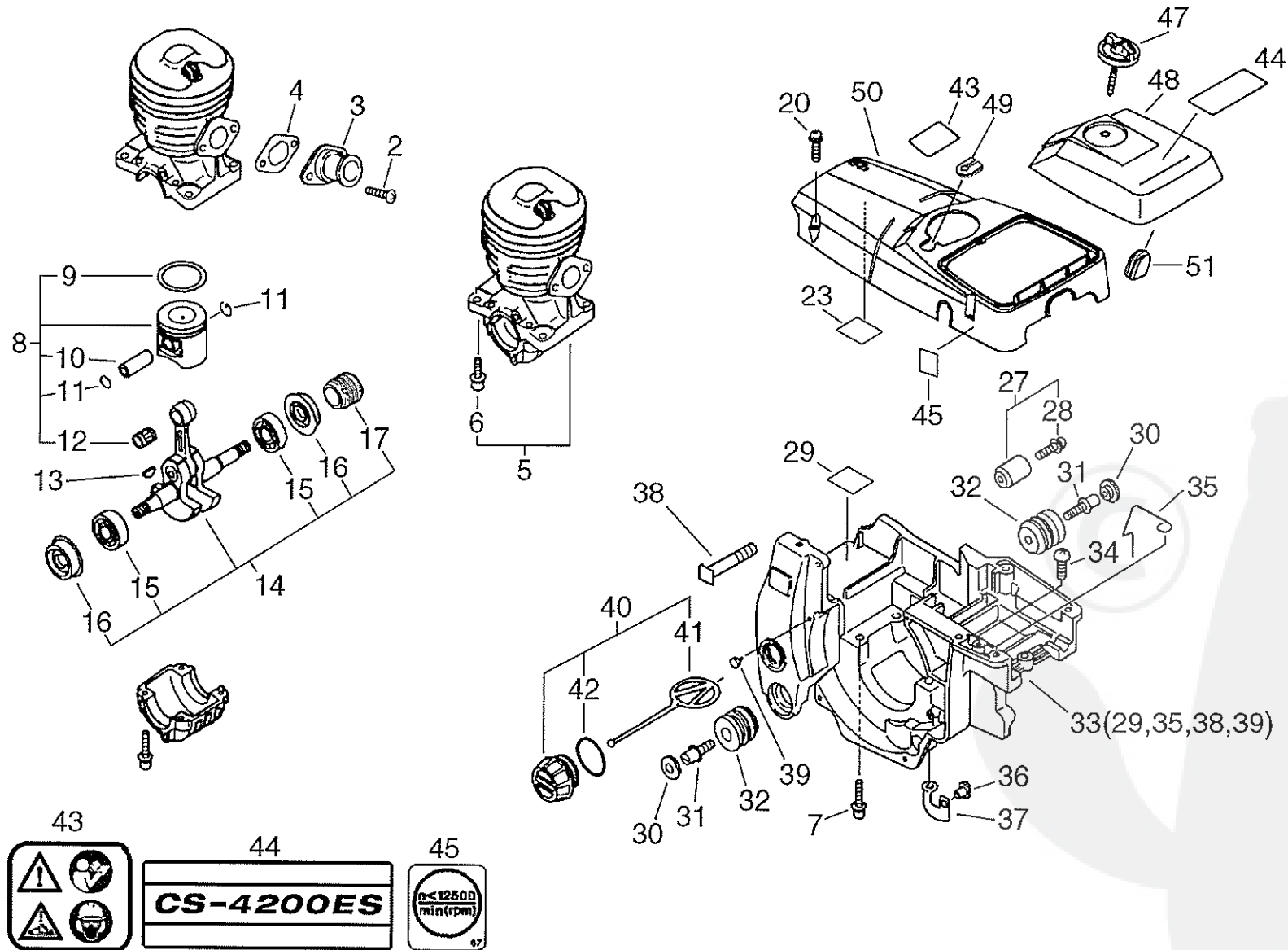


P a r t s L i s t

Group:Chain Saws Model:CS-4200ES(36) Section:Cylinder, Crankcase, Piston(Sr/Nr 36033993 and before)(1)

Key	Lv	Part Number	Q'ty	Description	Remarks	Note
39	+	436114-13930	1	VALVE, CHECK		
34		900253-04008	1	SCREW 4*8		
36		130020-60630	2	NUT 5		
37		162011-60630	1	PLATE, GROUND		
40		436001-65631	1	CAP, OIL	Sus. by 436001-39232	
40		436001-39232	1	CAP, OIL		
41	+	A365-000050	1	CONNECTOR,CAP		
42	+	900725-02025	1	O-RING	Sus. by 900721-00025	
42	+	900721-00025	1	O-RING		
43		890345-39230	1	LABEL, CAUTION		
44		X503-006140	1	LABEL, MODEL	Sus. by X503-006141	
44		X503-006141	1	LABEL, MODEL		
45		890631-38130	1	LABEL, CAUTION		
47		A235-000020	1	KNOB,CLEANER LID		
48		A232-000020	1	LID,CLEANER	Sus. by A232-000021	
48		A232-000021	1	LID,CLEANER	Sus. by A232-000022	
49		V135-000010	1	GROMMET, HT CORD		
50		A160-000014	1	COVER,CYLINDER		
51		130338-32430	1	PLUG, COVER		

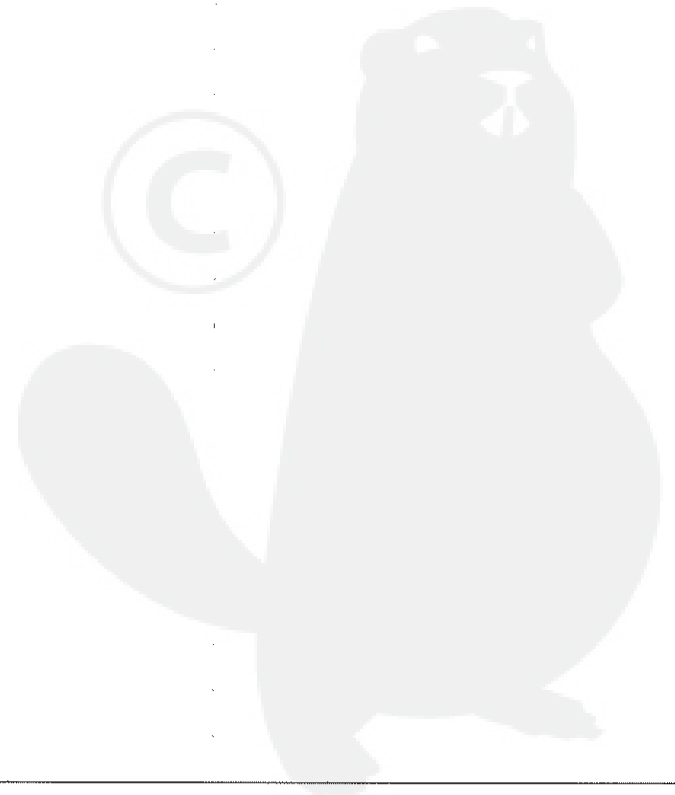




Parts List

Group:Chain Saws Model:CS-4200ES(36) Section:Cylinder, Crankcase, Piston(Sr/Nr 36033994 and after)(2)

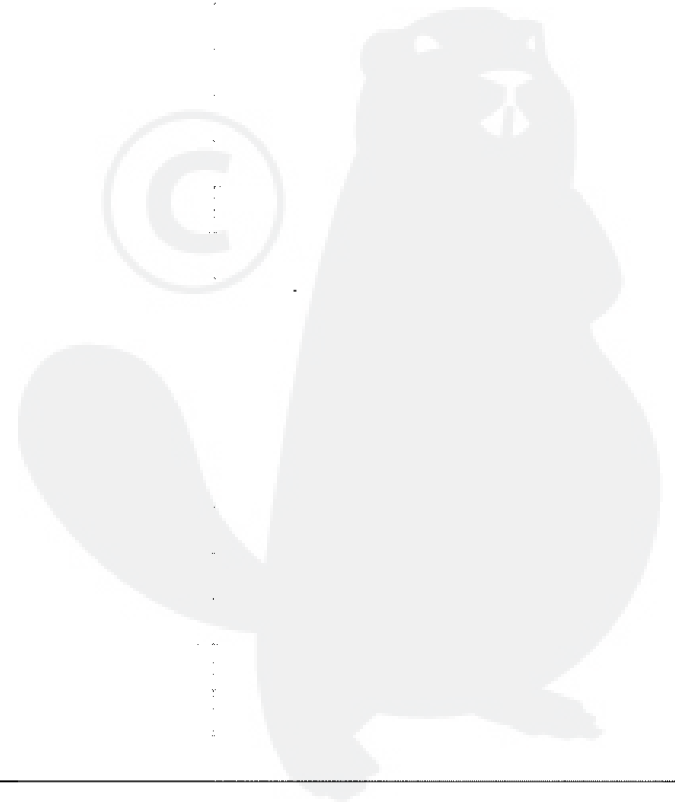
Key	Lv	Part Number	Q'ty	Description	Remarks	Note
2		900238-05012	2	SCREW 5*12		
3		130510-39932	1	ADAPTER, INTAKE		
4		130016-39930	1	GASKET, INTAKE		
5		P021-004131	1	CRANKCASE SET		
6 +		900162-05022	4	BOLT, H.S. 5*22		
7		900162-05030	4	BOLT, H.S. 5*30		
8		100000-59531	1	PISTON KIT		
9 +		100011-37330	1	RING, PISTON		
10 +		100013-35430	1	PIN, PISTON		
11 +		100015-03931	2	CIRCLIP, PISTON PIN		
12 +		100012-35430	1	BEARING, NEEDLE		
13		100142-39130	1	KEY, WOODRUFF		
14		P021-007240	1	CRANKSHAFT ASY		
15 +		900888-36201	2	BEARING, BALL 6201		
16 +		V505-000010	2	SEAL,OIL 12		
17 +		437063-38330	1	GEAR, WORM		
20		163890-38330	3	BOLT, 5		
23		101520-35430	1	COVER		
27		433000-60930	1	CATCHER KIT, CHAIN		
28 +		900253-05020	1	SCREW 5*20		
30		100918-19830	2	CAP, CUSHION		
31		100915-33930	2	SCREW		
32		100910-60030	2	CUSHION		
33		P021-007180	1	COVER, ENGINE		
29 +		101520-35430	1	COVER		
35 +		606416-60631	1	WIRE		
38 +		433011-19830	2	STUD, GUIDE BAR		
39 +		436114-13930	1	VALVE, CHECK		

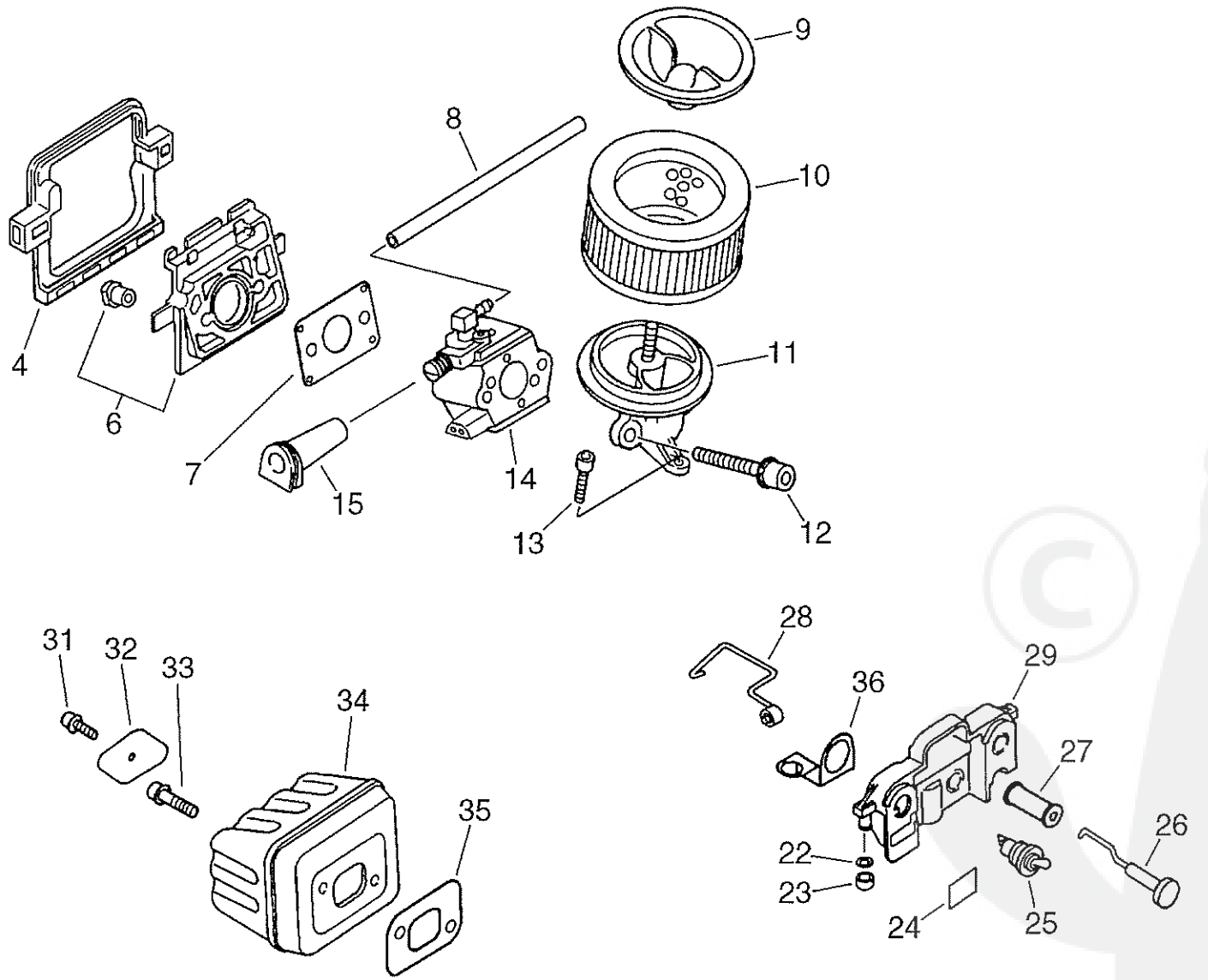


Parts List

Group:Chain Saws Model:CS-4200ES(36) Section:Cylinder, Crankcase, Piston(Sr/Nr 36033994 and after)(2)

Key	Lv	Part Number	Q'ty	Description	Remarks	Note
34		900253-04008	1	SCREW 4*8		
36		130020-60630	2	NUT 5		
37		162011-60630	1	PLATE, GROUND		
40		436001-39232	1	CAP, OIL		
41	+	A365-000050	1	CONNECTOR,CAP		
42	+	900721-00025	1	O-RING 25		
43		890345-39230	1	LABEL,CAUTION		
44		X503-006141	1	LABEL,MODEL		
45		890631-38130	1	LABEL, CAUTION		
47		A235-000020	1	KNOB,CLEANER LID		
48		A232-000021	1	LID,CLEANER	Sus. by A232-000022	
48		A232-000022	1	LID,CLEANER	Sus. by A232-000023	
48		A232-000023	1	LID,CLEANER		
49		V135-000010	1	GROMMET,HT CORD		
50		A160-000015	1	COVER,CYLINDER		
51		130338-32430	1	PLUG, COVER		

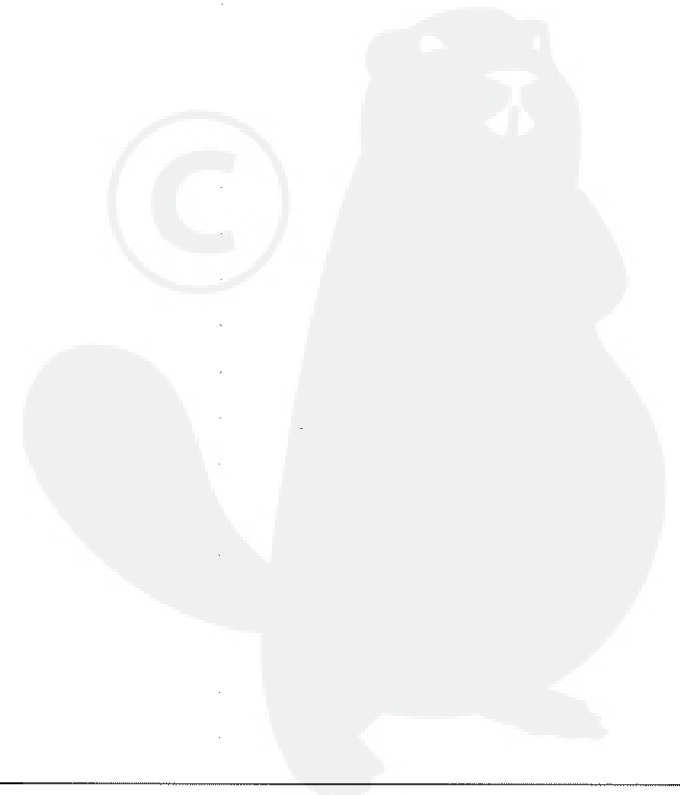




P a r t s L i s t

Group:Chain Saws Model:CS-4200ES(36) Section:Air Cleaner, Muffler(Sr/Nr 36033993 and before) (3)

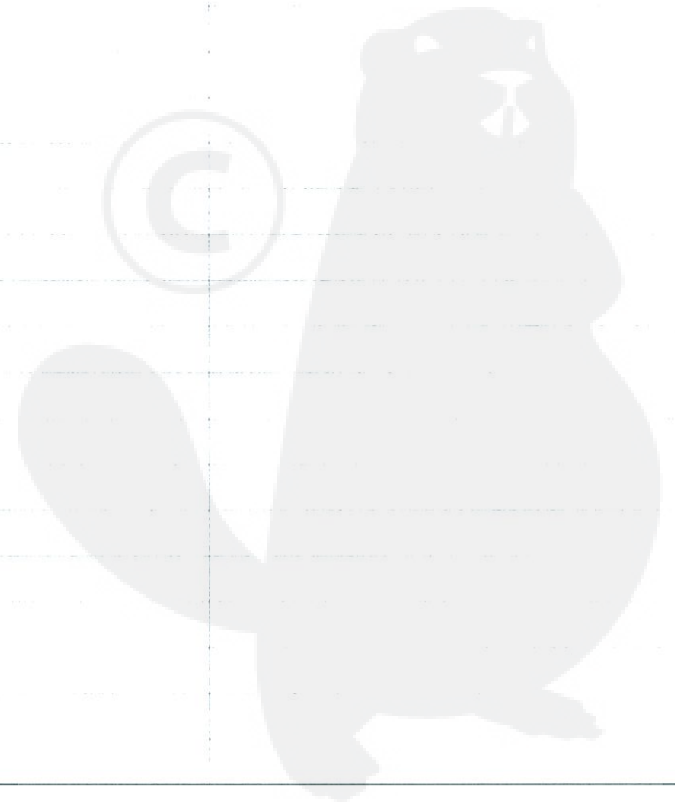
Key	Lv	Part Number	Q'ty	Description	Remarks	Note
4		130366-39930	1	CUSHION		
6		130007-39931	1	INSULATOR		
7		130010-38330	1	GASKET, INTAKE		
8		130110-54430	1	PIPE, IMPULSE		
9		130405-38331	1	BRACKET, AIR CLEANER	Sus. by 130405-38332	
10		130300-39730	1	CLEANER ASM., AIR		
11		130301-39931	1	ADAPTER, INTAKE	Sus. by 130301-39933	
11		130301-39932	1	ADAPTER, INTAKE	Sus. by 130301-39933	
11		130301-39933	1	ADAPTER, INTAKE		
12		900162-05050	2	BOLT, H.S. 5*50		
13		900253-05016	1	SCREW		
14		A021-000220	1	CARBURETOR, DIAPHRAGM		
15		129023-39930	1	GROMMET, IDLE		
22		900600-00005	2	WASHER 5		
23		351134-39930	2	CUSHION		
24		890157-39130	1	LABEL, SWITCH		
25		163400-35430	1	SWITCH, IGNITION		
26		178510-38331	1	ROD, CHOKE	Sus. by A241-000100	
26		A241-000100	1	KNOB, CHOKE		
27		178810-14532	1	GROMMET	Sus. by 178810-14534	
27		178810-14533	1	GROMMET	Sus. by 178810-14534	
27		178810-14534	1	GROMMET		
28		C454-000011	1	ROD, THROTTLE	Sus. by C454-000012	
28		C454-000012	1	ROD, THROTTLE		
29		163810-59532	1	BRACKET, SWITCH	Sus. by 163810-59535	
29		163810-59533	1	BRACKET, SWITCH	Sus. by 163810-59535	
29		163810-59534	1	BRACKET, SWITCH	Sus. by 163810-59535	
29		163810-59535	1	BRACKET, SWITCH		

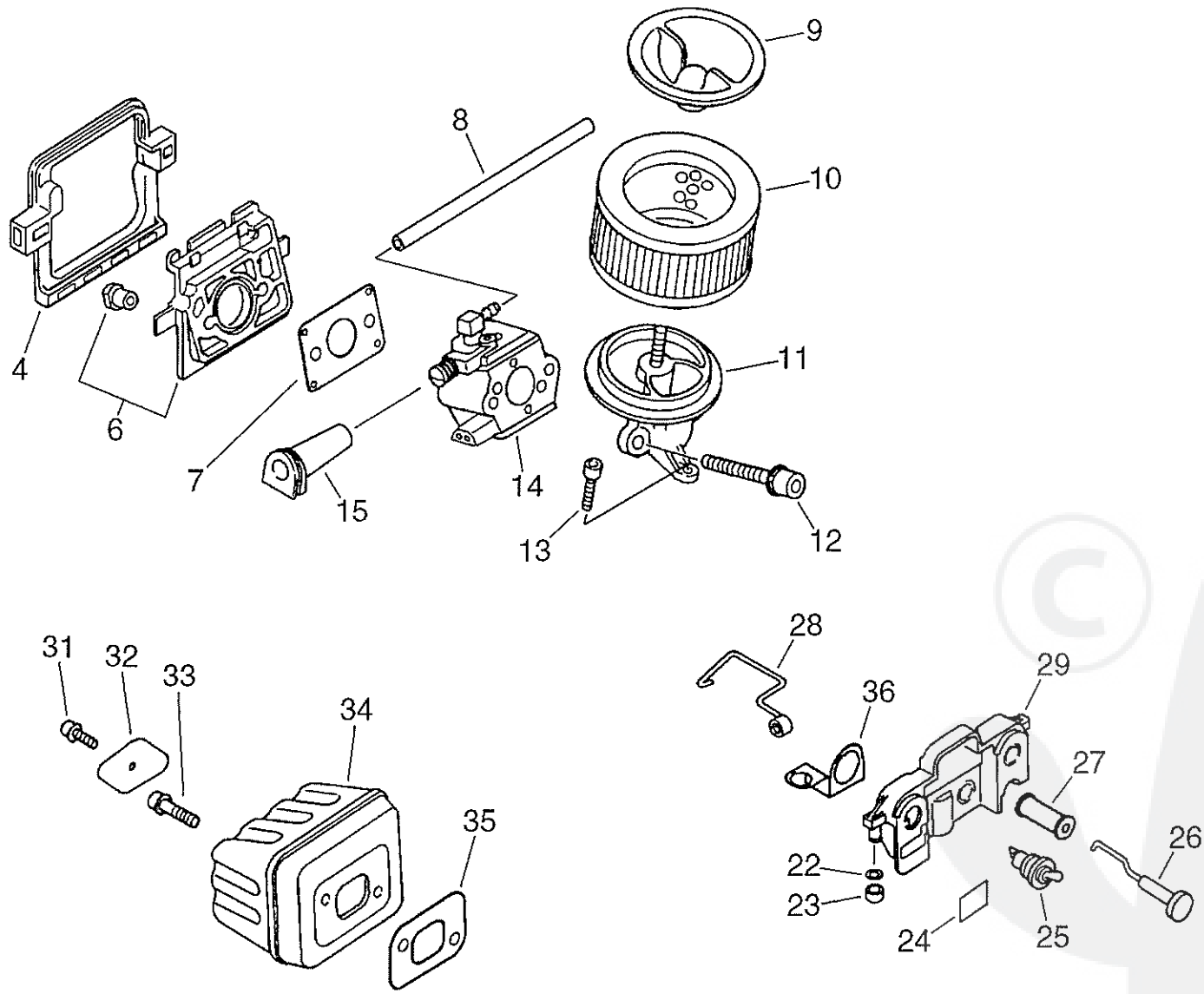


Parts List

Group:Chain Saws Model:CS-4200ES(36) Section:Air Cleaner, Muffler(Sr/Nr 36033993 and before)(3)

Key	Lv	Part Number	Q'ty	Description	Remarks	Note
31		900105-04006	1	BOLT, H.S. 4*6		
32		145711-60631	1	STAY, MUFFLER		
33		900105-05014	2	BOLT, H.S. 5*14		
34		145610-39930	1	MUFFLER		
35		145510-35431	1	GASKET, MUFFLER		
36		163413-59530	1	PLATE, CONTACT		

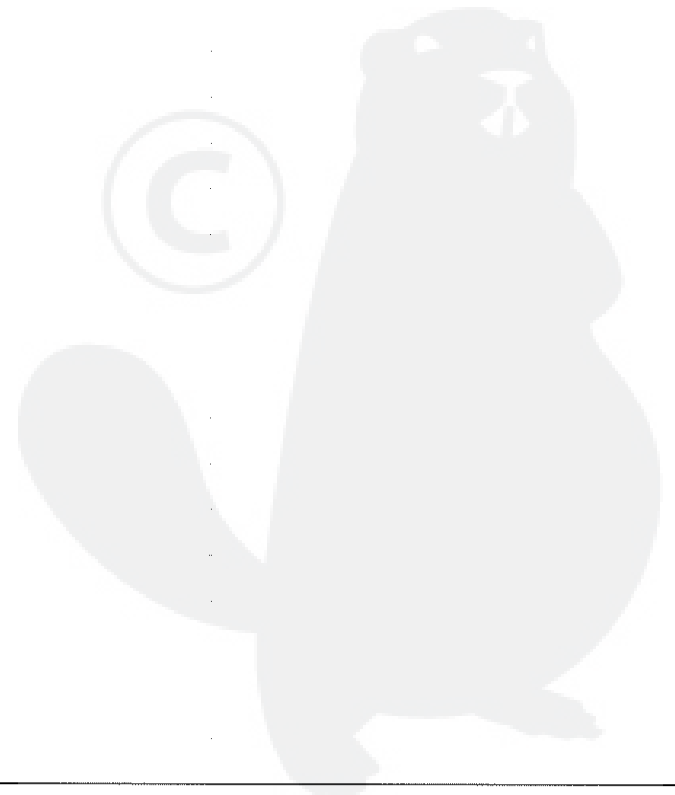


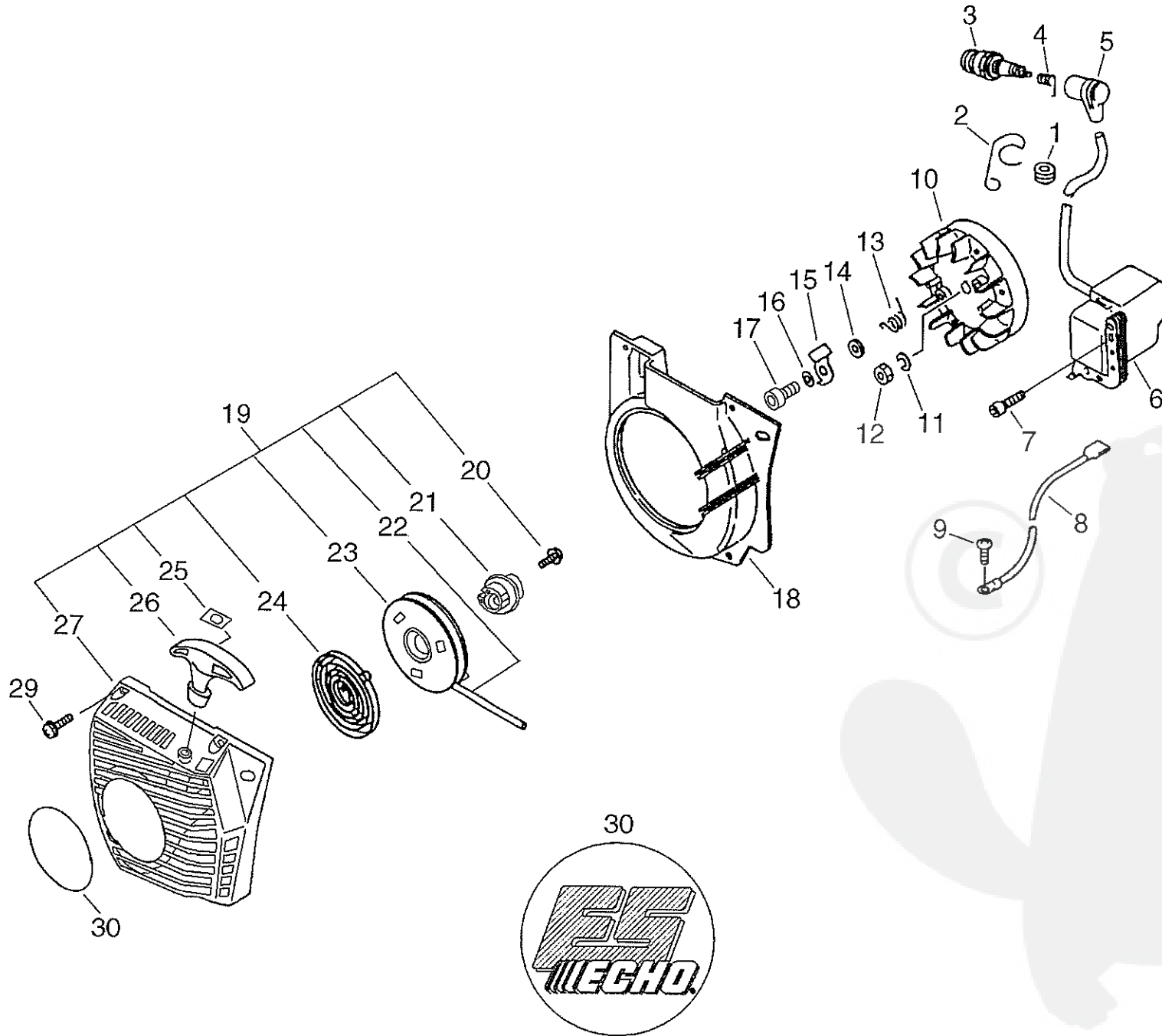


Parts List

Group:Chain Saws Model:CS-4200ES(36) Section:Air Cleaner, Muffler(Sr/Nr 36033994 and after) (4)

Key	Lv	Part Number	Q'ty	Description	Remarks	Note
4		130366-39930	1	CUSHION		
6		130007-39931	1	INSULATOR		
7		130010-38330	1	GASKET, INTAKE		
8		130110-54430	1	PIPE, IMPULSE		
9		130405-38332	1	BRACKET, AIR CLEANER		
10		130300-39730	1	CLEANER ASM., AIR		
11		130301-39935	1	ADAPTER, INTAKE		
12		900162-05050	2	BOLT, H.S. 5*50		
13		900253-05016	1	SCREW		
14		A021-000220	1	CARBURETOR, DIAPHRAGM		
15		129023-39930	1	GROMMET, IDLE		
22		900600-00005	2	WASHER 5		
23		351134-39930	2	CUSHION		
24		890157-39130	1	LABEL, SWITCH		
25		163400-35430	1	SWITCH, IGNITION		
26		A241-000100	1	KNOB, CHOKE		
27		178810-14534	1	GROMMET		
28		C454-000012	1	ROD, THROTTLE		
29		163810-59535	1	BRACKET, SWITCH		
31		900105-04006	1	BOLT, H.S. 4*6		
32		145711-60631	1	STAY, MUFFLER		
33		900105-05014	2	BOLT, H.S. 5*14		
34		145610-39930	1	MUFFLER		
35		145510-35431	1	GASKET, MUFFLER		
36		163413-59530	1	PLATE, CONTACT		

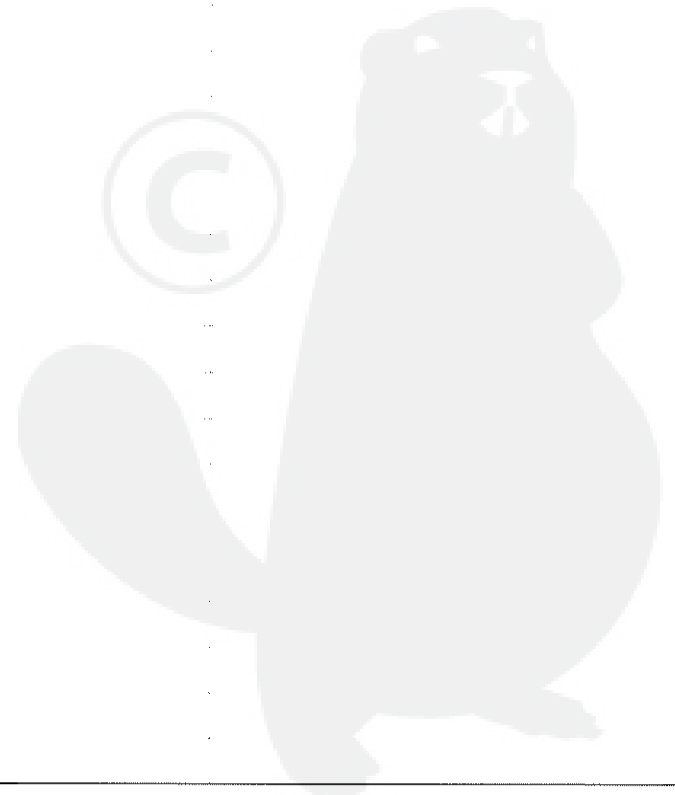




P a r t s L i s t

Group:Chain Saws Model:CS-4200ES(36) Section:Starter, Magneto(Sr/Nr 36033993 and before)(5)

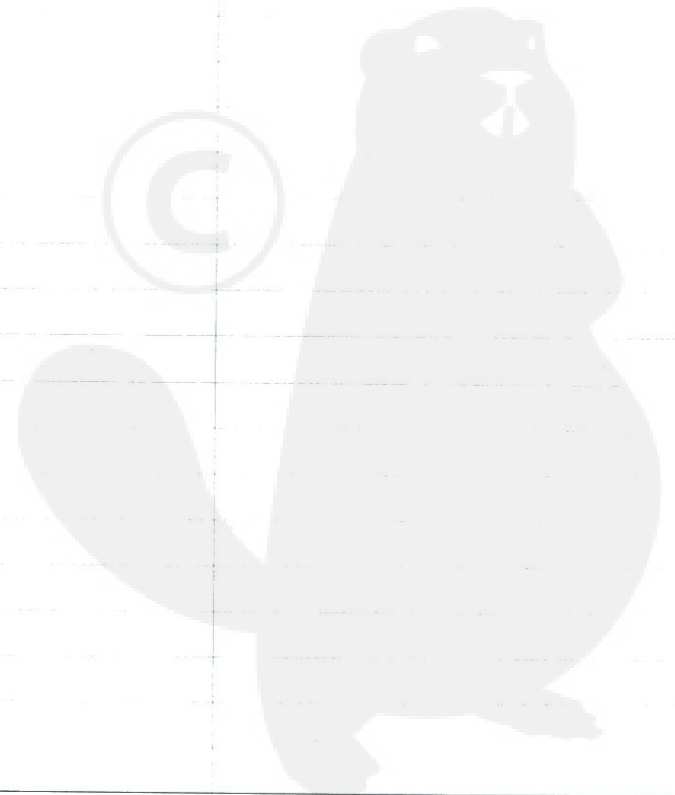
Key	Lv	Part Number	Q'ty	Description	Remarks	Note
1		151112-04630	1	BUSHING		
2		159118-39930	1	GUIDE, CORD		
3		159017-31730	1	PLUG, SPARK RCJ-6Y	Sus. by 159010-10230	
3		159010-10230	1	PLUG, SPARK (BPMR-7A		
4		A426-000010	1	TERMINAL, SPARKPLUG		
5		A427-000011	1	CAP, SPARK PLUG	Sus. by A427-000012	
5		A427-000012	1	CAP, SPARK PLUG		
6		156626-60630	1	COIL, IGNITION		
7		900162-05022	2	BOLT, H.S. 5*22		
8		156630-39930	1	LEAD, GROUND		
9		900216-04006	1	SCREW		
10		156801-60630	1	FLYWHEEL		
11		900605-00008	1	WASHER, SPRING 8		
12		900500-00008	1	NUT 8		
13		177234-35430	2	SPRING, RETURN		
14		177247-04630	2	SPACER, RATCHET		
15		177218-35430	2	PAWL, STARTER		
16		900603-00005	2	WASHER 5		
17		900105-05014	2	BOLT, H.S. 5*14	Sus. by V203-000090	
17		V203-000090	2	BOLT, 5		
18		101535-39932	1	COVER, FAN		
19		A051-000581	1	STARTER, RECOIL		
20	+	P022-004630	1	SCREW		
21	+	A507-000010	1	CATCHER, PAWL		
22	+	P022-006230	1	ROPE		
23	+	P022-006240	1	REEL COMP		
24	+	P022-006250	1	SPRING, SPIRAL		
25	+	177246-11120	1	CLIP, STARTER ROPE		

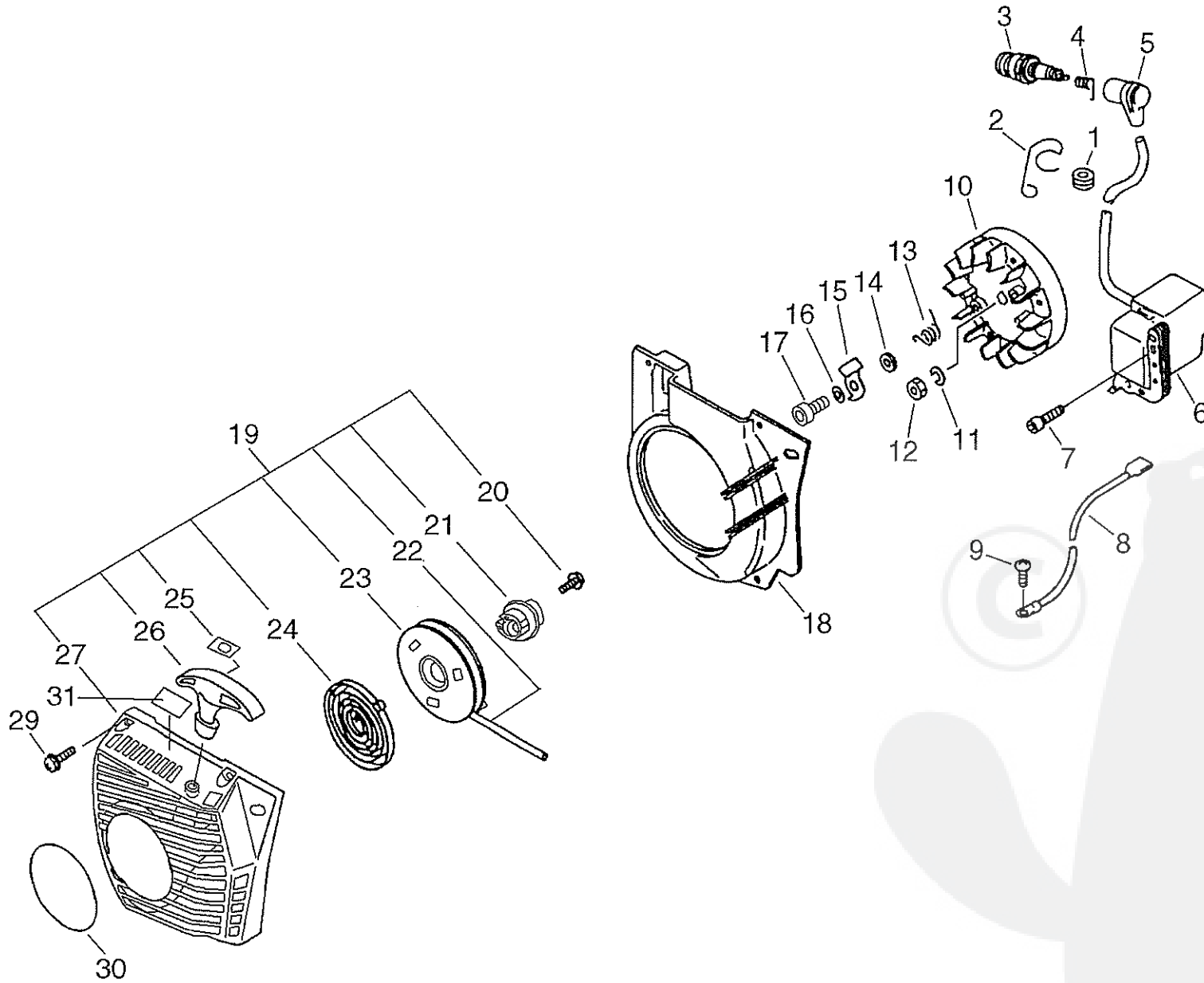


P a r t s L i s t

Group:Chain Saws Model:CS-4200ES(36) Section:Starter, Magneto(Sr/Nr 36033993 and before) (5)

Key	Lv	Part Number	Q'ty	Description	Remarks	Note
26	+	P022-001320	1	GRIP, STARTER		
27	+	A500-000151	1	CASE, STARTER		
29		900238-04016	4	SCREW 4*16		
30		X502-000120	1	LABEL, ECHO	Sus. by 890118-49330	
30		890118-49330	1	LABEL, ECHO		

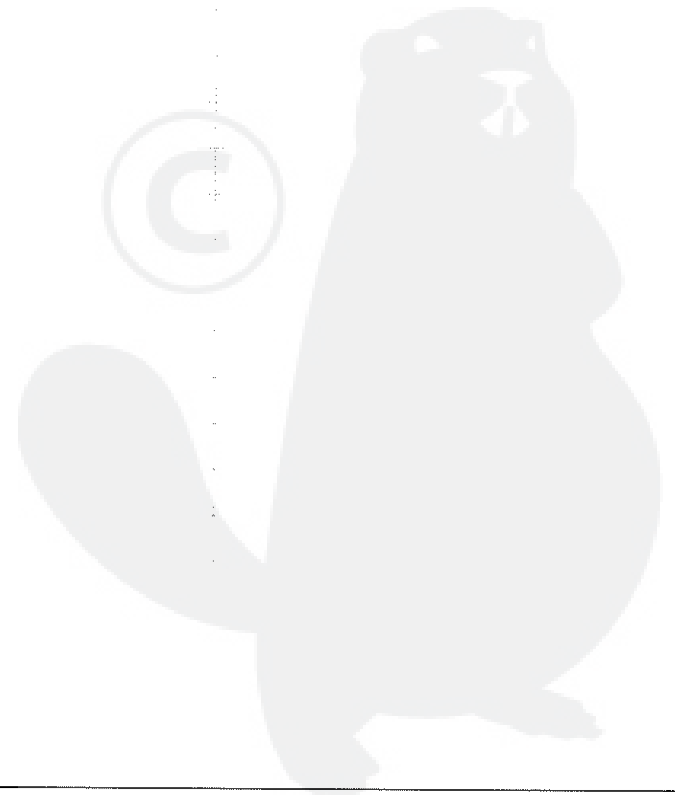




P a r t s L i s t

Group:Chain Saws Model:CS-4200ES(36) Section:Starter, Magneto(Sr/Nr 36033994 and after)(6)

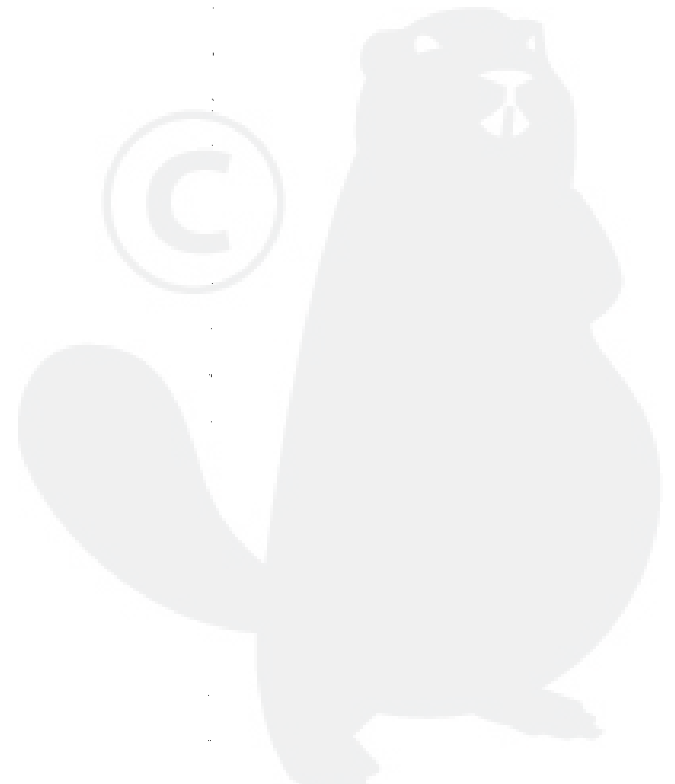
Key	Lv	Part Number	Q'ty	Description	Remarks	Note
1		151112-04630	1	BUSHING		
2		159118-39930	1	GUIDE, CORD		
3		159010-10230	1	PLUG, SPARK (BPMR-7A		
4		A426-000010	1	TERMINAL, SPARKPLUG		
5		A427-000012	1	CAP, SPARK PLUG		
6		156626-60630	1	COIL, IGNITION		
7		900162-05022	2	BOLT, H.S. 5*22		
8		156630-39930	1	LEAD, GROUND		
9		900216-04006	1	SCREW		
10		156801-60630	1	FLYWHEEL		
11		900605-00008	1	WASHER, SPRING 8		
12		900500-00008	1	NUT 8		
13		177234-35430	2	SPRING, RETURN		
14		177247-04630	2	SPACER, RATCHET		
15		177218-35430	2	PAWL, STARTER		
16		900603-00005	2	WASHER 5		
17		V203-000090	2	BOLT, 5		
18		101535-39933	1	COVER, FAN		
19		A051-000581	1	STARTER, RECOIL		
20 +		P022-004630	1	SCREW		
21 +		A507-000010	1	CATCHER, PAWL		
22 +		P022-006230	1	ROPE		
23 +		P022-006240	1	REEL COMP		
24 +		P022-006250	1	SPRING, SPIRAL		
25 +		177246-11120	1	CLIP, STARTER ROPE		
26 +		P022-001320	1	GRIP, STARTER		
27 +		A500-000151	1	CASE, STARTER		
29		900238-04016	4	SCREW 4*16		

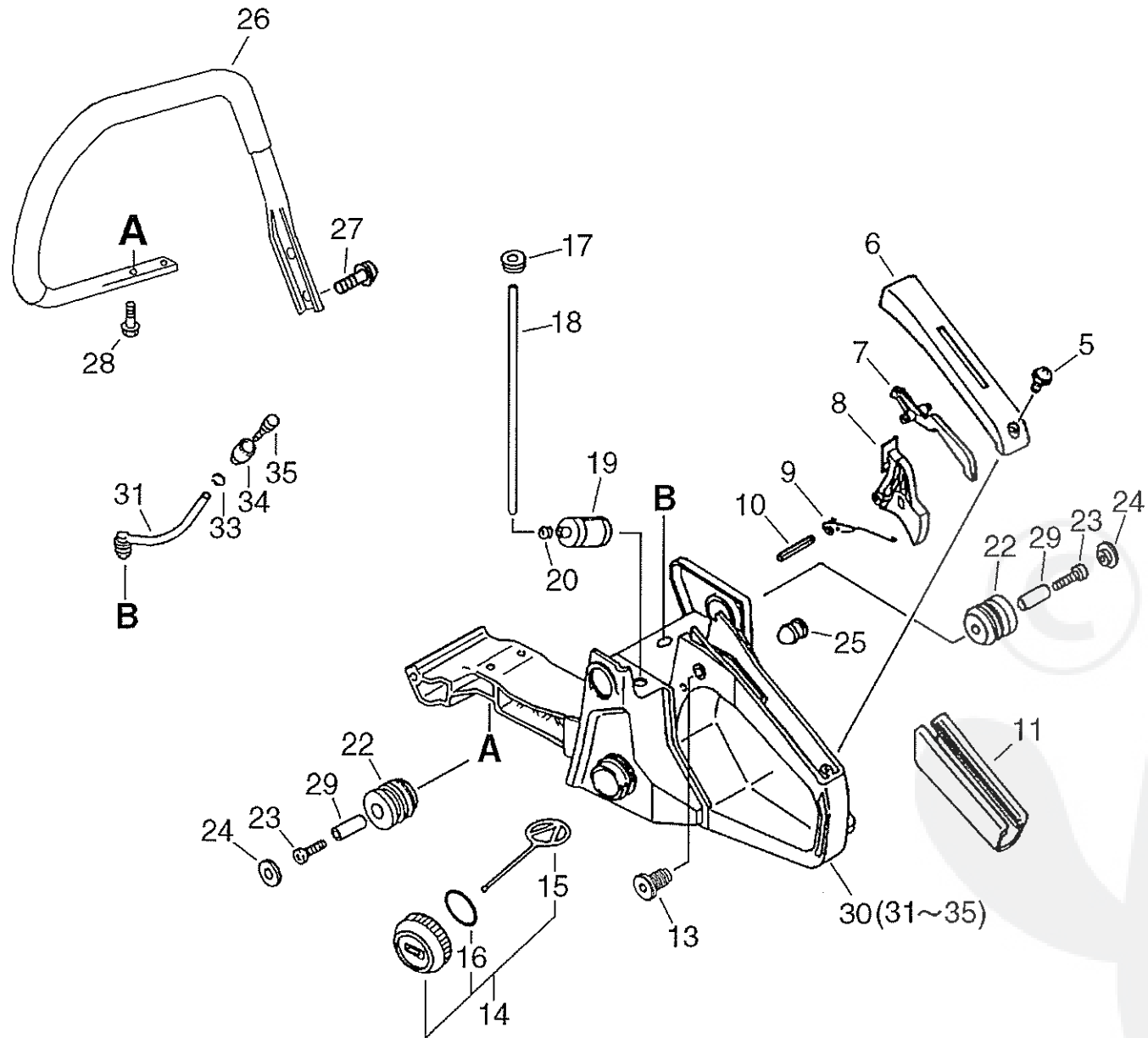


P a r t s L i s t

Group:Chain Saws Model:CS-4200ES(36) Section:Starter, Magneto(Sr/Nr 36033994 and after) (6)

Key	Lv	Part Number	Q'ty	Description	Remarks	Note
30		890118-49330	1	LABEL, ECHO		
31		X530-000210	1	LABEL,EYE CATCHER		

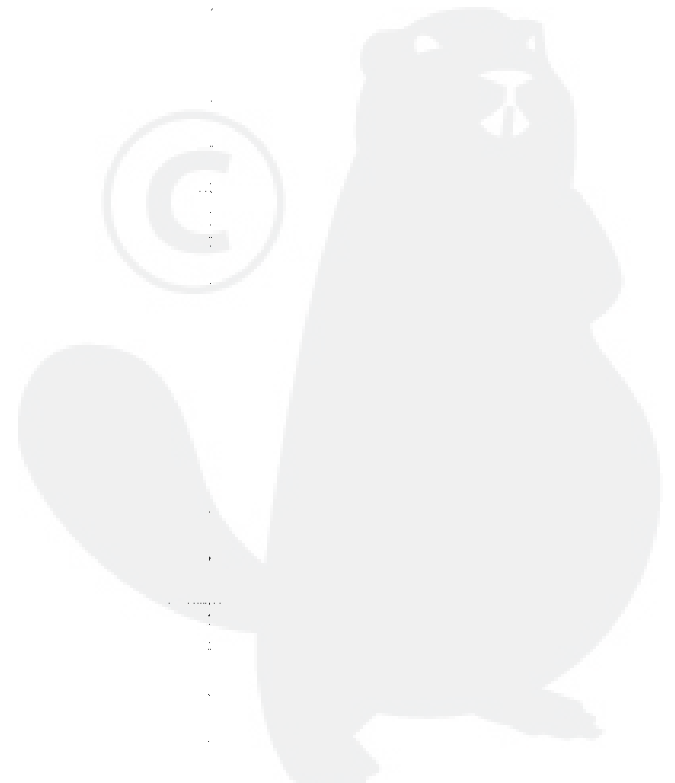




P a r t s L i s t

Group:Chain Saws Model:CS-4200ES(36) Section:Handle(Sr/Nr 36033993 and before)(7)

Key	Lv	Part Number	Q'ty	Description	Remarks	Note
5		900253-04014	1	SCREW 4*14		
6		351155-35430	1	COVER, HANDLE (BL)		
7		178090-37930	1	LOCKOUT, T. CONTROL		
8		C450-000000	1	TRIGGER, THROTTLE		
9		178043-35430	1	SPRING, THR.RETURN		
10		900345-40030	1	PIN, SPRING 4*30SUS		
11		351111-19830	1	GRIP, HANDLE		
13		V162-000040	1	PLUG		
14		131004-37932	1	CAP ASY, FUEL		
15 +		A365-000050	1	CONNECTOR, CAP		
16 +		900720-00022	1	O-RING 22		
17		132115-04920	1	GROMMET		
18		132010-00760	1	PIPE, FUEL		
19		131205-19830	1	STRAINER, FUEL		
20		132013-09820	1	CLIP		
22		100910-19730	2	CUSHION		
23		900105-04020	2	BOLT, H.S. 4*20		
24		100918-19830	2	CAP, CUSHION		
25		100252-39930	2	CUSHION		
26		C400-000190	1	HANDLE, FRONT		
27		91145-05020	2	BOLT HS TAPPING		
28		91145-05016	2	BOLT HS TAPPING		
29		100915-15131	2	SUPPORTER, CUSHION		
30		351103-39933	1	HANDLE, REAR	Sus. by 351103-39934	
30		351103-39934	1	HANDLE, REAR		
31 +		132012-39930	1	PIPE, W/GROMMET	Sus. by 132012-39931	
33 +		132013-26630	1	CLIP		
34 +		131328-40630	1	COVER, VENT		

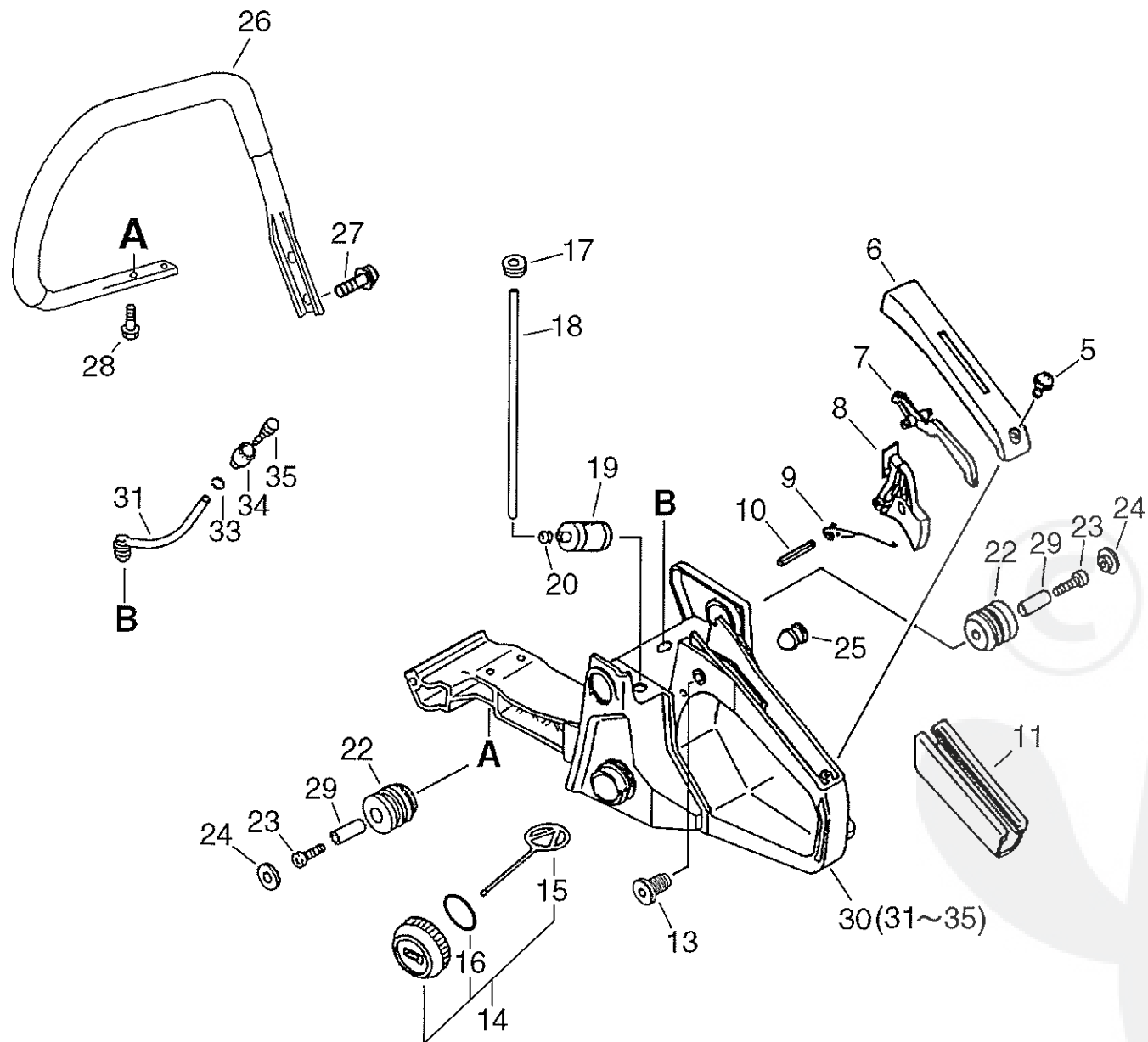


P a r t s L i s t

Group:Chain Saws Model:CS-4200ES(36) Section:Handle(Sr/Nr 36033993 and before)(7)

Key	Lv	Part Number	Q'ty	Description	Remarks	Note
35	+	131300-56430	1	VALVE, CHECK		

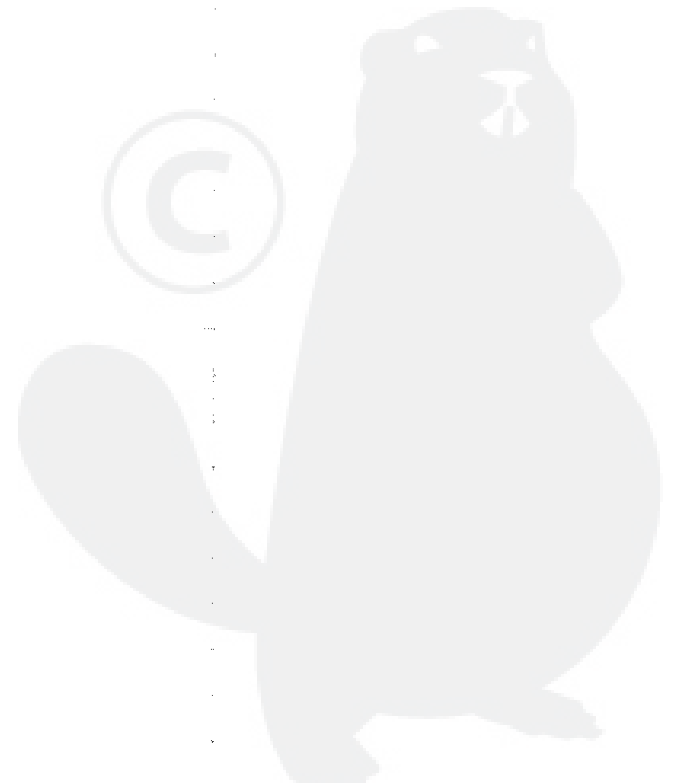




P a r t s L i s t

Group:Chain Saws Model:CS-4200ES(36) Section:Handle(Sr/Nr 36033994 and after)(8)

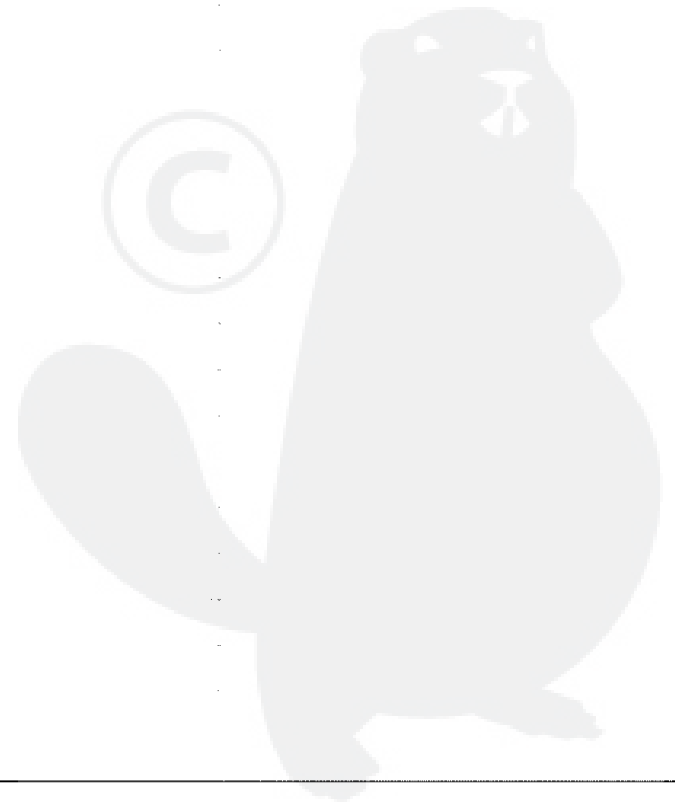
Key	Lv	Part Number	Q'ty	Description	Remarks	Note
5		900253-04014	1	SCREW 4*14		
6		351155-35430	1	COVER, HANDLE (BL)		
7		178090-37930	1	LOCKOUT, T. CONTROL		
8		C450-000000	1	TRIGGER, THROTTLE		
9		178043-35430	1	SPRING, THR.RETURN		
10		900345-40030	1	PIN, SPRING 4*30SUS		
11		351111-19830	1	GRIP, HANDLE		
13		V162-000040	1	PLUG		
14		131004-37932	1	CAP ASY, FUEL		
15 +		A365-000050	1	CONNECTOR, CAP		
16 +		900720-00022	1	O-RING 22		
17		132115-04920	1	GROMMET		
18		132010-00760	1	PIPE, FUEL		
19		131205-19830	1	STRAINER, FUEL		
20		132013-09820	1	CLIP		
22		100910-19730	2	CUSHION		
23		900105-04020	2	BOLT, H.S. 4*20		
24		100918-19830	2	CAP, CUSHION		
25		100252-39930	2	CUSHION		
26		C400-000190	1	HANDLE, FRONT		
27		91145-05020	2	BOLT HS TAPPING		
28		91145-05016	2	BOLT HS TAPPING		
29		100915-15131	2	SUPPORTER, CUSHION		
30		351103-39934	1	HANDLE, REAR	Sus. by P021-013410	
30		P021-013410	1	HANDLE, REAR		
31 +		132012-39930	1	PIPE, W/GROMMET	Sus. by 132012-39931	
31 +		132012-39931	1	PIPE		
33 +		132013-26630	1	CLIP		

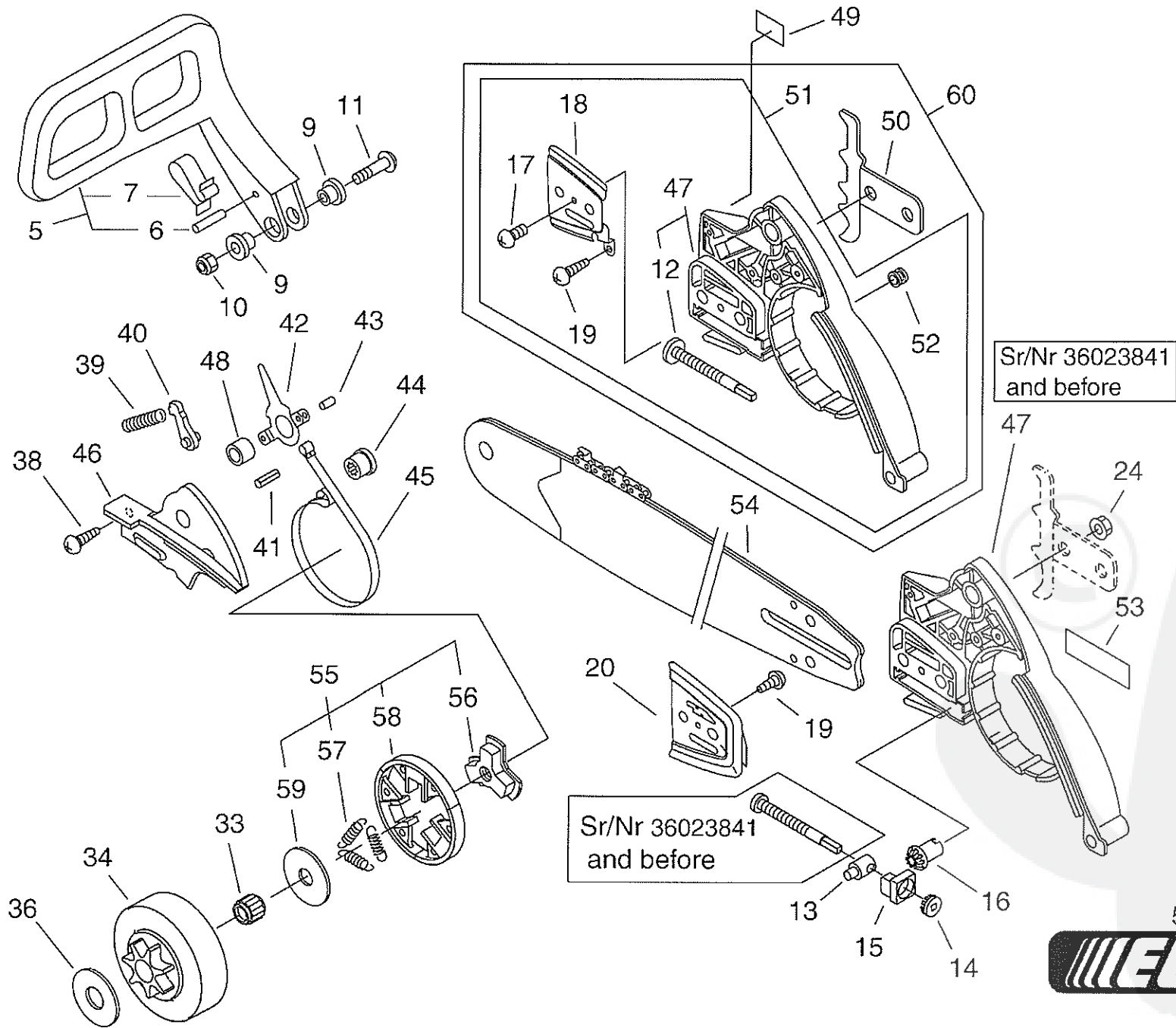


P a r t s L i s t

Group:Chain Saws Model:CS-4200ES(36) Section:Handle(Sr/Nr 36033994 and after)(8)

Key	Lv	Part Number	Q'ty	Description	Remarks	Note
34	+	131328-40630	1	COVER, VENT		
35	+	131300-56430	1	VALVE, CHECK		

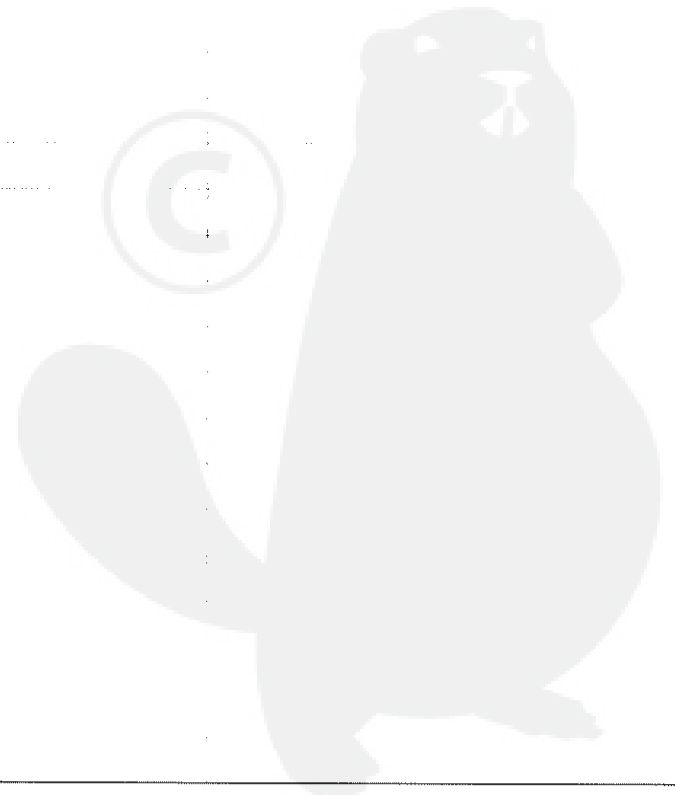




P a r t s L i s t

Group:Chain Saws Model:CS-4200ES(36) Section:Clutch, Sprocket(9)

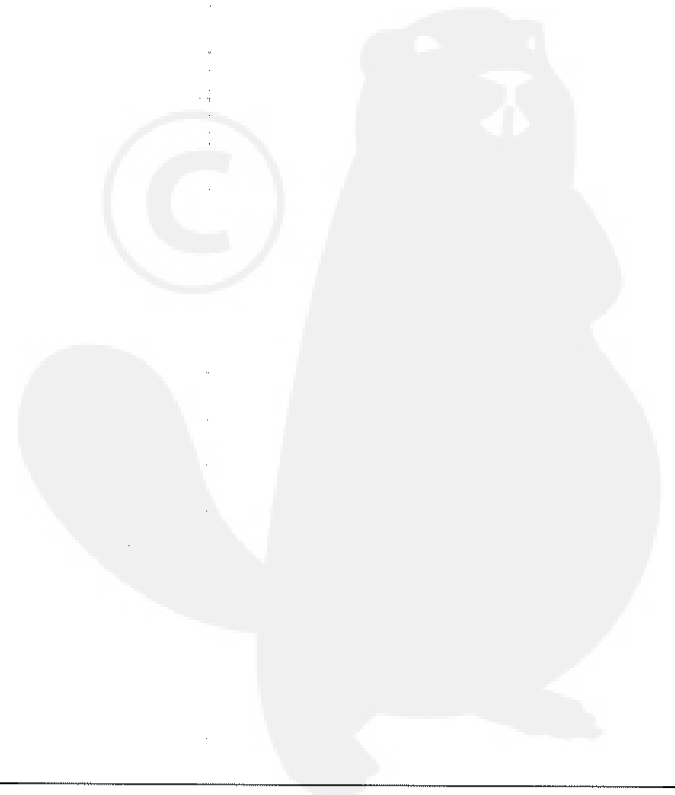
Key	Lv	Part Number	Q'ty	Description	Remarks	Note
5		433105-60030	1	LEVER, BRAKE		
6	+	900330-30240	1	PIN 3*24		
7	+	433114-38331	1	SPRING		
9		433167-39130	2	SPACER		
10		900560-00005	1	NUT, LOCK 5	Sus. by 900562-50005	
10		900562-50005	1	NUT, LOCK 5		
11		91318-05032	1	SCREW		
12		V203-000041	1	BOLT, 5	Sr/Nr 36023841 and before	
13		C309-000030	1	TENSIONER, CHAIN		
14		V651-000011	1	GEAR, BEVEL		
15		V355-000270	1	COLLAR, 8		
16		V651-000001	1	GEAR, BEVEL		
19		900253-04008	1	SCREW 4*8		
20		433012-39930	1	PLATE, GUIDE		
24		433019-12330	2	NUT, FLANGE 8		
33		175012-00831	1	BEARING, NEEDLE		
34		A556-000171	1	DRUM, CLUTCH		
36		175019-38330	1	PLATE, CLUTCH		
38		900253-04010	2	SCREW 4*10		
39		433122-35430	1	SPRING, BRAKE		
40		433209-35430	1	STOPPER, BRAKE		
41		900342-25012	1	PIN, SPRING 2.5*12		
42		433208-35431	1	LEVER, BRAKE		
43		900330-40088	1	ROLLER 4*8.8		
44		433142-35430	1	ADJUSTER, BRAKE		
45		C328-000060	1	BAND, BRAKE		
46		433310-38330	1	COVER, BRAKE		
48		433115-38330	1	WASHER 5.2*12*14		

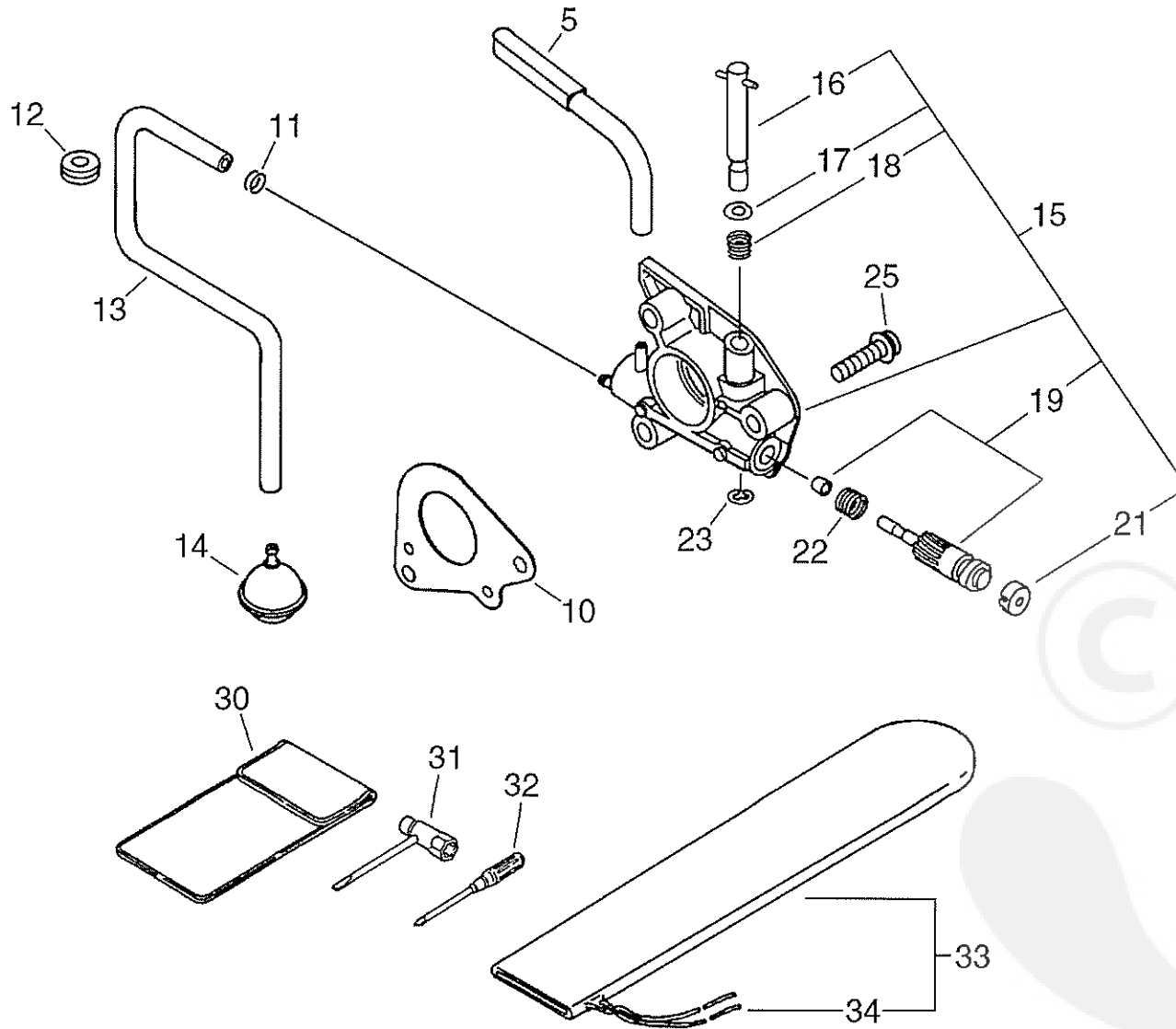


P a r t s L i s t

Group:Chain Saws Model:CS-4200ES(36) Section:Clutch, Sprocket(9)

Key	Lv	Part Number	Q'ty	Description	Remarks	Note
49		890316-39130	1	LABEL, CAUTION	Sr/Nr 36014810 and before	
50		880210-36031	1	BUMPER, SPIKED	Sr/Nr 36023841 and before	
60		P021-010290	1	GUARD, SPROCKET SET	Sr/Nr 36023842 and after	
51		P021-001312	1	GUARD, SPROCKET SET	Sr/Nr 36023841 and before	
51 +		P021-001313	1	GUARD, SPROCKET SET	Sr/Nr 36023842 and after	
17 +		900220-03006	1	SCREW 3*6	Can be used on the P021-001312 only	
17 ++		900220-03006	1	SCREW 3*6	Can be used on the P021-001313 only	
18 +		C305-000011	1	PLATE, SPROCKET GUARD	Can be used on the P021-001312 only	
18 ++		C305-000011	1	PLATE, SPROCKET GUARD	Can be used on the P021-001313 only	
19 +		900253-04008	1	SCREW 4*8	Can be used on the P021-001312 only	
19 ++		900253-04008	1	SCREW 4*8	Can be used on the P021-001313 only	
47 +		433005-60935	1	GUARD, SPROCKET	Sr/Nr 36023841 and before	
47 ++		P021-010170	1	GUARD, SPROCKET KIT	Sr/Nr 36023842 and after	
12 +++		V203-000110	1	BOLT, 5	Sr/Nr 36023842 and after	
52 +		V162-000020	1	PLUG	Can be used on the P021-001312 only	
52 ++		V162-000020	1	PLUG	Can be used on the P021-001313 only	
50 +		C304-000020	1	SPIKED	Can be used on the P021-001313 only	
53		X502-000020	1	LABEL, ECHO		
54		430521-37331	1	BAR, GUIDE 38RD58-325	Sus. by 430521-37332	
54		430521-37332	1	BAR, GUIDE 38RD58-325	OPTION	
55		P021-007060	1	CLUTCH ASY W/PLATE		
56 +		A552-000060	1	HUB, CLUTCH		
57 +		V451-000500	3	SPRING, TENSION		
58 +		P021-007050	1	CLUTCH SHOE SET		
59 +		175019-39430	1	PLATE, CLUTCH		

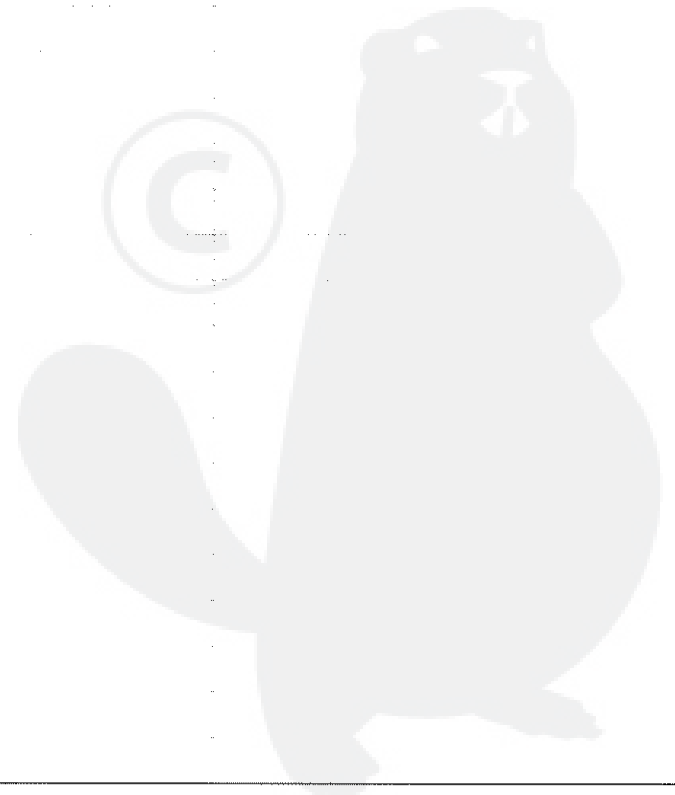


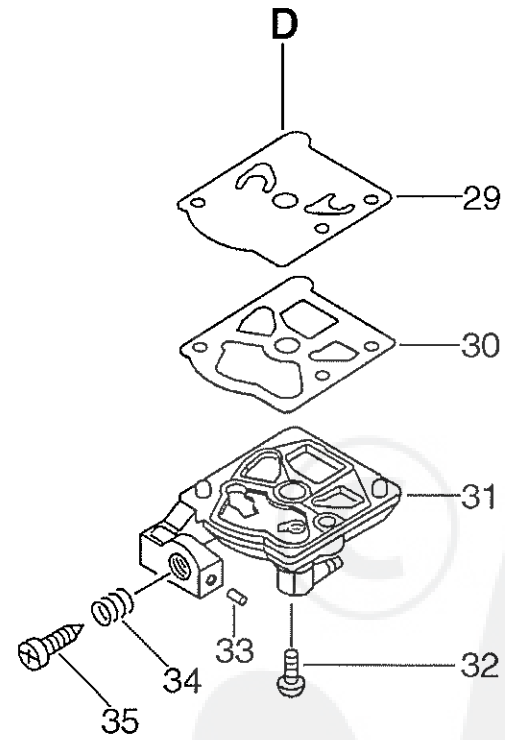
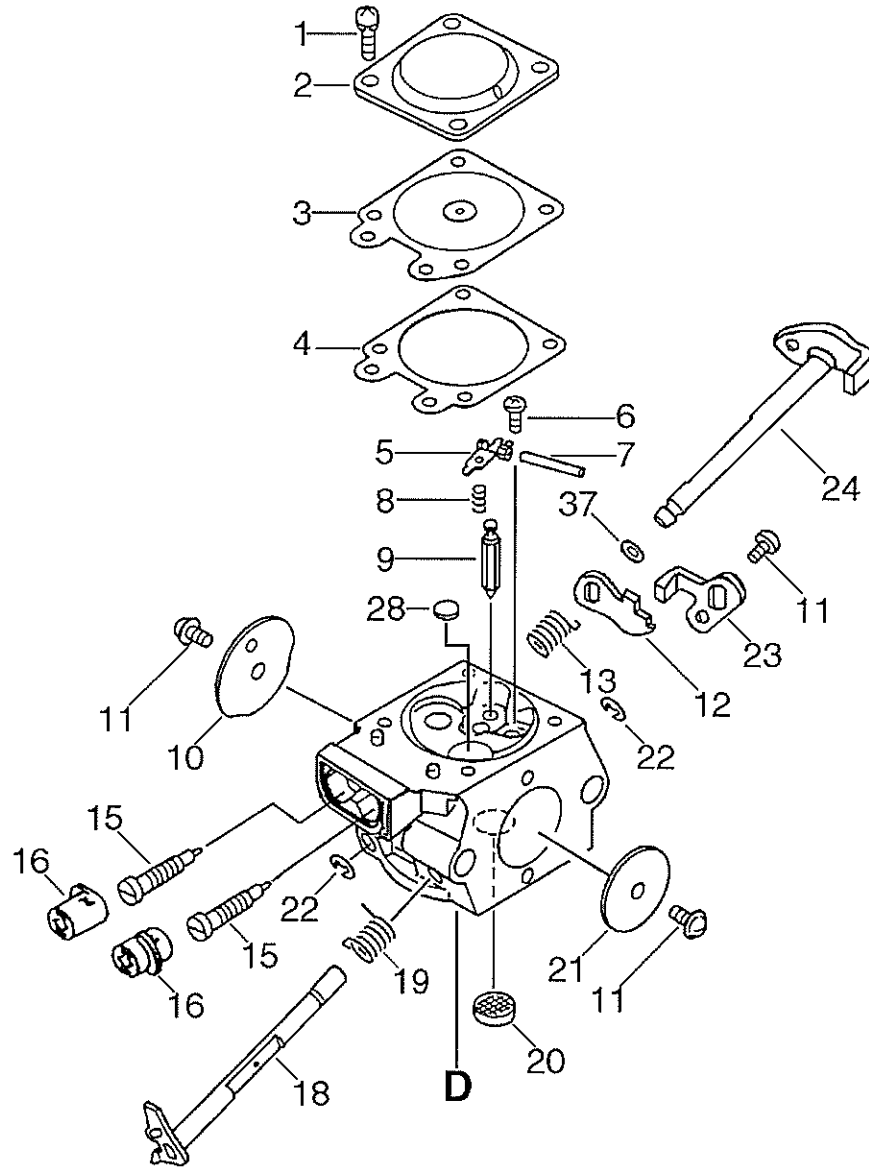


Parts List

Group:Chain Saws Model:CS-4200ES(36) Section:Auto-Oiler, Tools(10)

Key	Lv	Part Number	Q'ty	Description	Remarks	Note
5		437210-39931	1	PIPE		
10		175310-38330	1	PLATE, SEAL		
11		132013-26630	1	CLIP		
12		132115-12330	1	GROMMET		
13		437210-35430	1	PIPE		
14		436205-14730	1	STRAINER, OIL		
15		437002-38330	1	AUTO-OILER ASSY		
16 +		437016-38330	1	NEEDLE, ADJUST		
17 +		437029-37330	1	WASHER		
18 +		437015-37330	1	SPRING		
19 +		437024-37330	1	PLUNGER		
21 +		437062-38330	1	CAP, OIL PUMP		
22 +		437019-38330	1	SPRING		
23 +		123127-15030	1	RING		
25		900223-04016	2	SCREW		
30		898510-39130	1	BAG, TOOL		
31		895410-02830	1	WRENCH, W/S. DRIVER		
32		895812-03930	1	DRIVER, SCREW 50		
33		898513-38330	1	SCABBARD, GUIDE BAR	OPTION	
34 +		898568-14530	1	ROPE	OPTION	

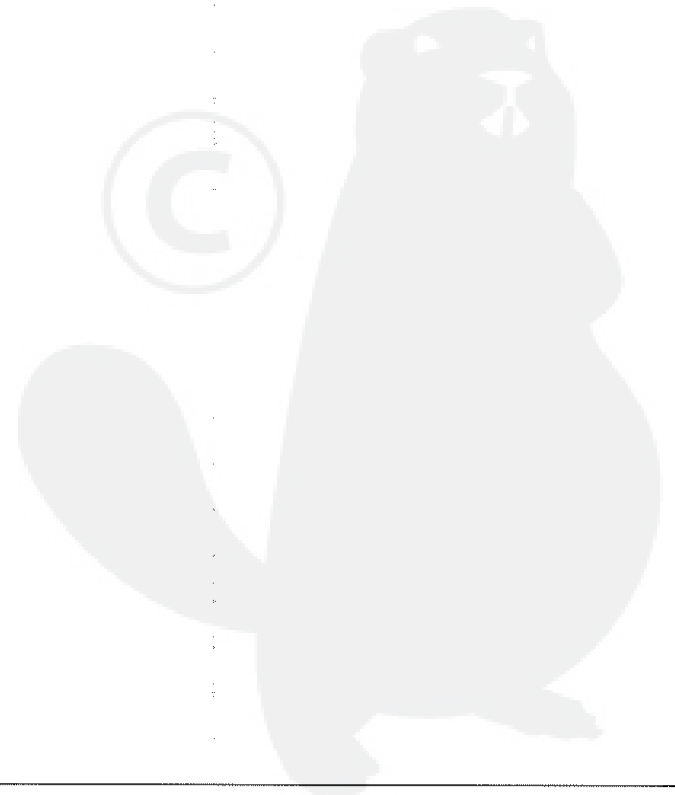




Parts List

Group:Chain Saws Model:CS-4200ES(36) Section:Carburetor(11)

Key	Lv	Part Number	Q'ty	Description	Remarks	Note
		A021-000220	1	CARBURETOR, DIAPHRAGM		
1 +		123130-02960	4	SCREW		
2 +		123142-03930	1	COVER, M. DIAPHRAGM		
3 +		123141-03930	1	DIAPHRAGM, METERING		
4 +		123140-03930	1	GASKET, M. DIAPHRAGM		
5 +		123123-03930	1	LEVER, METERING		
6 +		123139-03930	1	SCREW, M. LEVER PIN		
7 +		123138-03930	1	PIN, METERING LEVER		
8 +		123122-39330	1	SPRING, METER. LEVER		
9 +		123137-19830	1	VALVE, INLET NEEDLE		
10 +		P003-000230	1	VALVE CHOKE		
11 +		123114-38830	3	SCREW		
12 +		P003-000160	1	LEVER-FAST IDLE		
13 +		P003-000140	1	SPRING		
15 +		123120-03661	2	NEEDLE, HIGH SPEED		
16 +		P003-000010	2	LIMITER CAP		
18 +		P003-000480	1	SHAFT, THROTTLE		
19 +		123113-37530	1	SPRING, THROTTLE RTN		
20 +		123126-10631	1	SCREEN, INLET		
21 +		123116-10530	1	VALVE, THROTTLE		
22 +		123127-15030	2	RING		
23 +		P003-000130	1	THROTTLE, LEVER		
24 +		P003-000150	1	CHOKE, SHAFT		
28 +		123146-10631	1	PLUG, WELCH		
29 +		123112-15030	1	DIAPHRAGM, FUEL PUMP		
30 +		123125-15030	1	GASKET, FUEL PUMP		
31 +		123124-38330	1	COVER, FUEL PUMP		
32 +		123110-03930	1	SCREW, PUMP COVER		

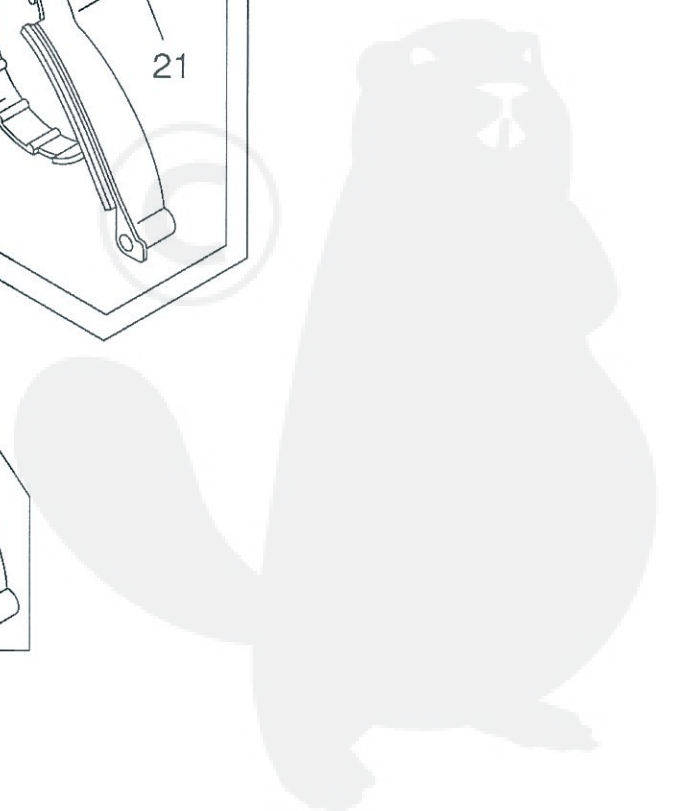
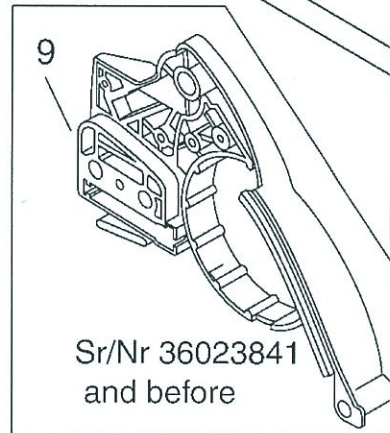
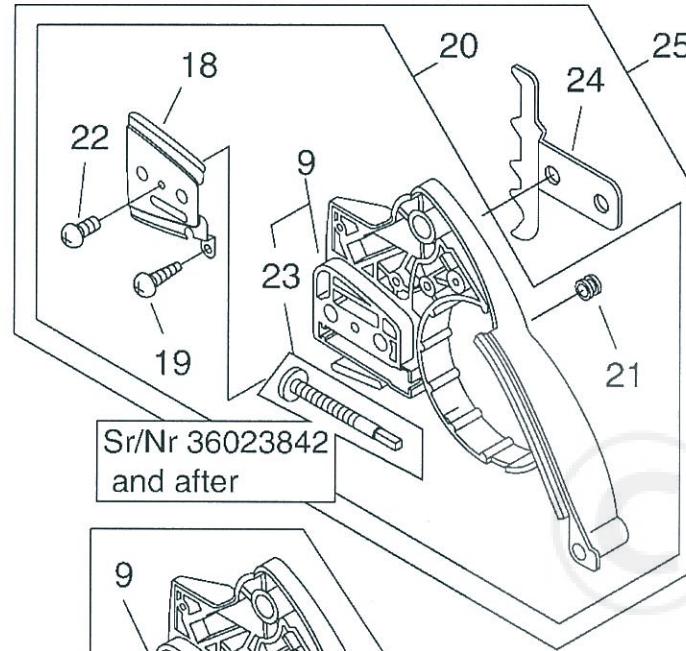
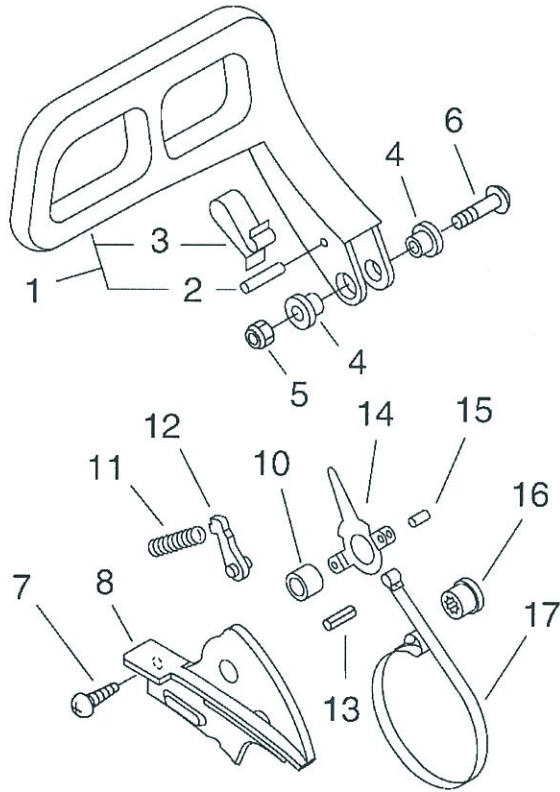


Parts List

Group:Chain Saws Model:CS-4200ES(36) Section:Carburetor(11)

Key	Lv	Part Number	Q'ty	Description	Remarks	Note
33	+	123178-15030	1	PLUG, FRICTION		
34	+	123133-04260	1	SPRING, IDLE ADJUST		
35	+	123134-04260	1	SCREW, IDLE ADJUST		
37	+	123149-26030	1	WASHER		

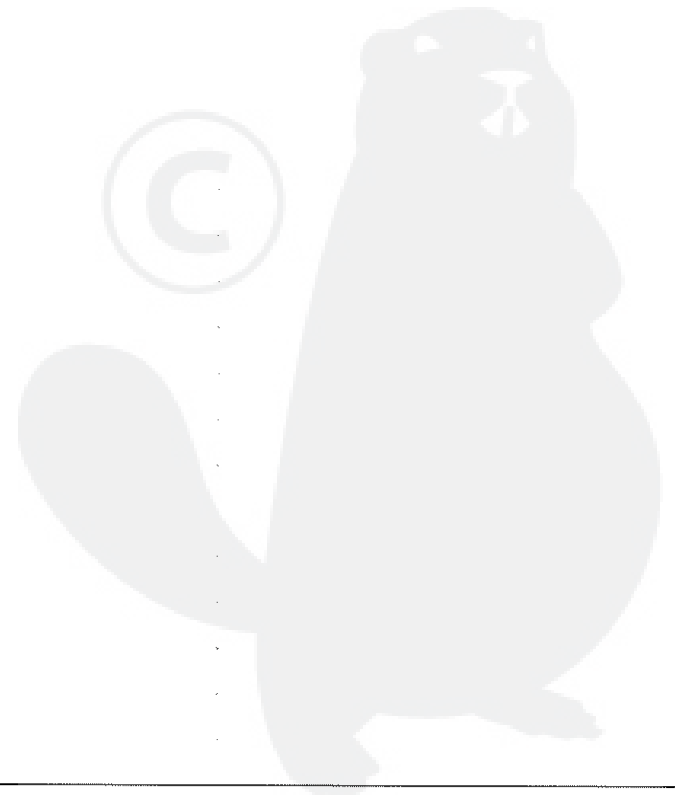




P a r t s L i s t

Group:Chain Saws Model:CS-4200ES(36) Section:Chain Brake Asy(12)

Key	Lv	Part Number	Q'ty	Description	Remarks	Note
		C032-000016	1	BRAKE,ASM CHAIN	Sus. by P021-010142	
		C032-000017	1	BRAKE,ASM CHAIN	Sus. by P021-010142	
		P021-010140	1	BRAKE,ASM CHAIN	Sus. by P021-010142	
		P021-010141	1	BRAKE,ASM CHAIN	Sus. by P021-010142	
		P021-010142	1	BRAKE,ASM CHAIN		
1	+	433105-60030	1	LEVER, BRAKE		
2	++	900330-30240	1	PIN 3*24		
3	++	433114-38331	1	SPRING		
4	+	433167-39130	2	SPACER		
5	+	900560-00005	1	NUT, LOCK 5	Sus. by 900562-50005	
5	+	900562-50005	1	NUT, LOCK 5		
6	+	91318-05032	1	SCREW		
7	+	900253-04010	2	SCREW 4*10		
8	+	433310-38330	1	COVER, BRAKE		
10	+	433115-38330	1	WASHER 5.2*12*14		
11	+	433122-35430	1	SPRING, BRAKE		
12	+	433209-35430	1	STOPPER, BRAKE		
13	+	900342-25012	1	PIN, SPRING 2.5*12		
14	+	433208-35431	1	LEVER, BRAKE		
15	+	900330-40088	1	ROLLER 4*8.8		
16	+	433142-35430	1	ADJUSTER, BRAKE		
17	+	C328-000060	1	BAND, BRAKE		
25	+	P021-010290	1	GUARD, SPROCKET SET	Sr/Nr 36023842 and after	
20	+	P021-001312	1	GUARD, SPROCKET SET	Sr/Nr 36023841 and before	
20	++	P021-001313	1	GUARD, SPROCKET SET	Sr/Nr 36023842 and after	
9	++	433005-60935	1	GUARD, SPROCKET	Sr/Nr 36023841 and before	
9	+++	P021-010170	1	GUARD, SPROCKET KIT	Sr/Nr 36023842 and after	
23	+++	W203-000110	1	BOLT, 5	Can be used on the P021-010170 only	



Parts List

Group:Chain Saws Model:CS-4200ES(36) Section:Chain Brake Asy(12)

Key	Lv	Part Number	Q'ty	Description	Remarks	Note
18	++	C305-000011	1	PLATE, SPROCKET GUARD	Can be used on the P021-001312 only	
18	+++	C305-000011	1	PLATE, SPROCKET GUARD	Can be used on the P021-001313 only	
19	++	900253-04008	1	SCREW 4*8	Can be used on the P021-001312 only	
19	+++	900253-04008	1	SCREW 4*8	Can be used on the P021-001313 only	
21	++	V162-000020	1	PLUG	Can be used on the P021-001312 only	
21	+++	V162-000020	1	PLUG	Can be used on the P021-001313 only	
22	++	900220-03006	1	SCREW 3*6	Can be used on the P021-001312 only	
22	+++	900220-03006	1	SCREW 3*6	Can be used on the P021-001313 only	
24	++	C304-000020	1	SPIKED	Can be used on the P021-001313 only	

