

P a r t s L i s t

Group:Chain Saws Model:CS-5100(30) Section:Cylinder, Crankcase, Piston(1)

Date:13/04/2010 Page: 1

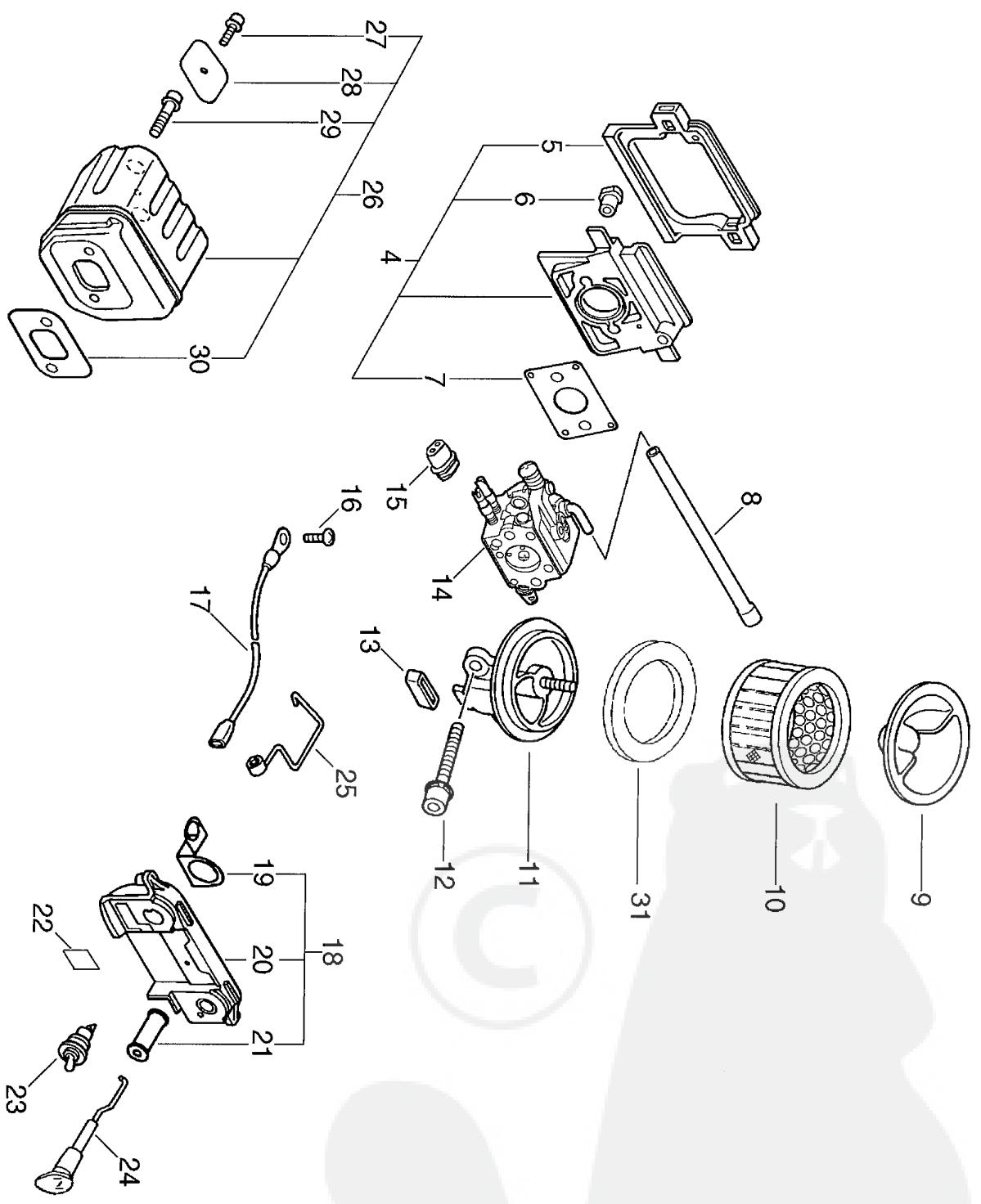
Key	Lv	Part Number	Q'ty	Description	Remarks	Note
1		900238-05012	2	SCREW 5*12		
2		130510-39932	1	ADAPTER, INTAKE		
3		130016-39930	1	GASKET, INTAKE		
4		P021-004080	1	CRANKCASE SET	Sus. by P021-004081	
5 +		900162-05022	4	BOLT, H.S. 5*22		
6 +		900106-05020	4	BOLT, H.S. 5*20		
7		P021-001062	1	PISTON KIT	Sus. by P021-001063	
7		P021-001063	1	PISTON KIT	Sus. by P021-001064	
8 +		100011-39730	2	RING, PISTON	Sus. by 100011-39731	
9 +		V609-000000	1	PIN, ENG 11		
10 +		100015-32330	2	CIRCLIP, PISTON PIN		
11 +		V308-000010	2	WASHER, CIRCULAR 11		
12 +		V556-000000	1	BEARING, NEEDLE 11		
14		P021-001071	1	CRANKSHAFT, ASSY		
15 +		900810-36202	2	BEARING, BALL 6202		
16 +		V508-000000	2	SEAL, OIL 15		
18 +		V652-000000	1	GEAR, WORM		
17		100142-30830	1	KEY, WOODRUFF		
19		A160-000102	1	COVER, CYLINDER		
20		A232-000022	1	LID, CLEANER	Sus. by A232-000023	
20		A232-000023	1	LID, CLEANER		
21		A235-000020	1	KNOB, CLEANER LID		
22		163890-38330	3	BOLT, 5		
24		130338-32430	1	PLUG, COVER		
25		101520-35430	1	COVER		
26		900238-05016	3	SCREW 5*16		
27		433000-19831	1	CATCHER KIT, CHAIN		
28 +		900220-05018	1	SCREW 5*18		

P a r t s L i s t

Group:Chain Saws Model:CS-5100(30) Section:Cylinder, Crankcase, Piston(1)

Date:13/04/2010 Page: 2

Key	lv	Part Number	Q'ty	Description	Remarks	Note
29		101578-38431	1	PIUG		
30		100918-38330	2	CAP, CUSHION		
31		100915-33930	2	SCREW		
32		100921-38330	2	CUSHION		
33		P021-003110	1	COVER, ENGINE		
23 +		100215-03930	2	PIN, DOWEL		
34 +		436018-38330	2	PIN, DOWEL		
35 +		433011-19830	2	STUD, GUIDE BAR		
37		P021-012550	1	TANK, OIL		
34 +		436018-38330	1	PIN, DOWEL		
36 +		436019-38330	1	GASKET, OIL TANK		
38 +		900162-04016	3	BOLT, H.S. 4*16		
39 +		436114-13930	1	VALVE, CHECK		
40		V135-000010	1	GROMMET, HT CORD		
41		X503-008190	1	LABEL, MODEL		
42		X505-000000	1	LABEL, CAUTION		
43		X505-000180	1	LABEL, CAUTION		
44		890345-39230	1	LABEL, CAUTION		
45		436001-39232	1	CAP, OIL		
46 +		900721-00025	1	O-RING 25		
47 +		A365-000050	1	CONNECTOR, CAP		
48		433045-38332	1	COVER		
53		101100-21360	1	RELEASE ASSY, COMP.		
54 +		101113-37530	1	SPRING		
55 +		101119-37530	1	CLIP		
56 +		159025-37530	1	GASKET		
57		V150-001740	2	PLATE, EYE		



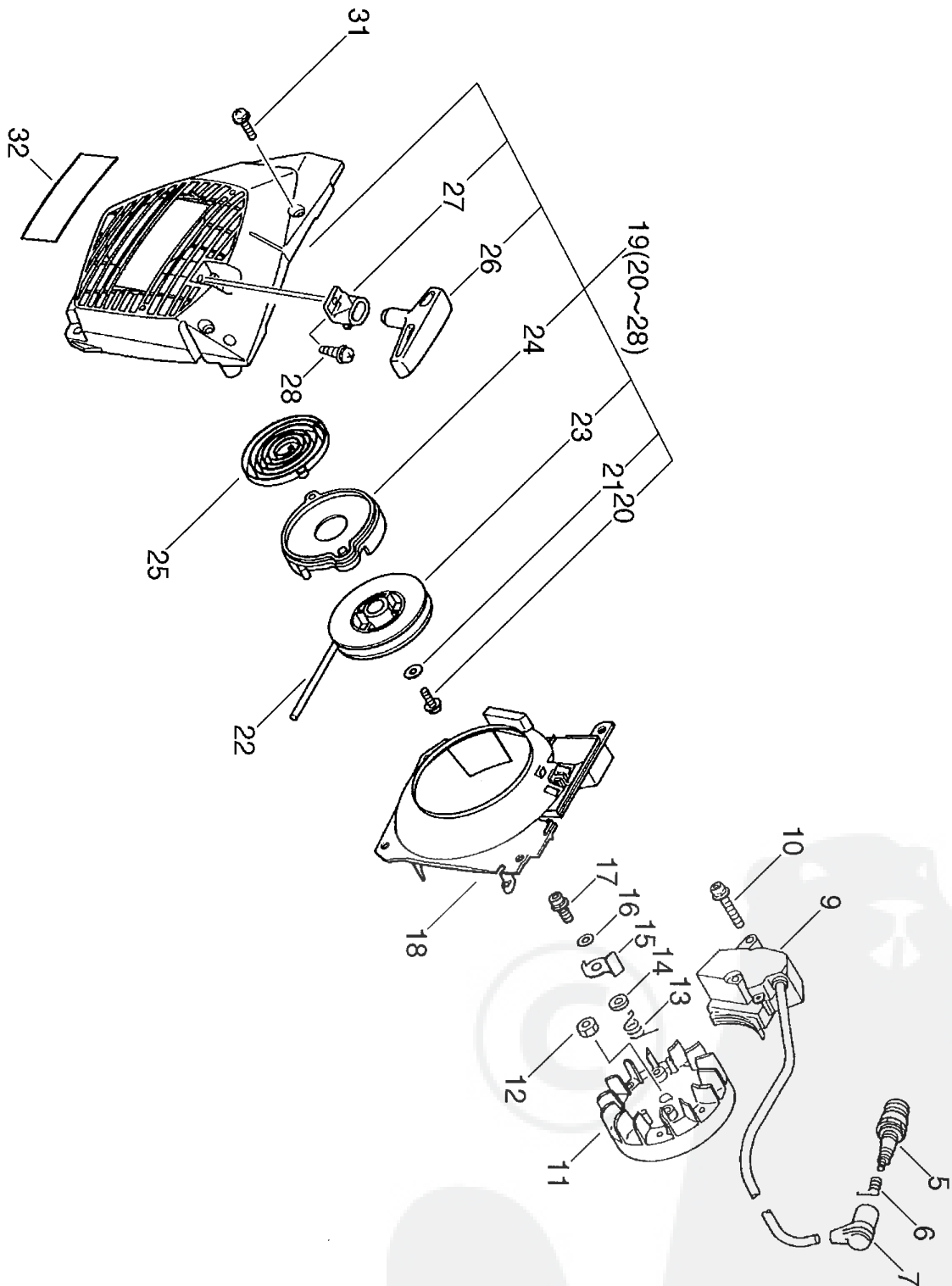
P a r t s L i s t

Group:Chain Saws Model:CS-5100(30) Section:Air Cleaner, Carburetor, Muffler(2)

Date:13/04/2010 Page: 1

Key	Lv	Part Number	Q'ty	Description	Remarks	Note
4		130000-38331	1	INSULATOR ASY, INTAKE		
5 +		V420-001130	1	CUSHION		
6 +		130020-33330	2	NUT		
7 +		130010-38330	1	GASKET, INTAKE		
8		130110-38330	1	PIPE, IMPULSE		
9		130405-38332	1	BRACKET, AIR CLEANER		
10		A226-000040	1	ELEMENT, AIR FILTER		
31		V540-000110	1	SEAL, CIRCULAR		
11		A204-000004	1	ELBOW, CARBURETOR		
12		900162-05050	2	BOLT, H.S. 5*50		
13		130430-38330	1	CUSHION		
14		A021-000561	1	CARBURETOR, DIAPHRAGM		
15		129010-33330	1	GROMMET		
16		900220-04006	1	SCREW 4*6		
17		162010-38332	1	LEAD, GROUND		
18		163804-38935	1	BRACKET, SWITCH		
19 +		163413-38930	1	PLATE, SWITCH		
20 +		163810-38933	1	BRACKET, SWITCH		
21 +		178810-14534	1	GROMMET		
22		890157-39130	1	LABEL, SWITCH		
23		163400-38330	1	SWITCH, IGNITION		
24		A241-000100	1	KNOB, CHOKE		
25		C454-000041	1	ROD, THROTTLE		
26		P021-008610	1	MUFFLER ASY		
27 +		900105-04006	1	BOLT, H.S. 4*6		
28 +		145711-60631	1	STAY, MUFFLER		
29 +		900105-05014	2	BOLT, H.S. 5*14		
30 +		145510-35431	1	GASKET, MUFFLER		

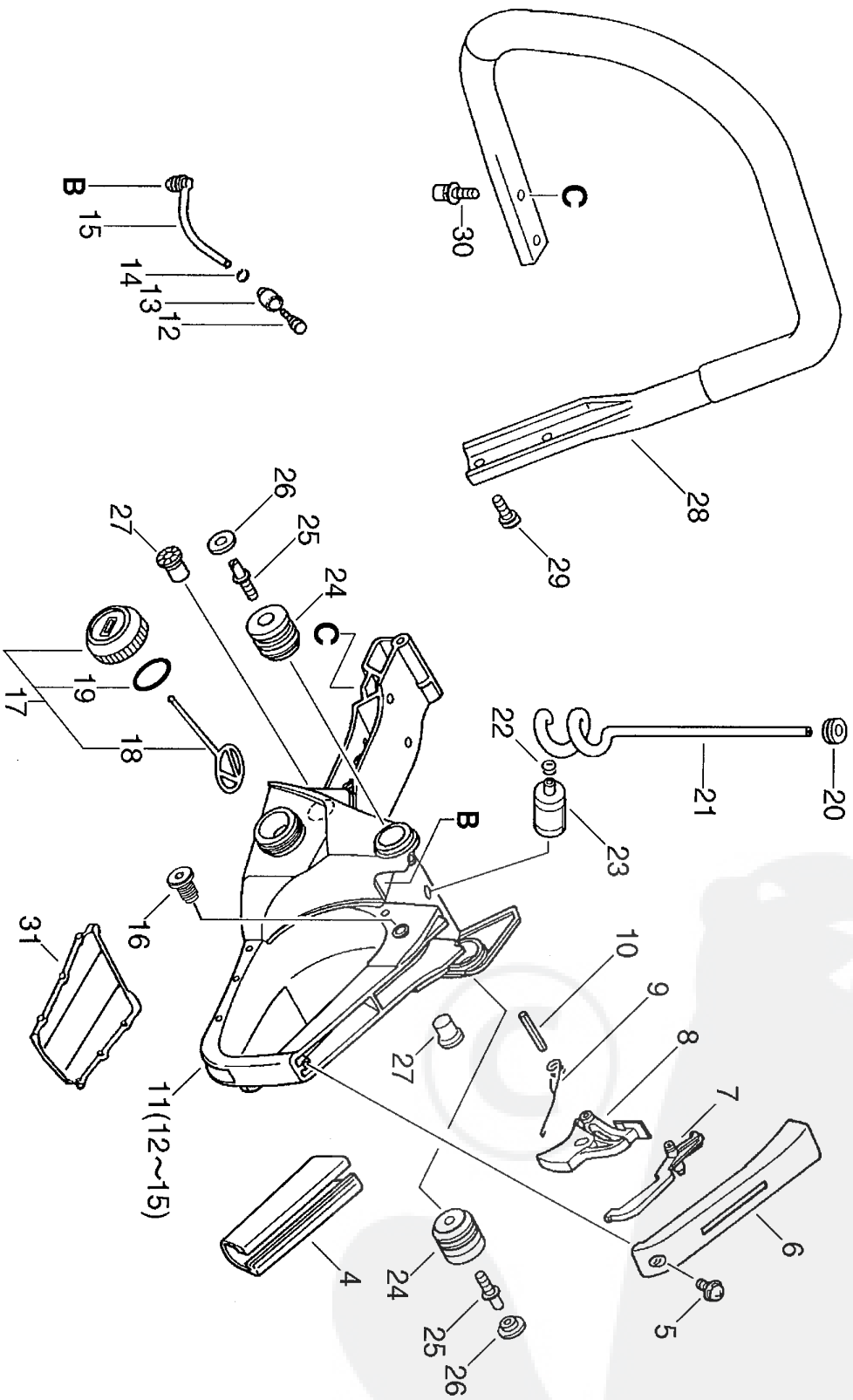
Sus. by A241-000101



P a r t s L i s t

Group:Chain Saws Model:CS-5100(30) Section:Starter, Magneto (3)

Key	lv	Part Number	Q'ty	Description	Remarks	Note
5		159010-10230	1	PLUG, SPARK (BPMR-7A		
6		A426-000010	1	TERMINAL, SPARKPLUG		
7		A427-000012	1	CAP SPARK PLUG	Sus. by A427-000013	
9		A411-000031	1	COIL, IGNITION		
10		900162-04030	2	BOLT, H.S. 4*30		
11		A409-000030	1	ROTOR, MAGNETO		
12		900515-00008	1	NUT, FLANGE 8		
13		177234-35430	2	SPRING, RETURN		
14		177247-04630	2	SPACER, RATCHET		
15		177218-19830	2	PAWL, STARTER		
16		900603-00005	2	WASHER 5		
17		V203-000090	2	BOLT, 5		
18		A172-000062	1	COVER, FAN		
19		177200-38335	1	STARTER ASY		
20	+	900238-05012	1	SCREW 5*12		
21	+	177214-02830	1	WASHER		
22	+	177226-38330	1	ROPE, STARTER		
23	+	177215-38330	1	DRUM, STARTER		
24	+	177221-38330	1	PLATE, STARTER		
25	+	177220-35430	1	SPRING, REMIND		
26	+	177228-35430	1	GRIP, STARTER (BL)		
27	+	177227-37930	1	GUIDE, ROPE		
28	+	900296-03014	1	SCREW 3*14		
31		900238-05018	4	SCREW 5*18		
32		X502-000010	1	LABELL, ECHO		



P a r t s L i s t

Group:Chain Saws Model:CS-5100(30) Section:Handle (4)

Date:13/04/2010 Page: 1

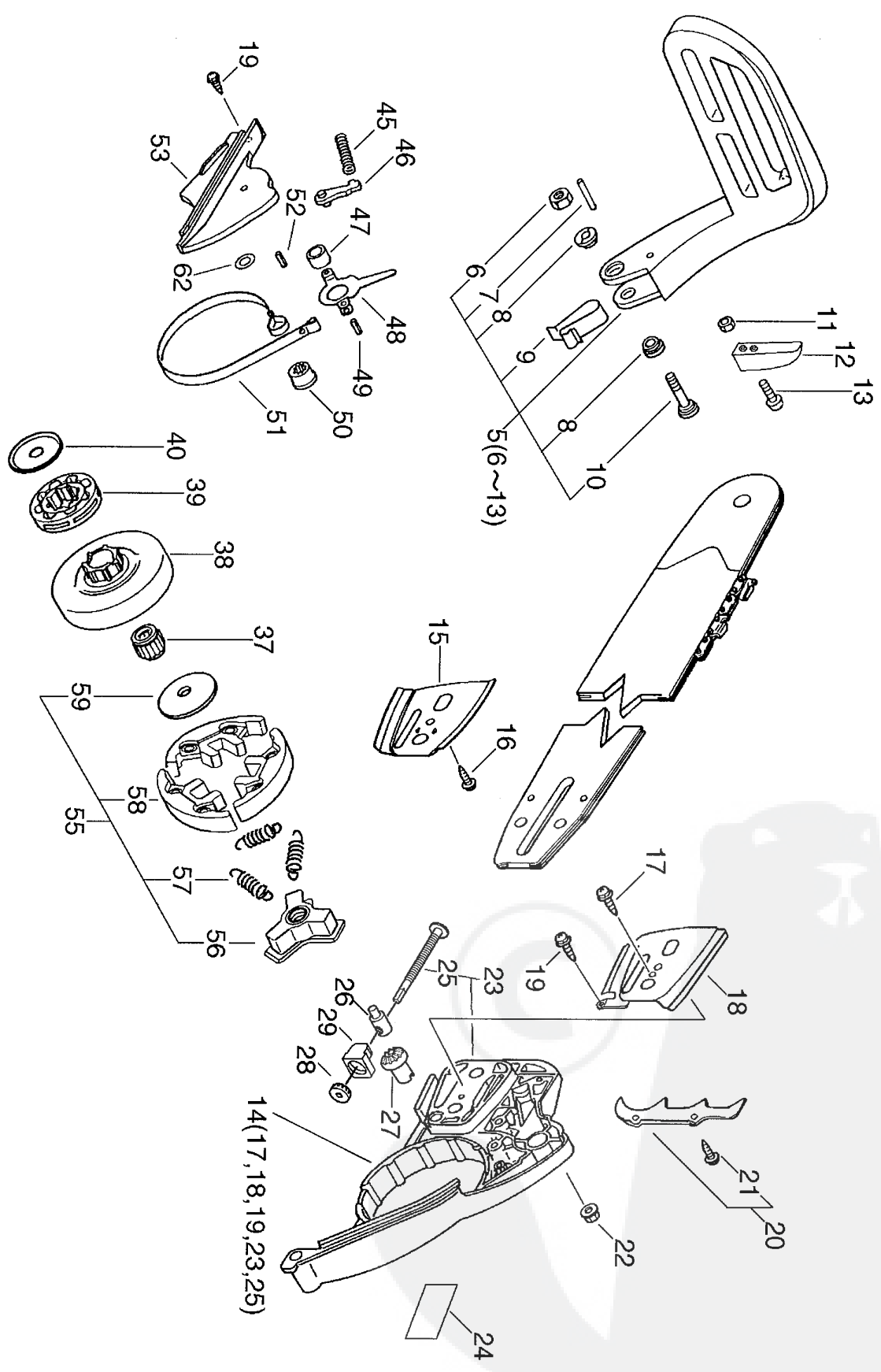
Key	Lv Part Number	Q'ty	Description	Remarks	Note
4	351111-19830	1	GRIP, HANDLE		
5	900253-04014	1	SCREW 4*14		
6	351155-35430	1	COVER, HANDLE (BL)		
7	178090-37930	1	LOCKOUT, T. CONTROL		
8	C450-000000	1	TRIGGER, THROTTLE		
9	178043-35430	1	SPRING, THR.RETURN	Sus. by V452-000260	
10	900345-40030	1	PIN, SPRING 4*30SUS		
11	P021-011470	1	HANDLE ASY, REAR	Sus. by P021-011471	
11	P021-011471	1	HANDLE ASY, REAR	Sus. by P021-011472	
12 +	131300-56430	1	VALVE, CHECK		
13 +	131328-40630	1	COVER, VENT		
14 +	132013-26630	1	CLIP		
15 +	132012-39330	1	PIPE, W/GROMMET	Sus. by 132012-39331	
15 +	132012-39331	1	PIPE		
16	V162-000040	1	PLUG		
17	131004-37932	1	CAP ASY, FUEL		
18 +	A365-000050	1	CONNECTOR, CAP		
19 +	900720-00022	1	O-RING 22		
20	132115-04920	1	GROMMET		
21	132010-38331	1	PIPE		
22	132013-26630	1	CLIP		
23	131205-19830	1	STRAINER, FUEL	Sus. by 131205-19831	
24	100921-38330	2	CUSHION		
25	100915-32530	2	BOLT		
26	100918-38330	2	CAP, CUSHION		
27	100910-38330	2	CUSHION		
28	C400-000010	1	HANDLE, FRONT		
29	91145-05020	2	BOLT HS TAPPING		

P a r t s L i s t

Group:Chain Saws Model:CS-5100(30) Section:Handle(4)

Date:13/04/2010 Page: 2

Key	lv	Part Number	Q'ty	Description	Remarks	Note
30		91145-05016	2	BOLT HS TAPPING		
31		351155-38430	1	COVER, HANDLE		



P a r t s L i s t

Group:Chain Saws Model:CS-5100(30) Section:Clutch, Sprocket (5)

Date:13/04/2010 Page: 1

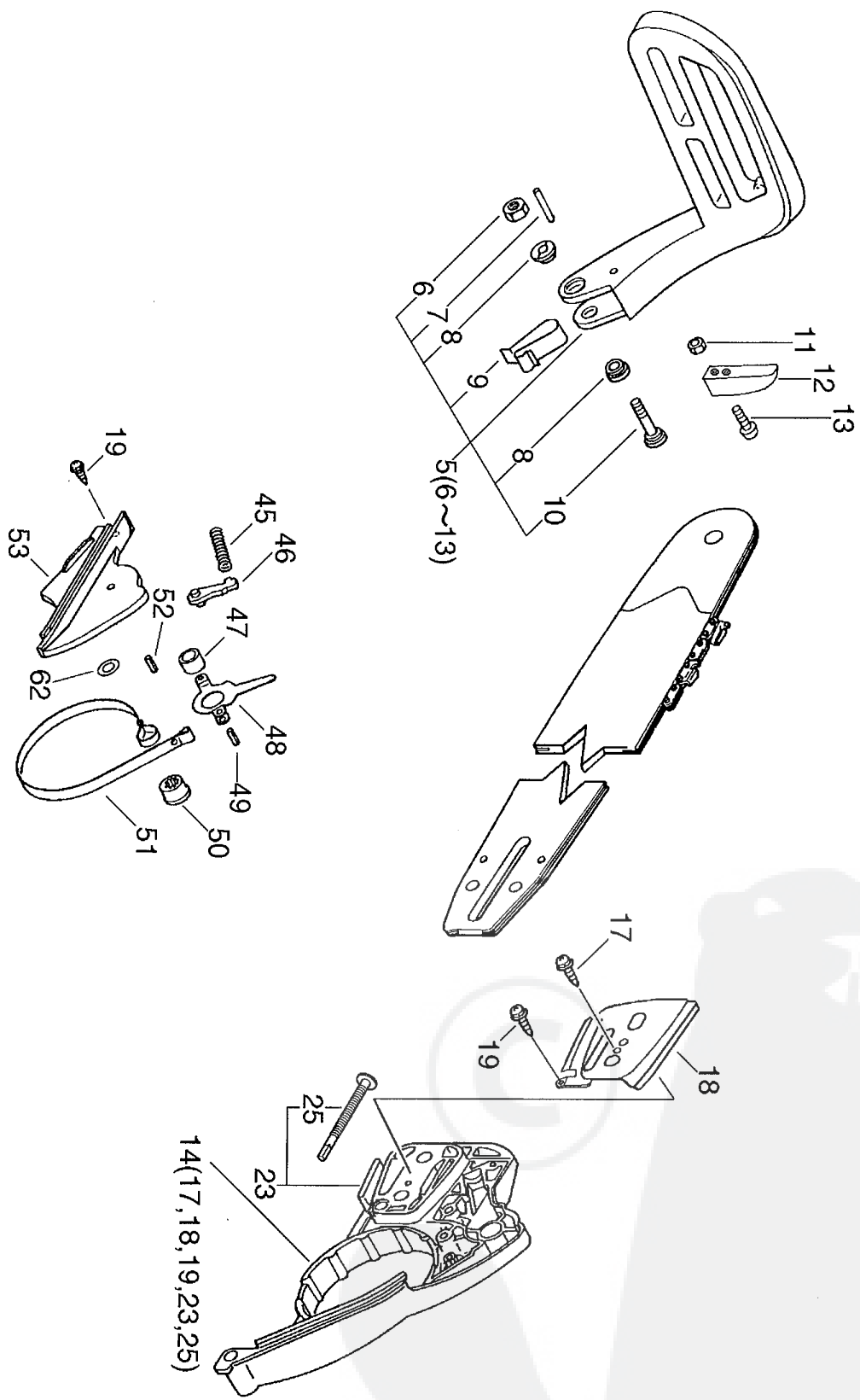
Key	lv	Part Number	Q'ty	Description	Remarks	Note
5		433201-39332	1	LEVER ASY, BRAKE		
6 +		900562-50005	1	LOCKNUT 5		
7 +		900330-30240	1	PIN 3*24		
8 +		433167-39130	2	SPACER		
9 +		433114-38331	1	SPRING		
10 +		91318-05032	1	SCREW		
11 +		900500-00004	2	NUT 4		
12 +		433171-39330	1	WEIGHT, BRAKE		
13 +		900238-04018	2	SCREW 4*18		
14		P021-001291	1	GUARD, SPROCKET SET	Sus. by P021-001292	
14		P021-001292	1	GUARD, SPROCKET SET		
17 +		900220-03006	1	SCREW 3*6		
18 +		C305-000001	1	PLATE, SPROCKET GUARD		
19 +		900253-04010	1	SCREW 4*10		
23 +		P021-010160	1	GUARD, SPROCKET KIT	Sus. by P021-010161	
23 +		P021-010161	1	GUARD, SPROCKET KIT		
25 ++		V203-000110	1	BOLT, 5		
15		433013-35431	1	PLATE, GUIDE (INNER)		
15		433013-35432	1	PLATE, GUIDE (INNER)	Sus. by 433013-35432	
16		900220-04006	1	SCREW 4*6		
19		900253-04010	2	SCREW 4*10		
20		880200-38330	1	BUMPER, SPIKED KIT		
21 +		900105-05012	2	BOLT, H.S. 5*12		
22		433019-12330	2	NUT, FLANGE 8		
24		X502-000000	1	LABEL, ECHO		
26		C309-000030	1	TENSIONER, CHAIN		
27		V651-000001	1	GEAR, BEVEL		
28		V651-000011	1	GEAR, BEVEL		

P a r t s L i s t

Group:Chain Saws Model:CS-5100(30) Section:Clutch, Sprocket (5)

Date:13/04/2010 Page: 2

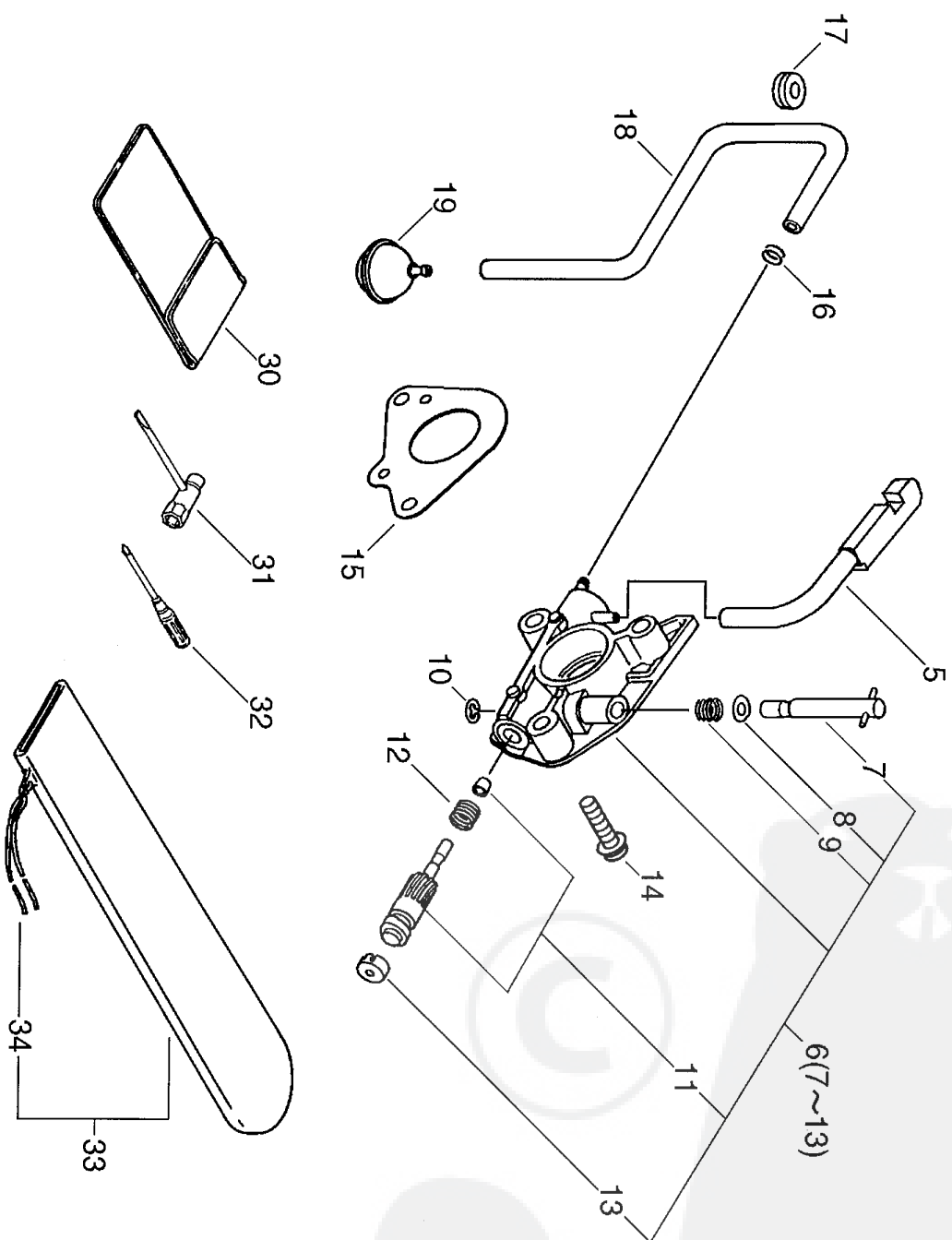
Key	Lv Part Number	Q'ty	Description	Remarks	Note
29	V355-000270	1	COLLAR, 8		
37	V557-000010	1	BEARING, NEEDLE 12		
38	A556-000020	1	DRUM, CLUTCH	Sus. By A556-000021	
38	A556-000021	1	DRUM, CLUTCH		
39	175114-12530	1	SPROCKET, RIM .325		
40	A551-000000	1	PLATE, CLUTCH		
45	433122-35430	1	SPRING, BRAKE		
46	433209-35430	1	STOPPER, BRAKE		
47	433115-38330	1	WASHER 5.2*12*14		
48	433208-35431	1	LEVER, BRAKE		
49	900330-40088	1	ROLLER 4*8.8		
50	433142-35430	1	ADJUSTER, BRAKE		
51	C328-000060	1	BAND, BRAKE		
52	900342-25012	1	PIN, SPRING 2.5*12		
53	433310-38330	1	COVER, BRAKE		
55	P021-007070	1	CLUTCH ASY W/PLATE	Sus. by P021-007071	
56 +	A552-000050	1	HUB, CLUTCH	Sus. by A552-000090	
57 +	V451-000500	3	SPRING, TENSION		
58 +	P021-007050	1	CLUTCH SHOE SET		
59 +	A551-000060	1	PLATE, CLUTCH		
62	V304-000090	1	WASHER, CIRCULAR 6		



P a r t s L i s t

Group:Chain Saws Model:CS-5100(30) Section:Chain Brake Assy (6)

Key	Lv	Part Number	Q'ty	Description	Remarks	Note
		P021-010130	1	BRAKE,ASM CHAIN	Sus. by P021-010131	
		P021-010131	1	BRAKE,ASM CHAIN		
5	+	433201-39332	1	LEVER ASY, BRAKE		
6	++	900562-50005	1	LOCKNUT 5		
7	++	900330-30240	1	PIN 3*24		
8	++	433167-39130	2	SPACER		
9	++	433114-38331	1	SPRING		
10	++	91318-05032	1	SCREW		
11	++	900500-00004	2	NUT 4		
12	++	433171-39330	1	WEIGHT, BRAKE		
13	++	900238-04018	2	SCREW 4*18		
14	+	P021-001291	1	GUARD, SPROCKET SET	Sus. by P021-001292	
14	+	P021-001292	1	GUARD, SPROCKET SET		
17	++	900220-03006	1	SCREW 3*6		
18	++	C305-000001	1	PLATE, SPROCKET GUARD		
19	++	900253-04010	1	SCREW 4*10		
23	++	P021-010160	1	GUARD, SPROCKET KIT	Sus. by P021-010161	
23	++	P021-010161	1	GUARD, SPROCKET KIT		
25	+++	V203-000110	1	BOLT, 5		
19	+	900253-04010	2	SCREW 4*10		
45	+	433122-35430	1	SPRING, BRAKE		
46	+	433209-35430	1	STOPPER, BRAKE		
47	+	433115-38330	1	WASHER 5,2*12*14		
48	+	433208-35431	1	LEVER, BRAKE		
49	+	900330-40088	1	ROLLER 4*8,8		
50	+	433142-35430	1	ADJUSTER, BRAKE		
51	+	C328-000060	1	BAND, BRAKE		
52	+	900342-25012	1	PIN, SPRING 2.5*12		

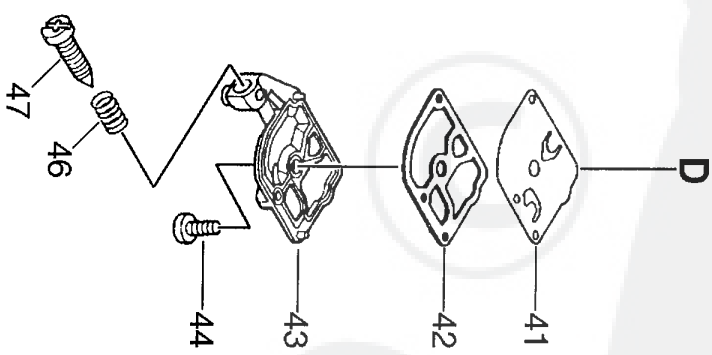
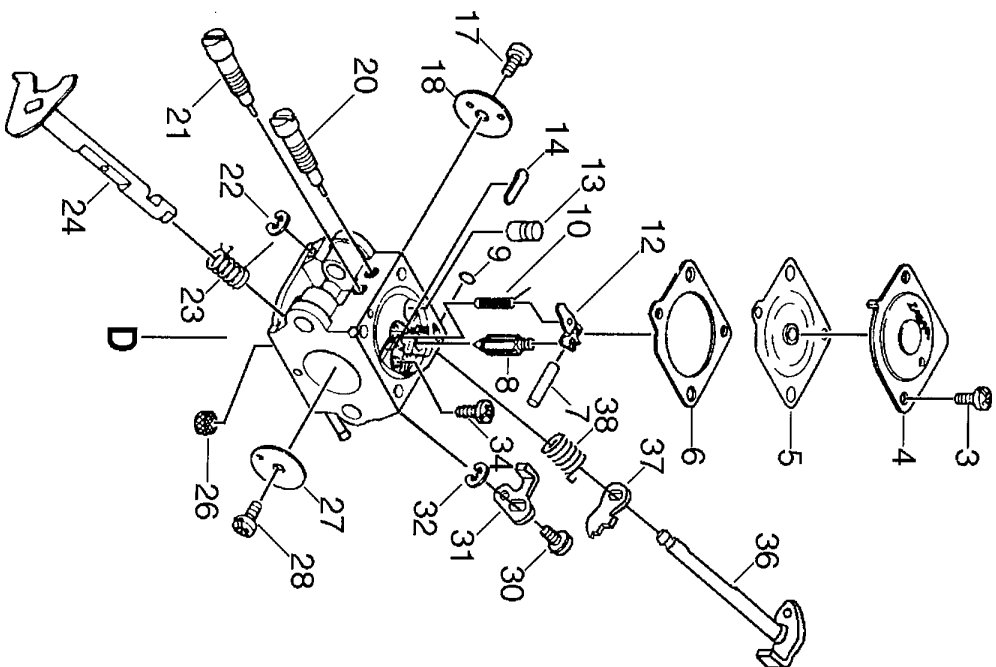


P a r t s L i s t

Group:Chain Saws Model:CS-5100(30) Section:Auto-Oiler, Tools (7)

Date:13/04/2010 Page: 1

Key	Lv	Part Number	Q'ty	Description	Remarks	Note
5		437229-38331	1	PIPE		
6		437002-38330	1	AUTO-OILER ASSY		
7	+	437016-38330	1	NEEDLE, ADJUST		
8	+	437029-37330	1	WASHER		
9	+	437015-37330	1	SPRING		
10	+	123127-15030	1	RING		
11	+	437024-37330	1	PLUNGER		
12	+	437019-38330	1	SPRING		
13	+	437062-38330	1	CAP, OIL PUMP		
14		900223-04016	2	SCREW		
15		175310-38330	1	PLATE, SEAL		
16		132013-26630	1	CLIP		
17		132115-12330	1	GROMMET		
18		437210-38330	1	PIPE, OIL		
19		436205-14730	1	STRAINER, OIL		
30		898510-39130	1	BAG, TOOL		
31		895410-02830	1	WRENCH, W/S. DRIVER		
32		895811-00130	1	DRIVER, SCREW 125	Sus. by X602-000080	
33		898548-14531	1	SCABBARD, CHAIN		
34	+	898568-14530	1	ROPE		



P a r t s L i s t

Group:Chain Saws Model:CS-5100(30) Section:Carburetor (8)

Date:13/04/2010 Page: 1

Key	Lv	Part Number	Q'ty	Description	Remarks	Note
		A021-000561	1	CARBURETOR, DIAPHRAGM		
3 +		125344-52130	2	SCREW		
4 +		125342-52130	1	COVER, DIAPHRAGM		
5 +		125341-49030	1	DIAPHRAGM		
6 +		125340-42030	1	GASKET, DIAPHRAGM		
7 +		125338-13930	1	PIN, METERING ARM		
8 +		125337-08260	1	VALVE, INLET NEEDLE		
9 +		125345-13310	1	PLUG, WELCH		
10 +		125322-13930	1	SPRING, COIL		
12 +		125323-08260	1	ARM, VALVE		
13 +		P005-000770	1	NOZZLE CHECK VALVE		
14 +		125345-51030	1	PLUG, WELCH		
17 +		125314-51230	1	SCREW		
18 +		P005-000900	1	VALVE, CHOKE		
20 +		P005-000850	1	NEEDLE, HIGH SPEED		
21 +		P005-000840	1	NEEDLE, IDLE		
22 +		125327-15130	1	CLIP		
23 +		P005-000790	1	SPRING, THRT. RETURN		
24 +		P005-000780	1	SHAFT ASY, THROTTLE		
26 +		P005-000860	1	SCREEN, FUEL INLET		
27 +		P005-000810	1	VALVE, THROTTLE		
28 +		125314-13930	1	SCREW		
30 +		125348-13930	1	SCREW		
31 +		P005-000800	1	LEVER, THROTTLE		
32 +		125327-13930	1	CLIP		
34 +		125339-13930	1	SCREW		
36 +		P005-001310	1	SHAFT, CHOKE		
37 +		P005-000890	1	LEVER, CHOKE		

P a r t s L i s t

Group:Chain Saws Model:CS-5100(30) Section:Carburetor (8)

Date:13/04/2010 Page: 2

Key	Lv	Part Number	Q'ty	Description	Remarks	Note
38 +		P005-000880	1	SPRING, CHOKE RETURN		
41 +		P005-000820	1	DIAPHRAGM, PUMP		
42 +		125325-08360	1	GASKET, PUMP		
43 +		P005-000830	1	COVER, PUMP		
44 +		125310-13930	1	SCREW		
46 +		125333-06960	1	SPRING, IDLE ADJUSTER		
47 +		125344-08560	1	SCREW		