

P a r t s L i s t

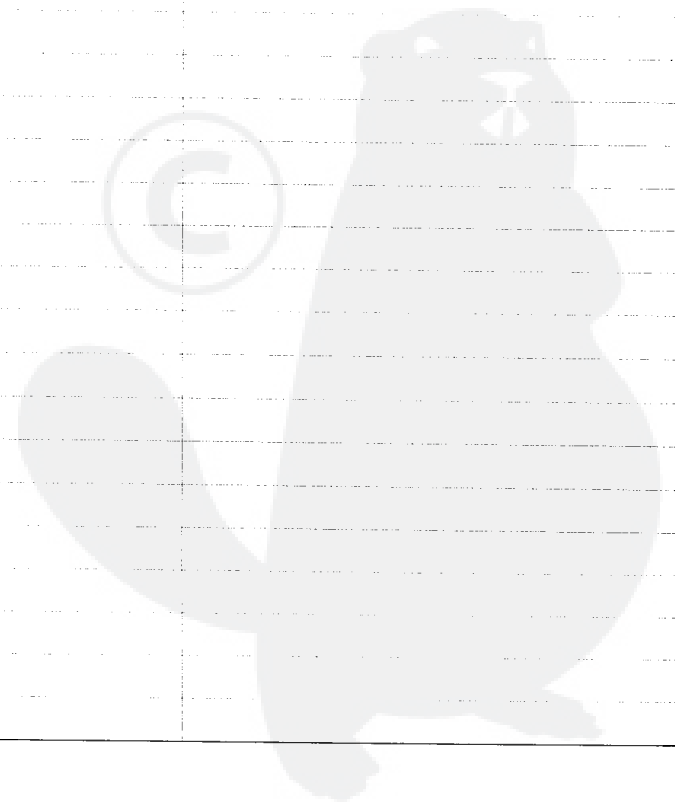
Group:Chain Saws Model:CS-600(36) Section:Cylinder, Crankcase, Piston(1)

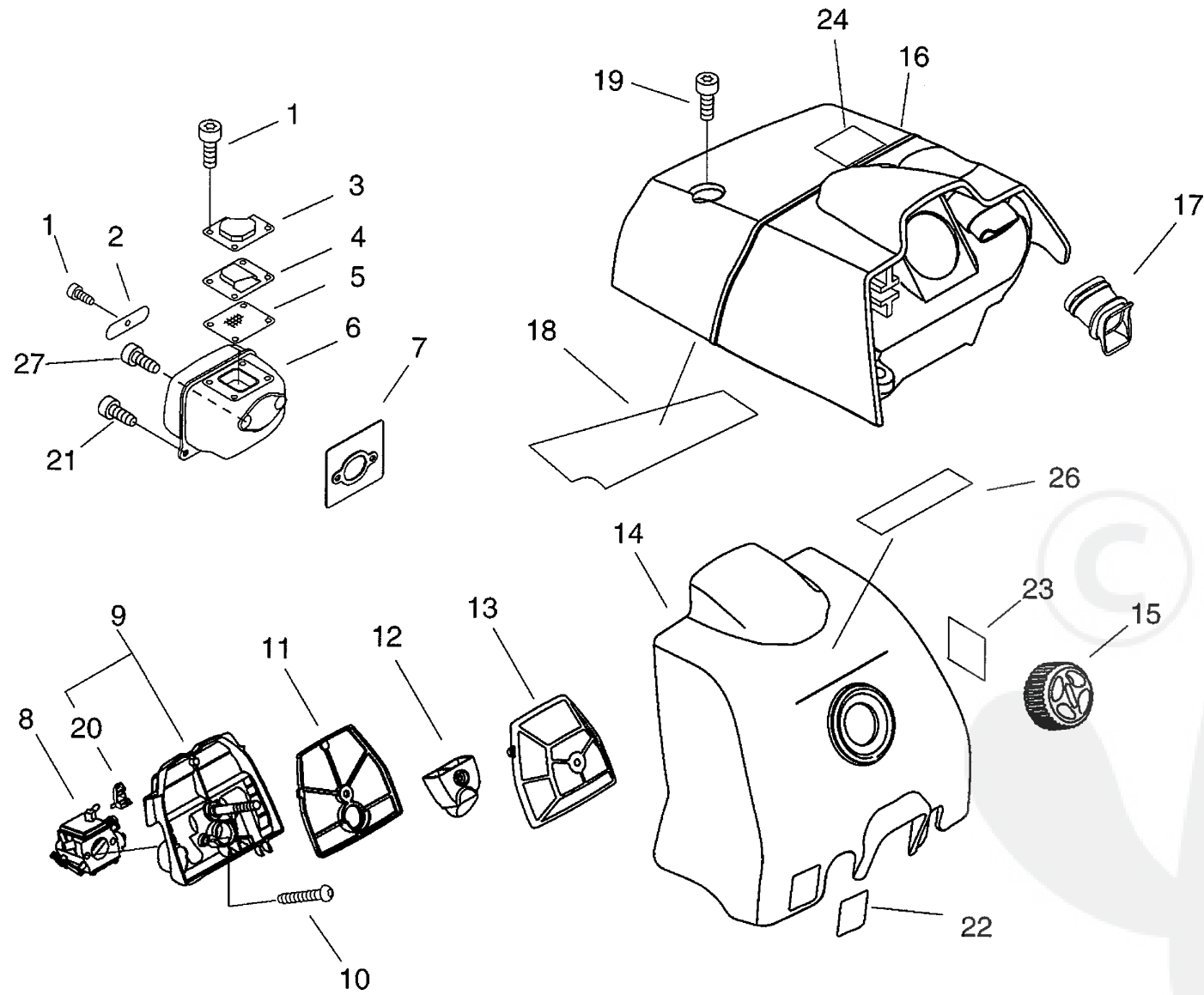
Key	Lv	Part Number	Q'ty	Description	Remarks	Note
1		A014-000040	1	RELEASE ASY., COMP.		
2		V805-000220	4	BOLT, TORX 5		
3		A130-000910	1	CYLINDER		
4		A202-000080	1	BELLOWS, INTAKE		
5		A206-000010	1	HOLDER, BELLOWS		
6		V805-000000	2	BOLT, TORX 5		
7		V100-000270	1	GASKET,CYL		
8		P021-015190	1	PISTON KIT		
9	+	A101-000210	1	RING, PISTON		
10	+	V580-000030	2	RING,END		
11	+	V609-000010	1	PIN,ENG 11		
12	+	V556-000000	1	BEARING,NEEDLE 11		
13	+	V308-000040	2	WASHER,CIRCULAR 11		
14		100142-30830	1	KEY, WOODRUFF		
15		P021-015130	1	CRANK CASE SET		
16	+	V508-000010	2	SEAL,OIL 15		
17	+	100215-02830	2	PIN, DOWEL		
18	+	V592-000000	2	BEARING, BALL		
19	+	V102-000060	1	GASKET,CRANKCASE		
20		V805-000010	2	BOLT, TORX 5		
21		V805-000020	4	BOLT, TORX 5		
22		V420-001790	2	CUSHION		
23		A239-000060	1	PIPE, INTAKE		
24		A011-000540	1	CRANKSHAFT,ASY		
25		V360-000060	1	COLLAR,18		
26		V805-000000	1	BOLT, TORX 5		
27		E106-000020	1	GUIDE,AIR		
28		P021-016030	1	CAP, OIL		

Parts List

Group:Chain Saws Model:CS-600(36) Section:Cylinder, Crankcase, Piston(1)

Key	Lv	Part Number	Q'ty	Description	Remarks	Note
29	+	131051-19830	1	LINK		
30	+	900246-03008	1	SCREW 3*8		
31	+	131050-19830	1	RETAINER, LINK		
32	+	900720-00028	1	O-RING 28		
33		437239-14730	1	NIPPLE		
34		436114-13930	1	VALVE, CHECK		
35		V805-000170	1	BOLT, TORX 5		
36		V141-000090	1	GROMMET, PLUG		
37		132115-01461	1	GROMMET		

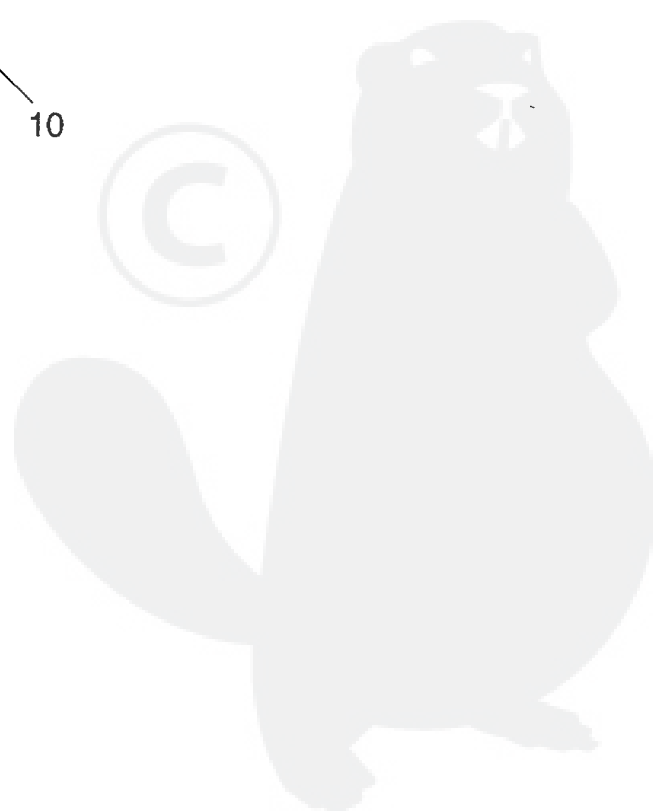
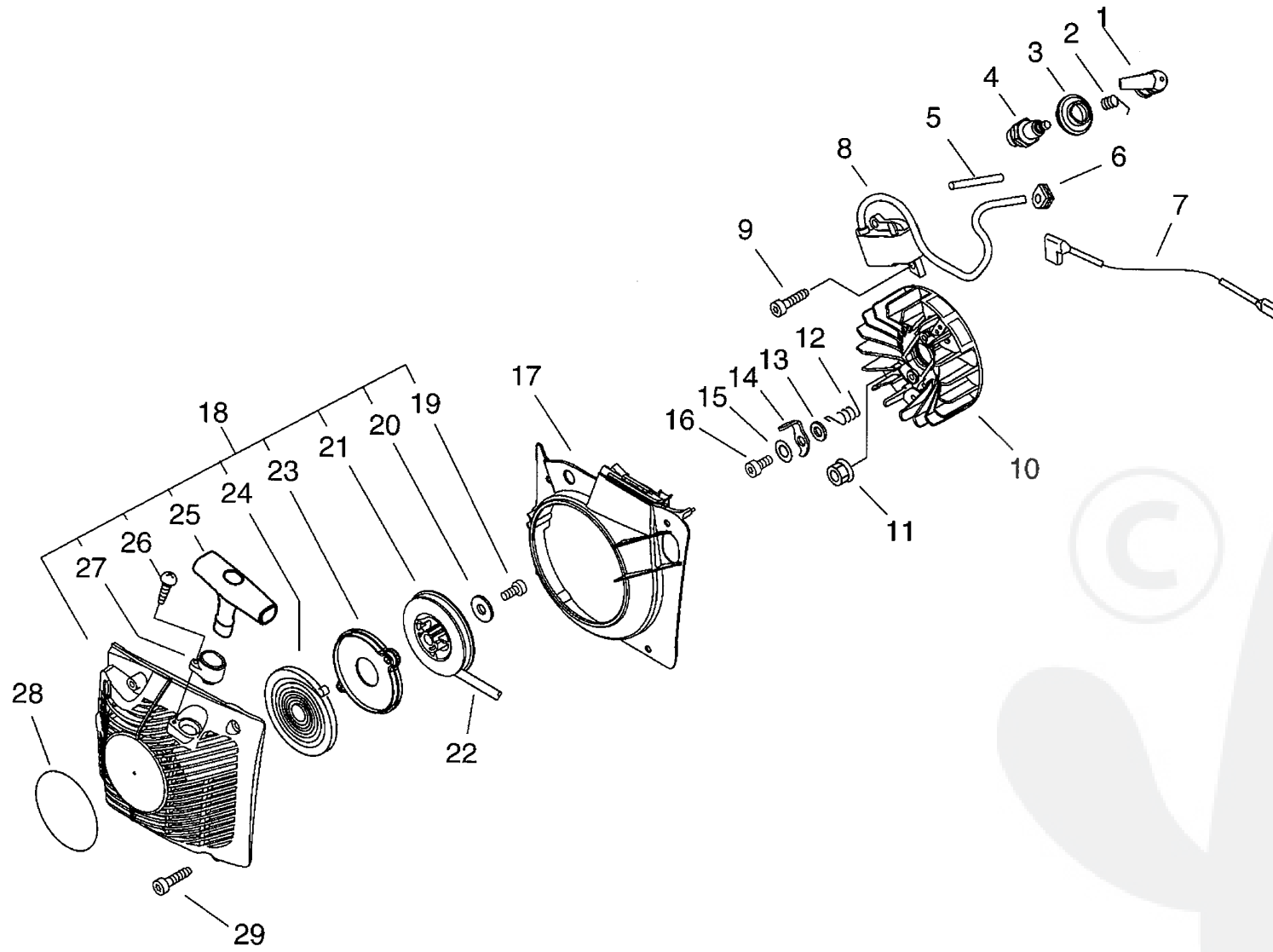




P a r t s L i s t

Group:Chain Saws Model:CS-600(36) Section:Air Cleaner, Carburetor, Muffler(2)

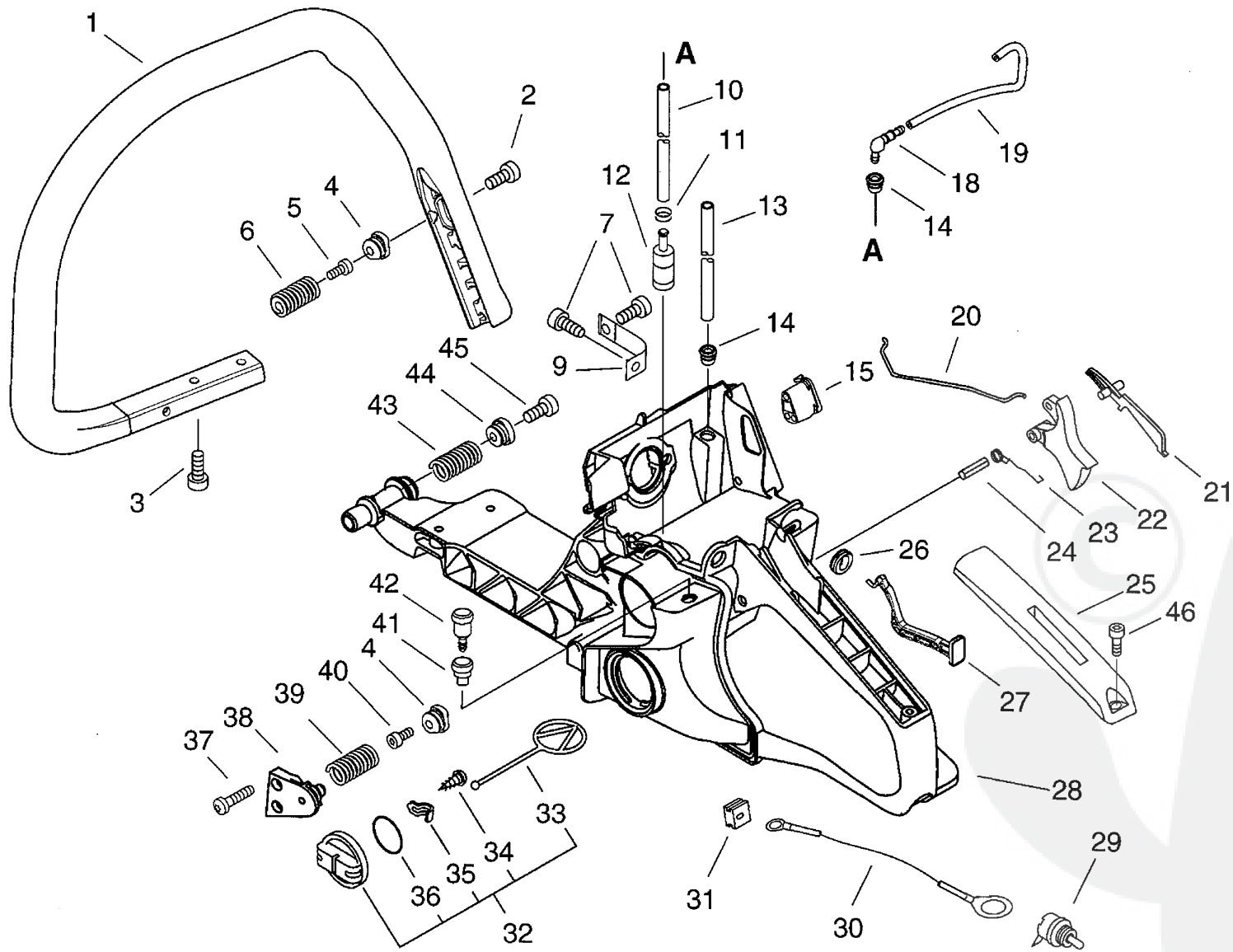
Key	Lv	Part Number	Q'ty	Description	Remarks	Note
1		V804-000030	5	BOLT, TORX 4		
2		A301-000030	1	PLATE, MUFFLER		
3		A313-001050	1	GUIDE, EXHAUST		
4		A313-001040	1	GUIDE, EXHAUST		
5		A310-000100	1	SCREEN, ARRESTOR		
6		A300-000770	1	MUFFLER, EXHAUST		
7		V104-000910	1	GASKET, EXHAUST		
8		A021-001660	1	CARBURETOR, DIAPHRAGM		
9		P021-016020	1	CASE, CLEANER		
20 +		A219-000000	1	SHUTTER, AIR		
10		V805-000030	2	BOLT, TORX 5		
11		A226-000450	1	ELEMENT, AIR FILTER		
12		A244-000080	1	PLATE, PREVENT		
13		A226-000440	1	ELEMENT, AIR FILTER		
14		A232-000470	1	LID, CLEANER		
15		A235-000190	1	KNOB, CLEANER LID		
16		A160-001080	1	COVER, CYLINDER		
17		A239-000070	1	PIPE, INTAKE		
18		V341-000140	1	WASHER, SQUARE		
19		V805-000000	3	BOLT, TORX 5		
21		V805-000210	2	BOLT, TORX 5		
22		890157-39130	1	LABEL, SWITCH		
23		890631-38130	1	LABEL, CAUTION		
24		890345-39230	1	LABEL, CAUTION		
26		X503-009510	1	LABEL, MODEL		
27		V855-000000	2	BOLT, TORX 5		



P a r t s L i s t

Group:Chain Saws Model:CS-600(36) Section:Starter, Magneto(3)

Key	Lv	Part Number	Q'ty	Description	Remarks	Note
1		A427-000013	1	CAP, SPARK PLUG		
2		A426-000010	1	TERMINAL, SPARKPLUG		
3		A429-000040	1	COVER, CAP		
4		A425-000000	1	SPARKPLUG		
5		V475-004130	1	TUBE		
6		V135-000040	1	GROMMET, HT CORD		
7		V485-001090	1	LEAD		
8		A411-000450	1	COIL, IGNITION		
9		V805-000000	2	BOLT, TORX 5		
10		A409-000360	1	ROTOR, MAGNETO		
11		900515-00008	1	NUT, FLANGE 8		
12		177234-35430	2	SPRING, RETURN		
13		177247-04630	2	SPACER, RATCHET		
14		177218-19830	2	PAWL, STARTER		
15		900603-00005	2	WASHER 5		
16		V835-000000	2	BOLT, TORX 5		
17		A172-000840	1	COVER, FAN		
18		P021-015160	1	STARTER ASY		
19 +		V805-000130	1	BOLT, TORX 5		
20 +		177214-02830	1	WASHER		
21 +		A506-000110	1	REEL, ROPE		
22 +		177226-07060	1	ROPE, STARTER		
23 +		A503-000030	1	PLATE, STARTER		
24 +		177220-35430	1	SPRING, REWIND		
25 +		A511-000070	1	GRIP, STARTER		
26 +		900296-03016	1	SCREW 3*16		
27 +		A510-000090	1	GUIDE, ROPE		
28		X502-000460	1	LABEL, ECHO		



Parts List

Group:Chain Saws Model:CS-600(36) Section:Handle(4)

Date:7/07/2010 Page: 1

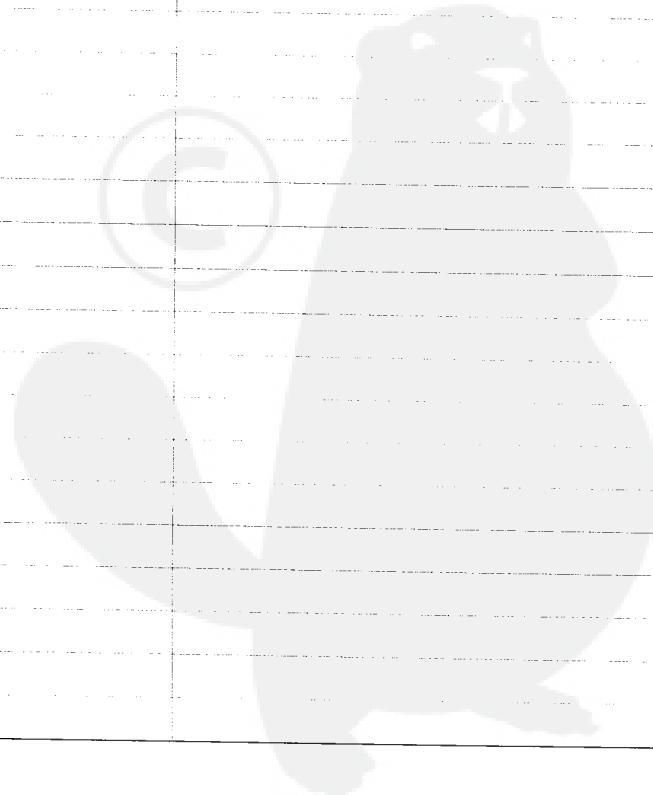
Key	Lv	Part Number	Q'ty	Description	Remarks	Note
1		C400-000550	1	HANDLE, FRONT		
2		V806-000000	1	BOLT, TORX 6		
3		V805-000010	4	BOLT, TORX 5		
4		V456-000080	2	HOLDER, SPRING		
5		V805-000000	1	BOLT, TORX 5		
6		V450-000730	1	SPRING, COMPRESSION		
7		V805-000000	2	BOLT, TORX 5		
9		C617-000360	1	STOPPER		
10		V471-000600	1	PIPE		
11		132013-09820	1	CLIP		
12		131205-19831	1	STRAINER, FUEL		
13		130110-30830	1	PIPE, IMPULSE		
14		132115-01461	2	GROMMET		
15		V131-000020	1	GROMMET, NEEDLE		
18		V186-000080	1	JOINT, PIPE		
19		130110-14530	1	PIPE, IMPULSE		
20		C454-000170	1	ROD, THROTTLE		
21		178090-37930	1	LOCKOUT, T. CONTROL		
22		C450-000360	1	CONTROL, THROTTLE		
23		V452-000260	1	SPRING, TORSION		
24		900345-40025	1	PIN, SPRING 4*25SUS		
25		C411-000001	1	LID, HANDLE		
26		V130-000030	1	GROMMET, CHOKE		
27		A241-000170	1	KNOB, CHOKE		
28		C410-000460	1	HANDLE, REAR		
29		A440-001190	1	SWITCH, ON OFF		
30		V485-001100	1	LEAD		
31		150114-04920	1	BUSHING		

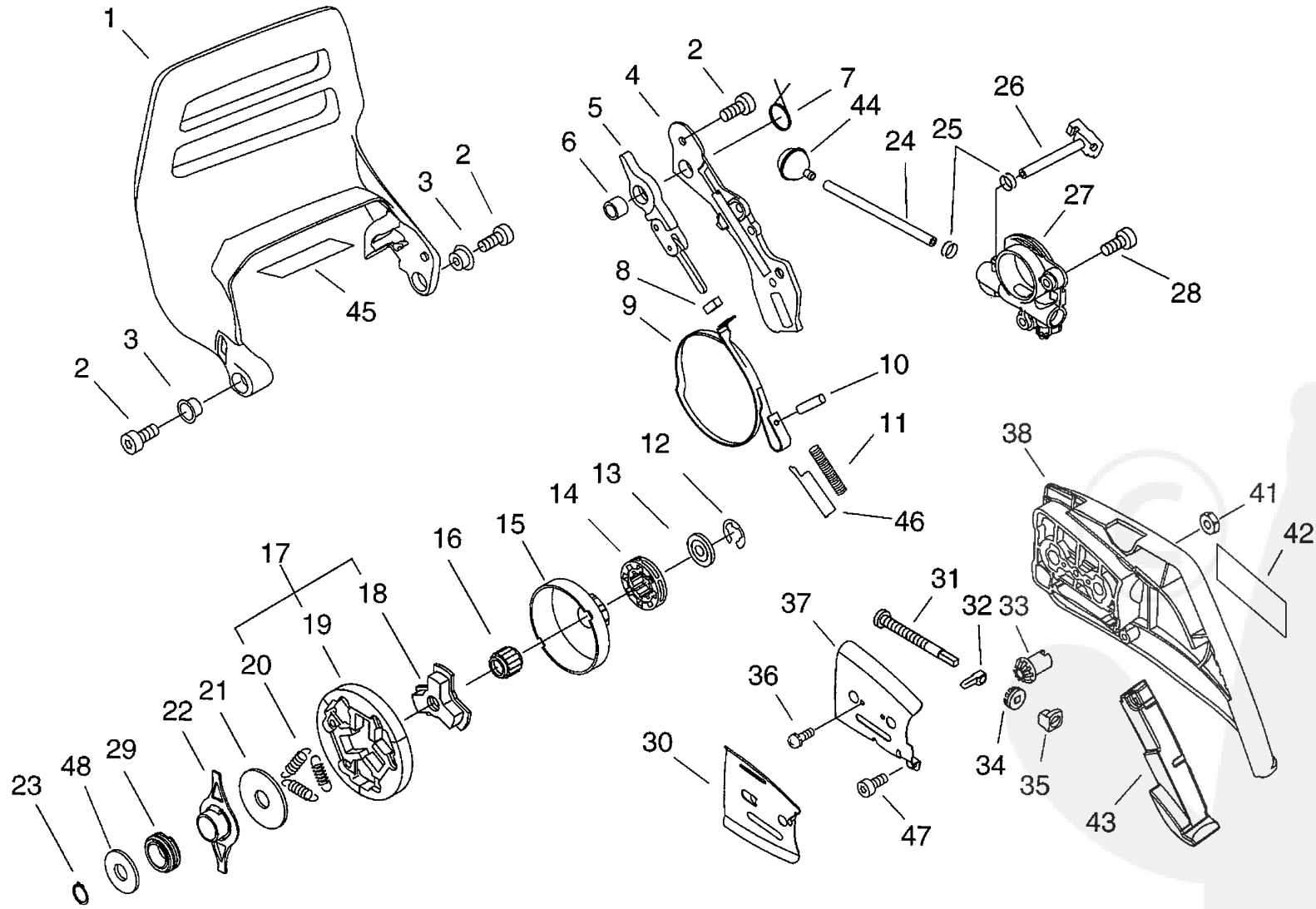
P a r t s L i s t

Group:Chain Saws Model:CS-600(36) Section:Handle(4)

Date:7/07/2010 Page: 2

Key	Lv	Part Number	Q'ty	Description	Remarks	Note
32		P021-016040	1	CAP,FUER ASSY		
33	+	131051-19830	1	LINK		
34	+	900246-03008	1	SCREW 3*8		
35	+	131050-19830	1	RETAINER, LINK		
36	+	900720-20029	1	O-RING 29		
37		V805-000010	2	BOLT, TORX 5		
38		V456-000090	1	HOLDER, SPRING		
39		V450-000760	1	SPRING, COMPRESSION		
40		V805-000230	1	BOLT, TORX 5		
41		A359-000000	1	COVER, VENT		
42		131300-56430	1	VALVE, CHECK		
43		V450-000770	1	SPRING, COMPRESSION		
44		V456-000100	1	HOLDER, SPRING		
45		V806-000000	1	BOLT, TORX 6		
46		V804-000000	1	BOLT, TORX 4		





P a r t s L i s t

Date:7/07/2010 Page: 1

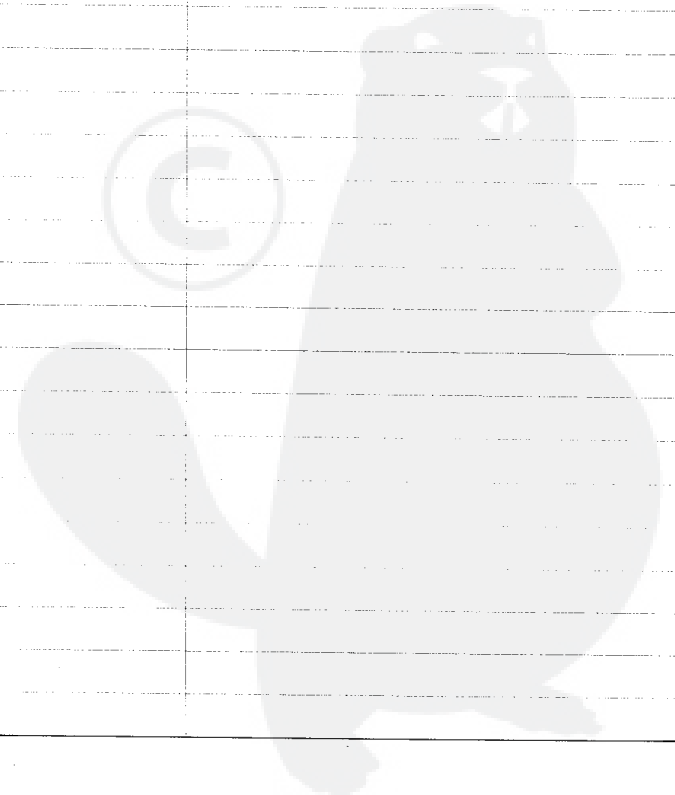
Group:Chain Saws Model:CS-600(36) Section:Clutch, Sprocket(5)

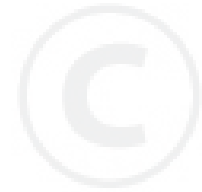
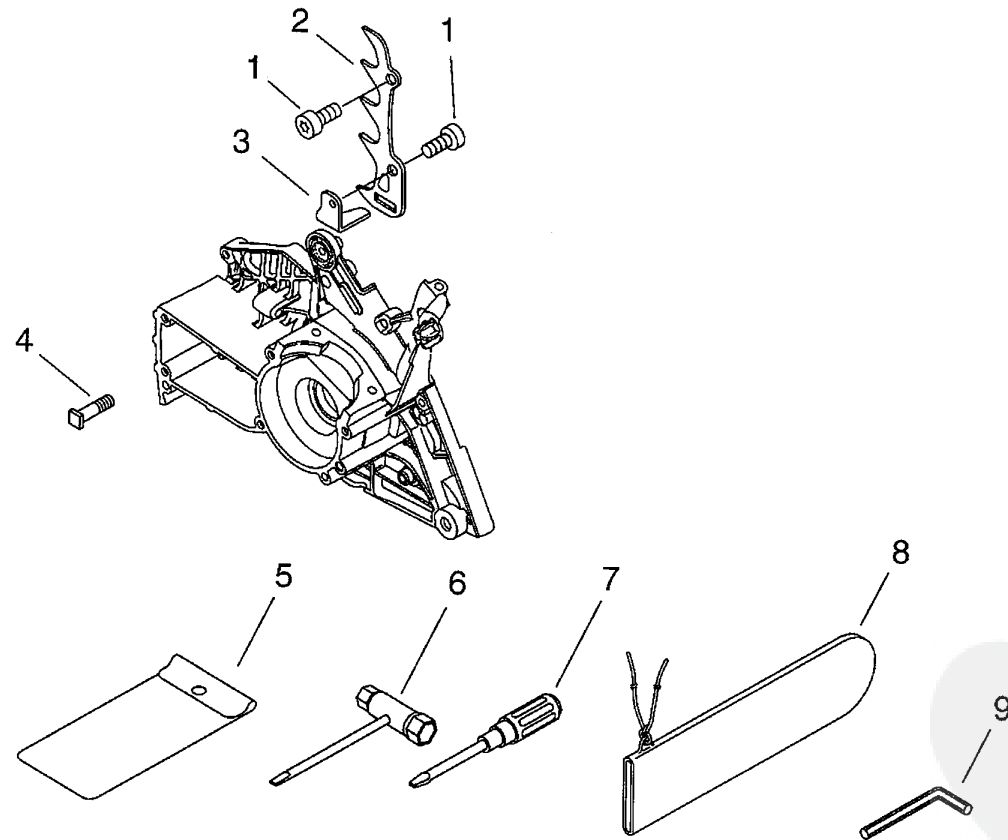
Key	Lv	Part Number	Q'ty	Description	Remarks	Note
1		C320-000180	1	LEVER, BRAKE		
2		V805-000000	5	BOLT, TORX 5		
3		V356-000440	2	COLLAR,10		
4		C345-000280	1	COVER, BRAKE		
5		C334-000110	1	CONNECTOR, BRAKE		
6		433116-35430	1	SPACER 8		
7		V452-000400	1	SPRING, TORSION		
8		V376-000450	1	SPACER		
9		C328-000120	1	BAND, BRAKE		
10		93050-30080	1	ROLLER		
11		V450-000740	1	SPRING, COMPRESSION		
12		V583-000130	1	RING		
13		V307-000180	1	WASHER, CIRCULAR 10		
14		175033-14731	1	SPROCKET, RIM 68210S		
15		A556-000550	1	DRUM, CLUTCH		
16		100113-04630	1	BEARING, NEEDLE		
17		A056-000220	1	CLUTCH ASY		
18	+	A552-000110	1	HUB, CLUTCH		
19	+	A555-000070	3	SHOE, CLUTCH		
20	+	V451-000500	3	SPRING, TENSION		
21		A551-000110	1	PLATE, CLUTCH		
22		V358-000090	1	COLLAR, 14		
23		900701-00015	1	CIRCLIP 15		
24		437210-30830	1	PIPE, OIL		
25		132013-09820	2	CLIP		
26		V470-000830	1	PIPE		
27		C022-000050	1	AUTO-OILER ASSEMBLY		
28		V804-000000	2	BOLT, TORX 4		

Parts List

Group:Chain Saws Model:CS-600(36) Section:Clutch, Sprocket(5)

Key	Lv	Part Number	Q'ty	Description	Remarks	Note
29		V652-000050	1	GEAR, WORM		
30		C305-000110	1	PLATE, SPROCKET GUARD		
31		V203-000110	1	BOLT, 5		
32		C309-000070	1	TENSIONER, CHAIN		
33		V651-000001	1	GEAR, BEVEL		
34		V651-000011	1	GEAR, BEVEL		
35		V355-000270	1	COLLAR, 8		
36		900241-03006	1	SCREW 3*6		
37		C305-000100	1	PLATE, SPROCKET GUARD		
38		C300-000410	1	GUARD, SPROCKET		
41		V265-000110	2	NUT, 8		
42		X502-000340	1	LABEL, ECHO		
43		C302-000010	1	PAD, GUARD		
44		436205-14730	1	STRAINER, OIL		
45		V341-000130	1	WASHER, SQUARE		
46		C603-000220	1	PLATE, SIDE		
47		V804-000000	1	BOLT, TORX 4		
48		V311-000090	1	WASHER, CIRCULAR 16-1		

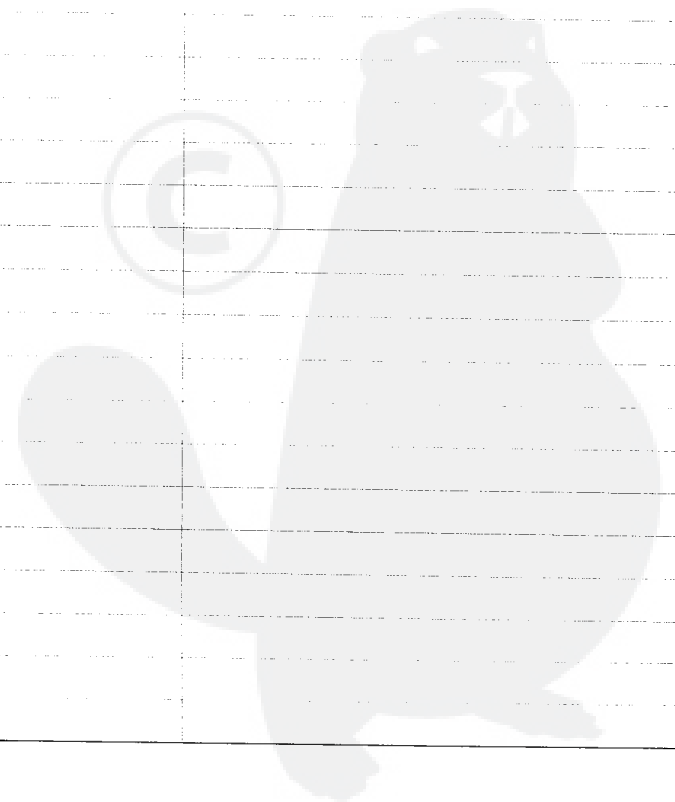


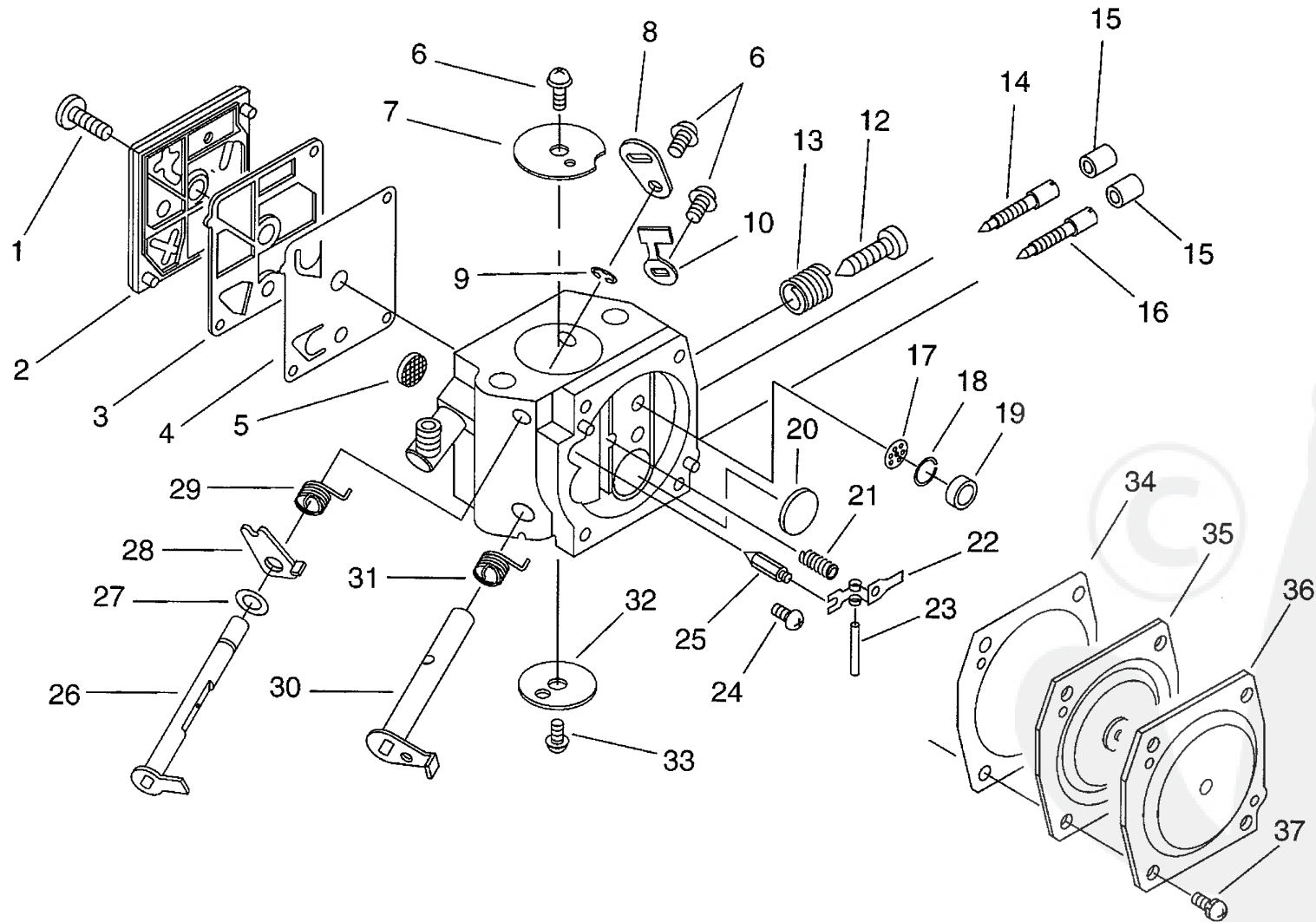


Parts List

Group:Chain Saws Model:CS-600(36) Section:Tools(6)

Key	Lv	Part Number	Q'ty	Description	Remarks	Note
1		V805-000000	2	BOLT, TORX 5		
2		C304-000040	1	SPIKED		
3		C310-000010	1	CATCHER, CHAIN		
4		V205-000400	2	BOLT, 8		
5		898510-07130	1	BAG, TOOL		
6		X602-000080	1	TOOL,WRENCH		
7		895812-03930	1	DRIVER, SCREW 50		
8		898548-14531	1	SCABBARD, CHAIN		
9		X605-000050	1	TOOL,L WRENCH		





P a r t s L i s t

Group:Chain Saws Model:CS-600(36) Section:Carburettor(7)

Key	Lv	Part Number	Q'ty	Description	Remarks	Note
		A021-001660	1	CARBURETOR, DIAPHRAGM		
1	+	123110-16130	1	SCREW, PUMP COVER		
2	+	123124-19830	1	COVER, FUEL PUMP		
3	+	123125-12330	1	GASKET, FUEL PUMP		
4	+	123112-12330	1	DIAPHRAGM, FUEL PUMP		
5	+	123126-10631	1	SCREEN, INLET		
6	+	123114-38830	3	SCREW		
7	+	123116-16130	1	VALVE, THROTTLE		
8	+	P003-002300	1	LEVER, CHOKE		
9	+	123127-15030	1	RING		
10	+	123156-30830	1	STOP, THROTTLE		
12	+	123134-04260	1	SCREW, IDLE ADJUST		
13	+	123133-04260	1	SPRING, IDLE ADJUST		
14	+	123120-32631	1	NEEDLE, HIGH SPEED		
15	+	P003-000010	2	LIMITER CAP		
16	+	123118-02261	1	NEEDLE		
20	+	123146-10631	1	PLUG, WELCH		
21	+	123122-32630	1	SPRING, METER. LEVER		
22	+	123123-18330	1	LEVER, METERING		
23	+	123138-03930	1	PIN, METERING LEVER		
24	+	123139-03930	1	SCREW, M. LEVER PIN		
25	+	123137-19830	1	VALVE, INLET NEEDLE		
26	+	P003-002290	1	SHAFT, CHOKE		
27	+	123149-26030	1	WASHER		
28	+	P003-000620	1	LEVER-FAST IDLE		
29	+	P003-000610	1	SPRING		
30	+	P003-002280	1	SHAFT, THROTTLE		
31	+	P003-000560	1	SPRING, THRT. RETURN		

Parts List

Group:Chain Saws Model:CS-600(36) Section:Carburettor(7)

Key	Lv	Part Number	Q'ty	Description	Remarks	Note
32	+	123132-16130	1	VALVE, CHOKE		
33	+	123114-05260	1	SCREW		
34	+	123140-16130	1	GASKET, M. DIAPHRAGM		
35	+	123141-16131	1	DIAPHRAGM, METERING		
36	+	123142-17330	1	COVER, M. DIAPHRAGM		
37	+	123130-02960	4	SCREW		

