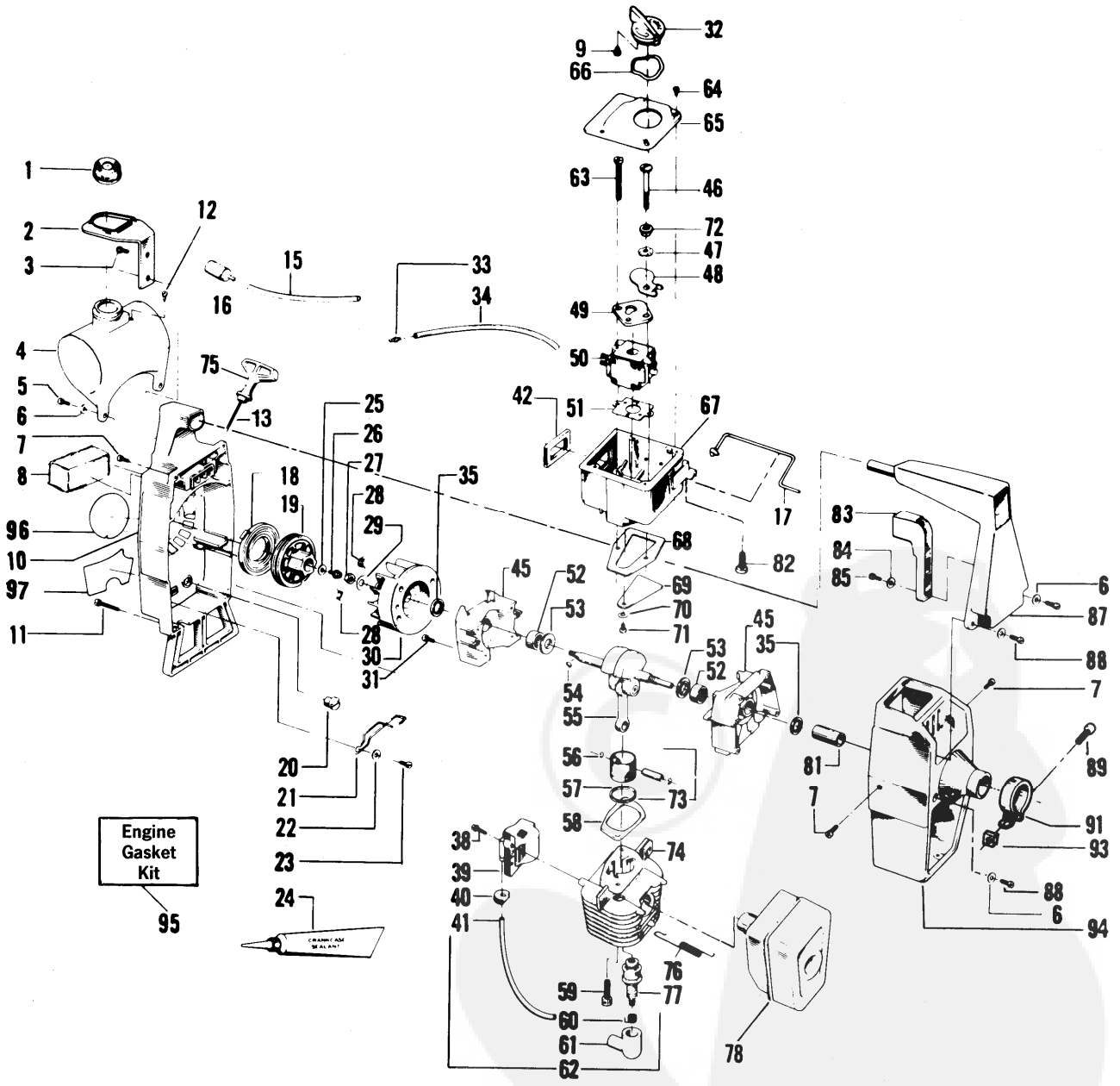




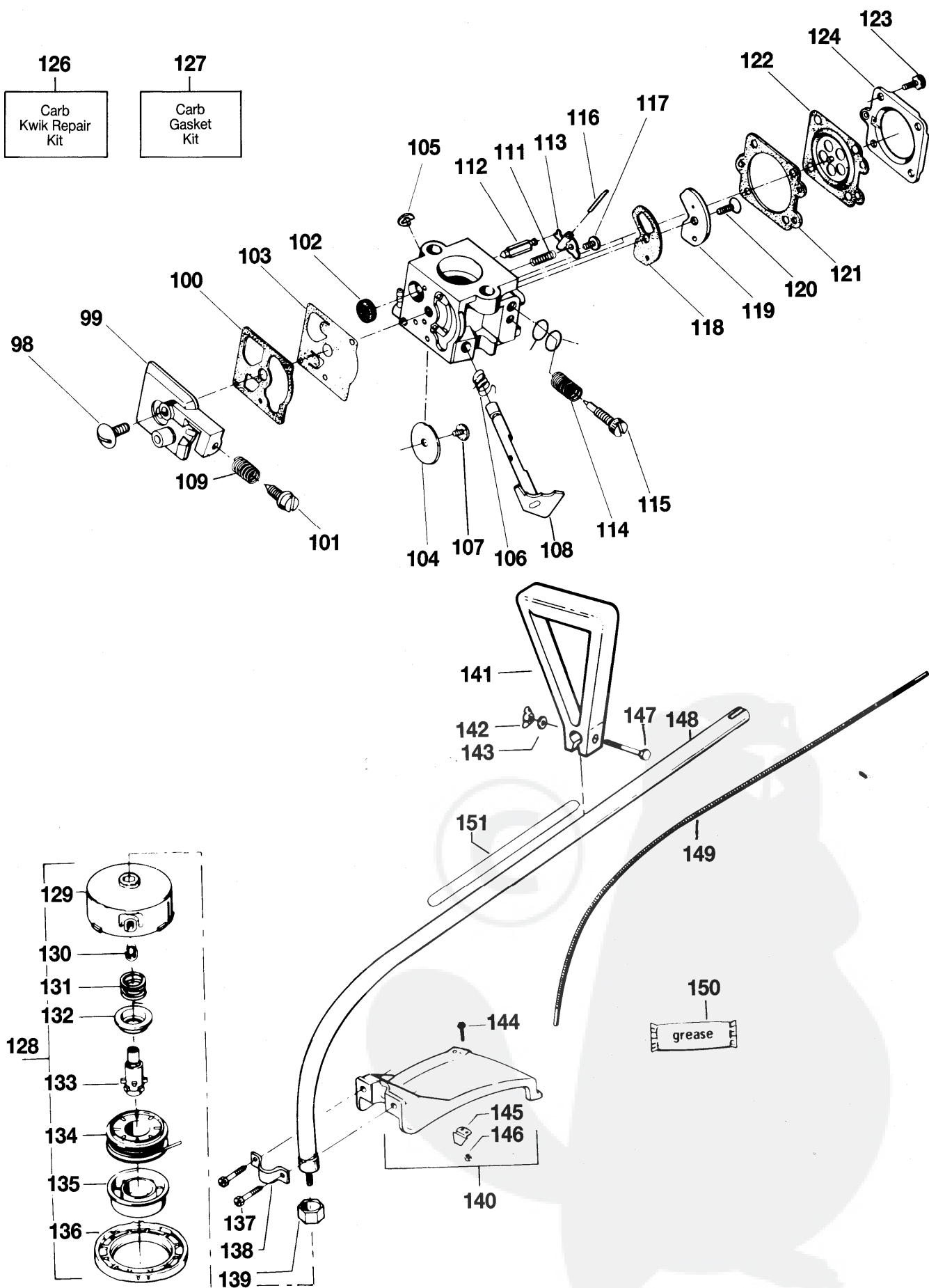
# WEEDEATER 1400 9527033-25





# WEEDEATER 1400 9527033-25

| KEY No. | PART No.     | DESCRIPTION           | QUANTITY | COMMENTS APPLICATION           | KEY No. | PART No.     | DESCRIPTION            | QUANTITY | COMMENTS APPLICATION   |
|---------|--------------|-----------------------|----------|--------------------------------|---------|--------------|------------------------|----------|------------------------|
| 1       | 5300107-29/8 | FUEL CAP ASSEMBLY     | 1        |                                | 52      | 5300320-29/7 | BEARING                | 2        |                        |
| 2       | 5300253-77/9 | BRACKET-FUEL TANK     | 1        |                                | 53      | 5300153-51/6 | WASHER                 | 2        |                        |
| 3       | 5300922-43/1 | SCREW                 | 1        |                                | 54      | 5300151-26/2 | FLYWHEEL KEY           | 1        |                        |
| 4       | 5300108-87/4 | FUEL TANK ASSEMBLY    | 1        | (INCL.1, 12, 15 & 16)          | 55      | 5300264-18/0 | CRANKSHAFT & ROD ASS'Y | 1        |                        |
| 5       | 5300155-09/9 | SCREW                 | 2        |                                | 56      | 5300151-62/7 | WRIST PIN RETAINER     | 2        |                        |
| 6       | 5300151-23/9 | WASHER                | 6        |                                | 57      | 5300264-13/1 | PISTON RING            | 1        |                        |
| 7       | 5300155-90/9 | SCREW                 | 4        |                                | 58      | 5300191-11/0 | GASKET                 | 1        | ●                      |
| 8       | 5300243-71/3 | AIR FILTER            | 1        |                                | 59      | 5300152-39/3 | SCREW                  | 1        |                        |
| 9       | 5300157-40/0 | SCREW                 | 1        |                                | 60      | 5300039-33/5 | CONNECTOR              | 1        |                        |
| 10      | 5300108-91/6 | FAN HOUSING ASS'Y     | 1        |                                | 61      | 5300039-34/3 | BOOT                   | 1        |                        |
| 11      | 5300155-94/1 | SCREW                 | 2        |                                | 62      | 5300391-03/3 | LEAD ASS'Y             | 1        | (INCL. 41, 60, 61)     |
| 12      | 5300261-19/4 | CHECK VALVE           | 1        |                                | 63      | 5300156-74/1 | SCREW                  | 1        |                        |
| 13      | 5300692-32/3 | ROPE KIT              | 1        |                                | 64      | 5300152-35/1 | SCREW                  | 4        |                        |
| 15      | 5300692-47/1 | LINE KIT              | 1        |                                | 65      | 5300271-00/3 | COVER                  | 1        |                        |
| 16      | 5300108-97/3 | FUEL PICK-UP ASS'Y    | 1        |                                | 66      | 5300157-41/8 | WASHER                 | 1        |                        |
| 17      | 5300271-90/4 | THROTTLE WIRE         | 1        |                                | 67      | 5300271-89/6 | CARB. CASE ASSEMBLY    | 1        |                        |
| 18      | 5300420-67/5 | RECOIL SPRING         | 1        |                                | 68      | 5300191-08/6 | CARB./CRANKCASE GASKET | 1        | ●                      |
| 19      | 5300260-48/5 | STARTER-PULLEY        | 1        |                                | 69      | 5300244-38/0 | REED VALVE             | 1        |                        |
| 20      | 5300266-79/7 | BUTTON                | 1        |                                | 70      | 5300233-67/2 | WASHER                 | 1        |                        |
| 21      | 5300265-59/1 | SPRING                | 1        |                                | 71      | 5300152-41/9 | SCREW                  | 1        |                        |
| 22      | 5300153-82/1 | WASHER                | 1        |                                | 72      | 5300156-73/3 | SPACER                 | 1        |                        |
| 23      | 5300154-07/6 | SCREW                 | 1        |                                | 73      | 5300107-53/8 | PISTON KIT             | 1        | (INCL. 56, 57 & PIN)   |
| 24      | 5300300-54/7 | CRANKCASE SEALANT     | 1        | 3oz TUBE (Optional)            | 74      | 5300121-68/7 | CYLINDER               | 1        |                        |
| 25      | 5300151-23/9 | WASHER                | 1        |                                | 75      | 5300267-35/7 | STARTER HANDLE         | 1        |                        |
| 26      | 5300154-79/5 | SCREW                 | 1        |                                | 76      | 5300249-03/3 | SPRING                 | 2        |                        |
| 27      | 5306266-05/6 | FLYWHEEL NUT          | 1        |                                | 77      | 5300300-58/8 | SPARK PLUG (RCJ-8)     | 1        |                        |
| 28      | 5300420-59/2 | STARTER DOG SPRING    | 2        |                                | 78      | 5300692-43/0 | MUFFLER ASS'Y          | 1        |                        |
| 29      | 5300151-27/0 | WASHER                | 1        |                                | 81      | 5300939-25/2 | DRIVE ADAPTOR          | 1        |                        |
| 30      | 5300391-14/0 | FLYWHEEL ASS'Y        | 1        | (INCL. 28)                     | 82      | 5300157-23/6 | SCREW                  | 1        |                        |
| 31      | 5300153-69/8 | SCREW                 | 4        |                                | 83      | 5300253-42/3 | THROTTLE TRIGGER       | 1        |                        |
| 32      | 5300271-01/1 | KNOB                  | 1        |                                | 84      | 5300153-82/1 | WASHER                 | 1        |                        |
| 33      | 5300269-81/7 | FUEL LINE FITTING     | 1        |                                | 85      | 5300154-07/6 | SCREW                  | 1        |                        |
| 34      | 5300210-73/8 | FUEL LINE             | 1        |                                | 87      | 5300257-04/4 | HANDLE                 | 1        |                        |
| 35      | 5300190-59/1 | SEAL                  | 2        | ●                              | 88      | 5300151-63/5 | SCREW                  | 4        |                        |
| 38      | 5300151-28/8 | SCREW                 | 1        |                                | 89      | 5300156-09/7 | SCREW                  | 1        |                        |
| 39      | 5300691-81/2 | IGNITION MOD. KIT     | 1        | (INCL. 21, 40 & 62)            | 91      | 5300265-60/9 | SHROUD CLAMP           | 1        |                        |
| 40      | 5300244-35/6 | PLUG WIRE GROMMET     | 1        |                                | 93      | 5300156-10/5 | NUT                    | 1        |                        |
| 41      | 5300390-82/9 | LEAD WIRE             | 1        |                                | 94      | 5300265-47/6 | SHROUD                 | 1        |                        |
| 42      | 5300191-05/2 | CARBURETTOR CASE SEAL | 1        | ●                              | 95      | 5300692-19/0 | ENGINE GASKET KIT      | 1        | (● INDICATES CONTENTS) |
| 45      | 5300107-57/9 | CRANKCASE ASS'Y       | 2        | (INCL. 35, 52 and QTY.1 OF 31) | 96      | 5300273-12/4 | DECAL-STARTING INST.   | 1        |                        |
| 46      | 5300156-30/3 | SCREW                 | 1        |                                | 97      | 5300276-91/1 | DECAL-CHOKE/OFF        | 1        |                        |
| 47      | 5300152-54/2 | WASHER                | 1        |                                |         |              |                        |          |                        |
| 48      | 5300267-72/0 | CHOKE SHUTTER         | 1        |                                |         |              |                        |          |                        |
| 49      | 5300267-97/7 | GUIDE PLATE           | 1        |                                |         |              |                        |          |                        |
| 50      | 5300352-57/1 | CARBURETTOR WA-198    | 1        |                                |         |              |                        |          |                        |
| 51      | 5300191-15/1 | GASKET                | 1        | ●                              |         |              |                        |          |                        |





# WEEDEATER 1400 9527033-25

| KEY No. | PART No      | DESCRIPTION             | QUANTITY | COMMENTS APPLICATION          | KEY No. | PART No      | DESCRIPTION             | QUANTITY | COMMENTS APPLICATION |
|---------|--------------|-------------------------|----------|-------------------------------|---------|--------------|-------------------------|----------|----------------------|
| 98      | 5300350-17/9 | SCREW                   | 1        | ■                             | 134     | 9527015-23/5 | SPOOL W/LINE            | 1        |                      |
| 99      | 5300351-91/2 | COVER ASS'Y             | 1        | (INCL. 101) ■                 | 135     | 5300933-87/5 | RELEASE BUTTON          | 1        |                      |
| 100     | 5300351-64/9 | GASKET                  | 1        | ●                             | 136     | 5300921-33/4 | COVER                   | 1        |                      |
| 101     | 5300352-03/5 | SCREW                   | 1        | WA-198                        | 137     | 5300922-43/1 | SCREW                   | 2        |                      |
|         | 5300351-56/5 | SCREW                   | 1        | WA-149                        | 138     | 5300936-53/0 | BRACKET                 | 1        |                      |
| 102     | 5300351-78/9 | SCREEN-INLET            | 1        | ■                             | 139     | 5300937-16/5 | DUST CUP                | 1        |                      |
| 103     | 5300351-66/4 | DIAPHRAGM-PUMP          | 1        | ● ■                           | 140     | 5300692-13/3 | KIT-SHIELD ASS'Y        | 1        |                      |
| 104     | 5300351-33/4 | VALVE                   | 1        | WA-149                        | 141     | 5300939-00/5 | ASSIST HANDLE           | 1        |                      |
|         | 5300352-54/8 | VALVE                   | 1        | WA-198                        | 142     | 5300913-73/7 | WING NUT                | 1        |                      |
| 105     | 5300350-07/0 | CLIP                    | 1        |                               | 143     | 5300151-49/4 | WASHER                  | 1        |                      |
| 106     | 5300351-38/3 | SPRING                  | 1        |                               | 144     | 5300150-37/1 | SCREW                   | 2        |                      |
| 107     | 5300350-15/3 | SCREW                   | 1        | ■                             | 145     | 5300945-70/5 | LIMITER-LINE            | 1        |                      |
| 108     | 5300351-32/6 | SHAFT ASSEMBLY-THROTTLE | 1        |                               | 146     | 5300152-17/9 | NUT                     | 2        |                      |
| 109     | 5300352-08/4 | SPRING                  | 1        |                               | 147     | 5300157-37/6 | SCREW                   | 1        |                      |
| 110     | 5300352-18/3 | "O" RING MIXTURE        | 1        |                               | 148     | 5300939-43/5 | DRIVE SHAFT ASS'Y       | 1        | (INCL. 139)          |
| 111     | 5300351-39/1 | SPRING                  | 1        | ■                             | 149     | 5300939-35/1 | FLEXIBLE SHAFT ASSEMBLY | 1        |                      |
| 112     | 5300351-06/0 | VALVE                   | 1        | ■                             | 150     | 5300301-02/4 | FLEX SHAFT LUBE         | 1        |                      |
| 113     | 5300350-31/0 | LEVER                   | 1        |                               | 151     | 5300274-30/4 | DECAL                   | 1        |                      |
| 114     | 5300352-14/2 | SPRING                  | 1        | WA-198                        |         |              |                         |          |                      |
|         | 5300350-6/9  | SPRING                  | 1        | WA-149                        |         |              |                         |          |                      |
| 115     | 5300351-42/5 | NEEDLE MIXTURE          | 1        | WA-149                        |         |              |                         |          |                      |
|         | 5300352-12/6 | NEEDLE                  | 1        | WA-149                        |         |              |                         |          |                      |
| 116     | 5300350-28/6 | PIN                     | 1        | ■                             |         |              |                         |          |                      |
| 117     | 5300350-16/1 | SCREW                   | 1        |                               |         |              |                         |          |                      |
| 118     | 5300352-11/8 | GASKET                  | 1        | ● ■ WA-198                    |         |              |                         |          |                      |
|         | 5300351-47/4 | GASKET                  | 1        | WA-149                        |         |              |                         |          |                      |
| 119     | 5300351-61/5 | PLATE                   | 1        | WA-198                        |         |              |                         |          |                      |
|         | 5300350-42/7 | PLATE                   | 1        | WA-149                        |         |              |                         |          |                      |
| 120     | 5300351-37/5 | SCREW                   | 1        | ■                             |         |              |                         |          |                      |
| 121     | 5300351-51/6 | GASKET                  | 1        | ● ■                           |         |              |                         |          |                      |
| 122     | 5300350-14/6 | DIAPHRAGM ASS'Y         | 1        | ● ■                           |         |              |                         |          |                      |
| 123     | 5300351-53/2 | SCREW ASS'Y             | 1        | WA-149                        |         |              |                         |          |                      |
|         | 5300350-21/1 | SCREW ASS'Y             | 1        | WA-198                        |         |              |                         |          |                      |
| 124     | 5300350-03/9 | COVER                   | 1        | WA-198                        |         |              |                         |          |                      |
|         | 5300351-49/0 | COVER                   | 1        | WA-149                        |         |              |                         |          |                      |
| 125     | 5300352-17/5 | MIXTURE WASHER          | 1        |                               |         |              |                         |          |                      |
| 126     | 5300352-20/9 | KIT-CARB. KWIK KIT      | 1        | (■ INDICATES CONTENTS) WA-198 |         |              |                         |          |                      |
|         | 5300351-85/4 | KIT-CARB. KWIK KIT      | 1        | WA-149                        |         |              |                         |          |                      |
| 127     | 5300351-86/2 | KIT-CARB. GASK/DIAPH    | 1        | (● INDICATES CONTENTS) WA-149 |         |              |                         |          |                      |
|         | 5300352-19/1 | KIT-CARB. GASK/DIAPH    | 1        | WA-198                        |         |              |                         |          |                      |
| 128     | 5300938-94/0 | CUTTING HEAD ASS'Y      | 1        |                               |         |              |                         |          |                      |
| 129     | 5300938-96/5 | HUB W/LINE SAVER        | 1        |                               |         |              |                         |          |                      |
| 130     | 5300938-98/1 | LINE SAVER              | 1        |                               |         |              |                         |          |                      |
| 131     | 5300920-67/4 | SPRING                  | 1        |                               |         |              |                         |          |                      |
| 132     | 5300920-68/2 | ADAPTOR-SPRING          | 1        |                               |         |              |                         |          |                      |
| 133     | 5300938-97/3 | DRIVE GEAR              | 1        |                               |         |              |                         |          |                      |

WHERE NO APPLICATION DETAILS ARE SHOWN, PART APPLIES TO ALL COUNTRIES

PRODUCT VARIANT

9527033-25 GB

**N.B. WHERE A FAILURE OCCURS WITHIN WARRANTY, WHICH WOULD INVOLVE REPLACEMENT OF ANY OF THE FOLLOWING PARTS, YOU SHOULD FIRST CONTACT FLYMO TECHNICAL SERVICE DEPARTMENT: CYLINDER, PISTON ASSY., CRANKSHAFT ASSY., CRANKCASE, COMPLETE CARBURETTOR ASSY.**