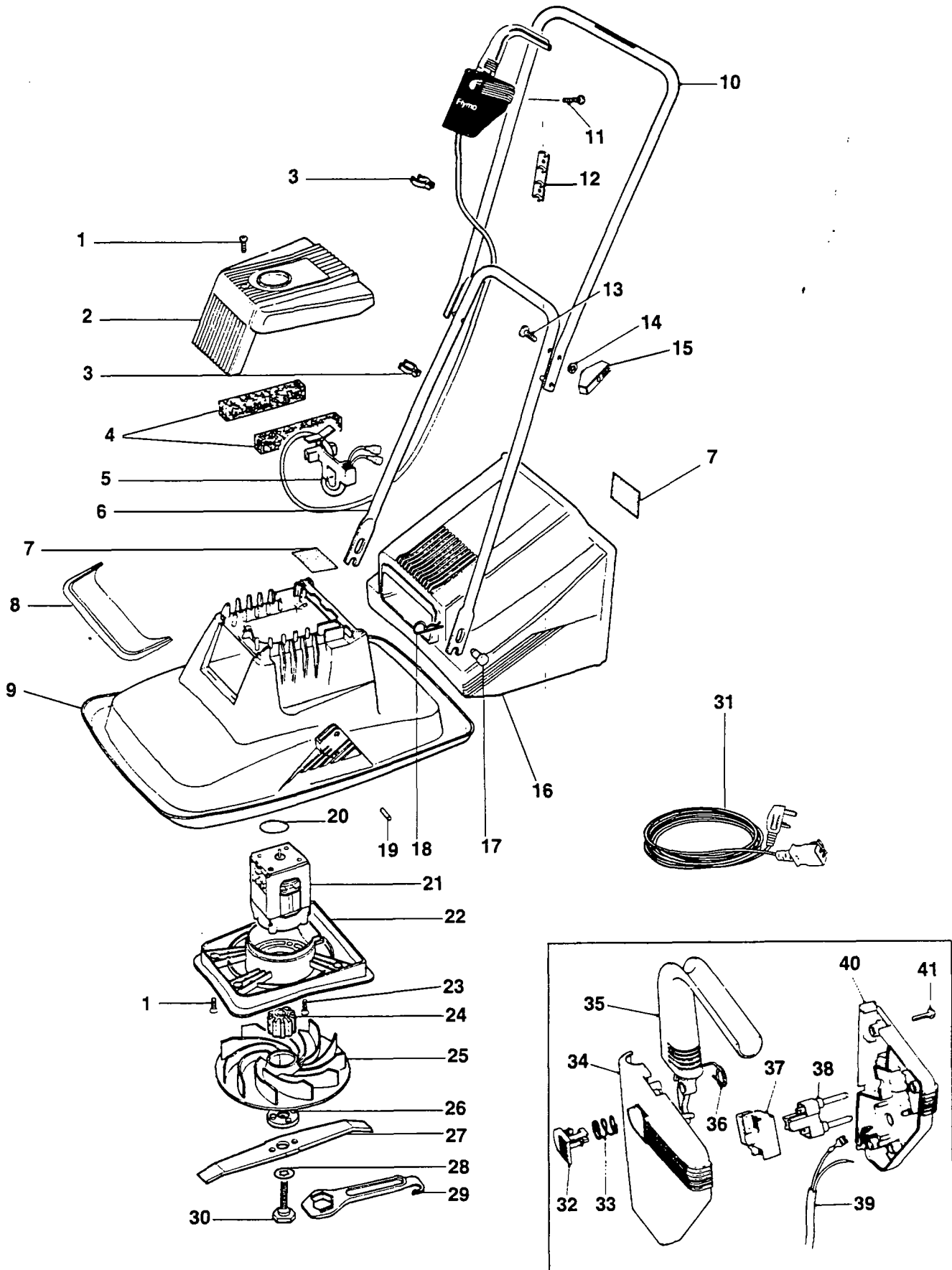


Flymo

MODEL	Minimo Plus XE
PRODUCT NO.	9632563



Flymo

MODEL	Minimo Plus XE
PRODUCT NO.	9632563

KEY	PART NUMBER	DESCRIPTION	QTY
01	5146736-00/3	SCREW	5
02	5126731-01/6	COWL	1
03	5137750-00/5	CABLE CLIP	2
04	5148267-00/7	FILTER	2
05	5126741-00/7	CLAMP,PLASTIC	1
06	5117690-01/5	HANDLE,LOWER	1
07	5146467-00/5	LABEL,WARNING	2
08	5126732-01/4	LABEL,FLYMO	1
09	5126829-00/0	HOOD 25CM	1
10	5126816-21/3	HANDLE/LABEL ASSY	1
11	5146672-00/0	SCREW	2
12	5117659-01/0	RETAINER,SWITCHBOX	1
13	5148672-00/8	HANDLE BOLT	2
14	5140266-00/7	WASHER	2
15	5140690-04/0	WING KNOB	2
16	5117146-04/2	GRASSBOX ASSEMBLY	1
17	5140092-03/1	PIVOT PIN	2
18	5140423-00/4	PIN,RETAINING	2
19	5147594-00/5	PIN	2
20	5146469-01/9	WARNING DISC ASSY	1
21	5150004-01/7	MOTOR - 240V	1
22	5106491-00/3	MOTOR MOUNTING PLATE	1
23	5148122-01/2	SCREW	4
24	5126764-00/9	INSERT,IMPELLER	1
25	5116967-10/9	IMPELLER	1
26	5138110-01/9	BLADE SPACER PEGGED	3
27	5126535-01/1	BLADE 25CM	1
28	5148259-00/4	WASHER,ANTI FRICTION PTFE	1
29	5126682-00/3	SPANNER/SCRAPER	1
30	5137608-00/5	BLADE BOLT C/W PTFE WASHER	1
31	5127250-03/2	MAINS LEAD	1
32	5127008-00/0	LOCK OFF	1
33	5148658-00/7	SPRING,LOCK OFF	1
34	5106539-01/7	SWITCHBOX UPPER	1
35	5106481-01/2	LEVER	1
36	5148657-00/9	SPRING,TORSION	1
37	5137685-00/3	SWITCH	1
38	5137686-00/1	PIN RETAINER	1
39	5148814-11/3	LEAD ASSEMBLY	1
40	5106538-00/1	SWITCHBOX LOWER	1
41	5146672-00/0	SCREW	4

PRODUCT APPLICATION

9632563-01 GB

WHERE NO APPLICATION DETAILS ARE SHOWN, PART APPLIES TO ALL COUNTRIES

A Austria; AUS Australia; B Belgium; CND Canada; CH Switzerland; D Germany; DK Denmark; E Spain; EI Elre; F France; GB Great Britain; I Italy; N Norway; NL Netherlands; NZ New Zealand; O/S Overseas; P Portugal; S Sweden; SF Finland; USA America; ZA South Africa