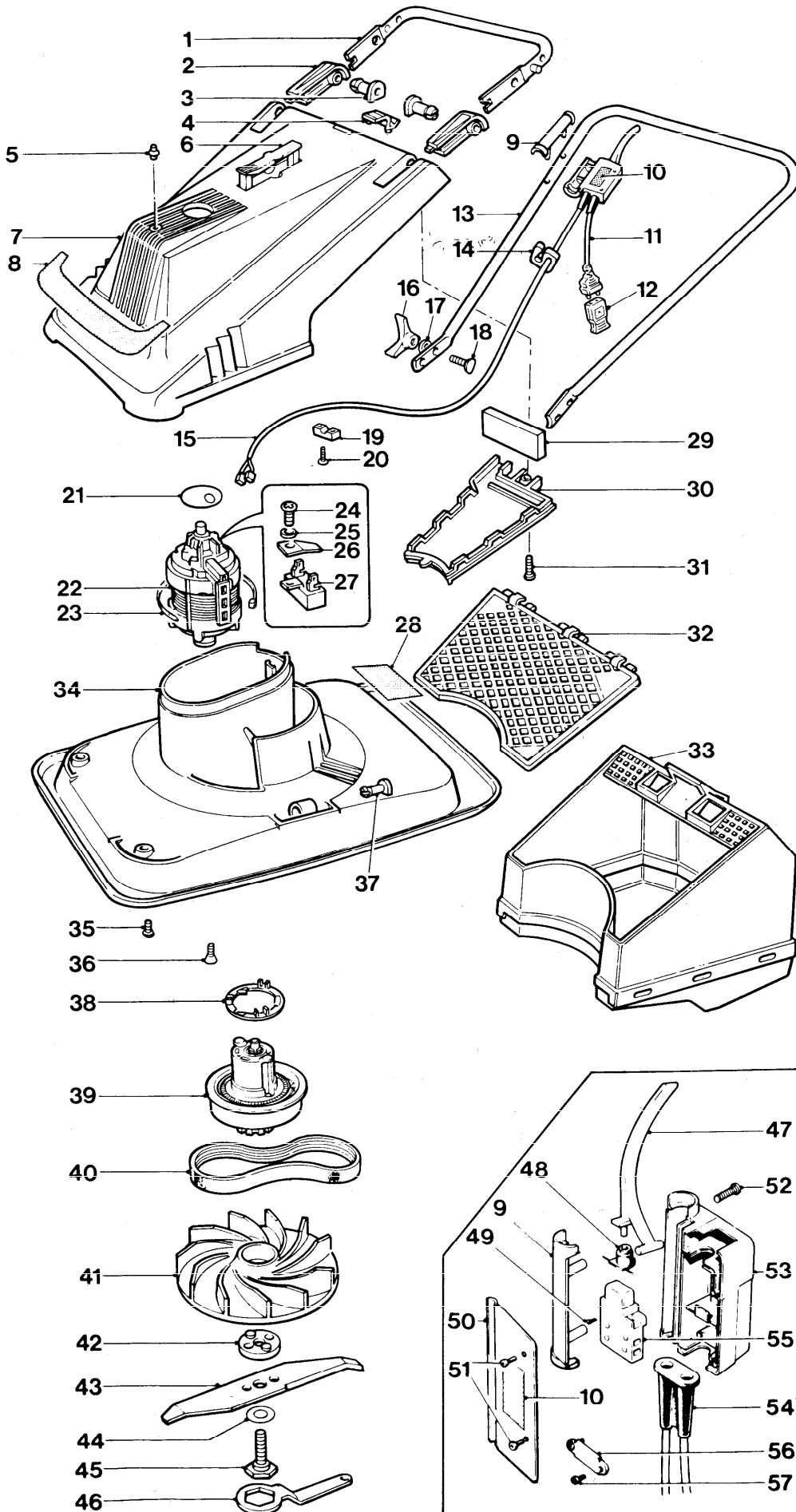




SPRINTMASTER XE30-2 9635165 9635166





**SPRINTMASTER XE30-2 9635165
9635166**

KEY NO.	PART NO.	DESCRIPTION	QUANTITY	COMMENTS	KEY NO.	PART NO.	DESCRIPTION	QUANTITY	COMMENTS
1	5116952-00/2	HANDLE LOWER	1		28	5146467-00/5	LABEL WARNING	2	GB.O/S.E.P.El.
2	5116627-00/0	HANDLE RETAINER	2			5136507-00/0	LABEL WARNING	2	D.CH.A.
3	5137456-00/9	PIN RETAINING	2			5136364-00/6	LABEL WARNING	2	N.
4	5126373-00/9	CATCH	1			5146466-00/7	LABEL WARNING	2	N.DK.F.B.
5	5148052-00/3	RIVET	1			5136361-00/2	LABEL WARNING	2	SF.
6	5126550-00/2	HANDLE CARRYING	1			5146465-00/9	LABEL WARNING	2	F.B.NL.
7	5116787-06/9	COWLING ASSY C/W LENS	1	GB. ONLY		5147511-00/9	LABEL WARNING	2	F.B.NL.CH.
	5116787-07/7	COWLING ASSY C/W LENS	1			5146486-00/5	LABEL WARNING	2	I.
8	5136725-00/8	LABEL FLYMO	1			5147602-00/6	LABEL WARNING	2	O/S.E.
9	5126378-01/6	SWITCHBOX RETAINER 18mm	1			5146504-00/5	LABEL WARNING	2	S.
						5147227-00/2	LABEL WARNING (ELCB)	2	S.
10	5147942-00/6	LABEL SWITCHBOX LOCK OFF	1	GB.	29	5147912-00/9	FILTER	1	
	5136704-03/7	LABEL SWITCHBOX LOCK OFF	1	A.F.B.NL.CH.	30	5116769-01/8	COVER AIR INTAKE	1	
	5136704-02/9	LABEL SWITCHBOX LOCK OFF	1	SF.	31	5146824-00/7	SCREW	1	ALT USE 5147665-00/4
	5136704-01/1	LABEL SWITCHBOX LOCK OFF	1	I.O/S.	32	5116768-00/2	SCREEN	1	
	5147900-01/2	LABEL SWITCHBOX LOCK OFF	1	S.	33	5147426-07/5	GRASSBOX C/W SCREEN	1	
					34	5106191-04/1	HOOD 30cm	1	
11	5136621-00/9	LEAD TERMINAL C/W PLUG	1	GB.	35	5146824-00/7	SCREW	2	ALT USE 5147665-00/4
	5147000-02/9	LEAD TERMINAL	1	A.N.DK.F.B.NL.I.S.	36	5146866-00/8	SCREW M5x16LG CSK	4	
	5147000-04/5	LEAD TERMINAL	1	CH.SF.	37	5137456-00/9	PIN RETAINING	2	
	5147001-07/6	LEAD TERMINAL 15.24M x 1MM	1	O/S.E.P.	38	5126538-01/5	SPRING RETAINER	1	
12	5136662-00/3	SOCKET FEMALE 10 amp	1	GB.	39	5137431-00/2	PULLEY ASSEMBLY	1	
13	5126700-00/3	HANDLE UPPER PLASTIC COATED	1		40	5136701-02/5	BELT "POLY V"	1	
14	5140863-01/9	CABLE CLIP LARGE	1		41	5116770-00/8	IMPELLER	1	
15	5147001-39/9	LEAD INTERNAL	1	GB.	42	5136668-01/8	BLADE SPACER PEGGED	3	
	5147001-35/7	LEAD INTERNAL	1	A.N.DK.F.B.NL.I.O/S.S.	43	5126439-00/8	BLADE 30cm	1	
	5146475-08/1	LEAD TERMINAL C/W PLUG	1	SF.	44	5140516-00/5	ANTI FRICTION WASHER (PTFE)	1	
	5147001-36/5	LEAD INTERNAL	1	CH.	45	5136242-01/2	BLADE BOLT	1	
16	5140690-00/8	KNOB WING	2		46	5130127-00/3	SPANNER	1	
17	5140266-00/7	WASHER	2		47	5136182-01/0	LEVER SWITCH	1	
18	5140607-00/2	BOLT HANDLE 1/4 UNCx45LG	2		48	5130406-01/9	SEAL CONE	1	
19	5136692-00/0	CABLE CLAMP	1		49	5141605-00/5	SCREW	4	
20	5146824-00/7	SCREW	2	ALT USE 5147665-00/4	50	5116495-00/2	SWITCHBOX COVER	1	
21	5146469-01/9	WARNING DISC ASSY ORANGE	1		51	5146672-00/0	SCREW GKN POLYIMATE	2	
22	5126529-01/4	MOTOR 240 VOLT C/W PULLEY	1		52	5146672-00/0	SCREW GKN POLYIMATE	2	
	5126529-02/2	MOTOR 220 VOLT C/W PULLEY	1		53	5116641-03/5	SWITCHBOX BODY 18mm	1	
23	5147150-00/6	TIE WRAP	1		54	5141584-01/0	SLEEVE PROTECTION	1	
24	7241219-61/2	SCREW	1		55	5136674-01/6	SWITCH ON/OFF LOCK OFF	1	KOPP 2412.04 OR 2412.13
25	7352136-51/4	LOCKWASHER	1			5137538-03/8	SWITCH ON/OFF LOCK OFF	1	LATER PRODUCED PRODUCTS
26	113721-00/5	CLIP	1		56	5146616-00/7	CLAMP CABLE	1	
27	113030-01/9	SUPPRESSOR 0.15 MF	1		57	5146672-00/0	SCREW GKN POLYIMATE	2	
					58	5126734-00/2	DISC ASSY 30 CM	1	} NOT ILLUSTRATED
					59	5148257-02/4	CUTTER PLASTIC LONG LIFE	2	

PRODUCT VARIANT

9635165-25 GB.
9635166-03 A.
9635166-06 N.DK.

9635166-07 SF.
9635166-08 F.B.NL.

9635166-11 I.
9635166-16 O/S.

9635166-21 S.
9635166-22 CH.