

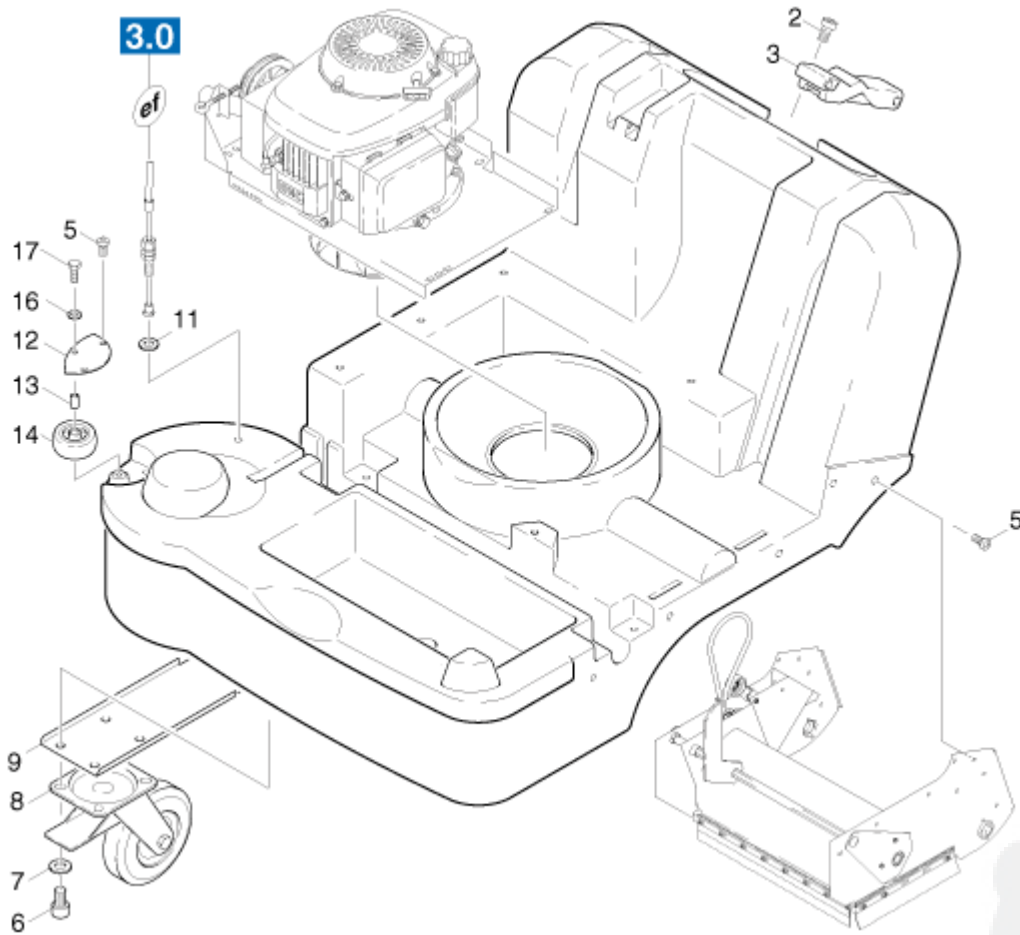
onderdelenlijst en tekening

5.958-205 /

KSM 750 B /

1.0 BASE FRAME

200740



2	6.303-155.0	SCREW	4
3	6.375-213.0	LOCK	1
5	6.303-174.0	SCREW	10
6	7.306-041.0	CHEESE HEAD SCREW	4
7	7.312-004.0	WASHER	4
8	6.435-270.0	CASTOR	1
9	5.047-356.0	PLATE	1
11	7.312-276.0	WASHER	1
12	5.001-849.0	PLATE	1
13	5.029-334.0	PIPE	1
14	6.435-373.0	WHEEL	1
16	7.312-003.0	WASHER	1
17	7.304-386.0	HEXAGONAL HEAD SCREW	1

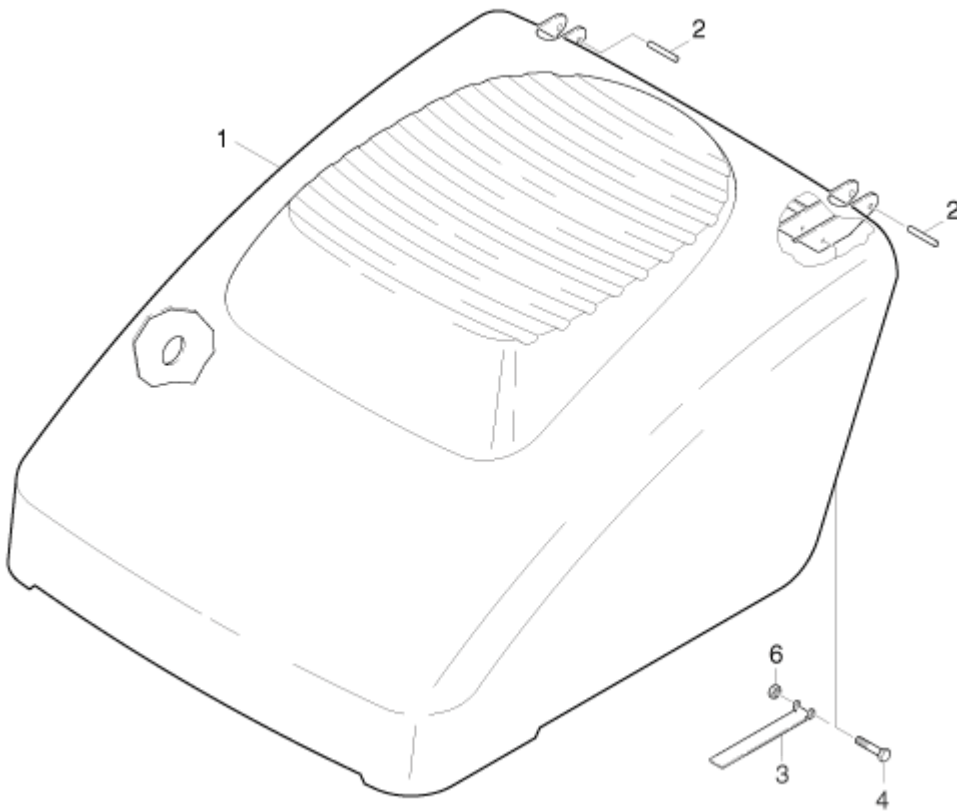
onderdelenlijst en tekening

5.958-205 /

KSM 750 B /

2.0 COVER

200740



1	5.067-204.0 COVER	1
2	5.105-214.0 AXLE	2
3	5.048-498.0 PLATE	1
4	7.306-064.0 SCREW	1
6	7.311-516.0 HEXAGON NUT	1

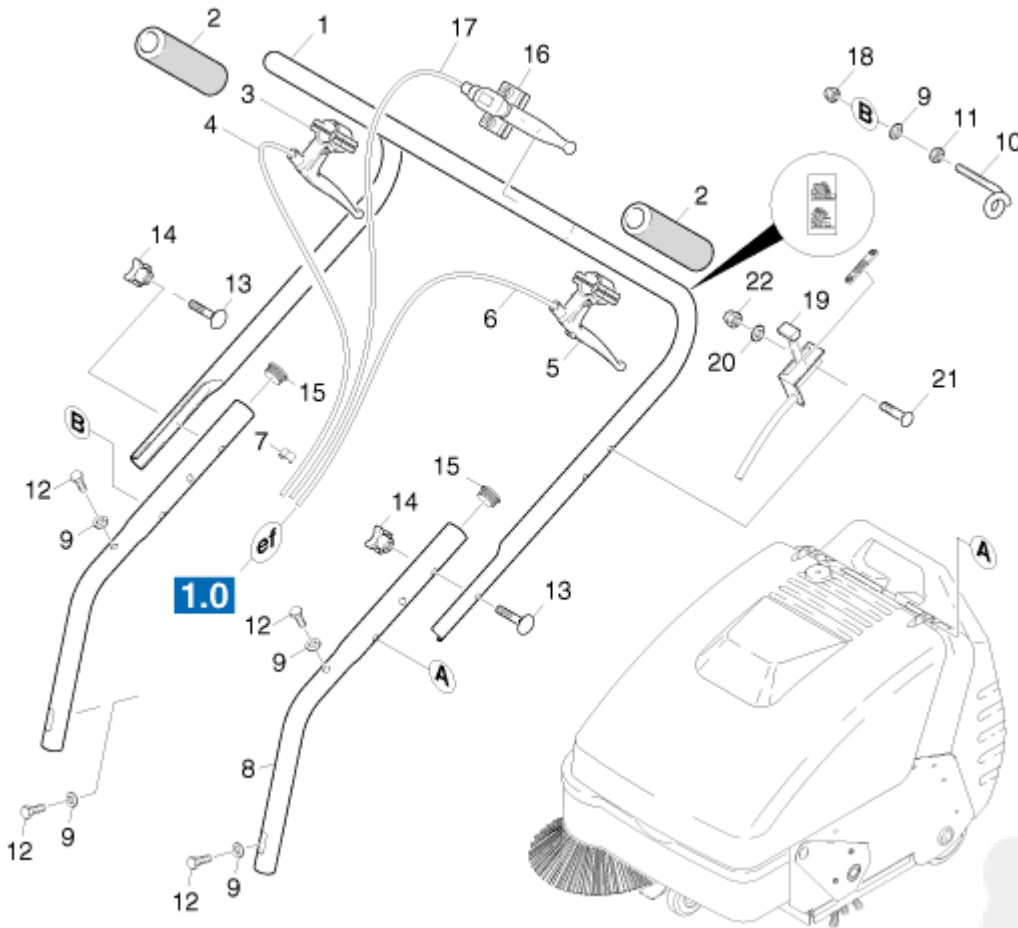
onderdelenlijst en tekening

5.958-205 /

KSM 750 B /

3.0 SHEARING SHACKLE

200740



1	5.034-640.0	SHEARING SHACKLE	1
2	6.321-135.0	CELLULAR HANDLE	2
3	6.437-467.0	OPERATING LEVER	1
4	6.431-196.0	BOWDEN WIRE	1
5	6.437-468.0	OPERATING LEVER	1
6	6.431-198.0	BOWDEN WIRE	1
7	6.647-696.0	CABLE CLAMP	2
8	5.029-341.0	PIPE	2
9	7.312-003.0	WASHER	5
10	6.491-556.0	HOOK	1
11	7.311-003.0	HEXAGON NUT	1
12	7.304-387.0	HEXAGONAL HEAD SCREW	4
13	7.303-190.0	SAUCER-HEAD SCREW	2
14	6.310-023.0	STAR HANDLE	2
15	6.368-173.0	DRAIN PLUG	2
16	6.431-195.0	BOWDEN WIRE	1

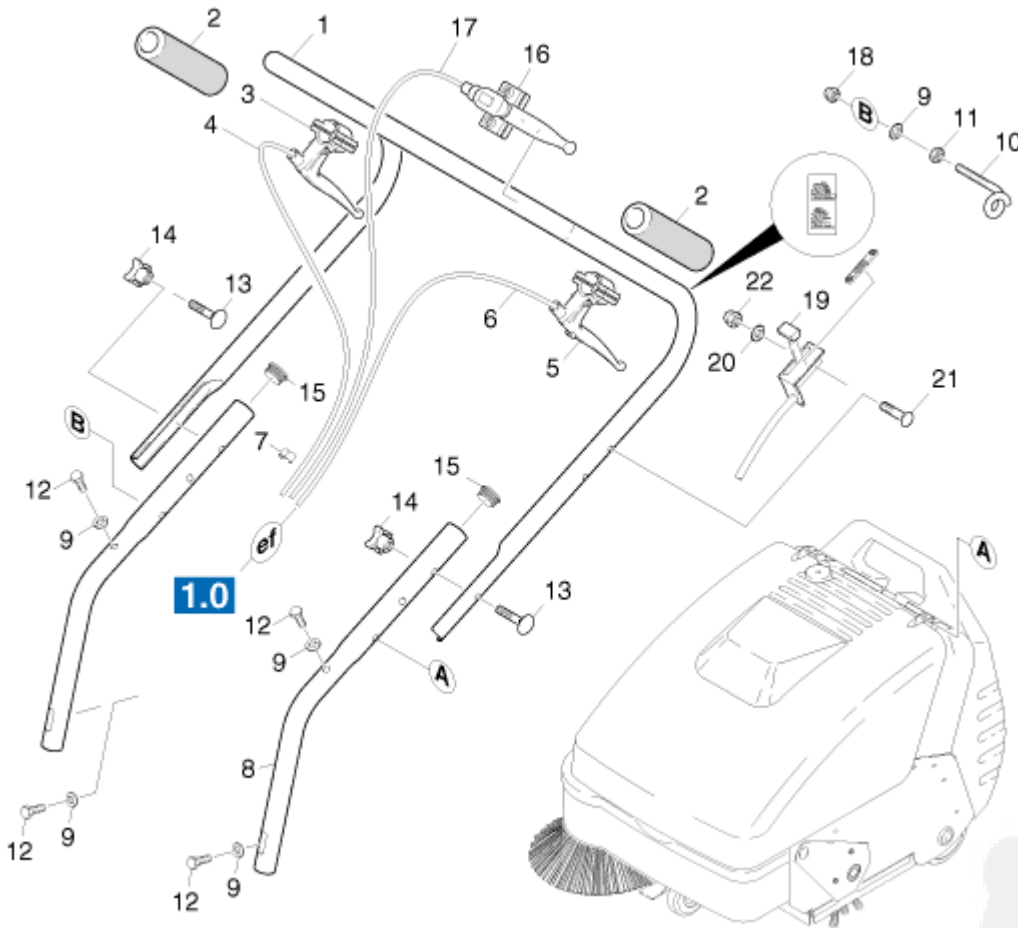
onderdelenlijst en tekening

5.958-205 /

KSM 750 B /

3.0 SHEARING SHACKLE

200740



14	6.310-023.0	STAR HANDLE	2
15	6.368-173.0	DRAIN PLUG	2
16	6.431-195.0	BOWDEN WIRE	1
17	6.431-123.0	BOWDEN WIRE	1
18	7.311-380.0	CAP NUT	1
19	6.906-261.0	WIRE	1
20	7.312-278.0	WASHER	2
21	7.306-185.0	SCREW	2
22	7.311-385.0	CAP NUT	2

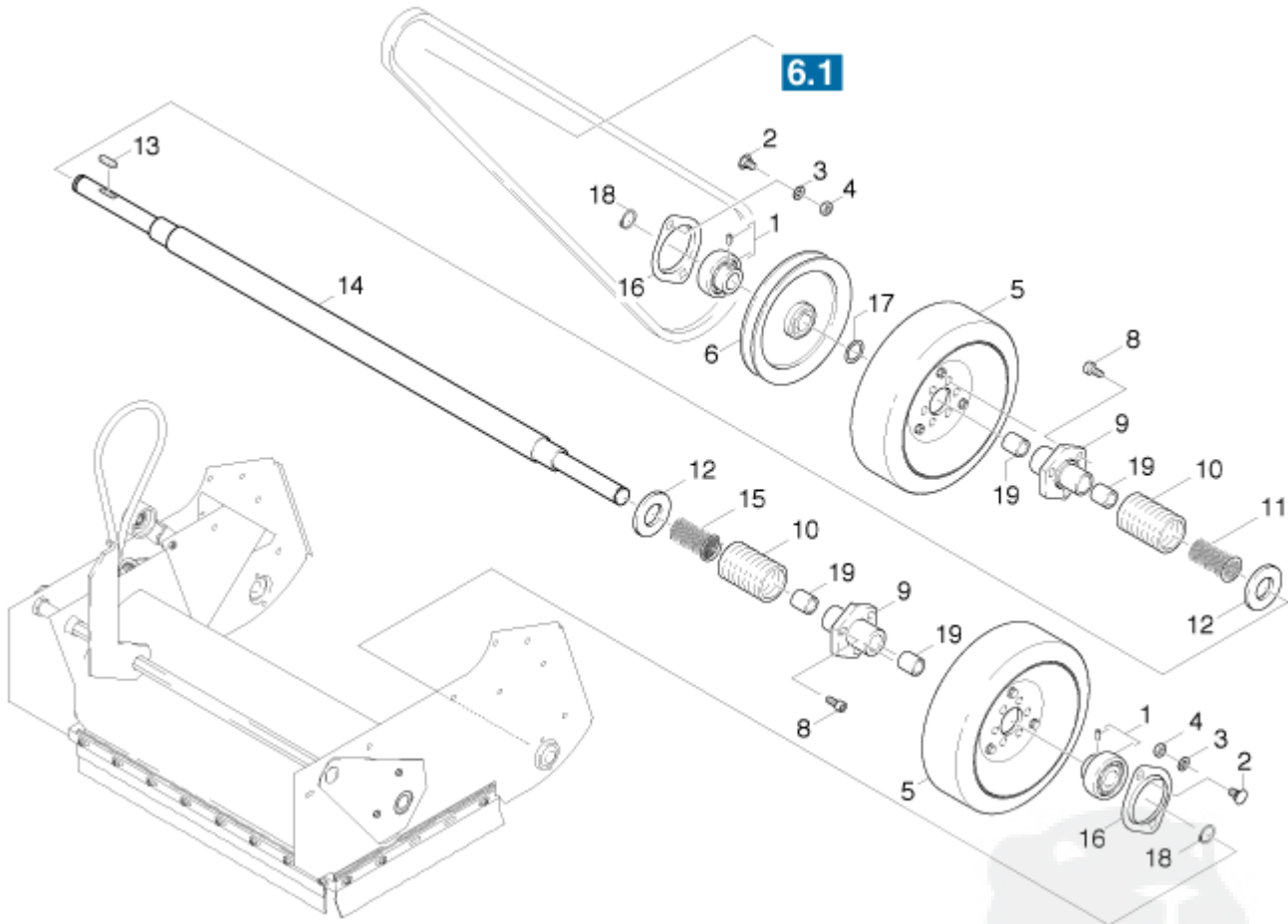
onderdelenlijst en tekening

5.958-205

KSM 750 B

4.0 GEAR

200740



1	6.401-270.0 BEARING	2
2	7.303-046.0 SCREW	4
3	7.312-003.0 WASHER	4
4	7.311-003.0 HEXAGON NUT	4
5	6.435-268.0 WHEEL	2
6	5.625-277.0 PULLEY	1
8	6.303-193.0 CHEESE HEAD SCREW	6
9	5.515-100.0 WHEEL HUB	2
10	5.442-880.0 HOSE	2
11	5.332-378.0 HELICAL SPRING	1
12	7.312-013.0 WASHER	2
13	7.318-003.0 SPRING	1
14	5.105-259.0 AXLE	1
15	5.332-377.0 HELICAL SPRING	1
16	6.401-271.0 FLANGE HOUSING	2
17	7.312-217.0 WASHER	1

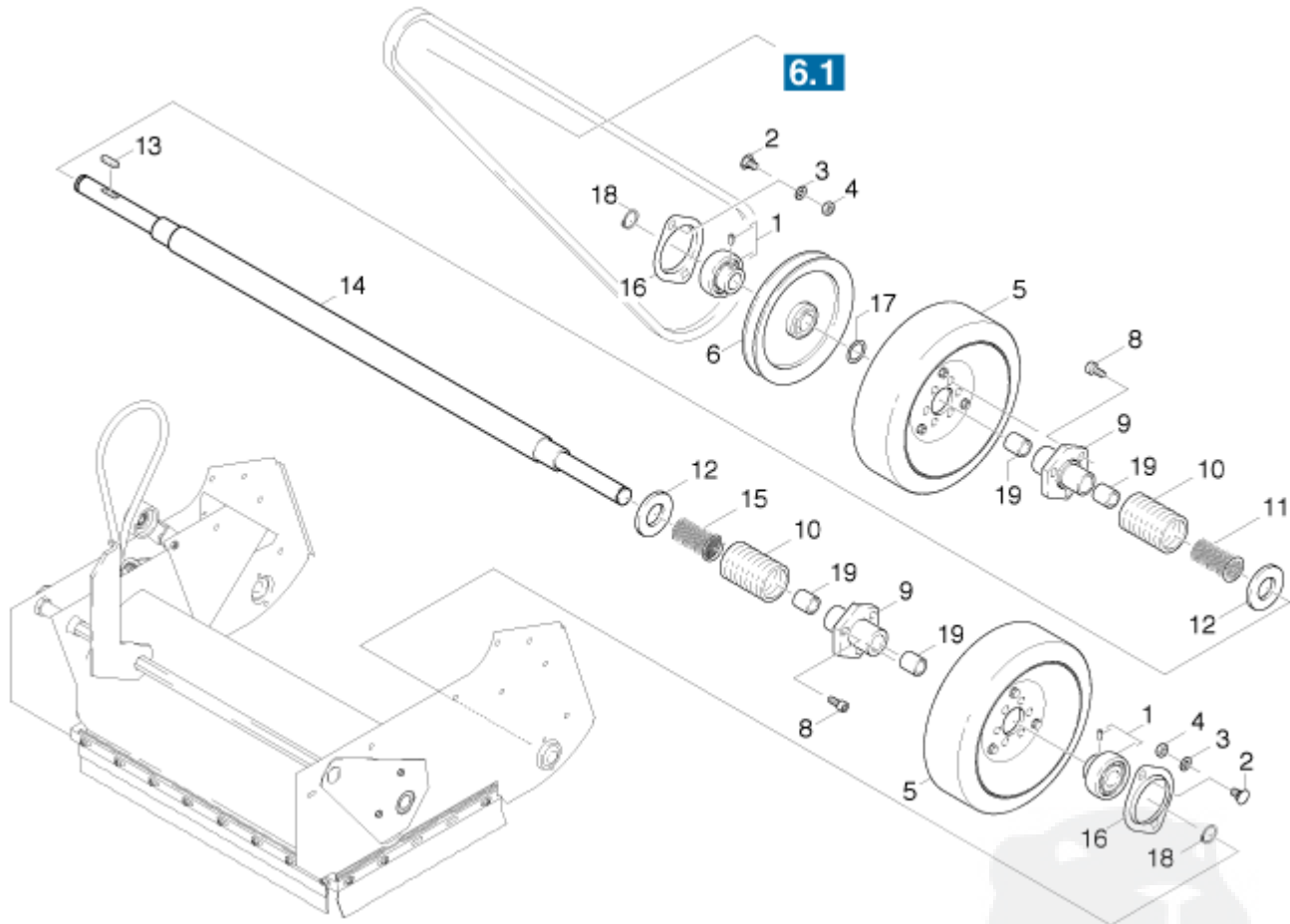
onderdelenlijst en tekening

5.958-205 /

KSM 750 B /

4.0 GEAR

200740



15	5.332-377.0	HELICAL SPRING	1
16	6.401-271.0	FLANGE HOUSING	2
17	7.343-217.0	WASHER	1
18	7.343-306.0	LOCK WASHER	2
19	6.437-480.0	BEARING BUSH	4

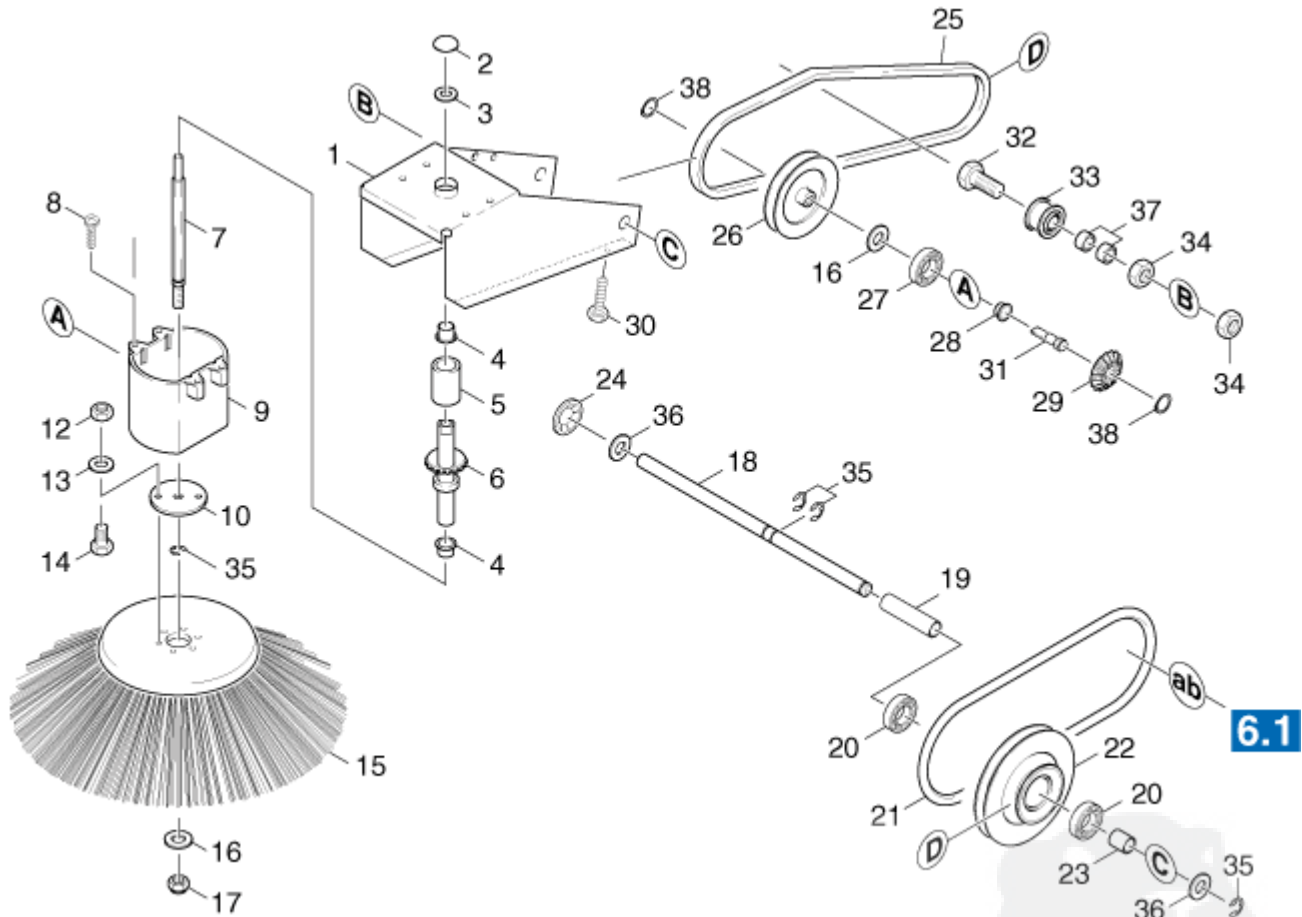
onderdelenlijst en tekening

5.958-205 /

KSM 750 B /

5.0 GEAR

200740



1	5.046-858.0	PLATE	1
2	6.343-129.0	LOCK WASHER	1
3	7.312-292.0	WASHER	1
4	6.437-484.0	BEARING BUSH	2
5	5.110-591.0	SLEEVE	1
6	5.100-109.0	HOLLOW SHAFT	1
7	5.105-179.0	AXLE	1
8	6.303-155.0	SCREW	4
9	5.060-553.0	HOUSING	1
10	5.115-509.0	WASHER	1
12	7.311-003.0	HEXAGON NUT	2
13	7.312-003.0	WASHER	2
14	7.306-090.0	SCREW	2
15	6.951-073.0	BROOM	1
16	7.312-004.0	WASHER	2
17	7.311-003.0	HEXAGON NUT	1

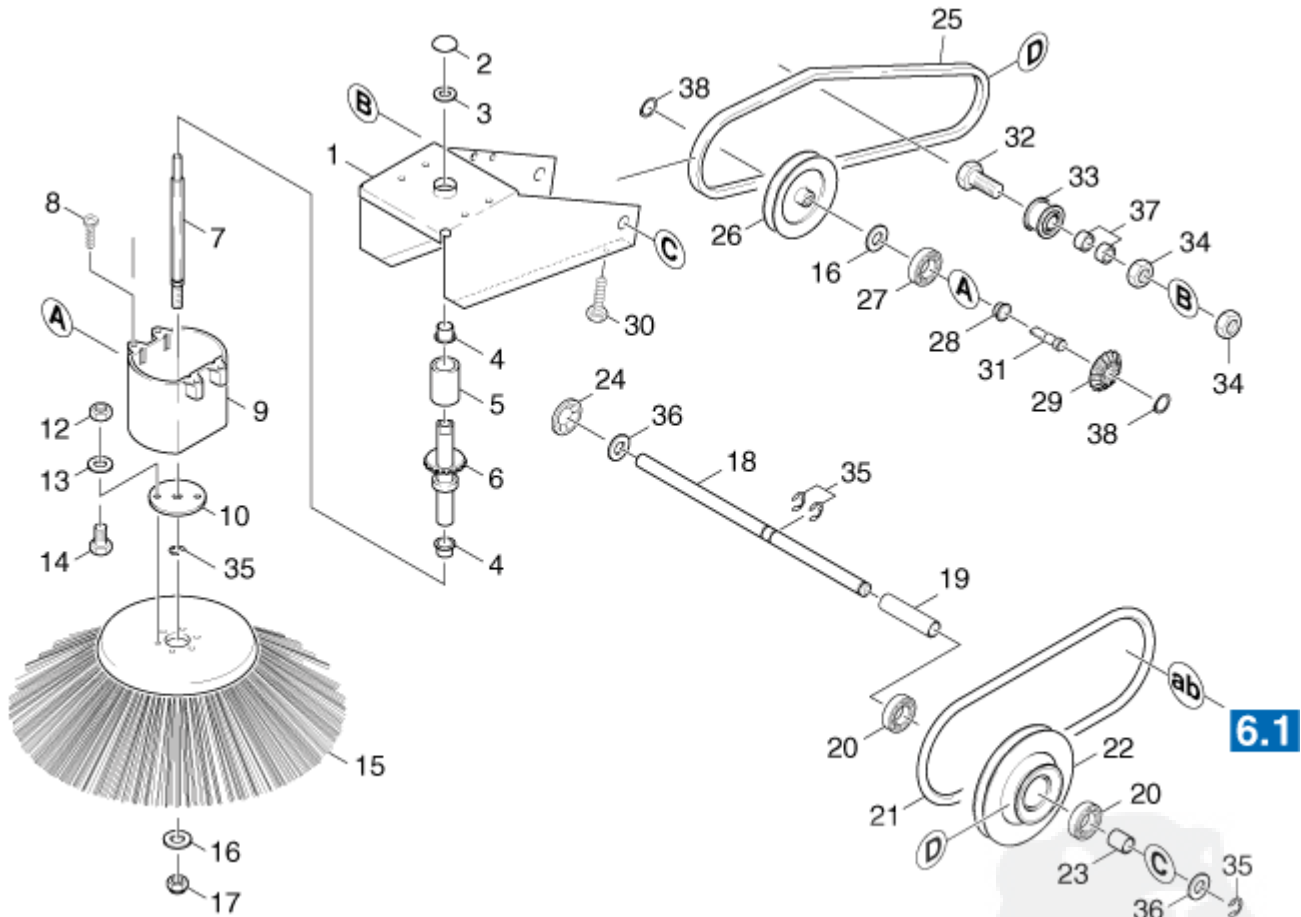
onderdelenlijst en tekening

5.958-205 /

KSM 750 B /

5.0 GEAR

200740



15	6.951-073.0	BROOM	1
16	7.312-004.0	WASHER	2
17	7.311-427.0	HEXAGON NUT	1
18	5.105-211.0	AXLE	1
19	5.110-581.0	SLEEVE	1
20	7.401-111.0	BALL BEARING	2
21	6.348-346.0	BELT	1
22	5.625-274.0	PULLEY	1
23	5.110-580.0	SLEEVE	1
24	6.343-180.0	QUICK-FASTENER	1
25	6.348-285.0	LARGE V-BELT	1
26	5.625-332.0	PULLEY	1
27	7.401-174.0	BALL BEARING	1
28	6.437-485.0	BEARING BUSH	1
29	5.352-060.0	PINION	1
30	7.303-261.0	SHEET METAL SCREW	1

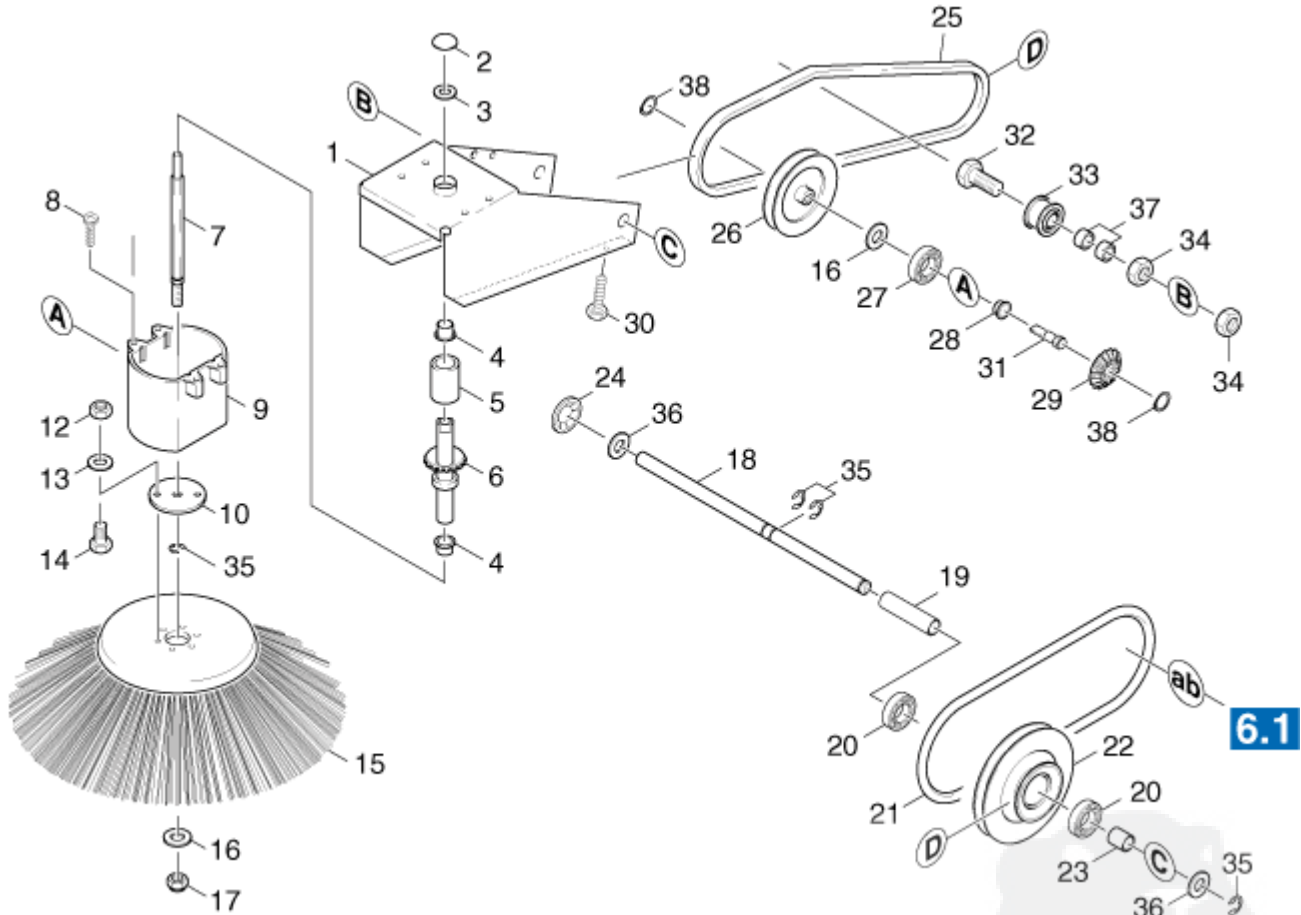
onderdelenlijst en tekening

5.958-205 /

KSM 750 B /

5.0 GEAR

200740



28	6.437-485.0	BEARING BUSH	1
29	5.352-060.0	PINION	1
30	7.303-361.0	SHEET METAL SCREW	1
31	5.100-186.0	SHAFT	1
32	7.306-049.0	CHEESE HEAD SCREW	1
33	6.435-274.0	DEFLECTION PULLEY	1
34	7.311-004.0	HEXAGON NUT	2
35	7.343-205.0	LOCK WASHER	4
36	7.312-008.0	WASHER	2
37	6.347-094.0	SPACER SLEEVE	2
38	7.343-014.0	SPRING CLIP	2

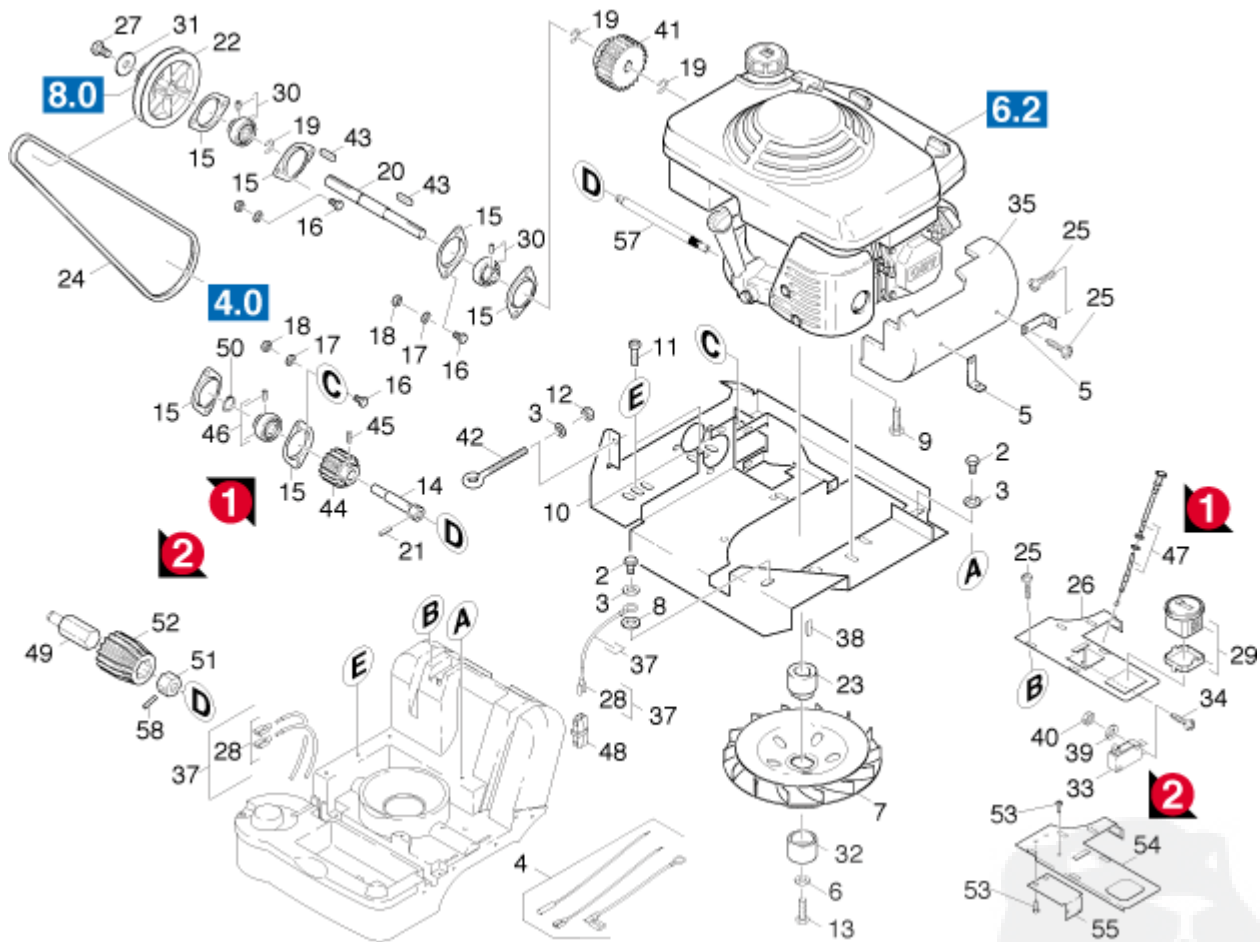
onderdelenlijst en tekening

5.958-205 /

KSM 750 B

/6.1 MOTOR-FITTING POSITION

200740



2	7.304-394.0	HEXAGONAL HEAD SCREW	2
3	7.312-004.0	WASHER	3
4	6.647-962.0	CABLE SET	2
5	5.017-103.0	ANGLE	2
6	7.312-290.0	WASHER	1
7	5.600-057.0	BLOWER WHEEL	1
8	7.312-166.0	LOCK WASHER	1
9	6.304-040.0	HEXAGONAL HEAD SCREW	5
10	4.038-622.0	PLATE	1
11	6.303-174.0	SCREW	3
12	7.311-427.0	HEXAGON NUT	1
13	7.304-025.0	HEXAGONAL HEAD SCREW	1
14	5.100-238.0	SHAFT	1
VERSION 1 /			
15	6.401-271.0	FLANGE HOUSING	6
16	7.306-090.0	SCREW	6

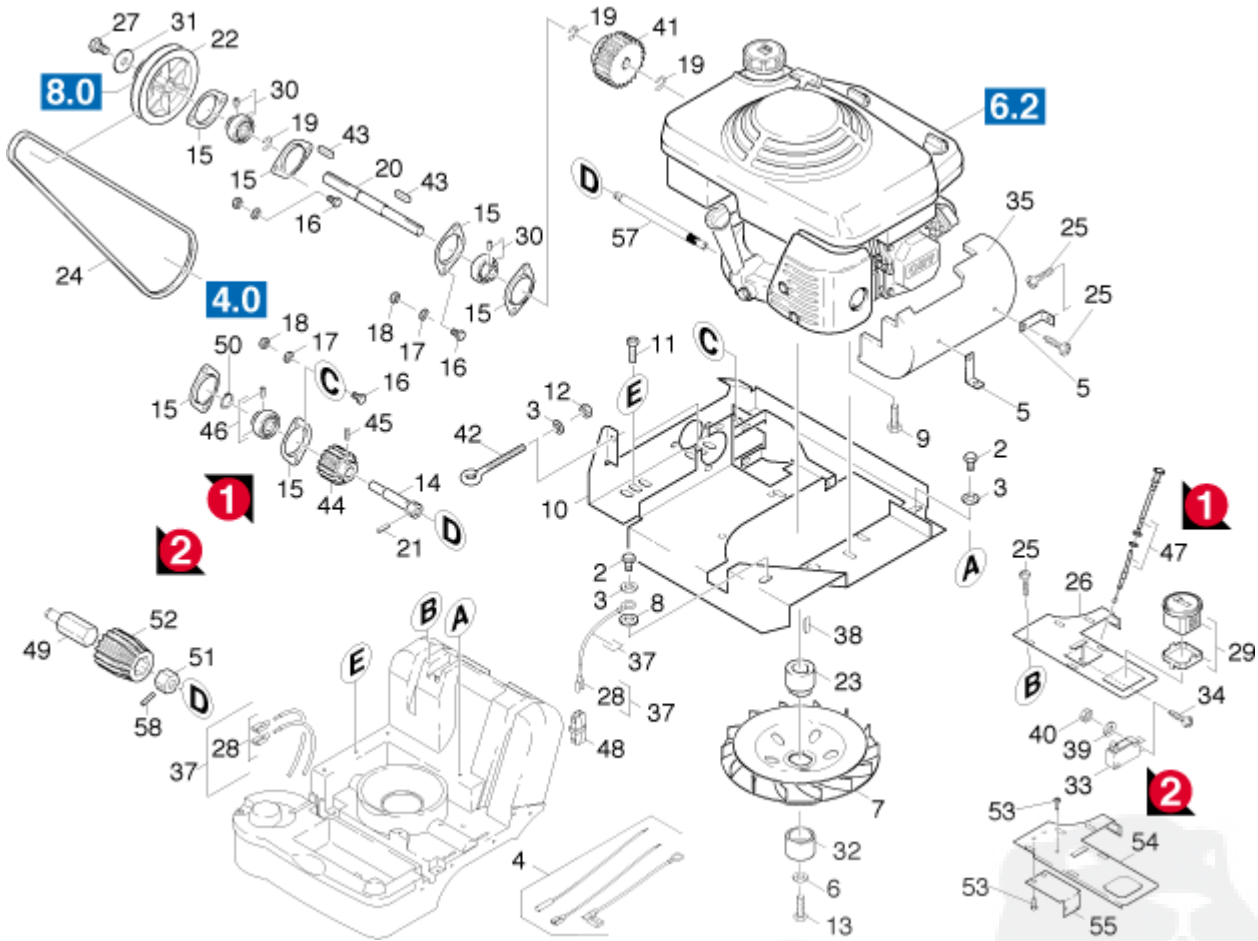
onderdelenlijst en tekening

5.958-205 /

KSM 750 B

/6.1 MOTOR-FITTING POSITION

200740



VERSION 1 /

15	6.401-271.0	FLANGE HOUSING	6
16	7.306-090.0	SCREW	6
17	7.312-003.0	WASHER	6
18	7.311-003.0	HEXAGON NUT	6
19	7.343-306.0	LOCK WASHER	3
20	5.100-239.0	SHAFT	1
21	7.314-013.0	GROOVED PIN	1
22	5.625-314.0	PULLEY	1
23	5.110-676.0	SLEEVE	1
24	6.348-282.0	LARGE V-BELT	1
25	6.303-155.0	SCREW	8
26	5.048-360.0	PLATE	1
/ => 15980			
27	7.304-372.0	HEXAGONAL HEAD SCREW	1

onderdelenlijst en tekening

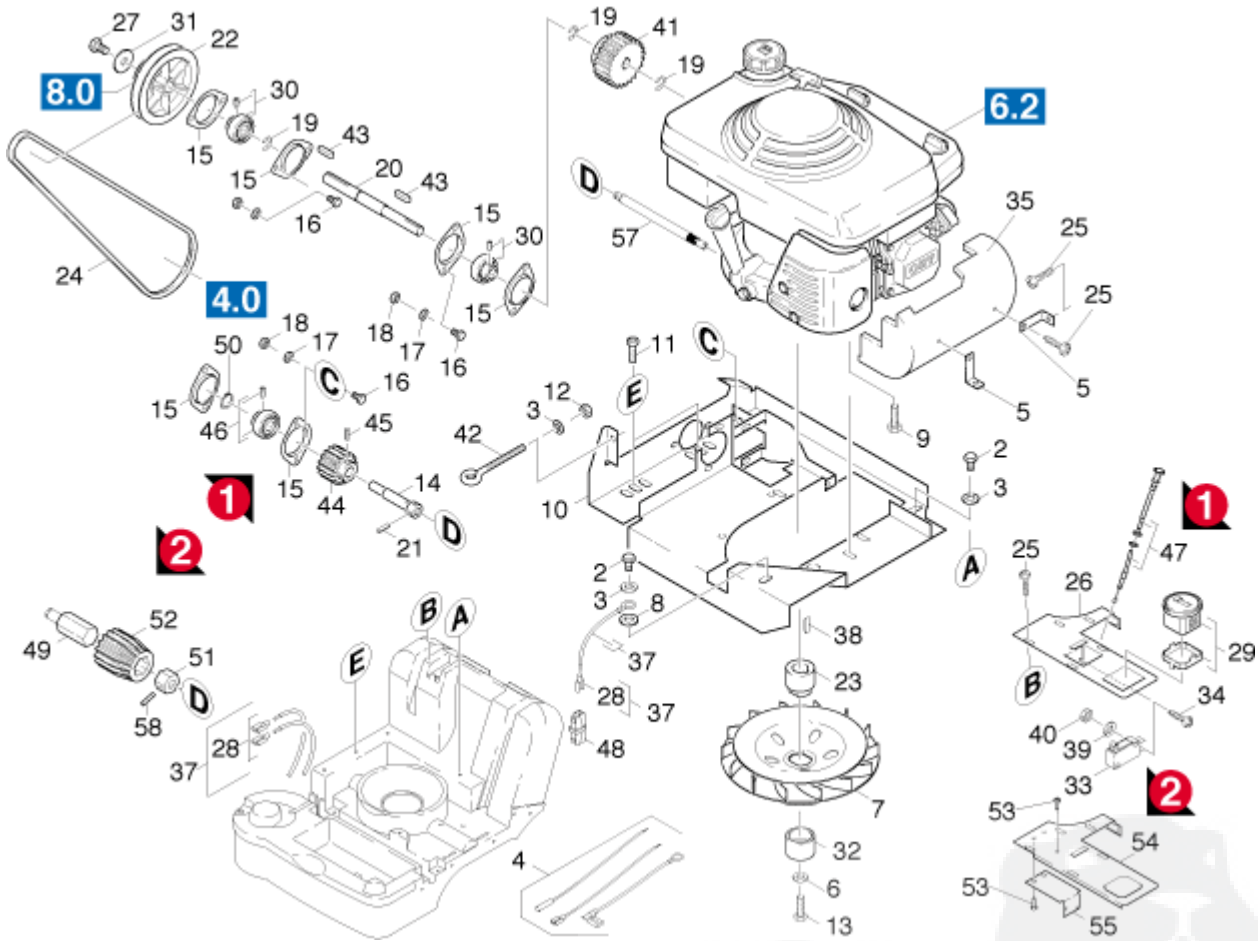
5.958-205

/

KSM 750 B

/6.1 MOTOR-FITTING POSITION

200740



26	5.048-360.0	PLATE	1
	/=>	15980	
27	7.304-372.0	HEXAGONAL HEAD SCREW	1
28	6.641-238.0	PLUG SLEEVE	2
29	6.681-084.0	HOUR METRE	1
30	6.401-270.0	BEARING	2
31	5.115-233.0	WASHER	1
32	5.110-677.0	SLEEVE	1
33	6.631-788.0	TOGGLE SWITCH	1
34	7.303-501.0	SELF-TAPPING SCREW	2
35	5.031-552.0	AIR CIRCULATION	1
37	4.820-978.0	CABLE SET	1
38	7.318-203.0	CURVED WASHER	1
39	7.312-043.0	WASHER	2
40	7.311-000.0	HEXAGON NUT	2
41	6.348-317.0	GEAR WHEEL	1

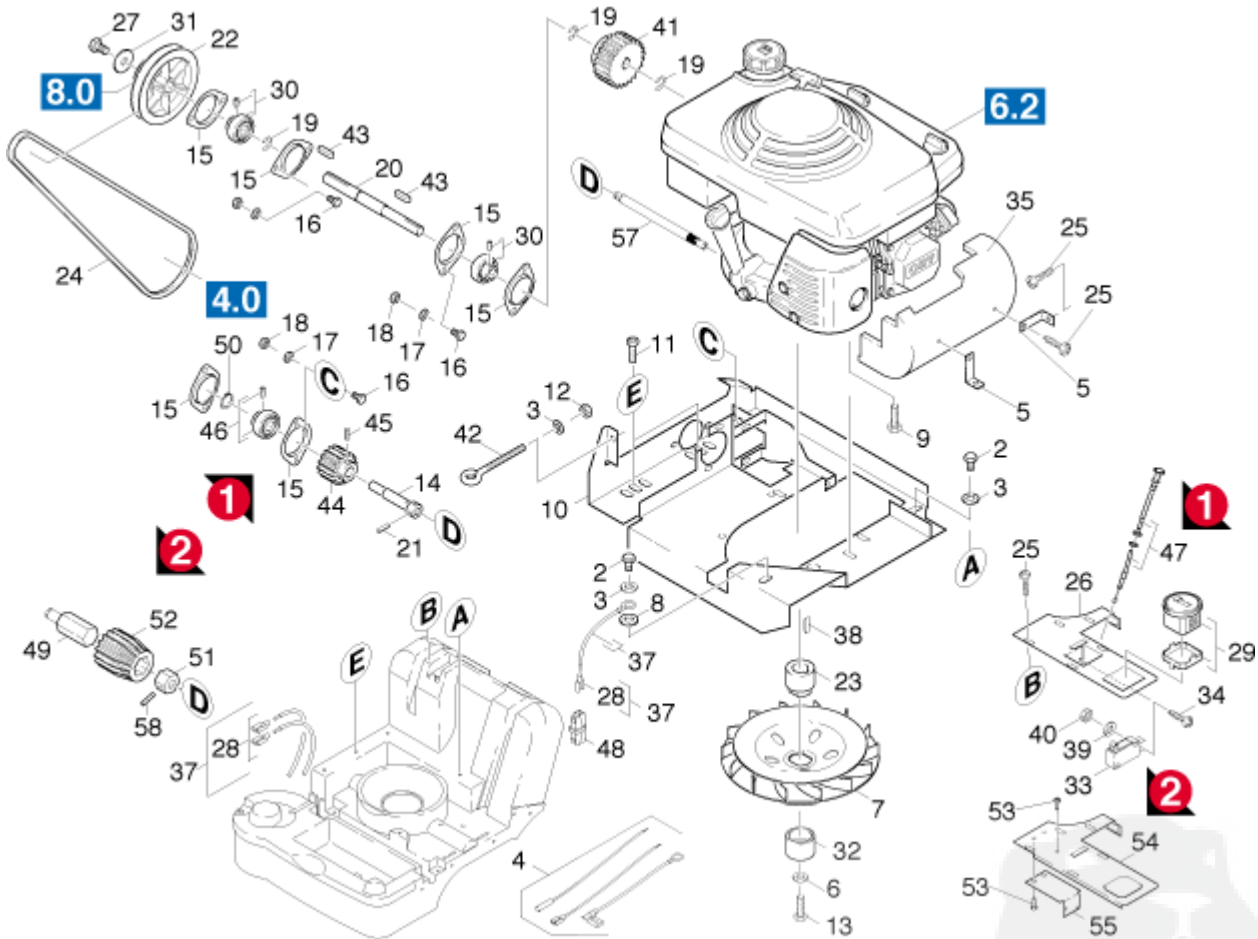
onderdelenlijst en tekening

5.958-205 /

KSM 750 B

/6.1 MOTOR-FITTING POSITION

200740



39	7.312-043.0	WASHER	2
40	7.311-000.0	HEXAGON NUT	2
41	6.348-317.0	GEAR WHEEL	1
42	6.373-659.0	EAR	1
43	7.318-079.0	SPRING	2
44	6.348-318.0	PINION	1
	VERSION 1 /		
45	7.314-009.0	GROOVED PIN	1
	VERSION 1 /		
46	6.401-298.0	BEARING	1
47	6.491-603.0	CHOKE	1
48	6.643-613.0	LIGHT CLAMP	1
49	5.105-301.0	AXLE	1
	VERSION 2 /		
50	7.343-105.0	SPRING CLIP	1
51	5.474-027.0	CARRIER	1
	VERSION 2 /		

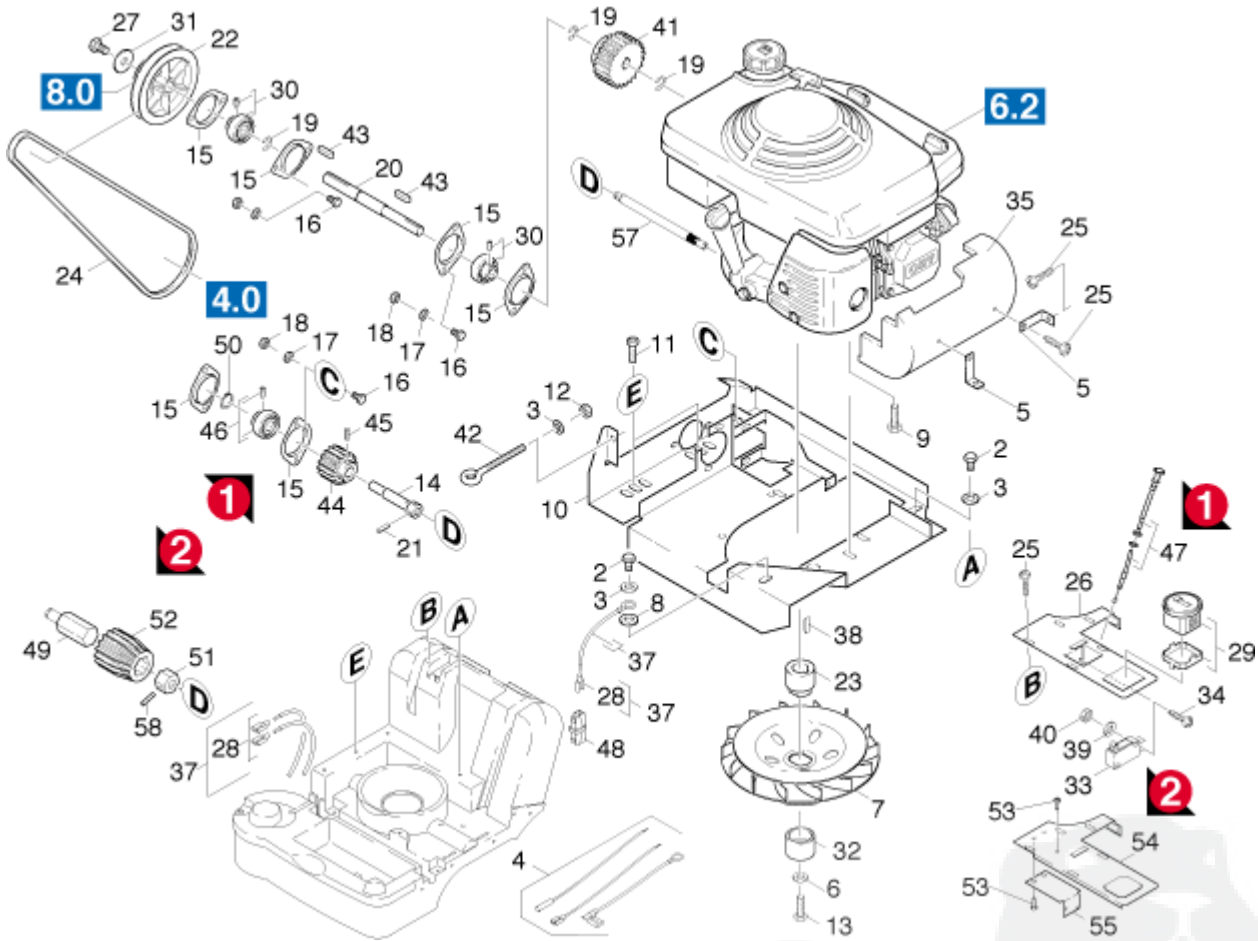
onderdelenlijst en tekening

5.958-205 /

KSM 750 B

/6.1 MOTOR-FITTING POSITION

200740



VERSION 2 /			
50	7.343-105.0	SPRING CLIP	1
51	5.474-027.0	CARRIER	1
VERSION 2 /			
52	6.348-340.0	PINION	1
VERSION 2 /			
53	7.303-160.0	SAUCER-HEAD SCREW	6
VERSION 2 /			
54	5.048-827.0	PLATE	1
15981 =>			
55	5.048-828.0	PLATE	1
15981 =>			
57	6.491-694.0	SHAFT	1
58	7.314-090.0	STRAIGHT PIN	1
VERSION 2 /			

onderdelenlijst en tekening

5.958-205

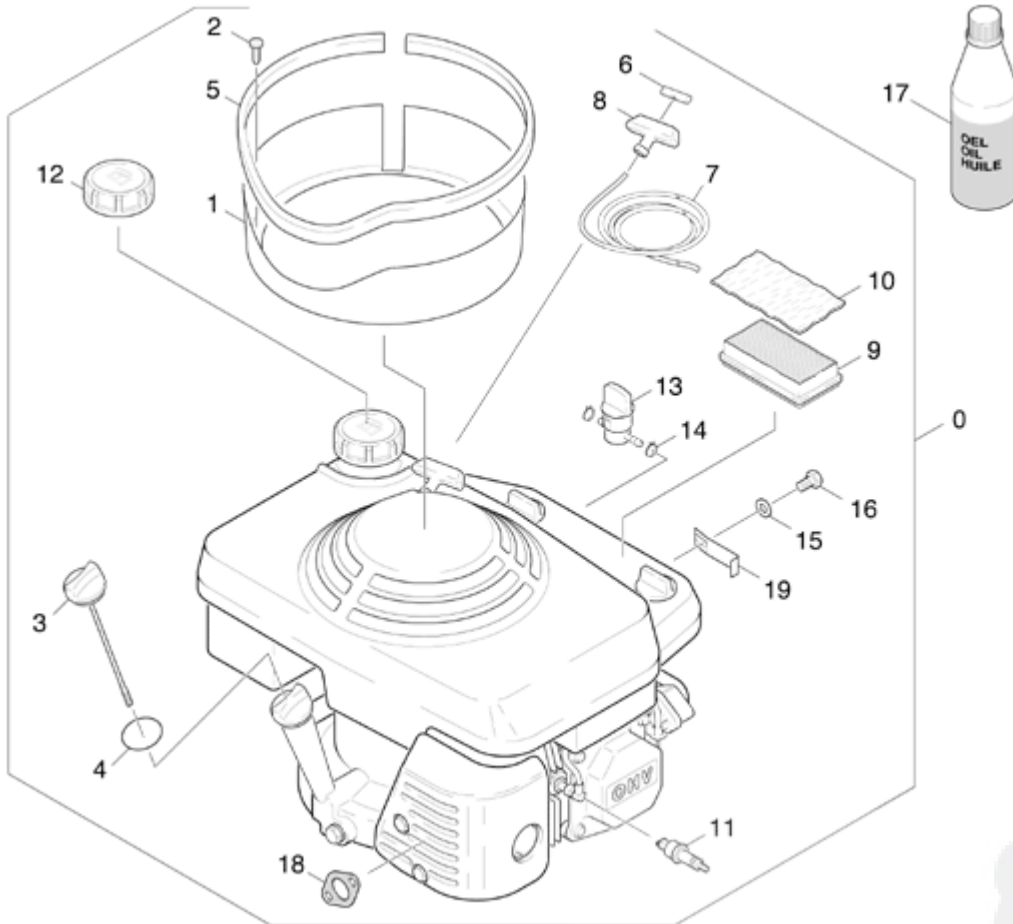
/

KSM 750 B

/

6.2 MOTOR-PIECE PARTS

200740



0	4.623-380.0	GASOLINE ENGINE	1
1	5.031-476.0	AIR CIRCULATION	1
2	7.303-382.0	SHEET METAL SCREW	2
3	6.491-460.0	OIL DIP ROD	1
4	6.491-115.0	GASKET	1
5	6.368-089.0	SHEATING	1
6	6.491-468.0	HANDLE	1
7	6.491-612.0	STARTER ROPE	1
8	6.491-466.0	HANDLE	1
9	6.491-462.0	AIR FILTER	1
10	6.491-463.0	AIR FILTER FLEECE	1
11	6.954-006.0	IGNITION PLUG	1
12	6.491-461.0	CAP OF A TANK	1
13	6.970-156.0	FUEL COCK	1
14	6.389-768.0	HOSE BAND CLIP	3
15	7.312.002.0	WASHER	1

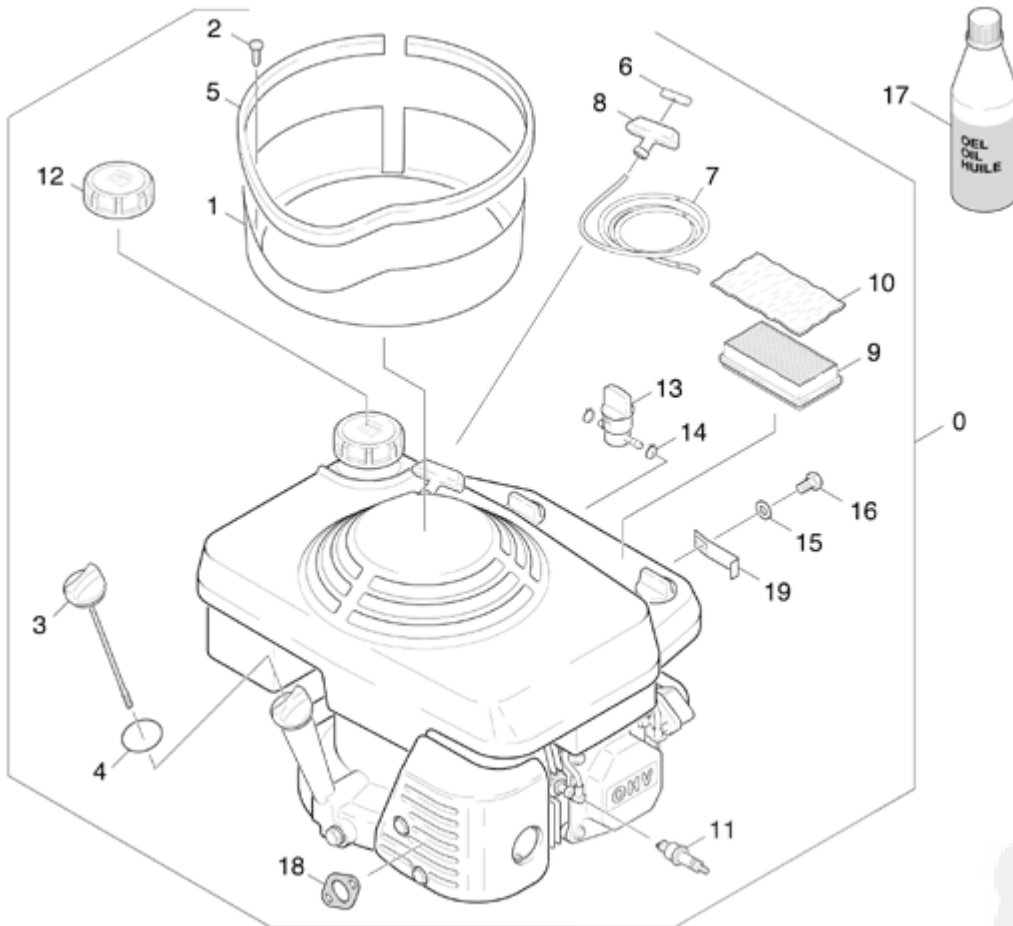
onderdelenlijst en tekening

5.958-205 /

KSM 750 B /

6.2 MOTOR-PIECE PARTS

200740



13	6.970-156.0	FUEL COCK	1
14	6.389-768.0	HOSE BAND CLIP	3
15	7.312-003.0	WASHER	1
16	7.304-372.0	HEXAGONAL HEAD SCREW	1
17	6.288-050.0	ENGINE OIL	1
18	6.954-017.0	SEAL	1
19	5.048-062.0	PLATE	1

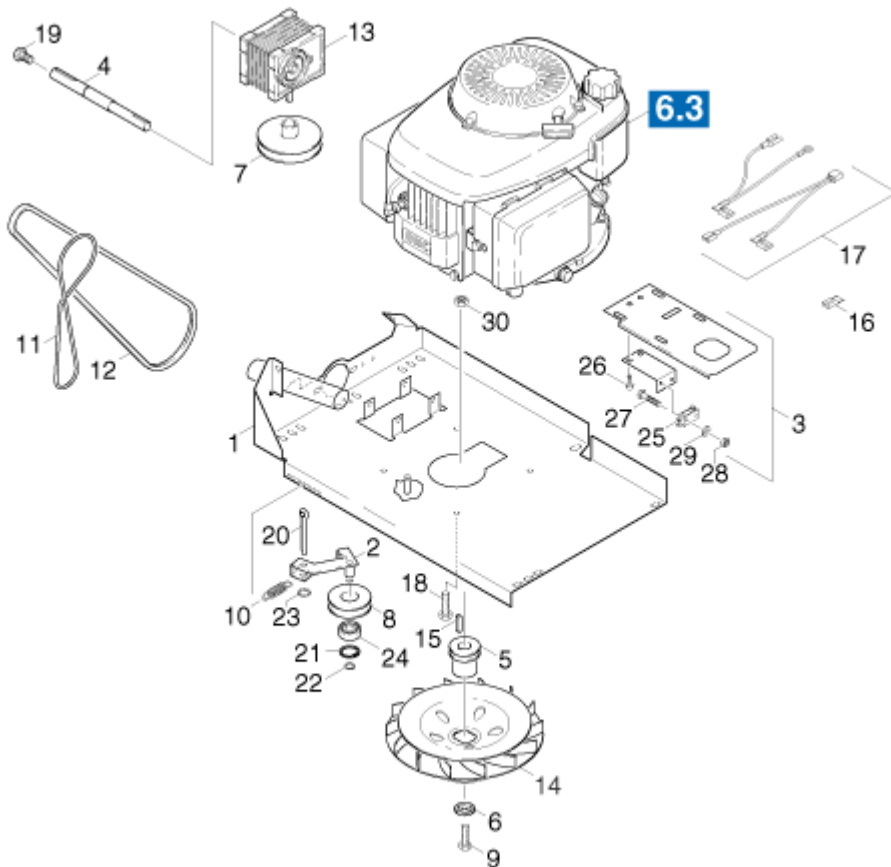
onderdelenlijst en tekening

5.958-205 /

KSM 750 B

/6.3 MOTOR-FITTING POSITION

200740



1	4.038-950.0	PLATE	1
2	4.622-011.0	BELT STRETCHER	1
3	5.048-828.0	PLATE	1
4	5.100-311.0	SHAFT	1
5	5.100-344.0	MOTOR SHAFT	1
6	5.110-817.0	SLEEVE	1
7	5.625-366.0	PULLEY	1
8	5.625-375.0	PULLEY	1
9	6.303-313.0	SCREW	1
10	6.330-173.0	EXTENSION SPRING	1
11	6.348-350.0	LARGE V-BELT	1
12	6.348-370.0	LARGE V-BELT	1
13	6.454-098.0	WORM GEARING	1
14	6.484-257.0	BLOWER WHEEL	1
15	6.491-207.0	SPRING	1
16	6.648-000.0	PLUG SLEEVE	1

onderdelenlijst en tekening

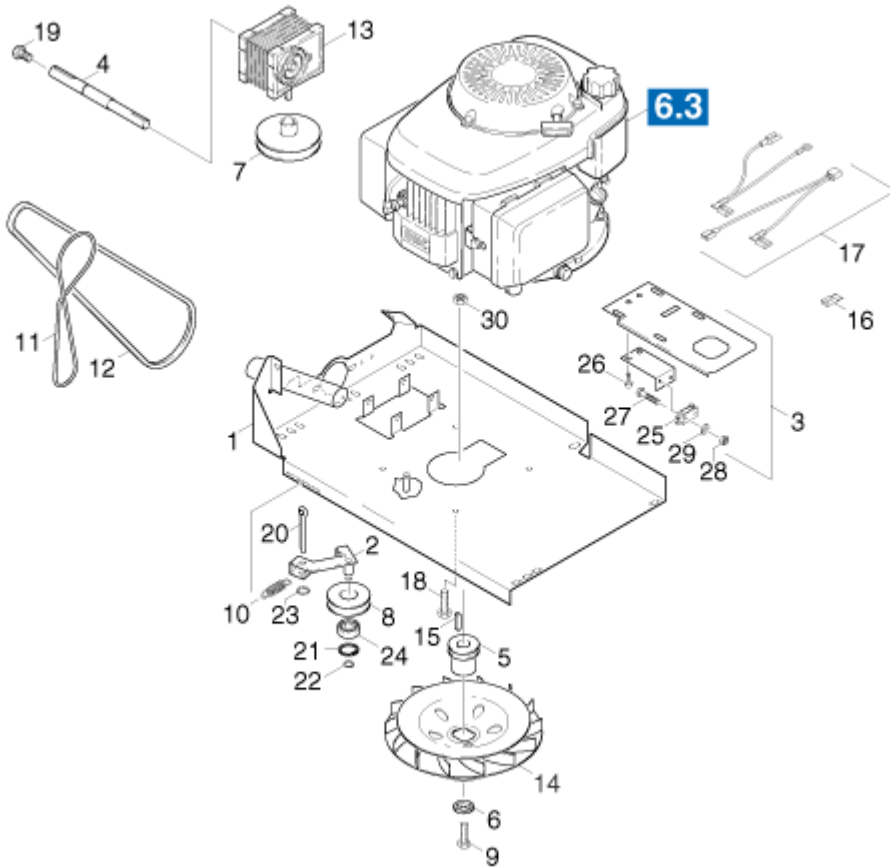
5.958-205

/

KSM 750 B

/6.3 MOTOR-FITTING POSITION

200740



14	6.484-257.0	BLOWER WHEEL	1
15	6.491-207.0	SPRING	1
16	6.648-009.0	PLUG SLEEVE	1
17	6.648-512.0	CABLE SET	1
18	7.304-406.0	HEXAGONAL HEAD SCREW	1
19	7.306-077.0	SCREW	1
20	7.316-342.0	COTTER	1
21	7.343-105.0	SPRING CLIP	1
22	7.343-127.0	SPRING CLIP	1
23	7.343-221.0	WASHER	1
24	7.401-149.0	BALL BEARING	1
25	6.631-788.0	TOGGLE SWITCH	1
26	7.303-030.0	SCREW	1
27	7.306-054.0	SCREW	1
28	7.311-000.0	HEXAGON NUT	1
29	7.312-020.0	WASHER	1

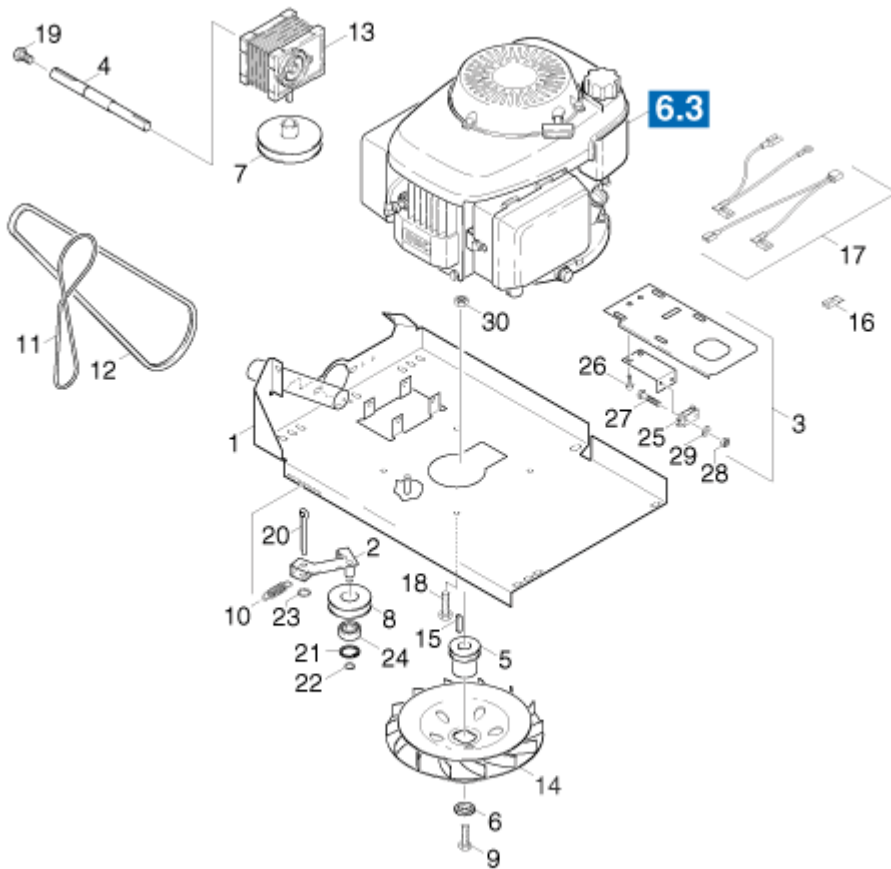
onderdelenlijst en tekening

5.958-205 /

KSM 750 B

/6.3 MOTOR-FITTING POSITION

200740



27	7.306-054.0	SCREW	1
28	7.311-000.0	HEXAGON NUT	1
29	7.312-030.0	WASHER	1
30	7.311-427.0	HEXAGON NUT	1

onderdelenlijst en tekening

5.958-205

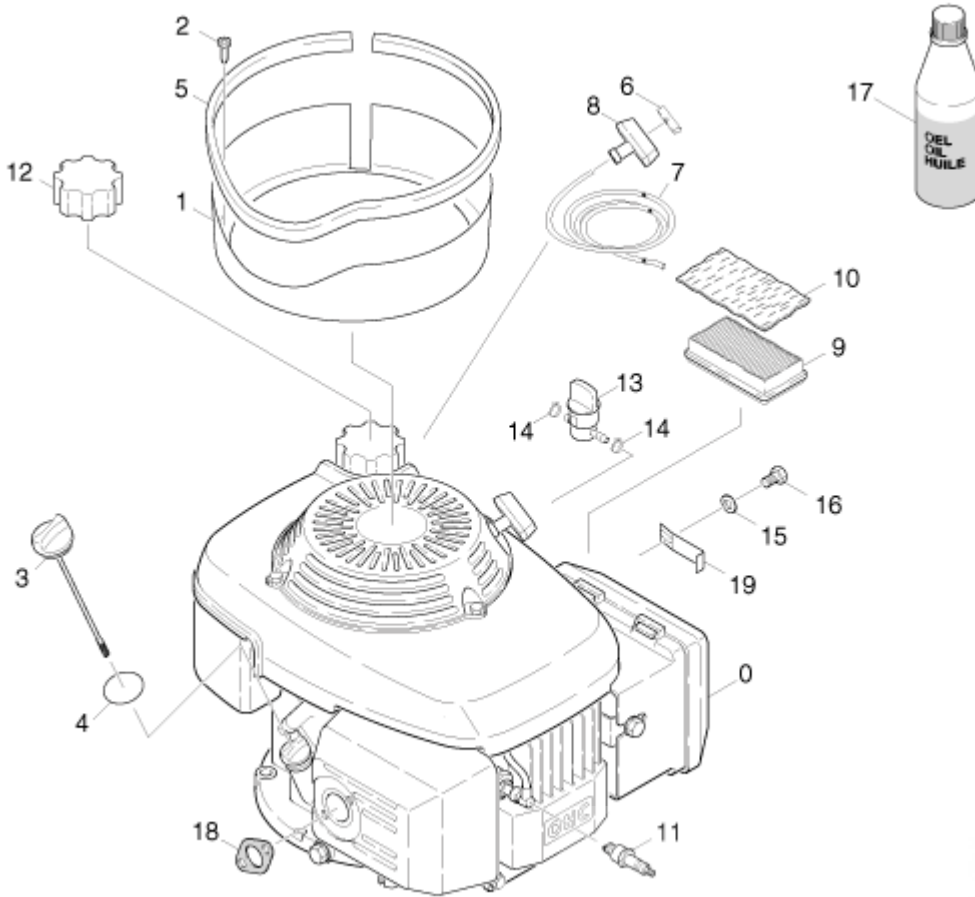
/

KSM 750 B

/

6.4 MOTOR-PIECE PARTS

200740



0	6.491-691.0	GASOLINE ENGINE	1
1	5.031-954.0	AIR CIRCULATION	1
2	7.303-382.0	SHEET METAL SCREW	1
3	6.491-705.0	OIL DIP ROD	1
4	6.491-713.0	GASKET	1
5	6.368-089.0	SHEATING	1
6	6.491-468.0	HANDLE	1
7	6.491-715.0	STARTER ROPE	1
8	6.491-706.0	HANDLE	1
9	6.491-707.0	AIR FILTER	1
10	6.491-463.0	AIR FILTER FLEECE	1
11	6.954-006.0	IGNITION PLUG	1
12	6.491-708.0	CAP OF A TANK	1
13	6.491-716.0	FUEL COCK	1
14	6.389-768.0	HOSE BAND CLIP	3
15	7.312.002.0	WASHER	1

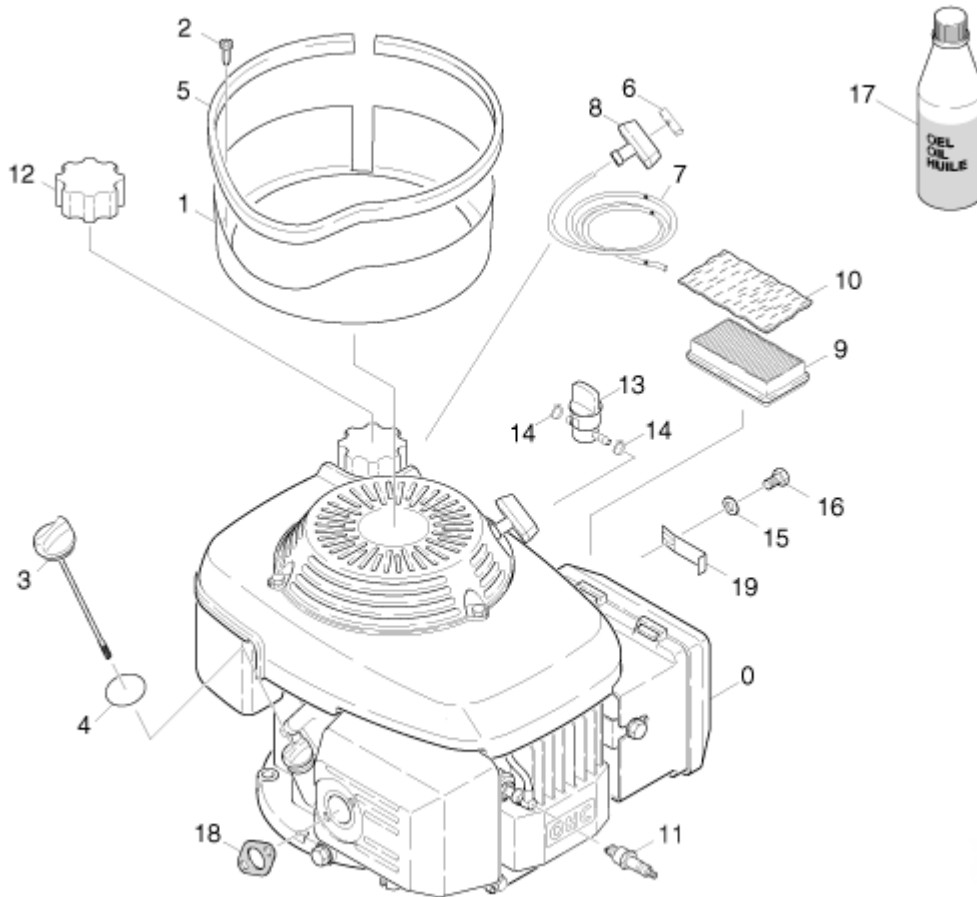
onderdelenlijst en tekening

5.958-205 /

KSM 750 B /

6.4 MOTOR-PIECE PARTS

200740



13	6.491-716.0	FUEL COCK	1
14	6.389-768.0	HOSE BAND CLIP	3
15	7.312-003.0	WASHER	1
16	7.304-372.0	HEXAGONAL HEAD SCREW	1
17	6.288-050.0	ENGINE OIL	1
18	6.491-712.0	SEAL	1
19	5.048-062.0	PLATE	1

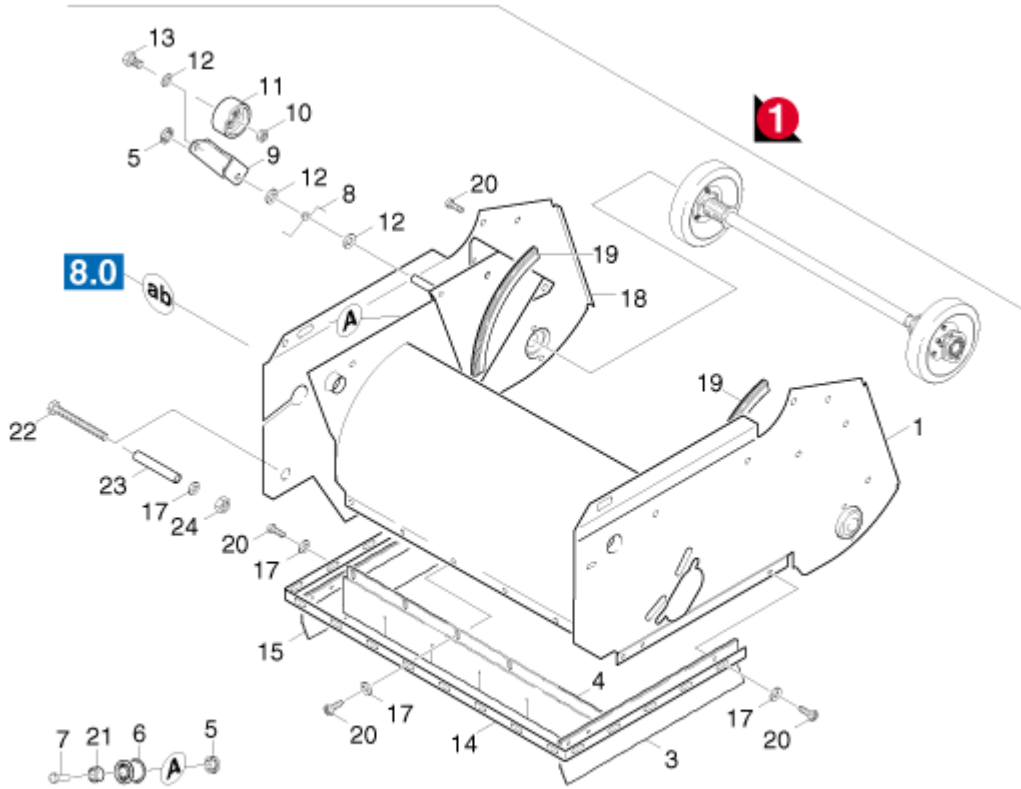
onderdelenlijst en tekening

5.958-205 /

KSM 750 B

7.1 SWEEP ROLLER CHEST - VERSION 1 /

200740



1	4.038-621.0	SWEEP ROLLER CHEST	1
3	6.365-411.0	SEAL	1
4	6.365-442.0	SEAL	1
5	6.343-147.0	QUICK-FASTENER	2
6	6.435-274.0	DEFLECTION PULLEY	1
7	5.316-294.0	BOLT	1
8	5.332-400.0	SPIRAL SPRING	1
9	5.046-903.0	PLATE	1
10	7.311-004.0	HEXAGON NUT	1
11	5.515-092.0	ROLLER	1
12	7.312-004.0	WASHER	1
13	7.305-627.0	FLAT HEADED SCREW	1
14	5.047-663.0	STRIP	1
15	6.365-412.0	SEAL	1
17	7.312-003.0	WASHER	14
18	5.047-822.0	COVER PLATE	1

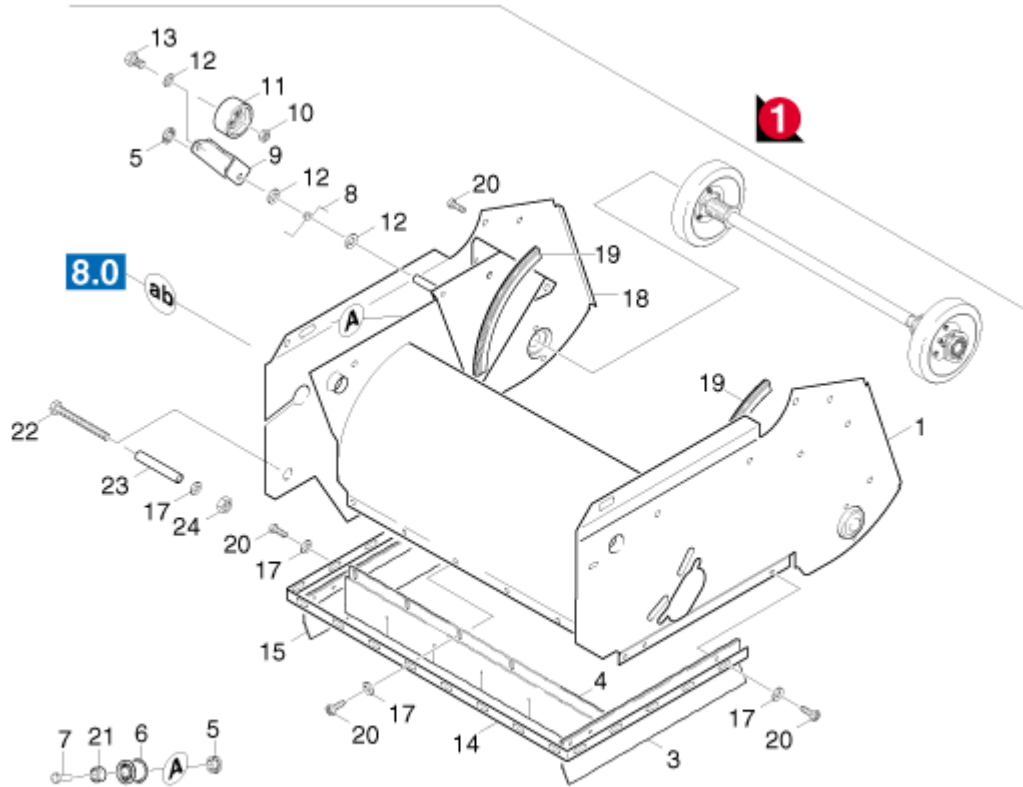
onderdelenlijst en tekening

5.958-205 /

KSM 750 B

7.1 SWEEP ROLLER CHEST - VERSION 1 /

200740



15	6.365-412.0	SEAL	1
17	7.312-003.0	WASHER	14
18	5.047-832.0	COVER PLATE	1
19	5.364-192.0	SEAL	2
20	7.303-046.0	SCREW	20
21	6.347-094.0	SPACER SLEEVE	1
22	4.462-083.0	EXHAUST PIPE	1
23	7.306-138.0	SCREW	1
24	5.110-747.0	SPACER SLEEVE	1
25	7.311-427.0	HEXAGON NUT	1

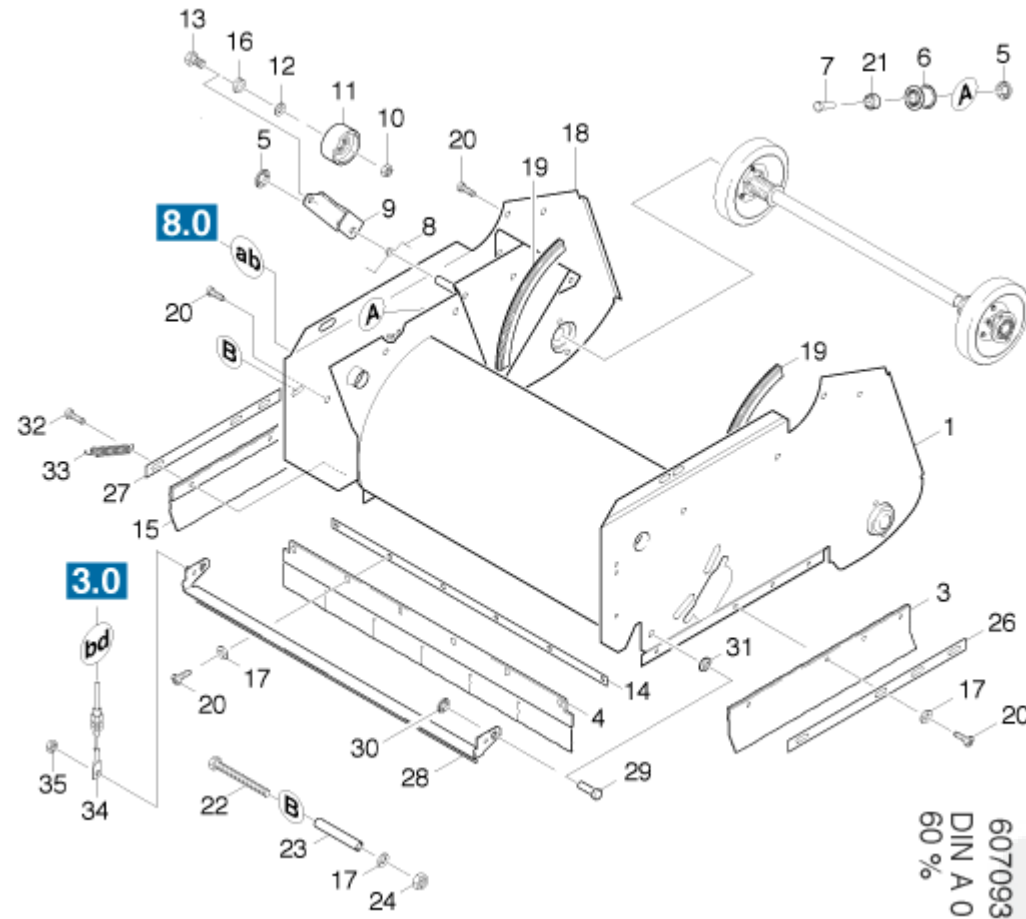
onderdelenlijst en tekening

5.958-205 /

KSM 750 B

7.2 SWEEP ROLLER CHEST - VERSION 2 /

200740



1	4.038-788.0	SWEEP ROLLER CHEST	1
3	6.365-411.0	SEAL	1
4	6.365-454.0	SEAL	1
5	6.343-147.0	QUICK-FASTENER	2
6	6.435-274.0	DEFLECTION PULLEY	1
7	5.316-294.0	BOLT	1
8	5.332-400.0	SPIRAL SPRING	1
9	5.046-903.0	PLATE	1
10	7.311-004.0	HEXAGON NUT	1
11	5.515-092.0	ROLLER	1
12	7.312-004.0	WASHER	1
13	7.304-399.0	HEXAGONAL HEAD SCREW	1
14	5.190-136.0	STRIP	1
15	6.365-412.0	SEAL	1
16	7.343-601.0	CONICAL SOCKET	1
17	7.312-002.0	WASHER	1

onderdelenlijst en tekening

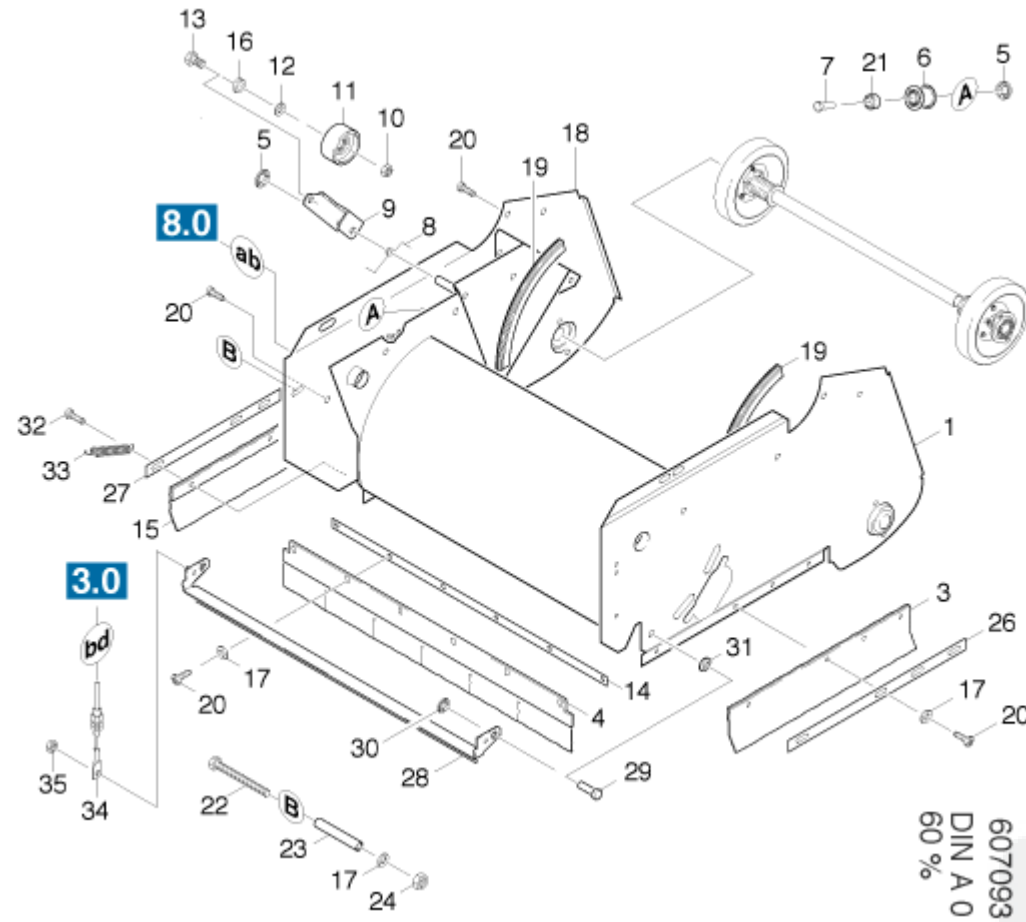
5.958-205

/

KSM 750 B

7.2 SWEEP ROLLER CHEST - VERSION 2 /

200740



15	6.365-412.0	SEAL	1
16	7.343-601.0	CONICAL SOCKET	1
17	7.312-003.0	WASHER	14
18	5.048-471.0	COVER PLATE	1
19	5.364-192.0	SEAL	2
20	7.303-046.0	SCREW	13
21	6.347-094.0	SPACER SLEEVE	1
22	7.306-138.0	SCREW	1
23	5.110-747.0	SPACER SLEEVE	1
24	7.311-427.0	HEXAGON NUT	1
26	5.190-134.0	STRIP	1
27	5.190-135.0	STRIP	1
28	4.038-787.0	PLATE	1
29	7.316-214.0	BOLT	1
30	6.343-149.0	QUICK-FASTENER	1
31	7.312-074.0	WASHER	1

onderdelenlijst en tekening

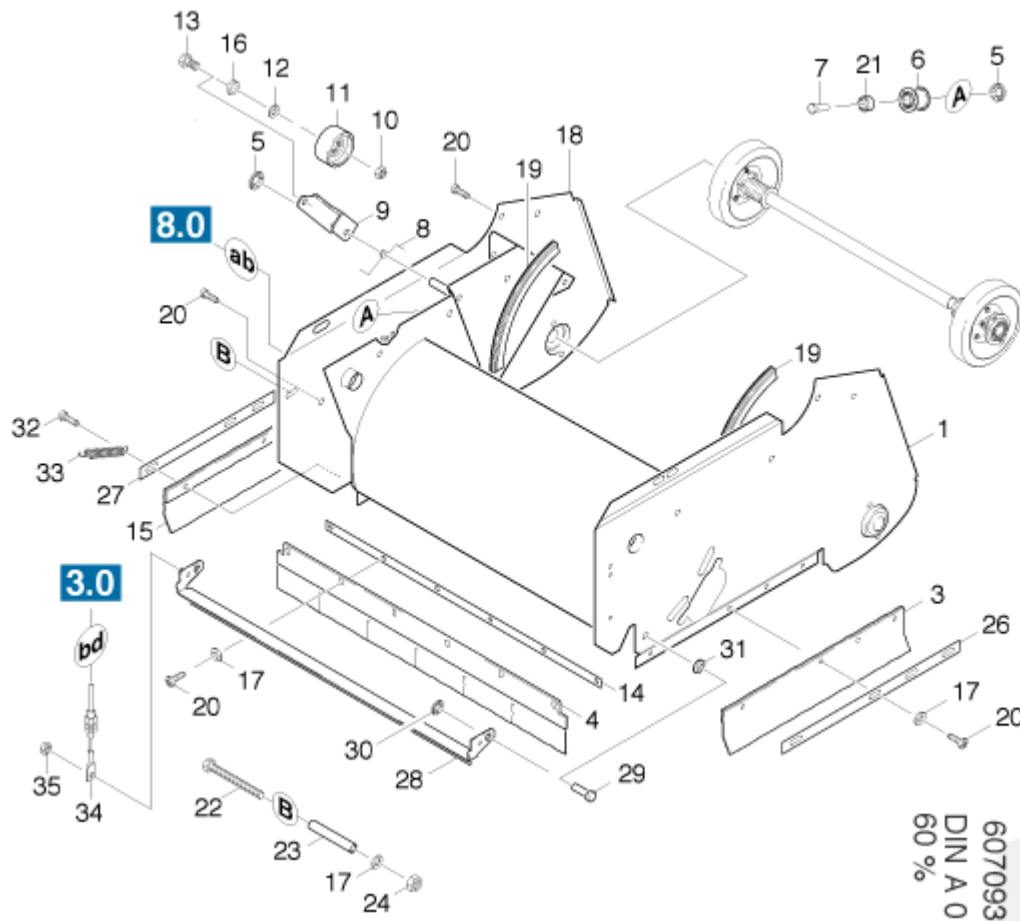
5.958-205

/

KSM 750 B

7.2 SWEEP ROLLER CHEST - VERSION 2 /

200740



29	7.316-214.0	BOLT	1
30	6.343-149.0	QUICK-FASTENER	1
31	7.312-074.0	WASHER	1
32	7.303-049.0	SCREW	1
33	6.330-056.0	EXTENSION SPRING	1
34	6.431-198.0	BOWDEN WIRE	1
35	7.311-431.0	HEXAGON NUT	1

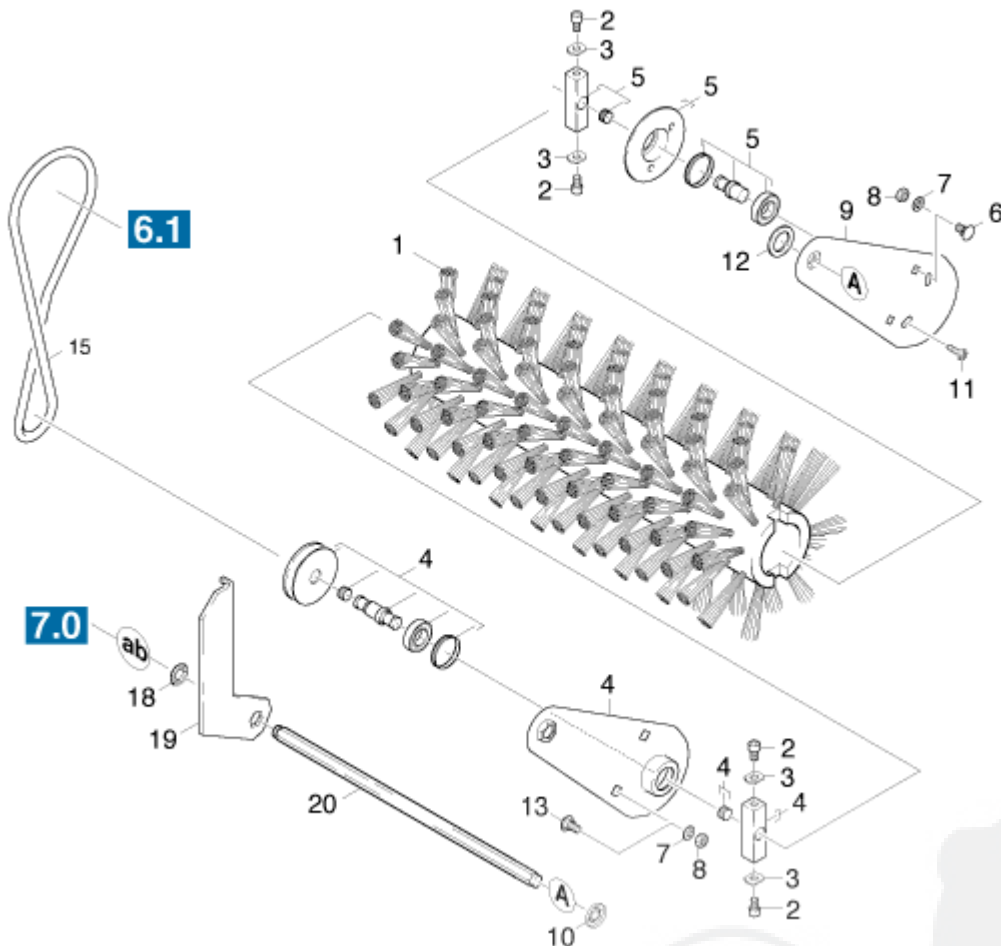
onderdelenlijst en tekening

5.958-205 /

KSM 750 B

/8.0 REVERSING ROLLING MILL

200740



1	6.905-587.0	REVERSING ROLLING MILL	1
1	6.905-868.0	REVERSING ROLLING MILL	1
1	6.905-870.0	REVERSING ROLLING MILL	1
2	7.306-041.0	CHEESE HEAD SCREW	4
3	5.047-121.0	PLATE	4
4	4.038-435.0	LEVER	1
5	4.038-448.0	LEVER	1
6	7.303-204.0	SAUCER-HEAD SCREW	2
7	7.312-277.0	WASHER	4
8	7.311-427.0	HEXAGON NUT	4
9	5.046-859.0	LEVER	1
10	6.343-175.0	QUICK-FASTENER	1
11	7.303-068.0	SCREW	2
12	6.312-069.0	WASHER	1
13	7.303-193.0	SAUCER-HEAD SCREW	2
15	6.348-282.0	BELT	1

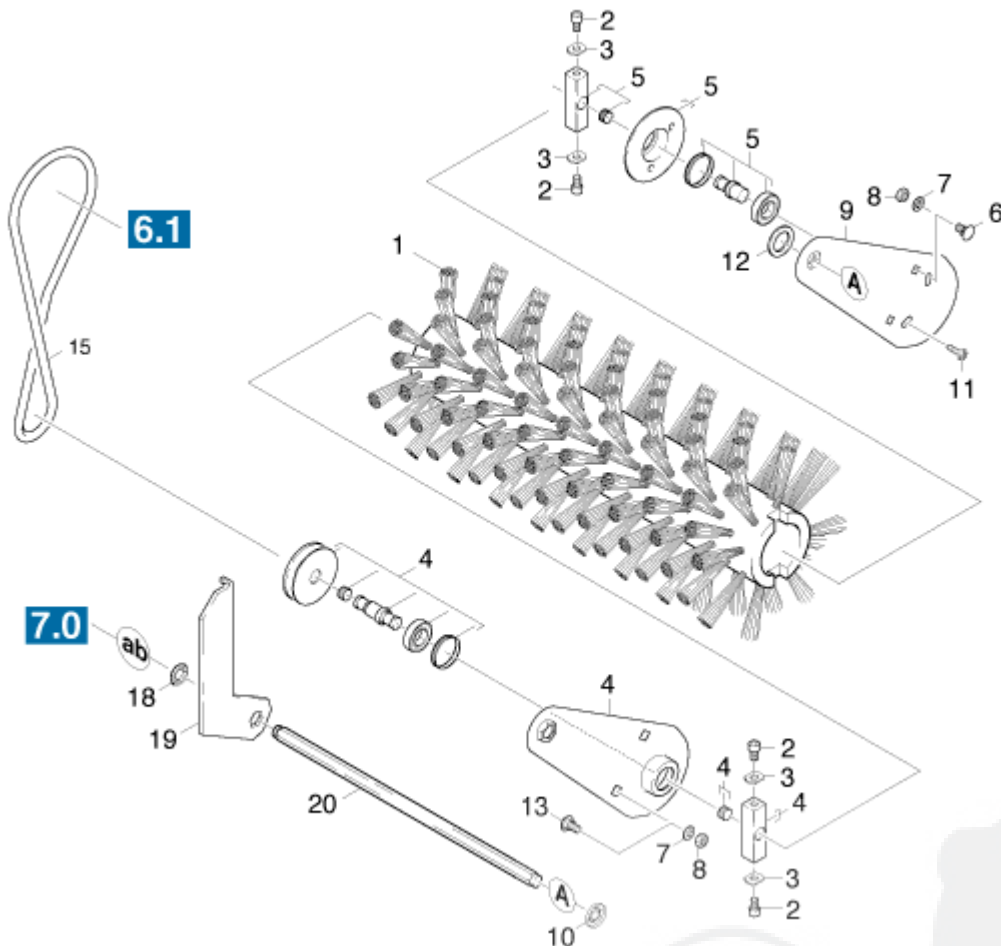
onderdelenlijst en tekening

5.958-205 /

KSM 750 B

/8.0 REVERSING ROLLING MILL

200740



12	6.312-069.0	WASHER	1
13	7.303-193.0	SAUCER-HEAD SCREW	2
15	6.348-283.0	BELT	1
18	6.343-202.0	QUICK-FASTENER	1
19	5.047-582.0	PLATE	1
20	5.100-178.0	SHAFT	1

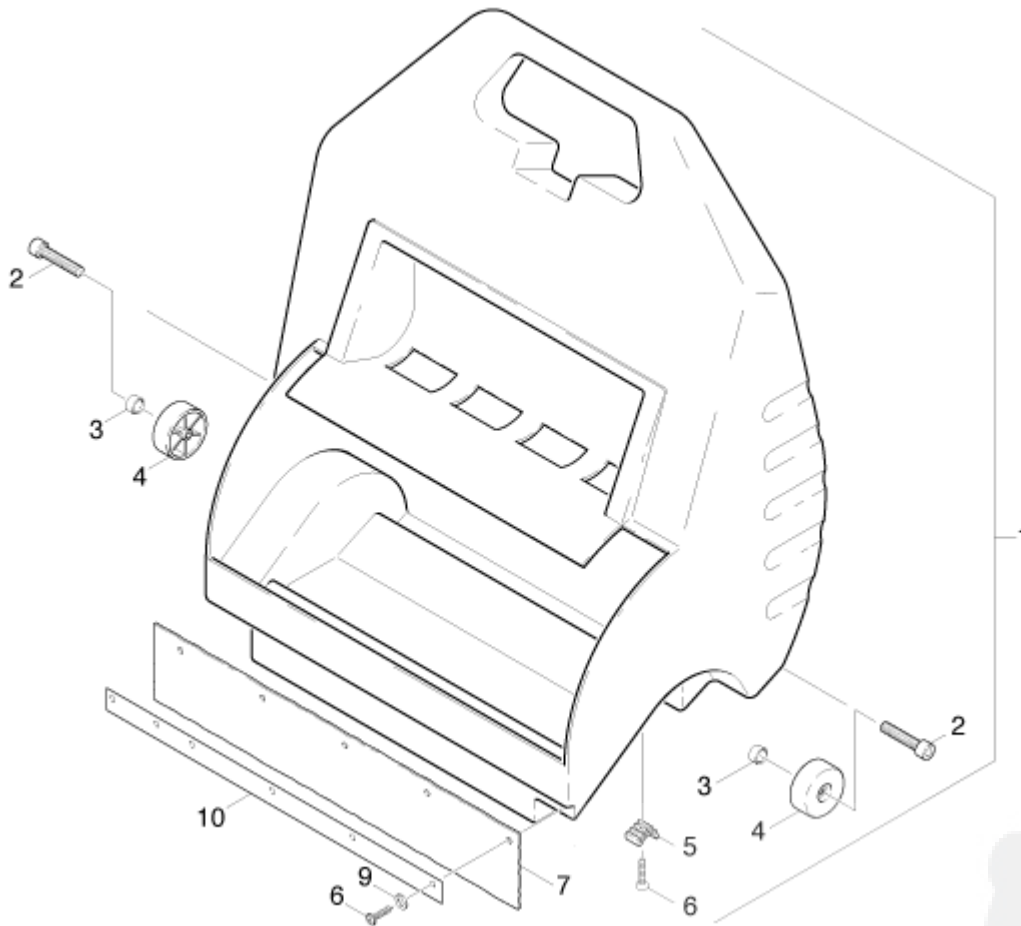
onderdelenlijst en tekening

5.958-205 /

KSM 750 B /

9.0 SWEEP TANK

200740



1	4.070-217.0 SWEEP TANK	1
2	7.306-145.0 SCREW	2
3	5.110-635.0 SLEEVE	2
4	5.515-068.0 WHEEL	2
5	5.031-157.0 SLIDING	3
6	6.303-057.0 FLAT HEADED SCREW	9
7	6.365-395.0 SEAL	1
9	7.312-291.0 WASHER	6
10	5.031-847.0 STRIP	1

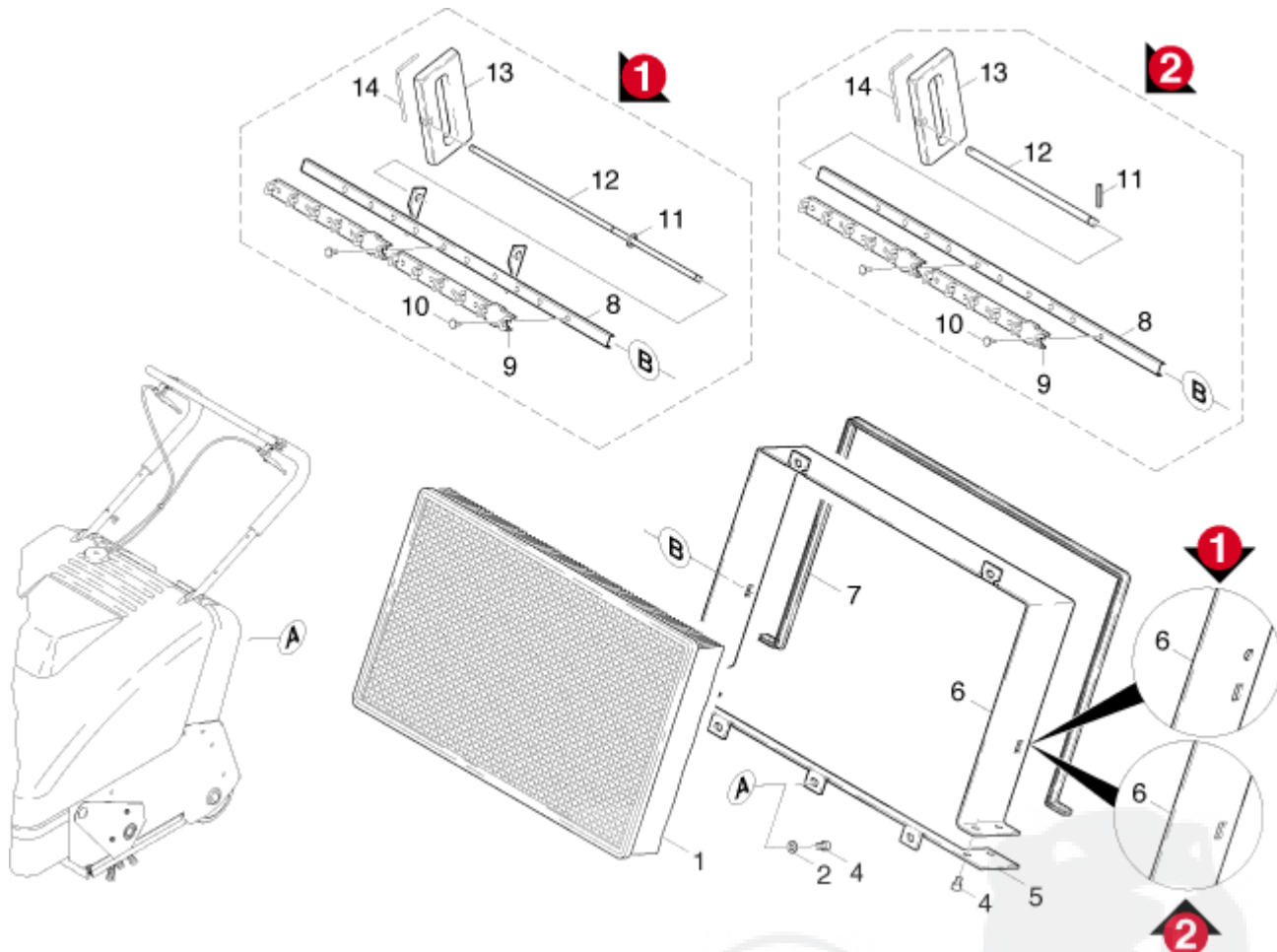
onderdelenlijst en tekening

5.958-205 /

KSM 750 B /

10.0 VIBRATOR

200740



1	5.731-585.0	FILTER	1
2	7.312-003.0	WASHER	5
4	6.303-193.0	CHEESE HEAD SCREW	9
5	5.046-971.0	PLATE	1
6	5.046-850.0	PLATE	1
6	5.048-137.0	PLATE	1
6	5.048-137.0	PLATE	1
7	5.364-170.0	SEAL	1
8	4.038-451.0	BOLT	1
8	5.023-355.0	U-PROFILE	1
9	5.030-900.0	STRIPPER	2
10	6.315-068.0	RIVET	10
11	7.316-342.0	COTTER	1

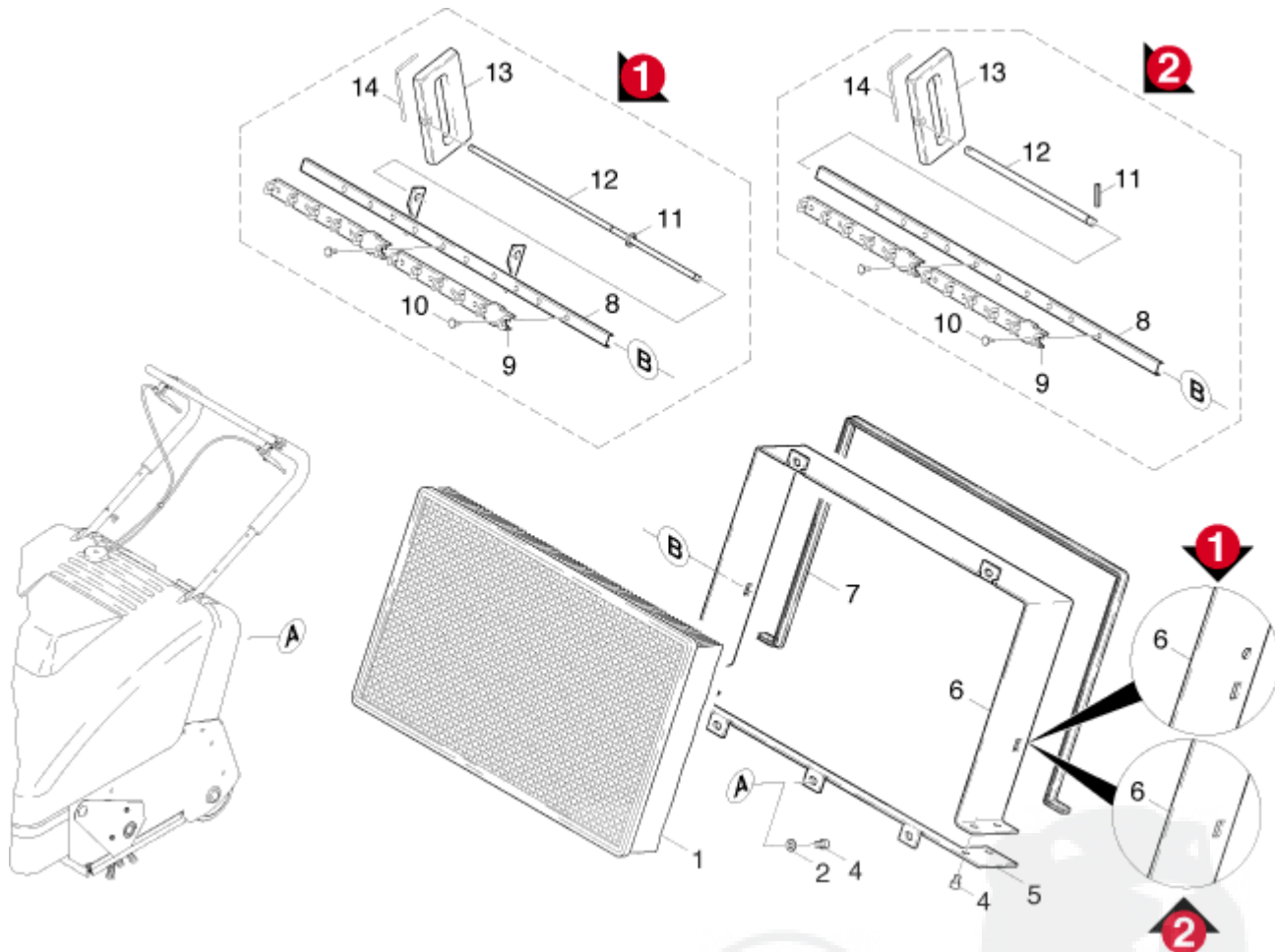
onderdelenlijst en tekening

5.958-205 /

KSM 750 B /

10.0 VIBRATOR

200740



10	6.315-068.0 RIVET	10
11	7.316-342.0 COTTER VERSION 2 /	1
11	7.343-302.0 LOCK WASHER VERSION 1 /	2
12	5.107-162.0 BAR VERSION 1 /	1
12	5.107-199.0 BAR VERSION 2 /	1
13	5.321-115.0 HANDLE	1
14	5.037-061.0 HOOK	1