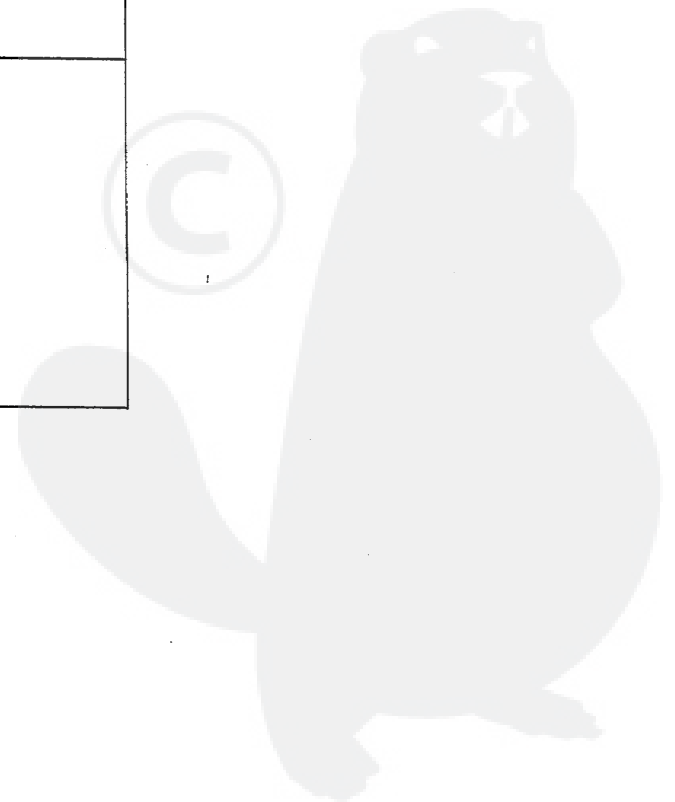


Kawasaki

2-stroke air-cooled gasoline engine

PARTS LIST

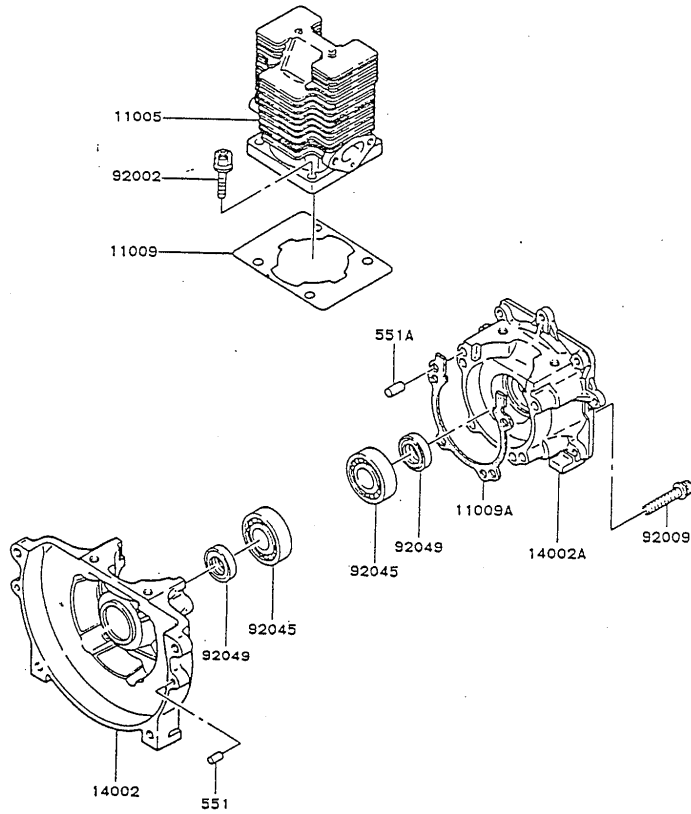
ENGINE CODE	REMARKS
TD33H-BF34	for BK.333Fx
RED.	



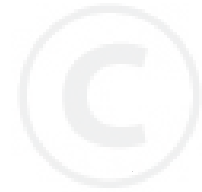
TD033H-□ F34

E0110-2052A

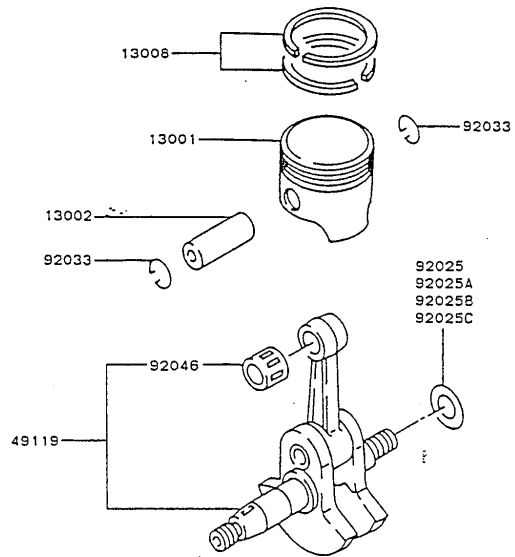
1. シリンダー／クランクケース



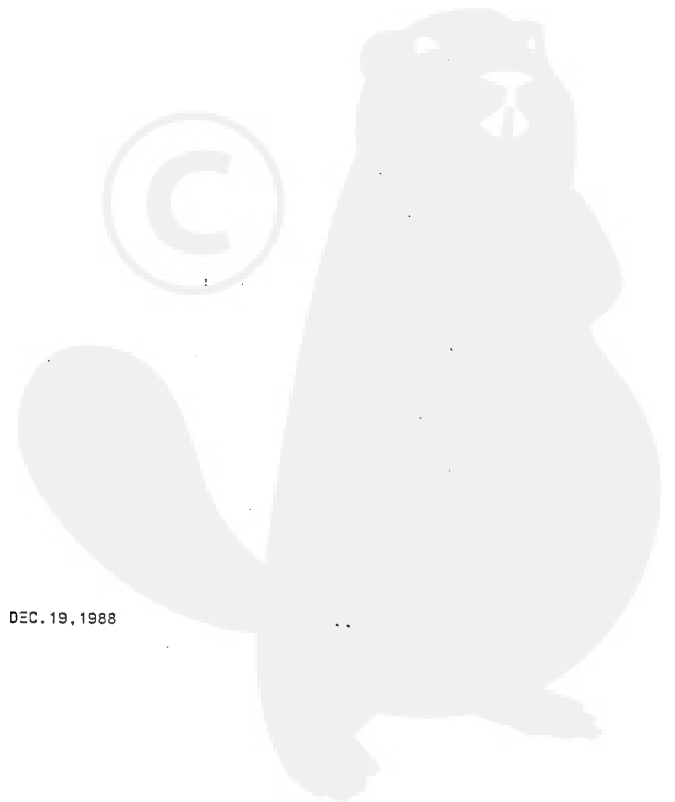
見出 番号	部品番号	部品名	個 数
			A
11005	11005-2090	CYLINDER-ENGINE	1
11009	311901-1221A	GASKET	1
11009A	311901-4113A	GASKET	1
14002	310824-4111A	CRANKCASE	1
14002A	310824-4112A	CRANKCASE	1
92002	310701-1225A	BOLT	4
92009	92009-2115	SCREW	4
92045	311702-4211-00	BEARING-BALL,6201C3	2
92049	92049-2075	SEAL-OIL	2
551	551A0410	PIN-DOWEL	2
551A	551A0610	PIN-DOWEL	2



2. ピストン/クランクシャフト



見出 番号	部品番号	部品名	個 数
13001	311901-3111E	PISTON-ENGINE	1
13002	311702-3121-00	PIN-PISTON	1
13008	311901-3010A	RING-SET-PISTON	1
49119	311901-3210B	CRANKSHAFT-ASSY	1
92025	311501-3231-00	SHIM, T=0.10	AR
92025A	311501-3232-00	SHIM, T=0.20	AR
92025B	311501-3233-00	SHIM, T=0.40	AR
92025C	311501-3234-00	SHIM, T=0.60	AR
92033	311703-3122A	RING-SNAP	2
92046	311702-3242-01	BEARING-NEEDLE	1

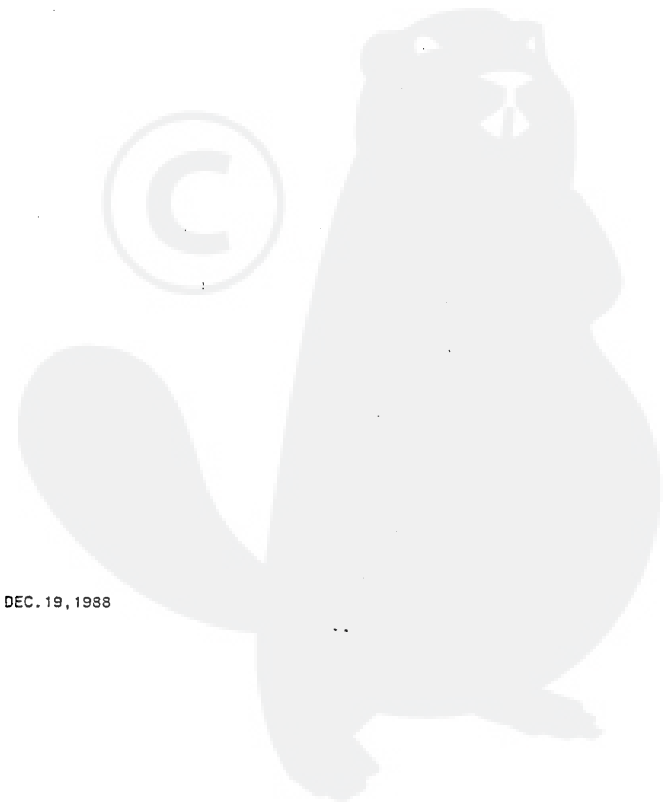
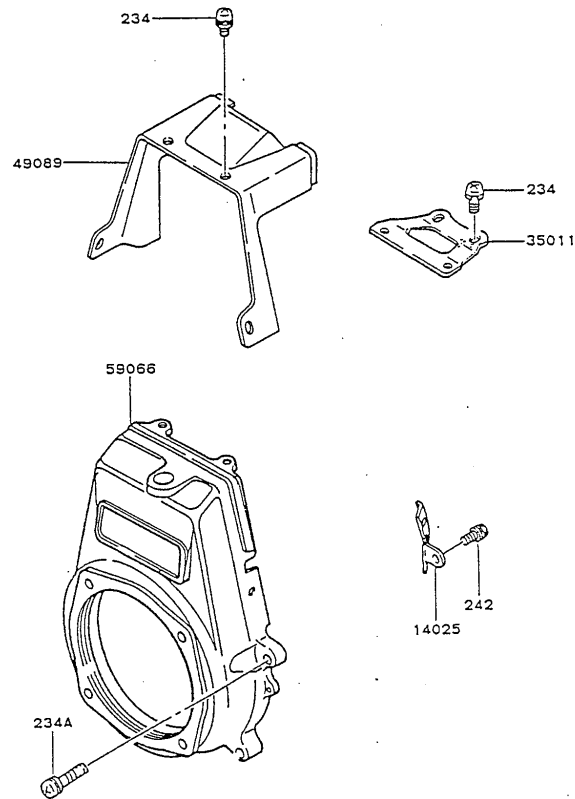


TD033H-□ F34

E0150-2066A

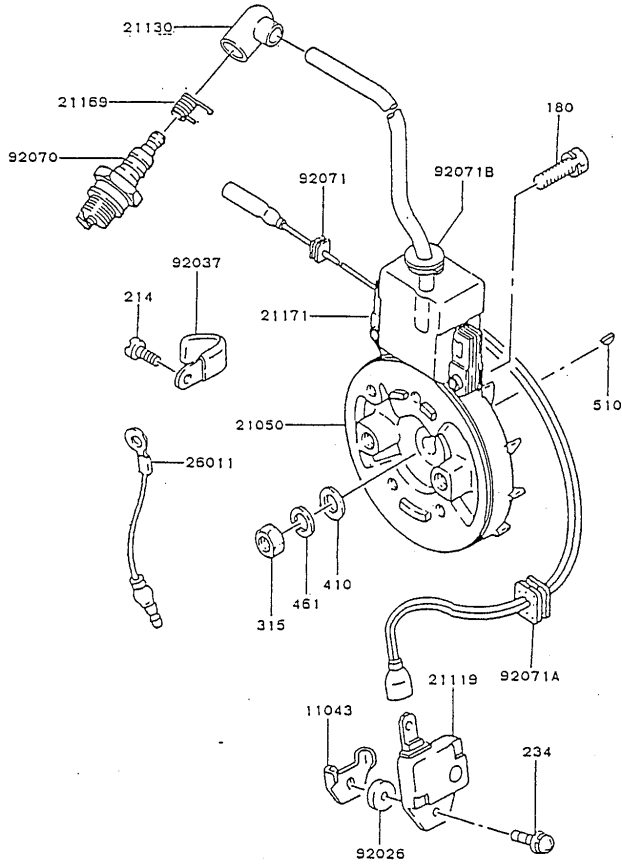
3. 冷却装置

見出 番号	部品番号	部 品 名	個 数
			A
14025	311950-1616B	COVER	1
35011	310850-1619A	STAY	1
49089	49089-2158-9B	SHROUD-ENGINE	1
59066	59066-2227-9B	HOUSING-FAN	1
234	234B0410	SCREW-PAN-WSP+-	5
234A	234B0520	SCREW-PAN-WSP+-	4
242	242B0512	SCREW-PAN-WSP+-	1



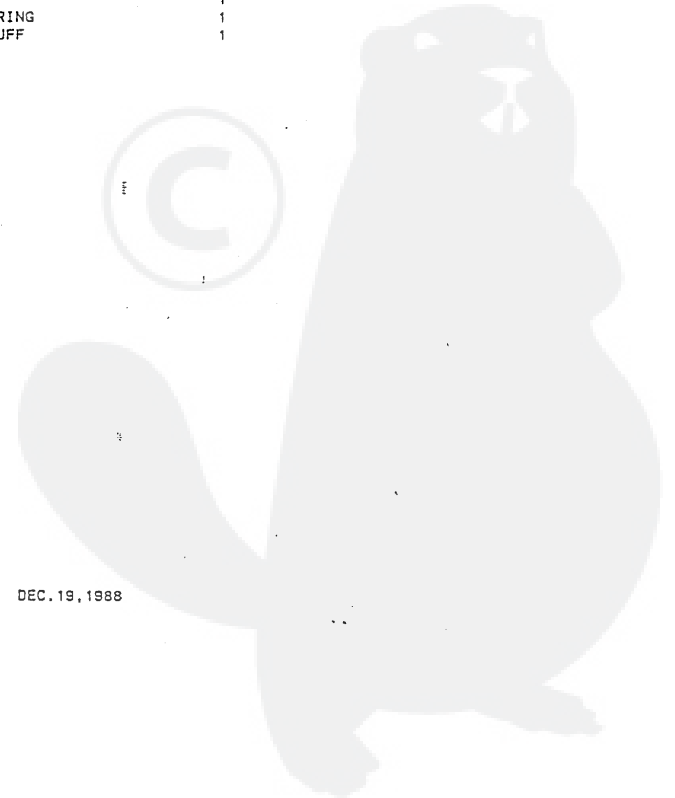
TD033H-□ F34

E0160-2205A



4. 電 裝 品

見出 部号	部品番号	部品名	個 数
			A
11043	310702-8137A	BRACKET	1
21050	21050-2128	FLYWHEEL	1
21119	21119-2101	IGNITER	1
21130	311509-8418-02	CAP-SPARK PLUG	1
21169	311509-8419B	TERMINAL	1
21171	310802-8103A	COIL-ASSY-IGNITION	1
26011	26011-2113	WIRE-LEAD	1
92026	310702-8143A	SPACER	1
92037	310701-8163A	CLAMP	1
92070	92070-2051	PLUG-SPARK, BM6A	1
92071	310101-8164A	GROMMET	1
92071A	310702-8164A	GROMMET	1
92071B	311501-8164-01	GROMMET	1
180	180B0520	BOLT-UPSET-WS	2
214	214B0406	SCREW-PAN+-	1
234	234B0414	SCREW-PAN-WSP+-	1
315	315B0800	NUT-HEX-FINE	1
410	410B0800	W-PLAIN-S	1
461	461F0800	WASHER-SPRING	1
510	510A3100	KEY-WOODRUFF	1

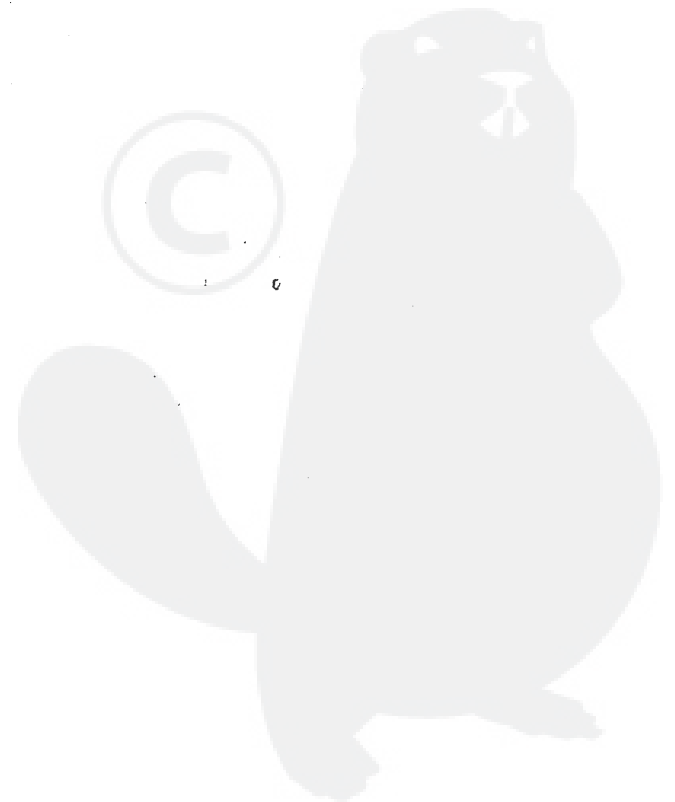
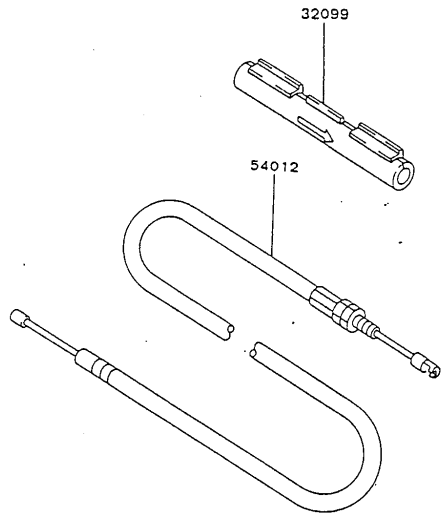


TD033H-□ F34

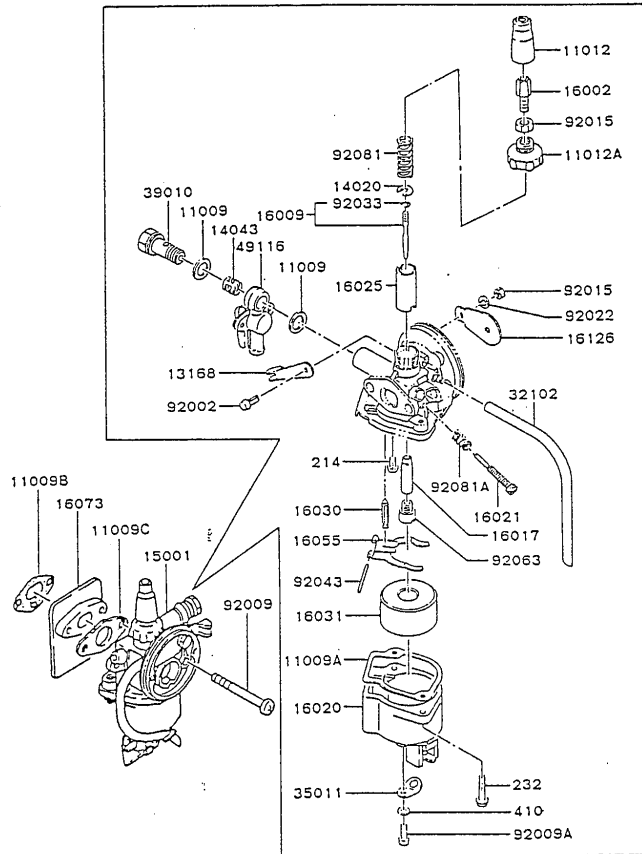
5 - CONTROL-EQUIPMENT

E0170-2057A

Ref. No.	Parts No.	Description	Quantity
1	32099	32099-2140	1
2	54012	54012- 2140 2359	1



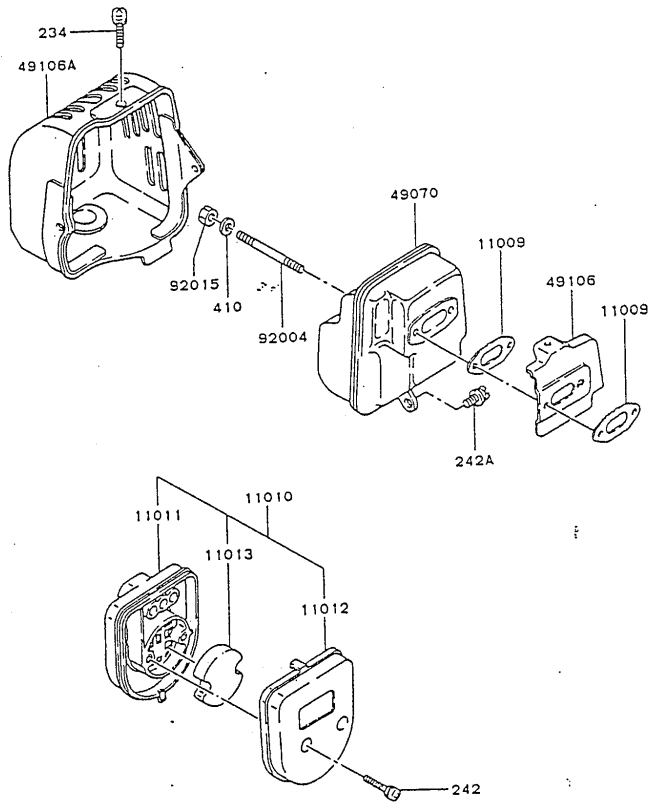
6. キャブレター



見出 番号	部品番号	部 品 名	個 数 A
11009	310501-6118A	GASKET	2
11009A	310802-6128A	GASKET	1
11009B	311901-6184B	GASKET	1
11009C	311901-6186A	GASKET	1
11012	310401-6169A	CAP	1
11012A	310827-6105A	CAP	1
13168	310802-6142A	LEVER	1
14020	311502-6145-00	RETAINER, VALVE	1
14043	310501-6162A	FILTER	1
15001	310816-6100A	CARBURETOR-ASSY	1
16002	311220-6140-00	ADJUSTER-CABLE	1
16009	311950-6108A	NEEDLE-JET, #079	1
16017	310802-6123A	JET-NEEDLE	1
16020	310802-6130A	CHAMBER-FLOAT	1
16021	310802-6114A	SCREW-THROTTLE STOP	1
16025	310827-6101A	VALVE-THROTTLE	1
16030	310802-6122A	VALVE-FLOAT	1
16031	311901-6126A	FLOAT	1
16055	310201-6178B	ARM-F_OAT	1
16073	310815-6181A	INSULATOR	1
16126	310815-6102A	VALVE	1
32102	310802-6150A	PIPE	1
35011	310815-6854A	STAY	1
39010	310501-6135A	BOLT-EYE	1
49116	311729-6110A	VALVE-ASSY	1
92002	310802-6153A	BOLT	1
92009	310815-6157A	SCREW	2
92009A	92009-2205	SCREW	1
92015	311120-6146-00	NUT	2
92022	311543-6147-00	WASHER	1
92033	311220-6134-00	RING-SNAP	1
92043	311901-6127A	PIN	1
92063	310815-6132A	JET-MAIN, #46	1
92081	311120-6103-00	SPRING, THROTTLE	1
92081A	311502-6116-00	SPRING	1
214	214B0306	SCREW-PAN+-	1
232	232B0416	SCREW-PAN-WS+-	2
410	410B0400	W-PLAIN-S	1

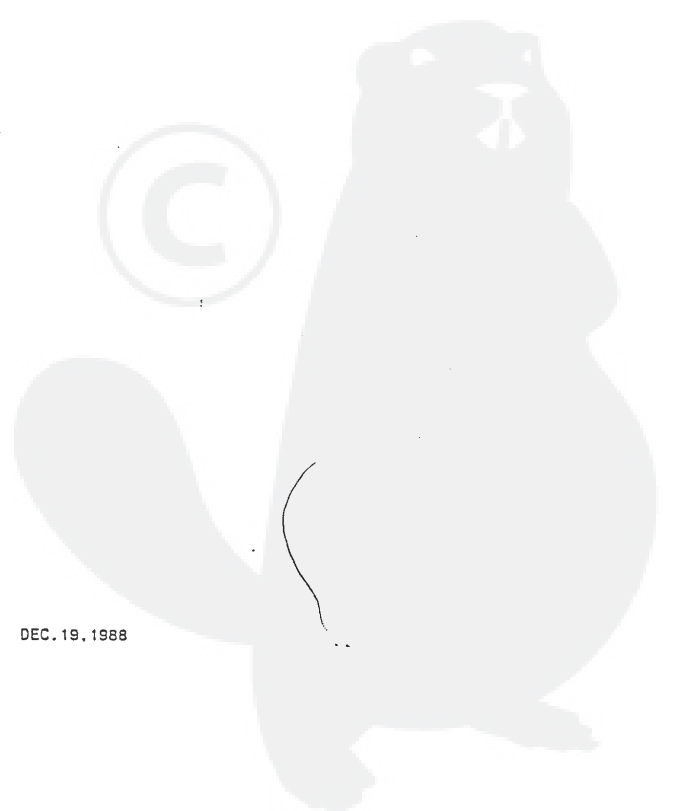
TD033H-□ F34

E0190-2155A



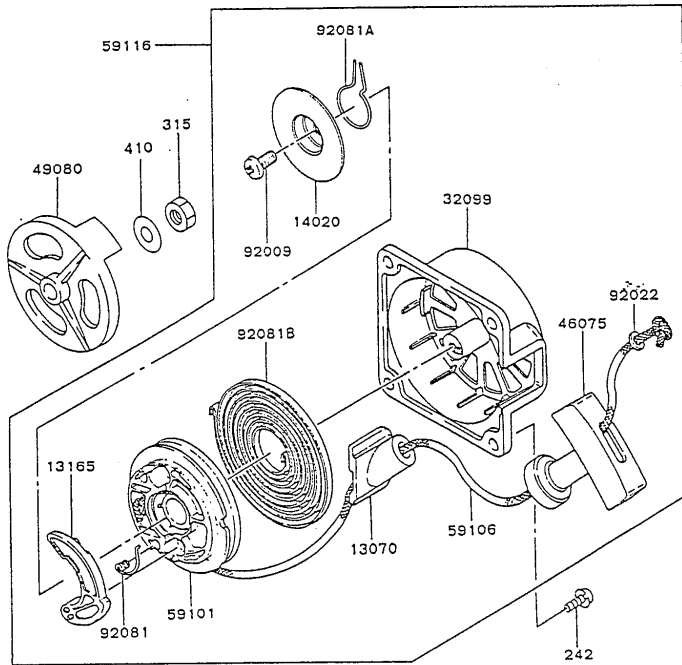
7. エアフィルター/マフラー

見出 番号	部品番号	部品名	個 数
			A
11009	11009-2300	GASKET	2
11010	310801-1310C	FILTER-ASSY-AIR	1
11011	310801-1311C	CASE-AIR FILTER	1
11012	310801-1316A	CAP	1
11013	311901-1312A	ELEMENT-AIR FILTER	1
49070	49070-2241-9X	MUFFLER-COMP	1
49106	310850-1432A	COVER-MUFFLER	1
49106A	49106-2235-YD	COVER-MUFFLER	1
92004	310801-1483A	STUD	2
92015	310701-1481A	NUT	2
234	234B0510	SCREW-PAN-WSP+-	1
242	242B0432	SCREW-PAN-WSP+-	2
242A	242B0512	SCREW-PAN-WSP+-	1
410	410B0500	W-PLAIN-S	2



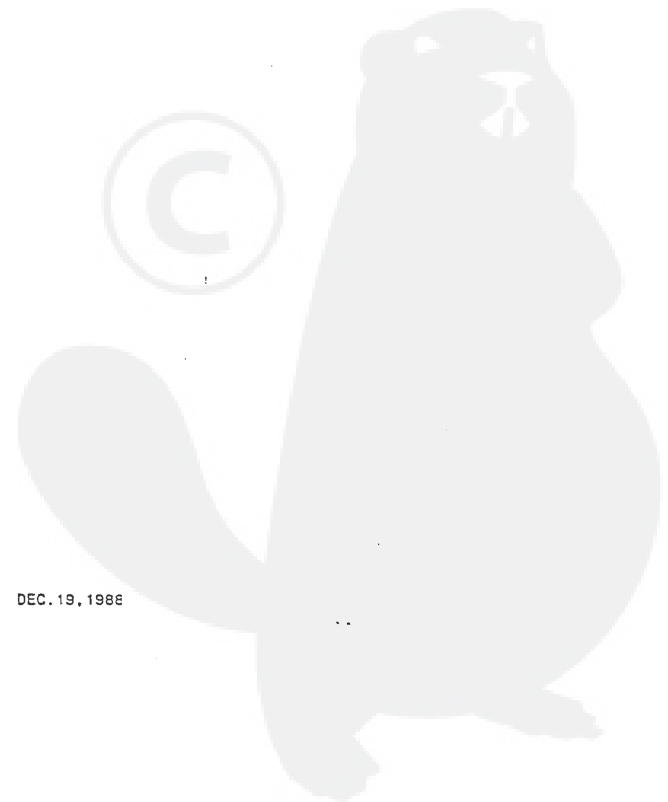
TD033H-□ F34

E0210-2066A



8. スターター

見出 番号	部品番号	部品名	個 数
13070	311901-3435A	GUIDE	1
13165	311400-3445-00	PAWL	1
14020	311901-3449B	RETAINER	1
32099	311901-3437A	CASE	1
46075	311901-3454A	GRIP	1
49080	311901-3432B	PULLEY-STARTING	1
59101	311901-3441B	REEL	1
59106	311901-3453B	ROPE, 3.5X890	1
59116	311901-3430A	STARTER-ASSY-RECDIL	1
92009	311400-3447-00	SCREW	1
92022	311901-3455A	WASHER	1
92081	311400-3444B	SPRING	1
92081A	311400-3446-00	SPRING	1
92081B	311901-3452A	SPRING	1
242	242B0516	SCREW-PAN-WSP+-	4
315	315B0800	NUT-HEX-FINE	1
410	410B0800	W-PLAIN-S	1

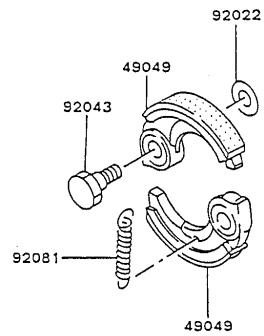


TD033H-□F34

E0220-2005B

9. 出力取出部

見出 番号	部品番号	部品名	個 数
			A
49049	49049-2053	SHOE-CLUTCH	2
92022	92026-2125	WASHER	2
92043	92043-2070	PIN, CLUTCH	2
92081	311703-3554-00	SPRING	1



TD033H-□ F34

F0290-2185A

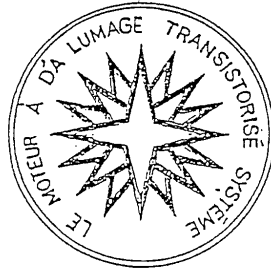
10. ラベル

見出 番号	部品番号	部品名	個 数
56030	310819-0845A	LABEL	1
56031	310828-0826A	LABEL-MANUAL	1
56039	56039-2167	LABEL-PRODUCT	1
56040	310721-0814A	LABEL-WARNING	1

56031



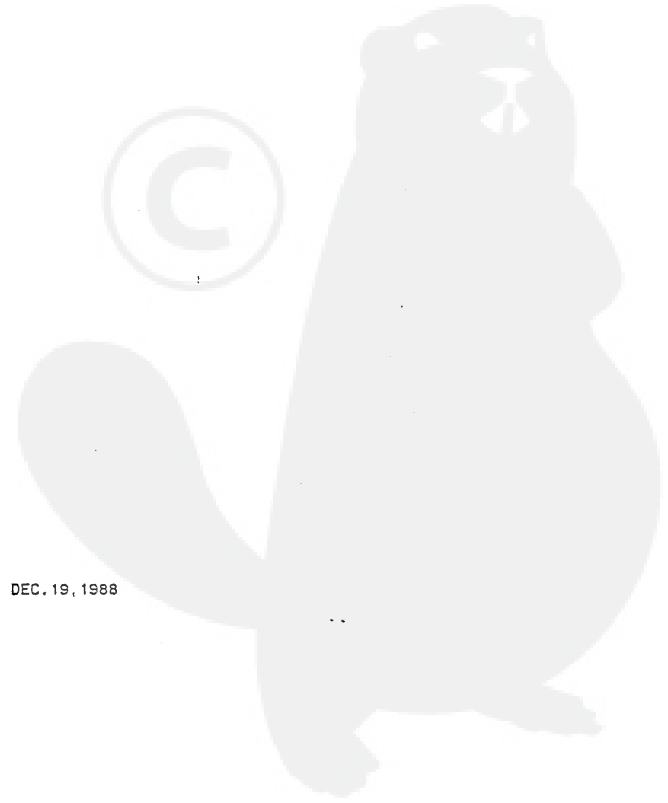
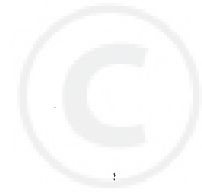
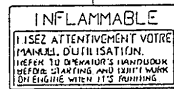
56030



56039



56040



TD033H— F34

F0300-2008A

11. 付属品

見出 番号	部品番号	部品名	個 数
56007	311920-0900A	TOOLKIT	1
92107	311920-0951A	TOOL-DRIVER	1
92110	314490-0931A	TOOL-WRENCH, 19X21	1

