

RICAMBI
PIECES
SPARE PARTS
ERSATZTEILE
REPUESTOS

5LD675-2
5LD825-2
5LD825-2/L

LC
FAE
REC
MA

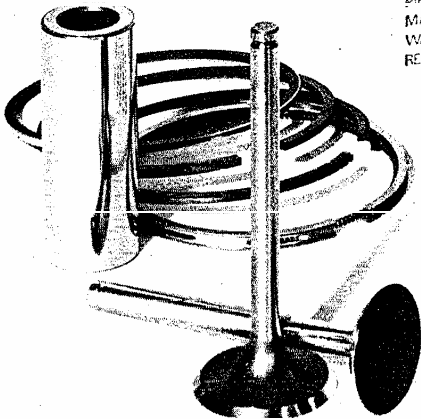
LOM
FABBI
REGG
MAL

SFF
POC
GAI
DICI
SER
SERI
POCI
GASI
RICA
DICH
PIEC
MAI
WAI
REPL

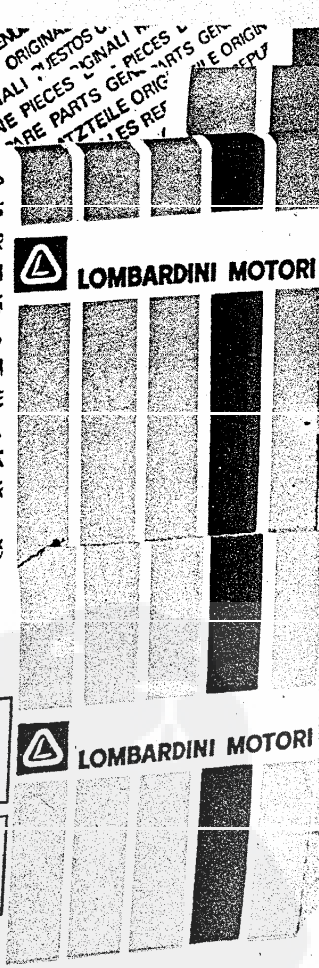
SERI
POCI
GASI
DICH
SERIE
RICA
PIEC
MAI
WAI
REPL

LOMBARDINI
FABBRICA ITALIANA MOTORI s.p.a.
REGGIO EMILIA, ITALIA
MADE IN ITALY

SERIE GUARNIZIONI
POCHETTE JOINTS
GASKET SET
DICHTUNGSATZ
SERIE INTAS
RICAMBI PRIMO IMPIEGO
PIECES POUR L'ENTRETIEN
MAINTENANCE SPARE PARTS
WARTUNG -ERSATZTEILE
REPUESTOS DE PRONTO EMPLEO



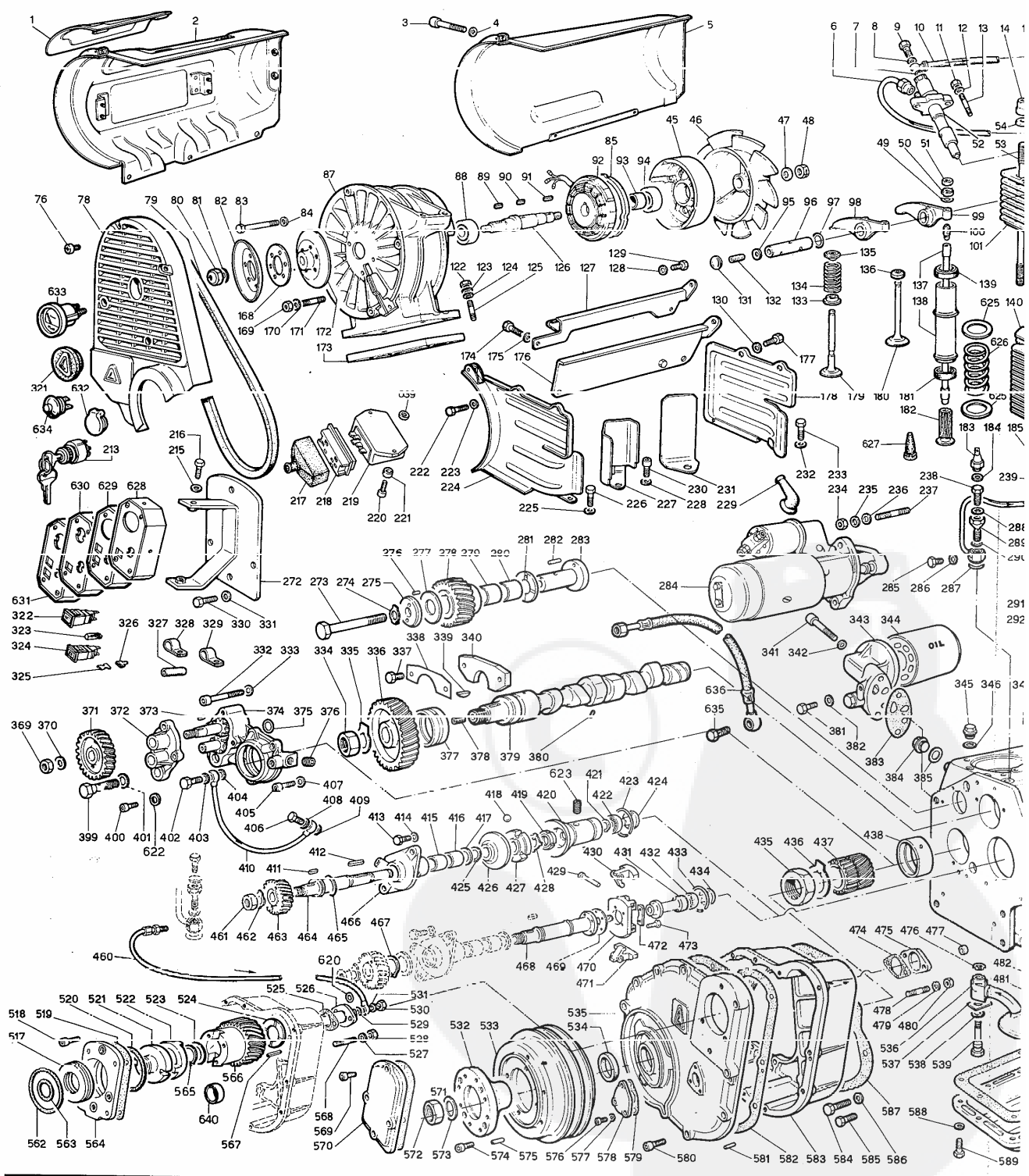
REPUESTOS ORIGINALES
ORIGINAL ERSATZTEILE
GENUINE SPARE PARTS
PIECES D'ORIGINE
RICAMBI ORIGINALI



**RICAMBI PER MOTORE STANDARD.
PER APPLICAZIONI SPECIALI CONSULTARE
IL CATALOGO PRESSO I CENTRI ASSISTENZA
E RICAMBI.**

**PIECES POUR DES MOTEURS STANDARD.
POUR LES ADAPTATIONS CONSULTER
LE CATALOGUE AUPRES
DES AGENTS SERVICE.**

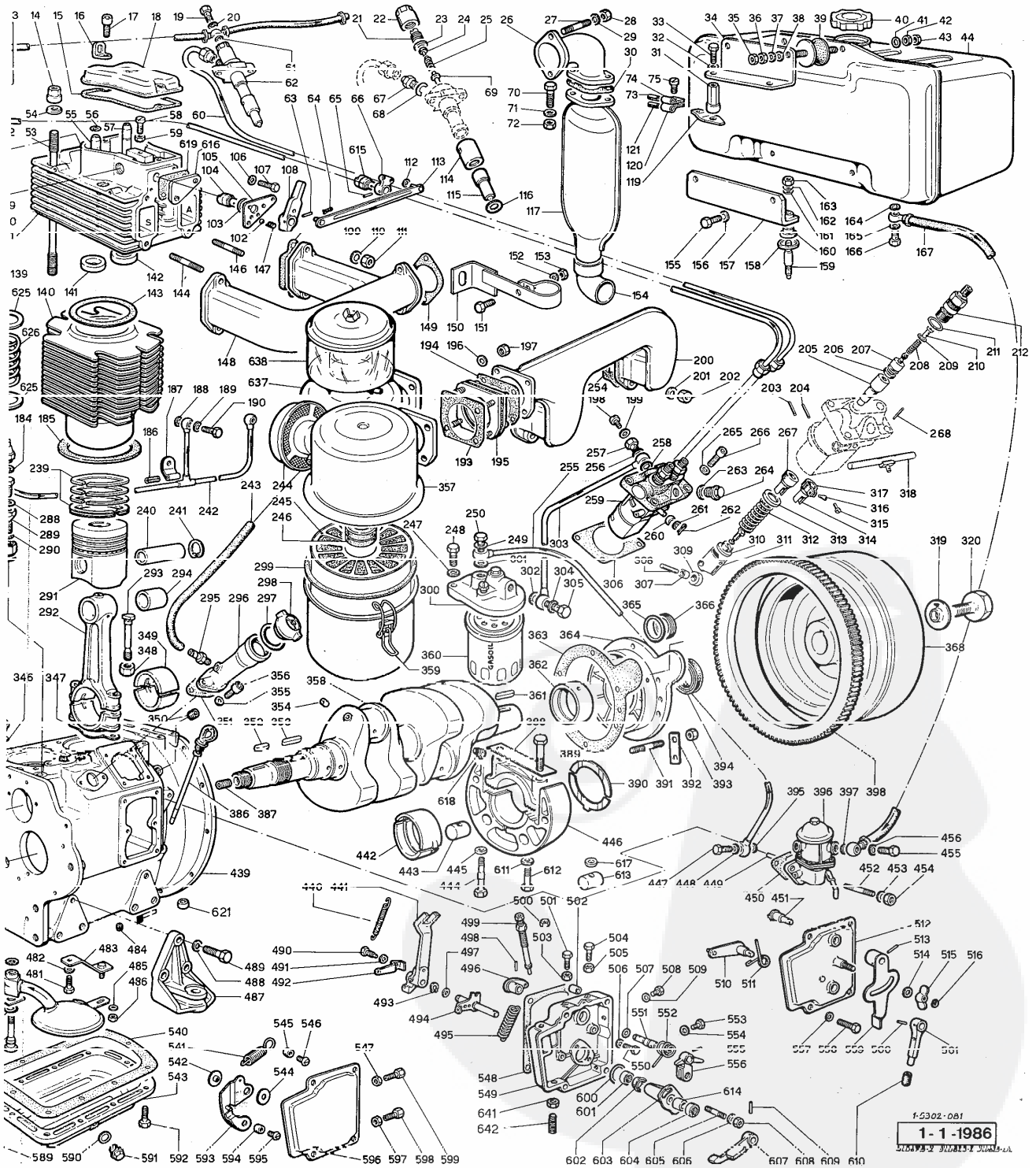
**SPARE PARTS FOR STAN
FOR SPECIAL APPLICATIO
CATALOG AT SERVICE CEI**



STANDARD ENGINE.
APPLICATIONS SEE MASTER
LIST OF SERVICE CENTERS.

ERSATZTEILE FÜR STANDARD-MOTOREN.
FÜR SONDERANFERTIGUNGEN SIEHE
ERSATZTEILKATALOG BEI SERVICE
WERKSTÄTTEN.

REPUESTOS PARA MOTORES STANDARD.
PARA APLICACIONES VEASE CATALOGO
EN LAS ESTACIONES SERVICE.





5.

L 27

5 LD 825.2 L

Gr. 5/2

673
832

5 LD 675.3
5 LD 825.2

	TAVOLA RICAMBI	MATR.
LEGENDA	SPARE PARTS TABLE	P.NO. ... 1.5302.081
	TABLEAU PIECES DETACHEES	REF.

21.11.1986

MOTORI TIPO/ENGINES TYPE/MOTEURS TYPE

5LD 675-2	5LD 825-2	5LD 825-2/L
---	---	---
3000	2600	2200
G/'-R.P.M.	G/'-R.P.M.	G/'-R.P.M.

Vedi/See/Voir

Libretto Uso e Manutenzione	
Use-Maintenance booklet 1.5302.076
Livret Emploi-Entretien	
Libretto Service	
Service directory 1.7968.002
Reseau S.A.V.	
Serie accessori	
Accessory set 2830.8140.081
Jeu accessoires	

Note/Remarks/Remarques

- F - alta movimentazione/fast moving part/haut mouvement.
- S - media movimentazione/medium moving part/moyen mouvement.
- D - bassa movimentazione/slow moving part/bas mouvement.
- E - ad esaurimento/exhausting part/piece en epuiseement.
- N - particolare nuovo o fornito su richiesta/
-new part or part supplied upon request/
-piece nouvelle ou fournie sur demande.
- A - valido dal motore.../from eng.S.No.../a partir du moteur...
(vedi Circolare Tecnica/see Service Letter/voir Circ.Techn.)
- B - valido fino al motore.../up to eng.S.No.../jusqu'au moteur...
(vedi Circolare Tecnica/see Service Letter/voir Circ.Techn.)
- I - intercambiabile/interchangeable.
(vedi Circolare Tecnica/see Service Letter/voir Circ.Techn.)
- V - stock vitale per Officine Service.
vital stock for Service Dealer.
stock vital pour Stations Service.
- C - stock vitale per Costruttori,Esportatori,Enti di Stato.
vital stock for Producers,Exporters,State Companies.
stock vital pour Constructeurs,Export.,Institut.de l'Etat.
- R - stock vitale per Rettifica.
vital stock for Grinding Workshops.
stock vital pour Usines de Rectification.
- 10/50/2-q.ta minima fornibile/min.supplied q.ty/q.te min.fournie.
- = gruppo completo/assembly/groupe complet.
- + componente del gruppo/assembly component/composant du groupe.

Serie guarnizioni/Gasket set ..672.8180.066 x 5LD675-2	
	822.8180.068 x 5LD825-2 - 825-2/L
Serie anelli/O.ring set	830.8150.009 - 672.8150.011
Serie lamierini/Lock.set	830.8190.011

Tipo motore	Blocco motore
Engine type	Short block
5LD675-2	6720.1560.074
5LD825-2 - 825-2/L	8220.1560.073

FIG. NO.	MATRICOLA P.NO	Q.TA Q.TY	NOTE REMARKS	GR.5-2 CYL. PAG. 2
1+	832.6622.005 D C	1	portello/insp.cover	5LD825-2 - 825-2/L
2+1=	=832.2568.074 S IC	1	CONVOGLIATORE PREDISP.PER RADIAT.OLIO SHROUD PRESET FOR OIL COOLER (std. per/for 5LD 625-2 - 625-2/L)	
3	9.9732.016 F C 10	1	vite/screw M 6 X 1 X 40	
4	9.7565.004 F C 10	1	rondella/washer	
5	276.2565.073 S	1	convogliatore/shroud std.	5LD675-2
6	276.9372.007 FV C	1	tubo mandata/delivery pipe	
7	9.4670.058 FV C 10	1	guarnizione/copper joint	
8	9.4670.058 FV C 10	1	guarnizione/copper joint	
9	9.1901.029 FVIC 10	1	bullone raccordo/connection bolt	
10	276.9571.014 FV C	1	tubo spurgo/bleeding pipe	
11	9.3240.018 FV 10	4	dado/nut	
12	9.7565.007 F C 10	4	rondella/washer	
13+	9.6780.057 FV C 10	4	prigioniero/stud M 8 X 30 (45)	
14	276.3206.016 FV C 10	8	dado/nut	
15+	276.4680.040 FV C 50	2	guarnizione/joint	
16+	904.8506.003 S AC 10	2	squadretta/angle bracket	
17+	9.9732.064 S 10	4	vite/screw M 8 X 1,25 X 30	
18+16+17=	=276.2125.081 S IC	2	CAPPELLO SCATOLA BILANCIERI ROCKER BOX CAP	
19	9.1901.029 FVIC 10	1	bullone raccordo/connection bolt	
20	9.4670.058 FV C 10	1	guarnizione/copper joint	
21	260.1570.016 DV C	2	bocchettone/filler cap	
22	260.4130.053 SV C	2	ghiera/ring nut	
23	260.4370.007 DV C 10	2	guarnizione/joint	
24	260.8010.002 DV C	2	sede/seat	
25	260.5800.038 SV C	2	molla/spring	
26	2760.2940.087 F C	1	curva scarico/exhaust elbow	
27	9.6780.008 DV C 10	2	prigioniero/stud M 8 X 20 (32)	
28	9.3240.019 FV C 10	2	dado/nut	
29	9.7565.007 F C 10	2	rondella/washer	
30+	276.4500.079 FV C 10	1	guarnizione/joint	
31	276.3206.045 SVIC 10	2	dado/nut	
32	9.7565.013 S C 10	2	rondella/washer	
33	9.1790.027 D C 10	2	bullone/bolt M 12 X 1,25 X 20	
34	2760.8865.091 D C	1	supporto/support	
35	9.3240.020 SV C 10	2	dado/nut	
36	9.3240.018 FV 10	2	dado/nut	
37	9.7565.007 F C 10	2	rondella/washer	
38	9.7625.012 FV C 10	2	rondella/washer	
39	9.8635.059 FV C	2	supporto antivib./vibration isolator	
40+	276.9043.015 FV C	1	tappo serbatoio/fuel tank cap	
41	9.7565.007 F C 10	2	rondella/washer	
42	9.3240.018 FV 10	2	dado/nut	
43	9.3240.020 SV C 10	2	dado/nut	
44+40=	=276.8101.032 S C	1	SERBATOIO COMPLETO/FUEL TANK std.	
	=276.8102.063 S	1	predisp.indic.livello/preset for gauge	

FIG. NO.	MATRICOLA P.NO		Q.TA Q.TY	NOTE REMARKS	GR.5-2 CYL. PAG.03
45	276.2086.061	S A	1	campana/bell alternat.	12 V 21 A
"	276.2086.066	S A	1	"	12 V 14 A
46	822.9718.087	S C	1	ventola/blaster fan	
47	9.7625.055	SV C 10	1	rondella/washer	
48	9.3203.015	FV C 10	1	dado/nut	
49+	276.8335.028	S C 10	6	spessore/shim	
"	276.8335.084	N	2	"	
50+	276.2135.052	SV C 10	2	cappello/cap	
51+	9.3240.010	FV C 10	4	dado/nut	
52	276.6615.011	F C	1	portapolverizzatore/nozzle holder	
"	276.6615.029	S C	1	" Bosch type	
53	276.6850.065	S C	8	prigioniero/stud	5LD675-2
"	832.6850.082	S C	8	"	5LD825-2 - 825-2/L
54	9.7625.055	SV C 10	8	rondella/washer	
55+	276.4845.057	FV CR10	2	guida v.scar./exhaust v.guide	std.
"	276.4845.041	FV CR10	2	"	+0,50
56+	276.1160.004	FV C 10	4	anello/circlip	
57+	276.4845.056	FV CR10	2	guida v.aspir./inlet v.guide	std.
"	276.4845.040	FV CR10	2	"	+0,50
58+	715.9820.080	S C 10	2	vite/screw	
59+	9.3240.008	FV 10	2	dado/nut	
60	276.9372.006	FV C	1	tubo mandata/delivery pipe	
61	9.4670.058	FV C 10	1	guarnizione/copper joint	
62	276.6615.011	F C	1	portapolverizzatore/nozzle holder	
"	276.6615.029	S C	1	" Bosch type	
63+	9.8430.034	S IC 10	1	spina/locating pin	
64+	9.2800.003	F C 10	2	copiglia/cotter pin	
65+	9.8430.034	S IC 10	1	spina/locating pin	
66+	2760.5200.190	D C	1	leva/lever	
67	260.7300.035	E	2	raccordo/connection	
"	500.7301.006	D I	2	"	
68	260.4650.037	DV C 10	2	guarnizione/joint	
69	260.1420.012	DV C	2	asta comando/control rod	
70	9.1770.006	S 10	2	bullone/bolt M 8 X 1,25 X 25	
71	9.7565.007	F C 10	2	rondella/washer	
72	9.3240.019	FV C 10	2	dado/nut	
73	276.5400.046	F C 10	1	manicotto/rubber sheating	
74	276.3616.018	S C 10	1	fascetta/strip fixing	
75	9.9790.011	D C 10	1	vite/screw M 5 X 0,8 X 14	
76	9.9732.075	S C 10	4	vite/screw M 8 X 1,25 X 50	
78	822.6927.075	D C	1	protezione/belt guard	
79	822.2440.114	FV C	1	cinghia/belt	
80	9.3203.015	FV C 10	1	dado/nut	
81	9.7625.055	SV C 10	1	rondella/washer	
82+168+169+170+171+172=				PULEGGIA COMPLETA COM.SOFFIANTE BLASTER DRIVING PULLEY	
	=672.6975.112	S C	1	x 5LD675-2	Diam.=93,5 R.P.M.=6224-3000/'
	=822.6975.113	D C	1	x 5LD825-2	Diam.=78 R.P.M.=6466-2600/'
				x 5LD825-2/L	R.P.M.=5470-2200/'
82+	672.8075.062	SV C	1	semipuleg./half-pulley	5LD675-2
"	822.8075.061	SV C	1	"	5LD825-2 - 825-2/L
83	9.1760.068	S C 10	4	bullone/bolt M 6 X 1 X 90	
84	9.7565.004	F C 10	4	rondella/washer	
85	904.3526.055	S C	1	distanz.per soffiante senza alternatore spacer for fan without alternator	
87	276.8565.029	S AC	1	statore/stator	
88	9.3002.022	FV C	1	cuscinetto/ball bearing	
89	9.2200.004	FV C 10	1	chiavetta/key	

FIG. NO.	MATRICOLA P.NO	Q.TA Q.TY	NOTE REMARKS	GR.5-2 CYL. PAG.04
90	9.2200.004	FV C 10	1 chiavetta solo per soffiante con altern. key for fan with alternator only	
91	9.2200.004	FV C 10	1 chiavetta/key	
92	9040.1157.039	FVIC	1 alternat./voltage alternator	12 V 14 A
"	9040.1157.019	FVIC	1	12 V 21 A
"	2760.1156.102	FV C	1	24 V 18 A
93	823.3450.047	D 10	1 distanz./spacer alternat.	12 V 14 A
"	823.3450.049	S C 10	1	12 V 21 A
"	823.3450.048	S C 10	1 distanz.per soffiante senza alternatore spacer for fan without alternator only	
94	9.3003.047	FV C	1 cuscinetto/ball bearing	
95+	9.4670.062	FVIC 10	2 guarnizione/copper joint	
96+	276.6045.022	FV C	2 perno bil./rocker arm shaft	
97+	9.1200.030	FV C 10	2 anello OR/rubber oil seal	
98+49+50+51+58+59+			GRUPPO BILANC.COMPLETO	
95+96+97+99+100+132=			ROCKER ARM ASS.Y	
=276.4330.019	F C	2		
99+		vedi/see fig.No 98+...	
100+	276.9850.045	S C	4 vite/screw	
101+13+49+50+51+55+			TESTA COMPLETA	
56+57+58+59+95+96+			CYLINDER HEAD	
97+98+99+100+104+107+				
131+132+133+134+135+				
136+141+142+144+146+				
179+180+616+619=				
=672.9200.135	S C	2	x 5LD675-2	
=822.9200.137	S C	2	x 5LD825-2 - 825-2/L	
101+13+55+56+57+106+			TESTA CON SEDI E GUIDE	
107+131+141+142+144+			CYLINDER HEAD WITH SEATS AND GUIDES	
146+616+619=				
=672.9200.136	S C	2	x 5LD675-2	
=822.9200.138	S C	2	x 5LD825-2 - 825-2/L	
102+	9.8245.004	F C 10	1 sfera/ball	
103+	9.1200.040	FV C 10	2 anello OR/rubber oil seal	
104+	276.6095.007	F C	1 perno/decompress.shaft	
105+	276.6370.062	S C	2 piastra/plate	
106+	9.7555.004	FV C 10	4 rondella/washer	
107+	9.1760.005	FV 10	4 bullone/bolt M 6 X 1 X 16	
108+63+64+65+66+102+			DECOMPRESSIONE COMPLETA	
103+104+105+112+113+			DECOMPRESSION ASS.Y	
147+615=				
=8220.4873.008	S C	1		
108+	276.5203.081	F C	1 leva/lever	
109+	276.4420.007	FV C 10	2 guarnizione/joint	
110	9.7565.007	F C 10	4 rondella/washer	
111	9.3240.019	FV C 10	4 dado/nut	
112+	9.7625.005	FV C 10	2 rondella/washer	
113+	276.9245.040	S C 10	2 tirante/tie rod	
114	276.4130.062	SV C	2 ghiera/ring nut	
115	276.6531.010	FVIC	2 polverizzatore/nozzle std.	
"	276.6531.096	FV C	2 " " Bosch type	
116	9.4670.009	FV C 10	2 guarnizione/copper joint	0,50
"	9.4670.010	FV C 10	"	1,00
"	9.4670.011	FV C 10	"	1,50

FIG. NO.	MATRICOLA P.NO		Q.TA Q.TY	NOTE REMARKS	GR.5-2 CYL. PAG.05
117	2830.5461.047	F C	1	marmitta/muffler	
119	276.8545.031	D C	1	staffa/brace	
120	276.3616.018	S C 10	1	fascetta/strip fixing	
121	276.5400.046	F C 10	1	manicotto/rubber sheating	
122	9.3240.033	FV 10	4	dado/nut	
123	9.7625.019	S 10	4	rondella/washer	
124	9.7565.011	F C 10	4	rondella/washer	
125+	9.6800.010	S C 10	4	prigioniero/stud M 10X25(40) x 5LD 675-2	
"	9.6800.020	F 10	4	M 10X35(50) x 5LD 825-2 - 825-2/L	
126	823.1105.014	F C	1	albero ventola/fan spindle	
127	276.6898.002	D C	1	profilato/molding x 5LD675-2	
128	9.7565.004	F C 10	1	rondella/washer	
129	9.1760.001	FV 10	1	bullone/bolt M 6 X 1 X 10	
130	9.7625.059	D C 10	2	rondella/washer	
131+	9.8990.011	F C 10	2	tappo/plug	
132+	9.9730.008	S 10	2	vite/screw M 6 X 1 X 10	
133+	276.6410.020	F C 10	4	piattello/cup	
134+	276.5755.040	FV C 10	4	molla/spring	
135+	276.6410.023	F C 10	4	piattello/retainer with half-collets	
136+	276.2135.063	FV C 10	2	cappellotto/cap	
137	276.1410.028	SVIC 10	4	asta punt./push rod 5LD675-2	
"	832.1410.029	FVIC	4	" " 5LD825-2 - 825-2/L	
138	276.9520.028	FVBC	4	tubo prot./guard tube 5LD675-2	
"	672.9520.049	FVAC	4	" " " " " " " "	
"	832.9520.032	FVBC	4	" " " " " " 5LD825-2 - 825-2/L	
"	822.9520.050	FVAC	4	" " " " " " " "	
139	276.1261.046	FVBC 10	4	anello tenuta/seal ring	
"	672.1261.069	FVAC 10	4	" " " " " " " "	
140	672.2380.101	FV C	2	cilindro/cylinder 5LD675-2	
"	832.2380.085	FV C	2	" " " " " " 5LD825-2 - 825-2/L	
141+	672.8000.075	FV CR10	2	sede v.sc./exh.v.seat 5LD675-2	
"	822.8000.073	FV CR10	2	" " " " " " 5LD825-2 - 825-2/L	
142+	672.8000.074	FV CR10	2	sede v.asp./inl.v.seat 5LD675-2	
"	822.8000.072	FV CR10	2	" " " " " " 5LD825-2 - 825-2/L	
143+	672.4730.096	SV C 10	2	0,70 x 5LD675-2 guarn.testa/head joint	
"	672.4730.083	DV C 10	2	0,80 " " " " " "	
"	672.4730.097	DV C 10	2	0,90 " " " " " "	
"	672.4730.098	SV C 10	2	1,00 " " " " " "	
"	672.4730.135	DV C 10	2	1,10 " " " " " "	
"	822.4730.104	SV C 10	2	0,70 x 5LD825-2 - 825-2/L	
"	832.4730.023	FV C 10	2	0,80 " " " " " "	
"	822.4730.105	DV C 10	2	0,90 " " " " " "	
"	822.4730.094	SV C 10	2	1,00 " " " " " "	
"	822.4730.136	SV C 10	2	1,10 " " " " " "	
144+	9.6780.057	FV C 10	4	prig.scar./exhaust stud M 8 X 30 (45)	
146+	9.6780.049	D C 10	4	prig.asp./intake stud M 8 X 20 (36)	
147+	276.5695.002	FV C 10	1	molla/spring	
148	276.2485.033	F C	1	collett.scarico/exhaust manifold std.	
"	2760.2485.058	S	1	collett.prolungato/extendedexh.manifold	
149+	276.4500.079	FV C 10	1	guarnizione/joint	
150	2760.8546.014	F C	1	staffa/brace	
151	9.1780.031	FV 10	1	bullone/bolt M 10 X 1,5 X 25	
152	9.7565.011	F C 10	1	rondella/washer	
153	9.3240.033	FV 10	1	dado/nut	
154	2910.9170.028	F C	1	terminale/muffler end	
155	9.1780.003	D 10	2	bullone/bolt M 10 X 1,5 X 18	
156	9.7565.011	F C 10	2	rondella/washer	
157	2760.8865.090	D C	1	supp.serbi./tank supp. 5LD675-2	
"	8320.8866.002	D C	1	" " " " " 5LD825-2 - 825-2/L	
158	276.7980.042	S C 10	2	scodellino/cup	
159	276.6487.004	S C 10	2	piolo/pivot	

FIG. NO.	MATRICOLA P.NO	Q.TA Q.TY	NOTE REMARKS	GR.5-2 CYL. PAG.06
160	276.8960.012	FV C 10	2	tampone/buffer
161	9.7565.007	F C 10	2	rondella/washer
162	9.7625.012	FV C 10	2	rondella/washer
163	9.3240.020	SV C 10	2	dado/nut
164	9.4670.059	FVIC 10	1	guarnizione/copper joint
165	9.4670.059	FVIC 10	1	guarnizione/copper joint
166	9.1901.045	FVIC 10	1	bullone raccordo/connection bolt
167	276.9372.003	SV C 10	1	tubo comb./fuel pipe
168+	672.6320.028	D C 10	1	piastrina/plate 1,00 x 5LD675-2
"	672.6320.029	D C 10	1	" " 2,00
"	672.6320.030	D C 10	2	" " 0,50
"	822.6320.031	D C 10	1	" " 1,00 x 5LD825-2 - 825-2/L
"	822.6320.032	D C 10	1	" " 2,00
"	822.6320.033	D C 10	2	" " 0,50
169+	9.3240.008	FV 10	4	dado/nut
170+	9.7565.004	F C 10	4	rondella/washer
171+	9.6760.006	F 10	4	prigioniero/stud M 6 X 16 (25)
172+	672.8075.060	D C	1	semipuleg./half-pulley 5LD675-2
"	822.8075.059	S C	1	" " 5LD825-2 - 825-2/L
173	832.8335.059	D C	1	spessore/shim 5LD825-2 - 825-2/L
174	9.1770.002	FV 10	2	bullone/bolt M 8 X 1,25 X 16
175	9.7565.007	F C 10	2	rondella/washer
176	832.6898.010	D C	1	profilato/molding 5LD825-2 - 825-2/L
177	9.1760.003	F 10	2	bullone/bolt M 6 X 1 X 12
178	276.5065.050	S C	1	lamiera/airtight plate 5LD675-2
"	832.5065.080	S C	1	" " 5LD825-2 - 825-2/L
179+	276.9685.019	FV CR10	2	valv.scar./exh. valve 5LD675-2
"	822.9685.053	FV CR10	2	" " 5LD825-2 - 825-2/L
180+	276.9652.015	FV CR10	2	valv.asp./inlet valve 5LD675-2
"	822.9652.041	FV CR10	2	" " 5LD825-2 - 825-2/L
181	276.1261.046	FVBC 10	4	anello tenuta/seal ring
"	672.1261.069	FVAC 10	4	" " " "
182	276.7215.028	FV C	4	punteria/tappet
183+325+627=	=9040.6745.031	FVAC	1	PRESSOSTATO COMPLETO OIL PRESSURE SWITCH
184	276.4670.014	SV C 10	1	guarnizione/copper joint
185+	822.4410.055	FV C 10	2	guarnizione/joint 0,50
186	276.5390.008	D C 10	2	manicotto/rubber sheating
187	276.3617.023	D C 10	2	fascetta/strip fixing
188	9.4670.058	FV C 10	2	guarnizione/copper joint
189	9.4670.058	FV C 10	2	guarnizione/copper joint
190	9.1901.054	FVIC 10	2	bullone raccordo/connection bolt
193+	824.4701.055	FV C 10	1	guarnizione/joint
194+	824.4701.055	FV C 10	1	guarnizione/joint
195	824.8636.028	SV C	1	supporto antiv./vibration isolator
196	9.7565.007	F C 10	8	rondella/washer
197	9.3240.018	FV 10	0	dado/nut
198	9.9080.037	FV C 10	1	tappo/deaeration plug
199	9.4775.196	SV C 10	1	guarnizione/joint
200	822.2486.042	S C	1	collettore aspirazione/inlet manifold
201	9.7565.007	F C 10	4	rondella/washer
202	9.3240.018	FV 10	4	dado/nut
203	277.6230.075	SV C 10	1	perno/pin
204	277.6230.075	SV C 10	1	perno/pin
205	283.6578.013	FV C	2	pompante/injection plunger std.
"	283.6578.020	FV C	2	" " Bosch type
206	271.4760.015	FV C 10	2	guarnizione/joint
207	500.9672.012	F C	2	valvolina mandata/delivery valve
208	271.5755.034	SV C 10	2	molla/spring

FIG. NO.	MATRICOLA P.NO	Q.TA Q.TY	NOTE REMARKS	GR.5-2 CYL. PAG.07
209	271.8335.029 SV C 10	2	spessore/shim	
210	271.7470.003 FV C 10	2	riempitore/filler	
211	9.1200.031 FV C 10	2	anello OR/rubber oil seal	
212	271.7265.008 FV C 10	2	raccordo/connection	
213	2760.5041.020 FV C	1	interruttore/key switch	
215	9.7625.092 D C 10	2	rondella/washer	
216	9.1760.032 S C 10	2	bullone/bolt M 6 X 1 X 14	
217	276.2145.014 FVAC	1	cappuccio/rubber cap	
218	276.6740.088 FVAC 10	1	presa regol./inlet regul.Saprisa	
"	276.6740.089 SVAC 10	1	" " Ducati	
"	276.6740.090 SVAC 10	1	" " Ducati con spia c.b./with c.b.light.	
219	2760.7362.027 FVIC	1	regolat.tens./voltage regul.12 V-14/21 A	
"	8220.7362.155 N	1	" " 24 V-18 A	
"	9040.7362.066 FVIC	1	12 V-14/21 A con spia c.b./with c.b.light	
"	8220.7362.156 SV C	1	24 V-18 A	
220	9.9731.092 S	10	vite/screw M 8 X 1,25 X 14	
221	276.3526.010 S	10	distanziale/spacer	
222	9.1760.003 F	10	bullone/bolt M 6 X 1 X 12	
223	9.7625.059 D C 10	2	rondella/washer	
224	276.5065.049 S C	1	lamiera/airtight plate 5LD675-2	
"	832.5065.078 S C	1	" " 5LD825-2 - 825-2/L	
225	9.7565.007 F C 10	1	rondella/washer	
226	9.1770.002 FV	10	bullone/bolt M 8 X 1,25 X 16	
227	276.3350.021 D	1	deflettore/deflector 5LD675-2	
228	9.7565.007 F C 10	1	rondella/washer	
229	2830.6491.005 FV C	1	pipetta/pipe elbow	
230	9.9730.024 DV C 10	1	vite/screw M 8 X 1,25 X 16	
231	832.3350.031 S C	1	deflettore/deflector 5LD825-2 - 825-2/L	
232	9.7565.007 F C 10	1	rondella/washer	
233	9.1770.002 FV	10	bullone/bolt M 8 X 1,25 X 16	
234	9.3240.048 FV C 10	2	dado/nut	
235	9.7625.026 S	10	rondella/washer	
236	9.7565.013 S C 10	2	rondella/washer	
237+	9.6820.014 D	10	prigioniero/stud M 12 X 30 (48)	
238	9.8965.003 FV C 10	1	tappo/plug	
239+	276.8210.052 FV C 10	2	std. x 5LD675-2 serie segm./ring set	
"	276.8210.053 F CR10	2	+0,50	
"	276.8210.054 F CR10	2	+1,00	
"	832.8210.067 FV C 10	2	std. x 5LD825-2 - 825-2/L	
"	832.8210.068 F CR10	2	+0,50	
"	832.8210.069 F CR10	2	+1,00	
240+	279.8480.021 S C	2	spinotto/gudgeon pin 5LD675-2	
"	832.8480.027 S C	2	" " 5LD825-2 - 825-2/L	
241+	9.1240.026 FV C 10	4	anello seeg./snap ring 5LD675-2	
"	9.1240.031 FV C 10	4	" " 5LD825-2 - 825-2/L	
242	822.9455.061 S C	1	tubo lubrificazione/lubric.pipe	
243	822.9400.056 S C	1	tubo depressione/suction line	
244+	276.2135.093 F IC	1	cappello/air inlet cover	
245+	276.5496.044 E	1	massa filtrante/filtering element	
"	276.5496.074 FV C	1	" " " " " " " "	
246+	9.1261.056 FV C 10	1	anello tenuta/seal ring	
247	9.7555.008 FV C 10	2	rondella/washer	
248	9.1780.005 FV	10	bullone/bolt M 8 X 1,5 X 28	
249	9.4670.061 FVIC 10	1	guarnizione/copper joint	
250	9.1901.032 FVIC 10	1	bullone raccordo/connection bolt	
254+	276.4420.008 FV C 10	2	guarnizione/joint	
255	2760.9373.002 D C	1	tubo combustibile/fuel pipe	
256	9.4670.060 FVIC 10	1	guarnizione/copper joint	
257	9.1901.031 FVIC 10	1	bullone raccordo/connection bolt	
258	9.4670.060 FVIC 10	1	guarnizione/copper joint	

FIG. NO.	MATRICOLA P.NO	Q.TA Q.TY	NOTE REMARKS	GR.5-2 CYL. PAG.08
259	276.6590.034 F C	1	pompa iniezione/injection pump std.	
"	276.6590.042 F C	1	" " " "	Bosch
260	276.1580.023 F C	10	bussola/bushing	
261	9.7626.017 D C	10	rondella/washer	
262	9.2800.003 F C	10	copiglia/cotter pin	
263	277.4650.052 DV C	10	guarnizione/joint	
264	277.9080.035 SV C	10	tappo/cap	
265	9.7565.007 F C	10	4 rondella/washer	
266	9.9732.074 S C	10	4 vite/screw M 8 X 1.25 X 20	
267	260.4850.009 FV C	1	guida/guide	
268	9.8400.048 D	10	1 spina/taper pin	
272	2760.8902.094 D C	1	supporto/dashboard support	
273	9.1861.044 D C	10	1 bullone/bolt	
274	276.5111.003 S C	10	1 lamierino/tabwasher	
275	276.7670.084 N	1	1 rondella/washer	
276	9.8430.036 D C	10	1 spina/locking needle	
277	276.3495.040 S C	10	1 distanziale/spacer	
278+279+280=			INGRANAGGIO INTERMEDIO	
	=276.4935.048 F C	1	INTERMEDIATE GEARWHEEL	
279+	276.1685.024 SV C	1	bronzina/bearing	
280+	276.1685.024 SV C	1	bronzina/bearing	
281	276.1300.067 DV C	10	1 anello reggispinta/thrust washer	
282	276.4320.021 S	10	1 grano/dowel pin	
283	276.6130.025 D C	1	perno/gear shaft	
284	278.5840.067 F I	1	mot.avv./start.engine HP 2,5 Bosch type	
285	9.8965.037 F C	10	1 tappo/plug	
286	9.4670.039 FV C	10	1 guarnizione/copper joint	
287	9.1200.038 FV C	10	1 anello OR/rubber oil seal	
288	9.4670.058 FV C	10	1 guarnizione/copper joint	
289	822.7330.128 SV C	1	1 raccordo/connection	
290	9.4670.058 FV C	10	1 guarnizione/copper joint	
291+239+240+241=			PISTONE COMPLETO/PISTON SET	
	=672.6500.153 FV C	2	std. x 5LD675-2	
	=672.6500.156 F CR	2	+0,50 " "	
	=672.6500.157 F CR	2	+1,00 " "	
	=822.6500.154 FV C	2	std. x 5LD825-2 - 825-2/L	
	=822.6500.155 F CR	2	+0,50 " "	
	=822.6500.158 F CR	2	+1,00 " "	
292+293+294+348=			BIELLA COMPLETA/CONNECTING ROD	
	=276.1526.018 F C	2	x 5LD675-2	
	=832.1525.096 F C	2	x 5LD825-2 - 825-2/L	
293+	270.1860.007 FV C	10	4 bullone/bolt	
294+	270.1630.006 FV CR	10	2 bronzina/small end bearing 5LD675-2	
"	832.1630.011 FV CR	2	" " " " 5LD825-2 - 825-2/L	
295	822.7301.036 S C	10	1 raccordo/connection std. M 16 X 1,5	
296	823.6902.036 SV C	1	1 prolunga/extension std. diam.= 54	
297+	822.4775.250 DV C	10	1 guarnizione/joint std.	
298+297=				
	=822.9032.027 FV C	1	TAPPO RIF.OLIO/FILLER CAP std. diam.= 66	
299+	276.4776.029 S C	10	1 guarnizione/joint	
300+360=			FILTRO COMBUSTIBILE COMPLETO	
	=276.3730.037 FVIC	1	FUEL FILTER	

FIG. NO.	MATRICOLA P.NO	Q.TA Q.TY	NOTE REMARKS	GR.5-2 CYL. PAG.09
301	9.4670.061	FVIC 10	1	guarnizione/copper joint
302	9.4670.061	FVIC 10	1	guarnizione/copper joint
303	2760.9372.060	D C	1	tubo combustibile/fuel pipe
304	9.4670.061	FVIC 10	1	guarnizione/copper joint
305	9.1901.032	FVIC 10	1	bullone raccordo/connection bolt
306+	276.4580.002	SV C 50	4	guarnizione/joint 0,10
"	276.4580.009	S C 50	1	" " 0,50
"	672.4580.068	N 50	1	" " 0,05
307	260.1970.054	DV C	2	bussola/sleeve
308	260.6230.060	SV C	2	perno/pin
309	260.7770.020	SV C	2	rullo/roller
310	260.6400.024	D	2	piattello/retainer
311	260.7215.017	FV C	2	punteria/tappet
312	260.5625.002	SV C	2	molla/spring
313	260.7980.020	SV C	2	scodellino/cup
314	261.1970.055	DV C	1	bussola/sleeve
315	260.6230.069	DV C	1	perno/pin
316	261.9865.040	DV C	1	vite/screw
317	261.8235.014	SV C	1	settore/sector
318	261.1415.006	DV C	1	asta comando/control rod
319	276.5111.005	F C 10	1	lamierino/tabwasher
320	276.1861.045	S C	1	bullone/bolt std.
"	2760.1861.056	D C	1	per frizione/for clutch P.& V. F 187
321	9040.2615.021	F C	1	coperchio/cover
322	9040.6612.063	S AC	1	spia olio/pressure oil warning
323	9040.5177.117	F AC 10	2	lampadina/lamp
324	9040.6612.064	S AC	1	spia batteria/battery warning
325+	5000.9180.056	FVA 10	4	terminale/faston
326	5000.2118.047	N 10	4	capocorda/cable-end
327	2790.5400.060	N	2	manicotto/rubber sheathing
328	2790.3617.017	D 10	1	fascetta/strip fixing
329	2760.3617.020	S C 10	1	fascetta/strip fixing
330	9.1770.004	F C 10	4	bullone/bolt M 8 X 1,25 X 20
331	9.7555.007	F C 10	4	rondella/washer
332	9.9732.075	D	1	vite/screw M 8 X 1,25 X 50
333	9.7555.007	DV C 10	1	rondella/washer
334	9.3260.059	SV C 10	1	dado/nut
335	276.5111.025	D C 10	1	lamierino/tabwasher
336	276.4910.019	S	1	ingranaggio/gearwheel
337	9.1770.005	F 10	2	bullone/bolt M 8 X 1,25 X 22
338	276.5111.007	S C 10	1	lamierino/tabwasher
339	9.2280.056	FV C 10	1	chiavetta/key
340	276.6275.057	S C	1	piastra/plate
341	9.9730.032	S 10	2	vite/screw M 8 X 1,25 X 45
342	9.7555.007	DV C 10	2	rondella/washer
343+344=	=276.3740.132	FVIC	1	FILTRO OLIO COMPLETO OIL FILTER
343+	276.9220.118	S AC	1	testina/filter head
344+	276.2175.136	FVAC	1	cartuccia olio/oil filter element
345+	9.8965.023	D C 10	1	tappo/plug
346+	9.4670.058	FV C 10	1	guarnizione/copper joint
347			
348+	9.3203.034	FVIC 10	4	dado/nut
349	291.1640.445	FV C	2	bronz.biella/large end bushing
"	291.1640.448	F CR	2	" " std.
"	291.1640.449	F CR	2	" " -0,25
350+	9.9765.009	D C 10	1	vite/screw M 8 X 1,25 X 10
351+	276.4775.80	N 50	1	guarnizione/joint
352+	9.2280.056	FV C 10	1	chiavetta/key

FIG. NO.	MATRICOLA P.NO	Q.TA Q.TY	NOTE REMARKS	GR.5-2 CYL. PAG.10
353+	9.2280.056 FV C 10	1	chiavetta/key	
354+	822.9000.073 FV C 10	4	tappo/expansion plug	
355	9.7555.007 DV C 10	2	rondella/washer	
356	9.9732.074 S C 10	2	vite/screw M 8 X 1,25 X 20	
357+244+245+246+299+ 359= =822.3703.047 SV C		1	FILTRO ARIA CON CAPPELLOTTA AIRCLEANER WITH AIR INLET COVER. std.	
357+245+246+299+359= =8220.3703.062 DV C		1	FILTRO ARIA SOTTOCOPERTURA AIR CLEANER UNDER ENCLOSURE	
358+352+353+354+361+ 387= =672.1050.188 S C =822.1050.190 S C		1 1	ALBERO A GOMITO/CRANKSHAFT x 5LD675-2 x 5LD825-2 - 825-2/L	
359+	276.4115.048 F C 10	2	gancio/hook	
360+	276.2175.046 FVAC	1	cartuccia comb./fuel filter element	
361+	9.2280.056 FV C 10	1	chiavetta/key	
362	822.1611.078 FV C	1	bronz.l.volano/flywheel side bear.	std.
"	822.1611.062 F CR	1	"	-0,25
"	822.1611.063 F CR	1	"	-0,50
"	822.1611.064 F CR	1	barenabile/bearing reamed	
363+	276.4701.013 S C 50	1	guarnizione/joint	
364+394+618= =822.8676.095 S C		1	SUPPORTO LATO VOLANO FLYWHEEL SIDE SUPPORT	
365+	9.1200.036 FV C 10	1	anello OR/rubber oil seal	
366+	276.2710.039 S C 10	1	coperchio/cover	
368+398= =276.9881.054 S C =2760.9883.093 N =2760.9882.073 S C		1 1 1	VOLANO+CORONA/FLYWHEEL+CROWN GEAR x 5LD675-2 - 825-2 std. x 5LD825-2/L std. per frizione/for clutch P.&V. F 187	
369	9.3240.043 DV C 10	1	dado/nut	
370	9.7701.009 D C 10	1	rondella/washer	
371	276.4935.034 S C	1	ingranaggio/gearwheel	
372+	276.2650.008 S C	1	coperchio pompa olio/lub.oil pump cover	
373+	9.2200.002 S C 10	1	chiavetta/key	
374+372+373+375+376+ 405+407= =834.6605.020 F C		1	POMPA OLIO COMPLETA LUB.OIL PUMP ASS.Y	
375+	9.1200.038 FV C 10	1	anello OR/rubber oil seal	
376+	9.9765.055 D C 10	1	vite/screw M 12 X 1,25 X 10	
377+	276.1600.055 FVIC	1	bronz.alb.camme/camshaft bearing	std.
"	276.1600.056 F ICR	1	"	-0,25
"	276.1600.057 F ICR	1	"	-0,50
"	276.1600.058 S ICR	1	"	-1,00
"	276.1600.059 S ICR	1	+1,00 su diam.esterno/α ext.diameter	
378	9.9765.018 D C 10	1	vite/screw M 10 X 1,5 X 16	
379	672.1011.072 S C	1	albero camme/camshaft	
380	9.9765.053 D C 10	1	vite/screw M 5 X 0,8 X 0	
381	9.8965.021 S C 10	1	tappo/plug	
382	9.4670.058 FV C 10	1	guarnizione/copper joint	
383+	276.4730.016 D C 50	1	guarnizione/joint	
384+	9.8965.021 S C 10	1	tappo/plug	

FIG. NO.	MATRICOLA P.NO		Q.TA Q.TY	NOTE REMARKS	GR.5-2 CYL. PAG.11
385+	9.4670.058	FV C	10	1	guarnizione/copper joint
386	276.1400.027	F C	10	1	asta liv./diastick 5LD675-2 std.
"	2760.1400.037	D C		1	" " " " prolung./extend.
"	832.1400.055	F C	10	1	" " 5LD825-2 - 825-2/L std.
"	8320.1400.060	D C		1	" " " " prolung./extend..
387+	9.9765.108	N	10	1	vite/screw
388+	822.5111.074	DV C	10	1	lamierino/tabwasher
389+	9.1780.029	D C	10	2	bullone/bolt M 10 X 1,5 X 75
390	832.1257.012	FV C		2	anello reggispinta/thrust washer
391+	9.4799.045	SV C	10	4	prigioniero/stud M 8 X 21 (40)
392	276.6330.059	D B	10	3	piastrina/safety plate
393	9.3203.047	FV C	10	6	dado/nut
394+	9.1213.135	FV C		1	anello tenuta/seal ring
395	9.4670.059	FVIC	10	1	guarnizione/copper joint
396	276.6585.030	FV C		1	pompa alimentazione/feed pump
397	9.4670.059	FVIC	10	1	guarnizione/copper joint
398+	276.2816.010	F C		1	corona avviamento/crown gear
399	276.1861.046	D C		1	bullone/bolt
400	9.9730.026	F	10	2	vite/screw M 8 X 1,25 X 20
401	9.4670.016	FV C	10	1	guarnizione/copper joint
402	9.1901.051	FVIC	10	1	bullone raccordo/connection bolt
403	9.4670.058	FV C	10	1	guarnizione/copper joint
404	9.4670.058	FV C	10	1	guarnizione/copper joint
405+	9.9730.100	F	10	2	vite/screw M 8 X 1,25 X 25
406	9.1901.051	FVIC	10	1	bullone raccordo/connection bolt
407+	9.7555.007	DV C	10	2	rondella/washer
408	9.4670.058	FV C	10	1	guarnizione/copper joint
409	9.4670.058	FV C	10	1	guarnizione/copper joint
410	276.9485.022	S C		1	tubo olio/oil pipe
411	9.2200.011	D C	10	1	chiavetta/key
412+	9.2200.010	D	10	1	chiavetta/key
413	9.1770.004	F C	10	2	bullone/bolt M 8 X 1,25 X 20
414	9.7565.007	F C	10	2	rondella/washer
415+	276.1702.008	SV C	10	1	bronzina/bearing
416+	276.1702.008	SV C	10	1	bronzina/bearing
417+	276.1300.074	D C	10	1	anello reggispinta/thrust bearing
418+	9.8245.017	S	10	8	sfera/ball
419+	276.4130.063	SV C	10	1	ghiera/ring nut
420+	276.2086.029	D		1	campana/governor bell
421+	9.1240.007	FV C	10	1	anello seeger/snap ring
422+	9.3100.032	S C		1	cuscinetto/ball bearing
423+	276.1160.015	D C	10	1	anello/circlip
424+	276.6000.042	D C	10	1	pastiglia/drive rod
425+	9.1240.018	D	10	1	anello seeger/snap ring
426+	276.2085.041	D		1	campana/governor bell
427+	823.2471.045	D C		1	collare/collar
428+	276.5111.022	D C	10	1	lamierino/tabwasher
429+	276.8365.017	S	10	2	spina/pin
430+	260.5496.004	SV C		1	massa regolatore/governor weight
431+				vedi/see fig.No. 466+...
432+	9.3010.055	N		1	cuscinetto/ball bearing
433+	276.1160.012	N	10	1	anello/circlip
434+				vedi/see fig.No. 466+...
435	276.3206.018	SV C		1	dado/nut
436	276.5111.004	D C	10	1	lamierino/tabwasher
437	822.4936.071	F IC		1	ingranaggio/gearwheel
438+	822.1611.079	FV C		1	bronz.L.distrib./gear side bearing std.
"	822.1611.070	F CR		1	" " " " -0,25
"	822.1611.071	F CR		1	" " " " -0,50
"	822.1611.072	F CR		1	barenabile/bearing reamed

FIG. NO.	MATRICOLA P.NO	Q.TA Q.TY	NOTE REMARKS	GR.5-2 CYL. PAG.12
	439+237+345+346+350+ 365+366+377+384+385+ 391+438+452+484= =822.1510.178 S C	1	BASAMENTO COMPLETO CRANKCASE	
440+	276.5550.015 SV C	10	1 molla/spring	
	441+490+491+492+493+ 494+497= =822.5200.199 S	1	LEVA COMANDO POMPA INIEZIONE INJECTION PUMP CONTROL LEVER	
442	822.1611.061 FV C	1	1 bronz.supp.cent./middle supp.bear, std.	
"	822.1611.073 F CR	1	"	-0,25
"	822.1611.074 F CR	1	"	-0,50
"	822.1611.075 F CR	1	1 barenabile/bearing reamed	
443+	822.5957.003 SV C	10	1 nottolino/lockpin	
444+	276.1881.042 F C	10	1 bullone/bolt	
445+	9.7625.019 S	10	1 rondella/washer	
	446+388+389+443+444+ 445+611+612+613+617+ 618= =672.8660.037 S C	1	SUPPORTO CENTRALE COMPLETO MIDDLE SUPPORT ASS.Y	
447	9.1901.030 FVIC	10	1 bullone raccordo/connection bolt	
448	9.4670.059 FVIC	10	1 guarnizione/copper joint	
449	276.7200.042 S C	10	1 puntalino/drive rod	
450+	560.4580.047 FVIC	50	1 guarnizione/joint 1,00	
"	560.4580.049 FV C	10	" 0,50	
"	560.4580.050 FV C	10	" 0,80	
451+	276.6141.023 D C	10	1 perno/pin	
452+	9.6780.007 S	10	2 prigioniero/stud M 8 X 20 (32)	
453			
454	9.3203.047 FV C	10	2 dado/nut	
455	9.1901.030 FV C	10	1 bullone raccordo/connection bolt	
456	9.4670.059 FVIC	10	1 guarnizione/copper joint	
460+	822.9455.059 D		1 tubo lubrificazione/lub.oil pipe	
461	9.3260.004 DV C	10	1 dado/nut	
462	276.5111.027 D C	10	1 lamierino/tabwasher	
463	276.4935.037 S		1 ingranaggio/gearwheel	
464+	276.1085.004 D C		1 albero/speed governor shaft	
465+	276.1300.073 D C	10	1 anello reggispira/thrust washer	
	466+412+415+416+417+ 418+419+420+421+422+ 423+424+425+426+427+ 428+464+465= =823.7362.120 S C	1	REGOLATORE DI GIRI COMPLETO SPEED GOVERNOR ASS.Y	std.
	466+415+416+417+429+ 430+431+432+433+434+ 465+467+468+469+470+ 471+472+473= =6720.7362.121 S C	1	REGOLATORE DI GIRI COMPLETO SPEED GOVERNOR ASSEMBLY	per gruppi elettrog./for generating sets
	466+415+416= =276.8590.018 D C	1	SUPPORTO ALBERO REGOLATORE GOVERNOR SHAFT SUPPORT	
467+	9.1240.018 D	10	1 anello seeger/snap ring	
468+		vedi/see fig.No. 466+....	

FIG. NO.	MATRICOLA P.NO		Q.TA Q.TY	NOTE REMARKS	GR.5-2 CYL. PAG.13
469+	276.5168.015	N	10 1	lamierino/tabwasher	0,20
"	276.5168.014	N	10 1	"	0,30
"	276.5168.017	N	10 1	"	0,50
470+	276.8805.005	D C		supporto masse/weight support	
471+	260.5496.004	SV C		massa regolatore/governor weight	
472+	260.6330.018	D C		piastrina/safety plate	
473+	9.1755.002	D	10 2	bullone/bolt M 5 X 0,8 X,12	
474+	822.4560.017	DV C	10 1	guarnizione/joint	
475	822.2615.037	D C		coperchio/cover	
476	822.4470.051	DV C	10 1	guarnizione/copper joint	
477	276.1970.073	D C	10 2	bussola/sleeve	
478	9.6800.055	D C	10 2	prigioniero/stud M 10 X 25 (37)	
479	9.7565.011	F C	10 2	rondella/washer	
480	9.3240.033	FV	10 2	dado/nut	
481	9.1770.002	FV	10 1	bullone/bolt M 8 X 1,25 X 16	
482	9.7565.007	F C	10 1	rondella/washer	
483	276.1595.012	D C		braccio/arm 5LD675-2	
"	832.1595.034	D C		braccio/arm 5LD825-2 - 825-2/L	
484+	9.9765.104	D C	10 2	vite/screw	
485	9.7625.012	FV C	10 1	rondella/washer	
486	9.3240.018	FV	10 1	dado/nut	
487	276.6428.028	D C		4 piede/engine mount 5LD675-2	
"	832.6428.039	S C		4 piede/engine mount 5LD825-2 - 825-2/L	
488	9.7565.013	S C	10 12	rondella/washer std.	
"	9.7626.018	N	10 1	rondella fissaggio staffa marmitta washer for muffler bracket fixing	
489	9.1790.025	F C	10 12	bullone/bolt M 12 X 1,25 X 30 std.	
"	9.1790.026	D C	10 1	bullone fiss.staffa marmitta-M 12X1,25X35 bolt for muffler bracket fixing	
490+	276.1862.009	N	10 1	bullone/bolt	
491+	9.7565.004	F C	10 1	rondella/washer	
492+	276.5270.081	D C	10 1	leva/lever	
493+	9.1240.002	SV	10 1	anello seeger/snap ring	
494+	822.6110.073	D C		perno/pin	
495	904.5655.046	FVIC	10 1	molla/spring 1500-1800 G/1'- R.P.M.	
"	904.5655.048	SV C	10 1	" 2200-3000 G/1'- R.P.M.	
496+	276.5270.045	D C	10 1	leva/lever	
497+	9.7625.010	FV C	10 1	rondella/washer	
498+	9.8430.023	S C	10 1	spina/locating pin	
499	276.2380.090	S C		1 cilindretto/plunger 5LD675-2	
"	276.2380.091	D IC		" 5LD825-2 - 825-2/L	
"	294.2380.092	D I		1 correttore di coppia/torque control	
500	9.3240.063	DV C	10 1	dado/nut	
501+	9.1760.023	D C	10 1	bullone/bolt M 6 X 1 X 30	
502+	276.1970.071	D C	10 2	bussola/sleeve	
503+	9.3240.008	FV	10 1	dado/nut	
504+	9.1760.028	D C	10 1	bullone/bolt std. M 6 X 1 X 35	
"	9.1760.041	D IC	10 1	x 1500-1800 G/1'- R.P.M. -M 6 X 1 X40	
505+	9.3240.008	FV	10 1	dado/nut	
506+	9.7555.004	FV C	10 2	rondella/washer	
507+	9.1200.001	FV C	10 1	anello OR/rubber oil seal	
508+	9.1760.001	FV	10 1	bullone/bolt M 6 X 1 X 10	
509				
510+			vedi/see fig.No 561+...	
511+	276.5680.053	S C	10 1	molla/spring	
512+514+515+516+517+518+				COMANDO A MANO	
514+515+516+517+518+				HAND CONTROL	
559+560+561+610=					
=276.2515.070	F C		1		

FIG. NO.	MATRICOLA P.NO	Q.TA Q.TY	NOTE REMARKS	GR.5-2 CYL. PAG.14
513+	9.8430.023	S C 10	1 spina/locating pin	
514+	9.7625.007	S C 10	1 rondella/washer	
515+	9.3200.015	FVIC 10	1 dado/nut	
516+	9.1165.001	S 10	1 anello/circlip	
517+	2760.1301.082	D 10	1 anello/ring	
518	9.9732.074	S C 10	4 vite/screw M 8 X 1,25 X 20	
519	276.4601.046	S 10	1 guarnizione/joint	
520+	9.1202.037	D 10	1 anello OR/rubber oil seal	
521+	276.8060.022	F C	1 semigiunto/half-coupling	
522+	2760.4240.028	F C	1 giunto/coupling	
523+	276.1300.070	S	1 anello/ring	
524+	822.1300.102	D 10	1 anello/ring	
525			
526+	822.6130.055	S C	1 perno/gear pin	
527	9.7565.011	F C 10	2 rondella/washer	
528	9.3240.033	FV 10	2 dado/nut	
529+	9.4670.058	FV C 10	1 guarnizione/copper joint	
530+	9.1901.048	FVIC 10	1 bullone raccordo/connection bolt	
531+	9.4670.058	FV C 10	1 guarnizione/copper joint	
532	822.5885.047	S C	1 mozzo/hub	
533	822.6975.114	DV C	1 puleggia/fan driving pulley	Diam.=194
534+	9.1210.087	FV C 10	1 anello tenuta/seal ring	
535+534=			COOPERCHIO SCATOLA INGRANAGGI	
=822.2490.142	S C	1	GEAR TIMING HOUSING COVER	
536	672.3740.056	S C	1 filtro olio/oil filter	std. 5LD675-2
"	822.3740.053	D	"	5LD825-2 - 825-2/L
537	276.5111.008	DV C 10	1 lamierino/tabwasher	
538	9.1200.034	FV C 10	1 anello OR/rubber oil seal	
539	276.1930.034	D C 10	1 bullone/bolt	
540+	276.4600.093	SV C 10	1 guarnizione/joint	
541+	276.5600.022	SV C 10	1 molla/spring	
542+	276.1580.046	D BC 10	1 boccia/bushing	
"	276.1580.119	S AC 10	1	
543	276.6645.118	D C	1 portina fondo/oil pan	5LD675-2 std.
"	832.6646.031	D C	1	5LD825-2 - 825-2/L
544+	9.7625.070	D C 10	1 rondella/washer	
545+	9.6000.021	F C 10	1 pastiglia/nut	
546+	9.9790.023	F C 10	1 vite/screw M 5 X 0,8 X 7	
547+	9.3240.019	FV C 10	1 dado/nut	
548+	276.4680.036	DV C 50	1 guarnizione/joint	
549+440+441+490+491+			SCATOLA REGOLATORE COMPLETA	
492+493+494+496+497+			GOVERNOR HOUSING ASS.Y	
498+501+502+503+504+				
505+506+507+508+550+				
551+552+553+555+556+				
600+601+602+603+604+				
605+606+607+608+609+				
614+641+642=				
=822.7865.085	F C	1		
550+	9.1760.007	S 10	2 bullone/bolt M 6 X 1 X 25	
551+	276.6141.021	D	1 perno/pin	
552+	276.5680.040	S C 10	1 molla/spring	
553+	9.1770.001	FV 10	1 bullone/bolt M 8 X 1,25 X 12	
554			
555+	9.8430.005	D C 10	1 spina/locating pin	
556+	276.5270.082	S C	1 leva/lever	
557+	9.7565.004	F C 10	4 rondella/washer	

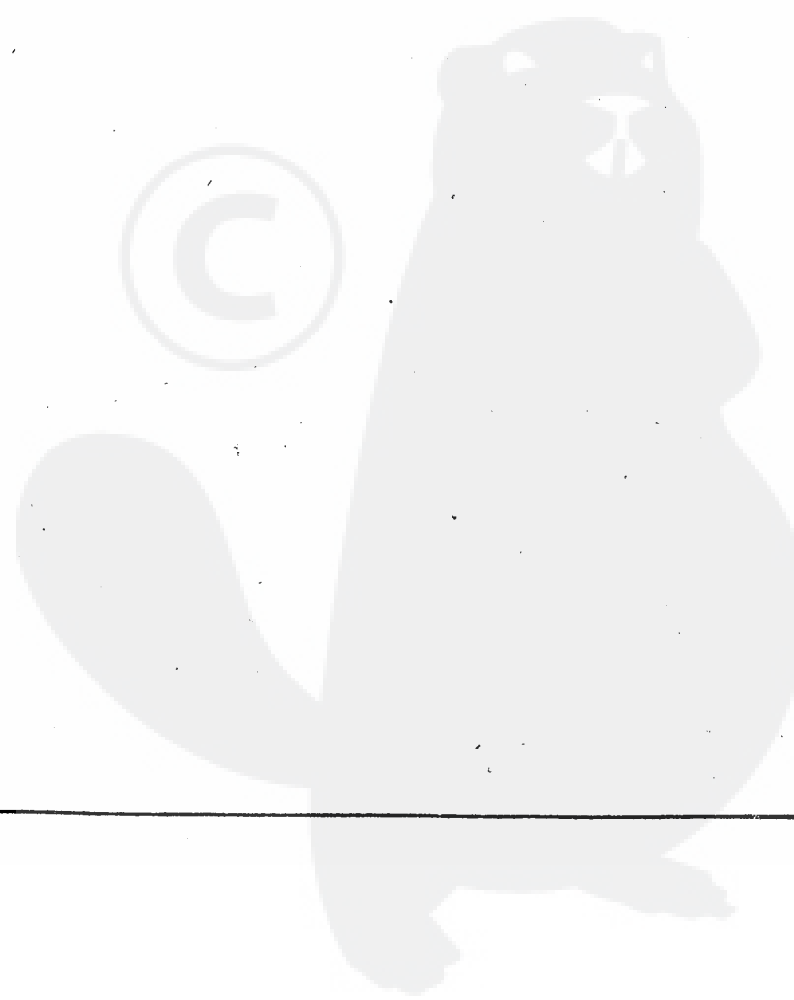
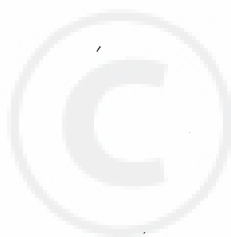
FIG. NO.	MATRICOLA P.NO		Q.TA Q.TY	NOTE REMARKS	GR.5-2 CYL. PAG.15
558+	9.1760.010 N		10 4	bullone/bolt M 6 X 1 X 30	
559+	276.5201.005 D	C	1	leva/lever	
560+	9.8430.023 S	C	10 1	spina/locating pin	
561+510=				LEVA STOP COMPLETA	
	=276.5200.244 D	IC	1	CONTROL STOP LEVER	
562+	9.1202.036 D		10 1	anello OR/rubber oil seal	
563+	9.1202.017 FV	C	10 1	anello OR/rubber oil seal	
564+460+517+520+521+				KIT PREDISPOSIZ.POMPA OLEODINAMICA	
522+523+524+526+529+				HYDRAULIC PUMP ADAPTER	
530+531+562+563+565+					
566+567+620+640=					
	=8220.8888.377 S		* 1	2 PD 3° PRESA MOTO - P.T.O.	
564+	276.3780.036 S		1	flangia/flange	
565+	9.1240.016 D		10 1	anello seeger/snap ring	
566+640=				INGRANAGGIO PREDISPOSIZIONE	
	=822.4936.059 S	C	1	HIDRAULIC PUMP GEARWHEEL	
567+	9.8430.061 D		10 1	spina/locking needle	
568	9.6800.005 D	C	10 2	prigioniero/stud M 10 X 26 (35)	
569	9.9730.026 F		10 4	vite/screw M 8 X 1,25 X 20	
570	822.6685.057 S	C	1	portina/pan	
571+	276.4601.046 S		10 1	guarnizione/joint	
572	9.3260.057 SV	C	10 1	dado/nut	
573	276.7530.020 S	C	10 1	rondella/washer	
574	9.9731.092 S		10 4	vite/screw M 10 X 1,5 X 120	
575	9.8430.038 D	C	10 4	spina/locking needle	
576	9.9730.009 S	C	10 3	vite/screw M 6 X 1 X 12	
577	9.7555.004 FV	C	10 3	rondella/washer	
578	276.2615.018 S	C	1	coperchio/cover	
579+	276.4431.013 D		10 1	guarnizione/joint	
580	9.9732.092 F	C	10 12	vite/screw M 8 X 1,25 X 18	
581+	276.8460.055 D	C	10 2	spina/taper pin	
582+	276.4431.006 SV	C	10 1	guarnizione/joint	
583+125+581=				SCATOLA DISTRIBUZIONE	
	=822.7885.022 D	C	1	GEAR TIMING HOUSING	
584	9.1770.006 S		10 9	bullone/bolt M 8 X 1,25 X 25	
585	9.1770.010 N		10 2	bullone/bolt M 8 X 1,25 X 35	
586	9.7555.007 DV	C	10 11	rondella/washer	
587+	276.4680.037 N		50 1	guarnizione/joint	
588	9.7625.010 FV	C	10 10	rondella/washer	
589	9.1770.002 FV		10 2	bullone/bolt M 8 X 1,25 X 16	
590	9.4670.016 FV	C	10 1	guarnizione/copper joint	
591	9.8965.005 FV	C	10 1	tappo/oil drain plug	
592	9.1770.004 F	C	10 8	bullone/bolt M 8 X 1,25 X 20	
593+	276.5202.046 D	BC	1	leva/lever	
	276.5200.287 S	AC	1	" "	
594+	90.6000.031 FV	C	10 1	pastiglia/nut	
595+	9.9790.023 F	C	10 1	vite/screw M 5 X 0,8 X 7	
596+541+542+544+545+				COMANDO A DISTANZA	
546+547+557+550+593+				REMOTE CONTROL	
594+595+597+598+599=					
	=276.2515.071 F	C	1		
596+	2760.2690.076 D	C	1	coperchio/cover	

FIG. NO.	MATRICOLA P.NO	Q.TA Q.TY	NOTE REMARKS	GR.5-2 CYL. PAG.16
597+	9.3240.009	FV C 10	1 dado/nut	
598+	70.9180.011	S C 10	1 terminale/cable-end	
599+	2760.9180.042	S C 10	1 terminale/cable-end	
600+	9.1200.081	D 10	1 anello OR/rubber oil seal	
601+	9.3000.004	S C	1 cuscinetto/ball bearing	
602+	9.4445.003	SV C 10	1 guarnizione/joint	
603+600+601+602+604+			SUPPORTO LEVA	
614=			LEVER SUPPORT	
	=822.8615.083	S	1	
604+	9.3000.004	S C	1 cuscinetto/ball bearing	
605+	9.6760.004	D 10	2 prigioniero/stud M 6 X 14 (23)	
606+	9.7625.059	D C 10	2 rondella/washer	
607+	822.5200.172	S C	1 leva/lever	
608+	9.3240.008	FV 10	2 dado/nut	
609+	9.8420.002	S C 10	1 spina/locating pin	
610+	276.2135.056	N 10	1 cappellotto/cap	
611+	9.7625.026	S 10	1 rondella/washer	
612+	9.1790.051	D C 10	1 bullone/bolt M 12 X 1,75 X 95	
613+	822.5957.011	DV C 10	1 nottolino/lockpin	
614+	822.3512.011	D C 10	1 distanziale/spacer	
615+	2760.6095.011	D C	1 perno/pin	
616+	6720.6300.020	D C	2 piastrina/plate	
617+	9.7565.013	S C 10	1 rondella/washer	
618+	277.8980.025	FV C 10	2 tappo/plug	
619+	6720.4570.008	DV C 50	2 guarnizione/joint	
620+	9.1201.083	D 10	1 anello OR/rubber oil seal	
621	276.1970.084	N 10	2 bussola/sleeve	
622	9.7555.007	DV C 10	2 rondella/washer	
623	9.9765.009	D C 10	1 vite/screw M 8 X 1,25 X 10	
625	672.7625.100	S AC 10	8 rondella/washer	
626	672.5801.135	SVAC 10	4 molla/spring	
627+	3600.6491.013	FVAC	1 pipetta/pipe elbow	
628	9040.2900.069	F C	1 cruscotto/dashboard	
629	9040.2900.070	F C	1 cruscotto/dashboard	
630	3600.2900.071	D C	1 cruscotto/dashboard	
631	3600.2900.072	S C	1 cruscotto/dashboard	
632	2760.2750.111	F C	1 coperchio/switch cover	
633	2760.5450.009	FV C	1 manometro olio/pressure gauge	
634	9040.7195.056	SV C	1 pulsante/push-button	
635	9.1901.055	FVIC 10	1 bullone raccordo/connection bolt	
636	2920.9475.034	S C	1 tubo manometro/pressure pipe - mm 2000	
	2760.9475.035	N	1 " " " " " " " " " " " "	- mm 4000
637+245+246+299+359+			FILTRO ARIA CON PREFILTRO A CICLONE	
638=			AIRCLEANER CYCLONIC type	
	=822.3703.056	DV C	1	
638+	276.6727.015	FV C	1 prefiltro/cyclonic prefilter	
639	9.7625.061	D C 10	2 rondella/washer	
640+	276.1685.023	DV C	2 bronzina/bearing	
641+	9.3240.008	FV 10	1 dado/nut	
642+	9.9765.122	N 10	1 vite/screw M 6 X 1 X 30	

FIG. NO.	MATRICOLA P.NO	Q.TA Q.TY	NOTE REMARKS	GR.5-2 CYL. PAG.17
643	7200.4906.008 FV C	1	indicatore livello/fuel level gauge	
644	9.9761.001 D C 10	6	vite/screw M 4 X 0,7 X 12	
	15+30+109+143+149+ 185+193+194+254+306+ 351+363+383+450+474+ 540+548+571+579+582+ 587+619=		SERIE GUARNIZIONI GASKET SET	
	=672.8180.066 FV CR	1	x 5LD675-2	
	=822.8180.068 FV CR	1	x 5LD825-2 - 825-2/L	
DISVI/RICA				

* 21.11.1986 *				

DESCRIZIONI NON IMPEGNATIVE				
SUBJECT TO MODIFICATIONS				
				aggiornata al 21.11.1986



MATERIALE DI RETTIFICA
GRINDING WORKSHOP PARTS LIST
MATERIEL POUR RECTIFIEUR

GR.5/2 CYL.
PAG.18

MOTORI-ENGINES-MOTEURS GR. 5/2 Cyl.

FIG. NO.	MATRICOLA PART NO.	Q.TA Q.TY	NOTE REMARKS
55+	276.4845.057 FV CR10	2	guida v.scar./exhaust v.guide std.
"	276.4845.041 FV CR10	2	" " " +0,50
57+	276.4845.056 FV CR10	2	guida v.aspir./inlet v.guide std.
"	276.4845.040 FV CR10	2	" " " +0,50
141+	672.8000.075 FV CR10	2	sede v.sc./exh.v.seat 5LD675-2
"	822.8000.073 FV CR10	2	" " " 5LD825-2 - 825-2/L
142+	672.8000.074 FV CR10	2	sede v.asp./inl.v.seat 5LD675-2
"	822.8000.072 FV CR10	2	" " " 5LD825-2 - 825-2/L
179+	276.9685.019 FV CR10	2	valv.scar./exh. valve 5LD675-2
"	822.9685.053 FV CR10	2	" " " 5LD825-2 - 825-2/L
180+	276.9652.015 FV CR10	2	valv.asp./inlet valve 5LD675-2
"	822.9652.041 FV CR10	2	" " " 5LD825-2 - 825-2/L
239+	276.8210.053 F CR10	2	+0,50 x 5LD675-2 serie segm./ring set
"	276.8210.054 F CR10	2	+1,00 " " "
"	832.8210.068 F CR10	2	+0,50 x 5LD825-2 - 825-2/L " "
"	832.8210.069 F CR10	2	+1,00 " " "
291+239+240+241=			PISTONE COMPLETO/PISTON SET
=672.6500.156 F CR		2	+0,50 x 5LD675-2
=672.6500.157 F CR		2	+1,00 " " "
=822.6500.155 F CR		2	+0,50 x 5LD825-2 - 825-2/L
=822.6500.158 F CR		2	+1,00 " " "
294+	270.1630.006 FV CR10	2	bronzina/small end bearing 5LD675-2
"	832.1630.011 FV CR	2	" " " 5LD825-2 - 825-2/L
349	291.1640.048 F CR	2	bronz.biella/large end bushing -0,25
"	291.1640.047 F CR	2	" " " -0,50
362	822.1611.062 F CR	1	bronz.l.volano/flywheel side bear. -0,25
"	822.1611.063 F CR	1	" " " -0,50
"	822.1611.064 F CR	1	barenabile/bearing reamed
377+	276.1600.056 F ICR	1	bronz.alb.camme/camshaft bearing -0,25
"	276.1600.057 F ICR	1	" " " -0,50
"	276.1600.058 S ICR	1	" " " -1,00
"	276.1600.059 S ICR	1	+1,00 su diam.esterno/on ext.diameter
438+	822.1611.070 F CR	1	bronz.l.distrib./gear side bearing -0,25
"	822.1611.071 F CR	1	" " " -0,50
"	822.1611.072 F CR	1	barenabile/bearing reamed
442	822.1611.073 F CR	1	bronz.supp.cent./middle supp.bear.-0,25
"	822.1611.074 F CR	1	" " " -0,50
"	822.1611.075 F CR	1	barenabile/bearing reamed
15+30+109+143+149+ 185+193+194+254+306+ 351+363+383+450+474+ 540+548+571+579+582+ 587+619=			SERIE GUARNIZIONI GASKET SET
=672.8180.066 FV CR		1	x 5LD675-2
=822.8180.068 FV CR		1	x 5LD825-2 - 825-2/L