

ORIGINAL  
PIECES  
SPARE PARTS  
REQUERIDOS

6LD260

6LD325

6LD360

6LD260/C

6LD325/C

6LD360/C

*Cilindro integrale*

*no. 2733504*

LC  
FAB  
REC  
MA

LOM  
FABRI  
REGG  
MAI

SER  
POC  
GAS  
DICH  
SERIE  
SERIE  
RICAM  
PIECE  
MAIN  
WAR  
REPL

SERI  
POCI  
GASI  
DICH  
SERIE  
SERIE  
RICAM  
PIECE  
MAIN  
WAR  
REPL

**SERVICE**

**LOMBARDINI**  
FABBRICA ITALIANA MOTORI S.p.A.  
REGGIO EMILIA, ITALIA  
**MADE IN ITALY**

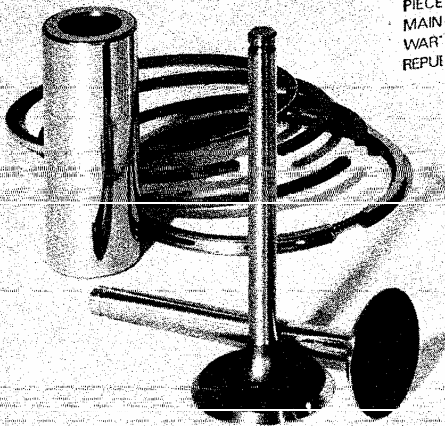
SERIE GUARNIZIONI  
POCHETTE JOINTS  
GASKET SET  
DICHTUNGSSATZ  
SERIE JUNIAS

RICAMBI PRIMO IMPIEGO  
PIECES POUR L'ENTRETIEN  
MAINTENANCE SPARE PARTS  
WARTUNG - ERSATZTEILE  
REPUESTOS DE PRONTO EMPLEO

REPUESTOS ORIGINALES  
ORIGINAL ERSATZTEILE  
GENUINE SPARE PARTS  
PIECES D'ORIGINE  
RICAMBI ORIGINALI

 **LOMBARDINI MOTORI**

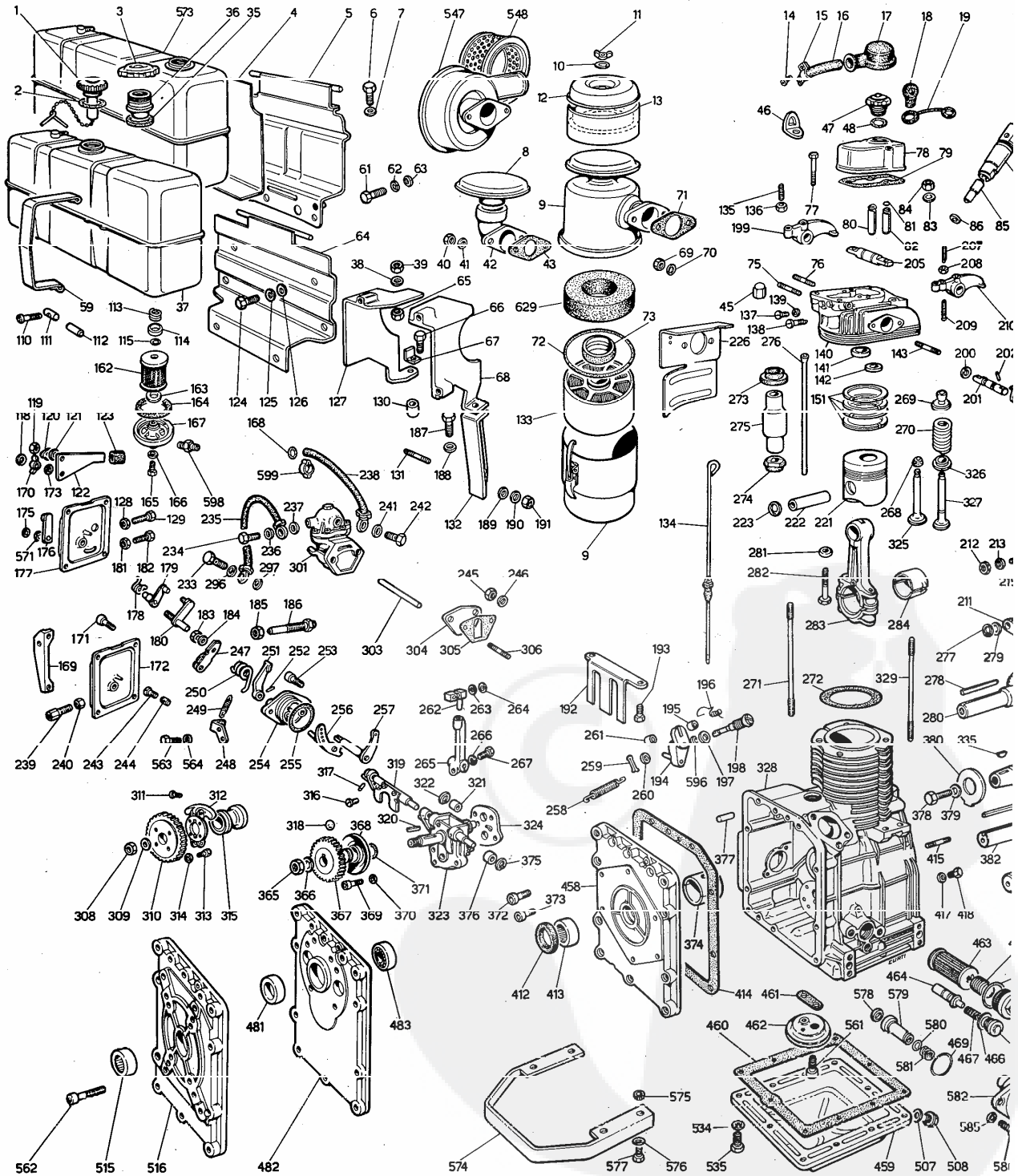
 **LOMBARDINI MOTORI**



RICAMBI PER MOTORE STANDARD.  
PER APPLICAZIONI SPECIALI CONSULTARE  
IL CATALOGO PRESSO I CENTRI ASSISTENZA  
E RICAMBI.

PIECES POUR DES MOTEURS STANDARD.  
POUR LES ADAPTATIONS CONSULTER  
LE CATALOGUE AUPRES  
DES AGENTS SERVICE.

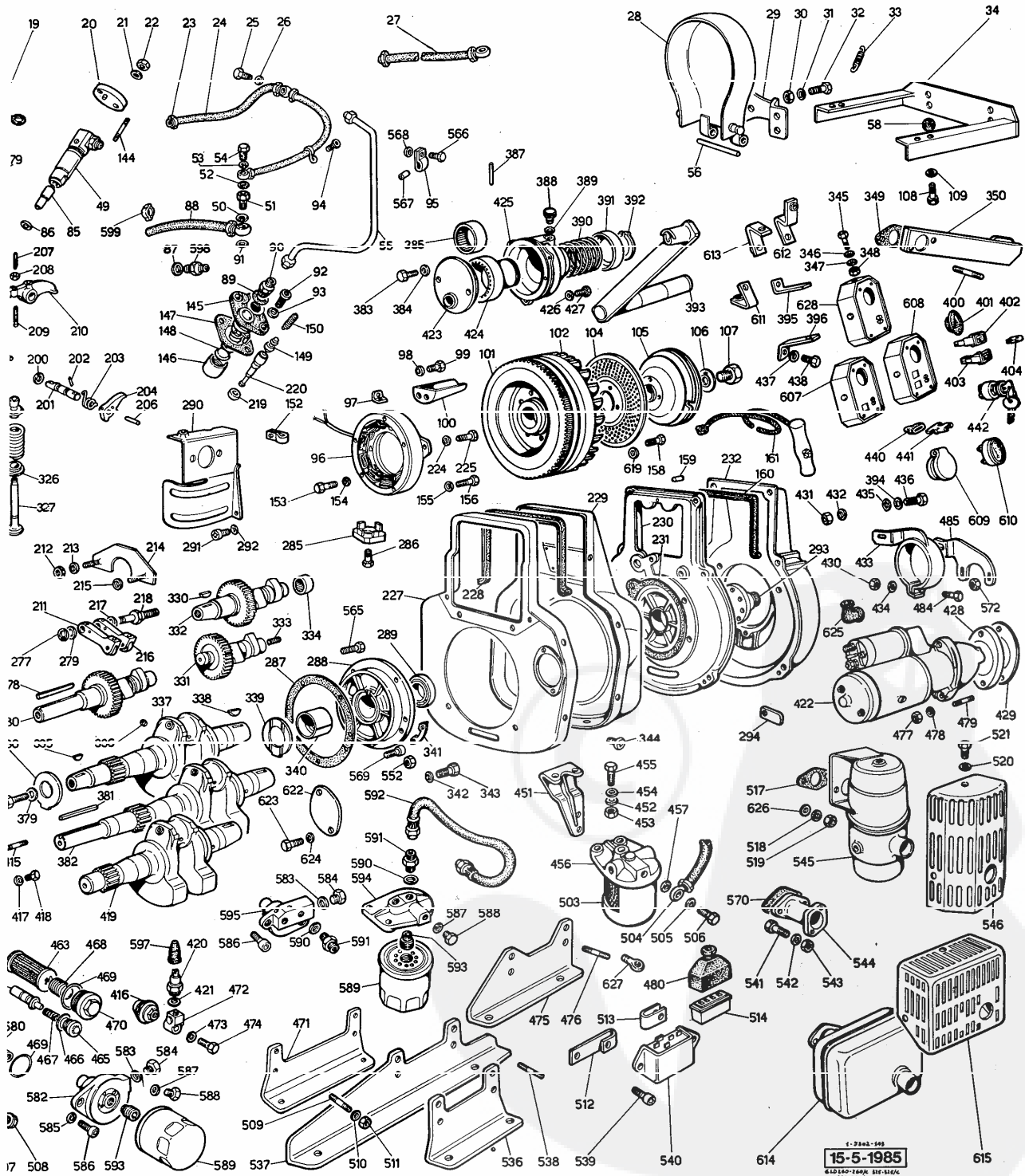
SPARE PARTS FOR STAND  
FOR SPECIAL APPLICATION  
CATALOG AT SERVICE CENT



R STANDARD ENGINE.  
APPLICATIONS SEE MASTER  
VICE CENTERS.

ERSATZTEILE FÜR STANDARD-MOTOREN.  
FÜR SONDERANFERTIGUNGEN SIEHE  
ERSATZTEILKATALOG BEI SERVICE  
WERKSTÄTTEN.

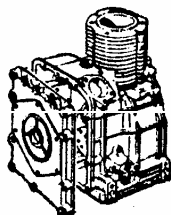
REPUESTOS PARA MOTORES STANDARD.  
PARA APLICACIONES VEASE CATALOGO  
EN LAS ESTACIONES SERVICE.



15-5-1985  
612-140-1400 610-1100  
140-1400/C

**6**

500	6 LD 260
520	6 LD 325
530	6 LD 360
532	6 LD 360/V
-	6 LD 400
503	6 LD 260/C
523	6 LD 325/C
533	6 LD 360/C




---

LEGENDA .....	TAVOLA RICAMBI	MATR.
	SPARE PARTS TABLE	P.N.O. ... 1.5302.143
	TABLEAU PIECES DETACHEES	REF.

---

\*\*\*\*\*  
 15.05.1985  
 \*\*\*\*\*

MOTORI TIPO	6LD 260	6LD 260/C	CON CILINDRO INTEGRALE
ENGINES TYPE	6LD 325	6LD 325/C	WITHOUT DETACHEABLE CYL.
MOTEURS TYPE	6LD 360	6LD 360/C	AVEC CYLINDRE INTEGRAL

VEDI/SEE/VOIR

LIBRETTO USO E MANUTENZIONE	
USE-MAINTENANCE BOOKLET	..... 1.5302.077
LIVRET EMPLOI-ENTRETIEN	
LIBRETTO SERVICE	
SERVICE DIRECTORY	..... 1.7968.002
RESEAU S.A.V.	
SERIE ACCESSORI	
ACCESSORY SET	..... 283.8140.080
JEU ACCESSOIRES	

---

NOTE/REMARKS/REMARQUES

F - ALTA MOVIMENTAZIONE/FAST MOVING PART/Haute Mouvement.  
 S - MEDIA MOVIMENTAZIONE/MEDIUM MOVING PART/MOYEN MOUVEMENT.  
 D - BASSA MOVIMENTAZIONE/SLOW MOVING PART/BAS MOUVEMENT.  
 E - AD ESAURIMENTO/EXHAUSTING PART/PIECE EN EPUISEMENT.  
 N - PARTICOLARE NUOVO O FORNITO SU RICHIESTA/  
 -NEW PART OR PART SUPPLIED UPON REQUEST/  
 -PIECE NOUVELLE OU FOURNIE SUR DEMANDE.  
 A - VALIDO DAL MOTORE.../FROM ENG.S.NO.../A PARTIR DU MOTEUR...  
 (VEDI CIRCOLARE TECNICA/SEE SERVICE LETTER/VOIR CIRC.TECHN.)  
 B - VALIDO FINO AL MOTORE.../UP TO ENG.S.NO.../JUSQU'AU MOTEUR...  
 (VEDI CIRCOLARE TECNICA/SEE SERVICE LETTER/VOIR CIRC.TECHN.)  
 I - INTERCambiabile/INTERCHANGEABLE.  
 (VEDI CIRCOLARE TECNICA/SEE SERVICE LETTER/VOIR CIRC.TECHN.)  
 V - STOCK VITALE PER OFFICINE SERVICE.  
 VITAL STOCK FOR SERVICE DEALER.  
 STOCK VITAL POUR STATIONS SERVICE.  
 C - STOCK VITALE PER COSTRUTTORI, ESPORTATORI, ENTI DI STATO.  
 VITAL STOCK FOR PRODUCERS, EXPORTERS, STATE COMPANIES.  
 STOCK VITAL POUR CONSTRUCTEURS, EXPORT., INSTITUT. DE L'ETAT.  
 R - STOCK VITALE PER RETTIFICA.  
 VITAL STOCK FOR GRINDING WORKSHOPS.  
 STOCK VITAL POUR USINES DE RECTIFICATION.  
 10/50/2-Q.TA MINIMA FORNIBILE/MIN. SUPPLIED Q.TY/Q.TE MIN. FOURNIE.  
 = GRUPPO COMPLETO/ASSEMBLY/GROUPE COMPLETE.  
 + COMPONENTE DEL GRUPPO/ASSEMBLY COMPONENT/COMPONENT DU GROUPE.

---

SERIE GUARNIZIONI	500.8180.039	6LD260-260/C
GASKET SET	520.8180.047	6LD325-325/C
	530.8180.055	6LD360-360/C

BLOCCO MOTORE SHORT BLDCK		TIPO MOTORE ENGINE TYPE		BL. MOTORE CON TESTA SH. BLOCK WITH CYL.H	
5000.1560.019	6LD260	CONIC.	5000.1560.113		
5000.1560.035	6LD260	EXT.4 SAE	5000.1560.120		
5000.1560.037	6LD260	EXT.A 3	5000.1560.123		
5030.1560.025	6LD260/C	CONIC.	5030.1560.114		
5200.1560.022	6LD325	CONIC.	5200.1560.114		
5200.1560.036	6LD325	EXT.4 SAE	5200.1560.121		
5200.1560.038	6LD325	EXT.A 3	5200.1560.124		
5230.1560.026	6LD325/C	CONIC.	5230.1560.117		
5300.1560.047	6LD360	CONIC.	5300.1560.115		
5300.1560.046	6LD360	EXT.4 SAE	5300.1560.122		
5300.1560.048	6LD360	EXT.A 3	5300.1560.125		
5300.1560.062	6LD360	EXT.2 SAE	5300.1560.127		
5330.1560.044	6LD360/C	CONIC.	5330.1560.118		
5330.1560.043	6LD360/C	EXT.4 SAE	5330.1560.126		
FIG. NO.	MATRICOLA P.NO	Q.TA Q.TY	NOTE REMARKS	GR. 6 - 1.5302.143	PAG. 2
1+2=	=2830.9043.025 FV C	1	TAPPO SERBATOIO/FUEL TANK CAP STD.		
2+	2700.4650.056 N	10 1			
3+	5030.9043.045 S	1	TAPPO SERBATOIO/TANK CAP SPECIAL		
..	500.9043.034 N	1	X SERB.CON TAPPO RIF.LAT.(9996.779) RIGHT SIDE FILLING CAP F.TANK		
4	500.4701.010 F C	10 1			
5	500.8866.053 F C	1	X SERB.L.DISTR./GEAR SIDE FUEL TANK		
6	9.1770.004 F C	10 2	M 8 X 1,25 X 20		
7	9.7565.007 FV C	10 2			
8	292.2135.094 D	1			
9+72+73+133+629=	=500.3700.105 F IC	1	CON CAPPELLOTTO/AIRCLEAN.WITH COVER STD.		
	=500.3700.106 D IC	1	X MOTORI CON POMPA ALIMENTAZIONE ENGINES WITH FUEL FEED.PUMP		
9+10+11+12+13+72+	73+133+629=		FILTRO ARIA CON PREFILTRO A CICLONE CYCLONIC TYPE AIRCLEANER		
	=500.3700.107 F IC	1	STD.		
	=500.3700.108 S I	1	X MOTORI CON POMPA ALIMENTAZIONE ENGINES WITH FUEL FEED.PUMP		
10+	9.7555.004 S C	10 1			
11+	9.3200.002 S	10 1			
12+	500.2125.055 SV C	1			
13+	500.1301.053 FV C	10 1	PREFILTRO/PREFILTER		
14	9.9730.023 N	1			
15+	2760.3617.020 S	10 1			
16+	2830.9600.064 S	1	MM 700		
..	5000.9601.044 FV C	10 1	MM 500		
17+	2830.2145.003 F C	1			
18	270.9055.003 FV C	10 1			
19	500.3695.038 SV	10 1			
20	500.3790.042 S I	1			
21	9.7565.004 FV C	10 2			
22	9.3240.008 F C	10 2			
23	.....				
24	500.9601.064 FV C	10 1	STD. (MM 530)		
..	5000.9601.065 N	1	X FILTRO COMB.SUL MOTORE (MM 1290) FUEL FILTER ON ENGINE		
25	9.1900.002 FV C	10 1			
26	9.4670.003 FV C	10 2			
27	5000.9375.078 D	1	X SERB.L.VOLANO/FLYWH.SIDE F.TANK		

FIG. NO.	MATRICOLA P.NO	Q.TA Q.TY	NOTE REMARKS	GR. 6 - 1.5302.143 PAG. 3
28+29+56= =5000.6927.036 S		1		
29+	.....		VEDI/SEE FIG. 28+...	
30	9.3240.008 F BC	10 4		
31	9.7565.004 FVBC	10 4		
32	9.7565.007 FVAC	10 2		
32	9.1760.032 S B	10 4	M 6 X 1 X 14	
33	9.1770.053 N	10 2	M 8 X 1,25 X 16	
33	5000.5725.034 S	10 2		
34	5000.8903.051 D	1 1	X 6LD260-325	
34	5300.8903.052 S C	1 1	X 6LD360	
35	2700.4650.056 N	10 1		
36	5000.6902.018 D	1 1		
37+1+2= =500.8103.038 F C		1	SERBATOIO COMPLETO/FUEL TANK STD.	
38	9.7565.007 FV C	10 2		
39	9.3240.020 F C	10 2		
40	9.3240.021 S	10 2		
41	9.7565.007 FV C	10 2		
42	5200.2942.019 D I	1 1		
43+	500.4500.092 F	10 1		
45	9.3230.026 S	10 2	LATO DISTRIBUZIONE/GEAR SIDE	
46+	904.8506.003 S AC	10 1		
47+48= =270.9050.021 FV C		1	TAPPO SFIATO/BREATHER CAP STD.	
47+15+16+17+48= =2830.9050.029 FV C		1	TAPPO SFIATO/BREATHER CAP PROTETTO/PROTECTED	
48+	9.1200.014 FVIC	10 1		
49+85= =500.6615.032 FV C		1	PORTAPOLVERIZZATORE/NOZZLE HOLDER STD.	
50	9.4670.015 FV C	10 1		
51	710.1901.012 FVIC	10 1		
52	9.4670.003 FV C	10 1		
53	9.4670.003 FV C	10 1		
54	9.1900.002 FV C	10 1		
55	500.9372.090 FV C	1 1		
56+	.....		VEDI/SEE FIG. 28+...	
58	720.3527.004 F	10 4		
59+110+111= =500.3617.010 F C		10 2	FASCETTA FISSAGGIO SERBATOIO FUEL TANK FIXING CLAMP	
61	9.1770.004 F C	10 2	M 8 X 1,25 X 20	
62	9.7565.007 FV C	10 2		
63	9.7625.012 FV C	10 2		
64	5000.8866.058 S	1 1	X SERB.L.VOLANO/FLYWH.SIDE F.TANK	
65	9.3240.018 F C	10 2		
66	9.1770.017 S	10 1	M 8 X 1,25 X 60	
67	500.5111.066 S	10 1		
68	5000.8866.064 S	1 1	X 6LD260-260/C-325-325/C	
68	5000.8866.059 S	1 1	X 6LD360-360/C	
69	9.3240.018 F C	10 2		
70	9.7565.007 FV C	10 2		
71+	500.4500.092 F	10 2		

FIG. NO.	MATRICOLO P.NO	Q.TA Q.TY	NOTE REMARKS	GR. 6	1.5302.143	PAG. 4
72+	500.3526.052	F BC 10 1			H= 18 DIAM.=117	
..	9.1201.049	FVBC 10 1			H=5,5 DIAM.=128	
..	500.4775.120	FVAC 10 1			H= 10 DIAM.=135	
73+	500.1261.072	FVIC 10 1	H=17,6 DIAM.=54			
75+	9.6780.010	FV C 10 1	M 8 X 22 (34)			
76+	9.6780.071	FV C 10 1	M 8 X 28 (40)			
77+	9.9730.034	D 10 2	M 8 X 1,25 X 55			
78+46+77=	=500.2125.084	F IC 1	CAPPELLO SCATOLA BILANCIERI ROCKER ARM COVER			
79+	500.4400.015	F 50 1				
80+	500.4845.071	FVICR10 1	STD. GUIDA V.ASP./INLET V.GUIDE			
..	500.4845.075	D I R10 1	+0,50			
81+	500.1160.008	FV C 10 2				
82+	500.4845.030	FV CR10 1	STD. GUIDA V.SCAR./EXHAUST V.GUIDE			
..	500.4845.052	D R10 1	+0,50			
83	9.7625.061	S C 10 2	LATO VOLANO/FLYWHELL SIDE			
84	9.3240.016	F C 10 2	LATO VOLANO/FLYWHELL SIDE			
85+	520.6531.095	FVIC 1	POLVERIZZATORE/NOZZLE STD.			
86	9.4670.005	FVBC 10 1	0,50 D=16,50			
..	9.4670.006	FVBC 10 2	1,00 D=16,50			
..	9.4670.064	FVAC 10 1	1,00 D=18,85			
..	9.4670.065	FVAC 10 1	1,50 D=18,85			
87	9.4670.003	FV C 10 1				
88	500.9375.204	FVAC 1	DA SERB.L.DISTR.A POMPA IN.(MM 142) FROM GEAR SIDE F.TANK TO INJECT.PUMP			
..	5000.9375.245	D A 1	DA SERB.L.VOL. A POMPA IN.(MM 420) FROM FLYW.SIDE F.TANK TO INJECT.PUMP			
89+	9.1200.031	FV C 10 1				
90+	271.7265.008	D 1				
91	9.4670.015	FV C 10 1				
92	9.9730.100	FV C 10 2	M 8 X 1,25 X 25			
93	9.7625.010	FV C 10 2				
94	9.9790.037	FV C 10 1	M 6 X 1 X 8			
95	2830.3617.016	S 10 1				
96	283.1156.090	FVIC 1	ALTERNATOR 12 V 12 A			
..	5000.1156.098	F C 1	.. 12 V 4 A			
97	500.6275.076	S C 10 1				
98	9.7555.004	S C 10 2				
99	9.9730.012	S 10 2	M 6 X 1 X 20			
100	5000.3350.065	D 1	X AVVIAM.ELETTR./EL.STARTING			
..	500.3350.057	D B 1	X AVV.MAN./HAND-CRANK START. FIND A.../UP TO ENG.S.NO...			
..	540.3350.090	N 1	X AVV.MAN./HAND-CRANK START. DA.../FROM ENG.S.NO...			
101+	530.2816.036	SVAC 1	CORONA AVVIAMENTO/CROWN GEAR			
102+101=	=5000.9885.047	S AC 1	VOLANO+CORONA / FLYWHELL+CROWN GEAR X AV.EL./EL.ST.12V 4A 6LD260-325-360			
	=5000.9885.048	S AC 1	X AV.EL./EL.ST.12V 12A .. .. .			
102	500.9881.055	S 1	X 6LD260-325 STD.			
..	5000.9882.027	N 1	X 6LD260-325 IMP.LUCE/LIGHT.SYSTEM			
..	503.9882.002	D 1	X 6LD260/C-325/C STD.			
..	5300.9884.005	S C 1	X 6LD360-360/V STD.& IMP.LUCE/LIGHT			
..	533.9884.007	N 1	X 6LD360/C STD.			
..	533.9884.008	N 1	X 6LD 360/C IMP.LUCE/LIGHT.SYSTEM			
..	5000.9885.021	N B 1	X AVV.MANOV.CON/SENZA IMP.LUCE HAND-CRANK START.WITH/WITHOUT			
..	540.9880.129	N A 1	LIGH.SYST.SU/ON 6LD260-325-360			
..	5030.9884.083	N B 1	X AVV.MANOV.CON/SENZA IMP.LUCE			
..	543.9880.130	N A 1	HAND-CR.START.WITH/WITHOUT LIGHT. SYSTEM SU/ON 6LD260/C-325/C-360/C			

FIS. NO.	MATRICOLO P.NO	DATA Q.TY	NOTE	REMARKS	CR. 4 - 1 5302 143	PAG. 5
104	500.5096.009	S B	1	X AVV.MAN./HAND-CRANK STARTING		
105	500.5095.076	FVAC	1			
105	500.6960.069	FV C	1	X 6LD260-325-360	STD.	
	503.6960.083	S C	1	X 6LD260/C-325/C-360/C	STD.	
106	9.7626.043	F IC	10	1		
107	9.1800.030	F IC	10	1	X 6LD260-325-360-360/V	
	9.1800.029	S	1	1	X 6LD260/C-325/C-360/C	
108	9.9730.027	FV C	10	4	M 8 X 1,25 X 25	
109	9.7565.007	FV C	10	4		
110+	9.9730.016	FV C	10	2	M 6 X 1 X 35	
111+	45.1557.019	FV C	10	2		
112	271.9600.057	FV C	10	2		
113+	273.5575.006	FV C	10	1		
114+	273.3930.019	F C	10	1		
115+	9.1200.032	FV C	10	1		
118+	9.1165.001	S	10	1		
119+	9.3240.004	F C	10	1		
120+	90.6330.057	D	10	1		
121+	9.7625.019	S C	10	1		
122+	500.5201.094	S	10	1		
123+	270.6550.010	S	10	1		
124	9.1770.009	S	10	4	X 6LD260-325-360	M 8 X 35
	9.1770.031	N	10	4	X 6LD260/C-325/C-360/C	M 8 X 50
125	9.7565.007	FV C	10	4		
126	9.7625.061	S C	10	4		
127	5000.8866.063	S	10	1	X 6LD260-260/C-325-325/C	
	5000.8866.061	S	10	1	X 6LD360-360/C	
128	9.3240.006	F C	10	1		
129	9.1760.029	N	10	1	M 6 X 1 X 30	
130	5300.3521.034	S I	10	1		
131	9.6780.012	FV C	10	2	M 8 X 25 (37)	
132	5000.8546.027	S	10	1		
133+	500.5496.057	FVBC	10	1	MASSA/FILTER.ELEMENT	H=87 DIAM.=120
	500.5496.071	FVAC	10	1		H=90 DIAM.=119
134	500.1400.035	FV C	10	1	STD. MM 385	
	5000.1400.072	S C	10	1	SPECIAL MM 190	
135+	500.9850.048	FV C	10	1		
136+	9.3240.008	F C	10	1		
137+	9.1760.001	F C	10	1	M 6 X 1 X 10	
138+	9.4670.001	FV C	10	1		
139+	715.9820.080	S	10	1		
140+75+76+80+81+82+					TESTA COMPLETA PREDISPOSTA	
137+138+139+141+142+					PER DECOMPRESSIONE	
143+144+200+201+202+					CYLINDER HEAD PRESET FOR	
203+204+206+268+269+					DECOMPRESSION	
270+325+326+327=						
	=502.9201.061	SV C	10	1	X 6LD260-260/C	
	=522.9201.062	SV C	10	1	X 6LD325-325/C-360-360/C	
141+	500.8000.039	S CR10	10	1	ASP./INLET SOLO/ONLY X 6LD260-260/C	
	520.8000.053	FVBCR10	10	1	SEDE V.ASPIRAZ./INLET V.SEAT	
	283.8000.036	FVACR10	10	1		
142+	500.8000.038	S CR10	10	1	SC./EXHAUST SOLO/ONLY X 6LD260-260/C	
	520.8000.054	FVBCR10	10	1	SEDE V.SCARICO/EXHAUST V.SEAT	
	283.8000.037	FVACR10	10	1		
143+	9.6780.068	S	10	2	M 8 X 18 (30) STD.	
	9.6780.010	FV C	10	2	M 8 X 22 (34) SPECIAL K 9997.717	
	9.6780.069	FV C	10	2	X MARM.A BAULETTO/BOX FORM MUFFLER	
144+	9.6760.035	FV C	10	2	M 6 X 53 (65)	



NO.	P.NO	Q.TY	REMARKS	PAG. 6
145+89+90=			POMPA INIEZIONE/INJECTION PUMP	
	=500.6590.019	FV C 1	X 6LD260-260/C-325-325/C STD.	
	=500.6590.044	SV C 1	X " " " " BOSCH TYPE	
	=530.6590.069	FVIC 1	X 6LD360-360/C " " STD.	
146	500.7215.035	FV C 1		
147+	500.4580.023	N 50	1 0,30	
"	500.4580.024	N 50	1 0,50	
"	500.4580.029	N 50	1 1,00	
"	500.4580.057	N 50	1 0,05	
148	500.6000.036	FV C 10	1	
149	500.9472.012	F C 1	BOSCH TYPE	
150	271.5755.034	S 10	1	
151+	500.8210.064	FV C 10	1 STD. X 6LD260-260/C	
"	500.8210.065	FV CR10	1 +0,50 " "	
"	500.8210.066	S CR10	1 +1,00 " "	
"	520.8210.080	FV C 10	1 STD. X 6LD325-325/C	
"	520.8210.081	FV CR10	1 +0,50 " "	
"	520.8210.082	F CR10	1 +1,00 " "	
"	530.8210.083	FV C 10	1 STD. X 6LD360-360/C	
"	530.8210.087	FV CR10	1 +0,50 " "	
"	530.8210.088	F CR10	1 +1,00 " "	
152	500.3617.021	S 10	1 X 6LD260-260/C-325-325/C	
"	530.3617.046	N 1	X 6LD360-360/C	
153	9.9730.012	S 10	4 X AVV.EL./EL.ST.12V 4A-M 6X1X20	
"	9.1760.001	F C 10	3 X " " 12V 12A-M 6X1X10	
154	9.7555.004	S C 10	4 X " " 12V 4A	
"	9.7565.004	FV C 10	3 X " " 12V 12A	
155	9.7565.004	FV C 10	6 X " " 12V 4A	
156	9.1760.042	S 10	6 X " " 12V 4A	
158	9.1765.053	F IC 10	4 M 7 X 1 X 24 STD.	
"	9.1765.006	N 10	4 M 7 X 1 X 10 (MOTORI SENZA PULEGGIA) (ENGINES WITHOUT PULLEY)	
159	90.8460.083	N 10	1	
160	500.4570.012	D 10	1	
161	283.4055.003	F C 1	1	
162+113+114+115+163+			FILTRO COMBUSTIBILE COMPLETO	
164+165+166+167=			FUEL FILTER ASS.Y	
	=500.3730.028	FV C 1		
162+	500.2175.032	FV C 1	CARTUCCIA COMB./F.FILTER ELEMENT	
163+	273.4490.017	FV C 10	1	
164+	500.4431.040	F 10	1	
165+	9.1760.076	N A 1	1	
166+	9.1202.052	FVAC 10	1	
167+165+166=				
	=500.2605.024	F IC 1		
168	9.4670.003	FV C 10	1	
169+239+240=				
	=500.2516.013	S C 1		
170+	9.3200.015	FVIC 10	1	
171	9.9790.039	FV C 10	4 M 6 X 1 X 12	
172+175+176+178+179+			COMANDO A DISTANZA COMPLETO	
239+240+243+244+571=			REMOTE CONTROL ASS.Y	
	=500.2515.087	S C 1		
173+	9.7626.054	FVAC 10	1	
175+	9.3240.008	F C 10	1	

FIG. NO.	MATRICOLO F.NO	Q.TA Q.TY	NOTE REMARKS	GR. 6 - 1.5302.143	PAG. 7
176+	500.5202.014	F C 10 1			
177+118+119+120+121+			COMANDO A MANO COMPLETO		
122+123+170+173+175+			HAND CONTROL ASS.Y		
176+178+179+180=					
	=500.2691.020	F C 1			
178+	500.5680.044	FV C 10 1			
179+	500.5202.060	S 10 1			
180+	500.6371.033	S C 1			
181	9.3240.008	F C 10 1			
182	9.1760.029	N 10 1	M 6 X 1 X 30		
183+	9.3240.008	F C 10 1			
184+	9.7565.004	FV C 10 1			
185+	9.3240.058	S 10 1			
186+185=			SUPPLEMENTO DI COPPIA		
	=530.8576.007	FV C 1	EXTRA FUEL DEVICE		
187	9.9730.024	FV C 10 1	M 8 X 1,25 X 14		
188	9.7565.007	FV C 10 1			
189	9.7625.061	S C 10 2			
190	9.7565.007	FV C 10 2			
191	9.3240.018	F C 10 2			
192	500.5095.099	S C 10 1			
193	9.9790.037	FV C 10 2	M 6 X 1 X 8		
194	500.5203.019	FV C 1	STD.		
..	500.5203.002	S 1	X GR.ELETTR./GENERATOR SETS		
195	9.1585.028	S 10 1	X		
196	500.5670.008	D 10 1	X GR.ELETTR./GENERATOR SETS		
197	9.4670.003	FV C 10 1			
198	500.6140.164	FVAC 10 1	STD.		
..	500.6141.074	S 1	X GR.ELETTR./GENERATOR SETS		
199+135+136+205+207+			GRUPPO BILANC.COMPLETO		
208+209+210=			ROCKER ARM ASS.Y		
	=502.4330.030	S C 1	STD.		
	=5030.4330.042	N 1	X 6LD260/C-325/C-360/C		
			ROTAZ.D./CLOCKW.ROTAT.		
200+	9.1200.034	FV C 10 1			
201+	500.1110.071	S C 1			
202+	9.8430.009	S 10 1			
203+	500.5680.046	S 10 1			
204+200+201+202+203+			DECOMPRESSIONE COMPLETA		
206=			DECOMPRESSION ASS.Y		
	=502.3348.017	S C 1			
204+	500.5270.078	S 1			
205+	502.6045.033	SVIC 1			
206+	9.8430.023	FV C 10 1			
207+	500.9850.048	FV C 10 1			
208+	9.3240.008	F C 10 2			
209+	500.9850.052	S C 10 1			
210+	.....		VEDI/SEE FIG.NO. 199+...		
211	500.5270.085	FVAC 1	FIND A... & DA...		
..	500.5271.022	E 1	UP TO ENG.S.NO... & FROM ENG.S.NO...		
			DA... & FIND A...		
			FROM ENG.S.NO... & UP TO ENG.S.NO...		
212	9.3240.018	F C 10 2			
213	9.7555.007	FV C 10 2			
214	503.6275.069	D 1	X 6LD260/C-325/C--360/C		
215	9.1200.001	FV C 10 2			

FIG.	MATRICOLO	Q.TA	NOTE	CR. 6 - 1.5302.143
NO.	P.NO	Q.TY	REMARKS	PAG. 8
216	500.5270.084 FVAC	1	FINO A... & DA... UP TO ENG.S.NO... & FROM ENG.S.NO...	
..	500.5271.022 E	1	DA... & FINO A... FROM ENG.S.NO... & UP TO ENG.S.NO...	
217	500.7550.006 S C 10	1		
218	500.6140.080 S C 10	1		
219	500.6400.045 SV C 10	1		
220	500.6578.010 FV C	1	X 6LD260-260/C-325-325/C STD.	
..	500.6578.019 D	1	X " " " " BOSCH TYPE	
..	530.6578.014 FV C	1	X 6LD360-360/C STD.	
..	530.6578.021 S	1	X " " " " BOSCH TYPE	
221+151+222+223=			PISTONE COMPLETO/PISTON ASS.Y	
=500.6501.090 FV C		1	STD. X 6LD260-260/C	
=500.6501.091 FV CR		1	+0,50	
=500.6501.092 S CR		1	+1,00	
=5030.6500.195 D C		1	STD. X 6LD260/C CLOCKWISE ROTATION	
=5030.6500.196 D CR		1	+0,50	
=5030.6500.197 D CR		1	+1,00	
=520.6502.028 FV C		1	STD. X 6LD325-325/C	
=520.6502.029 FV CR		1	+0,50	
=520.6502.030 F CR		1	+1,00	
=530.6502.063 FV C		1	STD. X 6LD360-360/C	
=530.6502.064 FV CR		1	+0,50	
=530.6502.065 F CR		1	+1,00	
222+	500.8480.023 F C	1		
223+	9.1240.017 FV C 10	2		
224	9.7565.004 FV C 10	5		
225	9.1760.042 S 10	5	X AVV.EL./EL.ST. 12V 4A-M 6X1X18	
..	9.9730.015 S C 10	5	X " " " " 12V 12A-M 6X1X30	
226	500.5065.100 FVIC	1		
227	500.6372.077 S IC	1	X 6LD260-260/C-325-325/C	
..	530.6372.075 S C	1	X 6LD360-360/C	
..	530.6372.062 S AC	1	X AVV.EL./ELECTRIC STARTING	
228	530.4570.010 FV C	1	STD.	
..	530.4570.011 N 50	1	X AVV.EL./ELECTRIC STARTING	
229	500.2568.086 S IC	1	X 6LD260-325	
..	503.2568.087 S AC	1	X 6LD260/C-325/C	
..	533.2568.091 D A	1	X 6LD360/C	
..	530.2568.092 S IC	1	X 6LD360	
..	530.2568.078 S AC	1	X AVV.EL./ELECTRIC STARTING	
230	5000.6372.091 E	1	X AVVIAM.MANOV.CON/SENZA IMP.LUCE HAND-CRANK START.WITH/WITHOUT LIGHING SYSTEM FINO A.../UP TO ENG.S.NO...	
..	540.6370.128 N I	1	X AVVIAM.MANOV.CON/SENZA IMP.LUCE HAND-CRANK START.WITH/WITHOUT LIGHING SYSTEM DA.../FROM ENG.S.NO...	
231	500.4701.019 N B 50	1	0,40 X AVV.MAN.CON/SENZA IMP.LUCE	
..	500.4701.020 N B 50	1	0,30 HAND-C.STARTING WITH/WITHOUT	
..	500.4701.021 N B 50	1	0,20 LIGHTING SYSTEM	
..	500.4701.022 S 10	1	0,10 FINO A.../UP TO ENG.S.NO...	
232	500.2568.098 D AC	1	X AVVIAM.MANOVELLA/HAND-C.STARTING	
233	9.1901.032 FVIC 10	1		
234	9.1901.030 FVIC 10	1		
235	5000.9374.036 S	1	DA POMPA AL.A FILTRO COMB. (MM 360) FROM FEED PUMP TO FILTER ON ENGINE	
..	5000.9375.011 N	1	DA POMPA AL.A FILTRO COMB. (MM 1035) FROM FEED PUMP TO REMOTE FUEL FILTER	
236	9.4670.012 FV C 10	1		
237	9.4670.012 FV C 10	1		

FIG. NO.	MATRICOLA P.NO	Q. TA Q.TY	NOTE	REMARKS	GR. 6 - 1.5302.143	PAG. 9
238	5000.9375.240 D A	1		DA FILTRO COMB.A POMPA AL. (MM 368) FROM FUEL FILTER TO FEED PUMP		
239+	70.9180.011 FV C	10	2			
240+	9.3240.009 F C	10	2			
241	9.4670.012 FV C	10	1			
242	9.1901.030 FVIC	10	1			
243+	9.9790.023 FV C	10	1	M 5 X 0,8 X 7		
244+	90.6000.031 FV C	10	1			
245+	9.3203.047 S	10	2			
246	.....					
247+	.....			VEDI/SEE FIG.NO. 254+...		
248+	500.2371.045 S	10	1			
249+	500.5800.096 FV C	10	1			
250+	500.5680.043 S	10	1			
251+	.....			VEDI/SEE FIG.NO. 254+...		
252+	9.8420.002 S	10	1			
253	9.9730.010 S	10	2	M 6 X 1 X 16		
254+183+184+247+250+				SUPPORTO LEVA REGOLATORE		
251+252+255+254+257-				CONTROL LEVER SUPPORT		
=500.8785.061 F IC		1				
255+	9.1200.087 FV C	10	1			
256+	.....			VEDI/SEE FIG.NO. 254+...		
257+	.....			VEDI/SEE FIG.NO. 254+...		
258	500.5655.027 FV C	10	1	STD.		
,,	500.5655.038 S	10	1	X GR.ELETTR./GENERATOR SETS		
252	500.2000.054 S	10	1			
260	9.7625.005 FVBC	10	1			
,,	9.7625.109 SVAC	10	1			
261	9.1585.028 S	10	1	X GR.ELETTR./GENERATOR SETS		
262+263+264=						
=500.8280.022 FV C		10	1			
263+	9.7625.003 S	10	1			
264+	9.1165.003 S	10	1			
265+266+267=						
=500.5200.291 S IC		10	1			
266+	9.7565.004 FV C	10	1			
267+	9.1760.005 F C	10	1	M 6 X 1 X 16		
268+	500.2135.072 FV C	10	1			
269+	500.6410.036 FV C	10	2			
270+	500.5755.045 FV C	10	2			
271+	500.6850.074 FV C	2		LATO DISTRIBUZIONE/GEAR SIDE		
272+	500.4730.017 F C	10	1	0,70 X 6LD260-260/C		
,,	500.4730.026 F C	10	1	0,50		
,,	500.4730.027 F C	10	1	0,80		
,,	500.4730.029 F C	10	1	0,60		
,,	520.4730.030 F C	10	1	0,50 X 6LD325-325/C		
,,	520.4730.031 F C	10	1	0,60		
,,	520.4730.032 F C	10	1	0,70		
,,	520.4730.033 F C	10	1	0,80		
,,	530.4730.039 FV C	10	1	0,50 X 6LD360-360/C		
,,	530.4730.040 F C	10	1	0,60		
,,	530.4730.041 F C	10	1	0,70		
,,	530.4730.042 F C	10	1	0,80		
273	500.4740.018 FV C	10	1			
274	500.4740.025 FV C	10	1			
275	500.9520.046 FVIC	10	1			
276	500.1410.016 FV C	10	2			
277	9.1240.004 F C	10	1			

φ30

FIG. NO.	MATRICOLO P.NO	Q.TA Q.TY	NOTE	REMARKS	GR. 4 - 1.5302.143	PAG. 10
278	9.2280.050 S	10 1				
279	500.7550.006 S	C 10 1				
280	503.1011.049 S	AC 1	X	6LD260/C-325/C-360/C EXT.4SAE(CYL) FINO A... & DA... UP TO ENG.S.NO... & FROM ENG.S.NO...		
..	543.1011.078 E	1	X	6LD260/C-325/C-360/C EXT.4SAE(CYL) DA... & FINO A... FROM... & UP TO ENG.S.NO...		
..	5030.1011.067 N	A 1	X	6LD260/C-325/C-360/C CLOCKW.ROT.		
281+	9.7626.048 SV	C 10 2				
282+	9.1770.083 S	10 2	M	B X 1,25 X 50		
283+281+282=	=500.1526.030 F	AC 1		BIELLA COMPLETA CONNECTING ROD		
284	360.1640.066 FVIC	1	STD.	X BIELLA/CONNECTING ROD		
..	360.1640.067 FVICR	1	-0,25			
..	360.1640.068 FVICR	1	-0,50			
285	90.6607.001 S	C 1	X	AVVIAM.EL./EL.STARTING 12 V 4 A		
286	9.9730.010 S	10 1	M	6 X 1 X 16		
287+	500.4700.094 S	50 1	0,30	STD & X AVVIAMENTO MANOVELLA		
..	500.4701.003 S	50 1	0,20	.. HAND-C.STARTING		
..	500.4701.015 S	50 1	0,10	.. DA.../FROM ENG.S.NO...		
..	500.4701.017 S	50 1	0,40	..		
288	500.8675.082 FV	C 1	STD. & AVV.EL./EL.START.12 V 4 A & ANCHE AVV.MAN.CON/SENZA IMP.LUCE/ HAND-C.ST.WITH/WITHOUT LIGHT.SYSTEM DA.../FROM ENG.S.NO...			
..	5300.8676.039 S	AC 1	X	AVVIAM.EL./EL.STARTING 12 V 12 A		
289	9.1210.092 FV	C 10 1	X	6LD260-325-360		
..	9.1213.001 FV	C 10 1	X	6LD260/C-325/C-360/C		
290	500.5065.101 FVIC	1				
291	9.9790.037 FV	C 10 2	M	6 X 1 X 8		
292	9.7565.007 FV	C 10 2				
293	5000.6480.036 S	B 1	X	PER AVV.MANOV.CON/SENZA IMP.LUCE HAND-C.ST.WITH/WITHOUT LIGHT.SYST. FINO A.../UP TO ENG.S.NO...		
..	540.6480.041 N	1	X	PER AVV.MANOV.CON/SENZA IMP.LUCE HAND-C.ST.WITH/WITHOUT LIGHT.SYST. DA.../FROM ENG.S.NO...		
294	5000.6275.093 N	10 1	X	AVV.ELETTROGENI/EL.START.		
296	9.4670.016 FV	C 10 1				
297	9.4670.016 FV	C 10 1				
301	500.6585.032 SV	C 1		POMPA ALIMENTAZIONE/FEED PUMP		
303	500.7200.048 SV	C 1				
304+	255.6700.012 FV	C 1				
305+	560.4580.047 FVIC	50 1	1,00			
..	560.4580.049 SV	10 1	0,50			
..	560.4580.050 SV	10 1	0,80			
306+	9.6780.007 S	10 2	M	B X 20 (32)		
308	9.3240.018 F	C 10 1				
309	9.7565.007 FV	C 10 1				
310+311+312=	=500.4936.064 S	I 1	X	GRUPPI ELETTROGENI GENERATOR SETS		
310	500.4990.045 E	B 1				
311+	9.8400.073 N	10 2				
312+	500.5496.060 S	BC 1				
313	9.1755.001 F	BC 10 4	M	5 X 0,8 X 8		
314	9.7555.003 FVBC	10 4				
315	500.4896.002 S	1				
316	9.9810.002 D	10 2				
317	9.8430.023 FV	C 10 1				

FIG. NO.	MATRICOLA P.NO	Q.TA Q.TY	NOTE REMARKS	GR. 6 - 1.5302.143 PAG. 11
318	9.8245.009 FV C 10	6		
319	500.6141.046 SV C	1	STD.	
..	500.6141.059 D	1	GR.ELETTR./GENERATOR SETS	
320+	9.2200.013 FV C 10	1	STD.	
..	9.2280.061 S	10	GR.ELETTR./GENERATOR SETS	
321	9.1585.029 S	1	.. ..	
322	9.1240.077 F C 10	1	.. ..	
323+248+249+320+324+ 563+564=			POMPA OLIO COMPLETA LUB.OIL PUMP ASS.Y	
	=500.6605.044 FVIC	1	STD. X 6LD260-325-360	
	=5000.6605.046 S IC	1	X GR.EL./GEN.SETS 6LD260-325-360	
	=503.6605.045 S I,	1	STD. X 6LD260/C-325/C-360/C	
324+	500.3855.007 S	1	X 6LD260-325-360	
..	503.3855.009 D	1	X 6LD260/C-325/C-360/C	
325+	500.9652.018 FV CR10	1	ASP./INLET SOLO/ONLY X 6LD260-260/C	
..	520.9652.025 FVBCR10	1	VALVOLA ASPIRAZIONE/INLET VALVE	
..	520.9652.040 FVACR10	1	.. ..	
326+	500.3430.070 SVAC 10	2	.. ..	
327+	500.9685.028 FV CR10	1	SCAR./EXH. SOLO/ONLY X 6LD260-260/C	
..	520.9685.039 FVBCR10	1	VALVOLA SCARICO/EXHAUST VALVE	
..	520.9685.051 FVACR10	1	.. ..	
328+245+246+271+304+ 305+306+329+377+415=			BASAMENTO COMPLETO CRANKCASE	
	=500.1510.103 S IC	1	X 6LD260-260/C STD.	
	=520.1510.104 S IC	1	X 6LD325-325/C ..	
	=530.1510.105 FVIC	1	X 6LD360-360/C ..	
329+	500.6850.092 FVIC	2	LATO VOLANO/FLYWHELL SIDE	
330	9.2280.047 FV C 10	1		
331	500.1011.052 S AC	1	STD. X 6LD260-325-360	
..			FINO A... & DA... UP TO ENG.S.NO... & FROM ENG.S.NO...	
..	500.1011.084 S AC	1	STD. X 6LD260-325-360	
..			DA... & FINO A ... FROM... & UP TO ENG.S.NO...	
332	503.1011.053 S IC	1	STD. X 6LD260/C-325/C-360/C	
333	9.9765.076 S 10	1	X 6LD260-325-360	
334	9.1585.004 S	1	X 6LD260/C-325/C-360/C	
335+	9.2280.047 FV C 10	1	X ALBERO/SHAFT STD. CONIC. EXT. A 3 - EXT. 4 (2 PEZZI/PIECES)	
..	9.2280.052 S 10	1	X ALBERO/SHAFT EXT. A 3	
336+	500.9000.069 S 10	2		
337+335+336+338=			X 6LD260-325-360	
	=500.1050.115 F IC	1	STD.CONIC. (MM 300)	
337+336+338=			X 6LD260-325-360	
	=500.1050.122 D IC	1	EXT. A 4 (MM 348,3)	
	=500.1050.126 S IC	1	EXT. 4 (MM 363,4)	
338+	9.2280.048 FV C 10	1		
339	500.1257.008 FV C 10	1		
340	500.1611.012 FVIC	1	STD. LATO VOLANO/FLYWHELL SIDE	
..	500.1611.013 FVICR	1	-0,50 ..	
..	500.1611.014 FVICR	1	-1,00 ..	
341	.....			
342	9.7565.097 FV C 10	4		
343	9.1770.002 F C 10	4	STD. M 8 X 1,25 X 16	
..	9.1770.005 F C 10	4	X AVV.EL./EL.STARTING M 8X1,25X22	
344	9.9790.037 FV C 10	6	M 6 X 1 X 8	
345	9.1760.032 S 10	2	M 6 X 1 X 14	
346	9.7625.092 SV C 10	2		

FIG. NO.	MATRICOLA P.NO	Q.TY	DATA	NOTE	REMARKS
347	9.7555.004	S	C 10 2		
348	9.3240.008	F	C 10 2		
349+	500.4500.091	FV	C 10 1		
350	5000.1595.035	D			
365	9.3240.066	S	10 1		
366	9.7565.011	FV	C 10 1		
367	500.4935.044	S	1		SOLO INGR./GEAR ONLY
..	500.4936.020	S	I		CON COLLARE/WITH GOV.BALLS COLLAR
368	500.2085.072	S	1		
369	9.9730.016	FV	C 10 4		M 6 X 1 X 35
370	9.7565.004	FV	C 10 4		
371	500.1160.011	SV	C 10 1		
372	9.9732.063	D	A 10 9		M 8 X 1,25 X 35
373	9.9730.028	FV	C 10 1		M 8 X 1,25 X 30
374	530.1611.018	FVIC	1		STD. LATO DISTRIBUZ./GEAR SIDE
..	530.1611.019	FVICR	1		-0,50
..	530.1611.020	FVICR	1		-1,00
375	9.1240.077	F	C 10 1		X GR.ELETR./GENERATOR SETS
376	9.1585.029	S	1		
377+	276.8460.055	S	10 2		
378	9.1770.039	S	10 1		M 8 X 1,25 X 28
379	9.7625.060	FV	C 10 1		
380	500.1257.008	FV	C 10 1		
381+	9.2280.050	S	10 1		X ALBERO/SHAFT EXT. 4
..	9.2280.081	N	10 1		X ALBERO/SHAFT EXT. 2 SAE / 3 SAE
382+335+336+338=					X MOTOPOMPE/PUMPING UNITS
=500.1050.118	D	IC	1		EXT. A 3 (MM 391)
=500.1050.119	D	IC	1		EXT. A 3 (MM 343)
382+336+338+381=					X 6LD260-325-360
=500.1050.117	S	IC	1		EXT.4 SAE J 609 A (MM 365,5)
=500.1050.128	N	IC	1		EXT.3 SAE J 609 A (MM 339)
382+336+338=					X 6LD260-325-360
=500.1050.120	D	IC	1		EXT.8 A (MM 352)
=500.1050.121	D	IC	1		EXT.9 SAE J 609 A (MM 365,5)
					FILETTO/THREAD MM 16
=500.1050.123	D	IC	1		EXT.7 SAE J 609 A (MM 338,8)
=500.1050.127	S	IC	1		EXT.9 SAE J 609 A (MM 366,2)
					FILETTO/THREAD MM 26,2
=500.1050.129	N	IC	1		EXT.9 SAE J 609 A (MM 339)
					M 8 - 3/4"
383	9.1760.001	F	C 10 2		M 6 X 1 X 10
384	9.7555.004	S	C 10 2		
385	9.1585.058	S	2		
387	9.8430.019	S	10 1		
388	5000.8965.031	S	1		
389	9.1202.016	FV	C 10 1		
390	270.5801.027	S	A 1		
391	500.7760.045	S	A 1		
392	9.1240.041	S	10 1		
393	270.5455.006	S	C 1		X 6LD260-325-360
..	715.5455.014	S	1		X 6LD260/C-325/C-360/C
394	9.7565.007	FV	C 10 2		
395	5000.8506.005	N	1		
396	5000.8506.007	N	1		
400	9.6780.021	FV	C 10 2		M 8 X 35 (47)
401	9040.2615.021	S	C 1		
402	9040.6612.063	S	A 1		SPIA OLIO/OIL WARNING
403	9040.6612.064	S	A 1		SPIA BATTERIA/BATTERY WARNING
404	9040.5175.119	S	A 10 2		
412+	9.1213.056	FVIC	10 1		

413+	9.3030.028	FV C 10	1	STD.
,,	9.3030.046	S	1	X GIOCHI ASS.RIDOTTI/COVER CASE WITH REDUCED RADIAL CLEARANCE
414+	500.4601.002	S	10	0,30
,,	500.4601.020	S	10	0,20
415+	9.6780.076	FV C 10	5	M 8 X 18 (34)
416	500.9060.011	SV C	1	X AVVIAM.EL./EL.STARTING
417	9.4670.001	FV C 10	1	
418	9.1760.001	F C 10	1	M 6 X 1 X 10
419+336+338=				X 6LD260/C-325/C-360/C
	=503.1050.116	S IC	1	STD. (MM 26+)
	=5030.1050.146	N A	1	ROT.DESTRA/CLOCKWISE ROTATION
420+441+597=				PRESSOSTATO COMPLETO
	=9040.6745.031	FVAC	1	PRESSURE OIL SWITCH
420	2760.5040.098	N	1	INTERRUTTORE A PRESSIONE D'OLIO SWITCH BY PRESSURE OIL
421	276.4670.014	FV C 10	1	X PRESSOSTATO/PRESSURE SWITCH
,,	9.4670.017	FV C 10	1	X INTERRUTTORE/SWITCH BY PRESS.OIL
422	292.5840.065	FV C	1	12 V
,,	5000.5840.075	N	1	24 V
423	5000.2691.034	S B	1	FINO A .../UP TO ENG.S.NO....
,,	540.2690.145	N	1	DA... /FROM ENG.S.NO...
424	283.4970.012	D A	1	
425	283.7885.018	E	1	
,,	283.7885.026	D I	1	
426	9.7565.007	FV C 10	3	
427	9.1770.005	F C 10	3	M 8 X 1,25 X 22
428	292.8335.073	S	10	1
429	530.3790.040	S AC	1	
430	9.3240.018	F C 10	1	
431	9.3240.008	F C 10	2	
432	9.7565.004	FV C 10	2	
433	5300.8546.028	S AC	1	X MOT.AVV./START.ENGINE BOSCH
434	9.7565.007	FV C 10	1	
435	9.7625.012	FV C 10	2	
436	9.1770.004	F C 10	2	M 8 X 1,25 X 20
437	9.7565.004	FV C 10	2	
438	9.1760.003	F C 10	2	M 6 X 1 X 12
440	5000.2118.047	N	10	4
441+	5000.9180.056	FVA	10	4
442	2830.5040.004	FV C	1	
,,	2760.5041.020	FV C	1	BOSCH
451	5000.8760.044	N	1	
452	9.7625.012	FV C 10	2	
453	9.3240.018	F C 10	2	
454	9.7565.007	FV C 10	2	
455	9.1770.006	F C 10	2	M 8 X 1,25 X 25
456+503=				FILTRO COMB.ESTERNO
	=2830.3730.036	F C	1	EXTERNAL FUEL FILTER
457	9.4670.016	FV C 10	2	
458+412+413=				X 6LD260-325-360
	=500.6646.075	S C	1	STD.
	=5000.6646.099	N	1	X GIOCHI ASS.RID./RED.RADIAL CLEAR.
459+507+508=				PORTINA DI FONDO/OIL PAN
	=500.6647.045	S IC	1	STD.
	=5000.6647.046	S IC	1	PROFONDA/DEEP



FIG. NO.	MATRICOLO P.N.O.	Q.TA Q.TY	NOTE	GR. 6	1.5302.143	PAG. 14
460+	500.4601.003	FV C 50	1			
461+	500.4776.016	D	10	1		
462	500.1745.001	F C	1		STD.	
..	5000.1745.002	S C	1		X PORTINA PROFONDA/DEEP OIL PAN	
463	500.2175.019	FV C	1		CARTUCCIA OLIO/OIL FILTER ELEMENT.	
464	500.9680.007	FV C	1			
465	500.9070.012	S C	1			
466	9.4670.021	S	10	1		
467	500.5755.049	FV C	10	1		
468	500.5725.032	FV C	10	1		
469	9.1200.016	FV C	10	1		
470	500.7060.000	FV C	1			
471	500.6427.035	F C	2		STD.	
472	5000.7330.075	D	1		X PRESSOSTATO/PRESSURE SWITCH	
..	5000.7330.138	N	1		X INTERRUETTORE/SWITCH BY PRESS.OIL	
473	9.4670.001	FV C	10	2		
474	9.1901.058	FVIC	10	1		
475	5000.6428.045	D	1		LATO ASPIRAZIONE/INLET SIDE	
..	5000.6428.046	D	1		LATO SCARICO/EXHAUST SIDE	
476	9.6780.008	FV C	10	8	M 8 X 20 (32)	
477	9.3240.066	S	10	2		
478	9.7565.011	FV C	10	2		
479	9.6800.020	FV C	10	2	M 10 X 35 (50)	
480	276.2145.014	F AC	1			
481+	9.1210.030	FV C	10	1	X 6LD260/C-325/C-360/C	
482+481+483=	=503.6646.076	S C	1		X 6LD260/C-325/C-360/C	
483+	9.3000.040	S	1			
484	9.1770.009	S	10	1	M 8 X 1,25 X 35	
485	5300.8546.031	S A	1			
503+	2830.2175.045	FVAC	1		CARTUCCIA COMB./FUEL FILTER ELEMENT	
504	5000.9375.020	N	1		DA FILTRO COMB.A POMPA IN.(MM 1036)	
..	5000.9375.079	N	1		FROM REMOTE F.FILTER TO INJECT.PUMP	
..	5000.9375.079	N	1		DA FILTRO COMB.SUL MOT.A POMPA INJ.	
..	5000.9375.079	N	1		FROM FILTER ON ENGINE TO INJECT.PUMP	
505	9.4670.016	FV C	10	2		
506	9.1901.032	FVIC	10	2		
507+	9.4670.013	FV C	10	1		
508+	9.8965.032	SVA	10	1		
509	9.6780.005	FV C	10	8	M 8 X 18 (30)	
510	9.7565.007	FV C	10	8		
511	9.3240.016	F C	10	8		
512	5000.8506.009	N	1			
513	5000.8506.008	N	1			
514	276.6740.088	FVAC	10	1	X REGOLATORE/REGULATOR SAPRISA	
..	276.6740.089	FVAC	10	1	X REGOLATORE/REGULATOR DUCATI	
..	276.6740.090	FVAC	10	1	X REG.DUCATI CON SPIA CAR.BATTERIA	
					WITH CHARG.BATT.LIGHT	
515+	9.3030.028	FV C	10	1	STD.	
..	9.3030.046	S	1		X GIOCHI ASS.RIDOTTI/COVER CASE	
					WITH REDUCED RADIAL CLEARANCE	
516+412+515+562=	=5000.6646.097	S	1		X FLANG.A & B SAE J609 A	
	=5000.6647.001	N	1		NORMAL	
					CON GIOCHI ASSIALI RIDOTTI	
					WITH REDUCED RADIAL CLEARANCE	
517+	500.4500.091	FV C	10	2		
518	9.7565.007	FV C	10	2		
519	9.3240.019	F C	10	2		
520	9.7565.004	FV C	10	3		
521	9.9790.037	FV C	10	3	M 6 X 1 X 8	
531	9.7625.010	FV C	10	10		

FIG. NO.	MATRICOLA P.NO	Q.TA Q.TY	NOTE REMARKS
535	9.1770.004 F C	10 10	M 8 X 1,25 X 20
536	5000.6428.065 F C	2	X PORTINA PROFONDA/DEEP OIL PAN
537	5000.6428.036 S	1	LATO SCARICO/EXHAUST SIDE
..	5000.6428.037 S	1	LATO ASPIRAZIONE/INLET SIDE
538	9.6780.010 FV C	10 2	M 8 X 22 (34)
539	9.9730.023 N	2	M 8 X 1,25 X 10
540	2760.7362.027 FVIC	1	X AVVIAM.EL./EL.STARTING 12 V 12 A SENZA RICARICA BATTERIA WITHOUT CHARGING BATTERY LIGHT
..	9040.7362.066 FVIC	1	X AVVIAM.EL./EL.STARTING 12V 12 A CON RICARICA BATTERIA WITH CHARGING BATTERY LIGHT
541	9.1770.004 F C	10 2	M 8 X 1,25 X 20
542	9.7565.007 FV C	10 2	
543	9.3240.018 F C	10 2	
544	530.3902.034 S B	1	X AVVIAM.EL./EL.STARTING
545	500.5462.089 FVIC	1	STD.(MOT.CON AVV.FUNE/ROPE STARTING)
..	5000.5462.094 D	1	PRED.PER PROTEZ.(MOT.CON AVV.FUNE) SUITABLE FOR M.GUARD (ROPE STARTING)
546	5000.6927.048 D	1	
547	530.3703.032 D I	1	FILTRO A SECCO/DRY AIRCLEANER STD.
..	5000.3703.098 N	1	SPECIAL K 9994.290
548	530.2175.050 FV C	1	
552	9.3203.047 S	10 5	
561	9.9732.047 N	10 1	M 12 X 1,5 X 20
562+	9.9730.122 N	10 2	X FLANG. SAE M 8 X 1,25 X 35
563+	9.9730.008 S	10 1	M 6 X 1 X 10
564+	9.7565.004 FV C	10 1	
565	9.1760.001 F C	10 4	M 6 X 1 X 10
566	9.9790.037 FV C	10 1	M 6 X 1 X 8
567	260.5390.006 S	1	
568	9.7565.007 FV C	10 1	
569	9.9731.030 S	10 2	M 8 X 1,25 X 12
570	500.4500.091 FV C	10 1	
571+	7.7626.054 FVAC	10 1	
572	9.3240.075 N	10 2	
573+3= =5000.8103.119 N		1	SERBATOIO CON TAPPO RIF.LATERALE F.TANK WITH RIGHT SIDE FILLING CAP (SPECIAL K 9996.799)
574	5000.6010.060 N	1	
575	530.3526.097 N	4	
576	9.7625.012 FV C	10 4	
577	9.1770.009 S	10 4	M 8 X 1,25 X 35
578	5000.1213.143 N	10 1	
579	5000.6495.029 N	1	
580	9.1202.013 FV C	10 1	
581	5000.5625.006 N	10 1	
582	5000.3902.074 N	1	X FILT.OLIO EST./EXTERN.OIL FILTER
583	276.4670.014 FV C	10 1	
584	9.8965.003 FV C	10 1	
585	9.4670.003 FV C	10 1	
586	9.9732.074 D	10 2	M 8 X 1,25 X 20
587	9.4670.039 S	10 1	
588	9.8965.021 FV C	10 1	
589	904.2175.040 FV C	1	CARTUCCIA OLIO/EXTERNAL OIL F.ELEM.
590	9.4670.017 FV C	10 4	
591	5600.5953.048 N	4	
592	8320.9485.029 S	2	TUBO OLIO/OIL TUBE (MM 544)
..	5000.9485.081 N	2	(MM 270)
593	276.7330.066 N	1	
594	5000.9220.028 N	1	
595	5000.3902.129 N	1	X FILT.OLIO STACC./REMOTE OIL FILT.
596	9.7625.109 SVAC	10 1	

FIG. NO.	MATRICOLA P.NO	Q.TA Q.TY	NOTE REMARKS
597+	3600.6491.013	FVAC 1	
598	273.7300.057	SV 1	
599	9.3630.008	F C 10 1	
607	9040.2900.067	S 1	
608	9040.2900.070	S 1	
609	2760.2750.111	S 1	
610	2760.5450.009	S C 1	MANOMETRO OLIO/PRESSURE GAUGE
611	5300.8490.081	D 1	
612	5300.8490.082	D 1	
613	5000.8506.006	D 1	
614	530.5460.188	N A 1	X MOT.CON AVV.EL./EL.START.ENGINES
,,	5000.5460.204	N A 1	PREDISP.PER PROTEZ.(MOT.CON AVV.EL.) SUITABLE FOR M.GUARD (ELECTR.START.)
615	5000.6927.109	N A 1	
619	9.7565.005	N 10 4	X SENZA PULEGGIA/WITHOUT ST.PULLEY
622	270.6685.045	S 1	
623	9.1780.003	F C 10 2	
624	9.7565.011	FV C 10 2	
625	2830.6491.005	FV C 1	
626	9.7625.061	S C 10 2	
627	9.7270.024	FV C 10 1	
628	360.2900.064	D 1	
629+	500.5496.113	FVAC 1	DIAM.=124
43+71+79+147+272+			SERIE GUARNIZIONI
287+305+349+414+460+			GASKET SET
461+517=			
	=500.8180.039	FV CR 1	X 6LD260-260/C
	=520.8180.047	FV CR 1	X 6LD325-325/C
	=530.8180.055	FV CR 1	X 6LD360-360/C

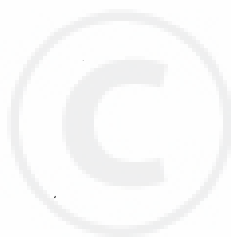
ASRI/GRM

\*\*\*\*\*

15.05.1985

\*\*\*\*\*

DESCRIZIONI NON IMPEGNATIVE/SUBJECT TO MODIFICATIONS



MATERIALE DI RETTIFICA  
GRINDING WORKSHOP PARTS LIST  
MATERIEL POUR RECTIFIEURS

GR. 6 - 1.5302.143  
PAG. 17

MOTORI-ENGINES-MOTEURS GR. 6

FIG. NO.	MATRICOLA P.NO	Q.TA Q.TY	NOTE REMARKS
80+	500.4845.071 FVICR10	1	STD. GUIDA V.ASP./INLET V.GUIDE
,,	500.4845.075 D I R10	1	+0,50
82+	500.4845.030 FV CR10	1	STD. GUIDA V.SCAR./EXHAUST V.GUIDE
,,	500.4845.052 D R10	1	+0.50
141+	500.8000.039 S CR10	1	ASP./INLET SOLD/ONLY X 6LD260-260/C
,,	520.8000.053 FVBCR10	1	SEDE V.ASPIRAZ./INLET V.SEAT
,,	283.8000.036 FVACR10	1	,,
142+	500.8000.038 S CR10	1	SC./EXHAUST SOLD/ONLY X 6LD260-260/C
,,	520.8000.054 FVBCR10	1	SEDE V.SCARICO/EXHAUST V.SEAT
,,	283.8000.037 FVACR10	1	,,
151+	500.8210.065 FV CR10	1	+0,50 X 6LD260-260/C
,,	500.8210.066 S CR10	1	+1,00
,,	520.8210.081 FV CR10	1	+0,50 X 6LD325-325/C
,,	520.8210.082 F CR10	1	+1,00
,,	530.8210.087 FV CR10	1	+0,50 X 6LD360-360/C
,,	530.8210.088 F CR10	1	+1,00
221+151+222+223=			
	=500.6501.091 FV CR	1	+0,50 X 6LD260-260/C
	=500.6501.092 S CR	1	+1,00
	=5030.6500.196 D CR	1	+0,50 X 6LD260/C CLOCKWISE ROTATION
	=5030.6500.197 D CR	1	+1,00
	=520.6502.029 FV CR	1	+0,50 X 6LD325-325/C
	=520.6502.030 F CR	1	+1,00
	=530.6502.044 FV CR	1	+0,50 X 6LD360-360/C
	=530.6502.065 F CR	1	+1,00
284	360.1640.067 FVICR	1	-0,25 X BIELLA/CONNECTING ROD
,,	360.1640.068 FVICR	1	-0,50
325+	500.9652.018 FV CR10	1	VALV.ASP./INLET V. X 6LD260-260/C
,,	520.9652.025 FVBCR10	1	VALVOLA ASPIRAZIONE/INLET VALVE
,,	520.9652.040 FVACR10	1	,,
327+	500.9685.028 FV CR10	1	VALV.SCAR./EXHAUST V. X 6LD260-260/C
,,	520.9685.039 FVBCR10	1	VALVOLA SCARICO/EXHAUST VALVE
,,	520.9685.051 FVACR10	1	,,
340	500.1611.013 FVICR	1	-0,50 LATO VOLANO/FLYWHELL SIDE
,,	500.1611.014 FVICR	1	-1,00
374	530.1611.019 FVICR	1	-0,50 LATO DISTRIBUZ./GEAR SIDE
,,	530.1611.020 FVICR	1	-1,00
43+71+79+147+272+			SERIE GUARNIZIONI
287+305+349+414+460+			GASKET SET
461+517=			
	=500.8180.039 FV CR	1	X 6LD260-260/C
	=520.8180.047 FV CR	1	X 6LD325-325/C
	=530.8180.055 FV CR	1	X 6LD360-360/C