

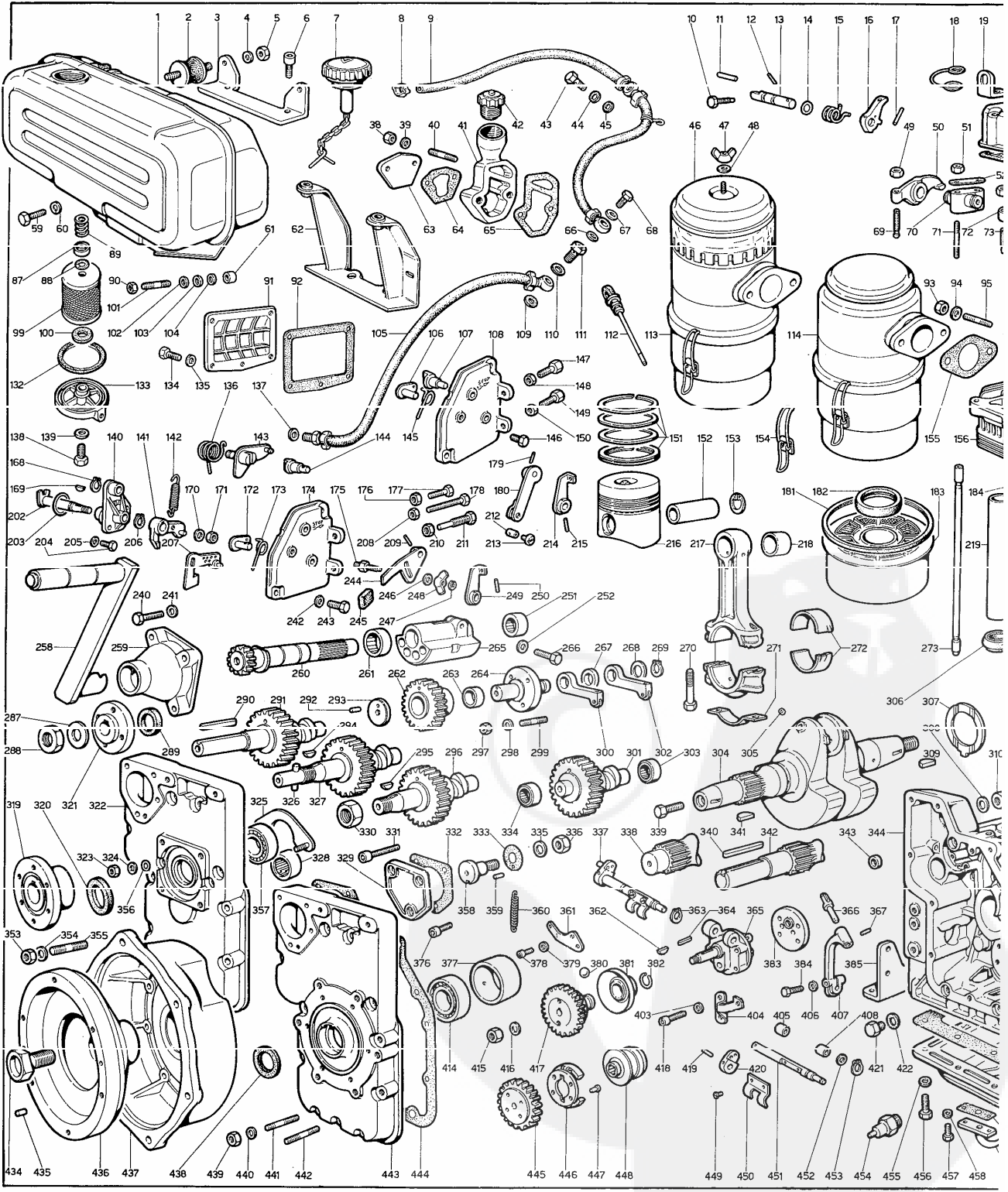
RICAMBI PER MOTORE STANDARD.
 PER APPLICAZIONI SPECIALI CONSULTARE

PIECES POUR DES MOTEURS STANDARD.
 POUR LES APPLICAZIONI SPECIALI CONSULTARE

SPARE PARTS FOR 3
FOR SPECIAL APPLIC
CATALOG AT SERVIC

- 7 710
- 7 720
- 7 723
- 7 725

- 7 LD 600
- 7 LD 665
- 7 LD 740
- 7 LD 665/C
- 7 LD 665/F



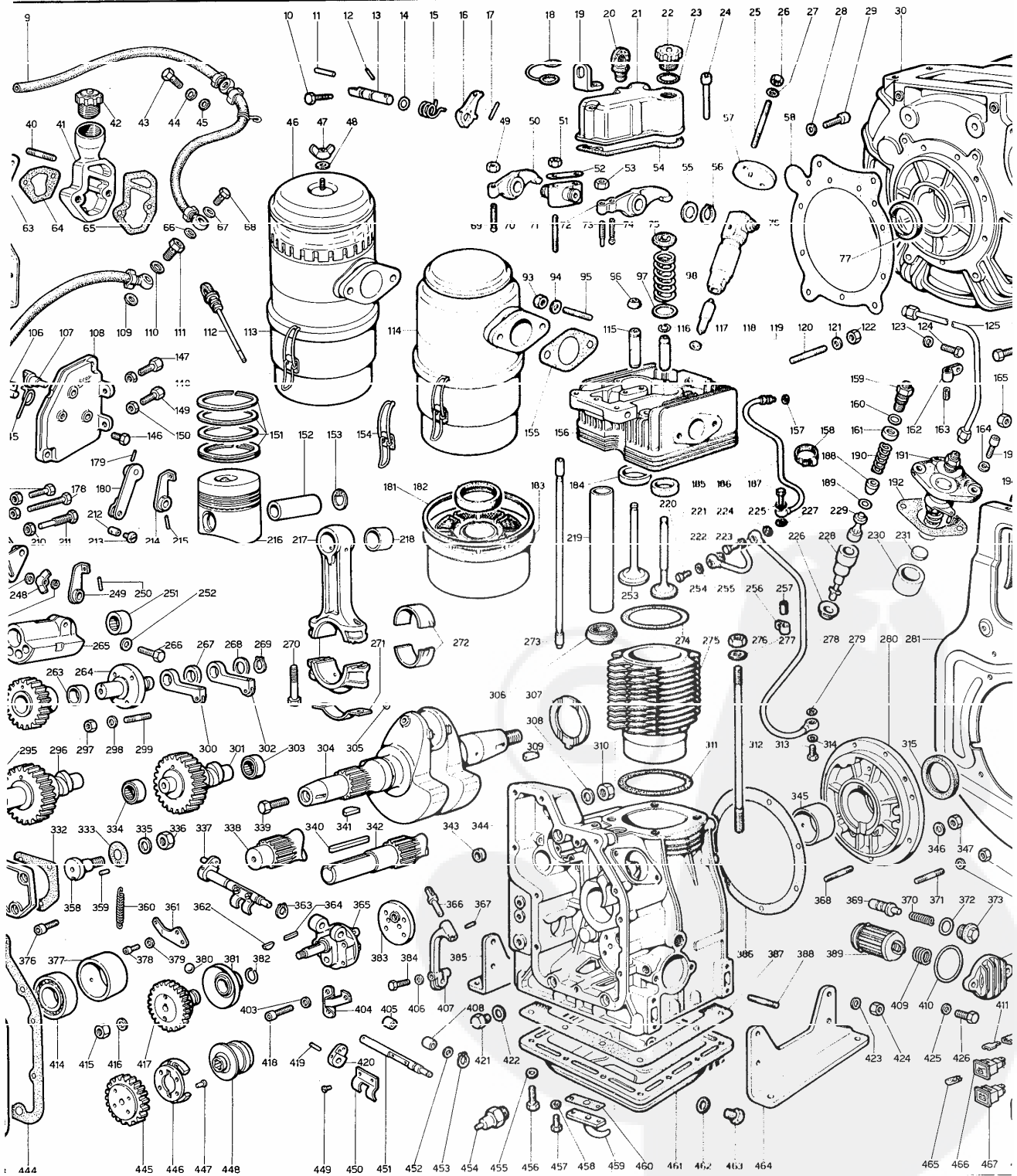
ARD.
CONSULTARE

PIECES POUR DES MOTEURS STANDARD.
POUR LES MOTEURS

SPARE PARTS FOR STANDARD ENGINE.
FOR SPECIAL APPLICATIONS SEE MASTER
CATALOG AT SERVICE CENTERS.

ERSATZTEILE FÜR STANDARD-MO
FÜR SONDERANFERTIGUNGEN SIE
ERSATZTEILKATALOG BEI SERVICE
WERKSTÄTTEN.

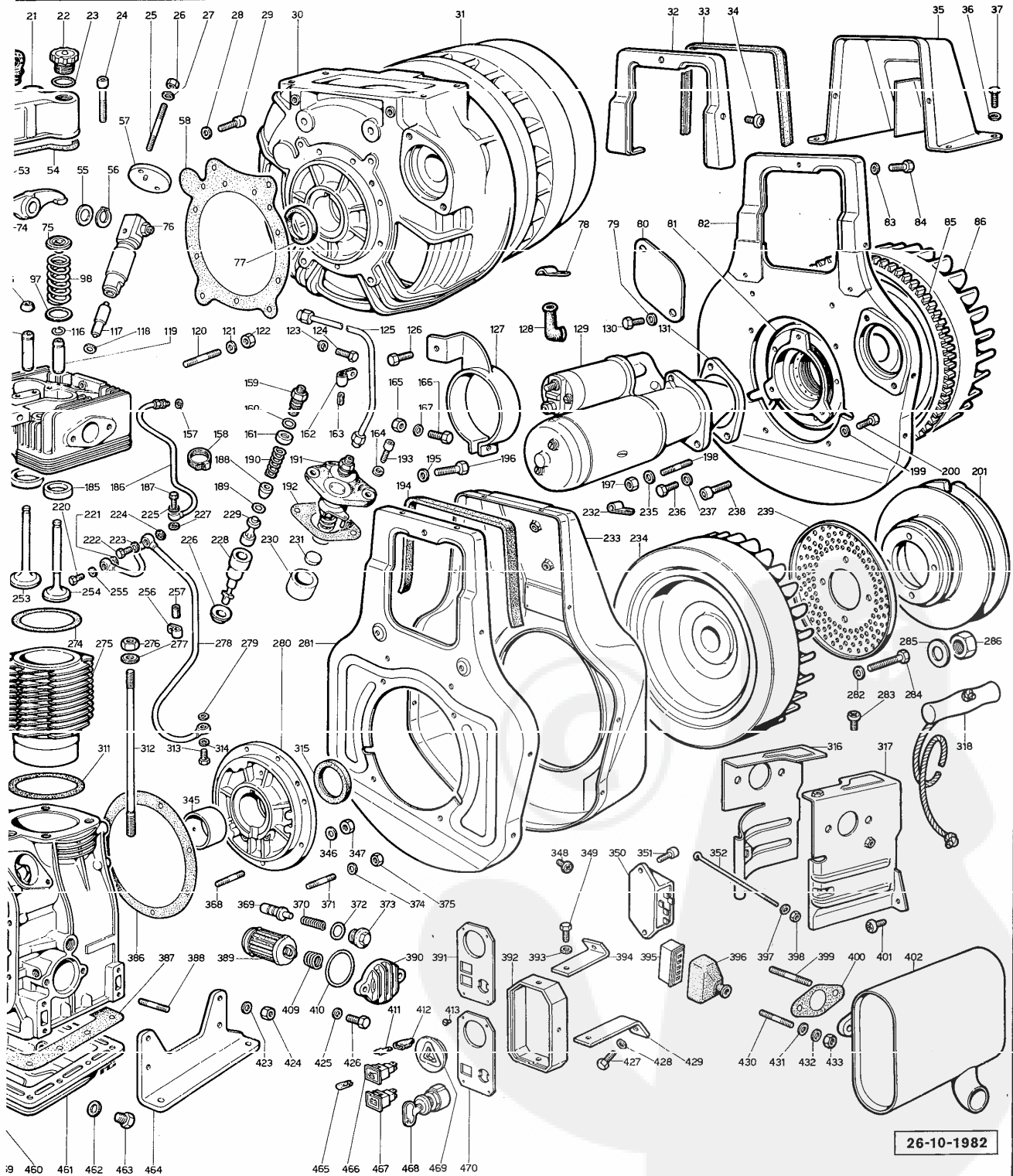
- 7 LD 600
- 7 LD 665
- 7 LD 740
- 7 LD 665/C
- 7 LD 665/F



STANDARD ENGINE.
FOR APPLICATIONS SEE MASTER
CATALOG PART NUMBERS.

ERSATZTEILE FÜR STANDARD-MOTOREN.
FÜR SONDERANFERTIGUNGEN SIEHE
ERSATZTEILKATALOG BEI SERVICE
WERKSTÄTTEN.

REPUESTOS PARA MOTORES STANDARD.
PARA APLICACIONES VEASE CATALOGO
EN LAS ESTACIONES SERVICE.



26-10-1982

LOWE P. DINI F.I.M. S.p.A.

Gr.7

INFORMATICA COMPONENTI

PARTS DATA SHEET

INFORMATIQUE PIÈCES

MOTORI STANDARD TIPO/STD.ENGINE TYPE
MOTEURS STD.TYPE:

- 710....7 LD 600
- 710I....7 LD 600/I
- 715....7 LD 600/F
- 720....7 LD 665
- 720I....7 LD 665/I
- 723....7 LD 665/C
- 725....7 LD 665/F
- 7 LD 740
- 7 LD 740/I
- 7 LD 740/F

VEDI TAVOLA RICAMBI MATR.
SEE SPARE PARTS TABLE P.NO
VOIR TABLEAU PIÈCES DETACHÉES REF. } 1.5302.070

NOTE/REMARKS/REMARQUES

- F PARTICOLARE DI ALTA MOVIMENTAZIONE.
FAST MOVING PART.
PIÈCE D'HAUTE MOUVEMENT.
- S PARTICOLARE DI MEDIA MOVIMENTAZIONE.
MEDIUM MOVING PART.
PIÈCE DE MOYEN MOUVEMENT.
- D PARTICOLARE DI BASSA MOVIMENTAZIONE.
SLOW MOVING PART.
PIÈCE DE BAS MOUVEMENT.
- E AD ESAURIMENTO.
EXHAUSTING PART.
PIÈCE EN ÉPUISEMENT.
- N PARTICOLARE NUOVO O FORNITO SU RICHIESTA.
NEW PART OR PART SUPPLIED UPON REQUEST.
PIÈCE NOUVELLE OU FOURNIE SUR DEMANDE.
- A VALIDO DAL MOTORE... (VEDI CIRC.TECNICA)
VALID FROM ENGINE S.NO. ... (SEE SERVICE LETT.)
VALIDE A PARTIR DU MOTEUR... (VOIR CIRC.TECHNIQUE)
- B VALIDO FINO AL MOTORE...
VEDI SUCCESSIVO "A"-I*
VALID TILL ENGINE S.NO. ...
SEE NEXT SYMBOL "A"-I*
VALIDE JUSQU'AU MOTEUR...
VOIR SYMBOLES SUIVANTES "A"-I*
- I INTERCambiabile. VEDI PRECEDENTE "B"
INTERCHANGEABLE. SEE PREVIOUS SYMBOL "B"
INTERCHANGEABLE. VOIR SYMBOLE "B"
- V STOCK VITALE PER OFFICINE SERVICE.
VITAL STOCK FOR SERVICE DEALER.
STOCK VITAL POUR STATIONS SERVICE.
- C STOCK VITALE PER COSTRUTTORI, ESPORTATORI, ENTI DI STATO.
VITAL STOCK FOR PRODUCERS, EXPORTERS, STATE COMPANIES.
STOCK VITAL POUR CONSTRUCTEURS, EXPORT., INSTITUTIONS DE L'ÉTAT
- R STOCK VITALE PER RETTIFICA.
VITAL STOCK FOR GRINDING WORKSHOPS.
STOCK VITAL POUR USINES DE RECTIFICATION.
- 10/50/2 QUANTITÀ MINIMA FORNIBILE.
LOWEST SUPPLIED QUANTITY.
QUANTITÉ MINIME FOURNIE.
- = GRUPPO COMPLETO/ASSEMBLY/GROUPE COMPLETE.
- + COMPONENTE DEL GRUPPO/ASSEMBLY COMPONENT/COMPOSANT DU GROUPE.

SERIE GUARNIZIONI/GASKET SET.... 710.8180.056
SERIE ACCESSORI/ACCESSORY SET... 710.8140.061
BLOCCO MOTORE/SHORT BLOCK.....
715.8140.062 7LD600/F-665/F
7100.1560.042 7LD600
7200.1560.040 7LD665
7250.1560.071 7LD665/F L.FRANCE
7400.1560.072 7LD740

FIG. NO.	MATRICOLA PART NO.	FIG. NO.	MATRICOLA PART NO.
1+7	710.8102.088 F C STANDARD L.7 *720.8103.035 S * *CON FISSAGGIO ELASTICO *WITH ELASTIC MOUNTING	8	9.3630.002 S 10
2	7100.8635.097 FV C 10 7200.8635.002 S C *	9	7100.9375.033 S C 10
3	7100.8866.051 S C	10+	715.9820.080 N 10
4	9.7565.004 FV C 10	11+	9.8430.023 FV C 10
5	9.3240.018 F C 10	12+	9.8430.057 N
6	9.9732.074 D 10	13+10+11+12+14+15+	
7+	9.9730.024 FV C 10*	16+17=	=710.3348.027 S C
7+	2830.9043.025 FV C	13+	710.1111.025 N
		14+	9.1200.034 FV C 10
		15+	700.5680.069 S 10
		16+	500.5270.078 S
		17+	9.8430.009 S 10
		18	500.3695.038 N
		19+	904.8506.003 S AC 10
		20	270.9055.003 FV C 10
		21+19+24=	=710.2125.085 S IC
		22	710.9032.025 FV C
		23	9.1260.045 SV C 10
		24+	9.9731.040 N 10
		25	9.6760.045 FV C 10
		26	9.3240.008 F C 10
		27	9.7565.004 FV C 10
		28	9.7565.007 FV C 10
		29	9.9730.022 FV C 10
		30+345=	PER MOTORE/FOR ENGINE 600/F-665/F =715.2568.062 D I PER MOTORE/FOR ENGINE 740/F =745.2569.052 N
		31+85=	=7150.9884.092 N PER MOTORE/FOR ENGINE 600/F-665/F CON AVV.MANOV.ED ELETTRICO WITH HAND-CRANK AND EL.STARTING
		31	715.9884.094 D PER MOTORE/FOR ENGINE 600/F-665/F PREDISPOSTO PER AVV.ELETTRICO ELECTR.STARTING FITTING
		32	725.5151.065 D A
		33	725.4570.019 D
		34	9.9790.037 FV C 10
		35	725.2920.091 D A
		36	9.7565.007 FV C 10
		37	9.1770.001 F C 10
		38+	9.3240.018 F C 10
		39+	9.4670.003 V 10
		40+	9.6780.025 S C 10
		41+	710.9580.019 S AC
		42	270.9050.021 FV C
		43	9.1900.002 FV C 10
		44	9.4670.003 V 10
		45	9.4670.003 V 10
		46	904.6727.017 FV C
		47	9.3200.002 S 10
		48	9.7555.004 S C 10
		49+	9.3240.010 F C 10
		50+49+69=	=710.1541.007 S C
		51	9.3240.018 F C 10
		52	904.6330.062 FV C 10
		53+	9.3240.010 F C 10
		54+	710.4400.019 50
		55+	710.7701.022 S C 10
		56	9.1240.007 F 10
		57	500.5790.042 S I
		58	715.4776.051 50 0,30 715.4776.052 50 0,20
		59	9.1770.002 F C 10
		60	9.7565.007 FV C 10
		61	720.3527.004 F 10
		62	7100.8866.049 D
		63+	255.6700.012 FV C
		64+	560.4580.047 I 50 1,00 560.4580.049 N 50 0,50 560.4580.050 N 50 0,80
		65+	710.4580.046 10
		66	9.4670.003 V 10
		67	9.4670.003 V 10
		68	9.1900.002 FV C 10
		69+	270.9850.002 FV C 10
		70+55=	=710.8655.005 D IC
		71	9.6850.051 S C 10
		72+53+73+74=	=710.1541.008 S C
		73+	904.9850.055 S C 10
		74+	270.9850.002 FV C 10
		75	260.6410.018 FV C 10
		76+117=	=710.6615.018 FV C

NO.	MATRICOLO PART NO.	FIG. NO.	MATRICOLO PART NO.	FIG. NO.	MATRICOLO PART NO.
77	9.1213.030 S C 10* *PER MOTORE/FOR ENGINE 600/F-665/F	130	9.1790.027 S 10	170+	9.7625.012 FV C 10 560.6330.069 S *
78	710.3617.024 S 10	131	715.3902.024 N		*GRUPPO ELETTR./EL.GENERATOR
79	9.7565.013 FV C 10	132+	260.4430.071 10	171+	9.7625.012 FV C 10
80	715.6300.021 D			172+	710.5203.080 N
81	283.1156.090 FVIC	133+138+139=	=273.2605.023 F IC	173+	710.5660.026 S 10
82	710.6370.100 D A *	134	9.1770.043 S 10		
	*AVV.ELETTR./EL.STARTING	135	9.7565.007 FV C 10	174+144+172+173+175+	
83	9.7565.007 FV C 10	136+	710.5680.062 S 10	209+244+245+246+247+	
84	9.1770.002 F C 10	137	9.4670.003 V 10	248+249+250=	
85+	PER MOTORE/FOR ENGINE 600-665-740	138+	9.1760.076 N A	=710.2691.037 S	
	710.2816.023 SV C	139+	9.1202.052 N A 10	COMANDO ACC.E STOP A MANO	
	PER MOTORE/FOR ENGINE 600/F-665/F			HAND THROTTLE AND STOP	
	904.5840.035 SV C	140+136+141+143+168+		175+	710.2501.008 D 10
	PER MOTORE/FOR ENGINE 665/C	169+170+171+202+203+		176	9.3240.008 F C 10
	713.2816.026 D C	200-		177	9.1760.027 N 10
		=710.8785.044 S		178	9.1760.083 N 10
86+*	7100.9883.099 S C 600-665	140+136+143+168+170+		9.1760.074 N *	
	=7130.9884.001 D I 665/C	171+2020+203+206+207=		*GRUPPO ELETTR./EL.GENERATOR	
	=740.9885.077 D C 740	PER MOTORE/FOR ENGINE 665/F L.FRANCE		179+	9.3240.018 F C 10
		=710.8785.060 N			9.8430.023 FV C 10
87+	273.3930.019 F C 10	141+	710.5204.003 S	180+	VEDI/SEE NO.108+
88+	9.1200.032 FV C 10	142	PER MOTORE STANDARD	181	291.4776.032 F C 10
89+	273.5575.006 FV C 10		FOR STANDARD ENGINES	182	270.3525.080 F C 10
90	9.3203.019 S I 10		-3000 G/1-RPM	183	272.5496.052 FV C 10
91	710.2640.007 S		710.5655.036 FV C 10	184+	276.8000.031 FV CR10
92+	710.4431.035 50		-2200 G/1-RPM	185+	710.8000.057 FV CR
93	9.3240.037 F C 10		710.5655.054 N	186	710.9485.042 S C
94	9.7555.008 FV C 10		PER GRUPPI ELETTRICI	187	9.1900.064 FV C 10
95	9.6800.004 FV C 10		FOR ELECTR.GENERATORS	188	271.7470.003 S C
96	500.2135.072 FV C 10		-3000 G/1-RPM	189	271.4760.015 D 10
97	710.3430.067 S C 10		710.5655.052 S	190	271.5755.034 S 10
98	260.5755.004 FV C 10		-1800 G/1-RPM	191	PER MOTORE/FOR ENGINE
			710.5655.036 FV C 10	600-600/F-665-665/C-665/F	
99+87+88+89+100+			-1500 G/1-RPM	710.6590.032 SV C	
132+133+138+139=			710.5655.038 U	710.6590.045 D BOSCH	
=273.2720.015 FV C			-665/F L.FRANCE	PER MOTORE/FOR ENGINE	
			725.5655.075 N	740-740/F	
99+	273.2175.009 FV C	143+	710.6165.008 N	192+	500.4580.023 50
100+	273.4490.017 10	144+	710.6141.040 N	500.4580.024 50	
101	9.7625.061 S C 10	145+	710.5660.026 S 10	500.4580.029 50	
102	7200.7701.029 N	146+	9.1760.001 F C 10	193	9.9730.100 FV C 10
103	9.7625.061 S C 10	147	2760.9180.042 FV C 10	194	710.4570.018 50
104	9.7625.061 S C 10	148	9.3240.019 F C 10	195	9.7565.007 FV C 10
105	710.9374.046 FV C	149	2760.9180.042 FV C 10	196	9.1770.002 F C 10
106+	710.5203.080 N	150	9.3240.019 F C 10	197	9.3240.033 F C 10
107+	710.6141.040 N	151+	PER MOTORE/FOR ENGINE	198	9.6800.056 FV C 10
			600-600/F	199	9.7565.004 FV C 10
108+106+107+145+146+			710.8210.083 FV C 10 STD.	200	9.1760.005 F C 10
179+180+214+215=			710.8210.084 FV CR10 +0,50	201	PER MOTORE/FOR ENGINE
=710.2691.038 S C			710.8210.085 S CR10 +1,00	600-665-740	
COMANDO ACC.E STOP A DISTANZA			PER MOTORE/FOR ENGINE	710.6961.021 S C	
ORIZZONTALE			665-665/C-665/F	PER MOTORE/FOR ENGINE 665/C	
HORIZONTAL REMOTE THROTTLE AND			720.8210.089 FV C 10 STD.	713.6961.022 S	
STOP			720.8210.090 FV CR10 +0,50	202+	710.6141.055 D
			720.8210.091 S CR10 +1,00	725.6140.116 N *	
109	9.4670.015 V 10		PER MOTORE/FOR ENGINE	*GRUPPO ELETTR./EL.GENERATOR	
110	9.4670.015 V 10		740-740/F	203+	9.1200.082 FV C 10
111	710.1901.012 N I		740.8211.003 SV C 10 STD.	204	9.1760.005 F C 10
112	270.1400.027 FV C 10		740.8211.004 SV CR10 +0,50	205	9.7565.004 FV C 10
113	272.3702.019 S C		740.8211.005 S CR10 +1,00	206+	9.1240.004 F C 10
114	272.3702.026 F C	152+	710.8480.026 S C	207+	725.5200.142 N *
115+	710.4845.073 FV CR10	153+	9.1240.026 FV C 10	*GRUPPO ELETTR./EL.GENERATOR	
	710.4845.063 FV CR10 +0,50	154	276.4115.048 F C 10	208	9.3240.008 F C 10
116+	710.1160.021 S C 10	155+	710.4501.003 50	209+	9.8430.023 FV C 10
117+	710.6531.033 FVIC			210	9.3240.058 S 10
118	9.4670.005 V 10 0,50	156+115+116+119+184+		211	530.8576.007 FV C
	9.4670.006 V 10 1,00	185=		212	90.6000.031 FV C 10
119+	710.4845.072 FV CR10	=710.9201.054 SV C		213	9.9790.023 FV C 10
	710.4845.062 FV CR10 +0,50	=715.9201.025 S C *		214+	710.5203.011 N
	9.4780.074 FV C 10	*PER DECCOMPRESSIONE		215+	9.8430.023 FV C 10
120	9.7565.007 FV C 10	*WITH DECCOMPRESSION RELEASE			
121	9.7565.007 FV C 10	157	9.4670.003 V 10	216+151+152+153=	
122	9.3240.018 F C 10	158	9.3630.037 N	PER MOTORE/FOR ENGINE	
123	9.7565.007 FV C 10	159	271.7265.008 D	600-600/F	
124	9.1770.042 S 10	160	9.1200.031 FV C 10	=710.6502.048 FV C STD.	
125	710.9374.044 S C	161	260.7980.020 D C 10	=710.6502.049 FV CR +0,5	
126	9.1770.002 F C 10	162	2830.3617.016 S 10	=710.6502.050 S CR +1,0	
127	7100.8546.007 S C	163	260.5390.006 S 10	PER MOTORE/FOR ENGINE	
128	7100.6491.004 S C 10	164	9.7565.007 FV C 10	665-665/C-665/F	
129	PER MOTORE/FOR ENGINE 600-665-740	165	9.3240.018 F C 10	=720.6502.066 FV C STD.	
	710.5840.032 S C	166	9.1770.006 F C 10	=720.6502.067 FV CR +0,5	
	PER MOTORE/FOR ENGINE 600/F-665/F	167	9.7565.007 FV C 10	=720.6502.068 F CR +1,0	
	904.5840.034 FV C	168+	9.1240.004 F C 10	PER MOTORE/FOR ENGINE	
	PER MOTORE/FOR ENGINE 665/F L.FRANCE	169+	9.2260.061 S 10	740-740/F	
	725.5840.074 N 24V			=740.6500.100 SV C STD.	
				=740.6500.101 SV CR +0,5	
				=740.6500.102 S CR +1,0	

FIG. NO.	MATRICOLA PART NO.	FIG. NO.	MATRICOLA PART NO.	FIG. NO.	MATRICOLA PART NO.
217+218+270=	=710.1526.020 F C	740.4730.043 S	10 0,8	327	PER MOTORE/FDR ENGINE
219*	710.1630.012 FV CR	740.4730.077 N	50 0,9		600/F-665/F
219	710.9520.030 S C	740.4730.061 N	50 1,0	328	PER MOTORE/FDR ENGINE
220	9.1900.064 FV C 10	600-600/F			600/F-665/C-665/F
221	9.4670.003 V 10	710.2381.071 SVAC		329	710.2710.045 S C
222	9.1900.064 FV C 10	PER MOTORE/FDR ENGINE		330	9.3260.044 S 10
223	9.4670.003 V 10	665-665/C-665/F		331	9.9730.032 S 10
224	9.4670.003 V 10	720.2381.070 FVAC		332+	710.4431.037 50
225	9.4670.003 V 10	PER MOTORE/FDR ENGINE		333+	710.4560.016 50
226	500.6400.045 SV C 10	740-740/F		334	9.1585.053 F 10
227	9.4670.003 V 10	740.2381.011 SVAC		335	9.7625.055 FV C 10
228	PER MOTORE/FDR ENGINE	9.3240.048 F C 10		336	9.3203.015 S 10
	600-600/F-665-665/C-665/F	277	9.7625.055 FV C 10	337+	710.5225.012 S A
	710.6578.018 FV C	278	710.9485.041 S C		
	710.6578.022 S BOSCH	279	9.4670.003 V 10	338+305+309=	PER MOTORE/FDR ENGINE
	PER MOTORE/FDR ENGINE	280	PER MOTORE/FDR ENGINE		600/F-665/C-665/F
	740-740/F		600-665-665/C		=713.1052.022 D C
	740.6578.024 SV C		710.8676.027 S C		PER MOTORE/FDR ENGINE 740/F
229	500.9672.012 F C		PER MOTORE/FDR ENGINE 740		=745.1050.176 N
230	500.7215.035 FV C	281	710.6370.101 S A	339	291.1862.012 S
231	500.6030.036 FV C 10	282	9.7565.011 FV C 10	340	9.2280.050 S 10
232	7100.3617.015 N	283	9.9790.037 FV C 10	341+	9.2280.049 FV C 10
233	710.2569.034 S A 600-665	284	9.1730.010 S 10		
	710.2569.032 S A 665/C	285	9.7625.037 S C 10	342+305+309+341=	PER MOTORE/FDR ENGINE
	740.2569.033 S C 740	286	PER MOTORE/FDR ENGINE		600-600/I-665-665/I
234	710.9882.059 D 600-665		600-665-740		=710.1052.021 D C
	713.9882.060 N 665/C		9.3260.056 F C 10		PER MOTORE/FDR ENGINE
235	9.7625.026 S C 10		PER MOTORE/FDR ENGINE 665/C		740-740/I
236	9.1790.030 N		9.3260.027 S 10		=740.1050.140 D C
237	9.7565.013 FV C 10	287	9.7625.054 N	343	70.1970.039 N 10
238	9.9730.015 S C 10	288	9.3260.044 S 10		
239	710.5096.026 S I	289	9.1213.056 FVIC 10	344+3R+39+40+41+63+	
240	9.1770.007 S 10	290	9.2280.050 S 10	64+65+299+312+368+	
241	9.7565.007 FV C 10	291	713.1011.027 D C CILIND.	371+441+442=	
242	9.7565.007 FV C 10	292	9.8430.036 FV C 10		=740.1510.131 S AC
243	9.1770.001 F C 10	293	710.6275.070 S 10	345+	710.1611.029 FVIC STD.
244+	710.5203.014 N	294	9.2280.054 S 10		710.1611.027 FVIC -0,5
245+	710.6550.021 N 10	295	9.2280.054 S 10		710.1611.028 FVIC -1,0
246+	9.7625.007 S C 10	296	713.1010.088 D C CONIC.	346	9.7565.007 FV C 10
247+	9.1165.003 S 10	297	9.3240.018 F C 10	347	9.3240.018 F C 10
248+	9.3200.002 S 10	298	9.7565.007 FV C 10	348	9.9790.037 FV C 10
249+	710.5203.011 N	299+	9.6790.076 FV C 10	349	9.1760.058 S 10
250+	9.8430.023 FV C 10	300	710.5270.067 S	350	2760.7362.018 FVIC 12V 12A
251	9.1585.043 S	301	PER MOTORE/FDR ENGINE		2760.7362.022 FVIC *12V 12A
252	9.7565.011 FV C 10		600-665-740		*RIC.BATT./WITH CHARG.LIGHT
253	710.9652.030 FV CR10	301	710.1010.071 S C	351	9.9731.092 S C 10
254	710.9685.040 FV CR10	302	710.5270.086 S	352	710.9245.082 S A 10
255	9.4670.003 V 10	303	9.1585.053 F 10	353	9.3240.018 F C 10
256	7100.3617.018 N			354	9.7565.007 FV C 10
257	710.5401.011 D 10	304+305+309+341=		355	9.6780.005 FV C 10
258	715.5455.014 S		PER MOTORE/FDR ENGINE	356	9.1200.001 FV C 10
259	715.6927.003 D		600-600/I-665-665/I	357	PER MOTORE/FDR ENGINE
260	710.1055.024 S C		=710.1052.019 S C		600/F-665/C-665/F
261	9.3030.028 FV C 10		PER MOTORE/FDR ENGINE	358	710.6075.006 D
			740-740/I	359	9.8430.036 FV C 10
			=740.1050.139 S C	360+	710.5550.010 S C 10
262+263=	=710.4990.051 D	305+	500.9000.038 FV C 10	361+	710.6371.082 D 10
262+	710.1610.072 S	306	70.4740.017 FV C 10	362+	9.2280.061 S 10
264	710.6141.008 S	307	710.1257.013 FV C 10	363+	9.1240.002 D 10
265	710.2537.023 S	308	9.7625.026 S C 10	364+	9.2200.013 FV C 10
266	9.1780.008 S 10	309+	9.2280.056 FV C 10		
267	710.7550.007 S 10	310	9.3203.015 S 10	365+337+360+361+	
268	710.7701.022 S C 10	311+	740.4410.053 50	364+378+379+383=	PER MOTORE/FDR ENGINE
269	9.1240.007 F 10	312+	710.6850.080 S C		600-665-740
270+	9.1780.048 F C 10	313	9.1900.064 FV C 10		=710.6605.039 SVIC
271	710.6330.058 FV C 10	314	9.4670.003 V 10		PER MOTORE/FDR ENGINE
272	710.1640.040 FV C STD.	315	PER MOTORE/FDR ENGINE		600/F-665/C-665/F
	710.1640.052 FV CR -0,25		600-665-740		9.3001.026 D
	710.1640.053 FV CR -0,50		9.1213.006 FV C 10		710.6075.006 D
273	710.1410.027 FV C		PER MOTORE/FDR ENGINE 665/C		9.8430.036 FV C 10
274+	PER MOTORE/FDR ENGINE		9.1213.030 S C 10		710.5550.010 S C 10
	600-600/F	316	710.5066.034 S A		710.6371.082 D 10
	710.4730.059 N 50 0,6	317	710.5066.033 S A		9.2280.061 S 10
	710.4730.072 N 50 0,7	318	283.4055.003 F C 10		9.1240.002 D 10
	710.4730.022 F C 10 0,8	319	2830.5855.002 S		9.2200.013 FV C 10
	710.4730.073 N 50 0,9	320	PER MOTORE/FDR ENGINE		
	710.4730.058 N 50 1,0		600/F-665/C-665/F		
	PER MOTORE/FDR ENGINE		9.1213.056 FVIC 10		
	665-665/C-665/F	321	715.3781.010 D		
	720.4730.065 N 50 0,6	322	PER MOTORE/FDR ENGINE		
	720.4730.074 N 50 0,7		600/F-665/C-665/F		
	276.4730.018 F C 10 0,8		713.6646.062 D		
	720.4730.075 N 50 0,9	323	9.3240.018 F C 10		
	720.4730.064 N 50 1,0	324	9.7565.007 FV C 10		
	PER MOTORE/FDR ENGINE	325	PER MOTORE/FDR ENGINE		
	740-740/F		600/F-665/C-665/F		
	740.4730.062 N 50 0,6		713.6275.083 D		
	740.4730.076 N 50 0,7	326	904.8460.090 D 10		