

RICAMBI  
PIECES  
SPARE PARTS  
ERSATZTEILE  
REPUESTOS

7LD600  
7LD600/I  
7LD600/F

7LD665  
7LD665/I  
7LD665/C  
7LD665/F

7LD740  
7LD740/I  
7LD740/F

LC  
PP  
M

GENUINE ORIGINAL  
REPUES ORIGINAL  
RICAMBI ORIGINAL  
PIECES D'ORIGINE  
GENUINE SPARE PARTS  
ORIGINAL ERSATZTEILE  
REPUESTOS ORIGINALES  
RICAMBI ORIGINALI  
PIECES D'ORIGINE  
GENUINE SPARE PARTS  
ORIGINAL ERSATZTEILE  
REPUESTOS ORIGINALES  
RICAMBI ORIGINALI  
PIECES D'ORIGINE  
GENUINE SPARE PARTS  
ORIGINAL ERSATZTEILE  
REPUESTOS ORIGINALES  
RICAMBI ORIGINALI  
PIECES D'ORIGINE  
GENUINE SPARE PARTS  
ORIGINAL ERSATZTEILE  
REPUESTOS ORIGINALES

LOA  
FABBR  
REGIO  
MAL

SERVICE

LOMBARDINI  
FABBRICA ITALIANA MOTORI s.p.a.  
REGGIO EMILIA, ITALIA  
MADE IN ITALY

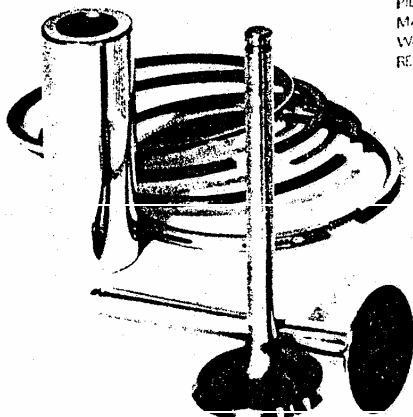
SERIE GUARNIZIONI  
POCHETTE JOINTS  
GASKET SET  
DICHTUNGSATZ  
SERIE JUNTAS

RICAMBI PRIMO IMPIEGO  
PIECES POUR L'ENTRETIEN  
MAINTENANCE SPARE PARTS  
WARTUNG - ERSATZTEILE  
REPUESTOS DE PRONTO EMPLEO

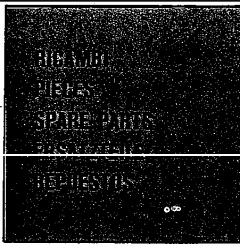
LOMBARDINI MOTORI

LOMBARDINI MOTORI

REF. ORIGINAL  
REPUES ORIGINAL  
RICAMBI ORIGINAL  
PIECES D'ORIGINE  
GENUINE SPARE PARTS  
ORIGINAL ERSATZTEILE  
REPUESTOS ORIGINALES  
RICAMBI ORIGINALI  
PIECES D'ORIGINE  
GENUINE SPARE PARTS  
ORIGINAL ERSATZTEILE  
REPUESTOS ORIGINALES  
RICAMBI ORIGINALI  
PIECES D'ORIGINE  
GENUINE SPARE PARTS  
ORIGINAL ERSATZTEILE  
REPUESTOS ORIGINALES



REPUESTOS ORIGINALES  
ORIGINAL ERSATZTEILE  
GENUINE SPARE PARTS  
PIECES D'ORIGINE  
RICAMBI ORIGINALI



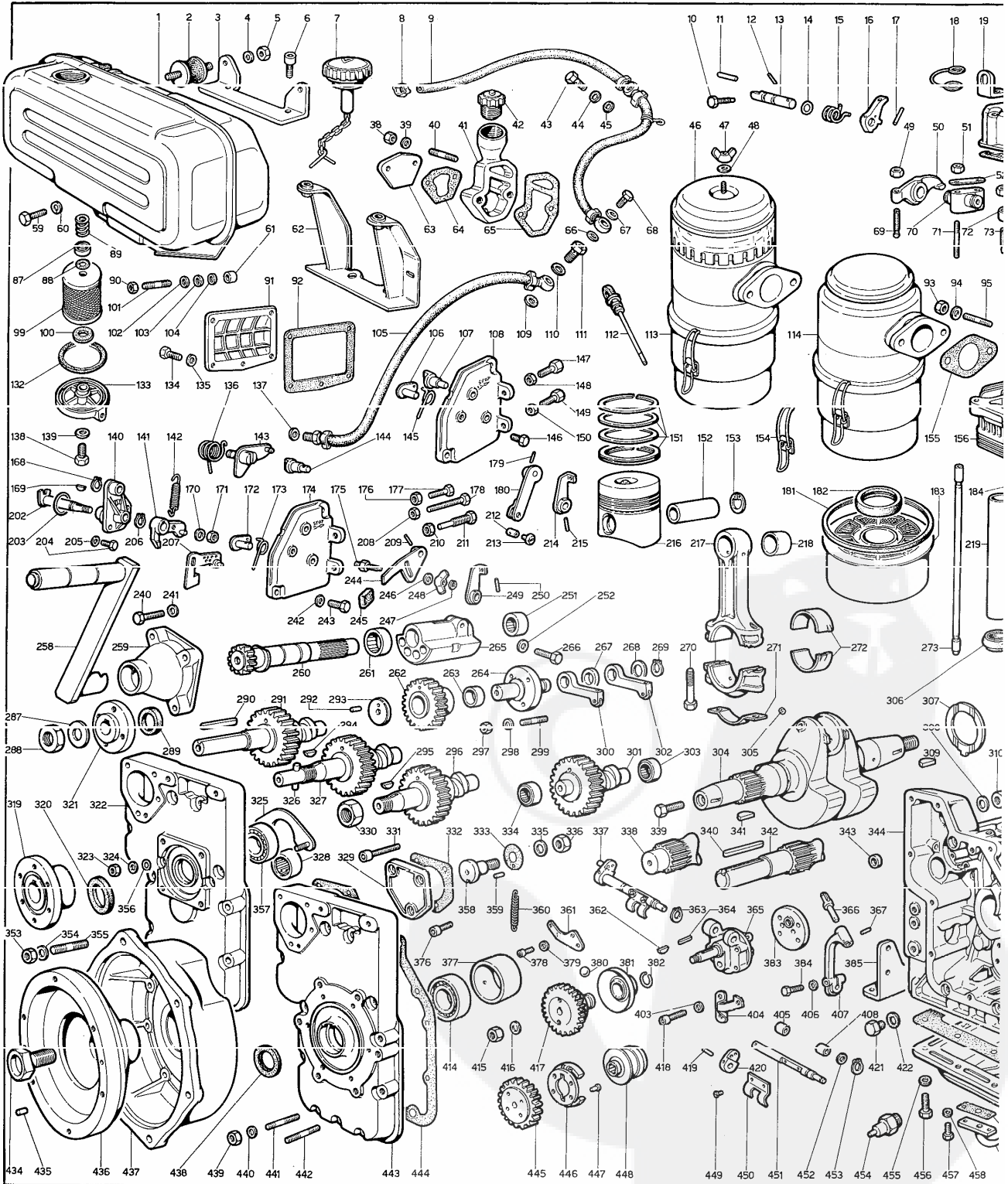
**RICAMBI PER MOTORE STANDARD.**  
 PER APPLICAZIONI SPECIALI CONSULTARE

- 7 710
- 7 720
- 7 723
- 7 725

**PIECES POUR DES MOTEURS STANDARD.**  
 POUR LES APPLICAZIONI SPECIALI CONSULTARE

- 7 LD 600
- 7 LD 665
- 7 LD 740
- 7 LD 665/C
- 7 LD 665/F

**SPARE PARTS FOR 3  
 FOR SPECIAL APPLIC  
 CATALOG AT SERVIC**



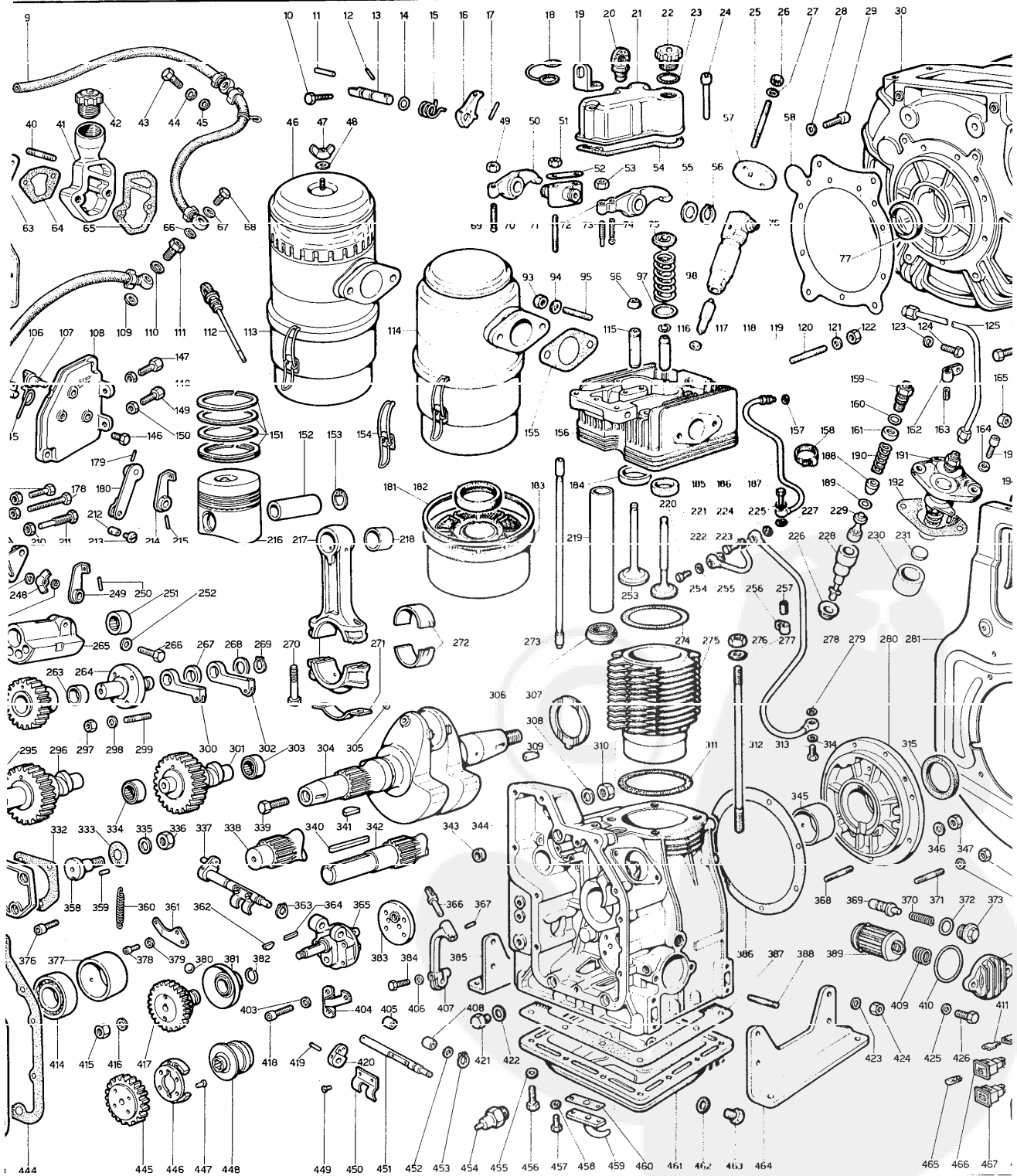
ARD.  
CONSULTARE

PIECES POUR DES MOTEURS STANDARD.  
POUR LES MOTEURS

SPARE PARTS FOR STANDARD ENGINE.  
FOR SPECIAL APPLICATIONS SEE MASTER  
CATALOG AT SERVICE CENTERS.

ERSATZTEILE FÜR STANDARD-MO  
FÜR SONDERANFERTIGUNGEN SIE  
ERSATZTEILKATALOG BEI SERVICE  
WERKSTÄTTEN.

- 7 LD 600
- 7 LD 665
- 7 LD 740
- 7 LD 665/C
- 7 LD 665/F

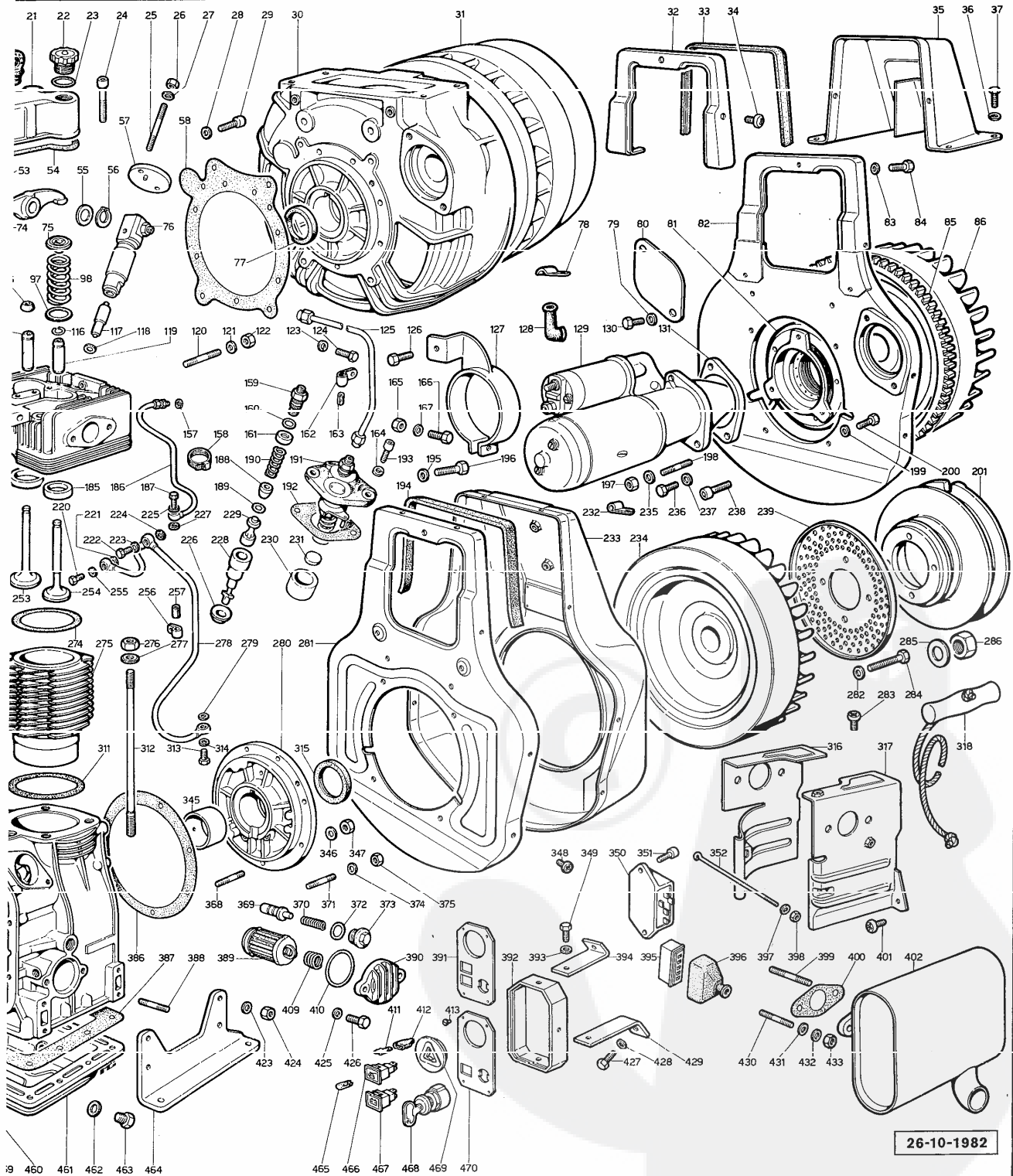




STANDARD ENGINE.  
FOR APPLICATIONS SEE MASTER  
CATALOG ENTRIES.

ERSATZTEILE FÜR STANDARD-MOTOREN.  
FÜR SONDERANFERTIGUNGEN SIEHE  
ERSATZTEILKATALOG BEI SERVICE  
WERKSTATTEN.

REPUESTOS PARA MOTORES STANDARD.  
PARA APLICACIONES VEASE CATALOGO  
EN LAS ESTACIONES SERVICE.



26-10-1982

INFORMATICA COMPONENTI
PARTS DATA SHEET
INFORMATIQUE PIECES

MOTORI STANDARD TIPO/STD.ENGINE TYPE
MOTEURS STD.TYPE-

- 710....7 LD 600
710I...7 LD 600/I
715....7 LD 600/F
720....7 LD 665
720I...7 LD 665/I
723....7 LD 665/C
725....7 LD 665/F
7 LD 740
7 LD 740/I
7 LD 740/F

VEDI TAVOLA RICAMBI MATR.
SEE SPARE PARTS TABLE P.NO
VOIR TABLEAU PIECES DETACHEES REF. } ..... 1.5302.070

NOTE/REMARKS/REMARQUES

- F PARTICOLARE DI ALTA MOVIMENTAZIONE. FAST MOVING PART.
S PARTICOLARE DI MEDIA MOVIMENTAZIONE. MEDIUM MOVING PART.
D PARTICOLARE DI BASSA MOVIMENTAZIONE. SLOW MOVING PART.
E AD ESAURIMENTO. EXHAUSTING PART.
N PARTICOLARE NUOVO O FORNITO SU RICHIESTA. NEW PART OR PART SUPPLIED UPON REQUEST.
A VALIDO DAL MOTORE... (VEDI CIRC.TECNICA)
B VALIDO FINO AL MOTORE... (VEDI CIRC.TECNICA)
I INTERCAMBIABILE. VEDI PRECEDENTE \*B\*
V STOCK VITALE PER OFFICINE SERVICE.
C STOCK VITALE PER COSTRUTTORI, ESPORTATORI, ENTI DI STATO.
R STOCK VITALE PER RETTIFICA.
10/50/2 QUANTITA' MINIMA FORNIBILE.
\* GRUPPO COMPLETO/ASSEMBLY/GROUPE COMPLETE.
+ COMPONENTE DEL GRUPPO/ASSEMBLY COMPONENT/COMPOSANT DU GROUPE.

SERIE GUARNIZIONI/GASKET SET.... 710.8180.056
SERIE ACCESSORI/ACCESSORY SET... 710.8140.061
BLOCCO MOTORE/SHORT BLOCK..... 715.8140.062 7LD600/F-665/F
7100.1560.042 7LD600
7200.1560.040 7LD665
7250.1560.071 7LD665/F L.FRANCE
7400.1560.072 7LD740

Table with 4 columns: FIG. NO., MATRICOLA PART NO., FIG. NO., MATRICOLA PART NO. containing various part numbers and quantities.

FIG. NO. MATRICOLA PART NO.

Table with 3 columns: FIG. NO., MATRICOLA PART NO., and a third column with quantities or descriptions, listing various part numbers like 9.8430.009 S 10, 500.3695.038 N, etc.

NO.	MATRICOLA PART NO.	FIG. NO.	MATRICOLA PART NO.	FIG. NO.	MATRICOLA PART NO.
77	9.1213.030 S C 10* *PER MOTORE/FOR ENGINE 600/F-665/F	130	9.1790.027 S 10	170+	9.7625.012 FV C 10 560.6330.069 S *
78	710.3617.024 S 10	131	715.3902.024 N		*GRUPPO ELETTR./EL.GENERATOR
79	9.7565.013 FV C 10	132+	260.4430.071 10	171+	9.7625.012 FV C 10
80	715.6300.021 D			172+	710.5203.080 N
81	283.1156.090 FVIC	133+138+139=	=273.2605.023 F IC	173+	710.5660.026 S 10
82	710.6370.100 D A *	134	9.1770.043 S 10		
	*AVV.ELETTR./EL.STARTING	135	9.7565.007 FV C 10	174+144+172+173+175+	
83	9.7565.007 FV C 10	136+	710.5680.062 S 10	209+244+245+246+247+	
84	9.1770.002 F C 10	137	9.4670.003 V 10	248+249+250=	
85+	PER MOTORE/FOR ENGINE 600-665-740 710.2816.023 SV C PER MOTORE/FOR ENGINE 600/F-665/F 904.5840.034 SV C PER MOTORE/FOR ENGINE 665/C 713.2816.026 D C	138+	9.1760.076 N A		=710.2691.037 S COMANDO ACC.E STOP A MANO HAND THROTTLE AND STOP
		139+	9.1202.052 N A 10	175+	710.2501.008 D 10
86+*	7100.9883.099 S C 600-665 =7130.9884.001 D I 665/C =740.9885.077 D C 740	140+136+141+143+168+		176	9.3240.008 F C 10
		169+170+171+202+203+		177	9.1760.027 N 10
		200-		178	9.1760.083 N 10 9.1760.074 N *
			=710.8785.044 S	179+	9.3240.018 F C 10 9.8430.023 FV C 10
87+	273.3930.019 F C 10	140+136+143+168+170+		180+	VEDI/SEE NO.108+
88+	9.1200.032 FV C 10	171+2020+203+206+207=		181	291.4776.032 F C 10
89+	273.5575.006 FV C 10	PER MOTORE/FOR ENGINE 665/F L.FRANCE		182	270.3525.080 F C 10
90	9.3203.019 S I 10	=710.8785.060 N		183	272.5496.052 FV C 10
91	710.2640.007 S	141+	710.5204.003 S	184+	276.8000.031 FV CR10
92+	710.4431.035 50	142	PER MOTORE STANDARD FOR STANDARD ENGINES	185+	710.8000.057 FV CR
93	9.3240.037 F C 10		-3000 G/1-RPM	186	710.9485.042 S C
94	9.7555.008 FV C 10		710.5655.036 FV C 10	187	9.1900.064 FV C 10
95	9.6800.004 FV C 10		-2200 G/1-RPM	188	271.7470.003 S C
96	500.2135.072 FV C 10		710.5655.054 N	189	271.4760.015 D 10
97	710.3430.067 S C 10		PER GRUPPI ELETTRICI FOR ELECTR.GENERATORS	190	271.5755.034 S 10
98	260.5755.004 FV C 10		-3000 G/1-RPM	191	PER MOTORE/FOR ENGINE 600-600/F-665-665/C-665/F 710.6590.032 SV C 710.6590.045 D BOSCH PER MOTORE/FOR ENGINE 740-740/F 710.6590.046 S C BOSCH
			710.5655.052 S	192+	500.4580.023 50 500.4580.024 50 500.4580.029 50
99+87+88+89+100+			-1800 G/1-RPM	193	9.9730.100 FV C 10
132+133+138+139=			710.5655.036 FV C 10	194	710.4570.018 50
=273.2720.015 FV C			-1500 G/1-RPM	195	9.7565.007 FV C 10
			710.5655.036 U	196	9.1770.002 FV C 10
99+	273.2175.009 FV C		-665/F L.FRANCE	197	9.3240.033 FV C 10
100+	273.4490.017 10		725.5655.075 N	198	9.6800.056 FV C 10
101	9.6780.012 FV C 10	143+	710.6165.008 N	199	9.7565.004 FV C 10
102	7200.7701.029 N	144+	710.6141.040 N	200	9.1760.005 F C 10
103	9.7625.061 S C 10	145+	710.5660.026 S 10	201	PER MOTORE/FOR ENGINE 600-665-740 710.6961.021 S C PER MOTORE/FOR ENGINE 665/C 713.6961.022 S 710.6141.055 D
104	9.7625.061 S C 10	146+	9.1760.001 F C 10	202+	710.6141.055 D 725.6140.116 N *
105	710.9374.046 FV C	147	2760.9180.042 FV C 10		*GRUPPO ELETTR./EL.GENERATOR
106+	710.5203.080 N	148	9.3240.019 F C 10	203+	9.1200.082 FV C 10
107+	710.6141.040 N	149	2760.9180.042 FV C 10	204	9.1760.005 F C 10
		150	9.3240.019 F C 10	205	9.7565.004 FV C 10
108+106+107+145+146+		151+	PER MOTORE/FOR ENGINE 600-600/F	206+	9.1240.004 F C 10
179+180+214+215=			710.8210.083 FV C 10 STD.	207+	725.5200.142 N *
=710.2691.038 S C			710.8210.084 FV CR10 +0,50		*GRUPPO ELETTR./EL.GENERATOR
COMANDO ACC.E STOP A DISTANZA			710.8210.085 S CR10 +1,00	208	9.3240.008 F C 10
ORIZZONTALE			PER MOTORE/FOR ENGINE 665-665/C-665/F	209+	9.8430.023 FV C 10
HORIZONTAL REMOTE THROTTLE AND STOP			720.8210.089 FV C 10 STD.	210	9.3240.058 S 10
			720.8210.090 FV CR10 +0,50	211	530.8576.007 FV C
109	9.4670.015 V 10		720.8210.091 S CR10 +1,00	212	90.6000.031 FV C 10
110	9.4670.015 V 10		PER MOTORE/FOR ENGINE 740-740/F	213	9.9790.023 FV C 10
111	710.1901.012 N I		740.8211.003 SV C 10 STD.	214+	710.5203.011 N
112	270.1400.027 FV C 10		740.8211.004 SV CR10 +0,50	215+	9.8430.023 FV C 10
113	272.3702.019 S C		740.8211.005 S CR10 +1,00		
114	272.3702.026 F C	152+	710.8480.026 S C	216+151+152+153=	
115+	710.4845.073 FV CR10	153+	9.1240.026 FV C 10	PER MOTORE/FOR ENGINE 600-600/F	
	710.4845.063 FV CR10 +0,50	154	276.4115.048 F C 10	=710.6502.048 FV C STD.	
116+	710.1160.021 S C 10	155+	710.4501.003 50	=710.6502.049 FV CR +0,5	
117+	710.6531.033 FVIC			=710.6502.050 S CR +1,0	
118	9.4670.005 V 10 0,50	156+115+116+119+184+		PER MOTORE/FOR ENGINE 665-665/C-665/F	
	9.4670.006 V 10 1,00	185=		=720.6502.066 FV C STD.	
119+	710.4845.072 FV CR10		=710.9201.054 SV C	=720.6502.067 FV CR +0,5	
	710.4845.062 FV CR10 +0,50		=715.9201.022 S C *	=720.6502.068 F CR +1,0	
120	9.4780.074 FV C 10		*PER DECCOMPRESSIONE	PER MOTORE/FOR ENGINE 740-740/F	
121	9.7565.007 FV C 10		*WITH DECCOMPRESSION RELEASE	=740.6500.100 SV C STD.	
122	9.3240.018 F C 10	157	9.4670.003 V 10	=740.6500.101 SV CR +0,5	
123	9.7565.007 FV C 10	158	9.3630.037 N	=740.6500.102 S CR +1,0	
124	9.1770.042 S 10	159	271.7265.008 D		
125	710.9374.044 S C	160	9.1200.031 FV C 10		
126	9.1770.002 F C 10	161	260.7980.020 D 10		
127	7100.8546.007 S C	162	2830.3617.016 S 10		
128	7100.6491.004 S C 10	163	260.5390.006 S 10		
129	PER MOTORE/FOR ENGINE 600-665-740 710.5840.032 S C PER MOTORE/FOR ENGINE 600/F-665/F 904.5840.034 FV C PER MOTORE/FOR ENGINE 665/F L.FRANCE 725.5840.074 N 24V	164	9.7565.007 FV C 10		
		165	9.3240.018 F C 10		
		166	9.1770.006 F C 10		
		167	9.7565.007 FV C 10		
		168+	9.1240.004 F C 10		
		169+	9.2260.061 S 10		

FIG. NO.	MATRICOLA PART NO.	FIG. NO.	MATRICOLA PART NO.	FIG. NO.	MATRICOLA PART NO.
165+360+361+362+378+363+		419+	9.8430.023 FV C 10		INFORMATICA COMPONENTI MOTORE STD.
179+383+405+408+419+		420+	710.5265.007 S		PARTS DATA SHEET STD. ENGINE TYPE
20+449+450+451+452+		421	9.6965.003 FV C 10		INFORMATIQUE PIECES MOTEUR TYPE
D3=		422	9.4670.015 V 10		710....7 LD 600
PER MOTORE/FDR ENGINE		423	9.7565.029 S C 10		7101....7 LD 600/I
665/F L.FRANCE		424	9.3240.033 F C 10		715....7 LD 600/F
*715.6605.043 N A		425	9.7565.007 FV C 10		720....7 LD 665
66+	710.6231.032 D	426	9.1770.043 S 10		7201....7 LD 665/I
67+	9.8430.002 N 10	427	9.1760.001 F C 10		723....7 LD 665/C
68+	9.6780.076 FV C 10	428	9.7565.004 FV C 10		725....7 LD 665/F
69	500.9680.007 FV C	429	7100.8505.086 N		7 LD 740
70	500.5755.049 FV C 10	430	9.6800.050 FVIC 10		7 LD 740/I
71+	9.6780.045 D 10	431	9.7625.019 S C 10		7 LD 740/F
72	9.4670.021 10	432	9.7645.011 FV C 10		
73	500.9070.012 S C	433	9.3240.053 F C 10		
74	9.7565.007 FV C 10	434	2910.1862.013 F IC		
75	9.3240.018 F C 10	435	9.8430.054 S 10		
76	9.9730.025 S 10	436	270.2050.060 S		
77	710.1611.029 FVIC STD.	437	2790.2031.009 S		
	710.1611.027 FVICR -0,5	438	PER MOTORE/FDR ENGINE		
	710.1611.028 FVICR -1,0		600-665-740		
78+	9.9730.008 S 10		9.1210.031 FV C 10		
79+	9.7565.004 FV C 10	439	9.3240.018 F C 10		
80+	9.8245.010 D 10	440	9.7565.007 FV C 10		
81+	VEDI/SEE NO.417	441+	9.6780.011 S 10		
82+	500.1160.011 SV C 10	442+	9.6780.064 S 10		
83+	PER MOTORE/FDR ENGINE	443	PER MOTORE/FDR ENGINE		
	600-665-740		600-665-740		
	710.3855.031 D A		710.6646.016 D C		
	PER MOTORE/FDR ENGINE	444+	710.4601.012 50 0,30		
	600/F-665/C-665/F-740/F		710.4601.038 50 0,20		
	723.3855.029 D A				
34.	9.1760.024 F C 10	445+446+447=			
35	710.6428.027 S C		*710.4935.094 D I *		
36+	710.4700.098 N 50 0,30		*PER GRUPPI ELETTROGENI		
	710.4701.016 N 50 0,10		*FOR ELECTR. GENERATORS		
	710.4701.018 N 50 0,40				
37+	710.4601.011 50	446+	500.5496.060 S C *		
38	9.6800.053 S 10		*PER GRUPPI ELETTROGENI		
39	710.2175.025 FV C		*FOR ELECTR. GENERATORS		
40	710.2751.038 S C	447+	9.7376.034 N 10		
41	9040.5981.018 N	448	500.4896.002 S		
42	9040.2900.060 N	449+	9.9810.002 D 10		
43	9.7625.092 N 10	450+	PER MOTORE/FDR ENGINE		
44	7100.8505.085 N		600/F-665/C-665/F		
45	276.6740.088 FVAC 10		500.5201.034 N		
	SAPRISA		PER MOTORE/FDR ENGINE		
	276.6740.089 FVAC 10		665/F L.FRANCE		
	DUCATI		500.5202.093 N		
	276.6740.090 FVAC 10	451+	PER MOTORE/FDR ENGINE		
	UCATI RIC.BATT./WITH CHARG.LIGHT		600/F-665/C-665/F		
6	276.2145.014 F AC		710.6140.112 N		
7	9.7625.007 S C 10				
8	9.3240.003 F C 10	451+419+420=			
9	9.6800.056 FV C 10		PER MOTORE/FDR ENGINE		
0+	710.4500.097 10		665/F L.FRANCE		
1	9.9790.037 FV C 10		*725.6140.114 N		
2	710.5462.013 SV C	452+	9.7625.079 N		
3	9.7565.004 FV C 10	453+	9.1240.002 D 10		
4	710.8300.042 D	454	276.6745.005 FV C 10		
5+	PER MOTORE/FDR ENGINE	455	9.7565.007 FV C 10		
	665/F L.FRANCE	456	9.1770.056 S 10		
	725.1580.091 S A 10	457	9.1760.005 F C 10		
	9.3030.051 N *	458	9.7565.004 FV C 10		
	*PER GRUPPI ELETTROGENI	459	710.9320.060 D		
	*FOR ELECTR. GENERATORS	460+	710.4740.026 50		
6	9.7565.004 FV C 10	461	710.6646.017 S C		
			7250.6647.053 N *		
I+366+367=			*PORTINA PROFONDA		
*710.5204.004 S			*DEEP OIL PAN		
8+	PER MOTORE/FDR ENGINE	462.	9.4670.016 V 10		
	665/F L.FRANCE	463	9.8965.005 FV C 10		
	725.1580.092 N A 10	464	710.6428.026 S C		
	9.3030.051 N *	465	9040.5175.119 N		
	*PER GRUPPI ELETTROGENI	466	9040.6612.063 N		
	*FOR ELECTR. GENERATORS	467	9040.6612.064 N		
	500.5725.032 FV C 10	468	2760.5041.020 FV C		
	9.1202.007 FV C 10	469	9040.2615.021 S C		
	6100.9180.051 N 10	470	9040.5981.019 N		
	2118.047 N 10				
	9.9820.087 N 10				
	9.3022.037 S INDUSTR.	54+64+65+92+155+192+			
	9.3240.066 S 10	274+311+332+333+386			
	9.7565.011 FV C 10	387+400+444+460=			
+380+381+382=		*710.8180.056 FV CR			
*710.4884.008 S IC		SERIE GUARNIZIONI			
		GASKET SET			
9.9730.016 FV C 10					

PER TAVOLA RICAMBI  
SEE SPARE PARTS TABLE 1.5302.070  
VOIR TABLEAU PIECES DET.  
D70/SERVICE/GRM/AD/MF  
01.12.1982



FIG. NO.	MATRICOLA PART NO.	FIG. NO.	MATRICOLA PART NO.	FIG. NO.	MATRICOLA PART NO.
217+218+270=	=710.1526.020 F C	740.4730.043 S	10 0,8	327	PER MOTORE/FDR ENGINE
219*	710.1630.012 FV CR	740.4730.077 N	50 0,9		600/F-665/F
219	710.9520.030 S C	740.4730.061 N	50 1,0	328	PER MOTORE/FDR ENGINE
220	9.1900.064 FV C 10	PER MOTORE/FDR ENGINE			600/F-665/C-665/F
221	9.4670.003 V 10	600-600/F			9.3030.028 FVC 10
222	9.1900.064 FV C 10	710.2381.071 SVAC		329	710.2710.045 S C
223	9.4670.003 V 10	PER MOTORE/FDR ENGINE		330	9.3260.044 S 10
224	9.4670.003 V 10	665-665/C-665/F		331	9.9730.032 S 10
225	9.4670.003 V 10	720.2381.070 FVAC		332+	710.4431.037 50
226	500.6400.045 SV C 10	PER MOTORE/FDR ENGINE		333+	710.4560.016 50
227	9.4670.003 V 10	740-740/F		334	9.1585.053 F 10
228	PER MOTORE/FDR ENGINE	740.2381.011 SVAC		335	9.7625.055 FV C 10
	600-600/F-665-665/C-665/F	276	9.3240.048 F C 10	336	9.3203.015 S 10
	710.6578.018 FV C	277	9.7625.055 FV C 10	337+	710.5225.012 S A
	710.6578.022 S	278	710.9485.041 S C		
	PER MOTORE/FDR ENGINE	279	9.4670.003 V 10	338+305+309=	PER MOTORE/FDR ENGINE
	BOSCH	280	PER MOTORE/FDR ENGINE		600/F-665/C-665/F
	740-740/F		600-665-665/C		=713.1052.022 D C
229	740.6578.024 SV C		710.8676.027 S C		PER MOTORE/FDR ENGINE 740/F
230	500.9672.012 F C		PER MOTORE/FDR ENGINE 740		=745.1050.176 N
231	500.7215.035 FV C	281	710.6370.101 S A	339	291.1862.012 S
232	500.6030.036 FV C 10	282	9.7565.011 FV C 10	340	9.2280.050 S 10
233	7100.3617.015 N	283	9.9790.037 FV C 10	341+	9.2280.049 FV C 10
	710.2569.034 S A	284	9.1730.010 S 10		
	710.2569.032 S A	285	9.7625.037 S C 10	342+305+309+341=	PER MOTORE/FDR ENGINE
	740.2569.033 S C	286	PER MOTORE/FDR ENGINE		600-600/I-665-665/I
234	710.9882.059 D		600-665-740		=710.1052.021 D C
	713.9882.060 N		9.3260.056 F C 10		PER MOTORE/FDR ENGINE
235	9.7625.026 S C 10		PER MOTORE/FDR ENGINE 665/C		740-740/I
236	9.1790.030 N		9.3260.027 S 10		=740.1050.140 D C
237	9.7565.013 FV C 10	287	9.7625.054 N	343	70.1970.039 N 10
238	9.9730.015 S C 10	288	9.3260.044 S 10		
239	710.5096.026 S I	289	9.1213.056 FVIC 10	344+3R+39+40+41+63+	
240	9.1770.007 S 10	290	9.2280.050 S 10	64+65+299+312+368+	
241	9.7565.007 FV C 10	291	713.1011.027 D C	371+441+442=	
242	9.7565.007 FV C 10	292	9.8430.036 FV C 10		=740.1510.131 S AC
243	9.1770.001 F C 10	293	710.6275.070 S 10	345+	710.1611.029 FVIC STD.
244+	710.5203.014 N	294	9.2280.054 S 10		710.1611.027 FVIC -0,5
245+	710.6550.021 N 10	295	9.2280.054 S 10		710.1611.028 FVIC -1,0
246+	9.7625.007 S C 10	296	713.1010.088 D C	346	9.7565.007 FV C 10
247+	9.1165.003 S 10	297	9.3240.018 F C 10	347	9.3240.018 F C 10
248+	9.3200.002 S 10	298	9.7565.007 FV C 10	348	9.9790.037 FV C 10
249+	710.5203.011 N	299+	9.6790.076 FV C 10	349	9.1760.058 S 10
250+	9.8430.023 FV C 10	300	710.5270.067 S	350	2760.7362.018 FVIC 12V 12A
251	9.1585.043 S	301	PER MOTORE/FDR ENGINE		2760.7362.022 FVIC *12V 12A
252	9.7565.011 FV C 10		600-665-740		*RIC.BATT./WITH CHARG.LIGHT
253	710.9652.030 FV CR10	301	710.1010.071 S C	351	9.9731.092 S C 10
254	710.9685.040 FV CR10	302	710.5270.086 S	352	710.9245.082 S A 10
255	9.4670.003 V 10	303	9.1585.053 F 10	353	9.3240.018 F C 10
256	7100.3617.018 N			354	9.7565.007 FV C 10
257	710.5401.011 D 10	304+305+309+341=		355	9.6780.005 FV C 10
258	715.5455.014 S		PER MOTORE/FDR ENGINE	356	9.1200.001 FV C 10
259	715.6927.003 D		600-600/I-665-665/I	357	PER MOTORE/FDR ENGINE
260	710.1055.024 S C		=710.1052.019 S C		600/F-665/C-665/F
261	9.3030.028 FV C 10		PER MOTORE/FDR ENGINE		9.3001.026 D
			740-740/I	358	710.6075.006 D
262+263=	=710.4990.051 D		=740.1050.139 S C	359	9.8430.036 FV C 10
262+	710.1610.072 S	305+	500.9000.038 FV C 10	360+	710.5550.010 S C 10
264	710.6141.008 S	306	70.4740.017 FV C 10	361+	710.6371.082 D 10
265	710.2537.023 S	307	710.1257.013 FV C 10	362+	9.2280.061 S 10
266	9.1780.008 S 10	308	9.7625.026 S C 10	363+	9.1240.002 D 10
267	710.7550.007 S 10	309+	9.2280.056 FV C 10	364+	9.2200.013 FV C 10
268	710.7701.022 S C 10	310	9.3203.015 S 10		
269	9.1240.007 F 10	311+	740.4410.053 50	365+337+360+361+	
270+	9.1780.048 F C 10	312+	710.6850.080 S C	364+378+379+383=	PER MOTORE/FDR ENGINE
271	710.6330.058 FV C 10	313	9.1900.064 FV C 10		600-665-740
272	710.1640.040 FV C	314	9.4670.003 V 10		PER MOTORE/FDR ENGINE
	710.1640.052 FV CR	315	PER MOTORE/FDR ENGINE		600-665-740
	710.1640.053 FV CR		600-665-740		=710.6605.039 SVIC
			9.1212.006 FV C 10		PER MOTORE/FDR ENGINE
273	710.1410.027 FV C		PER MOTORE/FDR ENGINE 665/C		600/F-665/C-665/F-740/F
274+	PER MOTORE/FDR ENGINE		9.1213.030 S C 10		=713.6605.040 S I
	600-600/F	316	710.5066.034 S A	365+360+361+362+378+363+	
	710.4730.059 N	317	710.5066.033 S A	379+383+405+408+419+	
	710.4730.072 N	318	283.4055.003 F C 10	420+449+450+451+452=	PER MOTORE/FDR ENGINE
	710.4730.022 F C 10 0,8	319	2830.5855.002 S		600-665-740
	710.4730.073 N	320	PER MOTORE/FDR ENGINE		=710.6605.041 N I *
	710.4730.058 N		600/F-665/C-665/F		PER MOTORE/FDR ENGINE
			9.1213.056 FVIC 10		600/F-665/C-665/F-740/F
	PER MOTORE/FDR ENGINE	321	715.3781.010 D		=715.6605.042 N I *
	665-665/C-665/F	322	PER MOTORE/FDR ENGINE		*PER GRUPPI ELETTROGENI
	720.4730.065 N		600/F-665/C-665/F		*FDR ELECTR. GENERATORS
	720.4730.074 N		713.6646.062 D		
	276.4730.018 F C 10 0,8	323	9.3240.018 F C 10		
	720.4730.075 N	324	9.7565.007 FV C 10		
	720.4730.064 N	325	PER MOTORE/FDR ENGINE		
			600/F-665/C-665/F		
	PER MOTORE/FDR ENGINE		713.6275.083 D		
	740-740/F	326	904.8460.090 D 10		
	740.4730.062 N				
	740.4730.076 N				