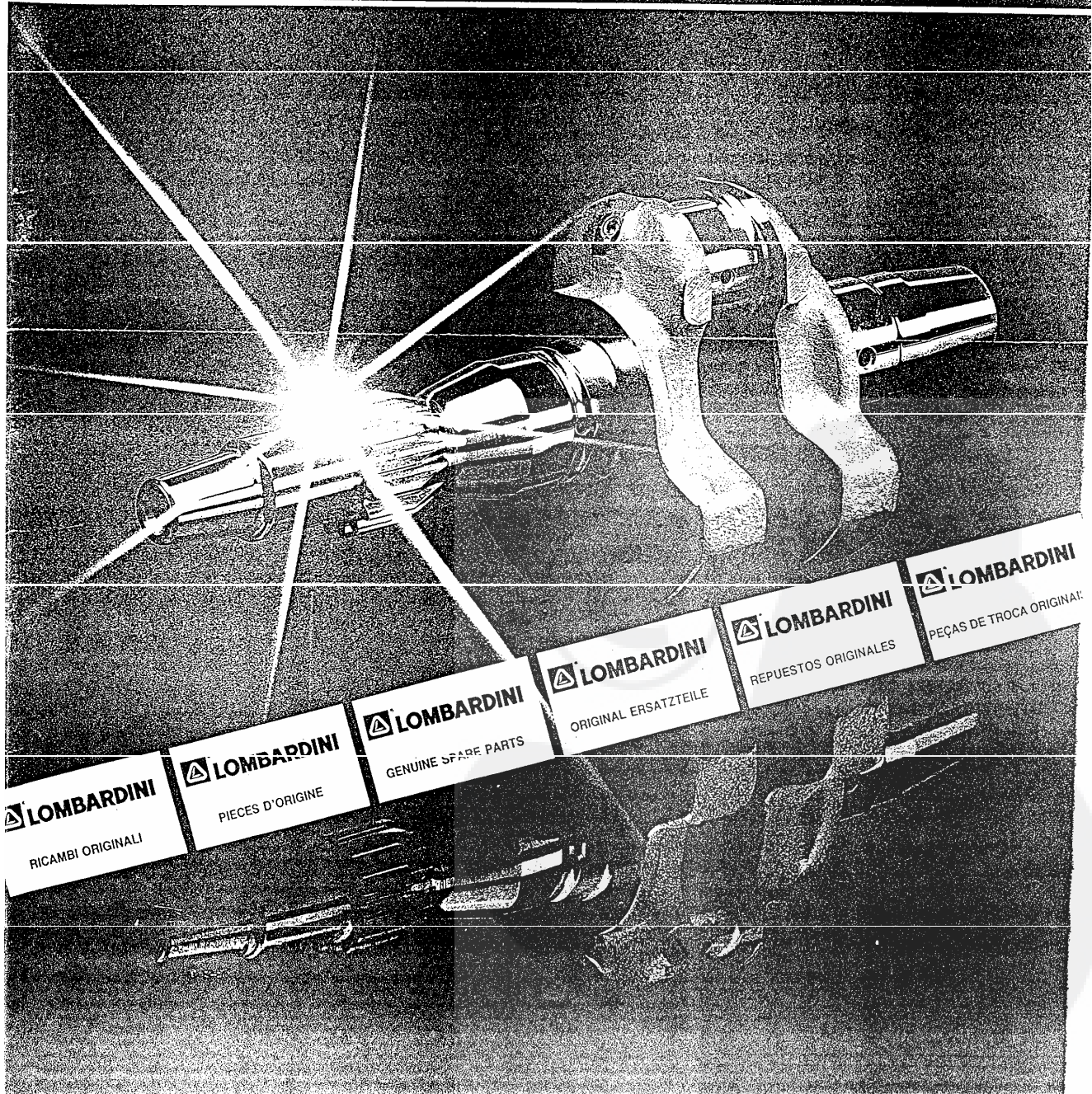


**TAVOLA RICAMBI
TABLEAU PIECES DETACHEES
SPARE PARTS TABLE
ERSATZTEILTAFEL
TABLA DE REPUESTOS
TÁBUA PEÇAS DE TROCA**

**LDW502
LDW602
LDW903
LDW1204
FOCS**

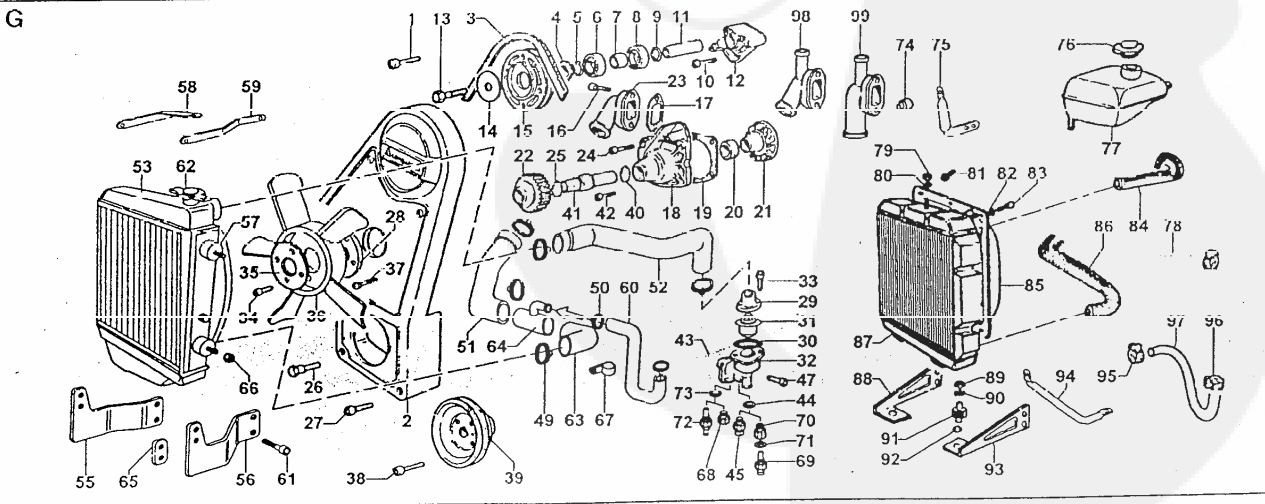
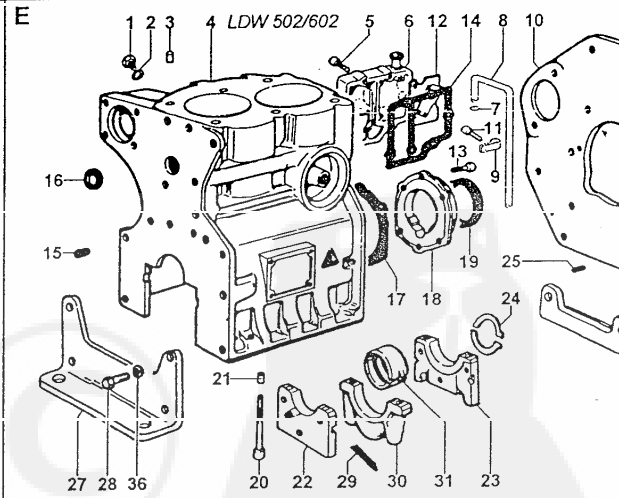
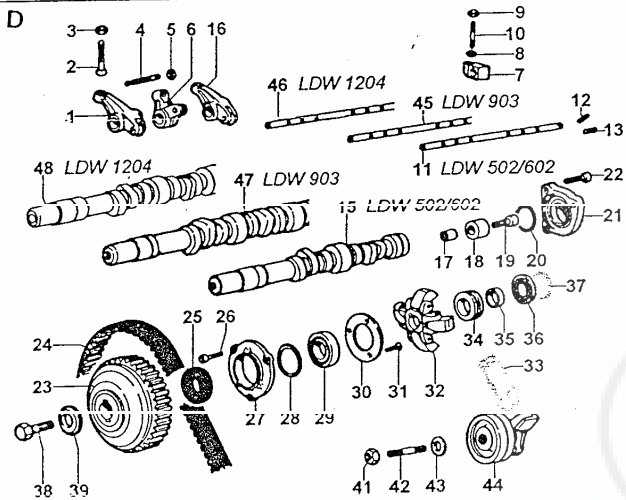
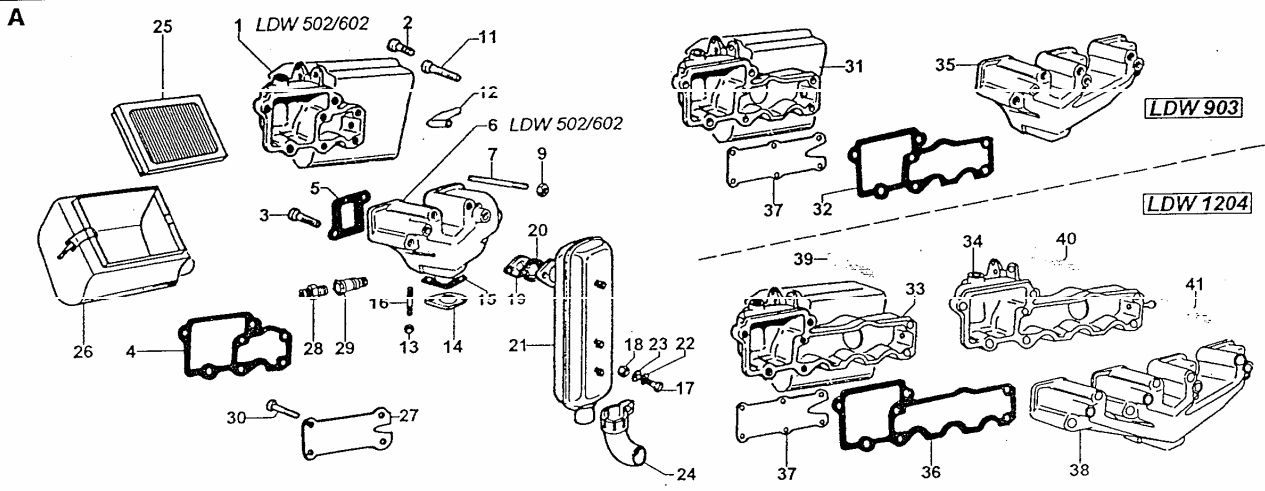


RICAMBI
PIECES
SPARE PARTS
ERSATZTEILE
REPUESTOS
RECÂMBIOS

RICAMBI PER MOTORE STANDARD.
PER APPLICAZIONI SPECIALI
CONSULTARE IL CATALOGO PRESSO I
CENTRI ASSISTENZA E RICAMBI.

PIECES POUR DES MOTEURS
STANDARD.
POUR LES ADAPTATIONS CONSULTER
LE CATALOGUE AUPRES DES AGENTS
SERVICE.

SPARE PARTS FOR STANDARD
ENGINE.
FOR SPECIAL APPLICATIONS SEE
MASTER CATALOG AT SERVICE
CENTERS.

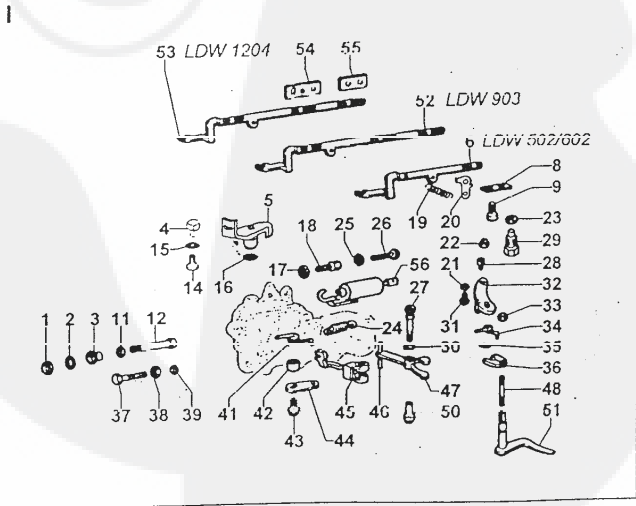
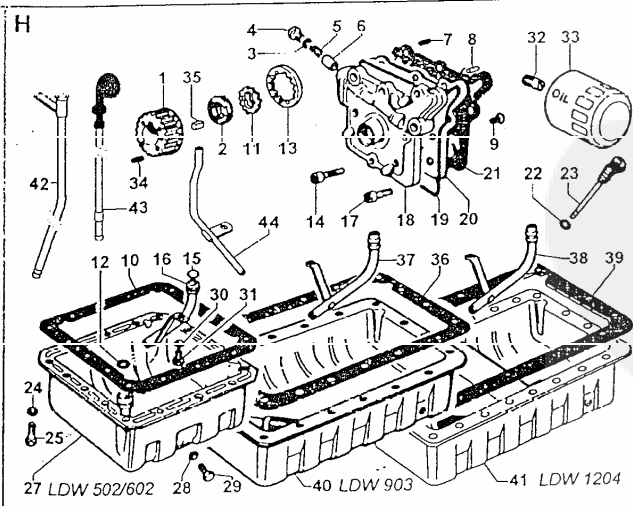
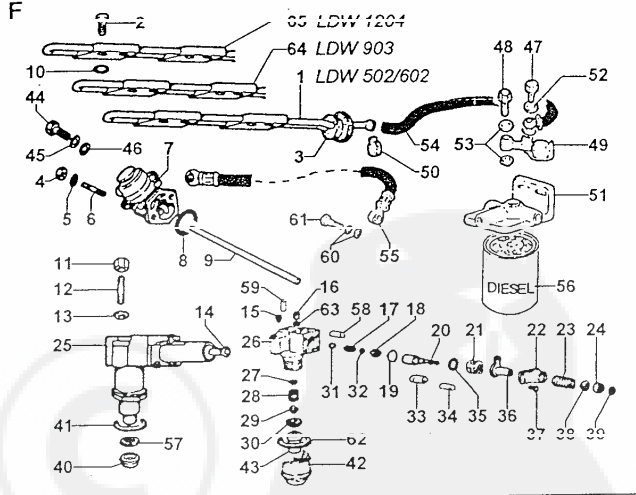
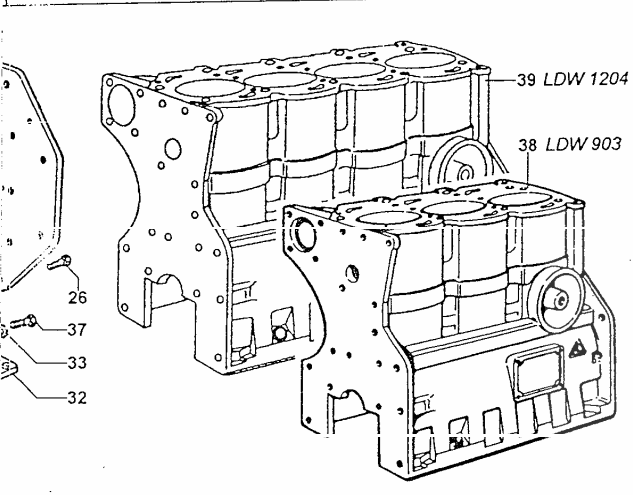
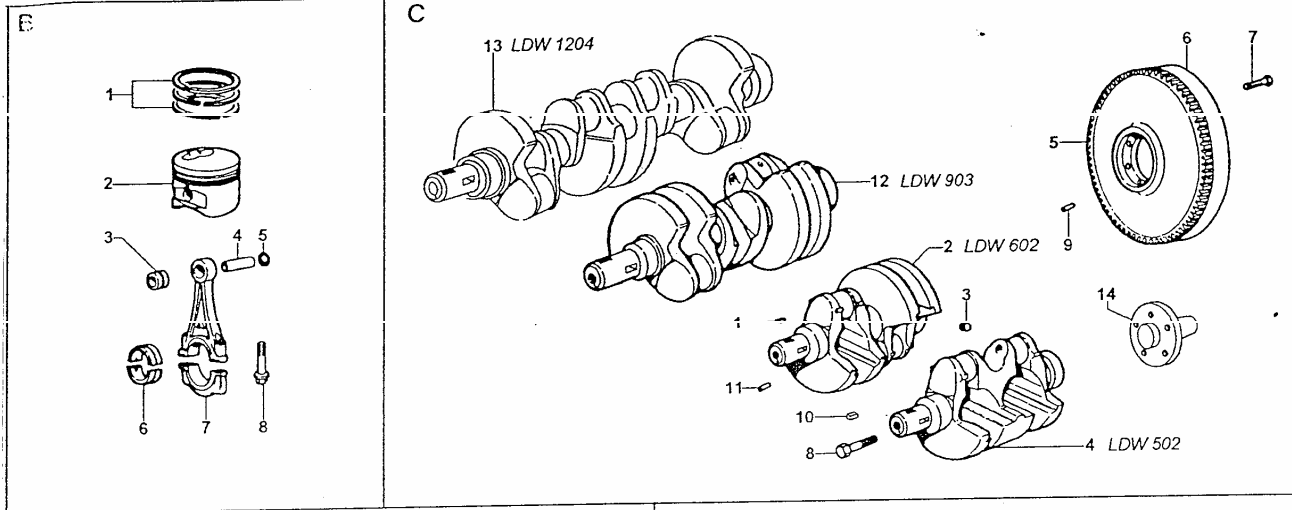


ERSATZTEILE FÜR STANDARD-MOTOREN.
FÜR SONDERANFERTIGUNGEN SIEHE
ERSATZTEILKATALOG BEI SERVICE
WERKSTÄTTEN.

REPUESTOS PARA MOTORES
STANDARD.
PARA APLICACIONES VEASE
CATALOGO EN LAS ESTACIONES
SERVICE.

PEÇAS DE TROCA PARA MOTOR
STANDARD.
PARA APLICAÇÕES ESPECIAIS
CONSULTAR O CATÁLOGO NOS
CENTROS DE ASSISTÊNCIA E PEÇAS
DE TROCA.

GRUPPO
32-33-34
FOCS
Matricola 1.5302.486

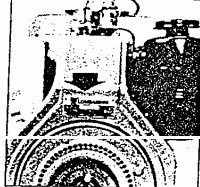


SERVICE

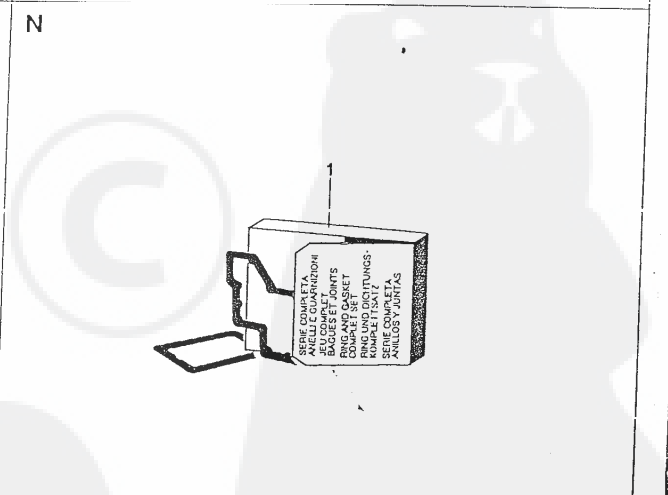
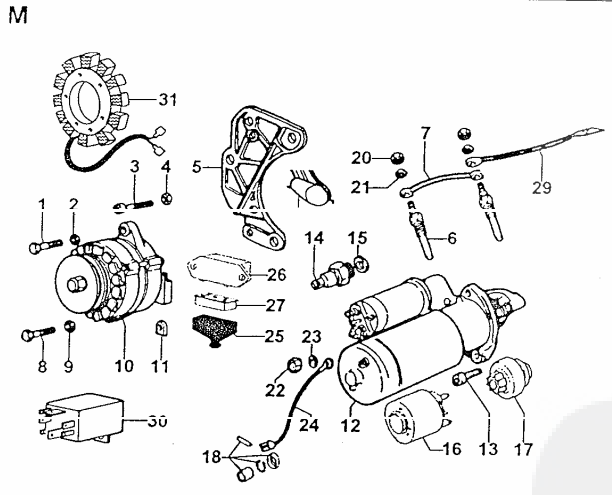
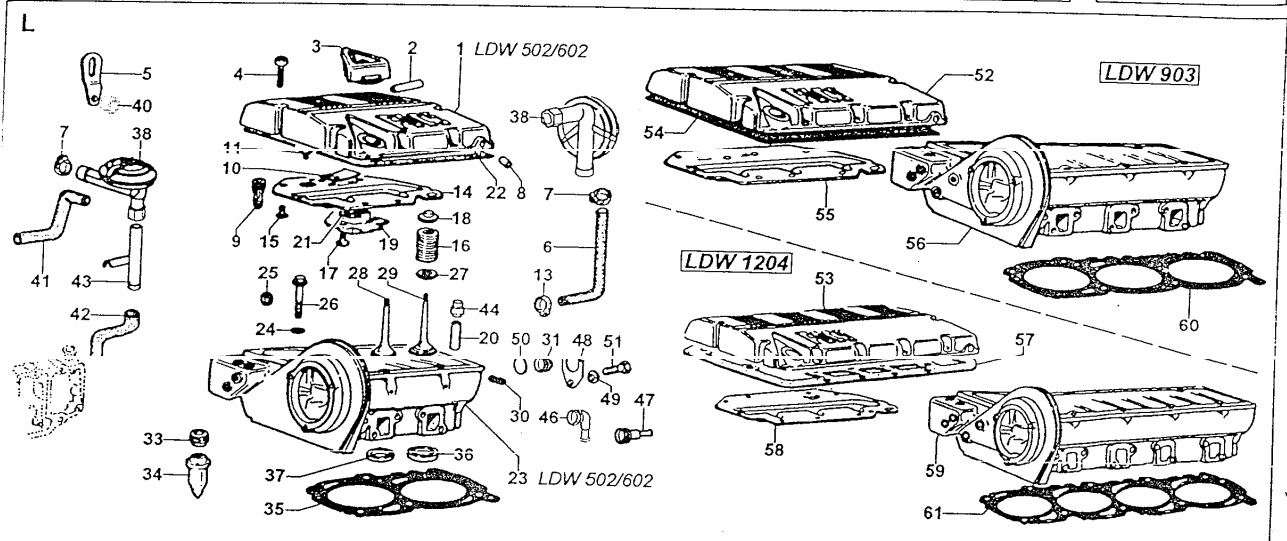
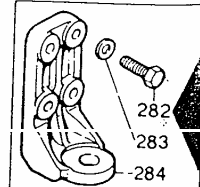
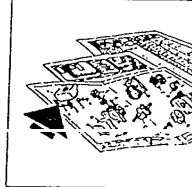
Per assistenza e ricambi rivolgersi a stazioni di servizio autorizzate Lombardini. N. tel. su libretto service e su pagine gialle.
 Pour toute exigence de service après vente et pièces détachées, s'adresser aux Stations de service du réseau Lombardini. N. de téléphone indiqué sur brochure relative au service après vente et annuaire catégorique.
 For spare parts and after sale assistance contact authorized Lombardini service centers. Tel. No. appears on service booklet and telephone directory.
 Für Service und Ersatzteile bitten wir, sich an autorisierte Werkstätte zu wenden. Telef. Nummer laut unserem Service - Büchlein und Fernsprechbuch.
 Para asistencia y repuestos, dirigirse a las estaciones de servicio autorizadas Lombardini. N. Tel. su libretto service y su hojas amarillas.
 Para assistência e recâmbios dirigir-se às estações de serviço autorizadas Lombardini. Número telefone é sobre a caderneta de serviço e sobre as páginas amarelas.

ORDINI RICAMBI
 COMMANDES PIÉCES
 PART ORDERS
 E-TEIL BESTELLUNGEN
 PEDIDOS DE REPUESTOS
 PEDIDOS RECÂMBIOS

TIPO MOTORE - MATRICOLA
 TYPE DE MOTEUR - MATRICULE
 ENGINE TYPE - SERIAL NUMBER
 MOTORTYP - MOTORENUMMER
 TIPO DEL MOTOR - NUMERO DEL MOTOR
 TIPO DE MOTOR - NUMERO DO MOTOR



MATRICOLA DEL RICAMBIO
 REFERENCE DE LA PIECE
 SPARE PART NUMBER
 BESTELLNUMMER DES TEILES
 REFERENCIA DEL REPUESTO
 REFERÊNCIA DO RECÂMBIO



FABBRICA ITALIANA MOTORI S.p.A.
 I2100 REGGIO EMILIA, ITALIA - CAS. POST. 1074
 Tel. (0522) 3891 - Telegr.: LOMBARMOTOR - Telex: 530003 MOTLOM I

LOMBARDINI USA INC.
 LOMBARDINI FRANCE S.A.
 LOMBARDINI MOTOREN GMBH
 LOMBARDINI (U.K.) LTD.
 HISPANOMOTOR S.A.

2150 Boggs Road, Bldg. 300, Suite 300 - Duluth, GA 30126, U.S.A.
 Zone Ind. Nord, Rue du Nizerand, Amas - 69400 Villefranche S/Saône, France
 Bemerstr. 54 - 60437 Frankfurt/Main - Deutschland
 Unit 5, Ferry Mills, Osney Mead - Oxford OX2 0ES, U.K.
 Zona Industrial Cova Solera, s/nº - 08191 RUBI-BARCELONA, España

| ENTE COMPILATORE | COD. LIBRO | MODELLO N° | DATA EMISSIONE | DATA | VISTO |
|-------------------------|------------|------------|----------------|--------------|-------------------|
| TECO/ATL <i>fell</i> | 1.5302.486 | 50650 | 20/10/96 | 20/10/96 | <i>permanenti</i> |
| | | | | REVISIONE 00 | |



LDW "FOCS"

vedi TAVOLA RIC./see SPARE P.TABLE/voir TABLEAU P.DETACH. 1.5302.486

 Ottobre/October/Octobre 1996

MOTORI/ENGINES/MOTEURS Gr.32-33-34

| | | | | |
|--------------------------|---|--------------|------|---------------------------|
| Colonna/Column/Colonne 1 | = | LDW 502 | FOCS | Versione/Standard version |
| " | " | 2 = LDW 602 | FOCS | " " |
| " | " | 3 = LDW 903 | FOCS | " " |
| " | " | 4 = LDW 1204 | FOCS | " " |

Vedi/See/Voir

Libretto Uso e Man./Use-Maint.booklet/Livret Emploi-Entret. 1.5302.310
 Libretto Service/Service directory/Reseau S.A.V. 1.7968.002

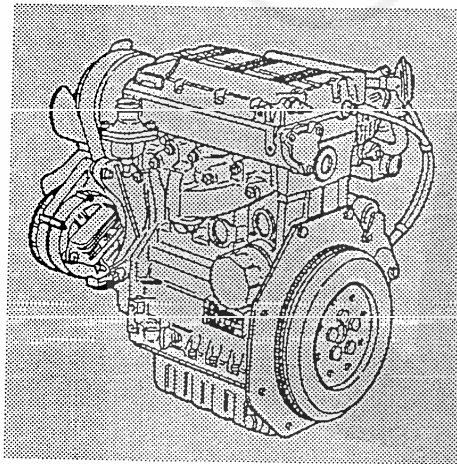
- A - valido dal motore vedi Circolare Tecnica
 from engine S.No see Service Letter
 à partir du moteur voir Circulaire Technique
- B - valido fino al motore vedi Circolare Tecnica
 up to engine S.No. see Service Letter
 jusqu'au moteur voir Circulaire Technique
- I - intercambiabile vedi Circolare Tecnica
 interchangeable see Service Letter
 interchangeable voir Circulaire Technique
- E - ad esaurimento/exhausting part/piece en epuisement.
 npd non più disponibile/no longer available/non plus dispnible
 CT vedi circolare tecnica/see service letter/voir circulaire technique

Descrizioni non impegnative/Subject to modifications/Modifications réservées
 TECO/ATL/Assistenza Tecnica Lombardini/Ottobre 1996

| | | | | | |
|-------------------------------|----------|---|-------------------------------|----------|--|
| Riquadro Drawing Dessin | A | ASPIRAZIONE/SCARICO INTAKE/EXHAUST ADMISSION/ECHAPPEMENT | Riquadro Drawing Dessin | G | RAFFREDDAMENTO COOLING SYSTEM CIRCUIT DE REFROIDISSEMENT |
| Riquadro Drawing Dessin | B | BIELLA/PISTONE/CILINDRO CONN.ROD/PISTON/CYLINDER BIELLE/PISTON/CYLINDRE | Riquadro Drawing Dessin | H | CIRCUITO DI LUBRIFICAZIONE LUBRICATING SYSTEM CIRCUIT DE LUBIFICATION |
| Riquadro Drawing Dessin | C | ALBERO A GOMITO/VOLANO CRANKSHAFT/FLYWHEEL VILEBREQUIN/VOLANT | Riquadro Drawing Dessin | I | COMANDI CONTROLS COMMANDES |
| Riquadro Drawing Dessin | D | DISTRIBUZIONE/REG.GIRI TIMING/SPEED GOVERNOR DISTRIBUTION/REG.VITESSE | Riquadro Drawing Dessin | L | TESTA/CAPPELLO BIL./VALVOLE CYL.HEAD/ROCKER BOX/VALVES CULASSE/COUV.CULB./SOUPAPES |
| Riquadro Drawing Dessin | E | BASAMENTO/PORTINA/PIEDI CRANKCASE/COVER/MOUNTS CARTER/COTE DIST./PIEDS | Riquadro Drawing Dessin | M | AVVIAMENTO STARTING DEMARREUR |
| Riquadro Drawing Dessin | F | CIRCUITO COMBUSTIBILE FUEL SYSTEM CIRCUIT CARBURANT | Riquadro Drawing Dessin | N | SERIE GUARNIZIONI/ANELLI GASKET/O RING SET JEU DE JOINTS/BAGUES |

Tipo motore
 Engine type
 Type moteur

LDW 502
 LDW 602
 LDW 903
 LDW 1204



Blocco motore
 Short block
 Bloc moteur

| LDW 502 - 602 - 903 - 1204 FOCS vedi Tavola Ric./see Parts Table 1.5302.486 | | | | LDW 502 | LDW 602 | LDW 903 | LDW 1204 |
|--|--------------------|--------------|---|-------------------------------|---------|---------|----------|
| Pos. | Matricola/Part No. | Note/Remarks | | LDW 502 | LDW 602 | LDW 903 | LDW 1204 |
| A 1 | ex 8741.058 | - - npd | -> da/from s.No. 3333991 -> CT 320036 ; -> da/from s.No. 3363241 CT 320036 -> | v | v | | |
| | -> 8741.097 | 107 N A | supporto filtro/air cleaner support | 1 | 1 | | |
| A 2 | 9730.032 | 9 S 10 | vite/screw M 8 X 1,25 X 45 | 2 | 2 | 3 | 4 |
| A 3 | 9732.064 | 9 S 10 | vite/screw M 8 X 1,25 X 30 | 1 | 1 | 1 | 5 |
| A 4 | 4420.050 | 107 FV C 10 | guarn.coll.aspir./inl.manifold joint | 1 | 1 | | |
| A 5 | ex 4420.068 | - - - - - | sostituito da/superseded by - - - - -> | v | v | v | v |
| | -> 4420.070 | 107 FVIC 10 | guarn.coll.scarico/exh.manifold joint | 2 | 2 | 3 | 4 |
| A 6 | 2486.229 | 107 D C | collettore scarico/exhaust manifold | 1 | 1 | | |
| A 7 | 0780.026 | 0 D C 10 | prigioniero/stud M 8 X 55 (67) | 4 | 4 | 6 | 7 |
| A 9 | 3240.163 | 9 FV C 10 | dado/nut | 4 | 4 | 6 | 8 |
| A 11 | ex | - - - - - | -> da/from s.No. 3103239 -> CT 320005 ; -> da/from s.No. 3104274 -> CT 330005 -> | | v | v | |
| | -> 9731.040 | 9 D A | vite/screw M 8 X 1,25 X 60 | 1 | 1 | 1 | 1 |
| A 12 | ex | - - - - - | -> da/from s.No. 3103239 -> CT 320005 -> | | v | v | |
| | ex 9599.116 | - - npd | -> da/from s.No. 3169316 -> CT 320009 -> | v | v | | |
| | ex 9305.072 | - - npd | -> da/from s.No. 3333391 -> CT 320036 ; -> da/from s.No. 3363241 -> CT 320036 -> | | v | v | |
| | -> 9305.081 | 107 N A | tubo drenaggio/blow-by pipe | 1 | 1 | | |
| | ex | - - - - - | -> da/from s.No. 3104274 -> CT 330005 -> | | | v | |
| | ex 9599.116 | - - npd | -> da/from s.No. 3167927 -> CT 330009 -> | | | v | |
| | ex 9305.072 | - - - - - | sostituito da/superseded by - - - - -> | | | v | |
| | -> 9305.082 | 106 N A | tubo drenaggio/blow-by pipe | | | 1 | |
| | ex 9599.116 | - - - - - | sostituito da/superseded by - - - - -> | | | | v |
| | -> 9599.157 | 115 D I | tubo/pipe | | | | 1 |
| A 13 | 3240.163 | 9 FV C 10 | dado/nut M 8 | 2 | 2 | 2 | |
| A 14 | 2925.020 | 904 F C | flangia/flange | 1 | 1 | 1 | |
| A 15 | 4420.015 | 904 FV C 10 | guarnizione scarico/exhaust gasket | 1 | 1 | 1 | |
| A 16 | ex 6780.008 | - - - - - | modifica tecn./technic.improvement -> | v | v | v | |
| | -> 6780.171 | 9 D I 10 | prigioniero/stud M 8 X 22 | 2 | 2 | 2 | |
| A 17 | 1770.005 | 9 F 10 | bullone/bolt M 8 X 22 | 1 | 1 | 1 | |
| A 18 | 3240.018 | 9 FV 10 | dado/nut M 8 | 1 | 1 | 1 | |
| A 19 | 3815.013 | 2760 F C | flangia/flange | 1 | 1 | 1 | |
| A 20 | 4500.079 | 276 FV C 10 | guarnizione/gasket | 1 | 1 | 1 | |
| A 21 | 5460.291 | 5600 N | marmitta/muffler | 1 | 1 | 1 | |
| A 22 | 1565.007 | 9 F C 10 | rondella/washer | 1 | 1 | 1 | |
| A 23 | 7625.019 | 9 S 10 | rondella/washer | 1 | 1 | 1 | |
| A 24 | 9170.052 | 5600 N | terminale/muffler-end | 1 | 1 | 1 | |
| A 25 | 2175.132 | 107 FV C | cartuccia aria/air cleaner element | 1 | 1 | 1 | |
| | 2175.133 | 115 FV C | cartuccia/air cleaner element | | | | 1 |
| A 26 | 2605.076 | 107 N | coperchio/cover | 1 | 1 | 1 | |
| | 2605.080 | 115 S C | coperchio/air clean.element cover | | | | 1 |
| A 27 | ex 5055.049 | 107 B | -> da/from s.No. 3169316 -> CT 320009 -> | v | v | | |
| | -> 5055.055 | 107 N A | lamiera/panel | 1 | 1 | | |
| A 28 | ex 7330.166 | 560 B | -> CT D 016 -> | v | v | v | v |
| | ex 7325.008 | 107 B | -> CT D 019 -> | v | v | v | v |
| | -> 7325.009 | 107 N A | raccordo/union M 10 X 1 h=21 | 1 | 1 | | |
| | -> 7325.010 | 106 N A | raccordo/union M 10 X 1 h=36 | | | 1 | 1 |
| A 29 | ex 8345.010 | - - - - - | non più disp./no more avail.-> CT D 016 -> | v | v | v | v |
| | ex 9700.101 | - - - - - | sostituito da/superseded by - - - - -> | v | v | v | v |
| | ex 9700.100 | - - - - - | sostituito da/superseded by - - - - -> | v | v | v | v |
| | -> 8345.049 | 107 N I | spia elettrica/el.clog.indicator | 1 | 1 | 1 | 1 |
| A 30 | 9730.035 | 9 M 10 | vite/screw M 8 X 1,15 X 65 | 4 | 4 | 6 | 7 |
| A 31 | ex 2486.233 | 106 B | -> da/from s.No. 3104274 -> CT 330005 -> | | | v | |
| | ex 2486.266 | - - - - - | sostituito da/superseded by - - - - -> | | | v | |
| | -> 2486.233 | 106 D IC | collettore asp./inlet manifold | | | 1 | |
| | ex 8741.057 | - - npd | -> da/from s.No. 3374892 -> CT 330032 -> | | | v | |
| | -> 8741.096 | 106 N A | supporto filtro/air cleaner support | | | 1 | |
| A 32 | 4420.051 | 106 FV C 10 | guarn.coll.aspir./inl.manifold joint | | | 1 | |
| A 33 | 8741.098 | 115 D | supporto/air clean.support | | | | 1 |
| A 34 | 2486.257 | 115 D C | collettore aspirazione/inlet manifold | | | | 1 |
| Motore/Engine LDW FOCS 502 Versione/Version 727980 | | | | | | | |
| " " LDW FOCS 602 " " 727630 | | | | | | | |
| " " LDW FOCS 903 " " 727770 | | | | | | | |
| " " LDW FOCS 1204 " " 727520 | | | | | | | |
| LOMBARDINI MOTORI F.I.M. S.p.a. | | | | Edizione del/Issue of 10.1996 | | | |



LDW 502 - 602 - 903 - 1204 FOCS
vedi Tavola Ric./see Parts Table 1.5302.486

| Pos. | Matricola/Part No. | Note/Remarks | LDW 502 | LDW 602 | LDW 903 | LDW 1204 |
|---------------|---------------------|---|---------|---------|---------|----------|
| A 35 | ex 2486.230 | - - - - - sostituito da/superseded by - - - - - | | | v | |
| | -> 2486.231 106 I | collettore scarico/exh.manifold | | | 1 | |
| A 36 | 4420.056 115 | guarn.coll.aspir./inl.manifold joint | | | | 1 |
| A 37 | ex 5055.048 - - npd | -> da/from s.No. 3167927 -> CT 330009 -> | | | v | |
| | -> 5055.056 106 A | lamiera/panel | | | 1 | 1 |
| A 38 | 2486.219 115 | collettore scarico/exh.manifold | | | | 1 |
| A 39 | 9730.031 9 | vite/screw M 8 X 1,25 X 40 | | | | 2 |
| A 40 | 9732.063 9 | vite/screw M 8 X 1,25 X 35 | | | | 1 |
| A 41 | 6780.059 9 | prigioniero/stud M 8 x 80 (92) | | | | 1 |
| | | | | | | |
| B 1+ | 8211.141 107 | serie segmenti/ring set std. | 2 | 2 | 3 | 4 |
| | 8211.142 107 | " " " " +0,50 | 2 | 2 | 3 | 4 |
| | 8211.143 107 | " " " " +1,00 | 2 | 2 | 3 | 4 |
| B 2 | ex 6500.707 107 E | -> da/from s.No. 3233570 -> CT 320033 -> | v | | | |
| | ->=6501.101 107 I | PISTONE COMPLETO/PISTON SET std. | 2 | | | |
| | ex 6500.708 107 E | -> da/from s.No. 3233570 -> CT 320033 -> | v | | | |
| | ->=6501.102 107 I | PISTONE COMPLETO/PISTON SET +0,50 | 2 | | | |
| | ex 6500.709 107 E | -> da/from s.No. 3233570 -> CT 320033 -> | v | | | |
| | ->=6501.103 107 I | PISTONE COMPLETO/PISTON SET +1,00 | 2 | | | |
| | ex 6500.710 105 E | -> da/from s.No. 3203108 -> CT 320025 ; | | v | | |
| | | -> da/from s.No. 3203109 -> CT 330022 ; | | | v | |
| | | -> da/from s.No. 3203110 -> CT 340012 -> | | | | v |
| | ->=6500.995 105 I | PISTONE COMPLETO/PISTON SET std. | | 2 | 3 | 4 |
| | ex 6500.711 - - npd | -> da/from s.No. 3203108 -> CT 320025 ; | | v | | |
| | | -> da/from s.No. 3203109 -> CT 330022 ; | | | v | |
| | | -> da/from s.No. 3203110 -> CT 340012 -> | | | | v |
| | ->=6500.996 105 I | PISTONE COMPLETO/PISTON SET +0,50 | | 2 | 3 | 4 |
| | ex 6500.712 105 E | -> da/from s.No. 3203108 -> CT 320025 ; | | v | | |
| | | -> da/from s.No. 3203109 -> CT 330022 ; | | | v | |
| | | -> da/from s.No. 3203110 -> CT 340012 -> | | | | v |
| | ->=6500.997 105 I | PISTONE COMPLETO/PISTON SET +1,00 | | 2 | 3 | 4 |
| | | (Pos. 1-2-4-5) | | | | |
| B 3+ | ex 1630.020 - - - - | - - - - - sostituito da/superseded by - - - - - | v | v | v | v |
| | -> 1630.035 107 I | bronz. piede biella/small end bushing | 2 | 2 | 3 | 4 |
| B 4+ | ex 8480.055 107 B | -> da/from s.No. 3233570 -> CT 320033 ; | v | | | |
| | | -> da/from s.No. 3203108 -> CT 320025 ; | | v | | |
| | | -> da/from s.No. 3203109 -> CT 330022 ; | | | v | |
| | | -> da/from s.No. 3203110 -> CT 340012 -> | | | | v |
| | -> 8480.087 107 A | spinotto/gudgeon pin | 2 | 2 | 3 | 4 |
| B 5+ | ex 1260.007 9 B | -> da/from s.No. 3233570 -> CT 320033 ; | v | | | |
| | | -> da/from s.No. 3203108 -> CT 320025 ; | | v | | |
| | | -> da/from s.No. 3203109 -> CT 330022 ; | | | v | |
| | | -> da/from s.No. 3203110 -> CT 340012 -> | | | | v |
| | -> 1261.091 107 A | anello seeger/snap ring | 4 | 4 | 6 | 8 |
| B 6+ | ex 1640.101 - - npd | -> da/from s.No. 3535825 -> CT 320065 ; | v | v | | |
| | | -> da/from s.No. 3543911 -> CT 330059 ; | | | v | |
| | | -> da/from s.No. 3535829 -> CT 340051 -> | | | | v |
| | -> 1640.116 107 I | br.t.biel./large end bushing std. | 2 | 2 | 3 | 4 |
| | ex 1640.102 - - npd | -> da/from s.No. 3535825 -> CT 320065 ; | v | v | | |
| | | -> da/from s.No. 3543911 -> CT 330059 ; | | | v | |
| | | -> da/from s.No. 3535829 -> CT 340051 -> | | | | v |
| | -> 1640.117 107 I | br.t.biel./large end bushing -0,25 | 2 | 2 | 3 | 4 |
| | ex 1640.103 - - npd | -> da/from s.No. 3535825 -> CT 320065 ; | v | v | | |
| | | -> da/from s.No. 3543911 -> CT 330059 ; | | | v | |
| | | -> da/from s.No. 3535829 -> CT 340051 -> | | | | v |
| | -> 1640.118 107 I | br.t.biel./large end bushing -0,50 | 2 | 2 | 3 | 4 |
| | | | | | | |
| Motore/Engine | LDW FOCS 502 | Versione/Version 727980 | | | | |
| " | LDW FOCS 602 | Versione/Version 727630 | | | | |
| " | LDW FOCS 903 | Versione/Version 727770 | | | | |
| " | LDW FOCS 1204 | Versione/Version 727620 | | | | |

| LDW 502 - 602 - 903 - 1204 FOCS vedi Tavola Ric./see Parts Table 1.5302.486 | | | | LDW 502 | LDW 602 | LDW 903 | LDW 1204 |
|--|-----------------------|---|--|-------------------------------|---------|---------|----------|
| Pos. | Matricola/Part No. | Note/Remarks | | LDW 502 | LDW 602 | LDW 903 | LDW 1204 |
| D 7 | =1526.104 107 | BIELLA COMPLETA/CONNECTING ROD | | 2 | | | |
| " | =1526.105 105 | " " | | | 2 | 3 | 4 |
| | | (Pos. 3-7-8) | | | | | |
| B 8+ | 1770.101 9 | bullone/bolt | | 4 | 4 | 6 | 8 |
| C 1+ | 2280.119 107 | chiavetta/key | | 1 | 1 | 1 | 1 |
| C 2 | ex 1050.605 105 | B -> da/from s.No. 3383877 -> CT 320045 -> | | | v | | |
| | ex 1050.824 - - - | sostituito da/supersedes by -> CT D 054 -> | | | v | | |
| | ->=1050.845 107 | A ALBERO GOMITO COMPL./CRANKSHAFT ASS.Y | | | 1 | | |
| | | (Pos. 1-2-3-9-10-11-B 6-E 24-E 31) | | | | | |
| C 3+ | 9080.132 9 | tappo/plug | | 2 | 2 | 3 | 4 |
| C 4 | ex 1050.604 107 | B -> da/from s.No. 3368363 -> CT 320045 -> | | v | | | |
| | ex 1050.823 - - - | sostituito da/supersedes by -> CT D 054 -> | | v | | | |
| | ->=1050.853 107 | A ALBERO GOMITO COMPL./CRANKSHAFT ASS.Y | | 1 | | | |
| | | (Pos. 1-3-4-9-10-11-B 6-E 24-E 31) | | | | | |
| C 5+ | ex 2816.087 - - - - - | sostituito da/supersedes by - - - - -> | | v | v | v | |
| | -> 2816.088 105 | A corona/crown gear | | 1 | 1 | 1 | 1 |
| C 6 | ex 9880.689 - - - - - | npd -> da/from s.No. 3099838 -> CT 320004 ; | | | v | | |
| | | -> da/from s.No. 3101144 -> CT 330004 -> | | | | v | |
| | ex 9880.670 - - - - - | sostituito da/supersedes by - - - - -> | | v | v | v | |
| | ->=9880.690 105 | A VOLANO con CORONA/FLYWHEEL with CROWN | | 1 | 1 | 1 | 1 |
| | | (Pos. 5-6) | | | | | |
| C 7 | ex 1780.105 105 | B -> da/from s.No. 3099838 -> CT 320004 ; | | | v | | |
| | | -> da/from s.No. 3101144 -> CT 330004 -> | | | | v | |
| | -> 1780.097 107 | A bullone/bolt M 10 X 35 | | 5 | 5 | 5 | 5 |
| C 8 | ex 1790.079 107 | B -> da/from s.No. 3368363 -> CT 320045 ; | | v | | | |
| | | -> da/from s.No. 3383877 -> CT 320045 ; | | | v | | |
| | | -> da/from s.No. 3380282 -> CT 330039 ; | | | | v | |
| | | -> da/from s.No. 3377274 -> CT 340029 -> | | | | | v |
| | -> 9865.258 104 | A bullone/bolt M 16 X 1,5 Sin | | 1 | 1 | 1 | 1 |
| | | spina/pin | | 1 | 1 | 1 | 1 |
| C 9+ | 8400.120 104 | -> da/from s.No. 3368363 -> CT 320045 ; | | v | | | |
| C 10+ | ex | -> da/from s.No. 3383877 -> CT 320045 ; | | | v | | |
| | | -> da/from s.No. 3380282 -> CT 330039 -> | | | | v | |
| | -> 2280.145 107 | A chiavetta/key (mm 8) | | 1 | 1 | 1 | |
| | ex | -> da/from s.No. 3377274 -> CT 340029 -> | | | | | v |
| | -> 2280.146 115 | A chiavetta/key (mm 12) | | | | | 1 |
| C 11+ | ex | -> da/from s.No. 3368363 -> CT 320045 ; | | v | | | |
| | | -> da/from s.No. 3383877 -> CT 320045 ; | | | v | | |
| | | -> da/from s.No. 3380282 -> CT 330039 ; | | | | v | |
| | | -> da/from s.No. 3377274 -> CT 340029 -> | | | | | v |
| | -> 8430.004 9 | A spina/lockpin | | 1 | 1 | 1 | 1 |
| C 12 | ex 1050.606 106 | B -> da/from s.No. 3380282 -> CT 330039 -> | | | | v | |
| | ex 1050.825 - - - | sostituito da/supersedes by -> CT D 054 -> | | | | v | |
| | ->=1050.846 106 | A ALBERO GOMITO/CRANKSHAFT | | | | 1 | |
| | | (Pos. 1-3-9-10-11-12-B 6-E 13-E 31) | | | | | |
| C 13 | ex 1050.679 115 | B -> da/from s.No. 3377274 -> CT 340029 -> | | | | | v |
| | ex 1050.826 - - - | sostituito da/supersedes by -> CT D 054 -> | | | | | v |
| | >=1050.847 115 | A ALBERO GOMITO/CRANKSHAFT | | | | | 1 |
| | | (Pos. 1-3-9-10-11-13-B 6-E 13-E 31) | | | | | |
| Motore/Engine LDW FOCS 502 Versione/Version 727980 | | | | | | | |
| " " LDW FOCS 602 Versione/Version 727630 | | | | | | | |
| " " LDW FOCS 903 Versione/Version 727770 | | | | | | | |
| " " LDW FOCS 1204 Versione/Version 727620 | | | | | | | |
| LOMBARDINI MOTORI F.I.M. S.p.a. | | | | Edizione del/Issue of 10.1996 | | | |

| LDW 502 - 602 - 903 - 1204 FOCS vedi Tavola Ric./see Parts Table 1.5302.486 | | | | LDW 502 | LDW 602 | LDW 903 | LDW 1204 |
|--|---|--------------|-------|--|-------------|---------|-------------|
| Pos. | Matricola/Part No. | Note/Remarks | | | | | |
| D 1 | ex 4330.049 ->=6045.103 | 107 | I | sostituito da/superseded by - - - - -> GRUPPO BILANC./ROCKER ARM ASSEMBLY (Pos. 1-2-3-4-5-6-7-11-12-13-16) | v 1 | v 1 | |
| " | ex 4330.050 ->=6045.104 | 106 | I | sostituito da/superseded by - - - - -> GRUPPO BILANC./ROCKER ARM ASSEMBLY (Pos. 1-2-3-4-5-6-7-12-13-16-45) | | | v 1 |
| " | ex 4330.051 ->=6045.105 | 115 | I | sostituito da/superseded by - - - - -> GRUPPO BILANC./ROCKER ARM ASSEMBLY (Pos. 1-2-3-4-5-6-7-12-13-16-46) | | | v 1 |
| D 1+ | 1541.126 | 115 | | bilanc.com.asp.-sc.comp./rocker arm | 2 | 2 | 3 |
| D 2+ | 9850.088 | 107 | | vite registro bil.asp.-sc./adj.screw | 4 | 4 | 6 |
| D 3+ | 3240.008 | 9 | | dado/nut | 4 | 4 | 6 |
| D 4+ | 9850.110 | 107 | | vite reg. bil.pompa iniez./adj.screw | 2 | 2 | 3 |
| D 5+ | 3240.151 | 107 | | dado/nut | 2 | 2 | 3 |
| D 6+ | 1541.130 | 107 | | bil.com.pompa in.comp./inj.pump arm | 2 | 2 | 3 |
| D 7+ | 8615.105 | 107 | | supp. perno bil./rock.arm shaft supp. | 3 | 3 | 4 |
| D 8 | 7625.020 | 9 | | rondella/washer | 3 | 3 | 4 |
| D 9 | 3240.033 | 9 | | dado/nut | 3 | 3 | 4 |
| D 10 | 6800.088 | 107 | | prigioniero/stud | 3 | 3 | 4 |
| D 11+ | ex 6045.048 -> 6045.086 | 107 | npd A | -> da/from s.No. 3163065 -> CT 320011 -> perno bilanc./rocker arm shaft | v 1 | v 1 | |
| D 12+ | 8430.061 | 9 | | spina/pin | 1 | 1 | 1 |
| D 13+ | ex 9765.113 -> 9080.182 | 9 | B A | -> da/from s.No. 3163065 -> CT 320011 ; -> da/from s.No. 3162126 -> CT 330011 -> tappo/plug diam.10 | v 2 | v 2 | v 2 |
| D 15 | 1011.259 | 107 | | albero camme/camshaft | 1 | | |
| " | 1011.260 | 105 | | albero camme/camshaft | 1 | 1 | |
| D 16+ | 1541.126 | 115 | | bilanc.com.asp.-sc.comp./rocker arm | 2 | 2 | 3 |
| D 17 | 1970.140 | 107 | | bussola/sleeve | 1 | 1 | 1 |
| D 18 | 3580.018 | 107 | | eccentrico/cam | 1 | 1 | 1 |
| D 19 | 9730.294 | 107 | | vite/screw | 1 | 1 | 1 |
| D 20 | 1200.233 | 115 | | anello OR/rubber oil seal | 1 | 1 | 1 |
| D 21 | 3800.026 | 107 | | flangia/flange | 1 | 1 | 1 |
| D 22 | 9730.012 | 9 | | vite/screw M 6 X 1 X 20 | 3 | 3 | 3 |
| D 23 | 7090.012 | 107 | | puleggia com.distr./contr.gear pulley | 1 | 1 | 1 |
| D 24 | ex 2440.227 ex 2440.297 -> 2440.343 ex 2440.226 ex 2440.298 | 107 | B A | sostituito da/superseded by - - - - -> da/from s.No. 3742951 -> CT 320070 -> cinghia dentata/cog belt sostituito da/superseded by - - - - -> da/from s.No. 3742951 -> CT 320070 ; da/from s.No. 3742951 -> CT 330063 ; da/from s.No. 3747063 -> CT 340057 -> | v v 1 | | v v v |
| " | > 2440.330 | 107 | A | cinghia dentata/cog belt | | v | v |
| D 25+ | 1213.303 | 107 | | anello paraolio/seal ring | 1 | 1 | 1 |
| D 26 | 9730.010 | 9 | | vite/screw M 6 X 1 X 16 | 3 | 3 | 3 |
| D 27 | =2690.294 | 107 | | COPERCHIO REGOLATORE/GOVERNOR COVER (Pos. 25-27-28-29-30-31) | 1 | 1 | 1 |
| D 28+ | 1202.037 | 9 | | anello OR/rubber oil seal | 1 | 1 | 1 |
| D 29+ | 3001.066 | 107 | | cuscinetto/ball bearing | 1 | 1 | 1 |
| D 30+ | 6275.116 | 107 | | piastra/plate | 1 | 1 | 1 |
| D 31+ | 9800.061 | 9 | | vite/screw M 6 X 1 X 16 | 3 | 3 | 3 |
| D 32 | 8805.048 | 107 | | supporto masse regol./weight support | 1 | 1 | 1 |
| D 33 | ex 6495.037 | 107 | E B | -> fino a/until 3419706 -> CT 320051 ; -> fino a/until 3419671 -> CT 330045 ; -> fino a/until 3419719 -> CT 340036 . | v v | | v v |
| D 34 | ex 5401.081 ->=5401.205 | 107 | I | sostituito da/superseded by - - - - -> MANICOTTO REGOLATORE/CONTROL SLEEVE (Pos. 34-35) | v 1 | v 1 | v 1 |
| Motore/Engine LDW FOCS 502 | | | | Versione/Version 727980 | | | |
| " " LDW FOCS 602 | | | | Versione/Version 727630 | | | |
| " " LDW FOCS 903 | | | | Versione/Version 727770 | | | |
| " " LDW FOCS 1204 | | | | Versione/Version 727620 | | | |



LDW 502 - 602 - 903 - 1204 FOCS
vedi Tavola Ric./see Parts Table 1.5302.486

| Pos. | Matricola/Part No. | Note/Remarks | LDW 502 | LDW 602 | LDW 903 | LDW 1204 |
|---------------|--|--|---------|---------|---------|----------|
| D 35+ | 1565.085 107 | boccola/sleeve | 1 | 1 | 1 | 1 |
| D 36 | 3110.127 107 | cuscinetto reggispinta/thrust bearing | 1 | 1 | 1 | 1 |
| D 37 | ex 1257.047 107 B | -> fino a/until 3459241 -> CT 320059 ; -> fino a/until 3459243 -> CT 330053 ; -> fino a/until 3459240 -> CT 340045 . | v | v | v | v |
| D 38 | 9820.142 107 | vite/screw | 1 | 1 | 1 | 1 |
| D 39 | 7495.010 107 | rondella/washer | 1 | 1 | 1 | 1 |
| D 41 | 3240.033 9 | dado/nut | 1 | 1 | 1 | 1 |
| D 42 | 6800.090 107 | prigioniero/stud | 1 | 1 | 1 | 1 |
| D 43 | 7495.010 107 | rondella/washer | 1 | 1 | 1 | 1 |
| D 44 | 4110.009 107 | galoppino tendicinghia/jockey pulley | 1 | 1 | 1 | 1 |
| D 45 | ex 6045.054 - - npd -> da/from s.No. 3162126 -> CT 330011 -> -> 6045.088 106 A perno bilanc./rocker arm shaft | | | v | | |
| D 46 | ex 6045.084 - - - - - sostituito da/superseded by - - - - -> ->=6045.083 115 I PERNO BILANC./ROCKER ARM SHAFT (Pos. 12-13-46) | | | | v | |
| D 47 | 1011.262 106 | albero camme/camshaft | | | 1 | |
| D 48 | 1011.284 115 | albero camme/camshaft | | | | 1 |
| E 1 | ex 9040.014 - - - - - sostituito da/superseded by - - - - -> -> 8965.003 9 I tappo/plug | | v | v | v | v |
| E 2 | 4670.060 9 | guarnizione in rame/copper joint | 1 | 1 | 1 | 1 |
| E 3 | 1970.140 107 | bussola di riferimento/dowel | 2 | 2 | 2 | 2 |
| E 4 | ex 1510.492 - - npd -> da/from s.No. 3418153 -> CT 320053 -> ->=1510.626 107 A BASAMENTO COMPOSTO/CRANKCASE (Pos. 4-16-20-21-22-23-29) | | v | | | |
| E 4 | ex 1510.493 - - npd -> da/from s.No. 3418153 -> CT 320053 -> ->=1510.619 105 A BASAMENTO COMPOSTO/CRANKCASE (Pos. 4-16-20-21-22-23-29-30) | | | v | | |
| E 5 | 9730.009 9 | vite/screw M 6 X 1 X 12 | 6 | | | |
| E 6 | ex 2610.034 107 E B -> da/from s.No. 3377242 -> CT 320043 -> ->=2610.056 107 A COPERCHIO DECANTATORE/DECANTER COVER (Pos. 6-12) | | v | | | |
| E 7 | ex 3630.043 9 B -> fino a/until 3152012 -> CT 320017 . | | v | | | |
| E 8 | ex 9400.097 107 B -> fino a/until 3152012 -> CT 320017 . | | v | | | |
| E 9 | ex 3617.166 107 B -> fino a/until 3152012 -> CT 320017 . | | v | | | |
| E 10 | ex 6370.270 107 B -> da/from s.No. 3320046 -> CT 320039 -> | | v | | | |
| E 10 | ex 6370.267 106 B -> da/from s.No. 3324500 -> CT 320039 ; -> da/from s.No. 3319664 -> CT 330034 ; -> da/from s.No. 3316717 -> CT 340024 -> | | | v | | |
| E 10 | -> 6370.504 107 A piastra/plate 7 mm | | 1 | 1 | 1 | 1 |
| E 11 | ex 9731.030 9 B -> fino a/until 3152012 -> CT 320017 . | | v | | | |
| E 12+ | | vedi/see Pos. 5 | | | | |
| E 13 | 9730.010 9 | vite/screw M 6 X 1 X 16 | 6 | 6 | 6 | 6 |
| E 14 | ex 4431.135 107 B -> da/from s.No. 3377242 -> CT 320043 -> | | v | | | |
| E 14 | -> 4431.144 107 A guarnizione/gasket | | 1 | 1 | 1 | 1 |
| E 15 | 9765.113 9 | vite/screw M 12 | 1 | 1 | 1 | 1 |
| E 16+ | 8990.022 9 | tappo/plug | 4 | 4 | 6 | 8 |
| E 17 | ex 4501.038 - - npd -> da/from s.No. 3103239 -> CT 320008 ; -> da/from s.No. 3104274 -> CT 330008 -> | | v | v | v | v |
| E 17 | ex 4501.095 - - - - - sostituito da/superseded by - - - - -> -> 4501.100 107 I guarnizione/joint | | i | i | i | i |
| Motore/Engine | LDW FOCS 502 | Versione/Version 727980 | | | | |
| " | LDW FOCS 602 | Versione/Version 727630 | | | | |
| " | LDW FOCS 903 | Versione/Version 727770 | | | | |
| " | LDW FOCS 1204 | Versione/Version 727620 | | | | |



LDW 502-602-903 - 1204 FOCS
vedi Tavola Ric./see Parts Table 1.5302.486

| Pos. | Matricola/Part No. | Note/Remarks | LDW 502 | LDW 602 | LDW 903 | LDW 1204 |
|-------|---------------------|--|---------|---------|---------|----------|
| E 18 | ex 3790.060 107 E B | -> da/from s.No. 3535825 -> CT 320065 ; -> da/from s.No. 3543911 -> CT 330059 ; -> da/from s.No. 3535829 -> CT 340051 -> FLANGIA/FLANGE per motore con alternatore a volano for engine with alternator in flywh. (Pos. 18-19) | v | v | v | v |
| | ->=3790.078 107 I | | 1 | 1 | 1 | 1 |
| | =3790.079 107 I | | 1 | 1 | 1 | 1 |
| E 19+ | ex 1213.301 - - npd | -> da/from s.No. 3159448 -> CT 320012 ; -> da/from s.No. 3159445 -> CT 330012 ; -> da/from s.No. 3161629 -> CT 340003 -> -> da/from s.No. 3535825 -> CT 320065 ; -> da/from s.No. 3543911 -> CT 330059 ; -> da/from s.No. 3535829 -> CT 340051 -> | v | v | v | v |
| | ex 1213.339 - - npd | | v | v | v | v |
| | -> 1213.347 107 I | | 1 | 1 | 1 | 1 |
| E 20+ | 9820.120 107 | anello paraolio/seal ring | 4 | 6 | 8 | 10 |
| E 21+ | 1970.140 107 | vite fiss.supp./fixing support screw | 4 | 6 | 8 | 10 |
| E 22+ | | bussola di riferimento/dowel | 4 | 6 | 8 | 10 |
| E 23+ | | vedi/see Pos. 4 | | | | |
| E 24+ | 1257.081 107 | vedi/see Pos. 4 | | | | |
| | 1257.082 107 | anello reggisp./thrust washer std. | 2 | 2 | 2 | 2 |
| | 1257.083 107 | " " +0,10 | 2 | 2 | 2 | 2 |
| E 25 | 8400.108 107 | " " +0,20 | 2 | 2 | 2 | 2 |
| E 26 | ex 1770.127 9 B | spina/pin -> da/from s.No. 3320046 -> CT 320039 ; -> da/from s.No. 3324500 -> CT 320039 ; -> da/from s.No. 3319664 -> CT 330034 ; -> da/from s.No. 3316717 -> CT 340024 -> | v | v | v | v |
| | -> 1770.056 9 A | bullone/bolt M 8 X 1,25 X 18 | 9 | 9 | 9 | 9 |
| E 27 | ex 6429.206 - - npd | -> da/from s.No. 3092728 -> CT 320003 ; -> da/from s.No. 3318720 -> CT 330003 ; -> da/from s.No. 3093295 -> CT 330003 -> | v | v | v | v |
| | -> 6429.160 107 A | piede anteriore/front side eng.mount | 1 | 1 | 1 | 1 |
| E 28 | ex 9732.074 9 B | -> da/from s.No. 3092728 -> CT 320003 ; -> da/from s.No. 3318720 -> CT 330003 ; -> da/from s.No. 3093295 -> CT 330003 -> | v | v | v | v |
| | ex 1790.037 - - | modifica tecn./technic.improvement -> | v | v | v | v |
| | -> 1790.062 9 A | bullone/bolt M 12 X 1,75 X 25 | 2 | 2 | 2 | 2 |
| E 29+ | ex 4400.048 107 B | -> da/from s.No. 3171387 -> CT 320029 ; -> da/from s.No. 3181943 -> CT 320029 ; -> da/from s.No. 3174005 -> CT 330026 ; -> da/from s.No. 3175486 -> CT 340016 -> | v | v | v | v |
| | -> 4400.054 107 A | guarnizione/joint | 4 | 4 | 4 | 4 |
| E 30+ | | vedi/see Pos. 4 | | | | |
| E 31+ | ex 1611.138 - - npd | -> da/from s.No. 3535825 -> CT 320065 ; -> da/from s.No. 3543911 -> CT 330059 ; -> da/from s.No. 3535829 -> CT 340051 -> | v | v | v | v |
| | -> 1611.182 107 I | bronz. di banco/support bearing std. | 2 | 3 | 4 | 5 |
| | ex 1611.139 - - npd | -> da/from s.No. 3535825 -> CT 320065 ; -> da/from s.No. 3543911 -> CT 330059 ; -> da/from s.No. 3535829 -> CT 340051 -> | v | v | v | v |
| | -> 1611.183 107 I | bronz. di banco/support bearing -0,25 | 2 | 3 | 4 | 5 |
| | ex 1611.140 - - npd | -> da/from s.No. 3535825 -> CT 320065 ; -> da/from s.No. 3543911 -> CT 330059 ; -> da/from s.No. 3535829 -> CT 340051 -> | v | v | v | v |
| | -> 1611.184 107 I | bronz. di banco/support bearing -0,50 | 2 | 3 | 4 | 5 |
| E 32 | ex 6429.207 - - npd | -> da/from s.No. 3092728 -> CT 320003 ; -> da/from s.No. 3318720 -> CT 330003 ; -> da/from s.No. 3093295 -> CT -> | v | v | v | v |
| | ex 6429.161 - - - - | sostituito da/superseded by - - - -> | v | v | v | v |
| E 33 | -> 6429.250 107 A | piede posteriore/rear side eng.mount | 1 | 1 | 1 | 1 |
| | 7645.006 9 | rondella/washer | 2 | 2 | 2 | 2 |
| E 36 | 7645.007 9 | rondella/washer | 2 | 2 | 2 | 2 |

| | | |
|---------------|---------------|-------------------------|
| Motore/Engine | LDW FOCS 502 | Versione/Version 727980 |
| " | LDW FOCS 602 | Versione/Version 727630 |
| " | LDW FOCS 903 | Versione/Version 727770 |
| " | LDW FOCS 1204 | Versione/Version 727620 |

LOMBARDINI MOTORI F.I.M. S.p.a.

Edizione del/Issue of 10.1996

| LDW 502 - 602 - 903 - 1204 FOCS vedi Tavola Ric./see Parts Table 1.5302.486 | | | | LDW 502 | LDW 602 | LDW 903 | LDW 1204 |
|--|--|--|--|--|--|--|--|
| Pos. | Matricola/Part No. | Note/Remarks | | | | | |
| E 37 | 1770.004 9 | bullone/bolt M 8 X 1,25 X 20 | | 2 | 2 | 2 | |
| E 38 | ex 1510.494 - - npd ->=1510.620 106 A | -> da/from s.No. 3418160 -> CT 330047 -> BASAMENTO COMPOSTO/CRANKCASE (Pos. 16-20-21-22-23-29-30-38) | | | | v 1 | |
| E 39 | ex 1510.530 - - npd ->=1510.621 115 A | -> da/from s.No. 3418154 -> CT 340038 -> BASAMENTO COMPOSTO/CRANKCASE (Pos. 16-20-21-22-23-29-30-39) | | | | | v 1 |
| F 1 | ex 9375.631 - - npd ex 9375.848 - - npd ex 9375.873 107 B -> 9375.905 107 A | -> da/from s.No. 3485040 -> CT 320060 -> -> da/from s.No. 3530058 -> CT 320064 -> -> da/from s.No. 3717572 -> CT 320067 -> tubo mandata comb./delivery pipe | | v v v 1 | v v v 1 | | |
| F 2 | ex 9730.238 107 E B -> 9730.313 107 I | -> da/from s.No. 3530058 -> CT 320064 ; -> da/from s.No. 3522215 -> CT 330058 ; -> da/from s.No. 3528590 -> CT 340050 -> vite fiss.tubo/fuel pipe fix.screw | | v v 4 | v v 4 | v v 6 | v v 8 |
| F 3 | ex 4750.012 107 E ex 4750.013 107 B -> 4750.014 107 A | -> da/from s.No. 3485040 -> CT 320060 ; -> da/from s.No. 3485027 -> CT 330054 ; -> da/from s.No. 3481833 -> CT 340046 -> -> da/from s.No. 3717572 -> CT 320067 ; -> da/from s.No. 3717621 -> CT 330061 ; -> da/from s.No. 3717631 -> CT 340052 -> guarnizione tubi alim./del.pipe joint | | v v v v 1 | v v v v 1 | v v v v 1 | v v v v 1 |
| F 4 | ex 3203.047 - - - - -> 3240.164 9 I | - - - - sostituito da/superseded by, - - - - dado/nut | | 2 2 | 2 2 | 2 2 | 2 2 |
| F 5 | 7625.010 9 | rondella/washer | | 2 | 2 | 2 | 2 |
| F 6 | ex 6780.133 - - - - -> 6780.049 9 I | - - - - sostituito da/superseded by - - - - prigioniero/stud M 8 X 20 | | v 2 | v 2 | v 2 | v 2 |
| F 7 | ex 6585.068 - - npd -> 6585.080 107 A | -> da/from s.No. 3493030 -> CT 320062 ; -> da/from s.No. 3493016 -> CT 330056 ; -> da/from s.No. 3493009 -> CT 340048 -> pompa alimentazione/feed pump | | v 1 1 | v 1 1 | v 1 1 | v 1 1 |
| F 8 | 1200.087 9 | anello OR/O ring | | 1 | 1 | 1 | 1 |
| F 9 | ex 7200.111 - - npd -> 7200.168 107 A | -> da/from s.No. 3493030 -> CT 320062 ; -> da/from s.No. 3493016 -> CT 330056 ; -> da/from s.No. 3493009 -> CT 340048 -> puntalino/drive rod | | v 1 1 | v 1 1 | v 1 1 | v 1 1 |
| F 10 | ex 1200.052 9 E ex 1200.276 107 B -> 1200.286 107 A | -> da/from s.No. 3290190 -> CT 320044 ; -> da/from s.No. 3311906 -> CT 320044 ; -> da/from s.No. 3311884 -> CT 330037 ; -> da/from s.No. 3312509 -> CT 340028 -> -> da/from s.No. 3717572 -> CT 320067 ; -> da/from s.No. 3717621 -> CT 330061 ; -> da/from s.No. 3717631 -> CT 340052 -> anello ten. 9,25 X 1,78/seal ring | | v v v v 4 4 4 4 2 v | v v v v 4 4 4 4 2 v | v v v v 6 6 6 6 3 v | v v v v 8 8 8 8 4 v |
| F 11 | 3240.018 9 | dado/nut | | 4 | 4 | 6 | 8 |
| F 12 | 6780.135 107 | prigioniero/stud | | 4 | 4 | 6 | 8 |
| F 13 | 7555.029 9 | rondella/washer | | 4 | 4 | 6 | 8 |
| F 14 | 1410.112 107 | punteria/tapped | | 2 | 2 | 3 | 4 |
| F 15 | ex 9865.213 107 B | -> fino a/until 3717572 -> CT 320067 ; -> fino a/until 3717620 -> CT 330061 ; -> fino a/until 3717630 -> CT 340052 . | | v v v | v v v | v v v | v v v |
| Motore/Engine LDW FOCS 502 Versione/Version 727980 | | | | | | | |
| " " LDW FOCS 602 Versione/Version 727630 | | | | | | | |
| " " LDW FOCS 903 Versione/Version 727770 | | | | | | | |
| " " LDW FOCS 1204 Versione/Version 727620 | | | | | | | |



LDW 502 - 602 - 903 - 1204 FOCS
vedi Tavola Ric./see Parts Table 1.5302.486

| Pos. | Matricola/Part No. | Note/Remarks | LDW 502 | LDW 602 | LDW 903 | LDW 1204 |
|------|---------------------|--|---------|---------|---------|----------|
| F 16 | ex 9680.027 - - npd | -> da/from s.No. 3290190 -> CT 320044 ; -> da/from s.No. 3311906 -> CT 320044 ; | v | v | | |
| | ex 9680.031 - - npd | -> da/from s.No. 3312509 -> CT 340028 -> -> da/from s.No. 3404218 -> CT 320052 ; -> da/from s.No. 3404358 -> CT 330046 ; | v | v | | v |
| | ex 9680.032 - - npd | -> da/from s.No. 3404401 -> CT 340037 -> -> da/from s.No. 3717572 -> CT 320067 ; -> da/from s.No. 3717621 -> CT 330061 ; -> da/from s.No. 3717631 -> CT 340052 ; | v | v | v | v |
| | -> 9680.037 107 A | valvola rifiuto/bleeding valve | | | v | v |
| F 17 | 5801.274 107 | molla per valvola di mandata/spring | 2 | 2 | 3 | 4 |
| F 18 | ex 9672.066 107 B | -> da/from s.No. 3159084 -> CT 320019 ; -> da/from s.No. 3158224 -> CT 330016 -> | v | v | v | v |
| | ex 9672.081 107 B | -> da/from s.No. 3290190 -> CT 320044 ; -> da/from s.No. 3311906 -> CT 320044 ; -> da/from s.No. 3311884 -> CT 330037 ; -> da/from s.No. 3312509 -> CT 340028 -> | v | v | v | v |
| | -> 9672.107 107 A | valvola di mandata/delivery valve | | | v | v |
| F 19 | ex 1201.086 9 B | -> fino a/until 3159083 -> CT 320019 ; -> fino a/until 3158223 -> CT 330016 ; | 2 | 2 | 3 | 4 |
| F 20 | ex 6578.176 107 B | -> fino a/until 3180376 -> CT 340007 ; -> da/from s.No. 3159084 -> CT 320019 ; -> da/from s.No. 3158224 -> CT 330016 ; | v | v | v | v |
| | ex 6578.187 107 B | -> da/from s.No. 3180377 -> CT 340007 -> -> da/from s.No. 3290190 -> CT 320044 ; -> da/from s.No. 3311906 -> CT 320044 ; -> da/from s.No. 3311884 -> CT 330037 ; | v | | v | v |
| | ex 6578.203 - - npd | -> da/from s.No. 3312509 -> CT 340028 -> -> da/from s.No. 3404218 -> CT 320052 ; -> da/from s.No. 3404358 -> CT 330046 ; | v | v | v | v |
| | ex 6578.204 107 B | -> da/from s.No. 3404401 -> CT 340037 -> -> da/from s.No. 3507300 -> CT 320061 ; -> da/from s.No. 3507450 -> CT 330055 ; -> da/from s.No. 3507255 -> CT 340047 -> | v | v | v | v |
| | -> 6578.211 107 A | pompante/plunger | | | v | v |
| F 21 | ex 4130.086 107 B | -> fino a/until 3717571 -> CT 320067 ; -> fino a/until 3717620 -> CT 330061 ; -> fino a/until 3717630 -> CT 340052 ; | 2 | 2 | 3 | 4 |
| F 22 | ex 8900.182 107 B | -> da/from s.No. 3159084 -> CT 320019 ; -> da/from s.No. 3158224 -> CT 330016 ; | v | v | v | v |
| | ex 8900.384 107 B | -> da/from s.No. 3180377 -> CT 340007 -> -> fino a/until 3717571 -> CT 320067 ; -> fino a/until 3717620 -> CT 330061 ; -> fino a/until 3717630 -> CT 340052 ; | v | v | v | v |
| F 23 | 5755.113 107 | molla punteria/spring | | | v | v |
| F 24 | ex 7215.094 107 B | -> da/from s.No. 3159084 -> CT 320019 ; -> da/from s.No. 3158224 -> CT 330016 ; -> da/from s.No. 3180377 -> CT 340007 -> | 2 | 2 | 3 | 4 |
| | -> 7215.101 107 A | punteria/push-rod | 2 | 2 | 3 | 4 |

| | | |
|---------------|---------------|-------------------------|
| Motore/Engine | LDW FOCS 502 | Versione/Version 727980 |
| " | LDW FOCS 602 | Versione/Version 727630 |
| " | LDW FOCS 903 | Versione/Version 727770 |
| " | LDW FOCS 1204 | Versione/Version 727620 |

LOMBARDINI MOTORI F.I.M. S.p.a. Edizione del/Issue of 10.1996

| LDW 502 - 602 - 903 - 1204 FOCS vedi Tavola Ric./see Parts Table 1.5302.486 | | | | LDW 502 | LDW 602 | LDW 903 | LDW 1204 |
|--|--------------------|--------------|---|-------------------------------|---------|---------|----------|
| Pos. | Matricola/Part No. | Note/Remarks | | LDW 502 | LDW 602 | LDW 903 | LDW 1204 |
| F 25 | ex 6590.202 | - - npd | -> da/from s.No. 3159084 -> CT 320019 ; -> da/from s.No. 3158224 -> CT 330016 ; -> da/from s.No. 3180377 -> CT 340007 -> | v | v | v | |
| | ex 6590.231 | - - npd | -> da/from s.No. 3181705 -> CT 330018 -> | | | v | v |
| | ex 6590.236 | - - npd | -> da/from s.No. 3290190 -> CT 320044 ; -> da/from s.No. 3311906 -> CT 320044 ; -> da/from s.No. 3311884 -> CT 330037 ; -> da/from s.No. 3312509 -> CT 340028 -> | v | v | v | v |
| | ex 6590.260 | - - npd | -> da/from s.No. 3404218 -> CT 320052 ; -> da/from s.No. 3404358 -> CT 330046 ; -> da/from s.No. 3404401 -> CT 340037 -> | v | v | v | v |
| | ex 6590.262 | - - npd | -> da/from s.No. 3507300 -> CT 320061 ; -> da/from s.No. 3507450 -> CT 330055 ; -> da/from s.No. 3507255 -> CT 340047 -> | v | v | v | v |
| | ex 6590.272 | 107 B | -> da/from s.No. 3717572 -> CT 320067 ; -> da/from s.No. 3717621 -> CT 330061 ; -> da/from s.No. 3717631 -> CT 340052 -> | v | v | v | v |
| | -> 6590.285 | 107 A | pompa-iniettore/nozzle-injection pump | 2 | 2 | 3 | 4 |
| F 26 | ex 2871.068 | 107 B | -> da/from s.No. 3159084 -> CT 320019 ; -> da/from s.No. 3158224 -> CT 330016 ; -> da/from s.No. 3180377 -> CT 340007 -> | v | v | v | v |
| | ex 2871.110 | - - npd | -> da/from s.No. 3404218 -> CT 320052 ; -> da/from s.No. 3404358 -> CT 330046 ; -> da/from s.No. 3404401 -> CT 340037 -> | v | v | v | v |
| | ex 2871.126 | 107 B | -> fino a/until 3717571 -> CT 320067 ; -> fino a/until 3717620 -> CT 330061 ; -> fino a/until 3717630 -> CT 340052 . | v | v | v | v |
| F 27 | ex 8335.142-> | - - - | non più disp./no more available - - - | v | v | v | v |
| " | 8335.143 | 107 | spessore di taratura/adj.spacer 1,90 | 2 | 2 | 3 | 4 |
| " | 8335.144 | 107 | spessore di taratura/adj.spacer 1,80 | - | - | - | - |
| " | 8335.145 | 107 | spessore di taratura/adj.spacer 1,70 | - | - | - | - |
| " | 8335.146 | 107 | spessore di taratura/adj.spacer 1,60 | - | - | - | - |
| " | 8335.147 | 107 | spessore di taratura/adj.spacer 1,50 | - | - | - | - |
| " | 8335.148 | 107 | spessore di taratura/adj.spacer 1,40 | - | - | - | - |
| " | 8335.149 | 107 | spessore di taratura/adj.spacer 1,30 | - | - | - | - |
| " | 8335.150 | 107 | spessore di taratura/adj.spacer 1,20 | - | - | - | - |
| " | 8335.151 | 107 | spessore di taratura/adj.spacer 1,10 | - | - | - | - |
| " | 8335.152 | 107 | spessore di taratura/adj.spacer 1,00 | - | - | - | - |
| F 28 | 5625.011 | 107 | molla di pressione/pression spring | 2 | 2 | 3 | 4 |
| F 29 | 1420.048 | 107 | asta di comando/drive rod | 2 | 2 | 3 | 4 |
| F 30 | 3527.220 | 107 | distanziale/spacer | 2 | 2 | 3 | 4 |
| F 31 | 7470.007 | 107 | riempitore/filler | 2 | 2 | 3 | 4 |
| F 32 | 4760.015 | 271 | guarnizione valvola/valve gasket | 2 | 2 | 3 | 4 |
| F 33 | ex 1301.243 | 107 B | -> fino a/until 3159083 -> CT 320019 ; -> fino a/until 3158223 -> CT 330016 ; -> fino a/until 3180376 -> CT 340007 . | v | v | v | v |
| F 34 | ex 8461.062 | 107 B | -> fino a/until 3159083 -> CT 320019 ; -> fino a/until 3158223 -> CT 330016 ; -> fino a/until 3180376 -> CT 340007 . | v | v | v | v |
| F 35 | ex 1200.043 | 9 B | -> da/from s.No. 3290190 -> CT 320044 ; -> da/from s.No. 3311906 -> CT 320044 ; -> da/from s.No. 3311884 -> CT 330037 ; -> da/from s.No. 3312509 -> CT 340028 -> | v | v | v | v |
| | -> 1200.277 | 107 A | anello ten.20,35 X 1,78/seal ring | 2 | 2 | 3 | 4 |
| F 36 | 5375.017 | 107 | manicotto di regolazione/shim | 2 | 2 | 3 | 4 |
| F 37 | 9730.206 | 107 | vite/screw TCEI M 4 X 12 | 8 | 8 | 12 | 16 |
| F 38 | 6410.096 | 107 | piattello inferiore/lower retainer | 2 | 2 | 3 | 4 |
| F 39 | 1241.009 | 9 | anello elastico diam.19/circlip | 2 | 2 | 3 | 4 |
| F 40 | 5989.007 | 107 | parafiamma/spark arrestor | 2 | 2 | 3 | 4 |
| F 41 | 1200.213 | 107 | anello OR 26,70 X 1,78/O ring | 2 | 2 | 3 | 4 |
| Motore/Engine LDW FOCS 502 Versione/Version 727980 | | | | | | | |
| " " LDW FOCS 602 Versione/Version 727630 | | | | | | | |
| " " LDW FOCS 903 Versione/Version 727770 | | | | | | | |
| " " LDW FOCS 1204 Versione/Version 727620 | | | | | | | |
| LOMBARDINI MOTORI F.I.M. S.p.a. | | | | Edizione del/Issue of 10.1996 | | | |

| LDW 502 - 602 - 903 - 1204 FOCS vedi Tavola Ric./see Parts Table 1.5302.486 | | | | LDW 502 | LDW 602 | LDW 903 | LDW 1204 |
|--|---------------------|---|--|---------|---------|---------|----------|
| Pos. | Matricola/Part No. | Note/Remarks | | | | | |
| F 42 | ex 4130.097 107 B | -> da/from s.No. 3290190 -> CT 320044 ; -> da/from s.No. 3311906 -> CT 320044 ; -> da/from s.No. 3311884 -> CT 330037 ; -> da/from s.No. 3312509 -> CT 340028 -> | | v | v | v | v |
| | ex 4130.112 107 B | -> fino a/until 3717571 -> CT 320067 ; -> fino a/until 3717620 -> CT 330061 ; -> fino a/until 3717630 -> CT 340052 . | | v | v | v | v |
| F 43 | ex 6531.293 107 B | -> da/from s.No. 3507300 -> CT 320061 ; -> da/from s.No. 3507450 -> CT 330055 ; -> da/from s.No. 3507255 -> CT 340047 . | | v | v | v | v |
| | -> 6531.436 107 A | polverizzatore/nozzle | | 2 | 2 | 3 | 4 |
| F 44 | 1901.030 9 | bullone raccordo/union bolt M 10 | | 2 | 2 | 2 | 2 |
| F 45 | 4670.059 9 | guarnizione in rame/copper gasket | | 2 | 2 | 2 | 2 |
| F 46 | 4670.059 9 | guarnizione in rame/copper gasket | | 2 | 2 | 2 | 2 |
| F 47 | 1901.030 9 | bullone raccordo/union bolt M 10 | | 1 | 1 | 1 | 1 |
| F 48 | 1570.045 107 | bocchettone/filler cap M 14 | | 1 | 1 | 1 | 1 |
| F 49 | 3587.119 107 | elettrovalvola/electrovalve | | 1 | 1 | 1 | 1 |
| F 50 | 3630.050 9 | fascetta/clamp | | 1 | 1 | 1 | 1 |
| F 51 | =3730.073 107 | FILTRO COMBUSTIBILE/FUEL FILTER (Pos. 51-56) | | 1 | 1 | 1 | 1 |
| F 52 | 4670.059 9 | guarnizione rame/copper gasket | | 2 | 2 | 2 | 2 |
| F 53 | 4670.061 9 | guarnizione rame/copper gasket | | 2 | 2 | 2 | 2 |
| F 54 | ex 9375.676 - - npd | -> da/from s.No. 3485040 -> CT 320060 ; -> da/from s.No. 3485027 -> CT 330054 -> | | v | v | v | v |
| | > 9375.852 107 A | tubo mandata/delivery pipe | | 1 | 1 | 1 | 1 |
| F 55 | ex 9375.678 - - - - | - - - - sostituito da/superseded by - - - - -> | | v | v | v | v |
| | -> 9375.853 107 I | tubo combustibile/fuel pipe | | 1 | 1 | 1 | 1 |
| F 56+ | 2175.045 2830 | cartuccia comb./fuel filter element | | 1 | 1 | 1 | 1 |
| F 57 | 4670.082 107 | guarnizione in rame/copper joint | | 2 | 2 | 3 | 4 |
| F 58 | ex | -> da/from s.No. 3159084 -> CT 320019 ; -> da/from s.No. 3158224 -> CT 330016 ; -> da/from s.No. 3180377 -> CT 340007 -> | | v | v | v | v |
| | ex 8461.096 - - npd | - fino a/until 3717571 -> CT 320067 ; -> fino a/until 3717620 -> CT 330061 ; -> fino a/until 3717630 -> CT 340052 . | | v | v | v | v |
| F 59 | ex | -> da/from s.No. 3159084 -> CT 320019 ; -> da/from s.No. 3158224 -> CT 330016 ; -> da/from s.No. 3180377 -> CT 340007 -> | | v | v | v | v |
| | ex 8430.093 107 B | -> fino a/until 3717571 -> CT 320067 ; -> fino a/until 3717620 -> CT 330061 ; -> fino a/until 3717630 -> CT 340052 . | | v | v | v | v |
| F 60 | 4670.061 9 | guarnizione rame/copper gasket | | 2 | 2 | 2 | 2 |
| F 61 | 1901.032 9 | bullone raccordo/union bolt M 14 | | 1 | 1 | 1 | 1 |
| F 62 | ex | -> da/from s.No. 3717572 -> CT 320067 ; -> da/from s.No. 3717621 -> CT 330061 ; -> da/from s.No. 3717631 -> CT 340052 -> | | v | v | v | v |
| | > 1200.287 107 A | anello OR/O ring 25,12 X 1,78 | | 2 | 2 | 3 | 4 |
| F 63 | ex | -> da/from s.No. 3717572 -> CT 320067 ; -> da/from s.No. 3717621 -> CT 330061 ; -> da/from s.No. 3717631 -> CT 340052 -> | | v | v | v | v |
| | -> 4760.036 107 A | guarnizione/gasket | | 2 | 2 | 3 | 4 |
| F 64 | ex 9375.632 - - npd | -> da/from s.No. 3485027 -> CT 330054 -> | | v | v | v | v |
| | ex 9375.849 - - npd | -> da/from s.No. 3522215 -> CT 330058 -> | | v | v | v | v |
| | ex 9375.874 106 B | -> da/from s.No. 3717621 -> CT 330061 -> | | v | v | v | v |
| | -> 9375.906 106 A | tubo mandata comb./delivery pipe | | 1 | 1 | 1 | 1 |
| F 65 | ex 9375.633 - - npd | -> da/from s.No. 3481833 -> CT 340046 -> | | v | v | v | v |
| | ex 9375.850 - - npd | -> da/from s.No. 3528590 -> CT 340050 -> | | v | v | v | v |
| | ex 9375.875 115 B | -> da/from s.No. 3717631 -> CT 340052 -> | | v | v | v | v |
| | -> 9375.901 115 A | tubo mandata comb./delivery pipe | | 1 | 1 | 1 | 1 |
| Motore/Engine LDW FOCS 502 Versione/Version 727980 | | | | | | | |
| " " LDW FOCS 602 Versione/Version 727630 | | | | | | | |
| " " LDW FOCS 903 Versione/Version 727770 | | | | | | | |
| " " LDW FOCS 1204 Versione/Version 727620 | | | | | | | |

| LDW 502 - 602 - 903 - 1204 FOCS vedi Tavola Ric./see Parts Table 1.5302.486 | | | | LDW 502 | LDW 602 | LDW 903 | LDW 1204 |
|--|-----------------------|--|--|-------------------------------|---------|---------|----------|
| Pos. | Matricola/Part No. | Note/Remarks | | | | | |
| G 1 | 9730.015 9 | vite/screw M 6 X 1 X 30 | | 1 | 1 | 1 | 1 |
| G 2 | ex 6927.197 - - npd | -> da/from s.No. 3410140 -> CT 320056 -> | | v | | | |
| | -> 6927.322 107 I | protezione/pulley guard | | 1 | | | |
| | ex 6927.198 - - npd | -> da/from s.No. 3410140 -> CT 320056 ; | | | v | | |
| | | -> da/from s.No. 3410148 -> CT 330050 ; | | | | v | |
| | | -> da/from s.No. 3410287 -> CT 340041 -> | | | | | v |
| | -> 6927.323 105 I | protezione/pulley guard | | | | 1 | 1 |
| G 3 | 2400.107 107 | cinghia/belt mm 778 | | 1 | | | |
| | ex 2400.108 105 B | -> da/from s.No. 3163575 -> CT 320016 -> | | | v | | |
| | ex 2440.045 - - npd | -> da/from s.No. 3190988 -> CT 320020 -> | | | v | | |
| | -> 2440.308 360 I | cinghia/belt mm 850 | | | 1 | | |
| | ex 2440.045 - - npd | -> da/from s.No. 3192037 -> CT 330019 ; | | | | v | |
| | | -> da/from s.No. 3191461 -> CT 340008 -> | | | | | v |
| | ex 2440.308 360 B | -> da/from s.No. 3238056 -> CT 330027 ; | | | | v | |
| | | -> da/from s.No. 3239563 -> CT 340019 -> | | | | | v |
| | -> 2400.108 105 A | cinghia/belt mm 825 | | | | 1 | 1 |
| G 4 | 7590.007 107 | rondella/washer | | 1 | 1 | 1 | 1 |
| G 5+ | 1240.039 9 | anello seeger/snap ring | | 1 | 1 | 1 | 1 |
| G 6+ | 3002.032 9 | cuscinetto/ball bearing | | 1 | 1 | 1 | 1 |
| G 7+ | 3466.046 107 | distanziale/spacer | | 1 | 1 | 1 | 1 |
| G 8+ | 3002.032 9 | cuscinetto/ball bearing | | 1 | 1 | 1 | 1 |
| G 9+ | 1240.039 9 | anello seeger/snap ring | | 1 | 1 | 1 | 1 |
| G 10 | 9730.031 9 | vite/screw M 8 X 1,25 X 40 | | 3 | 3 | 3 | 3 |
| G 11+ | ex 6205.015 - - - - - | sostituito da/superseded by - - - - -> | | v | v | v | v |
| | -> 6205.028 107 I | perno ventilatore/fan shaft | | 1 | 1 | 1 | 1 |
| G 12 | 8850.031 107 | supporto ventilatore/fan support | | 1 | 1 | 1 | 1 |
| G 13 | 1770.022 9 | bullone/bolt M 8 X 1,25 X 90 | | 1 | 1 | 1 | 1 |
| G 14 | 7515.006 107 | rondella/washer | | 1 | 1 | 1 | 1 |
| G 15 | ex 7051.091 - - - - - | sostituito da/superseded by - - - - -> | | v | v | v | v |
| | ex 7051.138 - - - - - | sostituito da/superseded by - - - - -> | | v | v | v | v |
| | ->=7051.165 107 I | PULEGGIA COMPLETA/PULLEY ASS.Y (Pos. 5-6-7-8-9-11-15) | | 1 | 1 | 1 | 1 |
| G 16 | 9730.016 9 | vite/screw M 6 X 1 X 35 | | 2 | 2 | 2 | 2 |
| G 17 | 4501.074 107 | guarnizione/gasket | | 1 | 1 | 1 | 1 |
| G 18 | ex 6584.082 - - npd | -> da/from s.No. 3175065 -> CT 320018 ; | | v | v | | |
| | | -> da/from s.No. 3175064 -> CT 330017 -> | | | | v | |
| | ex 6584.311 - - npd | -> da/from s.No. 3742951 -> CT 320070 ; | | v | v | | |
| | | -> da/from s.No. 3742951 -> CT 330063 -> | | | | v | |
| | ->=6584.438 107 A | POMPA ACQUA COMPLETA/WATER PUMP | | 1 | 1 | 1 | |
| | ex 6584.082 - - npd | -> da/from s.No. 3175066 -> CT 340006 ; | | | | | v |
| | ex 6584.311 - - npd | -> da/from s.No. 3398339 -> CT 340033 ; | | | | | v |
| | ex 6584.393 115 B | -> da/from s.No. 3747063 -> CT 340057 -> | | | | | 1 |
| | -> 6584.439 115 A | POMPA ACQUA COMPLETA/WATER PUMP (Pos. 18-20-21-22-41) | | | | | 1 |
| G 19 | 4580.083 107 | guarn.corpo pompa/pump body joint | | 1 | 1 | 1 | 1 |
| G 20+ | | vedi/see Pos. 18 | | | | | |
| G 21+ | | vedi/see Pos. 18 | | | | | |
| G 22+ | ex 7090.013 - - npd | -> da/from s.No. 3175065 -> CT 320018 ; | | v | v | | |
| | | -> da/from s.No. 3175064 -> CT 330017 ; | | | | v | |
| | | -> da/from s.No. 3175066 -> CT 340006 -> | | | | | v |
| | ex 7085.014 107 B | -> da/from s.No. 3742951 -> CT 320070 ; | | v | v | | |
| | | -> da/from s.No. 3742951 -> CT 330063 ; | | | | v | |
| | | -> da/from s.No. 3747063 -> CT 340057 -> | | | | | v |
| | ex 7085.015 - - - - - | sostituito da/superseded by - - - - -> | | v | v | v | v |
| | -> | vedi/see Pos. 18 | | 1 | 1 | 1 | 1 |
| G 23 | 3866.046 107 | flangia/flange | | 2 | 2 | 2 | 2 |
| G 24 | 9732.063 9 | vite/screw M 8 X 1,25 X 35 | | 2 | 2 | 2 | 2 |
| Motore/Engine LDW FOCS 502 Versione/Version 727980 | | | | | | | |
| LDW FOCS 602 Versione/Version 727620 | | | | | | | |
| LDW FOCS 903 Versione/Version 727770 | | | | | | | |
| LDW FOCS 1204 Versione/Version 727620 | | | | | | | |
| LOMBARDINI MOTORI F.I.M. S.p.a. | | | | Edizione del/Issue of 10.1996 | | | |



LDW 502 - 602 - 903 - 1204 FOCS
vedi Tavola Ric./see Parts Table 1.5302.486

| Pos. | Matricola/Part No. | Note/Remarks | LDW 502 | LDW 602 | LDW 903 | LDW 1204 |
|--|-----------------------|---|---------|---------|---------|----------|
| G 25 | ex 1240.020 9 B | -> fino a/until 3175064 -> CT 320018 ; -> fino a/until 3175063 -> CT 330017 ; -> fino a/until 3175065 -> CT 340006 . | v | v | v | v |
| G 26 | 9865.174 107 | vite/screw | 2 | 2 | 2 | 2 |
| G 27 | 9732.016 9 | vite/screw M 6 X 1 X 40 | 4 | 4 | 4 | 4 |
| G 28 | 3810.066 107 | flangia/intermediate flange | 1 | 1 | | |
| " | ex 3810.065 106 B | -> da/from s.No. 3238056 -> CT 330027 ; -> da/from s.No. 3316717 -> CT 340027 -> | | | v | v |
| " | -> 3810.037 106 A | flangia/intermediate flange | | | 1 | 1 |
| G 29+ | 2750.279 107 | coperchio/thermostat cover | 1 | 1 | 1 | 1 |
| G 30+ | 1200.091 9 | anello OR/O ring | 1 | 1 | 1 | 1 |
| G 31+ | ex 9195.044 - - - - - | sostituito da/superseded by - - - - -> | v | v | v | v |
| " | ex 9195.070 - - - - - | sostituito da/superseded by - - - - -> | v | v | v | v |
| " | -> 9195.057 115 I | valvola termostatica/thermost.valve | 1 | 1 | 1 | 1 |
| G 32 | ex 9195.063 - - npd | -> da/from s.No. 3429337 -> CT 320050 ; -> da/from s.No. 3429410 -> CT 330044 ; -> da/from s.No. 3429511 -> CT 340035 -> | v | v | v | v |
| " | ex 9195.071 - - npd | -> da/from s.No. 3429337 -> CT 320050 ; -> da/from s.No. 3429410 -> CT 330044 ; -> da/from s.No. 3429511 -> CT 340035 -> | v | v | v | v |
| " | ex 4896.207 - - - - - | sostituito da/superseded by - - - - -> | v | v | v | v |
| " | ->=4896.208 I | TERMOSTATO COMPL./THERMOSTAT ASS.Y (Pos. 29-30-31-32-33-44-45) | 1 | 1 | 1 | 1 |
| G 33+ | 9732.074 9 | vite/screw M 8 X 1,25 X 20 | 2 | 2 | 2 | 2 |
| G 34 | 9730.012 9 | vite/screw M 6 X 1 X 20 | 4 | 4 | | |
| " | ex 9732.064 9 B | -> da/from s.No. 3238056 -> CT 330027 ; -> da/from s.No. 3316717 -> CT 340027 -> | | | v | v |
| " | -> 9730.110 9 A | vite/screw M 6 X 1 X 60 | | | 4 | 4 |
| G 35 | 6275.145 107 | piastrina/plate | 1 | 1 | | |
| " | ex 6275.144 106 B | -> da/from s.No. 3238056 -> CT 330027 ; -> da/from s.No. 3316717 -> CT 340027 -> | | | v | v |
| " | -> 6275.147 106 A | piastrina/plate | | | 1 | 1 |
| G 36 | ex 9718.204 - - npd | -> da/from s.No. 3171397 -> CT 320015 ; -> da/from s.No. 3163575 -> CT 320016 -> | v | v | | |
| " | -> 9718.235 107 A | ventola aspir./suction fan diam.280 | 1 | 1 | | |
| " | 9718.244 107 | ventola soffian./blower fan diam.280 | 1 | 1 | | |
| " | ex 9718.206 106 B | -> da/from s.No. 3238056 -> CT 330027 -> | | | v | v |
| " | -> 9718.237 106 A | ventola aspir./suction fan diam.310 | | | 1 | 1 |
| " | ex 9718.206 106 B | -> da/from s.No. 3175486 -> CT 340005 -> | | | | v |
| " | ex 9718.242 115 B | -> da/from s.No. 3316717 -> CT 340027 -> | | | | v |
| " | -> 9718.251 115 A | ventola aspir./blower fan diam.350 | | | | 1 |
| G 37 | 9730.016 9 | vite/screw M 6 X 1 X 35 | 4 | 4 | 4 | 4 |
| G 38 | ex 9732.074 9 B | -> da/from s.No. 3368363 -> CT 320045 ; -> da/from s.No. 3383877 -> CT 320045 ; -> da/from s.No. 3380282 -> CT 330039 ; -> da/from s.No. 3377274 -> CT 340029 -> | v | v | v | v |
| " | -> 9732.016 9 A | vite/screw M 6 X 1 X 40 | 4 | 4 | 4 | 4 |
| G 39 | ex 7051.089 107 B | -> da/from s.No. 3368363 -> CT 320045 -> | v | v | v | v |
| " | -> 7051.144 107 A | puleggia vent.alt./blower driv.pulley | 1 | | | |
| " | ex 7051.089 107 B | -> da/from s.No. 3163575 -> CT 320016 -> | | | v | v |
| " | ex 7051.087 - - - - - | sostituito da/superseded by - - - - -> | | | v | v |
| " | ex 7051.135 107 B | -> da/from s.No. 3383877 -> CT 320045 -> | | | v | v |
| " | -> 7051.143 107 A | puleggia vent.alt./blower driv.pulley | 1 | | | |
| " | ex 7051.087 - - npd | -> da/from s.No. 3238056 -> CT 330027 ; -> da/from s.No. 3239563 -> CT 340019 -> | | | v | v |
| " | ex 7051.089 107 B | -> da/from s.No. 3380282 -> CT 330039 ; -> da/from s.No. 3377274 -> CT 340029 -> | | | v | v |
| " | -> 7051.144 107 A | puleggia vent.alt./blower driv.pulley | | | 1 | 1 |
| G 40 | ex 1240.020 9 R | -> fino a/until 3175064 -> CT 320018 ; -> fino a/until 3175063 -> CT 330017 . | v | v | v | v |
| Motore/Engine LDW FOCS 502 Versione/Version 727980 | | | | | | |
| " " LDW FOCS 602 Versione/Version 727630 | | | | | | |
| " " LDW FOCS 903 Versione/Version 727770 | | | | | | |
| " " LDW FOCS 1204 Versione/Version 727620 | | | | | | |

| LDW 502 - 602 - 903 - 1204 FOCS vedi Tavola Ric./see Parts Table 1.5302.486 | | | | LDW 502 | LDW 602 | LDW 903 | LDW 1204 |
|--|--------------------|--------------|---|-------------------------------|---------|---------|----------|
| Pos. | Matricola/Part No. | Note/Remarks | | LDW 502 | LDW 602 | LDW 903 | LDW 1204 |
| G 41+ | | 9 | vedi/see Pos. 18 | 2 | 2 | 2 | 2 |
| G 42 | 9730.024 | | vite/screw M 8 X 1,25 X 16 | | | | |
| G 43 | ex 4460.035 | - - npd | - fino a/until 3282407 -> CT 320038 ; -> fino a/until 3282402 -> CT 320038 ; -> fino a/until 3282411 -> CT 330033 ; -> fino a/until 3283185 -> CT 340023 . | v | v | v | v |
| G 44+ | ex 4670.061 | 9 B | -> da/from s.No. 3429337 -> CT 320050 ; -> da/from s.No. 3429410 -> CT 330044 ; -> da/from s.No. 3429511 -> CT 340035 -> | v | v | v | v |
| | -> 4670.019 | 9 A | guarniz.rame/copper gasket d 16 | 1 | 1 | 1 | 1 |
| G 45+ | ex 9195.030 | 565 B | -> da/from s.No. 3429337 -> CT 320050 ; -> da/from s.No. 3429410 -> CT 330044 ; -> da/from s.No. 3429511 -> CT 340035 -> | v | v | v | v |
| | -> 9195.077 | 107 A | termostato spia acqua/thermostat M 16 | 1 | 1 | 1 | 1 |
| G 47 | 9730.100 | 9 | vite/screw M 8 X 1,25 X 25 | 2 | 2 | 2 | 2 |
| G 48 | 1760.032 | 9 | bullone/bolt M 6 X 1 X 14 | 1 | 1 | | |
| G 49 | ex 3630.038 | 9 B | -> da/from s.No. 3171397 -> CT 320015 ; -> da/from s.No. 3163575 -> CT 320016 -> | v | v | | |
| | -> 3630.146 | 107 A | fascetta/clamp diam.25-40 | 6 | 6 | | |
| G 50 | ex 3630.043 | 9 B | -> da/from s.No. 3171397 -> CT 320015 ; -> da/from s.No. 3163575 -> CT 320016 -> | v | v | | |
| | -> 3630.147 | 107 A | fascetta/clamp diam.12-22 | 2 | 2 | | |
| G 51 | ex 5401.139 | - - npd | -> da/from s.No. 3171397 -> CT 320015 ; -> da/from s.No. 3163575 -> CT 320016 -> | v | v | | |
| | -> 5365.069 | 107 A | manicotto/shim | 1 | 1 | | |
| G 52 | ex 5401.140 | 107 B | -> da/from s.No. 3171397 -> CT 320015 ; -> da/from s.No. 3163575 -> CT 320016 -> | v | v | | |
| | -> 5365.070 | 107 A | manicotto/shim | 1 | 1 | | |
| G 53 | ex 7350.064 | - - npd | -> da/from s.No. 3171397 -> CT 320015 ; -> da/from s.No. 3163575 -> CT 320016 -> | v | v | | |
| | -> 7350.084 | 107 A | radiatore/water cooler | 1 | 1 | | |
| G 54 | 7625.007 | 9 | rondella/washer | 3 | 3 | | |
| G 55 | ex 8545.312 | 107 B | -> da/from s.No. 3171397 -> CT 320015 -> | v | v | | |
| | ex 8545.284 | - - npd | -> da/from s.No. 3163575 -> CT 320016 -> | v | v | | |
| | -> 8545.380 | 107 A | staffa destra/right bracket | 1 | 1 | | |
| G 56 | ex 8545.313 | 107 B | -> da/from s.No. 3171397 -> CT 320015 -> | v | v | | |
| | ex 8545.285 | - - npd | -> da/from s.No. 3163575 -> CT 320016 -> | v | v | | |
| | -> 8545.381 | 107 A | staffa sinistra/left bracket | 1 | 1 | | |
| G 57 | ex 8636.095 | 105 B | -> da/from s.No. 3171397 -> CT 320015 ; -> da/from s.No. 3163575 -> CT 320016 -> | v | v | | |
| | -> 8636.112 | 107 A | supporto antivibr./vibrat.isolator | 4 | 4 | | |
| G 58 | ex 9265.111 | 105 B | -> da/from s.No. 3171397 -> CT 320015 ; -> da/from s.No. 3163575 -> CT 320016 -> | v | v | | |
| | ex 9265.122 | 107 B | -> da/from s.No. 3320046 -> CT 320041 -> | v | v | | |
| | ex 9265.137 | - - - | -> da/from s.No. 3324500 -> CT 320041 -> | v | v | | |
| | -> 9265.157 | 107 I | - sostituito da/superseded by - - - -> | v | v | | |
| | -> 9265.114 | 107 I | tirante destro/right brace | 1 | 1 | | |
| G 59 | ex 9265.114 | 107 B | -> da/from s.No. 3171397 -> CT 320015 -> | v | v | | |
| | ex 9265.113 | 105 B | -> da/from s.No. 3163575 -> CT 320016 -> | v | v | | |
| | ex 9265.120 | 107 B | -> da/from s.No. 3320046 -> CT 320041 -> | v | v | | |
| | ex 9265.121 | 105 B | -> da/from s.No. 3245000 -> CT 320041 -> | v | v | | |
| | ex 9265.141 | - - - | - sostituito da/superseded by - - - -> | v | v | | |
| | -> 9265.158 | 107 I | tirante sinistro/left brace | 1 | 1 | | |
| G 60 | ex 9305.048 | 107 B | -> da/from s.No. 3171397 -> CT 320015 ; -> da/from s.No. 3163575 -> CT 320016 -> | v | v | | |
| | -> 9305.073 | 107 A | tubo collegamento/union pipe | 1 | 1 | | |
| G 61 | ex 9730.263 | 107 B | -> da/from s.No. 3171397 -> CT 320015 ; -> da/from s.No. 3163575 -> CT 320016 -> | v | v | | |
| | -> 9732.074 | 9 A | vite/screw M 8 X 20 | 2 | 2 | | |
| G 62 | ex 9032.053 | 107 B | -> da/from s.No. 3171397 -> CT 320015 ; -> da/from s.No. 3163575 -> CT 320016 -> | v | v | | |
| | -> 9032.070 | 107 A | tappo/water cooler cap | 1 | 1 | | |
| Motore/Engine LDW FOCS 502 Versione/Version 727980 | | | | | | | |
| " " LDW FOCS 602 Versione/Version 727530 | | | | | | | |
| " " LDW FOCS 903 Versione/Version 727770 | | | | | | | |
| " " LDW FOCS 1204 Versione/Version 727620 | | | | | | | |
| LOMBARDINI MOTORI F.I.M. S.p.a. | | | | Edizione del/Issue of 10.1996 | | | |



LDW 502 - 602 - 903 - 1204 FOCS
vedi Tavola Ric./see Parts Table 1.5302.486

| Pos. | Matricola/Part No. | Note/Remarks | LDW 502 | LDW 602 | LDW 903 | LDW 1204 |
|-------|-----------------------|--|---------|---------|---------|----------|
| G 62 | ex | -> da/from s.No. 311397 -> CT 320015 ; -> da/from s.No. 3163575 -> CT 320016 -> | v | | | |
| | -> 5365.068 107 A | manicotto/shim | 1 | 1 | | |
| G 64 | ex | -> da/from s.No. 3171397 -> CT 320015 ; -> da/from s.No. 3163575 -> CT 320016 -> | v | v | | |
| | -> 9305.060 107 A | tubo collegamento/union pipe | 1 | 1 | | |
| G 65 | ex | -> da/from s.No. 3171397 -> CT 320015 ; -> da/from s.No. 3163575 -> CT 320016 -> | v | v | | |
| | -> 3527.324 107 A | distanziale/spacer | 2 | 2 | | |
| G 66 | ex | -> da/from s.No. 3171397 -> CT 320015 -> -> da/from s.No. 3163575 -> CT 320016 -> | v | v | | |
| | -> 3240.008 9 A | dado/nut M 6 | 4 | 4 | | |
| G 67 | ex | -> da/from s.No. 3171397 -> CT 320015 ; -> da/from s.No. 3163575 -> CT 320016 -> | v | v | | |
| | -> 3617.089 837 A | fascetta/clamp | 1 | 1 | | |
| G 68 | 9040.012 183 | tappo/plug | 1 | 1 | 1 | 1 |
| G 69 | 9195.050 104 | sensore per termom.el./sensor M 14 | 1 | 1 | 1 | 1 |
| G 70 | ex | -> da/from s.No. 3429337 -> CT 320050 ; -> da/from s.No. 3429410 -> CT 330044 ; -> da/from s.No. 3429511 -> CT 340035 -> | v | v | v | |
| | -> 2501.116 107 A | colonna/hollowstud | 1 | 1 | 1 | 1 |
| G 71 | 4670.061 9 | guarniz.rame/copper gasket d.14 | 1 | 1 | 1 | 1 |
| G 72 | 9195.067 104 | sensore per centralina/sensor M 14 | 1 | 1 | 1 | 1 |
| G 73 | 4670.061 9 | guarniz.rame/copper gasket d.14 | 1 | 1 | 1 | 1 |
| G 74 | ex 8636.098 106 B | -> da/from s.No. 3238056 -> CT 330027 -> | | | v | |
| | -> 8636.129 - - - - - | sostituito da/superseded by - - - - -> | | | v | |
| | > 8536.146 105 I | supporto antiv./vibration isolator | | | 2 | |
| G 75 | ex 9265.115 - - npd | -> da/from s.No. 3238056 -> CT 330027 -> | | | v | |
| | ex 9245.152 106 B | -> da/from s.No. 3273425 -> CT 330036 -> | | | v | |
| | -> 9265.140 115 A | tirante/brace | | | 1 | |
| G 76+ | 9000.114 105 | tappo/cap | | | 1 | |
| G 77 | =9710.105 107 | VASCETTA/BOWL (Pos. 76-77) | | | 1 | |
| G 78 | ex 9305.071 106 B | -> fino a/until 3238055 -> CT 330027 | | | v | |
| G 79 | 3203.075 9 | dado/nut M 8 | | | 2 | |
| G 80 | 7625.010 9 | rondella/washer diam.8 | | | 1 | |
| G 81 | 1760.001 9 | bullone/bolt M 6 X 1 X 10 | | | 2 | |
| G 82 | ex 7625.007 9 B | -> da/from s.No. 3238056 -> CT 330027 -> | | | v | |
| | -> 7625.009 9 A | rondella/washer diam.7 | | | 4 | |
| G 83 | ex 1760.001 9 B | -> da/from s.No. 3238056 -> CT 330027 -> | | | v | |
| | -> 9730.008 9 A | bullone/bolt M 6 X 1 X 10 | | | 4 | |
| G 84 | ex 5401.137 106 B | -> da/from s.No. 3238056 -> CT 330027 -> | | | v | |
| | -> 5401.154 106 A | manicotto/shim | | | 1 | |
| G 85 | ex 2569.414 106 B | -> da/from s.No. 3238056 -> CT 330027 -> | | | v | |
| | -> 2569.478 106 A | convogliatore/shroud | | | 1 | |
| G 86 | ex 5401.138 106 B | -> da/from s.No. 3238056 -> CT 330027 -> | | | v | |
| | ex 5401.155 - - - - - | sostituito da/superseded by - - - - -> | | | v | |
| | -> 5401.196 106 I | manicotto/shim | | | 1 | |
| G 87 | ex 7350.065 - - npd | -> da/from s.No. 3238056 -> CT 330027 -> | | | v | |
| | -> 7350.095 106 A | RADIATORE DOPPIO CIRC./WATER COOLER (Pos. 82-83-85-87) | | | 1 | |
| G 88 | ex 8545.315 106 B | -> da/from s.No. 3238056 -> CT 330027 -> | | | v | |
| | ex 8545.417 - - - - - | sostituito da/superseded by - - - - -> | | | v | |
| | -> 8545.488 106 I | staffa destra/right brace | | | 1 | |
| G 89 | 3203.075 9 | dado/nut M 8 | | | 1 | |
| G 90 | 7625.010 9 | rondella/washer diam.8 | | | 2 | |

| | | | |
|---------------|---------------|------------------|--------|
| Motore/Engine | LDW FOCS 502 | Versione/Version | 727980 |
| " | LDW FOCS 602 | Versione/Version | 727630 |
| " | LDW FOCS 903 | Versione/Version | 727770 |
| " | LDW FOCS 1204 | Versione/Version | 727620 |

| LDW 502 - 602 - 903 - 1204 FOCS vedi Tavola Ric./see Parts Table 1.5302.486 | | | | LDW 502 | LDW 602 | LDW 903 | LDW 1204 |
|--|--------------------|---------|---|-------------------------------|---------|---------|----------|
| Pos. | Matricola/Part No. | | Note/Remarks | | | | |
| G 91 | ex 8636.099 | 106 | B -> da/from s.No. 3238056 -> CT 330027 -> | | | | v |
| | -> 8636.128 | - - - - | sostituito da/superseded by - - - -> | | | | v |
| | -> 8636.145 | 106 | I supporto antiv./vibration isolator | | | | 2 |
| | 7625.010 | 9 | rondella/washer diam.8 | | | | 2 |
| G 92 | ex 8545.316 | 106 | B -> da/from s.No. 3238056 -> CT 330027 -> | | | | v |
| G 93 | ex 8545.416 | - - - - | sostituito da/superseded by - - - -> | | | | v |
| | -> 8545.487 | 106 | I staffa sinistra/left brace | | | | 1 |
| G 94 | ex 9265.116 | 106 | B -> da/from s.No. 3238056 -> CT 330027 -> | | | | v |
| | ex 9245.150 | 106 | B -> da/from s.No. 3273425 -> CT 330036 -> | | | | v |
| | ex 9265.139 | - - - - | sostituito da/superseded by - - - -> | | | | v |
| | -> 9265.163 | 115 | I tirante/brace | | | | 1 |
| G 95 | ex 3630.038 | 9 | B -> da/from s.No. 3238056 -> CT 330027 -> | | | | v |
| | -> 3630.146 | 107 | A fascetta/clamp | | | | 4 |
| G 96 | ex 3630.043 | 9 | B -> da/from s.No. 3238056 -> CT 330027 -> | | | | v |
| | -> 3630.147 | 107 | A fascetta/clamp | | | | 1 |
| G 97 | 9305.073 | 107 | tubo collegamento/water pipe | | | | 1 |
| H 1 | ex 7090.014 | 107 | B -> da/from s.No. 3368363 -> CT 320045 ; -> da/from s.No. 3383877 -> CT 320045 ; -> da/from s.No. 3380282 -> CT 330039 ; -> da/from s.No. 3377274 -> CT 340029 -> | v | | | |
| | -> 6975.292 | 107 | A puleggia motrice/driving pulley | 1 | 1 | 1 | 1 |
| H 2+ | ex 1213.302 | 107 | B -> da/from s.No. 3368363 -> CT 320045 ; -> da/from s.No. 3383877 -> CT 320045 ; -> da/from s.No. 3380282 -> CT 330039 ; -> da/from s.No. 3377274 -> CT 340029 -> | v | | | |
| | -> 1213.343 | 107 | A anello paraolio/seal ring 32X50X6 | 1 | 1 | 1 | 1 |
| H 3+ | 4670.060 | 9 | guarnizione/joint | 1 | 1 | 1 | 1 |
| H 4+ | 9015.005 | 107 | tappo/plug | 1 | 1 | 1 | 1 |
| H 5+ | 5625.008 | 107 | molla/spring | 1 | 1 | 1 | 1 |
| H 6+ | 6495.045 | 107 | pistoncino/drive rod | 1 | 1 | 1 | 1 |
| H 7 | 8400.106 | 107 | spina/pin | 1 | 1 | 1 | 1 |
| H 8 | 8400.108 | 107 | spina/pin | 2 | 2 | 2 | 2 |
| H 9+ | 9800.061 | 9 | vite/screw M 6 X 1 X 16 | 3 | 3 | 3 | 3 |
| H 10 | 4431.130 | 107 | guarnizione/joint | 1 | 1 | | |
| H 11+ | | | vedi/see Pos. 18 | | | | |
| H 12 | 1200.030 | 9 | anello OR/rubber oil seal | 1 | 1 | 1 | 1 |
| H 13+ | | | vedi/see Pos. 18 | | | | |
| H 14 | 9732.064 | 9 | vite/screw M 8 X 1,25 X 30 | 1 | 1 | 1 | 1 |
| H 15 | ex 1200.225 | 107 | B -> da/from s.No. 3418153 -> CT 320053 ; -> da/from s.No. 3418160 -> CT 330047 ; -> da/from s.No. 3418154 -> CT 340038 -> | v | | | |
| | -> 1200.274 | 107 | A anello OR/rubber oil seal d.8,00 | 1 | 1 | 1 | 1 |
| H 16 | 9485.186 | 107 | tubo ritorno olio/scavenge oil pipe | 1 | 1 | | |
| H 17 | 9732.074 | 9 | vite/screw M 8 X 1,25 X 20 | 6 | 6 | 6 | 6 |
| H 18 | ex 6605.075 | 107 | B -> da/from s.No. 3368363 -> CT 320045 ; -> da/from s.No. 3383877 -> CT 320045 ; -> da/from s.No. 3159973 -> CT 330015 -> | v | | | |
| | ex 6605.078 | 115 | B -> da/from s.No. 3380282 -> CT 330039 -> | | | | v |
| | ->=6605.087 | 107 | A POMPA OLIO COMPLETA/OIL PUMP ASS.Y | 1 | 1 | 1 | |
| | ex 6605.078 | 115 | B -> da/from s.No. 3377274 -> CT 340029 -> | | | | v |
| | ex 6605.088 | - - - - | sostituito da/superseded by - - - -> | | | | v |
| | ->=6605.093 | 115 | I POMPA OLIO/OIL PUMP ASS.Y (Pos. 2-3-4-5-6-9-11-13-18-19-20) | | | | 1 |
| Motore/Engine LDW FOCS 502 Versione/Version 727980 | | | | | | | |
| " " LDW FOCS 602 Versione/Version 727630 | | | | | | | |
| " " LDW FOCS 903 Versione/Version 727770 | | | | | | | |
| " " LDW FOCS 1204 Versione/Version 727620 | | | | | | | |
| LOMBARDINI MOTORI F.I.M. S.p.a. | | | | Edizione del/Issue of 10.1996 | | | |



LDW 502 - 602 - 903 - 1204 FOCS
vedi Tavola Ric./see Parts Table 1.5302.486

| Pos. | Matricola/Part No. | Note/Remarks | LDW 502 | LDW 602 | LDW 903 | LDW 1204 |
|-------|-----------------------|---|---------|---------|---------|----------|
| H 19+ | 1200.215 104 | anello OR/O ring | 1 | 1 | 1 | 1 |
| H 20+ | | vedi/see Pos. 18 | | | | |
| H 21 | ex 4580.156 - - - - - | sostituito da/superseded by - - - - - | v | v | v | v |
| | -> 4580.176 107 I | guarnizione pompa olio/oil pump gask. | 1 | 1 | 1 | 1 |
| H 22 | 1200.034 9 | anello OR/rubber oil seal | 1 | 1 | 1 | 1 |
| H 23 | ex 1400.189 - - - - - | sostituito da/superseded by - - - - - | v | v | v | v |
| | -> 1400.262 107 I | asta livello olio/oil dipstick | 1 | 1 | 1 | 1 |
| H 24 | 7500.018 271 | rondella/washer | 14 | 14 | 18 | 22 |
| H 25 | 9730.009 9 | vite/screw M 6 X 1 X 12 | 14 | 14 | 18 | |
| | 9/32.084 9 | vite/screw M 6 X 1 X 12 | | | | 22 |
| H 27 | 6645.241 107 | portina di fondo/oil pan | 1 | 1 | | |
| H 28 | ex 4670.060 9 B | -> da/from s.No. 3245481 -> CT 320030 ; -> da/from s.No. 3245495 -> CT 320030 ; -> da/from s.No. 3244764 -> CT 330028 ; -> da/from s.No. 3249283 -> CT 340017 -> | v | v | | |
| | -> 1200.267 9 A | anello OR/O ring | 2 | 2 | 2 | 2 |
| H 29 | ex 8965.003 9 B | -> da/from s.No. 3245481 -> CT 320030 ; -> da/from s.No. 3245495 -> CT 320030 ; -> da/from s.No. 3244764 -> CT 330028 ; -> da/from s.No. 3249283 -> CT 340017 -> | v | v | v | v |
| | -> 9040.017 107 A | tappo/plug M 12 | 2 | 2 | 2 | 2 |
| H 30 | 1760.003 9 | bullone/bolt M 6 X 1 X 12 | 1 | 1 | 1 | 1 |
| H 31 | 7625.008 9 | rondella/washer | 1 | 1 | 1 | 1 |
| H 32 | 7265.021 115 | raccordo cartuc./oil filter connect. | 1 | 1 | 1 | 1 |
| H 33 | 2175.107 107 | cartuccia olio/oil filter element | 1 | 1 | 1 | |
| | 2175.131 115 | cartuccia olio/oil filter element | | | | 1 |
| H 34 | ex 3430.000 107 B | -> fino a/until 3368363 -> CT 320045 ; -> fino a/until 3383877 -> CT 320045 ; -> fino a/until 3380410 -> CT 330039 ; -> fino a/until 3377273 -> CT 340029 . | v | v | v | v |
| | | vedi/see Pos. C 10 | | | | |
| H 35 | 4431.120 106 | guarnizione/joint | | | 1 | |
| H 36 | 9485.125 106 | tubo ritorno olio/scavenge oil pipe | | | 1 | |
| H 37 | 9485.173 115 | tubo ritorno olio/scavenge oil pipe | | | | 1 |
| H 38 | 4431.132 115 | guarnizione/joint | | | | 1 |
| H 39 | 6645.231 106 | portina di fondo/oil pan | | | 1 | |
| H 40 | 6645.249 115 | portina di fondo/oil pan | | | | 1 |
| H 41 | | | | | | |
| I 1 | 3203.074 107 | dado/nut | 1 | 1 | 1 | 1 |
| I 2 | 4670.060 9 | guarnizione in rame/copper joint | 1 | 1 | 1 | 1 |
| I 3 | 4190.109 107 | ghiera/nut | 1 | 1 | 1 | 1 |
| I 4 | ex 6000.049 107 B | -> fino a/until 3465188 -> CT 320059 ; -> fino a/until 3465189 -> CT 330053 ; -> fino a/until 3465190 -> CT 340045 . | v | v | v | v |
| I 5 | ex 5200.664 - - npd | -> da/from s.No. 3303702 -> CT 320031 ; -> da/from s.No. 3303709 -> CT 320031 ; -> da/from s.No. 3303249 -> CT 330029 ; -> da/from s.No. 3304141 -> CT 340018 -> | v | v | v | v |
| | ex 5200.815 - - npd | -> da/from s.No. 3465189 -> CT 320059 ; -> da/from s.No. 3465190 -> CT 330053 ; -> da/from s.No. 3465191 -> CT 340045 -> | v | v | v | v |
| | -> 5200.856 107 I | leva esterna com.accelerat./ext.lever | 1 | 1 | 1 | 1 |
| I 6 | ex 1380.035 107 E | -> da/from s.No. 3161313 -> CT 320013 -> | v | v | | |
| | ex 1380.041 - - - - - | sostituito da/superseded by - - - - - | v | v | | |
| | ->=1380.058 107 I | ASTA DI COLLEGAMENTO/CONNECTING ROD (Pos. 6-8-9-23) | 1 | 1 | | |

| | | |
|---------------|---------------|-------------------------|
| Motore/Engine | LDW FOCS 502 | Versione/Version 727980 |
| " | LDW FOCS 602 | Versione/Version 727630 |
| " | LDW FOCS 903 | Versione/Version 727770 |
| " | LDW FOCS 1204 | Versione/Version 727620 |

| LDW 502 - 602 - 903 - 1204 FOCS vedi Tavola Ric./see Parts Table 1.5302.486 | | | | LDW 502 | LDW 602 | LDW 903 | LDW 1204 |
|--|--------------------|---------|---|-------------------------------|---------|---------|----------|
| Pos. | Matricola/Part No. | | Note/Remarks | | | | |
| I 9 | 6320.048 | 115 | piastra/plate | 2 | 2 | 2 | 2 |
| I 94 | 9732.096 | 9 | vite/screw M 3 X 0,5 X 6 | 4 | 4 | 4 | 4 |
| I 11 | 4670.059 | 9 | guarnizione per ghiera/ring gasket | 1 | 1 | 1 | 1 |
| I 12 | ex 8576.052 | - - - - | sostituito da/superseded by - - - - > | v | v | v | v |
| | -> 8576.077 | 107 | I supplemento coppia/extra fuel device | 1 | 1 | 1 | 1 |
| I 14 | ex 1755.001 | 9 | B -> fino a/until 3465188 -> CT 320059 ; | v | v | | |
| | | | -> fino a/until 3465189 -> CT 330053 ; | | | v | |
| | | | -> fino a/until 3465190 -> CT 340045 . | | | | v |
| I 15 | ex 7626.017 | 9 | B -> fino a/until 3465188 -> CT 320059 ; | v | v | v | |
| | | | > fino a/until 3465189 -> CT 330053 ; | | | | v |
| | | | -> fino a/until 3465190 -> CT 340045 . | | | | v |
| I 16 | 1200.052 | 9 | anello OR/rubber oil seal | 1 | 1 | 1 | 1 |
| I 17 | 3240.008 | 9 | dado/nut | 2 | 2 | 2 | 2 |
| I 18 | 9180.011 | 70 | terminale/wire end | 2 | 2 | 2 | 2 |
| I 19 | ex 5801.203 | 107 | B -> da/from s.No. 3383866 -> CT 320047 ; | v | | | |
| | | | -> da/from s.No. 3384161 -> CT 320047 ; | | v | | |
| | | | -> da/from s.No. 3383851 -> CT 330041 ; | | | v | |
| | | | -> da/from s.No. 3383450 -> CT 340031 -> | | | | v |
| | -> 5801.535 | 107 | A molla supplemento/device spring | 1 | 1 | 1 | 1 |
| I 20 | ex 6370.238 | 107 | B -> da/from s.No. 3383866 -> CT 320047 ; | v | | | |
| | | | -> da/from s.No. 3384161 -> CT 320047 ; | | v | | |
| | | | -> da/from s.No. 3383851 -> CT 330041 ; | | | v | |
| | | | -> da/from s.No. 3383450 -> CT 340031 -> | | | | v |
| | -> 6370.518 | 107 | A piastrina di ancoraggio/stop plate | 1 | 1 | 1 | 1 |
| I 21 | 7626.017 | 9 | rondella/washer | 1 | 1 | 1 | 1 |
| I 22 | 3203.077 | 9 | dado/nut M 4 | 1 | 1 | 1 | 1 |
| I 23 | 7626.037 | 9 | rondella/washer | 2 | 2 | 4 | 6 |
| I 24 | ex 5655.144 | - - npd | -> da/from s.No. 3215275 -> CT 320028 ; | v | | | |
| | | | -> da/from s.No. 3218322 -> CT 320028 ; | | v | | |
| | | | -> da/from s.No. 3216048 -> CT 330025 ; | | | v | |
| | | | -> da/from s.No. 3216467 -> CT 340015 -> | | | | v |
| | -> 5655.185 | 107 | I molla reg./gov. spring 3600 rpm | 1 | 1 | 1 | 1 |
| | " | 107 | " " " 3000 rpm | | | | |
| | " | 107 | " " " 2400-2600 rpm | | | | |
| | " | 107 | " " " 1500-1800 rpm | | | | |
| I 25 | 3240.008 | 9 | dado/nut | 2 | 2 | 2 | 2 |
| I 26 | 1760.128 | 107 | bullone registro/adjusting bolt | 2 | 2 | 2 | 2 |
| I 27 | ex 6110.079 | 107 | B -> da/from s.No. 3277040 -> CT 320027 ; | v | | | |
| | | | -> da/from s.No. 3276626 -> CT 320027 ; | | v | | |
| | | | -> da/from s.No. 3277703 -> CT 330024 ; | | | v | |
| | | | -> da/from s.No. 3260325 -> CT 340014 -> | | | | v |
| | -> 6110.101 | 107 | A perno leva regolat./control lever pin | 1 | 1 | 1 | 1 |
| I 28 | 6000.049 | 107 | pastiglia/nut | 1 | 1 | 1 | 1 |
| I 29 | 9865.202 | 107 | vite/screw M 3 X 0,5 X 10 | 2 | 2 | 3 | 1 |
| I 30 | 1200.037 | 9 | anello OR/rubber oil seal | 1 | 1 | 1 | 1 |
| I 31 | 1755.001 | 9 | bullone/bolt M 5 X 0,8 X 8 | 1 | 1 | 1 | 1 |
| I 32 | 5200.414 | 107 | leva esterna com.stop/external lever | 1 | 1 | 1 | 1 |
| I 33 | 3240.008 | 9 | dado/nut | 1 | 1 | 1 | 1 |
| I 34 | 5660.047 | 107 | molla rich.leva stop/return spring | 1 | 1 | 1 | 1 |
| I 35 | 1200.051 | 9 | anello OR/rubber oil seal | 1 | 1 | 1 | 1 |
| I 36 | 6275.114 | 107 | piastrina di fermo/stop plate | 1 | 1 | 1 | 1 |
| I 37 | 1760.128 | 107 | bullone registro/adjusting bolt | 1 | 1 | 1 | 1 |
| I 38 | 3203.074 | 107 | dado/nut | 1 | 1 | 1 | 1 |
| I 39 | 4670.062 | 9 | guarnizione in rame/copper joint | 1 | 1 | 1 | 1 |
| I 41 | ex 5660.048 | 107 | B -> da/from s.No. 3303702 -> CT 320031 ; | v | | | |
| | | | -> da/from s.No. 3303709 -> CT 320031 ; | | v | | |
| | | | -> da/from s.No. 3303249 -> CT 330029 ; | | | v | |
| | | | -> da/from s.No. 3304141 -> CT 340018 -> | | | | v |
| | -> 5660.065 | 107 | A molla rich.leva acc./return spring | 1 | 1 | 1 | 1 |
| I 42 | 1957.009 | 107 | bussola/sleeve | 1 | 1 | 1 | 1 |
| I 43 | 1760.081 | 9 | vite/screw | 1 | 1 | 1 | 1 |
| I 44 | 5200.674 | 107 | leva interna com.acc./internal lever | 1 | 1 | 1 | 1 |
| Motore/Engine LDW FOCS 502 Versione/Version 727980 | | | | | | | |
| " " LDW FOCS 602 Versione/Version 727620 | | | | | | | |
| " " LDW FOCS 903 Versione/Version 727770 | | | | | | | |
| " " LDW FOCS 1204 Versione/Version 727620 | | | | | | | |
| LOMBARDINI MOTORI F.I.M. S.p.a. | | | | Edizione del/Issue of 10.1996 | | | |

| LDW 502-602-903-1204 FOCS vedi Tavola Ric./see Parts Table 1.5302.486 | | | | LDW 502 | LDW 602 | LDW 903 | LDW 1204 |
|--|--------------------|-----------|--|---------|---------|---------|----------|
| Pos. | Matricola/Part No. | | Note/Remarks | | | | |
| I 45 | 5200.420 | 107 | leva molla regol./contr. spring lever | 1 | 1 | 1 | 1 |
| I 46+ | 6140.420 | 107 | perno/journal | 1 | 1 | 1 | 1 |
| I 47 | ex 5200.641 | - - - - - | sostituito da/superseded by - - - - - > | v | v | v | v |
| | ->=5200.893 | 107 | I LEVA COMANDO REGOL./CONTROL LEVER (Pos. 46-47) | 1 | 1 | 1 | 1 |
| I 48 | 6760.044 | 9 | prigioniero/stud M 6 X 7 (19) | 1 | 1 | 1 | 1 |
| I 50 | 1954.014 | 107 | bussola/sleeve | 1 | 1 | 1 | 1 |
| I 51 | 5200.413 | 107 | leva interna com.stop/internal lever | 1 | 1 | 1 | 1 |
| I 52 | ex 1380.036 | - - npd | -> da/from s.No. 3159973 -> CT 330013 -> | | | v | |
| | ex 1380.042 | - - - - - | sostituito da/superseded by - - - - - > | | | v | |
| | ->=1380.059 | 106 | I ASTA DI COLLEGAMENTO/CONNECTING ROD (Pos. 8-9-23-52-54) | | | 1 | |
| I 53 | ex 1380.034 | - - npd | -> da/from s.No. 3161629 -> CT 340004 -> | | | | |
| | ex 1380.043 | - - - - - | sostituito da/superseded by - - - - - > | | | | |
| | ->=1380.060 | 115 | I ASTA DI COLLEGAMENTO/CONNECTING ROD (Pos. 8-9-23-53-54-55) | | | | 1 |
| I 54+ | 6320.045 | 106 | piastrina/plate | | | 1 | 2 |
| I 55+ | 6275.127 | 106 | piastrina/plate | | | 1 | 2 |
| L 1 | ex 2125.201 | 107 | B -> da/from s.No. 3277040 -> CT 320027 -> | v | | | |
| | ex 2125.238 | - - - - - | sostituito da/superseded by - - - - - > | v | | | |
| | ex 2125.256 | - - npd | -> da/from s.No. 3507300 -> CT 320063 -> | v | | | |
| | -> 2125.273 | 107 | A , cappello bilancieri/rocker arm cover | 1 | | | |
| | ex 2125.202 | - - npd | -> da/from s.No. 3276626 -> CT 320027 -> | | v | | |
| | ex 2125.246 | - - npd | -> da/from s.No. 3507300 -> CT 320063 -> | | v | | |
| | ->=2125.275 | 105 | A CAPPELLO BIL.COMP./ROCKER ARM COVER (Pos. 1-2-8-10-11-14-15-17-19-21) | | 1 | | |
| L 2+ | ex 9580.041 | 107 | B -> da/from s.No. 3103239 -> CT 320005 ; | | v | | |
| | ex 9580.051 | - - npd | -> da/from s.No. 3104274 -> CT 330005 -> | | | v | |
| | | | -> da/from s.No. 3507300 -> CT 320063 ; | | v | | |
| | | | -> da/from s.No. 3507450 -> CT 330057 ; | | | v | |
| | -> 9580.065 | 107 | A tubo/tube | | | | v |
| L 3 | 9032.061 | 105 | tappo rif.olio/oil filler cap | 1 | 1 | 1 | 1 |
| L 4 | ex 9730.010 | 9 | R -> da/from s.No. 3277040 -> CT 320027 ; | v | 1 | 1 | 1 |
| | | | -> da/from s.No. 3276626 -> CT 320027 ; | | v | | |
| | | | -> da/from s.No. 3277703 -> CT 330024 ; | | | v | |
| | -> 9730.012 | 9 | A vite/screw M 6 X 1 X 20 | | | | v |
| L 5 | 8545.322 | 107 | staffa di sollevamento/lifting brace | 9 | 9 | 12 | 14 |
| L 6 | ex 9400.096 | 107 | B -> da/from s.No. 3103239 -> CT 320005 ; | 2 | 2 | 2 | 2 |
| | | | -> da/from s.No. 3104274 -> CT 330005 -> | | v | | |
| | -> 9400.098 | 107 | A tubo drenaggio/drain pipe | | | v | |
| L 7 | ex | 9 | A -> da/from s.No. 3152013 -> CT 320017 -> | v | 1 | 1 | 1 |
| | -> 3630.043 | 9 | A fascetta/clamp | 2 | 1 | 1 | 1 |
| Motore/Engine LDW FOCS 502 Versione/Version 727980 | | | | | | | |
| " " LDW FOCS 602 Versione/Version 727630 | | | | | | | |
| " " LDW FOCS 903 Versione/Version 727770 | | | | | | | |
| " " LDW FOCS 1204 Versione/Version 727620 | | | | | | | |

| LDW 502 - 602 - 903 - 1204 FOCS vedi Tavola Ric./see Parts Table 1.5302.486 | | | | LDW 502 | LDW 602 | LDW 903 | LDW 1204 |
|--|-----------------------|--|--|-------------------------------|---------|---------|----------|
| Pos. | Matricola/Part No. | Note/Remarks | | | | | |
| L 8 | 9080.132 9 | tappo/plug diam. 6 | | 1 | 1 | 1 | 1 |
| " | 9080.133 516 | tappo/plug diam. 8 | | 1 | 1 | 1 | 1 |
| L 9 | 5365.030 107 | manicotto/connection | | 1 | 1 | 1 | 1 |
| L 10+ | | vedi/see Pos. 14 | | | | | |
| L 11+ | | vedi/see Pos. 14 | | | | | |
| L 13 | ex 3617.166 107 B | -> da/from s.No. 3103239 -> CT 320005 ; | | | v | | |
| | | -> da/from s.No. 3104274 -> CT 330005 -> | | | | v | |
| | -> 3617.168 515 A | fascetta/strip fixing | | 1 | 1 | 1 | 1 |
| L 14 | =5066.220 105 | LAMIERA SEPARATRICE COMPI. /SEPARATOR (Pos. 10-11-14-17-19-21) | | 1 | | | |
| L 15+ | | vedi/see Pos. 1 | | | | | |
| L 16+ | 5755.005 271 | molla valvola/valve spring | | 4 | 4 | 6 | 8 |
| L 17+ | | vedi/see Pos. 14 | | | | | |
| L 18+ | 6410.017 271 | piattello con semic./spring retainer | | 4 | 4 | 6 | 8 |
| L 19+ | | vedi/see Pos. 14 | | | | | |
| L 20+ | ex 4845.127 - - npd | -> da/from s.No. 3233575 -> CT 320026 ; | | v | v | | |
| | | -> da/from s.No. 3232031 -> CT 330023 ; | | | | v | |
| | | -> da/from s.No. 3239563 -> CT 340013 -> | | | | | v |
| | -> 4845.200 107 A | guida valvola/valve guide std. | | 4 | 4 | 6 | 8 |
| | ex 4845.201 - - npd | -> da/from s.No. 3233575 -> CT 320026 ; | | v | v | | |
| | | -> da/from s.No. 3232031 -> CT 330023 ; | | | | v | |
| | | -> da/from s.No. 3239563 -> CT 340013 -> | | | | | v |
| | -> 4845.220 107 A | guida valvola/valve guide +0,50 | | 4 | 4 | 6 | 8 |
| L 21+ | | vedi/see Pos. 14 | | | | | |
| L 22 | ex 4730.362 107 B | -> da/from s.No. 3277040 -> CT 320027 ; | | v | | | |
| | | -> da/from s.No. 3276626 -> CT 320027 -> | | | v | | |
| | -> 4400.055 107 A | guarnizione/joint | | 1 | 1 | | |
| L 23 | ex 9200.364 - - npd | -> da/from s.No. 3277040 -> CT 320027 ; | | v | | | |
| | | -> da/from s.No. 3276626 CT 320027-> | | | v | | |
| | ex 9200.471 - - npd | -> da/from s.No. 3409203 -> CT 320054-> | | v | v | | |
| | ex 9200.505 - - - | sostituita da/supersedes by -> CT, D 054 -> | | v | v | | |
| | ->=9200.522 107 A | TESTA MOTORE COMPOSTA/CYLINDER HEAD (Pos. 16-18-20-23-25-27-28-29-30-31- 36-37-44-48-49-50-51) | | 1 | 1 | | |
| L 24 | 7625.130 107 | rondella/washer | | 6 | 6 | 8 | 10 |
| L 25+ | 8990.047 107 | tappo/plug d.18 | | 1 | 1 | 2 | 6 |
| L 26 | 9820.119 105 | vite speciale/special screw | | 6 | 6 | 8 | 10 |
| L 27+ | 7625.185 107 | rondella/washer | | 4 | 4 | 6 | 8 |
| L 28+ | 9685.105 115 | valvola scarico/exhaust valve | | 2 | 2 | 3 | 4 |
| L 29+ | 9652.101 115 | valvola aspirazione/intake valve | | 2 | 2 | 3 | 4 |
| L 30+ | 9080.132 9 | tappo/plug d.6 | | 2 | 2 | 2 | 2 |
| L 31+ | ex 8990.022 9 B | -> da/from s.No. 3409203 -> CT 320054 ; | | v | v | | |
| | | -> da/from s.No. 3409219 -> CT 330048 ; | | | | v | |
| | | -> da/from s.No. 3409265 -> CT 340039 -> | | | | | v |
| | -> 9065.007 107 A | tappo/plug | | 1 | 1 | 1 | 1 |
| L 33 | 4130.096 107 | ghiera/nut | | 2 | 2 | 3 | 4 |
| L 34 | 6725.029 107 | precamera completa/precomb.chamber | | 2 | | | |
| | ex 6725.030 - - - - - | sostituito da/superseded by - - - - -> | | | v | v | v |
| | -> 6725.054 105 I | precamera completa/precomb.chamber | | 2 | 3 | 4 | |
| Motore/Engine LDW FOCS 502 Versione/Version 727980 | | | | | | | |
| " " LDW FOCS 602 Versione/Version 727630 | | | | | | | |
| " " LDW FOCS 903 Versione/Version 727770 | | | | | | | |
| " " LDW FOCS 1204 Versione/Version 727620 | | | | | | | |
| LOMBARDINI MOTORI F.I.M. S.p.a. | | | | Edizione del/Issue of 10.1996 | | | |

| LDW 502 - 602 - 903 - 1204 FOCS vedi Tavola Ric./see Parts Table 1.5302.486 | | | | LDW 502 | LDW 602 | LDW 903 | LDW 1204 |
|--|--------------------|--------------|---|---------|---------|---------|----------|
| Pos. | Matricola/Part No. | Note/Remarks | | | | | |
| L 35 | ex 4730.359 | - - - - | sostituito da/superseded by - - - - -> | v | v | | |
| | ex 4730.433 | - - npd | -> da/from s.No. -> CT 320024 -> | v | v | | |
| | ex 4730.449 | - - npd | -> da/from s.No. 3319166 -> CT 320034 ; | v | v | | |
| | | | -> da/from s.No. 3320017 -> CT 320034 -> | | | | |
| | ex 4730.483 | - - npd | -> da/from s.No. 3476049 -> CT 320069 -> | v | v | | |
| | -> 4730.542 | 107 I | guarniz. testa/head gasket 1,50 (0) | 1 | 1 | | |
| | ex 4730.360 | - - - - | sostituito da/superseded by - - - - -> | v | v | | |
| | ex 4730.434 | - - npd | -> da/from s.No. -> CT 320024 -> | v | v | | |
| | ex 4730.450 | - - npd | -> da/from s.No. 3319166 -> CT 320034 ; | v | v | | |
| | | | -> da/from s.No. 3320017 -> CT 320034 -> | | | | |
| | ex 4730.484 | - - npd | -> da/from s.No. 3476049 -> CT 320069 -> | v | v | | |
| | -> 4730.543 | 107 I | guarniz. testa/head gasket 1,65 (1) | 1 | 1 | | |
| | ex 4730.361 | - - - - | sostituito da/superseded by - - - - -> | v | v | | |
| | ex 4730.435 | - - npd | -> da/from s.No. -> CT 320024 -> | v | v | | |
| | ex 4730.451 | - - npd | -> da/from s.No. 3319166 -> CT 320034 ; | v | v | | |
| | | | -> da/from s.No. 3320017 -> CT 320034 -> | | | | |
| | ex 4730.485 | - - npd | -> da/from s.No. 3476049 -> CT 320069 -> | v | v | | |
| | -> 4730.544 | 107 I | guarniz. testa/head gasket 1,80 (2) | 1 | 1 | | |
| | | | (0) senza intagli/no semicircular cut | | | | |
| | | | (1) 1 intaglio/semicircular cut | | | | |
| | | | (2) 2 intagli/semicircular cuts | | | | |
| L 36+ | 8000.121 | 112 | sede valvola aspiraz./intake v.seat | 2 | 2 | 3 | 4 |
| L 37+ | 8000.122 | 112 | sede valvola scar./exhausting v.seat | 2 | 2 | 3 | 4 |
| L 38 | ex | | -> da/from s.No. 3103239 -> CT 320005 ; | | v | | |
| | | | -> da/from s.No. 3152013 -> CT 320017 ; | v | | | |
| | ex 9680.028 | - - npd | -> da/from s.No. 3104274 -> CT 330005 -> | | | v | |
| | | | -> da/from s.No. 3507300 -> CT 320063 ; | v | v | | |
| | | | -> da/from s.No. 3507450 -> CT 330057 ; | | | v | |
| | | | -> da/from s.No. 3507255 -> CT 340049 -> | | | | v |
| L 40 | -> 9680.034 | 107 A | valvola pressione/pressure valve | 1 | 1 | 1 | 1 |
| | ex | | -> da/from s.No. 3103239 -> CT 320005 ; | v | v | | |
| | | | -> da/from s.No. 3104274 -> CT 330005 -> | | | v | |
| L 41 | ex 3527.298 | - - - - | non più montato/no longer fitted - - - - | v | v | v | |
| | ex | | -> da/from s.No. 3152013 -> CT 320017 -> | v | | | |
| | ex 5365.064 | - - npd | -> da/from s.No. 3196856 -> CT 320021 -> | v | v | | |
| | -> 5365.076 | 107 A | tubo colleg./union pipe mm 74 | 1 | | | |
| | ex | | -> da/from s.No. 3152013 -> CT 320017 -> | v | | | |
| | ex 5365.065 | - - npd | -> da/from s.No. 3196856 -> CT 320021 -> | v | v | | |
| | -> 5365.077 | 107 A | tubo colleg./union pipe mm 93 | 1 | | | |
| L 42 | ex | | -> da/from s.No. 3152013 -> CT 320017 -> | v | | | |
| | ex 5365.063 | - - npd | -> da/from s.No. 3196856 -> CT 320021 -> | v | v | | |
| | -> 5365.075 | 107 A | tubo colleg./union pipe | 1 | | | |
| L 43 | ex | | -> da/from s.No. 3196856 -> CT 320021 -> | v | | | |
| | ex 9599.139 | - - - - | sostituito da/superseded by - - - - -> | v | | | |
| | ex 9580.151 | - - npd | -> da/from s.No. 3507300 -> CT 320063 -> | v | | | |
| | -> 9599.165 | 107 A | tubo colleg./union pipe | 1 | | | |
| L 44+ | ex | | -> da/from s.No. 3233575 -> CT 320026 ; | v | v | | |
| | | | -> da/from s.No. 3232031 -> CT 330023 ; | | | v | |
| | | | -> da/from s.No. 3239563 -> CT 340013 -> | | | | v |
| | -> 4535.015 | 107 A | 0 guarnizione/gasket | 4 | 4 | 6 | 8 |
| L 45 | ex 3866.063 | 107 B | -> da/from s.No. 3409203 -> CT 320054 -> | v | v | | |
| | ex 3866.090 | - - - - | non più disp./no longer available - - - - | v | v | | |
| L 47 | ex 3866.073 | 107 B | -> da/from s.No. 3409203 -> CT 320054 ; | v | v | | |
| | | | -> da/from s.No. 3409219 -> CT 330048 ; | | | v | |
| | | | -> da/from s.No. 3409265 -> CT 340039 -> | | | | v |
| | -> 3866.089 | 107 A | flangia/flange | 1 | 1 | 1 | 1 |

| | | |
|---------------|---------------|-------------------------|
| Motore/Engine | LDW FOCS 502 | Versione/Version 727980 |
| " | LDW FOCS 602 | Versione/Version 727630 |
| " | LDW FOCS 903 | Versione/Version 727770 |
| " | LDW FOCS 1204 | Versione/Version 727620 |

| LDW 502 - 602 - 903 - 1204 FOCS vedi Tavola Ric./see Parts Table 1.5302.486 | | | | LDW 502 | LDW 602 | LDW 903 | LDW 1204 |
|--|-----------------------|--------------|--|-------------------------------|---------|---------|----------|
| Pos. | Matricola/Part No. | Note/Remarks | | | | | |
| L 49+ | ex | | -> da/from s.No. 3409203 -> CT 320054 ; -> da/from s.No. 3409219 -> CT 330048 ; -> da/from s.No. 3409265 -> CT 340039 -> | v | v | | |
| | ex 5570.015 - - npd | | -> da/from s.No. 3468897 -> CT 320059 ; -> da/from s.No. 3468896 -> CT 330053 ; -> da/from s.No. 3468898 -> CT 340045 -> | v | v | v | |
| | -> 5570.019 107 I | | molla tenuta/retainer | 1 | 1 | 1 | 1 |
| L 49+ | ex | | -> da/from s.No. 3409203 -> CT 320054 ; -> da/from s.No. 3409219 -> CT 330048 ; -> da/from s.No. 3409265 -> CT 340039 -> | v | v | v | |
| L 50+ | -> 1770.127 9 A | | bullone/bolt M 8 X 14 | 1 | 1 | 1 | 1 |
| L 50+ | ex | | -> da/from s.No. 3409203 -> CT 320054 ; -> da/from s.No. 3409219 -> CT 330048 ; -> da/from s.No. 3409265 -> CT 340039 -> | v | v | v | |
| L 51+ | -> 1200.081 9 A | | anello OR/O ring | 1 | 1 | 1 | 1 |
| L 51+ | ex | | -> da/from s.No. 3409203 -> CT 320054 ; -> da/from s.No. 3409219 -> CT 330048 ; -> da/from s.No. 3409265 -> CT 340039 -> | v | v | v | |
| | -> 7625.010 9 A | | rondezza/washer d.8 | 1 | 1 | 1 | 1 |
| L 52 | ex 2125.204 - - npd | | -> da/from s.No. 3277703 -> CT 330024 -> | | | v | |
| | ex 2125.247 - - npd | | -> da/from s.No. 3507450 -> CT 330057 -> | | | v | |
| | ->=2125.277 106 A | | CAPPELLO BIL.COMP./ROCKER ARM COVER (Pos. 2-8-10-11-15-17-19-21-52-55) | | | 1 | |
| L 53 | ex 2125.216 115 B | | -> da/from s.No. 3260325 -> CT 340014 -> | | | | |
| | ex 2125.248 - - npd | | -> da/from s.No. 3507255 -> CT 340049 -> | | | | |
| | ->=2125.279 115 A | | CAPPELLO BIL.COMP./ROCKER ARM COVER (Pos. 2-8-10-11-15-17-19-21-53-58) | | | | |
| L 54 | ex 4730.298 106 B | | -> da/from s.No. 3277703 -> CT 330024 -> | | | v | |
| | -> 4400.056 106 A | | guarnizione/joint | | | 1 | |
| L 55 | =5066.222 106 | | LAMIERA SEPARATRICE COMP./SEPARATOR (Pos. 10-11-17-19-21-55) | | | 1 | |
| L 56 | ex 9200.365 - - npd | | -> da/from s.No. 3277703 -> CT 330024 -> | | | v | |
| | ex 9200.476 - - npd | | -> da/from s.No. 3409219 -> CT 330048 -> | | | v | |
| | ex 9200.507 - - - | | sostituita da/supersedes by -> CT D 054 -> | | | v | |
| | ->=9200.523 106 A | | TESTA MOTORE COMPOSTA/CYLINDER HEAD (Pos. 16-18-20-25-27-28-29-30-31-36-37-44-48-49-50-51-56) | | | 1 | |
| L 57 | ex 4775.429 115 B | | -> da/from s.No. 3260325 -> CT 340014 -> | | | | |
| | -> 4400.057 115 A | | guarnizione/joint | | | | |
| L 58 | ex 5066.213 - - - - - | | sostituito da/supersedes by - - - - -> | | | | |
| | =5066.265 115 I | | LAMIERA SEPARATRICE COMP./SEPARATOR (Pos. 10-11-17-19-21-58) | | | | 1 |
| L 59 | ex 9200.397 115 B | | -> da/from s.No. 3260325 -> CT 340014 -> | | | | |
| | ex 9200.480 - - npd | | -> da/from s.No. 3409265 -> CT 340039 -> | | | | |
| | ex 9200.509 - - - | | sostituita da/supersedes by -> CT D 054 -> | | | | |
| | ->=9200.524 115 A | | TESTA MOTORE COMPOSTA/CYLINDER HEAD (Pos. 16-18-20-25-27-28-29-30-31-36-37-44-48-49-50-51-59) | | | | 1 |
| Motore/Engine LDW FOCS 502 Versione/Version 727980 | | | | | | | |
| " " LDW FOCS 602 Versione/Version 727630 | | | | | | | |
| " " LDW FOCS 903 Versione/Version 727770 | | | | | | | |
| " " LDW FOCS 1204 Versione/Version 727620 | | | | | | | |
| LOMBARDINI MOTORI F.I.M. S.p.a. | | | | Edizione del/Issue of 10.1996 | | | |



LDW 502 - 602 - 903 - 1204 FOCS
vedi Tavola Ric./see Parts Table 1.5302.486

| Pos. | Matricola/Part No. | Note/Remarks | LDW 502 | LDW 602 | LDW 903 | LDW 1204 |
|---|------------------------|---|---------|---------|---------|----------|
| L 60 | ex 4730.365 - - npd - | -> CT 330021 -> | | | v | |
| | ex 4730.452 - - npd -> | da/from s.No. 3382089 -> CT 330030 -> | | | v | |
| | ex 4730.486 - - npd -> | da/from s.No. 3476049 -> CT 330062 -> | | | v | |
| | -> 4730.545 106 I | guarniz.testa/head gasket 1,50 (0) | | | 1 | |
| | ex 4730.366 - - npd - | -> CT 330021 -> | | | v | |
| | ex 4730.453 - - npd -> | da/from s.No. 3382089 -> CT 330030 -> | | | v | |
| | ex 4730.487 - - npd -> | da/from s.No. 3476049 -> CT 330062 -> | | | v | |
| | -> 4730.546 106 I | guarniz.testa/head gasket 1,65 (1) | | | 1 | |
| | ex 4730.367 - - npd - | -> CT 330021 -> | | | v | |
| | ex 4730.454 - - npd -> | da/from s.No. 3382089 -> CT 330030 -> | | | v | |
| | ex 4730.488 - - npd -> | da/from s.No. 3476049 -> CT 330062 -> | | | v | |
| | -> 4730.547 106 I | guarniz.testa/head gasket 1,80 (2) | | | 1 | |
| L 61 | ex 4730.368 - - npd - | -> CT 340011 -> | | | | |
| | ex 4730.455 - - npd -> | da/from s.No. 3283188 -> CT 340020 -> | | | | |
| | ex 4730.489 - - npd -> | da/from s.No. 3476049 -> CT 340056 -> | | | | |
| | -> 4730.548 115 I | guarniz.testa/head gasket 1,50 (0) | | | | 1 |
| | ex 4730.369 - - npd - | -> CT 340011 -> | | | | |
| | ex 4730.456 - - npd -> | da/from s.No. 3283188 -> CT 340020 -> | | | | |
| | ex 4730.490 - - npd -> | da/from s.No. 3476049 -> CT 340056 -> | | | | |
| | -> 4730.549 115 I | guarniz.testa/head gasket 1,65 (1) | | | | 1 |
| | ex 4730.370 - - npd - | -> CT 340011 -> | | | | |
| | ex 4730.457 - - npd -> | da/from s.No. 3283188 -> CT 340020 -> | | | | |
| | ex 4730.491 - - npd -> | da/from s.No. 3476049 -> CT 340056 -> | | | | |
| | -> 4730.550 115 I | guarniz.testa/head gasket 1,80 (2) | | | | 1 |
| (0) senza intagli/no semicircular cut (1) 1 intaglio/semicircular cut (2) 2 intagli/semicircular cuts | | | | | | |
| M 1 | ex 1780.027 9 B | -> da/from s.No. 3468515 -> CT 320049 ; -> da/from s.No. 3468710 -> CT 330043 ; -> da/from s.No. 3466512 -> CT 340034 -> | v | | v | |
| | -> 1780.129 9 A | bullone/bolt M 10 X 1,5 X 75 | 1 | 1 | 1 | 1 |
| M 2 | 7625.020 9 | rondella/washer diam.10 | 1 | 1 | 1 | 1 |
| M 3 | 9732.064 9 | vite/screw M 8 X 1,25 X 30 | 3 | 3 | 3 | 3 |
| M 4 | 3240.033 9 | dado/nut | 1 | 1 | 1 | 1 |
| M 5 | ex 8725.050 105 B | -> da/from s.No. 3468515 -> CT 320049 ; -> da/from s.No. 3468710 -> CT 330043 ; -> da/from s.No. 3466512 -> CT 340034 -> | v | | v | |
| | -> 8725.060 105 A | supp.per alternatore 33 A/alt.support | 1 | 1 | 1 | 1 |
| | 8725.053 105 | supp.per alternat.45-65 A/alt.support | 1 | 1 | 1 | 1 |
| M 6 | ex 2100.058 107 E | -> da/from s.No. 3615457 -> CT 320055 ; -> da/from s.No. 3428621 -> CT 320055 ; -> da/from s.No. 3428660 -> CT 330049 ; -> da/from s.No. 3428615 -> CT 340040 -> | v | | v | |
| | ex 2100.072 - - - - | sostituito da/superseded by - - - -> | v | v | v | v |
| | -> 2100.077 107 I | candeletta/glow plug | 2 | 2 | 3 | 4 |
| M 7 | 2185.548 107 | cavo colleg./connection wire | 1 | 1 | 2 | 3 |
| M 8 | ex 1780.027 9 B | -> da/from s.No. 3468515 -> CT 320049 ; -> da/from s.No. 3468710 -> CT 330043 ; -> da/from s.No. 3466512 -> CT 340034 -> | v | v | v | |
| | -> 1770.014 9 A | bullone/bolt M 8 X 1,25 X 45 | 1 | 1 | 1 | 1 |
| M 9 | ex 7625.020 9 B | -> da/from s.No. 3468515 -> CT 320049 ; -> da/from s.No. 3468710 -> CT 330043 ; -> da/from s.No. 3466512 -> CT 340034 -> | v | v | v | |
| | -> 7625.012 9 A | rondella/washer diam. 8 | 1 | 1 | 1 | 1 |

| | | |
|---------------|---------------|-------------------------|
| Motore/Engine | LDW FOCS 502 | Versione/Version 727980 |
| " | LDW FOCS 602 | Versione/Version 727630 |
| " | LDW FOCS 903 | Versione/Version 727770 |
| " | LDW FOCS 1204 | Versione/Version 727620 |

| LDW 502-602-903-1204 FOCS vedi Tavola Ric./see Parts Table 1.5302.486 | | | | LDW 502 | LDW 602 | LDW 903 | LDW 1204 |
|--|--------------------|--------------|--|-------------------------------|---------|---------|----------|
| Pos. | Matricola/Part No. | Note/Remarks | | | | | |
| M 11 | ex 1157.070 | - - npd | -> da/from s.No. 3468515 -> CT 320049 ; -> da/from s.No. 3468710 -> CT 330043 ; -> da/from s.No. 3466512 -> CT 340034 -> | | V | V | |
| | -> 1157.261 | 107 A | alternatore/volt.alternator 12V-33A | | 1 | 1 | V |
| | 1157.269 | 104 | alternatore/volt.alternator 12V-45A | | 1 | 1 | 1 |
| | 1157.270 | 104 | alternatore/volt.alternator 12V-65A | | 1 | 1 | 1 |
| M 11 | ex 6275.146 | 107 B | -> da/from s.No. 3468515 -> CT 320049 ; -> da/from s.No. 3468710 -> CT 330043 ; -> da/from s.No. 3466512 -> CT 340034 -> | | V | V | |
| | -> 6275.150 | 105 A | piastra/plate M 8 | | 1 | 1 | 1 |
| M 12 | ex 5840.156 | - - npd | -> da/from s.No. 3369915 -> CT 320046 ; -> da/from s.No. 3369915 -> CT 330040 ; -> da/from s.No. 3369957 -> CT 340030 -> | V | V | V | |
| | -> 5840.146 | 107 I | motorino avviamento/start.engine | 1 | 1 | 1 | 1 |
| M 13 | 9730.045 | 9 | vite/screw M 10 X 1,5 X 30 | 2 | 2 | 2 | 2 |
| M 14 | ex 6745.044 | - - - - | sostituito da/superseded by - - - -> | V | V | V | V |
| | -> 6745.050 | 107 I | pressostato/switch oil | 1 | 1 | 1 | 1 |
| M 15 | 4670.060 | 9 | guarnizione in rame/copper gasket | 1 | 1 | 1 | 1 |
| M 16 | ex 5041.233 | 107 B | -> fino a/until 3369914 -> CT 320046 ; -> fino a/until 3369914 -> CT 330040 ; -> fino a/until 3369956 -> CT 340030 . | V | V | V | |
| M 17 | ex 6456.039 | - - npd | - fino a/until 3369914 -> CT 320046 ; -> fino a/until 3369914 -> CT 330040 ; -> fino a/until 3369956 -> CT 340030 . | V | V | V | V |
| M 18 | ex 8150.022 | 107 B | -> fino a/until 3369914 -> CT 320046 ; -> fino a/until 3369914 -> CT 330040 ; -> fino a/until 3369956 -> CT 340030 . | V | V | V | V |
| M 20 | 3240.005 | 9 | dado/nut | 2 | 2 | 3 | 4 |
| M 21 | 7626.066 | 9 | rondella/washer | 2 | 2 | 3 | 4 |
| M 22 | 3240.004 | 9 | dado/nut M 5 | 1 | 1 | 1 | 1 |
| M 23 | 7565.003 | 9 | rondella/washer | 1 | 1 | 1 | 1 |
| M 24 | 2185.810 | 107 | cavo motorino/starting motor wire | 1 | 1 | 1 | 1 |
| M 25 | 2145.014 | 276 | cappuccio/rubber cap | 1 | 1 | 1 | 1 |
| M 26 | ex 7362.228 | 283 B | -> fino a/until 3468514 -> CT 320049 ; -> fino a/until 3468709 -> CT 330043 ; -> fino a/until 3466511 -> CT 340034 . | V | V | V | V |
| M 27 | ex 6740.153 | 283 B | -> fino a/until 3468514 -> CT 320049 ; -> fino a/until 3468709 -> CT 330043 ; -> fino a/until 3466511 -> CT 340034 . | V | V | V | V |
| M 29 | ex 2185.861 | 107 B | -> da/from s.No. 3615457 -> CT 320055 ; -> da/from s.No. 3428621 -> CT 320055 -> | V | V | V | |
| | ex 2185.862 | 106 B | -> da/from s.No. 3428660 -> CT 330049 -> | | | V | |
| | ex 2185.868 | 115 B | -> da/from s.No. 3428615 -> CT 340040 -> | | | V | V |
| | -> 2185.867 | 115 A | cavo candelette/glow plug wire | 1 | 1 | 1 | 1 |
| M 30 | 2193.084 | 104 | centralina candelette/glow plug c.box | 1 | 1 | 1 | 1 |
| Motore/Engine LDW FOCS 502 Versione/Version 727980 | | | | | | | |
| " " LDW FOCS 602 Versione/Version 727630 | | | | | | | |
| " " LDW FOCS 903 Versione/Version 727770 | | | | | | | |
| " " LDW FOCS 1204 Versione/Version 727620 | | | | | | | |
| LOMBARDINI MOTORI F.I.M. S.p.a. | | | | Edizione del/Issue of 10.1996 | | | |



LDW 502 - 602 - 903 - 1204 FOCS
vedi Tavola Ric./see Parts Table 1.5302.486

| Pos | Matricola/Part No. | Note/Remarks | LDW 502 | LDW 602 | LDW 903 | LDW 1204 |
|---------------|---------------------|--|---------|---------|---------|----------|
| N 1 | ex 8150.020 - - npd | -> da/from s. No. 3418153 -> CT 320053 | v | v | | |
| | ex 8150.030 107 E | serie an./crankc.r.set-> CT D 054 | v | v | | |
| | ex 8180.169 - - npd | - set g.bnc/low.gask.set-> CT D 054 | v | v | | |
| | ex 8205.030 - - npd | - set g.tes/upp.gask.set-> CT D 054 | v | v | | |
| | ex 8205.031 - - npd | - set g.tes/upp.gask.set-> CT D 054 | v | v | | |
| | ex 8205.032 - - npd | - set g.tes/upp.gask.set-> CT D 054 | v | v | | |
| | ->=8205.062 107 A | SERIE COMPLETA ANELLI E GUARNIZIONI (esclusa Pos. L 35) RING AND GASKET COMPLETE SET (without Pos. L 35) (Pos.A 4-A 5-D20-D25-D28-E14-E17- E19-E29-F 8-F10-G17-G19-G30- H 2-H10-H12-H15-H19-H21-H22- I16-I30-I35-L 9-L22) | 1 | 1 | | |
| | ex 8150.020 - - npd | -> da/from s.No. 3418160 -> CT 330047 | | | v | |
| | ex 8150.030 107 E | serie an./crankc.r.set-> CT D 054 | | | v | |
| | ex 8180.170 - - npd | - set g.bnc/low.gask.set-> CT D 054 | | | v | |
| | ex 8205.033 - - npd | - set g.tes/upp.gask.set-> CT D 054 | | | v | |
| | ex 8205.034 - - npd | - set g.tes/upp.gask.set-> CT D 054 | | | v | |
| | ex 8205.035 - - npd | - set g.tes/upp.gask.set-> CT D 054 | | | v | |
| | ->=8205.063 106 A | SERIE COMPLETA ANELLI E GUARNIZIONI (esclusa Pos. L 35) RING AND GASKET COMPLETE SET (without Pos. L 35) (Pos.A 5-A32-D20-D25-D28-E14-E17- E19-E29-F 8-F10-G17-G19-G30- H 2-H12-H15-H19-H21-H22-H36- I16-I30-I35-L 9-L54) | | | 1 | |
| | ex 8150.020 - - npd | -> da/from s.No. 3418154 -> CT 340038 | | | | v |
| | ex 8150.030 107 E | serie an./crankc.r.set-> CT D 054 | | | | v |
| | ex 8180.174 - - npd | - set g.bnc/low.gask.set-> CT D 054 | | | | v |
| | ex 8205.044 - - npd | - set g.tes/upp.gask.set-> CT D 054 | | | | v |
| | ex 8205.045 - - npd | - set g.tes/upp.gask.set-> CT D 054 | | | | v |
| | ex 8205.046 - - npd | - set g.tes/upp.gask.set-> CT D 054 | | | | v |
| | ->=8205.064 115 A | SERIE COMPLETA ANELLI E GUARNIZIONI (esclusa Pos. L 35) RING AND GASKET COMPLETE SET (without Pos. L 35) (Pos.A 5-A36-D20-D25-D28-E14-E17- E19-E29-F 8-F10-G17-G19-G30- H 2-H12-H15-H19-H21-H22-H39- I16-I30-I35-L 9-L57) | | | | 1 |
| Motore/Engine | LDW FOCS 502 | Versione/Version 727980 | | | | |
| " | LDW FOCS 602 | Versione/Version 727630 | | | | |
| " | LDW FOCS 903 | Versione/Version 727770 | | | | |
| " | LDW FOCS 1204 | Versione/Version 727620 | | | | |