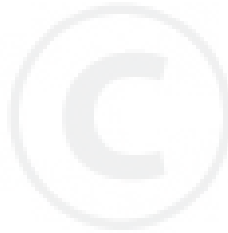
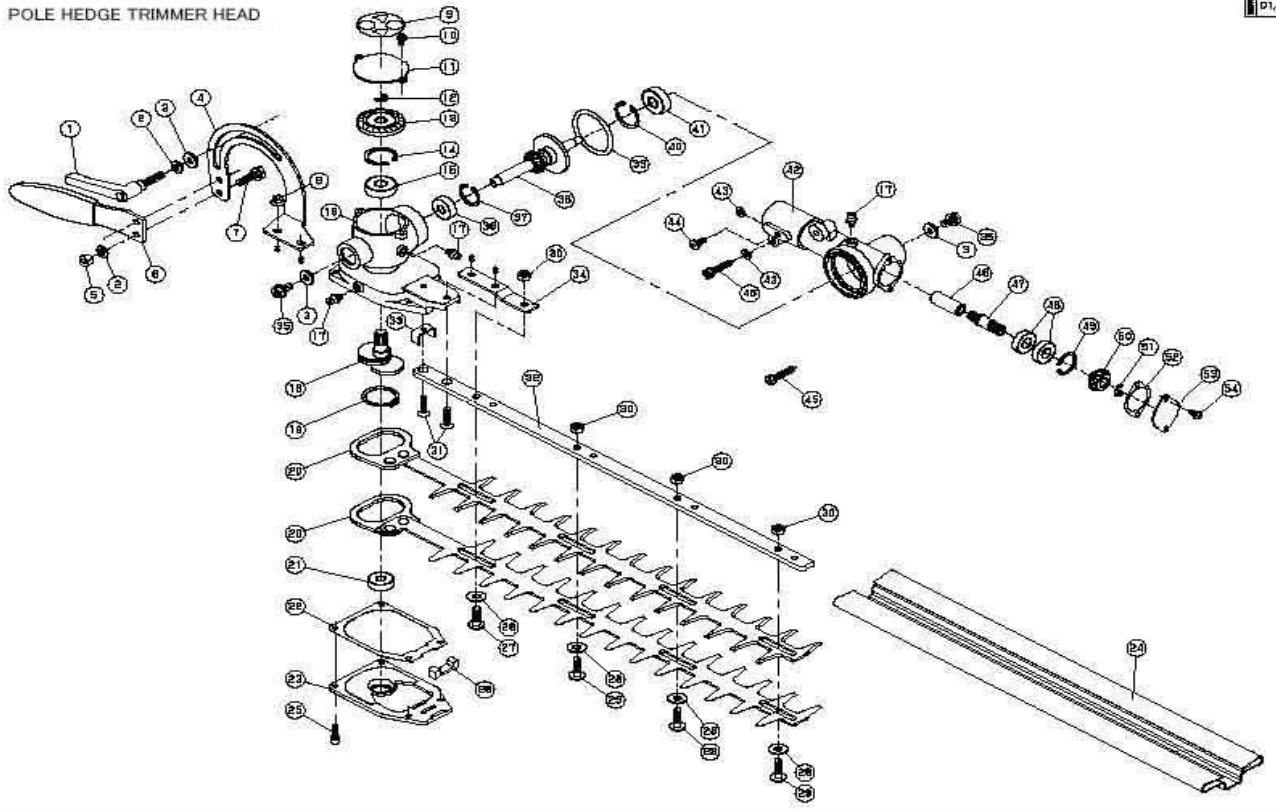


REF No.	CODE	NAME	QTY		REMARKS
			MCB24L	MCB242L	
1	741694476	HEDGE TRIMMER HEAD	1	1	φ24
2	800202937	DRIVE SHAFT HOUSING ASS'Y	1	1	φ24×753
2.1	800202938	DRIVE SHAFT HOUSING	1	1	φ24×753
2.2	801675694	METAL CUSHION	3	3	
2.3	801675695	OIL METAL	3	3	φ7×φ14×12
3	801694337	DRIVE SHAFT	1	1	φ7×791
4	801694340	STOP RING	1	1	#7
5	800201090	GRIP	1	1	
6	800202939	CAP	2	2	
7	800202946	MANUAL	1		
	800204489	MANUAL		1	

POLE HEDGE TRIMMER HEAD

D1/g2



HEAD PART OF POLE HEDGE TRIMMER MODEL PHT950 / 1550 / 1560 / MCB242L-PHT600

REF.NO	PARTS CODE	DESCRIPTION	QTY
1-1	R034-000900	LEVER CLAMP	1
1-2	K210-060000	WASHER M6	3
1-3	K207-060209	WASHER 6x15x2.0	3
1-4	A224-145003	ANGLE ADJUSTER 135°	1
1-5	K150-060000	NUT M6	2
1-6	A224-141003	HANDLE	1
1-7	K054-060220	BOLT M6x22	2
1-8	K162-050000	NUT M5	2
1-9	A052-172004	LABEL	1
1-10	K016-040080	SCREW	2
1-11	A196-112004	COVER	1
1-12	K280-006000	SNAP RING	1
1-13	A023-500444	BEVEL GEAR	1
1-14	K282-026000	SNAP RING	1
1-15	K354-060000	BEARING 6000	1
1-16	A224-148002	CASING A	1
1-17	R055-000100	GREASE FITTING	3
1-18	A024-000053	CRANK SHAFT	1
1-19	K283-028000	SNAP RING	1
1-20	A224-128009	BLADE 400mm LENGTH	2
	A224-139009	BLADE 600mm LENGTH	2
1-21	K353-006080	BEARING 608Z	1
1-22	A224-154004	PACKING	1
1-23	A224-153003	COVER	1
1-24	A028-200009	BLADE COVER 400mm	1
	A028-200029	BLADE COVER 600mm	1
1-25	K081-040121	BOLT M4x12	4
1-26	A224-112004	FELT	1
1-27	A040-002009	SCREW L19	1
1-28	□008-250	WASHER	4
1-29	A040-001009	SCREW L17	3
1-30	K164-060000	NUT M6	4
1-31	K031-050200	SCREW M5x20	2
1-32	A224-107003	GUIDE PLATE 400mm	1
	A224-140003	GUIDE PLATE 600mm	1
1-33	A224-131004	PLATE	1
1-34	A224-108004	PLATE	1
1-35	K054-060120	BOLT M6x12	2
1-36	K354-006080	BEARING 608 2RS	1
1-37	K282-022000	SNAP RING	1
1-38	A224-130004	GEAR SHAFT	1
1-39	K440-P41000	O-RING P41	1
1-40	K282-026000	SNAP RING	1
1-41	K354-060000	BEARING 6000	1
1-42	A224-161000	CASING D	1
1-43	K200-050000	WASHER 5x10x1.0	2
1-44	K010-050100	SCREW M5x10	1
1-45	K054-050250	BOLT M5x25	1
1-46	A224-110004	JOINT	1
1-47	A196-109004	GEAR SHAFT B	1
1-48	K352-069000	BEARING 6900RS	2
1-49	K282-022000	SNAP RING	1
1-50	A023-500434	BEVEL GEAR	1
1-51	K280-006000	SNAP RING	1
1-52	A196-114004	PACKING	1
1-53	A196-113004	COVER	1
1-54	K016-040080	SCREW M4x8	2

