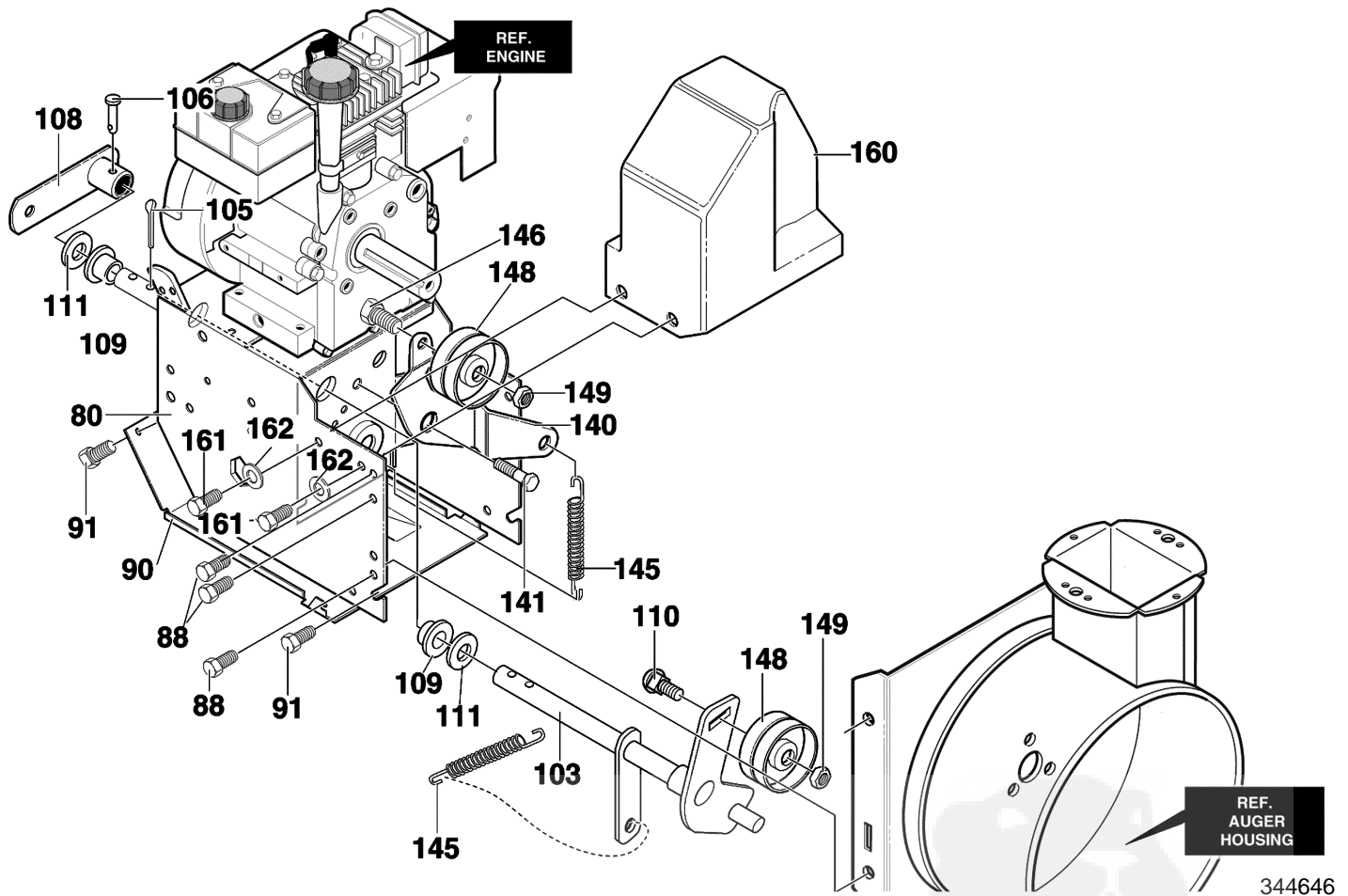


319042

Key No.	Description	Part No.
10	(See Engine Manual)	ENGINE
12	SCREW, 5/16-18	710024
13	WASHER	71060
41	GUIDE, ROD BELT	3949
42	PLASTIC WASHER	6711
43	WASHER	71060
44	SCREW, 5/16-24X 1.00	910828
45	SPACER	762291
53	PULLEY, HALF	579854
54	WASHER, FLAT	579861
57	BELT, V	579932
58	WASHER	712120
59	SPACER, SLEEVE	586251
60	PULLEY, ENGINE	586253
63	BELT, V	585416
67	WASHER, FLAT	50677
68	WASHER	71063
69	SCREW, 3/8-24X1.00	71015
—	OWNER'S MANUAL	F-021064L

MODEL 631114x61A

REPAIR PARTS FRAME COMPONENTS

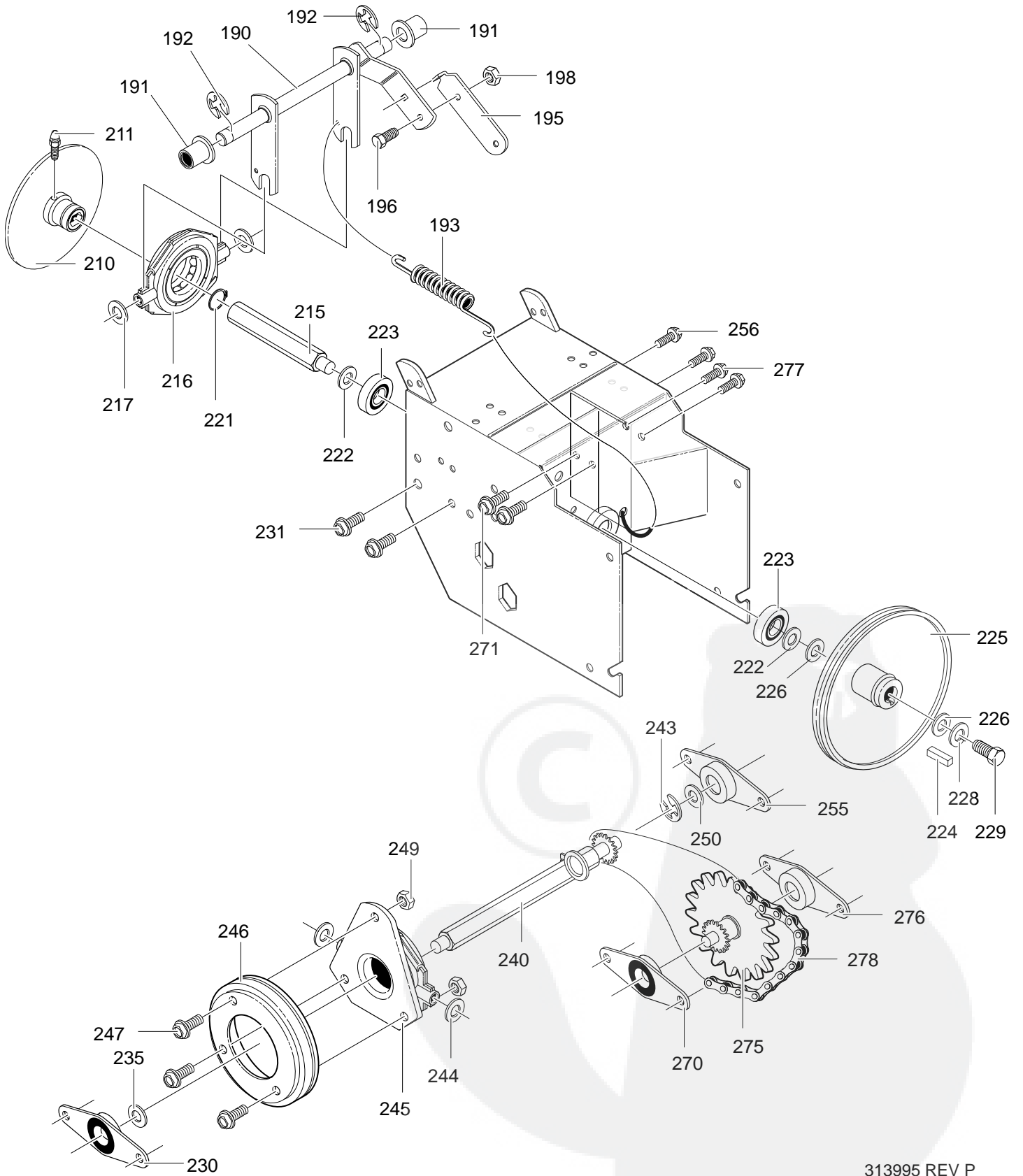


344646

Key No.	Description	Part No.
80	FRAME, ASSY	761705-892
88	SCREW, 5/16-18 X .50	780055
90	COVER, BOTTOM	583031-853
91	SCREW, 1/4-20X.63 WAHHTAP	310169
103	ASSY., IDLER	762296
105	HAIR PIN	711682
106	CLIP, KLIK	761761
108	ASSY.,SPRING ATTACH WHEEL	761766
109	BEARING, FLANGE	53703
110	BOLT 3/8-16X1.25	585781
111	FLATWASHER	711617
140	LEVER, IDLER ARM TRACTION	761701
141	BOLT, 5/16-18	329989
145	SPRING, IDLER TRACTION DR	53704
146	SCREW, 3/8-16X1.25	761760
148	PULLEY, IDLER	50793
149	NUT, 3/8-16 CTRLKJAM	590
160	BELT COVER	760479
161	SCREW, 1/4-20X.63 WAHHTAP	310169
162	FLATWASHER, .281X.63X.065	71067

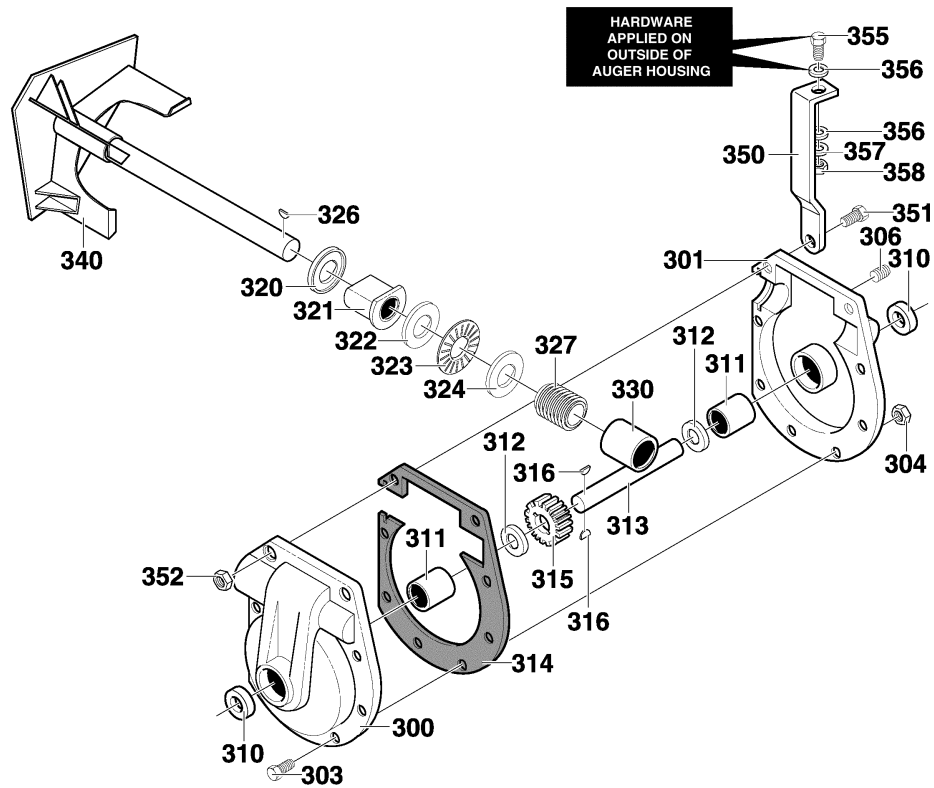
MODEL 631114x61A

REPAIR PARTS DRIVE COMPONENTS ASSEMBLY



313995 REV P

Key No.	Description	Part No.
190	LEVER, ASSY TRACTION CLUTCH	761820
191	BEARING, FLANGE	53703
192	RING, RET E	20864
193	SPRING, RETURN	53818
195	LEVER, SPRING	579937
196	SCREW, 1/4-20X .63	11871
198	NUT, 1/4-20 REGHEXCTRLK	73826
210	DISC, ASSY	583163-853
211	ZERK, GREASE	583206
215	SHAFT, HEX TRACTION	583155
216	BEARING, TRUNION	85501
217	FLATWASHER, .53 X1.00X.063	71074
221	RING, RETEX	73811
222	FLATWASHER, .680X1.12X.060	580969
223	BEARING, BALL	43846
224	KEY, SQUARE	71371
225	PULLEY, V3L 6.50X .56	580961
226	WASHER, WAVE	580965
227	FLATWASHER, .281X1.00X.063	712123
228	WASHER, SPLIT .26X.50X.06	71059
229	SCREW, 1/4-20X .75 HHC	1x176
230	BEARING & RETAINER	334163
231	SCREW, 5/16-18X .50	780055
235	WASHER, .502X .75X.0605	579858
240	HEX, ASSY#40-8T W/PBRG	579897
243	RING, RETEX	783002
244	FLATWASHER, .53 X1.00X.063	71074
245	BEARING, TRUNION	337029
246	WHEEL, ASSY FRICTION	53830
247	SCREW, 1/4-20X .63	11871
249	NUT, 1/4-20 HEXKEPS	303008
250	WASHER, .502X .75X.0605	579858
255	BEARING & RETAINER	334163
256	SCREW, 5/16-18X .50	780055
270	BEARING & RETAINER	334163
271	SCREW, 5/16-18X .50	780055
275	JACK, ASSY#41-36/7	761789
276	BEARING & RETAINER	334163
277	SCREW	780055
278	CHAIN ROLLER	579867

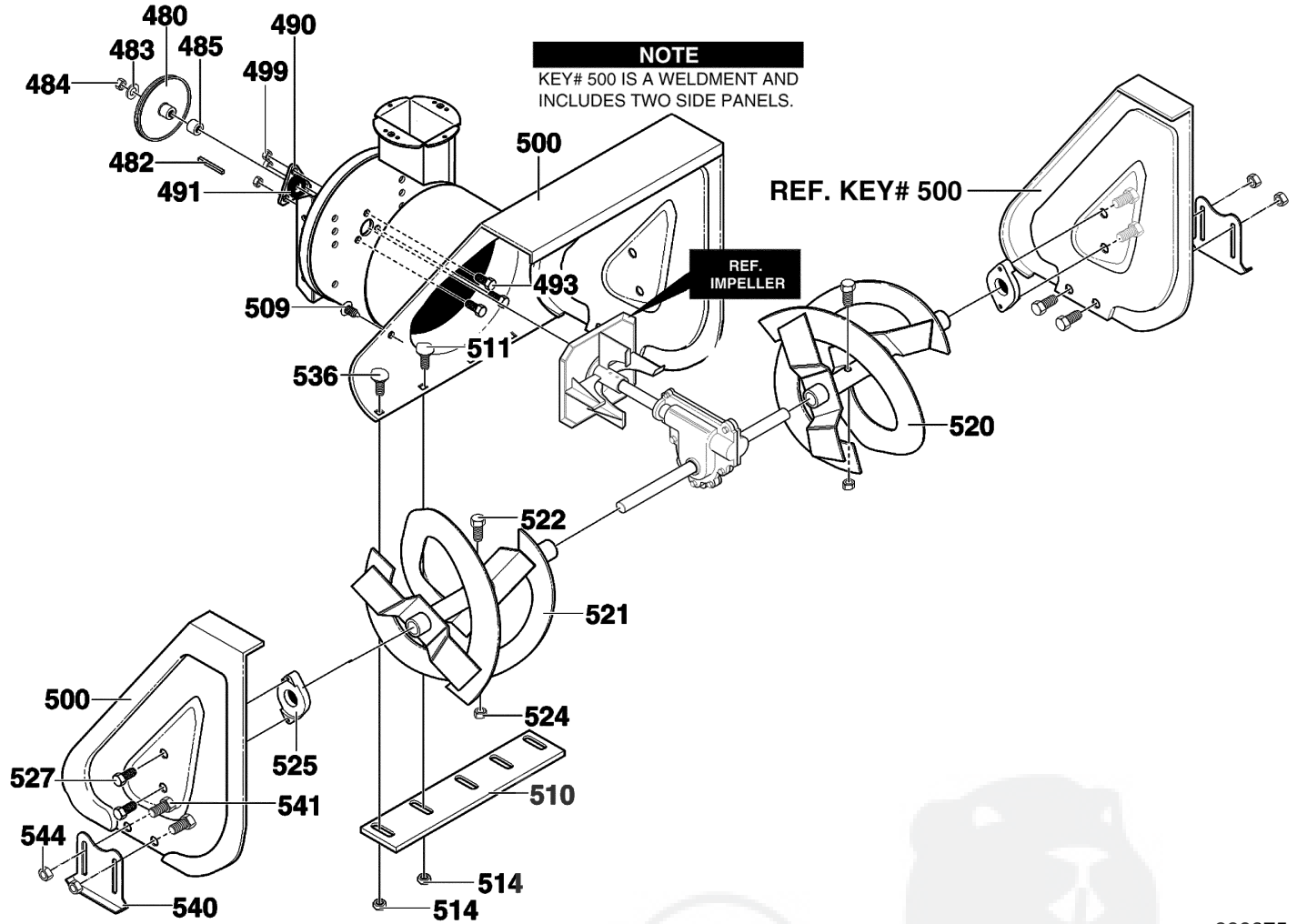


324820

Key No.	Description	Part No.
300	CASE, GEAR, RH	896
301	CASE, GEAR, LH	895
303	SCREW, 5/16-24X1.00	910828
304	NUT, 5/16-24	71100
306	PIPE PLUG	53749
310	SEAL, OIL	780151
311	BEARING, SLEEVE	53743
312	WASHER, FLAT 1.00X1.54X.09	53748
313	SHAFT, AUGER OUTPUT	760409
314	GASKET, GEAR BOX	897
315	WORM GEAR	53730
316	KEY, WOODRUFF #91	73905
320	RING, QUAD	53737
321	BEARING, FL	583126
322	WASHER, FLAT	48275
323	BEARING, ROLL	50684
324	WASHER, FLAT	48275
326	KEY	50795
327	WORM GEAR	53732
330	BEARING, SLEEVE	53731
340	IMPELLER	761609-853
350	BRACE, GEAR BOX	5524
351	SCREW 5/16-24X1.75	1441
352	NUT, 5/16-24 HEXWDFLLK	71100
355	SCREW, 5/16-18X1.25	302636
356	WASHER, FLAT .349X.69X.066	71071
357	WASHER, SPTLK .31X.58X.08	71060
358	NUT, 5/16-18 REGHEX	71037
—	10oz TUBE LUBRIPLATE	333431

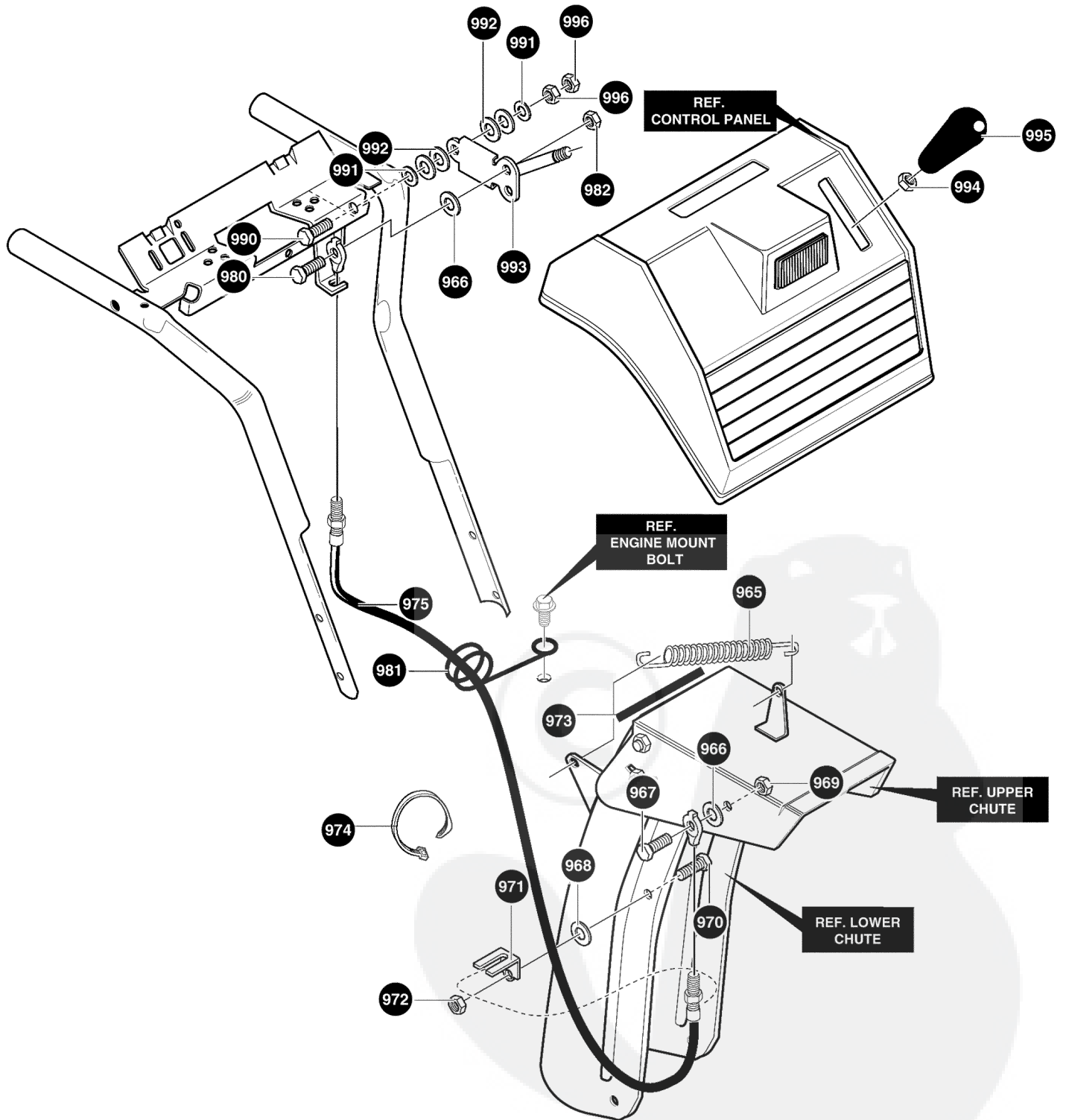
MODEL 631114x61A

REPAIR PARTS AUGER HOUSING ASSEMBLY

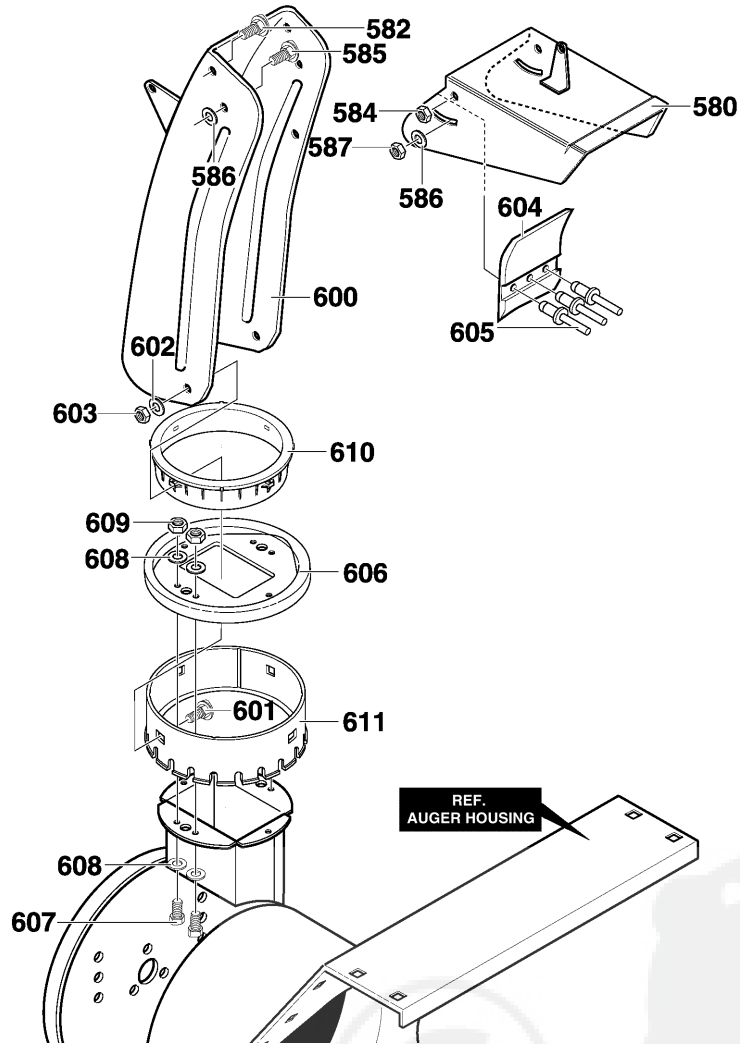


339975

Key No.	Description	Part No.	Key No.	Description	Part No.
480	PULLEY, 4L 8.40	583146	514	NUT, 5/16-18	710026
482	KEY, SQUARE	71371	520	AUGER, ASSY, LH	760321-853
483	WASHER, FLAT	71074	521	AUGER, ASSY, RH	760311-853
484	NUT, 1/2-20 REGHXCTRLK	712121	522	BOLT, .467X.235 HSH 5/16-18	578647
485	SPACER, SLEEVE	334514	524	NUT, 5/16-18 REGHEXCTRLK	71391
490	RETAINER, BALL BRNG	582960	525	AUGER SHAFT BEARING	53757
491	BEARING, BALL	43846	527	SCREW, 5/16-18X.75	70984
493	SCREW, 5/16-18X .75	313676	536	BOLT, 5/16-18X.75	340720
499	NUT, 5/16-18 HEXWDFLLK	710026	540	SKID, HEIGHT ADJUST	762376-853
500	HOUSING, ASSY	761881-892	541	CARR. BOLT, 5/16-18X.75	340720
509	PLUG	760040	544	NUT, 5/16-18 REGHEX	71037
510	BLADE, SCRAPER	760665-853			
511	BOLT, 5/16-18 X .75	340720			

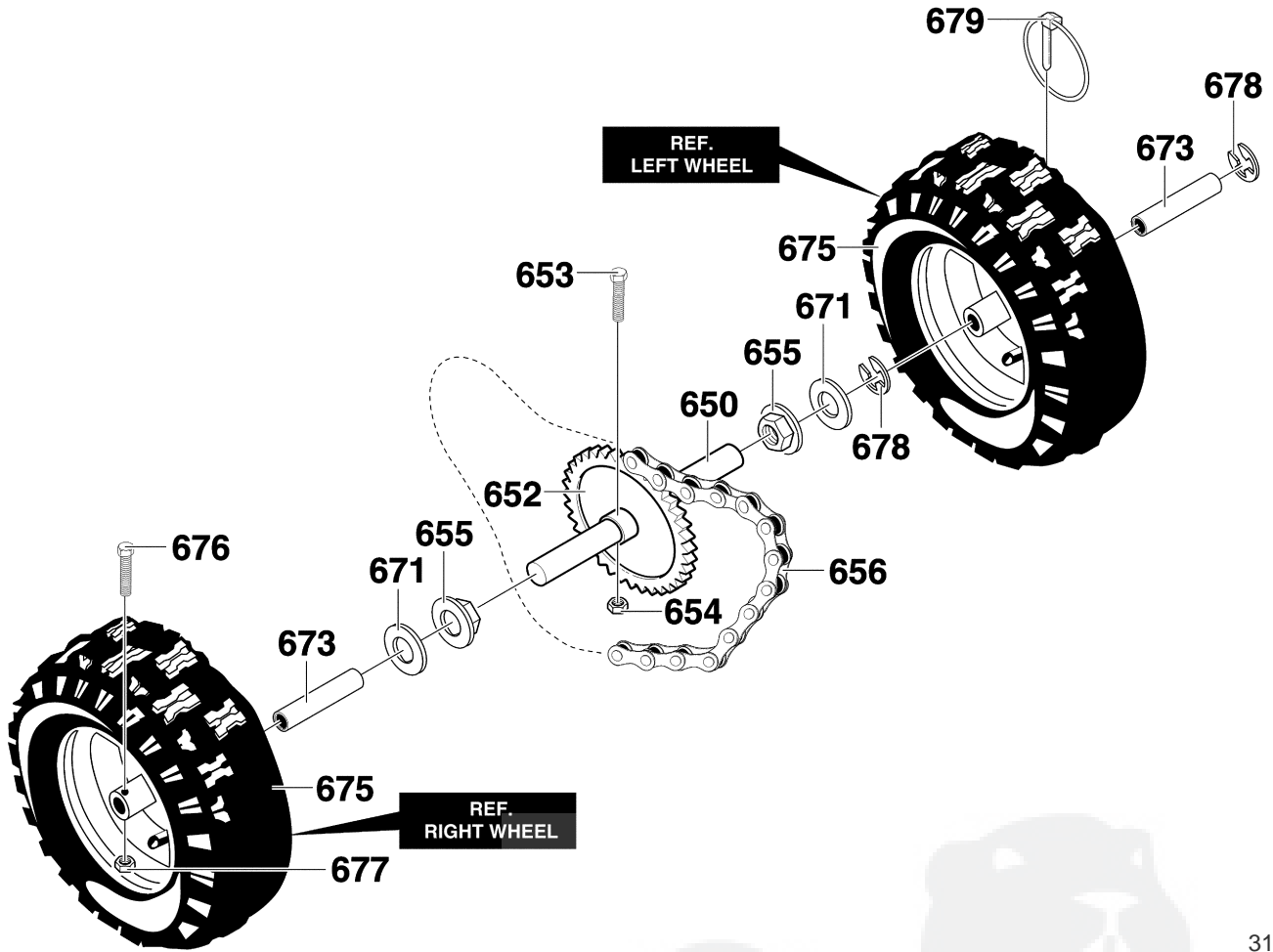


Key No.	Description	Part No.
965	SPRING, TENSION RETURN	318468
966	WASHER, FLAT	711666
967	BOLT, 5/16-18	310088
968	WASHER, FLAT	73787
969	NUT, 1/4-20	302635
970	SCREW, 5/16-18 X .75	313676
971	BRACKET, CABLE CHUTE	780066
972	NUT, 5/16-18	71391
973	TRIM, STRIP, BLACK	55021
974	TIE, CABLE	760113
975	CABLE, CHUTE CONTROL	761131
980	BOLT, 5/16-18	310088
981	WIRE FORM	780220
982	NUT, 1/4-10	302635
990	SCREW, 3/8-16X1.75	4058
991	WASHER, FLAT	71072
992	WASHER, SPRING	4051
993	HANDLE ASSY, SPEED CTRL	579040
994	NUT, 3/8-16 REGHEX	71044
995	HANDLE, 3/8-16 MOLDED TALL	306689
996	NUT, 3/8-16 HEXNYL	71046



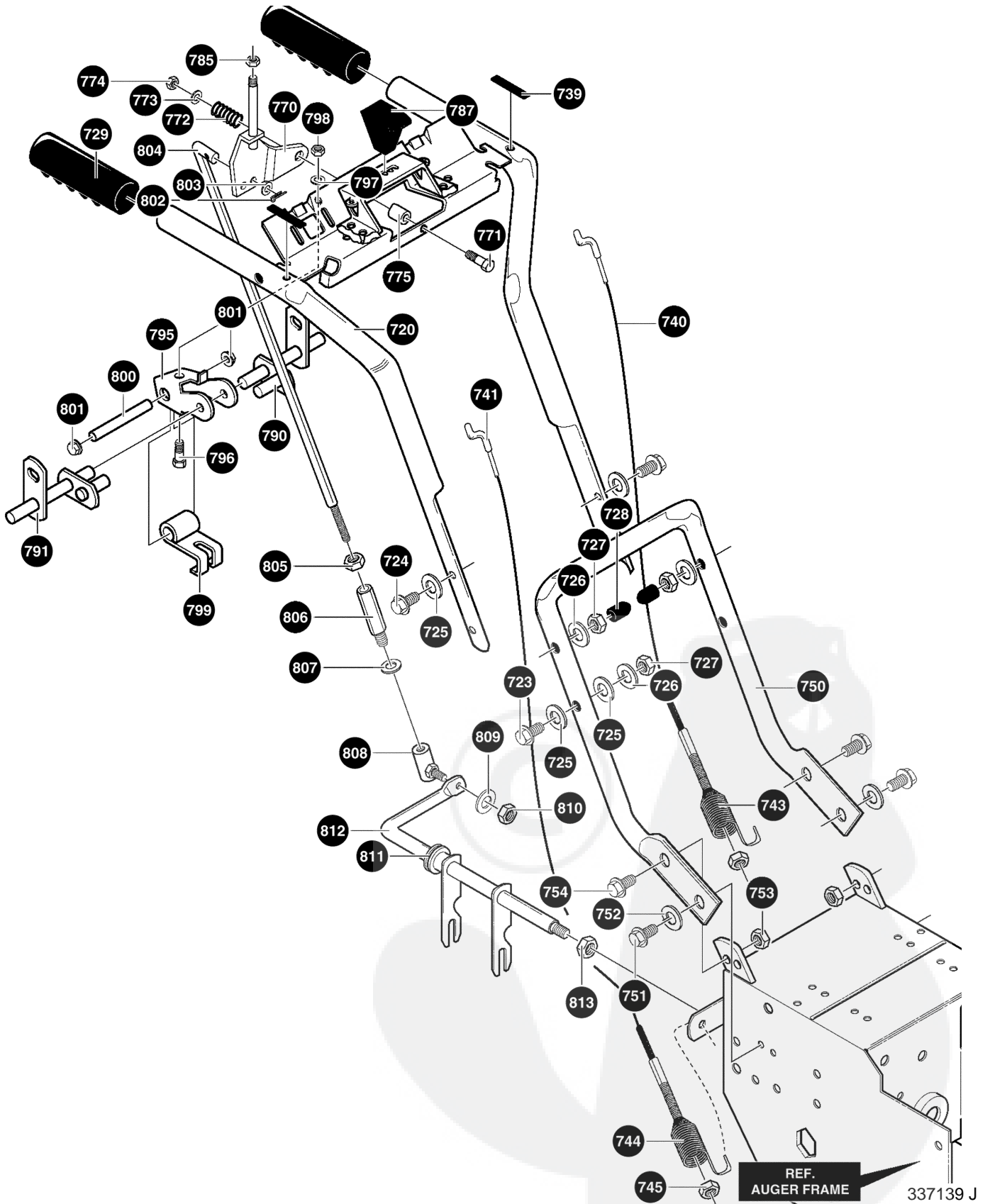
335094

Key No.	Description	Part No.
580	ASSY., UPPER CHUTE	761168-853
582	SCREW, 5/16-18X.75	578088
584	NUT, 5/16-18 HEX NYL	71038
585	SCREW, 5/16-18X.75	578088
586	WASHER	6711
587	NUT, 5/16-18 HEX NYL	71038
600	LOWER CHUTE ASSEMBLY	761169-853
601	BOLT, 5/16-18X1.00	586280
602	FLATWASHER .349X.69X.066	71071
603	NUT, 5/16-18	71038
604	RIVET	762322
605	FLAP	760987
606	COLLAR, CHUTE	585214-821
607	SCREW, 1/4-20X .75	302628
608	FLATWASHER .281X .63X.065	71067
609	NUT, 1/4-20 HEX NYLOCK	780029
610	RETAINER, RING INNER	337227
611	RETAINER, RING OUTER	585193

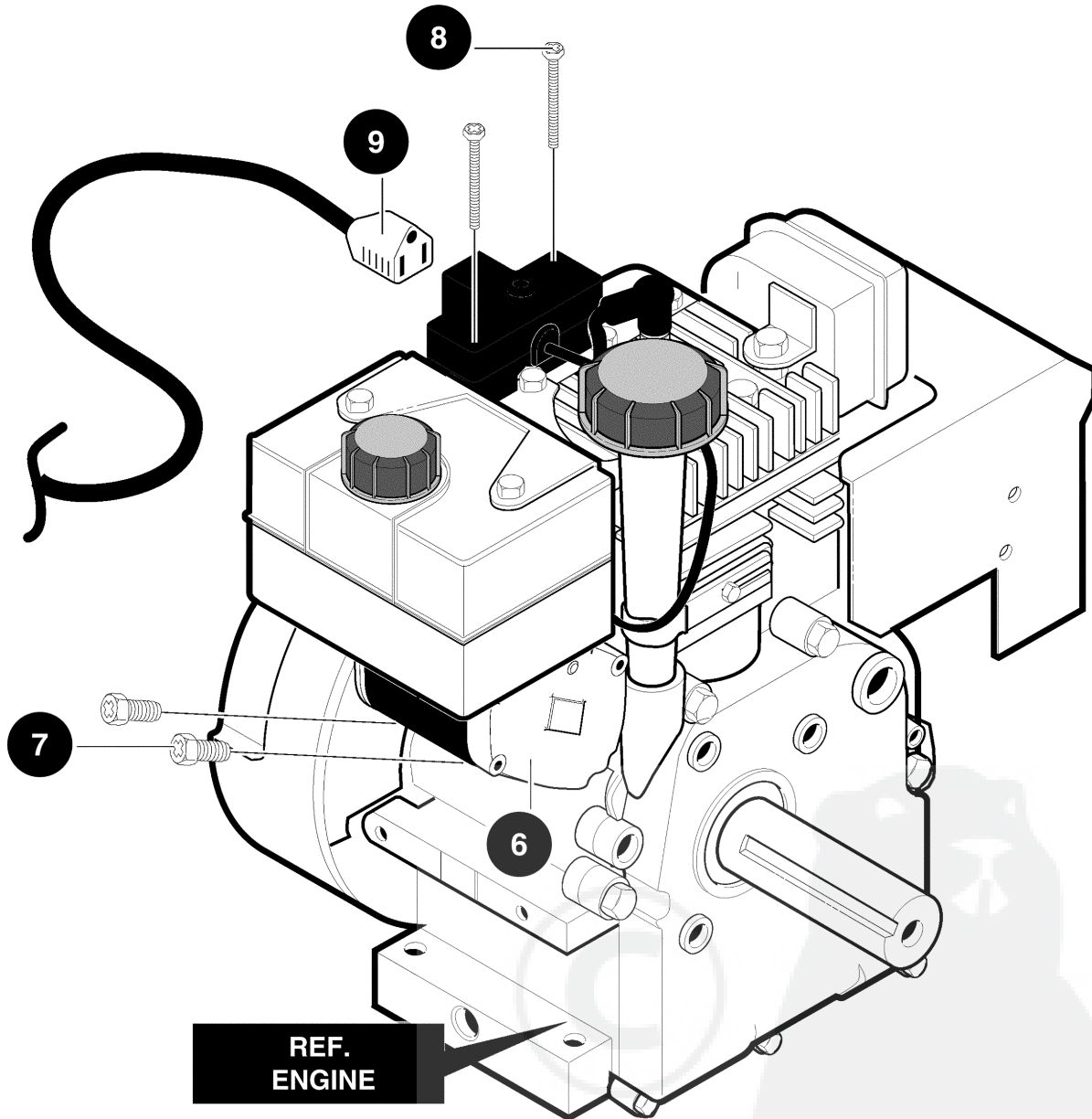


318542

Key No.	Description	Part No.
650	SHAFT, AXLE	583017
652	SPRKT & HUB	583007
653	SCREW, 1/4-20X2.25	73839
654	NUT, 1/4-20 HEX NYLOCK	780029
655	BRNG, FL	581730
656	CHAIN, ROLLER	583013
671	FLATWASHER .765X1.12X.06	712120
673	BUSHING, WHEEL	585591
675	TIRE & RIM	584535
676	SCREW, 1/4-20X1.75 HH	577015
677	NUT, 1/4-20 HEX NYLOCK	780029
678	RING, RET	239
679	PIN, KLIK .25 X 1.38 DIA	73842

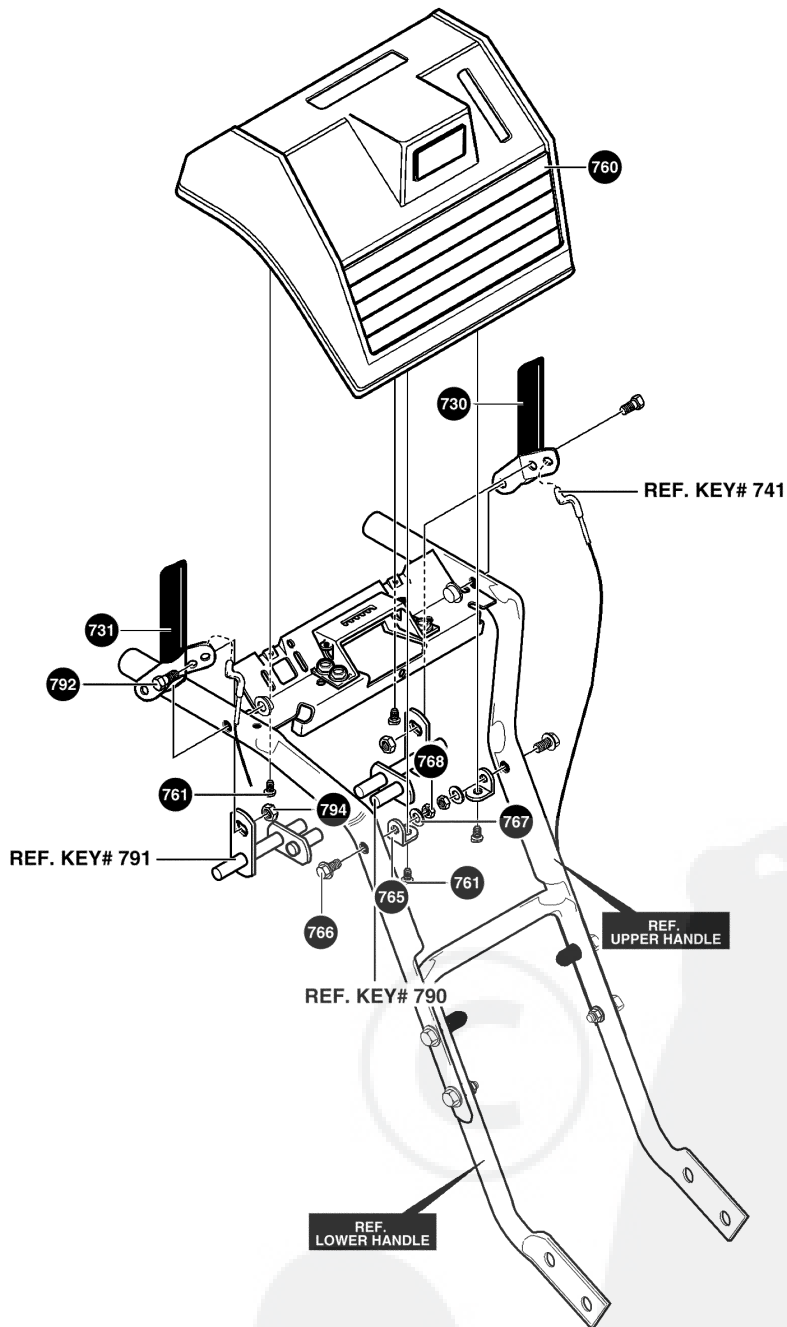


Key No.	Description	Part No.
720	HANDLE, ASSY	760192-853
720	SUPPORT, ASSY HANDLE	760192-853
723	SCREW, 3/8-16X2.00	71007
724	SCREW, 3/8-16X3.00	7288
725	WASHER, FLAT	71072
726	WASHER, MDSPTLK	71062
727	NUT, 3/8-16 REGHEX	71044
728	STOP, PLASTIC	7289
729	GRIP, HANDLE	50792
739	BUMPER, RECT	4049
740	CABLE, CLUTCH 32.19"	1580
741	CABLE, AUG CLUTCH	761591
743	TENSION SPRING	579869
744	SPRING, AUGER CLUTCH	1673
745	NUT, 1/4-20 HEX NYLOCK	780029
750	HANDLE, LOWER	5543-853
751	SCREW, 5/16-18 X .75	70984
752	WASHER, SPTLK	71060
753	NUT, 5/16-18	71391
754	SCREW, 5/16-18 X .75	70984
770	BRKT, SHIFT ACTUATOR	581964
771	SCREW, 3/8-16X3.00	7288
772	SPRING	50786
773	WASHER, FLAT	71072
774	NUT, 3/8-16 HEXNYL	71046
775	SPACER, SHIFT ACTUATOR	579183
785	NUT, 1/4-20 REGHEX	71034
787	KNOB, SHIFT 1/420	585522
790	ROD, ASSY LH	578926
791	ROD, ASSY RH	578924
795	BRACKET, CAM RETAINER	579002
796	SCREW, 5/16-18X.75	313676
797	WASHER, SPTLK	71060
798	NUT, 5/16-18 REGHEX	71037
799	CAM LOCK	8417
800	PIN, SPRING PIVOT	584673
801	NUT, PUSH ON	73664
802	PIN, COTTER	71081
803	FLATWASHER	71071
804	ROD, SPEED CONTROL	581079
805	NUT, 5/16-24 REGHEX	71042
806	ADAPTOR, ROD SPEED	6352
807	WASHER, SPTLK	71060
808	JOINT, STEEL BALL	50782
809	WASHER, SPTLK	71060
810	NUT, 5/16-24 RGHEX	71042
811	BEARING, FL	579944
812	ROD, ASSY YOKE "PANEL"	337436
813	NUT, 38-16 HEXCTRLK	71111



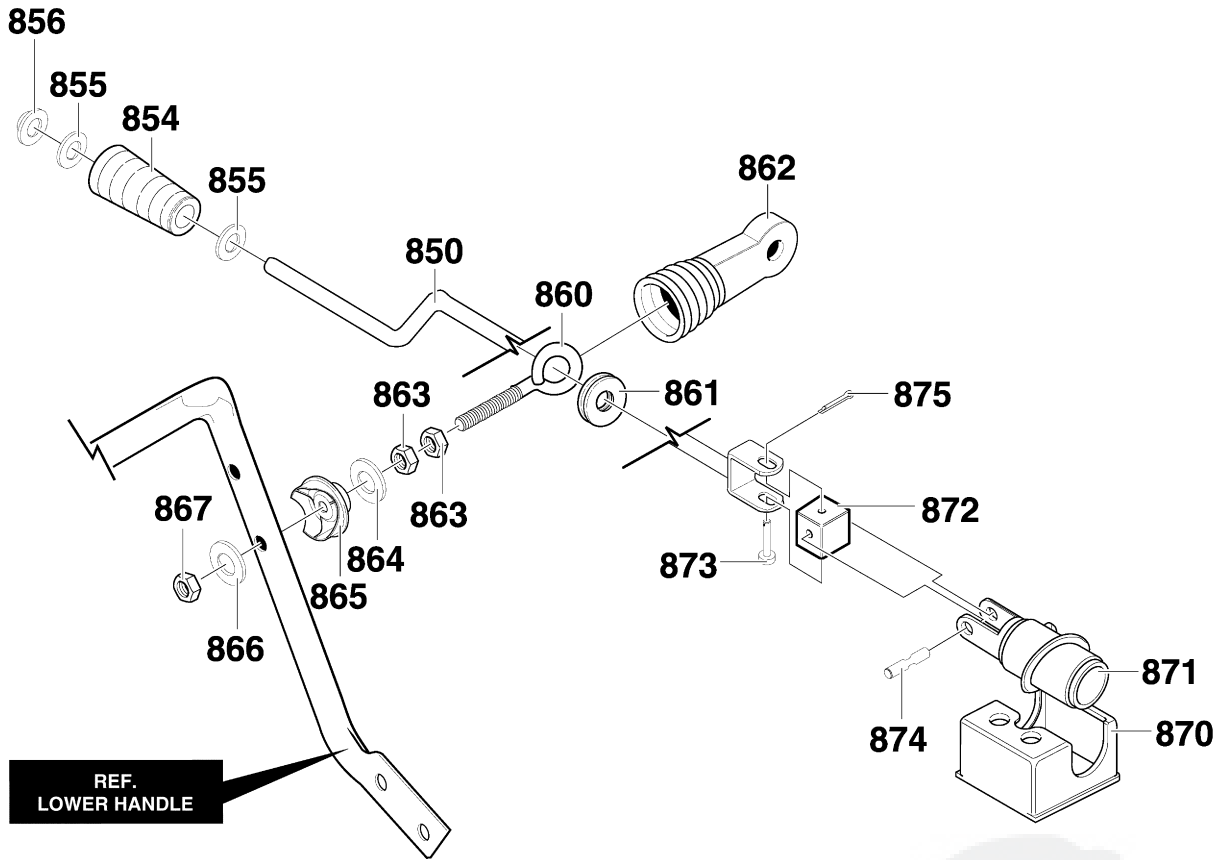
319051

Key No.	Description	Part No.
6	MOTOR, STARTER	762323
7	SCREW	6216
8	SCREW	6217
9	CORD, STARTER	6219



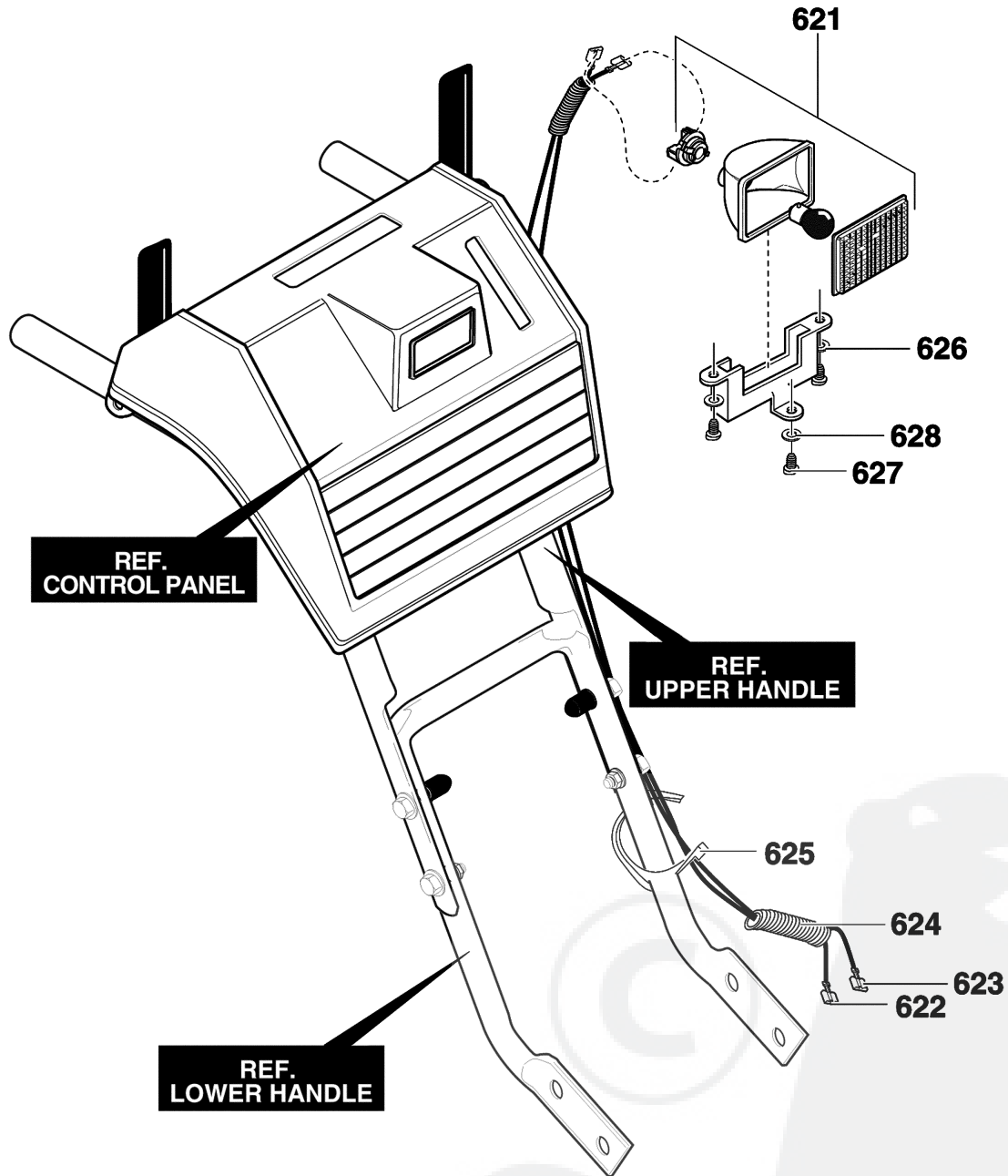
337139 J

Key No.	Description	Part No.
730	CLUTCH HANDLE LH	578992
731	CLUTCH HANDLE RH	578993
760	PANEL	585523
761	SCREW, 10 X .62	316042
765	BRACKET, PANEL	578866-853
766	SCREW, 5/16-18 X 1.75	302900
767	WASHER, HVSP TLK	71060
768	NUT, 5/16-18	71037
792	BOLT, 1/4-20 X .50	905531
794	NUT, 1/4-20	908913



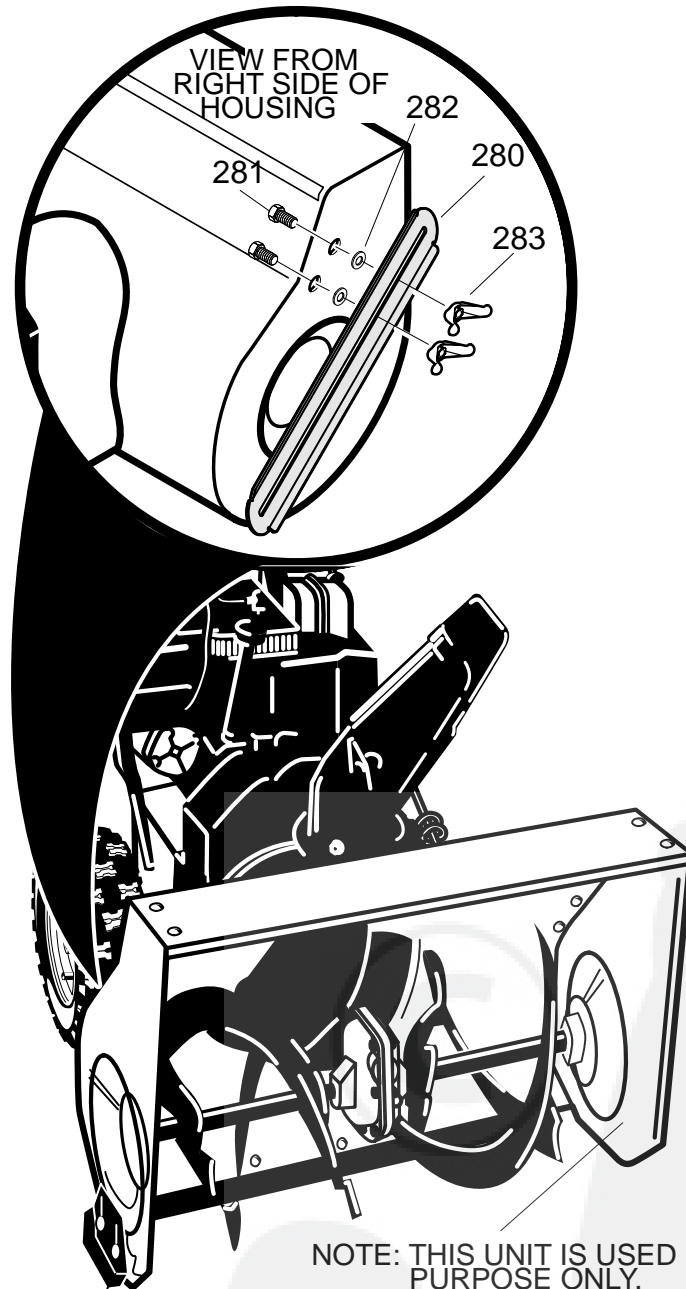
334215

Key No.	Description	Part No.
850	CRANK, ASSY CHUTE	585426
854	HANDLE, CHUTE CRANK	307399
855	FLATWASHER .39X.70X.05	309312
856	E RING	578159
860	EYE BOLT 3/8-16X6.00	581618
861	GROMMET, EYE BOLT	148
862	BOOT	308145
863	NUT, 3/8-16 HEXJAM	71045
864	FLATWASHER .406X.81X.066	71072
865	ADAPTER, BOOT TO HANDLE	309344
866	FLATWASHER .406X.81X.066	71072
867	NUT, 3/8-16 HEXNYL	71046
870	BRACKET, WORM MTG	585195
871	WORM, GEAR CHUTE ROTATION	585196
872	BLOCK, UNIVERSAL PIVOT	578063
873	CLEVIS PIN	578309
874	PIN, UNIVERSAL JOINT	578060
875	COTTER PIN	579493



Key No.	Description	Part No.
621	HEADLIGHT ASSY	581575
622	ASSY, WIRE	305743
623	WIRE, HEADLIGHT GROUND	305740
624	CONDUIT	6636
625	TIE, CABLE	57444
626	BRACKET	578921
627	SCREW #8 X .50	901696
628	WASHER, FLAT	901736

337081



NOTE: THIS UNIT IS USED FOR REFERENCE PURPOSE ONLY.

SD1027

Key No.	Description	Part No.
280	BAR, DRIFT CUTTER	762348-853
281	BOLT, 5/16-18X0.75	340720
282	WASHER	12021
283	WINGNUT	711604