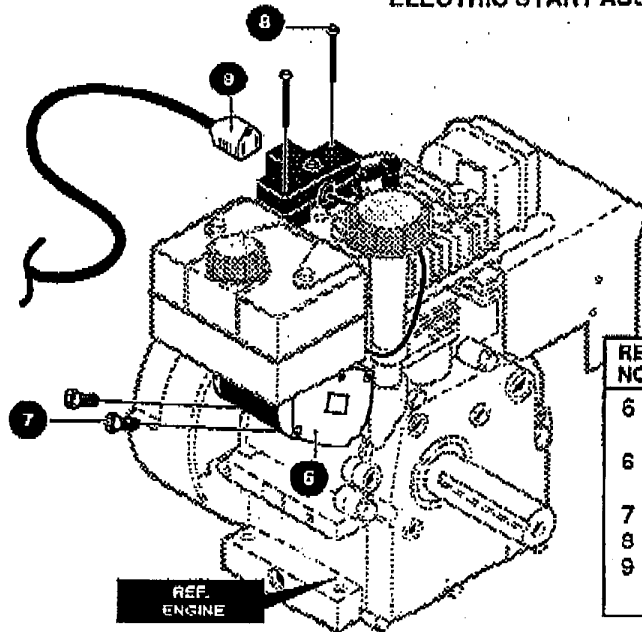


G2794 010

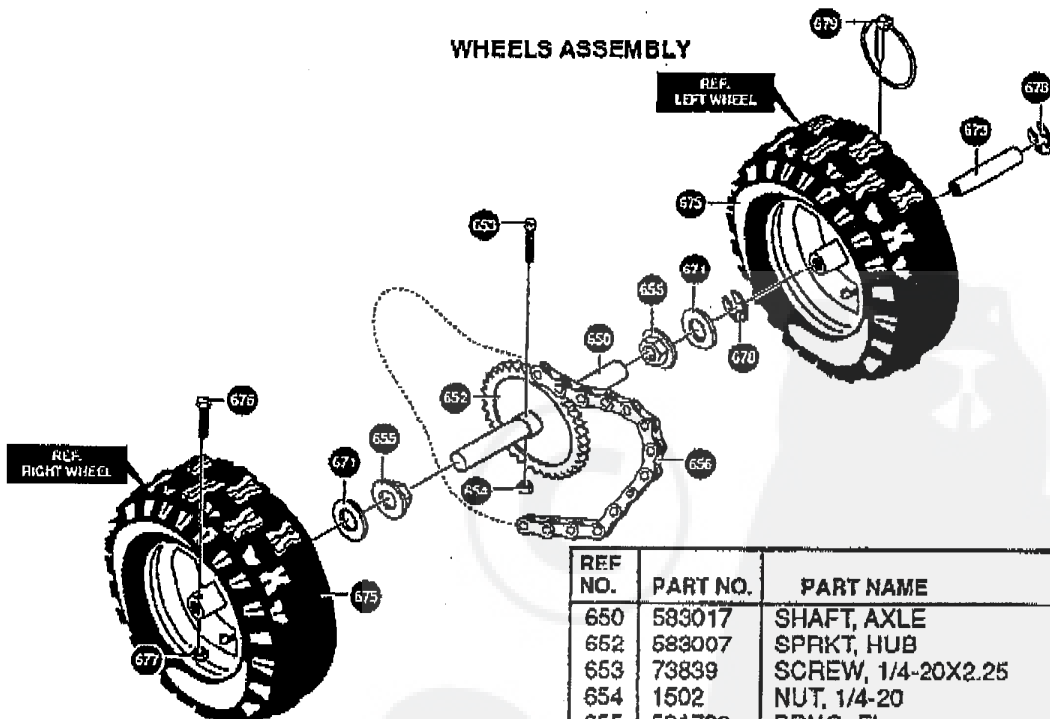
ELECTRIC START ASSEMBLY



REF NO.	PART NO.	PART NAME
6	6218	MOTOR, STARTER FOR 9HP-G2794010
6	337934	MOTOR, STARTER FOR 7HP-G2474010
7	6216	SCREW, 1/4-20X .50
8	6217	CORD, STARTER
9	6219	OWNER'S MANUAL
	760023	

319051 B

WHEELS ASSEMBLY



REF NO.	PART NO.	PART NAME
650	583017	SHAFT, AXLE
662	583007	SPRKT, HUB
653	73839	SCREW, 1/4-20X2.25
654	1502	NUT, 1/4-20
655	581730	BRNG, FL
656	583013	CHAIN, ROLLER
671	73840	FLATWASHER .765X1.12X.06
673	585591	BUSHING, WHEEL
675	580362	TIRE & RIM (G2474010)
675	584535	TIRE & RIM (G2794010)
676	577015	SCREW, 1/4-20X1.75 HH
677	1502	NUT, 1/4-20
678	239	RING, RET
679	73842	PIN, KLIK .25 X 1.36 DIA

Note: Always use original equipment parts. Use of service/replacement parts other than original parts may void your warranty.

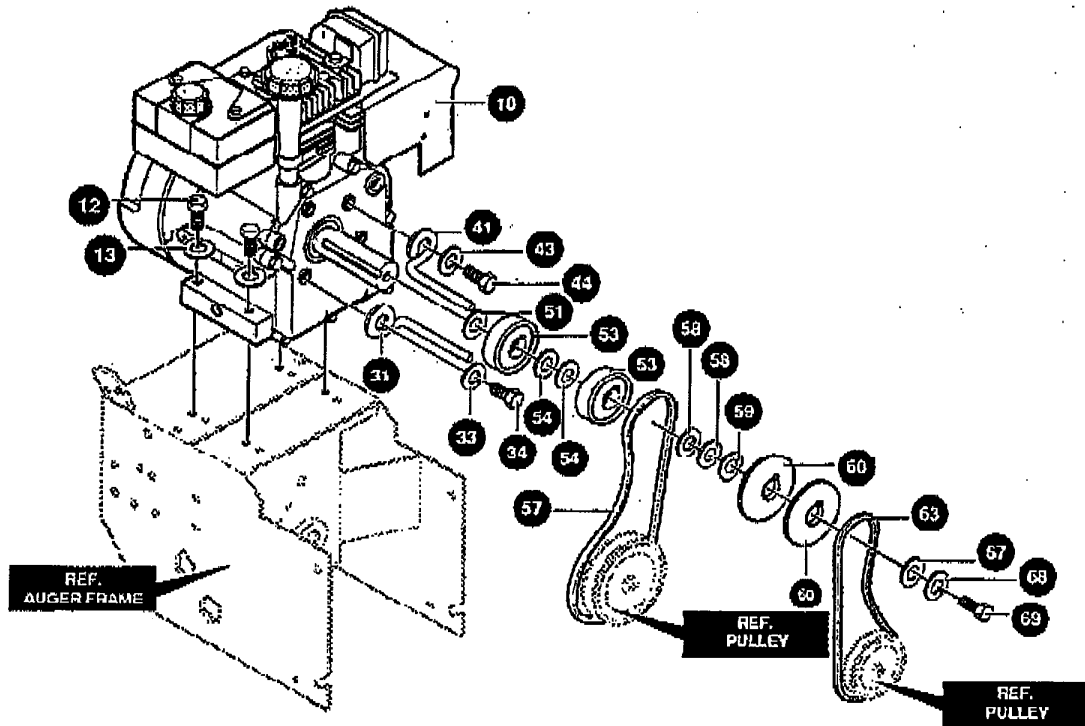
All unnumbered items are interchangeable with opposite side

G2474-010&G2794-010

27

318542E

ENGINE ASSEMBLY FOR 9HP-G2794-010

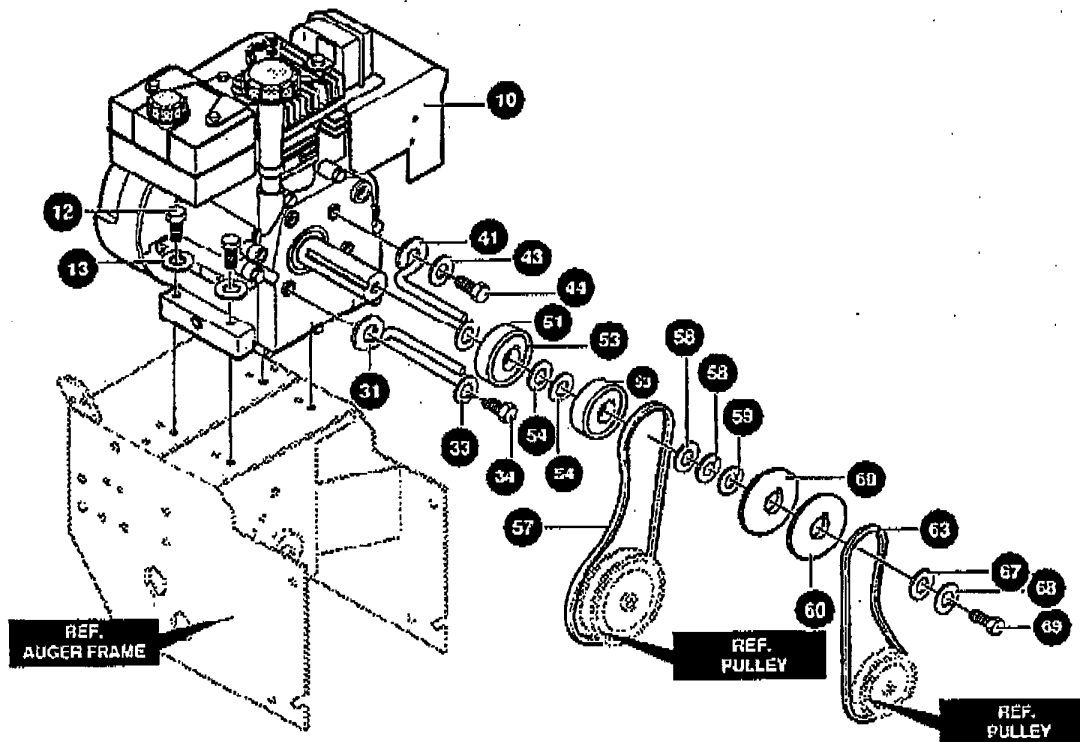


REF NO.	PART NO.	PART NAME
10	-	ENGINE, 9 HP (See Engine Manual)
12	710024	SCREW, 5/16-18
13	120638	WASHER, .328X.60X.09
31	3949	GUIDE, ROD BELT RH
33	120638	WASHER, .328X.60X.09
34	578733	SCREW, 5/16-24X .625
41	3949	GUIDE, ROD BELT RH
43	120638	WASHER, .328X.60X.09
44	578733	SCREW, 5/16-24X .625
51	579855	WASHER, CRANKSHAFT
53	579854	PULLEY, HALF

REF NO.	PART NO.	PART NAME
54	579861	FLATWASHER .752X.91X.02
57	579932	BELT, V SL 33.13LG
58	73840	FLATWASGER .765X1.12X.06
59	586251	SPACER, SLEEVE
60	586253	PULLEY, ENGINE
63	585416	BELT, V 4L 38.1
67	313826	WASHER, FLAT
68	120382	WASHER, .393X.68X.10
69	39573	SCREW, 3/8-24X1.00

319042G

ENGINE ASSEMBLY FOR 7HP-G2474-010

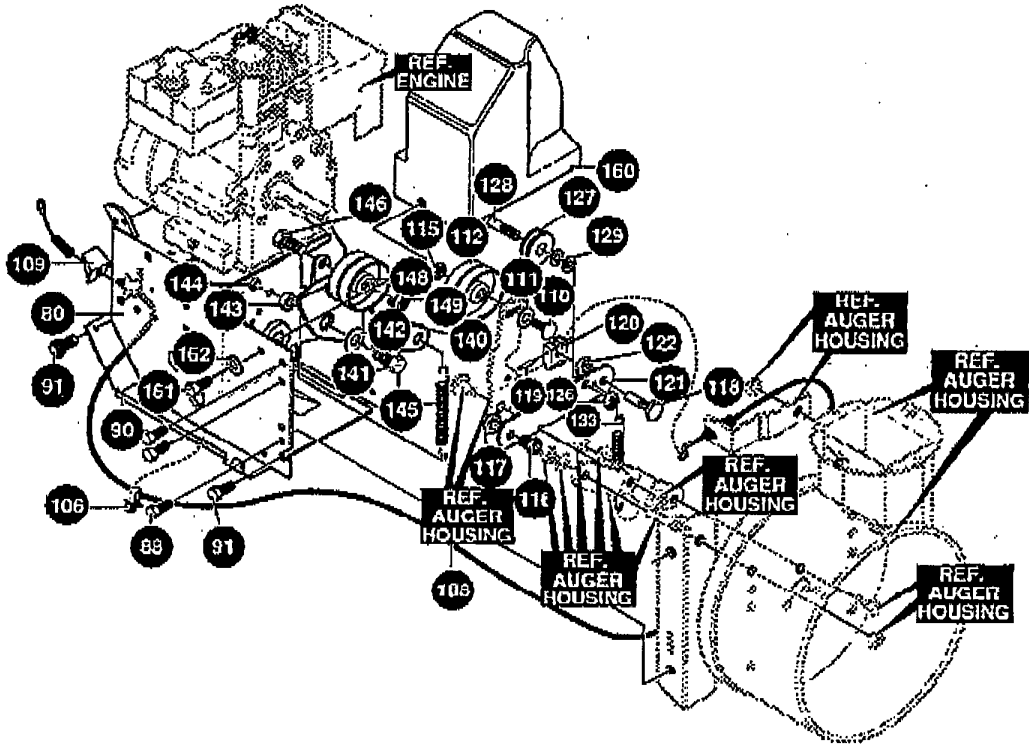


REF NO.	PART NO.	PART NAME
10	-	ENGINE, 7 HP (See Engine Manual)
12	180077	SCREW, 5/16-18X .75
13	120638	WASHER, .328X.60X.09
31	3949	GUIDE, ROD BELT RH
33	120638	WASHER, .328X.60X.09
34	578733	SCREW, 5/16-24X .625
41	3949	GUIDE, ROD BELT RH
43	120638	WASHER, .328X.60X.09
44	578733	SCREW, 5/16-24X .625
51	579855	WASHER, CRANKSHAFT
53	579854	PULLEY, HALF

REF NO.	PART NO.	PART NAME
54	579861	FLATWASHER .752X.91X.02
57	579932	BELT, V 3L 33.13LG
58	73840	FLATWASGER .765X1.12X.06
59	586251	SPACER, SLEEVE
60	586253	PULLEY, ENGINE
63	585416	BELT, V 4L 38.1
67	313826	WASHER, FLAT
68	120382	WASHER, .393X.68X.10
69	39573	SCREW, 3/8-24X1.00

335247B

FRAME COMPONENTS ASSEMBLY

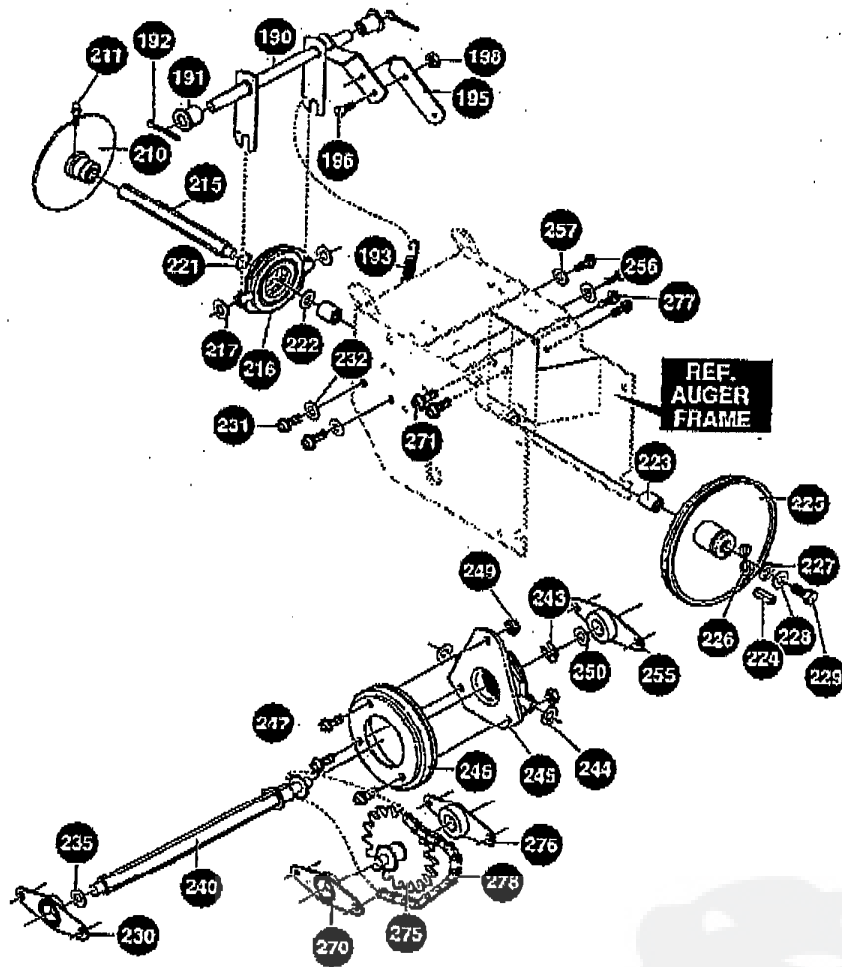


REF NO.	PART NO.	PART NAME
80	340386-898	FRAME, ASSY G2794010
	340578-898	FRAME ASSY G2474010
88	35497	SCREW, 5/16-18X .50
90	583031-830	COVER, BOTTOM
91	310169	SCREW, 1/4-20X .63
106	340682	CLIP, CABLE TINN
108	341024	CABLE, AUGER
109	340869	SHIELD, CABLE GUARD
110	585781	SCREW, 3/8-16X1.25
111	996418	WASHER, FLAT .506X .75X .024
112	313843	PULLEY, IDLER
115	41529	NUT, 3/8-16
116	585470	BOLT, BRAKE ARM
117	585608	NUT, 9/16-18
118	585446	BOLT, BRAKE ARM
119	73801	PIN, SPRING
120	581540	PAD, AUGER BRAKE
121	760072	BRACKET, PUCK
122	585609	NUT, 1/2-20
126	1502	NUT, 1/4-20

REF NO.	PART NO.	PART NAME
127	48306	PULLEY, METAL
128	58336	BOLT, .375X .375 1/4-20
129	120385	WASHER, FLAT .250X .56X .049
133	339017	SPRING, TENSION
140	579872	LEVER, IDLER ARM TRACTION
141	180077	SCREW, 5/16-18X .75
142	73795	FLATWASHER, .328X1.25X.075
143	579865	BUSHING, IDLER LEVER
144	71038	NUT, 5/16-18 HEXNYL
145	313854	IDLER SPRING
146	180124	SCREW, 3/8-16X1.25
148	313843	PULLEY, IDLER
149	41529	NUT, 3/8-16
160	580772	COVER, BELT
161	310169	SCREW, 1/4-20X .63
162	120392	FLATWASHER, .281X .63X.065

340554 F

DRIVE COMPONENTS ASSEMBLY



REF NO.	PART NO.	PART NAME
190	579941	LEVER, ASSY TRACTION
191	313853	BEARING, FLANGE
192	137185	PIN, COTTER
193	313919	SPRING, RETURN
195	579937	LEVER, SPRING
196	11871	SCREW, 1/4-20X .63
198	1502	NUT, 1/4-20
210	583163-830	DISC, ASSY
211	503206	ZERK, GREASE
215	583155	SHAFT, HEX TRACTION
216	85501	BEARING, TRUNION
217	71074	FLATWASHER, .53 X1.00X.063
221	73811	RING, RETEX
222	580969	FLATWASHER, .680X1.12X.060
223	43836	BEARING, BALL
224	580970	KEY, SQUARE
225	580961	PULLEY, V3L 6.50X .56
226	580965	WASHER, WAVE
227	1084	FLATWASHER, .281X1.00X.063
228	120380	WASHER, .263X.49X.07
229	180020	SCREW, 1/4-20X .75 HHC

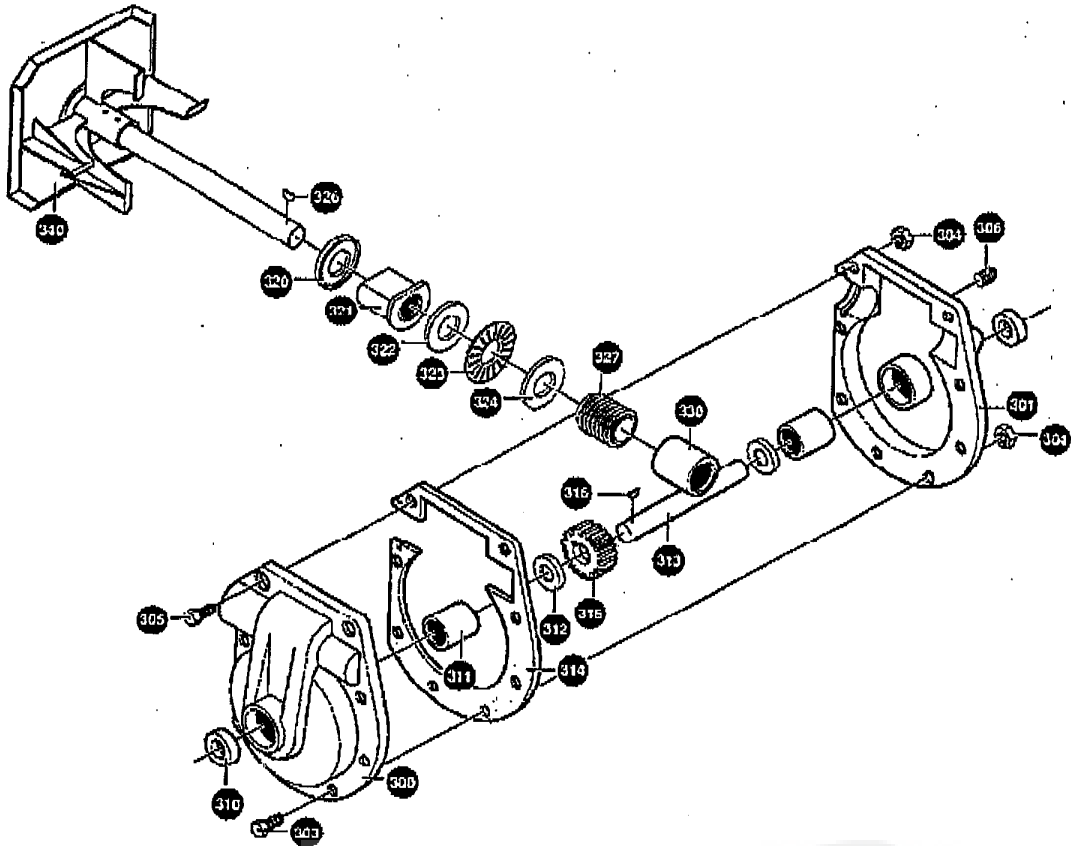
REF NO.	PART NO.	PART NAME
230	334163	BEARING & RETAINER
231	35497	SCREW, 5/16-18X .50
232	120638	WASHER, .328X.60X.09
235	579858	WASHER, .502X .75X.0605
240	579897	HEX, ASSY#40-6T
243	462	RING, RETEX
244	71074	FLATWASHER, .53 X1.00X.063
245	337029	BEARING, TRUNION
246	313883	WHEEL, ASSY FRICTION
247	11871	SCREW, 1/4-20X .63
249	303008	NUT, 1/4-20 HEXKEPS
250	579858	WASHER, .502X .75X.0605
255	334163	BEARING & RETAINER
256	35497	SCREW, 5/16-18X .50
257	120638	WASHER, .328X.60X.09
270	334163	BEARING & RETAINER
271	35497	SCREW, 5/16-18X .50
275	583010	JACK, ASSY#41-36T&7T
276	334163	BEARING & RETAINER
277	35497	SCREW, 5/16-18X .50
278	579867	CHAIN, ROLLER #42 X 40P

G2474-010&G2794-010

31

313995 |

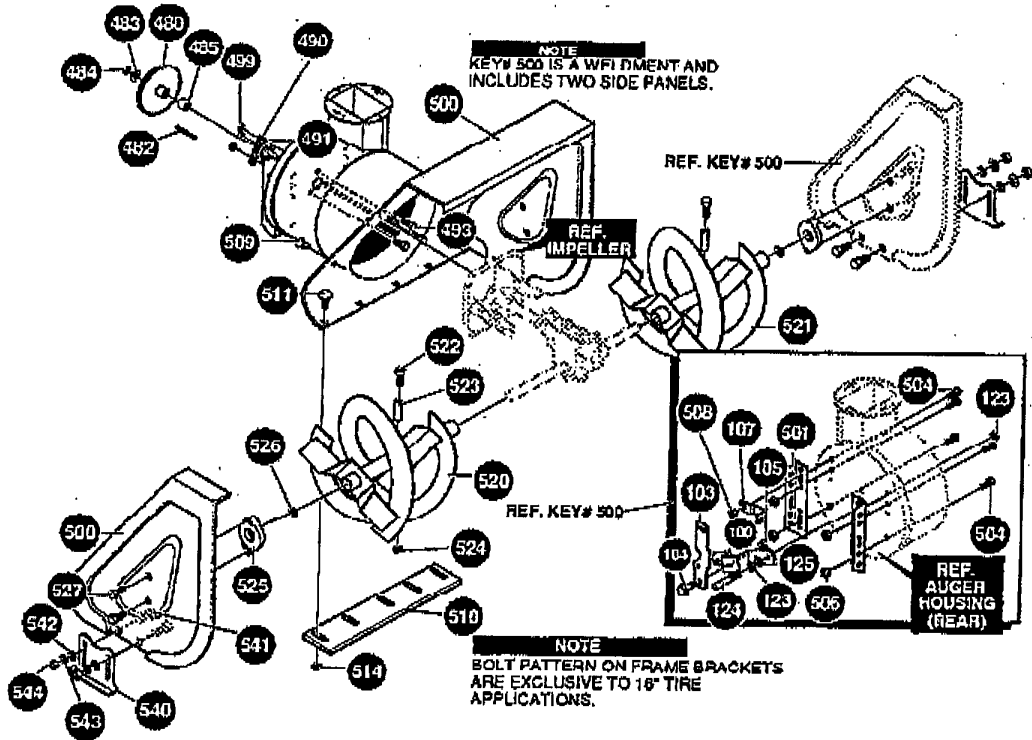
GEAR CASE ASSEMBLY



REF NO.	PART NO.	PART NAME	REF NO.	PART NO.	PART NAME
300	896	CASE, GEAR RH	316	73905	KEY, WDRF
301	895	CASE, GEAR LH	320	313914	RING, QUAD
303	910828	SCREW, 5/16-24X1.00	321	583126	BEARING, FLANGE
304	71100	NUT, 5/16-24	322	9346	FLATWASHER 752X1.24X.093
305	330434	SCREW, 5/16-24X1.50	323	313828	BRNG, ROLL
306	313872	PIPE PLUG	324	9346	FLATWASHER .752X1.24X.093
310	1065	SEAL, OIL	326	50795	KEY, HI-PRO
311	313870	BEARING, SLEEVE	327	313862	WORM GEAR
312	313871	WASHER, FLAT	330	53731	BRNG, SLEV
313	584513	SHAFT, AUGER, G2794010	340	585423-830	IMPELLER, ASSY
	584512	SHAFT, AUGER, G2474010			
314	897	GASKET, GEAR BOX			
315	313861	WORM GEAR			

314014D

AUGER HOUSING ASSEMBLY

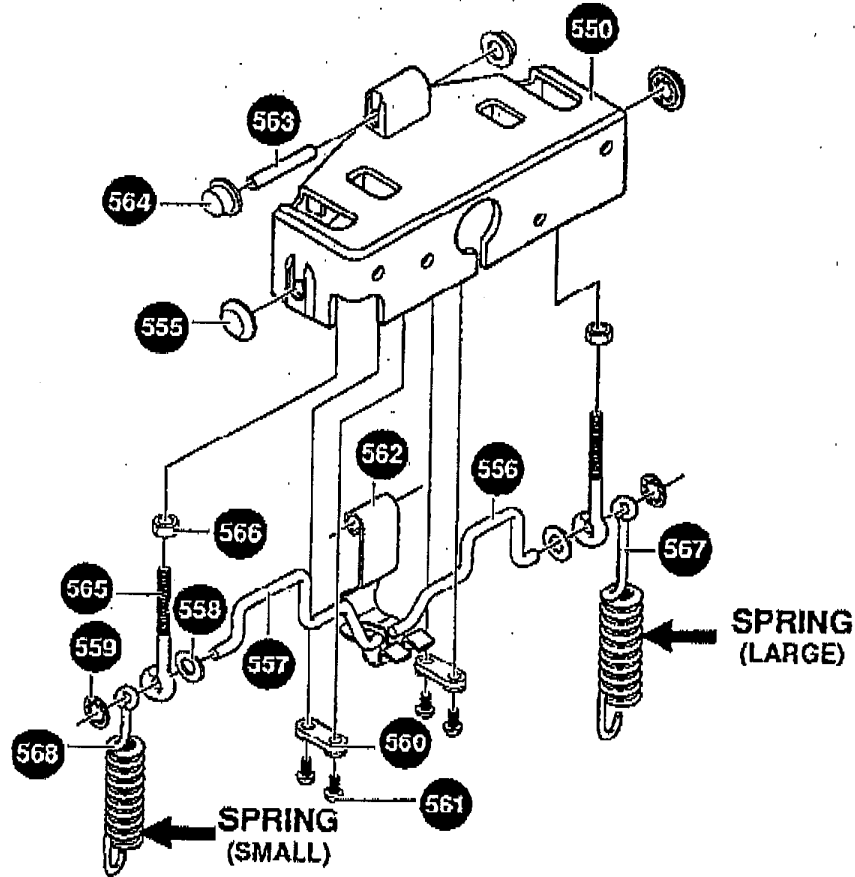


REF NO.	PART NO.	PART NAME	REF NO.	PART NO.	PART NAME
480	583146	PULLEY, V4L 8.40 OD	510	583035-830	SCRAPER BLADE G2794010
482	71371	KEY, SQUARE		578147-830	SCRAPER BLADE G2474010
483	71074	FLATWASHER .53 X1.00X.063	511	70993	BOLT, 5/16-18X .75
			514	710026	NUT, 5/16-18 WHIZ
484	274654	NUT, 1/2-20	520	339899-830	AUGER, ASSY LH G2794010
485	334514	SPACER, SLEEVE		339895-830	AUGER, ASSY RH G2474010
490	582960	RETAINER, BALL	521	339900-830	AUGER, ASSY RH G2794010
491	43846	BEARING, BALL		339897-830	AUGER, ASSY RH G2474010
493	180077	SCREW, 5/16-18X .75	522	9524	SCREW, 1/4-20X1.75
497	120638	WASHER, .328X.60X.09	523	3943	SPACER, SLEEVE
499	710026	NUT, 5/16-18	524	1502	NUT, 1/4-20
500	339867-898	HOUSING, ASSY, G2794010	525	313873	AUGER SHAFT BEARING
	339859-898	HOUSING, ASSY, G2474010	526	73755	FLATWASHER 1.005X1.31X.035
100	336657	PLATE, CLUTCH ARM MT	527	35498	SCREW, 5/16-18X .75
103	760073	BRACKET, IDLER	540	50643-830	SKID, HEIGHT ADJUST
104	335587	SH. BOLT 3/8-16	541	70993	BOLT, 5/16-18X .75
105	1499	NUT, 3/8-16 RGHXCTRLK	542	120393	FLATWASHER .344X .89X.065
107	340353	BRACKET, CABLE MT			
123	1499	NUT, 3/8-16 RGHXCTRLK	543	120638	WASHER, .328X.60X.09
124	586224	STUD, BRAKE ARM	544	120376	NUT, 5/16-18 REGHEX
125	120382	WASHER, HVSPTLK			
501	585247	BRACKET, MOUNT			
504	71003	SCREW, 3/8-16X .75 HHC			
506	1499	NUT, 3/8-16 REGHXCTRLK			
508	1499	NUT, 3/8-16			
509	760040	PLUG, CHRISTMAS TREE			

339974 I

G2474-010&G2794-010

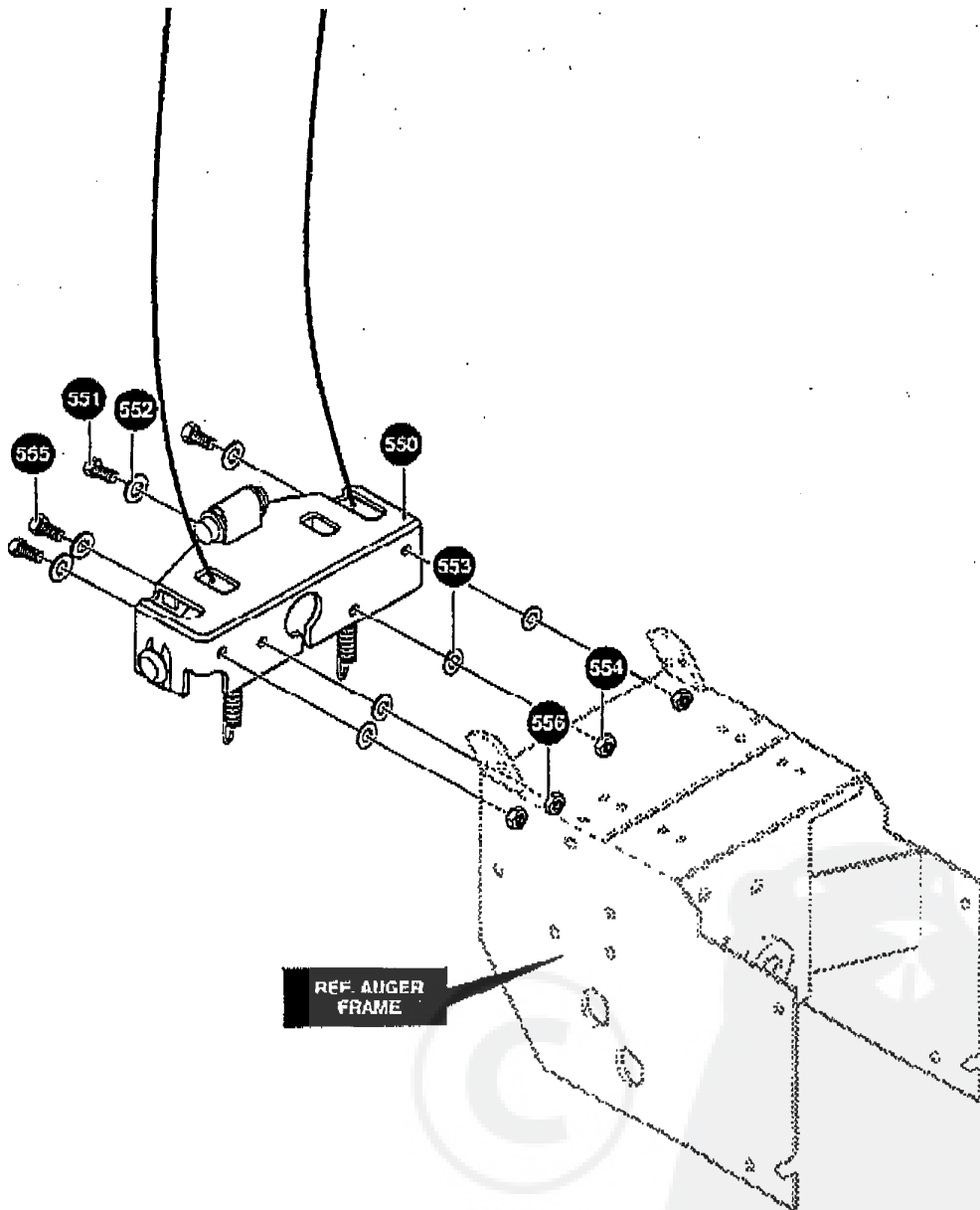
SINGLE HAND CONTROL ASSEMBLY



REF NO.	PART NO.	PART NAME
550	584635	HOUSING, SINGL F HAND
555	3535	NUT, PUSH ON CAP .312 OD
556	584723	CAM/LATCH, LH
557	584724	CAM/LATCH, RH
558	120393	WASHER, FLAT .344X .69X.065
559	519	RING, RETEX . X. TRU5115-31
560	585544	CLAMP, SHC CAM FRAME MOUNTED
561	584672	SCREW, #8X.75PANTAPPLAST
562	8417	CAM LOCK
563	584673	PIN, SPHING PIVOT SHC
564	73664	NUT, PUSH ON 3/8"
565	584748	BOLT, EYE
566	120361	NUT, #10-24 REGH
567	339903	SPRING, AUGER CLUTCH
568	339904	SPRING, DRIVE CLUTCH

337446 B

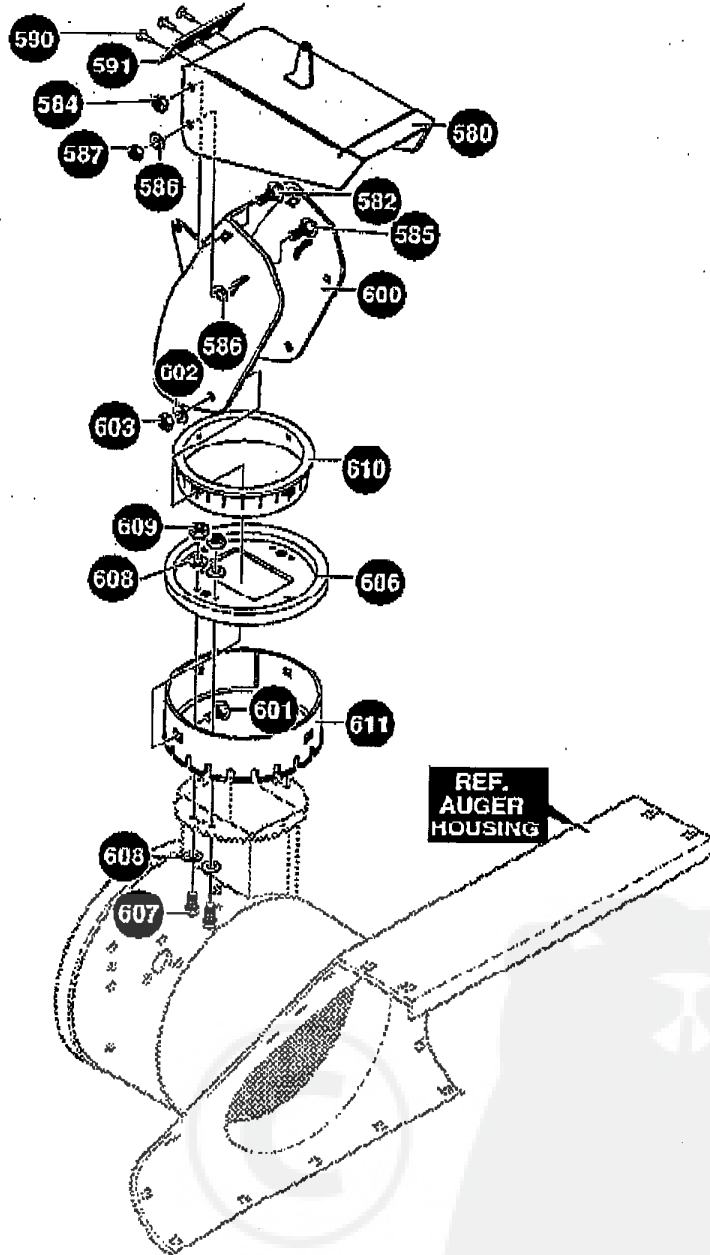
SINGLE HAND CONTROL ASSEMBLY



REF NO.	PART NO.	PART NAME
550	337444	CONTROL, ASSY SINGLE HAND
551	180077	SCREW, 5/16-18X .75 HHC
552	120393	WASHER, FLAT .344X .69X.065
553	120638	WASHER, HVSP TLK .328X.60X.09
554	120376	NUT, 5/16-18 REGHEX
555	910828	SCREW, 5/16-24X1.00 HHC
556	71100	NUT, 5/16-24 HEXWDFLLK

334072E

DISCHARGE CHUTE ASSEMBLY

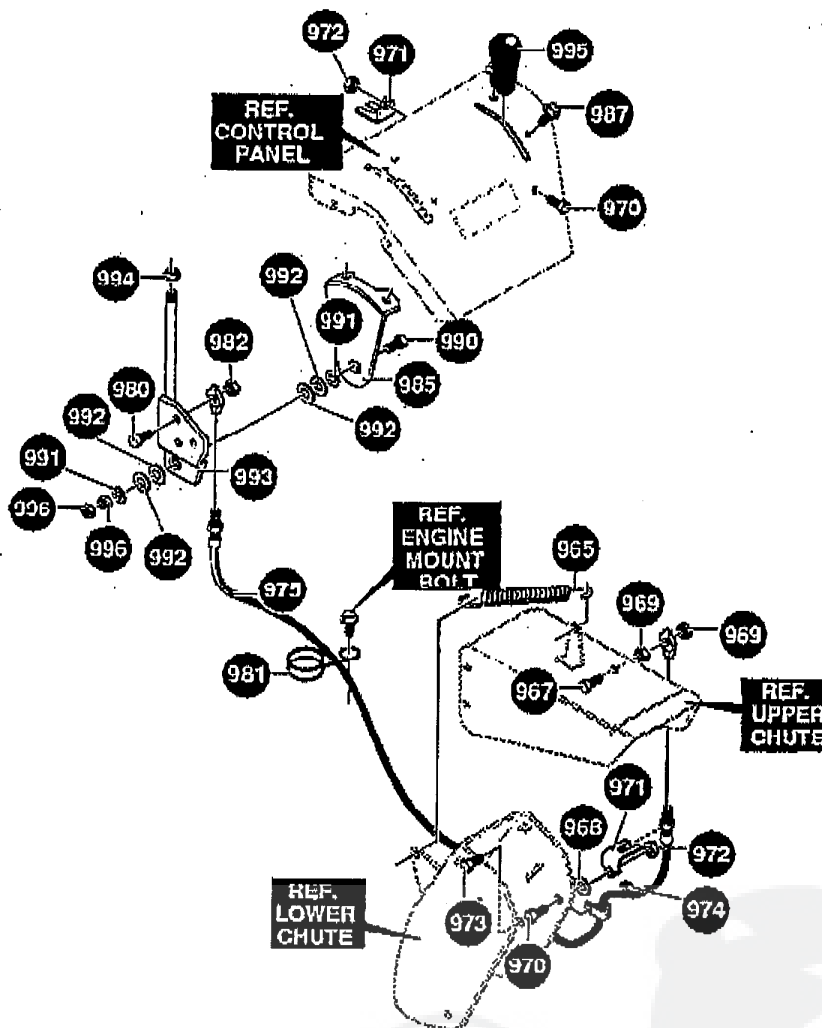


REF NO.	PART NO.	PART NAME
580	904040-830	CHUTE, UPPER
582	578088	SCREW, 5/16-18X .75
584	71038	NUT, 5/16-18 NYLON
585	578088	SCREW, 5/16-18X .75
586	6711	WASHER, PLASTIC
587	71038	NUT, 5/16-18 NYLON
590	328683	POP RIVET
591	3194	SKIRT, CHUTE EXT.
600	4036	CHUTE, LOWER
601	586280	BOLT, 5/16-18X1.00

REF NO.	PART NO.	PART NAME
602	120393	FLATWASHER .344X .69X.065
603	71038	NUT, 5/16-18
606	585214-830	COLLAR, CHUTE
607	180020	SCREW, 1/4-20X .75
608	120392	FLATWASHER .281X .63X.065
609	1502	NUT, 1/4-20
610	337227	RETAINER, RING INNER
611	585193	RETAINER, RING OUTER

337609E-1

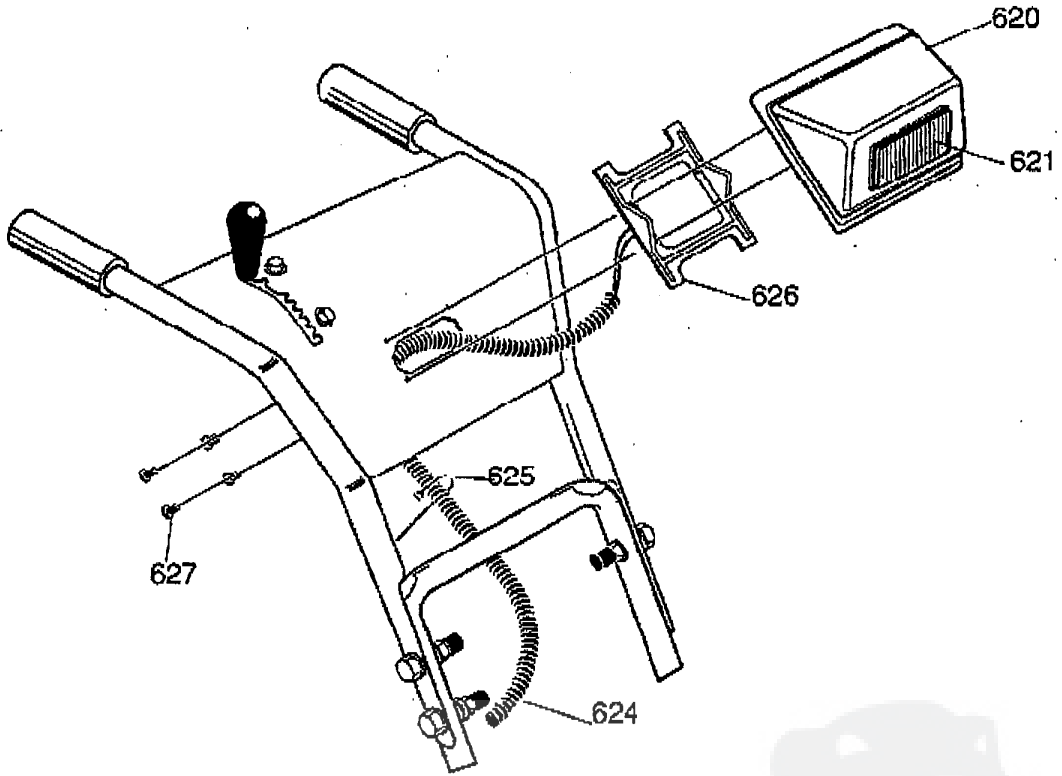
DISCHARGE CHUTE ASSEMBLY



REF NO.	PART NO.	PART NAME	REF NO.	PART NO.	PART NAME
965	903519	SPRING, TENSION	981	904135	WIRE, FORM
967	56934	SCREW, 1/4-20 X 1.00	982	1502	NUT, 1/4-20
968	120393	WASHER, FLAT .349X.60X.065	985	985122	BRACKET
969	1502	NUT, 1/4-20	987	35497	SCREW, 5/16-18X .50
970	180077	SCREW, 5/16-18 X .75	990	122168	SCREW, 3/8-16 X 1.75
971	904173	BRACKET, CABLE CHUTE	991	120394	WASHER, FLAT .406X .81 X.065
972	1498	NUT, 5/16-18	992	4051	WASHER, SPRING
973	35258	SCREW, 10-24X .38	993	85031	HANDLE ASSY
974	71055	NUT, #10-24 HEXNYLLK	994	1499	NUT, 3/8-16
975	904052	CABLE, CHUTE CONTROL	995	304728	HANDLE
980	180020	SCREW, 1/4-20X .75	996	71046	NUT, 3/8-16 HEXNYL

337609E-2

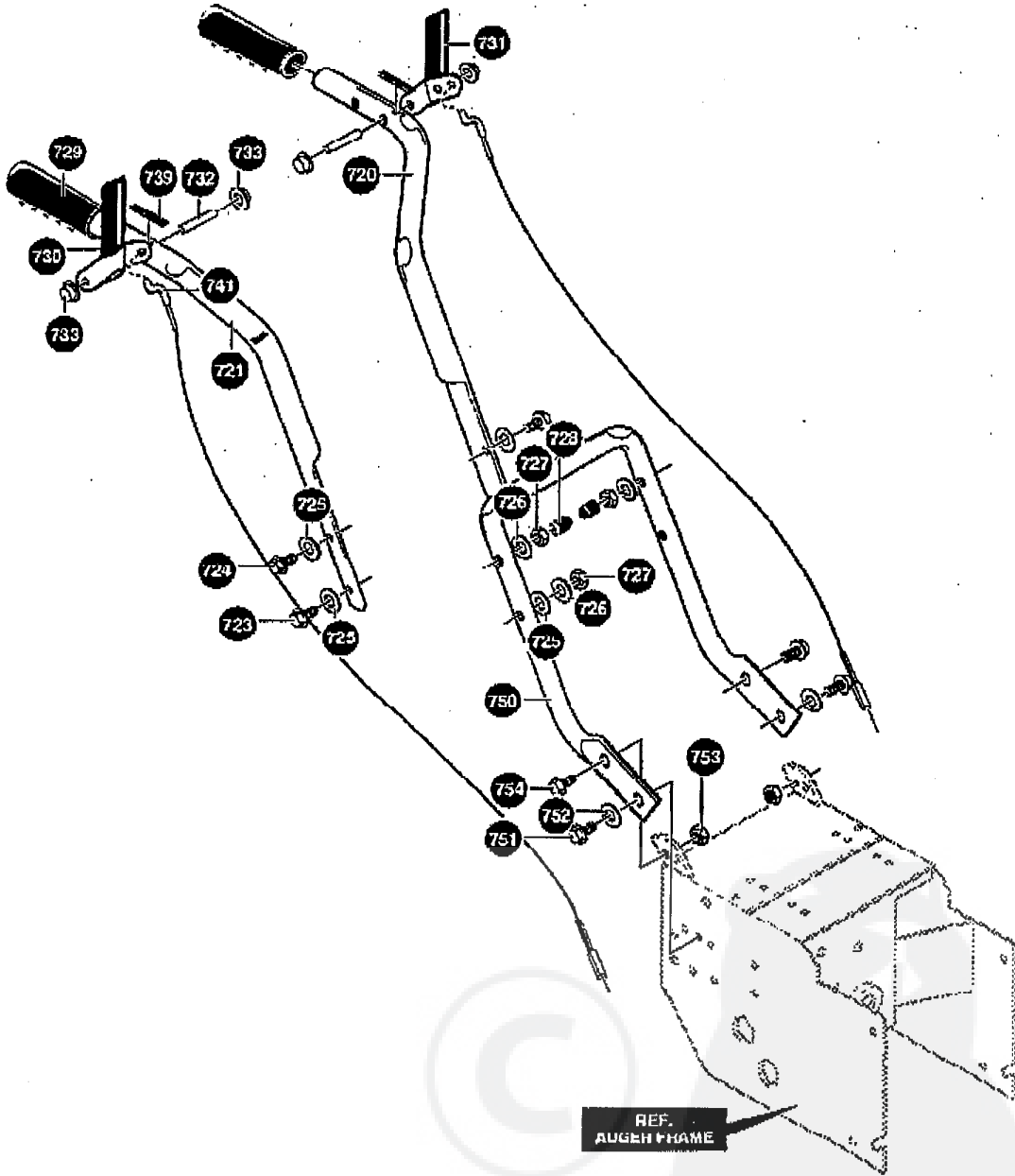
LIGHT PANEL ASSEMBLY



REF NO.	PART NO.	PART NAME
620	584731	HOUSING, LIGHT
621	581575	HEADLIGHT ASSY
624	331712	ASSY, HEADLIGHT WIRE HARNESS
625	57444	CABLE TIE
626	584732	BRACKET, PANEL
627	316042	SCREW, 10X.62

334082A

HANDLE ASSEMBLY



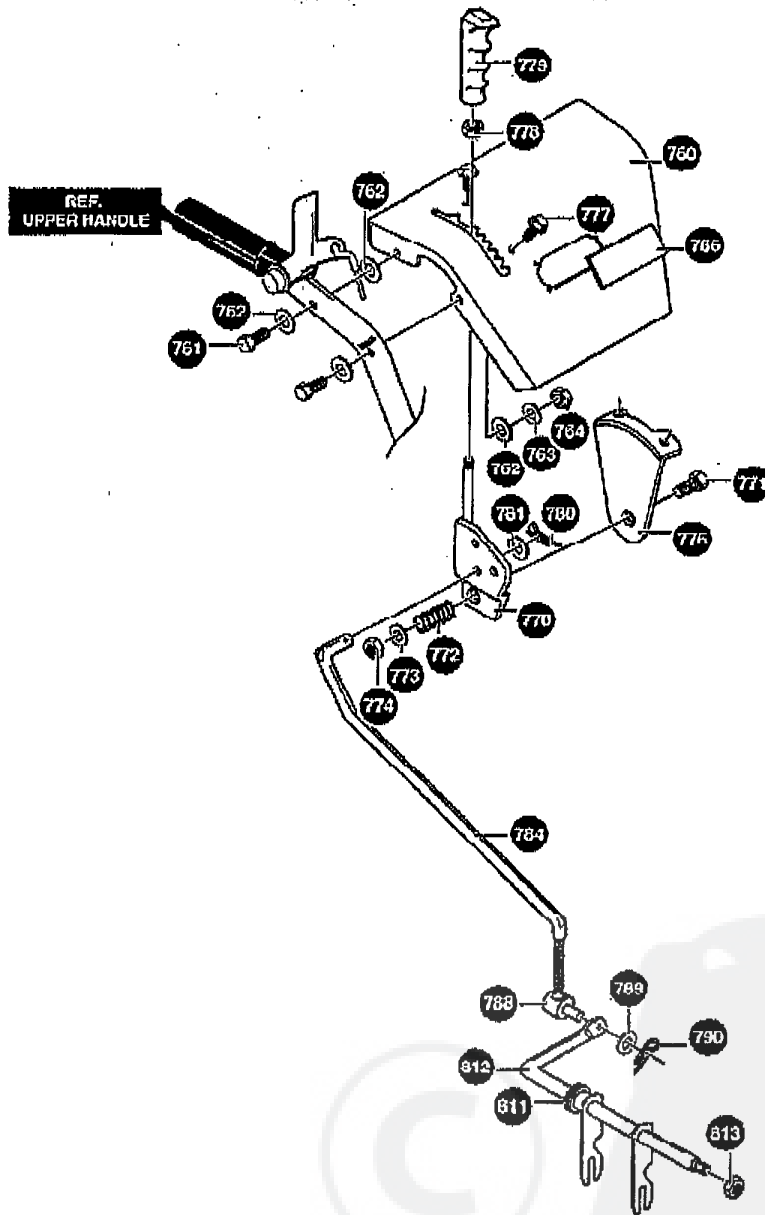
REF NO.	PART NO.	PART NAME	REF NO.	PART NO.	PART NAME
720	5113-830	HANDLE, UPPER LH	731	9731	HANDLE, ASSY CL LH
721	5115-830	HANDLE, UPPER RH	732	1058	PIN, PIVOT
723	71007	SCREW, 3/8-16X2.00	733	3535	NUT, PUSH ON CAP
724	7288	SCREW, 3/8-16X3.00	739	4049	BUMPER, RECT
725	120394	WASHER, FLAT .406X .81X.065	741	584747	CABLE, CLUTCH
726	120382	WASHER, .393X.68X.10	750	5543-830	HANDLE, LOWER
727	1499	NUT, 3/8-16	751	35498	SCREW, 5/16-18X .75
728	7289	STOP, PLASTIC	752	120638	WASHER
729	50792	GRIP, HANDLE	753	1498	NUT, 5/16-18
730	909734	HANDLE-CLUTCH	754	35498	SCREW, 5/16-18X .75

334394 E

G2474-010&G2794-010

39

CONTROL PANEL ASSEMBLY

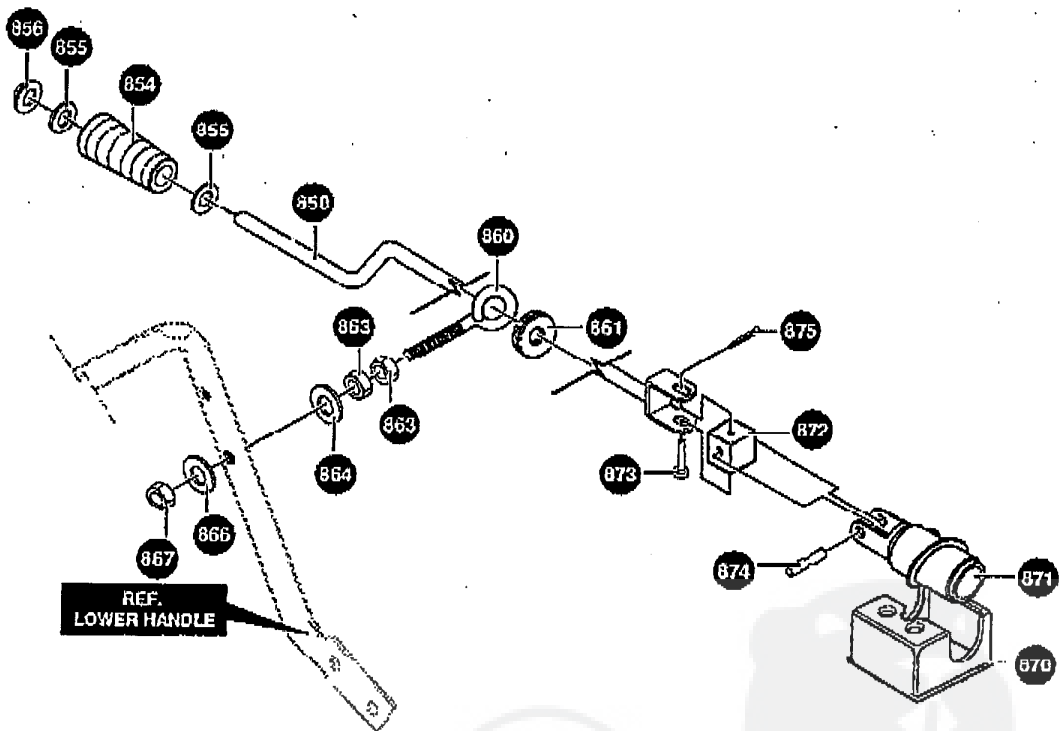


REF NO.	PART NO.	PART NAME
760	585864-898	PANEL, CONTROL
761	302900	SCREW, 5/16-18X1.75 HHC
762	120393	WASHER, FLAT .344X .69X.065
763	120638	WASHER, .328X.60X.09
764	120376	NUT, 5/16-18 REGHFX
766	-	NOT USED THESE UNITS
770	85031	HANDLE, ASSY
771	71007	SCREW, 3/8-16X2.00
772	313842	SPRING
773	120394	WASHER, FLAT .406X .81X.065
774	71046	NUT, 3/8-16
776	50783	BRACKET, SPEED CTRL

REF NO.	PART NO.	PART NAME
777	35497	SCREW, 5/16-18X .50
778	1499	NUT, 3/8-16
779	304728	HANDLE 3/8-16
780	121222	PIN, COTTER
781	120393	WASHER, FLAT
784	330635	ROD, SPEED CONTROL
788	584593	NUT, TRUNNION
789	120393	WASHER, FLAT .344X .69X.065
790	121222	PIN, COTTER
811	579944	BEARING, FLANGE
812	337436	ROD, ASSY
813	1499	NUT, 3/8-16

319052 H

CHUTE CRANK ASSEMBLY



REF NO.	PART NO.	PART NAME
850	585426	CRANK, ASSY
854	313849	KNOB, SLEEVE
855	120394	WASHER, FLAT .406X .81X.065
856	73664	NUT, PUSH ON 3/8"
860	71457	BOLT, EYE
861	148	GROMMET, EYE BOLT
863	124829	NUT, 3/8 16
864	120394	WASHER, FLAT .406X .81X.065

REF NO.	PART NO.	PART NAME
866	120394	WASHER, FLAT .406X .81X.065
867	71046	NUT, 3/8-16
870	585195	BRKT, WORM
871	585196	WORM, GEAR CHUTE
872	578063	BLOCK, UNIV PIV
873	578309	PIN, CLEVIS
874	578060	PIN, UNIV JOINT
875	579493	PIN, COTTER .

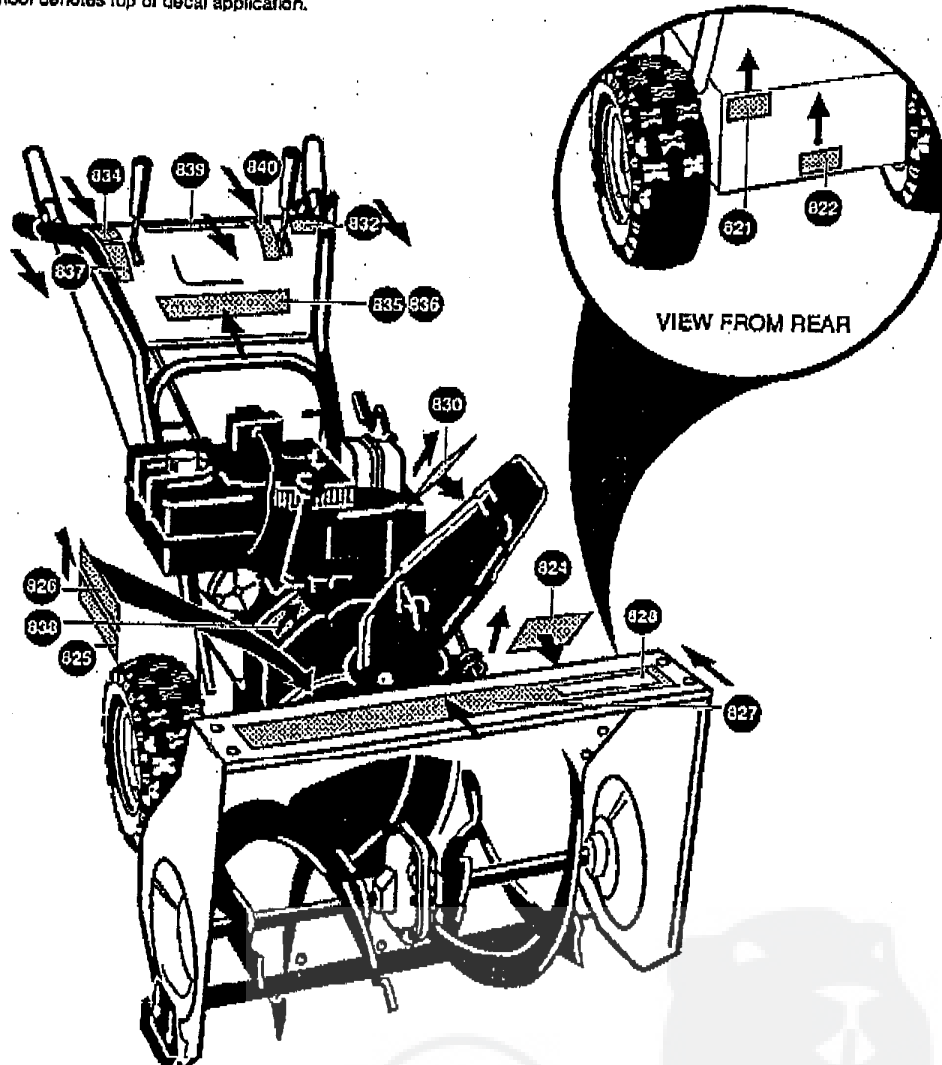
G2474-010&G2794-010

41

336677 A

↑ Symbol denotes top of decal application.

DECALS



REF NO.	PART NO.	PART NAME
821	-	NOT A SERVICABLE PART
822	7859	DECAL, OVER ADJ OF DISC
824	70141	DECAL, DANGER AUGER
825	-	NOT AVAILABLE ON THIS UNIT
826	302922	DECAL, DANGER
827	402805	DECAL, 9HP-27", G2794010
	402806	DECAL, 7HP-24", G2474010
828	-	NOT AVAILABLE ON THIS UNIT
830	313892	DECAL, DANGER CHUTE
832	402818	DECAL, WHEEL DRIVE
834	402819	DECAL, AUGER DRIVE
835	402803	DECAL, 9HP-27", G2794010
	402804	DECAL, 7HP-24", G2474010
836	-	NOT AVAILABLE ON THIS UNIT
837	402582	DECAL, SPEED
838	7390	DECAL, BELT STRETCH & ADJ
839	402815	DECAL, SINGLE HAND CONTROL
840	402816	DECAL, REMOTE CHUTE

334273 D