

Attn: Veronique

Boni

reads
10

OWNER'S MANUAL

11 H.P. LIGHT GROUND ENGAGING TRACTOR

with 42" Mower Deck

MODEL 3531-0000

Lawn Mower Division Warranty Policy

ONE YEAR LIMITED WARRANTY

For one (1) year from date of purchase by the first consumer for residential use (not 90 days commercial use), Lawn Mower Division warrants that it will replace free of charge, including labor, any original part of any Lawn Mower division product found to be defective by any authorized Service Dealer or the factory.

This warranty does not extend to any original parts or accessories for wear and tear (these parts are covered by their own factory or manufacturer's warranty). This warranty does not cover parts and accessories that are normal wear or parts that have failed subject to misuse or abuse. Maintenance of the unit or parts and accessories by an authorized Service Dealer or the factory is the responsibility of the owner.

Step by step, read and use to what is written should be followed for this Warranty is:

1. If a part or access defective, contact the store where the unit was purchased for the name and address of the authorized Service Dealer nearest to you.
2. The authorized Service Dealer or the Factory will Service Department of Lawn Mower Division will determine the cause of the problem and authorized Service dealer in your area.
3. Return the defective part along with proof of purchase to the authorized Service Dealer or the factory, whichever is nearest to you, covered by this warranty.

This warranty does not include any incidental warranties, including those of merchantability and fitness for a particular purpose. We warrant to give (1) year from date of purchase. Liability for incidental or consequential damages is excluded.

There are no implied warranties, including an implied warranty of fitness, so the above limitation may not apply to you. Some states do not allow the exclusion of incidental or consequential damages, so this above exclusion may not apply to you. This warranty gives you certain legal rights, and you may also have other rights which vary from state to state.

Lawn Mower Division P.O. Box 377 Des Moines, Iowa 50302

UNIT PARTS AND SERVICE

This manual contains instructions for safety, assembly, and maintenance. Familiarize yourself with its contents. Also, fill in and mail the warranty registration card included with the unit. For service other than covered in this manual, contact an authorized service dealer. A list of authorized parts and service dealers for your area has been furnished to the retail dealer where you purchased your unit. A nation-wide parts and service organization has been established to provide locally available parts and service. When ordering parts, always give the following information: 1. The Part Name; 2. The Part Number; 3. The Quantity desired; 4. The Full Model Number of the unit. The model number will be found on a plate attached to the unit.

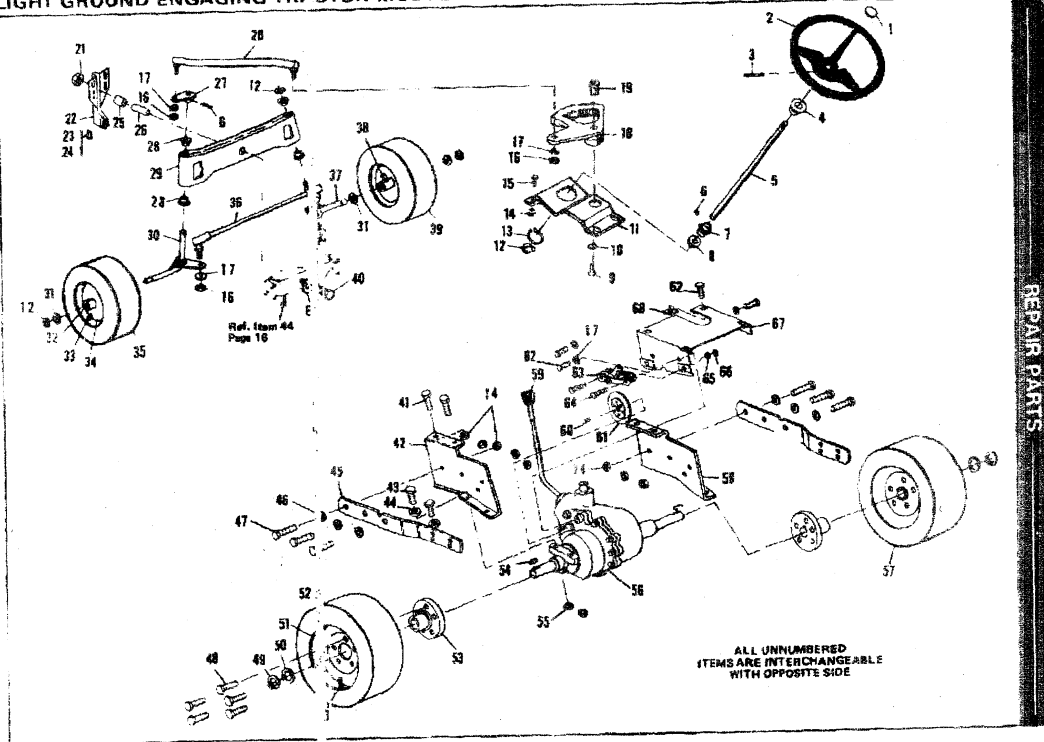


Look for this symbol. It means — ATTENTION! BECOME ALERT! A HAZARD TO OPERATOR, BYSTANDERS, PROPERTY OR UNIT MAY EXIST.



Address all correspondence and make checks payable to:
LAWN MOWER DIVISION
P.O. BOX 377
DES MOINES, IOWA 50302

LIGHT GROUND ENGAGING TRACTOR MODEL 3531-0000



LIGHT GROUND ENGAGING TRACTOR MODEL 3531-0000

ALWAYS GIVE THE FOLLOWING INFORMATION WHEN ORDERING REPAIR PARTS:
 1. The PART NUMBER 2. The PART NAME 3. QUANTITY DESIRED 4. The MODEL NUMBER (As shown on Model Plate)
 SEND PART ORDERS AS PER INSTRUCTIONS ON THE FRONT PAGE
 YOUR UNIT IS RIGHT HAND (RH) OR LEFT HAND (LH) AS YOU STAND BEHIND IT.
 DO NOT USE KEY NUMBERS WHEN ORDERING REPAIR PARTS, ALWAYS USE PART NUMBERS.
 All replacement parts will be supplied in current production colors or in a neutral color.
 A handling fee is applicable to small parts orders.

Key No.	Part No.	Description	Key No.	Part No.	Description	Key No.	Part No.	Description
1	43510	Cap, Steering Wheel	24	88027	Decal, Deck Hanger, L.H.	47	180081	Screw, Hex Hd, 5/16-18 x 1 1/2 In.
2	43609	Steering Wheel	25	49343	Spacer, Hanger	48	49778	Bolt, Wheel
3	486836	*Roll Pin, 1/4 x 2 1/4 In.	26	47831	Bushing	49	49757	Retaining Ring
4	39432	Bearing	27	49447	Steering Arm Assembly	50	49831	Washer, Hub
5	48536	Shaft, Steering Wheel	28	49387	Bearing, Front Spindle	51	49402	Wheel, Rear
6	454855	*Roll Pin, 1/4 x 1 1/4 In.	29	49389	Front Axle Assembly	52	49400	Tire, Rear
7	44098	Piston	30	49361	Front Spindle Assembly, L.H.	53	49348	Hub, Rear Wheel
8	39580	Bearing	31	642	Flatwasher	54	49758	Key, Hi Pro
9	39573	Screw, Lock, Hex Hd, 3/8-24 x 1 In.	32	49613	Bushing	55	9413534	*Locknut, Model 2300 (See Warranty on Page 13)
10	2483	Spring Washer	33	24187	Valve Stem	56	9413534	*Peerless, Model 2300 (See Warranty on Page 13)
11	50286	Steering Plate Assembly	34	49401	Wheel, Front	57	49398	Wheel & Tire Assy, Rear
12	36825	*Hi Ring	36	49399	Tire, Front	58	49356	Bracket, Transaxle, R.H.
13	39492	Retaining Ring	38	48601	*Hi Rod Assembly	59	29483	Knob, Shift Lever
14	9413447	*Locknut, Hex, 5/16-18 Thd	37	49362	Front Spindle Assembly, R.H.	60	3021	Key, Woodruff, No. 606
15	120226	*Screw, Hex Hd, 5/16-18 x 5/8 In.	38	273326	Zerk, Grease, 1/4-28 Thd	61	49396	Disc Assembly, Brake
16	120385	*Nut, Hex, 3/8-24 Thd	39	49397	Wheel & Tire Assembly, L.H.	62	120233	*Screw, Hex Hd, 3/8-18 x 1 In.
17	120392	*Lockwasher, Split, 3/8 In.	40	42456	Bolt, Front Axle Pivot	63	49395	Brake Caliper
18	48543	Sector Gear	41	180079	Screw, Hex Hd, 5/16-18 x 1 In.	64	180044	Screw, Hex Hd, 1/4-20 x 2 In.
19	43011	Shoulder Bolt, Sector Gear	42	89357	Bracket, Transaxle, L.H.	65	120380	Lockwasher, Split, 1/4 In.
20	49538	Drag Link Assembly	43	180129	Screw, Hex Hd, 3/8-18 x 1 1/2 In.	66	120376	Nut, Hex, 1/4-20 Thd
21	42446	Locknut, 5/8-18 Thd	44	274517	Flatwasher	67	49370	Bracket, Transaxle & Brake
22	49364	Bracket, Deck Hanger	45	89780	High Bar	68	44578	Nut, Speed Grip, 3/8-16 Thd
23	89026	Decal, Deck Hanger, R.H.	46	120386	Flatwasher, 1/4 In.	69	45209	Washer

*Standard Hardware Items - May Be Purchased Locally.

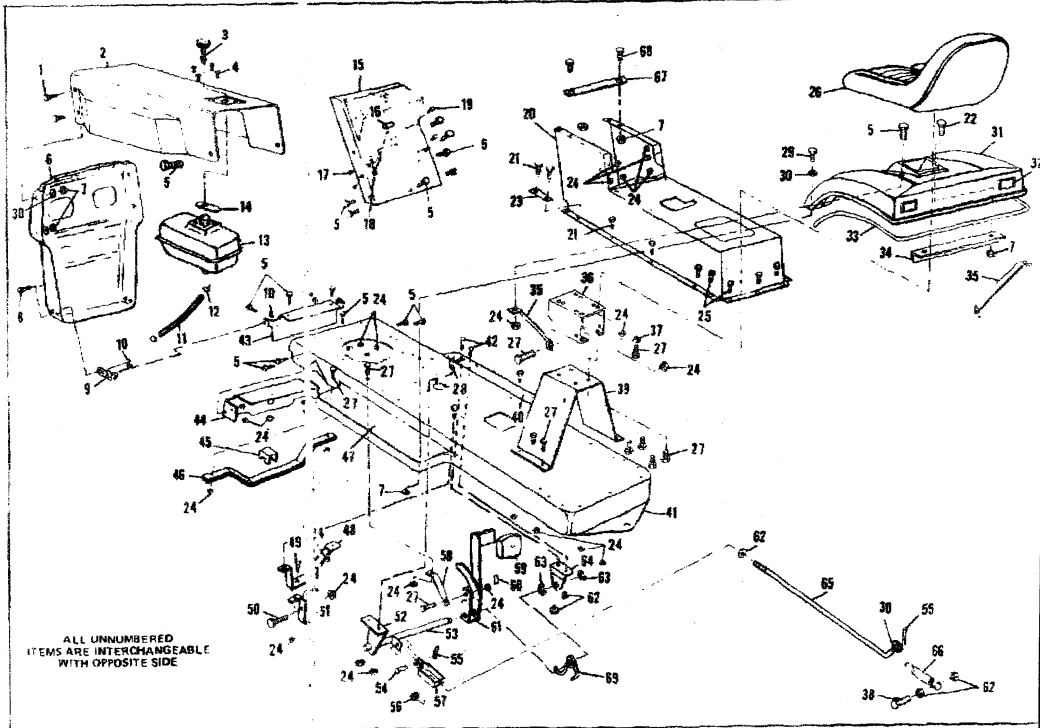
P. 3

01278726865

Anne Campbell

16 Oct 00 08:34

LIGHT GROUND ENGAGING TRACTOR MODEL 3531-0000

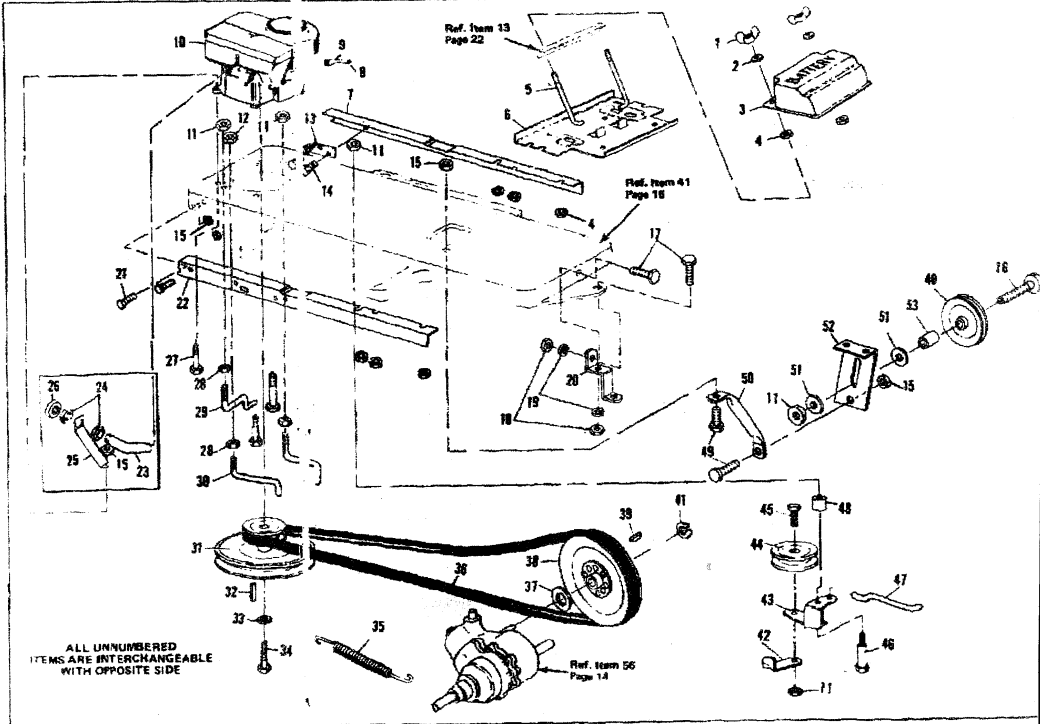


LIGHT GROUND ENGAGING TRACTOR MODEL 3531-0000

Key No.	Part No.	Description	Key No.	Part No.	Description	Key No.	Part No.	Description
1	48900	Screw, Hex Washer Hd, 5/16-20 x 1 in.	23	42385	Reinforcement, Console	46	49368	Brace, Front Footrest
2	49384	Hood Assembly	24	9413447	*Locknut, Hex, 5/16-18 Thd	47	48729	Foot Pad, L.H.
3	49493	Gas Cap	25	995346	*Screw, Taprite, 5/16-20 x 1/2 In.	48	49358	Guide Support, Rear, Mower Deck
4	49050	Screw, Plastic, 3/8-10 x 1/2 In.	26	49882	Seat	49	122017	*Screw, Hex Hd, 5/16-18 x 1 1/4 In.
5	48901	Screw, Hex Washer Hd, 5/16-20 x 5/8 In.	27	122007	*Screw, Hex Hd, 5/16-18 x 3/4 In.	50	122027	*Screw, Hex Hd, 5/16-18 x 1 1/4 In.
6	49771	Grille Assembly	28	120228	*Screw, Hex Hd, 5/16-18 x 5/8 In.	51	49899	Guide, Rear, Mower Deck
7	9424215	*Locknut, Hex, 3/8-20 Thd	29	121900	*Screw, Hex Hd, 5/16-20 x 1 In.	52	49345	Bracket, Brake-Clutch Rod
8	120233	*Screw, Hex Hd, 3/8-16 x 1 In.	30	120386	*Flatwasher, 3/4 In.	53	49352	Rod Assembly, Brake-Clutch
9	49334	Bracket, Grille	31	49764	Fender Assembly	54	49332	Pin, Clevis
10	9413534	*Locknut, Hex, 3/8-16 Thd	32	43525	Reflector	55	121224	*Pin, Cotter, 3/32 x 1 In.
11	36291	Tubing, Fuel Line	33	49770	Edging, Fender	56	120373	Nut, Square, 5/16-18 Thd
12	41008	Clamp, Fuel Line	34	49328	Filler, Fender	57	49349	Clevis, Brake Rod
13	48812	Tank, Fuel	35	49759	Brace, Fender Support	58	51239	Rod, Clutch Bracket
14	43468	Pad, Fuel Tank	36	49763	Bracket, Seat, Upper	59	48160	Rubber Pad, Pedal
15	49365	Dash Assembly	37	120638	*Lockwasher, Split, 5/16 In.	60	68210	Decal, Brake
16	39488	Knob, Throttle Control	38	122077	*Screw, Hex Hd, 5/16-18 x 2 1/2 In.	61	49393	Brake Pedal Assembly
17	271166	*Nut, Keps, No. 10-24 Thd	39	49761	Bracket, Seat, Lower	62	271184	*Nut, Keps, 5/16-18 Thd
18	49756	Throttle Control	40	48728	Foot Pad, R.H.	63	20864	"E" Ring
19	49390	Screw, Hex Hd, No. 10-24 x 1 in.	41	60741	Main Frame	64	48157	Bracket, Brake-Clutch Rod, Short
20	44229	Screw, Taprite, 5/16-20 x 1 In.	42	126211	*Carriage Bolt, 5/16-18 x 5/8 In.	65	49353	Brake Rod
21	120854	*Screw, Hex Hd, 5/16-20 x 5/8 In.	43	49782	Plate, Front Reinforcing	66	49342	Spring, Brake Return
			44	49365	Bracket, Axle Support, Front	67	50590	Brace, Console
			45	43838	Bracket, Upstop	68	120706	*Screw, Hex Hd, 5/16-20 x 1/2 In.
						69	51413	Spring, Brake Return

*Standard Hardware Items - May Be Purchased Locally.

LIGHT GROUND ENGAGING TRACTOR MODEL 3531-0000

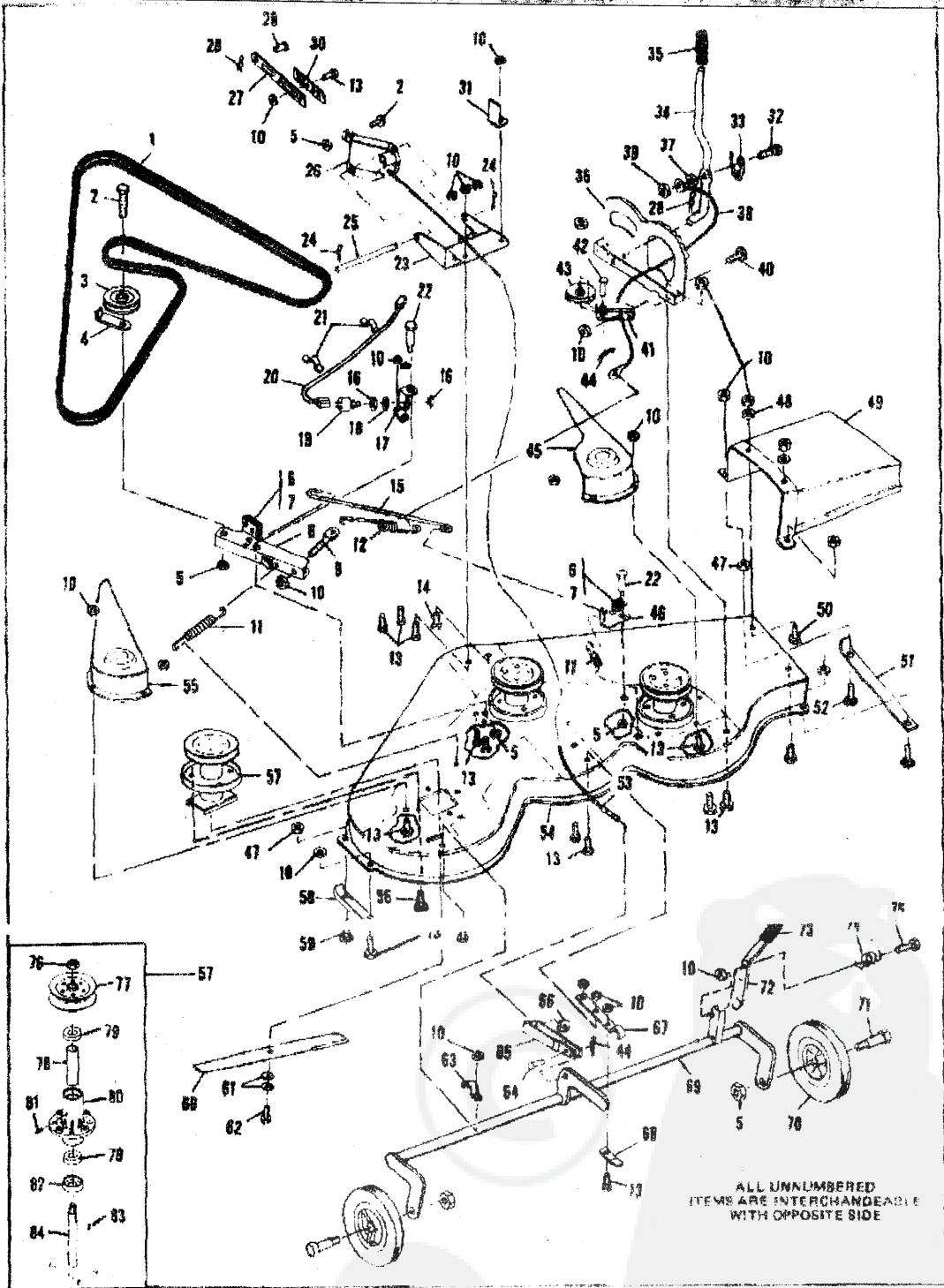


LIGHT GROUND ENGAGING TRACTOR MODEL 3531-0000

Key No.	Part No.	Description	Key No.	Part No.	Description	Key No.	Part No.	Description
1	997208	*Wingnut, Nylock, 1/2-20 Thd	20	49827	Hitch, Tractor	38	49368	Pulley, Input
2	120386	*Flatwasher, 1/2 In.	21	180077	*Screw, Hex Hd, 5/16-18 x 1/2 In.	39	3021	Key, Woodruff, No. 806
3	49786	Cover, Battery	22	49886	Angle, Torsion, L.H.	40	49404	Pulley, Backside Idler
4	50362	Locknut, Flange	23	46886	Tube, Muffer	41	2380	Retaining Ring
5	40234	Rod, Battery	24	46779	Locknut	42	39659	Belt Retainer
6	49762	Support, Main Frame	25	46925	Support, Muffer	43	40162	Idler Arm
7	49967	Angle, Torsion, R.H.	26	46706	Muffer	44	35374	Pulley, Idler
8	47828	Cap, Oil Drain Tube	27	122040	*Screw, Hex Hd, 5/16-18 x 1 1/2 In.	45	120918	*Screw, Hex Hd, 3/8-16 x 1 1/2 In.
9	47829	Tube, Oil Drain	28	271190	*Nut, Keps, 3/8-16 Thd	46	49333	Shoulder Bolt
10	Engine	See Footnote Below	29	40977	Belt Guide	47	40154	Rod, Clutch
11	9413534	*Locknut, Hex, 3/8-16 Thd	30	49363	Belt Guide	48	40209	Spacer
12	41529	Jamnut, 3/8-16 Thd	31	49391	Pulley, Engine	49	120228	*Screw, Hex Hd, 5/16-18 x 5/8 In.
13	49868	Bracket, Switch Mount	32	33200	Key, 1/2 x 1/2 x 1 1/2 In.	50	49354	Bracket, Idler Support
14	40686	*Screw, Tapfit, 1/2-20 x 3/8 In.	33	120383	*Lockwasher, Split, 7/16 In.	51	120394	*Flatwasher, 3/8 In.
15	9413447	*Locknut, Hex, 5/16-18 Thd	34	123667	*Screw, Hex Hd, 7/16-20 x 1 In.	52	49365	Bracket, Idler
16	122191	*Screw, Hex Hd, 3/8-16 x 2 In.	35	40158	Spring, Clutch	53	41604	Spacer
17	429211	Screw, Hex Hd, 5/8-11 x 1 1/2 In.	36	49405	V-Belt			
18	124589	Nut, Hex, 5/8 Thd.	37	49386	Washer			
19	121574	Lockwasher, 5/8 In.						

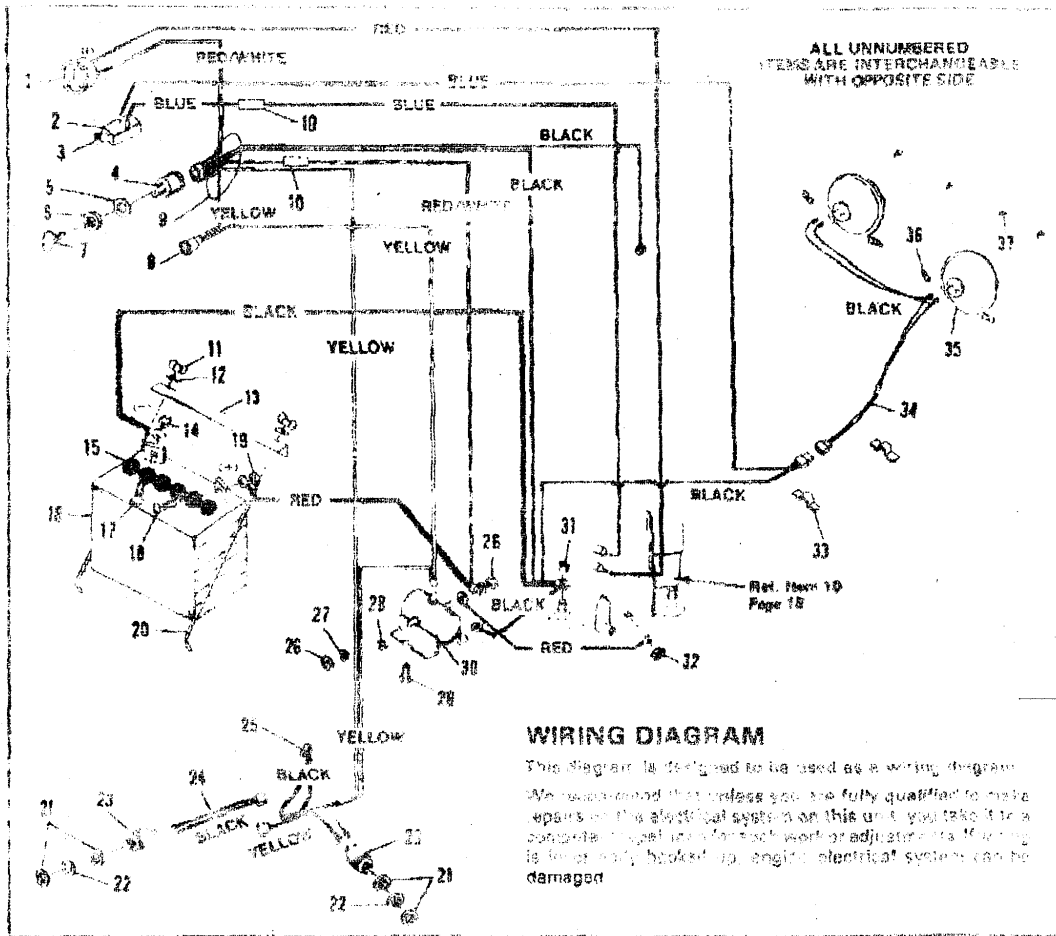
*Standard Hardware Items - May Be Purchased Locally.

Replacement engines and parts are obtainable from Engine Manufacturer's authorized Service Stations who are also to be contacted in regard to the Engine Warranty. See your Engine Manual for location of these stations.



Key No.	Part No.	Description
1	49330	V Bolt
2	120918	Screw, Hex Hd. 5/16 x 1 1/2 in.
3	61134	Pulley, Idler
4	49318	Belt Retainer
5	9413534	Locknut, 5/16-18 Thd
6	41471	Pad, Brake
7	41601	Rivet
8	49314	Clutch-Brake Arm Assembly
9	61183	Eyebolt
10	9413447	Locknut, 5/16-18 Thd
11	38410	Spring
12	49331	Spring, Clutch
13	120228	Screw, Hex Hd, 5/16-18 x 3/4 in.
14	122017	Screw, Hex Hd. 5/16-18 x 1 in.
15	50683	Brake Rod
16	46877	Nut, Switch
17	47517	Bracket, Idler Arm
18	46878	Washer, Switch
19	41204	Switch
20	48561	Wire Assembly
21	41482	Press Clip
22	47518	Shoulder Bolt
23	48675	Lift Support Plate
24	48675	Corner Pin
25	47814	Pin, Pivot
26	50613	Bracket, Pivot
27	49055	Bar Hitch, Straight
28	8280	Hair Pin Cotter
29	47816	Pin, Clevis, Short
30	49058	Bracket, Lock
31	49893	Upstop Bracket
32	50588	Screw, Hex Hd. Special, 1/4-20 x 1 1/4 in.
33	46561	Spring, Clutch Lever
34	50026	Clutch Lever
35	46478	Hand Grip
36	47515	Quadrant
37	271172	Keys Nut, 1/4-20 Thd
38	49326	Clutch Cable
39	9424215	Locknut, 1/4-20 Thd
40	102052	Screw, Hex Hd, 5/16-18 x 1 1/4 in.
41	49320	Support, Cable Pulley
42	49332	Pin, 3/8 x 1 in.
43	39298	Pulley, Nylon

Key No.	Part No.	Description
44	121272	Cotter Pin, 3/32 x 3/4 in.
45	49584	Belt Guard, R.H.
46	49316	Brake Lever Assembly (Includes Items 6 & 7)
47	271104	Keys Nut, 5/16-18 Thd
48	120358	Washer, 5/16 in.
49	49574	Chute, Discharge
50	122007	Screw, Hex Hd. 5/16-18 x 3/4 in.
51	49329	Skid, R.H.
52	126358	Carriage Bolt, 5/16-18 x 1 in.
53	46512	Lift Cable
54	48308	Mower Deck
55	49583	Belt Guard, L.H.
56	50634	Screw, Hex Hd. Torx 5/16-18 x 3/4 in.
57	50700	Outlet Assembly
58	49321	Skid, L.H.
59	120230	Carriage Bolt, 5/16-18 x 1 1/4 in.
60	49312	Blade, 14 1/2 in.
61	2483	Formed Washer
62	39573	Screw, Hex Hd, 1/4-20 x 1 in.
63	42424	Support, Pivot Tube
64	39522	Pin, Clevis
65	39404	Clevis, Lift Cable
66	120372	Nut, Square, 1/4-20 Thd
67	49322	Brace, Pivot Tube
68	50092	Angle Bracket
69	61299	Pivot Tube Assembly
70	39831	Wheel & Tire Assembly
71	23763	Axle, Deck Wheel
72	50027	Lever, Height Adjust
73	48938	Hand Grip, Height Adjust Lever
74	28170	Spring, Height Adjust Lever
75	122040	Screw, Hex Hd, 5/16-18 x 1 1/2 in.
76	42445	Locknut, 5/16-18 Thd
77	50371	Pulley
78	50818	Spacer
79	50597	Bearing
80	50702	Housing
81	706	Grease Fitting
82	50616	Dust Shield
83	103906	Key, Woodruff
84	50827	Shaft & Saddle Assembly



WIRING DIAGRAM

This diagram is designed to be used as a wiring diagram. We recommend that unless you are fully qualified to make repairs on the electrical system on this unit, you take it to a competent repair shop for such work or adjustments. Making it in or out of order, breaking up engine electrical system can be damaged.

Key No.	Part No.	Description	Key No.	Part No.	Description
1	30463	Ammeter	30	40234	Battery Rod
2	40907	Switch, Headlamp	31	45877	Nut, Lockout Switch Part
3	40778	Key, Headlamp Switch	32	40978	Lockwasher, (Lockout Switch Part)
4	44746	Switch, Ignition/Key	33	41304	Switch, Lockout
5	130667	Lockwasher (Switch Part)	34	18851	Wire Assembly, Deck Switch
6	48140	Locknut (Switch Part)	35	47071	Wire Assembly, By Pass
7	38280	Key, Ignition	36	120388	Locknut, Hex, 5/16-24 Tht
8	45323	Indicator Light	37	120098	Lockwasher, Split, 5/16 In.
9	40403	Wire Harness Assembly	38	942415	Locknut, Hex, 1/2-20 Tht
10	68271	Fuse	39	120954	Screw, Hex Hd, 1/2-20 x 5/8 In.
11	987208	"Wing Nut, Nylock, 1/2-20 Tht	40	44428	Solenoid
12	120388	"Flatwasher, 1/2 In.	41	9411417	Locknut, Hex, 5/16-18 Tht
13	40241	Bracket, Battery Hold-Down	42		Engine Part
14	27172	Nut, Keys, 1/2-20 Tht	43	11997	Wire Clip, Brass
15	40887	Cap, Battery	44	16211	Lead Wire, Headlamp
16	2838	Battery	45	44095	Headlamp
17	150368	"Carriage Bolt, 1/2-20 x 1/2 In.	46	60565	Key, Headlamp Mounting
18	120277	"Carriage Bolt, 1/2-20 x 3/8 In.	47	49685	Switch, Bell Top, 1/4 x 1/4 In.
19	271184	Nut, Keys, 5/16-18 Tht			

*Standard Hardware Items - May Be Purchased Locally