

REPAIR PARTS MANUAL

39" - 12 H.P. RIDING MOWER

MODEL 3560-93

WARRANTY

ONE YEAR LIMITED WARRANTY

For one (1) year from date of purchase by the first consumer for residential use (thirty (30) days commercial use), Western International Incorporated warrants that it will replace free of charge, including labor, any original part of any Western International Incorporated product found to be defective by any authorized Service Dealer or the factory, except the battery which is warranted for ninety (90) days from date of purchase.

This warranty does not cover engine, transmission, transaxle or differential (these items are covered by their manufacturer's own warranty). This warranty does not cover parts that have failed due to normal wear or parts that have failed subject to misuse or abuse. Transportation of the unit or part to and from an authorized Service Dealer or the factory is the responsibility of the owner.

A step by step explanation as to what procedure should be followed for this Warranty is:

1. If a part becomes defective, contact the store where the unit was purchased for the name and address of the authorized Service Dealer nearest to you.
2. If you cannot locate an authorized Service Dealer, write Service Department of Western International Incorporated for the name and address of the authorized Service Dealer in your area or call the Service Department at 1-515-265-3461.
3. Return the defective product, along with proof of purchase to such authorized Service Dealer for replacement of any defective part where covered by this warranty.

There is no other express warranty. Implied warranties, including those of merchantability and fitness for a particular purpose are limited to one (1) year from date of purchase. Liability for incidental or consequential damages are excluded.

Some states do not allow limitations on how long an implied warranty lasts, so the above limitation may not apply to you. Some states do not allow the exclusion of incidental or consequential damages, so the above exclusion may not apply to you. This warranty gives you specific legal rights, and you may have other rights which vary from state to state.

Western International Incorporated P.O. Box 377 Des Moines, Iowa 50302

UNIT PARTS AND SERVICE

This manual contains repair parts information and instructions for safety. Read the operator's manual carefully and completely so that you will know proper assembly, use and care of your unit. Fill in and mail the registration card packed with the unit. For service other than covered in operator's manual, contact an authorized service dealer. A nationwide parts and service organization has been established to provide locally available parts and service. A list of authorized parts distributors has been included in this manual. When ordering repair parts, always give the following information: 1. The Part Name, 2. The Part Number, 3. The Quantity desired; 4. The Full (eight digit) Model Number of the unit. The model number will be found on a plate attached to the unit.

Look for this symbol.



It means - ATTENTION! BECOME ALERT! A HAZARD TO OPERATOR, BYSTANDERS, PROPERTY OR EQUIPMENT MAY EXIST.

WESTERN INTERNATIONAL INCORPORATED
P.O. BOX 377
DES MOINES, IOWA 50302

Part No. 301486

4887

OPERATIONAL PRECAUTIONS

▲ THESE INSTRUCTIONS ARE FOR YOUR PROTECTION. PLEASE READ THEM CAREFULLY. ▲

1. Know the controls and how to stop quickly. **READ THIS OPERATOR'S MANUAL** and instructions furnished with attachments.
2. Wear safety glasses or eye shields when assembling or operating riding mower.
3. Do not allow children to operate the machine. Do not allow adults to operate it without proper instruction.
4. Do not carry passengers. Do not mow when children and others are around. Disengage power to blade(s) or attachment(s) and stop the engine while others are in the vicinity of the mower.
5. Battery fluid (electrolyte) is an **ACID** and is extremely dangerous. Do not smoke while servicing the battery. Do not service battery near an open flame or spark.
6. Handle gasoline with care. It is highly flammable.
 - A. Use approved gasoline container.
 - B. Never remove the fuel cap of, or add gasoline to, a running or hot engine, or an engine that has not been allowed to cool for several minutes after running. Never fill the tank indoors and always clean up spilled gasoline immediately.
 - C. Do not smoke while filling fuel tank.
 - D. Do not run the engine indoors. Open doors if engine must be run in garage. Exhaust fumes contain **CARBON MONOXIDE**, an **ODORLESS** and **DEADLY GAS**.
7. Check fuel supply before each use allowing space for expansion as the heat of the engine and/or sun can cause gasoline to expand.
8. Do not operate mower when barefooted. Always wear substantial footwear, preferably steel-toed shoes. Do not wear loose fitting clothing that could get caught in moving parts.
9. Clear the work area of objects (wire, rocks, etc.) which might be picked up and thrown. Check all controls for proper function.
10. Disengage all attachment clutches, shift to neutral, and set parking brake before attempting to start the engine (motor). When starting engine equipped with a pull starter, stand firm and make sure your feet are well away from the blade(s).
11. Disengage power to blade(s) or other attachment(s) and stop the engine (motor) before leaving the operator's position. Always dismount from left side.
12. Disengage power to blade(s) or other attachment(s) and stop the engine (motor) before making any repairs or adjustments.
13. Disengage power to blade(s) or other attachment(s) when transporting or not in use.
14. Take all possible precautions when leaving the vehicle unattended, such as disengaging power to blade(s) or attachment(s), lower the attachment(s), setting the parking brake, stopping the engine (motor), and removing the key.
15. Do not stop or start suddenly when going uphill or downhill. Mow up and down the face of steep slopes; never across the face.
16. Reduce speed and exercise extreme caution on slopes and in sharp turns to prevent tipping or loss of control. Be especially cautious when changing direction on slopes.
17. Stay alert for holes, rocks, and roots in the terrain and other hidden hazards. Keep away from drop-offs. Never operate your riding mower on wet or slippery grass or at a speed which could cause a skid. Exercise care when mowing around a fixed object to prevent the blade(s) from striking it. Never deliberately run over any foreign object.
18. Always disengage blade control lever before attempting to remove the mower from a hole or other obstruction.
19. Use care when pulling loads or using heavy equipment.
 - A. Use only approved drawbar hitch points.
 - B. Limit loads to those you can safely control.
 - C. Do not turn sharply. Use care when backing.
 - D. Use counterweight(s), wheel weights or tire chains when suggested in attachment(s) instructions.
20. Watch for traffic when crossing or near roadways.
21. When using attachment(s), never direct discharge of material toward bystanders nor allow anyone near the vehicle while in operation.
22. Keep the vehicle and attachments in good operating condition, and keep safety devices in place and in working condition.
23. Keep all nuts, bolts, and screws tight to be sure the equipment is in safe working condition.
24. Never store the equipment with gasoline in the tank inside a building where fumes may reach an open flame or spark. Allow the engine to cool before storing in any enclosure.
25. To reduce fire hazard, keep the engine free of grass, leaves, or excessive grease.
26. The vehicle and attachments should be stopped and inspected for damage after striking a foreign object, and the damage should be repaired before restarting and operating the equipment.
27. Do not change the engine governor settings or overspeed engine.
28. When using the vehicle with mower, proceed as follows:
 - A. Mow only in daylight or in good artificial light.
 - B. Never make a cutting height adjustment while the engine (motor) is running if the operator must dismount to do so.
 - C. Shut the engine (motor) off when removing the grass catcher or unclogging chute.
 - D. Check the blade mounting bolts for proper tightness at frequent intervals.
29. Under normal usage, the grass catcher bag material is subject to deterioration and wear. Check bag frequently for deterioration and wear and replace worn bags. Check that replacement bags comply with the original manufacturer's recommendations or specifications.
30. Disengage power to mower before backing up. Do not mow in reverse unless absolutely necessary and then only after careful observation of the entire area behind the mower.

OWNER'S INFORMATION

Record the following information about your unit so that you will be able to provide it in case of loss or theft.

MODEL NUMBER: - (Enter complete 8 digit model number from model plate on unit)
 PURCHASE DATE: ___/___/___ CODE NO. _____ SERIAL NO. _____
 DEALER'S NAME AND ADDRESS _____
 CITY _____ STATE _____ TELEPHONE _____

CONTENTS OF SHIPPING CARTON

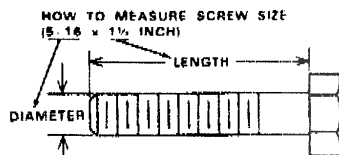
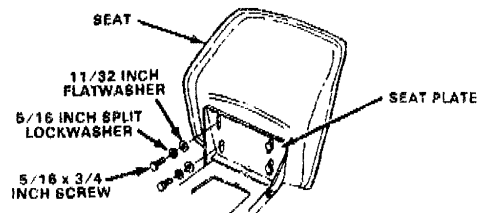
- 1 - 39 inch Riding Mower
- 1 - Steering Wheel (with roll pin partially installed)
- 1 - Engine Manual (English)
- 1 - Engine Manual (French)
- 1 - Operator's Manual (English)
- 1 - Owner's Manual (French)
- 1 - Repair Parts Manual (English)
- 1 - Chute Deflector
- 1 - Battery
- 1 - Seat
- 1 - Bag of Assembly Parts Containing:
 - 1 - Trough (Oil Drain)
 - 1 - Pivot Pin
 - 1 - Spring
 - 1 - Battery Hold-Down Bracket
 - 1 - Battery Hold-Down Rod
- 1 - Bag of Battery Hold-Down Parts Containing:
 - 1 - 9/32 inch Flatwasher
 - 1 - 1/4 inch Split Lockwasher
 - 1 - 1/4 inch Hex Nut
- 1 - Bag of Battery Cable Installation Parts Containing:
 - 2 - 1/4 x 1/4 Hex Head Screws
 - 2 - 1/4 inch Keps Nuts (star washers attached)
- 1 - Bag of Seat Assembly Parts Containing:
 - 4 - 5/16 x 3/4 inch Hex Head Screws
 - 4 - 5/16 inch Split Lockwashers
 - 4 - 11/32 inch Flatwashers

NOTICE: The seat assembly instructions in this manual are different than those printed in the **Operator's Manual** supplied with your unit. Please use these instructions when installing seat.

SEAT INSTALLATION

1. Raise seat plate (see illustration) and attach seat to plate with four 5/16 x 3/4 inch screws, four 5/16 inch split lockwashers and four 11/32 inch flatwashers as shown.

NOTE: Seat switch is now connected to wire harness at the factory.



TOOLS REQUIRED FOR ASSEMBLY

- 1 - 1/2 inch Wrench (or adjustable wrench)
- 2 - 7/16 inch Wrenches (or adjustable wrenches)
- 1 - Hammer (rawhide or plastic preferred)

⚠ DANGER ⚠

This riding mower can be dangerous if carelessly used.

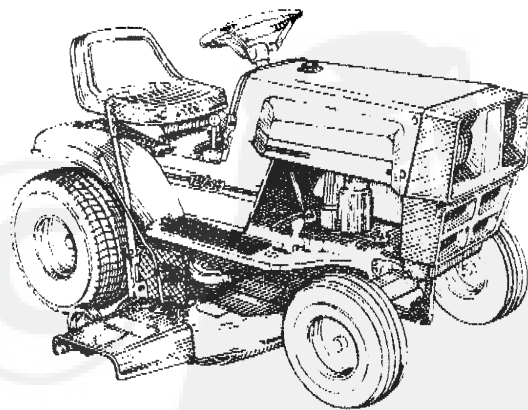
Read Owner's Manual thoroughly before operating riding mower.

Always wear safety glasses or eye shields while assembling or operating riding mower.

DO NOT carry passengers at any time.

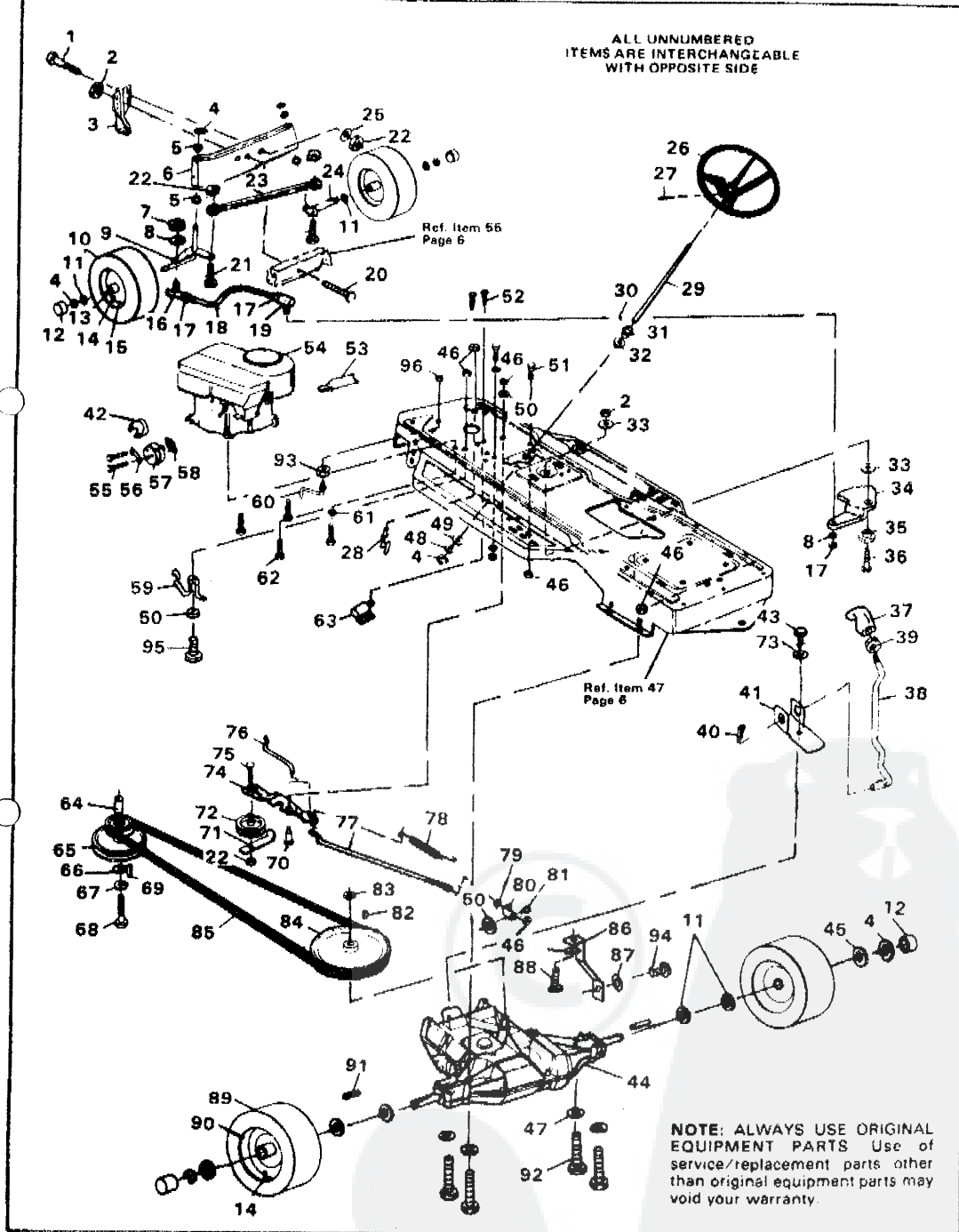
Keep hands, feet, hair and loose clothing away from discharge area, underside of mower deck or any moving parts while engine is running.

DO NOT allow children or young teenagers to operate or be near riding mower while it is operating.



REPAIR PARTS

39" RIDING MOWER MODEL 3560-93



39" RIDING MOWER MODEL 3560-93

ALWAYS GIVE THE FOLLOWING INFORMATION WHEN ORDERING REPAIR PARTS:
1. The PART NUMBER; 2. The PART NAME; 3. QUANTITY DESIRED; 4. The MODEL NUMBER (As shown on Model Plate)
SEND PART ORDERS AS PER INSTRUCTIONS ON THE FRONT PAGE

YOUR UNIT IS RIGHT HAND (RH) OR LEFT HAND (LH) AS YOU STAND BEHIND IT.
DO NOT USE KEY NUMBERS WHEN ORDERING REPAIR PARTS, ALWAYS USE PART NUMBERS.
All replacement parts will be supplied in current production colors or in a neutral color.
A handling fee is applicable to small parts orders.

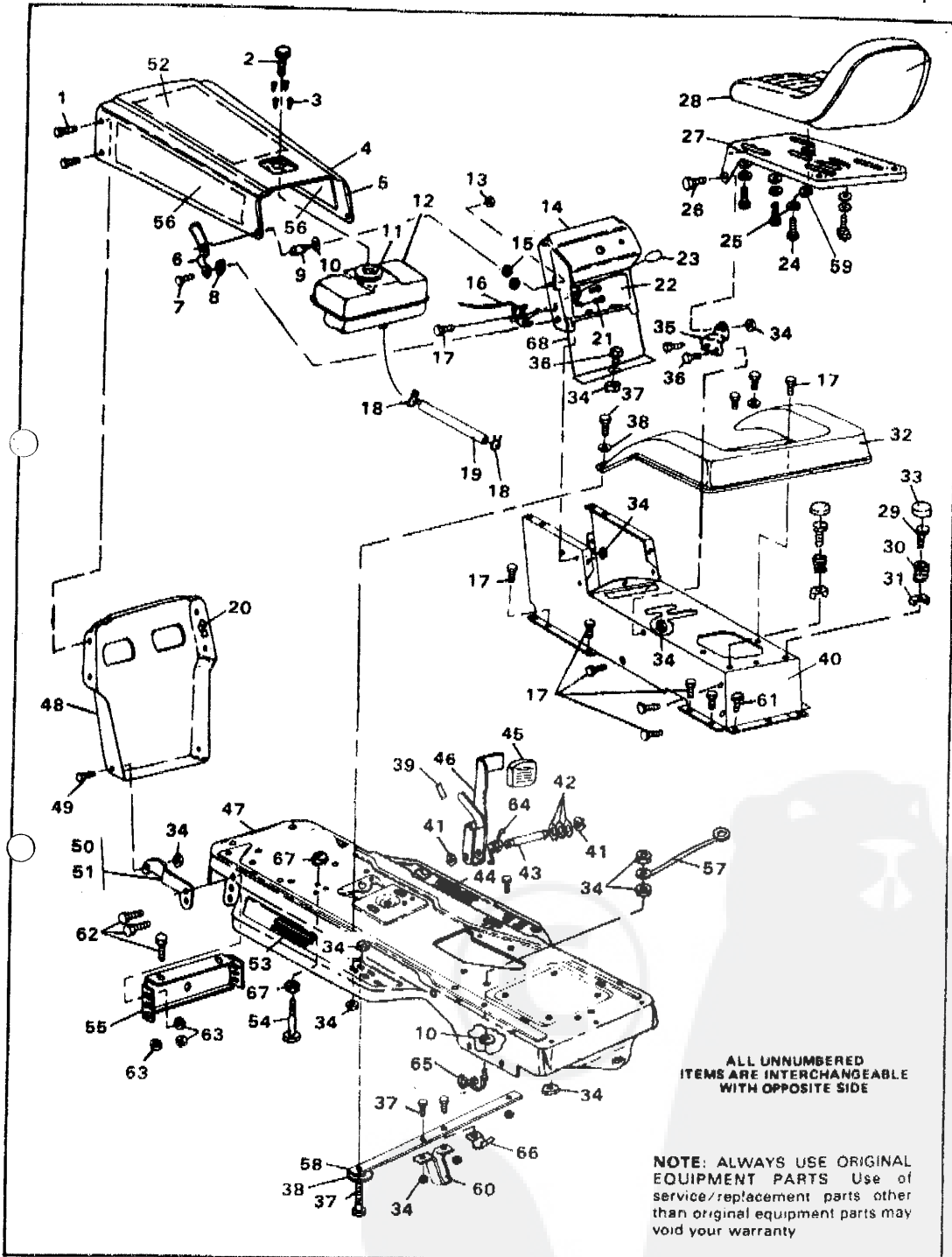
Key No.	Part No.	Description	Key No.	Part No.	Description
1	122207	*Screw, Hex Hd, 5/16 x 3 In.	50	46602	Washer, 5/16 In.
2	9414074	Locknut, 1/2-13 Thd.	51	120229	*Screw, Hex Hd, 5/16-18 x 3/8 In.
3	57167	Bracket, Deck Hanger	52	57220	Screw, Tapitite
4	36625	"E" Ring	53	54873	Trough, Oil Drain
5	52407	Bearing, Front Spindle	54	Engine	§See Footnote Below
6	55730	Front Axle Assembly	55	173083	Screw, Hex Hd, 5/16-18 x 3 1/2 In.
7	120369	*Nut, Hex, 3/8-24 Thd.	56		Engine Part
8	120382	*Lockwasher, Split, 3/8 In.	57	67908	Muffler
9	58287	Front Spindle Assembly, L.H.	58	46708	Gasket, Muffler
10	41108	Tire, Front	59	58356	Belt Guide
11	642	Flatwasher, 3/4 In.	60	300834	Belt Guide
12	40394	Hub Cap	61	138485	Star Washer
13	39979	Bearing, Front Wheel	62	50947	Screw, Tapitite, 3/8-16 x 1 1/4 In.
14	24167	Valve Stem	63	57211	Switch
15	39829	Wheel w/Bearing, Front	64	66430	Spacer
16	21275	Ball Joint	65	58361	Pulley
17	124925	*Nut, Hex, 3/8-24 Thd.	66	56431	Washer, Pilot
18	58291	Steering Link	67	120383	*Lockwasher, Split, 7/16 In.
19	57158	Ball Joint	68	180796	*Screw, Hex Hd, 7/16-20 x 5 In.
20	52403	Shoulder Bolt, Front Axle Pivot	69	57791	Key
21	180128	*Screw, Hex Hd, 3/8-16 x 1 3/4 In.	70	300793	Shoulder Bolt
22	9413534	Locknut, 3/8-16 Thd.	71	39659	Belt Retainer
23	58280	Tie Rod Assembly	72	35374	Pulley, Idler
24	58288	Front Spindle Assembly, R.H.	73	57157	Washer
25	2483	Spring Washer	74	300154	Idler Arm
26	301251	Steering Wheel	75	45882	Carriage Bolt, Rd Hd, 3/8-16 x 1 1/2 In.
27	456836	*Roll Pin, 1/4 x 2 1/4 In.	76	57204	Rod, Clutch
28	300440	Belt Guide	77	57203	Brake Rod
29	58243	Shaft, Steering	78	56359	Spring, Clutch
30	58274	Pin, Dowel	79	271184	*Nut, Keps, 5/16-18 Thd.
31	58244	Pinion, Steering	80	57217	Bracket, Brake Rod
32	301410	Bushing	81	20607	Shoulder Bolt
33	22265	Washer, 1/2 In.	82	3021	Key, Woodruff
34	58289	Sector Gear	83	22053	Retaining Ring
35	52406	Eccentric	84	55520	Pulley
36	180177	*Screw, Hex Hd, 1/2-13 x 1 1/2 In.	85	57214	V-Belt
37	58284	Knob, Gear Shift	86	54690	Stabilizing Bracket
38	57481	Shift lever	87	120638	*Lockwasher, Split, 5/16 In.
39	120238	Jam Nut, 1/2-13 Thd.	88	122017	*Screw, Hex Hd, 5/16-18 x 1 In.
40	137185	*Pin, Cotter, 1/8 x 1 In.	89	57164	Tire, Rear
41	57480	Shift Bracket	90	57165	Wheel, Rear
42	54767	Heat Shield, Muffler	91	39628	Key, 3/16 x 3/16 x 2 1/2 In.
43	56255	Screw, Hex Hd, 1/4-20 x 3/4 In.	92	180112	*Screw, Hex Hd, 5/16-18 x 2 3/4 In.
44	Transaxle	†Peerless 5 Speed, Model 920-019	93	271190	*Nut, Keps, 3/8-16 Thd.
45	42816	Flatwasher, 3/4 In.	94	35498	Screw, Tapitite, 5/16-18 x 3/4 In.
46	9413447	Locknut, 5/16-18 Thd.	95	180079	*Screw, Hex Hd, 5/16-18 x 1 In.
47	120393	*Flatwasher, 1 1/32 In.	96	124824	Jam Nut, 5/16 In.
48	21682	Washer, 3/4 In.	97	301485	Manual, Instruction (French)
49	58275	Washer	98	301486	Manual, Parts (English)
			99	63037	Manual, Operator's (English)

*Standard Hardware Items - May Be Purchased Locally.

†Contact Tecumseh/Peerless authorized service dealer for parts and warranty.

§Contact Engine Manufacturer's authorized service dealer (See Engine Manual) for parts and warranty.

39" RIDING MOWER MODEL 3560-93

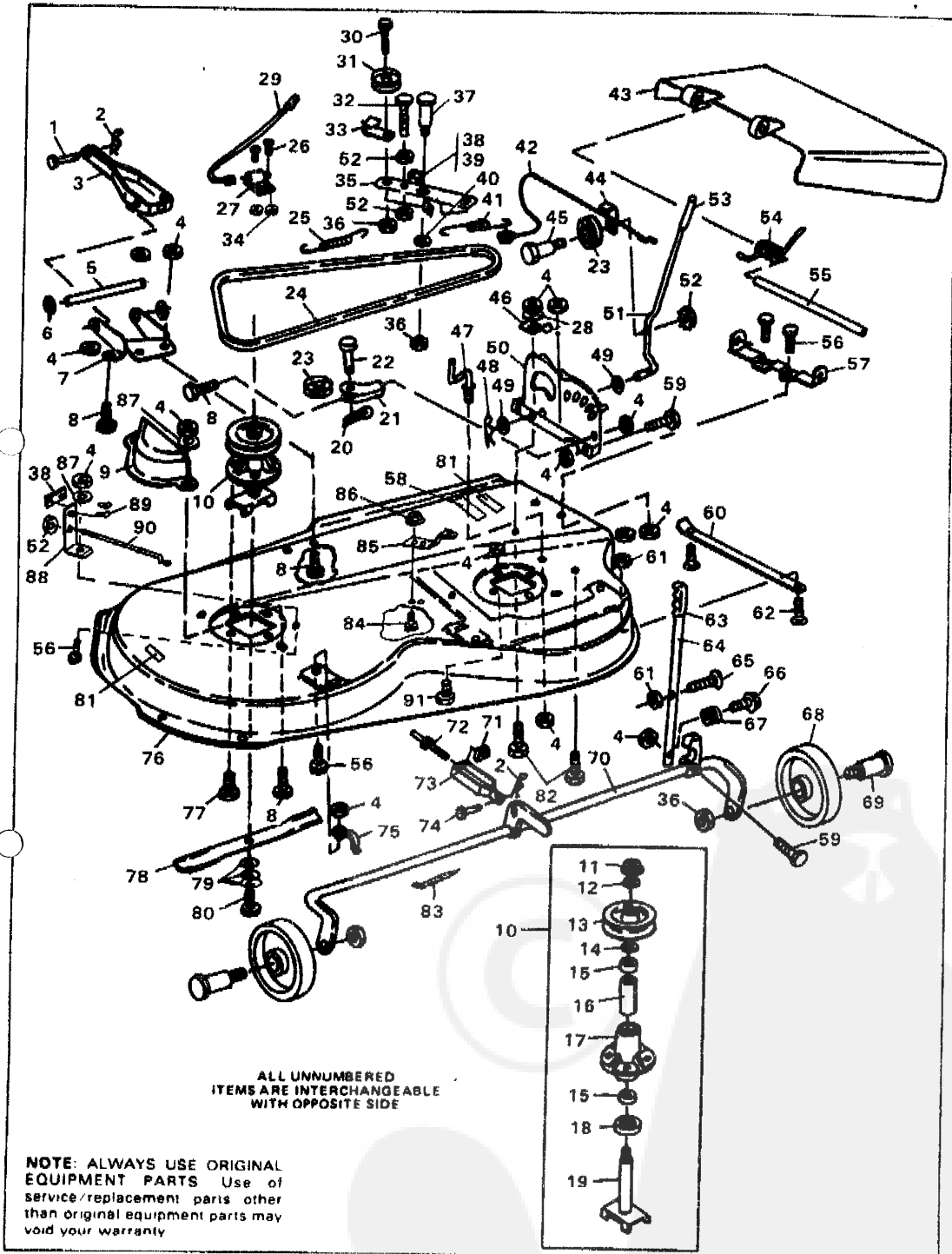


39" RIDING MOWER MODEL 3560-93

Key No.	Part No.	Description	Key No.	Part No.	Description
1	57215	Screw, Taptite, 5/16-9 x 3/4 In.	35	57152	Bracket, Support
2	50988	Gauge, Fuel	36	120228	*Screw, Hex Hd, 5/16-18 x 3/8 In.
3	49050	Screw, Plastite, 1/4-20 x 3/4 In.	37	122017	*Screw, Hex Hd, 5/16-18 x 1 In.
4	57799	Hood	38	446363	*Flatwasher, 3/8 In.
5	56303	Edging, Hood	39	67950	Decal, Parking Brake
6	57159	Latch, Hood	40	301237	Console
7	8482	Shoulder Bolt	41	20864	Retaining Ring
8	120394	*Flatwasher, 13/32 In.	42	2968	Flatwasher
9	53446	Pin, Hood Latch	43	57196	Rod, Brake-Clutch
10	138538	Lockwasher, Int. Tooth, 5/16 In.	44	58232	Foot Pad, R.H.
11	54885	Pad, Fuel Tank	45	52785	Pad, Brake Pedal
12	48812	Fuel Tank	46	57399	Brake Pedal Assembly
13	45174	Locknut, Wide Fl, 5/16-18 Thd.	47	58338	Main Frame
14	300762	Dash	48	53402	Grille
15	271166	*Nut, Keps, No 10-24 Thd.	49	36149	Shoulder Bolt
16	56534	Throttle Control	50	58088	Bracket, Grille, R.H.
17	995346	*Screw, Taptite, 1/4-20 x 1/2 In.	51	58089	Bracket, Grille, L.H.
18	41008	Clamp, Fuel Line	52	55835	Pad, Hood Top
19	57876	Tubing, Fuel Line	53	58231	Foot Pad, L.H.
20	41482	Press Clip	54	49930	Rod, Upstop
21	35291	Screw, Hex Hd, No. 10-24 x 1/2 In.	55	56361	Bracket, Axle Support
22	301483	Decal, Dash	56	55836	Pad, Hood Side
23	50607	Knob, Throttle Control	57	55511	Ground Wire
24	122007	*Screw, Hex Hd, 5/16-18 x 3/4 In.	58	43964	Bracket, Deck Guide Support
25	120638	*Lockwasher, Split, 5/16 In.	59	120393	*Flatwasher, 11/32 In.
26	20507	Shoulder Bolt	60	49777	Guide, Rear Deck
27	57417	Mounting Bracket, Seat	61	35497	Screw, Taptite, 5/16-18 x 1/2 In.
28	57452	Seat	62	56030	Screw, Hex Hd, 5/16-18 x 3/4 In.
29	44811	Screw, Taptite, 1/4-20 x 3/4 In.	63	55273	Locknut, Wide Flange, 5/16-18 Thd.
30	57153	Spring, Seat	64	57947	Spring, Return
31	300284	Clip, Seat	65	57259	Belt Guide
32	57170	Fender Assembly	66	57569	Retainer, Wire
33	56907	Cover, Spring	67	9413534	Locknut, 3/8-16 Thd.
34	9413447	Locknut, 5/16-18 Thd.	68	55540	Bulkhead, Dash

*Standard Hardware Items - May Be Purchased Locally

39" RIDING MOWER MODEL 3560-93

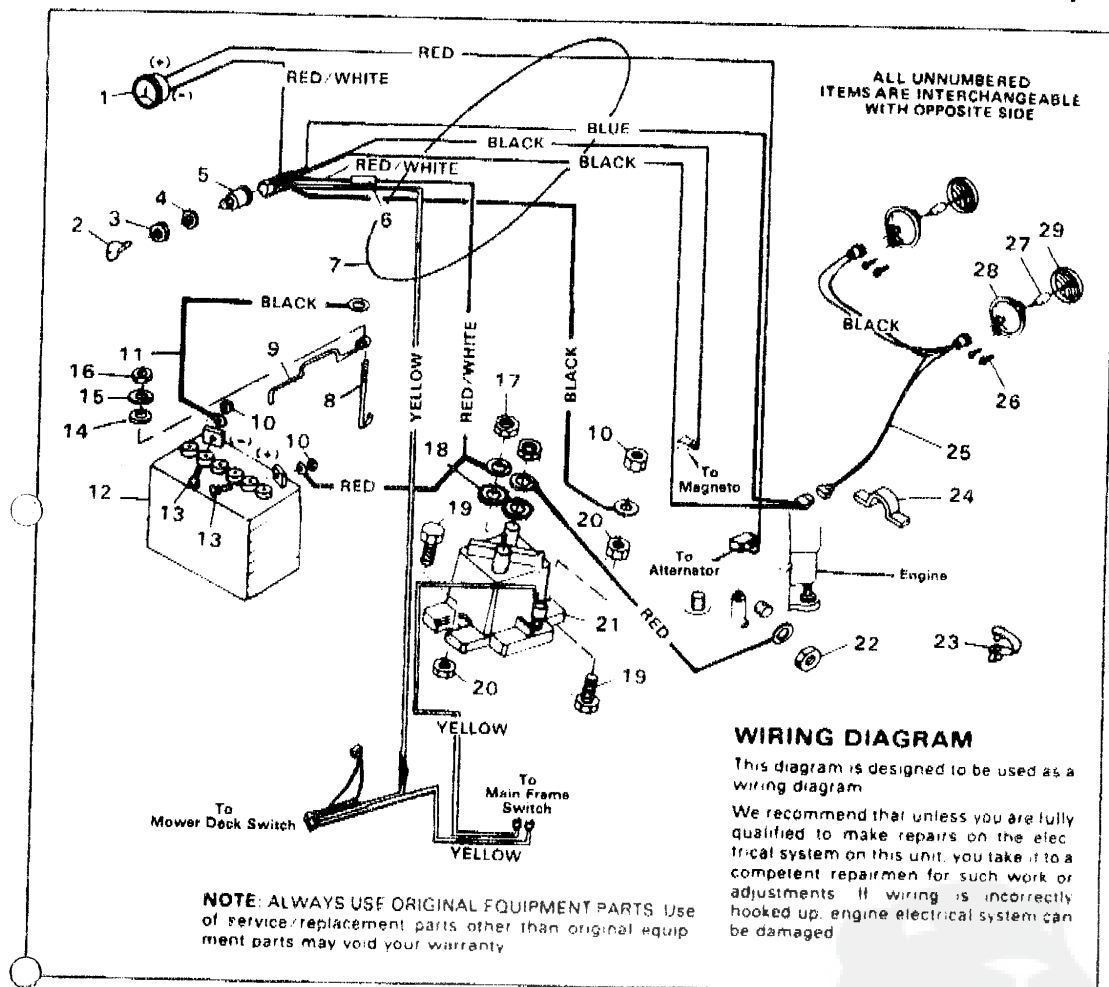


39" RIDING MOWER MODEL 3560-93

Key No.	Part No.	Description	Key No.	Part No.	Description
1	47816	Pin, Clevis	47	57318	Retainer, Belt
2	86180	Hairpin Cotter	48	8260	Hairpin Cotter
3	57340	Pivot Bracket	49	120396	Flatwasher
4	9413447	Locknut, 5/16-18 Thd.	50	57337	Quadrant
5	57196	Pin, Pivot	51	300188	Clutch Lever
6	20864	"E" Ring	52	9424215	Locknut, 1/4-20 Thd.
7	57327	Lift Support Plate	53	46478	Grip, Clutch Lever
8	120228	*Screw, Hex Hd, 5/16-18 x 5/8 In.	54	55767	Spring, Discharge Chute
9	57328	Belt Guard, L.H. Pulley	55	57317	Rod, Pivot
10	56424	Quill Assy. (Incl. Nos. 11-19)	56	120834	*Screw, Hex Hd, 5/16-18 x 1/2 In.
11	51445	Locknut, Flange	57	57360	Bracket, Pivot
12	56365	Flatwasher	58	68882	Decal, Height Adjust
13	56390	Pulley	59	122040	*Screw, Hex Hd, 5/16-18 x 1 1/2 In.
14	51449	Spacer	60	57314	Skid Bar
15	49562	Bearing	61	271184	*Nut, Keps, 5/16-18 Thd.
16	50818	Spacor. Tube	62	126216	*Carriage Bolt 5/16-18 x 3/4 In.
17	55547	Quill	63	56924	Grip, Height Adjust Lever
18	50616	Dust Shield	64	57329	Height Adjust Lever
19	56425	Saddle & Shaft Assy.	65	57324	Screw, Latch
20	121222	*Cotter Pin, 3/32 x 3/4 In.	66	995338	Screw, Taptite, 1/4-20 x 3/8 In.
21	49320	Support, Cable Pulley	67	57319	Spring
22	49332	Pin, 3/8 x 1 In.	68	52584	Wheel, Deck
23	39298	Pulley, Nylon	69	23763	Wheel Axle
24	300880	V-Belt	70	57338	Pivot Tube Assembly
25	35410	Spring	71	120372	*Nut, Square, 1/4-20 Thd.
26	159943	Screw, Pan Hd, No. 10-24 x 5/8 In.	72	300341	Lift Cable
27	57211	Switch	73	300703	Clevis, Lift Cable
28	120386	*Flatwasher, 5/16 In. I.D.	74	39522	Pin, Clevis
29	57764	Wire Assembly	75	51985	Support, Pivot Tube
30	57325	Carriage Bolt, 3/4-16 x 2 In.	76	58339	Mower Deck
31	300841	Pulley, Idler	77	50634	Screw, Taptite, 5/16-18 x 3/8 In.
32	121954	*Screw, Hex Hd, 1/4-20 x 2 In.	78	57299	Blade
33	300844	Retainer, Belt	79	2483	Formed Washer
34	271166	Nut, Keps, No. 10-24 Thd.	80	39573	Screw, Hex Hd, 3/8-24 x 1 In.
35	300491	Idler Arm Assy. (Incl. Nos. 38 & 39)	81	70582	Decal, Caution
36	9413534	Locknut, 3/8-16 Thd.	82	122007	*Screw, Hex Hd, 5/16-18 x 3/4 In.
37	300180	Shoulder Bolt	83	57444	Wire Tie
38	41601	Rivet, Brake Pad	84	180077	*Screw, Hex Hd, 5/16-18 x 3/4 In.
39	41471	Brake Pad	85	300179	Bracket, Idler
40	996416	*Flatwasher, 3/8 In.	86	44108	Nut, Hex, Wide Fl. 5/16-18 Thd.
41	300683	Spring, Clutch	87	120393	Flatwasher, 11/32 In. Ly.
42	57326	Clutch Cable	88	300181	Brake Bracket Assy. (Incl. 39 & 89)
43	57818	Chute Guard	89	135624	Rivet, Brake Pad
44	52456	Retainer, Cable	90	300316	Rod, Brake Release
45	57322	Shoulder Bolt	91	300345	Screw, Taptite, 5/16-18 x 1 1/8 In.
46	57321	Spring			

*Standard Hardware Items - May Be Purchased Locally.

39" RIDING MOWER MODEL 3560-93



Key No.	Part No.	Description
1	300133	Ammeter
2	300626	Key, Ignition
3	48140	Locknut (Switch part)
4	138557	Lockwasher (Switch Part)
5	300687	Switch, Ignition
6	49211	Fuse
7	301489	Wire Harness Assembly
8	57552	Battery Rod
9	57551	Bracket, Battery, Hold-Down
10	271172	*Nut, Keps, 1/4-20 Thd.
11	55511	Ground Wire
12	52936	Battery
13	120854	*Screw, Hex Hd, 1/4-20 x 3/8 In.
14	120392	Flatwasher, 1/4 In.
15	120380	Lockwasher, Split

Key No.	Part No.	Description
16	120375	*Nut, Hex, 1/4-20 Thd
17	120368	*Nut, Hex, 5/16-24 Thd.
18	138485	*Washer, Ext., Shakeproof, 5/16 In.
19	187745	*Screw, Hex Hd, 1/4-20 x 3/8 In.
20	9424215	Locknut, Hex, 1/4-20 Thd
21	53716	Solenoid
22		Engine Part
23	54888	Retainer, Wire
24	41482	Wire Clip, Press
25	56189	Lead Wire, Headlight
26	50668	Screw, Hex Wa. Hd, No. 10-14 x 1/2 In.
27	52572	Bulb, Headlight
28	52571	Bezel, Headlight
29	52570	Lens, Headlight

*Standard Hardware Items - May Be Purchased Locally.