

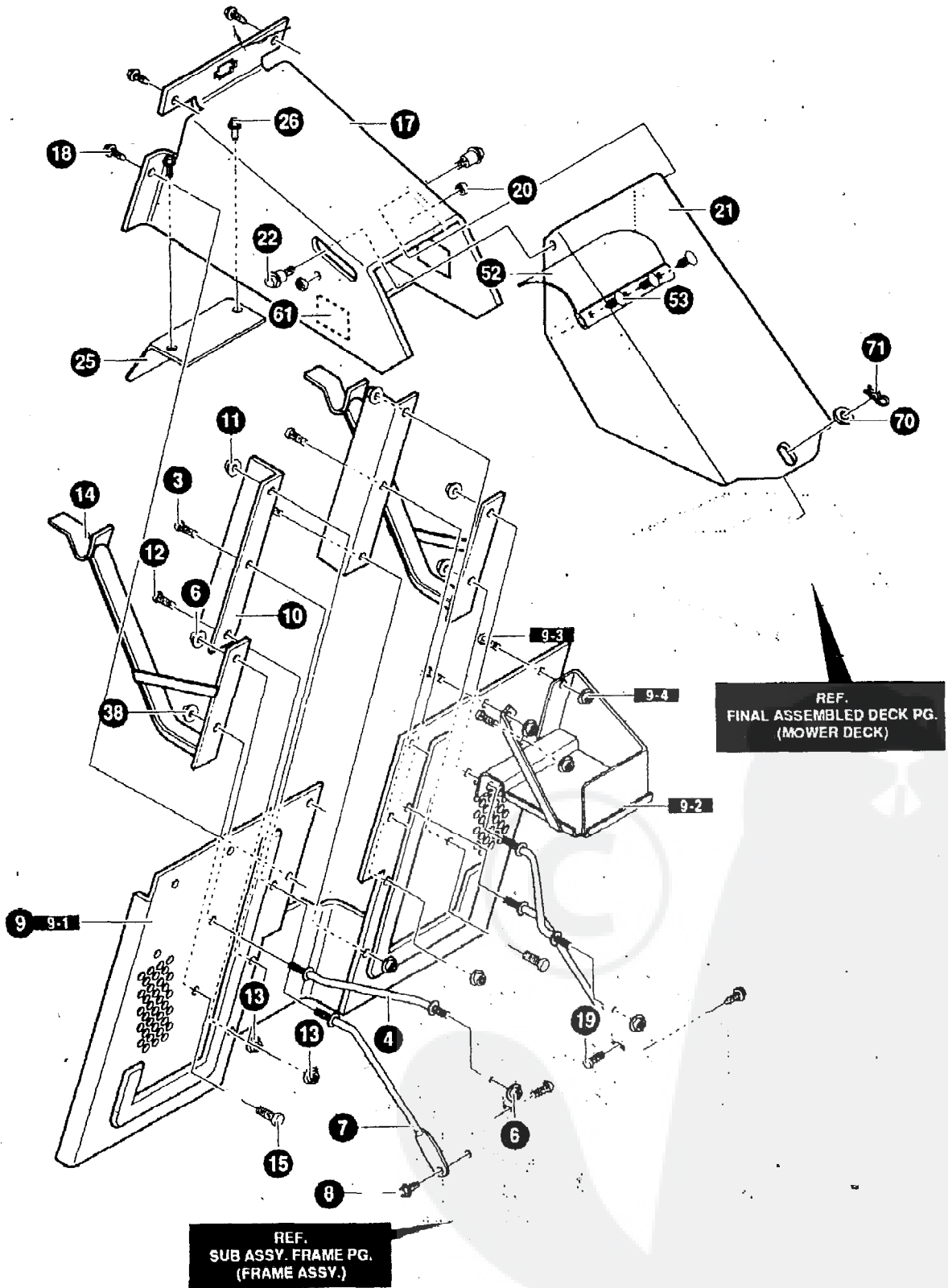
REF.
CHASSIS REAR PG.
(SEAT DECK ASSY.)

NOTE. ALWAYS USE ORIGINAL EQUIPMENT PARTS, . . .
Use of service/replacement parts other than original
equipment parts may void your warranty

ALL UNNUMBERED
ITEMS ARE INTERCHANGEABLE
WITH OPPOSITE SIDE

341317B

KEY NO.	PART NO.	DESCRIPTION	QTY
1	95432-853	BRACKET/HOOD RH	1
2	95433-853	BRACKET/HOOD LH	1
3	710079	SCREW, 5/16-18X.75HHWATAPSGIBP	4
4	95427	DASH	1
5	710282	SCREW, 1/4-14X.75PHPANTAPABBL	2
8	180020	SCREW, 1/4-20X.75 HHC	2
9	120392	WASHER, FLAT .281X.63X.065	4
10	780029	1/4-20 HEX NYLOCK NUT #71035	1
11	341569-860	ASM. LOWER CONSOLE	1
11-1	95425	TOWER, LOWER DASH	1
11-2	95426	SUPPORT, STEERING/PTO NLT	1
11-3	710264	SCREW, 1/4-20X.50 WAHHTAP	4
11-4	95406	ROD, DASH BRACE	1
11-5	710264	SCREW, 1/4-20X.50 WAHHTAP	2
12	710079	SCREW, 5/16-18X.75HHWATAPSGIBP	4
15	94638-860	PANEL, ACCESS	1
16	710196	SCREW, 1/10-24X.500	2
17	328278	H O O D	1
18	302670	LENS, HEADLAMP	1
19	308492	FOIL, LENS REFLECTOR	1
20	322700	DECAL, TAPE H14 8MIL VINYL	1
21	301452	FOIL, HEAT REFLECTOR	2
22	300317	PIN, CLEVIS .375 DIA. X1.64 LG	2
23	710343	PIN, HAIR .38 DIA X1.66 LG	2
24	6711	WASHER, PLASTIC .315X.75X.064	4
25	95404	BUSHING, STEERING SHAFT	1
	711107	OPERATOR'S MANUAL (NOT SHOWN)	

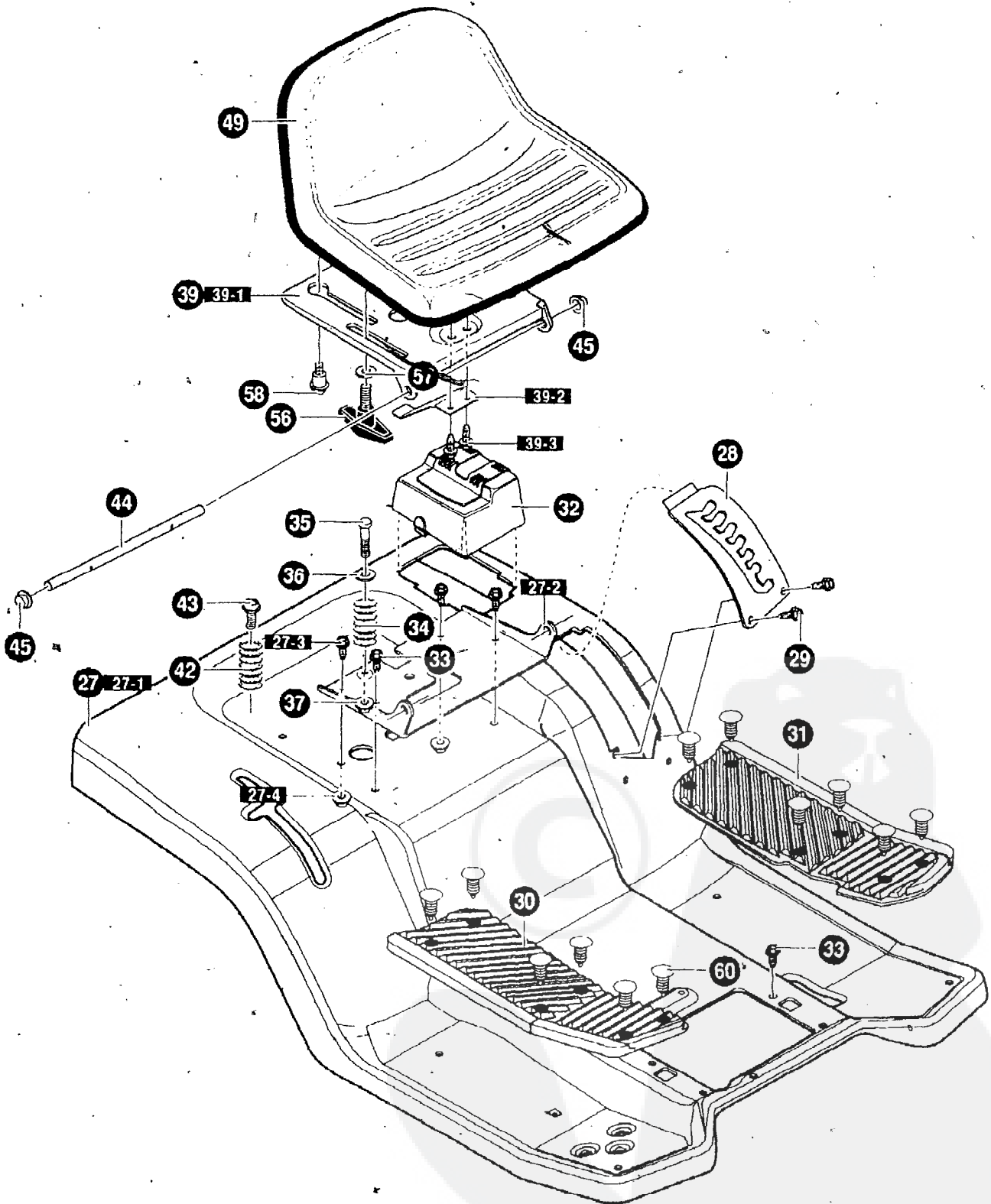


NOTE: ALWAYS USE ORIGINAL EQUIPMENT PARTS.
 Use of service/replacement parts other than original
 equipment parts may void your warranty.

ALL UNNUMBERED
 II EMS ARE INTERCHANGEABLE
 WITH OPPOSITE SIDE

340926C

KEY NO.	PART NO.	DESCRIPTION	QTY
3	710079	SCREW, 5/16-18X.75	2
4	9 4 6 2 5	ROD, BRACE	2
6	45171	NUT, 3/8-16 HWDFL WHIZ-LOCK	4
7	94231	ROD, BRACE	2
8	7 1 0 0 7 9	SCREW, 5/16-18X.75HHWATAP	2
9	341493-853	BACK PLATE/BATTERY ASSEMBLY	1
9-1	94569	BACK PLATE ASSEMBLY	1
9-2	94563	BATTERY TRAY WELD ASM.	1
9-3	180073	SCREW, 5/16-18X.50HHC	3
9-4	45174	NUT, 5/16-18 HEXWDFLLK WHIZ	3
10	94232-853	BRACE, BACK PLATE	2
11	45171	NUT, 3/8-16 HWDFL WHIZ-LOCK	2
12	3.28154	SCREW, 5/16-18X1.0WDFLLK	4
13	45174	NUT, 5/16-1'8 HEXWDFLLK WHIZ	4
14	94637-853	ASSY, COLLECTOR SUPPORT	2
15	328154	SCREW, 5/16-18X1.0WDFLLK	2
17	94295-853	CHUTE WELD ASM. UPPER	1
18	71 0079	SCREW, 5/16-18X.75HHWATAP	4
19	57101	BOLT, 5/16-18X .75 CARR	2
20	45174	NUT, 5/16-18 HEXWDFLLK WHIZ	2
21	94970-853	CHUTE MIDDLE ASSY	1
22	51601	BOLT, 500X.453 HSH 3/8-16	2
25	94263-853	COVER, T-AXLE SHIELD	1
26	710264	SCREW, 1/4-20X.50 WAHHTAP	2
52	94264	FLAP,CHUTE REBA	1
53	309235	RATCHET FASTENER	3
61	318197	PAD, ADHESIVE 1.00X1.50X12	2
70	710116	WASHER, FLAT .281X .63X .065	1
71	710343	PIN, HAIR .38DIA X1.64LG	1

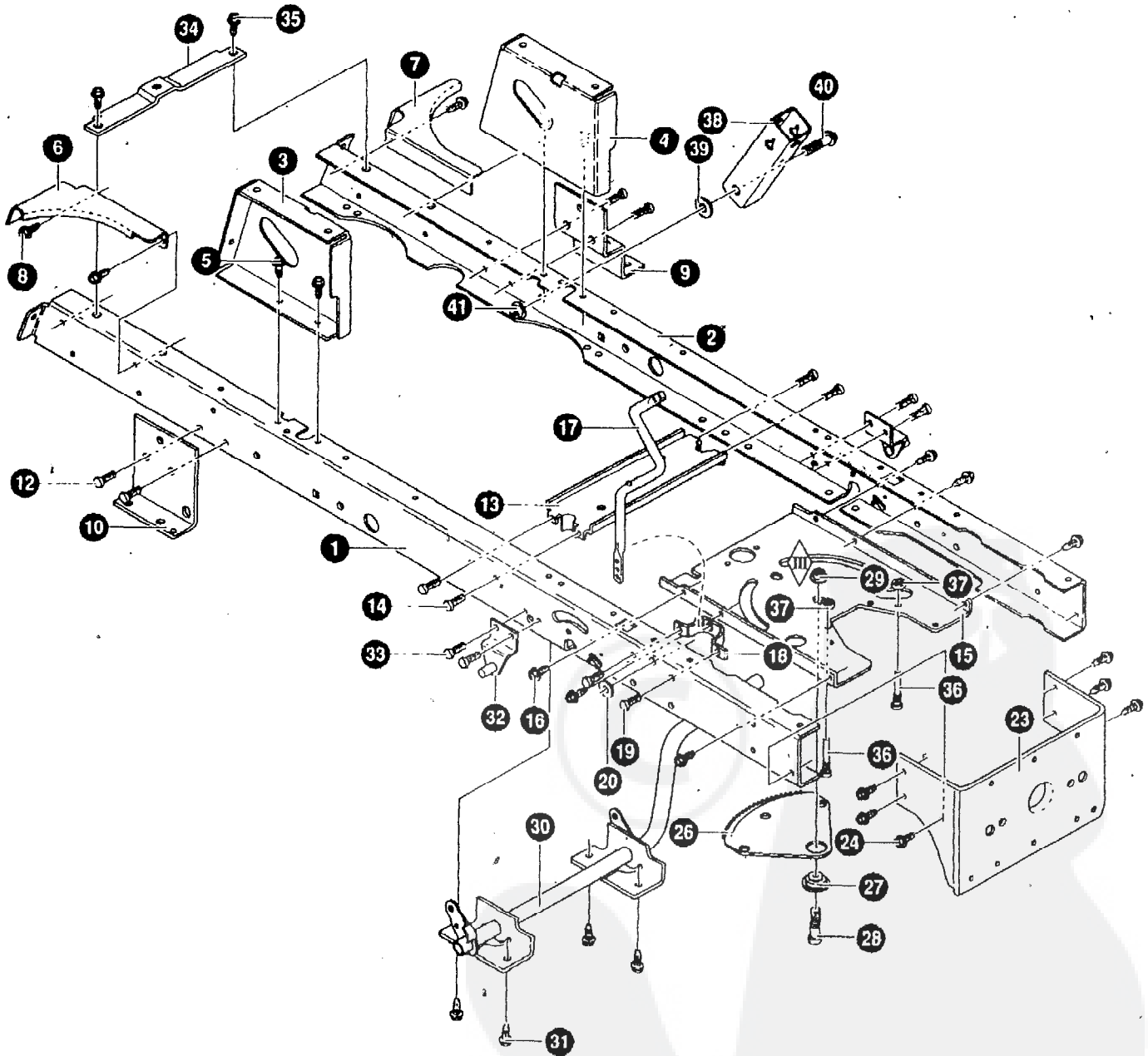


NOTE: ALWAYS USE ORIGINAL EQUIPMENT PARTS
Use of service/replacement parts other than original
equipment parts may void your warranty

ALL UNNUMBERED
ITEMS ARE INTERCHANGEABLE
WITH OPPOSITE SIDE

340926C

KEY NO.	PART NO.	DESCRIPTION	QTY.
27	341496-860	ASM.SEAT DECK PEDAL GEAR REBA	1
27-1	94204	SEAT DECK,GEAR DRIVE	
27-2	94153	BRACKET, PIVOT SEAT	
27-3	710279	SCREW, 5/16-18X .625	2
27-4	710205	NUT, 5/16-18 WDFLLK (15X88)	2
28	94243-860	PLATE, LIFT DETENT	1
29	710196	SCREW, 1 0-24X.500TRSEGI	2
30	95409	FOOTREST PAD RH	1
31	95408	FOOTREST PAD LH	1
32	94200	COVER, BATTERY	1
33	710079	SCREW, 5/16-18X.75HHWATAP	3
34	710136	SPRING, COMPRESS 4.57LG X 1.17	1
35	710093	BOLT,SHOULDER 1/4-20NC-2A(9X55)	1
36	94155	WASHER CUP ZINC	1
37	710280	NUT, 1/4-20 WDFLLK (15X89)	1
39	341494-860	ASSY. SEAT SUPPORT	1
39-1	94154	SUPPORT, SEAT	1
39-2	94057	SPRING - LEAF	1
39-3	710264	SCREW, 1/4-20X.50 WAHHTAP	2
42	710109	SPRING,COMPRESS 2.43LG (164X30)	2
43	710079	SCREW; 5/16-18X.75HHWATAP	2
44	94156	ZINC HINGE SEAT PIVOT	1
45	710192	NUT, PUSH CAP .375 (28X23)	2
49	95415	SEAT	1
56	94160	BOLT, WING 5/16-18	2
57	710281	WASHER, FLAT.344X.62X.06	2
58	710101	BOLT, SHOULDER 5/16-18NC(9X56)	2
60	309235	FASTENER,RATCHET	12

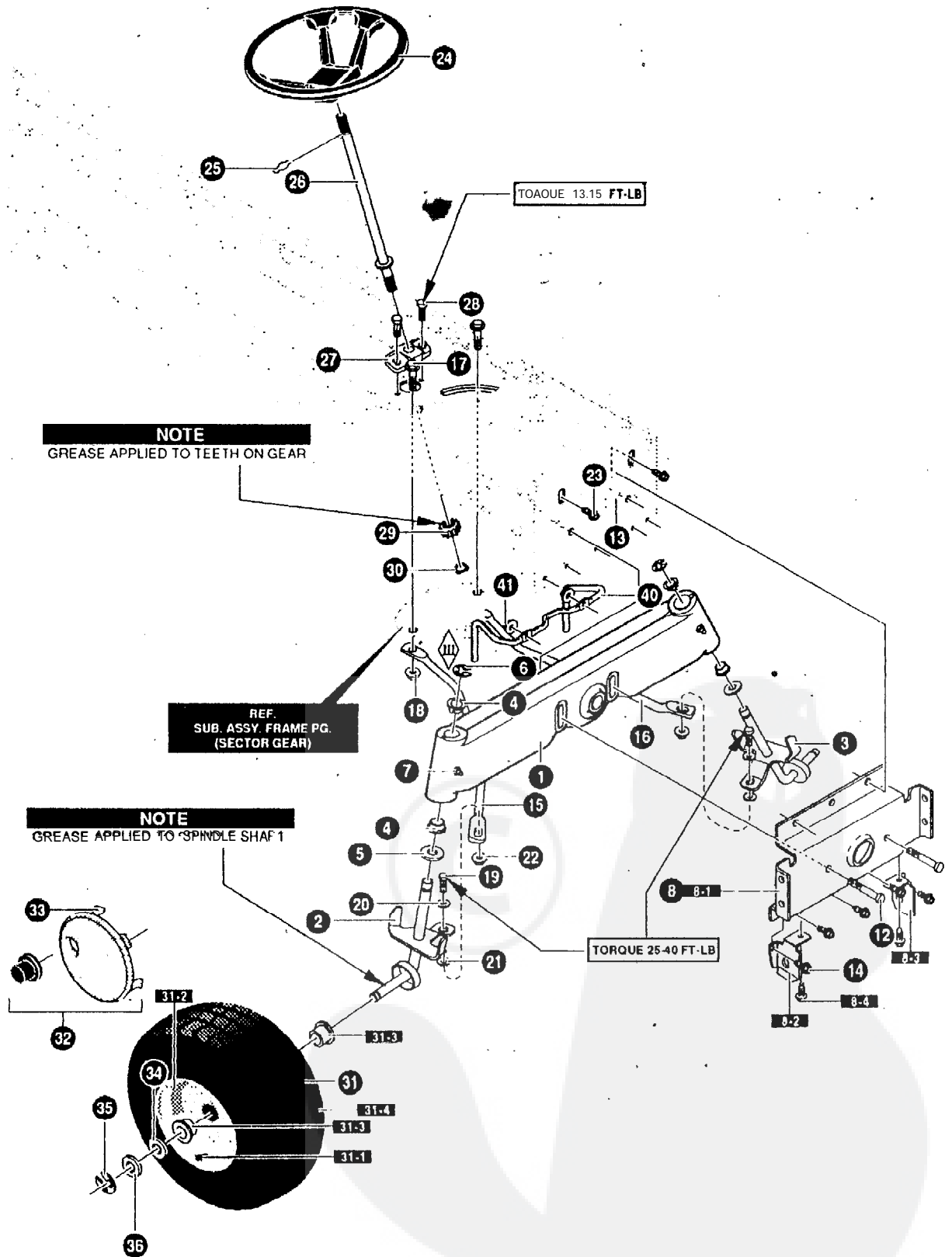


NOTE: ALWAYS USE ORIGINAL EQUIPMENT PARTS
 Use of servicereplacement parts other than original
 equipment parts may void your warranty

ALL UNNUMBERED
 ITEMS ARE INTERCHANGEABLE
 WITH OPPOSITE SIDE

340413A

KEY PART NO. NO.	DESCRIPTION	QTY
1 94564	FRAME,RAIL RH	1
2 94565	FRAME,RAIL LH	1
3 94634	SUPPORT,SEAT RH	1
4 94633	SUPPORT,SEAT LH	1
6 710079	SCREW, 5/16-18X.75HHWATAP	4
7 94562 94561	BRACE, BACKPLATE RH	1
	BRACE, BACKPLATE LH	1
a 710079	SCREW, 5/16-18X.75HHWATAP	4
9 94234	BRACKET,T/A RH-VST,LH-MST	1
10 94235	BRACKET,TRANSAXLE RH-MST	1
12 710079	SCREW, 5/16-18X.75HHWATAP	4
13 94237	ASM. IDLER MOUNT,FRONT	1
14 710079	SCREW, 5/16-18X.75HHWATAP	4
15 94003	PLATE,STEERING MOUNTING	1
16 710079	SCREW, 5/16-18X.75HHWATAP	6
17 94019	CRANK, PTO (DRILLED)	1
1a 94005	BRACKET, BELL CRANK	1
19 710079	SCREW, 5/16-18X.75HHWATAP	2
20 120395	WASHER, FLAT .469X .92X.065	1
23 94013	BRACKET, HANGER REAR	1
24 710079	SCREW, 5/16-18X.75HHWATAP	6
26 94121	GEAR, SECTOR	1
27 94123	BEARING, SECTOR GEAR	1
28 710312	SCREW, 5/16-18X1.00	1
29 710105	NUT, 5/16-18 HWDFLLK (15X113)	1
30 94241	ASM.CLUTCH/BRAKE PEDAL	1
31 710079	SCREW, 5/16-18X.75HHWATAP	4
32 94285	BRACKET SUPENSION ASM.	2
33 710079	SCREW, 5/16-18X.75HHWATAP	4
34 94566	BRACE, RAIL	1
35 710079	SCREW, 5/16-18X.75HHWATAP	2
36 93349	SCREW GUIDE 5/16-18	2
37 710204	NUT,5/16-18 HEXWDFLLK WHIZ PL	2
38 94015	BRACKET, PIVOT	1
39 a45	WASHER, FLAT.390X1.25X.119	1
40 710000	BOLT, .562X1.563 HSH 3/8-16	1
41 710140	NUT,3/8-16HWDFLLK MACK (15X84)	1



NOTE: ALWAYS USE ORIGINAL EQUIPMENT PARTS. Use of service/replacement parts other than original equipment parts may void your warranty.

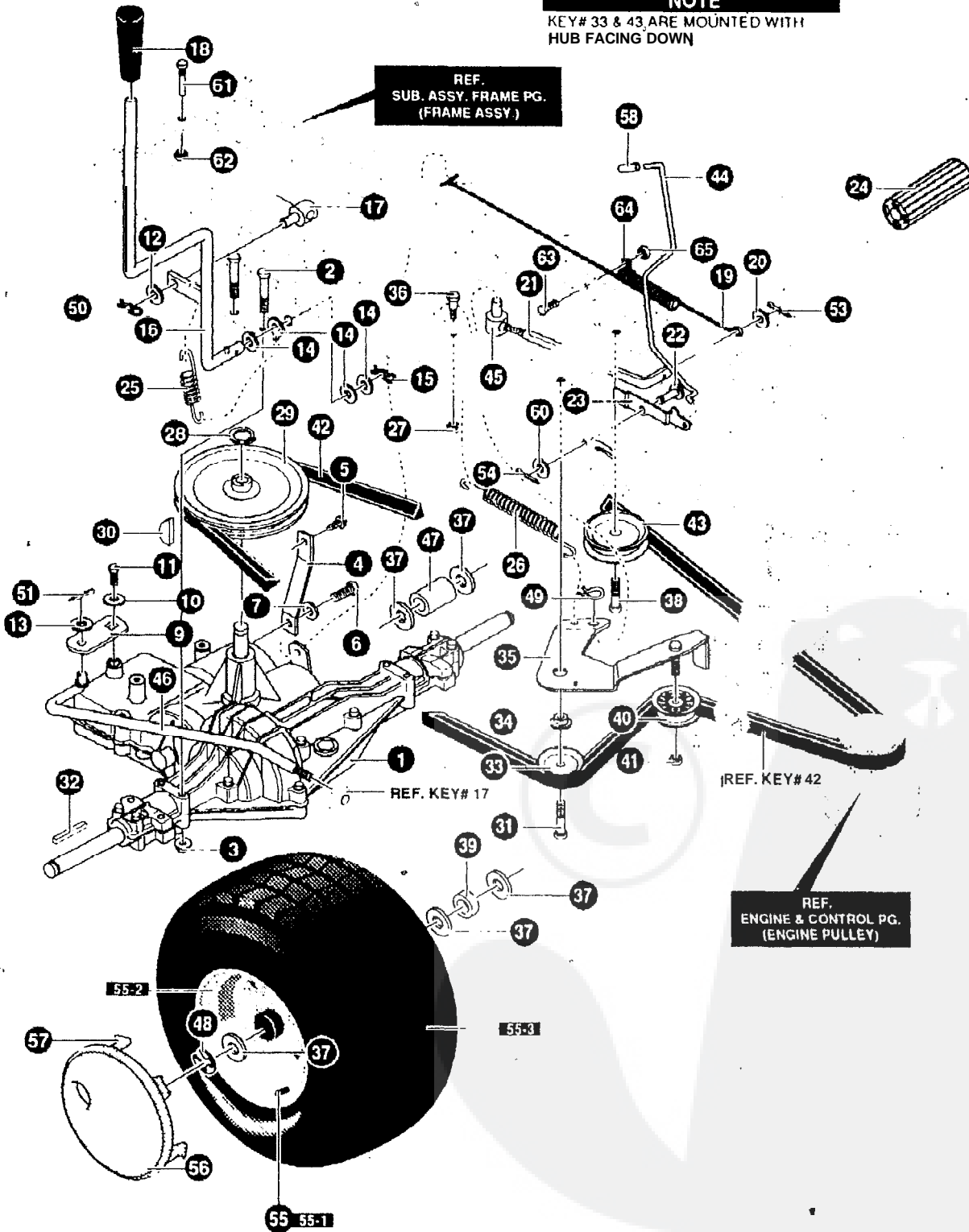
ALL UNNUMBERED ITEMS ARE INTERCHANGEABLE WITH OPPOSITE SIDE

340597A

KEY NO.	PART NO.	DESCRIPTION	QTY
1	95405-853	AXLE, CAST MACHINED	1
2	94 178-853	SPINDLE,RH MO#94178	1
3	94179-853	SPINDLE LH,WELD ASSEMBLY	.
4	92527	BEARING, SPINDLE	4
5	710129	WASHER, .766 ID X 1.62ID 16GA	2
6	710103	E-RING .574ID X .050/.750SH 11 X3	2
7	706	ZERK, GREASE FITTING	2
8	341491-853	ASM FRONT AXLE/DECK HANGER	
8-1	94007	HANGER, AXLE	
8-2	94290	HANGER,DECK RH	1
8-3	94289	HANGER,DECK LH	1
8-4	710079	SCREW, 5/16-18X.75HHWATAPSGIBP	2
12	180113	SCREW, 5/16-18X3.00	2
13	710205	NUT, 5/16-18 WDFLLK (15X88) Z	2
14	710079	SCREW, 5/16-18X.75HHWATAPSGIBP	2
15	94020-853	DRAG LINK RH	1
16	94021-853	DRAG LINK LH	1
17	7 1 0 4 4 0	BOLT,HHSH (9X57)	2
18	710140	NUT,3/8-16HWDFLLK MACK 15X84	2
19	710082	SCREW, 3/8-16X1.5	2
20	710083	WASHER, FLAT .391X1.00X.083	2
21	710142	WASHER, FLAT.406X.81X16GA	2
22	710140	NUT,3/8-16HWDFLLK MACK 15X84 Z	2
23	710079	SCREW, 5/16-18X.75HHWATAPSGIBP	3
24	95441	STEERING WHEEL	1
26	94127	SHAFT, STEERING	1
27	94124	BEARING-LOWER	1
28	710079	SCREW, 5/16-18X.75HHWATAPSGIBP	2
29	94122	GEAR PINNION	1
30	710102	RING, RET E.54ID.59SH(11X25)	1
31	692287	TIRE & RIM 15X6.0-6	2
31-1	3385 12	VALVE STEM	2
31-2	3385 17	RIM, CARLISLE	2
31-3	338513	BEARING	2
31-4	3385 16	TIRE, 15X6X6	2
34	710131	WASHER, FLAT .759ID (340435)	2
35	36625	RETAINING RING	2
36	710350	WASHER, FLAT .765X1.62X.065Z	2
40	94310	GUIDE-STACK PULLEY BELT	1
41	45174	NUT, 5/16-18 HEXWDFLLK WHIZ	2

NOTE
KEY# 33 & 43 ARE MOUNTED WITH HUB FACING DOWN

REF. SUB. ASSY. FRAME PG. (FRAME ASSY.)

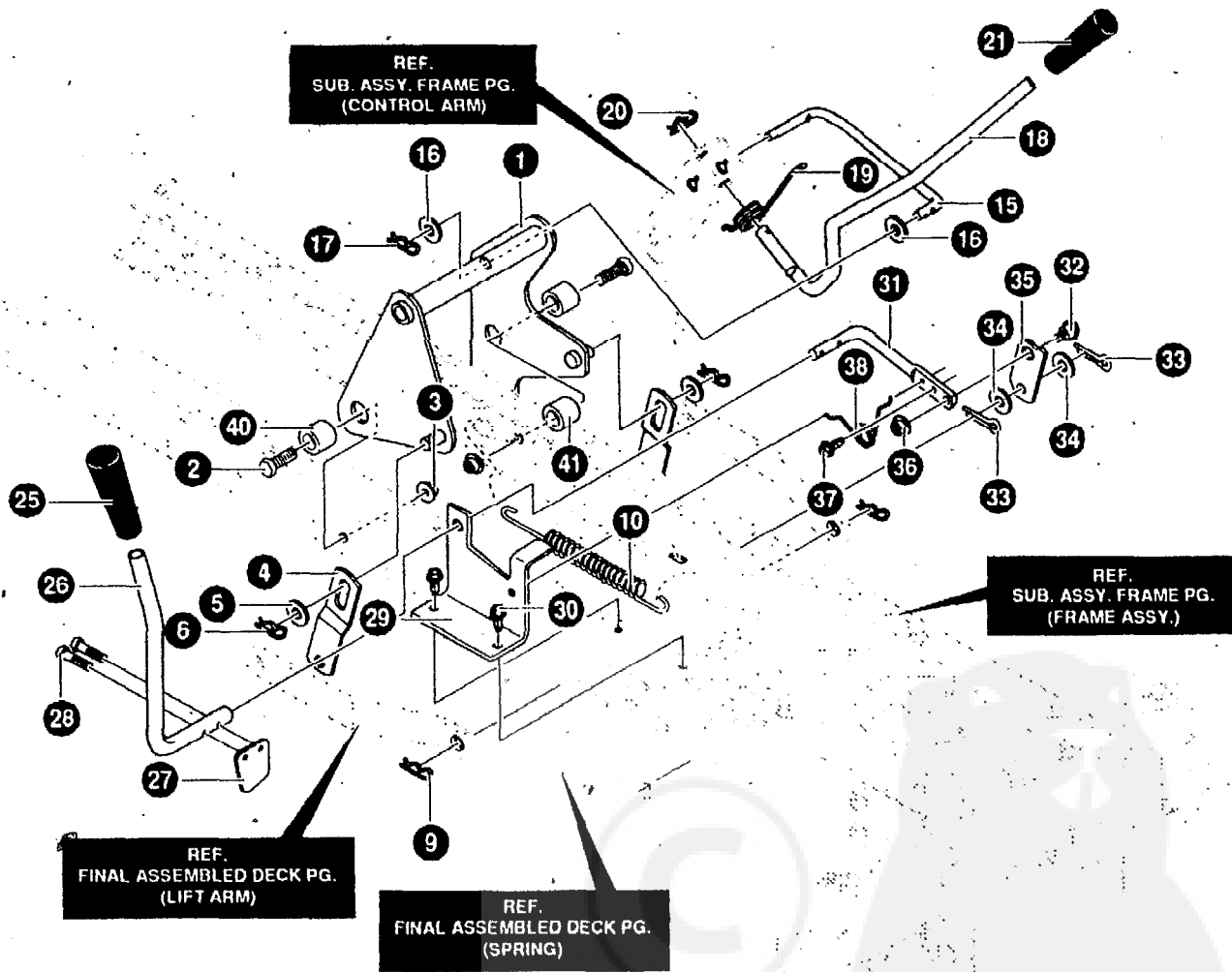


NOTE. ALWAYS USE ORIGINAL EQUIPMENT PARTS
Use of service/replacement parts other than original
equipment parts may void your warranty

ALL UNNUMBERED
ITEMS ARE INTERCHANGEABLE
WITH OPPOSITE SIDE

KEY NO.	PART NO.	DESCRIPTION	QTY
1		TRANSAXLE <u>MST206-512A</u>	1
2	180091	SCREW, 5/16-18X2.50	4
3	710205	NUT, 5/16-18 WDFLLK (15X88)	4
4	94620-853	BRACKET, STABILIZER	1
5	710079	SCREW, 5/16-18X.75HHWATAP	1
6	35498	SCREW, 5/16-18X.75 WAHHTAP	1
7	120638	WASHER, HVSPTLK .328X.60X.09	1
9	94227	BRKT, SHIFT REBA FENDER HT	1
10	57157	WASHER, .750X.250 SP-TRANSAXLE	1
11	56255	SCREW, 1/4-28X .75 NYL	1
12	9964 16	WASHER, FLAT .391X1.00X.125	1
13	120394	WASHER, FLAT .406X .81X.065	1
14	996425	WASHER, FLAT 515X.88X.064	4
15	56180	PIN, HAIR .53DIAX1.62LG	1
16	94242	SHIFT LEVER, MST GEAR DRIVE	1
17	21920	NUT, ADJ. 3/8-16TAP	1
18	92697	GRIP, GREY HEIGHT AOJ	1
19	95424	SPRING, BRAKE 35.00	1
20	35214	WASHER, FLAT .328X1.06X.062	1
21	94573	ROD, CLUTCH	1
22	49332	PIN, CLEVIS 3750X.81 LG	1
23	94045	LATCH, PARK BRAKE	1
24	21544	PEDAL, BRAKE/CLUTCH STD NLT	1
25	35410	SPRING, .071 X .62 X 4 37	1
26	710139	SPRING, TENS .09X X5.	1
27	780029	1/4-20 HEX NYLOCK NUT #71035	1
28	22053	RING, RETEX .58X.035TRU5100-62	1
29	94571	PULLEY, 9.0 OD V4L T/A	1
30	50795	KEY, HI-PRO 606 .75DIAX.187WD	1
31	710082	SCREW, 3/16-16X1.5 HHCFLTHR5	1
32	52928	KEY, SQUARE 187SQX2.25LG	2
33	35374	PULLEY, IDLER V4L 3.06X .62	1
34	95423	SPACER, SHOULDER	1
35	94238-853	ASSY, IDLER ARM TRACTION	1
36	310088	BOLT, .250X .312 HSH 1/4-20	1
37	710131	WASHER, FLAT .775ID	6
38	180124	SCREW, 3/16-16X1.25	1
39	95418	SPACER, .87X 1 25 WHEEL	2
40	91179	PULLEY	1
41	45905	NUT, 3/8-16 HWDFLLK MACK	1
42	94608	BELT, V 4L 114.12	1
43	35374	PULLEY, IDLER V4L 3.06X .62	1
44	94568	PARK BRAKE CONTROL ROD	1
45	710059	NUT, 5/16-18X3/8 ADJUSTING	1
46	94570	ROD, SHIFT LINK	1
47	95419	SPACER, .87 X 2.25 WHEEL	1
48	36625	RING, RETEX .57X.05TRU5133-75	2
49	56180	PIN, HAIR .53DIAX1.62LG	1
50	340470	PIN, HAIR .38DIAX1.64+LG	1
51	121222	PIN, COTTER .090 DIAX .75LG	1
53	121222	PIN, COTTER .090 DIAX .75LG	1
54	121222	PIN, COTTER .090 DIAX .75LG	1
55	692289	TIRE & RIM	2
55-1	3385 12	VALVE STEM	1
55-2	338524	RIM	1
55-3	338549	TIRE 18X8.5X8	1
58	335980	CAP. DUMP VALVE ROD 25IDX.75	1
60	120394	WASHER, FLAT 406X.81X.065	1
61	20619	SCREW GUIDE 5/16-18	1
62	710204	NUT, 5/16-18 HEXWDFLLK WHIZ	1
63	180016	SCREW, 1/4-20X.50	1
64	57569	RETAINER, WIRE	1
65	51335	NUT, 1/4-20 WHIZ-LOCK	1

. CONTACT YOUR NEAREST TRANSAXLE DEALER FOR PARTS AND SERVICE.

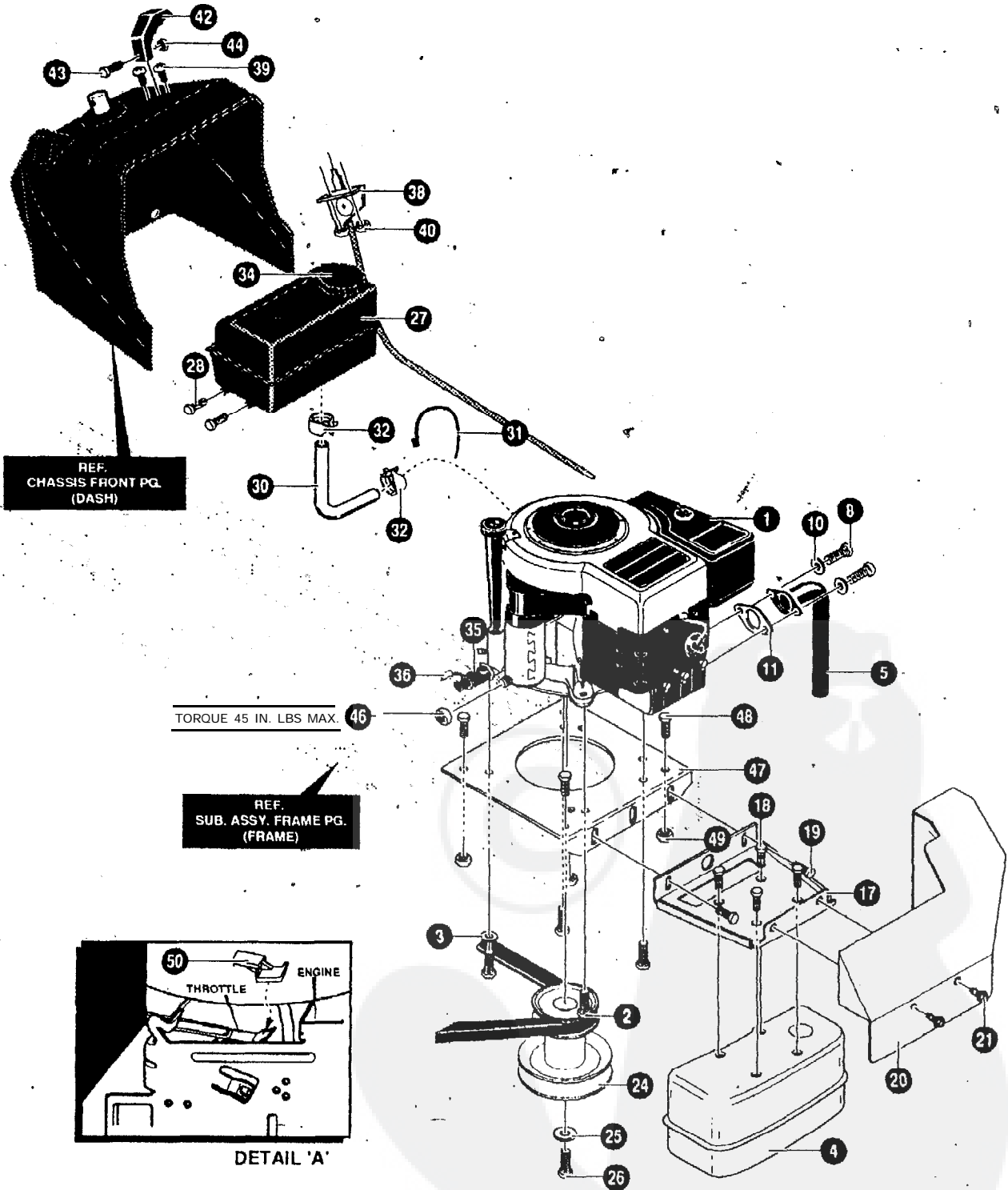


NOTE: ALWAYS USE ORIGINAL EQUIPMENT PARTS
Use of service/replacement parts other than original
equipment parts may void your warranty.

ALL UNNUMBERED
ITEMS ARE INTERCHANGEABLE
WITH OPPOSITE SIDE

3408596

KEY NO;	PART NO.	DESCRIPTION	QTY
1	94299-853	LIFT ARM WELD ASSEMBLY	1
2	710222	SCREW, 1/2-13X1.50 (1X127)	2
3	710223	NUT, 1/2-13 LOCK (15X41)	2
4	94262-853	BRACKET, LIFT LINK	2
5	710119	FLATWASHER (17X91)	2
6	710108	PIN; HAIR (31X4)	2
9	710108	PIN, HAIR (31X4)	2
10	710235	SPRING, EXTENSION 9.82X1.01OD	1
15	94276	LINK, LIFT HANDLE	1
16	710119	FLATWASHER (17X91)	2
17	8260	PIN, HAIR .091DIAX1.66LG	1
18	94029	HANDLE, LIFT	1
19	710111	TORSION SPRING .657LG(166X40)	1
20	710108	PIN, HAIR (31X4)	1
21	92697	GRIP, BLACK	1
25	92698	GRIP, BLACK	1
26	94826	PTO LEVER	1
27	94022	PADDLE, SWITCH	1
28	710137	SCREW, THD FORMING	2
29	94018-853	BRACKET, PTO	1
30	710079	SCREW, 5/16-18X.75HHWATAP.	2
31	94017	LEVER, PTO	1
32	710098	BOLT.50X.75 HSSH 3/8-16Z 9X39	1
33	36368	HAIR PIN	2
34	710115	FLATWASHER .518X.87X1617X102	2
35	94004	LINK PTO ZINC	1
36	710140	NUT, 3/8-16HWDFLLK MACK (15X84)	1
37	710079	SCREW, 5/16-18X.75HHWATAP	1
38	710141	TORSION SPRING .33LG(166X39)	1
40	94309	SPACER.513 ID X .880 OD	2
41	56150	SPACER, SLEV .94X1.13X.531	1

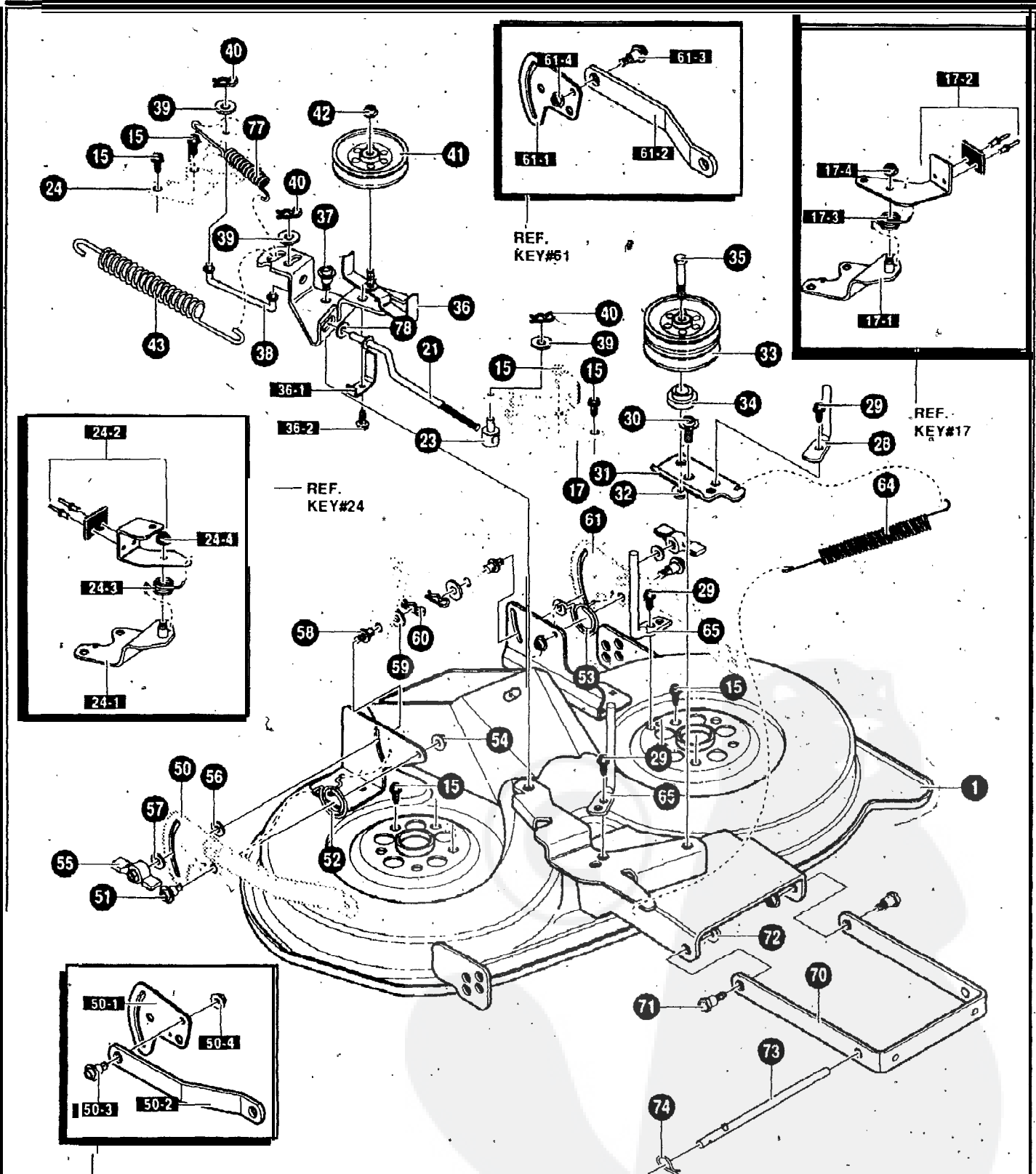


NOTE: ALWAYS USE ORIGINAL EQUIPMENT PARTS. Use of service/replacement parts other than original equipment parts may void your warranty.

ALL UNNUMBERED ITEMS ARE INTERCHANGEABLE WITH OPPOSITE SIDE

3416068

KEY NO.	P A R T NO.	DESCRIPTION	Q T Y
1.	(289707-0121-01) ENGINE	12.5HPBSIC NON QUIET (SEE ENGINE MANUAL)	1
2 :	50947	SCREW, 318-16X1.25	4
3	138469	WASHER, EXLK .384X.69X.04	1
4	94902	MUFFLER, SUPER LOW TONE 12.5	1
5	94900	EXHAUST PIPE 12.5 B&S	1
8	180077	SCREW; 5/16-18X.75 HHC	2
10	120638	WASHER, HVSPTLK .328X.60X.09	2
11	46708	GASKET, MUFFLER	1
17.	94901-853	BRACKET MUFFLER 12.5HP.	1
18	44811	SCREW, 1/4-20X.75	4
20	94904-853	HEAT SHIELD WELD ASSY.	1
21	710079	SCREW, 5/16-18X.75HHWATAPSGI6P	2
24	94308	PULLEY, ENGINE 4.89X6.75X5.4OFF	1
25	120383	WASHER, REGSPTLK.459X.78X.12.	1
26	433146	SCREW, 7/16-20X4.25	1
27	309853	TANK, FUEL 1.5 WO/SENSOR CLEAR	1
28	710246	SCREW, 15TPIX. PANHTAP	4
30	50118	TUBING, .25X.50X BULK GAS LINE	1 2"
31	57444	TIE, CABLE BLACK	1
32	47345	CLAMP, HOSE SCREW	1
34	12501	CAP, FUEL 2.5" THROAT	1
35	325547	OIL DRAIN VALVE ASSEMBLY	1
36	327422	CAP, OIL DRAIN VALVE	1
36	94906	THROTTLE CONTROL	1
39	155941	SCREW, 10-24X.63	2
40	308459	NUT, #10-24	2
42	300508	KNOB, THROTTLE CONTROL	1
43	159585	SCREW, #8-32X.38 PHPNMA	1
44	120622	NUT, #8-32 REGHX	1
46	124818	NUT, 1/4-20 REGHXJAM	1
47	94006-853	PLATE, ENGINE	1
48	710079	SCREW, 5/16-16X.75	4
49	710205	NUT, 5/16-18 WDFLLK (15X88)	4
50	94951	CLIP, SPEED	1

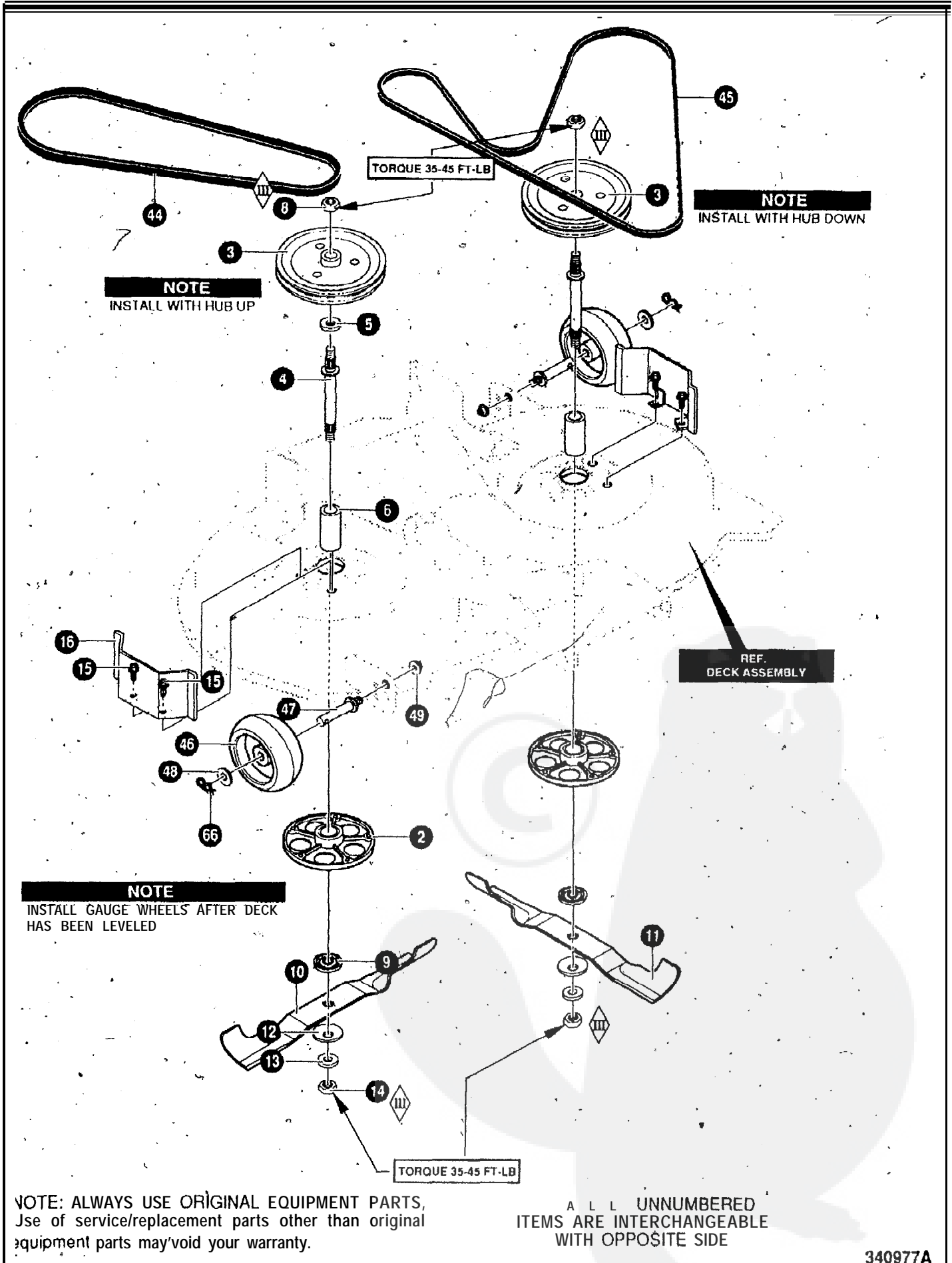


NOTE: ALWAYS USE ORIGINAL EQUIPMENT PARTS. Use of service/replacement parts other than original equipment parts may void your warranty.

ALL UNNUMBERED ITEMS ARE INTERCHANGEABLE WITH OPPOSITE SIDE

340977A

KEY NO.	PART NO.	DESCRIPTION	QTY
1	94303-853	WELD ASSEMBLY DECK	1
15	710265	SCREW, 3/8-16X1.00 WAHHSPTAPPL	10
17	94665-853	BRAKE ARM ASSEMBLY LH	1
17-1	94293	BRAKE SUPPORT ASSEMBLY LH	1
17-2	94291	BRAKE ARM ASSEMBLY LH	1
17-3	710110	SPRING, TORSION (166X27)	1
17-4	710205	NUT, 5/16-18 WDFLLK (15X88)	1
21	94277	LINK, BRAKE LH	1
23	21920	NUT, ADJ. 3/8-16TAP	1
24	94664-853	BRAKE ARM ASSEMBLY RH	1
24-j	94294	BRAKE SUPPORT ASSEMBLY RH	1
24-2	94292	BRAKE ARM ASSEMBLY RH	1
24-3	710077	SPRING, TORSION	1
24-4	710205	NUT, 5/16-18 WDFLLK (15X88)	1
28	94274	GUIDE, BELT REBA	1
29	710114	SCREW, 5/16-18 .50HHTAP	3
30	710098	BOLT, 50X.75 HSSH 3/8-16Z 9X39	1
31	94261-853	ARM, DOUBLE IDLER	1
32	710140	NUT, 3/8-16HWDFLLK MACK 15X84	1
33	94279	PULLEY, IDLER DOUBLE VEE	1
34	94269	SPACER, REBA DECK	1
35	180138	SCREW, 3/8-16X3.00 HHC	1
36	94973-853	IDLER ARM ASSEMBLY	1
36-1	94312	SPRING, -GUIDE BELT	1
36-2	710264	SCREW, 1/4-20X.50 WAHHTAP	1
37	710098	BOLT, 50X.75 HSSH 3/8-16Z 9X39	1
38	94278	LINK, BRAKE RH	1
39	316079	WASHER, FLAT .406X .82X.040	1
40	710343	PIN, HAIR .38 DIA X 1.64 LG.	3
41	94280	PULLEY, V IDLER 4"	1
42	710140	NUT, 3/8-16HWDFLLK MACK 15X84	1
43	710234	SPRING, EXTN 5.40X.7140D	1
50	341593-853	PLATE - SUSPENSION ASSY	1
50-1	94128	PLATE - SUSPENSION	1
50-2	94055	SUSPENSION BRKT REAR	1
50-3	710095	SHOULDER BOLT 3/8-16 (9X52)	1
50-4	710140	NUT, 3/8-16 MACK (15X84)	1
51	710094	BOLT, SHOULDER .375 (9X51)	2
52	710112	SPRING, TORSION .68LG RH (166X42)	1
53	710113	SPRING, TORSION .68LG LH (166X43)	1
54	710140	NUT, 3/8-16HWDFLLK MACK (15X84)	2
55	94068	KNOB	2
56	94137	PAD, FRICTION	2
57	710195	WASHER (17X45)	2
58	94064	PIN, HANGER	2
59	710116	WASHER, FLAT .550X1.00X11 (17X103)	2
60	710108	PIN, HAIR (31X4)	2
61	341594-853	ASM. PLATE REAR&US BRKT LH	1
61-1	94128	PLATE - SUSPENSION	1
61-2	94055	SUSPENSION BRKT REAR	1
61-3	710095	SHOULDER BOLT 3/8-16 (9X52)	1
61-4	710140	NUT, 3/8-16 MACK (15X84)	1
64	710233	SPRING, EXTN 4.20X.750D	1
65	94275	GUIDE BELT	2
70	94058-853	BRACKET, FRT SUSPENSION	1
71	710094	BOLT, SHOULDER .375 (9X51)	2
72	710140	NUT, 3/8-16HWDFLLK MACK (15X84)	2
73	94158	ZINC ROD,, HANGER	1
74	710108	PIN, HAIR (31X4)	1
77	710658	SPRING, EXTENSION	1
78	996416	WASHER, FLAT .391X1.00X.125	1



NOTE
INSTALL WITH HUB UP

NOTE
INSTALL WITH HUB DOWN

REF.
DECK ASSEMBLY

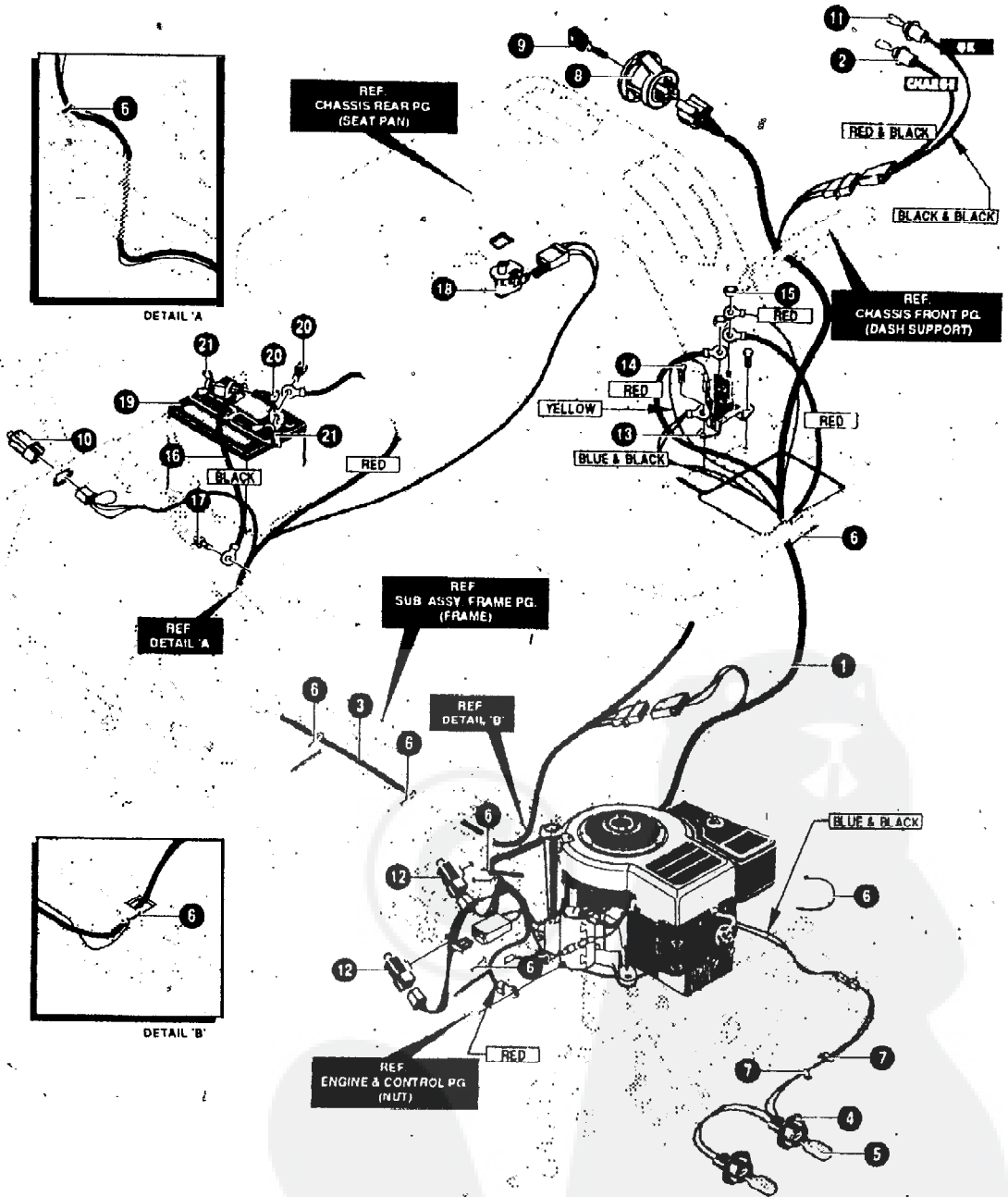
NOTE
INSTALL GAUGE WHEELS AFTER DECK
HAS BEEN LEVELED

TORQUE 35-45 FT-LB

NOTE: ALWAYS USE ORIGINAL EQUIPMENT PARTS.
Use of service/replacement parts other than original
equipment parts may void your warranty.

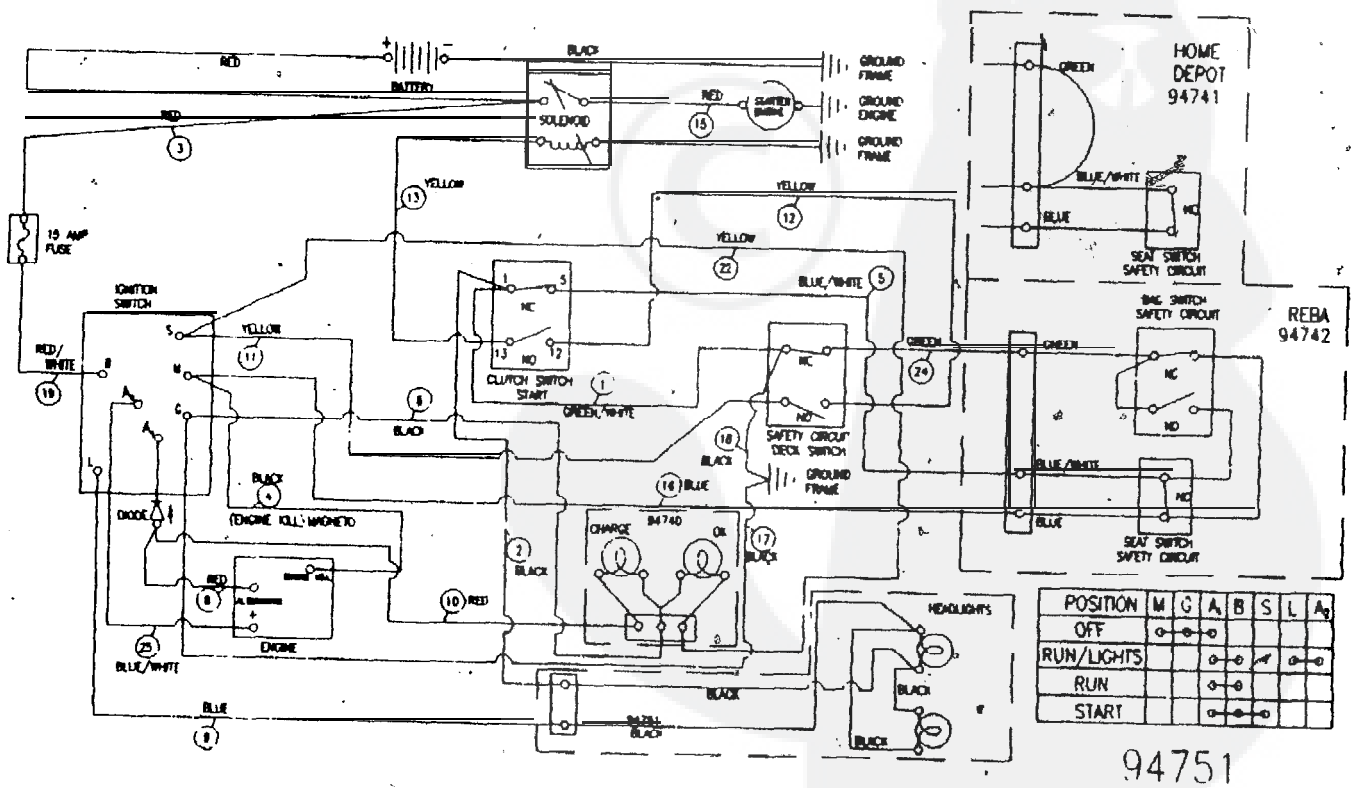
ALL UNNUMBERED
ITEMS ARE INTERCHANGEABLE
WITH OPPOSITE SIDE

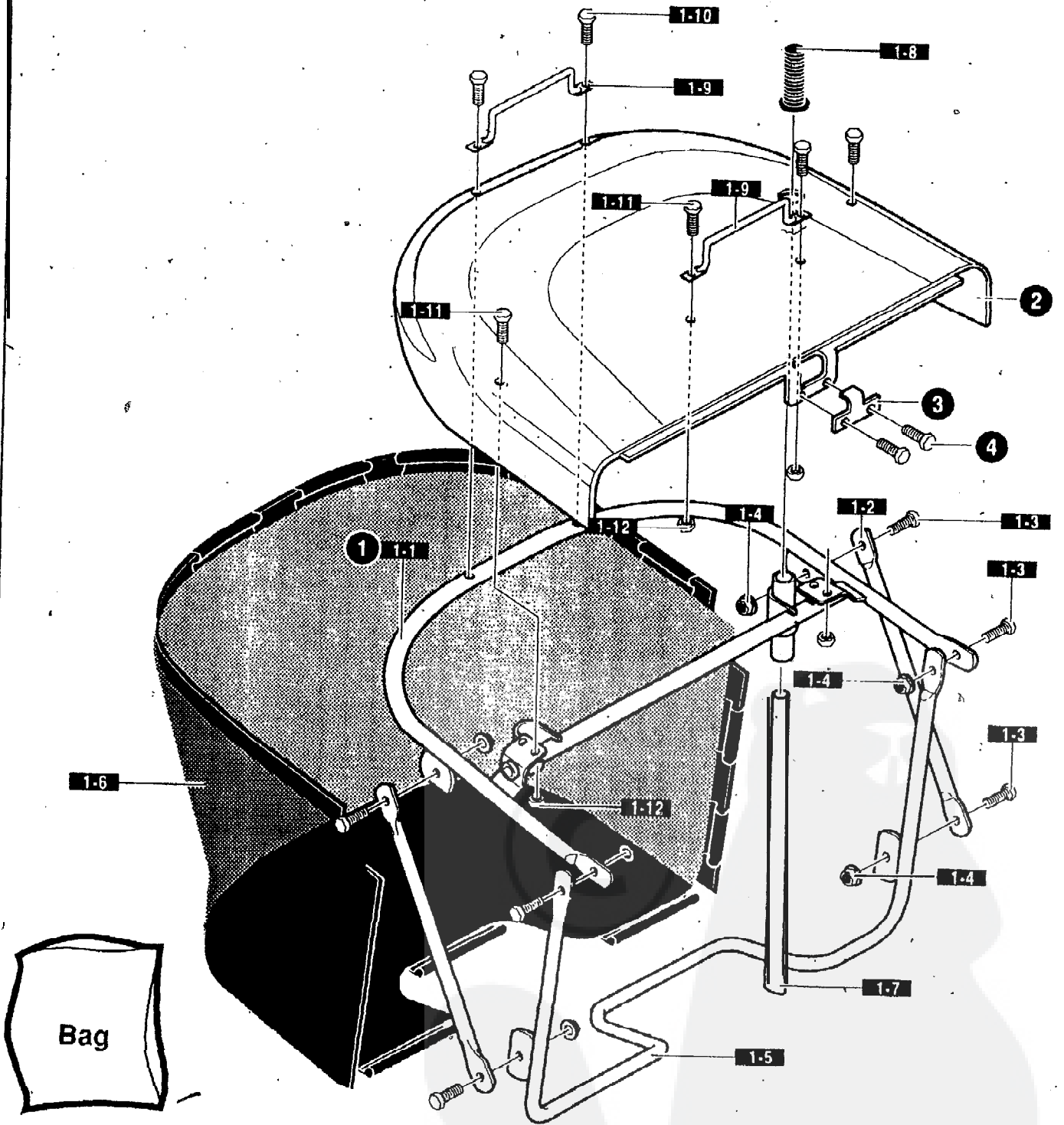
KEY NO.	P A R T NO.	DESCRIPTION	QTY	
2	94305	ASM.JACKSHAFT HOUSING W/VENTS	2	
3	92425	PULLEY, DECK REBA	2	
4	91922	JACKSHAFT; 7.76LG-9/16-18TH	2	
5	710117	WASHER, FLAT .625X1.00X.188	1	
6	91903	SPACER	2	
8	710408	NUT, 9/16-18 CTLK (15X101)	2	
	9	94207	ADAPTER, DECK/BLADE	2
10	94208	BLADE, 40" RH REAR DISCHARGE	1	
11	94209	BLADE, 40" LH REAR DISCHARGE	1	
12	710118	WASHER, FLAT.625X1.7517X1.66	2	
13	710117	WASHER, FLAT .625X1.00X.188	2	
14	710408	NUT, 9/16-18 CTRLK 15X101	2	
15	7.10265.	SCREW, 3/8-16X1.00 WAHHSPTAPPL	10	
16	94288-853	COVER PULLEY	2	
44	710231	BELT, V	1	
45	710232	BELT, V- 40" DECK	1	
46	92683	GAUGE WHEEL, 4.94 DIA.	2	
47	94025	BOLT, SPSH 3/8-16X.63SH3.00LG	2	
48	710115	WASHER, FLAT.518X.87X1.617X1.02	2	
49	710140	NUT, 3/8-16HWD FLLK MACK 15X84	2	
66	710108	HAIR PIN (31X4)	2	



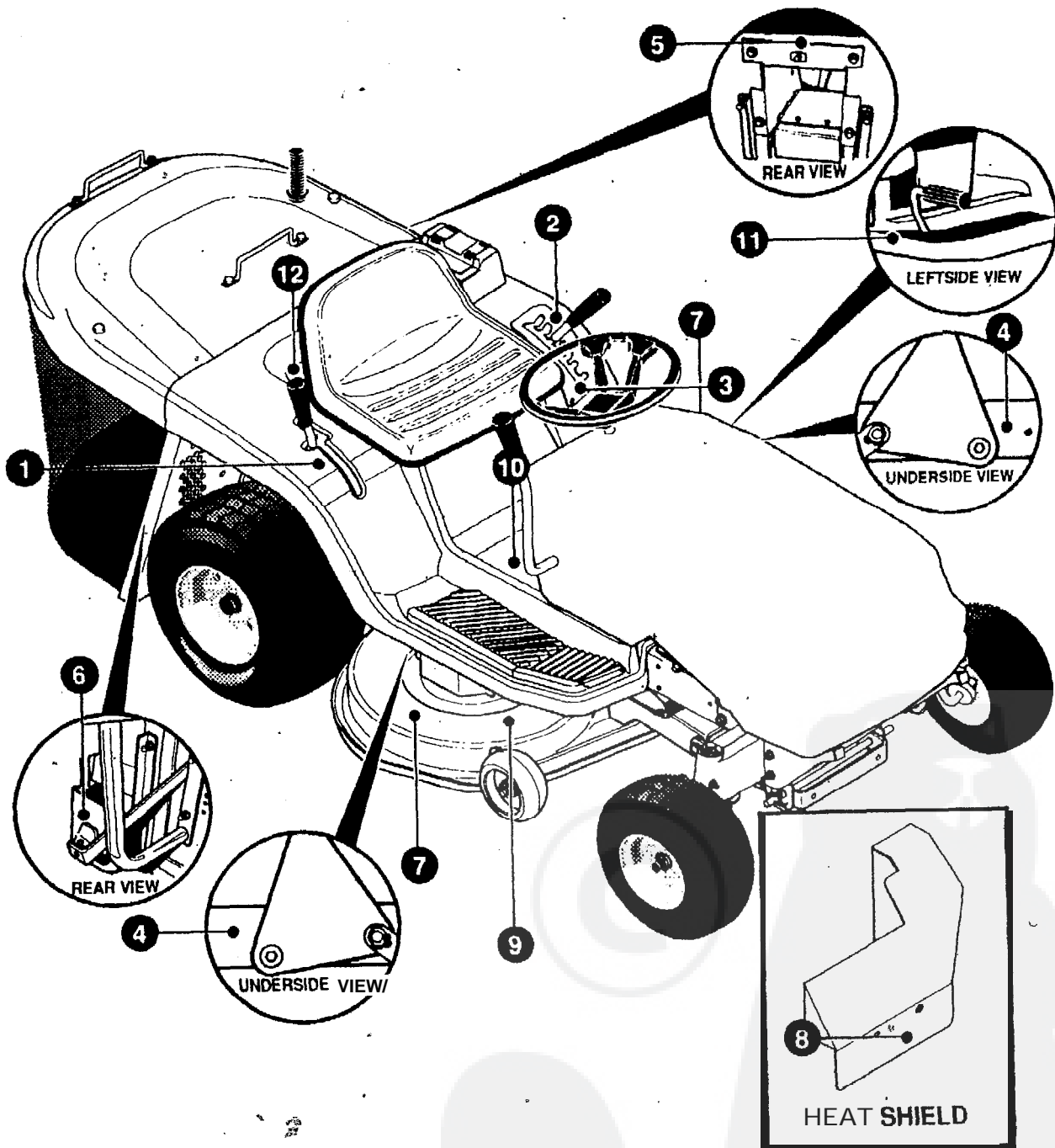
KEY NO.	PART NO.	DESCRIPTION	QTY
1	94751	HARNES 12.5B&S	1
2	94740	HARNES ADAPTER,OK/CHARGE IL	1
3	94742	HARNES , REAR-BATTERY	1
4	303064	ASSY,LIGHT WIRE-1/4 TURN	1
5	52572	BULB, HEADLAMP	2
6	57444	TIE, CABLE BLACK NYLON	5
7	41482	PRESS CLIP,1.380LG.255ID	2
8	94762	SWITCH, IGNITION D	1
9	327350	KEY,IGNITION	2
10	320082	SWITCH,DOUBLE POLE	1
11	57769	BULB, INDICATOR	2
12	94136	SWITCH LIMIT	2
13	94613	SOLENOID	1
14	710133	SCREW,HHWATAP 1/4X.50	2
15	710203	NUT, 1/4-20 HEXNYL 15X116	2
16	95420	WIRE, GROUND,20.0"	1
17	710133	SCREW,HHWATAP 1/4X.50	1
18	94159	SWITCH, SEAT	1
19	302257	BATTERY 12V	1
20	710226	BOLT, 1/4-20X 63CAD	2
21	710225	-NUT, WING 1/4-20	2

WIRING SCHEMATIC



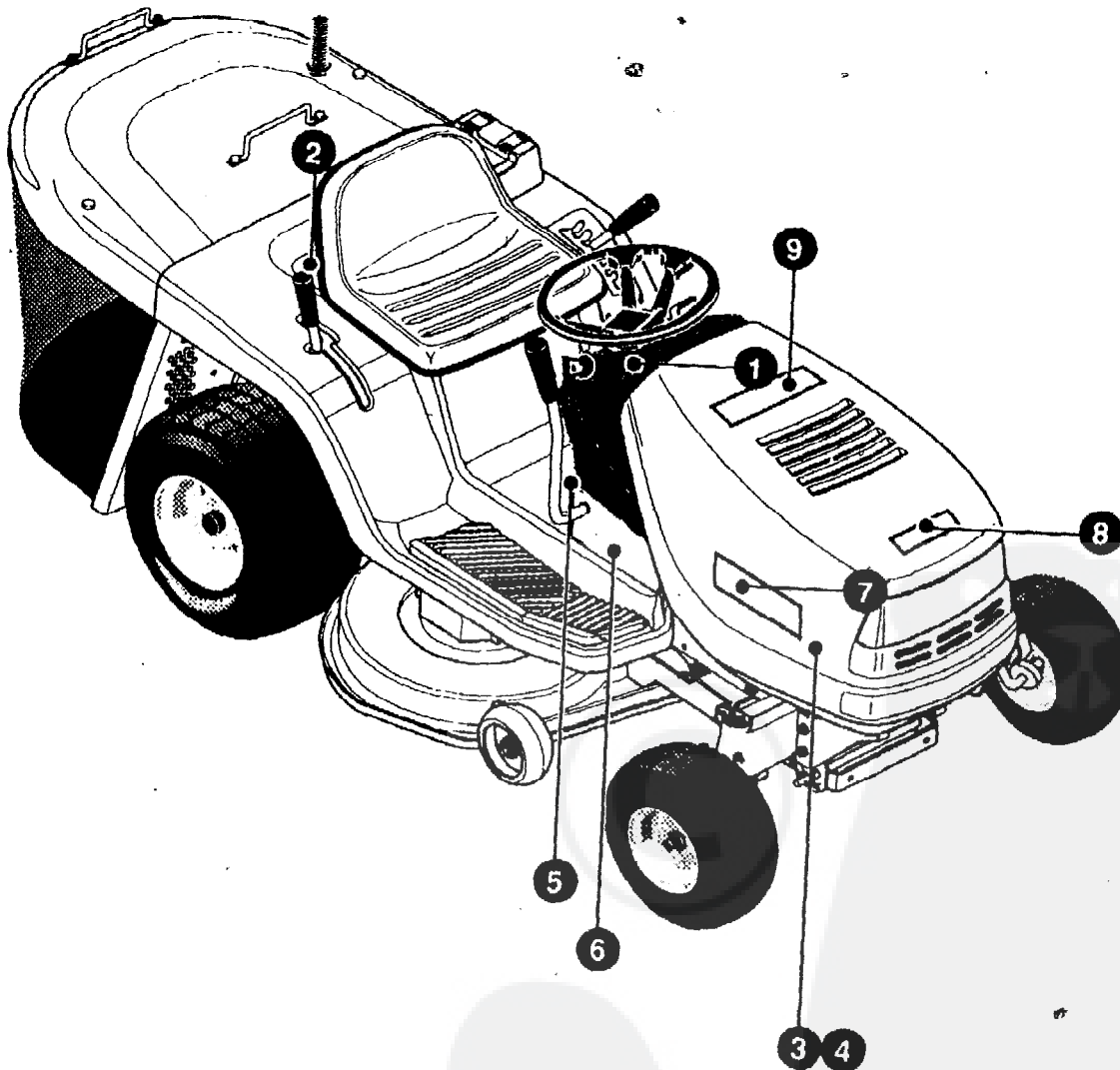


KEY NO.	PART NO.	DESCRIPTION	QTY
1	94560	ASSEMBLY GRASS COLLECTOR REBA	1
1-1.	94849	ASSY., UPPER FRAME	1
1-2	94850	BRACE, FRAME COLLECTOR	2
1-3	180020	SCREW 1/4-20X.75	6
1-4	1502	NUT, 1/4-20 REGHEXCTRLK	6
1-5	94851	ASSY., FRONT FRAME COLLECT	1
1-6	94852	BAG, REBA COLLECTOR	1
1-7	94853	HANDLE, DUMP REBA COLLECT.	1
1-8	94854	RUBBER GRIP 7/8" REBA	1
1-9	94855	HANDLE, REBA COLLECTOR	2
1-10	710266	SCREW, 1 O-24X.38 SLHWATAP	2
1-11	710266	SCREW, 10-24X.38 SLHWATAP	4
1-12	308459	NUT, #10-24 HXHDNYLK	4
2	94908-860	TOP COVER, COLLECTOR REBA	1
3	94244	BRACKET, SWITCH	1
4		RIVET, POP(NON SERVICEABLE PART)	



KEY NO.	PART NO.	DESCRIPTION	QTY
1	710558	DECAL, SHIFTER 6-SP REBA	1
2	710517	DECAL, HEIGHT ADJUST 6-POS.	1
3	710683	DECAL, DECK LEVEL REBA/NLT EXP	1
4	710523	DECAL, PINCH POINTS WARNING	1
5	338541	DECAL,BAGGER "CE" M#44X5939	1
6	338542	DECAL, DRAWBAR WARN M#44X6138	1
7	402700	DECAL, CAUTION DECK LH	2
8	338543	DECAL,HOT SURF WARN M#44X5936	1
9	710684	DECAL, DECK BELT ROUTE REBA	1
10	710534	DECAL,CONS CAUT. M#44X6815	1
11	402702	DECAL,BRAKE/CLUTCH PICTOGRAM	1
12	318010	DECAL,TUV GS MO 44X2929	

341271A



KEY NO.	PART NO.	DESCRIPTION	QTY
1	710615	DECAL, DASH CHOKE-A-MATIC	1
2		NOT A SERVICABLE PART	
3	711019	DECAL, TURFMASTER LH	1
4	711020	DECAL, TURFMASTER RH	1
5	710691	DECAL, PARK/BRAKE (P)	1
6	711021	DECAL, CONSOLE 12.5/40	2
7	305603	PAD, 18 X 6 FOAM HOOD	2
8	307276	PAD, 15 X 7 FOAM HOOD	1
9	307277	PAD, 12 X 4 FOAM HOOD	1