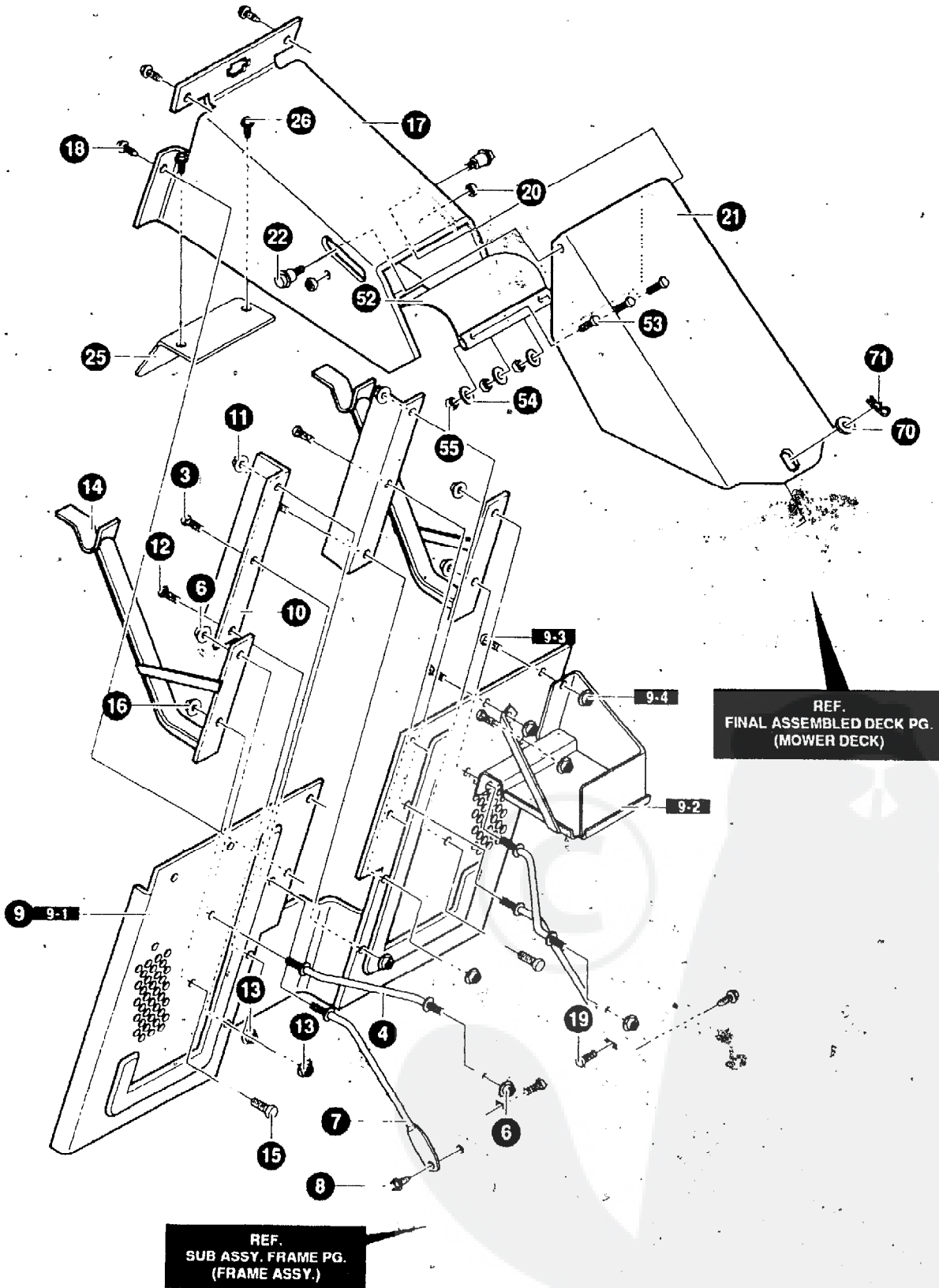


NOTE: ALWAYS USE ORIGINAL
original
equipment parts may void your warranty

ALL UNNUMBERED
ITEMS ARE INTERCHANGEABLE
WITH OPPOSITE SIDE

3413178

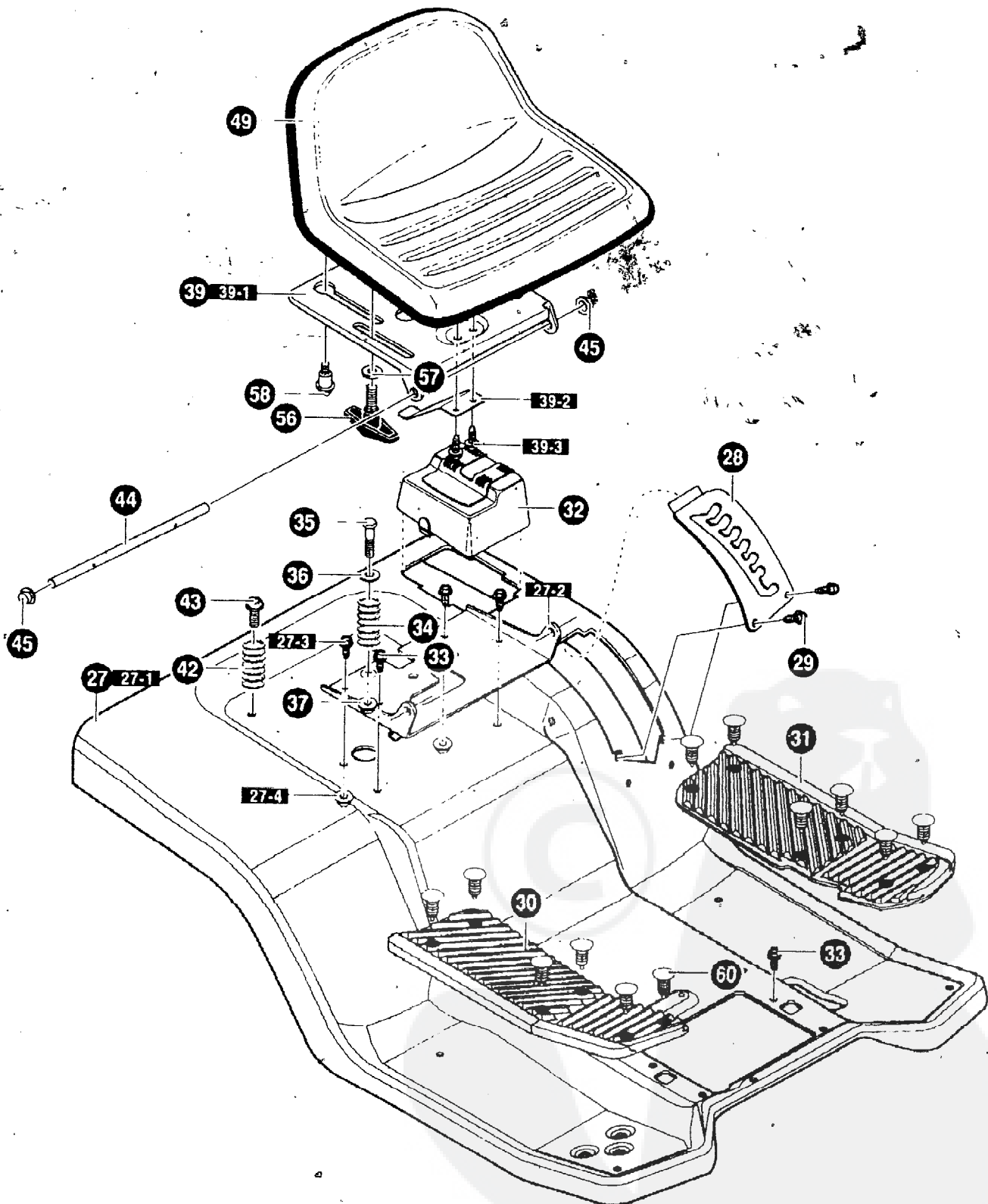
| KEY # | PART # | DESCRIPTION | QTY |
|-------|------------|--------------------------------|-----|
| 1 | 95432-853 | BRACKET/HOOD RH | 1 |
| 2 | 95433-853 | BRACKET/HOOD LH | 1 |
| 3 | 710079 | SCREW, 5/16-18X.75HHWATAPSGIBP | 4 |
| 4 | 95427 | DASH | 1 |
| 5 | 710282 | SCREW, 1/4-14X.75PHPANTAPABBL | 2 |
| 8 | 180020 | SCREW, 1/4-20X.75 HHC | 2 |
| 9 | 120392 | WASHER, FLAT 281X .63X.065 | 4 |
| 10 | 780029 | NUT, 1/4-20 HEX NYLOCK #71035 | 2 |
| 11 | 341569-836 | ASM. LOWER CONSOLE | 1 |
| 11-1 | 95425 | TOWER, LOWER DASH | 1 |
| 11-2 | 95426 | SUPPORT, STEERING/PTO NLT | 1 |
| 11-3 | 710264 | SCREW, 1/4-20X SO WAHHTAP | 4 |
| 11-4 | 95406 | ROD, DASH BRACE | 1 |
| 11-5 | 710264 | SCREW, 1/4-20X.50 WAHHTAP | 2 |
| 12 | 710079 | SCREW, 5/16-18X.75HHWATAPSGIBP | 4 |
| 15 | 94638-836 | PANEL, ACCESS | 1 |
| 16 | 710282 | SCREW, 1/4-14X.75PHPANTAPABBL | 2 |
| 17 | 94977 | HOOD | 1 |
| 18 | 302670 | LENS, HEADLAMP | 1 |
| 19 | 308492 | FOIL, LENS HOOD REFLECTOR | 1 |
| 20 | 322700 | DECAL, TAPE | 1 |
| 21 | 301452 | FOIL, HEAT REFLECTOR | 2 |
| 22 | 300317 | CLEVIS PIN .375DIAX.81LG | 2 |
| 23 | 8260 | HAIR PIN .091DIAX1.66LG | 2 |
| 24 | 6711 | PLASTIC WASHER .315X.75X.064 | 4 |
| 25 | 95404 | BUSHING, STEERING SHAFT | 1 |
| | 711117 | OPERATOR'S MANUAL | |



NOTE ALWAYS USE ORIGINAL EQUIPMENT PARTS
 Use of service/replacement parts other than original
 equipment parts may void your warranty

ALL UNNUMBERED
 ITEMS ARE INTERCHANGEABLE
 WITH OPPOSITE SIDE.

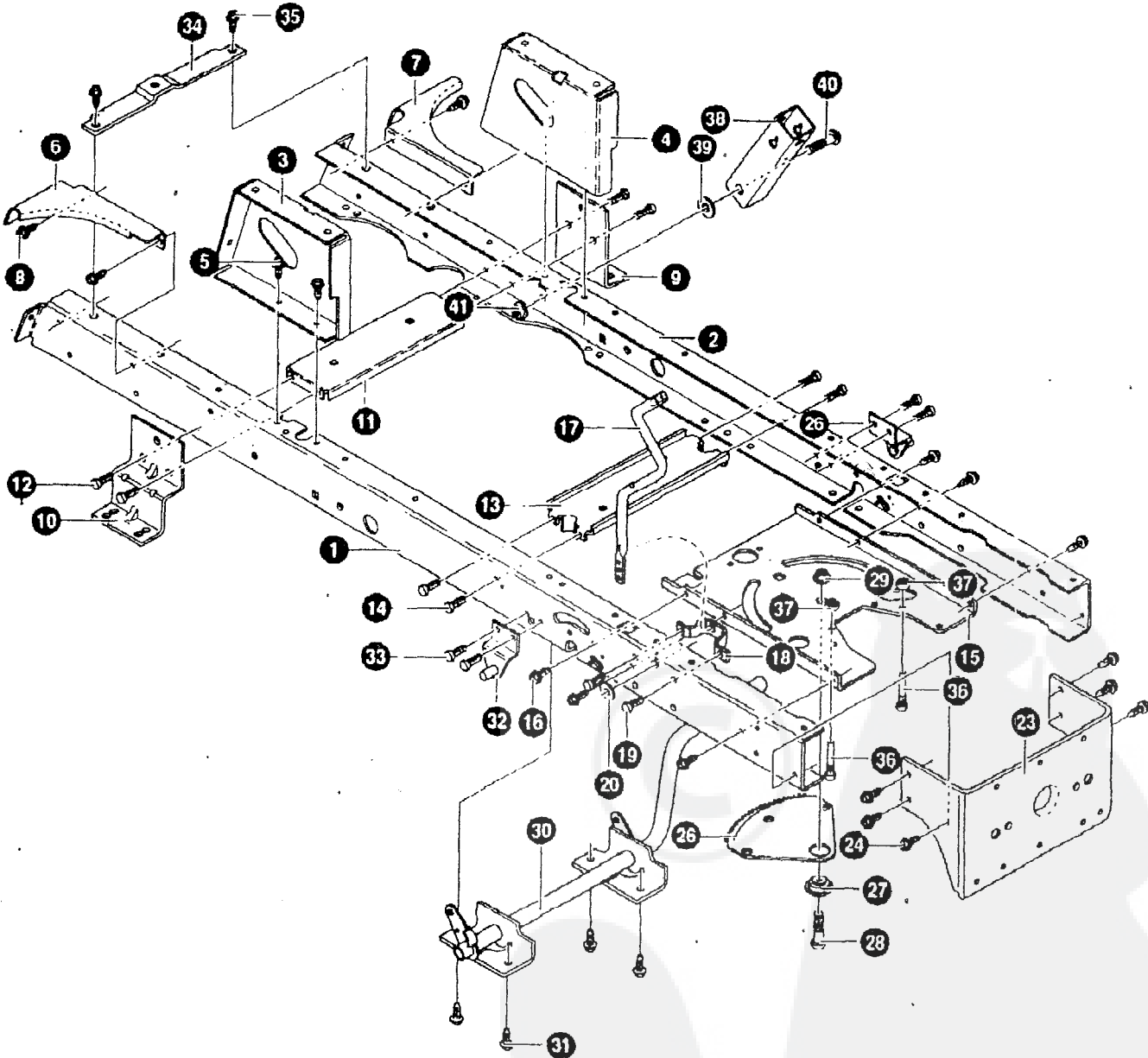
| KEY NO. | PART NO | DESCRIPTION | QTY |
|---------|-------------|-----------------------------|-----|
| 3 | 710079 | SCREW, 5/16-18X.75HHWATAP | 2 |
| 4 | 94625 | ROD, BRACE | 2 |
| 6 | 45171 | NUT, 3/8-16 HWDFL WHIZ-LOCK | 4 |
| 7 | 94231 | ROD, BRACE | 2 |
| 8 | 710079 | SCREW, 5/16-18X.75HHWATAP | 2 |
| 9 | 341493-853 | BACK PLATE/BATTERY ASSEMBLY | 1 |
| 9-1 | 94569 | BACK PLATE ASSEMBLY REBA | 1 |
| 9-2 | 94563 | BATTERY TRAY WELD ASM. | 1 |
| 9-3 | 1 8 0 0 7 3 | SCREW, 5/16-18X.50 HHC | 3 |
| 9-4 | 45174 | NUT, 5/16-18 HEXWDFLLK WHIZ | 3 |
| 10 | 94232-853 | BRACE, BACK PLATE | 2 |
| 11 | 45905 | NUT, 3/8-16 HWDFLLK MACK | 2 |
| 12 | 328154 | SCREW, 5/16-18X1.0WDFLLK | 4 |
| 13 | 710205 | NUT, 5/16-18 WDFLLK (15X88) | 4 |
| 14 | 94637-853 | ASSY, COLLECTOR SUPPORT | 2 |
| 15 | 328154 | SCREW, 5/16-18X1.0WDFLLK | 2 |
| 16 | 45174 | NUT, 5/16-18HEXWDFLLK WHIZ | 2 |
| 17 | 94295-853 | CHUTE WELD ASM. UPPER | 1 |
| 18 | 710079 | SCREW, 5/16-18X.75HHWATAP | 4 |
| 19 | 57101 | BOLT, 5/16-18X 75 CARR | 2 |
| 20 | 45174 | NUT, 5/16-18 HEXWDFLLK WHIZ | 2 |
| 21 | 94970-853 | CHUTE WELD ASM. MIDDLE | 1 |
| 22 | 51601 | BOLT, .500X.453 HSH 3/8-16 | 2 |
| 25 | 94263-853 | COVER, T-AXLE SHIELD | 1 |
| 26 | 710264 | SCREW, 1/4-20X.50 WAHHTAP | 2 |
| 52 | 94264 | FLAP,CHUTE REBA | 1 |
| 53 | 180020 | SCREW, 1/4-20X.75 HHC | 3 |
| 54 | 120392 | WASHER, FLAT .281X.63X.065 | 3 |
| 55 | 46931 | NUT, 1/4-20 WDFL MAC-LOCK | 3 |



NOTE ALWAYS USE ORIGINAL EQUIPMENT PARTS
Use of service/replacement parts other than original
equipment parts may void your warranty

ALL UNNUMBERED
ITEMS ARE INTERCHANGEABLE
WITH OPPOSITE SIDE

| KEY NO. | PART NO. | DESCRIPTION | QTY |
|---------|------------|----------------------------------|-----|
| 27 | 341496-836 | ASM.SEAT DECK PEDAL GEAR REBA | 1 |
| 27-1 | 94204 | 4 SEAT DECK,GEAR DRIVE | 1 |
| 27-2 | 94153 | BRACKET, PIVOT SEAT | 1 |
| 27-3 | 710279 | SCREW, 5/16-18X.625 | 2 |
| 27-4 | 710205 | NUT, 5/16-18 WDFLLK(15X88) | 2" |
| 29 | 94243-853 | PLATE, LIFT DETENT | 1 |
| 30 | 710196 | SCREW, 10-24X.500TRSEGI | 2 |
| | 95409 | FOOTREST PAD RH | 1 |
| 31 | 95408 | FOOTREST PAD LH | 1 |
| 32 | 94200 | COVER, BATTERY | 1 |
| 33 | 710079 | SCREW, 5/16-18X.75HHWATAP | 3 |
| 34 | 710136 | SPRING, COMPRESS 4.57LG X 1.17 | 1 |
| 35 | 710093 | BOLT,SHOULDER 1/4-20NC-2A(9X55) | 1 |
| 36 | 94155 | WASHER CUP ZINC | 1 |
| 37 | 710280 | NUT, 1/4-20 WDFLLK (15X89) | 1 |
| 39 | 341494-836 | SUB ASM. SEAT SUPPORT REBA | 1 |
| 39-1 | 94154 | SUPPORT, SEAT | 1 |
| 39-2 | 94057 | SPRING - LEAF | 1 |
| 39-3 | 710264 | SCREW, 1/4-20X.50 WAHHTAP | 2 |
| 42 | 710109 | SPRING,COMPRESS 2.43LG (164X30) | 2 |
| 43 | 710079 | SCREW, 5/16-18X.75HHWATAP | 2 |
| 44 | 94156 | ZINCHINGE SEAT PIVOT | 1 |
| 45 | 710192 | NUT, PUSH CAP ,375 (28X23) | 2 |
| 49 | 95415 | SEAT, QK. ADJUST | 1 |
| 56 | 94160, | BOLT, WING 5/16-18 | 2 |
| 57 | 710281 | WASHER, FLAT .344X.62X.06 | 2 |
| 58 | 710101 | BOLT, SHOULDER 5/16-18NC (9X56) | 2 |
| 60 | 309235 | FASTENER,RATCHET | 6 |

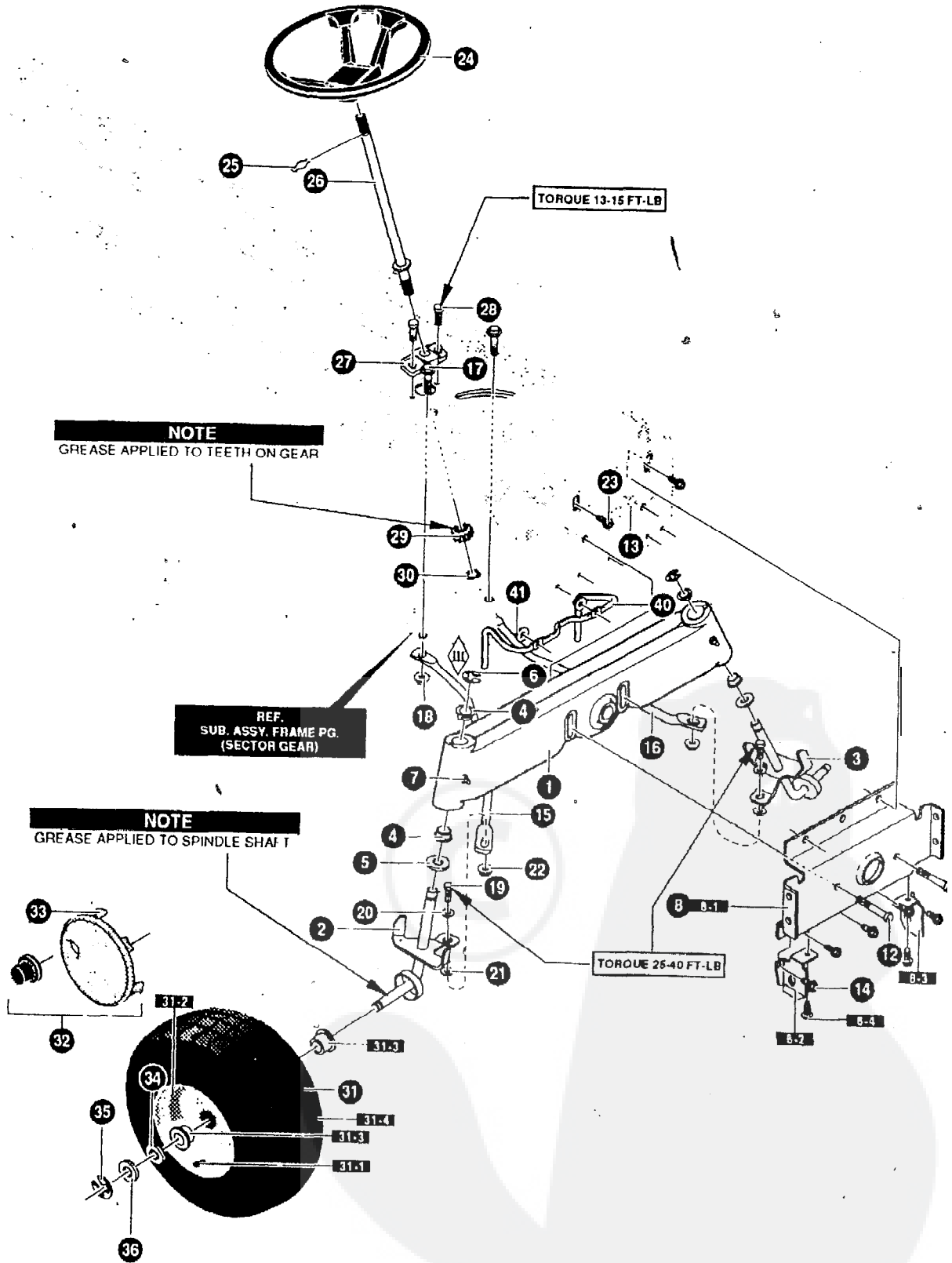


NOTE: ALWAYS USE ORIGINAL EQUIPMENT PARTS
Use of service/replacement parts other than original
equipment parts may void your warranty.

ALL UNNUMBERED
ITEMS ARE INTERCHANGEABLE
WITH OPPOSITE SIDE

340370A

| KEY PART NO. | PART NO. | DESCRIPTION | QTY |
|--------------|----------|-------------------------------|-----|
| 1 | 94564 | FRAME,RAIL RH REBA | |
| 2 | 94565 | FRAME,RAIL LH REBA | |
| 3 | 94634 | SUPPORT,SEAT RH | 1 |
| 4 | 94633 | SUPPORT,SEAT LH | 1 |
| 5 | 710079 | SCREW, 5/16-18X.75HHWATAP | 4 |
| 6 | 94561 | BRACE, BACKPLATE RH | 1 |
| 7 | 94562 | BRACE, BACKPLATE LH | 1 |
| a | 710079 | SCREW, 5/16-18X.75HHWATAP | 4 |
| 9 | 94008 | BRACKET,TRANSAXLE | 1 |
| 10 | 94234 | BRACKET,T/A RH-VST, LH-VST | 1 |
| 11 | 94236 | ASSY, IDLER MOUNT, REAR | 1 |
| 12 | 710079 | SCREW, 5/16-18X.75HHWATAP | 4 |
| 13 | 94237 | ASM. IDLER MOUNT,FRONT | 1 |
| 14 | 710079 | SCREW, 5/16-18X.75HHWATAP | 4 |
| 15 | 94003 | PLATE,STEERING MOUNTING | |
| 16 | 710079 | SCREW, 5/16-18X.75HHWATAP | 6 |
| 17 | 94019 | CRANK, PTO (DRILLED) | 1 |
| 18 | 94005 | BRACKET, BELL CRANK | 1 |
| 19 | 710079 | SCREW, 5/16-18X.75HHWATAP | 2 |
| 20 | 120395 | WASHER, FLAT .469X .92X.065 | |
| 23 | 94013 | BRACKET, HANGER REAR | |
| 24 | 710079 | SCREW, 5/16-18X.75HHWATAP | 6 |
| 26 | 94121 | GEAR, SECTOR | 1 |
| 27 | 94123 | BEARING, SECTOR GEAR | 1 |
| 28 | 710312 | SCREW, 5/16-18X1.00 | |
| 29 | 710105 | NUT, 5/16-18 HWDFLLK (15X113) | 1 |
| 30 | 9424 1 | ASM.CLUTCH/BRAKE PEDAL | |
| 31 | 710079 | SCREW, 5/16-18X.75HHWATAP | 4 |
| 32 | 94285 | BRACKET SUPENSION ASM. | 2 |
| 33 | 710079 | SCREW, 5/16-18X.75HHWATAP | 4 |
| 34 | 94566 | BRACE, RAIL | 1 |
| 35 | 710079 | SCREW, 5/16-18X.75HHWATAP | 2 |
| 36 | 93349 | SCREW GUIDE 5/16-18 | 2 |
| 37 | 710204 | NUT,5/16-18 HEXWDFLLK WHIZ PL | 2 |
| 38 | 94015 | BRACKET, PIVOT | 1 |
| 39 | 845 | WASHER, FLAT .390X1.25X.119 | 1 |
| 40 | 710000 | BOLT, 562X1.563 HSH 3/8-16 | 1 |
| 41 | 710140 | NUT,3/8-16HWDFLLK MACK 15X84 | 1 |

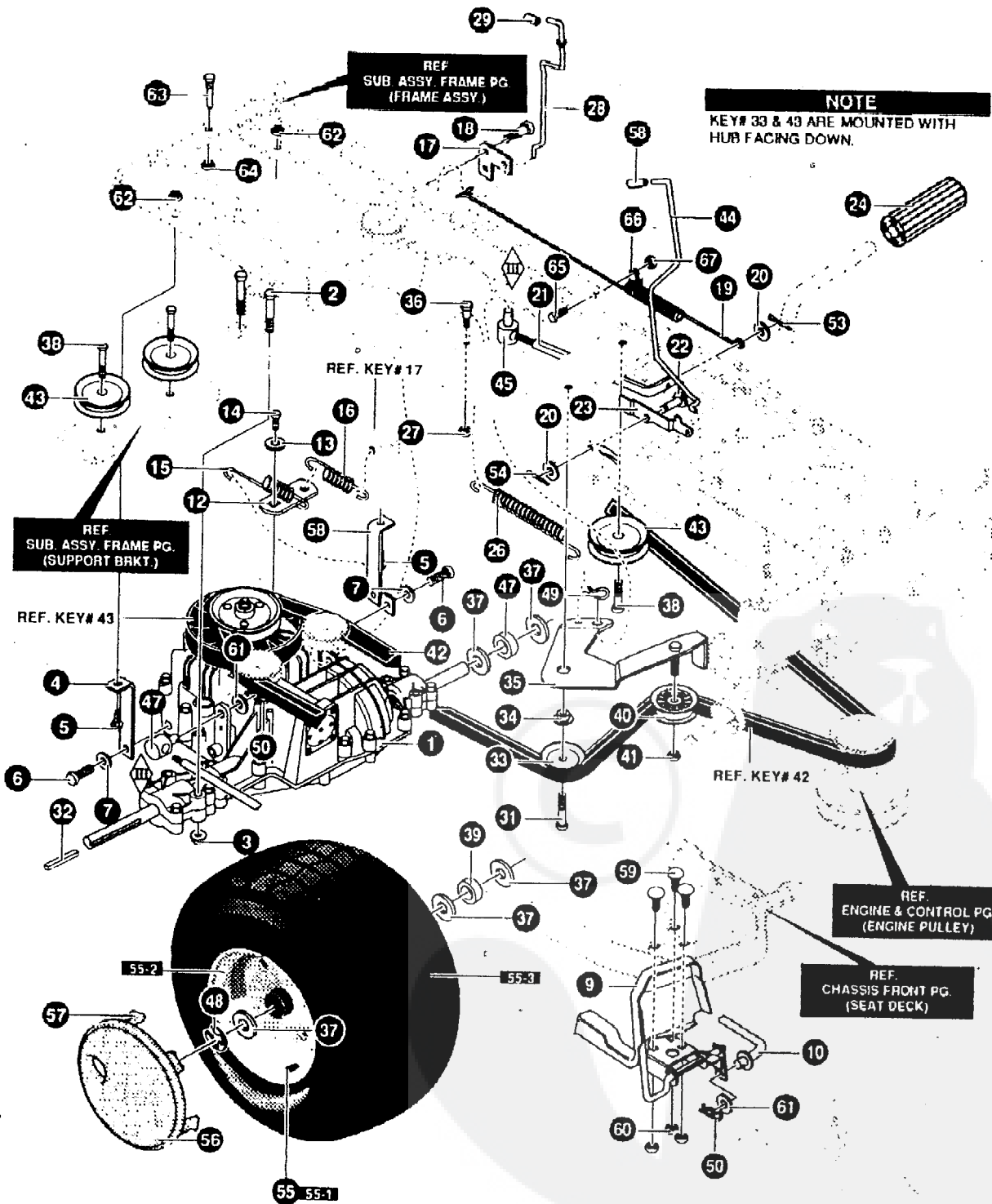


NOTE: ALWAYS USE ORIGINAL EQUIPMENT PARTS. Use of service/replacement parts other than original equipment parts may void your warranty.

ALL UNNUMBERED ITEMS ARE INTERCHANGEABLE* WITH OPPOSITE SIDE

340597A

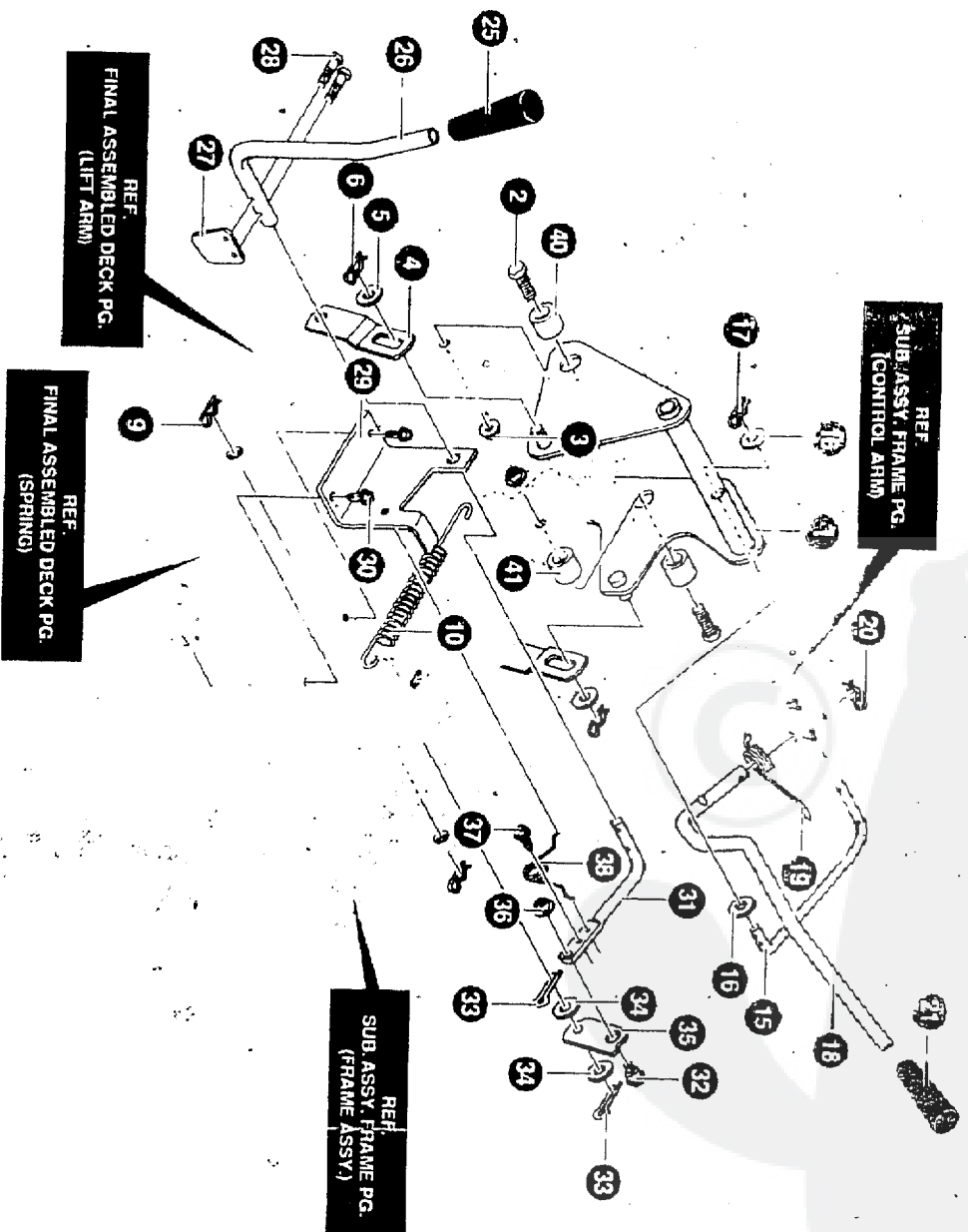
| KEY NO. | PART NO. | DESCRIPTION | QTY |
|---------|------------|-----------------------------------|-----|
| 1 | 95405-853 | AXLE, CAST MACHINED | 1 |
| 2 | 94178-853 | SPINDLE, RH MO#94178 | 1 |
| 3 | 94 179-853 | SPINDLE LH, WELD ASSEMBLY | 1 |
| 4 | 92527 | BEARING, SPINDLE | 4 |
| 5 | 710129 | WASHER, .766 ID X 1.62ID 16GA | 2 |
| 6 | 710103 | E-RING .574ID X .050/.75 SH 11 X3 | 2 |
| 7 | 706 | ZERK, GREASE FITTING | 2 |
| 8 | 341491-853 | ASM, FRONT AXLE/DECK HANGER | 1 |
| 8-1 | 94007 | HANGER, AXLE | 1 |
| 8-2 | 94290 | HANGER, DECK RH | 1 |
| 8-3 | 94289 | HANGER, DECK LH | 1 |
| 8-4 | 710079 | SCREW, 5/16-18X.75HHWATAPSGIBP | 2 |
| 12 | 180113 | SCREW, 5/16-18X3.00 | 2 |
| 13 | 710205 | NUT, 5/16-18 WDFLLK (15X88)Z | 2 |
| 14 | 710079 | SCREW, 5/16-18X.75HHWATAPSGIBP | 2 |
| 15 | 94020-853 | DRAG LINK RH | 1 |
| 16 | 94021-853 | DRAGLINK, LH | 1 |
| 17 | 710440 | BOLT, HSSH (9X57) | 2 |
| 18 | 710740 | NUT, 3/8-16HWDFLLK MACK 15X84 | 2 |
| 19 | 710082 | SCREW, 3/8-16X1.5 | 2 |
| 20 | 710083 | WASHER, FLAT .391X1.00X.083 | 2 |
| 21 | 710142 | WASHER, FLAT.406X.81X16GA | 2 |
| 22 | 710140 | NUT, 3/8-16HWDFLLK MACK 15X84 Z | 2 |
| 23 | 710079 | SCREW, 5/16-18X.75HHWATAPSGIBP | 3 |
| 24 | 95441 | STEERING WHEEL | 1 |
| 26 | 94127 | SHAFT, STEERING | 1 |
| 27 | 94124 | BEARING-LOWER | 1 |
| 28 | 710079 | SCREW, 5/16-18X.75HHWATAPSGIBP | 2 |
| 29 | 94122 | GEAR PINION | 1 |
| 30 | 710102 | RING, RET E.54ID.59SH (11X25) | 1 |
| 31 | 692287 | TIRE & RIM 15X6-6 | 2 |
| 31-1 | 338512 | VALVE STEM | 2 |
| 31-2 | 338517 | RIM, CARLISLE | 2 |
| 31-3 | 338513 | BEARING | 2 |
| 31-4 | 3385 16 | TIRE, 15X6X6 | 2 |
| 34 | 710131 | WASHER, FLAT.759ID (340435) | 2 |
| 35 | 36625 | RETAINING RING | 2 |
| 36 | 710350 | WASHER, FLAT .765X1.62X.065Z | 2 |
| 40 | 94310 | GUIDE-STACK PULLEY BELT | 1 |
| 41 | 45174 | NUT, 5/16-18 HEXWDFLLK WHIZ | 2 |



NOTE: ALWAYS USE ORIGINAL EQUIPMENT PARTS.
 Use of service/replacement parts other than original
 equipment parts may void your warranty

ALL UNNUMBERED
 ITEMS ARE INTERCHANGEABLE
 WITH OPPOSITE SIDE

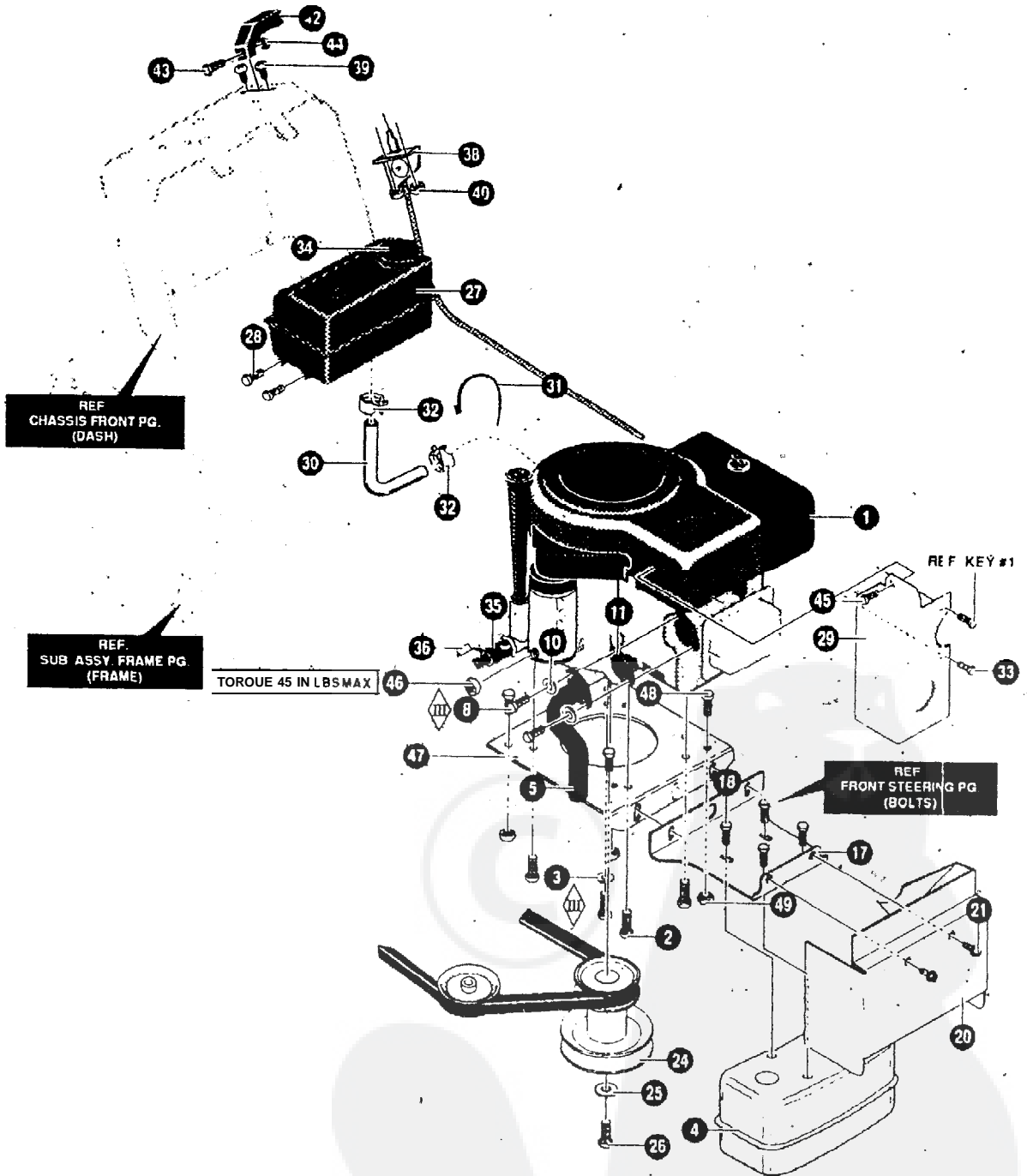
| KEY NO. | PART NO. | DESCRIPTION | QTY |
|---------|-----------|---------------------------------|-----|
| | | TRANSAXLE HYDRO VST205-025BM | 1 |
| 2 | 180091 | SCREW, 5/16-18X2 50 HHC | 4 |
| 3 | 710205 | NUT, 5/16-18 WDFLLK (15X88) | 4 |
| 4 | 94224-853 | BRACKET, STABILIZER | 1 |
| 5 | 710079 | SCREW, 5/16-18X.75HHWATAP | 1 |
| 6 | 35498 | SCREW, 5/16-18X.75WAHHTAP | 1 |
| 7 | 120638 | WASHER, HVSPTLK .328X.60X.09 | 1 |
| 9 | 94422-853 | PEDAL ASSEMBLY | 1 |
| 10 | 94304 | FOOT CONTROL ROD | 1 |
| 12 | 323212 | SHIFT BRACKET | 1 |
| 13 | 56255 | SCREW, 1/4-28X.75NYLHH | 1 |
| 14 | 57157 | WASHER .750X.250 SP-TRANSAXLE | 1 |
| 15 | 94622 | SPRING, TRANSAXLE DISCONNECT | 1 |
| 16 | 326780 | SPRING, TENSION 3/8ODX2.18X.055 | 1 |
| 17 | 94621-853 | BRACKET, DISCONNECT LEVER | 1 |
| 18 | 334126 | BOLT, .437X 136 5/16-18 | 1 |
| 19 | 95424 | SPRING, BRAKE 35.00 | 1 |
| 20 | 120394 | WASHER, FLAT .406X.81 X.065 | 1 |
| 21 | 94573 | ROD, CLUTCH | 1 |
| 22 | 49332 | PIN, CLEVIS .375DX.81LG | 1 |
| 23 | 94045 | LATCH, PARK BRAKE | 1 |
| 24 | 21544 | PEDAL, BRAKE/CLUTCH STD NLT | 1 |
| 26 | 710139 | SPRING, TENS .09X. X5. | 1 |
| 27 | 780029 | NUT, 1/4-20 HEX NYLOGK #71035 | 1 |
| 28 | 9 4 6 5 3 | ROD, DISCONNECT CONTROL | 1 |
| 29 | 335980 | CAP, DUMP VALVE ROD .25IDX.75 | 1 |
| 31 | 710082 | SCREW, 3/8-16X1.5 HHCFLTHR5 | 1 |
| 32 | 52928 | KEY, SQUARE .187SQX2.25LG | 2 |
| 33 | 35374 | PULLEY, IDLER V4L 3.06X .62 | 1 |
| 34 | 95423 | SPACER, SHOULDER | 1 |
| 35 | 94238 | ASSY, IDLER ARM TRACTION | 1 |
| 36 | 310088 | BOLT, 250X.312 HSSH 1/4-20 | 1 |
| 37 | 642 | WASHER, FLAT .755X1.31X.075 | 6 |
| 38 | 180124 | SCREW, 3/8-16X1.25 | 3 |
| 39 | 95421 | SPACER, .87 X 1.78 | 2 |
| 40 | 91179 | PULLEY | 1 |
| 41 | 45905 | NUT, 3/8-16 HWDFLLK MACK | 1 |
| 42 | 94609 | BELT, V 4L 112.75 | 1 |
| 43 | 35374 | PULLEY, IDLER V4L 3.06X .62 | 3 |
| 44 | 94568 | PARK BRAKE CONTROL ROD | 1 |
| 45 | 710059 | NUT, 5/16-18X3/8 ADJUSTING | 1 |
| 47 | 92132 | ADJUSTING NUT 1/2-13 | 1 |
| 48 | 36625 | RING, RETEX .57X.05TRU5133-75 | 2 |
| 49 | 56180 | PIN, HAIR .53DIAX1.62LG | 1 |
| 50 | 8260 | PIN, HAIR .091DIAX1.66LG | 1 |
| 53 | 121222 | PIN, COTTER .090DIAX.75LG | 1 |
| 54 | 121222 | PIN, COTTER .090DIAX.75LG | 1 |
| 55 | 692290 | TIRE & RIM 20X8-8 | 2 |
| 55-1 | 3385 12 | VALVE STEM | 2 |
| 55-2 | 338524 | RIM | 2 |
| 55-3 | 338526 | TIRE 20X8-8 | 2 |
| 56 | | NOT USED ON THIS UNIT | |
| 57 | | NOT USED ON THIS UNIT | |
| 58 | 94225-853 | ASM. WELD, BKT STABILIZER LH | 1 |
| 59 | 57101 | BOLT, 5/16-18X.75 CARR. | 3 |
| 60 | 710205 | NUT, 5/16-18 WDFLLK (15X88) | 3 |
| 61 | 996425 | FLATWASHER .515X.88X.064 | 2 |
| 62 | 45174 | NUT, 5/16-18 HEXWDFLLK WHIZ | 2 |
| 63 | 93349 | SCREW GUIDE 5/16-18 | 1 |
| 64 | 710204 | NUT, 5/16 18 HEXWDFLLK WHIZ | 1 |
| 65 | 180016 | SCREW, 1/4-20 X.50 | 1 |
| 66 | 57569 | RETAINER 31 IDX.62X.03 WIRE | 1 |
| 67 | 51335 | NUT, 1/4-20 WDFLWHIZ-LK | 1 |



NOTE. ALWAYS USE ORIGINAL EQUIPMENT PARTS
 Use of service/replacement parts other than original
 equipment parts may void your warranty.

ALL UNNUMBERED
 ITEMS ARE INTERCHANGEABLE
 WITH OPPOSITE SIDE

| KEY NO. | PART NO. | DESCRIPTION | QTY |
|---------|------------|----------------------------------|-----|
| 1 | 94299-853 | LIFT ARM WELD ASSEMBLY | |
| 2 | 710222 | SCREW, 1/2-13X1.50 (1X127) | 2 |
| 3 | 710223 | NUT, 1/2-13 LOCK (15X41) | 2 |
| 4 | 94262-853 | BRACKET, LIFT LINK | 2 |
| 5 | 710119 | FLATWASHER (17X91) | 2 |
| 6 | 710108 | PIN, HAIR (31X4) | 2 |
| 9 | 710108 | PIN, HAIR (31X4) | 2 |
| 10 | 710235 | SPRING, EXTENSION 9 82X1.01OD | 1 |
| 15 | 94276 | LINK, LIFT HANDLE | 1 |
| 16 | 710119 | FLATWASHER (17X91) | 2 |
| 17 | 8260 | PIN, HAIR .091DIA X 1.66LG | 1 |
| 18 | 94029 | HANDLE, LIFT | 1 |
| 19 | 710111 | TORSION SPRING .657LG (166X40) | 1 |
| 20 | 710108 | PIN, HAIR (31X4) | 1 |
| 21 | 92697 | GRIP, BLACK | 1 |
| 25 | 92698 | GRIP, BLACK | 1 |
| 26 | 94826 | PTO LEVER | 1 |
| 27 | 94022 | PADDLE, SWITCH | 1 |
| 28 | 710137 | SCREW, THD FORMING | 2 |
| 29 | 9401 a-a53 | BRACKET, PTO | |
| 30 | 710079 | SCREW, 5/16-18X.75HHWATAP | 2 |
| 31 | 94017 | LEVER, PTO | 1 |
| 32 | 710098 | BOLT, 50X.75 HSSH 3/8-16Z 9X39 | |
| 33 | 710107 | PIN, COTTER .094DIA X .75 30X20 | 2 |
| 34 | 710115 | FLATWASHER .518X 87X1617X102 | 2 |
| 35 | 94004 | LINK PTO ZINC | 1 |
| 36 | 710140 | NUT, 3/8-16HWD FLLK MACK (15X84) | 1 |
| 37 | 710079 | SCREW, 5/16-18X 75HHWATAP | 1 |
| 38 | 710141 | TORSION SPRING .33LG (166X39) | 1 |
| 40 | 94309 | SPACER .513 ID X .880 OD | 2 |
| 41 | 56150 | SPACER, SLEV 94X1.13X.531 | 1 |

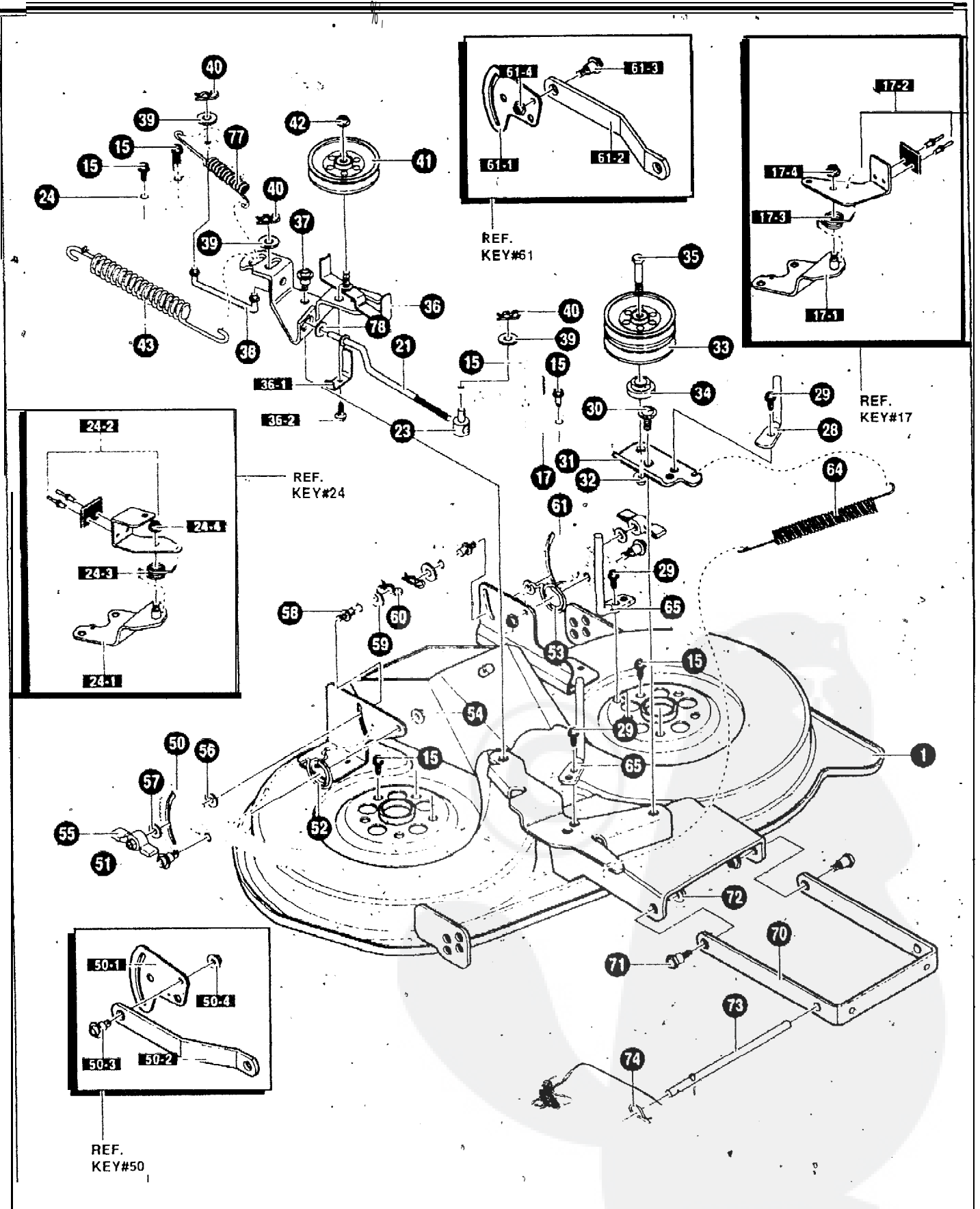


NOTE: ALWAYS USE ORIGINAL EQUIPMENT PARTS. Use of service/replacement parts other than original equipment parts may void your warranty.

ALL UNNUMBERED ITEMS ARE INTERCHANGEABLE WITH OPPOSITE SIDE

341636A

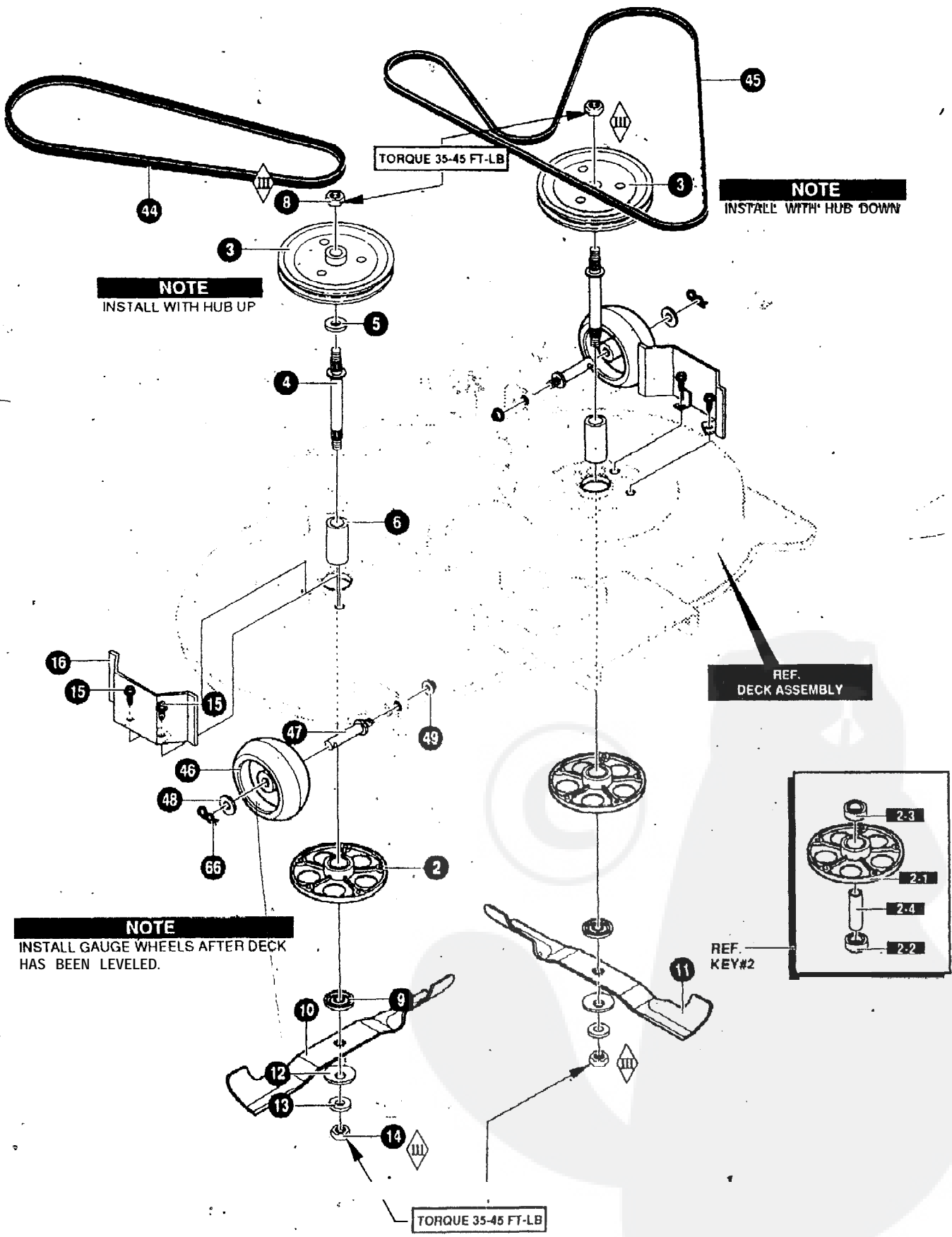
| KEY PART NO. | NO. | DESCRIPTION | QTY |
|--------------|------------------|---|----------|
| 1 | (28N707-0177-01) | ENGINE 15.5 HP BSOHV(SEE ENGINE MANUAL) | 1 |
| 2 | 50947 | SCREW, 3/8-16X1.25 WAHHTAP | 4 a, |
| 3 | 138489 | WASHER, EXLK .384X.69X.04 | 1 |
| 4 | 94654 | MUFFLER, SINGLE-CYLINDER | 1 |
| 5 | 94657 | EXHAUST TUBE | 1 |
| 8 | 180077 | SCREW, 5/16-18X.75 | 2 |
| 10 | 120638 | WASHER, HVSPTLK.328X.60X.09 | 2 |
| 11 | 46708 | GASKET, MUFFLER | 1 |
| 17 | 94306-853 | BRACKET, MUFFLER MOUNT | 1 |
| 18 | 44811 | SCREW 1/4-20X.75 WAHHTAP | 4 |
| 20 | 95439-853 | SHIELD, HEAT LOWER FRONT | 1 |
| 21 | 710079 | SCREW 5/16-18X.75HHWATAP | 2 |
| 24 | 940308 | PULLEY, ENGINE | 1 |
| 25 | 120383 | WASHER, REGSPTLK | 1 |
| 26 | 433146 | SCREW 7/16-20X4.25 | 1 |
| 27 | 309853 | FUEL TANK 1.5 GALWO/SENSOR | 1 |
| 28 | 300303 | SCREW, .25X.75X51HHWAPLASTITE | 4 |
| 29 | 333772-853 | HEAT SHIELD | 1 |
| 30 | 57876 | TUBING, .25X 50 GAS LINE | 12.00 IN |
| 31 | 57444 | CABLE TIE | 1 |
| 32 | 47345 | CLAMP. FUEL LINE YELLOW | 2 |
| 33 | 710264 | SCREW, 1/4-20X.50 WAHHTAP | 1 |
| 34 | 12501 | FUEL CAP | 1 |
| 35 | 325547 | OIL DRAIN VALVE ASSEMBLY | 1 |
| 36 | 327422 | CAP,OIL DRAIN VALVE ASM.YELLOW | 1 |
| 38 | 93165 | THROTTLE CONTROL | 1 |
| 39 | 155941 | SCREW, 10-24X.63 PHFLTMA | 2 |
| 40 | 308459 | NUT #10-24 HXHDNYLK | 2 |
| 42 | 300508 | THROTTLE CONTROL KNOB | 1 |
| 43 | 159585 | SCREW, #8-32X.38 PHPNMA | 1 |
| 44 | 120622 | NUT, #8-32 REGHX | 1 |
| 45 | 57366 | SCREW 10-16X.50 DRIELTITE | 1 |
| 46 | 124818 | NUT, 1/4-20 REGHXJAM | 1 |
| 47 | 94006-853 | PLATE, ENGINE | 1 |
| 48 | 710079 | SCREW, 5/16-18X.75 HHWATAP | 4 |
| 49 | 710205 | NUT, 5/16-18 WDFLK (15X88) | 4 |
| 50 | 94951 | SPEEDREDUCER | 1 |



NOTE: ALWAYS USE ORIGINAL EQUIPMENT PARTS. Use of service/replacement parts other than original equipment parts may void your warranty.

ALL UNNUMBERED ITEMS ARE INTERCHANGEABLE WITH OPPOSITE SIDE

| KEY NO. | PART No. | DESCRIPTION | QTY | |
|---------|------------|-----------------------------------|-----------------------|---|
| 1 | 94303-853 | WELD ASSEMBLY DECK | 1 | |
| 15 | 710265 | SCREW, 3/8-16X1.00 WAHHSPTAPPL | 10 | |
| 17 | 94665-853 | BRAKE ARM ASSEMBLY LH | 1 | |
| 17-1 | 94293 | BRAKE SUPPORT ASSEMBLY LH | 1 | |
| 1 7 - 2 | 94291 | BRAKE ARM ASSEMBLY LH | 1 | |
| 17-3 | 710110 | SPRING, TORSION (166X27) | 1 | |
| 17-4 | 710205 | NUT, 5/16-18 WDFLLK (15X88) | 1 | |
| 21 | 942 77 | LINK, BRAKE LH | 1 | |
| 2 3 | 2 1 9 2 0 | NUT, ADJ. 3/8-16TAP | 1 | |
| 2 | 4 | 94664-853 | BRAKE ARM ASSEMBLY RH | 1 |
| 24-1 | 94294 | BRAKE SUPPORT ASSEMBLY RH | 1 | |
| 24-2 | 94292 | BRAKE ARM ASSEMBLY RH | 1 | |
| 24-3 | 710077 | SPRING, TORSION | 1 | |
| 24-4 | 710205 | NUT, 5/16-18 WDFLLK (15X88) | 1 | |
| 28 | 94274 | GUIDE, BELT REBA | 1 | |
| 29 | 710114 | SCREW, 5/16-18 .50HHTAP | 3 | |
| 30 | 710098 | BOLT, 50X.75 HSH 3/8-16Z 9X39 | | |
| 31 | 94261-853 | ARM., DOUBLE IDLER | 1 | |
| 32 | 710140 | NUT, 3/8-1 GHWDFLLK MACK 15X84 | 1 | |
| 33 | 94279 | PULLEY, IDLER DOUBLE VEE | 1 | |
| 34 | 94269 | SPACER, REBA DECK | 1 | |
| 35 | 160138 | SCREW, 3/8-1 6X3.00 HHC | 1 | |
| 36 | 94973-853 | IDLER ARM ASSEMBLY- | | |
| 36-1 | 9435 2 | SPRING, -GUIDE BELT | | |
| 36-2 | 710264 | SCREW, 114-20X.50 WAHHTAP | | |
| 37 | 7 10098 | BOLT, 50X.75 HSH 3/8-16Z 9X39 | 1 | |
| 3 | 6 | 94276 | LINK, BRAKE RH | |
| 39 | 316079 | WASHER, FLAT .406X .82X.040 | | |
| 4 0 | 8260 | PIN, HAIR, .091 DIA X1.66LG | 3 | |
| 41 | 94280 | PULLEY, V IDLER 4" | 1 | |
| 42 | 710140 | NUT, 3/8-16HWDFLLK MACK 15X84 | 1 | |
| 43 | 710234 | SPRING, EXTN 5.40X.71400 | 1 | |
| 50 | 341593-853 | PLATE - SUSPENSION ASSY | 1 | |
| 5 0 - 1 | 94128 | PLATE - SUSPENSION | 1 | |
| 50-2 | 94055 | SUSPENSION BRKT REAR | | |
| 50-3 | 710095 | SHOULDER BOLT 3/8-16 (9X52) | | |
| 50-4 | 710140 | NUT, 3/8-16 MACK (15X84) | 1 | |
| 51 | 710094 | BOLT, SHOULDER .375 (9X51) | 2 | |
| 52 | 710112 | SPRING, TORSION .68LG RH (166X42) | 1 | |
| 53 | 7101 13 | SPRING, TORSION .68LG LH (166X43) | 1 | |
| 54 | 710140 | NUT, 3/8-1 GHWDFLLK MACK (15X84) | 2 | |
| 55 | 94068 | KNOB | 2 | |
| 56 | 94137 | PAD, FRICTION | 2 | |
| 57 | 710195 | WASHER (17X45) | 2 | |
| 58 | 94064 | PIN, HANGER | 2 | |
| 59 | 710116 | WASHER, FLAT. 550X1.00X11(17X103) | 2 | |
| 60 | 710108 | PIN, HAIR (31X4) | 2 | |
| 61 | 341594-853 | ASM. PLATE REAR SUS BRKT LH | 1 | |
| 61-1 | 94128 | PLATE - SUSPENSION | 1 | |
| 61-2 | 94055 | SUSPENSION BRKT REAR | 1 | |
| 61-3 | 710095 | SHOULDER BOLT 3/8-16 (9X52) | 1 | |
| 61-4 | 710140 | NUT, 3/8-16 MACK (15X84) | 1 | |
| 64 | 710233 | SPRING, EXTN 4.20X.750D | 1 | |
| 65 | 94275 | GUIDE BELT | 2 | |
| 66 | 710108 | PIN, HAIR (31 X4) | 2 | |
| 70 | 94058-853 | BRACKET, FRT SUSPENSION | | |
| 71 | 710094 | BOLT, SHOULDER .375 (9X51) | 2 | |
| 72 | 710140 | NUT, 3/8-16HWDFLLK MACK (15X84) | 2 | |
| 73 | 94158 | ZINC ROD, HANGER | 1 | |
| 7 | 4 | 710108 | PIN, HAIR (31X4) | |
| 77 | 710658 | SPRING, EXTENSION | 1 | |
| 78 | 996416 | WASHER, FLAT. 391X1.00X.125 | 1 | |

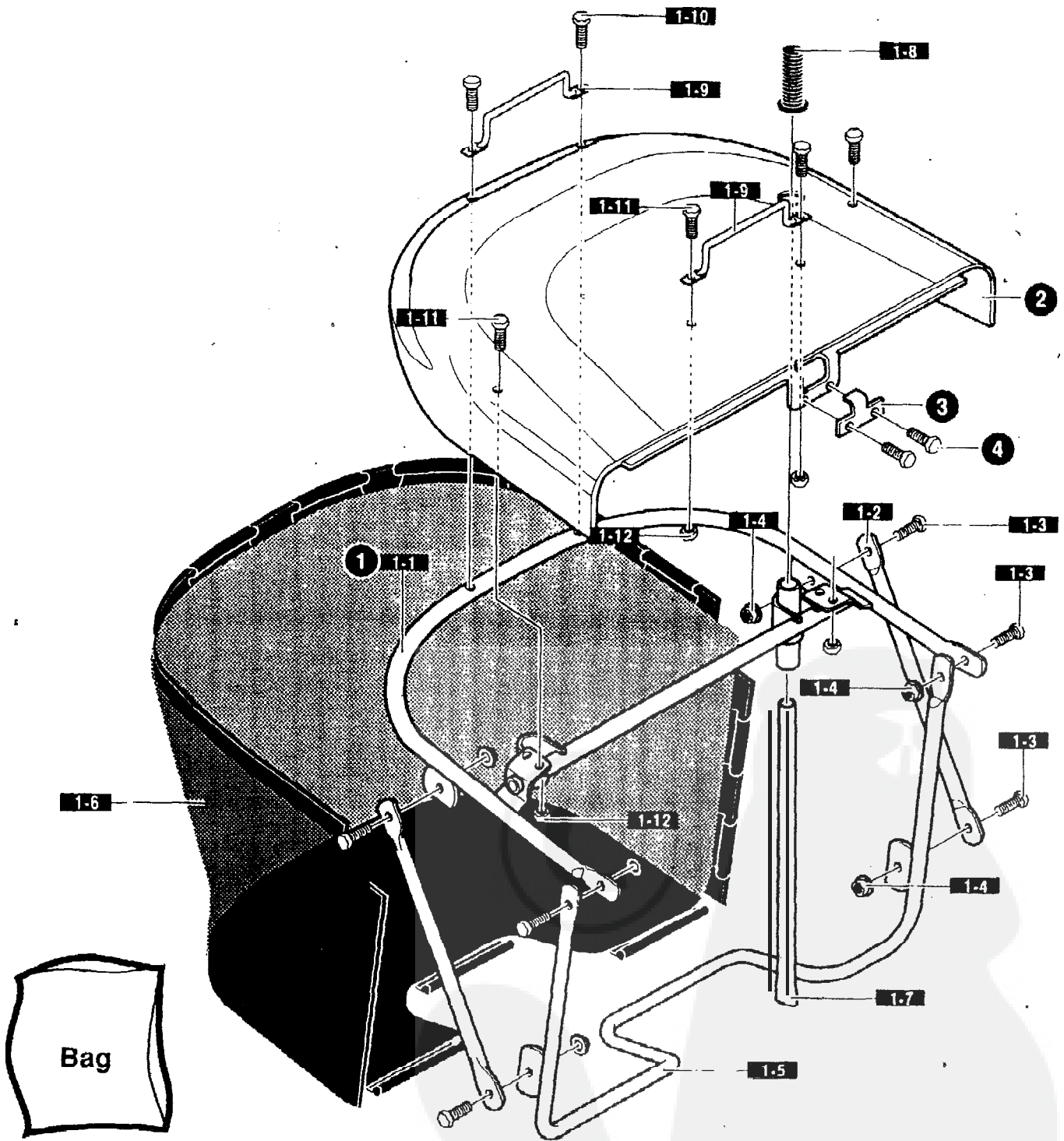


NOTE: ALWAYS USE ORIGINAL EQUIPMENT PARTS. Use of service/replacement parts other than original equipment parts may void your warranty.

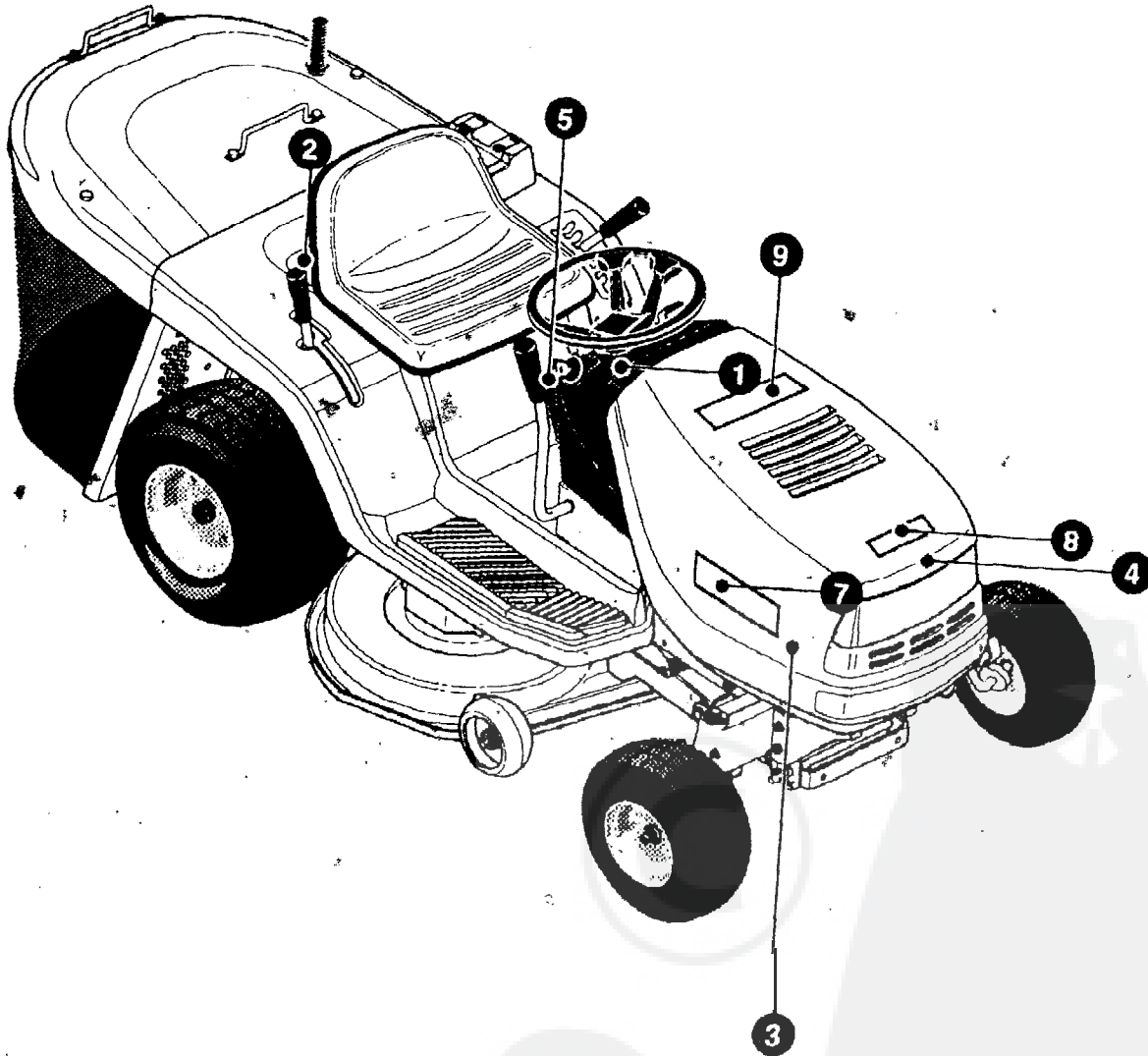
ALL UNNUMBERED ITEMS ARE INTERCHANGEABLE WITH OPPOSITE SIDE

340977A

| KEY NO. | PART NO. | DESCRIPTION | QTY | |
|---------|-------------|--------------------------------|------------------------------|---|
| 2 | 94305 | ASM.JACKSHAFT HOUSING W/VENTS | 2 | |
| 2-1 | 94282 | HOUSING, JACKSHAFT | 1 | |
| 2-2 | 92282 | BRNG, LOWER JACKSHAFT | 1 | |
| 2-3 | 92281 | BRNG, UPPER JACKSHAFT | 1 | |
| 2 - 4 | 90904 | SPACER, REBA JACKSHAFT | 1 | |
| 3 | 92425 | PULLEY, DECK REBA | 2 | |
| 4 | 91922 | JACKSHAFT, 7.76LG-9/16-18TH | 2 | |
| 5 | 710117 | WASHER, FLAT .625X1.00X.188 | 1 | |
| 6 | 91903 | SPACER | 2 | |
| 8 | 710408 | NUT, 9/16-18 CTLK (15X101) | 2 | |
| 9 | 94207 | ADAPTER, DECK/BLADE | 2 | |
| 10 | 94208 | BLADE, 40" RH REAR DISCHARGE | 1 | |
| 1 | 1 | 94209 | BLADE, 40" LH REAR DISCHARGE | 1 |
| 12 | 710118 | WASHER, FLAT.625X1.75 17X166. | 2 | |
| 13 | 710117 | WASHER, FLAT .625X1.00X. 188 | 2 | |
| 14 | 7 1 0 1 0 4 | NUT, 9/16 REGHEX (15X100) | 2 | |
| 1.5 | 710265 | SCREW, 3/8-16X1.00 WAHHSPTAPPL | 10 | |
| 16 | 94288-853 | COVER PULLEY | 2 % | |
| 44 | 710231 | BELT, V | 1 | |
| 45 | 710232 | BELT, V- 40" DECK | 1 | |
| 46 | 92683 | GAUGE WHEEL, 4.94 DIA. | 2 | |
| 47 | 9 4 0 2 5 | BOLT, SPSH 3/8-16X.63SH3.00LG | 2 | |
| 48 | 710i 15 | WASHER, FLAT.518X.87X16 17X102 | 2 | |
| 49 | 710140 | NUT, 3/8-16HWDFLK MACK 15X84 | 2 | |



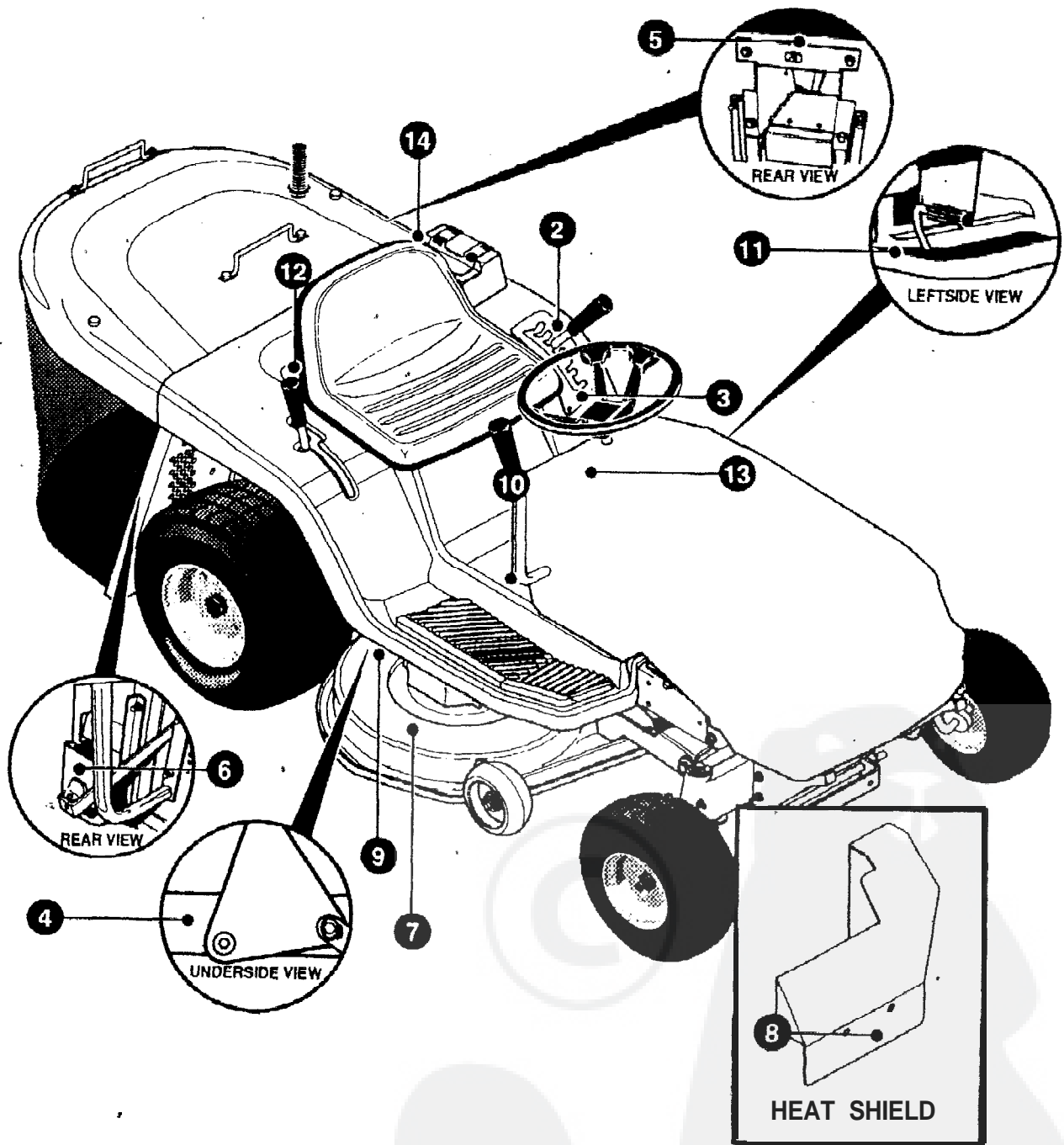
| KEY NO. | PART NO. | DESCRIPTION | QTY |
|---------|-----------|----------------------------------|-----|
| 1 | 94560 | ASM.GRASS COLLECTOR REBA | 1 |
| 1-1 | 94849 | ASSY., UPPER FRAME | 1 |
| 1-2 | 94850 | BRACE, FRAME COLLECTOR REBA | 2 |
| 1-3 | 180020 | SCREW, 114-20X.75 | 6 |
| 1-4 | 780029 | NUT, 1/4-20 HEX NYLOCK #71035 | 6 |
| 1-5 | 94851 | ASSY., FRONT FRAME REBA COLLECT | 1 |
| 1-6 | 94852 | BAG, REBA COLLECTOR | 1 |
| 1-7 | 94853 | HANDLE, DUMP REBA COLLECT. | 1 |
| 1-8 | 94854 | RUBBER GRIP 7/8" REBA | 1 |
| 1-9 | 94855 | HANDLE, REBA COLLECTOR | 2 |
| 1-10 | 710266 | SCREW, 10-24X.38 SLHWATAP | 2 |
| 1-11 | 710266 | SCREW, 10-24X.38 SLHWATAP | 4 |
| 1-12 | 308459 | NUT, #10-24 HXHONYLK | 4 |
| 2 | 94908-836 | TOP COVER, COLLECTOR REBA | 1 |
| 3 | 94244 | BRACKET, SWITCH | 1 |
| 4 | | POP RIVET (NON SERVICEABLE PART) | |



KEY PART

| NO. | NO. | DESCRIPTION | QTY |
|-----|--------|-----------------------------|-----|
| 1 | 710615 | DECAL, DASH CHOKE-A-MAT IC | 1 |
| 2 | | REFERENCE ONLY | 1 |
| 3 | 710867 | DECAL, MIDORI MI 1500R HOOD | 2 |
| 4 | 402868 | DECAL, HOOD, IDORI | 1 |
| 5 | 710691 | DECAL, PARK BRAKE | 1 |
| 7 | 305603 | PAD, 18X6 FOAM HOOD | 2 |
| 8 | 307276 | PAD 15X7 FOAM HOOD | 1 |
| 9 | 307277 | PAD 12X4 FOAM HOOD | 1 |

341791 A



| KEY NO. | PART NO. | DESCRIPTION | QTY |
|---------|----------|--------------------------------|-----|
| 2 | 710517 | DECAL, HEIGHT ADJUST 6-POS. | 1 |
| 3 | 710683 | DECAL, DECK LEVEL REBA/NLT EXP | 1 |
| 4 | 710523 | DECAL, PINCH POINTS WARNING | 1 |
| 5 | 338541 | DECAL, BAGGER "CE" M344X5939 | 1 |
| 6 | 336542 | DECAL, DRAWBAR WARN M#44X6138 | 1 |
| 7 | 402700 | DECAL, CAUTION DECK LH | 2 |
| 8 | 338543 | DECAL, HOT SURF WARN M#44X5936 | 1 |
| 9 | 710684 | DECAL, DECK BELT ROUTE REBA | 1 |
| 10 | 710534 | DECAL, CONS CAUT M#44X6815 | 1 |
| 11 | 402702 | DECAL, BRAKE/CLUTCH PICTOGRAM | 1 |
| 12 | 318010 | DECAL, TUV GS MO 44X2929 | 1 |
| 13 | 210270 | DECAL, AUTODRIVE INSTR DASH RT | 1 |
| 14 | 710771 | DECAL, REBA HYDRO DUMP VALVE | 1 |