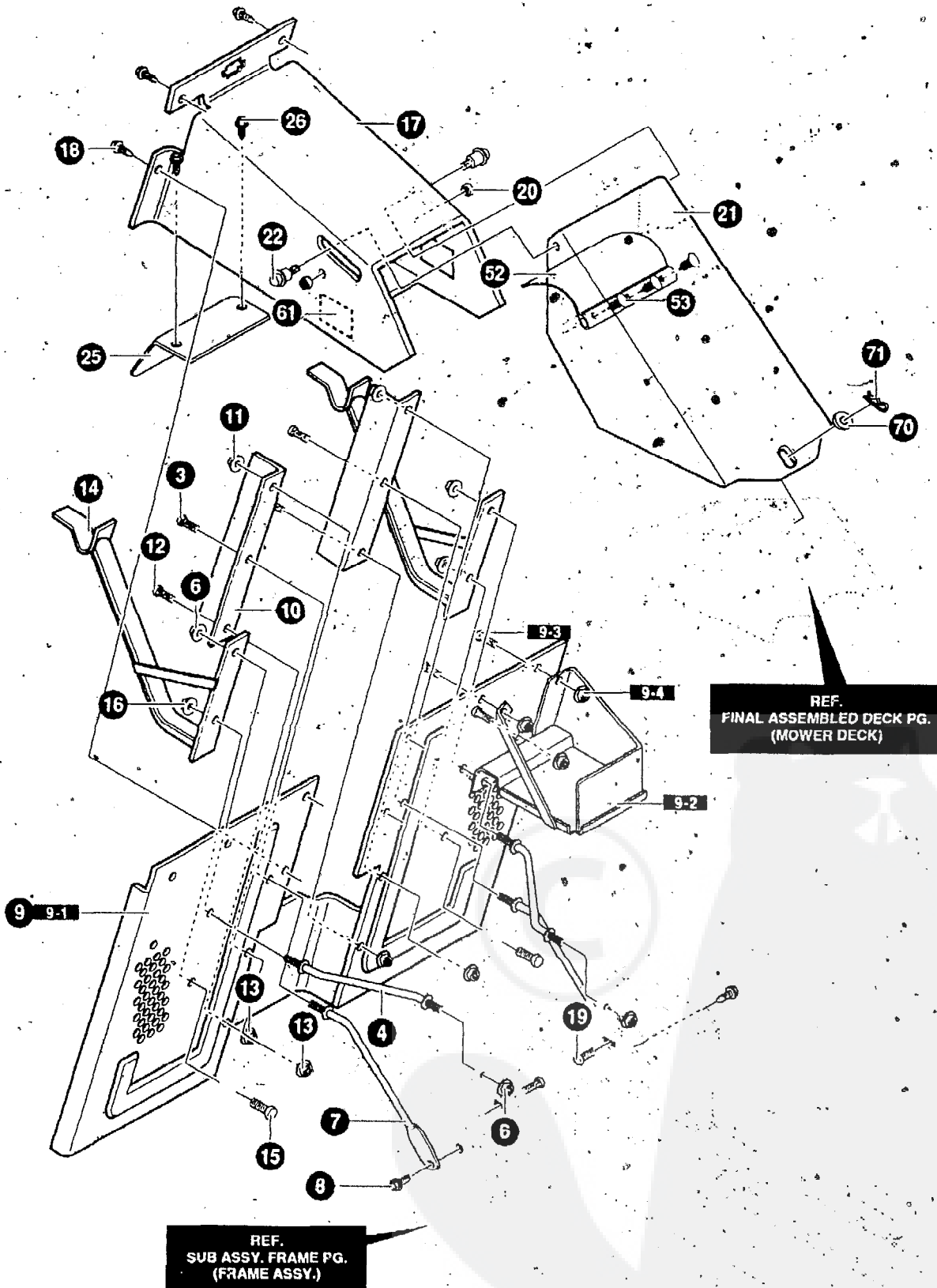


REF.  
CHASSIS REAR PG.  
(SEAT DECK ASSY.)

NOTE. ALWAYS USE ORIGINAL EQUIPMENT PARTS  
Use of service/replacement parts other than original  
equipment parts may void your warranty

ALL UNNUMBERED  
ITEMS ARE INTERCHANGEABLE  
WITH OPPOSITE SIDE

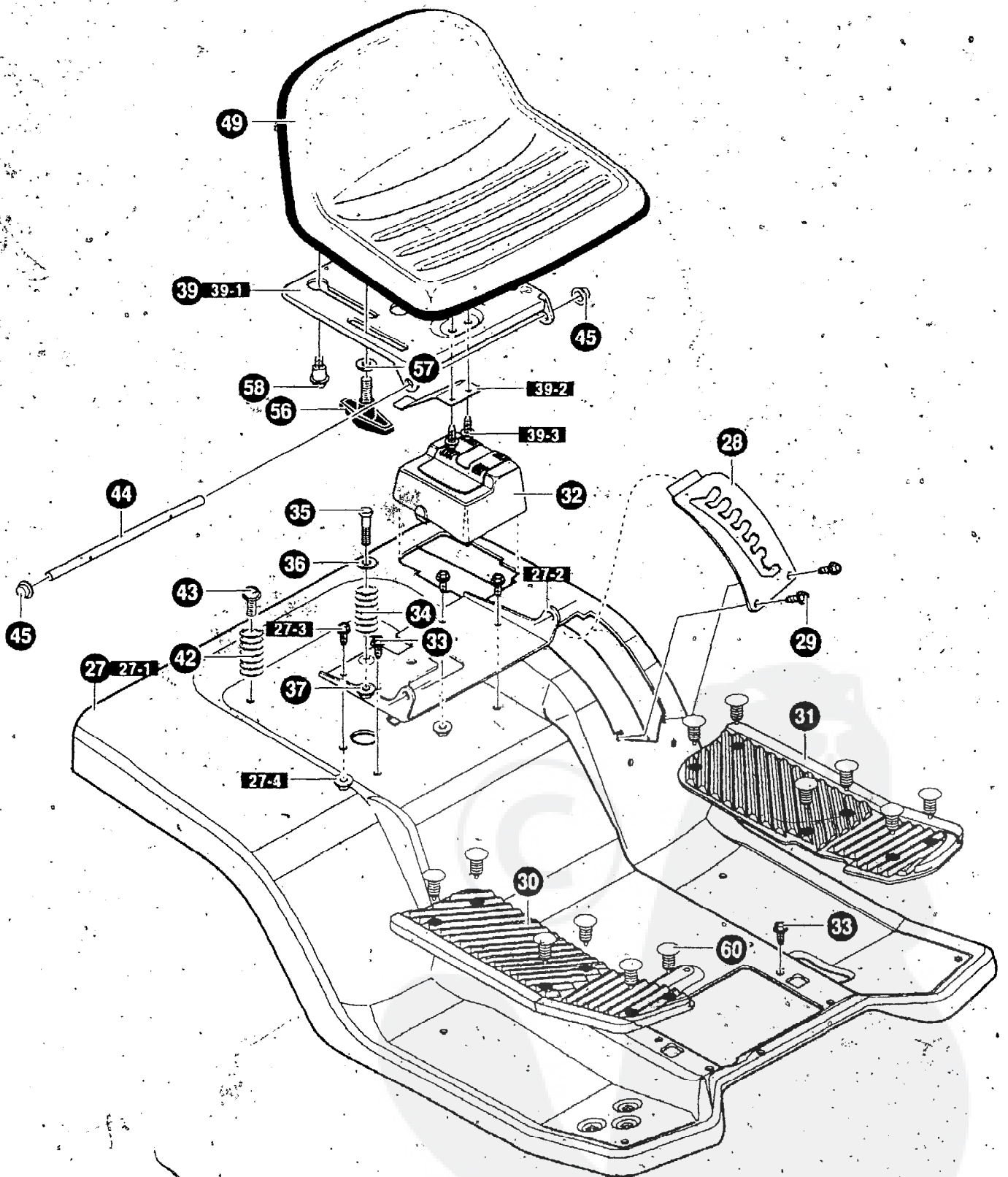
KEY #	PART #	DESCRIPTION	QTY
1	95413-853	BRACKET, HOOD RH	1
2	95414-853	BRACKET, HOOD LH	1
3	710079	SCREW, 5/16-18X.75HHWATAPSGIBP	4
4	95427	DASH	1
5	710282	SCREW, 114-14X .75PHPANTAPABBL	2
8	180020	SCREW, 1/4-20X.75 HHC	2
3	120392	WASHER, FLAT .281X .63X.065	4
10	782585	NUT, 1/4-20 REGHEXCTRLK	2
11	341569-860	ASM. LOWER CONSOLE,	1
11-1	95425	TOWER, LOWER DASH	1
11-2	95426	SUPPORT, STEERING/PTO NLT	1
11-3	710264	SCREW, 1/4-20X.50 WAHHTAP	4
11-4	9 5 4 0 6	ROD, DASH BRACE	1
11-5	710264	SCREW, 1/4-20X SO WAHHTAP	2
12	710079	SCREW, 5/16-18X.75HHWATAPSGIBP	4
15	94638-860	PANEL, ACCESS	1
16	710196	SCREW, 10-24x.500TRSEGI	2
17	94982	HOOD	1
18	302670	LENS, HEADLAMP	1
19	308492	FOIL, LENS HOOD REFLECTOR	1
20	319986	DECAL, TAPE	1
21	301452	FOIL, HEAT REFLECTOR	2
22	300317	CLEVIS PIN .375DIA X.81 LG	2
23	710343	HAIR PIN .038DIA X.1.64 LG	2
24	6711	PLASTIC WASHER .315X.75X.064	4
25	95404	BUSHING, STEERING SHAFT	1
	711093	OPERATOR'S MANUAL	



VOTE: ALWAYS USE ORIGINAL EQUIPMENT PARTS  
 Use of service/replacement parts other than original  
 equipment parts may void your warranty

ALL UNNUMBERED  
 ITEMS ARE INTERCHANGEABLE  
 WITH OPPOSITE SIDE

KEY NO.	PART-NO.	DESCRIPTION	QTY
3	710079	SCREW, 5/16-18X.75HHWATAP	2
4	94625	R O D BRACE	2
6	45171	NUT, 3/8-16HWDFL WHIZ-LOCK	4
7	94231	ROD, BRACE	2
8	710079	SCREW, 5/16-18X.75HHWATAP	2
9	341493-853	BACK PLATE/BATTERY ASSEMBLY	1
9-1	9 4 5 6 9	BACK PLATE ASSEMBLY REBA	1
9-2	94563	BATTERY TRAY WELD ASM.	1
9-3	180073	SCREW, 5/16-18X.50 HHC	3
9-4	45174	NUT, 5/16-18HEXWDFLLK WHIZ	3
10	94232-853	BRACE, BACK PLATE	2
11	45171	NUT, 3/8-16HWDFLLK WHIZ	2
12	328154	SCREW, 5/16-18X1 .OWDFLLK	4
13	45174	NUT, 5/16-18WDFLLK (15X88)	4
14	94637-853	ASSY, COLLECTOR SUPPORT	2
15	328 154	SCREW, 5/16-18X1 .OWDFLLK	2
16	45174	NUT, 5/16-18HEXWDFLLK WHIZ	2
17		CHUTE WELD ASM. UPPER	1
18	94093853	SCREW, 5/16-18X.75HHWATAP	4
19	57101	BOLT, 5/16-18X .75CARR	2
20	45174	NUT, 5/16-18 HEXWDFLLK WHIZ	2
21	94970-853	CHUTE WELD ASM. MIDDLE	1
22	51601	BOLT, 500X .453 HSH 3/8-16	2
25	94263-853	COVER, T-AXLE SHIELD	1
26	710264	SCREW, 1/4-20X.50 WAHHTAP	2
52	94264	FLAP, CHUTE REBA	1
53	309235	RATCHET FASTENER	3

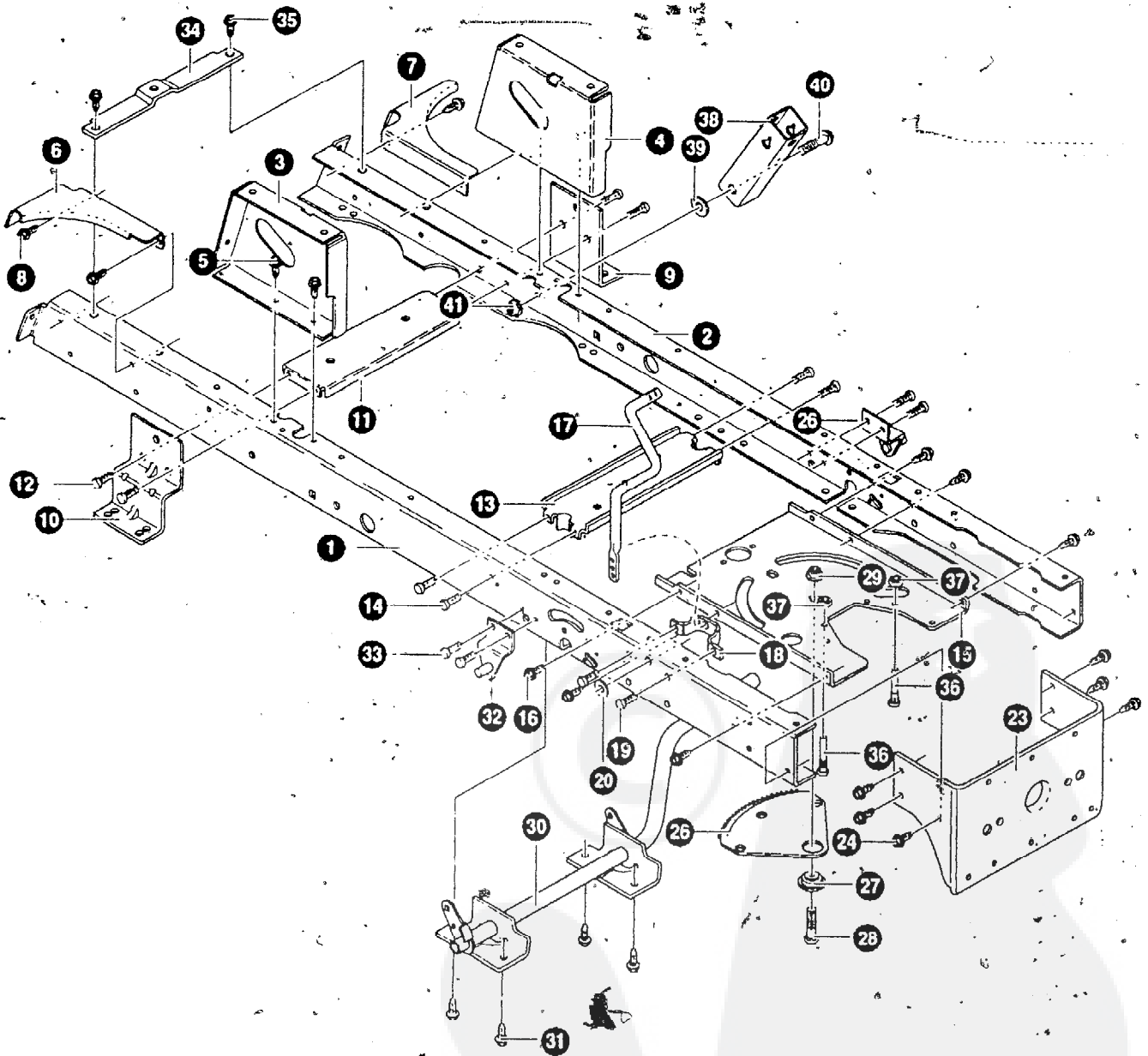


NOTE: ALWAYS USE ORIGINAL EQUIPMENT PARTS:  
 Use of service/replacement parts other than original  
 equipment parts may void your warranty.

ALL UNNUMBERED  
 ITEMS ARE INTERCHANGEABLE  
 WITH OPPOSITE SIDE

341250E

KEY NO.	PART NO.	DESCRIPTION	QTY
27	341495-860	ASM, SEAT DECK PEDAL GEAR REBA	1
27-1	9431 1	SEAT DECK, GEAR DRIVE	1
27-2	94153	BRACKET, PIVOT SEAT	1
27-3	710279	SCREW, 5/16-18X .625	2
27-4	710205	NUT, 5/16-18 WDFLLK (15X88)	2
28	94243-853	PLATE, LIFT DETENT	1
29	710196	S C R E W , 10-24X.500TRSEGI	2
30	95469	FOOTPAD RH	1
31	95408	FOOT PAD LH	1
32	94200	COVER, BATTERY	1
33	710079	SCREW, 5/16-18X.75HHWATAP	3
3 4	710136	SPRING, COMPRESS 4.57LG X 1.17	1
35	71 0093	BOLTSHOULDER 1/4-20NC-2A(9X55)	1
36	94155	WASHER CUP-ZINC	1
37	710280	NUT, 1/4-20 WDFLLK (15X89)	1
39	341494-860	SUB ASM. SEAT SUPPORT REBA	1
39-1	94154	SUPPORT, SEAT	1
39-2	94057	SPRING - LEAF	1
39-3	7,102 64	SCREW, 1/4-20X.50 WAHHTAP	2
42	710109	SPRING, COMPRESS 2.43LG (164X30)	2
43	710679	SCREW, 5/16-18X.75HHWATAP	2
44	94156	ZINC HINGE SEAT PIVOT	1
45	710192	NUT, PUSH CAP .375 (28X23)	2
49	95415	S E A T M5CV1500 a	1
56	94160	BOLT, WING 5/16-18	2
57	710281	WASHER, FLAT.344X .62X.06	2
58	710101	BOLT, SHOULDER 5/16-18NC (9X56)	2
60	309235	FASTENER, RATCHET	6
61	318197	PAD, ADHESIVE.	3
70	71011.6	WASHER, FLAT .550X1.00X11 17X103	1
71	710343	PIN, HAIR .38 DIA X 1.64LG	1

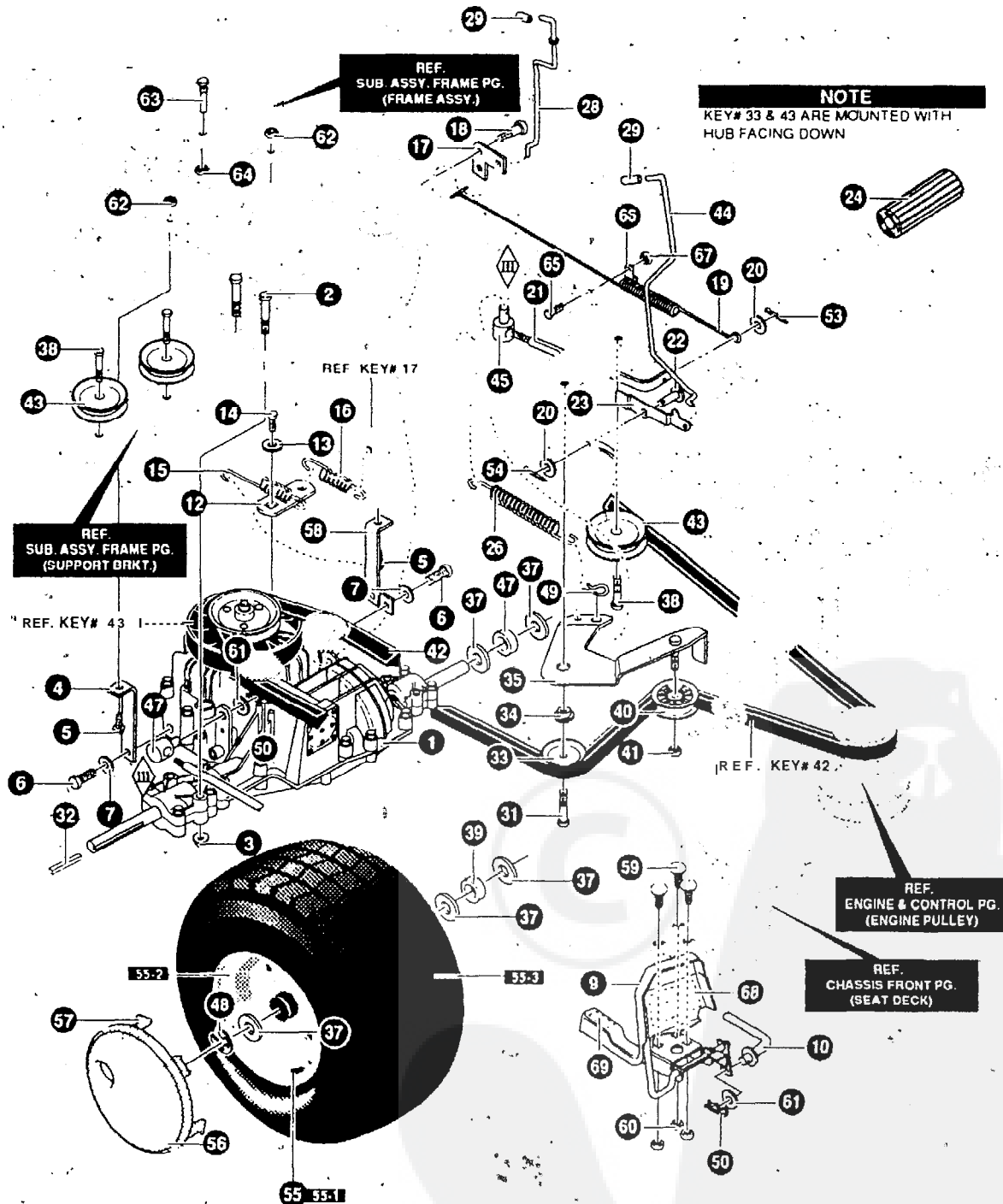


NOTE ALWAYS USE ORIGINAL EQUIPMENT PARTS  
 Use of service/replacement parts other than original  
 equipment parts may void your warranty.

ALL UNNUMBERED  
 ITEMS ARE INTERCHANGEABLE  
 WITH OPPOSITE SIDE

KEY NQ.	PART NO.	DESCRIPTION	QTY
1	94564	FRAME,RAIL Rtt REBA	1
2	94565	FRAME,RAIL LH REBA	1
3	94634	SUPPORT,SEAT RH	1
4	94633	SUPPORT,SEAT LH	1
5	710079	SCREW, 5/16-18X.75HHWATAP	4
6	94561	BRACE, BACKPLATE RH	1
7	94562	BRACE, BACKPLATE LH	1
8	710079	SCREW, 5/16-18X.75HHWATAP	4
9	94008	BRACKET,TRANSAXLE	1
10	94234	BRACKET,T/A RH-VST, LH-VST	1
11	94236	ASSY, IDLER MOUNT, REAR	1
12	710079	SCREW, 5/16-18X.75HHWATAP	4
13	94237	ASM. IDLER MOUNT,FRONT	1
14	710079	SCREW, 5/16-18X.75HHWATAP	4
15	94003	PLATE,STEERING MOUNTING	1
16	710079	SCREW, 5/16-18X.75HHWATAP	6
17	94019	CRANK, PTO (DRILLED)	1
18	94005	BRACKET, BELL CRANK	1
19	710079	SCREW, 5/16-18X.75HHWATAP	2
20	120395	WASHER, FLAT .469X .92X.065	1
23	94013	BRACKET, HANGER REAR	1
24	710079	SCREW, 5/16-18X.75HHWATAP	6
26	94121	GEAR, SECTOR	1
27	94123	B E A R I N G , S E C T O R G E A R	1
28	710312	SCREW, 5/16-18X1.00	1
29	710105	NUT, 5/16-18 HWDFLLK (15X113)	1
30	94241	ASM.CLUTCH/BRAKE PEDAL	1
31	710079	SCREW, 5/16-18X.75HHWATAP	4
32	94285	BRACKET SUSPENSION ASM.	2
33	710079	SCREW, 5/16-18X.75HHWATAP	4
34	94566	BRACE, RAIL	1
35	710079	SCREW, 5/16-18X.75HHWATAP	2
36	93349	SCREW GUIDE 5/16-18	2
37	710204	NUT,5/16-18 HEXWDFLLK WHIZ PL	2
38	94015	BRACKET, PIVOT	1
39	845 0	WASHER, FLAT .390X1.25X.1 19	1
40	71000 0	BOLT, .562X1.563 HSH 3/8-16	1
41	71014	NUT,3/8-16HWDFLLK MACK 15X84	1



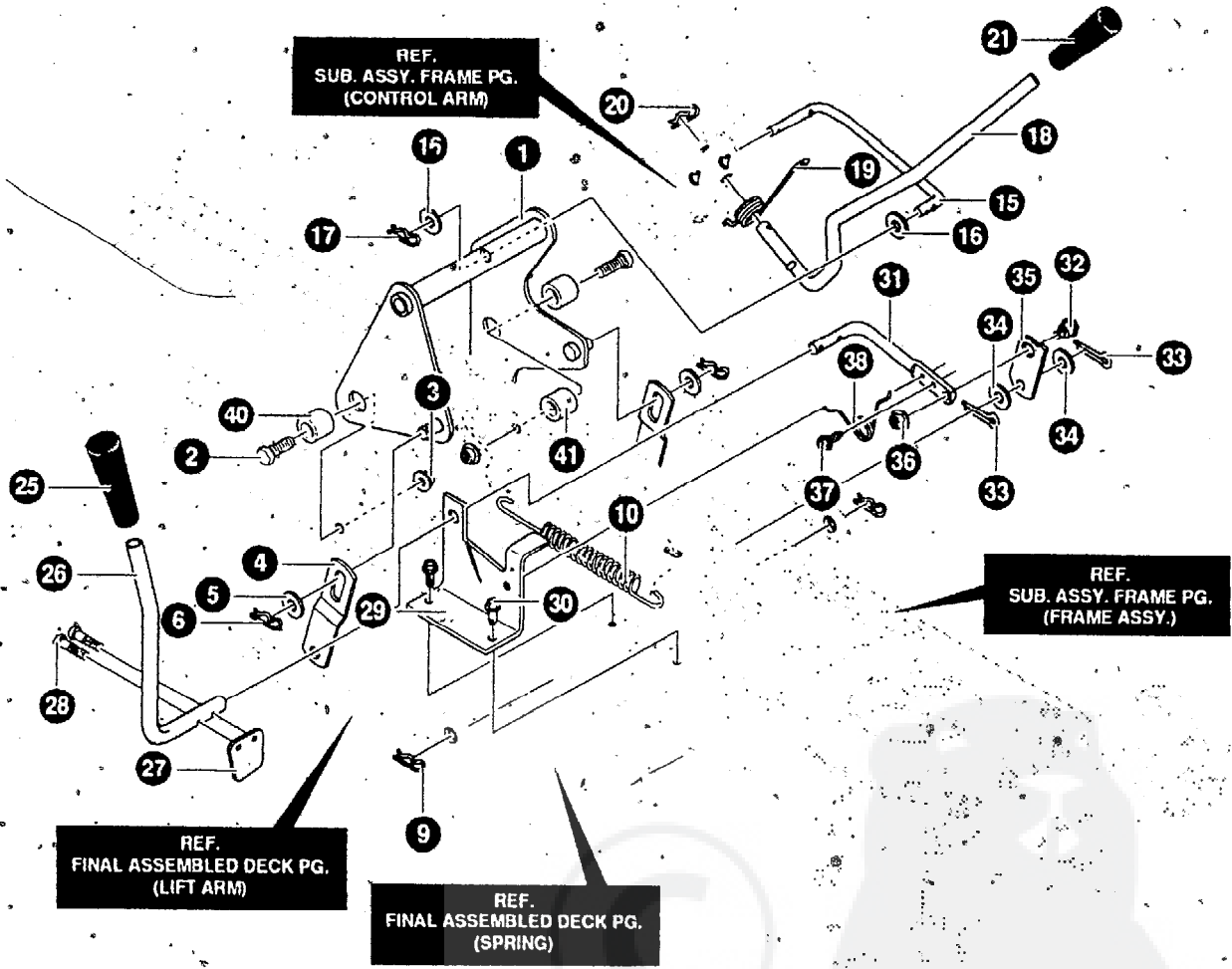


NOTE: ALWAYS USE ORIGINAL EQUIPMENT PARTS  
Use of service/replacement parts other than original equipment parts may void your warranty

ALL UNNUMBERED ITEMS ARE INTERCHANGEABLE WITH OPPOSITE SIDE

KEY NO.	PART NO.	DESCRIPTION	QTY
1		TRANSAXLE HYDRO VST205-025BM	1
2	180091	SCREW 5/16-18X2.50 HHC	4
3	710205	NUT, 5/16-18 WDFLLK (15X88)	4
4	94224-853	BRACKET, STABILIZER	1
5	328154	SCREW, 5/16-18X1.0 WDFLLK	1
6	35498	SCREW, 5/16-18X.75 WAHHTAP	1
7	120638	WASHER, HVSPTLK .328X.60X.09	1
9	94422-853	PEDAL ASSEMBLY	1
10	94304	FOOTCONTROL ROD	1
12	3 2 3 2 1 2	SHIFT BRACKET	1
13	57157	WASHER .750X.250 SP-TRANSAXLE	1
14	56255	SCREW, 1/4-28X.75 NYLHHC	1
15	94622	SPRING, TRANSAXLE DISCONNECT	1
16	326780	SPRING, TENSION 3/8ODX2.18X.055	1
17	94621-853	BRACKET, DISCONNECT LEVER.	1
18	334126	BOLT, .437X.136 5/16-18	1
19	95424	SPRING, BRAKE 35.00	1
20	120394	WASHER, FLAT .406X.81X.065	1
21	94573	ROD, CLUTCH	1
22	4 9 3 3 2	PIN, CLEVIS .375DX.81LG.	1
23	94045	CATCH, PARK BRAKE	1
24	21544	PEDAL, BRAKE/CLUTCH STD NLT	1
26	710139	SPRING, TENS .09X. X5.	1
27	782585	N U T , 1/4-20 REG HEX CTRLK	1
28	94653	ROD, DISCONNECT CONTROL	1
29	335980	CAP, DUMP VALVE ROD .25IDX.75	1
31	710082	SCREW, 3/8-16X1.5 HHCFLTHR5	1
32	52928	KEY, SQUARE .187SQX2.25LG	2
33	782964	PULLEY, IDLER #35374	1
34	95423	SPACER, SHOULDER	1
35	94238-853	ASSY. IDLER ARM TRACTION	1
37	710131	WASHER, FLAT .755X1.31X.075	6
39	95421	SPACER, .87 X 1.78	2
40	91179	PULLEY, IDLER 2.75 DIA.	1
41	45905	NUT, 3/8-16 HWDFLLK MACK	1
42	94609	BELT, V 4L 112.75	1
43	782964	PULLEY, IDLER #35374	3
44	94568	PARK BRAKE CONTROL ROD	1
45	710059	NUT, 5/16-18X3/8 ADJUSTING.	1
47	92132	ADJUSTING NUT 1/2-13	1
48	36625	RING, RETEX .57X.05TRU5133-75	2
49	56180	PIN, HAIR .53DIA X1.62LG	1
50	710343	PIN, HAIR .038 DIA X1.64LG	1
53	121222	PIN, COTTER .090 DIA X.75LG	1
54	121222	PIN, COTTER .090 DIA X.75LG	1
55	6 9 2 2 9 0	TIRE & RIM 20X8-8	2
55-1	338512	VALVE STEM	2
55-2	338524	R I M	2
55-3	338526	TIRE	2
56		NOT USED ON THIS UNIT	
57		NOT USED ON THIS UNIT	
58	94225-853	ASM. WELD, BKT STABILIZER LH	1
59	57101	BOLT, 5/16-18X.75 CARR.	3
60	4 5 1 7 4	NUT, 5/16-18 HEX WDFLLK WHIZ	3
61	996425	FLAT WASHER .515X.89X.064	2
62	45174	NUT, 5/16-18 HEX WDFLLK WHIZ	2
63	93349	SCREW GUIDE 5/16-18	1
64	710204	NUT, 5/16-18 HEX WDFLLK WHIZ	1
65	180016	SCREW, 1/4-20 X.50.	1
66	57569	RETAINER .31 IDX.62X.03 WIRE	1
67	51335	NUT, 1/4-20 WDFLWHIZ-LK	1
68	93248	PEDAL, SANDPAPER	1
69	93249	PAD, TOE SANDPAPER	1

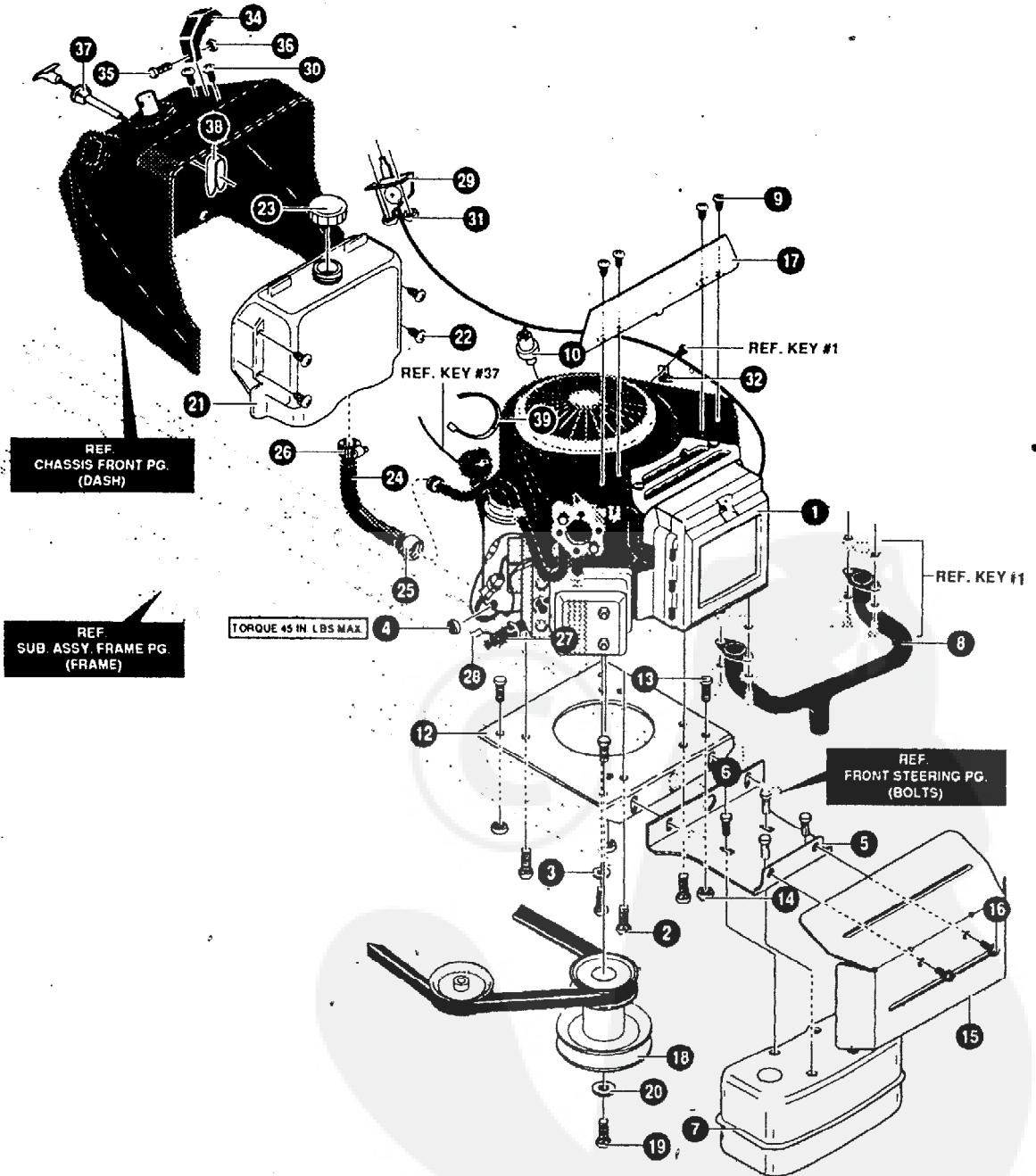
KEY NO.	PART NO.	DESCRIPTION	QTY
1	95405-853	AXLE, CAST MACHINED	1
2	94178-853	SPINDLE, RH MO#94178	1
2-1	94014	SPINDLE AXLE	1
2-2	94125	ARM, STEERING RH	1
2-3	623 168	DUST CUP	1
3	94179-853	SPINDLE- LH WELD ASSEMBLY	1
3-1	94014	SPINDLE AXLE	1
3-2	94126	ARM, STEERING RH	1
3-3	623168	DUST CUP	1
4	92527	BEARING, SPINDLE	4
5	710129	WASHER, .766 ID X 1.62ID16GA	2
6	710103	E-RING .574ID X .050/.750SH 11 X3	2
7	706	ZERK, GREASE FITTING	2
8	341491-853	ASM.FRONT AXLE/DECK HANGER	1
8 - 1	94007	HANGER, AXLE	1
8-2	94290	HANGER, DECK RH	1
8-3	94289	HANGER, DECK LH	1
8-4	710079	SCREW, 5/16-18X.75HHWATAPSGIBP	2
12	180113	S-CREW, 5/16-18X3.00	2
13	710205	NUT, 5/16-18 WDFLLK (15X88) Z	2
14	710079	SCREW, 5/16-18X.75HHWATAPSGIBP	2
15	94020-853	DRAG LINK RH	1
16	94021-853	DRAGLINK, LH	1
17	710440	BOLT, HHSH (9X57)	2
18	710140	NUT, 3/8-16HWDFLLK MACK 15X84	2
19	710082	SCREW, 3/8-36X1.5	2
20	710083	WASHER, FLAT .391X1.00X.083	2
21	710142	WASHER, FLAT.406X.81X16GA	2
22	710140	NUT, 3/8-16HWDFLLK MACK 15X84 Z	2
23	710079	SCREW, 5/16-18X.75HHWATAPSGIBP	3
24	95441	STEERING WHEEL	1
26	94127	BEARING-STEERING	1
27	94124	BEARING-LOWER	1
28	710079	SCREW, 5/16-18X.75HHWATAPSGIBP	2
29	94122	GEAR PINNION	1
30	710102	RING, RET E.54ID .59SH (14X25)	1
31	692287	TIRE & RIM 15X6-6	2
31-1	3385 12	VALVE STEM	2
31-2	338517	RIM; CARLISLE	2
31-3	338513	BEARING	2
31-4	338516	TIRE. 15X6X6	2
32		NOT USED	
33		NOT USED	
34	710350	WASHER, FLAT.765X1.62X.065Z	2
35	36625	RETAINING RING	2
40	94310	GUIDE-STACK PULLEY BELT	1
41	45174	NUT, 5/16-18 HEXWDFLLK WHIZ	2



NOTE: ALWAYS USE ORIGINAL EQUIPMENT PARTS.  
 Use of service/replacement parts other than original  
 equipment parts may void your warranty.

ALP UNNUMBERED  
 ITEMS ARE INTERCHANGEABLE  
 WITH OPPOSITE SIDE

KEY N O .	PART NO.	DESCRIPTION	QTY
1	94299-853	LIFT ARM WELD ASSEMBLY	1
2	710222	SCREW, 1/2-13X1.50 (1X127)	2
3	710223	NUT, 1/2-13 LOCK (15X41)	2
4	94262-853	BRACKET, LIFT LINK	2
5	710119	FLATWASHER (17X91)	2
6	7 1 0 3 4 3	PIN, HAIR .38DIA.X1.64LG	2
9	710108	PIN, HAIR (31X4)	2
1 0	710235	SPRING, EXTENSION 9.82X1.01OD	1
15	94276	LINK, LIFT HANDLE	1
1 6	710119	FLATWASHER (17X91)	2
17	710343	PIN, HAIR .38DIA.X1.64LG	1
18	94029	HANDLE, LIFT	1
19	710111	TORSION SPRING .657LG (166X40)	1
20	710108	PIN, HAIR (31X4)	1
21	92697	GRIP, BLACK	1
24	710116	WASHER, FLAT .550X1.00X11 17X103	1
25	92698	GRIP, BLACK	1
26	94826	PTO LEVER	1
27	94022	PADDLE, SWITCH	1
28	710137	SCREW, THD FORMING	2
29	94018-853	BRACKET, PTO	1
30	710079	SCREW, 5/16-18X.75HHWATAP	2
31	94017	LEVER, PTO	1
32	710098	BOLT.50X.75 HSSH 3/8-16Z 9X39	1
33	36368	PIN, HAIR .072DIA X1.13LG	2
34	710115	FLATWASHER .518X.87X16	2
35	94004	LINK P T O ZINC	1
36	710140	NUT, 3/8-16HWD FLLK MACK (15X84)	1
37	710079	SCREW, 5/16-18X.75HHWATAP	1
38	710141	TORSION SPRING .33LG (166X39)	1
40	94309	SRACER.513 ID X .880 OD	2
41	56150	SPACER, SLEV. .94X1.13X.531	1

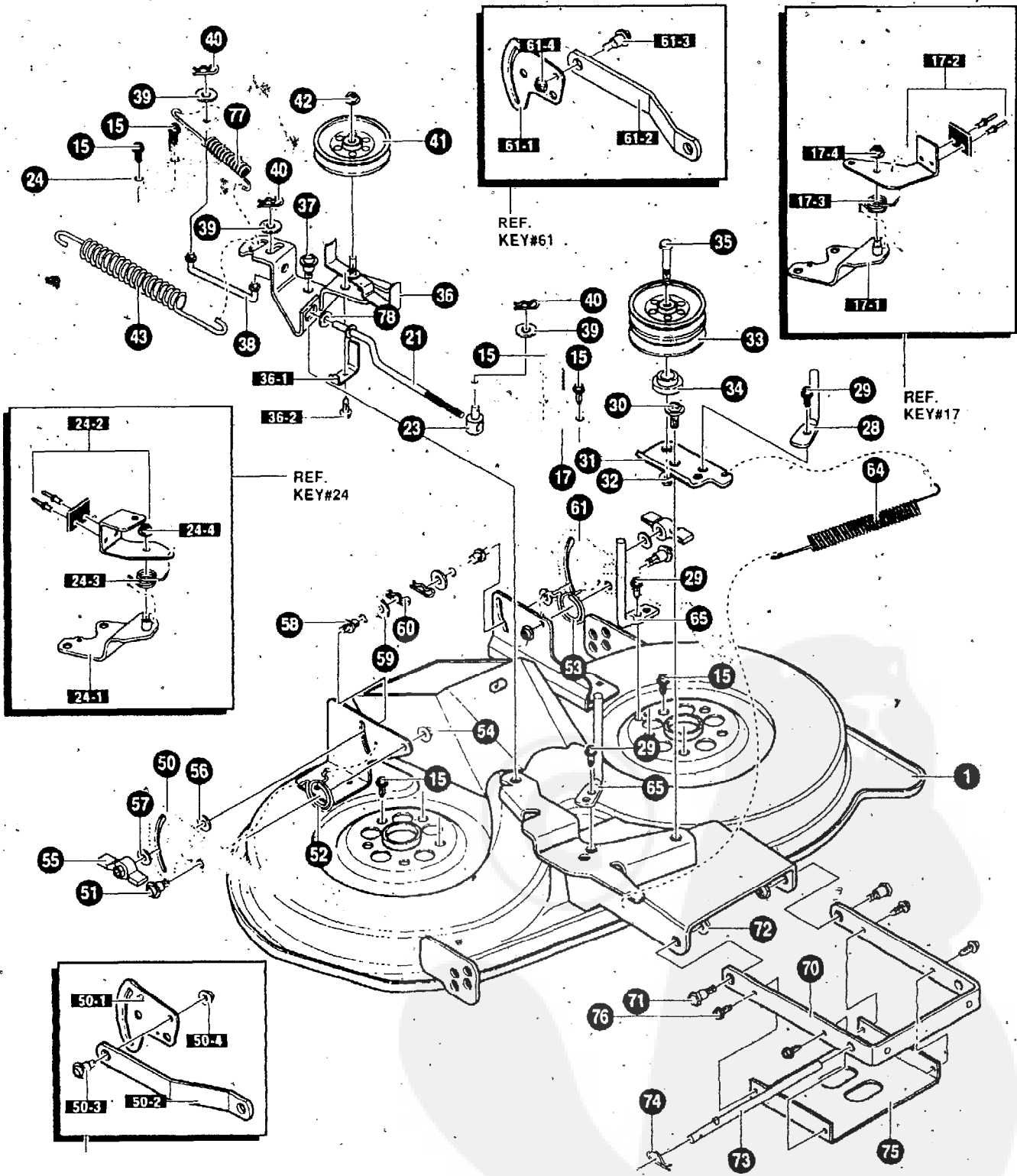


NOTE: ALWAYS USE ORIGINAL EQUIPMENT PARTS. Use of service/replacement parts other than original equipment parts may void your warranty.

ALL UNNUMBERED ITEMS ARE INTERCHANGEABLE WITH OPPOSITE SIDE

341803A

KEY PART NO. NO.	DESCRIPTION	QTY
1	ENGINE 16HP B&S V-TWIN(SEE ENGINE MANUAL)	1
2	50947 SCREW, 3/8-16X1.25 WAHHTAP	4
3	138489 WASHER, EXLK.384X.69X.04	1
4	124818 NUT, 1/4-20 REGHXJAM	1
6	94306-853 BRACKET, MUFFLER MOUNT REBA	1
7	94654 44811 SCREW, 1/4-20X.75 WAHHTAP	4
	MUFFLER, SINGLE-CYLINDER	1
8	94661 EXHAUST MANIFOLD B&S	1
9	57366 SCREW, 1 O-16X.50 DRILL TITE	4
10	314797 OIL SENSOR, B&S TWIN CYL	1
12	94006-853 ENGINE PLATE	1
13	710079 SCREW, 5/16-18X.75 HHWATAP	4
14	710205 NUT, 5/16-18 WDFLLK (15X88)	4
15	94860-853 HEAT SHIELD	1
16	710079 S C R E W , 5/16-18X.75 HHWATAP	2
17	321300-853 HEAT SHIELD	1
18	94308 PULLEY, ENGINE	1
19	120383 WASHER, REGSPTLK	
20	433146 SCREW 7/16-20X4.25	1
21	314991 FUEL TANK 2 GAL	1
22	\$7220 SCREW, #12X.50 PHPNTAP	4
23	300304 CAP, GAS	1
24	57876 TUBING, GAS LINE .25X.50	13 IN.
25	47345 CLAMP, HOSE SCREW TYPE	1
26	47345 CLAMP, HOSE SCREW TYPE	1
27	325547 OIL DRAIN VALVE ASSEMBLY	1
28	327422 CAP,OIL DRAIN VALVE ASM.YELLOW	1
29	309092 THROTTLE CONTROL	1
30	320553 SCREW, 1 O-24X.63 PHPNMA	2
31	308459 NUT, #10-24 HXHDNYLK	2
32	57569 RETAINER, WIRE	1
34	300508 THROTTLE CONTROL KNOB	1
35	159585 SCREW; #8-32X.38 PHPNMA	1
36	120622 NUT, #8-32 REGHX	1
37	94890 CHOKE 40"	1
38	314522 CLIP, CHOKE CONTROL	1
39	57444 CABLE TIE	1
40	94951 CLIP, SPEED	1



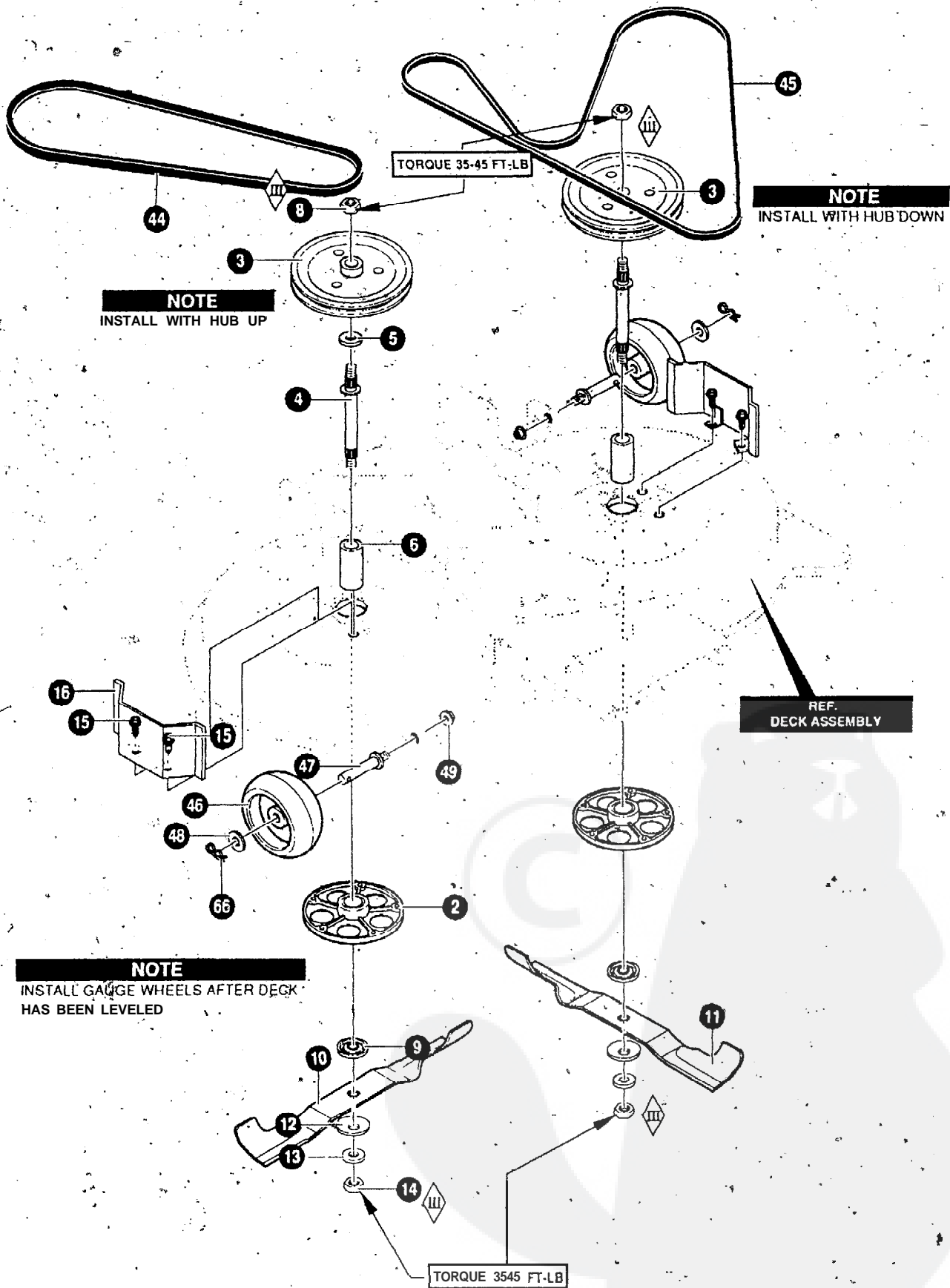
NOTE: ALWAYS USE ORIGINAL EQUIPMENT PARTS  
 Use of service/replacement parts other than original  
 equipment parts may void your warranty.

ALL UNNUMBERED  
 ITEMS ARE INTERCHANGEABLE  
 WITH OPPOSITE SIDE

340977A



KEY NO.	NO.	P	SP	DESCRIPTION	QTY
15	91303-853 710265	S		WELD ASSEMBLY DECK E W 3/8-16X1.00 WAHHSPTAPPL LIN	10
17	94665-853			NU BRAKE ARM ASSEMBLY LH	1
17-1	94293			BR BRAKE SUPPORT ASSEMBLY LH	1
17-2	94291	E		BRKE ARM ASSEMBLY LH	1
17-3	710110			RR S RING, TORSION (166X27)	1
17-4	710205			UT, 5/16-18 WDFLLK (15X88)	1
21	94277			LINK, BRAKE LH	1
23	21920			NUT,ADJ: 3/8-16TAP	1
24	94664-853			BRAKE ARM ASSEMBLY RH	1
24-1	94294			BRAKE SUPPORT ASSEMBLY RH	1
24-2	94292			BRAKE ARM ASSEMBLY RH	1
24-3	710077			SPRING, TORSION	1
24-4	710205			NUT, 5/16-18 (15X88) L L K	1
28	94274			GUIDE, BELT REBA	1
29	710098			SCREW, 5/16-18.50 HHTAP 3/8-16	3
30				BOLT, 5/8X.75 HSH 9X39	11
				ARM, DOUBLE IDLER	1
32	710140			NUT, 3/8-16HWDFLLK MACK 15X84	1
33	94279			PULLEY, IDLER DOUBLE VEE	1
34	94269			SPACER, REBA DECK	1
36	94973-853			SCREW, 3/8-16X.50 HHTAP	1
36-1	94312			SPRING, GUIDE BELT	1
36-2	710264			SCREW, 1/4-20X.50 WAHHTAP	1
37	710098			BOLT, 5/8X.75 HSH 3/8-16	1
38	94278			LINK, BRAKE RH	1
39	316079			WASHER, FLAT .406X.82X.040	1
40	710343			PIN, HAIR .038 DIA X 1.64 LG	3
41	94280			PULLEY, V IDLER 4"	1
42	710140			NUT, 3/8-16HWDFLLK MACK 15X84	1
4.3	710233			SPRING, EXTN 5.40X.71400	1
50	341593-853			PLATE - SUSPENSION ASSY	1
55-r	94128			PLATE - SUSPENSION	1
50-2	94055			SUSPENSION BRKT REAR	1
50-3	710095			SHOULDER BOLT 3/8-16 (9X52)	1
50-4	710140			NUT, 3/8-16 MACK (15X84)	1
51	710094			BOLT, SHOULDER .375 (9X51)	2
52	710112			SPRING, TORSION .68LG RH (166X42)	1
53	740113			SPRING, TORSION .68LG LH (166X43)	1
54	710140			NUT, 3/8-16HWDFLLK MACK (1.5X84)	2
56	94058			PAD, KNOB FRICTION	2
5	710195			WASHER (17X45)	2
58	94064			PIN, HANGER	2
59	710116			WASHER, FLAT .550X1.00X11 (17X103)	2
60	710343			PIN, HAIR	2
61	341594-853			ASM. PLATE REAR SUS BRKT LH	1
61-1	94128			PLATE - SUSPENSION	1
61-2	94055			SUSPENSION BRKT REAR	1
61-3	710095			SHOULDER BOLT 3/8-16 (9X52)	1
61-4	710140			NUT, 3/8-16 MACK (15X84)	1
64	710233			SPRING, EXTN 4.20X.750D	1
65	94275			GUIDE BELT	2
66	710930			PIN, CIRCLE	2
70	94058-853			BRACKET, FRT SUSPENSION	1
71	710094			BOLT, SHOULDER .375 (9x51)	2
72	941581-4			NUT, 3/8-16HWDFLLK MACK (15X84)	2
74	710108			PIN, HAIR (31X4)	1
75	94604-853			STIFFNER, FRONT HANGER	1
76	710079			SCREW, 5/16-18X.75 HHTAP	4
77	710658			SPRING, EXTENSION .00X.125	1
78	996416			WASHER, FLAT .391X1	1



**NOTE**  
INSTALL WITH HUB UP

**NOTE**  
INSTALL WITH HUB DOWN

REF.  
DECK ASSEMBLY

**NOTE**  
INSTALL GAUGE WHEELS AFTER DECK HAS BEEN LEVELED

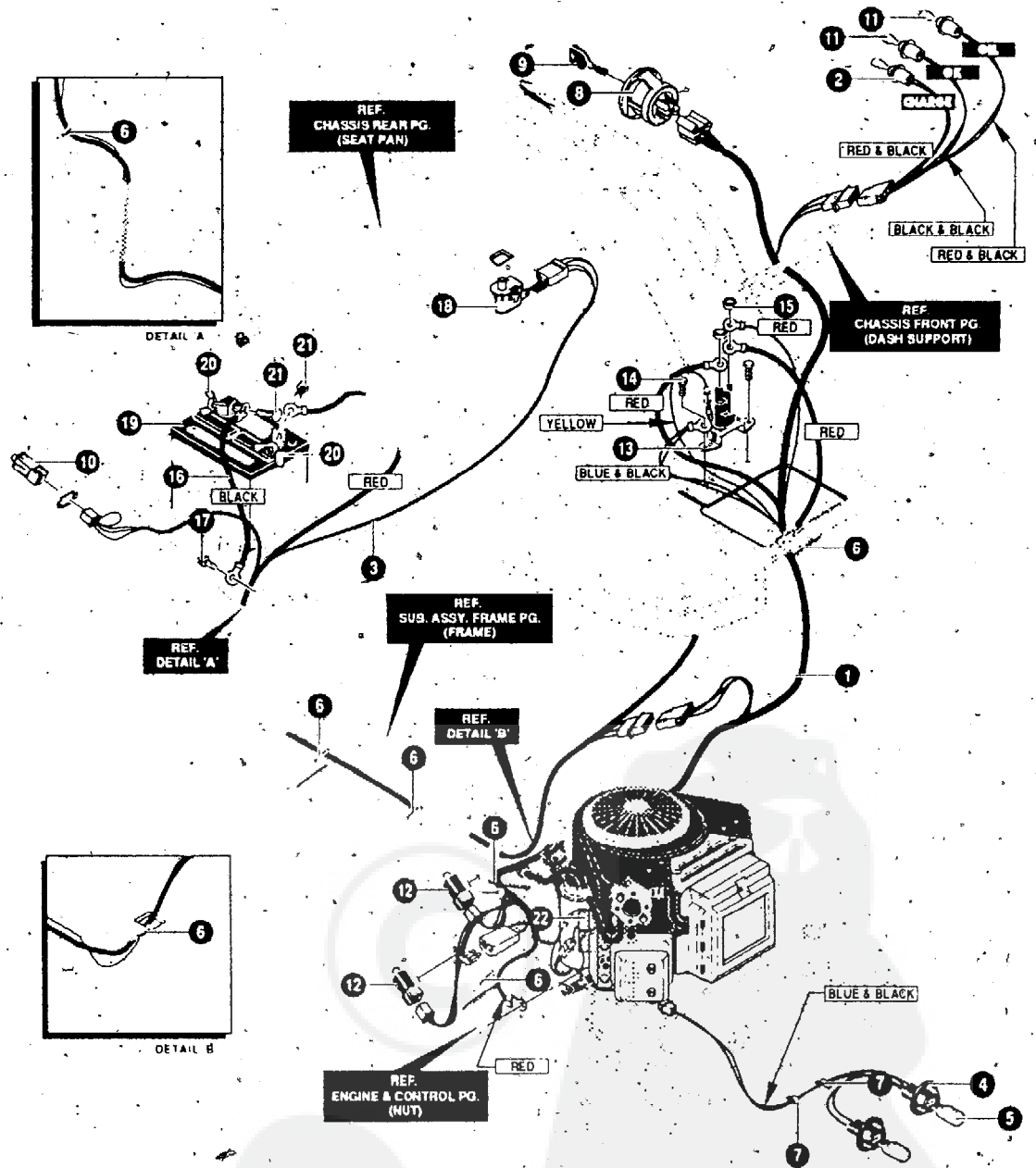
TORQUE 3545 FT-LB

NOTE: ALWAYS\* & ORIGINAL EQUIPMENT PARTS. Use of service/replacement parts other than original equipment parts may void your warranty.

ALL UNNUMBERED ITEMS ARE INTERCHANGEABLE WITH OPPOSITE SIDE

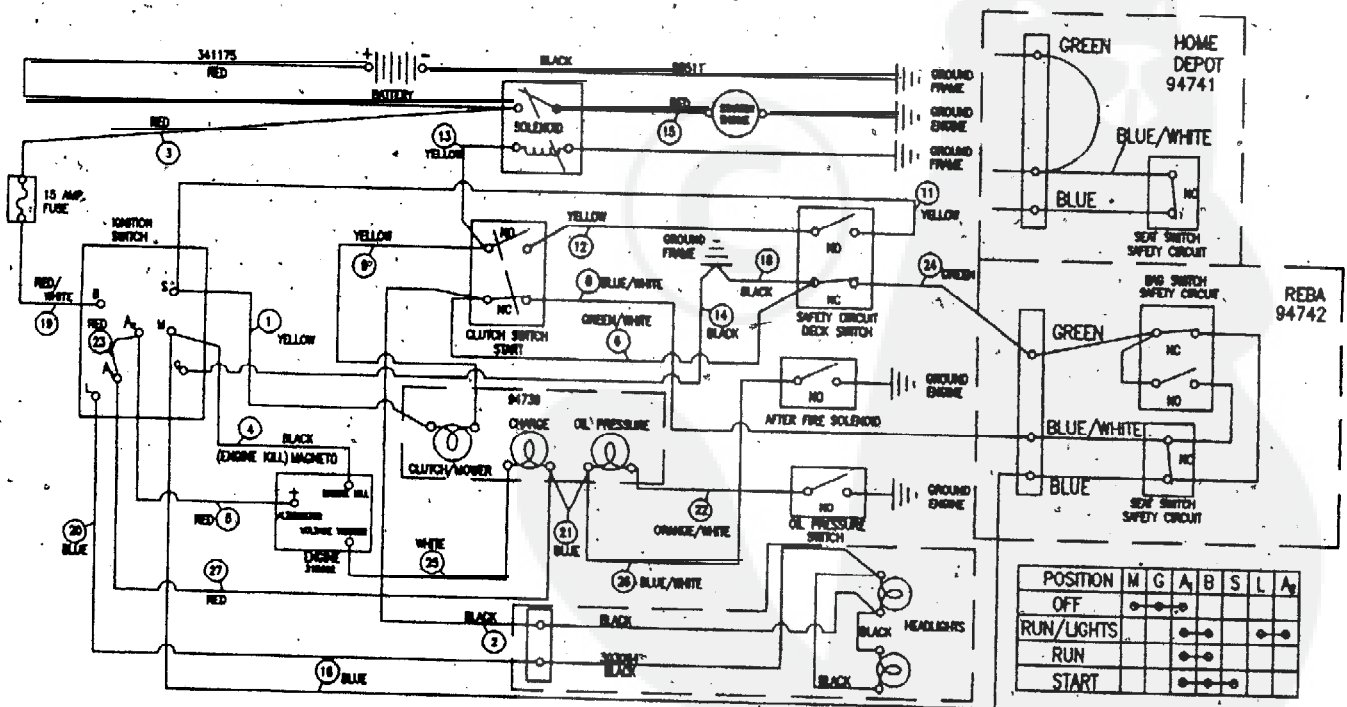
340977A

KEY NO.	PART NO.	DESCRIPTION	QTY
2	9430s	ASM.JACKSHAFT HOUSING-W/VENTS	2
3	92425	PULLEY, DECK REBA	2
4	91922	JACKSHAFT, 7.76LG-9/16-18TH	2
5	710117	WASHER,FLAT.625X1.00X.188	1
6	91903	SPACER.	2
8	710408	NUT, 9/16-18 CTLK (15X101)	2
9	94207	ADAPTER, DECK/BLADE	2
10	94208	BLADE, 40" RH REAR DISCHARGE.	1
11	9 4 2 0 9	BLADE, 40" LH REAR DISCHARGE	1
12	710118	WASHER, FLAT.625X1.75 17X166	2
13	710117	WASHER, FLAT .625X1.00X.188 .	2
14	710408,	NUT, 9/16 REGHEX	2
15	710265	SCREW, 3/8-16X1 .00 WAHHSPTAPPL	10
16	94288-853	COVER PULLEY	2
44	710231	BELT, V	1
45	710232	BELT, V- 40" DECK	1
47	92663	GAUGE WHEEL 4.94 DIA.	2
	94025	BOLT, SPSH 3/8-16X.63SH3-00LG	2
48	710115	WASHER,FLAT.518X.87X16 17X102	2
49	710140	NUT,3/8-16HWDFLK MACK 15X84	2



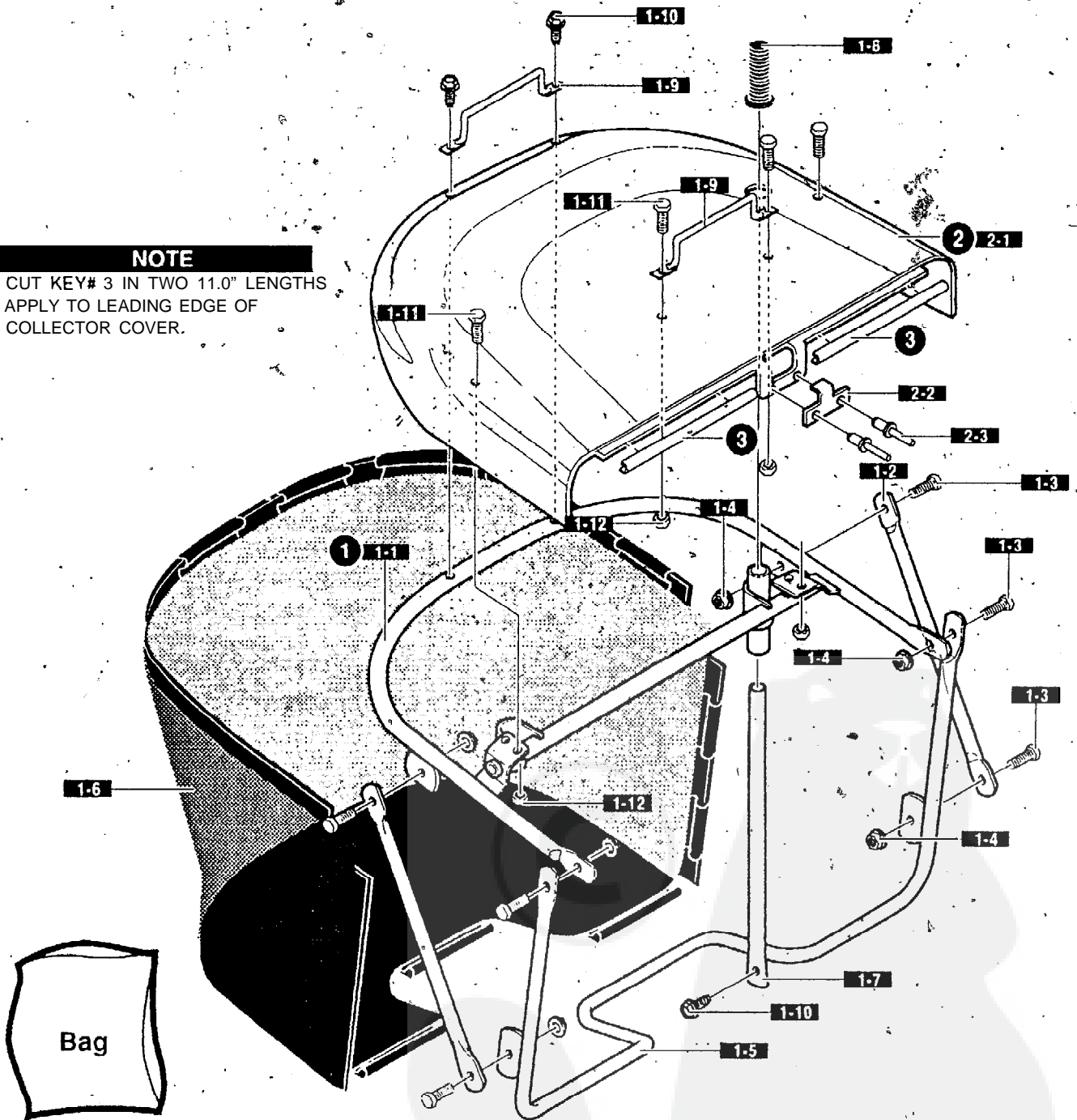
KEY NO.	PART NO.	DESCRIPTION	QTY
1	94759	HARNES, WIRE	1
2	94739	HARNES, WIRE DASH ASG,OIL,CHG1	1
3	94742	HARNES, REAR-BATTERY REBA	1
4	303064	ASSY,LIGHT WIRE-1/4 TURN	1
5	52572	BULB, HEADLAMP	2
6	57444	TIE, CABLE BLACK NYLON 5.62L	5
8	94762	SWITCH, IGNITION DELTA 7 TERM	1
9	327350	KEY,IGNITION GENERIC DELTA	1
10	320082	SWITCH,DOUBLE POLE NO/NC GRAY	1
11	57769	BULB, INDICATOR	2
12	94136	SWITCH LIMIT DELTA.	2
13	94613	SOLENOID	1
14	710133	SCREW,HHWATAP 114X.50	2
15	710203	NUT, 1/4-20 HEXNYL 15X116	2
16	95420	WIRE, GROUND, 20.0"	1
17	710133	SCREW,HHWATAP 1/4X.50	1
18	94159	SWITCH, SEAT	1
19	302257	BATTERY 12V-7 PLATE	1
20	710226	BOLT, 1/4-20X.63 CARR (2X82)	2
21	710225	NUT, WING 1/4-20 NC (14X79)	2
22	315602	REGULATOR, SEN VOLT.	1

SCHEMATIC WIRING

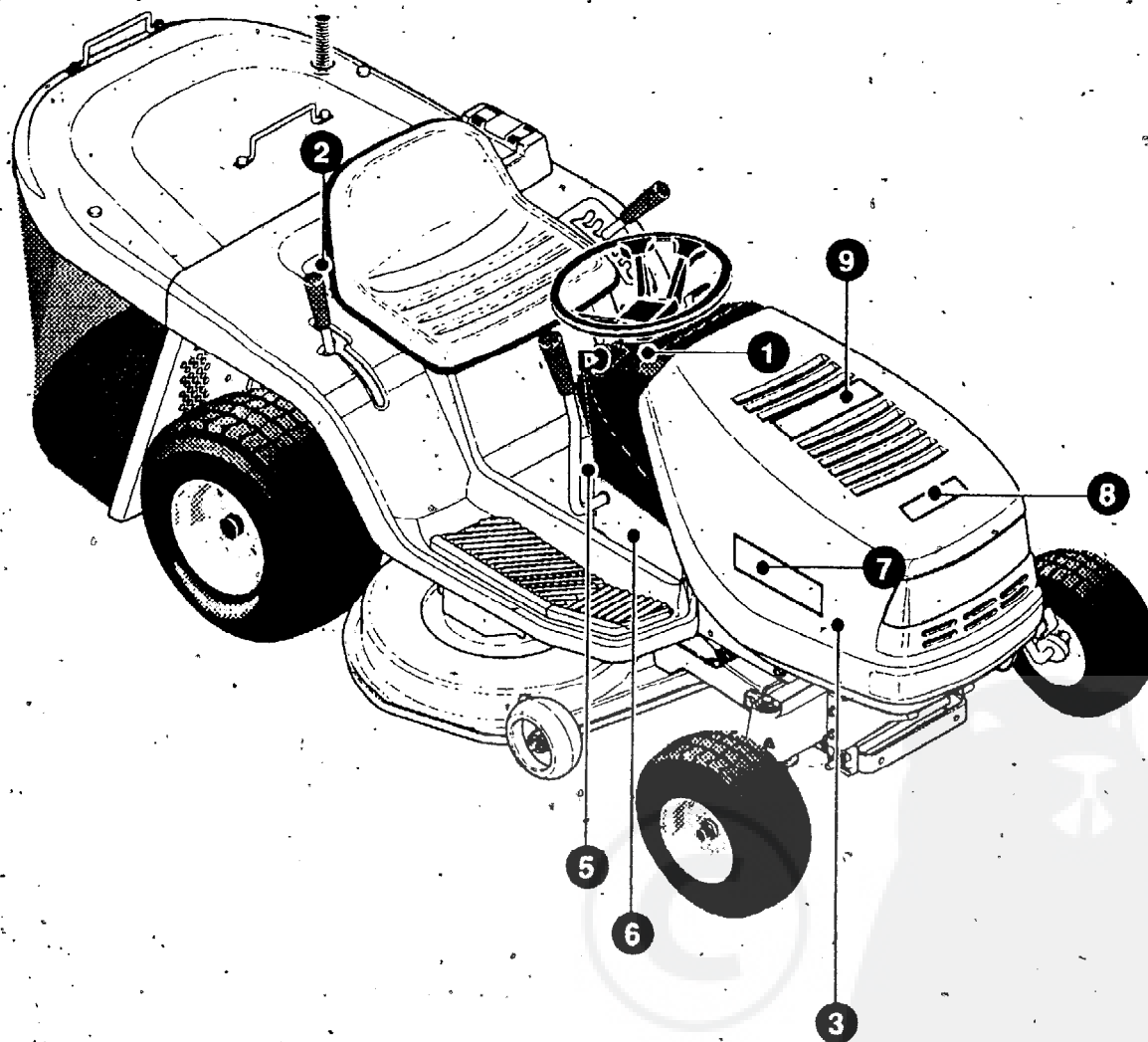


94759

**NOTE**  
 CUT KEY# 3 IN TWO 11.0" LENGTHS  
 APPLY TO LEADING EDGE OF  
 COLLECTOR COVER.



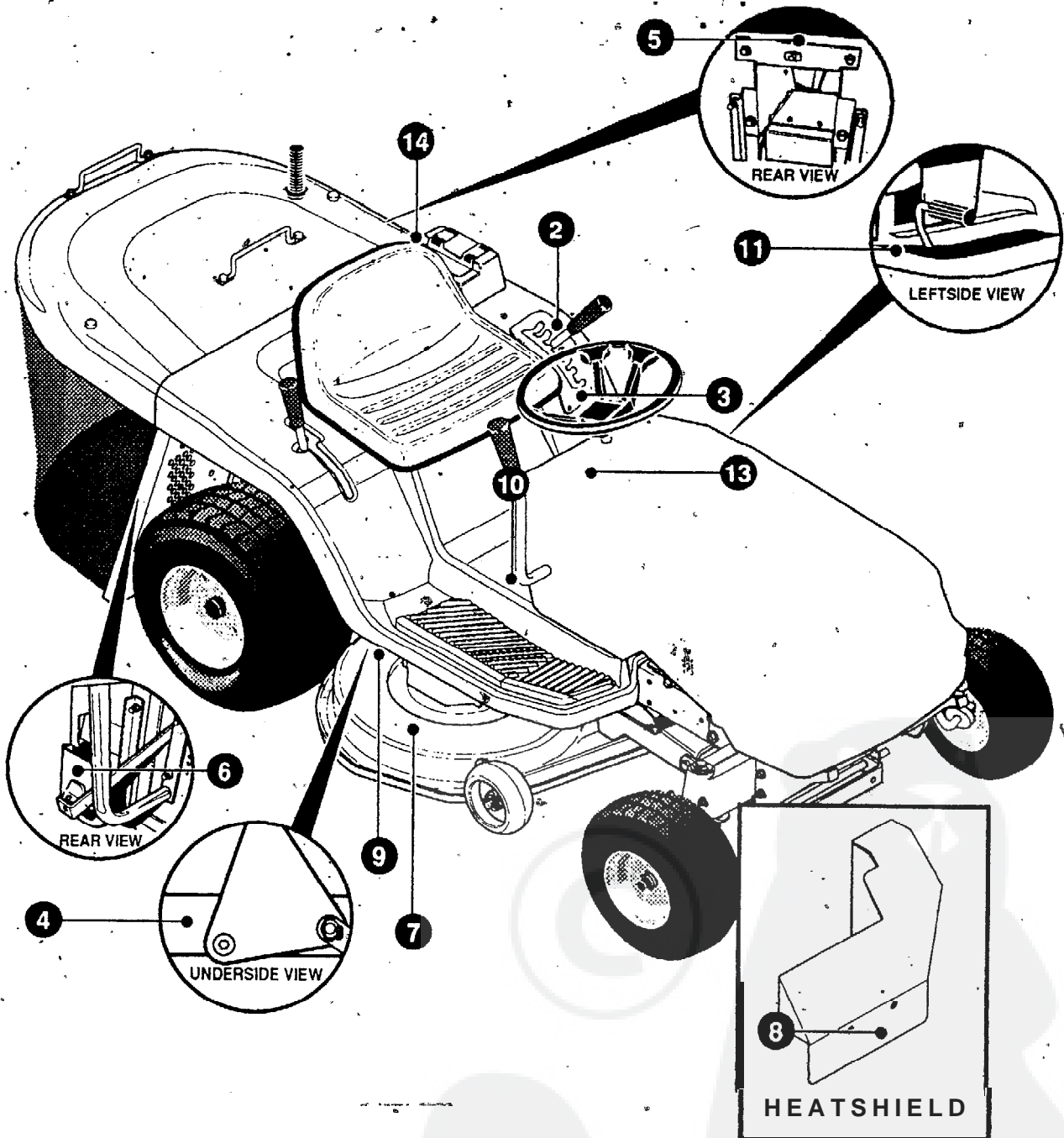
KEY PART NO.	PART NO.	DESCRIPTION	QTY
1	94560	ASM.GRASS COLLECTOR REBA	1
1-1	94849	ASSY., UPPER FRAME	1
1-2	94850	BRACE, FRAME COLLECTOR REBA	2
1-3	180020	SCREW, 1/4-20X.75	6
1-4	788029	NUT, 1/4-20 HEX NYLOCK #71035	6
1-5	94851	ASSY., FRONT FRAME REBA COLLECT	1
1-6	94852	BAG, REBA COLLECTOR	1
1-7	94853	HANDLE; DUMP REBA COLLECT.	1
1-8	94854	RUBBER GRIP 7/8" REBA	1
1-9	94855	HANDLE, REBA COLLECTOR	2
1-10	710266	SCREW, 1/4-24x.38 SLHWATAP	3
1-11	318139	SCREW, 1/4-20X.63 PHPPNHD	4
1-12	780029	1/4-20 HEX NYLOCK NUT #71035	4
2	94908-860	TOP, COLLECTOR ASSY	1
2-1	94206	TOP COVER, COLLECTOR REBA	1
2-2	94244	BRACKET, SWITCH	1
2-3		RIVET (NOT A SERVICEABLE PART	
3	55023	TRIM, 77.5"	22 IN.

**KEY PART**

NO.	NO.	DESCRIPTION	QTY
1	711018	DECAL, DASH MC W/OP RED	1
2		NOT A SERVICEABLE PART	
3	711206	DECAL, 16/102 AUTOMATIC DRIVE	2
5	710691	DECAL, PARK BRAKE (P)	1
7	305603	PAD, FOAM HOOD 18X6	2
8	307276	PAD, FOAM HOOD 15X7	1
9	307277	PAD, FOAM HOOD 12X5	1

341870A





**KEY PART NO. NO.**

- 3 710683 710638
- 4
- 5 710523  
338541
- 6 338542
- 7 402700
- 8 338543
- 9 710684
- 10 710534
- 11 402702
- 13 710270
- 14 710771

**DESCRIPTION**

- DECAL, HEIGHT ADJUST 1-6
- DECAL, DECK LEVEL REBA/NLT EXP
- DECAL, PINCH POINTS WARNING
- DECAL, BAGGER "CE" M344X5939
- DECAL, DRAWBAR WARN M#44X6138
- DECAL, CAUTION DECK LH
- DECAL, HOT SURF WARN M#44X5936
- DECAL, DECK BELT ROUTE REBA
- DECAL, CONS CAUT. M#44X6815
- DECAL, BRAKE/CLUTCH PICTOGRAM
- DECAL, AUTODRIVE INSTR DASH RT
- DECAL, REBA HYDRO DUMP VALVE

**QTY**

- 1
- 1
- 1
- 1
- 1
- 2
- 1
- 1
- 1
- 1
- 1
- 1