

REPAIR PARTS MANUAL

36" - 11 H.P. RIDING MOWER

MODEL A3560-170

ONE YEAR LIMITED WARRANTY

For one (1) year from date of purchase by the first consumer for residential use (thirty (30) days of normal use), NOMA Outdoor Products Incorporated warrants that it will replace free of charge, including labor, any original part of any NOMA Outdoor Products Incorporated product found to be defective by an authorized Service Dealer or the factory, except the battery which is warranted for ninety (90) days from date of purchase.

This warranty does not cover engine, iron castings, bearings, or differential gears unless are covered by their manufacturer's own warranty. This warranty does not cover parts that have failed due to normal wear or parts that have failed subject to misuse or abuse. Transportation of the unit or part and from an authorized Service Dealer or the factory is the responsibility of the owner.

As per by step explanation as to what procedure should be followed for this Warranty is:

1. If a unit becomes defective, contact the store where the unit was purchased for the name and address of the authorized Service Dealer nearest to you.

2. If you cannot locate an authorized Service Dealer, write Service Department of NOMA Outdoor Products Incorporated for the name and address of the authorized Service Dealer nearest to you. Call the Service Department at 1-800-824-6990.

3. Return the defective product along with proof of purchase to such authorized dealer or send replacement of any defective part to be covered by this warranty.

There is no other express warranty. Implied warranties, including those of merchantability and fitness for a particular purpose are limited to one (1) year from date of purchase. Liability for incidental or consequential damages are excluded.

Some states do not allow limitations on how long an implied warranty lasts, so the above exclusion may not apply to you. Some states do not allow the exclusion of incidental or consequential damages, so the above exclusion may not apply to you. This warranty gives you specific legal rights, and you may have other rights which vary from state to state.

NOMA Outdoor Products Incorporated Cajal 8000 Jackson, TN 38303-8000

UNIT PARTS AND SERVICE

This manual contains instructions for safety, assembly and maintenance. Read this manual carefully to make sure you will know proper assembly, use and care of your unit. Also fill in and mail the information on the unit. For service other than covered in this manual, contact an authorized service center. A nationwide parts and service organization has been established to provide locally available parts and a list of authorized parts distributors has been included in this manual. When ordering repair parts, always give the following information: 1. The Part Name; 2. The Part Number; 3. The Quantity desired; 4. The Part Number of the unit. The model number will be found on a plate attached to the unit.



Look for this symbol. It means - ATTENTION! BECOME ALERT! A HAZARDOUS SITUATION MAY EXIST FOR THE OPERATOR, BYSTANDER, PROPERTY OR EQUIPMENT.

NOMA Outdoor Products Incorporated
Cajal 8000
Jackson, TN 38303-8000

Part No. 310890



OPERATIONAL PRECAUTIONS

THESE INSTRUCTIONS ARE FOR YOUR PROTECTION. PLEASE READ THEM CAREFULLY

1. Know the controls and how to stop quickly. READ THIS OPERATOR'S MANUAL and instructions furnished with attachments.
2. Wear safety glasses or eye shields when assembling or operating riding mower.
3. Do not allow children to operate the machine. Do not allow adults to operate it without proper instruction.
4. Do not carry passengers. Do not mow when children and others are around. Disengage power to blade(s) or attachment(s) and stop the engine while others are in the vicinity of the mower.
5. Battery fluid (electrolyte) is an ACID and is extremely dangerous. Do not smoke while servicing the battery. Do not service the battery near a open flame or spark.
6. Handle gasoline with care, it is highly flammable.
 - A. Use approved gasoline container.
 - B. Never remove the fuel cap of, or add gasoline to, a running or hot engine, or an engine that has not been allowed to cool for several minutes after running. Never fill the tank indoors and always clean up spilled fuel immediately.
 - C. Do not smoke while filling fuel tank.
 - D. Do not run the engine indoors. Open doors if engine must be run in garage. Exhaust fumes contain CARBON MONOXIDE, an ODORLESS and DEADLY GAS.
7. Check fuel supply before each use allowing space for expansion as the heat of the engine and/or sun can cause gasoline to expand.
8. Do not operate mower when barefooted. Always wear substantial footwear, preferably steel-toed shoes. Do not wear loose fitting clothing that could get caught in moving parts.
9. Clear the work area of objects (wire, rocks, etc.) which might be picked up and thrown. Check all controls for proper function.
10. Disengage all attachment clutches, shift to neutral, and set parking brake before attempting to start the engine (motor). When starting engine equipped with a pull starter, stand firm and make sure your feet are well away from the blade(s).
11. Disengage power to blade(s) or other attachment(s) and stop the engine (motor) before leaving the operator's position. Always dismount from the left side.
12. Disengage power to blade(s) or other attachment(s) and stop the engine (motor) before making any repairs or adjustments.
13. Disengage power to blade(s) or other attachment(s) when transporting or not in use.
14. Take all possible precautions when leaving the vehicle unattended, such as disengaging power to blade(s) or attachment(s), lower the attachment(s), setting the parking brake, stopping the engine (motor), and removing the key.
15. Do not stop or start suddenly when going uphill or downhill. Mow up and down the face of steep slopes, never across the face.
16. Reduce speed and exercise extreme caution on slopes and in sharp turns to prevent tipping or loss of control. Be especially cautious when changing direction on slopes.
17. Stay alert for holes, rocks, and roots in turf and other hidden hazards. Keep away from them. Never operate your riding mower on wet or slippery grass or at a speed which could cause a skid. Exercise care when mowing around a fixed object to prevent the blade(s) from striking it. Never do run over any foreign object.
18. Always disengage blade control lever before attempting to remove the mower from a hole or obstruction.
19. Use care when pulling loads or using equipment.
 - A. Use only approved drawbar hitch point.
 - B. Limit loads to those that you can safely handle.
 - C. Do not turn sharply. Use care when backing up.
 - D. Use counterweight(s), wheel weight(s), or chains when suggested in attachment instructions.
20. Watch for traffic when crossing or near road.
21. When using attachment(s), never direct discharge material toward bystanders nor allow anyone to be in the vehicle while in operation.
22. Keep the vehicle and attachments in good condition, and keep safety devices in place and working condition.
23. Keep all nuts, bolts, and screws tight to be sure equipment is in safe working condition.
24. Never store the equipment with gasoline in the tank inside a building where fumes may reach flame or spark. Allow the engine to cool before storing in any enclosure.
25. To reduce fire hazard, keep the engine free of leaves or excessive grass.
26. The vehicle and attachments should be stopped and inspected for damage after striking a foreign object and the damage should be repaired before re-starting and operating the equipment.
27. Do not change the engine governor settings on speed engine.
28. When using the vehicle with mower, proceed as follows:
 - A. Mow only in daylight or in good artificial light.
 - B. Never make a cutting height adjustment while the engine (motor) is running if the operator must dismount to do so.
 - C. Shut the engine (motor) off when removing grass catcher or unclogging chute.
 - D. Check the blade mounting bolts for proper torque at frequent intervals.
29. Under normal usage, the grass catcher bag is subject to deterioration and wear. Check it frequently for deterioration and wear and replace worn bags. Check that replacement bags conform with the original manufacturer's recommendations or specifications.
30. Disengage power to mower before backing up. Do not mow in reverse unless absolutely necessary, then only after careful observation of the area behind the mower.

OWNER'S INFORMATION

Record the following information about your unit so that you will be able to provide it in case of loss

MODEL NUMBER: - (Enter complete 9 digit number from model plate or

PURCHASE DATE: / / CODE NO.: SERIAL NO.:

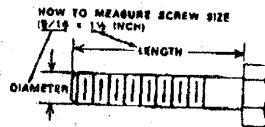
DEALER'S NAME AND ADDRESS:

CITY: STATE: TELEPHONE:

CONTENTS OF SHIPPING CARTON

- 1 - 36 inch Riding Mower
- 1 - Engine Manual
- 1 - Operator's Manual
- 1 - Repair Parts Manual
- 1 - Steering Wheel (with roll pin partially installed)
- 1 - Seat
- 1 - Chute Deflector
- 1 - Battery
- 1 - Bag of Assembly Parts Containing:
 - 1 - Trough (oil drain)
 - 1 - Tension Spring (chute deflector)
 - 1 - Pivot Rod (chute deflector)
 - 1 - Battery Hold-Down Bracket
 - 1 - Battery Hold-Down Rods
- 1 - Bag of Battery Hold-Down Parts Containing:
 - 2 - 9/32 inch Flatwashers
 - 2 - 1/4 inch Split Lockwashers
 - 2 - 1/4 inch Hex Nuts
- 1 - Bag of Battery Cable Installation Parts Containing:
 - 2 - 1/4 x 5/8 inch Hex Head Screws
 - 2 - 1/4 inch Keeps, Nuts (star washer attached)
- 1 - Bag of Seat Mounting Parts Containing:
 - 4 - 5/16 x 3/4 inch Hex Head Screws
 - 4 - 5/16 inch Split Lockwashers
 - 4 - 11/32 inch Flatwashers

TOOLS REQUIRED FOR ASSEMBLY



- 2 - 7/16 inch Wrenches (or adjustable wrenches)
- 1 - 1/2 inch Wrench (or adjustable wrench)
- 1 - Hammer (plastic or rawhide preferred)



DANGER

This riding mower can be dangerous if used.

Read Owner's Manual thoroughly before riding mower.

Always wear safety glasses or eye shield when assembling or operating riding mower.

DO NOT carry passengers at any time.

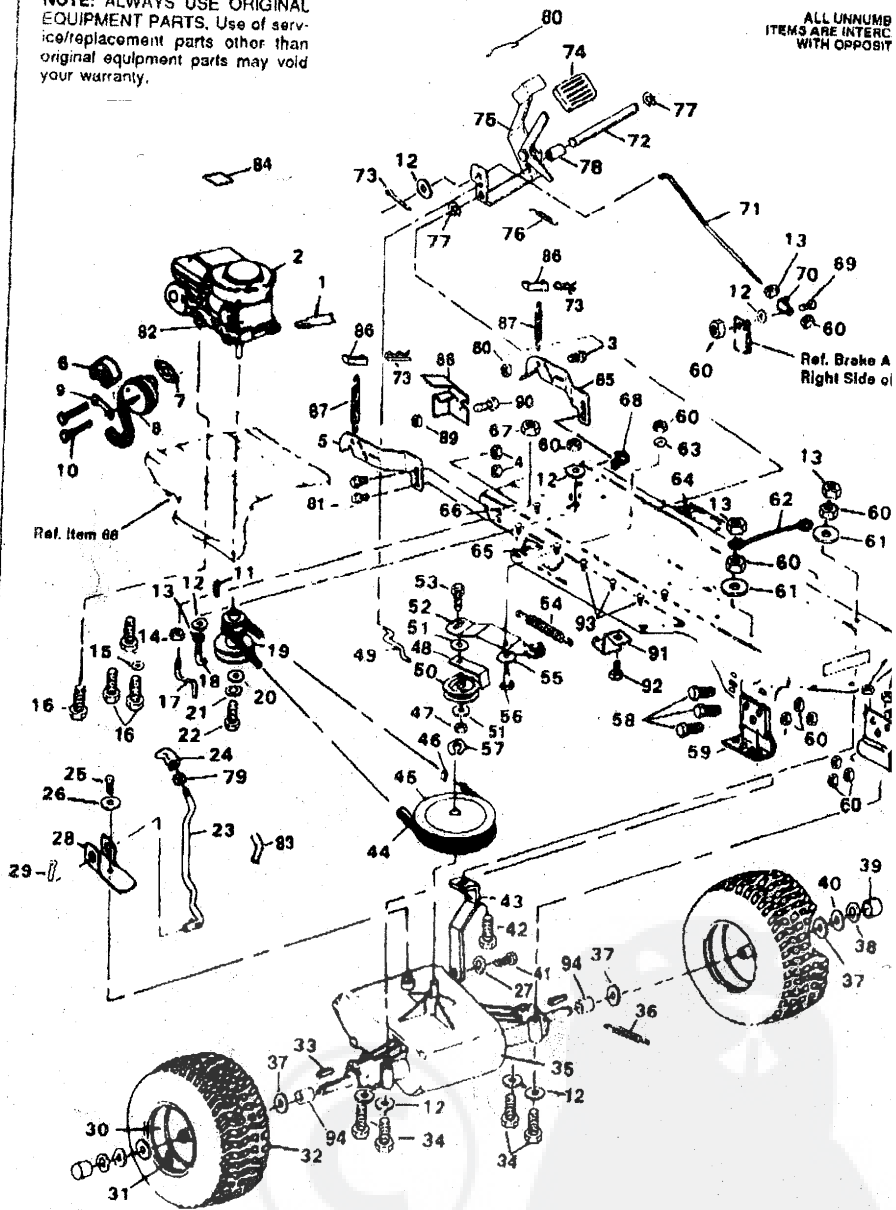
Keep hands, feet, hair and loose clothing clear of discharge area, underside of mower moving parts while engine is running.

DO NOT allow children or young teenagers to be near riding mower while it is on.

36" RIDING MOWER MODEL A3560-170

NOTE: ALWAYS USE ORIGINAL EQUIPMENT PARTS. Use of service/replacement parts other than original equipment parts may void your warranty.

ALL UNNUMB
ITEMS ARE INTERC
WITH OPPOSIT



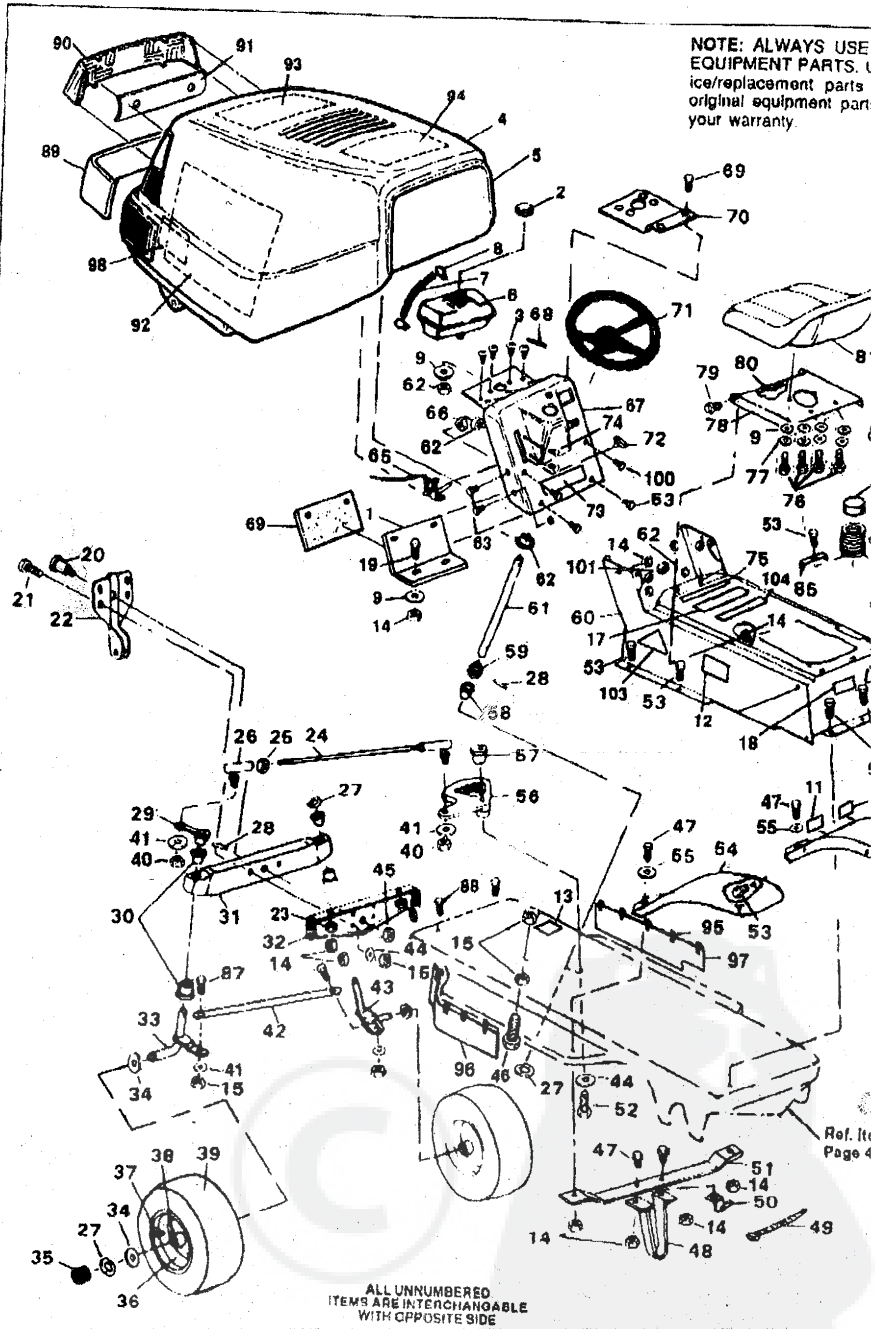
36" RIDING MOWER MODEL A3560-170

ALWAYS GIVE THE FOLLOWING INFORMATION WHEN ORDERING REPAIR PARTS:
 1. The PART NUMBER, 2. The PART NAME, 3. QUANTITY DESIRED; 4. The MODEL NUMBER (As shown
 SEND PART ORDERS AS PER INSTRUCTIONS ON THE FRONT PAGE.
 DO NOT USE KEY NUMBERS WHEN ORDERING REPAIR PARTS, ALWAYS USE PART NAME
 All replacement parts will be supplied in current production colors or in a neutral color.
 A handling fee is applicable to small parts orders.
 YOUR UNIT IS RIGHT HAND (RH) OR LEFT HAND(LH) AS YOUR STAND BEHIND IT.

Key No.	Part No.	Description	Key No.	Part No.	Description
1	54873	Trough, Oil Drain	51	274617	* Washer, Flat 13/32 In
2	Engine	See Footnote Below	52	1308	Idler Arm Bracket, Trc
3	56676	Shoulder Bolt	53	45892	Carrage Bolt, 3/8-16 x
4	55273	Nut, 5/16-18 Thd.	54	49276	Spring, Main Drive
5	9779	Grille Bracket, L. H.	55	4107	Washer, Flat 5/8 In.
6	54767	Heat Shield, Muffler	56	41890	Shoulder Bolt
7	48708	Gasket, Muffler	57	22053	Retaining Ring
8	305387	Muffler	58	120228	* Screw, Hex 5/16-18 x
9	Engine Part		59	7707	Bracket, Axle
10	173063	* Screw, Hex 5/16-18 X 3-1/2 In.	60	1498	Locknut, Hex 5/16-18
11	33200	Key, Engine Pulley	61	138485	Washer, External Lock
12	120393	* Washer, Flat 11/32 In.	62	55511	Ground Wire
13	271184	Nut, Keps 5/16-18 Thd.	63	46602	Washer, Flat 21/64 In.
14	271190	Nut, Keps 3/8-16 Thd.	64	310004	Foot Pad, R.H.
15	138489	Washer, Pilot	65	310003	Foot Pad, L.H.
16	50947	Screw, Hex Wa Tap, 3/8-16 x 1-1/4 In.	66	311116	Main Frame
17	50653	Belt Guide, Blade Drive	67	41529	Locknut, 3/8-18 Thd.
18	49896	Belt Guide, Drive	68	54888	Retainer, Wire
19	304330	Pulley Engine	69	20507	Shoulder Bolt
20	56431	Washer, Pilot	70	54723	Bracket, Brake Rod
21	120383	* Lockwasher, Split 7/16 In.	71	310189	Rod, Brake
22	123587	Screw, Hex 7/16-20 x 4-1/4 In.	72	302600	Shaft, Brake/Clutch Pe
23	302283	Shift Lever	73	121222	* Pin, Cotter, 3/32 x 3/4
24	304438	Knob, Gear Shift	74	53979	Rubber Pad, Brake Pe
25	56255	Screw, Nylock 1/4-28 x 3/4 In.	75	302603	Brake Pedal Assembly
26	57157	Washer	76	50562	Spring, Clutch Pedal
27	120638	Lockwasher, 5/16 x 5/8 x 1/8 In.	77	20864	Retaining Ring
28	57480	Shift Bracket	78	302601	Spacer, Sleeve
29	137185	* Pin, Cotter 1/8 x 1 In.	79	120238	Jam Nut, Hex, 1/2-13 T
30	41105	Wheel	80	55024	Retainer
31	24167	Valve Stem	81	56030	Screw, Wide Flange 5/
32	41106	Tire	82	302967	Engine Speed Reducer
33	39628	Key, Square	83	302445	Tube, Clear Plastic
34	180112	* Screw, Hex 5/16-18 x 2-1/4 In.	84	67667	Decal, Oil
35	Transaxle	Foot 4360-3 Speed	85	9778	Grill Bracket, R.H.
36	35410	Spring, Brake Return	86	12582	Anchor, Spring
37	842	Flatwasher, 3/4 In.	87	304784	Spring, Hood Latch
38	38825	"E" Ring	88	308544	Heat Shield
39	40394	Hub Cap	89	120380	Washer, Split
40	42815	Washer, Flat 3/4 In.	90	180021	Screw, Taplite, 1/4-20 x
41	35498	Screw, Hex Wa Tap, 5/16-18 x 3/4 In.	91	302810	Bracket, Switch Mount
42	122017	* Screw, Hex 5/16-18 x 1 In.	92	995346	Screw, Taplite 1/4-20 x
43	309770	Bracket, Stabilizer	93	309235	Fastener, Ratchet
44	54758	V-Belt	94	57479	Spacer
45	302745	Pulley, Transaxle	95	12563	Operator's Manual, Eng
46	3021	Key, Woodruff #608			(Not illustrated)
47	1499	Locknut, Hex 3/8-16 Thd.	96	310890	Repair Parts Manual, Er
48	39659	Belt Retainer			(Not illustrated)
49	43980	Rod, Clutch			
50	303031	Pulley, Idler			

(*) Standard Hardware Items - May Be Purchased Locally
 (-) Contact Engine Manufacturer's authorized service dealer (See Engine Manual) for parts and warranty.
 (*) Contact Tecumseh/Peerless authorized service dealer for parts and warranty

36" RIDING MOWER MODEL A3560-170

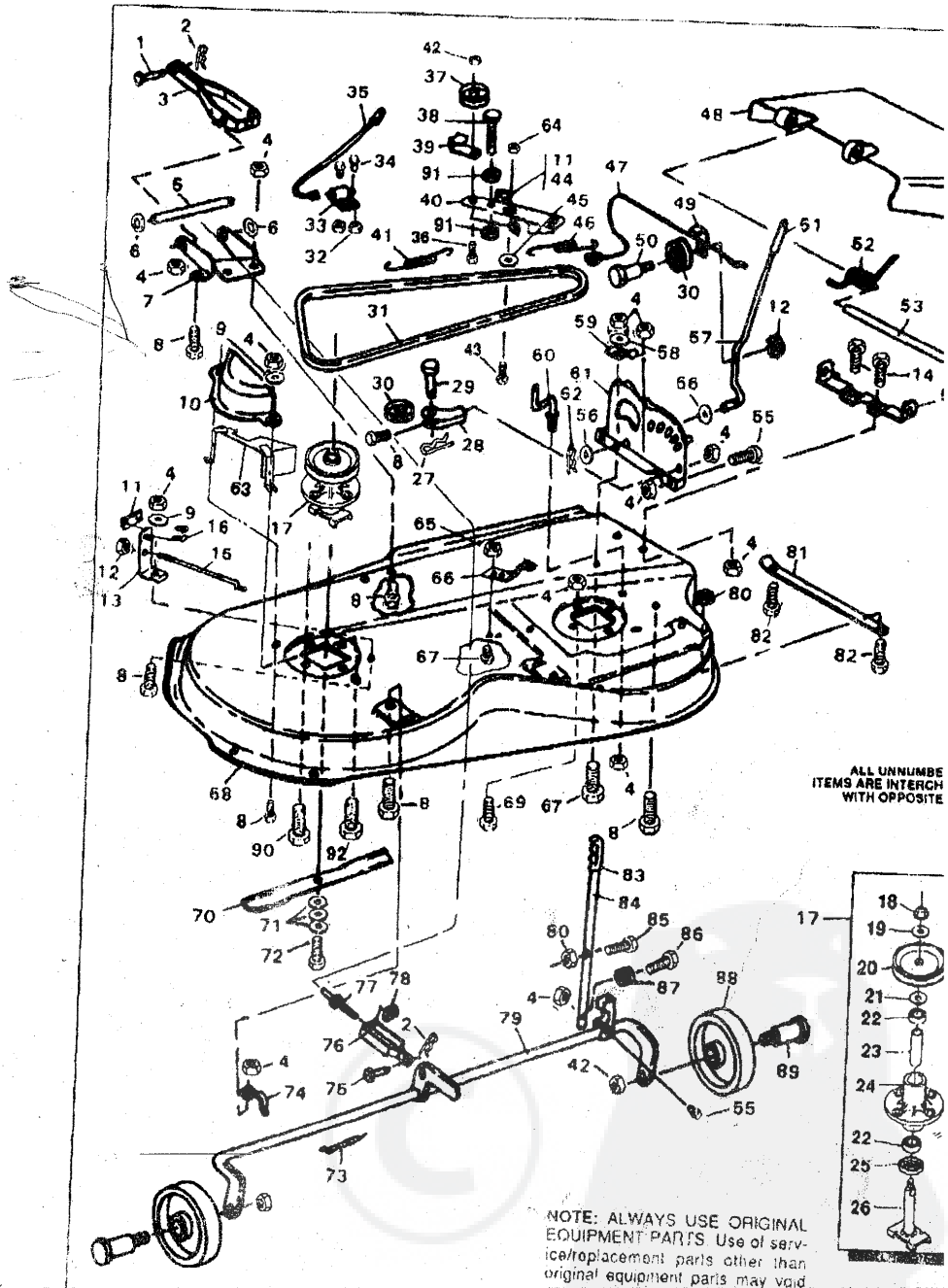


36" RIDING MOWER MODEL A3560-170

Key No.	Part No.	Description	Key No.	Part No.	Description
1	8261	Console, Bulkhead	52	39573	Screw, Lock Hex 3
2	46704	Gas Cap	53	995346	Screw, Taplite 1/4-
3	49050	Screw, Plastite, 1/4-10 x 3/4 In.	54	3606	Fender
4	12506	Hood	55	448363	Washer, Flat 5/16
5	55021	Edging, Hood	56	304245	Sector Gear
6	302579	Gas Tank	57	34911	Shoulder Bolt, Sect
7	47452	Gas Line, 12 In.	58		Bearing, Steering
8	41008	Clamp, Gas Line	59		Pinion Gear
9	120393	Washer, Flat 11/32 In.	60		Console
10	68900	Decal, Deck Engage	61		Shaft, Steering
11	68901	Decal, Height Adjustment	62		Locknut, Hex 1/4-20
12	68902	Decal, Warning	63		Screw, Taplite 1/4-
13	68903	Decal, Clutch/Brake	64		Retaining Ring
14	1498	Locknut, Hex 3/16-18 Thd.	65	39521	Lever, Throttle Con
15	1499	Locknut, 3/8-16 Thd.	66	50352	Locknut, Wide Flang
16	307047	Decal, 3-Speed	67	12508	Dash Assembly
17	89524	Decal, Console	68	456378	Spring Pin, 1/4 x 2
18	305770	Decal, Caution	69	55536	Pad, Foam Console
19	120228	Screw, Hex 5/16-18 x 5/8 In.	70	57386	Screw, Drillite 10-1
20	50720	Shoulder Bolt	71	301251	Steering Wheel
21	122201	Screw, Hex 3/8-16 x 2-3/4 In.	72	50607	Knob, Throttle Cont
22	9140	Bracket, Deck Hangar	73	307412	Decal, Lower Dash
23	55273	Locknut, Wide Flange 5/16-18	74	274672	Screw, Hex 1/4-20
24	56190	Drag Link	75	69525	Decal, Caution
25	124925	Nut, Hex Jam 3/8-24 Thd.	76	122007	Screw, Hex 5/16-18
26	21275	Bail Joint	77	120638	Lockwasher, Split 5.
27	36625	"E" Ring	78	304761	Seat Plate
28	454565	Roll Pin	79	20507	Shoulder Bolt
29		Arm, Steering	80	41482	Press Clip
30		Bearing, Flanged	81	307681	Seat
31		Front Axle	82	57547	Switch, Seat
32		Bracket, Front Axle Support	83	180505	Screw, 1/4-20 x 3/8
33	302667	Spindle, Left	84	56220	Spring Seat
34	642	Washer, Flat 3/4 In.	85		Clamp, Seat Spring
35	40394	Hub Cap	86		Cover, Console, Rec
36	39829	Wheel	87	122116	Screw, Hex 3/8-16 x
37	24167	Valve Stem	88	56030	Screw, Wide Flange
38	39379	Bearing	89	305737	Bumper Assembly
39	39379	Tire	90	302670	Lens, Headlamp
40	120393	Nut, Hex 3/8-24 Thd.	91	308492	Decal, Reflector
41	320382	Lockwasher, Split, 3/8 In.	92	305803	Foam, Hood
42	302691	Tie Rod	93	307276	Pad, Foam Hood
43	302668	Spindle, Right	94	307277	Pad, Foam Hood
44	2483	Spring Washer	95	306981	U-Clip Fastner
45	274654	Locknut, Hex, 1/4-20 Thd.	96	305426	Belt Guard, L. H.
46	49930	Screw, Hex 3/8-16 x 7-1/2 In.	97	305427	Belt Guard, R. H.
47	122017	Screw, Hex Hd, 5/16-18 x 1 In.	98	301452	Foil, Heat Reflector
48	301258	Bracket, Deck Guide	99	302099	Cap, Spring
49	57444	Tie Wire	100	35291	Screw, 10-24 x 1/2 In
50	57569	Retainer, Wire	101	271166	Nut, Keps #10-24
51	43964	Bracket, Deck Guide Support			

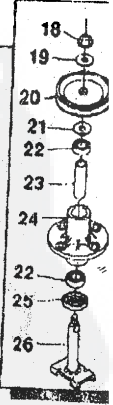
(*) Standard Hardware Items - May Be Purchased Locally

36" RIDING MOWER MODEL A3560-170



ALL UNNUMBERED ITEMS ARE INTERCHANGIBLE WITH OPPOSITE

NOTE: ALWAYS USE ORIGINAL EQUIPMENT PARTS. Use of service/replacement parts other than original equipment parts may void



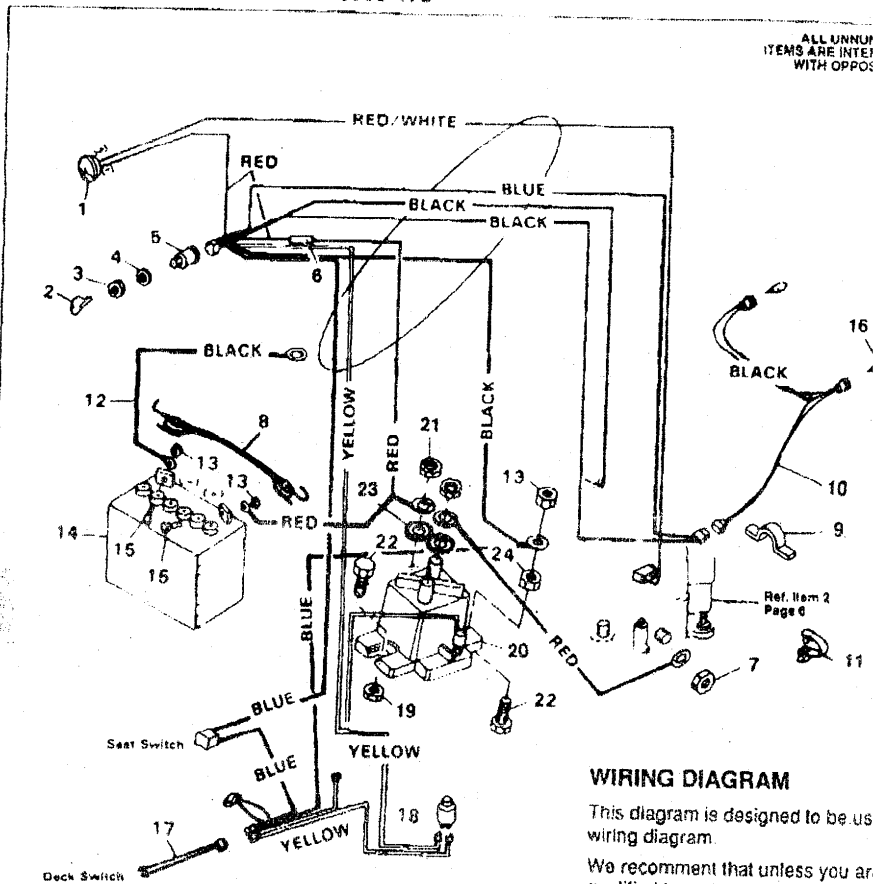
36" RIDING MOWER MODEL A3560-170

Key No.	Part No.	Description	Key No.	Part No.	Description
1	47816	Pin, Clevis	47	57326	Clutch Cable
2	56180	Pin, Hair	48	57818	Chute Guard
3	57340	Pivot Bracket	49	1288	Retainer, Cable
4	1498	Locknut, 5/16-18 Thd	50	57322	Shoulder Bolt
5	57196	Pin, Pivot	51	46478	Grip, Clutch Lever
6	20864	"E" Ring	52	55767	Spring, Discharge
7	57327	Lift Support Plate	53	57317	Rod, Pivot
8	120228	Screw, Hex 5/16-18 x 5/8 In.	54	57360	Bracket, Pivot
9	120393	Flatwasher, 11/32 In.	55	122040	Screw, Hex 5/16-18
10	302833	Belt Guard, L.H. Pulley	56	120398	Washer, Flat
11	308973	Brake Pad	57	57329	Clutch Lever
12	1502	Locknut, 1/4-20 Thd.	58	120388	Washer, Flat 5/16
13	303247	Blade Brake Assy, (incl. Nos. 11 & 18)	59	57321	Spring
14	120834	Screw, Hex 5/16-18 x 1/2 In.	60	57318	Retainer, Belt
15	300315	Rod, Brake Release	61	57337	Quadrant
16	135624	Rivet, Brake Pad	62	8260	Pin, Hair
17	56424	Quill Assy, (incl. Nos. 18-25)	63	9646	Belt Guard
18	1202	Locknut, Flange 7/16-20 Thd.	64	45171	Locknut, Wide Flan
19	57325	Special Washer	65	44108	Nut, Hex Wide Flan
20	56390	Pulley	66	57319	Bracket, Idler
21	51449	Spacer, Quill	67	57377	Screw, Hex Wide F
22	49562	Bearing	68	305467	Mower Deck
23	50818	Spacer, Tube	69	57345	Screw, Hex 5/16-18
24	55547	Quill	70		Blade
25	50616	Dust Shield	71		Formed Washer
26	56425	Saddle & Shaft Assy.	72		Screw, Hex 3/0-24
27	121222	Cotter Pin, 3/32 x 3/4 In.	73	57343	Wire Tie
28	49320	Support, Cable Pulley	74	51985	Support, Pivot Tube
29	49332	Pin, Clevis 3/8 x 1 In.	75	39522	Pin, Clevis
30	39298	Pulley, Nylon	76	9405	Clevis, Lift Cable
31	302289	V-Belt	77	300341	Lift, Cable
32	271184	Nut, Keps #10-24 Thd	78	120372	Nut, Square 1/4-20
33	57328	Switch	79	306881	Pivot Tube Assembl
34	57329	Screw, Part #10-24 x 5/8 In.	80	271184	Nut, Keps 5/16-18 T
35	57328	Wire Assembly	81	57314	Skid Bar
36	57325	Carriage Bolt, 3/8-16 x 2 In.	82	126216	Carriage Bolt, 5/16-
37	303030	Pulley, Idler	83	56924	Grip, Height Adjust
38	121954	Screw, Hex 1/4-20 x 2 In.	84	300188	Height Adjust Lever
39	1346	Retainer, Belt	85	57324	Screw, Latch
40	300491	Idler Arm Assy, (incl. Nos. 11 & 44)	86	995338	Screw, Taprite 1/4-2
41	35410	Spring	87	57319	Spring
42	1499	Locknut, 3/8-16 Thd.	88	52584	Wheel, Deck
43	300180	Shoulder Bolt	89	23783	Wheel Axle
44	41601	Rivet, Brake Pad	90	50624	Screw, Hex Wa Tap
45	396416	Flatwasher, 3/8 In.	91	271184	Nut, Keps 1/4-20 Th
46	300683	Spring, Clutch	92	122037	Screw, Hex 5/16-18

(*) Standard Hardware Items - May Be Purchased Locally

36" RIDING MOWER MODEL A3560-170

ALL UNNU
ITEMS ARE INTE
WITH OPPOS



WIRING DIAGRAM

This diagram is designed to be us wiring diagram.

We recommend that unless you ar qualified to make repairs on the el system on this unit, you take it to a competent repairman for such wor adjustments. If the wiring is incorre hooked up, the engine's electrical can be damaged.

NOTE: ALWAYS USE ORIGINAL EQUIPMENT PARTS.
Use of service/replacement parts other than original equip- ment parts may void your warranty.

Key No.	Part No.	Description
1	302031	Fuse
2	300628	Key, Ignition
3	48140	Locknut (Switch Part)
4	138857	Lockwasher (Switch Part)
5	300687	Switch, Ignition & Lights
6	57842	Wire Harness Assembly
7		Engine Part
8	309852	Strap, Rubber
9	41482	Wire Clip, Press
10	303064	Lead Wire, Headlight
11	54888	Retainer, Wire
12	55611	Ground Wire

Key No.	Part No.	Description
13	271172	Nut, Keps 1/4-20 Thd.
14	302257	Battery
15	120854	Screw, Hex 1/4-20 x 5/8 In.
16	52572	Bulb, Headlight
17	57588	Wire Assenbly, Deck Switch
18	300220	Switch, Lockout
19	1502	Locknut, Hex 1/4-20 Thd.
20	53716	Solenoid
21	120368	Locknut, Hex 5/16-24 Thd.
22	187745	Screw, Hex 1/4-20 x 3/4 In.
23	138485	Washer, Shakeproof 5/16 In.

(*) Standard Hardware Items

ACCESSORIES

Contact the dealer where your tractor was purchased for the available accessories. If you are unable to contact the dealer, write to the address on the front cover of this manual.

Rear Engine Rider

Model	Description
5708-16	Bagger - Fits 32" Side Discharge
5708-17	Bagger - Fits 36" Side Discharge
5709-02	Front Weight Box - holds 35 lbs
5648-16	Lawn Sweeper w/dump Release

Lawn Tractor

Model	Description
5708-22	Bagger - Fits 30" Side Discharge
5708-13	Bagger - Fits 36", 38", 39" & 45" Side Discharge
5705-04	36" Two-Stage Snowblower - Fits 36", 38", 39", & 45" Side Discharge
5661-06	42" Snowblade - Fits 36", 39", 39", & 45"
5592-00	Tire Chains - 18" x 6 5/8"
5585-00	Tire Chains - 18" x 9 5/8" & 20" x 8"
5672-01	Wheel Weights - Front - 1 pr. w/mtg. hdw. - Fits 15" tires
5673-02	Wheel Weights - Rear - 1 pr. w/mtg. hdw. - Fits 18" & 20" tires
5709-03	Front Weights - Fits 30" & 32" Side Discharge
5648-16	Lawn Sweeper w/dump Release

Garden Tractor - Light Ground Engaging

Model	Description
5708-12	Bagger - Fits 36", 38", 39", & 45" Side Discharge
5705-04	36" Two-Stage Snowblower - Fits 36", 38", 39", & 45"
5661-06	42" Snowblade - Fits 36", 38", 39", & 45"
5672-01	Wheel Weights - Front - 1 pr. w/mtg. hdw. - Fits 15" tires
5673-02	Wheel Weights - Rear - 1 pr. w/mtg. hdw. - Fits 18" & 20" tires
5648-16	Lawn Sweeper w/dump Release
5667-02	Sleeve Hitch - w/lift bar - Fits 48"
5688-01	Adaptor (sleeve hitch) for use w/23" tires
5708-00	Tire Chains - 20" x 10"
5671-00	Tire Chains - 23" x 9.50"
5672-02	Wheel Weights - Front - 1 pr. w/mtg. hdw. - Fits 16" tires
5673-00	Wheel Weights - Rear - 1 pr. w/mtg. hdw. - Fits 23" tires
5674-01*	10" One Bottom Moldboard Plow
5675-01*	Cultivator - 7 row - Adj. 6" - 42" width
5676-01*	Disc Harrow - 8" & 11" disc - Adj. width & disc angle
5677-02*	Tiller - 5 H.P. Self-Powered - 28" width

Four Wheel Steer

Model	Description
5708-14	Bagger - Fits 40" & 46" Side Discharge
5705-05	42" One-Stage Snowblower - Fits 40" & 46"
5681-07	48" Snowblade - Fits 40" & 46"
5709-04	Rear Weight Box for 40" & 46"
5648-16	Lawn Sweeper w/dump Release
5706-00	Tire Chains 20" x 10"
5671-00	Tire Chains 23" x 9.50"
5672-02	Wheel Weights - Front - 1 pr. w/mtg. hdw. - Fits 16" tires
5673-00	Wheel Weights - Rear - 1 pr. w/mtg. hdw. - Fits 23" tires
5672-01	Wheel Weights - Front - 1 pr. w/mtg. hdw. - Fits 15" tires
5673-02	Wheel Weights - Rear - 1 pr. w/mtg. hdw. - Fits 18" & 20" tires

Four Wheel Steer Garden Tractor

Model	Description
5667-04	Sleeve Hitch - w/lift bar - Fits 48"
5674-01*	10" One Bottom Moldboard Plow
5676-01*	Cultivator - 7 row - Adj. 6" - 42" width
5676-01*	Disc Harrow 8" & 11" Disc - Adj. width & disc angle
5677-02*	Tiller 5 H.P. Self-Powered - 28" width
5648-16	Lawn Sweeper w/dump Release

*Requires a sleeve hitch