

OWNER'S MANUAL

42" SNOW THROWER ATTACHMENT

(Made by HABAN Manufacturing Co. for NOMA Outdoor Products Inc.)

NOMA MODEL 5705-0500

HABAN MODEL 372-001

*TWO YEAR LIMITED WARRANTY

For two (2) years from date of purchase by the first consumer for residential use (thirty (30) days commercial use), NOMA Outdoor Products Incorporated warrants that it will replace free of charge, including labor, any original part of any NOMA Outdoor Products Incorporated product found to be defective by any authorized Service Dealer or the factory, except the battery which is warranted for ninety (90) days from date of purchase.

This warranty does not cover engine, transmission, transaxle or differential (these items are covered by their manufacturer's own warranty). This warranty does not cover parts that have failed due to normal wear or parts that have failed subject to misuse or abuse. Transportation of the unit or part to and from an authorized Service Dealer or factory is the responsibility of the owner.

A step by step explanation as to what procedure should be followed for this Warranty is:

1. If a part becomes defective, contact the store where the unit was purchased for the name and address of the authorized Service Dealer nearest to you.
2. If you cannot locate an authorized Service Dealer, write Service Department of NOMA Outdoor Products Incorporated for the name and address of the authorized Service Dealer in your area or call the Service Department at 1-901-422-1690.
3. Return the defective product, along with proof of purchase to such authorized Service Dealer for replacement of any defective part where covered by this warranty.

There is no other express warranty, implied warranties, including those of merchantability and fitness for a particular purpose are limited to two (2) years from date of purchase. Liability for incidental or consequential damages are excluded.

Some states do not allow limitations on how long an implied warranty lasts, so the above limitation may not apply to you. Some states do not allow the exclusion of incidental or consequential damages, so the above exclusion may not apply to you. This warranty gives you specific legal rights, and you may have other rights which vary from state to state.

*WARRANTY PROVIDED BY:

NOMA Outdoor Products Incorporated

Call 800

Jackson, TN 38308-8000

UNIT PARTS AND SERVICE

This manual contains instructions for safety, assembly and maintenance. Read this manual carefully and completely so that you will know proper assembly, use and care of your unit. Also fill in and mail the registration card packed with the unit. For service other than covered in this manual, contact an authorized service dealer. A nationwide parts and service organization has been established to provide locally available parts and service. A list of authorized parts distributors has been included in this manual. When ordering repair parts, always give the following information: 1. The Part Name; 2. The Part Number; 3. The Quantity desired; 4. The complete Model Number of the unit. The model number will be found on a plate attached to the unit.

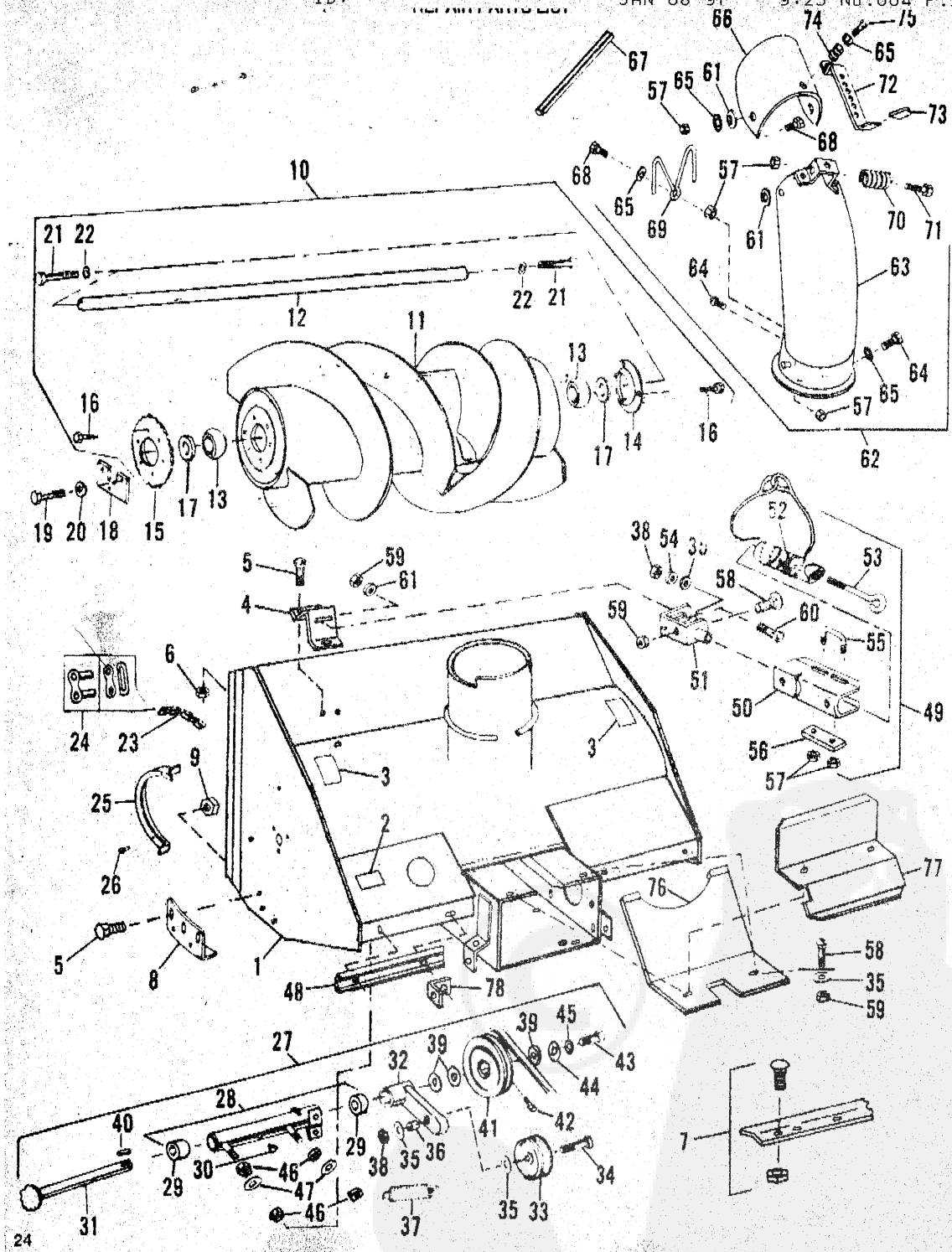


Look for this symbol. It means - ATTENTION! BECOME ALERT! A HAZARD TO OPERATOR, BYSTANDER, PROPERTY OR EQUIPMENT MAY EXIST.

HABAN Manufacturing Co.
2100 Northwestern Avenue
Racine, Wisconsin 53404

Part No. 311872

4389

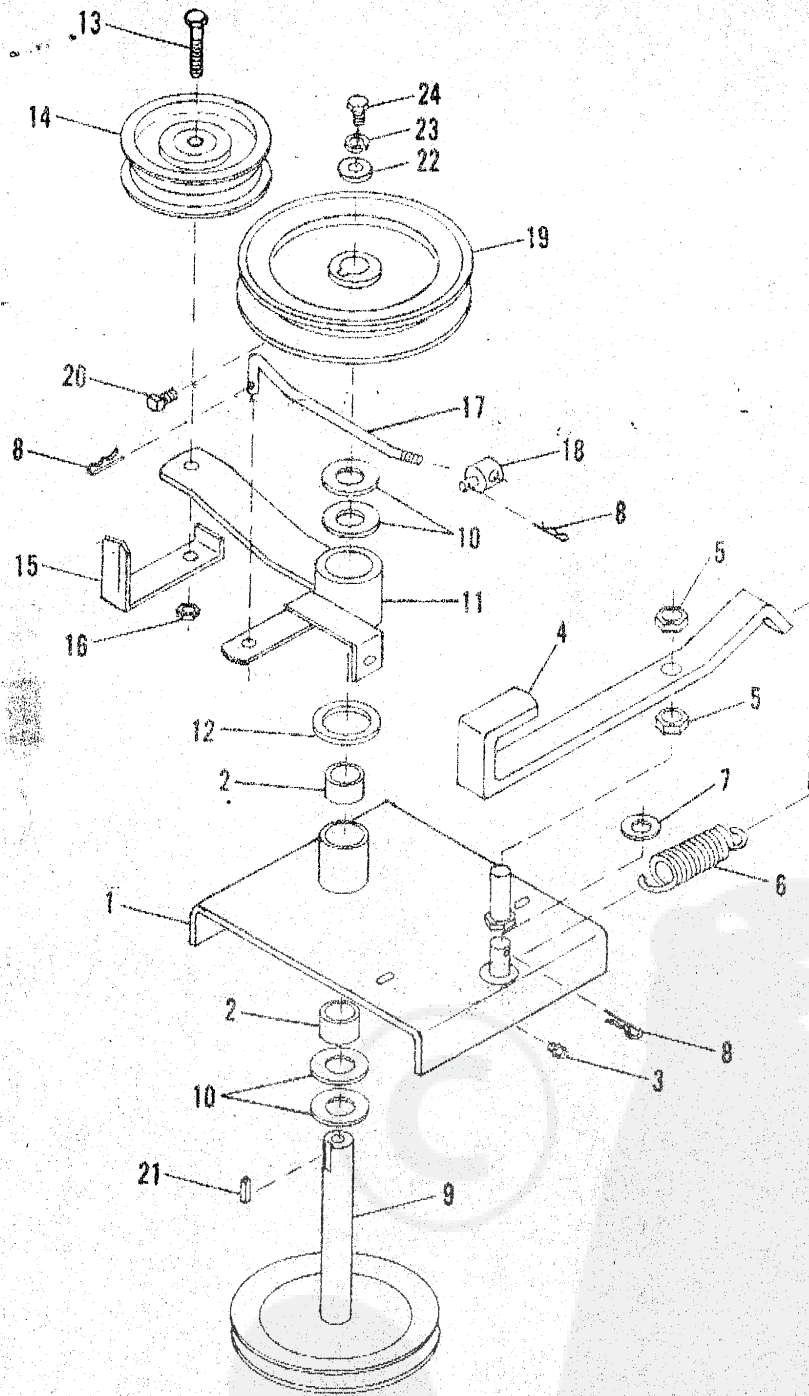


Ref. No.	Part No.	Description	Qty.
1	19419	Header & Decal Assy.	1
2	9713	CAUTION Decal	1
3	18093	DANGER Decal	2
4	19396	Stack Drive Support Bracket	1
5	7953	Bolt - 5/16-18 x 3/4 Carriage	9
6	GM-273802*	Nut - 5/16-18 Ser. Fl. Hex Lock	3
7	19420	Repair Kit - 40" Scraper	1
8	3045	Skid Shoe	2
9	GM-271184*	Nut/L Washer Assy. - 5/16-18 Hex	6
10	19409	Auger Assy. - Complete	1
11	19410	Auger Assy.	1
12	19416	Auger Shaft	1
13	9052	Auger Shaft Bearing	2
14	5473	Bearing Flange	1
15	8287	Auger Sprocket - 35 Tooth	1
16	9131	Screw - 5/16-18 x 3/4 Self Tapping Hex Head	9
17	4143	Washer	2
18	8185	Auger Mounting Plate	1
19	GM-180075*	Bolt - 5/16-18 x 5/8 Hex Head	3
20	GM-120214*	Washer - 3/16 Med. Lock	3
21	GM-180176*	Bolt - 1/2-13 x 1-1/4 Hex Head	2
22	GM-120304*	Washer - 1/2 Med. Lock	2
23	3029	Auger Drive Chain	1
24	5450	Chain Repair Kit	1
25	3056	Chain Guard	2
26	GM-94140121*	Screw - 1/4-14 x 1/2 Hex Washer Head Self Tapping	4
27	19421	Jackshaft Housing Assy. - Complete	1
28	19430	Jackshaft Housing & Bearing Assy.	1
29	8259	Bearing	2
30	5074	Grease Fitting	1
31	19431	Jackshaft & Sprocket Assy.	1
32	19498	Idler Arm Assy.	1
33	11406	Idler Pulley Assy.	1
34	GM-190134*	Bolt - 3/8-16 x 2-1/2 Hex Head	1
35	GM-120058*	Washer - 7/16 x 1 x .083	4
36	5713	Spacer	1
37	3050	Spring	1
38	GM-9413554*	Nut - 3/8-16 Hex Lock	2
39	3396	Washer	3
40	3259	Key - 3/16 Square x 7/8	1
41	4830	Pulley & Hub Assy.	1
42	GM-142671*	Screw - 5/16-18 Sq. Head Cup Pt. Set	1
43	GM-180120*	Bolt - 3/8-16 x 3/4 Hex Head	1
44	GM-448383*	Washer - 3/8 x 7/8 x .083	1
45	GM-120382*	Washer - 3/8 Med. Lock	1
46	GM-120376*	Nut - 1/2-13 Lt. Hex	4
47	GM-120389*	Washer - 1/2 x 1-1/4 x .083	2
48	19423	Jackshaft Support Bracket	1
49	9283	Stack Drive Assy. - Complete	1
50	9030	Stack Drive Shroud	1
51	9032	Bracket & Tube Assy.	1
52	8346	Cable, Tube & Sleeve Assy.	1
53	3955	Eye Bolt	1
54	4772	Spring Washer	1
55	8236	Level Wind "U" Bolt	1
56	9299	Friction Strap	1
57	4119	Nut - 1/4-20 Hex Center Lock	7
58	GM-126227*	Bolt - 3/8-16 x 3/4 Carriage	3
59	GM-271190*	Nut/L Washer Assy. - 3/8-16 Hex	4
60	GM-126915*	Bolt - 3/8-16 x 1 Carriage	1
61	4506	Washer - 13/32 x 1-1/2 x .051	3
62	19448	Deflector & Elbow Assy. - Complete	1
63	19446	Deflector & Elbow Assy.	1
64	GM-180016*	Bolt - 1/4-20 x 1/2 Hex Head	2
65	3903	Washer	7
66	19449	Deflector & Decal Assy.	1
67	19417	Seal Trim	1
68	GM-180020*	Bolt - 1/4-20 x 3/4 Hex Head	3
69	3076	Chute Finger Guard	1
70	19445	Deflector Lock Spring	1
71	GM-180042*	Bolt - 1/4-20 x 1-3/4 Hex Head	1
72	19482	Deflector Lock Strap	1
73	19483	Rubber Handle Grip	1
74	19484	Rubber Grommet	1
75	GM-180018*	Bolt - 1/4-20 x 5/8 Hex Head	1
76	10384	Drive Pulley Guard	1
77	18695	Exhaust Deflector Plate	1
78	7630	Spring Anchor Bracket	1

* Standard Hardware - Purchased Locally

Ref No.	Part No.	Description	Qty.
1	16171	Pivot Bracket Channel Assy.	1
2	GM-180085*	Bolt - 5/16-18 x 1-3/4 Hex Head	4
3	GM-180087*	Bolt - 5/16-18 x 2 Hex Head	2
4	GM-9413447*	Nut - 5/16-18 Hex Lock	6
5	GM-446363*	Washer - 3/8 x 7/8 x .083	2
6	11418	Header Channel Strap	2
7	GM-120915*	Bolt - 3/8-16 x 1 Carriage	4
8	GM-120388*	Washer - 7/16 x 1 x .083	14
9	GM-271190*	Nut/L.Washer Assy. - 3/8-16 Hex	6
10	3058	Eye Bolt	2
11	GM-120377*	Nut - 3/8-16 Lt. Hex.	4
12	5713	Spacer	2
13	19424	Belt Adj. Guide Bracket	1
14	GM-126422*	Bolt - 3/8-16 x 2-1/4 Carriage	2
15	19526	Rear Mtg. Frame Assy.	1
16	14359	Wheel Bracket Pin	2
17	3430	Hair Cotter Pin	5
18	19535	Front Mtg. Frame Assy.	1
19	19539	Crank Rod Support	1
20	GM-180138*	Bolt - 3/8-16 x 3 Hex Head	2
21	GM-180134*	Bolt - 3/8-16 x 2-1/2 Hex Head	2
22	GM-9413534*	Nut - 3/8-16 Hex Lock	10
23	19540	Up Stop Bracket Assy.	1
24	GM-180122*	Bolt - 3/8-16 x 1 Hex Head	2
25	19544	Pulley Drive Assy. - Complete	1
26	19560	V-Belt - Long	1
27	19570	V-Belt - Short	1
28	19545	Lift Handle Assy. (w/ grip)	1
29	3339	Handle Grip	1
30	19550	Lift Bracket Assy.	1
31	19581	Lift Control Strap	2
32	3700	Trunnion	2
33	GM-180124*	Bolt - 3/8-16 x 1-1/4 Hex Head	2
34	5074	Grease Fitting	1
35	GM-180130*	Bolt - 3/8-16 x 2 Hex Head	2
36	18123	Crank Rod Support Assy.	1
37	11712	Chute Control Decal	1
38	18124	Crank Guide Bushing	1
39	18120	Crank Rod Anchor Bolt	1
40	4355	Crank Rod	1
41	10840	Handle Grip	1
42	4798	Lift Spring	2
43	5737	Chain & Toggle Assy.	2
44	3341	Hair Cotter Pin	2
45	19531	Front Mtg. Bracket Assy. - L.H.	1
46	19533	Front Mtg. Bracket Assy. - R.H.	1
47	GM-180079*	Bolt - 5/16-18 x 1 Hex Head	4
48	GM-271184*	Nut/L.Washer Assy. - 5/16-18 Hex	4
49	3398	Clevis Pin	2
50	19604	Belt Retainer Assy.	1
51	15844	Tail Reflector	1
52	17570	Washer	2

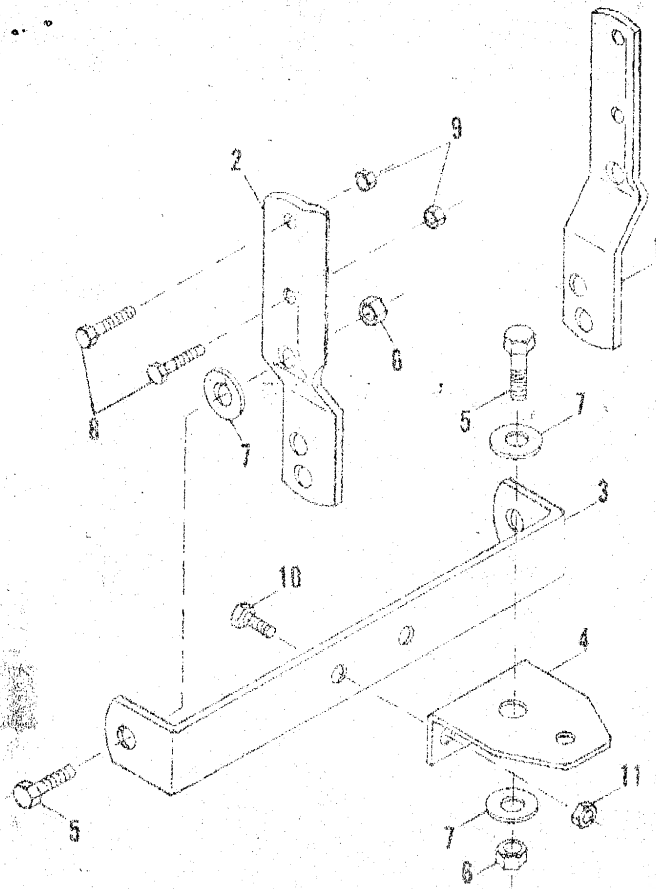
* Standard Hardware - Purchased Locally



<u>Ref. No.</u>	<u>Part No.</u>	<u>Description</u>	<u>Qty.</u>
1	19557	Jackshaft Housing & Bearing Assy.	1
2	8689	Needle Bearing	2
3	5074	Grease Fitting	1
4	19562	Belt Brake Strap	1
5	GM-9414074*	Nut - 1/2-13 Hex Lock	2
6	3059	Spring	1
7	GM-120396*	Washer - 17/32 x 1-1/16 x .095	1
8	3430	Half Cotter Pin	3
9	19563	Pulley & Jackshaft Assy.	1
10	3396	Washer	4
11	19566	Idler Arm Assy.	1
12	S-210	Washer	1
13	GM-180123*	Bolt - 3/8-16 x 1-3/4 Hex Head	1
14	17581	Idler Pulley Assy.	1
15	19427	Belt Retainer Bracket	1
16	GM-9413534*	Nut - 3/8-16 Hex Lock	1
17	19554	Idler Arm Rod	1
18	9492	Control Rod Anchor	1
19	19572	Pulley Assy.	1
20	GM-142671*	Screw - 5/16-18 x 1/2 Sq. Head Cup Point Set.	2
21	3259	Key - 3/16 Square x 7/8	1
22	GM-446363*	Washer - 3/8 x 7/8 x .083	1
23	GM-120382*	Washer - 3/8 Med. Lock	1
24	GM-180120*	Bolt - 3/8-16 x 3/4 Hex Head	1

* Standard Hardware - Purchased Locally





Ref. No.	Part No.	Description	Qty.
1	19673	Attachment Leg, R.H.	1
2	19674	Attachment Leg, L.H.	1
3	19675	Cross Brace	1
4	19676	Hitch Support	1
5	GM-180177*	Bolt - 1/2-13 x 1-1/2 Hex Head	3
6	GM-9414074*	Nut - 1/2-13 Hex Lock	3
7	GM-120390*	Washer - 9/16 x 1-3/8 x .109	4
8	GM-180083*	Bolt - 5/16-18 x 1-1/2 Hex Head	4
9	GM-9413447*	Nut - 5/16-18 Hex Lock	4
10	GM-180124*	Bolt - 3/8-16 x 1-1/4 Hex Head	2
11	GM-9413534*	Nut - 3/8-16 Hex Lock	2

* Standard Hardware - Purchased Locally