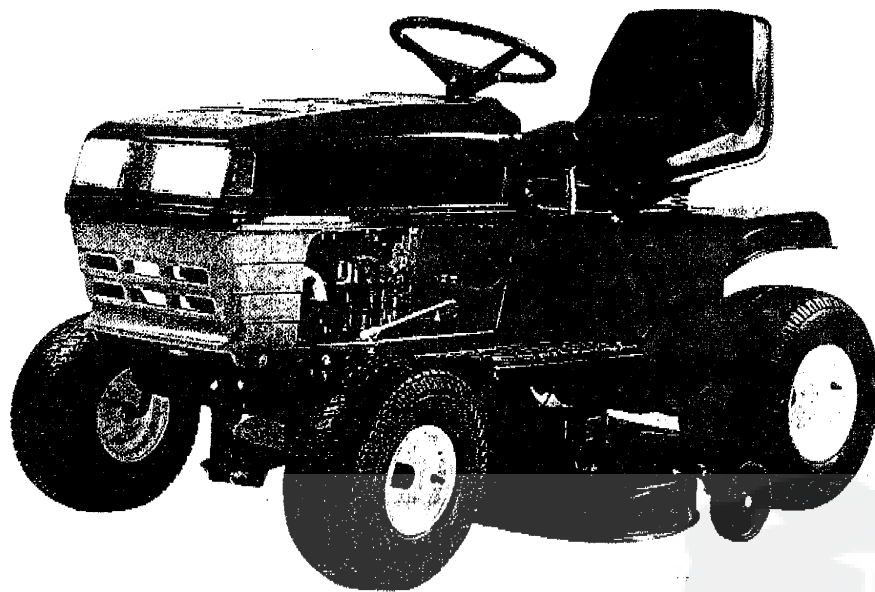


TRACTEUR TONDEUSE MANUEL PIÈCES DE RECHANGE

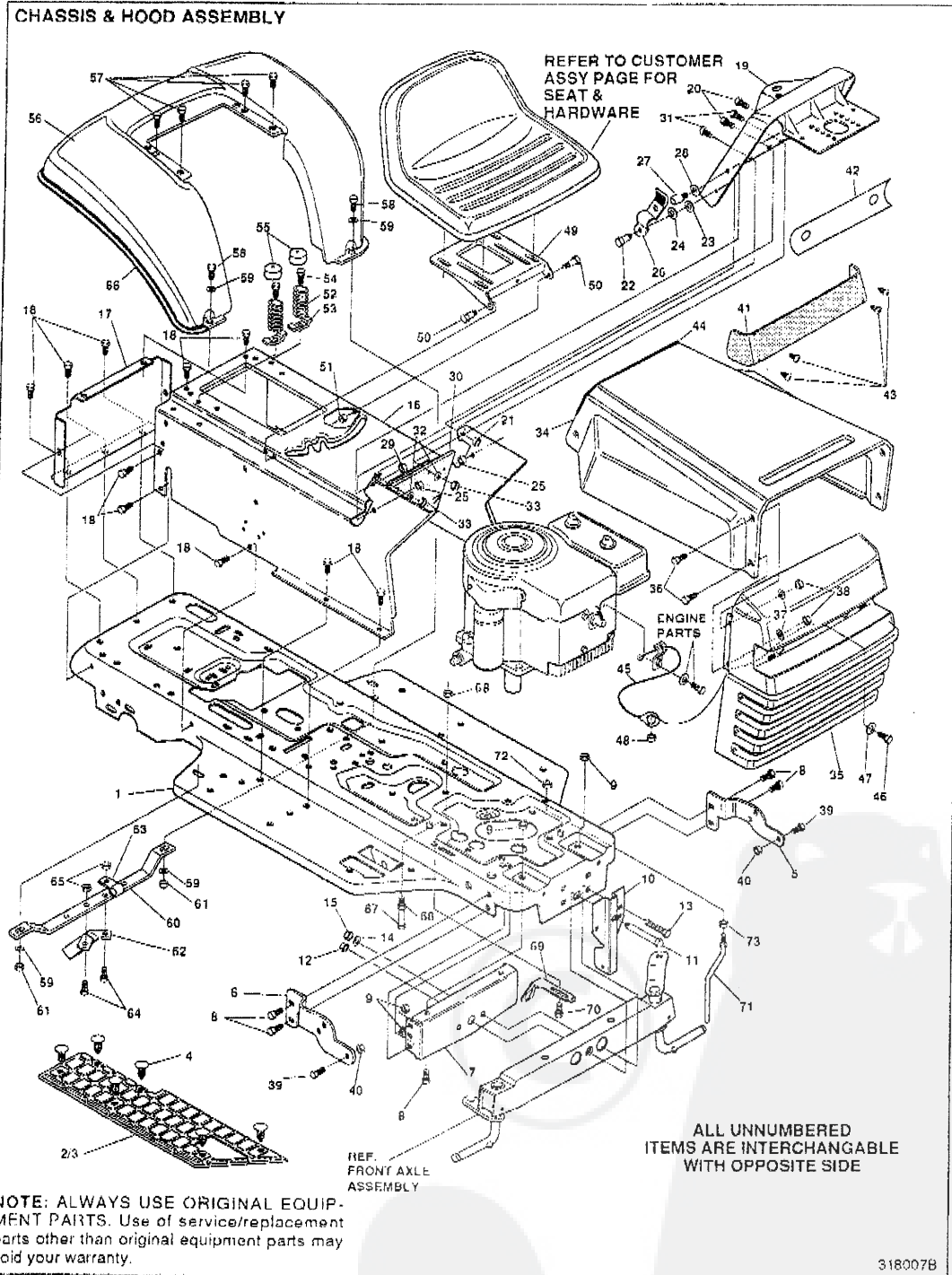


MODELE B3554-360

Piece No. 317951B

Printed in U.S.A.

TRACTEUR TONDEUSE 36" MODELE B3554-360

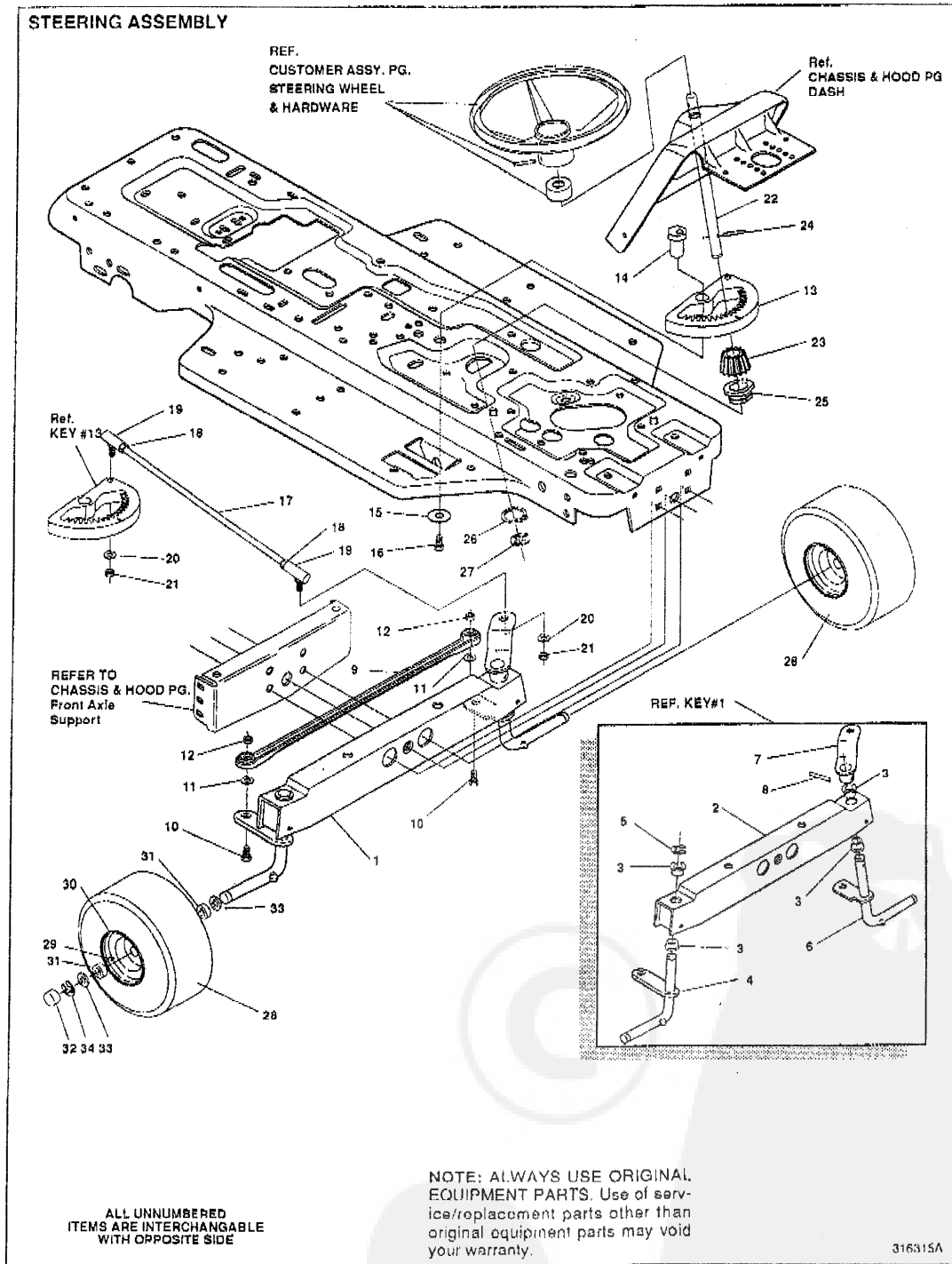


TRACTEUR TONDEUSE 36" MODELE B3554-360

key#	part#	description	qty.
1	315066	FRAME,MAIN SF RIDER	1
2	310003	FOOTPAD,LH	1
3	310004	FOOTPAD,RH	1
4	309235	FASTENER, RATCHET	12
5	316199	BRACKET,GRILLE L.H.	1
6	316200	BRACKET,GRILLE R.H.	1
7	313437	BRKT,SUPT FRT AXLE-	1
8	058030	SCREW, 5/16-18X.75WDFLLK	6
9	055273	NUT, 5/16-18 HXWDFLLK	6
10	9140	HANGER BRKT	1
11	50720	BOLT, .625X2.875 SPSH 1/2-20	1
12	0274654	NUT, 1/2-20 REGHXCTRLK	1
13	0122201	SCREW, 3/8-16X2.75 HHC	1
14	2483	WASHER, .381DX1.25DX.07 BELLVIL	1
15	01499	NUT, 3/8-16 REGHXCTRLK	1
16	309751	CONSOLE	1
17	8521	CONSOLE, REAR COVER	1
18	0995346	SCREW, 1/4-20X .50 WAHHTAP	15
19	316113	DASH	1
20	0995338	SCREW, 1/4-20X .63 HHWATAP	2
21	50352	NUT 1/4-20 WDFLLK TOP LOCK	2
22	8482	BOLT, .375X .156 HHS 5/16-18	2
23	0120394	WASHER, FLAT .406X .81X.065	2
24	0120393	WASHER, FLAT .344X .69X.065	2
25	01498	NUT, 5/16-18 REGHEXCTRLK	2
26	57159	LATCH, .94WDX.047 ASSY HOOD	2
27	53446	PIN, 5/16-18 HOOD LATCH	2
28	0138538	WASHER, REGINTLK 320X.61X.03	2
29	045174	NUT, 5/16-18 HEXWDFLLK WHIZ	2
30	312306	BAFFLE CONSOLE SOUND EXPORT	1
31	0300314	SCREW, 1/4-20X .88WAHHTAP	2
32	0120393	WASHER, FLAT .344X .69X.065	2
33	01502	NUT, 1/4-20 REGHEXCTRLK	2
34	316489	HOOD	1
35	314476	GRILLE DYNA-PRO	1
36	0274672	SCREW, 1/4-20X .63 WAHHC	4
37	0120392	WASHER, FLAT .281X .63X.065	4
38	01502	NUT, 1/4-20 REGHEXCTRLK	4
39	36149	BOLT, .375X .500 HHS 1/2-20	2
40	01498	NUT, 5/16-18 REGHEXCTRLK	2
41	302333	LENS HEADLAMP	1
42	314948	FOIL LENS DYNA-PRO REFLECTOR	1
43	057796	SCREW #6 X .50 PLASTITE	4
44	47453	EDGING,WIDE BLK	25
45	310749	LANYARD HOOD	1
46	121887	SCREW 1/4-20 X .75 HHC	1
47	120392	FLATWASHER, 281 X .63 X .065	1
48	1502	LOCKNUT 1/4-20	1
49	304761	PLATE, SEAT	1
50	20507	BOLT, .437X .156 HHS 1/2-20	2
51	01498	NUT, 5/16-18 REGHEXCTRLK	2
52	56220	SPRING, 1.43X2.38X .162 COM SEAT	2
53	1341	CLAMP, SPRING 1.17"ID	2
54	0995346	SCREW, 1/4-20X .50 WAHHTAP	2
55	302099	SPRING COVER SF SEAT SPG	2
56	7219	FENDER	1
57	0995346	SCREW, 1/4-20X .50 WAHHTAP	4
58	0122017	SCREW, 5/16-18X1.00 HHC	2
59	0446363	WASHER, FLAT .375X .88X.082	4
60	43964	SUPPORT DECK	1
61	01498	NUT, 5/16-18 REGHEXCTRLK	2
62	314876	BRACKET, DECK GUIDE	1
63	57596	RETAINER, 31 ID X .62 X .03 WIRE	1
64	122017	SCREW, 5/16-18 X 1.00 HHC	2
65	1499	NUT 5/16-18 REGHEXCTRLK	2
66	55021	TRIM STRIP BLACK	77.50
67	0427342	SCREW, 3/8-16X 6.50 HHC	1
68	1499	NUT 3/8-16 REGHXCTRLK	2
69	312953	BRACKET, SWITCH MOUNT	1
70	0995346	SCREW, 1/4-20X .50 WAHHTAP	1
71	50653	GUIDE, BELT	1
72	041529	NUT, 3/8-16 HXCTRLKJAM	1
73	0271190	NUT, 3/8-16 HEXKEPS	1
74	317247	OPERATOR'S MANUAL (NOT ILLUSTRATED) FR	1
75	317951R	PARTS MANUAL (NOT ILLUSTRATED) FR	1

♦ Indicates STANDARD HARDWARE ITEMS

TRACTEUR TONDEUSE 36" MODELE B3554-360



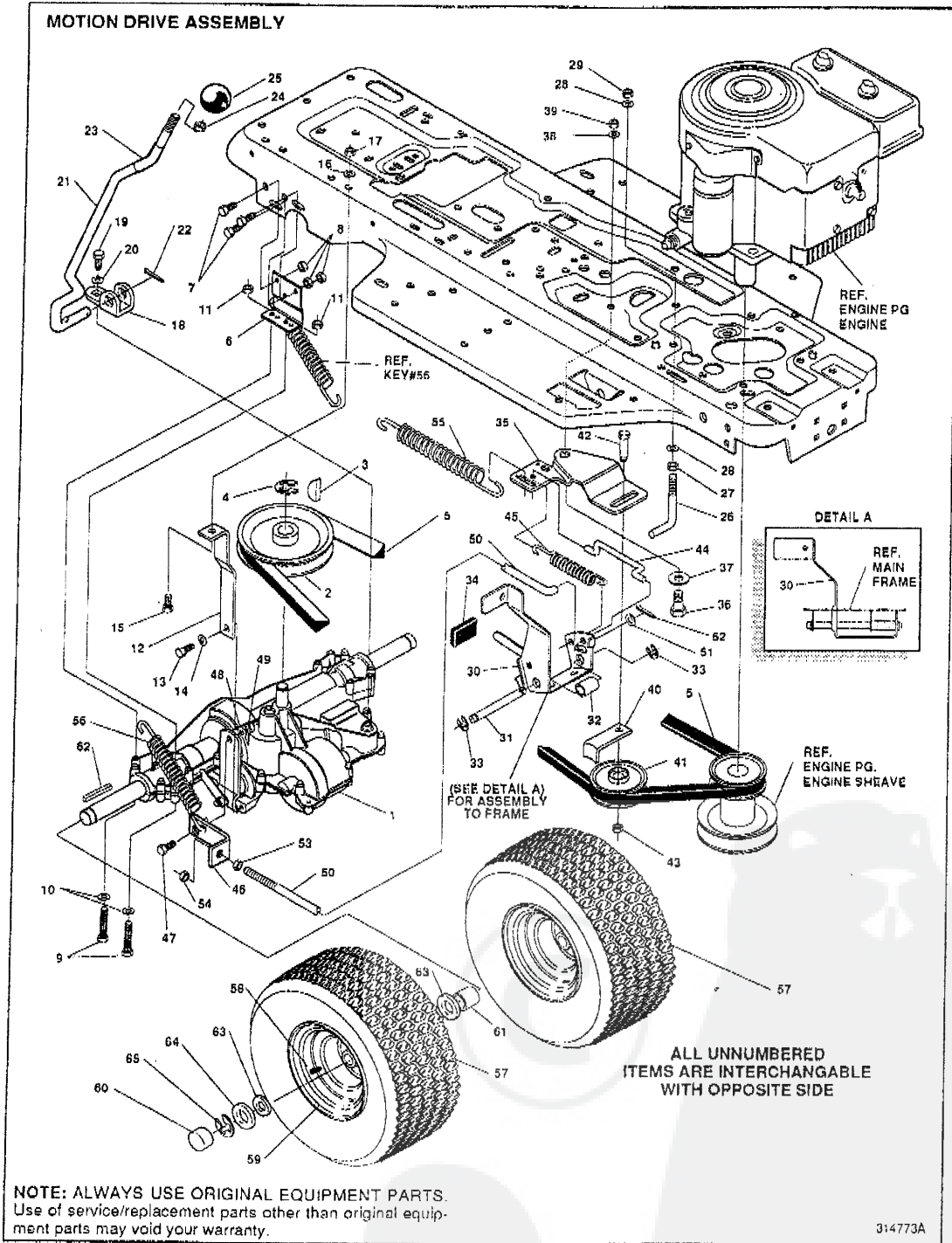
TRACTEUR TONDEUSE 36" MODELE B3554-360

key#	part#	description	qty.
1	*	FRONT AXLE ASSEMBLY SF	1
2	56400	AXLE, FRONT	1
3	50546	BEARING, FLANGE	4
4	310368	SPINDLE, RH	1
5	36625	RING, RETEX	1
6	310367	SPINDLE, LH	1
7	49447	ARM, STEERING LH	1
8	454565	PIN, SPRING	1
9	302691	TIE ROD	1
10	0122145	SCREW, 3/8-16X1.25 HHC	2
11	0120382	WASHER, 393X.68X.10 REGSPTLK	2
12	01499	NUT, 3/8-16 REGHCTRLK	2
13	304245	SECTOR, GEAR	1
14	44011	BOLT, 750X1.40 SPSH	1
15	2483	WASHER, 391DX1.26DX.07	1
16	039573	SCREW, 3/8-24X1.00 NYL	1
17	56190	DRAG LINK	1
18	0124925	NUT, 3/8-24 RECHEXJAM	2
19	21275	BALL JOINT	2
20	0120382	WASHER, REGSPTLK	2
21	0120389	NUT, 3/8-24 RECHEX	2
22	314109	STEERING SHAFT	1
23	44009	PINION, STEERING SHAFT	1
24	454565	PIN, SPRING	1
25	54902	BEARING, 1.370X.50 FLANGE STEERING	1
26	39492	RING, RETEX 1.27X.05	1
27	36625	RING, RETEX .57X.05	1
28	316702	TIRE, 15X6.00-8	2
29	24167	VALVE STEM	1
30	39829	WHEEL W/BEARING	1
31	39979	BEARING, 1.36CDX.753ID FLANGE	2
32	40394	HUB CAP	2
33	642	WASHER, FLAT 755X1.31X.075	4
34	36625	RING, RETEX .57X.05	2
35	40394	HUB CAP	2

* Order Individual Parts.

◊ Indicates STANDARD HARDWARE ITEMS.

TRACTEUR TONDEUSE 36" MODELE B3554-360



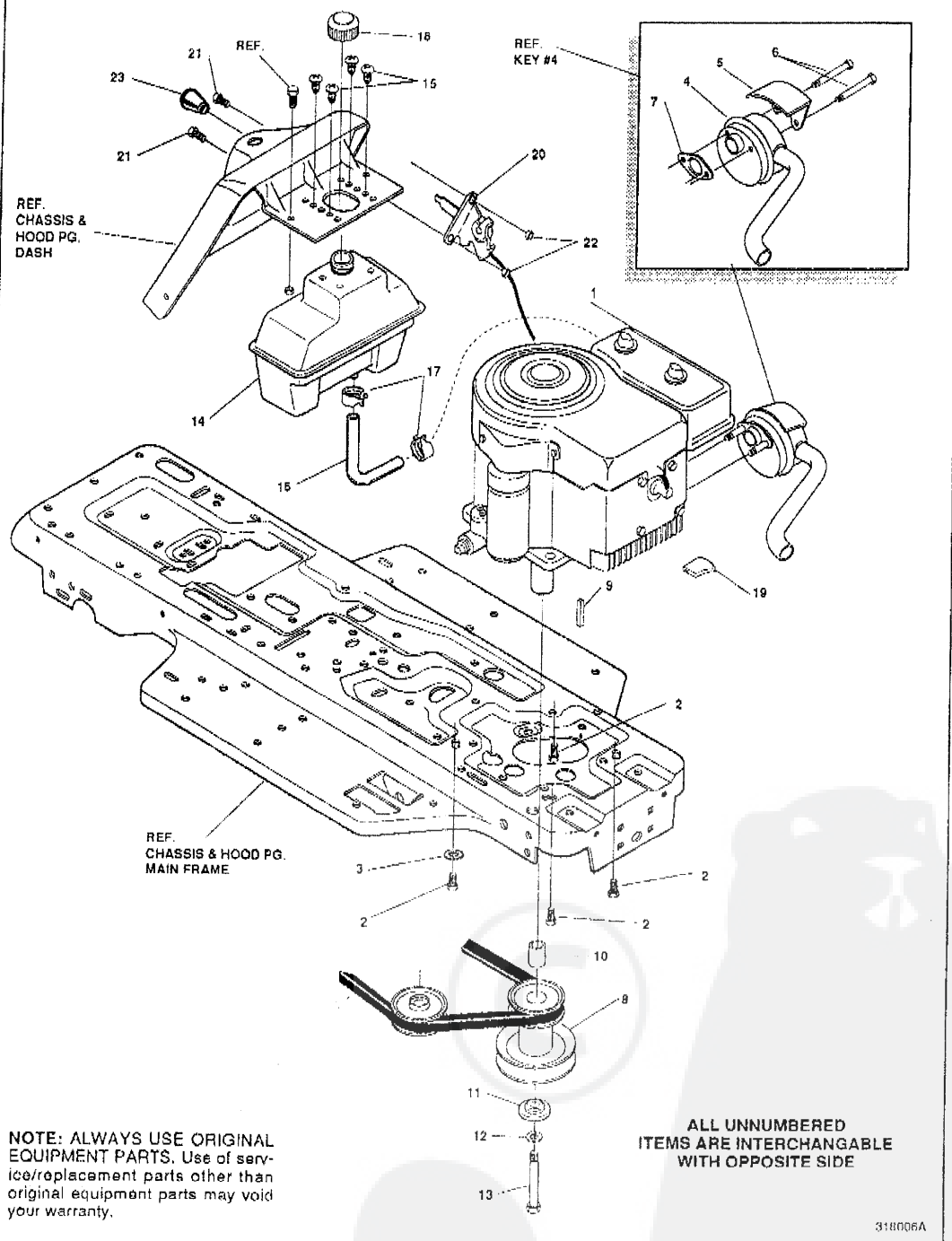
TRACTEUR TONDEUSE 36" MODELE B3554-360

key#	part#	description	qty.
1	*	TRANSAXLE FOOTE #380-5	1
2	302745	PULLEY,V 4L 6.60 OD	1
3	3021	KEY, WDF# 606 .750X.187X.312	1
4	22053	RING, RETEX .58X.041RU5100-62	1
5	54758	BELT, V 4L 82.00 SF DRIVE	1
6	7707	BRACKET, TRANSAXLE BLK	2
7	Ø 120228	SCREW, 5/16 18X .63 HHC	6
8	Ø 1498	NUT, 5/16-18 REGHEXCTRLK	6
9	Ø 180112	SCREW, 5/16-18X2.75 HHC	4
10	Ø 120393	WASHER, FLAT .344X .69X.065	4
11	Ø 1498	NUT, 5/16-18 REGHEXCTRLK	4
12	309770	BRKT,STABILIZER	1
13	Ø 35498	SCREW, 5/16-18X .75 WAHTAP	1
14	Ø 120638	WASHER, HVSP1LK .328X.60X.09	1
15	Ø 122017	SCREW, 5/16-18X1.00 HHC	1
16	Ø 138485	WASHER, EXLK .320X.61X.03	1
17	Ø 1498	NUT, 5/16-18 REGHEXCTRLK	1
18	57480	BRKT,SHIFT	1
19	Ø 56255	SCREW, 1/4-28X .75 NYLHHC	1
20	Ø 57157	WASHER, 750X 250 SP-TRANSAXLE	1
21	302283	SHIFT LEVER	1
22	137185	PIN, COTTER .125 DIA X1.00LG	1
23	302445	TUBE CLEAR PLASTIC	1
24	Ø 120238	NUT, 1/2-13 HEXJAM	1
25	304438	KNOB,SHIFT NOMA 1/2-13	1
26	49896	BELT GUIDE	1
27	Ø 271184	NUT, 5/16-18 HEXKEPS	1
28	Ø 120393	WASHER, FLAT .344X .69X.065 Z	2
29	Ø 1498	NUT, 5/16 18 REGHEXCTRLK	1
30	302603	ASSY,BRAKE PEDAL S F	1
31	302600	ROD,PIVOT	1
32	302601	SPACER, .53ID X.62DX1.406 SLEEVE	1
33	20864	RING, RET E .39X.04	2
34	48761	PAD,CLUTCH/BRAKE PEDAL	1
35	1306	IDLER ARM BRKT TRACTION	1
36	41890	BOLT, .625X .218 HSSH 5/16-18	1
37	Ø 4107	WASHER, FLAT .635X1.31X.07	1
38	Ø 45602	WASHER, FLAT .333X .97X.119	1
39	Ø 1498	NUT, 5/16-18 REGHEXCTRLK	1
40	39659	RETAINER, STRAP BELT	1
41	35374	PULLEY, IDLER V4L 3.06X .62	1
42	45892	BOLT, 3/8 16X1.50 CARR	1
43	Ø 1499	NUT, 3/8-16 REGHEXCTRLK	1
44	43980	ROD, 268 DIA CLUTCH	1
45	50562	SPRING,3/8ODX1.625X.055	1
46	54723	BRACKET, BRAKE ROD	1
47	20507	BOLT, .437X .155 HSSH 5/16-18	1
48	Ø 120393	WASHER, FLAT .344X .69X.065	1
49	Ø 1498	NUT, 5/16-18 REGHEXCTRLK	1
50	310189	BRAKE ROD RIDER	1
51	Ø 120393	WASHER, FLAT .344X .69X.065	1
52	121222	PIN, COTTER .090/086X.75LG	1
53	Ø 271184	NUT, 5/16 18 HEXKEPS	1
54	Ø 1498	NUT, 5/16 18 REGHEXCTRLK	1
55	49276	SPRING,3/4 ODX6.75X.091	1
56	35410	SPRING, .071 X .62 X 4.37	1
57	318701	TIRE PU 18X9.5X8 TURWHI	2
58	24167	VALVE STFM	1
59	41105	WHEEL & HUB ASSY 9.50X8 WHITE	1
60	40394	CAP, 1.500ID X 7/8LG HUB	2
61	57479	SPACER, .75 X 1.25 X 1.32	2
62	39628	KEY, SQUARE .1875OX2.50LG	2
63	Ø 642	WASHER, FLAT .755X1.31X.075	4
64	Ø 42815	WASHER, FLAT .755X1.53X.07	2
65	36625	RING, RETEX .67X.05	2

* CONTACT YOUR NEAREST FOOTER TRANSAXLE DEALER.
 Ø STANDARD HARDWARE ITEMS.

TRACTEUR TONDEUSE 36" MODELE B3554-360

ENGINE & CONTROL ASSEMBLY

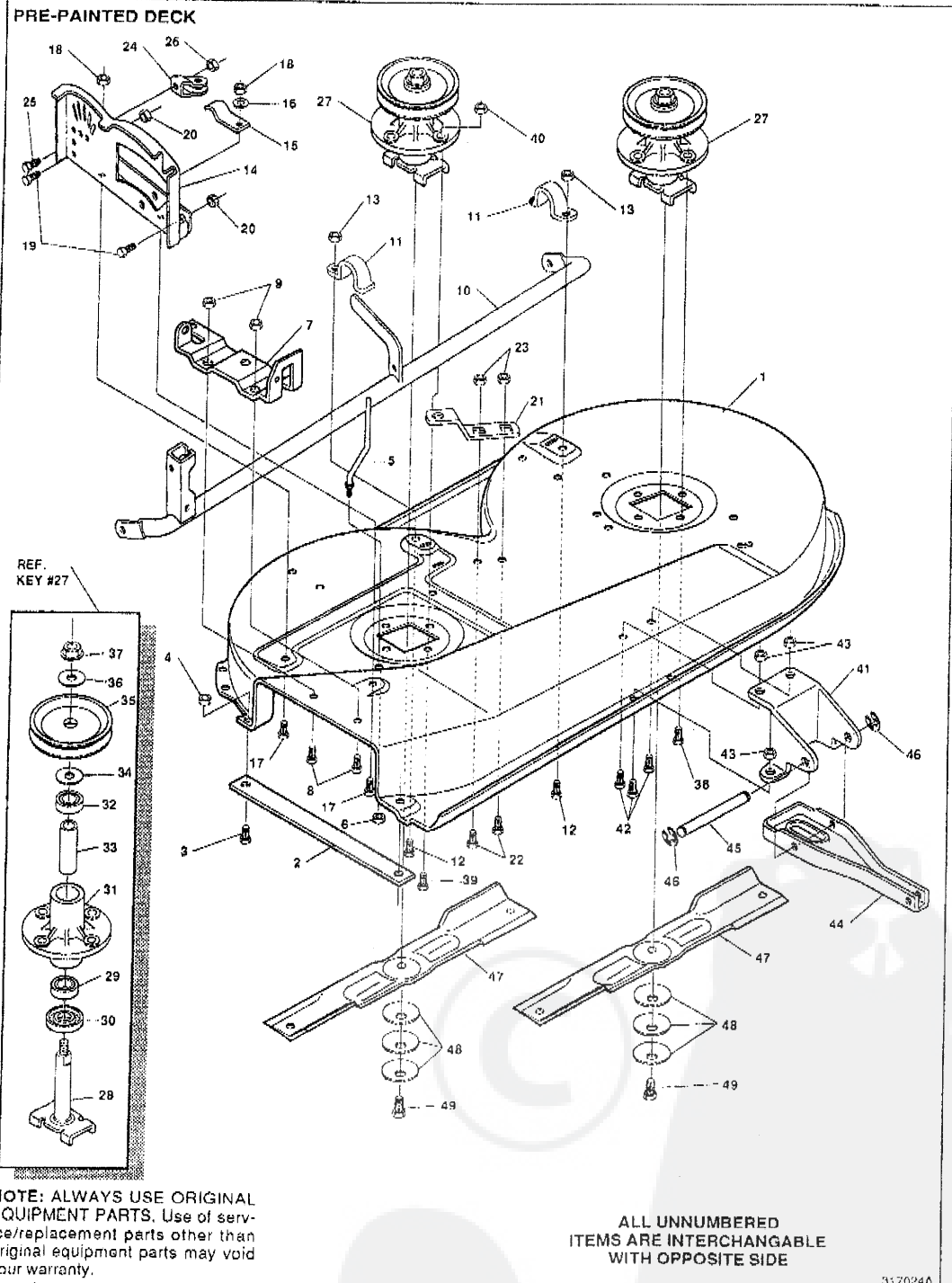


TRACTEUR TONDEUSE 36" MODELE B3554-360

key#	part#	description	qty.
1	ENGINE	12 HP B&S VC (SEE ENGINE MANUAL)	1
2	050947	SCREW, 3/8-16X1.25 WAHTAP	4
3	◊138489	WASHER, EXLK.384X.69X.04	1
4	305367	MUFFLER-LO TONE NELSON EXPORT	1
5	54767	SHIELD, HEAT, FOR ROUND MUFFLER	1
6	◊173063	SCREW, 5/16-18X3.50 HHC	2
7	46708	GASKET, MUFFLER	1
SUB 328028	⑧ 315317	PULLEY, ENGINE, 4.00 OFFSET	1
	9 303151	KEY, SQUARE .249SQX4.50LG	1
	10 304246	SPACER, 1.01X1.484 ENGIN PULLEY	1
	11 56431	WASHER, .960DX1.38ODX.437PILOT	1
	12 ◊120383	WASHER, REGSPTLK.459X.78X.12	1
	13 ◊433146	SCREW, 7/16-20X4.25 HHC	1
	14 314989	TANK, FUEL 1 GAL	1
	15 ◊49050	SCREW, 1/4-10X .75PHPNTAP	4
	16 47452	GAS LINE .25ID	12"
	17 48672	CLAMP, FUEL LINE	2
	18 46704	GAS CAP 1-1/2-7 THD	1
	19 302967	ENGINE SPEED REDUCER	1
	20 303275	THROTTLE CONTROL	1
	21 ◊36291	SCREW, 10-24X .50 SLHHMA	2
	22 ◊271166	NUT, #10-24 HEXKEPS	2
	23 50607	KNOB, ROUND THROTTLE	1

◊ Indicates STANDARD HARDWARE ITEMS.

TRACTEUR TONDEUSE 36" MODELE B3554-360



NOTE: ALWAYS USE ORIGINAL EQUIPMENT PARTS. Use of service/replacement parts other than original equipment parts may void your warranty.

ALL UNNUMBERED ITEMS ARE INTERCHANGABLE WITH OPPOSITE SIDE

317024A

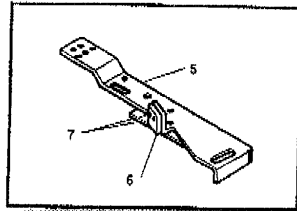
TRACTEUR TONDEUSE 36" MODELE B3554-360

key#	part#	description	qty.
1	310243	Deck	1
2	57314	Bar, Skid	1
3	◊ 126216	Bolt, 5/16-18 x .75 Carr. GR2	2
4	◊ 271184	Nut, 5/16-18 Hex Keps	2
5	57318	Guide, Belt 5/16-18 Thd.	1
6	◊ 1498	Nut, 5/16-18 Reg Hex Ctr Lk	1
7	57360	Bracket, Chute	1
8	◊ 120834	Screw, 5/16-18 x .50 H HC GR2	2
9	◊ 1498	Nut, 5/16-18 Reg Hex Ctr Lk	2
10	306881	Tube, 36" Assy Tongue	1
11	51985	Support, Pivot Tube	1
12	◊ 120228	Screw, 5/16-18 x .63 H HC GR2	1
13	◊ 1498	Nut, 5/16-18 Reg Hex Ctr Lk	1
14	57337	Quadrant, Height Adj.	1
15	57321	Spring, Clutch Handle Retain	1
16	120386	Washer, Flat .312 x .73 x .065	1
17	122007	Screw, 5/16-18 x .75 H HC GR2	2
18	◊ 1498	Nut, 5/16-18 Reg Hex Ctr Lk	2
19	◊ 122040	Screw, 5/16-18 x 1.50 H HC GR2	2
20	◊ 1498	Nut, 5/16-18 Reg Hex Ctr Lk	2
21	◊ 300179	Bracket, Idler Support	1
22	◊ 180077	Screw, 5/16-18 x .75 H HC GR5	2
23	44108	Nut, 5/16-18 Hwd Fl Lk Whip	2
24	◊ 49320	Cable, Pulley Support	1
25	◊ 120228	Screw, 5/16-18 x .63 H HC GR2	1
26	1498	Nut, 5/16-18 Reg Hex Ctr Lk	1
27	◊ 56424	Quill Assy, 36", 38", 39", & 40"	2
28	◊ 56425	Shaft/Saddle 36"	1
29	49562	Ball Bearing	1
30	50616	Dust Shield	1
31	55547	Quill Casting (1046)	1
32	49562	Ball Bearing	1
33	50818	Spacer, 3.797 LG x .669 ID x .88 OD	1
34	51449	Spacer, .438 LG x .932 OD x .672 ID-PM	1
35	56390	Pulley, 26/36" Quill V51.	1
36	56365	Special Washer	1
37	1282	Nut, 7/16-20 Wd Fl Lk	1
38	50634	Screw, 5/16-18 x .88 Wa H H Tap	7
39	300345	Screw, 5/16-18 x 1.38 Wa Tap GR2	1
40	1498	Nut, 5/16-18 Reg Hex Ctr Lk	1
41	57327	Bracket, Front	1
42	◊ 120228	Screw, 5/16-18 x .63 H HC GR2	4
43	1498	Nut, 5/16-18 Reg Hex Ctr Lk	4
44	◊ 57340	Bracket, Front Lift	1
45	◊ 57196	Rod, Pivot	1
46	20864	Ring, Rot E. .39 x .04 Trus 5133-50	2
47	56821	Blade	2
48	2483	Washer, .39ID x 1.25D x .07 Bellvil	6
49	39573	Screw, 3/8-24 x 1.00 Nyl H HC GR5	2

◊ Indicates STANDARD HARDWARE ITEMS.

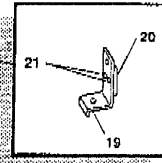
TRACTEUR TONDEUSE 36" MODELE B3554-360

FINAL DECK ASSEMBLY

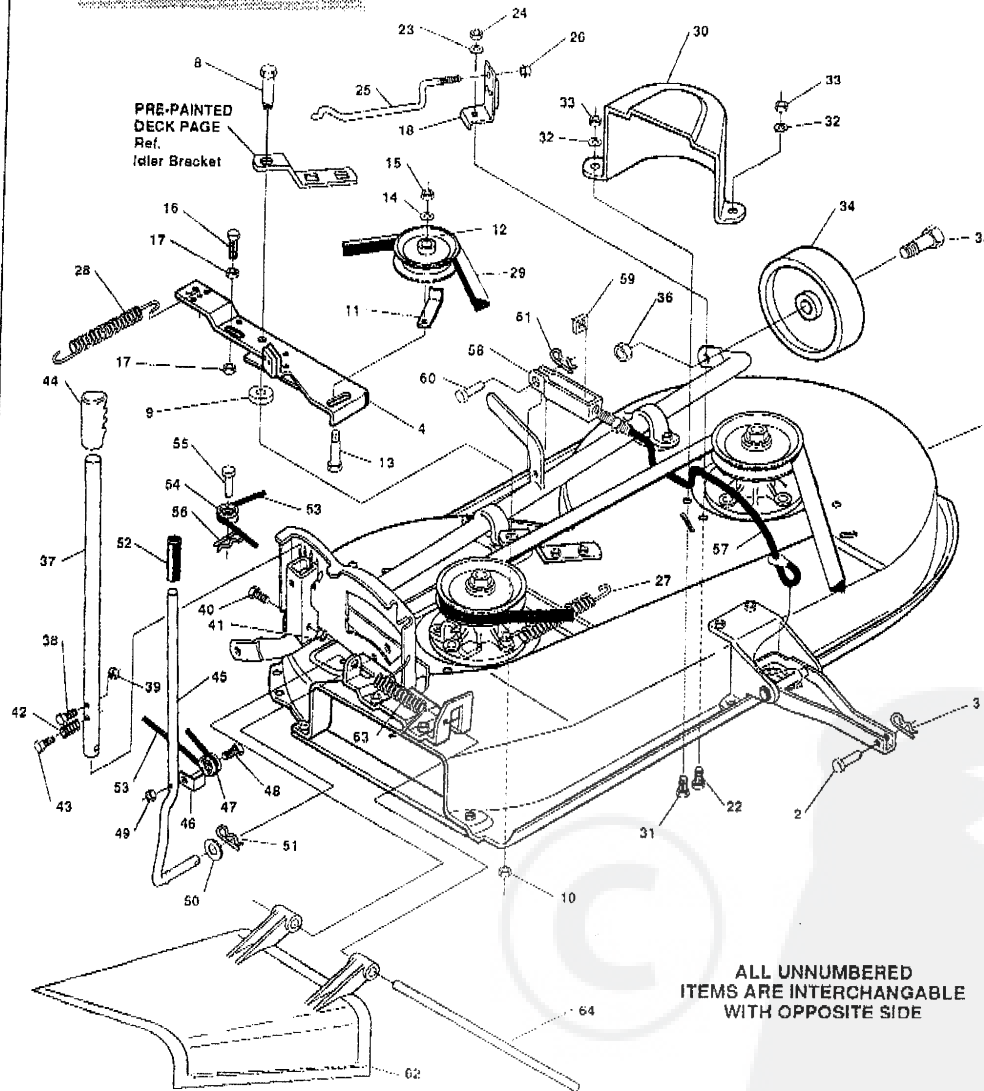


Ref. KEY # 4

Ref. KEY # 10



SEE DWG#317024 FOR PARTS ASSY OF PRE-PAINTED DECK



ALL UNNUMBERED ITEMS ARE INTERCHANGABLE WITH OPPOSITE SIDE

NOTE: ALWAYS USE ORIGINAL EQUIPMENT PARTS. Use of service/replacement parts other than original equipment parts may void your warranty.

317026A

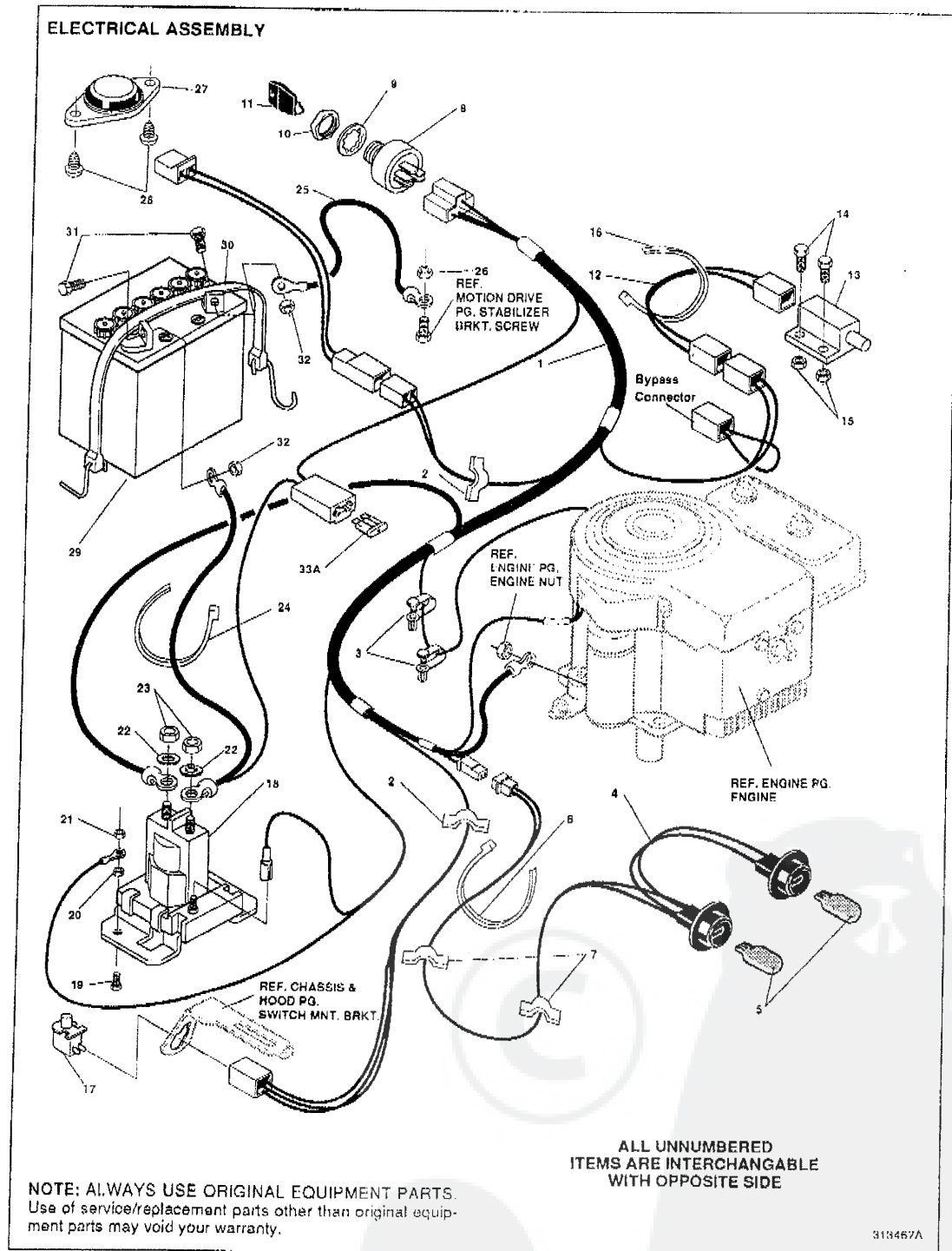
TRACTEUR TONDEUSE 36" MODELE B3554-360

key#	part#	description	qty.
1	*	DECK, 36SD ASSY PTD	1
2	47816	PIN, .495X1.750 CLEVIS-SHORT	1
3	56180	PIN, HAIR .091 DIA X1.62LG	1
4	300491	BRACKET, IDLER ARM/BRAKE	1
5	9282	IDLER ARM	1
6	308973	BRAKE PAD - HARD - 232AF	1
7	135624	RIVET, TRSET .185DIA X .41LG	2
8	300180	BOLT, .50 X1.88 HSH 3/8-16	1
9	0996416	WASHER, FLAT .391X1.00X.125	2
10	045171	NUT, 3/8-16 HWDFL WHIZ-LOCK Z	1
11	1346	RETAINER,BELT	1
12	310326	PULLEY, IDLER BFF 4.00 WIDE FL	1
13	57325	BOLT, 3/8-16X2.00 CARR	1
14	0120382	WASHER, REGSPTLK.393X.68X.10 Z	1
15	0120377	NUT, 3/8-16 REGHX	1
16	0121954	SCRCW, 1/4-20X2.00 HHC	1
17	0271172	NUT, 1/4-20 REGHEXKEPS	2
18	303247	ASSY, BLADE BRAKE	1
19	12542	BRAKE ARM B	1
20	308973	BRAKE PAD - HARD -	1
21	135624	RIVET, TRSET .185DIA X .41LG ST	2
22	120228	SCREW, 5/16-18X .63 HHC	1
23	0120393	WASHER, FLAT .344X .69X.065	1
24	01498	NUT, 5/16-18 REGHEXCTRLK	1
25	300315	ROD, BRAKE RELEASE 36&45 DECKS	1
26	01502	NUT, 1/4-20 REGHEXCTRLK	1
27	35410	SPRING .071 X .62 X 4.37	1
28	300683	SPRING, .75X6.3X.105 TENSION	1
29	302289	BELT, V 5L 73.75	1
30	302833	GUARD, BELT LH PLASTIC	1
31	0120228	SCREW, 5/16-18X .63 HHC	3
32	0120393	WASHER, FLAT .344X .69X.065	3
33	01498	NUT, 5/16-18 REGHEXCTRLK	3
34	52584	WHEEL, SD 6.00DX1.38	2
35	23763	BOLT, 603X1.360 HSH 1 3/8 16 Z	2
36	1498	NUT, 3/8 16 REGHXCTRLK	2
37	313637	LEVER, DECK HEIGHT ADJUST	2
38	57324	BOLT, 5/16-18X.56 SPCUHD LATCH	1
39	0271184	NUT, 5/16 18 HEXKEPS	1
40	0122040	SCREW, 5/16-18X1.50 HHC	1
41	01498	NUT, 5/16-18 REGHEXCTRLK	1
42	57319	SPRING, 70X.85X.091 COM HANDLE	1
43	0995348	SCREW, 1/4-20X .50 WAHHTAP	1
44	56924	GRIP, .75 X 4.25 HANDLE	1
45	313636	LEVER, CLUTCH	1
46	1288	BRACKET, CABLE RETAINER	1
47	39298	PULLEY, .906X.305 NYLON	1
48	57322	BOLT, .375X .375 HSH 1/4-20 Z	1
49	01502	NUT, 1/4-20 REGHEXCTRLK	1
50	0120396	WASHER, FLAT .531X1.06X.095	1
51	8260	PIN, HAIR .091 DIA X1.68LG	1
52	46478	GRIP, HAND .50ID 3.37LG BLK	1
53	57326	CABLE, CLUTCH 17.5"	1
54	39298	PULLEY, .906X.305 NYLON	1
55	49332	PIN, CLEVIS .375DX.81LG	1
56	121222	PIN, COTTER .090/086X.75LG	1
57	300341	CABLE, LIFT 21.70 F-5 20X8-8	1
58	9405	CLEVIS, LIFT CABLE Z-PL	1
59	0120372	NUT, 1/4-20 REGSO	1
60	39522	PIN CLEVIS .312 X .81P	1
61	56180	PIN, HAIR .091 DIA X1.62LG	1
62	57818	CHUTE DEFLECTOR	1
63	314975	SPRING TORSION CHUTE DEF.	1
64	57317	PIVOT ROD, CHUTE	1

* Order Individual Parts

0 Indicates STANDARD HARDWARE ITEMS.

TRACTEUR TONDEUSE 36" MODELE B3554-360



TRACTEUR TONDEUSE 36" MODELE B3554-360

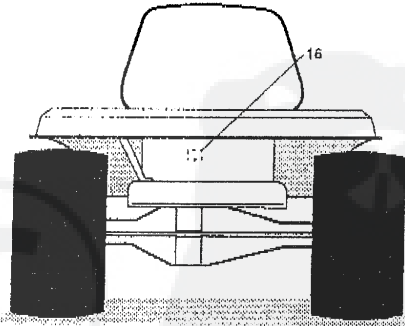
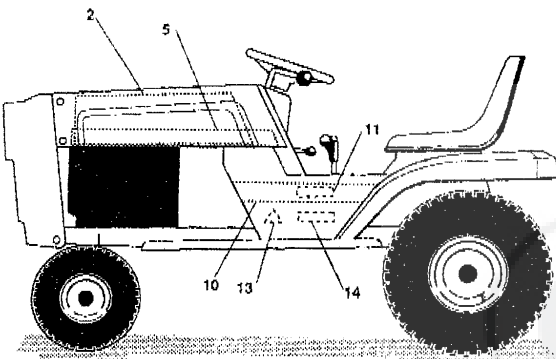
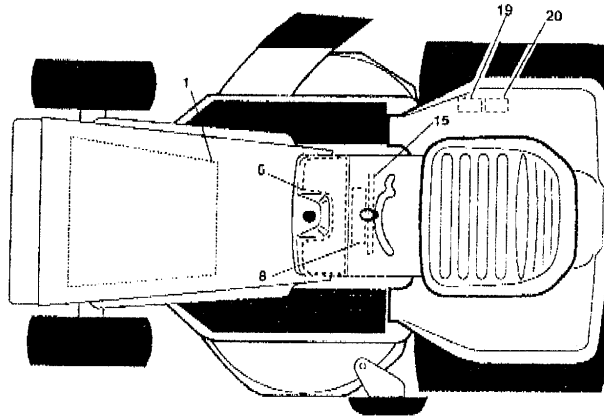
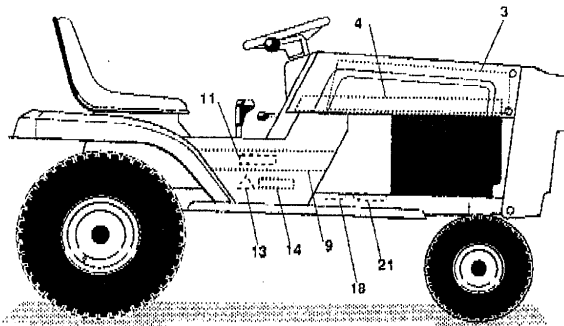
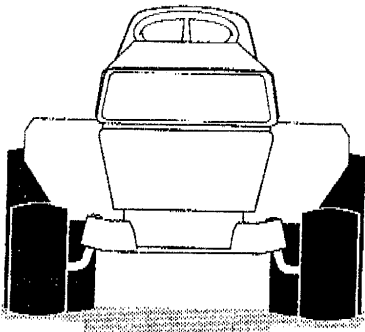
key#	part#	description	qty.
1	57842	WIRE HARNESS	1
2	41482	CLIP, PRESS WIRE	2
3	54088	RETAINER, WIRE	2
4	303064	ASSY., LIGHT WIRE	1
5	52572	BULB, HEADLAMP	2
6	57444	TIE, CABLE	1
7	41482	CLIP, PRESS WIRE	2
8	300687	SWITCH, IGNITION & LIGHTS	1
9	◇ 138557	WASHER, REGINTLK	1
10	48140	NUT, 5/8-32 HXHD IGN SWIT	1
11	300626	KEY, IGNITION SWITCH	1
12	57588	HARNESS, DECK WIRE SHORT 4 WIRE	1
13	57476	SWITCH	1
14	◇ 159943	SCREW, 10-24 X .63 PHNMA	2
15	◇ 271166	NUT, #10-24 HEXKEPS	2
16	57444	TIE, CABLE BLACK NYLON	1
17	300220	SWITCH, SNAPMNT NO .055/.116	1
18	53716	SOLENOID, NEW CLUM	1
19	◇ 187745	SCREW, 1/4-20 X .75 HXSEMMA	2
20	◇ 1502	NUT, 1/4-20 REGHEXCTRLK	2
21	◇ 271172	NUT, 1/4-20 HEXKEPS	1
22	◇ 138485	WASHER, EXLK .320 X .61 X .03	2
23	◇ 120368	NUT, 5/16-24 REGHEX	2
24	57444	TIE, CABLE	1
25	55511	WIRE, GROUND	1
26	◇ 271184	NUT, 5/16 - 18 HEXKEPS	1
27	57547	SWITCH, SEAT	1
28	◇ 180305	SCREW, 1/4-20 PNPNHM	2
29	57486	BATTERY, 12V 5 PLATE	1
30	309862	STRAP, RUBBER	1
31	◇ 120854	SCREW, 1/4-20 X .63 HHC	2
32	◇ 271172	NUT, 1/4-20 H KEPS	2
33A	**302031	FUSE, 15 AMP SHADE TYPE	1
33B	**49211	FUSE, 15 AMP CYLINDRICAL TYPE	1

◇ Indicates STANDARD HARDWARE ITEMS.

**Cylindrical or Spado type fuses are included with the wire harness.

TRACTEUR TONDEUSE 36" MODELE B3554-360

DECALS



NOTE: ALWAYS USE ORIGINAL EQUIPMENT PARTS.
 Use of service/replacement parts other than original equipment parts may void your warranty.

ALL UNNUMBERED ITEMS ARE INTERCHANGABLE WITH OPPOSITE SIDE

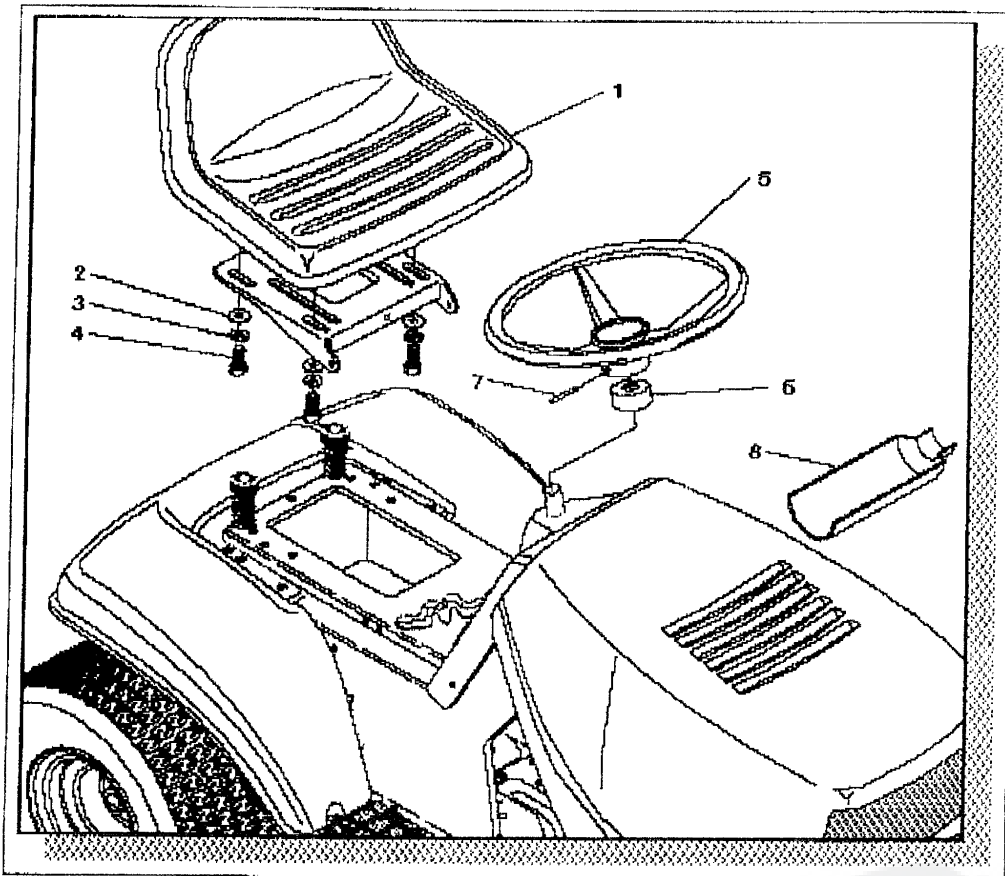
317028C

TRACTEUR TONDEUSE 36" MODELE B3554-360

key #	part#	description	qty
1	55832	PAD, FOAM TOP HOOD	1
2	55833	PAD, FOAM HOOD SIDE LH	1
3	55834	PAD, FOAM HOOD SIDE RH	1
4	314456	DECAL, HOOD STRIP RH	1
5	314457	DECAL, HOOD STRIP LH	1
6	307412	DECAL,DASH PLAIN SF DYN EURO	1
7	308692	DECAL, INSTRUCTION FRENCH	1
8	69525	DECAL,INSTRUCT CONSOLE TOP FR	1
9	314460	DECAL,RIDER CONSOL SF STRIP RH	1
10	314461	DECAL,RIDER CONSOL SF STRIP LH	1
11	300559	NAME PLATE, 12/36 WHITE	2
12		REFERENCE ONLY	1
13	305770	DECAL,CAUTION TRIANGLE EUROPE	2
14	306852	DECAL,DANGER FRENCH	2
15	301104	DECAL, CONSOLE TOP SHIFT 5-SP	1
16	310436	DECAL,FRENCH SAFETY CERT.	1
17		REFERENCE ONLY	1
18	67687	DECAL, CHECK OIL LEVEL	1
19	68900	DECAL,BLADE ENGAGE EUROPE	1
20	68901	DECAL,BLADE HEIGHT ADJ. EUROPE	1
21	68903	DECAL,BRAKE/CLUTCH EUROPE	1

TRACTEUR TONDEUSE 36" MODELE B3554-360

CUSTOMER ASSEMBLY



CUSTOMER ASSEMBLY VIEW

315134 PARTS BAG ASSY QTY1

key#	part#	decription	qty
1	304316	SEAT MV440	1
2	120393	WASHER,FLAT .344X.69X.065	4
3	120638	WASHER, HVSP LTK .328X.60X.109	4
4	122007	SCREW, 5/16-18X.75 HHC	4
5	301251	STEERING WHEEL	1
6	314775	STEERING, SLEEVE	1
7	456378	ROLL PIN .250DIA X 2.0LG	1
8	54873	OIL TROUGH	1

318009A