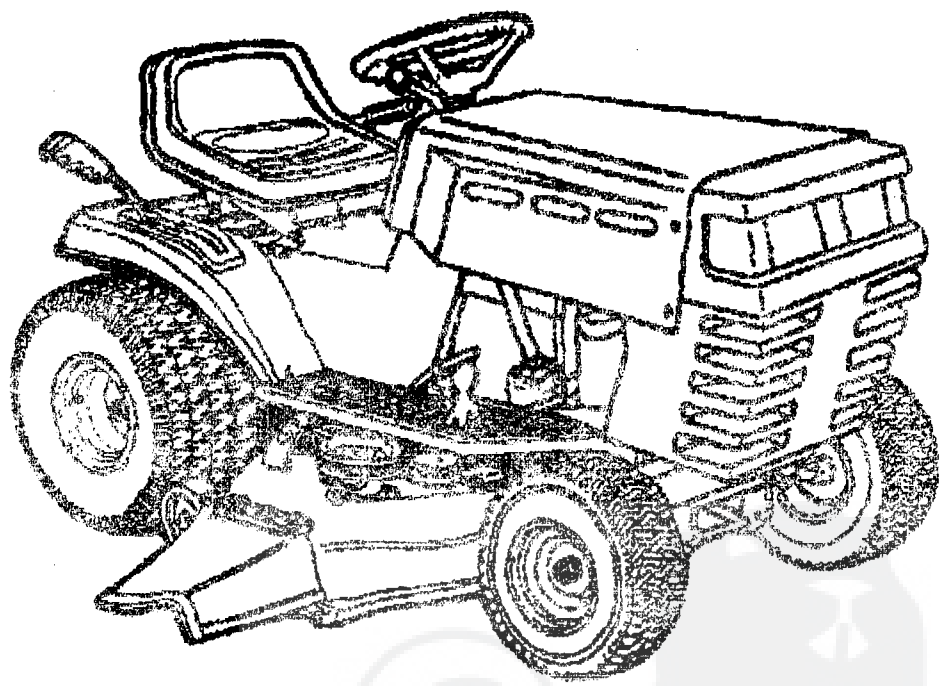


B3560-50

TRACTEUR TONDEUSE MANUEL PIÈCES DE RECHANGE

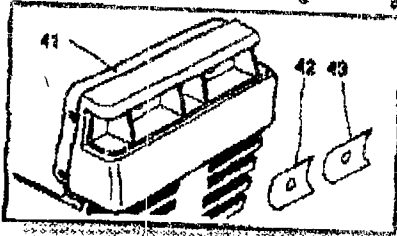
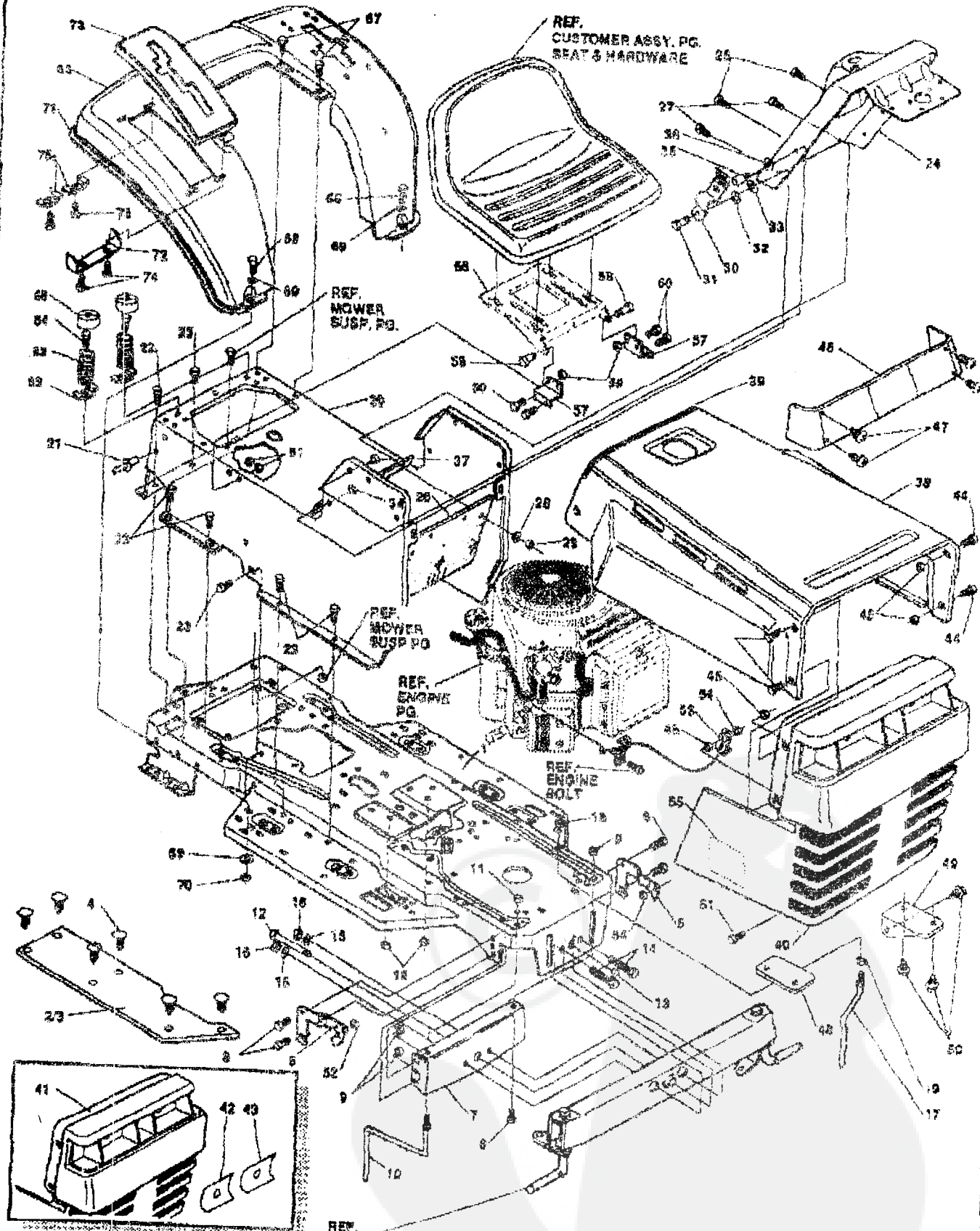


MODELE B3560-500

Picco No. 318252B

43" TONDEUSE AUTOPORTEE MODELE B3560-500

CHASSIS & CAPOT ASSEMBLAGE



NOTE: ALWAYS USE ORIGINAL EQUIPMENT PARTS. Use of service/replacement parts other than original equipment parts may void your warranty.

ALL UNNUMBERED ITEMS ARE INTERCHANGABLE WITH OPPOSITE SIDE

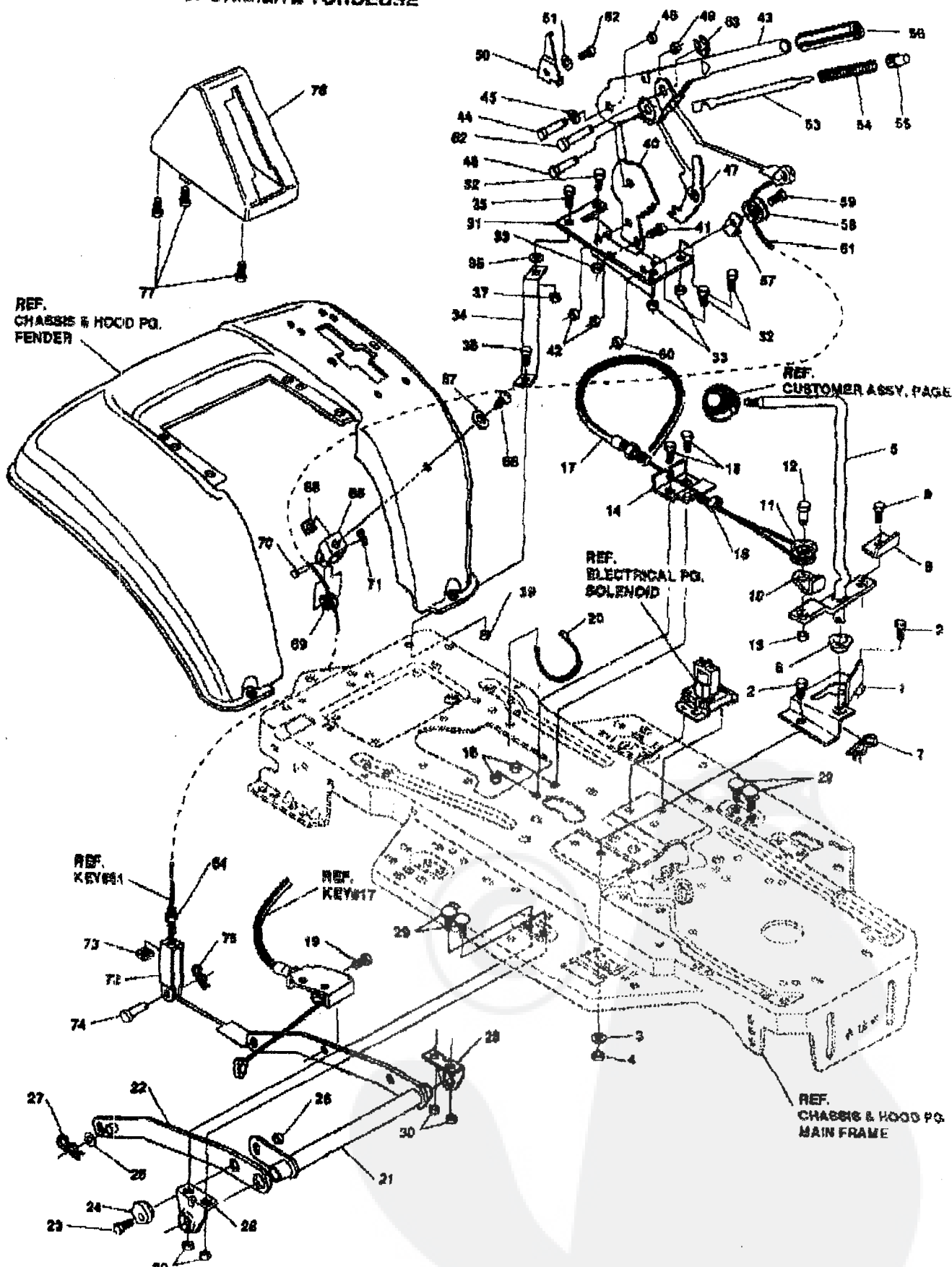
43" TONDEUSE AUTOPORTEE MODELE B3560-500

key#	part#	description	qty.
1	318289	FRAME, LF MAIN	
2	910005	FOOTPAD, LH	1
3	310006	FOOTPAD, RH	1
4	309235	FASTENER, RATCHET	1
5	12643	BRKT, GRILLE, L.H.	1
6	12644	BRKT GRILLE R.H.	1
7	56981	BRACKET, FRONT AXLE	1
8	056030	SCREW, 5/16-18X.75WDFLLK	1
9	055273	NUT, 5/16-18 HXWDFLLK	6
10	300440	GUIDE, BELT, RIDER	1
11	61488	NUT, 5/16-18 REGHEXCTRLK	1
12	308207	BOLT, .625X2.180 HNSH 1/2-13NC	1
13	0308008	NUT, 1/2-13 REGHCTRLK	1
14	0122207	SCREW, 3/8-16X3.00 HHC	1
15	2483	WASHER, .391DX1.25DX.07 BELLVIL	2
16	01488	NUT, 3/8-16 REGHXCTRLK	2
17	300636	GUIDE, BELT SHORT 15" WHEEL	2
18	0124824	NUT, 5/16-18 HEXJAM	1
19	0271180	NUT, 3/8-16 HEXKEPS	1
20	316300	CONSOLE	1
21	48763	RIVET, POP. 187DIA X .450LG ST	1
22	036497	SCREW, 5/16-18X.50 WAHHTAP	1
23	0095346	SCREW, 1/4-20X.50 WAHHTAP	1
24	317070	DASH	1
25	0095346	SCREW, 1/4-20X.50 WAHHTAP	1
26	312308	BAFFLE CONSOLE SOUND EXPORT LF	2
27	0900314	SCREW, 1/4-20X.88WAHHTAP	1
28	0120392	WASHER, FLAT .281X.63X.055	2
29	01502	NUT, 1/4-20 REGHEXCTRLK	2
30	57159	LATCH, .94WDX.047 ASSY HOOD	2
31	6482	BOLT, .375X.166 HNSH 5/16-18	2
32	0120394	WASHER, FLAT .406X.61X.065	2
33	0120393	WASHER, FLAT .344X.69X.065	2
34	01488	NUT, 6/16-18 REGHEXCTRLK	2
35	53446	PIN, 5/16-18 HOOD LATCH	2
36	138538	WASHER, REGINTLK.820X.61X.03	2
37	045174	NUT, 5/16-18 HEXWDFLLK WHIZ	2
38	307207	HOOD	2
39	47453	EDGING, WIDE	1
40	308056	ASSY, GRILLE	27.5"
41	302854	GRILLE	1
42	301628	FOIL, REFLECTOR, RH WA GRILL	1
43	301628	FOIL, REFLECTOR, LH WA GRILL	1
44	059226	SCREW, 1/4-20X1.25 WAHHTAP	1
45	050352	NUT, 1/4-20 WDFLLK TOPLOCK	4
46	302073	LENS, CLEAR W/D TABS NO LOGO	4
47	087796	SCREW, #8 X.50 PLASTITE	1
48	9897	SUPPORT, GRILLE RH	1
49	9899	SUPPORT, GRILLE LH	1
50	056021	SCREW, 1/4-14X.75 SLWATAP	1
51	38149	BOLT, .375X.500 HNSH 5/16-18	5
52	01488	NUT, 5/16-18 REGHEXCTRLK	2
53	311084	LANYARD, HOOD	2
54	050352	NUT, 1/4-20 WDFLLK TOPLOCK	1
55	301452	FOIL, HEAT REFLECTOR	1
56	307345	PLATE, SEAT	2
57	310884	BRACKET, SEAT SUPPORT	1
58	20507	BOLT, .437X.166 HNSH 5/16-18	1
59	01488	NUT, 5/16-18 REGHEXCTRLK	2
60	046901	SCREW, 5/16-18X.63 HHC	2
61	01488	NUT, 5/16-18 REGHEXCTRLK	4
62	67153	SPRING, SEAT 2.63LG.1.490D	4
63	1341	CLAMP SPRING 1.17"ID	2
64	044811	SCREW, 1/4-20X.75 HXWATAP	2
65	56907	COVER SEAT SPRING 1.51DX1.0LG	2
66	316303	FENDER	2
67	0095346	SCREW, 1/4-20X.50 WAHHTAP	1
68	0122017	SCREW, 5/16-18X1.00 HHC	4
69	0448363	WASHER, FLAT .375X.88X.082	2
70	01488	NUT, 5/16-18 REGHEXCTRLK	4
71	56021	TRIM, STRIP	2
72	313213	BRACKET, COVER	77.5"
73	314244	COVER PLASTIC LF HYDRO	1
74	0311331	SCREW, 1/4-15X.44/53 HILOHWA	1
75	1341	CLAMP SPRING 1.17"ID	2
76	0311331	SCREW, 1/4-15X.44/53 HILOHWA	2
77	318254	OPERATOR'S MANUAL (NOT ILLUSTRATED)	1
78	318252	PARTS MANUAL (NOT ILLUSTRATED)	1

◊ STANDARD HARDWARE ITEMS

43" TONDEUSE AUTOPORTEE MODELE B3560-500

ASSEMBLAGE EN DISPONIBILITE TONDEUSE



NOTE: ALWAYS USE ORIGINAL EQUIPMENT PARTS.
 Use of service/replacement parts other than original equipment parts may void your warranty.

ALL UNNUMBERED ITEMS ARE INTERCHANGABLE WITH OPPOSITE SIDE

315029E

43" TONDEUSE AUTOPORTEE MODELE B3560-500

key#	part#	description	qty.
1	9402	BRACKET,CLUT-ENGAGELEVER	1
2	180079	SCREW, 5/16-18X1.00 HHC	1
3	120393	WASHER, FLAT .344X.69X.066	2
4	1498	NUT, 5/16-18 REGHEXCTRLK	2
5	804781	ASSY,CLUTCH LEVER	1
6	80148	BEARING,FL. 5030X.6260D	1
7	8280	PIN, HAIR .061 DIA X1.66LG	1
8	318341	BRACKET,SWITCH ENGAGE	1
9	35498	SCREW, 5/16-18X.75 WASH TAP	1
10	1288	BRKT,CABLE RETAINER	1
11	39298	PULLEY, .906X.305 NYLON	1
12	58398	BOLT, .375X.375 HSSH 1/4-20	1
13	1502	NUT, 1/4-20 REGHEXCTRLK	1
14	9397	BRKT, FRAME CABLE	1
15	180020	SCREW, 1/4-20X.75 HHC	2
16	1502	NUT, 1/4-20 REGHEXCTRLK	2
17	801508	ASSY,CABLE, BLADE ENGAGE	1
18	120813	NUT, 1/4-28 HJAM	1
19	35488	SCREW, 5/16-18X.75 WASH TAP	1
20	87444	TIE, CABLE BLACK NYLON	1
21	9185	ASSY,REAR LIFT	1
22	9185	ASSY,LINK,RIGHT SIDE	1
23	180079	SCREW, 5/16-18X1.00 HHC	1
24	68247	ADJUSTING NUT	1
25	1498	NUT, 5/16-18 REGHEXCTRLK	1
26	120393	WASHER, FLAT .531X1.05X.090	2
27	8260	PIN, HAIR .061 DIA X1.66LG	2
28	9117	BRKT,REAR,HANG,SUSP.	2
29	126211	BOLT, 5/16-18X .65 CARR	4
30	1498	NUT, 5/16-18 REGHEXCTRLK	4
31	68333	BRACKET,HGT/ADJUST SUPPORT	1
32	180077	SCREW, 5/16-18X.75 HHC	3
33	1498	NUT, 5/16-18 REGHEXCTRLK	3
34	300338	BRACE, FENDER F-5 SUB	1
35	180079	SCREW, 5/16-18X1.00 HHC	1
36	45802	WASHER, FLAT .350X.67X.119	1
37	1498	NUT, 5/16-18 REGHEXCTRLK	1
38	180079	SCREW, 5/16-18X1.00 HHC	1
39	1498	NUT, 5/16-18 REGHEXCTRLK	1
40	301236	QUADRANT,HEIGHT ADJUST	1
41	180077	SCREW, 5/16-18X.75 HHC	2
42	1498	NUT, 5/16-18 REGHEXCTRLK	2
43	8788	HANDLE,LIFT SHORT BLK	1
44	300171	BOLT, .500X.270 HSSH 5/16-18	1
45	906418	WASHER, FLAT .506X.75X.024	1
46	44108	NUT, 5/16-18 HWDFLCTRLK	1
47	301236	PAWL, HEIGHT ADJUST	1
48	300171	BOLT, .500X.270 HSSH 5/16-18	1
49	44108	NUT, 5/16-18 HWDFLCTRLK	1
50	9435	POINTER Z-PL	1
51	138479	WASHER, EXLK.185X.41X.03	1
52	35287	SCREW, #8-32X.38 HHWAT	1
53	903027	ROD,ACTUATOR-SHORT	1
54	68326	SPRING, HEIGHT ADJUST	1
55	68326	KNOB, HGT ADJ PUSH BUTTON	1
56	58329	GRIP .750 OD W/HOLE	1
57	9149	BRKT, CABLE RETAIN	1
58	39298	PULLEY, .906X.305 NYLON	1
59	58398	BOLT, .375X.375 HSSH 1/4-20	1
60	1502	NUT, 1/4-20 REGHEXCTRLK	1
61	314177	CABLE, LIFT 29.30 F-5 20X8-8	1
62	300310	PIN,CLEVIS .310DIA+.475LG	1
63	900811	RING, RET E .31 X.24	1
64	120375	NUT, 1/4-20 REGHEX	1
65	8280	CLEVIS	1
66	439455	SCREW, 5/16-18X .66PHPNMA BKPH	1
67	301551	WASHER, .344ID X1.500X .08 CU BPH	1
68	120373	NUT, 5/16-18 SQ	1
69	39298	PULLEY, .906X.305 NYLON	1
70	300317	PIN, CLEVIS .38 DIA X1.00 LG	1
71	8260	PIN, HAIR .061 DIA X1.66LG	1
72	9405	CLEVIS, LIFT CABLE	1
73	120372	NUT, 1/4-20 REGSQ	1
74	30522	PIN,CLEVIS .312 X .312	1
75	121222	PIN, COTTER .690X.688X.76LG	1
76	300335	LIFT COVER-3P F5	1
77	300340	SCREW, #10 X.75 HHPLAST	3

◇ STANDARD HARDWARE ITEMS.

43" TONDEUSE AUTOPORTEE MODELE B3560-500

ASSEMBLAGE GOUVERNAIL

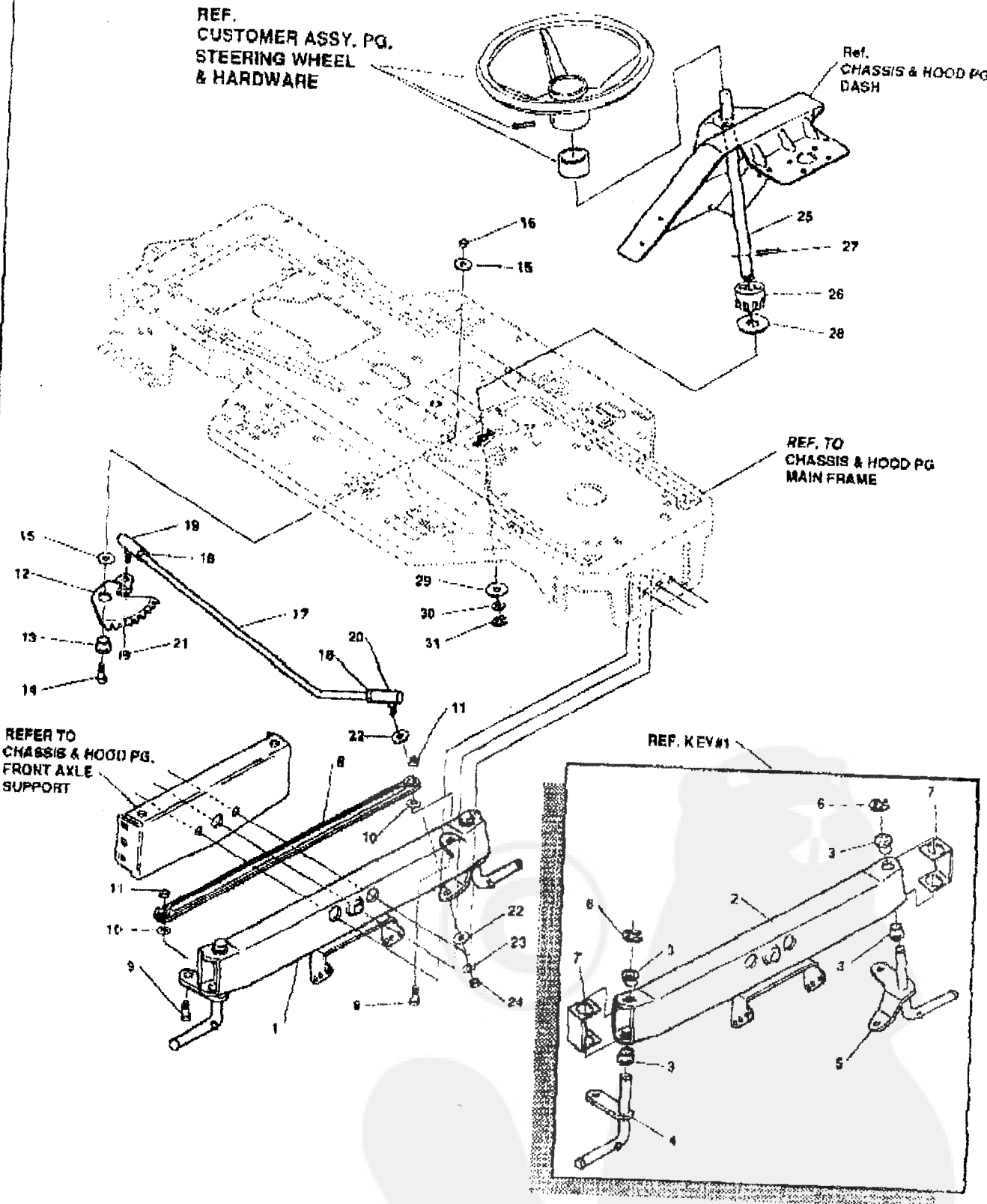
REF. CUSTOMER ASSY. PG. STEERING WHEEL & HARDWARE

Ref. CHASSIS & HOOD PG DASH

REF. TO CHASSIS & HOOD PG MAIN FRAME

REFER TO CHASSIS & HOOD PG. FRONT AXLE SUPPORT

REF. KEY#1



ALL UNNUMBERED ITEMS ARE INTERCHANGABLE WITH OPPOSITE SIDE

NOTE: ALWAYS USE ORIGINAL EQUIPMENT PARTS. Use of service/replacement parts other than original equipment parts may void your warranty.

31719A

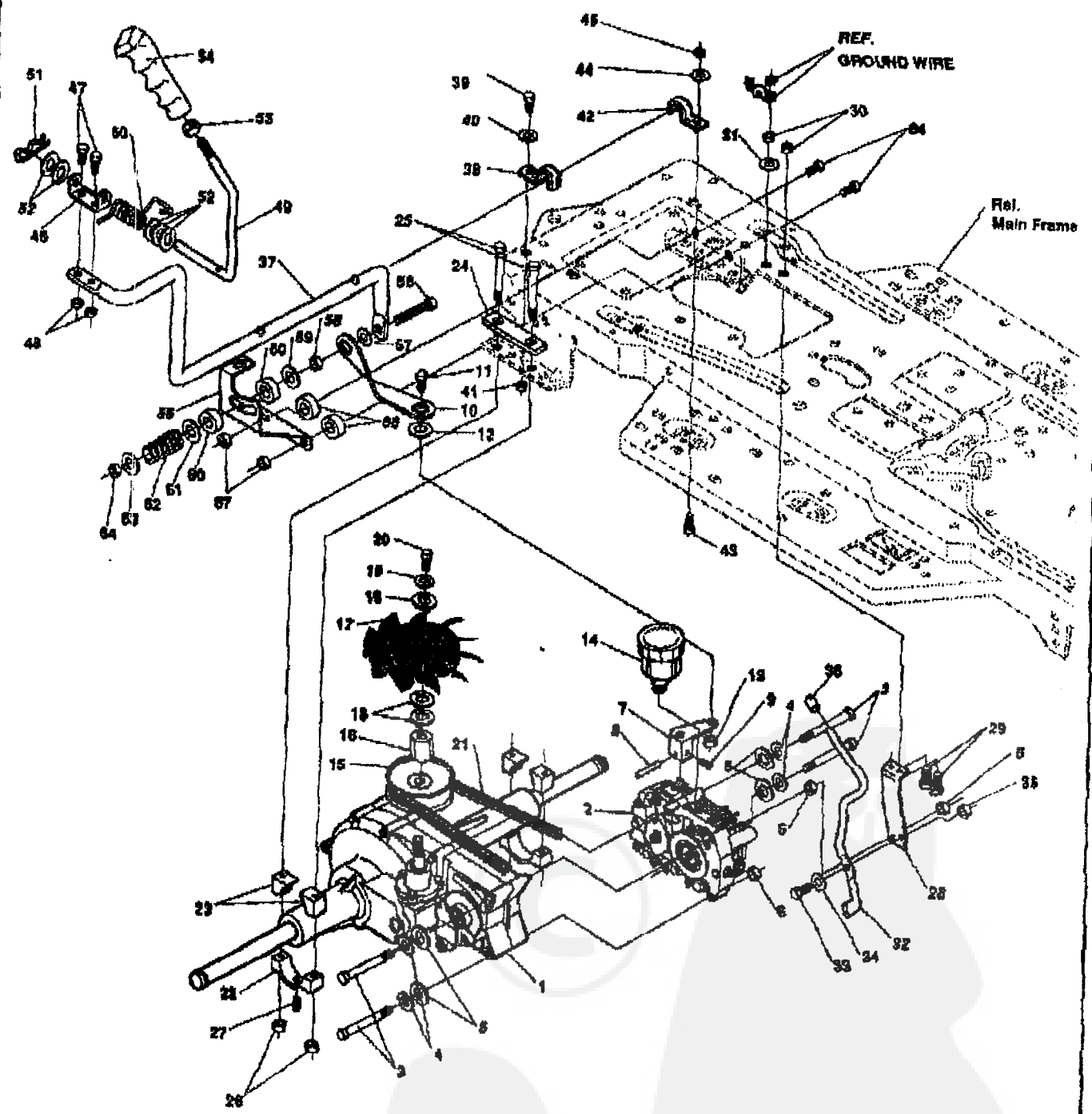
43" TONDEUSE AUTOPORTEE MODELE B3560-500

key#	part#	description	qty.
1	.	AXLE,FRONT ASSY SUB LF	1
2	300272	ASSY FRONT AXLE SUSPENDED	1
3	52407	SPINDLE BEARING	4
4	9180	ASSY,SPINDLE,RH	1
5	314088	ASSY,SPINDLE,LH	1
6	36825	RING, RETEX .57X.05TRU5133-75	2
7	53373	AXLE COVER	2
8	304590	TIE ROD ASSY 1B.81LG	1
9	0180120	SCREW, 3/8-18X1.75 HHC	2
10	120382	WASHER, REGSPTLK.393X.68X.10	2
11	01499	NUT, 3/8-16 REGHXCTRK	2
12	58289	SECTOR, STEERING LF	1
13	62406	BRNG, FL ECG.510IDX .988ODX .56	1
14	180177	SCREW, 1/2-13X1.50 HHC	1
15	22265	WASHER, FLAT .515X1.38X.119PL	2
16	01500	NUT, 1/2-13 REGHXCTRK	1
17	58291	STEERING LINK	1
18	0124925	NUT, 3/8-24 REGHEXJAM	2
19	57158	BALL JOINT 3/8 THD SHORT STUD	1
20	21275	BALL JOINT 3/8 THD LONG STUD	1
21	046692	NUT, 3/8-24 WDFLHLK WHIZ	1
22	0120396	WASHER, FLAT .591X1.06X.095	2
23	0120382	WASHER, REGSPTLK.393X.68X.10	1
24	0120369	NUT, 3/8-24 REGHEX	1
25	58243	SHAFT, STEERING LF	1
26	58244	PINION, STEERING LF	1
27	58274	PIN,DOWEL .2500 OD+1.75LG	1
28	301410	BRNG, FL .752IDX1.061ODX .24	1
29	301398	WASHER, FORMED1.135X1.53X.12	1
30	021682	WASHER, FLAT .765X1.25X.042	1
31	36525	RING, RETEX .57X.05TRU5133-75	1

0 Indicates STANDARD HARDWARE ITEMS.

43" TONDEUSE AUTOPORTEE MODELE B3560-500

ENTRAINEMENT ASSEMBLAGE



NOTE: ALWAYS USE ORIGINAL EQUIPMENT PARTS.
 Use of service/replacement parts other than original equipment parts may void your warranty.

ALL UNNUMBERED ITEMS ARE INTERCHANGABLE WITH OPPOSITE SIDE

315924L

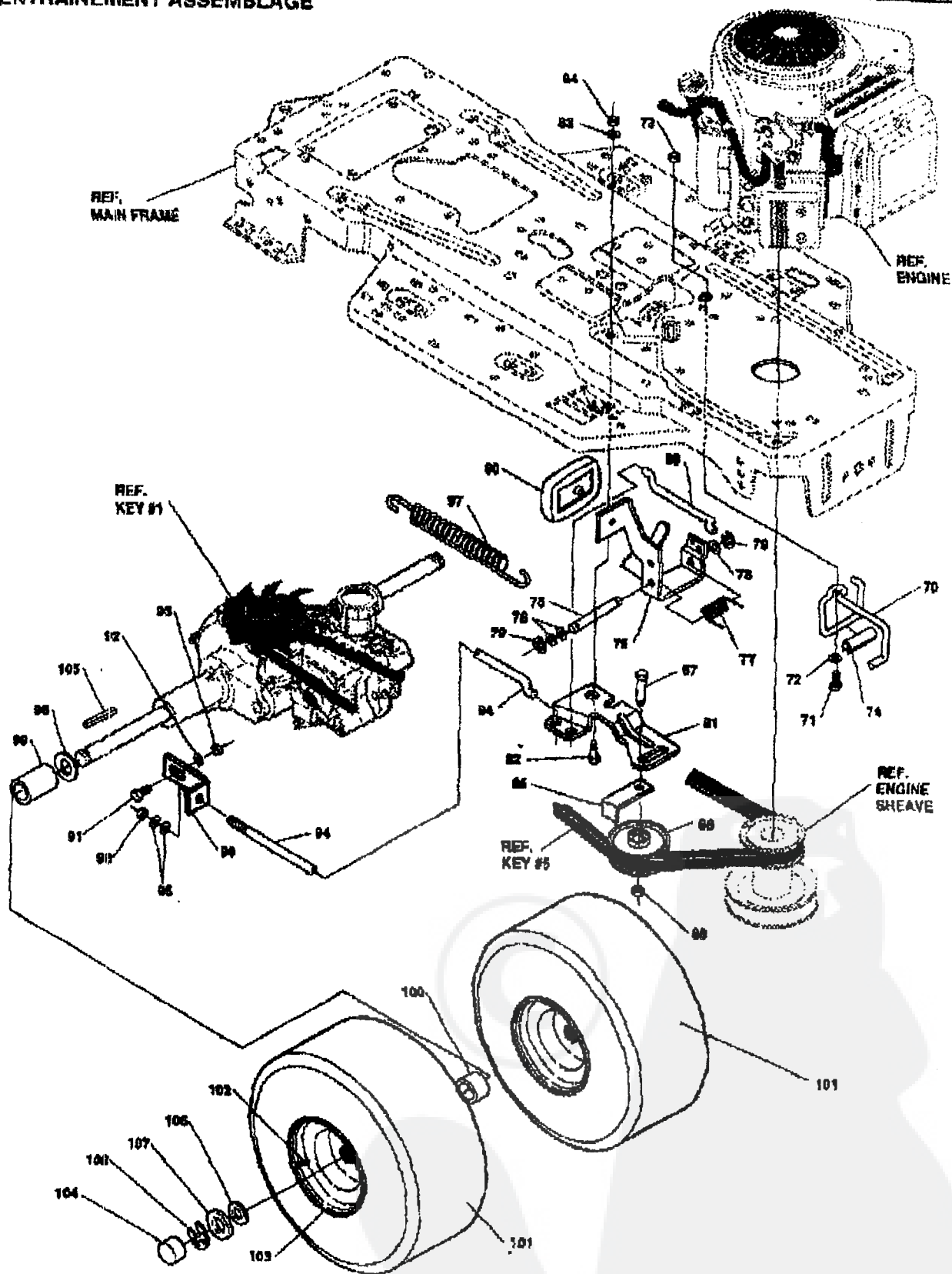
43" TONDEUSE AUTOPORTEE MODELE B3560-500

key#	part#	description	qty.
1	TRANSAXLE	AGRI/FAB HYDRO (CONTACT NEAREST DEALER)	1
2	310227	HYDROSTATIC PUMP BDU-10S-114	1
3	o 189299	SCREW, 5/16-18X4.50 HHC	4
4	o 120538	WASHER, HVSP T LK .328X.80X.09	4
5	o 120393	WASHER, FLAT .344X.68X.085	4
6	o 1498	NUT, 5/16-18 REGHEXCTRLK	3
7	310180	ARM SPEED CONTROL HYDRO	1
8	456852	PIN, SPRING.187DIA X .89LG	1
9	o 102570	SCREW, 1/4-20X .38 ALH8ETCPPT	1
10	314236	LINK, SHIFT LF HYDRO	1
11	o 122145	SCREW, 3/8-16X1.25 HHC	1
12	o 120382	WASHER, REGSPLTLK .393X.88X.10	1
13	o 1499	NUT, 3/8-16 REGHXCTRLK	1
14	310788	RESERVIOR, HYDRO	1
15	810098	PULLEY ASSY HYDRO	1
16	310094	NUT PULLEY 1/2-20 AND 1/4-20	1
17	308628	FAN, HYDRO 7.00DIA-10 BLADES	1
18	o 908492	WASHER, FLAT .28X1.38X.07	3
19	o 120380	WASHER, REGSPLTLK.282X.49X.07	1
20	o 180018	SCREW, 1/4-20X .82 HHC	1
21	314572	BELT, V 4L 60.16 HYDRO LF	1
22	310197	MOUNTING BLOCKS HYDRO	2
23	310813	MOUNTING BLOCK LH HYDRO	4
24	313371	PLATE GUIDE	2
25	o 180112	SCREW, 5/16-18X2.25 HHC	4
26	o 1498	NUT, 5/16-18 REGHEXCTRLK	4
27	140880	SCREW, 10-32X .25 ALSETCUPT	2
28	314221	STABILIZER BRACKET LF HYDRO	1
29	o 122017	SCREW, 5/16-18X1.00 HHC	2
30	o 1498	NUT, 5/16-18 REGHEXCTRLK	2
31	138638	WASHER, REGINLK .320X.81X.03	1
32	314222	ROD-DUMP VALVE LF HYD.ZINC	1
33	810088	BOLT, .250X .312 HSSH 5/16-18	1
34	o 2483	WASHER, .391DX1.25DX.07 BELLVIL	1
35	o 1502	NUT, 1/4-20 REGHEXCTRLK	1
36	7289	RUBBER STOP	1
37	319115	LEVER, SHIFT-LWR LF HYDRO	1
38	310348	CLIP-SHIFT LEVER .82 ROD	1
39	o 180077	SCREW, 5/16-18X .75 HHC	1
40	o 998416	WASHER, FLAT .381X1.00X.125	1
41	o 1498	NUT, 5/16-18 REGHEXCTRLK	1
42	310348	CLIP-SHIFT LEVER .82 ROD	1
43	180077	SCREW, 5/16-18 REGHEXCTRLK	1
44	o 998416	WASHER, FLAT .391X1.00X.125	1
45	o 1498	NUT, 5/16-18 REGHEXCTRLK	1
46	310358	PIVOT BRKT LEVER BLACK	1
47	o 180018	SCREW, 1/4-20X .82 HHC	2
48	o 1502	NUT, 1/4-20 REGHEXCTRLK	2
49	318452	LEVER, SHIFT UPPER SF 1/2-13TH	1
50	318451	SPRING, TORS. .86X.95X.095	1
51	8250	PIN, HAIR .125 DIA X 1.00LG	1
52	2968	WASHER	5
53	o 120238	NUT, 1/2-13 HEXJAM	1
54	308680	HANDLE 1/2-13 MOLDED BLACK 173	1
55	315308	QUADRANT, SPEED CONTROL	1
56	7288	SCREW, 3/8-16X3.00 HHCFT	1
57	120382	WASHER, REGSPLTLK .393-16X3.00	1
58	o 45171	NUT, 3/8-16 HWDFL WHIZ NUT	1
59	o 846	WASHER, FLAT .390X1.25X.119	1
60	314844	WASHER, FRICTION	2
61	o 845	WASHER, FLAT .390X1.25X.119	1
62	29170	SPRING	1
63	o 274517	WASHER, FLAT .406X.73X.089	1
64	o 1499	NUT, 3/8-16 REGHXCTRLK	1
65	o 180081	SCREW, 5/16-18X1.50 HHC	2
66	314702	SPACER .344 X 1.00 X .500	2
67	o 1498	NUT, 5/16-18 REGHEXCTRLK	2

o Indicates STANDARD HARDWARE ITEMS.

43" TONDEUSE AUTOPORTEE MODELE B3560-500

ENTRAINEMENT ASSEMBLAGE



NOTE: ALWAYS USE ORIGINAL EQUIPMENT PARTS.
 Use of service/replacement parts other than original equipment parts may void your warranty.

ALL UNNUMBERED ITEMS ARE INTERCHANGABLE WITH OPPOSITE SIDE

316924F

43" TONDEUSE AUTOPORTEE MODELE B3560-500

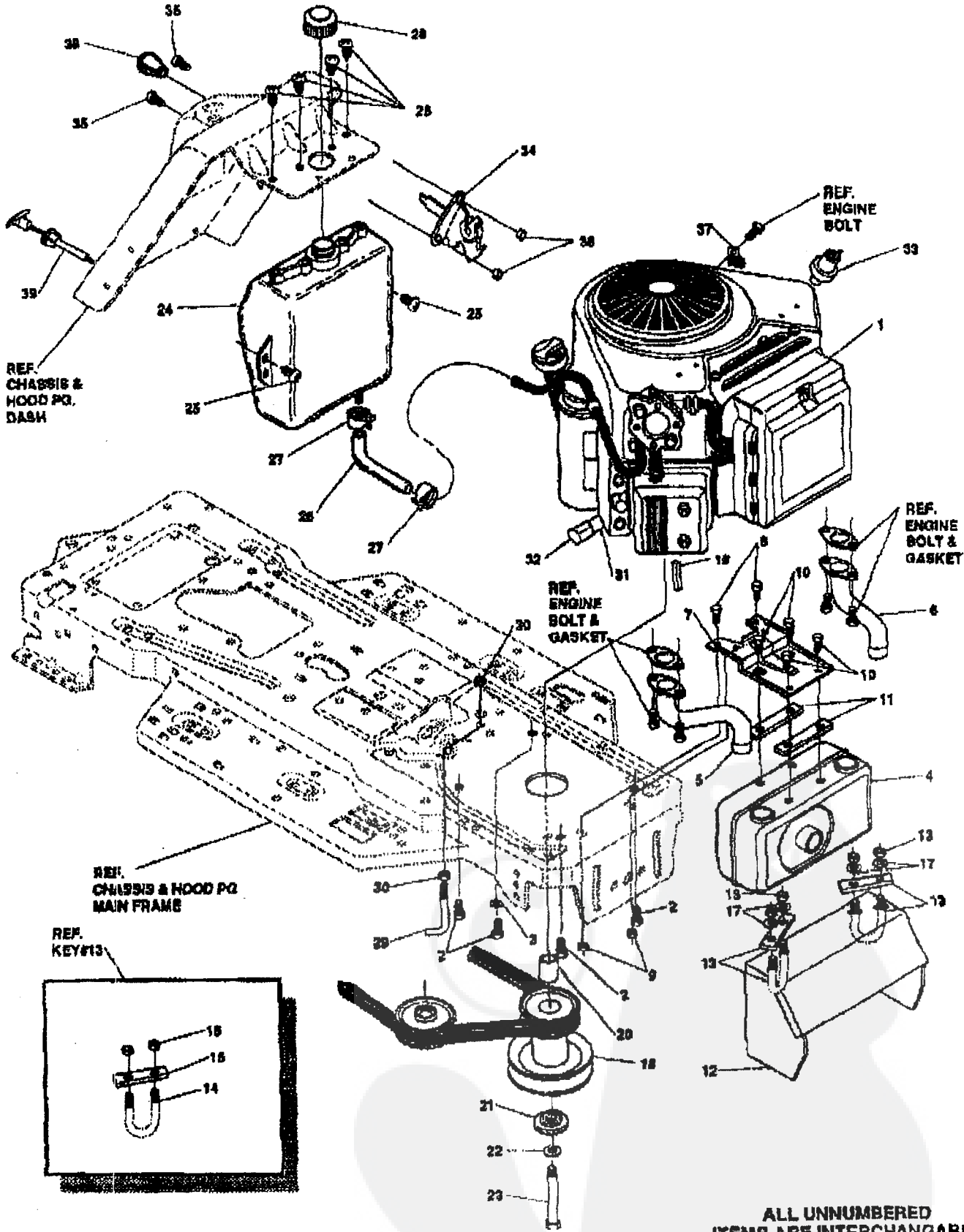
key#	part#	description	qty.
70	56356	GUIDE-BELT/DRAGLINK	1
71	◊ 160079	SCREW, 5/16-18X1.00 HHC	1
72	◊ 45602	WASHER, FLAT .333X .87X.118	1
73	◊ 1498	NUT, 5/16-18 REGHEXCTRLK	1
74	303278	PLASTIC EXTRUSION-BELT GUIDE	1
75	300308	PEDAL ASSY.BRAKE/CLUTCH LF	1
76	57196	ROD,PIVOT	1
77	57847	SPRING, BRAKE PEDAL	1
78	◊ 2668	WASHER, FLAT .504X .75X.059	3
79	20664	RING, RET E .39X.04TRU5133-50	2
80	48160	PAD, CLUTCH BRAKE W/PRINTING	1
81	300154	ARM, IDLER TRACTION DR. LF	1
82	300793	BOLT, .625X .135 HSSH 5/16-18	1
83	◊ 45602	WASHER, FLAT .333X .87X.118	1
84	◊ 1498	NUT, 5/16-18 REGHEXCTRLK	1
85	39659	RETAINER, STRAP BELT	1
86	35374	PULLEY, IDLER V4L 3.06X .62	1
87	45892	BOLT, 3/8-16X1.50 CARR	1
88	◊ 1499	NUT, 3/8-16 REGHXCTRLK	1
89	57204	ROD, CLUTCH	1
90	67217	BRACKET, BRAKE ROD	1
91	20607	BOLT, .437X .156 HSSH 5/16-18	1
92	◊ 45602	WASHER, FLAT .333X .87X.118	1
93	◊ 1499	NUT, 5/16-18 REGHEXCTRLK	1
94	316293	ROD, BRAKE LT 920 LF 22.25	1
95	◊120393	WASHER, FLAT .344X.69X.086	2
96	◊ 1498	NUT, 5/16-18 REGHEXCTRLK	1
97	56359	SPRING, CLUTCH .113X.750X8.75	1
98	◊ 42815	WASHER, FLAT .755X1.53X.07	2
99	57479	SPACER, .75 X 1.25 X 1.32	2
100	301565	SPACER, SLEEVE	2
101	65893	TIRE	2
102	24167	VALVE STEM	1
103	301366	RIM, WHEEL	1
104	40394	CAP, HUB	2
105	52928	KEY, SQUARE .1875QX2.25LG	2
106	◊ 842	WASHER, FLAT .755X1.31X.075	4
107	◊ 42815	WASHER, FLAT .755X1.53X.07	2
108	36625	RING, RETEX .57X.05TRU5133-75	2

* Raw part number. For a list of Painted part numbers refer to chart on decal page.

◊ Indicates STANDARD HARDWARE ITEMS.

43" TONDEUSE AUTOPORTEE MODELE B3580-500

MOTEUR ET COMMANDE ASSEMBLAGE



NOTE: ALWAYS USE ORIGINAL EQUIPMENT PARTS. Use of service/replacement parts other than original equipment parts may void your warranty.

ALL UNNUMBERED ITEMS ARE INTERCHANGABLE WITH OPPOSITE SIDE

315005B

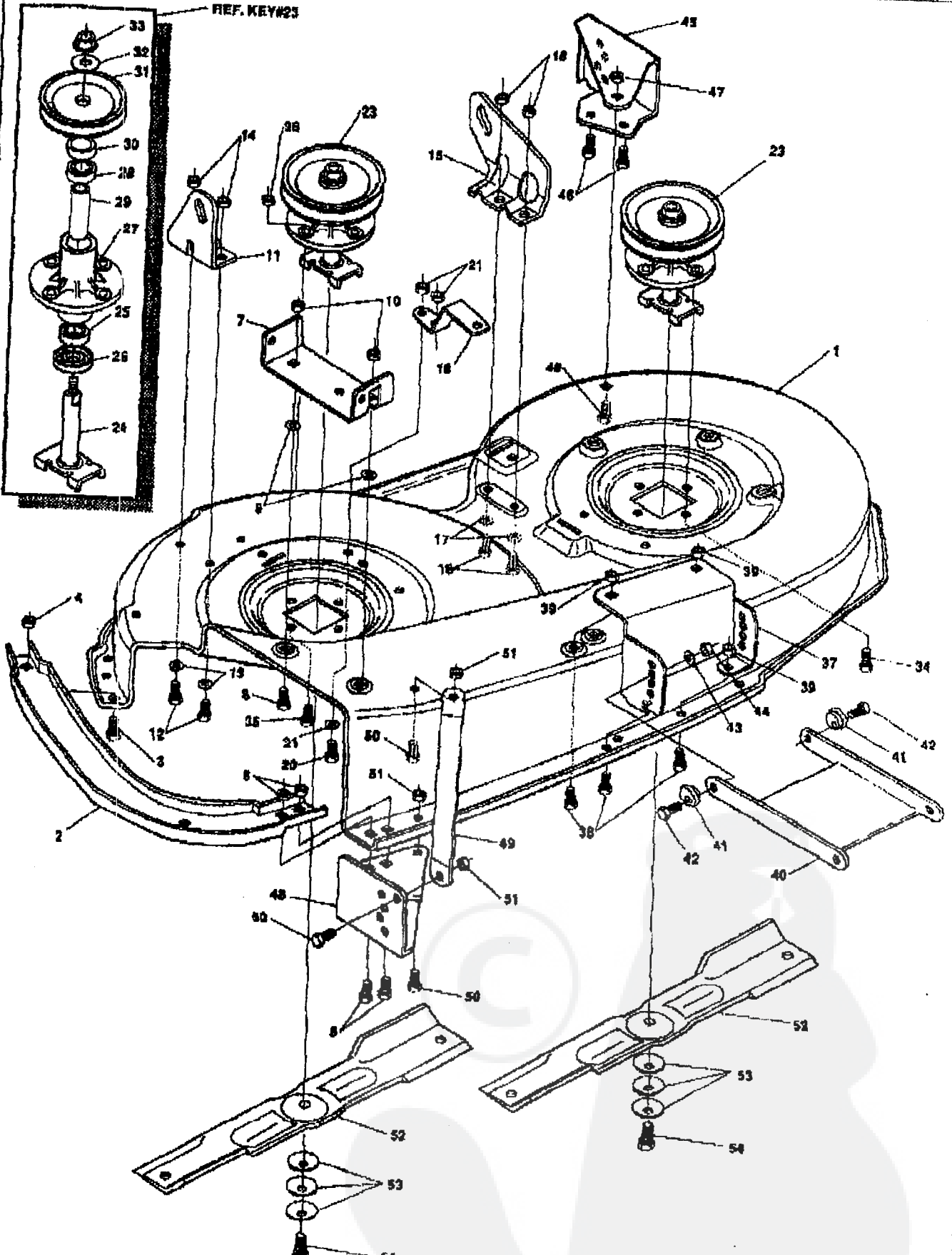
43" TONDEUSE AUTOPORTEE MODELE B3560-500

key#	part#	description	qty.
1	315601	(2)ENGINE,15HP BS V/TWIN 16AMP	1
2	50947	SCREW, 3/8-16X1.25 W/HTAP	4
3	139489	WASHER, EXLK, 3/8X.69X.04	1
4	316342	MUFFLER 15HP B&S VANG H10/G13	1
5	316346	EXHAUST TUBE ASM. RH	1
6	316347	EXHAUST TUBE ASM. LH	1
7	306577	BRACKET, MUFFLER	1
8	56030	SCREW, 5/16-18X.75WDFLLK GR5	2
9	55273	NUT, 5/16-18 HXWDFLLK	2
10	44811	SCREW, 1/4-20X .75 HXWATAP	4
11	313370	PLATE,GUIDE	2
12	317321	HEAT SHIELD,MUFFLER	1
13	317634	U-BOLT & PLATE ASSY	1
14	317236	U-BOLT 1/4-20 X 1.0 X 1.75	1
15	317337	PLATE, U-BOLT	1
16	0120675	NUT, 1/4-20 REGHEX	2
17	120380	WASHER, REGSPTLK.283X.49X.07	4
18	318802	PULLEY,ENG 4.400FF/5.000/3.000	1
19	57791	KEY, SQUARE .2500X5.00LG	1
20	304246	SPACER, 1.01X1.484 ENGIN PULLEY	1
21	56431	WASHER, 3/8ODX1.38ODX.437PILOT	1
22	120363	WASHER, REGSPTLK.459X.78X.12	1
23	428844	SCREW, 7/16-20X5.00 HHC	1
24	314992	TANK,FUEL 2GAL CLEAR	1
25	49050	SCREW, 1/4-10X .75PHPNTAPGR2	6
26	47452	GAS LINE 26ID BULK LENGTH	10'
27	48572	CLAMP, FUEL LINE	2
28	48704	GAS CAP 1-1/2-7 THD	1
29	301713	ROD, UPSTOP	1
30	45171	NUT, 3/8-16 HWDFL WHIZ-LOCK ZN	2
31	307174	NIPPLE 3/8-18 NPT X 4"	1
32	47828	CAP, PIPE 3/8-18 NPT	1
33	314797	OIL SENSOR, B&S TWIN CYL.	1
34	310280	CONTROL,THROTTLE 33.5LG B&S VAN	1
35	159943	SCREW, 10-24X .63PHPNMA GR2BK	2
36	271165	NUT, #10-24 HEXKEPS	2
37	57569	RETAINER, 311DX.62X.03 WIRE	1
38	50607	KNOB,ROUND THROTTLE	1
39	310279	CONTROL,CHOKE 35.25LG	1

0 Indicates STANDARD HARDWARE ITEMS.

CARRIER DE COUPE ASSEMBLAGE

REF. KEY#23



NOTE: ALWAYS USE ORIGINAL EQUIPMENT PARTS. Use of service/replacement parts other than original equipment parts may void your warranty.

ALL UNNUMBERED ITEMS ARE INTERCHANGABLE WITH OPPOSITE SIDE

315657D

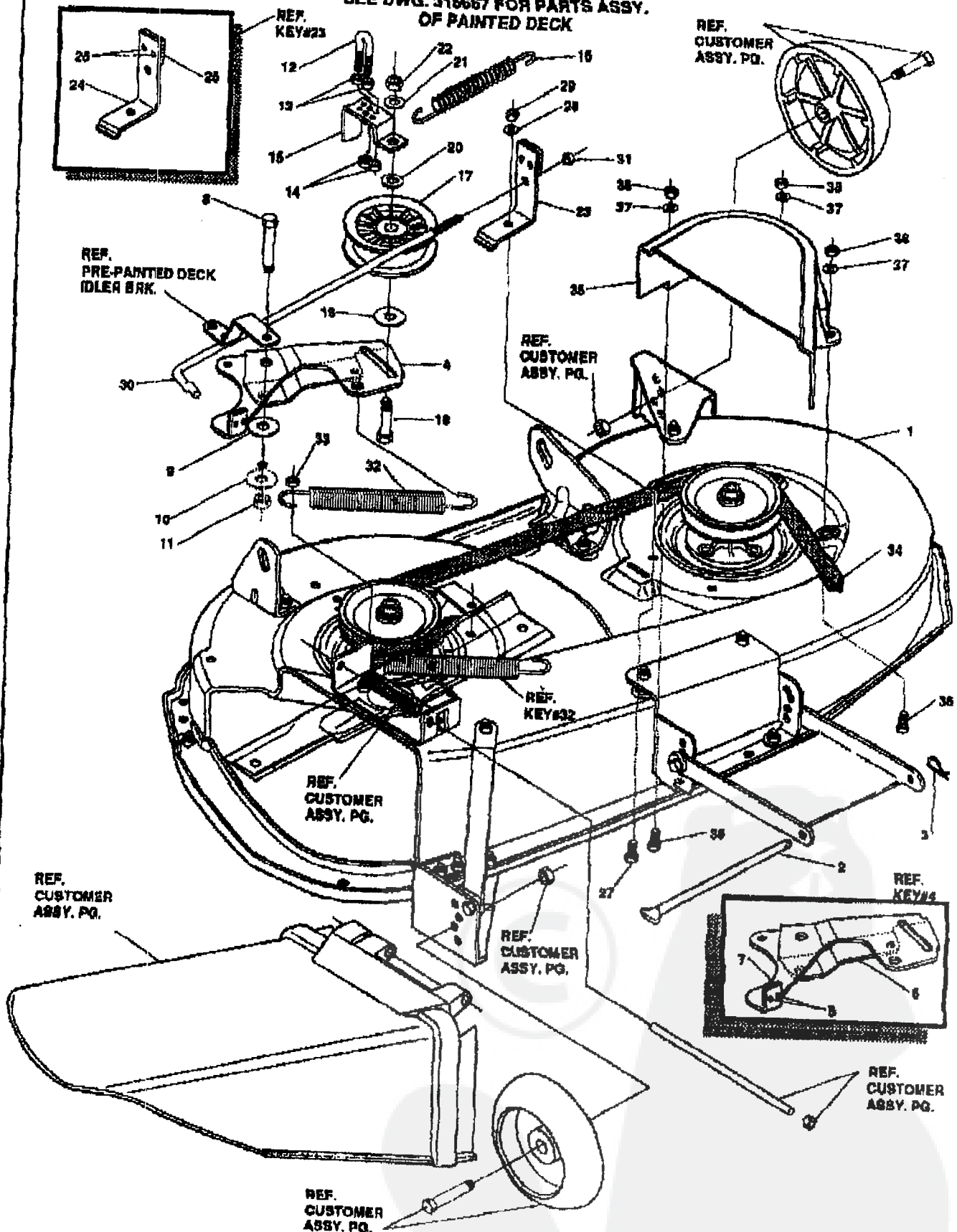
43" TONDEUSE AUTOPORTEE MODELE B3560-500

key#	part#	description	qty.
1	317039	MOWER DECKS, RIDER 43"	1
2	304102	TOE GUARD	1
3	180075	SCREW, 5/16-18X .63 HHC	1
4	1498	NUT, 5/16-18 REGHEXCTRLK	1
5	122007	SCREW, 5/16-18X .75 HHC	2
6	1498	NUT, 5/16-18 REGHEXCTRLK	2
7	302364	BRACKET CHUTE MOUNT	1
8	180075	SCREW, 5/16-18X .63 HHC	2
9	120393	WASHER, FLAT .344X .69X .065	2
10	1498	NUT, 5/16-18 REGHEXCTRLK	2
11	58250	LIFT BRACKET, REAR, RH	1
12	180077	SCREW, 5/16-18X .75 HHC	2
13	120393	WASHER, FLAT .344X .69X .065	2
14	1498	NUT, 5/16-18 REGHEXCTRLK	2
15	58251	BRACKET, DECK LIFT REAR LH	1
16	180077	SCREW, 5/16-18X .75 HHC GR6	2
17	120393	WASHER, FLAT .344X .69X .065	2
18	1498	NUT, 5/16-18 REGHEXCTRLK	2
19	302363	BRACE IDLER	1
20	180077	SCREW, 5/16-18X .75 HHC	2
21	120393	WASHER, FLAT .344X .69X .065	2
22	44108	NUT, 5/16-18 HWDFLCTRLK	2
23	58424	QUILL ASSY, 36/39/40/43	2
24	58425	SHAFT/SADDLE 36"	1
25	49562	BRNG, BALL	1
26	50816	DUST SHIELD	1
27	56547	QUILL CASTING (1046)	1
28	49562	BRNG, BALL	1
29	50818	SPACER, 3.797LGX .669IDX .880D	1
30	51449	SPACER, .498LGX .932ODX .672ID	1
31	58390	PULLEY, 26/36" QUILL V5L	1
32	58885	SPECIAL WASHER	1
33	1282	NUT, 7/16-20 WDFLLK	1
34	60634	SCREW, 5/16-18X .88 WAHHTAP	7
35	300345	SCREW, 5/16-18X1.38 WATAP	1
36	1498	NUT, 5/16-18 REGHEXCTRLK	1
37	315778	BRACKET FRNT.	1
38	180075	SCREW, 5/16-18X .63 HHC	4
39	1498	NUT, 5/16-18 REGHEXCTRLK	4
40	58305	LINK BRACKET, DECK FR	1
41	58247	ADJUSTING NUT	2
42	122017	SCREW, 5/16-18X1.00 HHC	2
43	35214	WASHER, FLAT .329X1.06X.062	2
44	1498	NUT, 5/16-18 REGHEXCTRLK	2
45	304426	BRACKET, GAGE WHEEL L.H.	1
46	180075	SCREW, 5/16-18X .63 HHC	3
47	1498	NUT, 5/16-18 REGHEXCTRLK	3
48	313925	BRACKET, GAGE WHEEL R.H. FRNT	1
49	314292	BRACKET, STABILIZER	1
50	180075	SCREW, 5/16-18X .63 HHC	3
51	1498	NUT, 5/16-18 REGHEXCTRLK	3
52	314369	BLADE, 43" STD-LIFT 21.70	2
53	2483	WASHER, .90IDX1.25DX.07 BELLVIL	6
54	39573	SCREW, 3/8-24X1.00 NYLHHC	2

Part No. 316252

CARTER DE COUPE ASSEMBLAGE

SEE DWG. 318667 FOR PARTS ASSY. OF PAINTED DECK



NOTE: ALWAYS USE ORIGINAL EQUIPMENT PARTS.
Use of service/replacement parts other than original equipment parts may void your warranty.

ALL UNNUMBERED ITEMS ARE INTERCHANGABLE WITH OPPOSITE SIDE

315596B

Part No. 318252

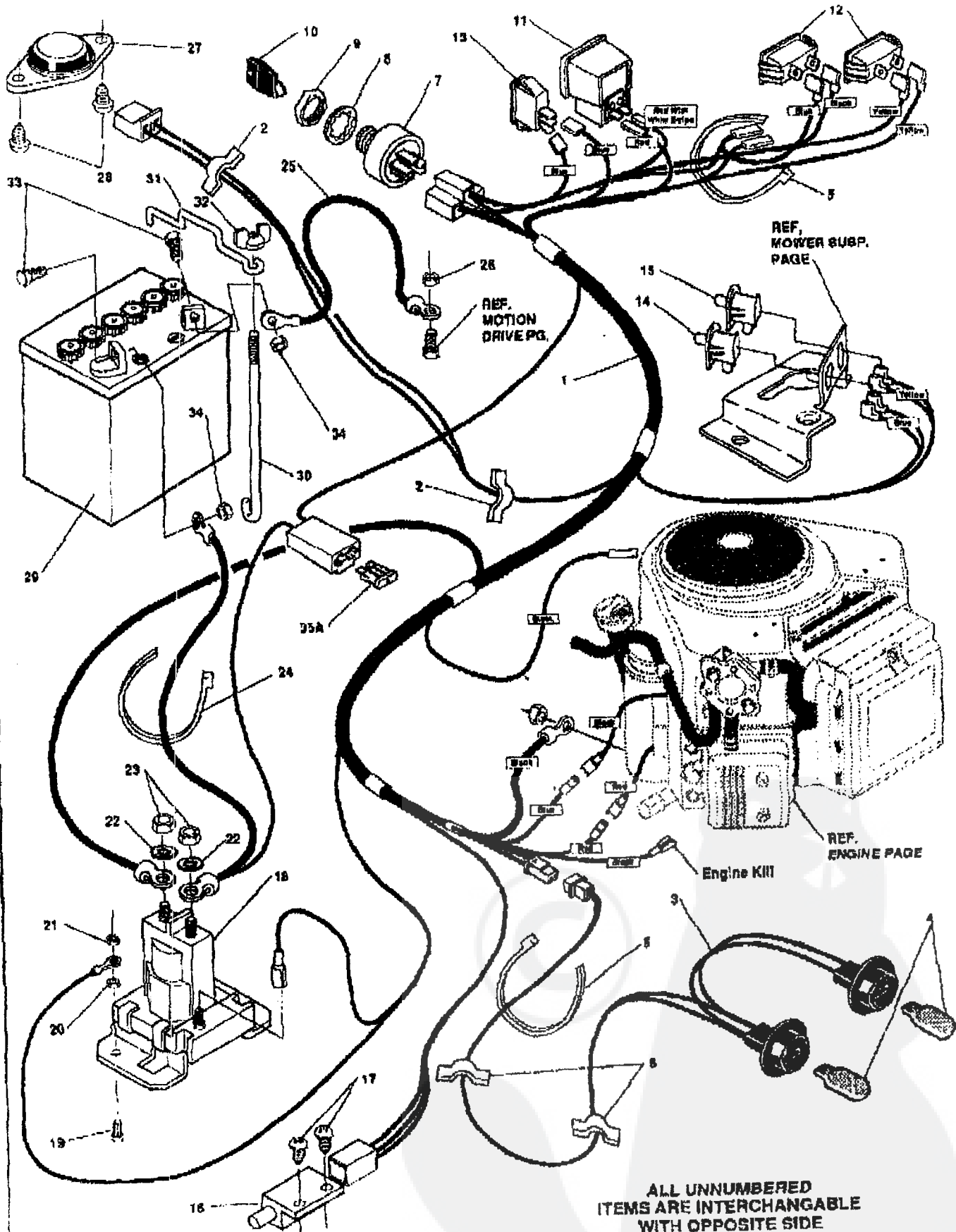
MODEL REPORTEE MODELE B3560-500

key#	part#	description	qty.
1	*		
2	58306	DECK, 43" MOWER ASSEMBLY	1
3	8280	ROD, DECK HITCH	1
4	904414	PIN, HAIR .001 DIA X 1.66 LG	1
5	41801	ASSY, IDLER ARM	1
6	306298	RIVET, CVSET .187 DIA X .50 LG ST	2
7	306973	ARM, IDLER	1
8	304420	BRAKE PAD	1
9	0996307	BOLT, .500 X 2.15 HX HDCPSH	1
10	0996416	WASHER, FLAT .391 X 1.00 X .209	1
11	045171	WASHER, FLAT .391 X 1.00 X .125	2
12	317308	NUT, 3/8-16 HWDFL WHIZ-LOCK	1
13	0271188	U-BOLT 10-24 X .30 X .85	1
14	0997316	NUT, #10-24 HEXKEPS	2
15	315879	NUT, #10-24 REGHEXCTRLK	1
16	314107	GUIDE, BELT, IDLER	1
17	310328	SPRING, TENSION 5.00 LG + 17 LB IN	1
18	26210	PULLEY, IDLER BFF 4.00 WIDE FL	1
19	57325	WASHER, FLAT .392 X 1.25 X .09	1
20	0996307	BOLT, 3/8-16 X 2.00 CARR	1
21	0120382	WASHER, FLAT .391 X 1.00 X .209	1
22	0120377	WASHER, REGSPTLK .392 X .88 X .10	1
23	304118	NUT, 3/8-16 REGHX	1
24	308241	BLADE BRAKE ASSY.	1
25	306973	BRAKE ARM	1
26	185824	BRAKE PAD	1
27	0120228	RIVET, TRSET .185 DIA X .41 LG ST	2
28	120393	SCREW, 5/16-18 X .69 HHC	1
29	01498	WASHER, FLAT .344 X .69 X .085	1
30	314079	NUT, 5/16-18 REGHEXCTRLK	1
31	01502	ROD, BRAKE	1
32	35410	NUT, 1/4-20 REGHEXCTRLK	1
33	01498	SPRING .071 X .82 X 4.37	1
34	318372	NUT, 5/16-18 REGHEXCTRLK	1
35	314108	BELT, V 5L 85.00 KEVLAR	1
36	0120228	GUARD, BELT LH PLASTIC	1
37	0120393	SCREW, 5/16-18 X .68 HHC	3
38	01498	WASHER, FLAT .344 X .69 X .065	3
		NUT, 5/16-18 REGHEXCTRLK	3

* Order Individual Parts.
 STANDARD HARDWARE ITEMS

Part No. 318252

ASSEMBLAGE ELECTRIQUE



NOTE: ALWAYS USE ORIGINAL EQUIPMENT PARTS.
 Use of service/replacement parts other than original equipment parts may void your warranty

ALL UNNUMBERED ITEMS ARE INTERCHANGABLE WITH OPPOSITE SIDE

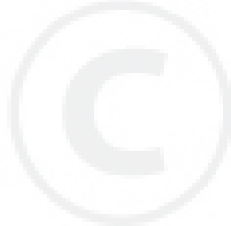
315985A

Part No. 318252

43" TONDEUSE AUTOPORTEE MODELE B3560-500

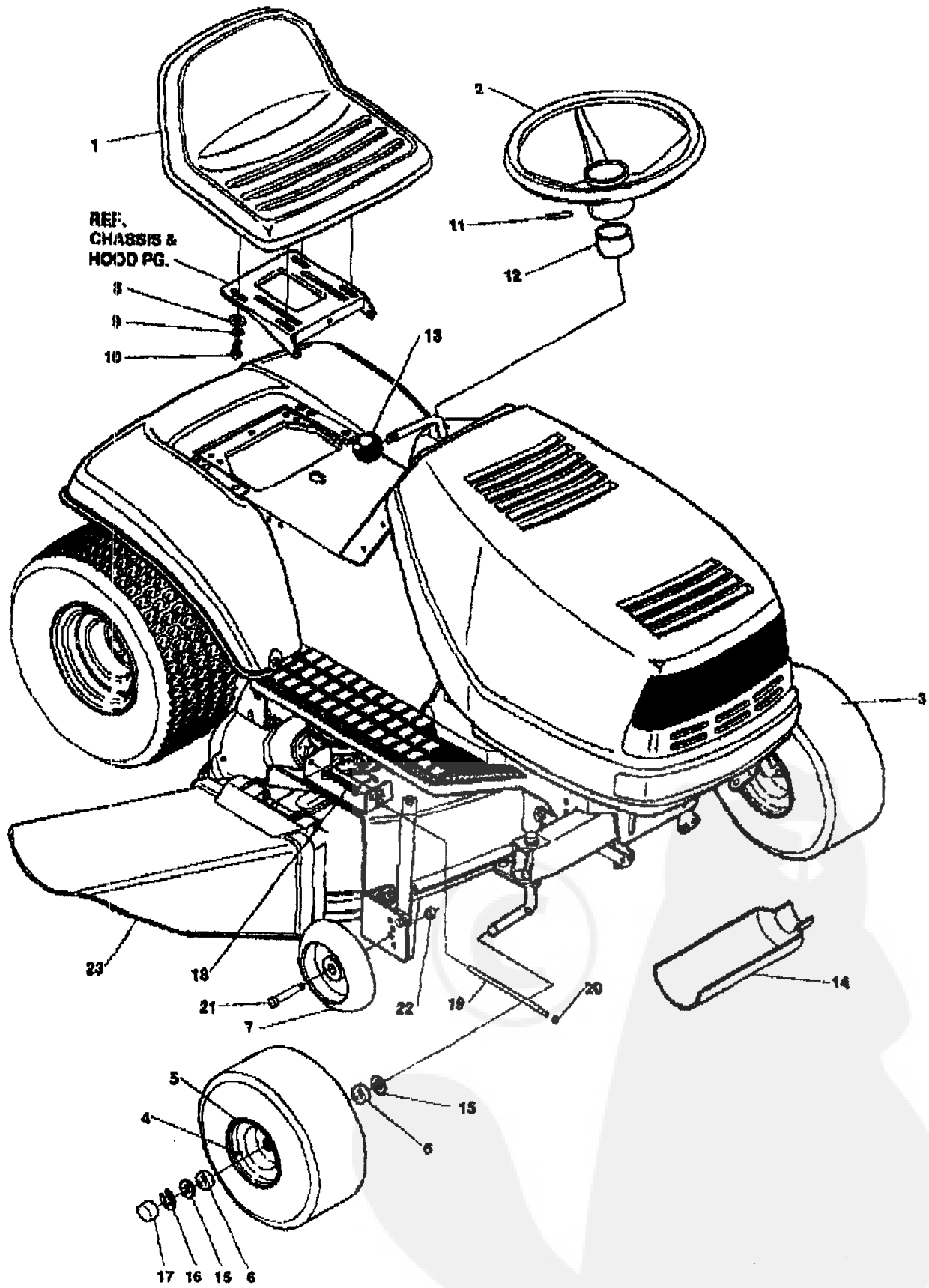
key#	part#	description	qty
1	317097	WIRE, HARNESS HYDRO NEUTRAL SAFETY	1
2	41482	CLIP, 1.380LG .255ID PRESS WIRE	2
3	303004	ASSY, LIGHT WIRE-1/4 TURN	1
4	52572	BULB, HEADLAMP	2
5	57444	TIE, CABLE BLACK NYLON 5.62L	1
6	41482	CLIP, 1.380LG .255ID PRESS WIRE	2
7	305720	SWITCH-IGN.(AFTER FIRE) 3 POSN	2
8	0138557	WASHER, REGINTLK.640X1.1X.05	1
9	048140	NUT, 5/8-32 HXHD IGN SWIT	1
10	300626	KEY, IGNITION SWITCH	1
11	300133	AMMETER, PANEL MOUNT	1
12	300255	LIGHT, INDICATOR PANEL MNT	1
13	300334	LIGHT SWITCH ON/OFF PANEL MNT	2
14	300220	SWITCH, SNAPMNT NO .055/ .116	1
15	58277	SWITCH, SNAPMNT NO .055/ .186	1
16	57476	SWITCH, SCR MNT	1
17	057220	SCREW, #12 X .50 PHPNHTAP	1
18	53716	SOLENOID, NEW CLUM	2
19	0187745	SCREW, 1/4-20X .75 HXSEMMA	1
20	01502	NUT, 1/4-20 REGHEXCTRLK	2
21	0271172	NUT, 1/4-20 REGHEXKEPS	2
22	138485	WASHER, EXLK .320X.61X.03	1
23	0120368	NUT, 5/16-24 REGHEX	2
24	57444	TIE, CABLE BLACK NYLON 5.62	2
25	55511	WIRE, GROUND, 12.5"	1
26	0271184	NUT, 5/16-18 HEXKEPS	1
27	57547	SWITCH, SEAT	1
28	0160805	SCREW, 1/4-20X .38PHPNHMA	1
29	302257	BATTERY	2
30	57551	LIFT CABLE 20.75LG	1
31	57552	ROD, BATTERY, TOP	1
32	310067	NUT, WING 1/4-20 SMALL PLASTIC	1
33	0120854	SCREW, 1/4-20X .63 HHC	1
34	0271172	NUT, 1/4-20 REGHEXKEPS	2
35A	0**302031	Fuse, 15 amp Spade Type	2
35B	0**49211	Fuse, 15 amp Cylindrical Type	1

**Cylindrical or Spade type fuses are included with the wire harness.
 ◊ Indicates STANDARD HARDWARE ITEMS.



43" TONDEUSE AUTOPORTEE MODELE B3560-500

CHALAND ASSEMBLAGE



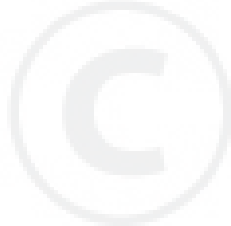
318175A

43" TONDEUSE AUTOPORTEE MODELE B3560-500

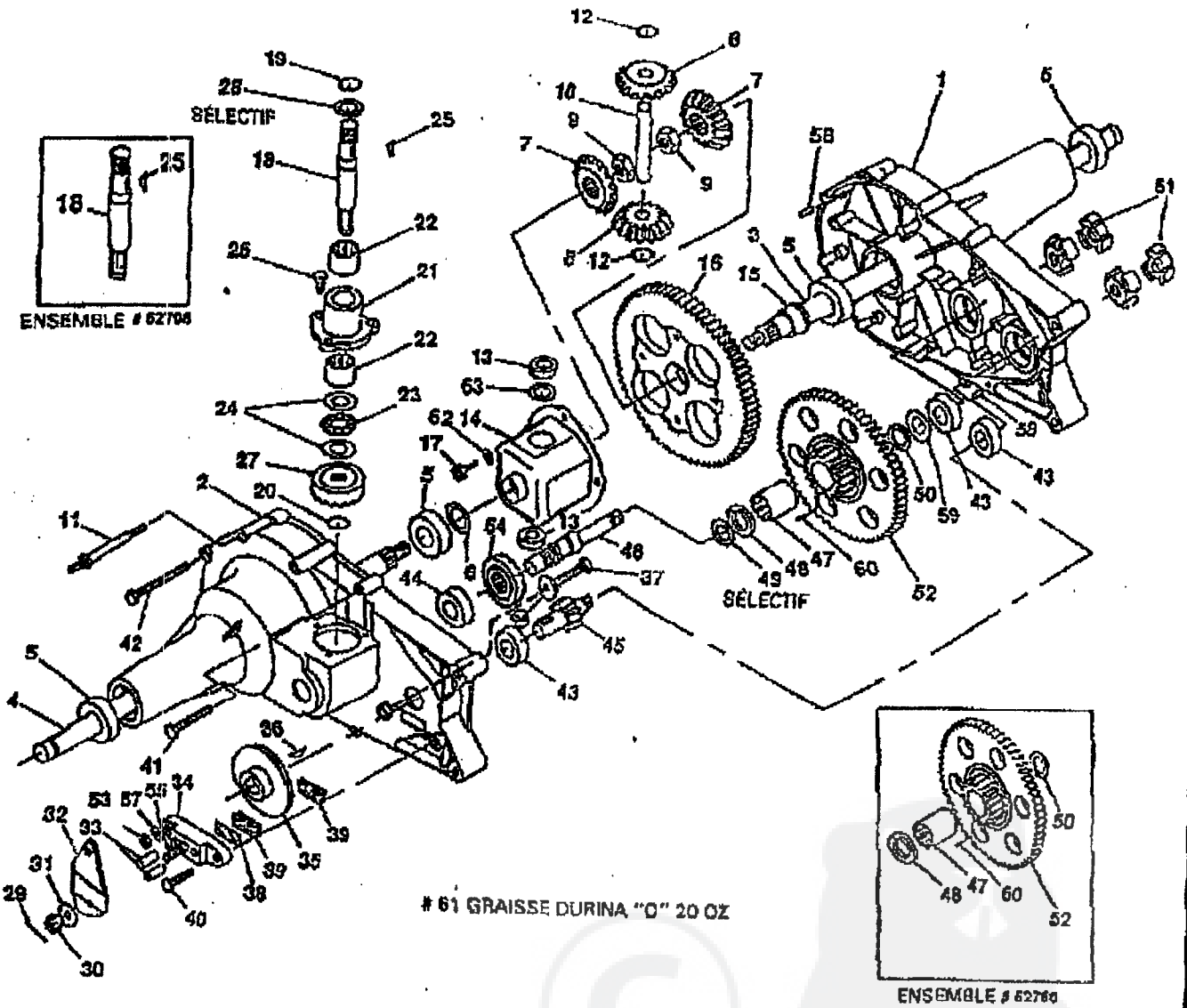
CUSTOMER ASSEMBLY VIEW

317355 PARTS BAG ASSY QTY1

key#	part#	description	qty
1	307001	SEAT MV640	
2	301251	STEERING WHEEL 19" STD	1
3	301140	TIRE 15X8-5 WHITE	1
4	24167	VALVE STEM	2
5	38829	WHEEL W/BEARINGS	1
6	38979	BEARINGS	1
7	302911	DECK WHEEL	2
8	120383	WASHER, FLAT .344X.69X.065	2
9	120838	WASHER, HVSP TLK .328X.80X.09	4
10	122007	SCREW, 5/16-18X.75 HHC	4
11	456378	PIN, SPRING .250DIA X2.00LG	4
12	57212	COVER, STEERING SHAFT	1
13	55514	KNOB, SHIFT	1
14	54873	OIL TROUGH	1
15	642	WASHER, FLAT .765X1.81X.075	1
16	38525	RING, RETEX	4
17	40384	HUB CAP	2
18	314975	TORSION SPRING	2
19	304424	ROD, PIVOT	1
20	3535	NUT, PUSH	1
21	23769	BOLT, .800X1.390 HHHH 3/8-16	1
22	1499	NUT, 3/8-16 REGHXCTRLK	2
23	304422	CHUTE DEFLECTOR	2
			1



BOÎTE-PONT HYDROSTATIQUE AGRIFAB



61 GRAISSE DURINA "O" 20 OZ

ENSEMBLE # 62709

BOÎTE-PONT HYDROSTATIQUE AGRI-FAB

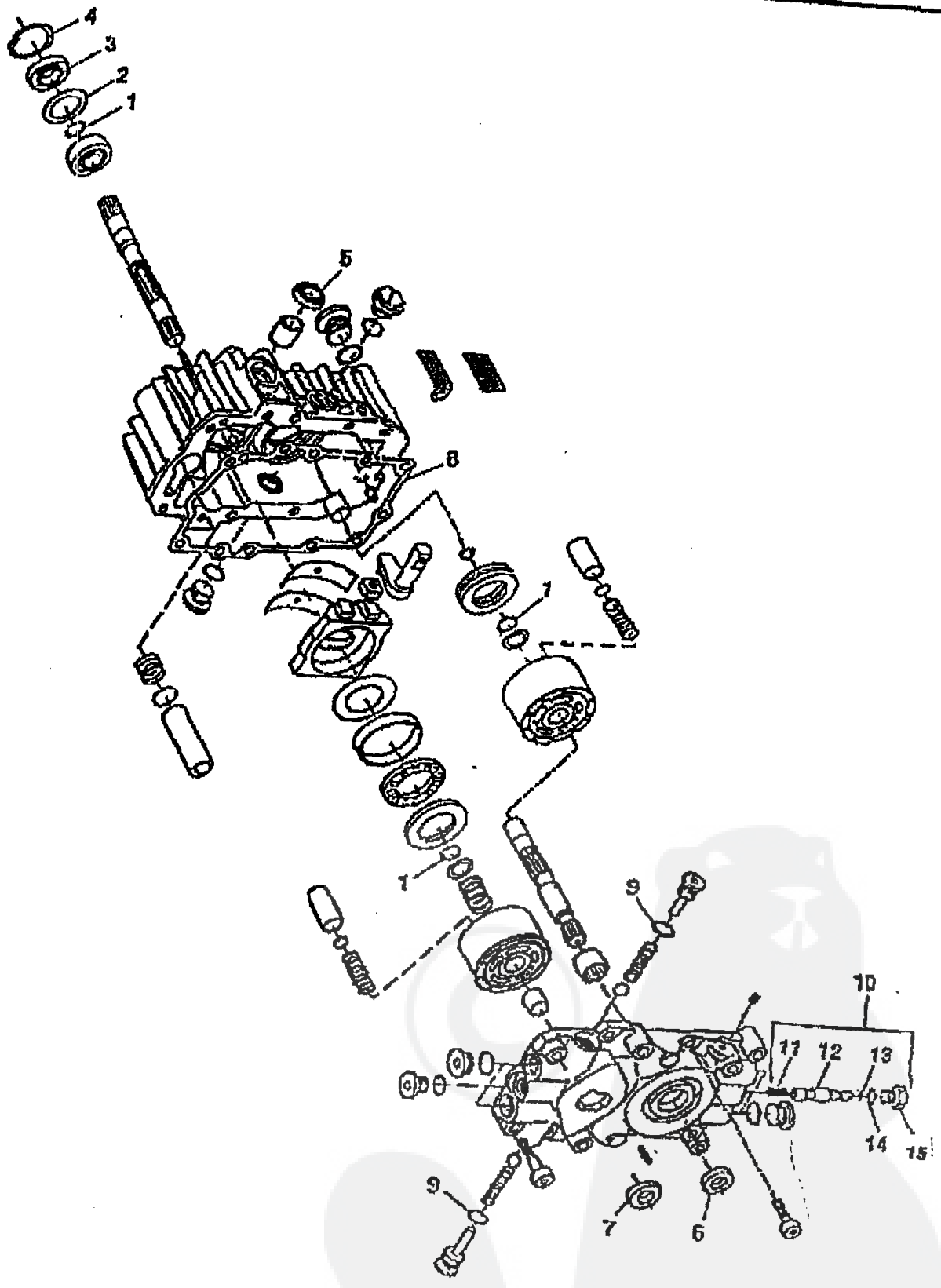
REF.	PIÈCE N°	QTE.	DESCRIPTION
1	44077	1	DEMI CARTER GAUCHE
2	44076	1	DEMI CARTER DROIT
3	44273	1	ESSIEU GAUCHE 3/4"
4	44272	1	ESSIEU DROIT 3/4"
5	44121	4	ROULEMENT À BILLES
6	44008	1	RONDELLE PLATE 3/4 DI X 1-1/8 DE X 0,030 ÉP
7	44096	2	ENGRENAGE À CHEVRONS
8	44097	2	ENGRENAGE À CHEVRONS
9	44133	2	CONTRE-ÉCROU HEX AVEC PLAQUE 1/2-20
10	44089	1	ARBRE, CROIX
11	44271	2	VIS/GOUJON
12	44148	2	CIRCLIP
13	44128	2	PALIER, BUTÉE
14	62590	1	CARTER, DIFFÉRENTIEL
15	44129	1	PALIER, FLASQUE
16	44095	1	ENGRENAGE, DIFFÉRENTIEL, 72 DENTS
17	44126	4	BOULON, TÊTE TORX 1/4-28 X 5/8" DE LONG
18	44104	1	ARBRE, ENTRÉE
19	44145	1	CIRCLIP
20	44144	1	ANNEAU DE RETENUE 7/16" DIA. EXT.
21	44081	1	CARTER, PALIER D'ENTRÉE
22	44098	2	ROULEMENT À AIGUILLES
23	44139	1	PALIER, BUTÉE
24	44109	2	RONDELLE PLATE 5/8 DI X 1-1/8 DE X 0,030 ÉP
25	44136	1	CLAVETTE, HI-PRO 3/32 X 5/8 DIA
26	44122	3	VIS HEX AVEC PLAQUE 1/4-20 X 3/4 DE LONG
27	44078	1	ENGRENAGE, PIGNON ENTRÉE, 17 DENTS
28	44371	1	RONDELLE PLATE 0,62 DI X 1,0 DE X 0,050 ÉP
—	44110	SB	RONDELLE PLATE 0,62 DI X 1,125 DE X 0,080 ÉP
29	44151	SB	RONDELLE PLATE 0,62 DI X 1,0 DE X 0,040 ÉP
30	44101	1	GOUJILLE FENDUE
31	44142	1	ÉCROU CRÉNÉLÉ 5/16-24
32	44130	1	RONDELLE PLATE 0,343 DI X 0,88 DE X 0,062 ÉP
33	44094	1	BRAS, ACTIONNEUR DE FREIN
34	44127	2	AXE, ACTIONNEMENT DE FREIN
35	44092	1	CHAPE DE FREIN
36	44090	1	DISQUE DE FREIN
37	44143	1	CLAVETTE, HI-PRO 3/16 X 5/8" DIA
38	44277	1	VIS HEX 1/4-20 X 1,50 DE LONG
39	44134	1	PLAQUE, GALET
40	44132	2	GALET, FREIN
41	44433	1	VIS HEX AVEC PLAQUE 1/4-20 X 1,00 DE LONG
42	44123	2	VIS HEX AUTOTARAUDANTE 1/4-20 X 2,00 DE LONG
43	44124	4	VIS HEX AUTOTARAUDANTE 1/4-20 X 3,00 DE LONG
44	44147	3	ROULEMENT À BILLES
45	44232	1	ROULEMENT À BILLES
46	44083	1	AXE, PIGNON AVEC COURONNE À 11 DENTS
47	44080	1	AXE D'ENTRAÎNEMENT
48	44342	1	ROULEMENT À AIGUILLES
49	44343	1	PALIER BUTÉE BRONZE 5/8 DI X 1-1/4 DE X 7/64 ÉP
—	44151	1	RONDELLE PLATE 0,62 DI X 1,0 DE X 0,040 ÉP
50	44371	SB	RONDELLE PLATE 0,62 DI X 1,0 DE X 0,050 ÉP
51	44394	1	JOINT À GRAISSE
52	44084	4	ACCOUPLLEMENT
53	44523	1	ENGRENAGE, 60 ET 17 DENTS
54	43178	1	ÉCROU HEX 1/4-20
55	44079	1	ENGRENAGE, PIGNON ENTRAÎNEMENT 17 DENTS
56	44138	1	BOULON, TÊTE CARRÉE
57	44278	1	RONDELLE 15/16 DE X 0,265 DI X 0,125 ÉP
58	43177	1	RONDELLE RESSORT DE BLOCAGE 1/4"
59	44269	2	GOUJILLE CYLINDRIQUE 3/16" DIA X 1/2" DE LONG
60	44125	1	RONDELLE PLATE 0,62 DI X 1,0 DE X 0,030 ÉP
61	44346	1	CHEVILLE 3/32 X 1/4
62	44098	20	GRAISSE SHELL DURINA-D (20 OZ)
63	44504	4	RONDELLE FREIN DE BLOCAGE 1/4" (JAUNE DI-CHR.)
—	44421	SB	RONDELLE PLATE 0,50 DI X 1,0 DE X 0,020 ÉP
—	44498	1	RONDELLE PLATE 0,50 DI X 1,0 DE X 0,030 ÉP
—	—	—	MANUEL D'ENTRETIEN

IMPORTANT

Les pièces de rechange doivent être obtenus chez
AGRI-FAB
 303 W. Raymond St.
 Sullivan IL 61951
 (217) 728-8388 ou
 communiquez avec un
 représentant agréé

*SB = Selon la besoin
 L'ENGRENAGE RÉDUCTEUR EXISTE AUSSI, MONTÉ # 62760

POMPE HYDROSTATIQUE



POMPE HYDROSTATIQUE

N° Réf.	N° de pièce	Description
+	310227	Pompe hydrostatique complète
+	313305	Jeu de réfection des joints (contient N° réf. 1 à 9, 13 et 14)
1		Anneau de retenue
2		Cale
3		Joint à lèvres
4		Anneau de retenue
5		Joint à lèvres
6		Joint à lèvres
7		Joint à lèvres
8		Joint -- section centrale
9		Joint torique
10	313305	Jeu de valve de dérivation complet (contient N° réf. 11 à 15)
11		Ressort comp. hélicoïdal
12		Tiroir de dérivation
13		Joint torique
14		Joint torique
15		Bouchon de dérivation

+ Non illustré

