

# REPAIR PARTS MANUAL

## 39" - 12 H.P. LAWN TRACTOR

### MODEL B3560-810

#### ONE YEAR LIMITED WARRANTY

For one (1) year from date of purchase by the first consumer for residential use (thirty (30) days commercial use), NOMA Outdoor Products Incorporated warrants that it will replace free of charge, including labor, any original part of any NOMA Outdoor Products Incorporated product found to be defective by any authorized Service Dealer or the factory, except the battery which is warranted for ninety (90) days from date of purchase.

This warranty does not cover engine, transmission, transaxle or differential (these items are covered by their manufacturer's own warranty). This warranty does not cover parts that have failed due to normal wear or parts that have failed subject to misuse or abuse. Transportation of the unit or part to and from an authorized Service Dealer or factory is the responsibility of the owner.

A step by step explanation as to what procedure should be followed for this warranty is:

1. If a part becomes defective, contact the store where the unit was purchased for the name and address of the authorized Service Dealer nearest to you.
2. If you cannot locate an authorized Service Dealer, write Service Department of NOMA Outdoor Products Incorporated for the name and address of the authorized Service Dealer in your area or call the Service Department at 1-901-422-1690.
3. Return the defective product, along with proof of purchase to such authorized Service Dealer for replacement of any defective part where covered by this warranty.

There is no other express warranty. Implied warranties, including those of merchantability and fitness for a particular purpose are limited to one (1) year from date of purchase. Liability for incidental or consequential damages are excluded.

Some states do not allow limitations on how long an implied warranty lasts, so the above limitation may not apply to you. Some states do not allow the exclusion of incidental or consequential damages, so the above exclusion may not apply to you. This warranty gives you specific legal rights, and you may have other rights which vary from state to state.

NOMA Outdoor Products Incorporated      Caller 8000      Jackson, TN 38308-6000

#### UNIT PARTS AND SERVICE

This manual contains instructions for safety, assembly and maintenance. Read this manual carefully and completely so that you will know proper assembly, use and care of your unit. Also fill in and mail the registration card packed with the unit. For service other than covered in this manual, contact an authorized service dealer. A nationwide parts and service organization has been established to provide locally available parts and service. A list of authorized parts distributors has been included in this manual. When ordering repair parts, always give the following information: 1. The Part Name; 2. The Part Number; 3. The Quantity desired; 4. The Full (eight digit) Model Number of the unit. The model number will be found on a plate attached to the unit.



**Look for this symbol. It means - ATTENTION! BECOME ALERT! A HAZARD TO OPERATOR, BYSTANDER, PROPERTY OR EQUIPMENT MAY EXIST.**

NOMA Outdoor Products Incorporated  
 Caller 8000  
 Jackson, TN 38308-6000

Part No. 316076

0191

## OPERATIONAL PRECAUTIONS



**THESE INSTRUCTIONS ARE FOR YOUR PROTECTION. PLEASE READ THEM CAREFULLY.**



1. Know the controls and how to stop quickly. **READ THIS OPERATOR'S MANUAL** and instructions furnished with attachments.
2. Wear safety glasses or eye shields when assembling or operating riding mower.
3. Do not allow children to operate the machine. Do not allow adults to operate it without proper instruction.
4. Do not carry passengers. Do not mow when children and others are around. Disengage power to blade(s) or attachment(s) and stop the engine while others are in the vicinity of the mower.
5. Battery fluid (electrolyte) is an **ACID** and is extremely dangerous. Do not smoke while servicing the battery. Do not service the battery near a open flame or spark.
6. Handle gasoline with care, it is highly flammable.
  - A. Use approved gasoline container.
  - B. Never remove the fuel cap of, or add gasoline to, a running or hot engine, or an engine that has not been allowed to cool for several minutes after running. Never fill the tank indoors and always clean up spilled fuel immediately.
  - C. Do not smoke while filling fuel tank.
  - D. Do not run the engine indoors. Open doors if engine must be run in garage. Exhaust fumes contain **CARBON MONOXIDE**, an **ODORLESS** and **DEADLY GAS**.
7. Check fuel supply before each use allowing space for expansion as the heat of the engine and/ or sun can cause gasoline to expand.
8. Do not operate mower when barefooted. Always wear substantial footwear, preferably steel-toed shoes. Do not wear loose fitting clothing that could get caught in moving parts.
9. Clear the work area of objects (wire, rocks, etc.) which might be picked up and thrown. Check all controls for proper function.
10. Disengage all attachment clutches, shift to neutral, and set parking brake before attempting to start the engine (motor). When starting engine equipped with a pull starter, stand firm and make sure your feet are well away from the blade(s).
11. Disengage power to blade(s) or other attachment(s) and stop the engine (motor) before leaving the operator's position. Always dismount from the left side.
12. Disengage power to blade(s) or other attachment(s) and stop the engine (motor) before making any repairs or adjustments.
13. Disengage power to blade(s) or other attachment(s) when transporting or not in use.
14. Take all possible precautions when leaving the vehicle unattended, such as disengaging power to blade(s) or attachment(s), lower the attachment(s), setting the parking brake, stopping the engine (motor), and removing the key.
15. Do not stop or start suddenly when going uphill or downhill. Mow up and down the face of steep slopes; never across the face.
16. Reduce speed and exercise extreme caution on slopes and in sharp turns to prevent tipping or loss of control. Be especially cautious when changing direction on slopes.
17. Stay alert for holes, rocks, and roots in the terrain and other hidden hazards. Keep away from drop-off. Never operate your riding mower on wet or slippery grass or at a speed which could cause a skid. Exercise care when mowing around a fixed object to prevent the blade(s) from striking it. Never deliberately run over any foreign object.
18. Always disengage blade control lever before attempting to remove the mower from a hole or other obstruction.
19. Use care when pulling loads or using heavy equipment.
  - A. Use only approved drawbar hitch points.
  - B. Limit loads to those that you can safely control.
  - C. Do not turn sharply. Use care when backing.
  - D. Use counterweight(s), wheel weights or tire chains when suggested in attachment(s) instructions.
20. Watch for traffic when crossing or near roadways.
21. When using attachment(s), never direct discharge of material toward bystanders nor allow anyone near the vehicle while in operation.
22. Keep the vehicle and attachments in good operating condition, and keep safety devices in place and in working condition.
23. Keep all nuts, bolts, and screws tight to be sure the equipment is in safe working condition.
24. Never store the equipment with gasoline in the tank inside a building where fumes may reach an open flame or spark. Allow the engine to cool before storing in any enclosure.
25. To reduce fire hazard, keep the engine free of grass, leaves or excessive grease.
26. The vehicle and attachments should be stopped and inspected for damage after striking a foreign object, and the damage should be repaired before restarting and operating the equipment.
27. Do not change the engine governor settings or over-speed engine.
28. When using the vehicle with mower, proceed as follows:
  - A. Mow only in daylight or in good artificial light.
  - B. Never make a cutting height adjustment while the engine (motor) is running if the operator must dismount to do so.
  - C. Shut the engine (motor) off when removing the grass catcher or unclogging chute.
  - D. Check the blade mounting bolts for proper tightness at frequent intervals.
29. Under normal usage, the grass catcher bag material is subject to deterioration and wear. Check the bag frequently for deterioration and wear and replace worn bags. Check that replacement bags comply with the original manufacturer's recommendations or specifications.
30. Disengage power to mower before backing up. Do not mow in reverse unless absolutely necessary and then only after careful observation of the entire area behind the mower.

## OWNER'S INFORMATION

Record the following information about your unit so that you will be able to provide it in case of loss or theft.

MODEL NUMBER:     -     (Enter complete 8 digit number from model plate on unit)

PURCHASE DATE: \_\_\_ / \_\_\_ / \_\_\_ CODE NO.: \_\_\_\_\_ SERIAL NO.: \_\_\_\_\_

DEALER'S NAME AND ADDRESS: \_\_\_\_\_

CITY: \_\_\_\_\_ STATE: \_\_\_\_\_ TELEPHONE: \_\_\_\_\_

### CONTENTS OF SHIPPING CARTON

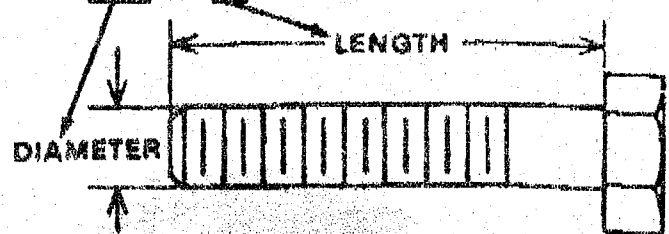
- 1 - Lawn Tractor with 39 inch Mower Deck
- 1 - Operator's Manual
- 1 - Repair Parts Manual
- 1 - Engine Manual
- 1 - Steering Wheel (see Note)
- 1 - Seat (see Note)
- 1 - Steering Shaft Cover (see Note)
- 1 - Steering Shaft Spacer (see Note)
- 1 - Spring Pin (see Note)
- 2 - Tire & Rim Assembly (see Note)
- 1 - Shift Knob
- 2 - Hub Caps (see Note)
- 1 - Bag of Assembly Parts Containing (see Note):
  - 1 - Oil Drain Trough
  - 4 - Flatwashers
  - 2 - Retaining Rings
  - 4 - 5/16 x 3/4 inch Hex Head Screws
  - 4 - 5/16 inch Split Lockwashers
  - 4 - 11/32 inch Flatwashers

**NOTE:** Refer to page 26 & 27 (Customer Assembly Parts) for more detailed description.

### TOOLS REQUIRED FOR ASSEMBLY

- 2 - 7/16 inch Wrenches (or adjustable wrench)
- 1 - 1/2 inch Wrench (or adjustable wrench)
- 1 - Small Phillips Screwdriver with a 1/4 inch shank
- 1 - Hammer

### HOW TO MEASURE SCREW SIZE (5/16 x 1 1/2 INCH)



## DANGER



This lawn tractor can be dangerous if carelessly used.

Read your Operator's Manual thoroughly before operating your lawn tractor.

Always wear safety glasses or eye shields while assembling or operating your lawn tractor.

DO NOT carry passengers at any time.

Keep your hands, feet, hair and loose clothing away from the discharge area, the underside of the mower deck or any moving parts while the engine is running.

DO NOT allow children or young teenagers to operate or be near your lawn tractor while it is operating.

### ALWAYS GIVE THE FOLLOWING INFORMATION WHEN ORDERING REPAIR PARTS:

1. The PART NUMBER; 2. The PART NAME; 3. QUANTITY DESIRED; 4. The MODEL NUMBER (As shown on Model Plate).

SEND PART ORDERS AS PER INSTRUCTIONS ON THE FRONT PAGE.

DO NOT USE KEY NUMBERS WHEN ORDERING REPAIR PARTS. ALWAYS USE PART NUMBERS.

All replacement parts will be supplied in current production colors or in a neutral color.

A handling fee is applicable to small parts orders.

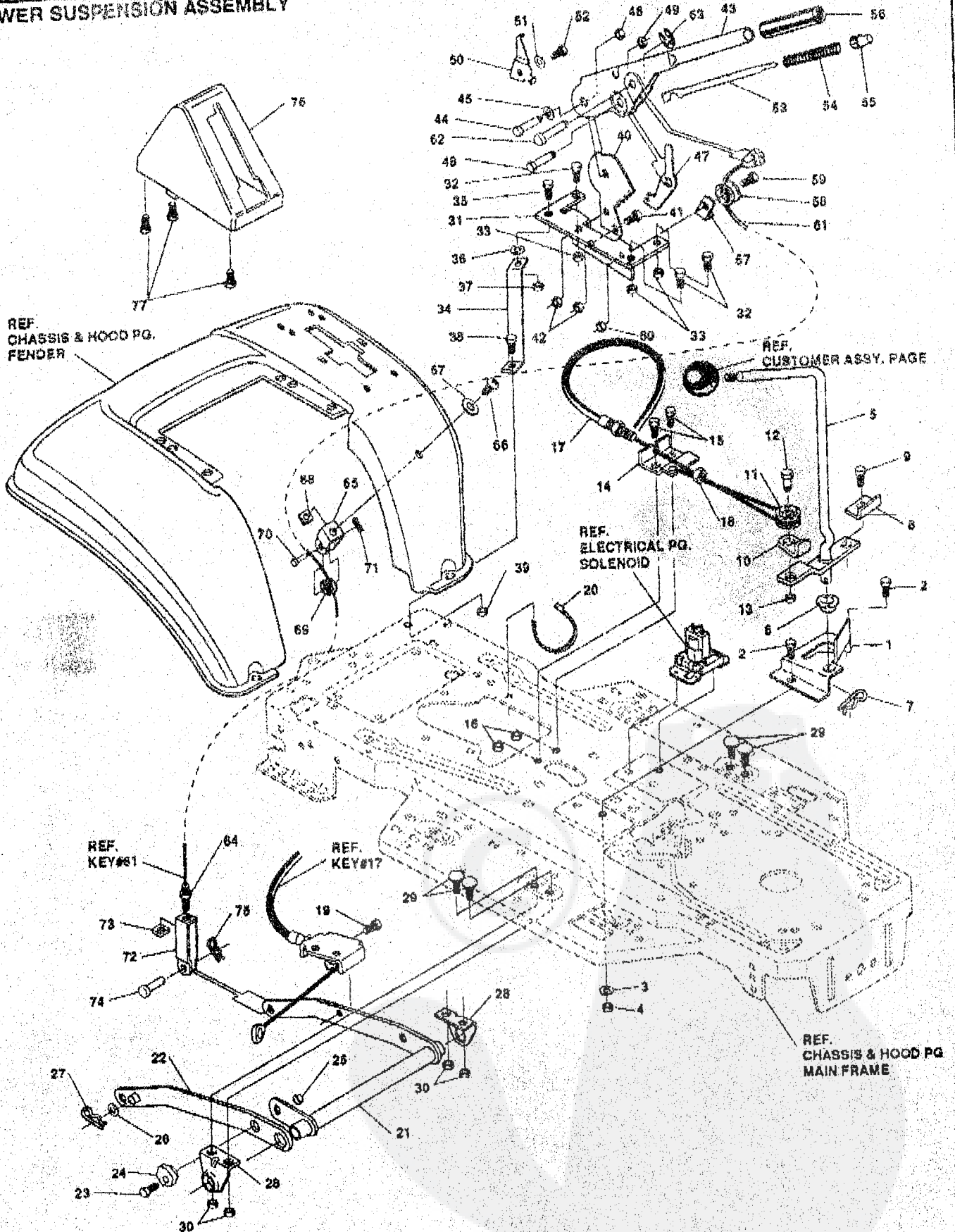
YOUR UNIT IS RIGHT HAND (RH) OR LEFT HAND (LH) AS YOUR STAND BEHIND IT.

## 39" ALL WHEEL STEER MODEL B3560-810

key#	part#	description	qty.
1	315967	FRAME,LF P920/F4360	1
2	310005	FOOTPAD,LH	1
3	310006	FOOTPAD,RH	1
4	309235	FASTENER, RATCHET	12
5	313047	BRKT,GRILL LH	1
6	313048	BRKT,GRILL RH	1
7	56361	BRACKET, FRONT AXLE	1
8	56030	SCREW, 5/16-18X.75WDFLLK	5
9	55273	NUT, 5/16-18 HXWDFLLK	5
10	300440	GUIDE, BELT, RIDER	1
11	1498	NUT, 5/16-18 REGHEXCTRLK	1
12	308207	BOLT, .825X2.18 HSSH 1/2-13	1
13	309008	NUT, 1/2-13 HEXJAM CTRLK	1
14	122207	SCREW, 3/8-18X3.00 HHC	2
15	2483	WASHER, .391DX1.25DX.07 BELLVIL	2
16	1499	NUT, 3/8-16 REGHXCTRLK	2
17	120229	SCREW, 5/16-18X .88 HHC	2
18	1498	NUT, 5/16-18 REGHEXCTRLK	2
19	300635	GUIDE,BELT SHORT 15" WHEEL	1
20	124824	NUT, 5/16-18 HEXJAM	1
21	271190	NUT, 3/8-16 HEXKEPS	1
22	310638	CONSOLE	1
23	46763	RIVET, POP	1
24	35497	SCREW, 5/16-18X .50 WAHHTAP	1
25	995346	SCREW, 1/4-20X .50 WAHHTAP	12
26	304860	DASHBOARD	2
27	995346	SCREW, 1/4-20X .50 WAHHTAP	2
28	57159	LATCH, .94WDX.047 ASSY HOOD	2
29	8482	BOLT, .375X .156 HSSH 5/16-18	2
30	120394	WASHER, FLAT .406X .81X.065	2
31	120393	WASHER, FLAT .344X .69X.065	2
32	1498	NUT, 5/16-18 REGHEXCTRLK	2
33	53446	PIN, 5/16-18 HOOD LATCH	2
34	138538	WASHER, REGINTLK.320X.61X.03	2
35	45174	NUT, 5/16-18 HEXWDFLLK WHIZ	2
36	312306	BAFFLE CONSOLE SOUND EXPORT	1
37	300314	SCREW, 1/4-20X .88WAHHTAP	2
38	120392	WASHER, FLAT .281X .63X.065	2
39	1502	NUT, 1/4-20 REGHEXCTRLK	1
40	316527	HOOD	27.5"
41	47453	EDGING,WIDE BLK	1
42	314476	GRILLE	4
43	274672	SCREW, 1/4-20X .63 WAHHC	4
44	120393	WASHER, FLAT .344X .69X.065	4
45	1502	NUT, 1/4-20 REGHEXCTRLK	1
46	302333	LENS, SMOKED W/TAB NO LOGO	1
47	314948	FOIL,LENS DYNA-PRO REFLECTOR	4
48	57796	SCREW, #6 X .50 PLASTITE	2
49	36149	BOLT, .375X .500 HSSH 5/16-18	2
50	1498	NUT, 5/16-18 REGHEXCTRLK	1
51	310748	LANYARD,HOOD 16.77LG H15	1
52	48900	SCREW, 1/4-20X1.00 WAHHC	1
53	120392	WASHER, FLAT .281X .63X.065	1
54	1502	NUT, 1/4-20 REGHEXCTRLK	1
55	304761	PLATE, SEAT	2
56	310444	BRACKET, SEAT SUPPORT	2
57	20507	BOLT, .437X .156 HSSH 5/16-18	2
58	1498	NUT, 5/16-18 REGHEXCTRLK	4
59	120228	SCREW, 5/16-18X .63 HHC	4
60	1498	NUT, 5/16-18 REGHEXCTRLK	4
61	57153	SPRING,SEAT 2.63LG,1.49OD BLK	2
62	1341	CLAMP,SPRING	2
63	44811	SCREW, 1/4-20X .75 HXWATAP	2
64	56907	COVER,SEAT SPRING	1
65	312405	FENDER	4
66	995346	SCREW, 1/4-20X .50 WAHHTAP	2
67	122017	SCREW, 5/16-18X1.00 HHC	4
68	446363	WASHER, FLAT .376X .88X.082	2
69	1498	NUT, 5/16-18 REGHEXCTRLK	4
70	55021	TRIM,STRIP,BLACK	75"
71	311209	COVER PLASTIC	1
72	313213	BRACKET,COVER	1
73	311331	SCREW, 1/4-15X.44/53 HILOHHWA	2
74	1341	CLAMP,SPRING	2
75	311331	SCREW, 1/4-15X.44/53 HILOHHWA	2
76	318057	OPERATOR'S MANUAL (NOT ILLUSTRATED)	1
77	318076	PARTS MANUAL (NOT ILLUSTRATED)	1

# 39" ALL WHEEL STEER MODEL B3560-810

## MOWER SUSPENSION ASSEMBLY



**NOTE: ALWAYS USE ORIGINAL EQUIPMENT PARTS.** Use of service/replacement parts other than original equipment parts may void your warranty.

**ALL UNNUMBERED ITEMS ARE INTERCHANGABLE WITH OPPOSITE SIDE**

310648F

Part No. 318070

39" ALL WHEEL STEER MODEL B3560-810

key#	part#	description	qty
1	9402	BRACKET,CLUT-ENGAGE LEVER	1
2	180079	SCREW, 5/16-18X1.00 HHC	2
3	120383	WASHER, FLAT .344X .69X.065	2
4	1498	NUT, 5/16-18 REGHEXCTRLK	2
5	304791	ASSY,CLUTCH LEVER	1
6	90148	BEARING,FL. 500IDX.8280D	1
7	8260	PIN, HAIR .091 DIA X1.66LG	1
8	315347	BRACKET, SWITCH ENGAGE	1
9	35498	SCREW, 5/16-18X.75 WAHTAP	1
10	1288	BRKT,CABLE RETAINER	1
11	39298	PULLEY, .905X.305 NYLON	1
12	58336	BOLT, .375X .375 HHSH 1/4-20	1
13	1502	NUT, 1/4-20 REGHEXCTRLK	1
14	9397	BRKT, FRAME CABLE	2
15	180020	SCREW, 1/4-20X.75 HHC	2
16	1502	NUT, 1/4-20 REGHEXCTRLK	1
17	301503	ASSY,CABLE, BLADE ENGAGE	1
18	120613	NUT, 1/4-28 FLAM	1
19	35486	SCREW, 5/16-18X.75 WAHTAP	1
20	57444	TIE, CABLE BLACK NYLON	1
21	9185	ASSY,REAR LIFT	1
22	9186	ASSY,LINK,RIGHT SIDE	1
23	180079	SCREW, 5/16-18X1.00 HHC	1
24	58247	ADJUSTING NUT	1
25	1498	NUT, 5/16-18 REGHEXCTRLK	2
26	120396	WASHER, FLAT .531X1.06X.095	2
27	8260	PIN, HAIR .091 DIA X1.66LG	2
28	9117	BRKT,REAR,HANG,SUSP.	4
29	126211	BOLT, 5/16-18X.63 CARR	4
30	1498	NUT, 5/16-18 REGHEXCTRLK	1
31	58333	BRACKET,HGT/ADJUST SUPPORT	3
32	180077	SCREW, 5/16-18X.75 HHC	3
33	1498	NUT, 5/16-18 REGHEXCTRLK	3
34	304788	BRACE, FENDER	1
35	180079	SCREW, 5/16-18X1.00 HHC	1
36	45602	WASHER, FLAT .333X .87X.119	1
37	1498	NUT, 5/16-18 REGHEXCTRLK	1
38	180079	SCREW, 5/16-18X1.00 HHC	1
39	1498	NUT, 5/16-18 REGHEXCTRLK	1
40	301238	QUADRANT,HEIGHT ADJUST	2
41	180077	SCREW, 5/16-18X.75 HHC	2
42	1498	NUT, 5/16-18 REGHEXCTRLK	1
43	9788	HANDLE,LIFT SHORT BLK	1
44	300171	BOLT, .500X .270 HHSH 5/16-18	1
45	996418	WASHER, FLAT .506X .75X.024	1
46	44108	NUT, 5/16-18 HWD/FLCTRLK	1
47	301239	PAWL, HEIGHT ADJUST	1
48	300171	BOLT, .500X .270 HHSH 5/16-18	1
49	44108	NUT, 5/16-18 HWD/FLCTRLK	1
50	9435	POINTER Z-PL	1
51	138479	WASHER, EXLK.195X.41X.03	1
52	35287	SCREW, #8-32X.38 HHWAT	1
53	303027	ROD,ACTUATOR-SHORT	1
54	58325	SPRING, HEIGHT ADJUST	1
55	58325	KNOB, HGT ADJ PUSH BUTTON	1
56	58329	GRIP, .750 OD W/HOLE	1
57	9149	BRKT, CABLE RETAIN	1
58	39298	PULLEY, .906X.305 NYLON	1
59	58336	BOLT, .375X .375 HHSH 1/4-20	1
60	1502	NUT, 1/4-20 REGHEXCTRLK	1
61	300341	CABLE, LIFT 21.70 F-5 20X8-8	1
62	300310	PIN,CLEVIS .310DIA+.475LG	1
63	300311	RING, RET E .31X.24	1
64	120375	NUT, 1/4-20 REGHEX	1
65	9299	CLEVIS	1
66	439455	SCREW, 5/16-18X.56PHPNMA BKPH	1
67	301551	WASHER, .344IDX1.50DX.09 CU BPH	1
68	120373	NUT, 5/16-18 SQ	1
69	39298	PULLEY, .906X.305 NYLON	1
70	300317	PIN, CLEVIS .38 DIA X1.00 LG	1
71	8260	PIN, HAIR .091 DIA X1.66LG	1
72	9405	CLEVIS, LIFT CABLE	1
73	120372	NUT, 1/4-20 REGSQ	1
74	39522	PIN CLEVIS .312 X .812	1
75	121222	PIN, COTTER .090/.088X.75LG	1
76	300335	LIFT COVER-39" F5	1
77	300340	SCREW, #10 X.75 HHPLAST	3

◊ Indicates Standard Hardware Items.

# 39" ALL WHEEL STEER MODEL B3560-810

## FRONT WHEEL STEERING ASSEMBLY

REF. CUSTOMER ASSY. PG. STEERING WHEEL & HARDWARE

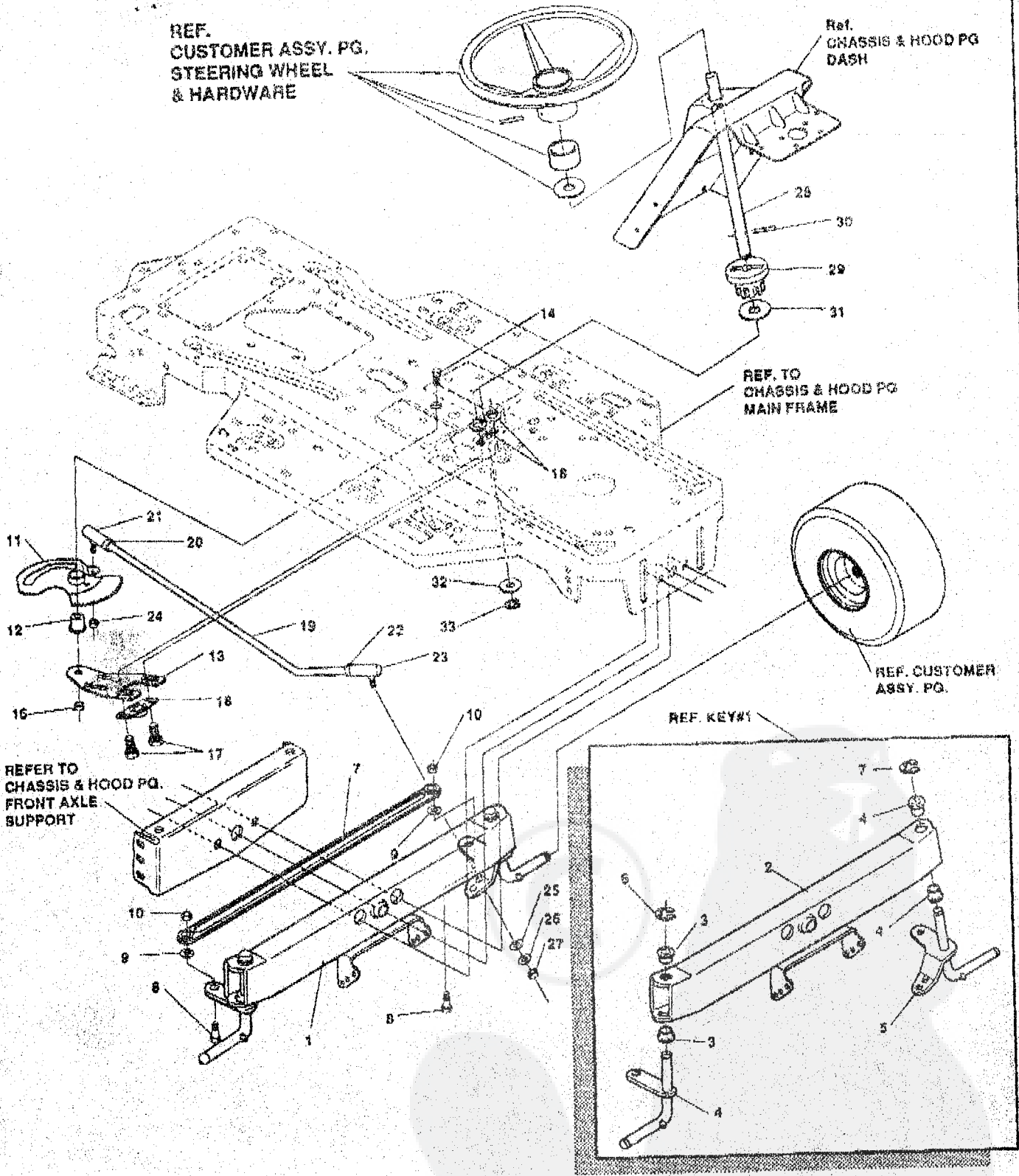
Ref. CHASSIS & HOOD PG DASH

REF. TO CHASSIS & HOOD PG MAIN FRAME

REF. CUSTOMER ASSY. PG.

REF. KEY#1

REFER TO CHASSIS & HOOD PG. FRONT AXLE SUPPORT



ALL UNNUMBERED ITEMS ARE INTERCHANGABLE WITH OPPOSITE SIDE.

NOTE: ALWAYS USE ORIGINAL EQUIPMENT PARTS. Use of service/replacement parts other than original equipment parts may void your warranty.

315654D

Part No. 318076

## 39" ALL WHEEL STEER MODEL B3560-810

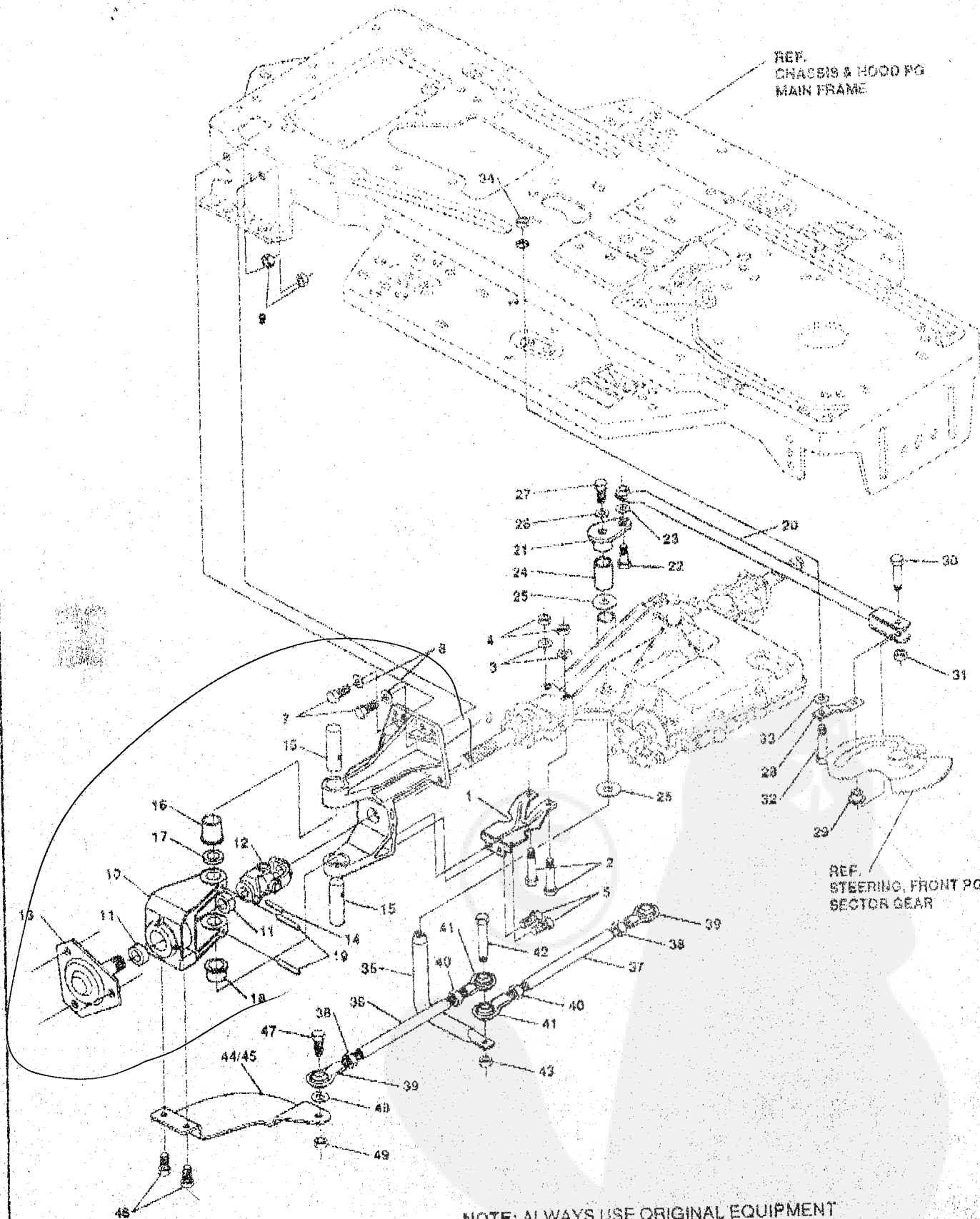
key#	part#	description	qty
1		AXLE, FRONT ASSY SUS 4WS	1
2	300272	ASSY, FRONT AXLE SUS	1
3	52407	SPINDLE BEARING	4
4	9274	ASSY, SPINDLE RH	1
5	315886	ASSY, SPINDLE LH	1
6	36625	RING, RETEX .57X.05TRU5133-75	2
7	304590	TIE ROD ASSY 19.8X1.0 W-SECTION	1
8	0180126	SCREW, 3/8-16X1.75 HHC	2
9	120382	WASHER, REGSPTLK 393X 69X.10	2
10	0120377	NUT, 3/8-16 REGHEX	2
11	313634	ASSY SECTOR GEAR	1
12	313629	BUSHING SECTOR GEAR	1
13	313672	SUPPORT SECTOR GEAR	1
14	0315196	SCREW, 1/2-20X3.00 HHC	1
15	0274654	NUT, 1/2-20 REGHXCTRLK	1
16	302498	BEARING FLANGE 0.6 BORE	1
17	058030	SCREW, 5/16-18X.75WDFLLK	2
18	055273	NUT, 5/16-18 HXWDFLLK	2
19	302863	DRAO LINK .625 DIA	1
20	0124925	NUT, 3/8-24 REGHEXJAM	1
21	57158	BALL JOINT 3/8 THD SHORT STUD	1
22	0272123	NUT, 7/16-20 HXJAM	1
23	302965	JOINT, BALL ASSY 7/16-20	1
24	046692	NUT, 3/8-24 WDFLHLK WHIZ	1
25	120396	WASHER, FLAT .531X1.06X.095	2
26	120363	WASHER, REGSPTLK 459X.76X.12	1
27	0271506	NUT, 7/16-20 REGHX	1
28	313699	SHAFT, STEERING	1
29	302314	PINION STEERING	1
30	302524	PIN DOWEL STR ERO LT	1
31	315194	WASHER, FLAT 1.38X.51X.043	1
32	2968	WASHER, FLAT .504X .75X.059	1
33	20564	RING, RET E .39X.04TRU5133-50	1

\* Order individual Parts.

0 Indicates STANDARD HARDWARE ITEMS.



# REAR WHEEL STEERING ASSEMBLY



ALL UNNUMBERED ITEMS ARE INTERCHANGABLE WITH OPPOSITE SIDE

NOTE: ALWAYS USE ORIGINAL EQUIPMENT PARTS. Use of service/replacement parts other than original equipment parts may void your warranty.

315291C

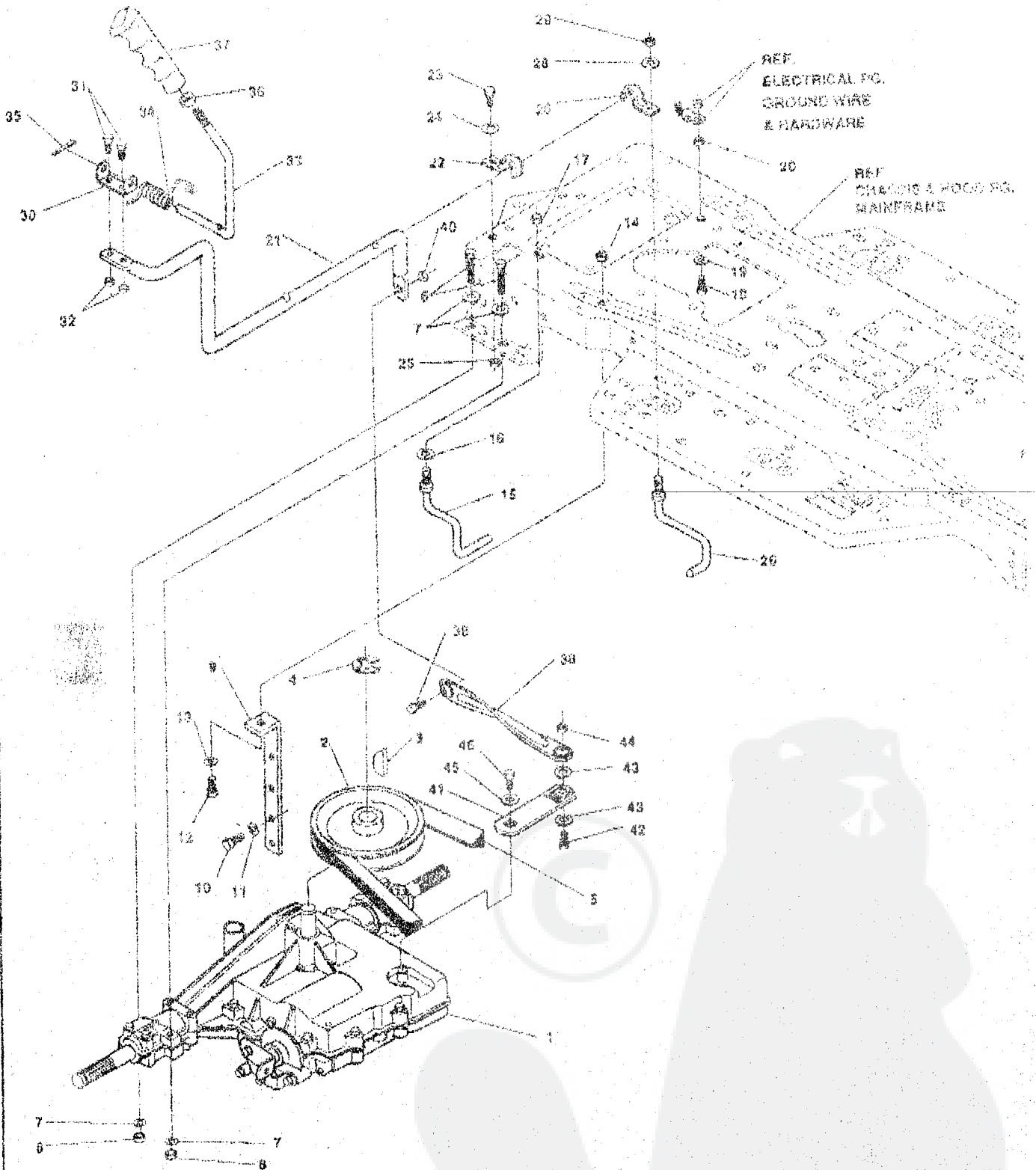
Part No. 318076

key#	part#	description	qty
1	306001	BRKT X-AXLE MTG	2
2	180089	SCREW, 5/16-18X2.25 HHC	4
3	120393	WASHER, FLAT .344X.69X.065	4
4	1488	NUT, 5/16-18 REGHEXOTRLK	4
5	451814	SCREW, 5/16-18X.63HWATAP	4
6	214267	BRCKT, STRG PIVOT W/DRILL HOLES	2
7	122017	SCREW, 5/16-18X1.00 HHD	8
8	120393	WASHER, FLAT .344X.69X.065	8
9	1488	NUT, 5/16-18 REGHEXOTRLK	8
10	12465	BRACKET, STR PIVOT	2
11	12325	BEARING	4
12	12290	U-JOINT ASSEMBLY	2
13	315480	HUB ASSEMBLY GREY 881	2
14	36311	PIN, GROOVED 250 DIA X 1.50 LG	2
15	12289	PIN, STEERING HINGE	4
16	12288	BUSHING, SHOULDERED (OILITE)	2
17	21582	WASHER, FLAT .765X1.25X.042 PL	2
18	12321	BUSHING, SHOULDERED (OILITE)	2
19	456722	PIN, SPRING 250 DIA X 1.50 LG HVPL	4
20	313628	ROD ASM, DRAGLINK	1
21	308719	PIVOT, STEERING	1
22	12319	BOLT, 5/8X.340 HHSH 3/8-24	1
23	120394	WASHER, FLAT .406X.81X.065	1
24	304115	SPACER, STEERING SHAFT	1
25	25177	WASHER, FLAT .765X1.19X.048	2
26	46602	WASHER, FLAT .333X.87X.119	1
27	421051	SCREW, 5/16-24X1.00 HHC	1
28	302584	ARM ROLLER SWING 4 W	1
29	304116	CAM YOKE ROLLER	1
30	304122	SHOULDER BOLT CAM ROLLER	1
31	274854	NUT, 1/2-20 REGHXOTRLK	1
32	302586	SHOUL BOLT CAM FOLLOWER	1
33	120394	WASHER, FLAT .406X.81X.065	1
34	412349	NUT, 3/8-24 HXOTRLK	1
35	308720	SHAFT, STEERING PIVOT	1
36	308447	ROD, TIE 1/2" D X 8.00 LG	1
37	308446	ROD, TIE 1/2" D X 9.5 LG	1
38	308389	NUT, 3/8-24 LH THD REGHJAM	2
39	308384	ROD, TIE END LH 3/8-24 EURO	2
40	124925	NUT, 3/8-24 REGHEXJAM	2
41	304260	ROD, TIE END RH	2
42	181646	SCREW, 3/8-24X1.75 HHC	1
43	412349	NUT, 3/8-24 HXOTRLK	1
44	306217	ARM RW STR ERO RH	1
45	306218	ARM RW STR ERO LH	1
46	39728	SCREW, 3/8-16X.75WAHNTAP 3K	4
47	181639	SCREW, 3/8-24X1.25 HHC	2
48	120382	WASHER, REGSPTLK 393X.68X.10	2
49	412349	NUT, 3/8-24 HXOTRLK	2

∅ Indicates STANDARD HARDWARE ITEMS

# 39" ALL WHEEL STEER MODEL B3560-810

## MOTION DRIVE ASSEMBLY



**NOTE: ALWAYS USE ORIGINAL EQUIPMENT PARTS.**  
 Use of service/replacement parts other than original equipment parts may void your warranty.

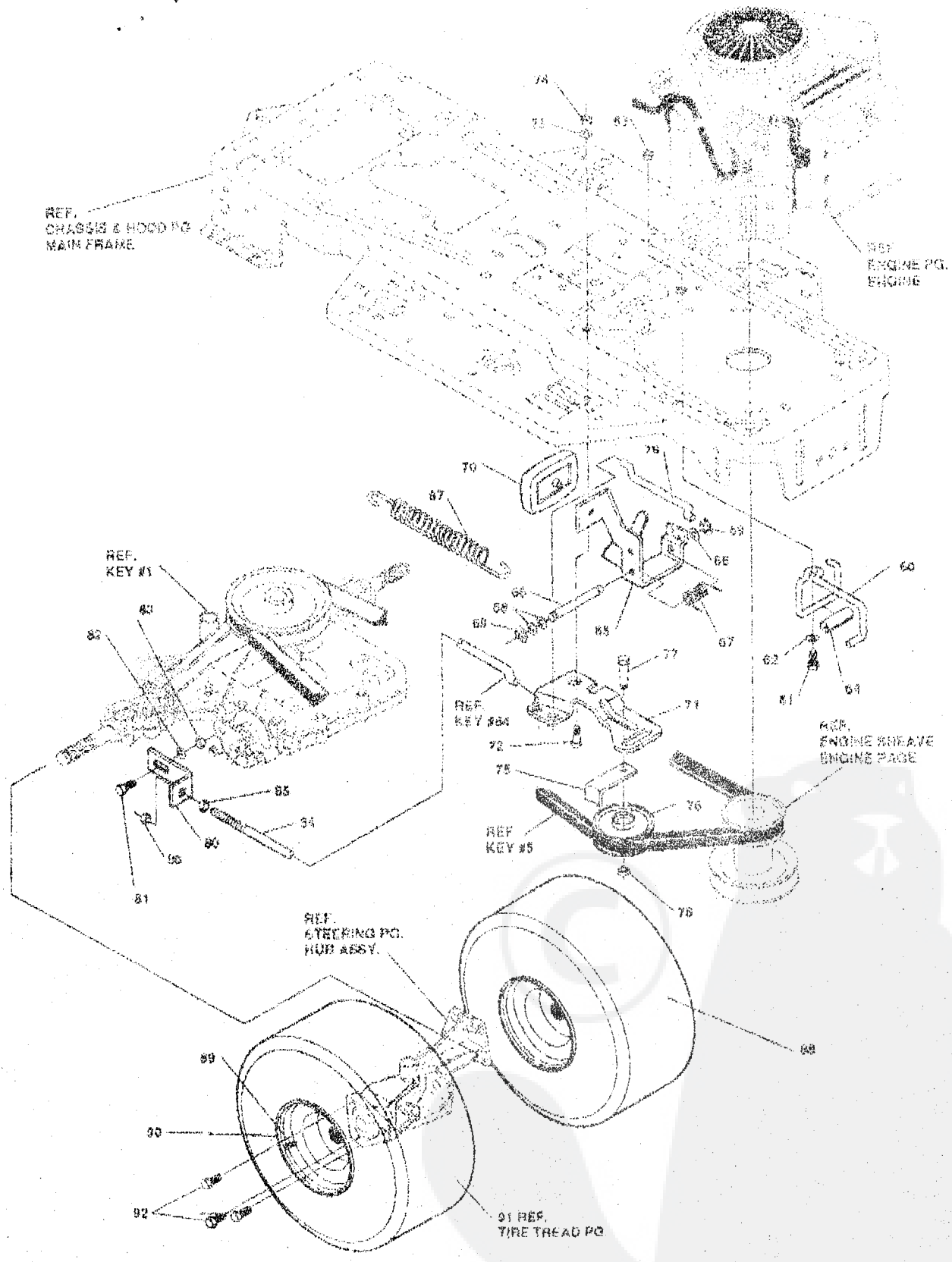
**ALL UNNUMBERED  
 ITEMS ARE INTERCHANGABLE  
 WITH OPPOSITE SIDE**

315601C

key#	part#	description	qty
		F438C-5 5SP (CONTACT NEAREST DEALER)	1
1	TRANSAXLE		1
2	303108	PULLEY, V4L 800TA	1
3	3021	KEY, WDRF 506 .750X.197X.312	1
4	22053	RING, RETEN .55X.047RUS100-62	1
5	314120	BELT, V 4L 8725	4
6	0180040	SCREW, 1/4-27X2.50	6
7	120392	WASHER, FLAT .344X .69X.065	4
8	01502	NUT, 1/4-20 REGHEXCTRLK	1
9	12632	STABILIZER BRKT P920.F4150	2
10	025498	SCREW, 5/16-18X .75 WASHTAP	2
11	120638	WASHER, HVSPYTLK .328X.60X.09	1
12	0122017	SCREW, 5/16-18X1.00 HHC	1
13	120393	WASHER, FLAT .344X .69X.065	1
14	01498	NUT, 5/16-18 REGHEXCTRLK	1
15	314935	GUIDE, BELT 5/16-18THD	1
16	120638	WASHER, HVSPYTLK .328X.60X.09	1
17	01498	NUT, 5/16-18 REGHEXCTRLK	1
18	0120228	SCREW, 5/16-18X .63 HHC	1
19	138553	WASHER, REGINTLK .320X.61X.03	1
20	01498	NUT, 5/16-18 REGHEXCTRLK	1
21	310029	LEVER, SHIFT, LWR 4060	1
22	310348	CLIP-SHIFT LEVER 82 ROD	1
23	0180077	SCREW, 5/16-18X .75 HHC	1
24	996416	WASHER, FLAT .361X1.00X.125	1
25	01498	NUT, 5/16-18 REGHEXCTRLK	1
26	310348	CLIP-SHIFT LEVER 62 ROD	1
27	57259	GUIDE, BELT 5/16-18THD	1
28	996416	WASHER, FLAT .391X1.00X.125	1
29	01498	NUT, 5/16-18 REGHEXCTRLK	1
30	310350	PIVOT BRKT LEVER	2
31	0180018	SCREW, 1/4-20X .62 HHC	2
32	01502	NUT, 1/4-20 REGHEXCTRLK	1
33	309895	LEVER, SHIFT UPPER SF 1/2-13TH	1
34	310265	SPRING, TORS. .56X.95X.095	1
35	137185	PIN, COTTER .125 DIA X1.00LG	1
36	0120238	NUT, 1/2-13 HEXJAM	1
37	308680	HANDLE 1/2-13	1
38	314971	LINK TIE ROD SHIFTER	1
39	0180124	SCREW, 3/8-16X1.25 HHC	1
40	01499	NUT, 3/8-16 REGHXCTRLK	1
41	309637	BRACKET, SHIFT 5SP	1
42	0180124	SCREW, 3/8-16X1.25 HHC	1
43	120394	WASHER, FLAT .406X .81X.065	2
44	01499	NUT, 3/8-16 REGHXCTRLK	1
45	57157	WASHER, .750X.250 8P-TRANSAXLE	1
46	056255	SCREW, 1/4-28X .75 NYLHHC	1

0 Indicates STANDARD HARDWARE ITEMS.

MOTION DRIVE ASSEMBLY



**NOTE: ALWAYS USE ORIGINAL EQUIPMENT PARTS.**  
 Use of service/replacement parts other than original equipment parts may void your warranty.

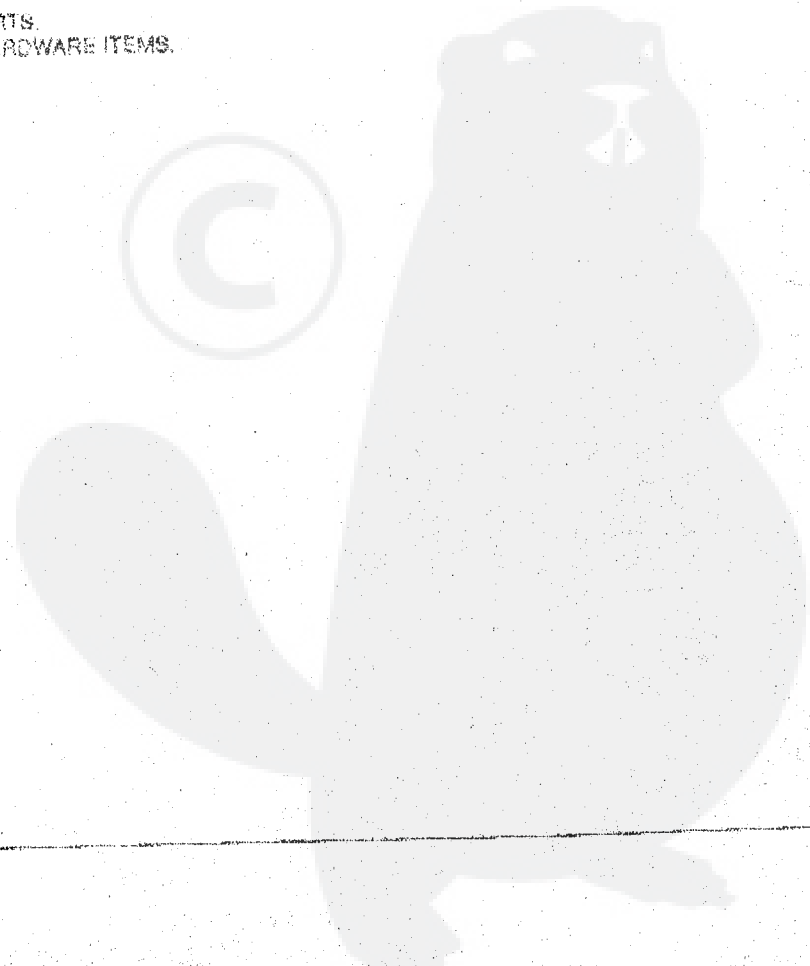
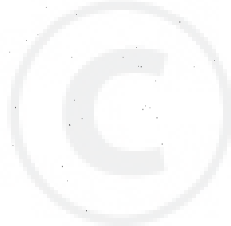
**ALL UNNUMBERED  
 ITEMS ARE INTERCHANGABLE  
 WITH OPPOSITE SIDE**

315501C

39" ALL WHEEL STEER MODEL B3560-810

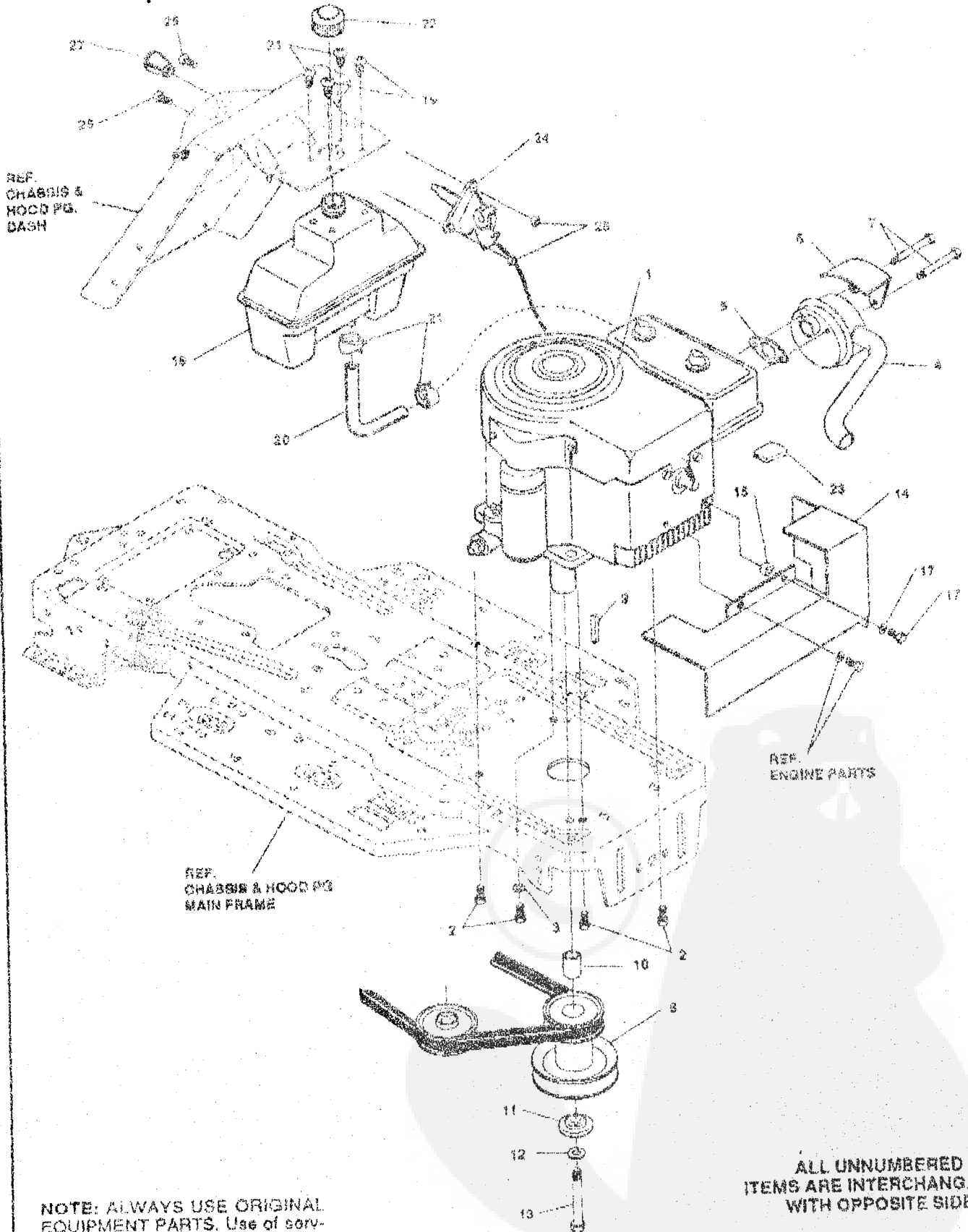
key#	part#	description	qty.
60	315359	GUIDE-BELT/DRAGLINK	1
61	0180079	SCREW, 5/16-18X1.50 HHC	1
62	45602	WASHER, FLAT .339X .87X.110	1
63	01498	NUT, 5/16-18 REGHEXCTRLK	1
64	303279	PLASTIC EXTRUSION-BELT GLIDE	1
65	300308	PEDAL ASSY, BRAKE/CLUTCH	1
66	57196	ROD, PIVOT .68 OD-4.44LG	1
67	57547	SPRING, BRAKE PEDAL	1
68	2069	WASHER, FLAT .504X .75X.050	3
69	20864	RING, RET E .39X.04TRU5133-50	2
70	48160	PAD, CLUTCH BRAKE	1
71	300164	ARM, IDLER TRACTION DR.	1
72	300783	BOLT, 6/16X 1.35 HHRH 5/16-18	1
73	45602	WASHER, FLAT .339X .87X.110	1
74	01498	NUT, 5/16-18 REGHEXCTRLK	1
75	30659	RETAINER, STRAP BELT	1
76	35374	PULLEY, IDLER V4L 3 08X .62	1
77	45892	BOLT, 3/8-16X1.50 CARR	1
78	01498	NUT, 3/8-16 REGHXCTRLK	1
79	57204	ROD, CLUTCH	1
80	57217	BRACKET, BRAKE ROD	1
81	20607	BOLT, 43TX .156 HHRH 5/16-18	1
82	45602	WASHER, FLAT .339X .87X.110	1
83	01498	NUT, 5/16-18 REGHEXCTRLK	1
84	313859	ROD, BRAKE P020 4WS LF 23.50	1
85	0271164	NUT, 5/16-18 HEXKEPS	1
86	01498	NUT, 5/16-18 REGHEXCTRLK	1
87	313660	SPRING, CLUTCH .113X.750X3.75	1
88		TIRE & RIM, PU 20-10XB WHIT134	2
89	24167	VALVE STEM	1
90	316687	RIM, WHEEL 20XB	1
91		REFER TO TIRE TREAD PAGE	
92	0120418	SCREW, 1/2-20X .50 HHC	6

\* ORDER INDIVIDUAL PARTS.  
 0 Indicates STANDARD HARDWARE ITEMS.



# 39" ALL WHEEL STEER MODEL

## ENGINE & CONTROL ASSEMBLY



**NOTE: ALWAYS USE ORIGINAL EQUIPMENT PARTS.** Use of service/replacement parts other than original equipment parts may void your warranty.

315457A

Part No 318076

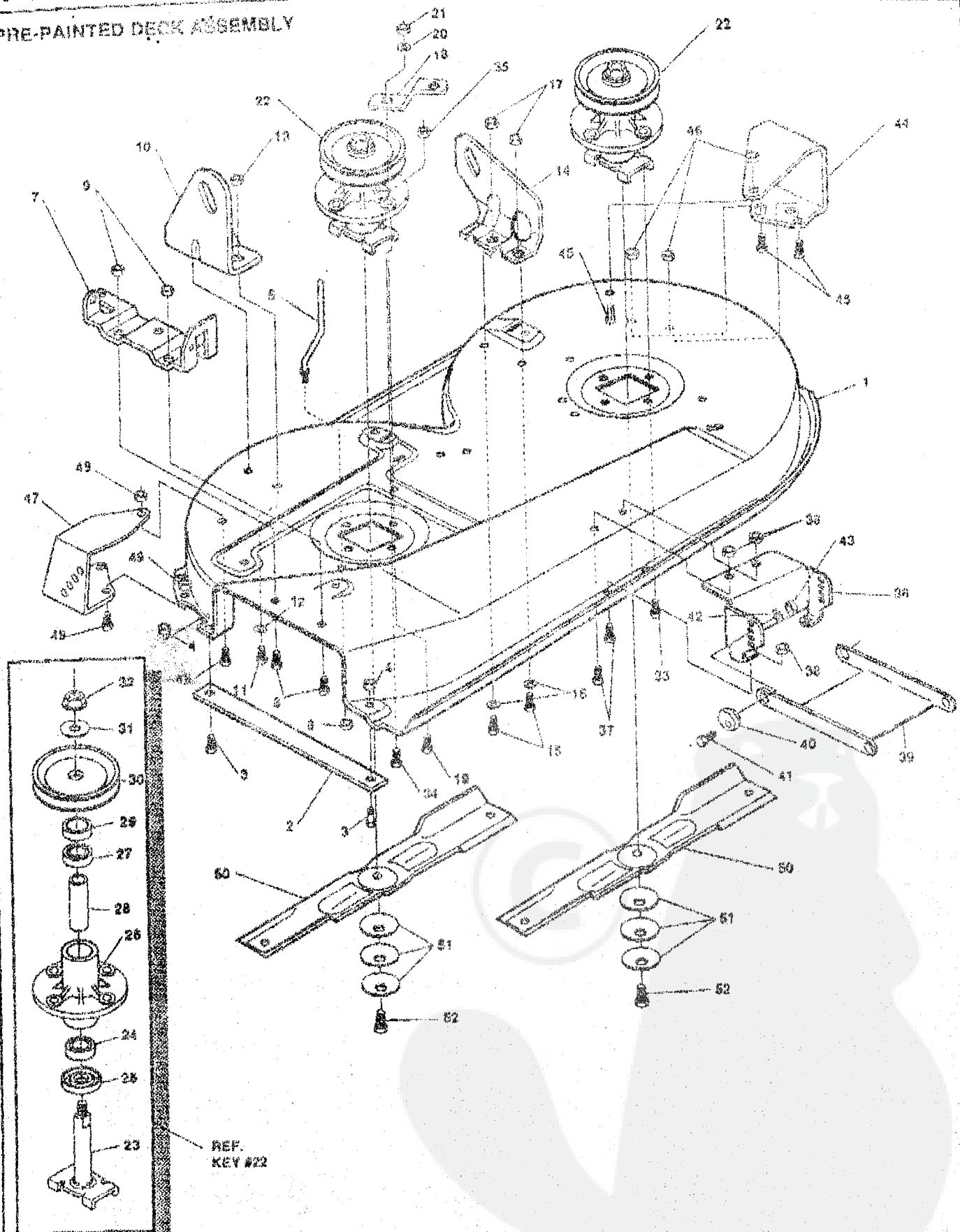
key#	part#	description	qty
1	ENGINE	12 HP B&S VC (SEE ENGINE MANUAL)	1
2	060947	SCREW, 3/8-16X1.25 WASHTAP	4
3	138489	WASHER, EXLK .384X.69X.04	1
4	303267	MUFFLER, LO TONE NELSON EXPORT	1
5	45708	GASKET, MUFFLER	1
6	54787	SHIELD, HEAT FOR ROUND MUFFLER	1
7	0173063	SCREW, 8/19-18X3.50 HHC	2
8	56361	PULLEY ASSY 4.75OFFS 3.5DIA	1
9	57791	KEY, SQUARE .250SQX5.00	1
10	304246	SPACER, 1.01X1.404 ENGIN PULLEY	1
11	56431	WASHER, REGSP1LK.459X.78X.12	1
12	120363	SCREW, 7/16-20X5.00 HHC	1
13	0428644	HEAT SHIELD ASSY	1
14	308544	SPACER, .928 X .750 X .312	1
15	41462	WASHER, REGSP1LK.263X.49X.07	1
16	120380	SCREW, 1/4-20X .88 HHC	1
17	0160021	TANK, FUEL 1 GAL	1
18	314909	SCREW, 1/4-10X .75PHNTAP	4
19	048050	GAS LINE 2SID BULK LENGTH	6IN
20	47452	CLAMP, FUEL LINE	2
21	48672	GAS CAP 1-1/2-7 THD	1
22	48704	ENGINE SPEED REDUCER	1
23	302967	CONTROL, THROTTLE	1
24	56634	SCREW, 10-24X .50 SLHMA	2
25	036291	NUT, #10-24 HEXKEPS	2
26	0271166	KNOB, ROUND THROTTLE	1
27	50807		

0 Indicates STANDARD HARDWARE ITEMS.



# 39" ALL WHEEL STEER MODEL B3560-810

## PRE-PAINTED DECK ASSEMBLY



**NOTE: ALWAYS USE ORIGINAL EQUIPMENT PARTS.** Use of service/replacement parts other than original equipment parts may void your warranty.

**ALL UNNUMBERED ITEMS ARE INTERCHANGABLE WITH OPPOSITE SIDE**

316680A

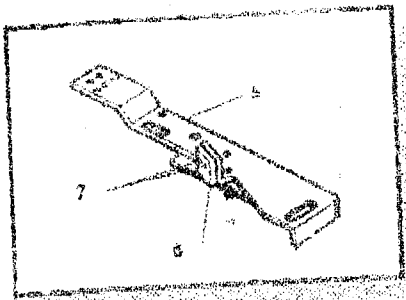
Part No. 3180/G

key#	part#	Description	Qty.
1	317325	DECK, 39"SD MOWER	1
2	57314	BAR, SKID	1
3	126216	BOLT, 5/16-18X .75 CARB	2
4	01498	NUT, 5/16-18 REGHEXOTRLK	2
5	57318	GUIDE, BELT 5/16-18 THD	1
6	01498	NUT, 5/16-18 REGHEXOTRLK	1
7	57360	BRACKET, CHUTE	1
8	0120934	SCREW, 5/16-18X .50 HHC	2
9	01498	NUT, 5/16-18 REGHEXOTRLK	2
10	58250	LIFT BRACKET, REAR RH	1
11	0150077	SCREW, 5/16-18X .75 HHC	2
12	120393	WASHER, FLAT .344X .69X .065	2
13	01498	NUT, 5/16-18 REGHEXOTRLK	2
14	58251	BRACKET, DECK LIFT REAR LH	1
15	0150077	SCREW, 5/16-18X .75 HHC	2
16	120393	WASHER, FLAT .344X .69X .065	2
17	01498	NUT, 5/16-18 REGHEXOTRLK	2
18	015302	BRACKET, IDLER SUPPORT	1
19	0900345	SCREW, 5/16-18X1.99 WATAP	1
20	120393	WASHER, FLAT .344X .69X .065	1
21	01498	NUT, 5/16-18 REGHEXOTRLK	1
22	56424	QUILL ASSY, 36/38/40/43	2
23	56425	SHAFT/SADDLE 36"	1
24	49552	BRNG, BALL	1
25	50316	DUST SHIELD	1
26	55547	QUILL CASTING	1
27	49552	BRNG, BALL	1
28	50918	SPACER, 3.797LX .650DX .980D	1
29	51449	SPACER, .458LX .980DX .872ID	1
30	56390	PULLEY, 26/36" QUILL	1
31	56365	SPECIAL WASHER	1
32	01252	NUT, 7/16-20 WDFLLK	1
33	050634	SCREW, 5/16-18X .85 WANNAP	6
34	0300345	SCREW, 5/16-18X1.99 WATAP	1
35	01498	NUT, 5/16-18 REGHEXOTRLK	1
36	58315	LIFT SUPPORT FRONT DECK	1
37	0150075	SCREW, 5/16-18X .63 HHC	4
38	01498	NUT, 5/16-18 REGHEXOTRLK	4
39	58305	LINK BRACKET, DECK FR	1
40	58247	ADJUSTING NUT	2
41	0122017	SCREW, 5/16-18X1.00 HHC	2
42	35214	WASHER, FLAT .328X1.06X .062	2
43	01498	NUT, 5/16-18 REGHEXOTRLK	2
44	300103	WHEEL BRKT, LH	1
45	0150075	SCREW, 5/16-18X .63 HHC	3
46	01498	NUT, 5/16-18 REGHEXOTRLK	3
47	300102	WHEEL BRKT, RH	1
48	0150075	SCREW, 5/16-18X .63 HHC	3
49	01498	NUT, 5/16-18 REGHEXOTRLK	3
50	58190	BLADE, 10.68 HI-LIFT	2
51	2483	WASHER, .381DX1.25DX .07 BELLVIL	8
52	099573	SCREW, 3/8-24X1.00 NYLHHC	2

0 Indicates STANDARD HARDWARE ITEMS

# 39" ALL WHEEL STEER MODEL B3560-810

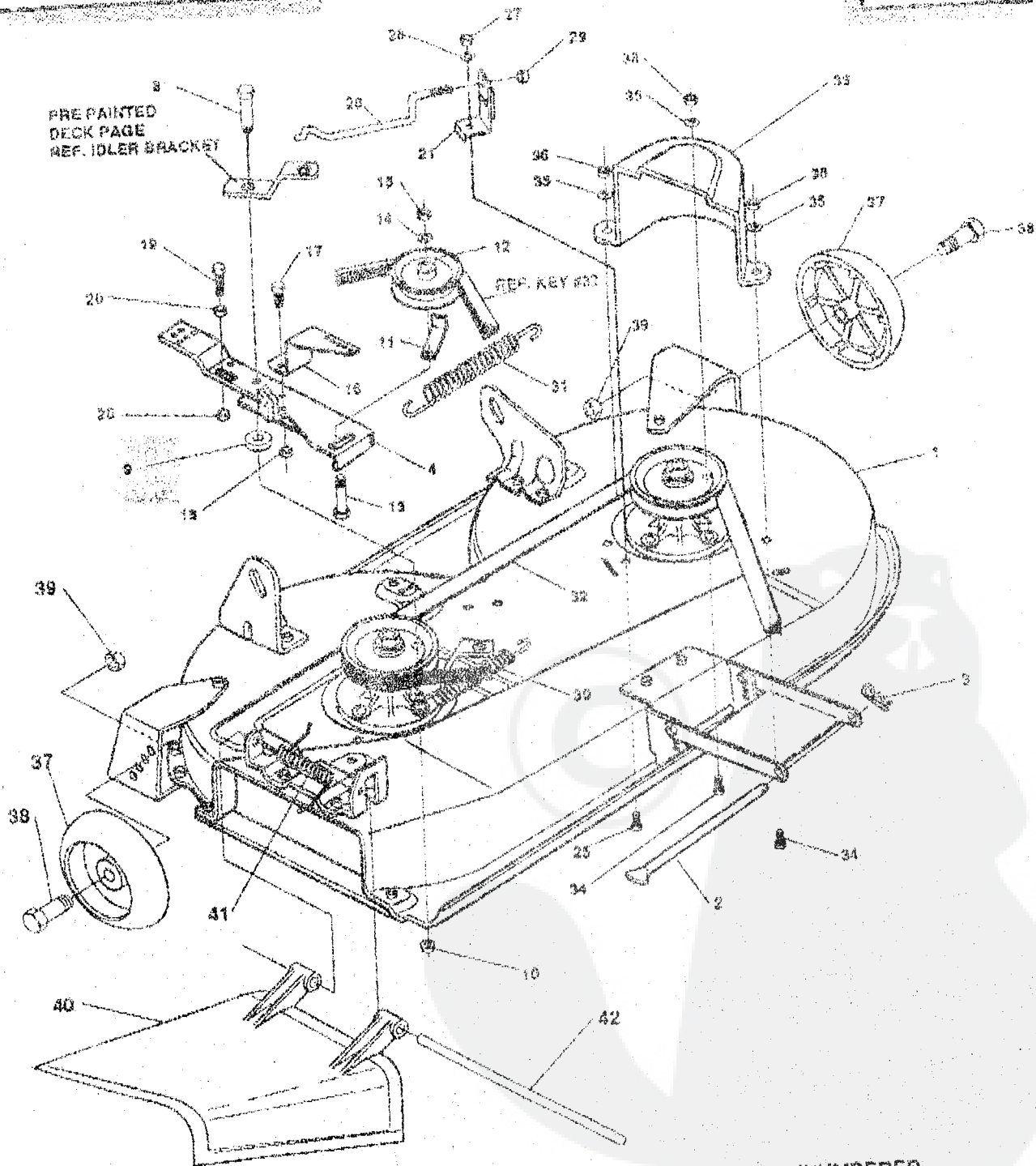
## FINAL DECK ASSEMBLY



SEE DWG. 316590 FOR PART ASSY OF PAINTED DECK

REF KEY #4

REF KEY #37



**NOTE: ALWAYS USE ORIGINAL EQUIPMENT PARTS.**  
 Use of service/replacement parts other than original equipment parts may void your warranty.

**ALL UNNUMBERED ITEMS ARE INTERCHANGABLE WITH OPPOSITE SIDE**

316597A

Part No 311076

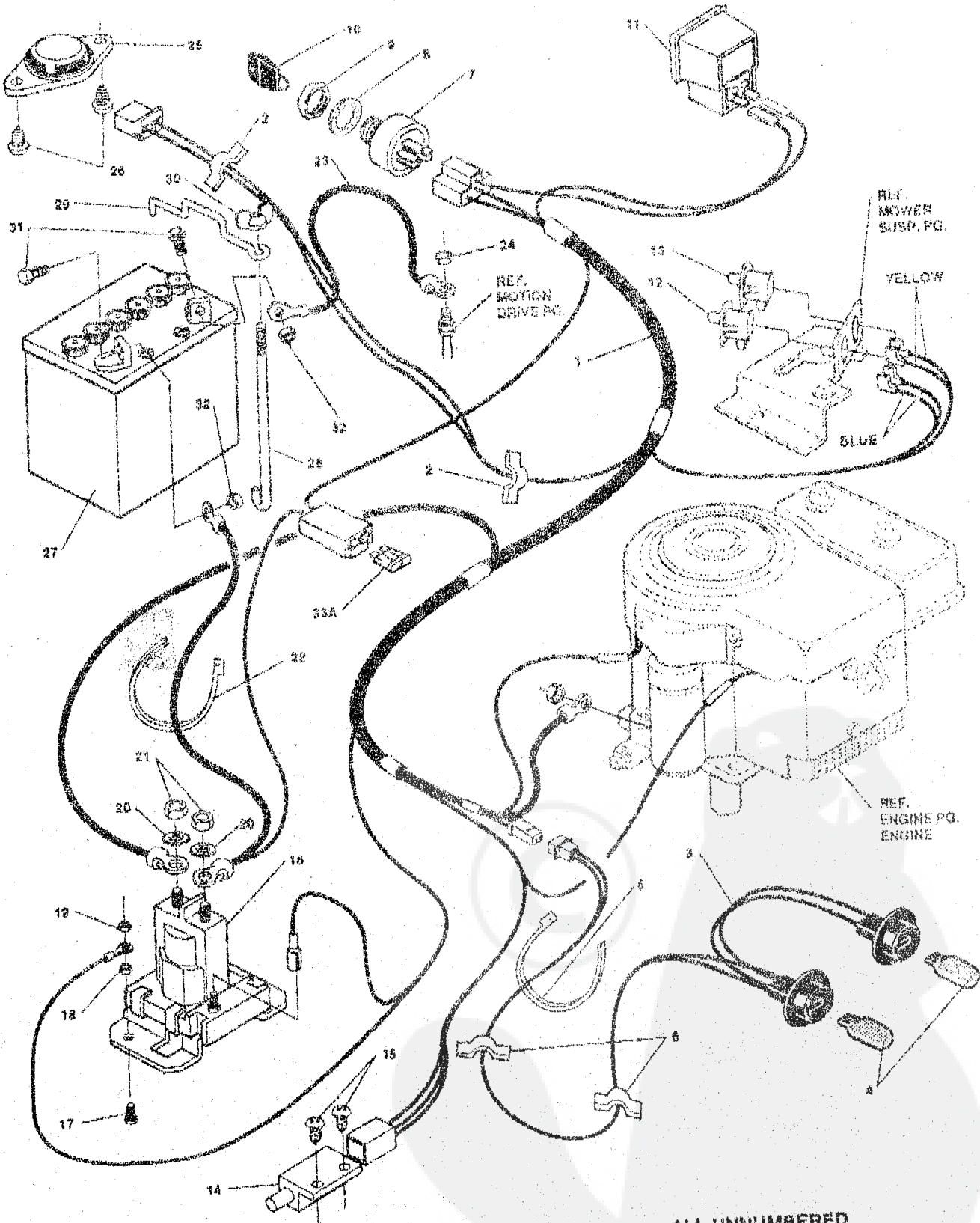
39" ALL WHEEL STEER MOUCL 53000-010

key#	part#	description	qty.
1		ASSY DECK 33SD 2-DECKWH	1
2	58300	ROD, DECK HITCH	1
3	8260	PIN, HAIR .091 DIA X 1.68	1
4	300491	BRACKET, IDLER ARM BRAKE	1
5	300490	IDLER ARM 38,38,39, & 45	1
6	300973	BRAKE PAD - HARD	2
7	135624	RIVET, TRSET .185DIA X .41	1
8	300180	BOLT, 5/16 X 1.68 HHSH 3/8-16	1
9	306810	WASHER, FLAT .381X1.00X.125	1
10	945171	NUT, 3/8-16 HWDFL WHIZ NUT	1
11	1346	BELT RETAINER 2.55 OD	1
12	310320	PULLEY, IDLER BFF 4.00	1
13	57325	BOLT, 3/8-16X2.00 CARR	1
14	120382	WASHER, REGSPTLK 393X.68X.10	1
15	0120377	NUT, 3/8-16 REGHX	1
16	9401	BRACKET, EXTENSION IDLER	1
17	0180077	SCREW, 5/16-18X.75 HHC	1
18	01498	NUT, 5/16-18 REGHEXCTRLK	1
19	0121954	SCREW, 1/4-20X2.00 HHC	3
20	0271172	NUT, 1/4-20 REGHEXKEPS	1
21	303247	ASSY, BLADE BRAKE	1
22	12542	BRAKE ARM	1
23	300973	BRAKE PAD	2
24	135624	RIVET, TRSET .185DIA X .41	1
25	0120328	SCREW, 5/16-18X.63 HHC	1
26	120393	WASHER, FLAT .344X.69X.065	1
27	01498	NUT, 5/16-18 REGHEXCTRLK	1
28	300316	ROD, BRAKE RELEASE 14.7 39	1
29	01502	NUT, 1/4-20 REGHEXCTRLK	1
30	35410	SPRING, 0.71 X .62 X 4.37	1
31	300473	SPRING, TENSION	1
32	300680	BELT, V 5L 17.75	1
33	302833	GUARD, BELT LH	3
34	120228	SCREW, 5/16-18X.63 HHC	3
35	120393	WASHER, FLAT .344X.69X.065	3
36	01498	NUT, 5/16-18 REGHEXCTRLK	2
37	302611	WHEEL, SD	2
38	23763	BOLT, .500X1.390 HHSH 3/8-16	2
39	01499	NUT, 3/8-16 REGHXCTRLK	1
40	57016	CHUTE-36SD, 39SD	1
41	314975	SPRING, TORSION	1
42	57317	PIVOT ROD, CHUTE	1

\* Order Individual Parts  
 0 Indicates STANDARD HARDWARE ITEMS.

# 39" ALL WHEEL STEER MODEL B3560-810

## ELECTRICAL ASSEMBLY



**NOTE: ALWAYS USE ORIGINAL EQUIPMENT PARTS.**  
 Use of service/replacement parts other than original equipment parts may void your warranty.

**ALL UNNUMBERED  
 ITEMS ARE INTERCHANGABLE  
 WITH OPPOSITE SIDE**

315441A

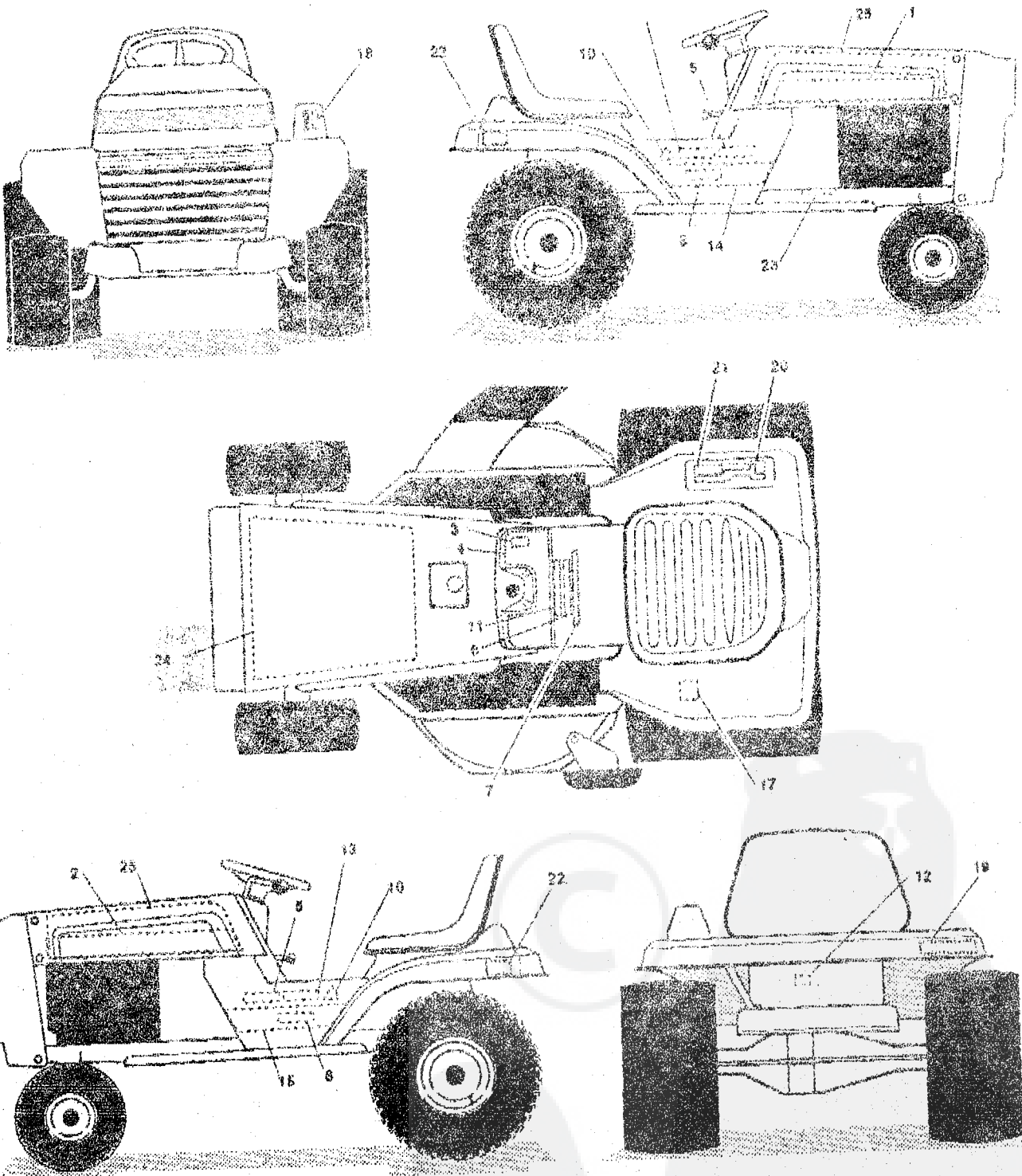
Part No. 318076

key#	part#	description	qty.
1	300814	WIRE HARNESS 12HP BAS BUS LF	1
2	41482	CLIP, 1.380LG .205ID PRESS WIRE	2
3	303064	ASSY, LIGHT WIRE-1/4 TURN	1
4	52572	BULB HEADLAMP	2
5	57444	TIE, CABLE BLACK NYLON 5.62L	1
6	41482	CLIP, 1.380LG .205ID PRESS WIRE	2
7	300607	SWITCH, IGNITION & LIGHTS	1
8	130557	WASHER, REGINTLK 640X1.1X .05	1
9	048140	NUT, 5/8-32 HX4D IGN SWIT	1
10	300926	KEY, IGNITION SWITCH	1
11	300133	AMMETER, PANEL MOUNT	1
12	300920	SWITCH, SNAPMNT NO. 0554.116	1
13	58277	SWITCH, SNAPMNT NO. 0554.166	1
14	57211	SWITCH, SCR MNT SP	1
15	007220	SCREW, #12 X .50 PHPHNTAP	2
16	53716	SOLENOID, NEW CLUM	1
17	0187745	SCREW, 1/4-20X .75 HX5EMMA	2
18	01802	NUT, 1/4-20 REGHEXOTRLK	2
19	0271172	NUT, 1/4-20 REGHEXKEPS	1
20	138485	WASHER, EXLK 320X.61X .03	2
21	0120358	NUT, 5/16-24 REGHEX	1
22	57444	TIE, CABLE BLACK NYLON 5.62	1
23	56311	WIRE, GROUND, 12 FT	1
24	0271184	NUT, 5/16-18 HEXKEPS	1
25	57547	SWITCH, SEAT	1
26	0180505	SCREW, 1/4-20X .38PHPHNMA	2
27	302257	BATTERY 12V 7 PLATE/	1
28	57531	ROD, BATTERY	1
29	57552	ROD, BATTERY, TOP	1
30	310067	SMALL PLASTIC WING NUT 1/4-20	1
31	0120854	SCREW, 1/4-20X .63 HHC	2
32	0271172	NUT, 1/4-20 REGHEXKEPS	2
33A	** 302931	FUSE, 15 AMP SPADE TYPE	1
33B	** 49211	FUSE, 15 AMP CYLINDRICAL	1

\*\*Cylindrical or Spade type fuse included in wire assembly  
 0 indicates STANDARD HARDWARE ITEMS.

# 39" ALL WHEEL STEER MODEL B3560-180

## DECALS



**NOTE: ALWAYS USE ORIGINAL EQUIPMENT PARTS.**  
 Use of service/replacement parts other than original equipment parts may void your warranty.

**ALL UNNUMBERED  
 ITEMS ARE INTERCHANGABLE  
 WITH OPPOSITE SIDE**

317781A

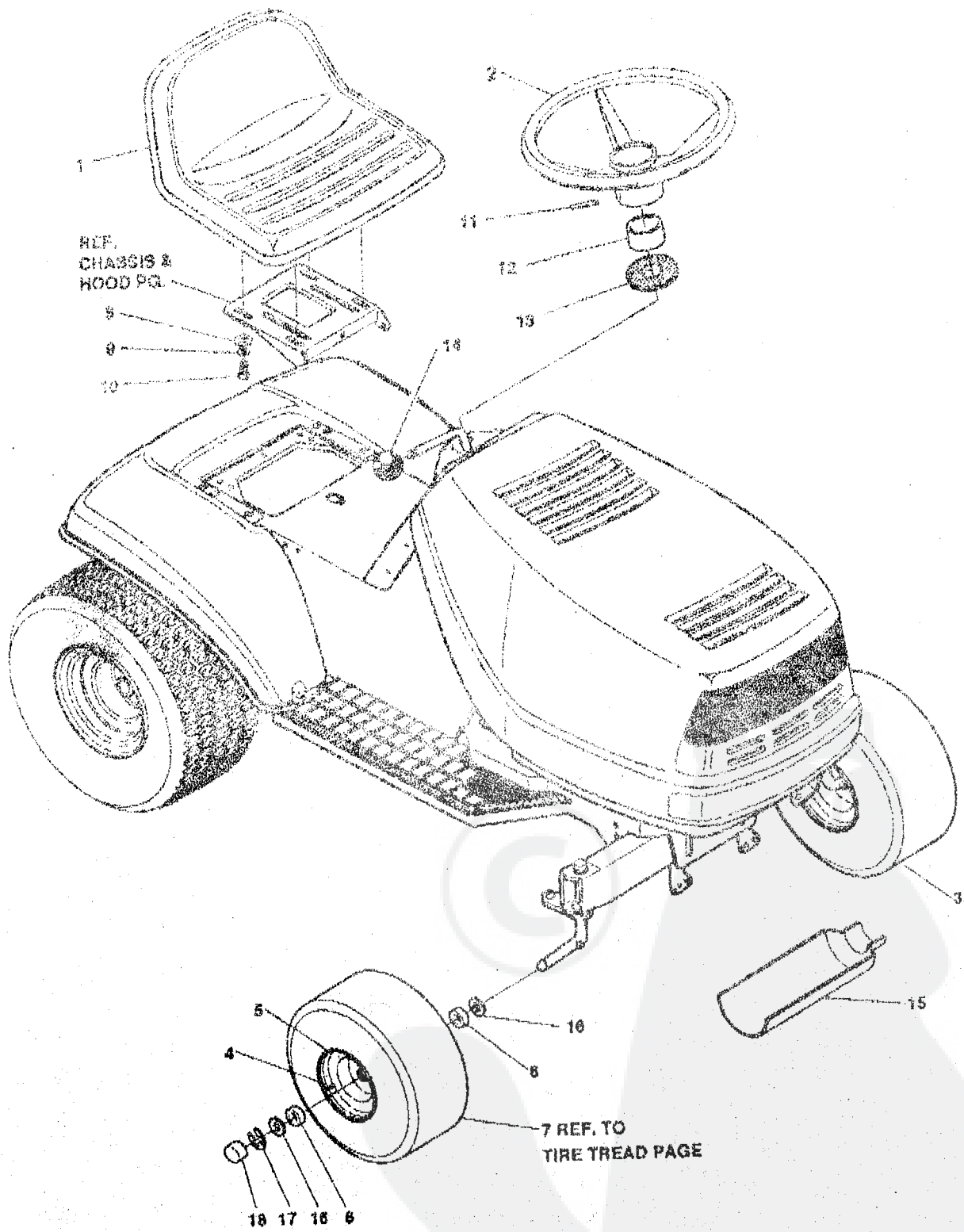
## 39" ALL WHEEL STEER MODEL B3560-810

key#	part#	description	qty
1	314456	DECAL, HOODSIDE RH	1
2	314457	DECAL, HOODSIDE LH	1
3	08490	DECAL, BLADE ENGAGE EUROPE	1
4	307098	DECAL, DASH, PLAIN BLACK AMM	1
5	68002	DECAL, WARNING, FRENCH/GERMAN	2
6	68504	DECAL, INSTRUCT CONSOLE TOP GER	1
7	68505	DECAL, INSTRUCT CONSOLE TOP FR	1
8	300442	NAMEPLATE, 12/39	2
9		REFERENCE ONLY	1
10	305770	DECAL, CAUTION TRIANGLE EUROPE	2
11	307383	DECAL, INSTR. CONSOLE TOP ENGL	1
12	310436	DECAL, FRENCH SAFETY CERT.	1
13	310559	DECAL, DANGER ENGLISH	2
14	314452	DECAL, CONSOLE RH LARGE FRAME	1
15	314453	DECAL, CONSOLE LH LARGE FRAME	1
16		REFERENCE ONLY	1
17	68501	DECAL, BLADE HEIGHT ADJ. EUROPE	1
18	301897	DECAL, LIFT DECK BLADE HEIGHT	1
19	302685	NAMEPLATE SM. DYNABYNOMA	1
20	311394	DECAL, SHIFT REV/NEUTRAL	1
21	311305	DECAL, SHIFTER POSITION F4260-6	1
22	314118	DECAL, ALL WHEEL STEER	2
23	55503	DECAL, BRAKE/CLUTCH EUROPE	1
24	55505	PAD, FOAM HOOD TOP	1
25	55506	PAD, FOAM HOOD SIDE	2



# 39" ALL WHEEL STEER MODEL B3560-810

## CUSTOMER ASSEMBLY



317055A

Part No. 318076

39" ALL WHEEL STEER MODEL B3560-810

## CUSTOMER ASSEMBLY VIEW

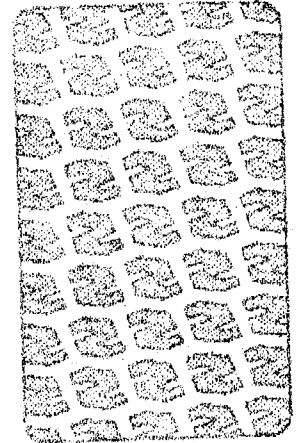
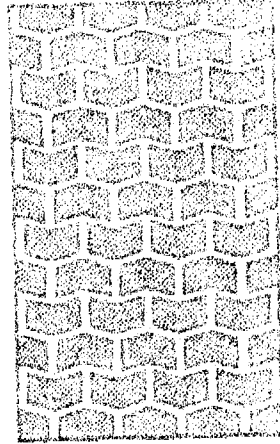
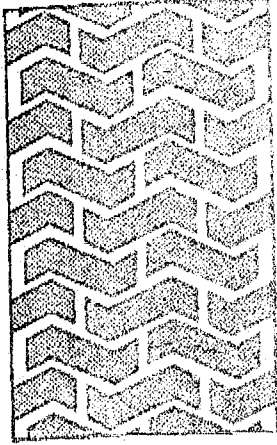
### 316177 PARTS BAG ASSY QTY1

key#	part#	description	qty
1	57454	SEAT, 460 MICH	1
2	306654	WHEEL, STEERING, 14 EURO	1
3	.	TIRE & RIM, PU 15X6.0X6 TURF	2
4	24187	VALVE STEM	1
5	39829	WHEEL W/BRG.	1
6	39979	BEARING, PL1.380D X .753ID PM	2
7		REFER TO TIRE TREAD PAGE	
8	120392	WASHER, FLAT .344X .68X.055	4
9	120038	WASHER, HVSPTLK .029X.60X.09	4
10	122007	SCREW, 5/16-18X .75 HMC	4
11	456378	PIN, SPRING, 2.600DIA X 2.00LG NYPL	1
12	311465	COVER, STEERING SHAFT	1
13	301413	SPACER	1
14	55514	SHIFT KNOB	1
15	54873	TROUGH, OIL DRAIN	1
16	642	WASHER, FLAT .756X1.31X.075	4
17	36625	RING, RETEX .57X.05TRUS133-75	2
18	40394	CAP, 1.600ID X 7/8LG HUB	2

\* Order Individual Parts.

39" ALL WHEEL STEER MODEL B3560-810

# TREAD PATTERNS



TIRE SIZE	"A"	"B"	"C"	"D"
11 X 4.00 - 5	42295			
13 X 5.00 - 6	41060			
15 X 6.00 - 6	301140	316702	39830	313952
16 X 6.50 - 8		41081		314539
18 X 6.50 - 8				
18 X 9.50 - 8		316701		313950
20 X 8.00 - 8	314584			
20 X 10.00 - 8	58276			313565
20 X 10.00 - 10		55893		
23 X 9.50 - 12	314370			
23 X 9.50 - 12		53655		

## ACCESSORIES

Contact the dealer where your tractor was purchased for the available accessories. If you are unable to contact the dealer, write to the address on the front cover of this manual.

### Rear Engine Rider

Model	Description
5708-16	Bagger - Fits 32" Side Discharge
5708-17	Bagger - Fits 35" Side Discharge
5708-02	Front Weight Box - holds 35 lbs.
5648-16	Lawn Sweeper w/dump Release

### Lawn Tractor

Model	Description
5708-22	Bagger - Fits 30" Side Discharge
5708-13	Bagger - Fits 35", 38", 39" & 45" Side Discharge
5705-04	36" Two-Stage Snowblower - Fits 35", 38", 39", & 45" Side Discharge
5661-06	42" Snowblade - Fits 35", 38", 39", & 45"
5592-00	Tire Chains - 18" x 6.50"
5593-00	Tire Chains - 19" x 9.50" & 20" x 9"
5672-01	Wheel Weights - Front - 1 pr. w/mtg. hdw. - Fits 15" tires
5673-02	Wheel Weights - Rear - 1 pr. w/mtg. hdw. - Fits 18" & 20" tires
5709-03	Front Weights - Fits 30" & 32" Side Discharge
5648-16	Lawn Sweeper w/dump Release

### Garden Tractor - Light Ground Engaging

Model	Description
5708-19	Bagger - Fits 36", 38", 39", & 45" Side Discharge
5705-04	36" Two-Stage Snowblower - Fits 36", 38", 39", & 45"
5661-06	42" Snowblade - Fits 36", 38", 39", & 45"
5672-01	Wheel Weights - Front - 1 pr. w/mtg. hdw. - Fits 15" tires
5673-02	Wheel Weights - Rear - 1 pr. w/mtg. hdw. - Fits 18" & 20" tires
5648-16	Lawn Sweeper w/dump Release
5667-02	Sleeve Hitch - w/lift bar - Fits 45"
5668-01	Adaptor (sleeve hitch) for use w/20" tires
5706-00	Tire Chains - 20" x 10"
5671-00	Tire Chains - 23" x 9.50"
5672-02	Wheel Weights - Front - 1 pr. w/mtg. hdw. - Fits 16" tires
5673-00	Wheel Weights - Rear - 1 pr. w/mtg. hdw. - Fits 23" tires
5674-01*	10" One Bottom Moldboard Plow
5675-01*	Cultivator - 7 row - Adj. 6" - 42" width
5676-01*	Disc Harrow - 8" & 11" disc - Adj. width & disc angle
5677-02*	Tiller - 5 H.P. Self-Powered - 28" width

### Four Wheel Steer

Model	Description
5708-14	Bagger - Fits 40" & 46" Side Discharge
5705-05	42" One-Stage Snowblower - Fits 40" & 46"
5661-07	48" Snowblade - Fits 40" & 46"
5709-04	Rear Weight Box for 40" & 46"
5648-16	Lawn Sweeper w/dump Release
5706-00	Tire Chains - 20" x 10"
5671-00	Tire Chains - 23" x 9.50"
5672-02	Wheel Weights - Front - 1 pr. w/mtg. hdw. - Fits 16" tires
5673-00	Wheel Weights - Rear - 1 pr. w/mtg. hdw. - Fits 23" tires
5672-01	Wheel Weights - Front - 1 pr. w/mtg. hdw. - Fits 15" tires
5673-02	Wheel Weights - Rear - 1 pr. w/mtg. hdw. - Fits 18" & 20" tires

### Four Wheel Steer Garden Tractor

Model	Description
5667-04	Sleeve Hitch - w/lift bar - Fits 46"
5674-01*	10" One Bottom Moldboard Plow
5675-01*	Cultivator - 7 row - Adj. 6" - 42" width
5676-01*	Disc Harrow 8" & 11" Disc - Adj. width & disc angle
5677-02*	Tiller 5 H.P. Self-Powered - 28" width
5648-16	Lawn Sweeper w/dump Release

\*Requires a sleeve hitch