

REPAIR PARTS MANUAL

43" - 14 H.P. LAWN TRACTOR

MODEL B3583-220

ONE YEAR LIMITED WARRANTY

For one (1) year from date of purchase by the first consumer for residential use (thirty (30) days commercial use), NOMA Outdoor Products Incorporated warrants that it will replace free of charge, including labor, any original part of any NOMA Outdoor Products Incorporated product found to be defective by any authorized Service Dealer or the factory, except the battery which is warranted for ninety (90) days from date of purchase.

This warranty does not cover engine, transmission, transaxle or differential (these items are covered by their manufacturer's own warranty). This warranty does not cover parts that have failed due to normal wear or parts that have failed subject to misuse or abuse. Transportation of the unit or part to and from an authorized Service Dealer or factory is the responsibility of the owner.

A step by step explanation as to what procedure should be followed for this warranty is:

1. If a part becomes defective, contact the store where the unit was purchased for the name and address of the authorized Service Dealer nearest to you.
2. If you cannot locate an authorized Service Dealer, write Service Department of NOMA Outdoor Products Incorporated for the name and address of the authorized Service Dealer in your area or call the Service Department at 1-901-422-1690.
3. Return the defective product, along with proof of purchase to such authorized Service Dealer for replacement of any defective part where covered by this warranty.

There is no other express warranty. Implied warranties, including those of merchantability and fitness for a particular purpose are limited to One (1) year from date of purchase. Liability for incidental or consequential damages are excluded.

Some states do not allow limitations on how long an implied warranty lasts, so the above exclusion may not apply to you. Some states do not allow the exclusion of incidental or consequential damages, so the above exclusion may not apply to you. This warranty gives you specific legal rights, and you may have other rights which vary from state to state.

NOMA Outdoor Products Incorporated

Call 8000

Jackson, TN 38308-8000

UNIT PARTS AND SERVICE

This manual contains instructions for safety, assembly and maintenance. Read this manual carefully and completely so that you will know proper assembly, use and care of your unit. Also fill in and mail the registration card packed with the unit. For service other than covered in this manual, contact an authorized service dealer. A nationwide parts and service organization has been established to provide locally available parts and service. A list of authorized parts distributors has been included in this manual. When ordering repair parts, always give the following information: 1. The Part Name; 2. The Part Number; 3. The Quantity desired; 4. The Full (eight digit) Model Number of the unit. The model number will be found on a plate attached to the unit.



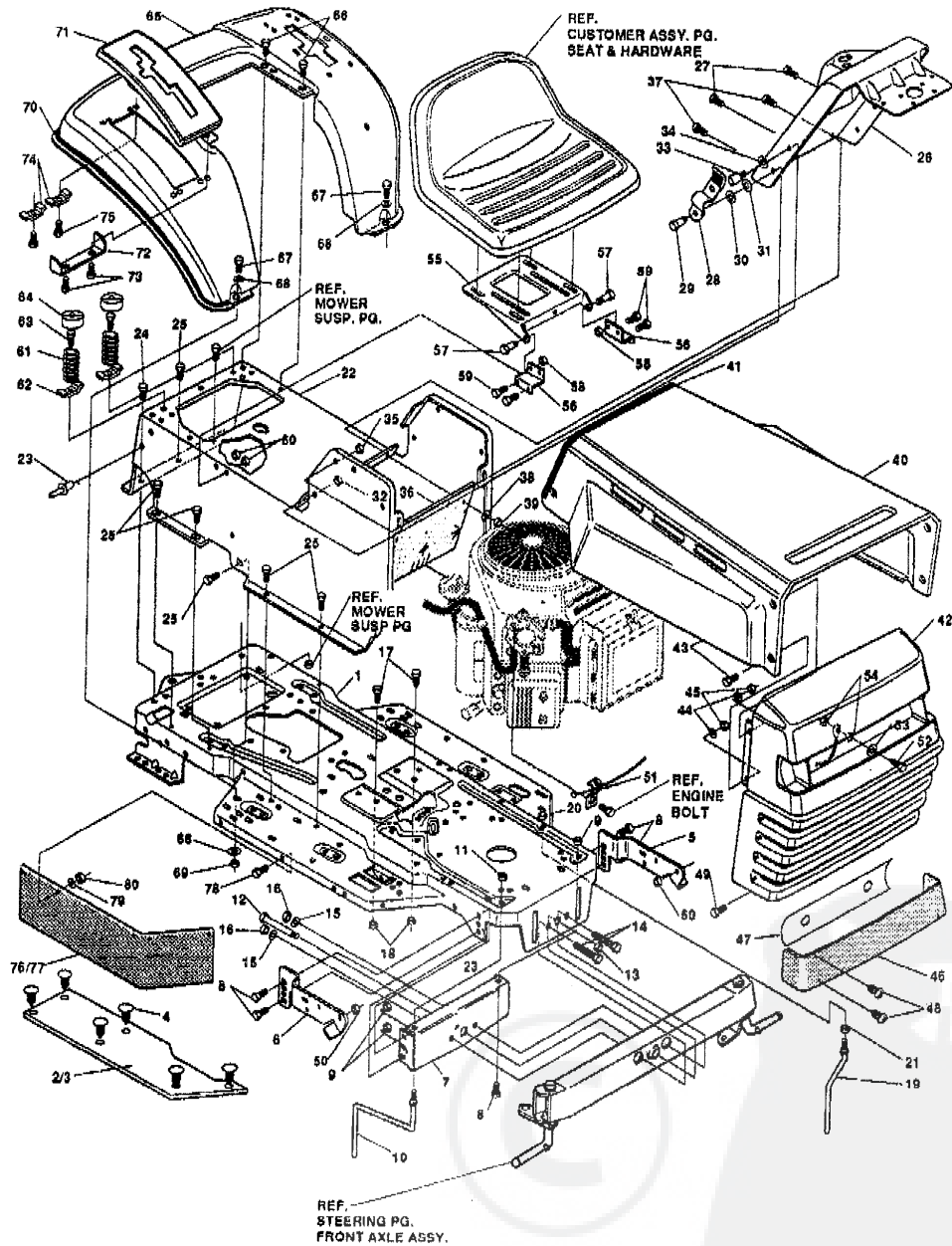
Look for this symbol. It means - ATTENTION! BECOME ALERT! A HAZARD TO OPERATOR, BYSTANDER, PROPERTY OR EQUIPMENT MAY EXIST.

NOMA Outdoor Products Incorporated
Call 8000
Jackson, TN 38308-8000

Part No. 318096

191

CHASSIS & HOOD ASSEMBLY



NOTE: ALWAYS USE ORIGINAL EQUIPMENT PARTS. Use of service/replacement parts other than original equipment parts may void your warranty.

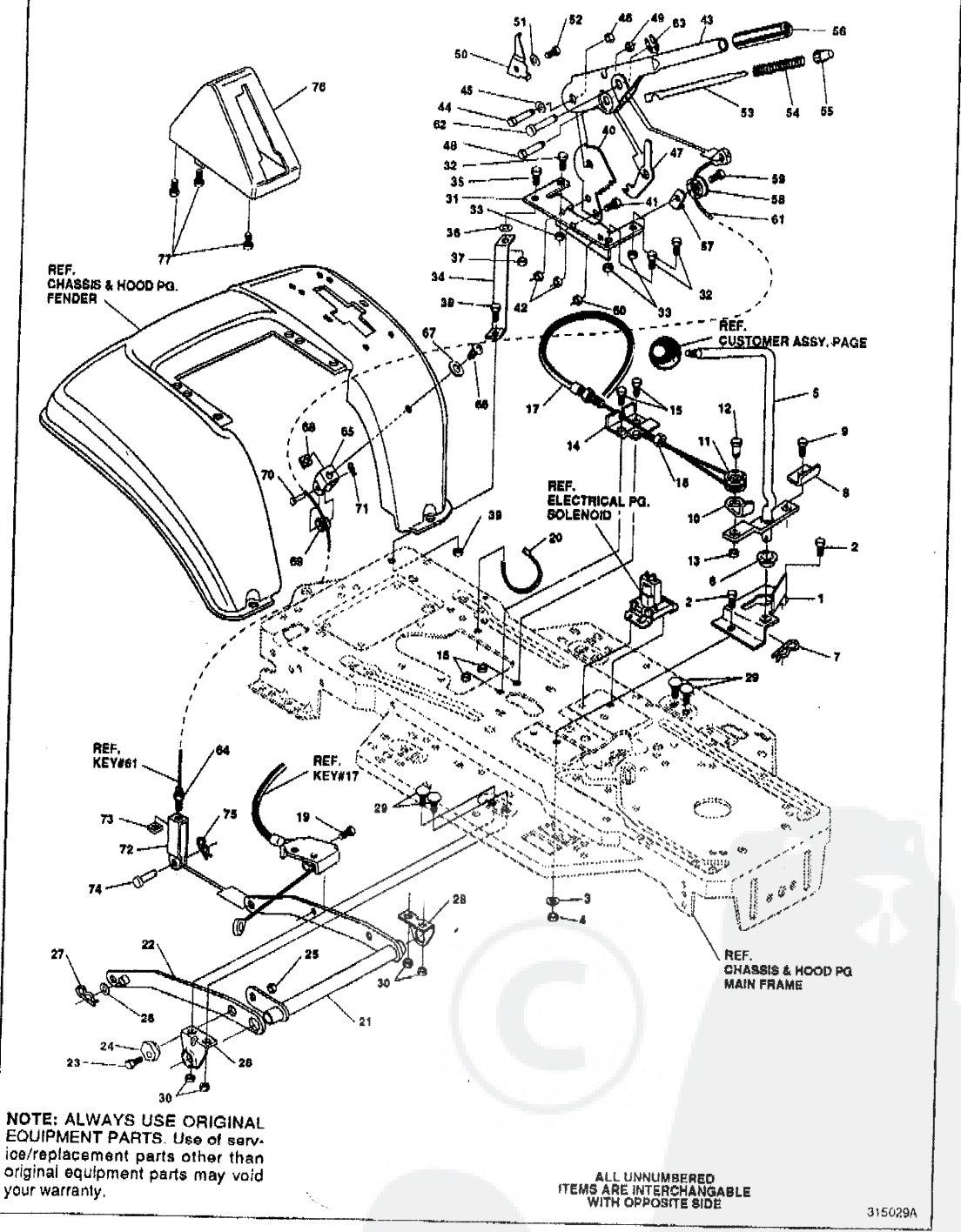
ALL UNNUMBERED ITEMS ARE INTERCHANGABLE WITH OPPOSITE SIDE

318075A

key#	part#	description	qty.
1	315914	FRAME,LF P920F4380 DRILLED	1
2	310006	FOOTPAD,LH	1
3	310006	FOOTPAD,RH	1
4	309235	FASTENER, RATCHET	12
5	319047	BRKT,GRILL LH	1
6	313048	BRKT,GRILL RH	1
7	68361	BRACKET, FRONT AXLE	1
8	66030	SCREW, 5/16-18X.75WDFLLK	5
9	55273	NUT, 5/16-18 HWDFLLK	5
10	300440	GUIDE, BELT, RIDER	1
11	1498	NUT, 5/16-18 REGHEXCTRLK	1
12	908207	BOLT, .825X2.18 HSSH 1/2-13	1
13	308908	NUT, 1/2-13 HEXJAM CTRLK	1
14	122207	SCREW, 3/8-16X3.00 HHC	2
15	2483	WASHER, .39IDX1.25DX.07 BELLVIL	2
16	1498	NUT, 3/8-16 REGHEXCTRLK	2
17	120228	SCREW, 5/16-18X.88 HHC	2
18	1498	NUT, 5/16-18 REGHEXCTRLK	2
19	300635	GUIDE,BELT SHORT 15" WHEEL	1
20	124824	NUT, 5/16-18 HEXJAM	1
21	271180	NUT, 3/8-16 HEXKEPS	1
22	310638	CONSOLE,GENERIC H14-16 SCF	1
23	48763	RIVET, POP	1
24	35497	SCREW, 5/16-18X .50 WAHHTAP	1
25	995346	SCREW, 1/4-20X .50 WAHHTAP	12
26	310664	DASHBOARD	1
27	995346	SCREW, 1/4-20X .50 WAHHTAP	2
28	87159	LATCH, .94WDX.047 ASSY HOOD	2
29	9482	BOLT, .375X .156 HSSH 5/16-18	2
30	120394	WASHER, FLAT .406X .81X .085	2
31	120393	WASHER, FLAT .344X .69X .085	2
32	1498	NUT, 5/16-18 REGHEXCTRLK	2
33	53446	PIN, 5/16-18 HOOD LATCH	2
34	138536	WASHER, REGINTLK .300X .61X .03	2
35	45174	NUT, 5/16-18 HEXWDFLLK WHIZ	2
36	312308	BAFFLE CONSOLE SOUND EXPORT	1
37	300314	SCREW, 1/4-20X .88WAHHTAP	2
38	120392	WASHER, FLAT .281X .63X .085	2
39	1502	NUT, 1/4-20 REGHEXCTRLK	2
40	318527	HOOD, LF H-20 DYNA/PRO	1
41	47453	EDGING,WIDE BLK	27.5'
42	314478	GRILLE DYNA-PRO G-17	1
43	274672	SCREW, 1/4-20X .63 WAHHC	4
44	120393	WASHER, FLAT .344X .69X .085	4
45	1502	NUT, 1/4-20 REGHEXCTRLK	4
46	302333	LENS, SMOKED W/TAB NO LOGO	1
47	314948	FOIL, LENS DYNA-PRO REFLECTOR	1
48	57796	SCREW, #6 X .50 PLASTITE	4
49	96149	BOLT, .375X .500 HSSH 5/16-18	2
50	1498	NUT, 5/16-18 REGHEXCTRLK	2
51	310748	LANYARD,HOOD 15.77LG H15	1
52	48800	SCREW, 1/4-20X1.00 WAHHC	1
53	120392	WASHER, FLAT .281X .63X .085	1
54	1502	NUT, 1/4-20 REGHEXCTRLK	2
55	305857	PLATE, SEAT F-5 SF & LF	1
56	312810	BRACKET, F-5 SEAT SUPPORT	2
57	20507	BOLT, .437X .156 HSSH 5/16-18	2
58	1498	NUT, 5/16-18 REGHEXCTRLK	2
59	120228	SCREW, 5/16-18X .63 HHC	4
60	1498	NUT, 5/16-18 REGHEXCTRLK	4
61	57153	SPRING,SEAT 2.62LG,1.48OD BLK	2
62	1341	CLAMP,SPRING	2
63	44811	SCREW, 1/4-20X .76 HWATAP	2
64	56907	COVER,SEAT SPRING	2
65	312406	FENDER,F-5 SUS LF FOR SHIFT	1
66	995346	SCREW, 1/4-20X .60 WAHHTAP	4
67	122017	SCREW, 5/16-18X1.00 HHC	2
68	448363	WASHER, FLAT .375X .65X .082	4
69	1498	NUT, 5/16-18 REGHEXCTRLK	2
70	55021	TRIM,STRIP BLACK	75'
71	311209	COVER,PLASTIC	1
72	313213	BRACKET,COVER	1
73	311331	SCREW, 1/4-15X.44(.53)HLO/HWA	1
74	1341	CLAMP,SPRING	2
75	311331	SCREW, 1/4-15X.44(.53)HLO/HWA	2
76	306388	BELT GUARD 7" X 28.03"	1
77	305354	BELT GUARD 7" X 15.64"	1
78	57034	SCREW, 10-24 X .63 TRHMA	10
79	1501	WASHER, FLAT .203 X .56 X .040	10
80	27116	NUT, #10-24 HEXKEPS	10
81	318072	OPERATOR'S MANUAL (NOT ILLUSTRATED)	1
82	318098	PART'S MANUAL (NOT ILLUSTRATED)	1

◊ Indicates STANDARD HARDWARE ITEMS.

MOWER SUSP. ASSEMBLY



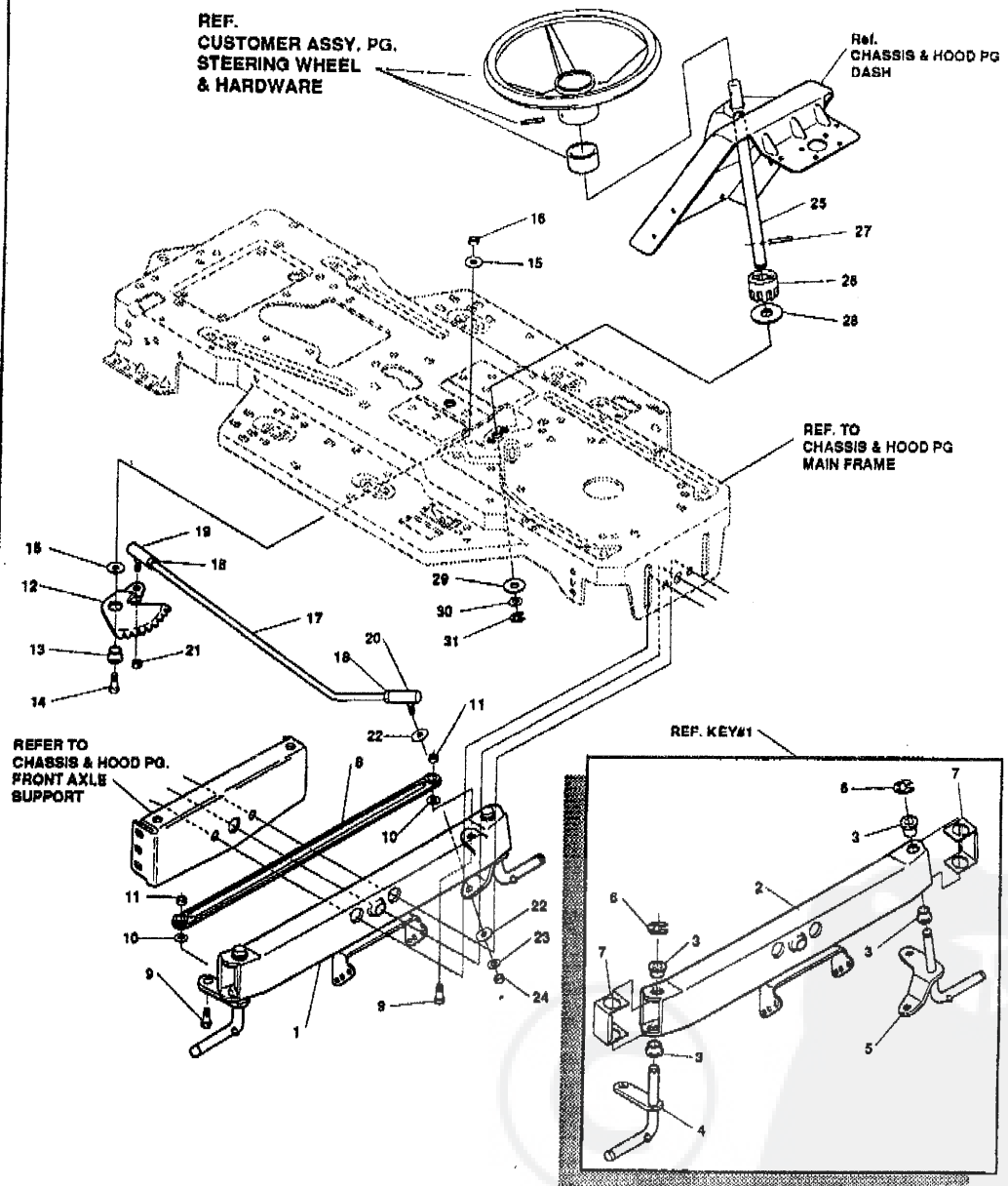
NOTE: ALWAYS USE ORIGINAL EQUIPMENT PARTS. Use of service/replacement parts other than original equipment parts may void your warranty.

ALL UNNUMBERED ITEMS ARE INTERCHANGABLE WITH OPPOSITE SIDE

315029A

key#	part#	description	qty.
1	9402	BRACKET,CLUT-ENGAGELEVER	1
2	180079	SCREW, 5/16-18X1.00 HHC	2
3	120393	WASHER, FLAT .344X.69X.085	2
4	1498	NUT, 5/16-18 REGHEXCTRLK	2
5	304791	ASSY,CLUTCH LEVER	1
6	50148	BEARING,FL. 503IDX.628OD	1
7	8260	PIN, HAIR .091 DIA X1.66LG	1
8	315347	BRACKET, SWITCH ENGAGE	1
9	35498	SCREW, 5/16-18X.75 WAHHTAP	1
10	1288	BRKT,CABLE RETAINER	1
11	39298	PULLEY, .906X.305 NYLON	1
12	58336	BOLT, .375X.375 HSSH 1/4-20	1
13	1502	NUT, 1/4-20 REGHEXCTRLK	1
14	9397	BRKT, FRAME CABLE	1
15	180020	SCREW, 1/4-20X.75 HHC	2
16	1502	NUT, 1/4-20 REGHEXCTRLK	2
17	301503	ASSY,CABLE, BLADE ENGAGE	1
18	120613	NUT, 1/4-28 HJAM	1
19	35498	SCREW, 5/16-18X.75 WAHHTAP	1
20	57444	TIE, CABLE BLACK NYLON	1
21	9569	ASSY,REAR LIFT	1
22	9188	ASSY,LINK,RIGHT SIDE	1
23	180079	SCREW, 5/16-18X1.00 HHC	1
24	58247	ADJUSTING NUT	1
25	1498	NUT, 5/16-18 REGHEXCTRLK	1
26	120396	WASHER, FLAT .631X1.06X.095	2
27	8260	PIN, HAIR .091 DIA X1.66LG	2
28	9117	BRKT,REAR,HANG,SUSP.	2
29	128211	BOLT, 5/16-18X.63 CARR	4
30	1498	NUT, 5/16-18 REGHEXCTRLK	4
31	58333	BRACKET,HGT/ADJUST SUPPORT	1
32	180077	SCREW, 5/16-18X.75 HHC	3
33	1498	NUT, 5/16-18 REGHEXCTRLK	3
34	304768	BRACE, FENDER F-5 SUS	1
35	180079	SCREW, 5/16-18X1.00 HHC	1
36	45602	WASHER, FLAT .333X.87X.119	1
37	1498	NUT, 5/16-18 REGHEXCTRLK	1
38	180079	SCREW, 5/16-18X1.00 HHC	1
39	1498	NUT, 5/16-18 REGHEXCTRLK	1
40	301238	QUADRANT,HEIGHT ADJUST	1
41	180077	SCREW, 5/16-18X.75 HHC	2
42	1498	NUT, 5/16-18 REGHEXCTRLK	2
43	9788	HANDLE,LIFT SHORT BLK	1
44	300171	BOLT, .500X.270 HSSH 5/16-18	1
45	996418	WASHER, FLAT .506X.75X.024	1
46	44108	NUT, 5/16-18 HWDFLCTRLK	1
47	301239	PAWL, HEIGHT ADJUST	1
48	300171	BOLT, .500X.270 HSSH 5/16-18	1
49	44108	NUT, 5/16-18 HWDFLCTRLK	1
50	9435	POINTER Z-PL	1
51	138479	WASHER, EXLK.105X.41X.03	1
52	35287	SCREW, #8-32X.38 HHWAT	1
53	303027	ROD,ACTUATOR-SHORT	1
54	58326	SPRING, HEIGHT ADJUST	1
55	58325	KNOB, HGT ADJ PUSH BUTTON	1
56	58329	GRIP, .750 OD W/ HOLE	1
57	9149	BRKT, CABLE RETAIN	1
58	39298	PULLEY, .906X.305 NYLON	1
59	58336	BOLT, .375X.375 HSSH 1/4-20	1
60	1502	NUT, 1/4-20 REGHEXCTRLK	1
61	314177	CABLE,LIFT 21.70 F-5 20X8-8	1
62	300310	PIN,CLEVIS .310DIA+.475LG	1
63	300311	RING, RET E. 31X.24	1
64	120375	NUT, 1/4-20 REGHEX	1
65	9239	CLEVIS	1
66	439455	SCREW, 5/16-18X.56PHPNMA BKPH	1
67	301551	WASHER, 344IDX1.50DX.09 CU BPH	1
68	120373	NUT, 5/16-18 SQ	1
69	39298	PULLEY, .906X.305 NYLON	1
70	300317	PIN, CLEVIS .38 DIA X1.00 LG	1
71	8260	PIN, HAIR .091 DIA X1.66LG	1
72	9405	CLEVIS, LIFT CABLE	1
73	120372	NUT, 1/4-20 REGSQ	1
74	38522	PIN CLEVIS .312 X .812	1
75	121222	PIN, COTTER .090/.088X.75LG	1
76	300335	LIFT COVER, 59" F5	1
77	300340	SCREW, #10 X .75 HHPLAST	3

STEERING ASSEMBLY



REFER TO CHASSIS & HOOD PG. FRONT AXLE SUPPORT

REF. TO CHASSIS & HOOD PG MAIN FRAME

REF. KEY#1

ALL UNNUMBERED ITEMS ARE INTERCHANGABLE WITH OPPOSITE SIDE

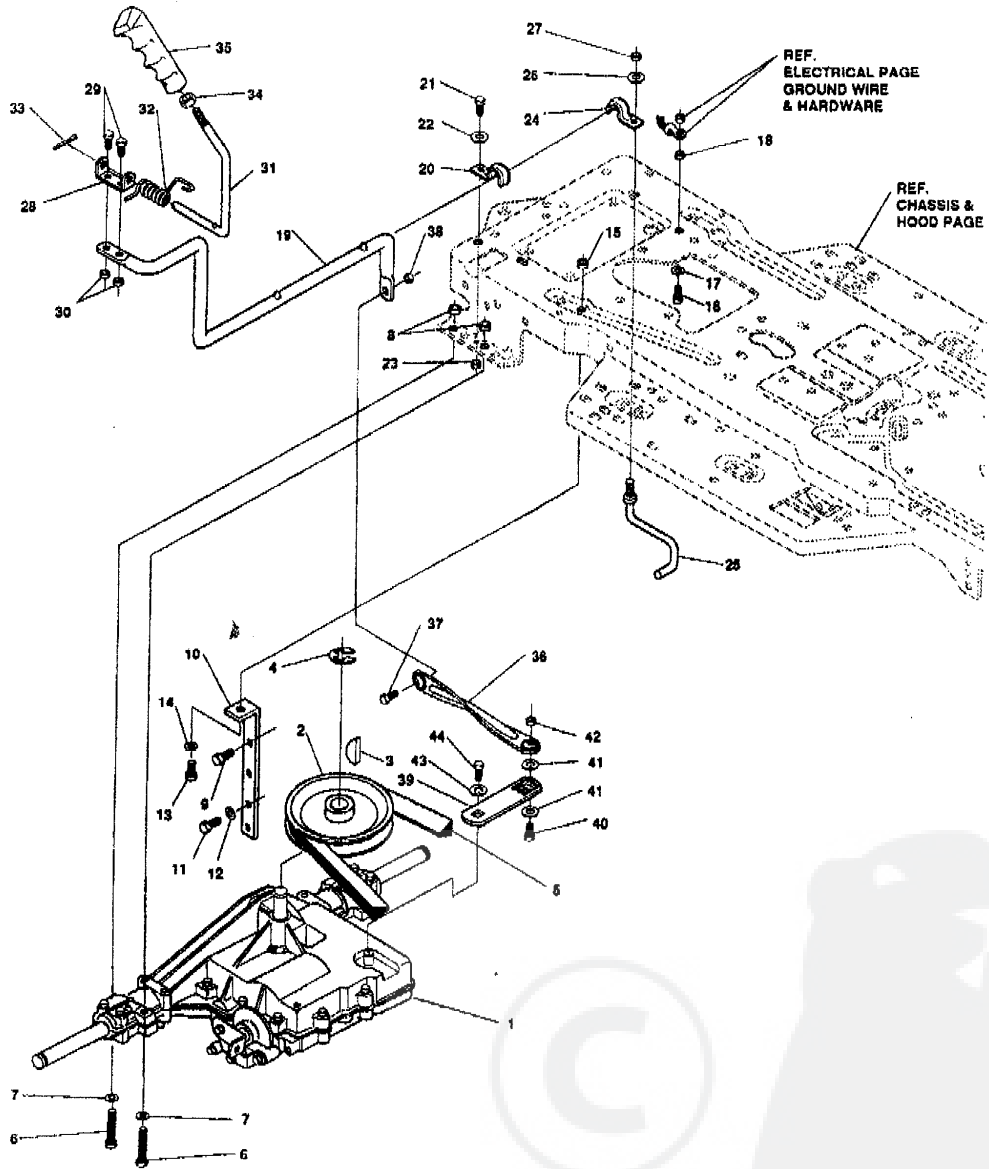
NOTE: ALWAYS USE ORIGINAL EQUIPMENT PARTS. Use of service/replacement parts other than original equipment parts may void your warranty.

317129A

key#	part#	description	qty.
1	*	AXLE, FRONT ASSY SUS LF	1
2	300272	ASSY FRONT AXLE SUSPENDED	1
3	52407	SPINDLE BEARING	4
4	9180	ASSY, SPINDLE, RH	1
5	314088	ASSY, SPINDLE, LH	1
6	36625	RING, RETEX .57X.05TRU5133-75	2
7	53373	AXLE COVER	2
8	304590	TIE ROD ASSY 19.81LG	1
9	◊180128	SCREW, 3/8-16X1.75 HHC	2
10	120382	WASHER, REGSPTLK .393X.68X.10	2
11	01499	NUT, 3/8-16 REGHXCTRLK	2
12	58289	SECTOR, STEERING LF	1
13	52406	BRNG, FL ECC.510IDX .998ODX .56	1
14	180177	SCREW, 1/2-13X1.50 HHC	1
15	22265	WASHER, FLAT .515X1.38X.119PL	2
16	01500	NUT, 1/2-13 REGHCTRLK	1
17	58291	STEERING LINK	1
18	◊124925	NUT, 3/8-24 REGHEXJAM	2
19	57158	BALL JOINT 3/8 TH'D SHORT STUD	1
20	21275	BALL JOINT 3/8 TH'D LONG STUD	1
21	046692	NUT, 3/8-24 WDFLHLK WHIZ	1
22	◊120396	WASHER, FLAT .531X1.06X.095	2
23	◊120382	WASHER, REGSPTLK .393X.68X.10	1
24	◊120369	NUT, 3/8-24 REGHEX	1
25	58243	SHAFT, STEERING LF	1
26	58244	PINION, STEERING LF	1
27	58274	PIN,DOWEL .2500 OD+1.75LG	1
28	301410	BRNG, FL .752IDX1.061ODX .24	1
29	301398	WASHER, FORMED1.135X1.53X.12	1
30	◊ 21682	WASHER, FLAT .765X1.25X.042	1
31	36625	RING, RETEX .57X.05TRU5133-75	1

* Order Individual Parts
 ◊ Indicates STANDARD HARDWARE ITEMS.

MOTION DRIVE ASSEMBLY



NOTE: ALWAYS USE ORIGINAL EQUIPMENT PARTS.
Use of service/replacement parts other than original equipment parts may void your warranty.

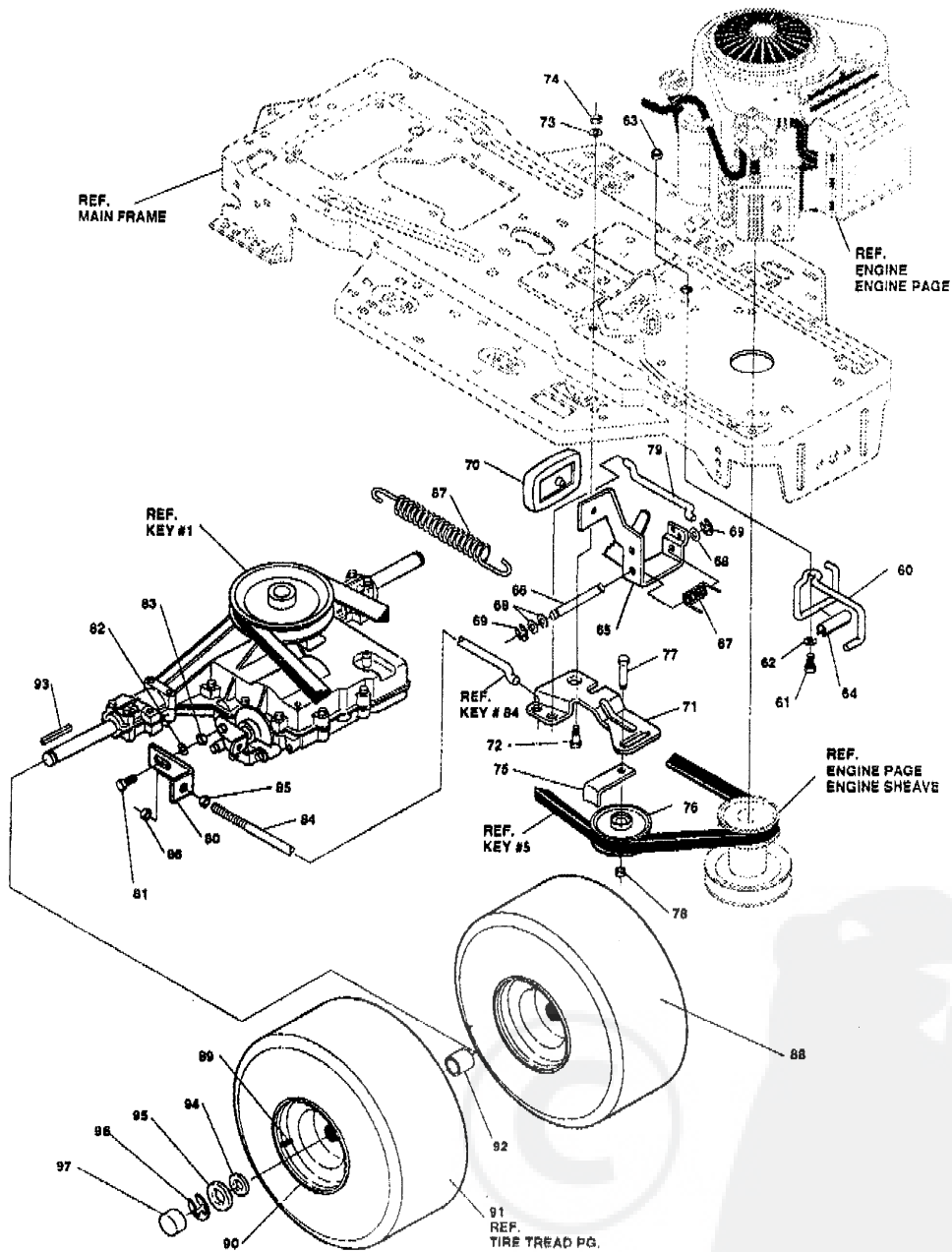
**ALL UNNUMBERED
ITEMS ARE INTERCHANGABLE
WITH OPPOSITE SIDE**

317048A

key#	part#	description	qty.
1		TRANSAXLE FOOTÉ 4360-6SPHD CONTACT NEAREST DEALER	1
2	302745	PULLEY, V 4L 6.60 OD	1
3	3021	KEY, WDRF 808 .750X.187X.312	1
4	22053	RING, RETEX .58X.04TRU5100-62	1
5	314120	BELT, V 4L 87.25 4WS LF	1
6	180112	SCREW, 5/16-18X2.75 HHC	4
7	0120393	WASHER, FLAT .344X.69X.065	4
8	01498	NUT, 5/16-18 REGHEXCTRLK	4
9	12632	BRACKET, STABILIZER	1
10	050947	SCREW, 3/8-16X1.25 WAHHTAP	1
11	035498	SCREW, 5/16-18X.75 WAHHTAP	3
12	120638	WASHER, HVSP TLK .328X.60X.09	1
13	0122017	SCREW, 5/16-18X1.00 HHC	1
14	0120393	WASHER, FLAT .344X.69X.065	1
15	01498	NUT, 5/16-18 REGHEXCTRLK	1
16	0120228	SCREW, 5/16-18X.63 HHC	1
17	138538	WASHER, REGINTLK.320X.61X.03	1
18	01498	NUT, 5/16-18 REGHEXCTRLK	1
19	310029	LEVER, SHIFT, LWR 4360 LF	1
20	310348	CLIP-SHIFT LEVER, .62 ROD	1
21	0180077	SCREW, 5/16-18X.75 HHC	1
22	996416	WASHER, FLAT .391X1.00X.125	1
23	01498	NUT, 5/16-18 REGHEXCTRLK	1
24	310348	CLIP-SHIFT LEVER, .62 ROD	1
25	57259	GUIDE, BELT 5/16-18THD	1
26	996416	WASHER, FLAT .391X1.00X.125	1
27	01498	NUT, 5/16-18 REGHEXCTRLK	1
28	310356	BRACKET, PIVOT SHIFT LEVER	1
29	0180018	SCREW, 1/4-20X.62 HHC	2
30	01502	NUT, 1/4-20 REGHEXCTRLK	2
31	309635	LEVER, SHIFT UPPER SF 1/2-13TH	1
32	310265	SPRING, TORS. .56X.95X.095	1
33	137185	PIN, COTTER .125 DIAX1.00LG	1
34	0120238	NUT, 1/2-13 HEXJAM	1
35	306690	HANDLE 1/2-13	1
36	314971	LINK TIE ROD SHIFTER 7.746G/L	1
37	0180124	SCREW, 3/8-16X1.25 HHC	1
38	01499	NUT, 3/8-16 REGHXCTRLK	1
39	309637	BRACKET, SHIFT 5SP SF FEN HT	1
40	0180124	SCREW, 3/8-16X1.25 HHC	1
41	120394	WASHER, FLAT .406X.81X.065	2
42	01499	NUT, 3/8-16 REGHXCTRLK	1
43	57157	WASHER, .750X.250 SP-TRANSAXLE	1
44	056255	SCREW, 1/4-28X.75 NYLHHC	1

◊ Indicates STANDARD HARDWARE ITEMS.

MOTION DRIVE ASSEMBLY



NOTE: ALWAYS USE ORIGINAL EQUIPMENT PARTS.
Use of service/replacement parts other than original equipment parts may void your warranty.

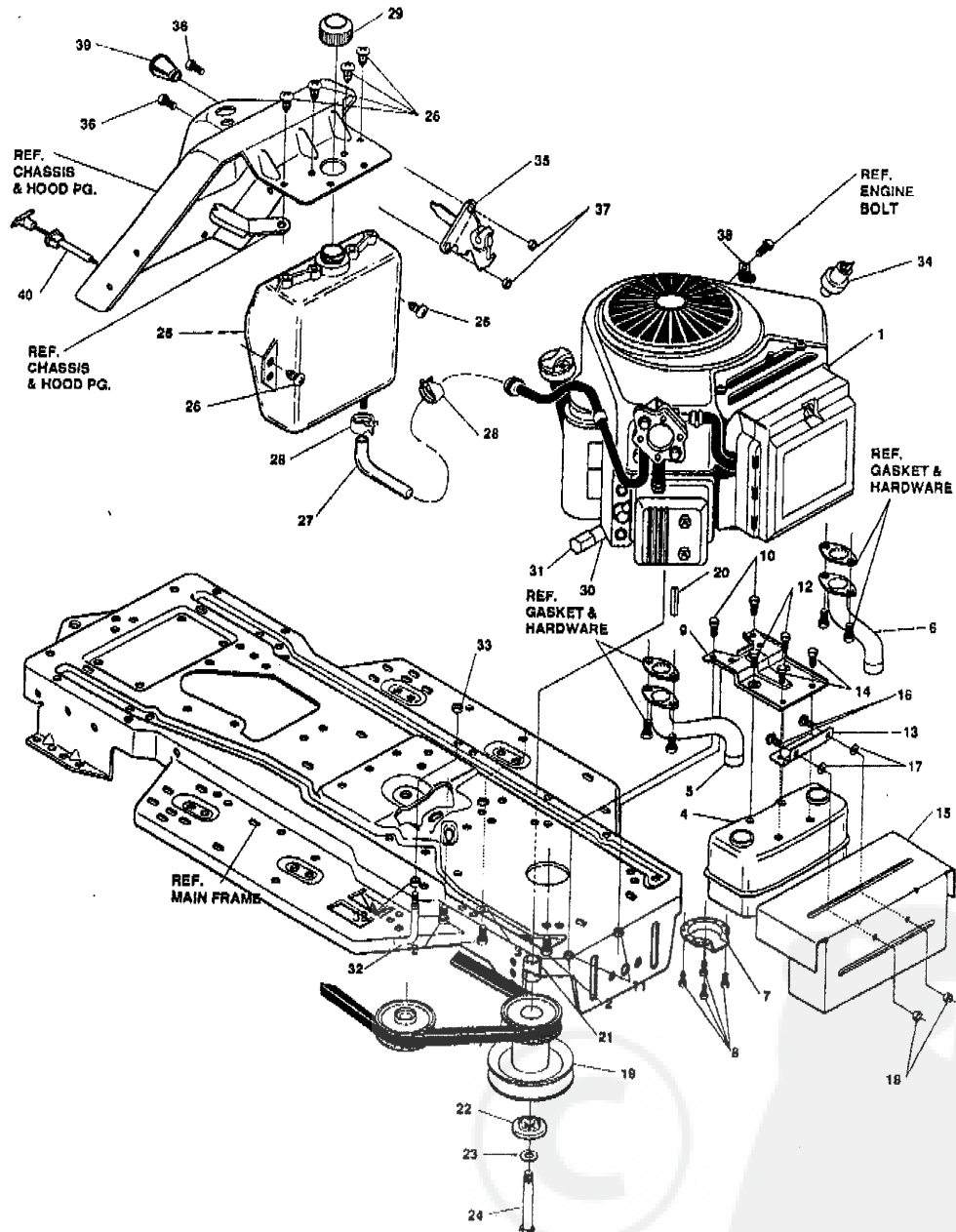
**ALL UNNUMBERED
ITEMS ARE INTERCHANGABLE
WITH OPPOSITE SIDE**

317948A

key#	part#	description	qty.
60	58366	GUIDE-BELT/DRAGLINK	1
61	0180079	SCREW, 5/16-18X1.00 HMC	1
62	45602	WASHER, FLAT .333X .87X.119	1
63	01498	NUT, 5/16-18 REGHEXCTRLK	1
64	309278	PLASTIC EXTRUSION-BELT GUIDE	1
65	300308	PEDAL ASSY,BRAKE/CLUTCH LF	1
66	57196	ROD,PIVOT .50 OD,4.44LG	1
67	57847	SPRING, BRAKE PEDAL	1
68	2968	WASHER, FLAT .504X .75X.059	3
69	20864	RING, RET E .39X.04TRU5133-50	2
70	48160	PAD, CLUTCH BRAKE W/PRINTING	1
71	300154	ARM,IDLER TRACTION DR. LF	1
72	300793	BOLT, .625X .135 HHSH 5/16-18	1
73	45602	WASHER, FLAT .333X .87X.119	1
74	01498	NUT, 5/16-18 REGHEXCTRLK	1
75	39659	RETAINER,BELT	1
76	35374	PULLEY, IDLER V4L 3.06X .62	1
77	45892	BOLT, 3/8-16X1.50 CARR	1
78	01498	NUT, 3/8-16 REGHXCTRLK	1
79	57204	ROD, CLUTCH	1
80	57217	BRACKET, BRAKE ROD	1
81	20507	BOLT, .437X .158 HHSH 5/16-18	1
82	45602	WASHER, FLAT .333X .87X.119	1
83	01498	NUT, 5/16-18 REGHEXCTRLK	1
84	313659	ROD, BRAKE P920 4WS LF 23.50	1
85	0271184	NUT, 5/16-18 HEXKEPS	1
86	01498	NUT, 5/16-18 REGHEXCTRLK	1
87	56359	SPRING, CLUTCH .113X.750X8.75	1
88	*	TIRE&RIM,PU 20X10-8TURF	2
89	24167	VALVE STEM	1
90	301366	RIM, WHEEL 20X8.00	1
91		REFER TO TIRE TREAD PAGE	
92	57479	SPACER, .75 X 1.25 X 1.32	2
93	301565	SPACER,SLVE .75IDX1.25OD X.5TK	2
94	39628	KEY, SQUARE .1875OX2.50LG	2
95	0642	WASHER, FLAT .755X1.31X.075	4
96	042815	WASHER, FLAT .755X1.53X.07	2
97	36625	RING, RETEX .57X.05TRU5133-75	2
98	40394	CAP, 1.500ID X 7/8LG HUB	2

0 Indicates STANDARD HARDWARE ITEMS.
 * Order Individual Parts

ENGINE & CONTROL ASSEMBLY



NOTE: ALWAYS USE ORIGINAL EQUIPMENT PARTS. Use of service/replacement parts other than original equipment parts may void your warranty.

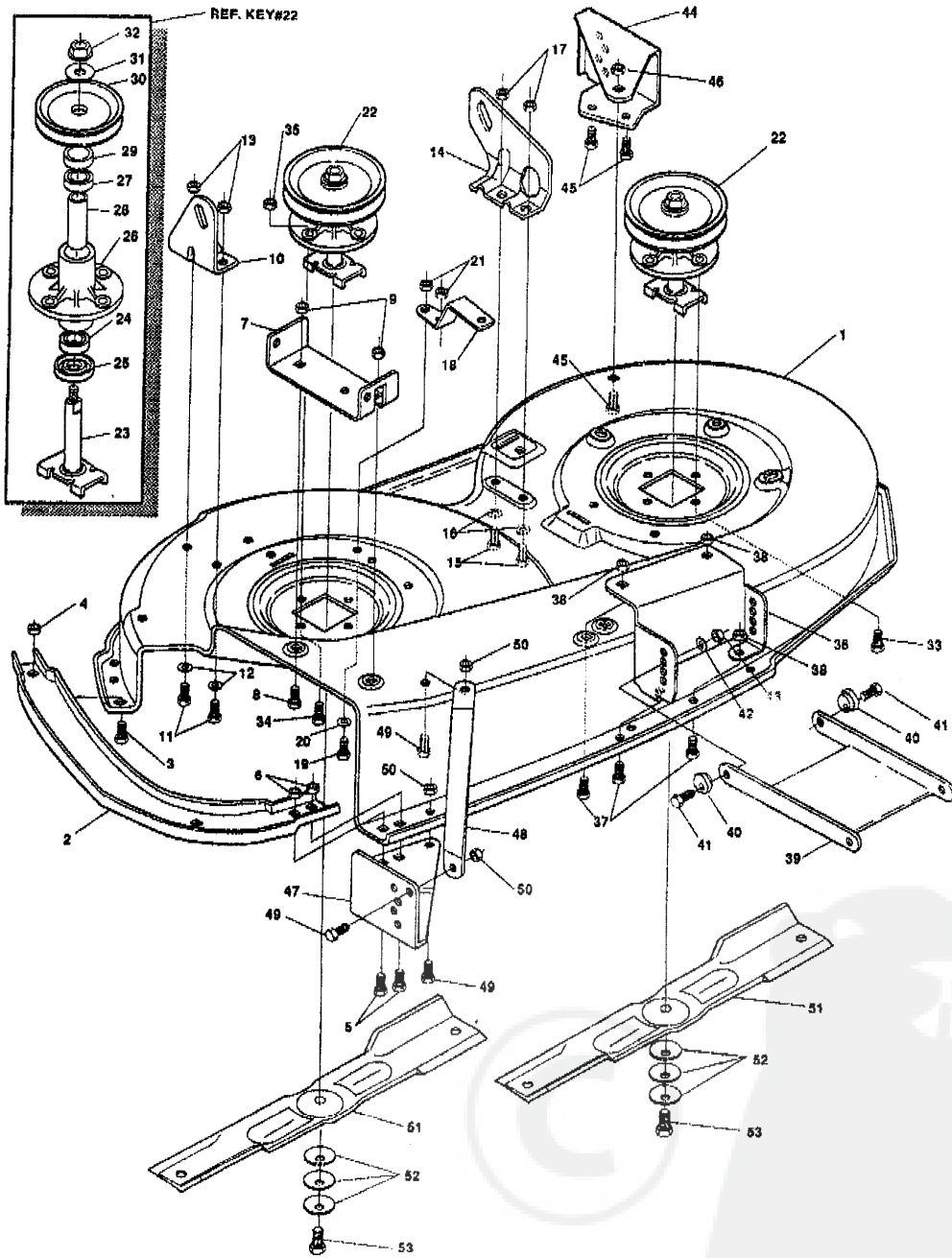
ALL UNNUMBERED ITEMS ARE INTERCHANGABLE WITH OPPOSITE SIDE

318074A

key#	part#	description	qty.
1	ENGINE	SEE ENGINE MANUAL	1
2	050947	SCREW, 3/8-16X1.25 WAHHTAP	4
3	138489	WASHER, EXLK .384X.69X.04	1
4	305553	MUFFLER 15HP B&S VANG	1
5	305554	EXHAUST TUBE 15HP RH	1
6	305555	EXHAUST TUBE 15HP LH	1
7	56472	DEFLECTOR SIDE OUT (BS222573)	1
8	035287	SCREW, #8-32X .38 HHWATAPGR2	4
9	306577	BRACKET, MUFFLER	1
10	056030	SCREW, 5/16-18X.75WDFLLK GR5	2
11	055273	NUT, 5/16-18 HXWDFLLK	2
12	0995346	SCREW, 1/4-20X .50 WAHHTAP	2
13	9796	BRKT, TRANSAXLE	1
14	0995338	SCREW, 1/4-20X .63 HHWATAP	2
15	308144	HEAT SHIELD, MUFFLER	1
16	126211	BOLT, 5/16-18X .63 CARR GR2	2
17	309436	PUSHNUT, 5/16 BOLT RETAINER	2
18	055273	NUT, 5/16-18 HXWDFLLK	2
19	316802	PULLEY, ENG 4.40OFF/5.00D/3.00D	1
20	57791	KEY, SQUARE .250SQX5.00LG	1
21	304246	SPACER, 1.01X1.484 ENGIN PULLEY	1
22	56431	WASHER, .980IDX1.36ODX.437PILOT	1
23	0120393	WASHER, REGSPTLK 459X.78X.12	1
24	0428644	SCREW, 7/16-20X5.00 HHC	1
25	314992	TANK, FUEL 2GAL CLEAR	1
26	049050	SCREW, 1/4-10X .75PHPNTAPGR2	6
27	47452	GAS LINE .25ID	10*
28	48872	CLAMP, FUEL LINE	2
29	46704	GAS CAP	1
30	307174	NIPPLE 3/8-18 NPT X 4"	1
31	47828	CAP, PIPE 3/8-18 NPT	1
32	301713	ROD, UPSTOP	1
33	045171	NUT, 3/8-16 HWDFL WHIZ-LOCK ZN	2
34	314797	OIL SENSOR	1
35	310280	CONTROL, THROTTLE 33.5LG BS VAN	1
36	0159943	SCREW, 10-24X .63PHPNMA GR2BK	2
37	0271166	NUT, #10-24 HEXKEPS	2
38	57569	RETAINER, .31IDX.62X.03 WIRE	1
39	50607	KNOB, ROUND THROTTLE	1
40	310279	CONTROL, CHOKE 35.25LG PANTK 05	1

◊ Indicates STANDARD HARDWARE ITEMS.

PRE-PAINTED DECK ASSEMBLY



NOTE: ALWAYS USE ORIGINAL EQUIPMENT PARTS.
Use of service/replacement parts other than original equipment parts may void your warranty.

**ALL UNNUMBERED
ITEMS ARE INTERCHANGABLE
WITH OPPOSITE SIDE**

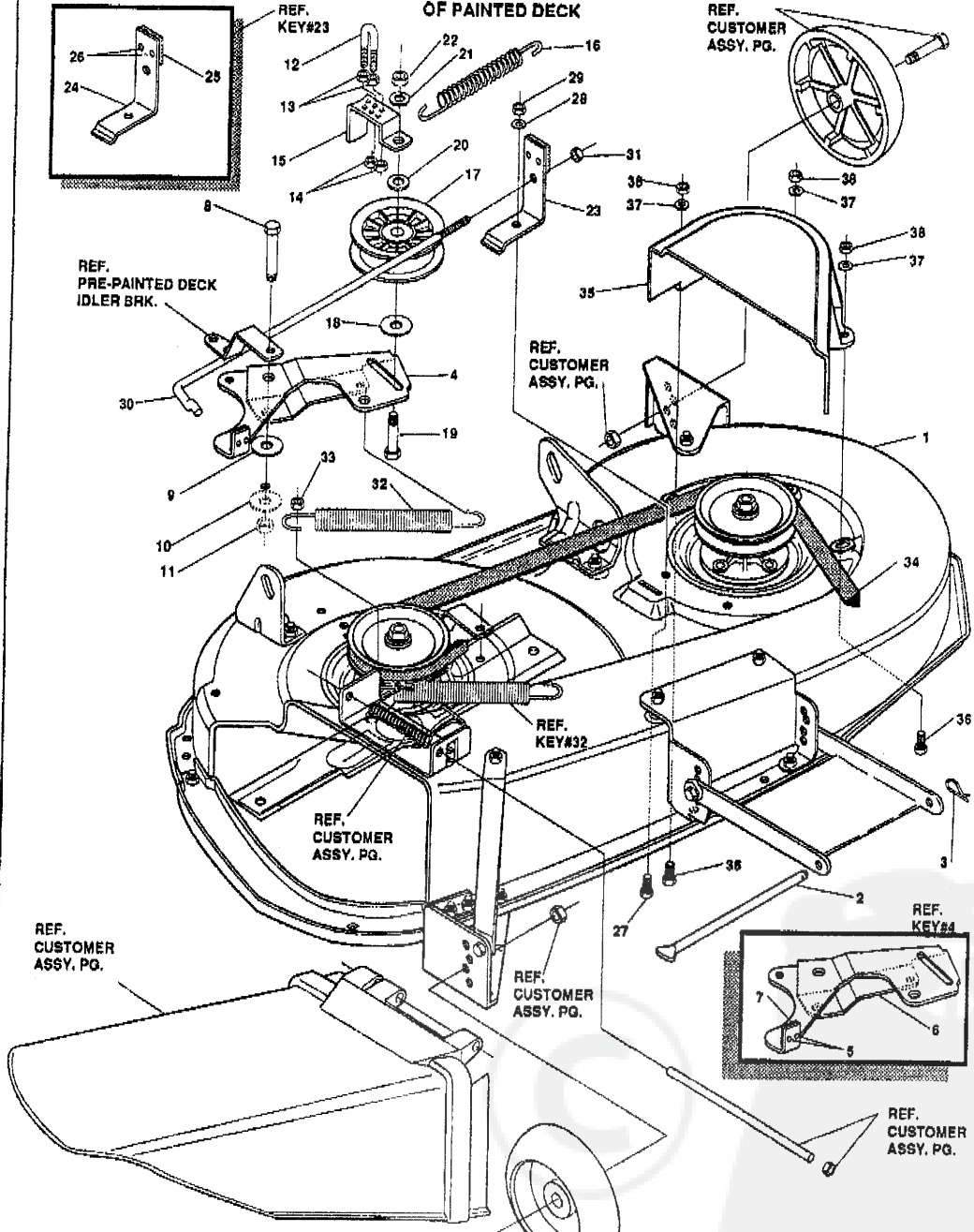
318656D

key#	part#	description	qty.
1	317038	MOWER DECKS, RIDER 43"	1
2	304102	TOE GUARD	1
3	0180075	SCREW, 5/16-18X .63 HHC	1
4	01498	NUT, 5/16-18 REGHEXCTRLK	1
5	0122007	SCREW, 5/16-18X .75 HHC	2
6	01498	NUT, 5/16-18 REGHEXCTRLK	2
7	302364	BRACKET CHUTE MOUNT	1
8	0180075	SCREW, 5/16-18X .63 HHC	2
9	01498	NUT, 5/16-18 REGHEXCTRLK	2
10	58250	LIFT BRACKET, REAR, RH	1
11	0180077	SCREW, 5/16-18X .75 HHC	2
12	0120393	WASHER, FLAT .344X .69X.065	2
13	01498	NUT, 5/16-18 REGHEXCTRLK	2
14	58251	BRACKET, DECK LIFT REAR LH	1
15	0180077	SCREW, 5/16-18X .75 HHC	2
16	0120393	WASHER, FLAT .344X .69X.065	2
17	01498	NUT, 5/16-18 REGHEXCTRLK	2
18	302363	BRACE IDLER	1
19	0180077	SCREW, 5/16-18X .75 HHC	2
20	0120393	WASHER, FLAT .344X .69X.065	2
21	044108	NUT, 5/16-18 HWDFLCTRLK	2
22	56424	QUILL ASSY, 38/39/40/43	2
23	56425	SHAFT/SADDLE 36"	1
24	49562	BRNG. BALL	1
25	50616	DUST SHIELD	1
26	55547	QUILL CASTING (1046)	1
27	49562	BRNG. BALL	1
28	50818	SPACER, 3.797LGX.669IDX.88OD	1
29	51449	SPACER, 4.38LGX.932ODX.672ID	1
30	56390	PULLEY, 28/36" QUILL	1
31	56385	SPECIAL WASHER	1
32	01282	NUT, 7/16-20 WDFLLK	1
33	050634	SCREW, 5/16-18X .88 WAHHTAP	7
34	0300345	SCREW, 5/16-18X1.38 WATAPGR	1
35	01498	NUT, 5/16-18 REGHEXCTRLK	1
36	313778	BRACKET FRNT.	1
37	0180075	SCREW, 5/16-18X .63 HHC	4
38	01498	NUT, 5/16-18 REGHEXCTRLK	4
39	58305	LINK BRACKET DECK FR	1
40	58247	ADJUSTING NUT	2
41	0122017	SCREW, 5/16-18X1.00 HHC	2
42	35214	WASHER, FLAT .328X1.06X.062	2
43	01498	NUT, 5/16-18 REGHEXCTRLK	2
44	304426	BRACKET, GAGE WHEEL L.H	1
45	0180075	SCREW, 5/16-18X .63 HHC	3
46	01498	NUT, 5/16-18 REGHEXCTRLK	3
47	313925	BRACKET, GAGE WHEEL R.H.	1
48	314282	BRACKET, STABILIZER	1
49	0180075	SCREW, 5/16-18X .63 HHC	3
50	01498	NUT, 5/16-18 REGHEXCTRLK	3
51	313954	BLADE, 21.70 HIGH-LIFT	2
52	2483	WASHER, .39IDX1.25DX.07 BELLVIL	6
53	039573	SCREW, 3/8-24X1.00 NYLHHC	2

◇ STANDARD HARDWARE ITEMS

PAINTED DECK ASSEMBLY

SEE DWG. 315656 FOR PARTS ASSY. OF PAINTED DECK



NOTE: ALWAYS USE ORIGINAL EQUIPMENT PARTS.
 Use of service/replacement parts other than original equipment parts may void your warranty.

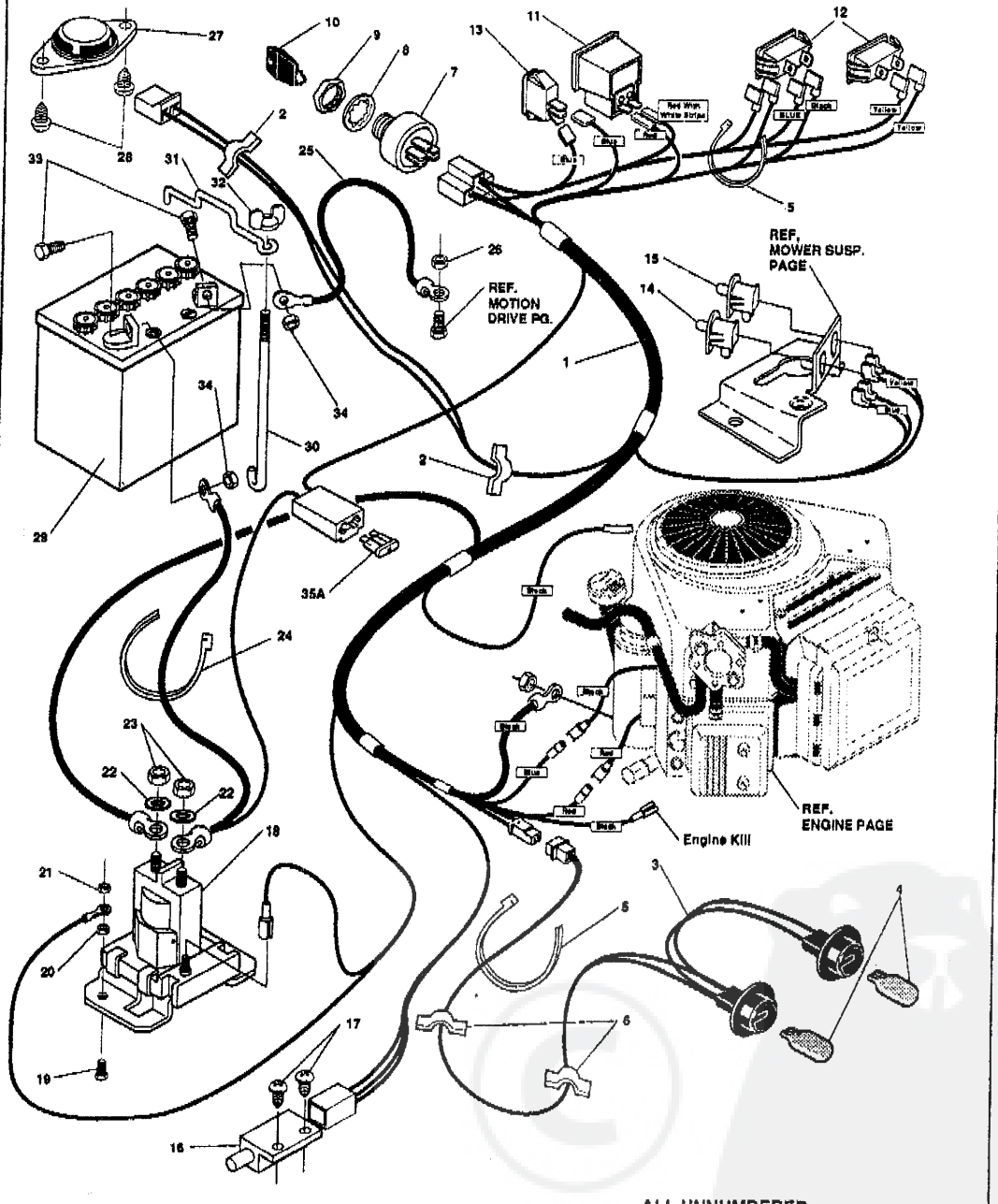
ALL UNNUMBERED ITEMS ARE INTERCHANGABLE WITH OPPOSITE SIDE

315594C

key#	part#	description	qty.
1	316835	DECK,49" MOWER 2-WH DOM	1
2	58306	ROD, DECK HITCH 2-PL	1
3	8260	PIN, HAIR .091 DIA X 1.66LG	1
4	304414	ASSY.IDLER ARM	1
5	41601	RIVET, OVSET .167DIA X .50LG	2
6	305298	ARM IDLER	1
7	306973	BRAKE PAD - HARD - 232AF	1
8	304420	BOLT, .500X2.15 HXHDCPSH	1
9	996307	WASHER, FLAT .391X1.00X.209	1
10	996416	WASHER, FLAT .391X1.00X.125	1
11	45171	NUT, 3/8-16 HWDFL WHIZ NUT	1
12	317303	U-BOLT	1
13	271166	NUT, #10-24	2
14	997316	NUT, #10-24 REGHXCTRLK	2
15	315873	GUIDE, BELT, IDLER ZINC	1
16	314107	SPRING, TENSION 5.00LG	1
17	310326	PULLEY, IDLER BFF 4.00 WIDE FL	1
18	25210	WASHER, FLAT .392X1.25X.09	1
19	57325	BOLT, 3/8-16X2.00 CARR	1
20	996307	WASHER, FLAT .391X1.00X.125	1
21	120382	WASHER, REGSPTLK.393X.68X.10	1
22	120377	NUT, 3/8-16 REGHX	1
23	304118	BLADE BRAKE ASSY.	1
24	308241	BRAKE ARM	1
25	306973	BRAKE PAD	1
26	135624	RIVET	2
27	120228	◇ SCREW, 5/16-18X .63 HHC	1
28	120393	WASHER, FLAT .344X .69X.065	1
29	1498	NUT, 5/16-18 REGHEXCTRLK	1
30	314079	ROD, BRAKE	1
31	1502	◇ NUT, 1/4-20 REGHEXCTRLK	1
32	35410	SPRING .071 X .62 X 4.37	1
33	1498	NUT, 5/16-18 REGHEXCTRLK	1
34	314108	BELT, V 5L 86.00 KEVLAR	1
35	314108	GUARD, BELT LH PLASTIC	1
36	120228	◇ SCREW, 5/16-18X .63 HHC	3
37	120393	WASHER, FLAT .344X .69X.065	3
38	1498	◇ NUT, 5/16-18 REGHEXCTRLK	3

◇ Indicates STANDARD HARDWARE ITEMS

ELECTRICAL ASSEMBLY



NOTE: ALWAYS USE ORIGINAL EQUIPMENT PARTS.
Use of service/replacement parts other than original equipment parts may void your warranty.

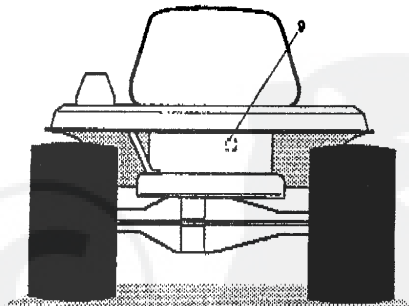
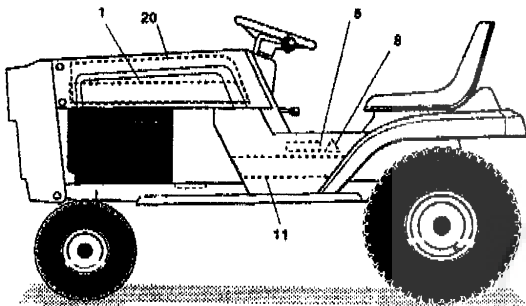
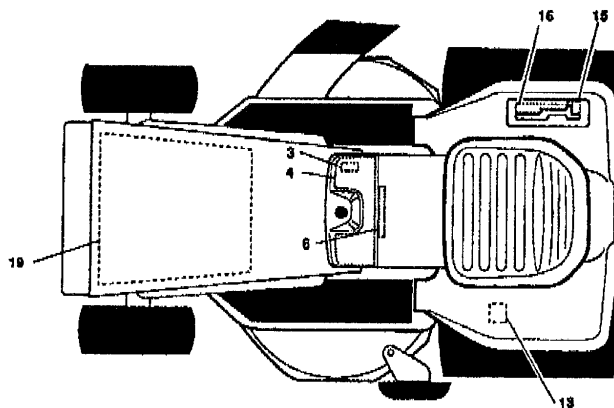
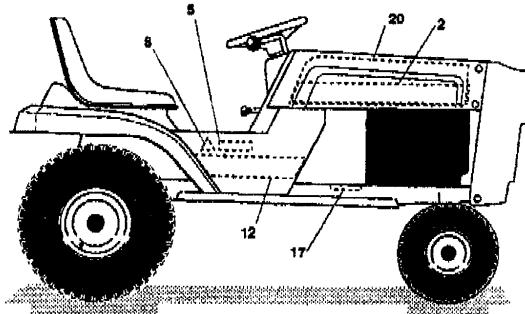
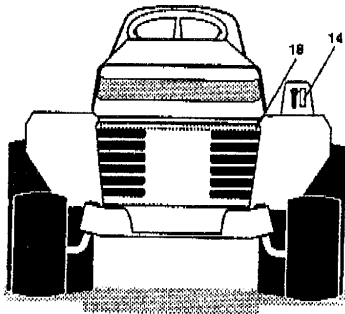
**ALL UNNUMBERED
ITEMS ARE INTERCHANGABLE
WITH OPPOSITE SIDE**

317941A

key#	part#	description	qty.
1	312398	WIRE,HARNESS 14-16BSVAN WRAPPED	1
2	41482	PRESS CLIP,1.380LG .255ID	2
3	303064	ASSY,LIGHT WIRE-1/4 TURN	1
4	52572	BULB, HEADLAMP	2
5	57444	TIE, CABLE BLACK NYLON 5.62L	2
6	41482	PRESS CLIP,1.380LG .255ID	2
7	305720	SWITCH-IGN.(AFTER FIRE) 3 POSN	1
8	0138557	WASHER, REGINTLK.640X1.1X.05	1
9	048140	NUT, 5/8-32 HXHD IGN SWIT	1
10	300626	KEY, IGNITION SWITCH	1
11	300133	AMMETER	1
12	300255	LIGHT,INDICATOR PANEL MNT	1
13	300334	LIGHT SWITCH ON/OFF PANEL MNT	2
14	300220	SWITCH,SNAPMNT NO.055/.116BLK	1
15	58277	SWITCH,SNAPMNT NO.055/.166	1
16	57211	SWITCH,SCR MNT SP NO	1
17	057220	SCREW, #12 X .50 PHPNHTAP	2
18	63716	SOLENOID	1
19	0187745	SCREW, 1/4-20X .75 HXSEMMA	2
20	01602	NUT, 1/4-20 REGHEXCTRLK	2
21	0271172	NUT, 1/4-20 REGHEXKEPS	1
22	138485	WASHER, EXLK.320X.61X.03	2
23	0120368	NUT, 5/16-24 REGHEX	2
24	57444	TIE, CABLE BLACK NYLON 5.62L	1
25	55511	WIRE, GROUND, 12.5"	1
26	0271184	NUT, 5/16-18 HEXKEPS	1
27	57547	SWITCH, SEAT	1
28	0190505	SCREW, 1/4-20X .38PHPNHMAGR2	2
29	302257	BATTERY 12V 7 PLATE	1
30	57511	LIFT CABLE 20.75LG	1
31	57552	ROD, BATTERY, TOP	1
32	310067	NUT, WING 1/4-20 SMALL PLASTIC	1
33	0120854	SCREW, 1/4-20X .63 HHC	2
34	0271172	NUT, 1/4-20 REGHEXKEPS	2
35A	** 302031	FUSE, 15 AMP SPADE TYPE	1
35B	** 49211	FUSE, 15 AMP CYLINDRICAL TYPE	1

**Cylindrical or Spade type fuses are included with the wire harness.
 0 indicates STANDARD HARDWARE ITEMS.

DECALS



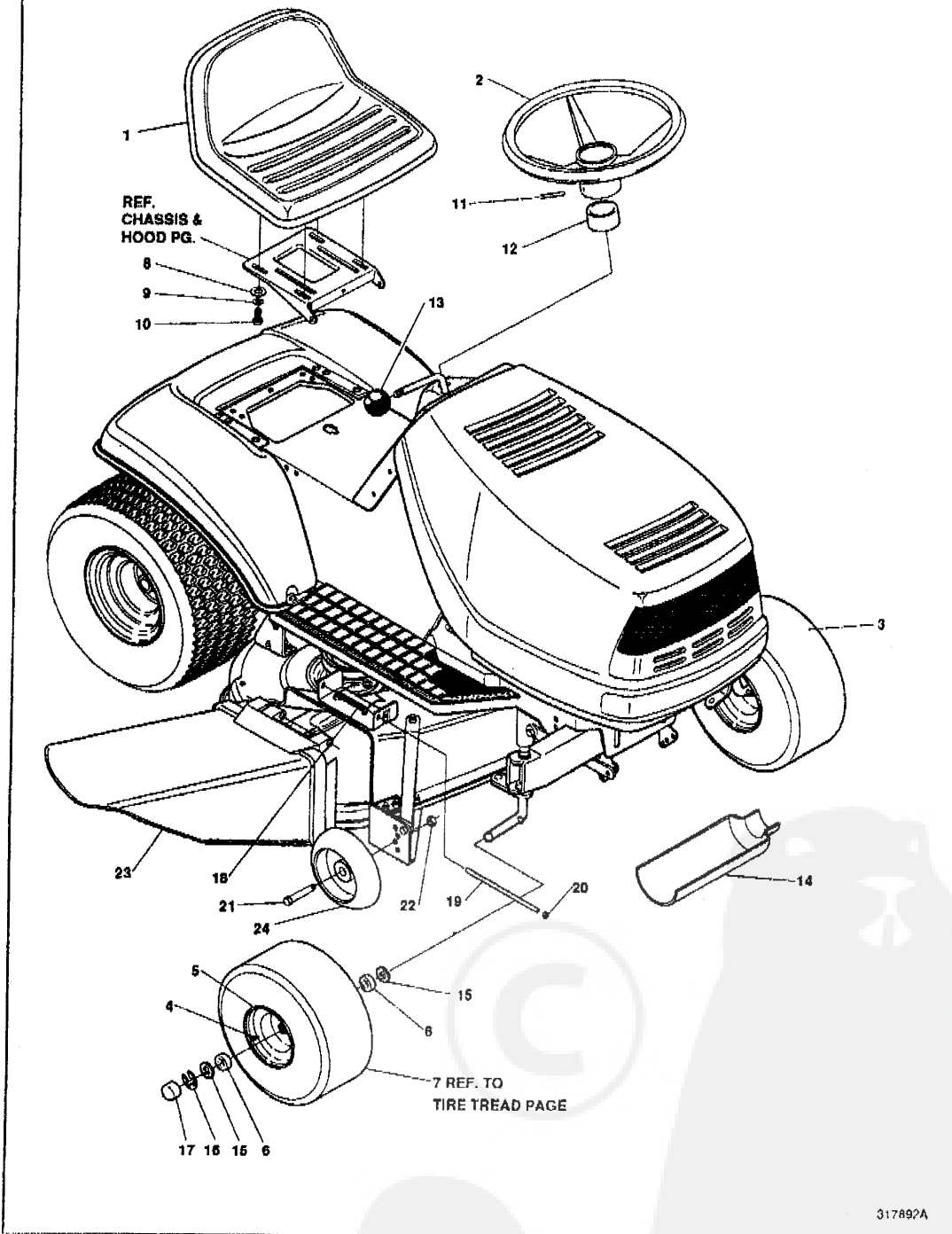
NOTE: ALWAYS USE ORIGINAL EQUIPMENT PARTS.
Use of service/replacement parts other than original equipment parts may void your warranty.

**ALL UNNUMBERED
ITEMS ARE INTERCHANGABLE
WITH OPPOSITE SIDE**

317033A

key#	part#	description	qty.
1	317645	DECAL HOOD H6 POWERTRAC LH	1
2	317646	DECAL HOOD H6 POWERTRAC RH	1
3	68900	DECAL BLADE ENGAGE EUROPE	1
4	317344	DECAL DASH AMM.IL CHOKE PL	1
5	68902	DECAL WARNING FRENCH/GERMAN	2
6	69524	DECAL INSTRUCT CONSOLE TOP GER	1
7		REFERENCE ONLY	1
8	305770	DECAL CAUTION TRIANGLE EUROPE	2
9	318010	DECAL TUV GS	1
10		REFERENCE ONLY	1
11	317647	DECAL TRACTOR CONSOLE LH	1
12	317648	DECAL TRACTOR CONSOLE RH	1
13	68901	DECAL BLADE HEIGHT ADJ. EUROPE	1
14	301897	DECAL LIFT DECK BLADE HEIGHT	1
15	311394	DECAL SHIFT REV/NEUTRAL	1
16	311395	DECAL SHIFTER POSITION F4380-6	1
17	68903	DECAL BRAKE/CLUTCH EUROPE	1
18	317851	DECAL GRILLE POWERTRAC	1
19	55835	PAD, FOAM HOOD TOP H-6/7	1
20	55836	PAD, FOAM HOOD SIDE H-6/7	2

CUSTOMER ASSEMBLY



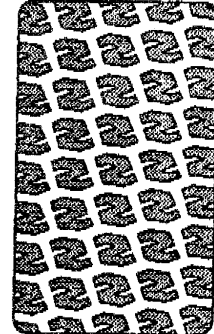
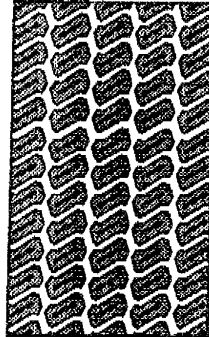
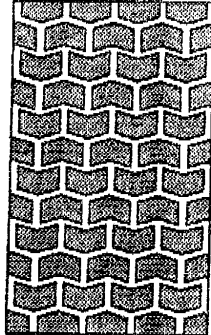
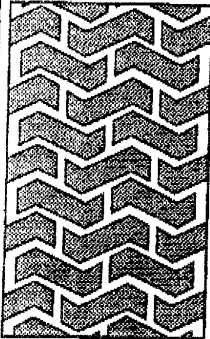
CUSTOMER ASSEMBLY VIEW

317892 PARTS BAG ASSY QTY1

key#	part#	description	qty
1	57455	SEAT 550	1
2	301251	STEERING WHEEL 13" STD	1
3	*	TIRE & RIM ASSY, 15X6-6 WHITE	2
4	24167	VALVE STEM	1
5	39829	WHEEL W/BEARINGS	1
6	39879	BEARINGS	2
7		REFER TO TIRE TREAD PAGE	
8	120393	WASHER, FLAT .344X.69X.065	4
9	120638	WASHER, HVSP TLK .328X.60X.09	4
10	122007	SCREW, 5/16-18X.75 HHC	4
11	456378	PIN, SPRING .250DIA X2.00LG	1
12	57212	COVER, STEERING	1
13	55514	KNOB, SHIFT	1
14	54873	OIL TROUGH	1
15	642	WASHER, FLAT .755X1.31X.075	4
16	36625	RING, RETEX	2
17	40394	HUB CAP	2
18	314975	TORSION SPRING	1
19	304424	ROD, PIVOT	1
20	3535	NUT, PUSH	1
21	23783	BOLT, .500X1.390 HSSH 3/8-16	2
22	1499	NUT, 3/8-16 REGHXCTRLK	2
23	304422	CHUTE DEFLECTOR	1
24	302811	DECK WHEEL	2

* Order Individual Parts

TREAD PATTERNS



TIRE SIZE	"A"	"B"	"C"	"D"
11 X 4.00 - 5	42295			
13 X 5.00 - 6	41060			
15 X 6.00 - 6	301140	316702	39830	313952
16 X 6.50 - 8		41081		314539
18 X 6.50 - 8				
18 X 9.50 - 8		316701		313950
20 X 8.00 - 8	314584			
20 X 10.00 - 8	58276			313565
20 X 10.00 - 10		55893		
23 X 9.50 - 12	314370			
23 X 9.50 - 12		53655		

316711 A