

REPAIR PARTS MANUAL

38" - 12 H.P. LAWN TRACTOR

MODEL C3554-020

ONE YEAR LIMITED WARRANTY

For one (1) year from date of purchase by the first consumer for residential use (thirty (30) days commercial use), NOMA Outdoor Products Incorporated warrants that it will replace free of charge, including labor, any original part of any NOMA Outdoor Products Incorporated product found to be defective by any authorized Service Dealer or the factory, except the battery which is warranted for ninety (90) days from date of purchase.

This warranty does not cover engine, transmission, transaxle or differential (these items are covered by their manufacturer's own warranty). This warranty does not cover parts that have failed due to normal wear or parts that have failed subject to misuse or abuse. Transportation of the unit or part to and from an authorized Service Dealer or factory is the responsibility of the owner.

A step by step explanation as to what procedure should be followed for this warranty is:

1. If a part becomes defective, contact the store where the unit was purchased for the name and address of the authorized Service Dealer nearest to you.
2. If you cannot locate an authorized Service Dealer, write Service Department of NOMA Outdoor Products Incorporated for the name and address of the authorized Service Dealer in your area or call the Service Department at 1-901-422-1690.
3. Return the defective product, along with proof of purchase to such authorized Service Dealer for replacement of any defective part where covered by this warranty.

There is no other express warranty. Implied warranties, including those of merchantability and fitness for a particular purpose are limited to one (1) year from date of purchase. Liability for incidental or consequential damages are excluded.

Some states do not allow limitations on how long an implied warranty lasts, so the above limitation may not apply to you. Some states do not allow the exclusion of incidental or consequential damages, so the above exclusion may not apply to you. This warranty gives you specific legal rights, and you may have other rights which vary from state to state.

NOMA Outdoor Products Incorporated

Caller 8000

Jackson, TN 38308-8000

UNIT PARTS AND SERVICE

Fill in and mail the registration card packed with the unit. For service other than covered in this manual, contact an authorized service dealer. A nationwide parts and service organization has been established to provide locally available parts and service. When ordering repair parts, always give the following information: 1. The Part Name; 2. The Part Number; 3. The Quantity desired; 4. The Full (eight digit) Model Number of the unit. The model number will be found on a plate attached to the unit.



Look for this symbol. It means - ATTENTION! BECOME ALERT! A HAZARD TO OPERATOR, BYSTANDER, PROPERTY OR EQUIPMENT MAY EXIST.

NOMA Outdoor Products Incorporated

Caller 8000

Jackson, TN 38308-8000

Part No. 322755A

4791



OPERATIONAL PRECAUTIONS



THESE INSTRUCTIONS ARE FOR YOUR PROTECTION. PLEASE READ THEM CAREFULLY.

1. Know the controls and how to stop quickly. **READ THIS OPERATOR'S MANUAL** and instructions furnished with attachments.
2. Wear safety glasses or eye shields when assembling or operating riding mower.
3. Do not allow children to operate the machine. Do not allow adults to operate it without proper instruction.
4. Do not carry passengers. Do not mow when children and others are around. Disengage power to blade(s) or attachment(s) and stop the engine while others are in the vicinity of the mower.
5. Battery fluid (electrolyte) is an **ACID** and is extremely dangerous. Do not smoke while servicing the battery. Do not service the battery near a open flame or spark.
6. Handle gasoline with care, it is highly flammable.
 - A. Use approved gasoline container.
 - B. Never remove the fuel cap of, or add gasoline to, a running or hot engine, or an engine that has not been allowed to cool for several minutes after running. Never fill the tank indoors and always clean up spilled fuel immediately.
 - C. Do not smoke while filling fuel tank.
 - D. Do not run the engine indoors. Open doors if engine must be run in garage. Exhaust fumes contain **CARBON MONOXIDE**, an **ODORLESS** and **DEADLY GAS**.
7. Check fuel supply before each use allowing space for expansion as the heat of the engine and/ or sun can cause gasoline to expand.
8. Do not operate mower when barefooted. Always wear substantial footwear, preferably steel-toed shoes. Do not wear loose fitting clothing that could get caught in moving parts.
9. Clear the work area of objects (wire, rocks, etc.) which might be picked up and thrown. Check all controls for proper function.
10. Disengage all attachment clutches, shift to neutral, and set parking brake before attempting to start the engine (motor). When starting engine equipped with a pull starter, stand firm and make sure your feet are well away from the blade(s).
11. Disengage power to blade(s) or other attachments(s) and stop the engine (motor) before leaving the operator's position. Always dismount from the left side.
12. Disengage power to blade(s) or other attachment(s) and stop the engine (motor) before making any repairs or adjustments.
13. Disengage power to blade(s) or other attachment(s) when transporting or not in use.
14. Take all possible precautions when leaving the vehicle unattended, such as disengaging power to blade(s) or attachment(s), lower the attachment(s), setting the parking brake, stopping the engine (motor), and removing the key.
15. Do not stop or start suddenly when going uphill or downhill. Mow up and down the face of steep slopes; never across the face.
16. Reduce speed and exercise extreme caution on slopes and in sharp turns to prevent tipping or loss of control. Be especially cautious when changing direction on slopes.
17. Stay alert for holes, rocks, and roots in the terrain and other hidden hazards. Keep away from drop-off. Never operate your riding mower on wet or slippery grass or at a speed which could cause a skid. Exercise care when mowing around a fixed object to prevent the blade(s) from striking it. Never deliberately run over any foreign object.
18. Always disengage blade control lever before attempting to remove the mower from a hole or other obstruction.
19. Use care when pulling loads or using heavy equipment.
 - A. Use only approved drawbar hitch points.
 - B. Limit loads to those that you can safely control.
 - C. Do not turn sharply. Use care when backing.
 - D. Use counterweight(s), wheel weights or tire chains when suggested in attachment(s) instructions.
20. Watch for traffic when crossing or near roadways.
21. When using attachment(s), never direct discharge of material toward bystanders nor allow anyone near the vehicle while in operation.
22. Keep the vehicle and attachments in good operating condition, and keep safety devices in place and in working condition.
23. Keep all nuts, bolts, and screws tight to be sure the equipment is in safe working condition.
24. Never store the equipment with gasoline in the tank inside a building where fumes may reach an open flame or spark. Allow the engine to cool before storing in any enclosure.
25. To reduce fire hazard, keep the engine free of grass, leaves or excessive grease.
26. The vehicle and attachments should be stopped and inspected for damage after striking a foreign object, and the damage should be repaired before restarting and operating the equipment.
27. Do not change the engine governor settings or over-speed engine.
28. When using the vehicle with mower, proceed as follows:
 - A. Mow only in daylight or in good artificial light.
 - B. Never make a cutting height adjustment while the engine (motor) is running if the operator must dismount to do so.
 - C. Shut the engine (motor) off when removing the grass catcher or unclogging chute.
 - D. Check the blade mounting bolts for proper tightness at frequent intervals.
29. Under normal usage, the grass catcher bag material is subject to deterioration and wear. Check the bag frequently for deterioration and wear and replace worn bags. Check that replacement bags comply with the original manufacturer's recommendations or specifications.
30. Disengage power to mower before backing up. Do not mow in reverse unless absolutely necessary and then only after careful observation of the entire area behind the mower.

OWNER'S INFORMATION

Record the following information about your unit so that you will be able to provide it in case of loss or theft.

MODEL NUMBER: - (Enter complete 8 digit number from model plate on unit)

PURCHASE DATE: ____ / ____ / ____ CODE NO.: _____ SERIAL NO.: _____

DEALER'S NAME AND ADDRESS: _____

CITY: _____ STATE: _____ TELEPHONE: _____

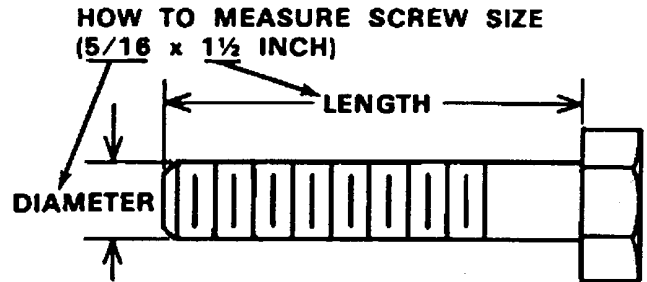
CONTENTS OF SHIPPING CARTON

- 1 - Lawn Tractor with 38 inch Mower Deck
- 1 - Operator's Manual
- 1 - Repair Parts Manual
- 1 - Engine Manual
- 1 - Steering Wheel (see Note)
- 1 - Seat (see Note)
- 1 - Bag of Assembly Parts Containing (see Note):
 - 1 - Oil Drain Trough
 - 4 - 5/16 x 3/4 inch Hex Head Screws
 - 4 - 5/16 inch Split Lockwashers
 - 4 - 11/32 inch Flatwashers
 - 1 - Roll Pin
 - 1 - Steering Sleeve

NOTE: Refer to page 22 (Customer Assembly Parts) for more detailed description.

TOOLS REQUIRED FOR ASSEMBLY

- 2 - 7/16 inch Wrenches (or adjustable wrench)
- 1 - 1/2 inch Wrench (or adjustable wrench)
- 1 - Small Phillips Screwdriver with a 1/4 inch shank
- 1 - Hammer



DANGER



This lawn tractor can be dangerous if carelessly used.

Read your Operator's Manual thoroughly before operating your lawn tractor.

Always wear safety glasses or eye shields while assembling or operating your lawn tractor.

DO NOT carry passengers at any time.

Keep your hands, feet, hair and loose clothing away from the discharge area, the underside of the mower deck or any moving parts while the engine is running.

DO NOT allow children or young teenagers to operate or be near your lawn tractor while it is operating.

ALWAYS GIVE THE FOLLOWING INFORMATION WHEN ORDERING REPAIR PARTS:

1. The PART NUMBER; 2. The PART NAME; 3. QUANTITY DESIRED; 4. The MODEL NUMBER (As shown on Model Plate).
SEND PART ORDERS AS PER INSTRUCTIONS ON THE FRONT PAGE.

DO NOT USE KEY NUMBERS WHEN ORDERING REPAIR PARTS, ALWAYS USE PART NUMBERS.

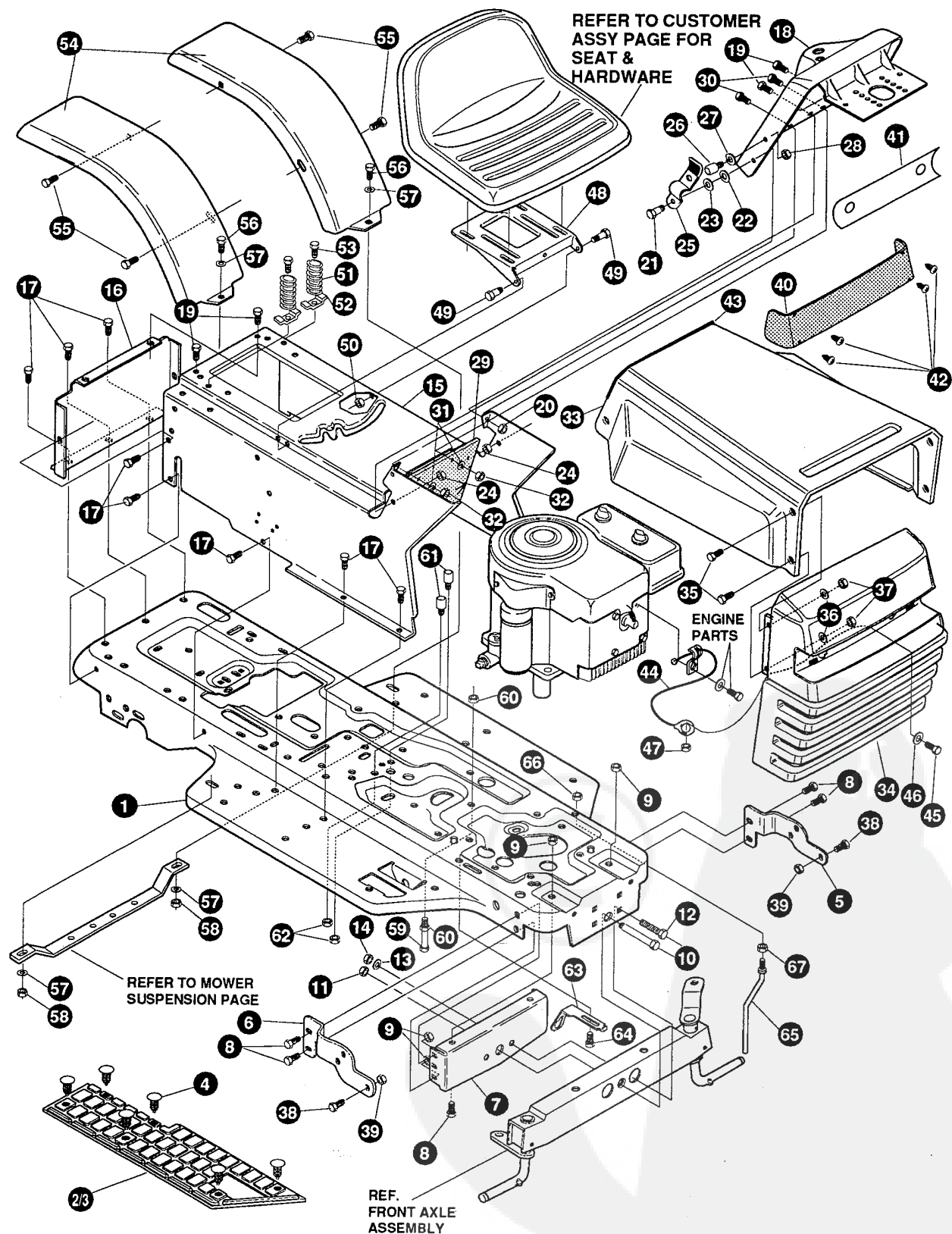
All replacement parts will be supplied in current production colors or in a neutral color.

A handling fee is applicable to small parts orders.

YOUR UNIT IS RIGHT HAND (RH) OR LEFT HAND(LH) AS YOU STAND BEHIND IT.

38" LAWN TRACTOR MODEL C3554-020

CHASSIS & HOOD ASSEMBLY



NOTE: ALWAYS USE ORIGINAL EQUIPMENT PARTS. Use of service/replacement parts other than original equipment parts may void your warranty.

ALL UNNUMBERED ITEMS ARE INTERCHANGABLE WITH OPPOSITE SIDE

322318A

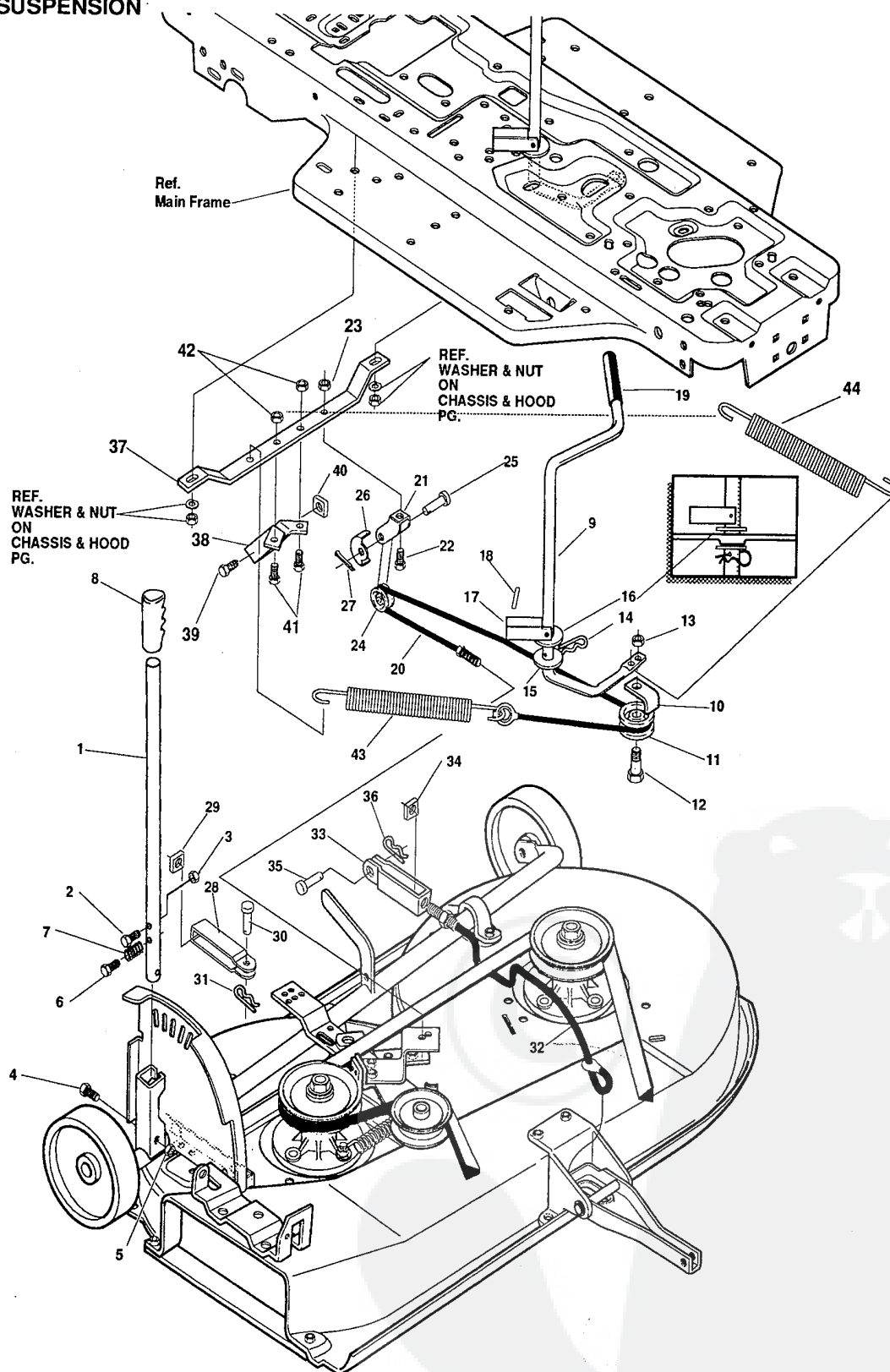
38" LAWN TRACTOR MODEL C3554-020

key#	part#	description	qty.
1	314883-860	FRAME,MAIN SF RIDER	1
2	310003	FOOTPAD,LH	1
3	310004	FOOTPAD,RH	1
4	309235	FASTENER, RATCHET	12
5	316199	BRACKET,GRILLE L.H.	1
6	316200	BRACKET,GRILLE R.H.	1
7	313437	BRKT,SUPT FRT AXLE-	1
8	• 56030	SCREW, 5/16-18X.75WDFLLK	6
9	• 55273	NUT, 5/16-18 HXWDFLLK	6
10	29616	BOLT, .625X2.875 SPSH 1/2-20	1
11	• 274654	NUT, 1/2-20 REGHXCTRLK	1
12	• 122201	SCREW, 3/8-16X2.75 HHC	2
13	2483	WASHER,.39IDX1.25DX.07 BELLVIL	2
14	• 1499	NUT, 3/8-16 REGHXCTRLK	2
15	319329-860	CONSOLE	1
16	56235-860	CONSOLE, REAR COVER	1
17	• 995346	SCREW, 1/4-20X .50 WAHTAP	15
18	320466-860	DASH	1
19	• 995338	SCREW, 1/4-20X .63 HHWATAP	2
20	50352	NUT 1/4-20 WDFLLK TOP LOCK	2
21	8482	BOLT, .375X .156 HSH 5/16-18	2
22	• 120394	WASHER, FLAT .406X .81X.065	2
23	• 120393	WASHER, FLAT .344X .69X.065	2
24	• 1498	NUT, 5/16-18 REGHEXCTRLK	2
25	57159	LATCH, .94WDX.047 ASSY HOOD	2
26	53446	PIN, 5/16-18 HOOD LATCH	2
27	• 138538	WASHER, REGINTLK.320X.61X.03	2
28	• 45174	NUT, 5/16-18 HEXWDFLLK WHIZ	2
29	312306	BAFFLE CONSOLE SOUND EXPORT	1
30	• 300314	SCREW, 1/4-20X .88WAHTAP	2
31	• 120393	WASHER, FLAT .344X .69X.065	2
32	• 1502	NUT, 1/4-20 REGHEXCTRLK	2
33	314538-860	HOOD	1
34	314476	GRILLE	1
35	• 274672	SCREW, 1/4-20X .63 WAHHC	4
36	• 120392	WASHER, FLAT .281X .63X.065	4
37	• 1502	NUT, 1/4-20 REGHEXCTRLK	4
38	36149	BOLT, .375X .500 HSH 5/16-18	2
39	• 1498	NUT, 5/16-18 REGHEXCTRLK	2
40	302333	LENS HEADLAMP	1
41	314948	FOIL,LENS REFLECTOR	1
42	• 57796	SCREW, #6 X .50 PLASTITE	4
43	47453	EDGING,WIDE BLK	25"
44	310749	LANYARD,HOOD	1
45	121887	SCREW 1/4-20 X .75 HHC	1
46	120392	FLATWASHER .281 X .63 X .065	1
47	1502	LOCKNUT 1/4-20	1
48	58367-853	PLATE, SEAT	1
49	20507	BOLT, .437X .156 HSH 5/16-18	2
50	• 1498	NUT, 5/16-18 REGHEXCTRLK	2
51	56220	SPRING,1.43X2.38X.162 COM SEAT	2
52	1341	CLAMP,SPRING 1.17"ID	2
53	• 995346	SCREW, 1/4-20X .50 WAHTAP	2
54	43970-860	FENDER	2
55	• 995346	SCREW, 1/4-20X .50 WAHTAP	4
56	• 122017	SCREW, 5/16-18X1.00 HHC	2
57	• 446363	WASHER, FLAT .375X .88X.082	4
58	• 1498	NUT, 5/16-18 REGHEXCTRLK	2
59	• 427342	SCREW, 3/8-16X 6.50 HHC	1
60	• 1499	NUT, 3/8-16 REGHEXCTRLK	2
61	• 53446	PIN 5/16-18	2
62	• 271184	NUT, 5/16-18 HEX KEPS	2
63	312953	BRACKET,SWITCH MOUNT	1
64	• 995346	SCREW, 1/4-20X .50 WAHTAP	1
65	50653	GUIDE, BELT	1
66	• 41529	NUT, 3/8-16 HXCTRLKJAM	1
67	• 271190	NUT, 3/8-16 HEXKEPS	1
68	322837	ENGLISH OPERATOR MANUAL (NOT ILLUSTRATED)	1
69	322838	FRENCH OPERATOR MANUAL (NOT ILLUSTRATED)	1
70	322839	GERMAN OPERATOR MANUAL (NOT ILLUSTRATED)	1
71	322755	PARTS MANUAL (NOT ILLUSTRATED)	1

• Indicates STANDARD HARDWARE ITEMS.

38" LAWN TRACTOR MODEL C3554-020

MOWER SUSPENSION



NOTE: ALWAYS USE ORIGINAL EQUIPMENT PARTS. Use of service/replacement parts other than original equipment parts may void your warranty.

ALL UNNUMBERED ITEMS ARE INTERCHANGABLE WITH OPPOSITE SIDE

314836G

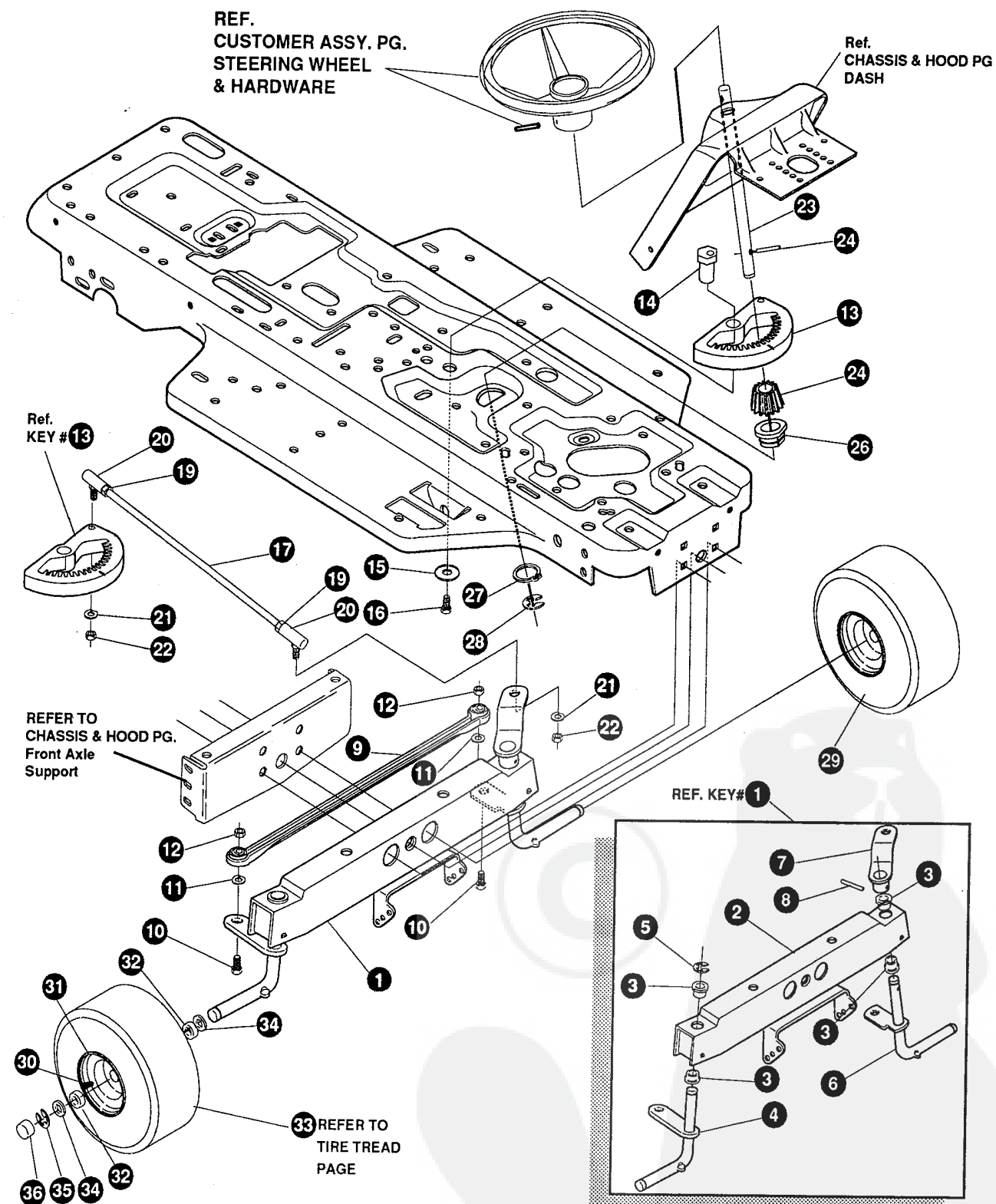
38" LAWN TRACTOR MODEL C3554-020

key#	part#	description	qty.
1	313637	LEVER, DECK HEIGHT ADJUST	1
2	57324	BOLT, 5/16-18X.56	1
3	◇271184	NUT, 5/16-18 HEXKEPS	1
4	◇122040	SCREW, 5/16-18X1.50 HHC	1
5	◇1498	NUT, 5/16-18 REGHEXCTRLK	1
6	◇995346	SCREW, 1/4-20X .50 HHWATAP	1
7	57319	SPRING, .70X.85X.091	1
8	56924	GRIP, .75 X 4.25 HANDLE	1
9	314877	LEVER, CLUTCH	1
10	1288	BRKT, CABLE RETAINER	1
11	39298	PULLEY, .906X.305 NYLON	1
12	58336	BOLT, .375X .375 HHSH 1/4-20	1
13	◇1502	NUT, 1/4-20 REGHEXCTRLK	1
14	8260	PIN, HAIR .091 DIAX1.66LG	1
15	◇996425	WASHER, FLAT .515X .88X.064	1
16	◇22265	WASHER, FLAT .515X1.38X.119	1
17	305225	STOP, PTO ENGAGEMENT	1
18	455481	PIN, SPRING.187DIAX1.00LG	1
19	46478	GRIP, HAND .50ID 3.37	1
20	314520	CABLE, CLUTCH 30.25"	1
21	49320	CABLE, PULLEY SUPPORT	1
22	◇120228	SCREW, 5/16-18X .63 HHC	1
23	◇1498	NUT, 5/16-18 REGHEXCTRLK	1
24	39298	PULLEY, .906X.305 NYLON	1
25	49332	PIN, CLEVIS .375DX.81LG	1
26	314523	GUARD, PULLEY	1
27	121222	PIN, COTTER .090/.086X.75LG	1
28	9405	CLEVIS, LIFT CABLE	1
29	◇120372	NUT, 1/4-20 REGSQ	1
30	39522	PIN, CLEVIS .312 X .812	1
31	56180	PIN, HAIR .091 DIAX1.62LG	1
32	301718	CABLE, LIFT 22.7 LG F-5 20X10-8	1
33	9405	CLEVIS, LIFT CABLE	1
34	◇120372	NUT, 1/4-20 REGSQ	1
35	39522	PIN, CLEVIS .312 X .812	1
36	56180	PIN, HAIR .091 DIAX1.62LG	1
37	314880-930	GUIDE, SUPPORT, DECK	1
38	314876-930	BRACKET, DECK GUIDE	1
39	◇122040	SCREW, 5/16-18X1.50 HHC	1
40	◇1498	NUT, 5/16-18 REGHEXCTRLK	1
41	◇122017	SCREW, 5/16-18X1.00 HHC	2
42	◇1498	NUT, 5/16-18 REGHEXCTRLK	2
43	300473	SPRING, TENSION	1
44	316648	SPRING .071 X .62 X 12.88	1

◇STANDARD HARDWARE ITEMS

38" LAWN TRACTOR MODEL C3554-020

STEERING ASSEMBLY



NOTE: ALWAYS USE ORIGINAL EQUIPMENT PARTS. Use of service/replacement parts other than original equipment parts may void your warranty.

319475C

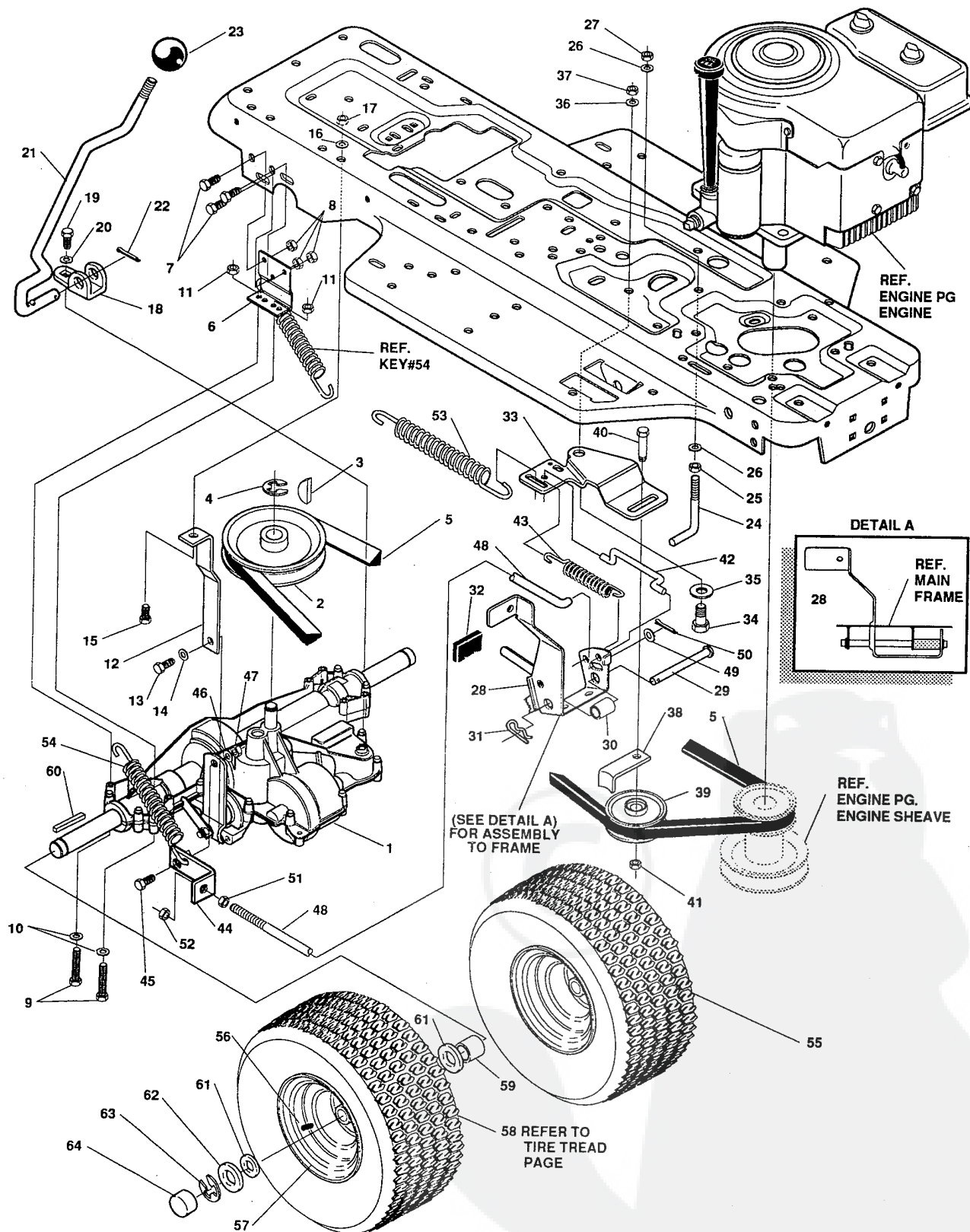
38" LAWN TRACTOR MODEL C3554-020

key#	part#	description	qty.
1.	*	FRONT AXLE ASSEMBLY SF	1
2.	318883	AXLE FRONT	1
3.	50546	BEARING FLANGE	4
4.	310368	SPINDLE,RH	1
5.	36625	RING,RETEX	1
6.	310367	SPINDLE,LH	1
7.	49447	ARM,STEERING LH	1
8.	454565	PIN,SPRING	1
9.	302691	TIE ROD	1
10.	• 122145	SCREW, 3/8-16X1.25 HHC	2
11.	120382	WASHER, .393X.68X.10 REGSPTLK	2
12.	• 1499	NUT, 3/8-16 REGHCTRLK	2
13.	304245	SECTOR GEAR	1
14.	44011	BOLT, .750X1.40 SPSH	1
15.	2483	WASHER, .39IDX1.25ODX.07	1
16.	39573	SCREW, 3/8-24X1.00 NYL	1
17.	56191	DRAG LINK ASSEMBLY	1
18.	56190	DRAG LINK	1
19.	• 124925	NUT, 3/8-24 REGHEXJAM	2
20.	21275	BALL JOINT	2
21.	• 120382	WASHER, EGSPTLK	2
22.	120369	NUT, 3/8-24 REGHEX	2
23.	314109-930	STEERING SHAFT	1
24.	44009	PINION,STEERING SHAFT	1
25.	454565	PIN,SPRING	1
26.	54902	BEARING,1.370X.50 FLANGE STEERING	1
27.	39492	RING,RETEX 1.27X.05	1
28.	36625	RING,RETEX .57X.05	1
29.	*	ASSEMBLY, TIRE & RIM	2
30.	24167	VALVE STEM	1
31.	39937	WHEEL W/BEARING	1
32.	39979	BEARING, 1.380DX.753ID FLANGE	2
33.		REFER TO TIRE TREAD PAGE	
34.	642	WASHER,FLAT .755X1.31X.075	4
35.	36625	RING,RETEX .57X.05	2
36.	40394	HUB CAP	2

• STANDARD HARDWARE ITEMS
 * ORDER INDIVIDUAL PARTS.

38" LAWN TRACTOR MODEL C3554-020

MOTION DRIVE ASSEMBLY



NOTE: ALWAYS USE ORIGINAL EQUIPMENT PARTS.
Use of service/replacement parts other than original equipment parts may void your warranty.

**ALL UNNUMBERED
ITEMS ARE INTERCHANGABLE
WITH OPPOSITE SIDE**

320345A

38" LAWN TRACTOR MODEL C3554-020

key#	part#	description	qty.
1	^	TRANSAXLE FOOTE 4360-5	1
2	302745	PULLEY,V 4L 6.60 OD	1
3	3021	KEY, WDRF 606 .750X.187X.312	1
4	22053	RING, RETEX .58X.04TRU5100-62	1
5	54758	BELT, V 4L 82.00 SF DRIVE	1
6	7707	BRACKET, TRANSAXLE BLK	2
7	◦ 120228	SCREW, 5/16-18X .63 HHC	6
8	◦ 1498	NUT, 5/16-18 REGHEXCTRLK	6
9	◦ 180112	SCREW, 5/16-18X2.75 HHC	4
10	◦ 120393	WASHER, FLAT .344X .69X.065	4
11	◦ 1498	NUT, 5/16-18 REGHEXCTRLK	4
12	309770-930	BRKT,STABILIZER	1
13	◦ 35498	SCREW, 5/16-18X .75 WAHTAP	1
14	◦ 120638	WASHER, HVSPTLK .328X.60X.09	1
15	◦ 122017	SCREW, 5/16-18X1.00 HHC	1
16	◦ 138485	WASHER, EXLK .320X.61X.03	1
17	◦ 1498	NUT, 5/16-18 REGHEXCTRLK	1
18	57480	BRKT,SHIFT	1
19	◦ 56255	SCREW, 1/4-28X .75 NYLHHC	1
20	◦ 57157	WASHER,.750X.250 SP-TRANSAXLE	1
21	302283	SHIFT LEVER	1
22	137185	PIN, COTTER .125 DIA X1.00LG	1
23	55514	KNOB,SHIFT ROUND 1/2-13	1
24	49896	BELT GUIDE	1
25	◦ 271184	NUT, 5/16-18 HEXKEPS	1
26	◦ 120393	WASHER, FLAT .344X .69X.065 Z	2
27	◦ 1498	NUT, 5/16-18 REGHEXCTRLK	1
28	302603	ASSY,BRAKE PEDAL	1
29	319676	ROD,PIVOT	1
30	302601	SPACER,.53IDX.62DX1.406 SLEEVE	1
31	56180	PIN, HAIR	1
32	48761	PAD,CLUTCH/BRAKE PEDAL	1
33	1306	IDLER ARM BRKT TRACTION	1
34	41890	BOLT, .625X .218 HHSH 5/16-18	1
35	◦ 4107	WASHER, FLAT .635X1.31X.07	1
36	◦ 45602	WASHER, FLAT .333X .87X.119	1
37	◦ 1498	NUT, 5/16-18 REGHEXCTRLK	1
38	39659	RETAINER, STRAP BELT	1
39	35374	PULLEY, IDLER V4L 3.06X .62	1
40	45892	BOLT, 3/8-16X1.50 CARR	1
41	◦ 1499	NUT, 3/8-16 REGHXCTRLK	1
42	43980	ROD, .268 DIA CLUTCH	1
43	50562	SPRING,3/8ODX1.625X.055	1
44	54723-930	BRACKET, BRAKE ROD	1
45	20507	BOLT, .437X .156 HHSH 5/16-18	1
46	◦ 120393	WASHER, FLAT .344X .69X.065	1
47	◦ 1498	NUT, 5/16-18 REGHEXCTRLK	1
48	310189-930	BRAKE ROD RIDER	1
49	◦ 120393	WASHER, FLAT .344X .69X.065	1
50	121222	PIN, COTTER .090/.086X.75LG	1
51	◦ 271184	NUT, 5/16-18 HEXKEPS	1
52	◦ 1498	NUT, 5/16-18 REGHEXCTRLK	1
53	49276	SPRING,3/4 ODX6.75X.091	1
54	35410	SPRING .071 X .62 X 4.37	1
55	*	TIRE & RIM, PU 18X8-.8.5 TURWHI	2
56	24167	VALVE STEM	1
57	41105	WHEEL&HUB ASSY 9.50X8 WHITE	1
58		REFER TO TIRE TREAD PAGE	
59	57479	SPACER, .75 X 1.25 X 1.32	2
60	52928	KEY, SQUARE .187SQX2.25LG	2
61	◦ 642	WASHER, FLAT .755X1.31X.075	4
62	◦ 42815	WASHER, FLAT .755X1.53X.07	2
63	36625	RING, RETEX .57X.05	2
64	40394	CAP, 1.500ID X 7/8LG HUB	2

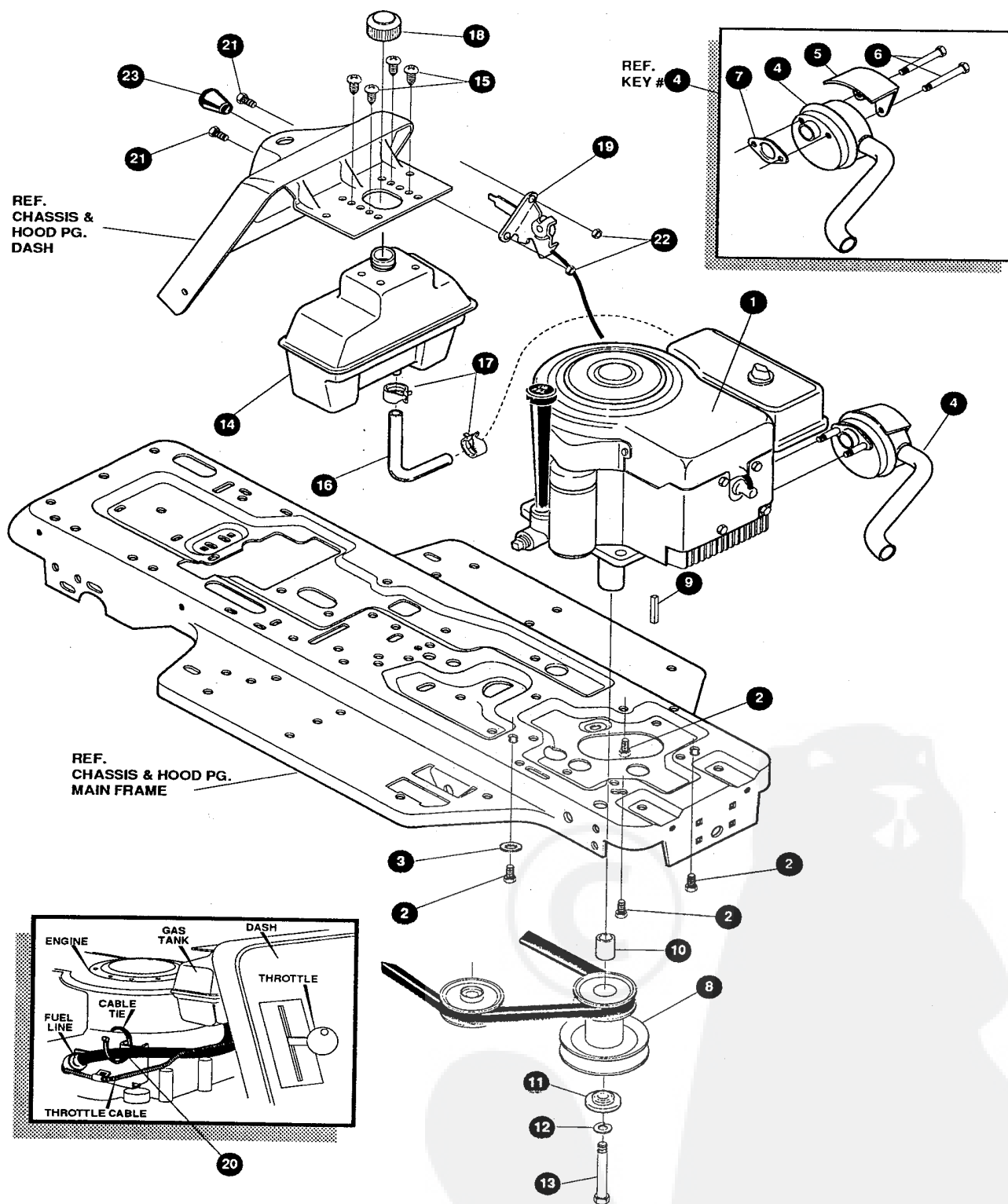
^ Contact your nearest Foote Transaxle dealer.

◦ Indicates STANDARD HARDWARE ITEMS.

* Order INDIVIDUAL PARTS.

38" LAWN TRACTOR MODEL C3554-020

ENGINE & CONTROL ASSEMBLY



319828B

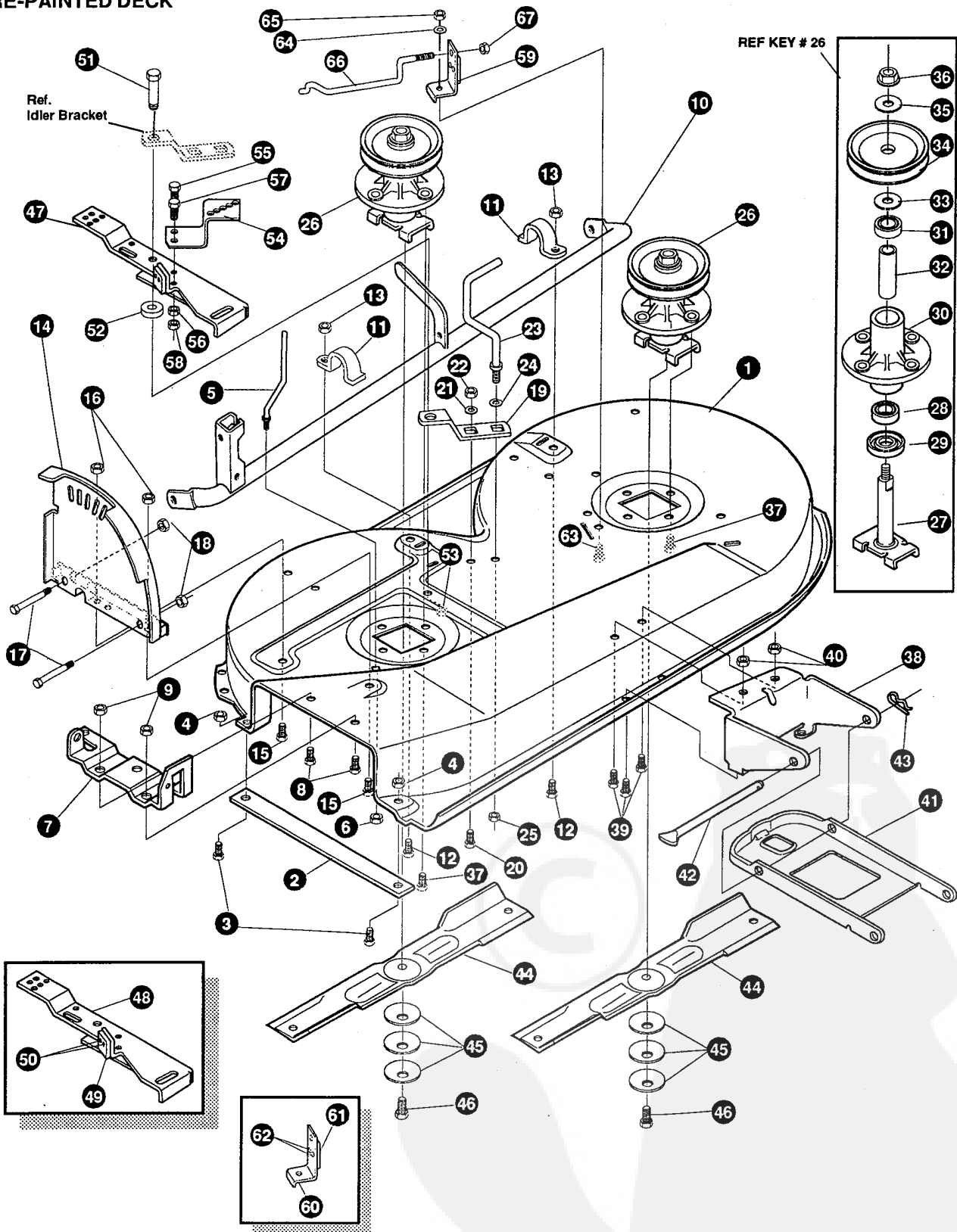
38" LAWN TRACTOR MODEL C3554-020

key#	part#	description	qty.
1	ENGINE	12 HP B&S I/C (SEE ENGINE MANUAL)	1
2	• 50947	SCREW, 3/8-16X1.25 WAHTAP	4
3	• 138489	WASHER, EXLK .384X.69X.04	1
4	305367	MUFFLER-LO TONE NELSON EXPORT	1
5	54767	SHIELD, HEAT, FOR ROUND MUFFLER	1
6	• 173063	SCREW, 5/16-18X3.50 HHC	2
7	46708	GASKET, MUFFLER	1
8	310250	PULLEY, ENGINE, 4.00 OFFSET	1
9	303151	KEY, SQUARE .249SQX4.50LG	1
10	304246	SPACER, 1.01X1.484 ENGIN PULLEY	1
11	56431	WASHER, .980IDX1.38ODX.437PILOT	1
12	• 120383	WASHER, REGSPTLK.459X.78X.12	1
13	• 433146	SCREW, 7/16-20X4.25 HHC	1
14	314989	TANK, FUEL 1 GAL	1
15	• 49050	SCREW, 1/4-10X .75PHPNTAP	4
16	47452	GAS LINE .25ID	12"
17	48672	CLAMP, FUEL LINE	2
18	46704	GAS CAP 1-1/2-7 THD	1
19	320031	THROTTLE CONTROL	1
20	57444	CABLE TIE	1
21	• 35291	SCREW, 10-24X .50 SLHHMA	2
22	• 271166	NUT, #10-24 HEXKEPS	2
23	50607	KNOB, ROUND THROTTLE	1

• Indicates STANDARD HARDWARE ITEMS.

38" LAWN TRACTOR MODEL C3554-020

PRE-PAINTED DECK



NOTE: ALWAYS USE ORIGINAL EQUIPMENT PARTS. Use of service/replacement parts other than original equipment parts may void your warranty.

ALL UNNUMBERED ITEMS ARE INTERCHANGABLE WITH OPPOSITE SIDE

319478B

38" LAWN TRACTOR MODEL C3554-020

key#	part#	description	qty.
1.	315610-853	DECK,MOWER 38"SD	1
2.	57314	BAR, SKID	1
3.	126216	BOLT, 5/16-18X .75 CARR	2
4.	• 271184	NUT, 5/16-18 HEXKEPS	2
5.	57318	GUIDE, BELT 5/16-18 THD	1
6.	• 1498	NUT, 5/16-18 REGHEXCTRLK	1
7.	57360	BRACKET, CHUTE	1
8.	• 120834	SCREW, 5/16-18X .50 HHC	2
9.	• 1498	NUT, 5/16-18 REGHEXCTRLK	2
10.	308641	TUBE, ASSY TORQUE	1
11.	51985	SUPPORT,PIVOT TUBE	2
12.	• 120228	SCREW, 5/16-18X .63 HHC	2
13.	• 1498	NUT, 5/16-18 REGHEXCTRLK	2
14.	308195	QUADRANT,HEIGHT ADJ.,DECK LIFT	1
15.	• 120228	SCREW, 5/16-18X .63 HHC	2
16.	• 1498	NUT, 5/16-18 REGHEXCTRLK	2
17.	• 122040	SCREW, 5/16-18X1.50 HHC	2
18.	• 1498	NUT, 5/16-18 REGHEXCTRLK	2
19.	300179	BRACKET, IDLER SUPPORT	1
20.	• 180077	SCREW, 5/16-18X .75 HHC	1
21.	120393	WASHER, FLAT .344X .69X.065	1
22.	• 44108	NUT, 5/16-18 HWDFLCTRLK	1
23.	314935	GUIDE, BELT 5/16-18THD	1
24.	120393	WASHER, FLAT .344X .69X.065	1
25.	• 44108	NUT, 5/16-18 HWDFLCTRLK	1
26.	56424	QUILL ASSY, 36/39/40/43	2
27.	56425	SHAFT/SADDLE 36"	1
28.	49562	BRNG, BALL .669IDX1.575ODX.472	1
29.	50616	DUST SHIELD	1
30.	55547	QUILL CASTING (1046)	1
31.	49562	BRNG, BALL .669IDX1.575ODX.472	1
32.	50818	SPACER, SLEV .669X .88X3.797	1
33.	51449	SPACER, SLEV .672X .93X .438PM	1
34.	56390	BF/BP PULLEY,26/36" QUILL V5L	1
35.	56365	WASHER, SPECIAL QUILL	1
36.	• 1282	NUT, 7/16-20 WDFLLK	1
37.	• 50634	SCREW, 5/16-18X .88 WAHHTAP	8
38.	320070	BRKT, FRONT DECK	1
39.	• 120228	SCREW, 5/16-18X .63 HHC GR2	4
40.	• 1498	NUT, 5/16-18 REGHEXCTRLK	4
41.	320069	DRAWBAR, DECK	1
42.	58306	ROD, DECK HITCH Z-PL 953	1
43.	8260	PIN, HAIR .091 DIA X1.66LG	1
44.	57299	BLADE, 39" STD-LIFT 19.5	2
45.	2483	WASHER,.39IDX1.25DX.07 BELLVIL	6
46.	• 39573	SCREW, 3/8-24X1.00 NYLHHCGR5	2
47.	300491	IDLER ARM BLK	1
48.	300490	BRKT, IDLER ARM	1
49.	306973	BRAKE PAD - HARD - 232AF	1
50.	41601	RIVET, OVSET .187DIA X .50LG ST	2
51.	300180	BOLT, .50 X1.88 HSH 3/8-16	1
52.	996416	WASHER, FLAT .391X1.00X.125	2
53.	45171	NUT, 3/8-16 HWDFL WHIZ-LOCK	1
54.	314186	BRACKET IDLER	1
55.	• 120228	SCREW, 5/16-18X .63 HHC	1
56.	• 1498	NUT, 5/16-18 REGHEXCTRLK	1
57.	• 120854	SCREW, 1/4-20X .63 HHC	1
58.	• 1502	NUT, 1/4-20 REGHEXCTRLK	1
59.	303247	ASSY.BLADE BRAKE 36,39,45	1
60.	303246	BRAKE ARM	1
61.	306973	BRAKE PAD	1
62.	135624	RIVET, TRSET .185DIA X .41LG ST	2
63.	• 120228	SCREW, 5/16-18X .63 HHC	1
64.	120393	WASHER, FLAT .344X .69X.065	1
65.	• 1498	NUT, 5/16-18 REGHEXCTRLK	1
66.	300316	ROD, BRAKE RELEASE 14.7 39DECK	1
67.	• 1502	NUT, 1/4-20 REGHEXCTRLK	1

• Indicates STANDARD HARDWARE ITEMS.

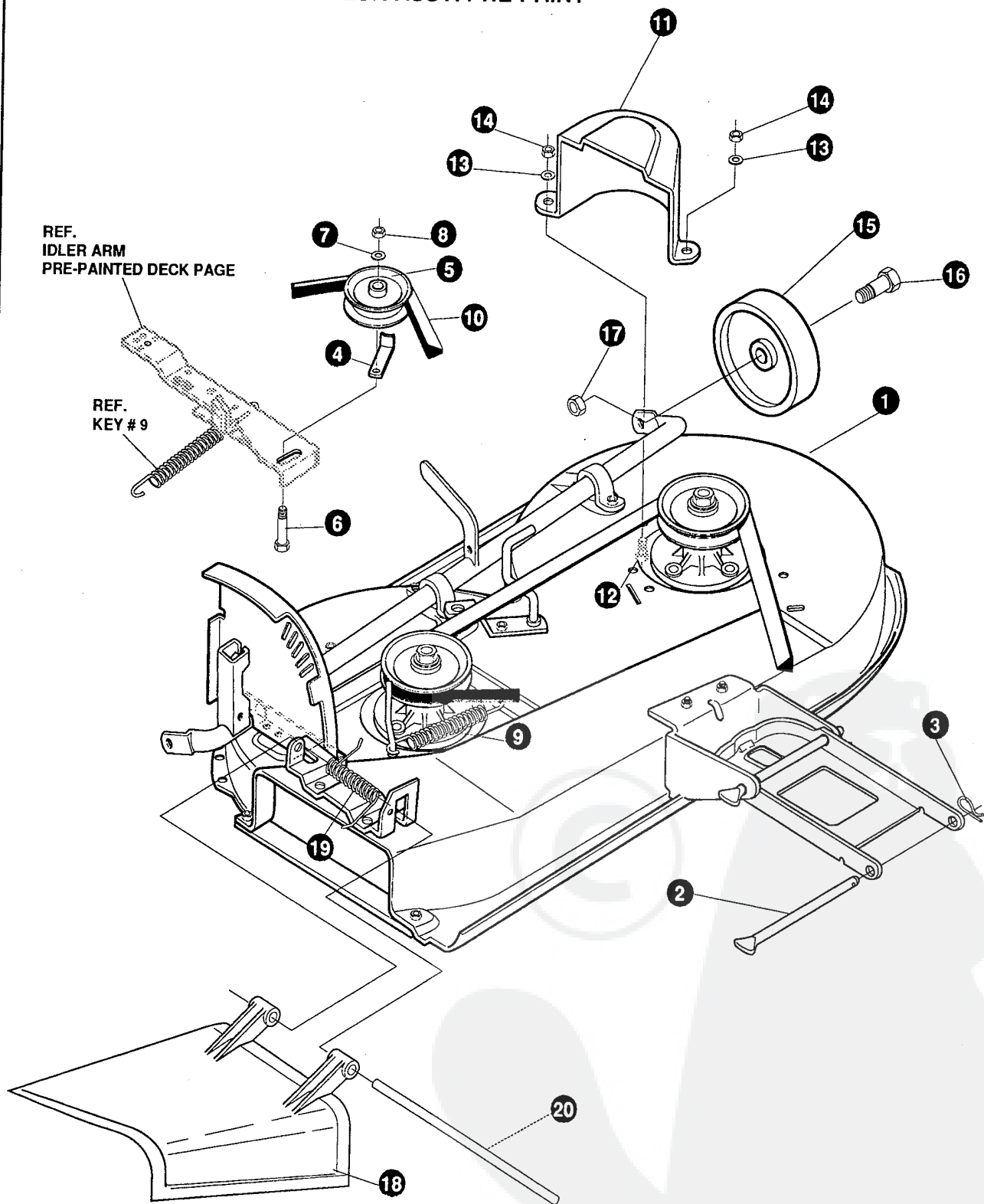
38" LAWN TRACTOR MODEL C3554-020

FINAL DECK ASSEMBLY

REF. 319478
DECK ASSY. PRE-PAINT

REF.
IDLER ARM
PRE-PAINTED DECK PAGE

REF.
KEY #9



NOTE: ALWAYS USE ORIGINAL EQUIPMENT PARTS.
Use of service/replacement parts other than original equipment parts may void your warranty.

**ALL UNNUMBERED
ITEMS ARE INTERCHANGABLE
WITH OPPOSITE SIDE**

319484B

38" LAWN TRACTOR MODEL C3554-020

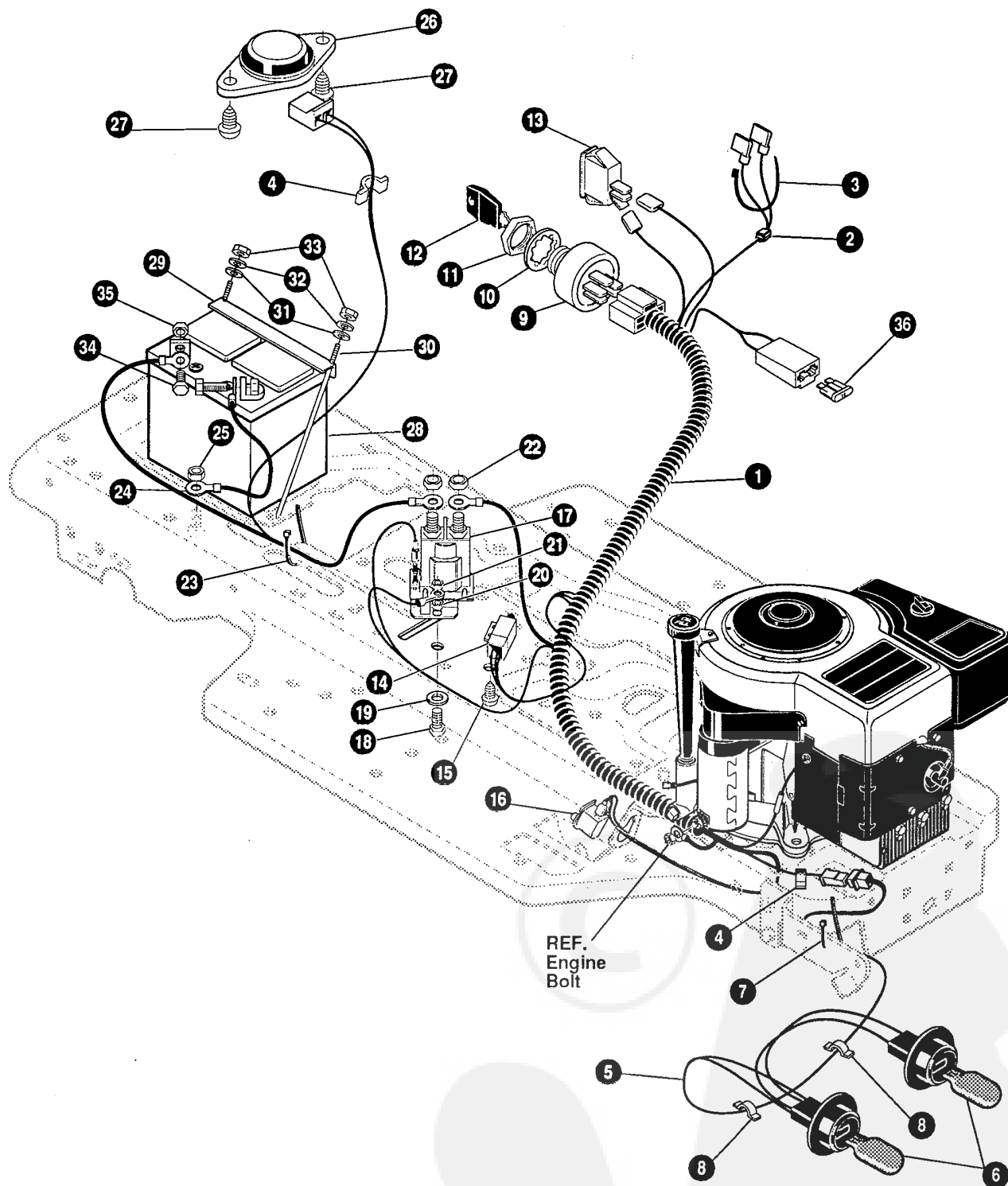
key#	part#	description	qty.
1.	*	DECK, 38SDGS 2WH ASSY	1
2.	58306	ROD, DECK HITCH Z-PL 953	1
3.	8260	PIN, HAIR .091 DIA X 1.66LG	1
4.	1346	RETAINER, BELT	1
5.	310326	PULLEY, IDLER BFF 4.00 WIDE FL	1
6.	57325	BOLT, 3/8-16 X 2.00 CARR	1
7.	120382	WASHER, REGSPTLK.393X.68X.10	1
8.	• 120377	NUT, 3/8-16 REGHX	1
9.	322064	SPRING .75X8.4X.105	1
10.	300680	BELT, V 5L 77.75 KEVLAR	1
11.	302833	GUARD, BELT LH PLASTIC	1
12.	• 120228	SCREW, 5/16-18X .63 HHC	3
13.	120393	WASHER, FLAT .344X .69X.065	3
14.	• 1498	NUT, 5/16-18 REGHEXCTRLK	3
15.	302611	WHEEL, SD 6.00ODX1.38WD	2
16.	• 23763	BOLT, .500X1.390 HHSH 3/8-16	2
17.	1499	NUT, 3/8-16 REGHXCTRLK	2
18.	57818	CHUTE-36SD,39SD,45SD BLACK	1
19.	314975	SPRING TORSION CHUTE DEF.	1
20.	57317	PIVOT ROD, CHUTE	1

* ORDER INDIVIDUAL PARTS.

• STANDARD HARDWARE ITEMS

38" LAWN TRACTOR MODEL C3554-020

ELECTRICAL ASSEMBLY



ALL UNNUMBERED
ITEMS ARE INTERCHANGABLE
WITH OPPOSITE SIDE

NOTE: ALWAYS USE ORIGINAL EQUIPMENT PARTS.
Use of service/replacement parts other than original equipment parts may void your warranty.

320478A

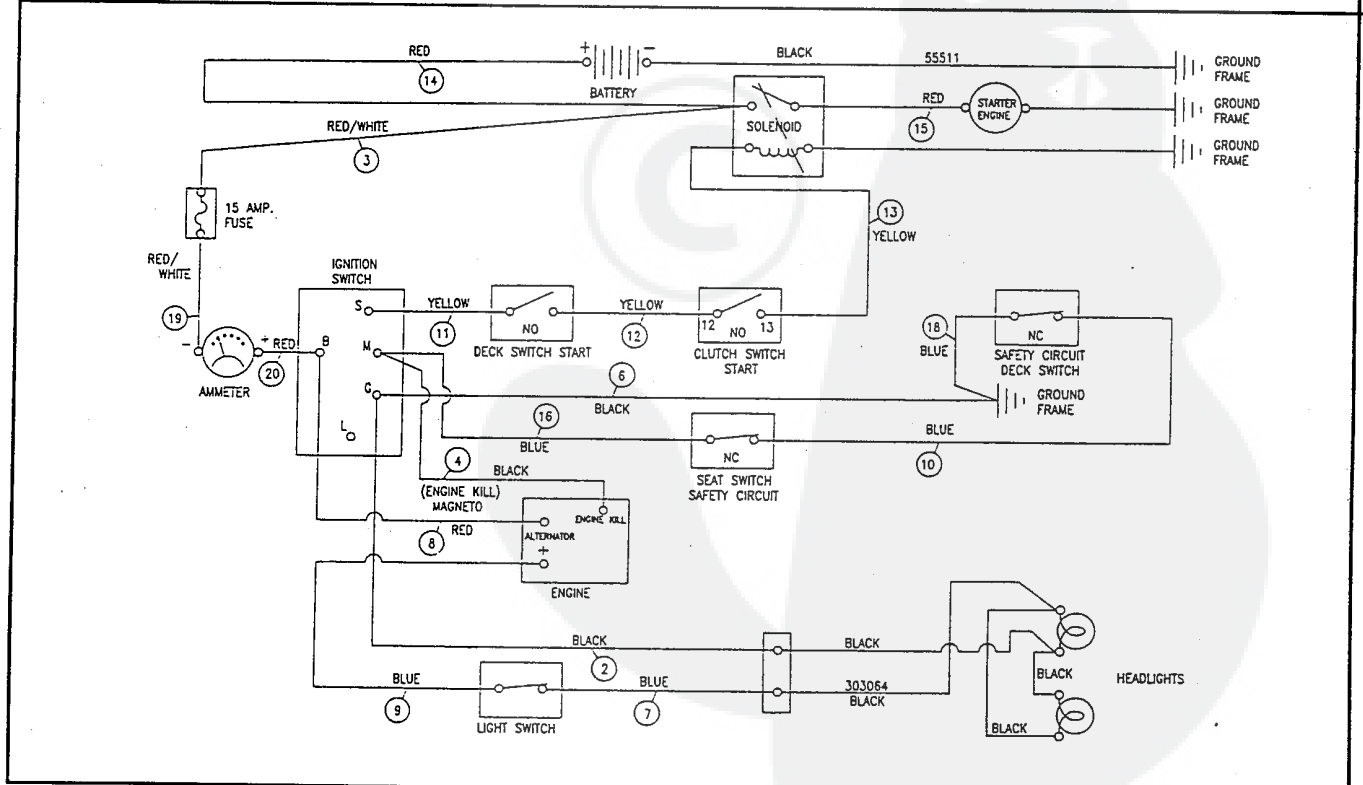
38" LAWN TRACTOR MODEL C3554-020

key#	part#	description	qty.
1.	320048	WIRE HARNESS SF 12B&S IC W/AMM	1
2.	322298	SPLICER	1
3.	57444	TIE,CABLE	1
4.	41482	PRESS CLIP,1.380LG .255ID	2
5.	303064	ASSY,LIGHT WIRE-1/4 TURN	1
6.	52572	BULB, HEADLAMP	2
7.	57444	TIE, CABLE BLACK NYLON 5.62L	1
8.	41482	PRESS CLIP,1.380LG .255ID	2
9.	305720	SWITCH-IGN.(AFTER FIRE) 3 POSN	1
10.	138557	WASHER, REGINTLK.640X1.1X.05	1
11.	48140	NUT, 5/8-32 HXHD IGN SWIT	1
12.	49643	KEY, IGNITION SWITCH	1
13.	300334	LIGHT SWITCH ON/OFF PANEL MNT	1
14.	57476	SWITCH,SCR MNT DP NC NO BLK	1
15.	57220	SCREW, #12 X .50 PHPNHTAP BLK	2
16.	300220	SWITCH,SNAPMNT NO .055/.116BLK	1
17.	53716	SOLENOID	1
18.	187745	SCREW, 1/4-20X .75 HXSEMMA	2
19.	1084	WASHER, FLAT .281X1.00X.063PL	1
20.	1502	NUT, 1/4-20 REGHEXCTRLK	2
21.	271172	NUT, 1/4-20 REGHEXKEPS	1
22.	271187	NUT, 5/16-24 HKEPS	2
23.	57444	TIE, CABLE BLACK NYLON 5.62L	1
24.	55511	WIRE, GROUND, 12.5"	1
25.	271184	NUT, 5/16-18 HEXKEPS	1
26.	57547	SWITCH, SEAT	1
27.	160505	SCREW, 1/4-20X .38PHPNHMA	2
28.	57486	BATTERY, YUASA 12V 5-PLATE	1
29.	56360	BATTERY BRACKET	1
30.	40234	BATTERY ROD	2
31.	120392	WASHER, FLAT .281X .63X.065	2
32.	120380	WASHER, REGSPTLK.263X.49X.07	2
33.	120375	NUT, 1/4-20 REGHEX	2
34.	120854	SCREW, 1/4-20X .63 HHC	2
35.	271172	NUT, 1/4-20 REGHEXKEPS	2
36.	302031	FUSE, 15 AMP SPADE TYPE	1

STANDARD HARDWARE ITEMS

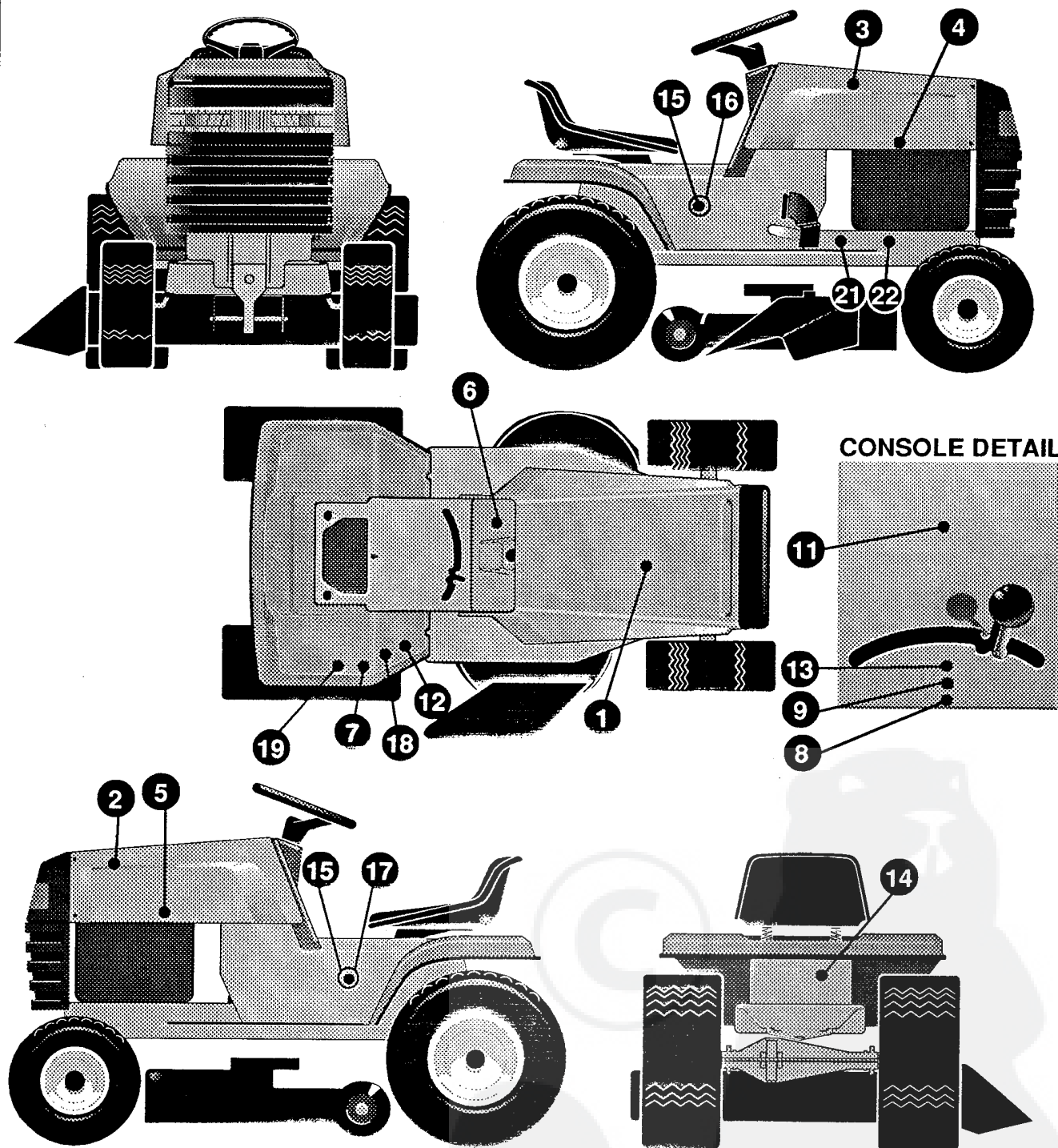
.. Spade type fuse included with the wire harness.

SCHEMATIC DRAWING:



38" LAWN TRACTOR MODEL C3554-020

DECALS



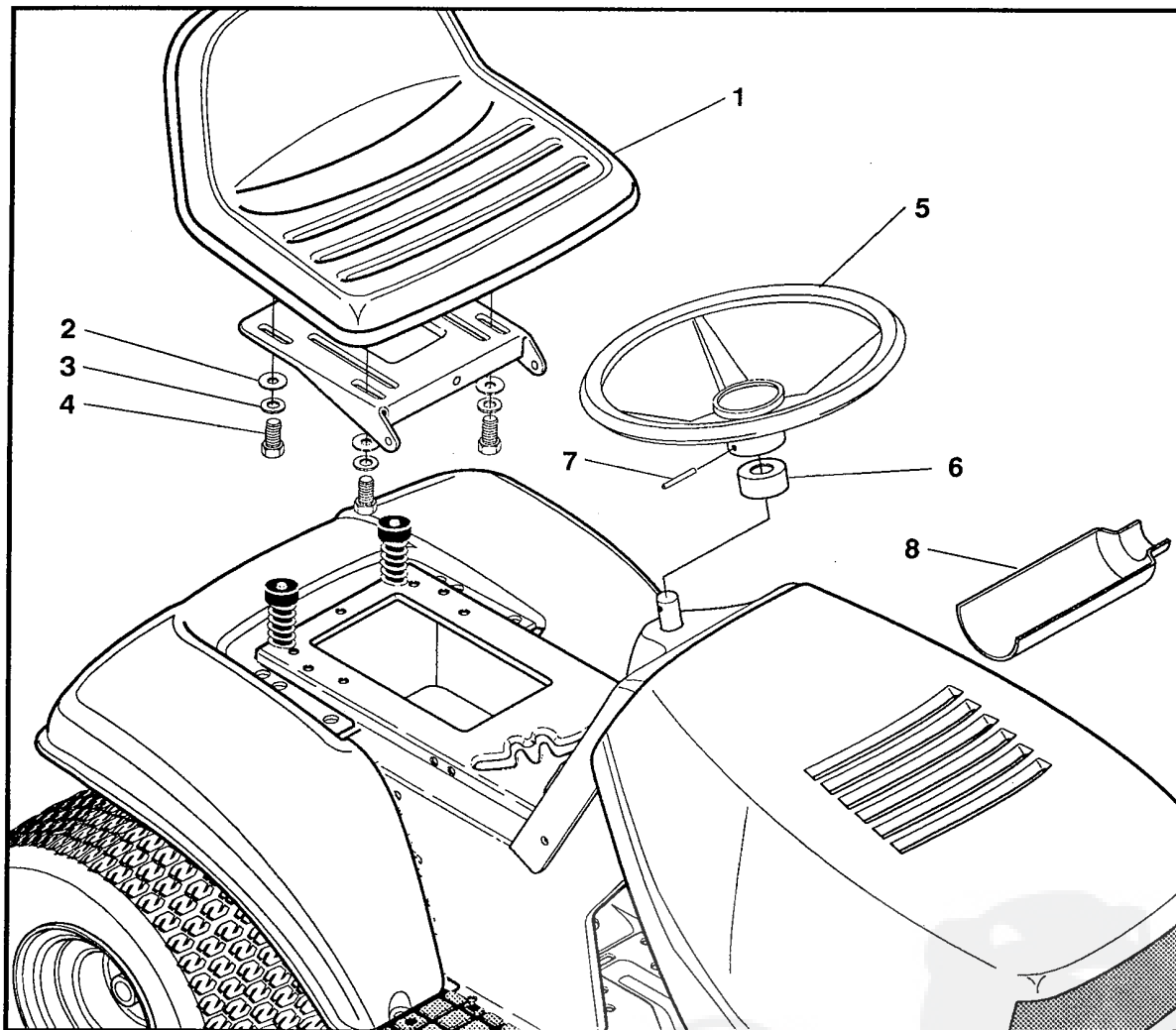
320936C

38" LAWN TRACTOR MODEL C3554-020

key#	part#	description	qty.
1.	55832	PAD, FOAM TOP HOOD H-4	1
2.	55833	PAD, FOAM HOOD H-4 SIDE LH	1
3.	55834	PAD, FOAM HOOD H-4 SIDE RH	1
4.	314456	DECAL, HOODSIDE RH H-21	1
5.	314457	DECAL, HOODSIDE LH H-21	1
6.	320702	DECAL DASH, DYNAMARK	1
7.	68902	DECAL, WARNING, FRENCH/GERMAN	1
8.	69524	DECAL, INSTRUCT CONSOLE TOP GER	1
9.	69525	DECAL, INSTRUCT CONSOLE TOP FR	1
10.		REFERENCE ONLY	1
11.	301104	DECAL, CONSOLE TOP SHIFT 5-SP	1
12.	305770	DECAL, CAUTION TRIANGLE EUROPE	1
13.	307383	DECAL, INSTR. CONSOLE TOP ENGL	1
14.	310436	DECAL, FRENCH SAFETY CERT.	1
15.	314208	NAMEPLATE, 12/38	2
16.	314460	DECAL, CONSOLE RH STRETCH FRM	1
17.	314461	DECAL, CONSOLE LH STRETCH FRM	1
18.	310553	DECAL, DANGER ENGLISH	1
19.	68901	DECAL, BLADE HEIGHT ADJ. EUROPE	1
20.		REFERENCE ONLY	1
21.	67667	DECAL, CHECK OIL LEVEL	1
22.	68903	DECAL, BRAKE/CLUTCH EUROPE	1

38" LAWN TRACTOR MODEL C3554-020

CUSTOMER ASSEMBLY



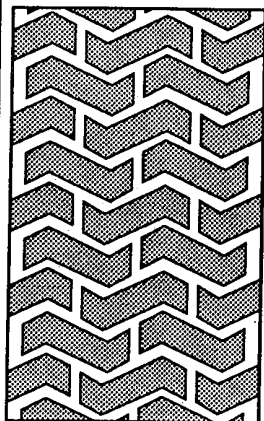
CUSTOMER ASSEMBLY VIEW

315134 PARTS BAG ASSY QTY1

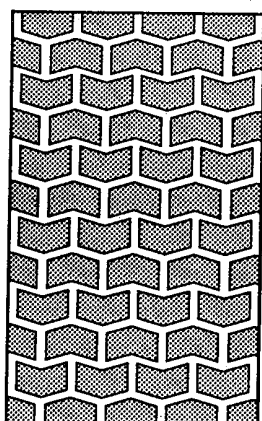
key#	part#	decription	qty
1	57452	SEAT MV350	1
2	120393	WASHER,FLAT .344X.69X.065	4
3	120638	WASHER, HVSPLTLK .328X.60X.109	4
4	122007'	SCREW, 5/16-18X.75 HHC	4
5	301251	STEERING WHEEL	1
6	323758	STEERING, SLEEVE	1
7	456378	ROLL PIN .250DIA X2.0LG	1
8	54873	OIL TROUGH	1

316235B

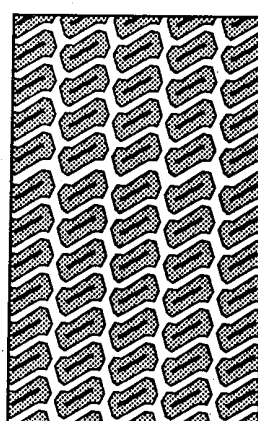
TREAD PATTERNS



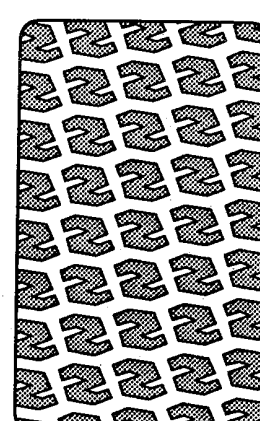
"A"



"B"



"C"



"D"

TIRE SIZE	"A"	"B"	"C"	"D"
11 X 4.00 - 5	42295	319679		
13 X 5.00 - 6	41060	319680		
15 X 6.00 - 6	39830	316702	301140	313952
16 X 6.50 - 8	41081	319682		314539
18 X 8.50 - 8	319683	317400		
18 X 9.50 - 8	41106	316701		313950
20 X 8.00 - 8	319685	319684	57164	314584
20 X 10.00 - 8	58276	319686		313654
20 X 10.00 - 10	55893	319687		
23 X 9.50 - 12	53655	319690	319689	314370

ACCESSORIES

Contact the dealer where your tractor was purchased for the available accessories. If you are unable to contact the dealer, write to the address on the front cover of this manual.

Rear Engine Rider

Model	Description
5708-16	Bagger - Fits 32" Side Discharge
5708-17	Bagger - Fits 36" Side Discharge
5709-02	Front Weight Box - holds 35 lbs.
5648-16	Lawn Sweeper w/dump Release

Lawn Tractor

Model	Description
5708-22	Bagger - Fits 30" Top Discharge
5708-13	Bagger - Fits 36", 38", 39" & 45" Side Discharge
5708-14	Bagger - Fits 40", 42", 43" & 46" Side Discharge
5661-06	42" Snowblade
5661-08	48" Snowblade
5592-00	Tire Chains - 18" x 6.50"
5585-00	Tire Chains - 18" x 9.50" & 20" x 8"
5672-01	Wheel Weights - Front - 1 pr. w/mtg. hdw. - Fits 15" tires
5673-02	Wheel Weights - Rear - 1 pr. w/mtg. hdw. - Fits 18" & 20" tires
5709-03	Front Weights - Fits 30" & 32" Side Discharge
5648-16	Lawn Sweeper w/dump Release
5705-06	42" Two-Stage Snowblower

Garden Tractor - Light Ground Engaging

Model	Description
5708-13	Bagger - Fits 36", 38", 39", & 45" Side Discharge
5708-14	Bagger - Fits 40", 42", 43" & 46" Side Discharge
5661-06	42" Snowblade
5672-01	Wheel Weights - Front 1 pr. w/mtg. hdw. - Fits 15" tires
5673-02	Wheel Weights - Rear - 1 pr. w/mtg. hdw. - Fits 18" & 20" tires
5648-16	Lawn Sweeper w/dump Release
5667-02	Sleeve Hitch - w/lift bar
5668-01	Adaptor (sleeve hitch) for use w/23" tires
5706-00	Tire Chains - 20" x 10"
5671-00	Tire Chains - 23" x 9.50"
5672-02	Wheel Weights - Front - 1 pr. w/mtg. hdw. Fits 16" tires
5673-00	Wheel Weights - Rear - 1 pr. w/mtg. hdw. Fits 23" tires
5674-01*	10" One Bottom Moldboard Plow
5675-01*	Cultivator - 7 row - Adj. 6" - 42" width
5676-01*	Disc Harrow - 8" & 11" disc - Adj. width & disc angle
5677-02*	Tiller - 5 H.P. Self-Powered - 28" width
5705-06	42" Two-Stage Snowblower
5661-08	48" Snowblade

Euro Four Wheel Steer

Model	Description
5708-14	Bagger - Fits 40", 42", 43" & 46" Side Discharge
5705-05	42" One-Stage Snowblower
5661-07	48" Snowblade
5709-04	Rear Weight Box
5648-16	Lawn Sweeper w/dump Release
5706-00	Tire Chains 20" x 10"
5671-00	Tire Chains 23" x 9.50"
5672-02	Wheel Weights - Front - 1 pr. w/mtg. hdw. Fits 16" tires
5673-00	Wheel Weights - Rear - 1 pr. w/mtg. hdw. Fits 23" tires
5672-01	Wheel Weights - Front - 1 pr. w/mtg. hdw. Fits 15" tires
5673-02	Wheel Weights - Rear - 1 pr. w/mtg. hdw. Fits 18" & 20" tires

Euro Two Wheel Steer Garden Tractor

Model	Description
5667-04	Sleeve Hitch - w/lift bar Fits 46"
5674-01*	10" One Bottom Moldboard Plow
5675-01*	Cultivator - 7 row - Adj. 6" - 42" width
5676-01*	Disc Harrow 8" & 11" Disc. Adj. width & disc angle
5677-02*	Tiller 5 H.P. Self-Powered - 28" width
5648-16	Lawn Sweeper w/dump Release

*Requires a sleeve hitch