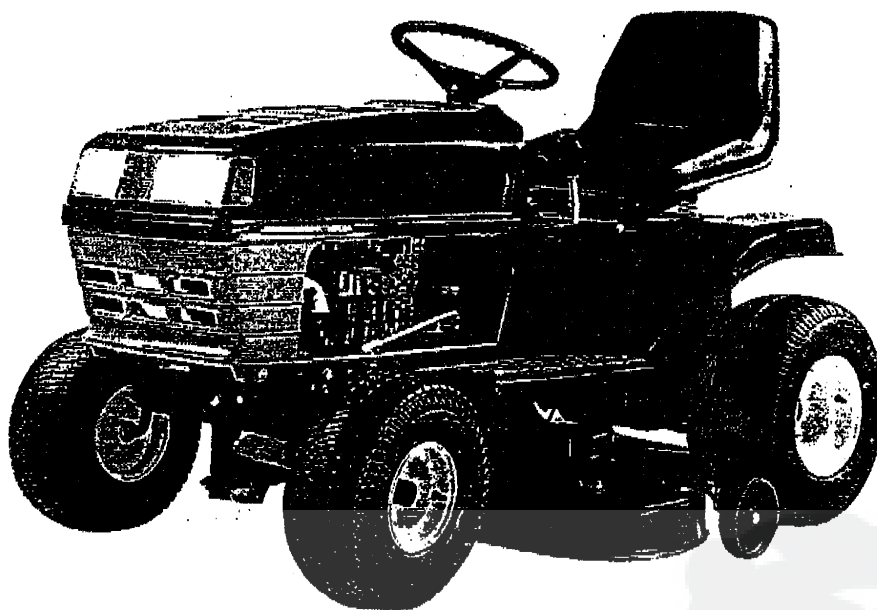


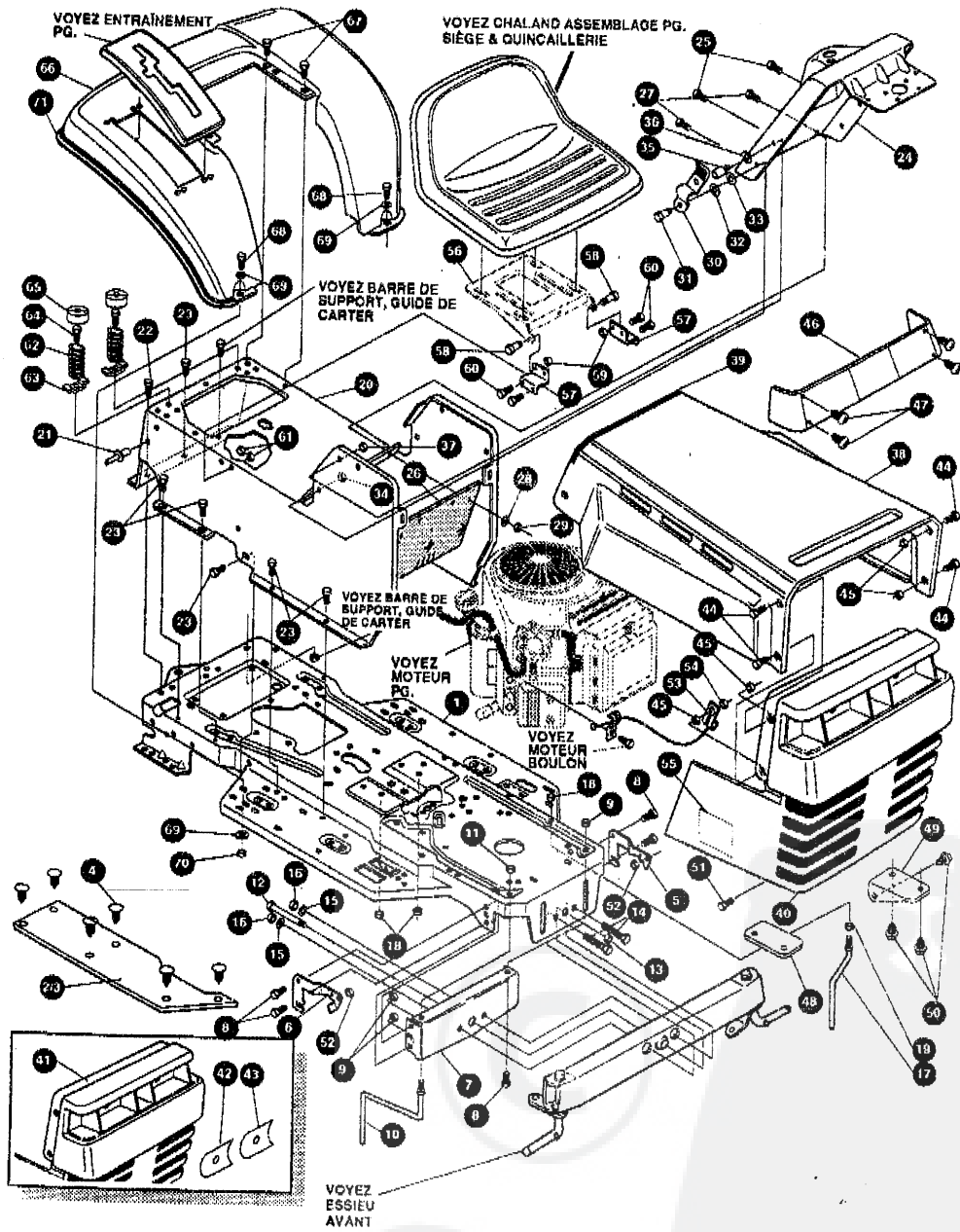
TRACTEUR TONDEUSE MANUEL PIÈCES DE RECHANGE



MODELE C3560-170

TRACTEUR TONDEUSE 43" MODELE C3560-170

ENSEMBLE CHASSIS & CAPOT



UTILISEZ DES PIÈCES D'ORIGINE POUR CONSERVER L'APPLICATION DE LA GARANTIE.

TOUTES LES PIÈCES NON RÉFÉRÉES SONT INTERCHANGEABLES AVEC LEURS OPPOSÉS.

32245CA

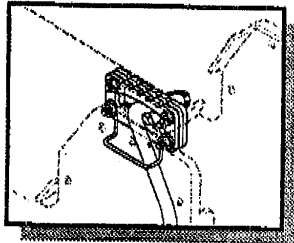
TRACTEUR TONDEUSE 43" MODELE C3560-170

Clé #	No de pièces	Description	Qty.
1	321708-854	FRAME,LF MAIN P920/F4360	1
2	314799	FOOTPAD,LH,P-LIFT	1
3	310006	FOOTPAD,RH	1
4	309235	FASTENER, RATCHET	12
5	58088-853	BRKT,GRILLE,L.H.	1
6	58088-853	BRKT,GRILLE,R.H.	1
7	313541-853	BRACKET, FRONT AXLE	1
8	• 56030	SCREW, 5/16-18X.75WDFLLK	5
9	• 55273	NUT, 5/16-18 HXWDFLLK	5
10	300440	GUIDE, BELT, RIDER	1
11	• 1498	NUT, 5/16-18 REGHEXCTRLK	1
12	308207	BOLT, .625X2.180 HSH 1/2-13NC	1
13	309008	NUT, 1/2-13 REGHCTRLK	1
14	• 122207	SCREW, 3/8-16X3.00 HHC	2
15	2483	WASHER, .391DX1.25DX.07 BELLVIL	2
16	• 1499	NUT, 3/8-16 REGHXCTRLK	2
17	300635	GUIDE,BELT SHORT 15" WHEEL	1
18	• 124824	NUT, 5/16-18 HEXJAM	1
19	• 271190	NUT, 3/8-16 HEXKEPS	1
20	315120-854	CONSOLE H14/H15/STL, SOF,P-LIFT	1
21	46763	RIVET, POP, .187DIA X .450LG ST	1
22	• 35497	SCREW, 5/16-18 X .50 WAHHTAP	1
23	• 995346	SCREW, 1/4-20X .50 WAHHTAP	12
24	309447-853	DASH	1
25	• 995346	SCREW, 1/4-20X .50 WAHHTAP	2
26	312306	BAFFLE CONSOLE SOUND EXPORT LF	1
27	• 300314	SCREW, 1/4-20X .88WAHHTAP	2
28	120392	WASHER, FLAT .281X .63X.065	2
29	• 1502	NUT, 1/4-20 REGHEXCTRLK	2
30	57159	LATCH, .94WDX.047 ASSY HOOD	2
31	8482	BOLT, .375X .156 HSH 5/16-18	2
32	• 120394	WASHER, FLAT .406X .81X.065	2
33	• 120393	WASHER, FLAT .344X .69X.065	2
34	• 1498	NUT, 5/16-18 REGHEXCTRLK	2
35	53446	PIN, 5/16-18 HOOD LATCH	2
36	138538	WASHER, REGINTLK.320X.61X.03	2
37	• 46174	NUT, 5/16-18 HEXWDFLLK WHIZ	2
38	52661-854	HOOD	1
39	47453	EDGING,WIDE	27.5"
40	303055	ASSY,GRILLE G-12 BLACK WESTAUT	1
41	302954	GRILLE	1
42	301828	FOIL,REFLECTOR, RH WA GRILL	1
43	301829	FOIL,REFLECTOR, LH WA GRILL	1
44	• 53225	SCREW, 1/4-20X1.25 WAHHC	4
45	• 50352	NUT, 1/4-20 WDFLLK TOPLOCK	4
46	302073	LENS,CLEAR W/O TABS NO LOGO	1
47	• 57796	SCREW, #6 X .50 PLASTITE	4
48	301894-853	SUPPORT, GRILLE RH	1
49	301895-853	SUPPORT, GRILLE LH	1
50	• 56021	SCREW, 1/4-14X .75 SLWATAP	6
51	36149	BOLT, .375X .500 HSH 5/16-18	2
52	• 1498	NUT, 5/16-18 REGHEXCTRLK	2
53	311094	LANYARD,HOOD	1
54	• 50352	NUT, 1/4-20 WDFLLK TOPLOCK	1
55	301452	FOIL, HEAT REFLECTOR	2
56	58367-854	PLATE, SEAT F-5 SF & LF	1
57	310660-854	BRACKET, F-5 SEAT SUPPORT	2
58	20507	BOLT, .437X .156 HSH 5/16-18	2
59	• 1498	NUT, 5/16-18 REGHEXCTRLK	2
60	• 48901	SCREW, 5/16-18X .63 HHC	4
61	• 1498	NUT, 5/16-18 REGHEXCTRLK	4
62	57153	SPRING,SEAT 2.53LG,1.49OD	2
63	1341	CLAMP,SPRING 1.17"ID	2
64	• 44811	SCREW, 1/4-20X .75 HXWATAP	2
65	56907	COVER,SEAT SPRING 1.51DX1.0LG	2
66	308654-854	FENDER F6,SOF,GS,P-LIFT LF	1
67	• 995346	SCREW, 1/4-20X .50 WAHHTAP	4
68	• 122017	SCREW, 5/16-18X1.00 HHC	2
69	• 446363	WASHER, FLAT .375X .88X.082	4
70	• 1498	NUT, 5/16-18 REGHEXCTRLK	2
71	55021	TRIM,STRIP	77.5"
72	323955	FR. OPERATOR'S MANUAL (NOT ILLUSTRATED)	1
73	324512	FR. PARTS MANUAL (NOT ILLUSTRATED)	1
74	324254	FR. AIR ASSIST MANAUL (NOT ILLUSTRATED)	1
75	324366	FR. GRASS CATCHER MANUALNOT ILLUSTRATED)	1

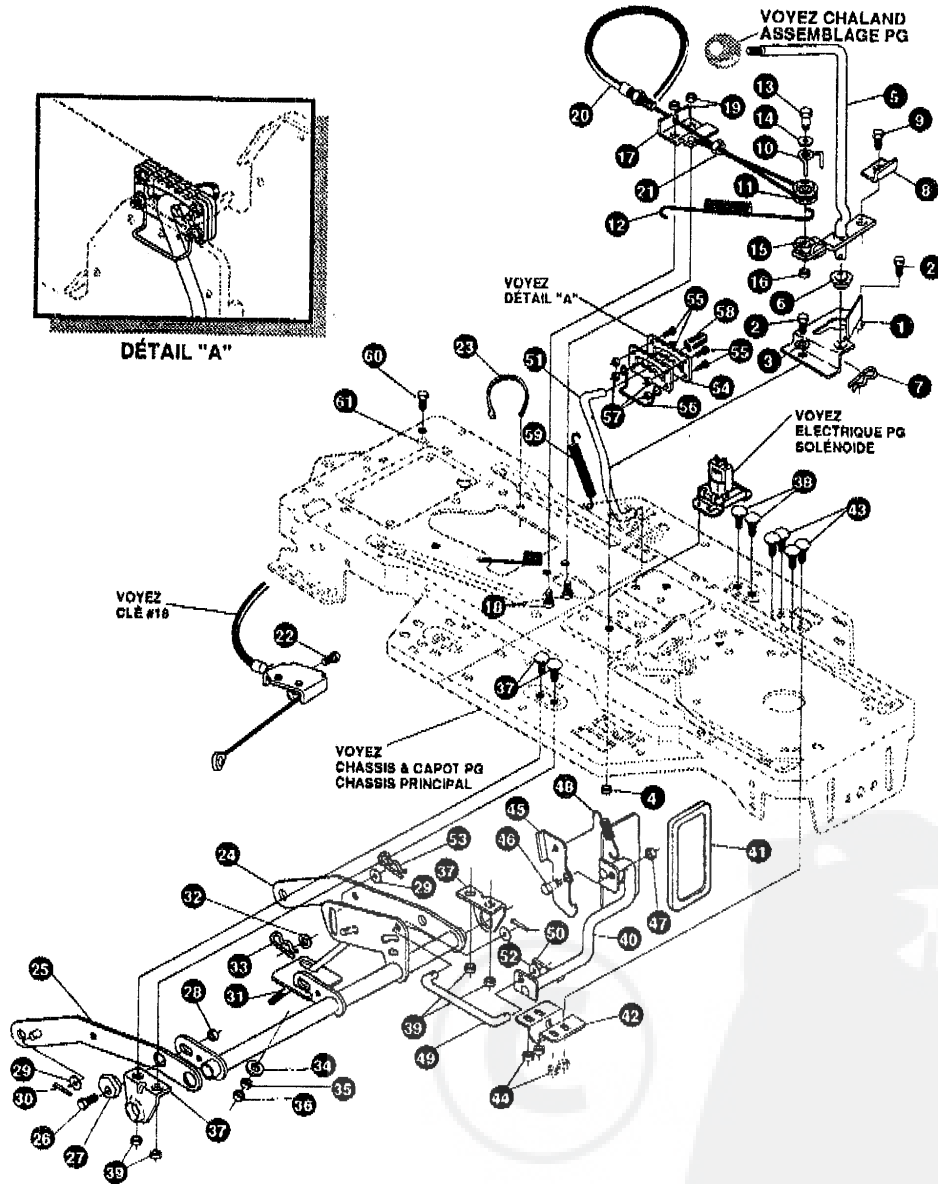
• STANDARD HARDWARE ITEMS

TRACTEUR TONDEUSE 43" MODELE C3560-170

ENSEMBLE SUSPENSION TONDEUSE



DÉTAIL "A"



UTILISEZ DES PIÈCES D'ORIGINE POUR CONSERVER L'APPLICATION DE LA GARANTIE.

TOUTES LES PIÈCES NON RÉFÉRÉES SONT INTERCHANGEABLES AVEC LEURS OPPOSÉS.

3244061

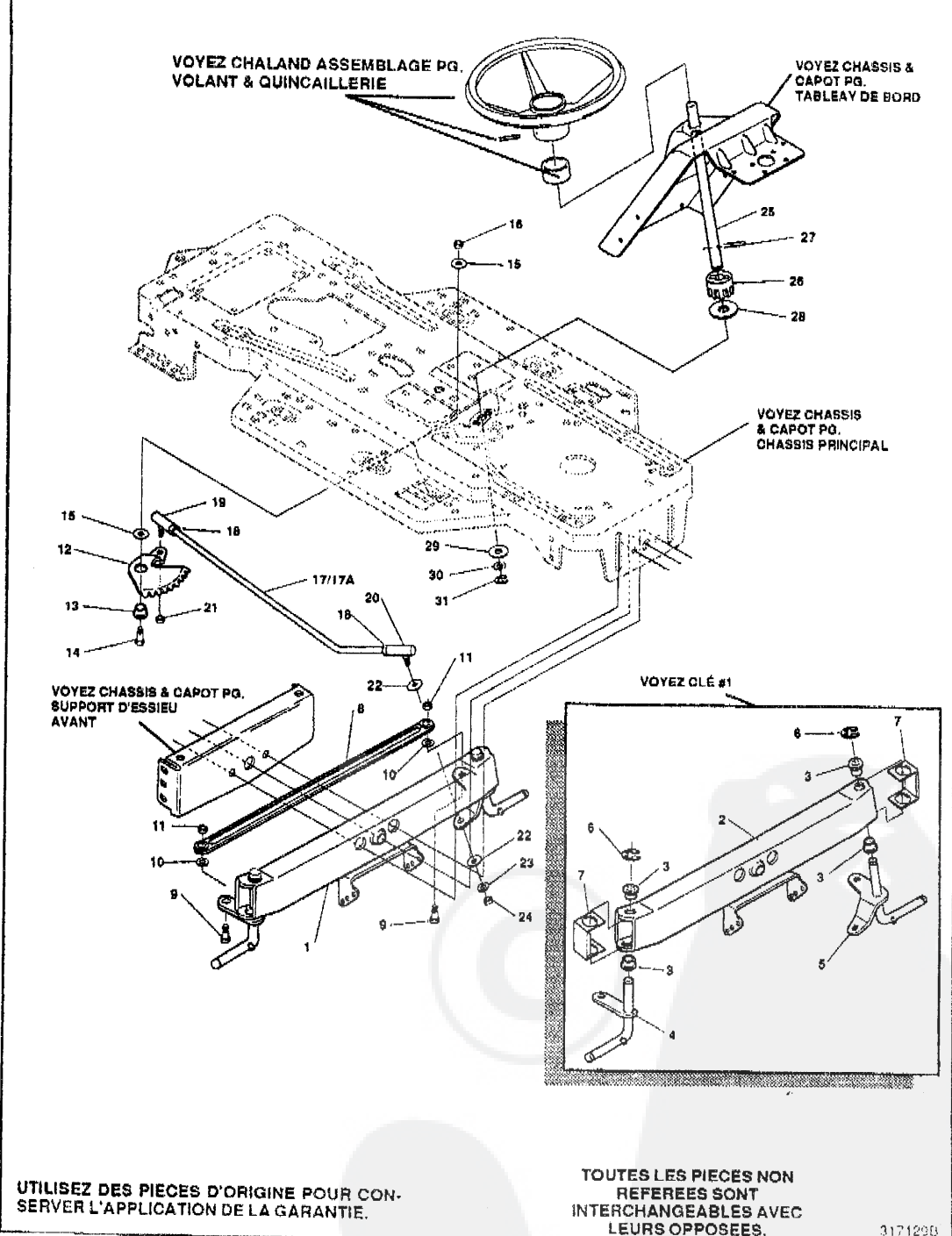
TRACTEUR TONDEUSE 43" MODELE C3560-170

Clé#	No. De Pièces	Description	Qty.
1	320075-853	BRACKET,CLUT-ENGAGELEVERBLK	1
2	• 180079	SCREW, 5/16-18X1.00 HHC	2
3	120393	WASHER, FLAT .344X .69X.065	2
4	• 1498	NUT, 5/16-18 REGHEXCTRLK	2
5	304791	ASSY,CLUTCH LEVER, SHORT	1
6	50148	BEARING,FL. .503IDX.628OD	1
7	8260	PIN, HAIR .091 DIA X1.66LG	1
8	318341	BRACKET, SWITCH ENGAGE	1
9	35498	SCREW, 5/16-18X .75 WAHTAP	1
10	324032	CABLE KEEPER	1
11	48306	PULLEY, POWDER METAL	1
12	316648	SPRING 12.88 LONG	1
13	324045	BOLT, .375X .665 HSH 1/4-20	1
14	315194	WASHER, FLAT 1.38 X .51 X .043 Z/YZ	1
15	52456	BRACKET RETAINER	1
16	• 1502	NUT, 1/4-20 REGHEXCTRLK	1
17	300898-853	BRKT, FRAME CABLE	1
18	• 180020	SCREW, 1/4-20X .75 HHC	2
19	• 1502	NUT, 1/4-20 REGHEXCTRLK	2
20	324055	ASSY, CABLE, BLADE ENGAGE	1
21	120613	NUT, 1/4-28 HJAM	1
22	35498	SCREW, 5/16-18X .75 WAHTAP	1
23	57444	TIE, CABLE BLACK	1
24	322835-853	LIFT ASSY, LH P-LIFT J	1
25	300169-853	ASSY, LINK, RIGHT SIDE	1
26	• 180079	SCREW, 5/16-18X1.00 HHC	1
27	58247	ADJUSTING NUT	1
28	• 1498	NUT, 5/16-18 REGHEXCTRLK	1
29	417098	WASHER, FLAT .531X1.05X.095	2
30	8260	PIN, HAIR .091 DIA X1.66LG	2
31	322821	ROD, ADJUSTING "J" P-LIFT	1
32	120394	WASHER, FLAT .406 X .81 X .065	1
33	36368	PIN, HAIR .072 DIA. X 1.13 LG	1
34	998416	WASHER, FLAT .391 X 1.00 X .125	1
35	120377	NUT, 3/8-16 REG HX	1
36	322467	NUT, 3/8-16 REG HX NK LOC	1
37	58248-853	BRKT, REAR, HANG, SUSP.	2
38	126211	BOLT, 5/16-18X .63 CARR	4
39	• 1498	NUT, 5/16-18 REGHEXCTRLK	4
40	314962-853	PEDAL ASSY, DECK HEIGHT BLK	1
41	314488	PAD, LIFT PEDAL	1
42	329751	BRACKET, LIFT ARM	1
43	126211	BOLT, 5/16-18X .63 CARR	4
44	44108	NUT, 5/16-18 HWDFLCTRLK	4
45	315342	LATCH, PEDAL LIFT	1
46	314829	BOLT, .56 X .13 HSH 3/8-16	1
47	• 1498	NUT, 3/8-16 REGHEXCTRLK	1
48	314489	SPRING, LIFT LATCH	1
49	314792	ROD, PIVOT	1
50	121222	PIN, COTTER .090/.086X.75	1
51	321385	ROD, MEMORY	2
52	274517	WASHER, FLAT .406X .73X.063	1
53	36368	PIN, HAIR .072DIA X 1.13LG	1
54	315341	BRACKET, MEMORY	1
55	44811	SCREW, 1/4-20X.75 HWATAP	4
56	324038	GUIDE, MEMORY ROD	1
57	• 1502	NUT, 1/4-20 REGHEXCTRLK	4
58	314969	CAP, MEMORY ROD 3RID X .75	1
59	314837	SPRING, MEMORY	1
60	180077	SCREW, 5/16-18 X .75 HHC	1
61	1498	NUT, 5/16-18 REGHEXCTRLK	1

• STANDARD HARDWARE ITEMS.

TRACTEUR TONDEUSE 43" MODELE C3560-170

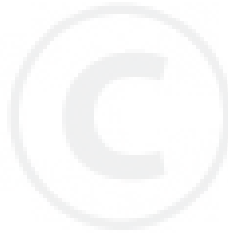
ENSEMBLE DIRECTION AVANT



TRACTEUR TONDEUSE 43" MODELE C3560-170

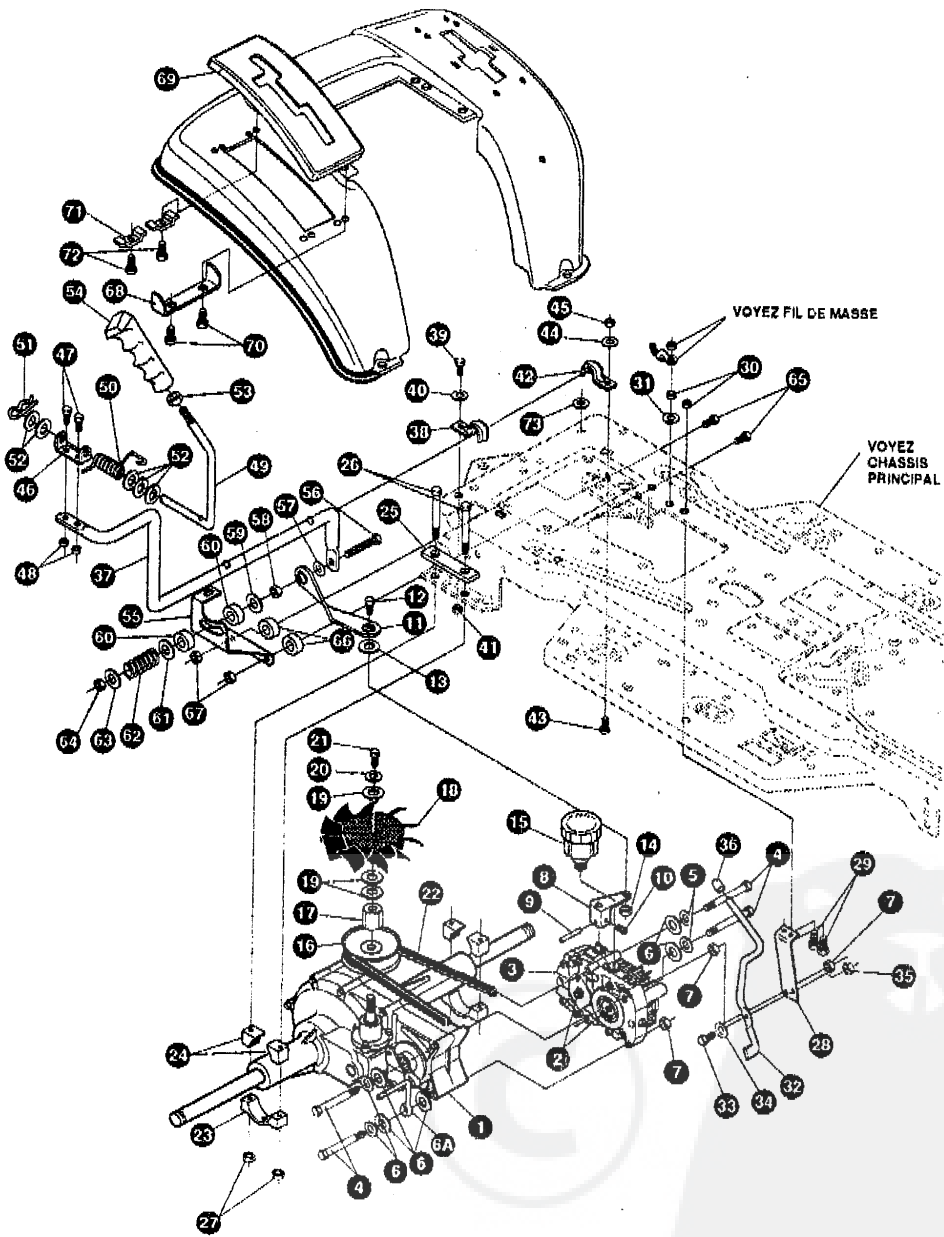
Clé #	No De Pièces	Description	Qty.
1	*	AXLE, FRONT ASSY SUS LF	1
2	300272	FRONT AXLE SUSPENDED	1
3	52407	SPINDLE BEARING	4
4	9180	ASSY, SPINDLE,RH	1
5	314088	ASSY, SPINDLE,LH	1
6	36625	RING, RETEX .57X.05TRU5133-75	2
7	*53373	AXLE COVER	2
8	304590	TIE ROD ASSY, 19.81LG	1
9	0180128	SCREW, 3/8-18X1.75 HHC	2
10	120382	WASHER, REGSPTLK.393X.68X.10	2
11	01499	NUT, 3/8-18 REGHXCTRLK	2
12	58289	SECTOR, STEERING LF	1
13	52406	BRNG, FL ECC.510DX .998ODX .56	1
14	180177	SCREW, 1/2-13X1.60 HHC	1
15	22265	WASHER, FLAT .515X1.38X 119PL	2
16	01500	NUT, 1/2-13 REGHCTRLK	1
17	300146	SF DRAGLINK ASSY, .5 DIA	1
17A	58291	STEERING LINK	1
18	0124925	NUT, 3/8-24 REGHEXJAM	2
19	57158	BALL JOINT, 3/8 THD SHORT STUD	1
20	21275	BALL JOINT, 3/8 TH'D LONG STUD	1
21	046692	NUT, 3/8-24 WDFLHLK WHIZ	1
22	0120396	WASHER, FLAT .531X1.06X.095	2
23	0120382	WASHER, REGSPTLK.393X.68X.10	1
24	0120369	NUT, 3/8-24 REGHEX	1
25	58243	SHAFT, STEERING LF	1
26	58244	PINION, STEERING LF	1
27	58274	PIN, DOWEL .2500 OD*1.76LG	1
28	301410	BRNG, FL .752IDX1.061ODX .24	1
29	301398	WASHER, FORMED1.135X1.53X.12	1
30	0 21682	WASHER, FLAT .765X1.25X.042	1
31	36625	RING, RETEX .57X.05TRU5133-75	1

0 Indicates STANDARD HARDWARE ITEMS.
 * ORDER INDIVIDUAL PARTS.



TRACTEUR TONDEUSE 43" MODELE C3560-170

TRANSMISSION



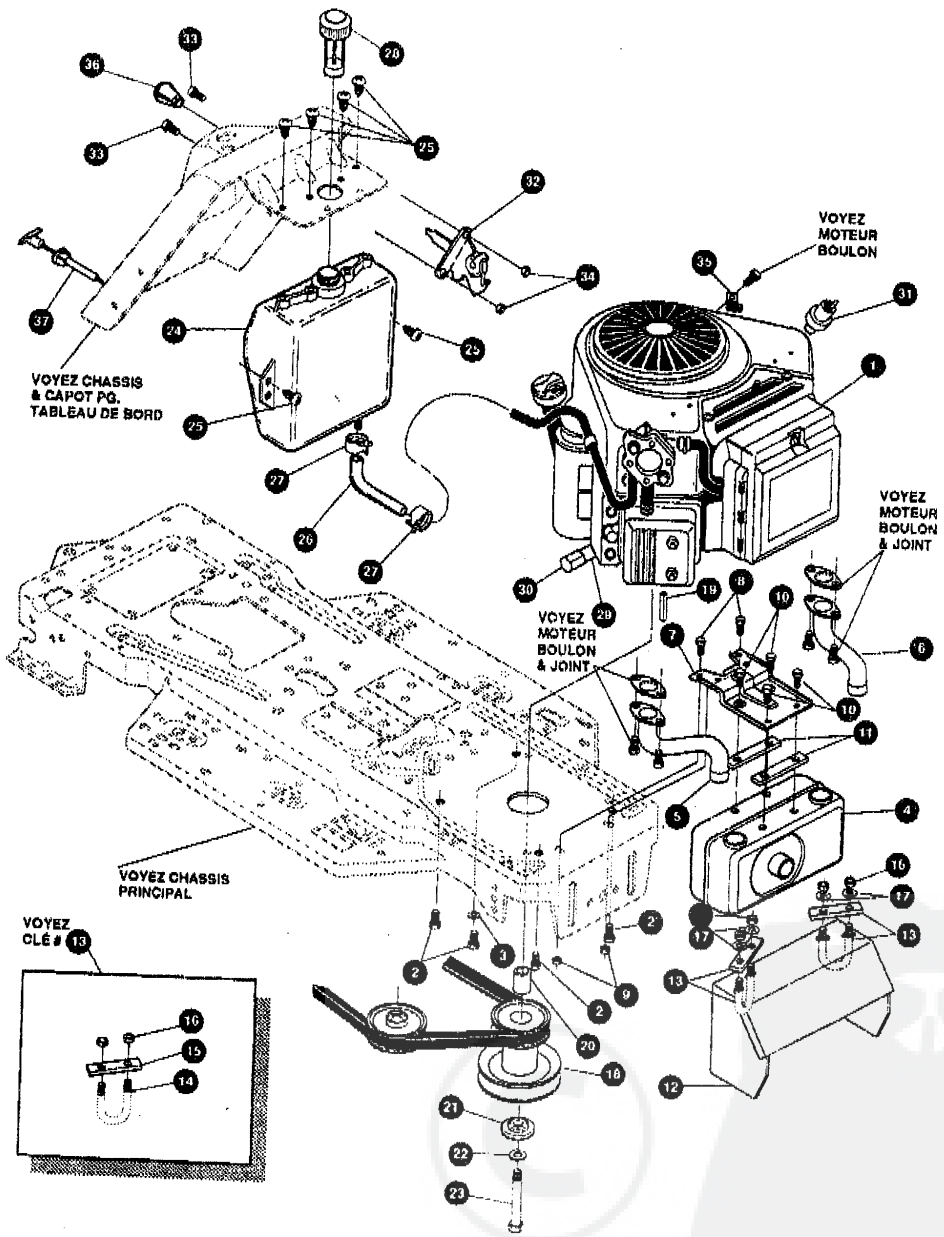
UTILISEZ DES PIECES D'ORIGINE POUR CONSERVER L'APPLICATION DE LA GARANTIE.

TOUTES LES PIECES NON REFEREES SONT INTERCHANGEABLES AVEC LEURS OPPOSEES.

324061C

TRACTEUR TONDEUSE 43" MODELE C3560-170

MOTEUR ENSEMBLE



UTILISEZ DES PIÈCES D'ORIGINE POUR CONSERVER L'APPLICATION DE LA GARANTIE.

TOUTES LES PIÈCES NON RÉFÉREES SONT INTERCHANGEABLES AVEC LEURS OPPOSÉS.

324060A

TRACTEUR TONDEUSE 43" MODELE C3560-170

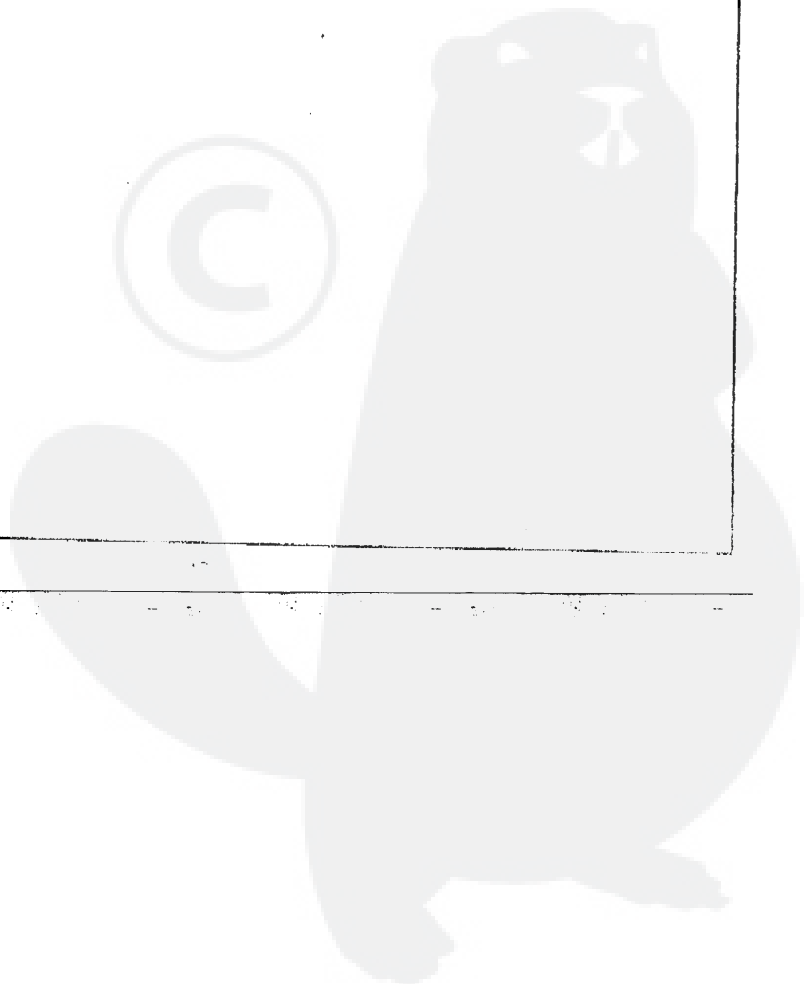
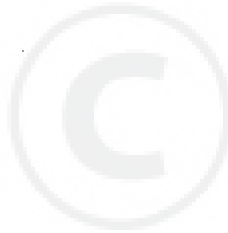
Clé #	No de pièces	Description	Qty.
1	ENGINE	16HP BS V/TWIN 16AMP (SEE ENGINE MANUAL)	1
2	50947	SCREW, 3/8-16X1.25 WAHTAP	4
3	138489	WASHER, EXLK .384X.69X.04	1
4	316342	MUFFLER 15HP B&S VANG H10/G13	1
5	316346	EXHAUST TUBE ASM. RH	1
6	316347	EXHAUST TUBE ASM. LH	1
7	309577	BRACKET, MUFFLER	1
8	56030	SCREW, 5/16-18X.75WDFLLK GR5	2
9	56273	NUT, 5/16-18 HXWDFLLK	2
10	44811	SCREW, 1/4-20X .75 HXWATAP	4
11	313370	PLATE, GUIDE	2
12	317321	HEAT SHIELD, MUFFLER	1
13	317834	U-BOLT & PLATE ASSY	1
14	317336	U-BOLT 1/4-20 X 1.0 X 1.75	1
15	31733	7 PLATE, U-BOLT	1
16	120375	NUT, 1/4-20 REGHEX	2
17	120380	WASHER, REGSPTLK.263X.49X.07	4
18	316802	PULLEY, ENG 4.400FF/5.00D/3.00D	1
19	57791	KEY, SQUARE .250SQX5.00LG	1
20	304246	SPACER, 1.01X1.484 ENGIN PULLEY	1
21	56431	WASHER, .980IDX1.380DX.437PILOT	1
22	120383	WASHER, REGSPTLK.459X.78X.12	1
23	428644	SCREW, 7/16-20X5.00 HHC	1
24	314992	TANK, FUEL 2GAL CLEAR	1
25	49050	SCREW, 1/4-10X .75PHNTAPGR2	6
26	47452	GAS LINE .25ID BULK LENGTH	10'
27	48672	CLAMP, FUEL LINE	2
28	56183	GAS GAUGE	1
29	307174	NIPPLE 3/8-18 NPT X 4"	1
30	47828	CAP, PIPE 3/8-18 NPT	1
31	314797	OIL SENSOR, B&S TWIN CYL.	1
32	310280	CONTROL, THROTTLE 33.5LG BS VAN	1
33	320553	SCREW, 10-24X .83PHPNMA GR2BK	2
34	271166	NUT, #10-24 HEXKEPS	2
35	57669	RETAINER, .31IDX.62X.03 WIRE	1
36	50607	KNOB, ROUND THROTTLE	1
37	310279	CONTROL, CHOKE 36.25LG	1

* Indicates STANDARD HARDWARE ITEMS.

TRACTEUR TONDEUSE 43" MODELE C3560-170

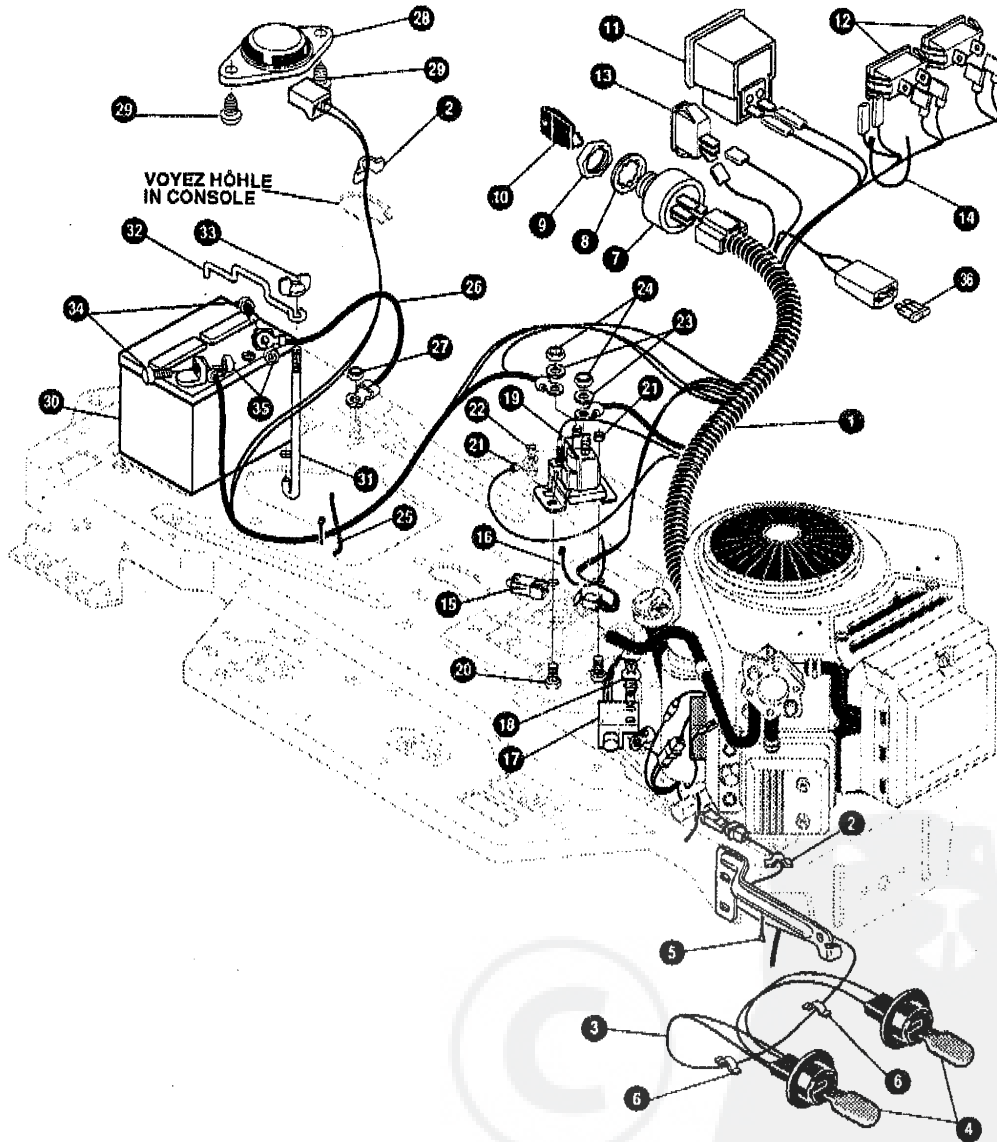
Clé#	No. De Pièces	Description	Qty.
1	321144-853	DECK, 43" MOWER 2-WH BLACK 853 EXPORT	1
2	58306	ROD, DECK HITCH	1
3	8260	PIN, HAIR .091 DIA X 1.66LG	1
4	1346	GUIDE, BELT, IDLER	1
5	314107	SPRING, TENSION 5.00LG+17LB/IN	1
6	310326	PULLEY, IDLER BFF 4.00 WIDE FL	1
7	126416	BOLT, 3/8-16X1.75 CARR	1
8	• 44374	NUT, 3/8-16 HXWDFLLK	1
9	35410	SPRING, .071 X .62 X 4.37	1
10	• 1498	NUT, 5/16-18 REGHEXCTRLK	1
11	318372	BELT, V 5L 85.00 KEVLAR	1
12	324814	GUARD, BELT LH PLASTIC	1
13	57101	CARRIAGE BOLT	3
14	309436	PUSHNUT 5/16 NON-SERVICEABLE	3
15	120393	WASHER, FLAT .344X .69X.065	3
16	• 1498	NUT, 5/16-18 REGHEXCTRLK	3

• STANDARD HARDWARE ITEMS



TRACTEUR TONDEUSE 43" MODELE C3560-170

FAISCEAU ELECTRIQUE



UTILISEZ DES PIECES D'ORIGINE POUR CONSERVER L'APPLICATION DE LA GARANTIE.

TOUTES LES PIECES NON REFEREES SONT INTERCHANGEABLES AVEC LEURS OPPOSEES.

320399B

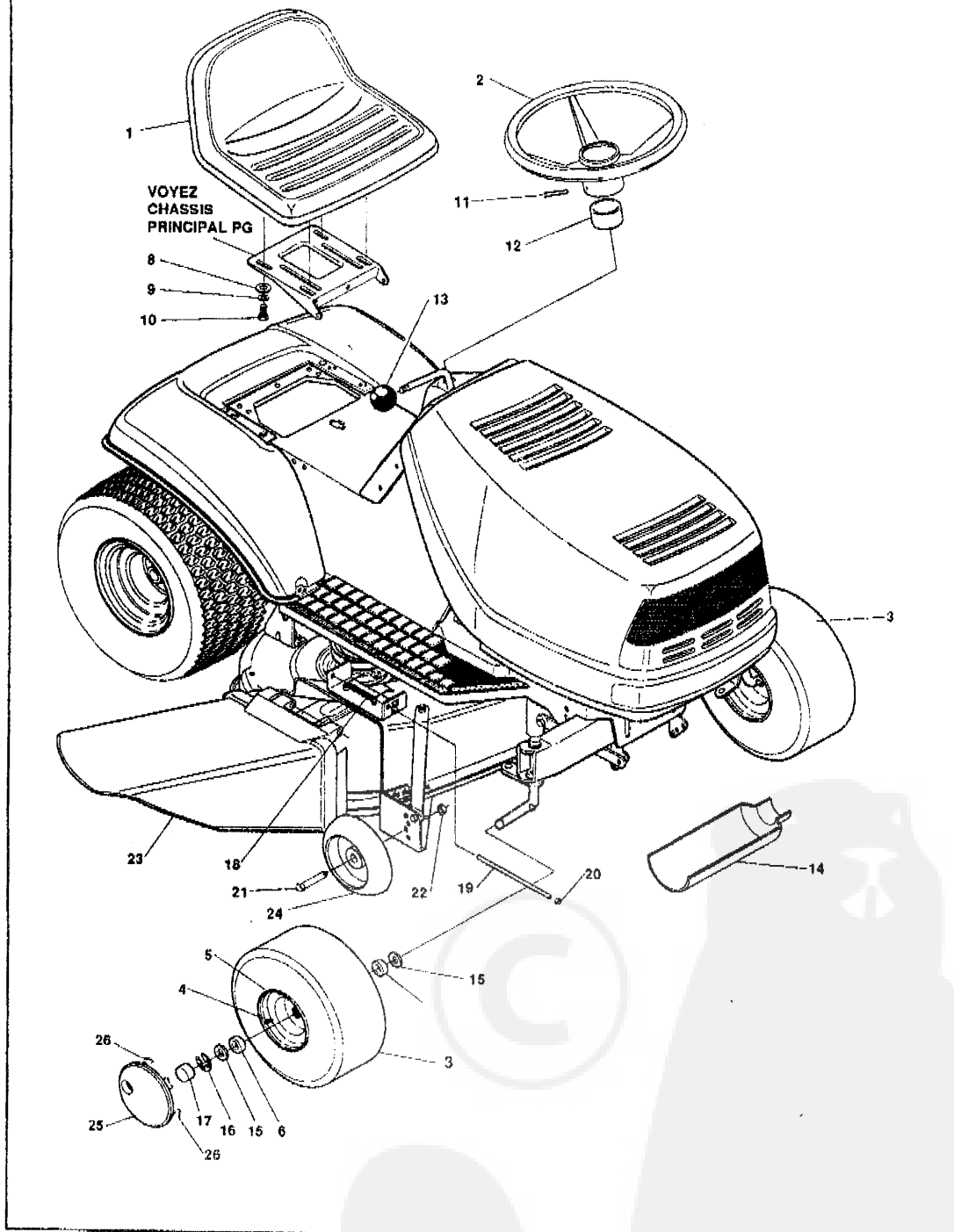
TRACTEUR TONDEUSE 43" MODELE C3560-170

Clé #	No. De Pièces	Description	Qty.
1.	320393	WIRE, HARNES 14-16BSVAN WRAPPED	1
2.	41482	PRESS CLIP, 1.380LG .255ID	2
3.	303064	ASSY, LIGHT WIRE-1/4 TURN	1
4.	52572	BULB, HEADLAMP	2
5.	57444	TIE, CABLE BLACK NYLON 5.62L	1
6.	41482	PRESS CLIP, 1.380LG .255ID	2
7.	305720	SWITCH-IGN.(AFTER FIRE)	1
8.	138557	WASHER, REGINTLK 640X1.1X.05	1
9.	48140	NUT, 5/8-32 HXHD IGN SWIT	1
10.	300626	KEY, IGNITION SWITCH	1
11.	300133	AMMETER	1
12.	300255	LIGHT, INDICATOR PANEL MNT	2
13.	300334	LIGHT SWITCH ON/OFF PANEL MNT	1
14.	57444	TIE, CABLE BLACK NYLON 5.62L	1
15.	320092	SWITCH, DOUBLE POLE NO/NC	1
16.	57444	TIE, CABLE BLACK NYLON 5.62L	1
17.	57476	SWITCH, SCR MNT DP NC	1
18.	57220	SCREW, #12 X .50 PHPNHTAP	2
19.	53716	SOLENOID	1
20.	187745	SCREW, 1/4-20X .75 HXSEMMA	2
21.	• 1502	NUT, 1/4-20 REGHEXCTRLK	2
22.	• 271172	NUT, 1/4-20 REGHEXKEPS	1
23.	138485	WASHER, EXLK .320X.61X.03	2
24.	• 120368	NUT, 5/16-24 REGHEX	2
25.	57444	TIE, CABLE BLACK NYLON 5.62	1
26.	55511	WIRE, GROUND, 12.5"	1
27.	271184	NUT, 5/16-18 HEXKEPS	1
28.	57547	SWITCH, SEAT	1
29.	160505	SCREW, 1/4-20X .38PHPNHMA	2
30.	302257	BATTERY 12V 7 PLATE/ 24 AMP	1
31.	57551	ROD, BATTERY	1
32.	57552	ROD, BATTERY, TOP	1
33.	325232	NUT, WING 1/4-20 NYLON	1
34.	• 120854	SCREW, 1/4-20X .63 HHC	2
35.	• 271172	NUT, 1/4-20 REGHEXKEPS	2
36.	** 302031	FUSE, 15 amp SPADE TYPE	1

** SPADE TYPE FUSE INCLUDED WITH THE WIRE HARNESS
 •STANDARD HARDWARE ITEMS

TRACTEUR TONDEUSE 43" MODELE C3560-170

CHALAND ASSEMBLAGE



TRACTEUR TONDEUSE 43" MODELE C3560-170

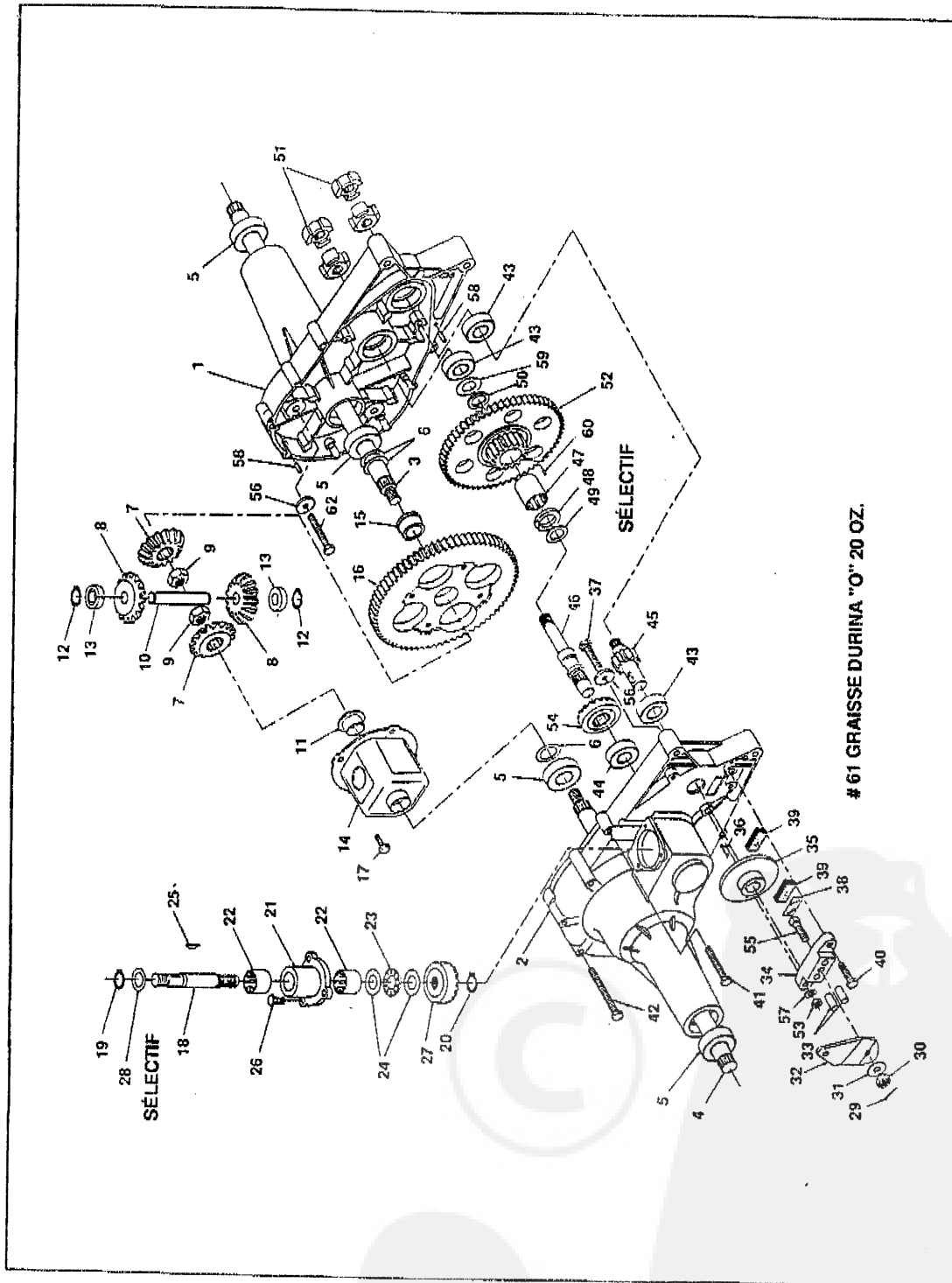
VUE DE CHALAND ASSEMBLAGE

317355 SAC DE PIÈCES DÉTACHÉES CONTENANT:

Clé #	No de Pièces	Description	Qty
1	307661	SEAT MV540	1
2	301251	STEERING WHEEL 13" STD	1
3	301140	TIRE, 15X6-6 WHITE	2
4	24167	VALVE STEM	1
5	39829	WHEEL W/BEARINGS	1
6	39979	BEARINGS	1
7	306669	CLIP	2
8	120393	WASHER, FLAT .344X.69X.065	8
9	120638	WASHER, HVSPTLK .328X.60X.09	4
10	122007	SCREW, 5/16-18X.75 HHC	4
11	456378	PIN, SPRING .250DIA X 2.00LG	1
12	57212	COVER, STEERING SHAFT	1
13	55514	KNOB, SHIFT	1
14	54873	OIL TROUGH	1
15	642	WASHER, FLAT .755X1.31X.075	1
16	36625	RING, RETEX	4
17	40394	HUB CAP	2
18	314975	TORSION SPRING	1
19	304424	ROD, PIVOT	1
20	3535	NUT, PUSH	1
21	29768	BOLT, .500X1.390 HSSH 3/8-16	2
22	1499	NUT, 3/8-16 REGHXCTRLK	2
23	304422	CHUTE DEFLECTOR	1
24	302611	DECK WHEEL	2
25	306571	HUB CAP 6" SILVER 325/854	2

374059A

BOÎTE-PONT HYDROSTATIQUE

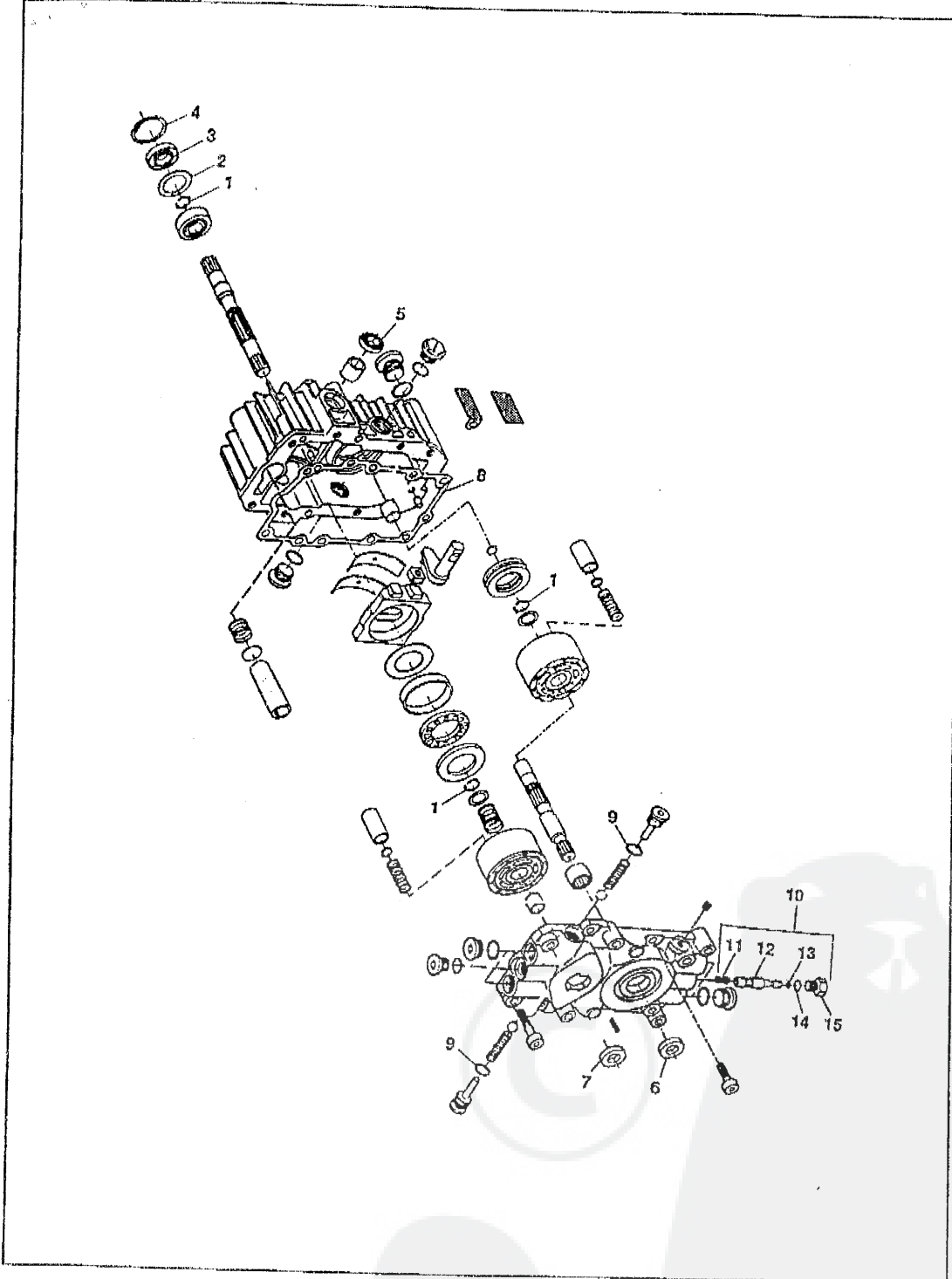


61 GRAISSE DURINA "O" 20 OZ.

HYDROSTATIC TRANSAXLE

Repère	No. Pièce	Description	Qty.	Repère	No. Pièce	Description	Qty.
	*324090	ASSY, HOUSING HALF LH			*324098	ASSY, REDUCTION GEAR	
1	^	HOUSING HALF L.H.	1	47	^	BEARING, NEEDLE	
5	^	BEARING, BALL 3/4ID X 40MM OD X 12 MM	2	48	^	BRONZE THRUST BRG 5/8ID X 1-1/4OD X 7/64 THK.	1
43	^	BEARING, BALL	2	49	^	WASHER, FLAT .62ID X 1.0 OD X .050 THK.	1
	*324092	ASSY, HOUSING HALF RH		----	^	WASHER, FLAT .62ID X 1.0 OD X .040 THK.	AR
2	^	HOUSING HALF RH	1	50	^	GREASE, SEAL BRONZE	1
5	^	BEARING, BALL 3/4ID X 40MM OD X 12 MM	2	52	^	GEAR, 60 AND 17 TOOTH	1
43	^	BEARING, BALL	1	59	^	WASHER, FLAT .62ID X 1.0 OD X .030 THK.	1
44	^	BEARING, BALL	1	60	^	PIN, DOWEL	1
	*324093	ASSY, DIFFERENTIAL/AXLE		25	323688	KEY, HI-PRO 3/32 X 5/8 DIA.	1
3	^	AXLE L.H. 3/4"	1	29	323671	PIN, COTTER	1
4	^	AXLE R.H. 3/4"	1	30	323691	NUT, CASTLE 5/16-24	1
6	^	WASHER, FLAT 3/4ID X 1-1/8OD X .025 THK	3	31	323684	WASHER, FLAT .343ID X .88OD X .062 THK.	1
7	^	GEAR, MITER	2	32	323665	ARM, BRAKE ACTUATOR	1
8	^	GEAR, MITER	2	33	323681	PIN, BRAKE ACTUATING	2
9	^	NUT, HEX JAM W/PATCH 1/2-20	2	34	324088	BRAKE, YOKE	1
10	^	SHAFT, CROSS	1	35	323663	DISC, BRAKE	1
11	^	BEARING, FL 3/4 ID X 7/8 OD	1	36	323692	KEY, HI-PRO 3/16 X 5/8" DIA.	1
12	^	SNAP RING	2	37	324092	SCREW, HEX 1/4-20 X 1.50 LONG	1
13	^	BEARING, THRUST	2	38	323687	PLATE, PUCK	1
14	^	HOUSING DIFFERENTIAL	1	39	323685	PUCK, BRAKE	2
15	^	BEARING, FLANGE	1	40	323711	SCREW, HEX W/PATCH 1/4-20 X 1.00 LG	1
16	^	GEAR, DIFFERENTIAL 72 TOOTH	1	41	323677	SCREW, HEX SELF-TAP 1/4-20 X 2.00 LG	2
17	^	LOCKING BOLT, 1/4-28 X 9/16" LG	4	42	323678	SCREW, HEX SELF-TAP 1/4-20 X 3.00 LG	4
	*324095	ASSY, INPUT PINION HSG		45	323680	SHAFT, PINION W/11 TOOTH GEAR	1
18	^	SHAFT, INPUT	1	46	323656	SHAFT, DRIVE	1
19	^	SNAP, RING	1	51	323661	COUPLING	4
20	^	RING, RETAINING 7/16" DIA. EXT.	1	53	323650	NUT, HEX 1/4-20	1
21	^	HOUSING, INPUT BEARING	1	54	323655	GEAR, DRIVE PINION 17 T.	1
22	^	BEARING, NEEDLE	2	55	324088	BOLT, SQUARE HEAD	1
23	^	BEARING, THRUST	1	56	323703	WASHER, 15/16OD X .265ID X .125 THK.	1
24	^	WASHER, FLAT 5/8ID X 1-1/4OD X .030 THK.	2	57	323649	WASHER, 1/4" SPRING LOCK	1
25	^	KEY, HI-PRO 3/32 X 5/8 DIA.	1	58	323699	PIN, ROLL 3/16" DIA X 1/2" LG	2
26	^	SCREW, HEX W/PATCH 1/4-20 X 3/4 LONG	3	61	324089	TYPE "O" GREASE (10 OZ. TUBE) (20 OZ. REQ'D)	2
27	^	GEAR, INPUT PINION 17 TOOTH	1				
28	^	WASHER, FLAT .62ID X 1.0 OD X .050 THK.	1				
----	^	WASHER, FLAT .62ID X 1.0 OD X .040 THK.	AR				

AR - AS REQUIRED
 * - THESE SOLD BY ASSEMBLY ONLY.
 ^ - THIS IS NOT A SERVICEABLE PART



HYDROSTATIC PUMP

Qty #	No. De Pieces	Description
	310227	HYDROSTATIC PUMP (COMPLETE)
	313306	OVERHAUL SEAL KIT (CONTAINS KEY NO.'S 1-8, 13 AND 14)
1		RING-RETAINING SPACER
2		SEAL-LIP
3		RING-RETAINING
4		SEAL-LIP
5		SEAL-LIP
6		SEAL-LIP
7		GASKET-CENTER SECTION
8		O-RING
9		
10	313305	BY-PASS VALVE KIT-COMplete (INCL. KEY NO.'S 11-15)
11		SPRING-HELICAL COMP
12		BY-PASS SPOOL
13		O-RING
14		O-RING
15		PLUG-BY-PASS

