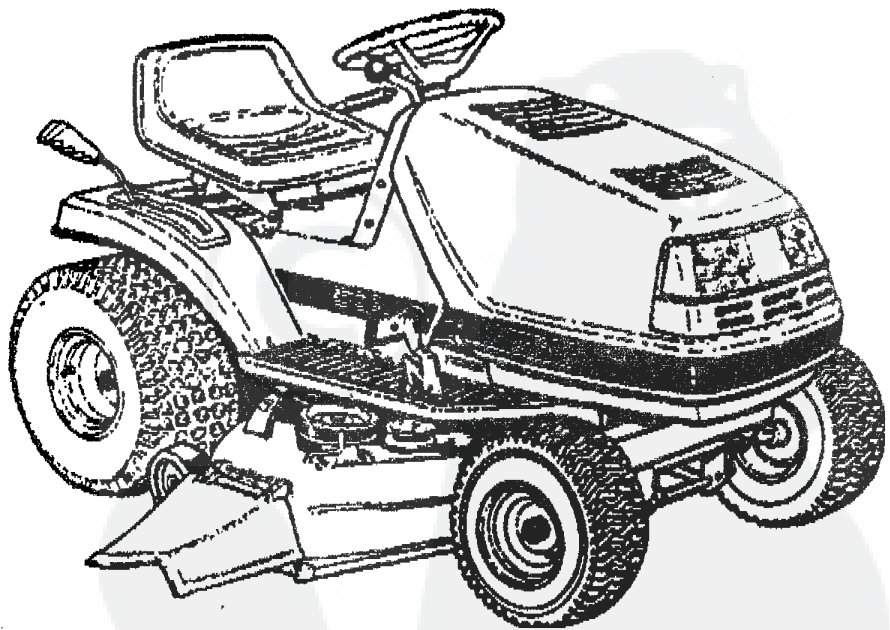
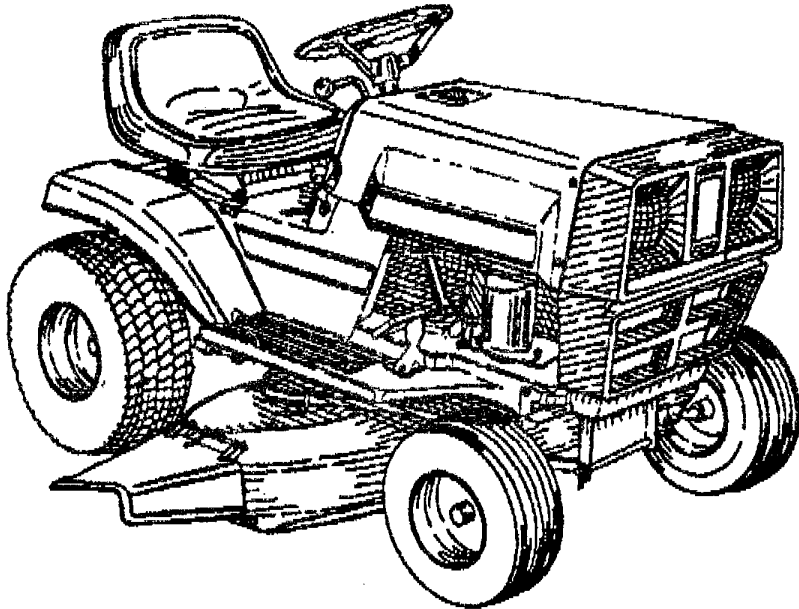


# TRACTEUR TONDEUSE MANUEL PIECES DE RECHANGE



**MODELE C3560-190**

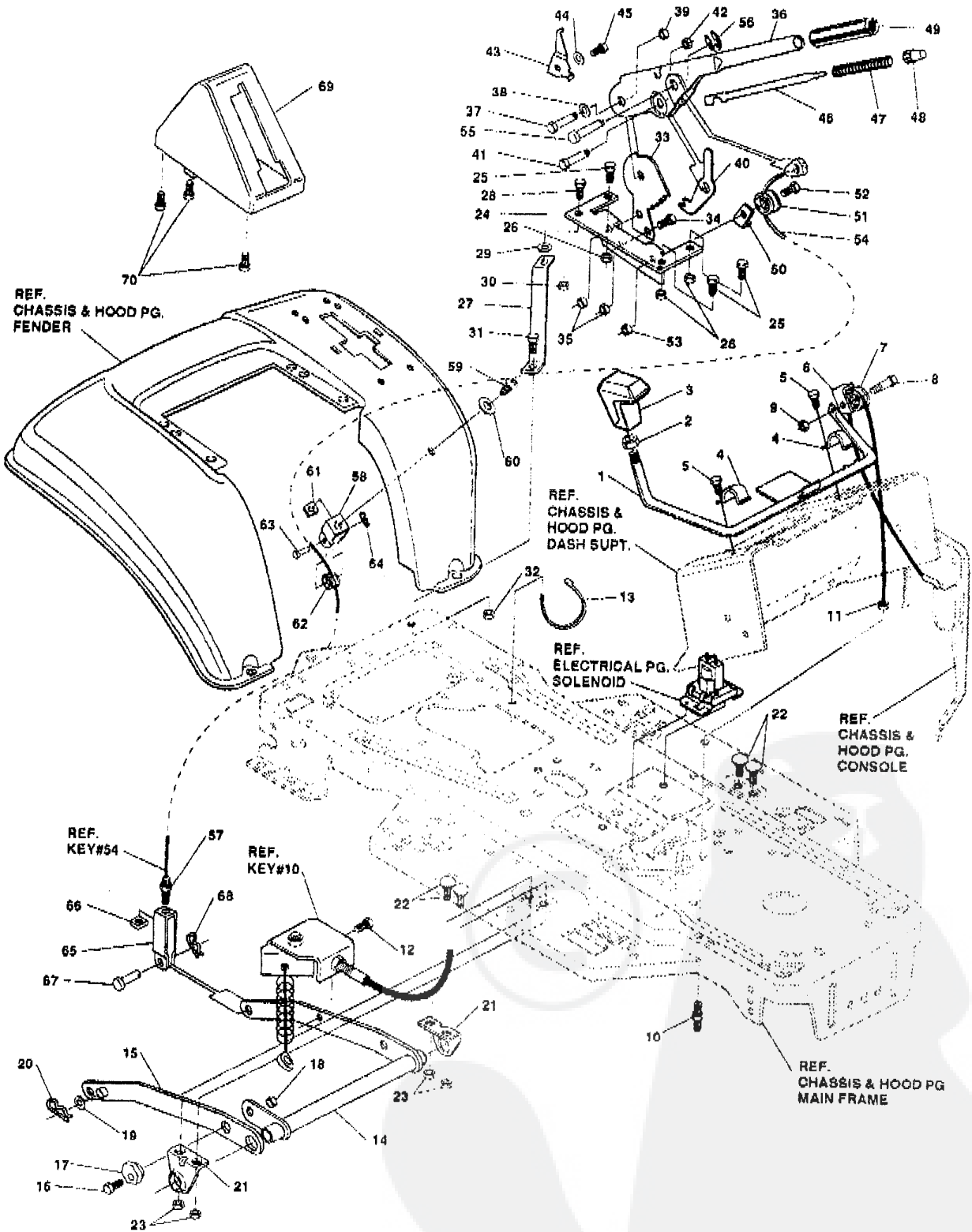


key#	part#	description	qty
1	321708-889	FRAME,LF MAIN P920/F4360	1
2	310005	FOOTPAD,LH	1
3	310006	FOOTPAD,RH	1
4	308235	FASTENER, RATCHET	12
5	9785	BRACKET,GRILLE LH	1
6	9784	BRACKET,GRILLE RH	1
7	56361	BRACKET, FRONT AXLE	1
8	056030	SCREW, 5/16-18X.75WDFLLK	5
9	055273	NUT, 5/16-18 HXWDFLLK	5
10	300440	GUIDE, BELT, RIDER	1
11	01498	NUT, 5/16-18 REGHEXCTRLK	1
12	308207	BOLT, .625X2.180 HSH 1/2-13NC	1
13	0309008	NUT, 1/2-13 REGHCTRLK	1
14	0122207	SCREW, 3/8-16X3.00 HHC	2
15	2483	WASHER, 39IDX1 2SDX.07 BELLVIL	2
16	01499	NUT, 3/8-16 REGHXCTRLK	2
17	300635	GUIDE,SHORT BELT RIDER 15"WH	1
18	0124824	NUT, 5/16-18 HEXJAM	1
19	0271190	NUT, 3/8-16 HEXKEPS	1
20	309660-889	CONSOLE, W/O TOP SHIFT	1
21	46763	RIVET, POP .187DIA X .450	1
22	035497	SCREW, 5/16-18X .50 WAHHTAP	1
23	0995346	SCREW, 1/4-20X .50 WAHHTAP	12
24	9132	SUPPORT, DASH	1
25	0300303	SCREW, .25X.75X.75HHWAPLASTITE	2
26	9197	BRACE, DASH SUPT LOWER	1
27	01502	NUT, 1/4-20 REGHEXCTRLK	1
28	9744	BRKT, GAS TANK	1
29	0995346	SCREW, 1/4-20X .50 WAHHTAP	2
30	9208	BRACE, DASH SUPT UPPER	1
31	095346	SCREW, 1/4-20X .50 WAHHTAP	2
32	305428	DASH,GP W/O GRAPHIC,SUS	1
33	0995346	SCREW, 1/4-20X .50 WAHHTAP	4
34	316868	WASHER,SHOULDER NYLON, 255X.46	4
35	044811	SCREW, 1/4-20X .75 HXWATAP	1
36	01502	NUT, 1/4-20 REGHEXCTRLK	1
37	307058-689	HOOD, PLASTIC	1
38	318197	PAD,ADHESIVE 1.00 X	4
39	303037	GRILL,LWR GPWR	1
40	0300302	SCREW, #10 X .50 HHTAPPST	4
41	310203	CLIP,HOG RING C-SHAPED	1
42	301425	BRACE,HOOD SUPPORT	1
43	0301542	SCREW, 10-24X1.00HWATAPBLKPHOS	4
44	0271166	NUT, #10-24 HEXKEPS	4
45	302333	LENS, SMOKED W/TAB	1
46	301541	FOIL, REFLECTOR LENS H-11 LH	1
47	301540	FOIL, REFLECTOR LENS H-11 RH	1
48	057796	SCREW, #6 X .50 PLASTITE	4
49	56676	BOLT, .375X .580 HSH 5/16-18	2
50	01498	NUT, 5/16-18 REGHEXCTRLK	2
51	57478	SPRING, HOOD LATCH	2
52	301452	FOIL, HEAT REFLECTOR	1
53	58221-889	PLATE, SEAT	1
54	310660-889	BRACKET, F-5 SEAT SUPPORT	1
55	20507	BOLT, .437X .156 HSH 5/16-18	2
56	01498	NUT, 5/16-18 REGHEXCTRLK	2
57	048901	SCREW, 5/16-18X .63 HHC	4
58	01498	NUT, 5/16-18 REGHEXCTRLK	4
59	57153	SPRING,SEAT 2.63LG,1.49OD	2
60	1341	CLAMP,SPRING 1.17"ID	2
61	044811	SCREW, 1/4-20X .75 HXWATAP	2
62	56907	COVER,SEAT SPRING 1.51DX1.0	2
63	308653-889	FENDER F-5 SUS LF FOR SHIFT	1
64	0995346	SCREW, 1/4-20X .50 WAHHTAP	4
65	0122017	SCREW, 5/16-18X1.00 HHC	2
66	0448363	WASHER, FLAT .375X .88X.082	4
67	01498	NUT, 5/16-18 REGHEXCTRLK	2
68	55021	TRIM,STRIP,BLACK	77.5"
69	180079	SCREW,5/16-18X1.00 HHC	2
70	1498	NUT,5/16-18 REGHEXCTRLK	2
71	322810	FRENCH OPERATOR MANUAL (NOT ILLUSTRATED)	1
72	322996	ENGLISH PARTS MANUAL (NOT ILLUSTRATED)	1

◊ Indicates STANDARD HARDWARE ITEMS.

TRACTEUR TONDEUSE 40" MODELE C3560-190

ENSEMBLE SUSPENSION TONDEUSE



UTILISEZ DES PIECES D'ORIGINE POUR CONSERVER L'APPLICATION DE LA GARANTIE.

TOUTES LES PIECES NON REFEREES SONT INTERCHANGEABLES AVEC LEURS OPPOSEES.

315659E

## TRACTEUR TONDEUSE 40" MODELE C3560-190

key#	part#	description	qty
1	303044-853	CLUTCH HANDLE	1
2	0120238	NUT, 1/2-13 HEXJAM	1
3	304438-653	KNOB,SHIFT NOMA 1/2-13	1
4	58307-953	CLIP, RETAINING BRKT	2
5	0995338	SCREW, 1/4-20X .63 WAHHTAP	2
6	52456-953	BRKT,CABLE RETAINER	1
7	39298	PULLEY, .906X.305 NYLON	1
8	57322	BOLT, .375X .375 HSSH 1/4-20	1
9	01502	NUT, 1/4-20 REGHEXCTRLK	1
10	301491	ASSY,CL. CABLE GEN PWR 39SDSUS	1
11	0120613	NUT, 1/4-28 HJAM	1
12	035498	SCREW, 5/16-18X .75 WAHHTAP	1
13	57444	TIE, CABLE BLACK NYLON 5.62	1
14	300158-853	ASSY,REAR LIFT	1
15	300169-853	ASSY,LINK,RIGHT SIDE	1
16	0180079	SCREW, 5/16-18X1.00 HHC	1
17	58247	ADJUSTING NUT	1
18	01498	NUT, 5/16-18 REGHEXCTRLK	1
19	0417098	WASHER, FLAT .531X1.06X.095	2
20	8260	PIN, HAIR .091 DIA X1.66LG	2
21	58248-853	BRKT,REAR,HANG,SUSP.	2
22	126211	BOLT, 5/16-18X .63 CARR	4
23	01498	NUT, 5/16-18 REGHEXCTRLK	4
24	58333	BRACKET,HGT/ADJUST SUPPORT	1
25	180077	SCREW, 5/16-18X .75 HHC	3
26	01498	NUT, 5/16-18 REGHEXCTRLK	3
27	300336-889	BRACE, FENDER F-5 SUS	1
28	0180079	SCREW, 5/16-18X1.00 HHC	1
29	045602	WASHER, FLAT .333X .87X.119	1
30	01498	NUT, 5/16-18 REGHEXCTRLK	1
31	0180079	SCREW, 5/16-18X1.00 HHC	1
32	01498	NUT, 5/16-18 REGHEXCTRLK	1
33	301238	QUADRANT,HEIGHT ADJUST	1
34	0180077	SCREW, 5/16-18X .75 HHC	2
35	01498	NUT, 5/16-18 REGHEXCTRLK	2
36	322292-853	HANDLE,LIFT SHORT	1
37	300171	BOLT, .500X .270 HSSH 5/16-18	1
38	996418	WASHER, FLAT .506X .75X.024	1
39	044108	NUT, 5/16-18 HWDFLCTRLK	1
40	301239	PAWL, HEIGHT ADJUST	1
41	300171	BOLT, .500X .270 HSSH 5/16-18	1
42	044108	NUT, 5/16-18 HWDFLCTRLK	1
43	300782-953	POINTER	1
44	138479	WASHER, EXLK 195X.41X.03	1
45	035287	SCREW, #8-32X .39 HHWATAP	1
46	303027	ROD,ACTUATOR-SHORT	1
47	58326	SPRING, HEIGHT ADJUST	1
48	58325	KNOB, HGT ADJ PUSH BUTTON	1
49	58329	GRIP, .750 OD W/ HOLE	1
50	58335-953	BRKT, CABLE RETAIN	1
51	39298	PULLEY, .906X.305 NYLON	1
52	58336	BOLT, .375X .375 HSSH 1/4-20	1
53	01502	NUT, 1/4-20 REGHEXCTRLK	1
54	300341	CABLE, LIFT 21.70 F-5 20XB-8	1
55	300310	PIN,CLEVIS .310DIA+ .475LG	1
56	300311	RING, RET E .31X.24	1
57	0120375	NUT, 1/4-20 REGHEX	1
58	300298-953	CLEVIS	1
59	0439455	SCREW, 5/16-18X .56PHPNMA BKPH	1
60	301551	WASHER, .344ID X1.50DX.09 CU BPH	1
61	0120373	NUT, 5/16-18 SQ	1
62	39298	PULLEY, .906X.305 NYLON	1
63	300317	PIN, CLEVIS .38 DIA X1.00 LG	1
64	8260	PIN, HAIR .091 DIA X1.66LG	1
65	300703 953	CLEVIS, LIFT CABLE	1
66	0120372	NUT, 1/4-20 REGSO	1
67	39522	PIN, CLEVIS .312 X .812	1
68	121222	PIN, COTTER .090/.086X.75LG	1
69	300335	LIFT COVER-39" F5	1
70	0300340	SCREW, #10 X .75 HHPLAST	3

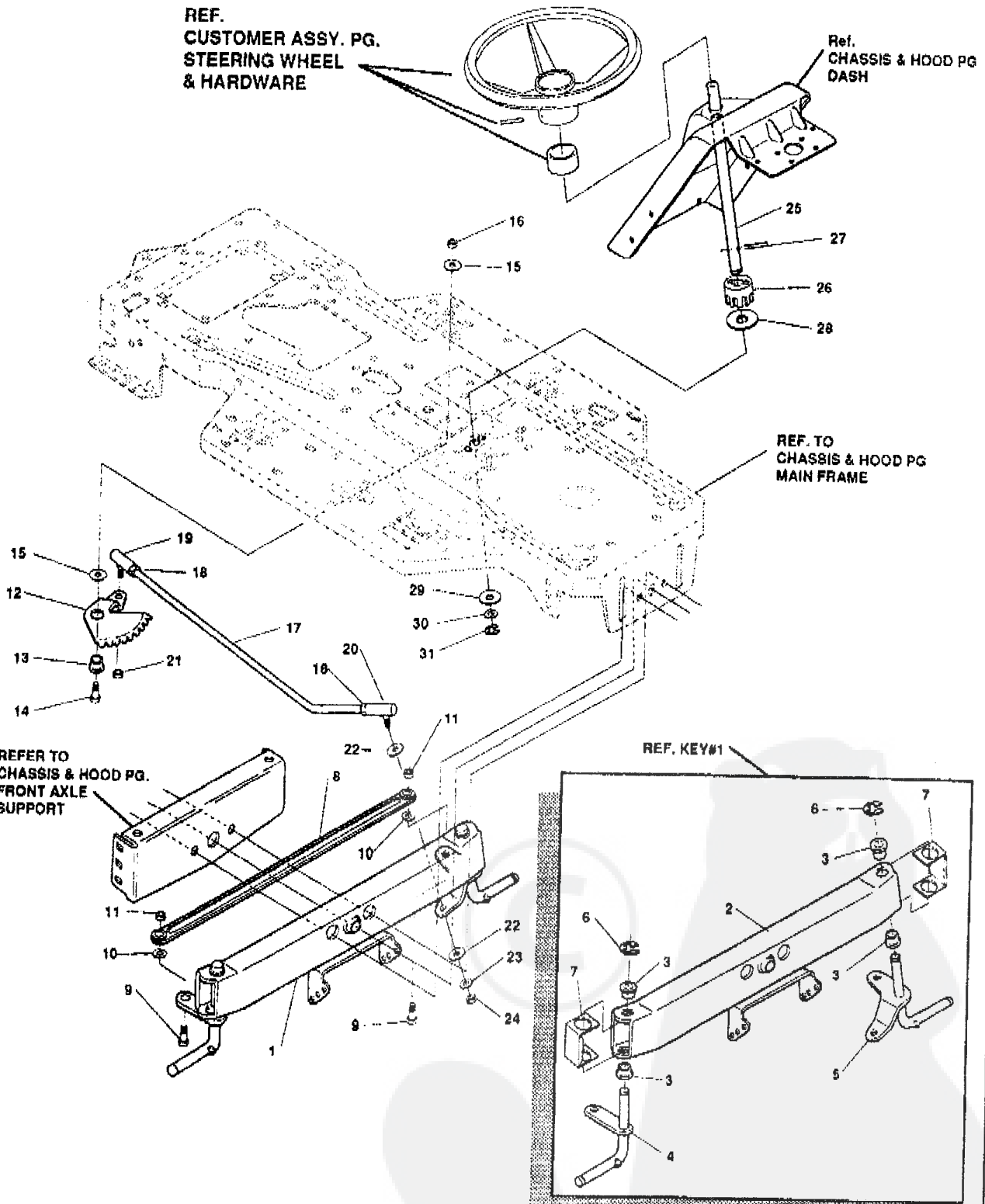
0STANDARD HARDWARE ITEMS

# TRACTEUR TONDEUSE 40" MODELE C3560-190

## ENSEMBLE DIRECTION AVANT

REF. CUSTOMER ASSY. PG. STEERING WHEEL & HARDWARE

Ref. CHASSIS & HOOD PG DASH



REF. TO CHASSIS & HOOD PG MAIN FRAME

REFER TO CHASSIS & HOOD PG. FRONT AXLE SUPPORT

REF. KEY#1

UTILISEZ DES PIECES D'ORIGINE POUR CONSERVER L'APPLICATION DE LA GARANTIE.

TOUTES LES PIECES NON REFEREES SONT INTERCHANGEABLES AVEC LEURS OPPOSEES.

317129A

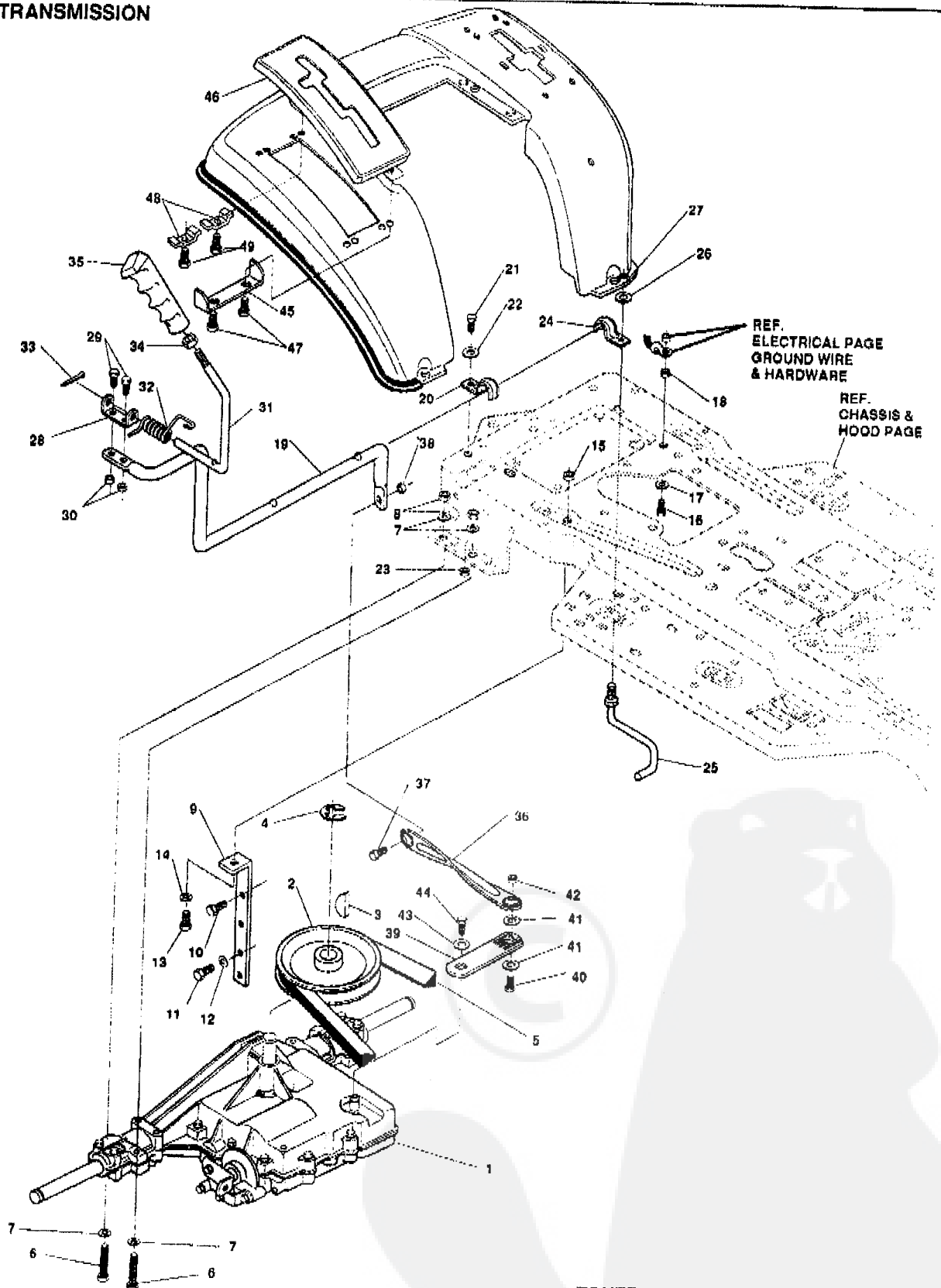
## TRACTEUR TONDEUSE 40" MODELE C3560-190

key#	part#	description	qty
1	*	AXLE.FRONT ASSY SUS LF	1
2	300272	ASSY FRONT AXLE SUSPENDED	1
3	52407	SPINDLE BEARING	4
4	9180	ASSY,SPINDLE,RH	1
5	314088	ASSY,SPINDLE,LH	1
6	36625	RING, RETEX .57X.05TRU5133-75	2
7	53373	AXLE COVER	2
8	304590	TIE ROD ASSY 19.81LG	1
9	0180128	SCREW, 3/8-16X1.75 HHC	2
10	120382	WASHER, REGSPTLK.393X.68X.10	2
11	01499	NUT, 3/8-16 REGHXCTRLK	2
12	58289	SECTOR, STEERING LF	1
13	52408	BRNG,FL ECC.510IDX .998ODX .56	1
14	180177	SCREW, 1/2-13X1.50 HHC	1
15	22265	WASHER, FLAT .515X1.38X.119PL	2
16	01500	NUT, 1/2-13 REGHCTRLK	1
17	58291	STEERING LINK	1
18	0124925	NUT, 3/8-24 REGHEXJAM	2
19	57158	BALL JOINT 3/8 THD SHORT STUD	1
20	21275	BALL JOINT 3/8 THD LONG STUD	1
21	046692	NUT, 3/8 24 WDFLHLK WHIZ	1
22	0120396	WASHER, FLAT .531X1.06X.095	2
23	0120382	WASHER, REGSPTLK.393X.68X.10	1
24	0120369	NUT, 3/8-24 REGHEX	1
25	58243	SHAFT, STEERING LF	1
26	58244	PINION, STEERING LF	1
27	58274	PIN,DOWEL .2800 OD+1.75LG	1
28	301410	BRNG, FL .752IDX1.061ODX .24	1
29	301398	WASHER, FORMED1.135X1.53X.12	1
30	021682	WASHER, FLAT .765X1.25X.042	1
31	36625	RING, RETEX .57X.05TRU5133-75	1

\* Order Individual Parts

0 Indicates STANDARD HARDWARE ITEMS.

## TRANSMISSION



UTILISEZ DES PIÈCES D'ORIGINE POUR CONSERVER L'APPLICATION DE LA GARANTIE.

TOUTES LES PIÈCES NON  
REFERÉES SONT  
INTERCHANGEABLES AVEC  
LEURS OPPOSÉES.

319548C

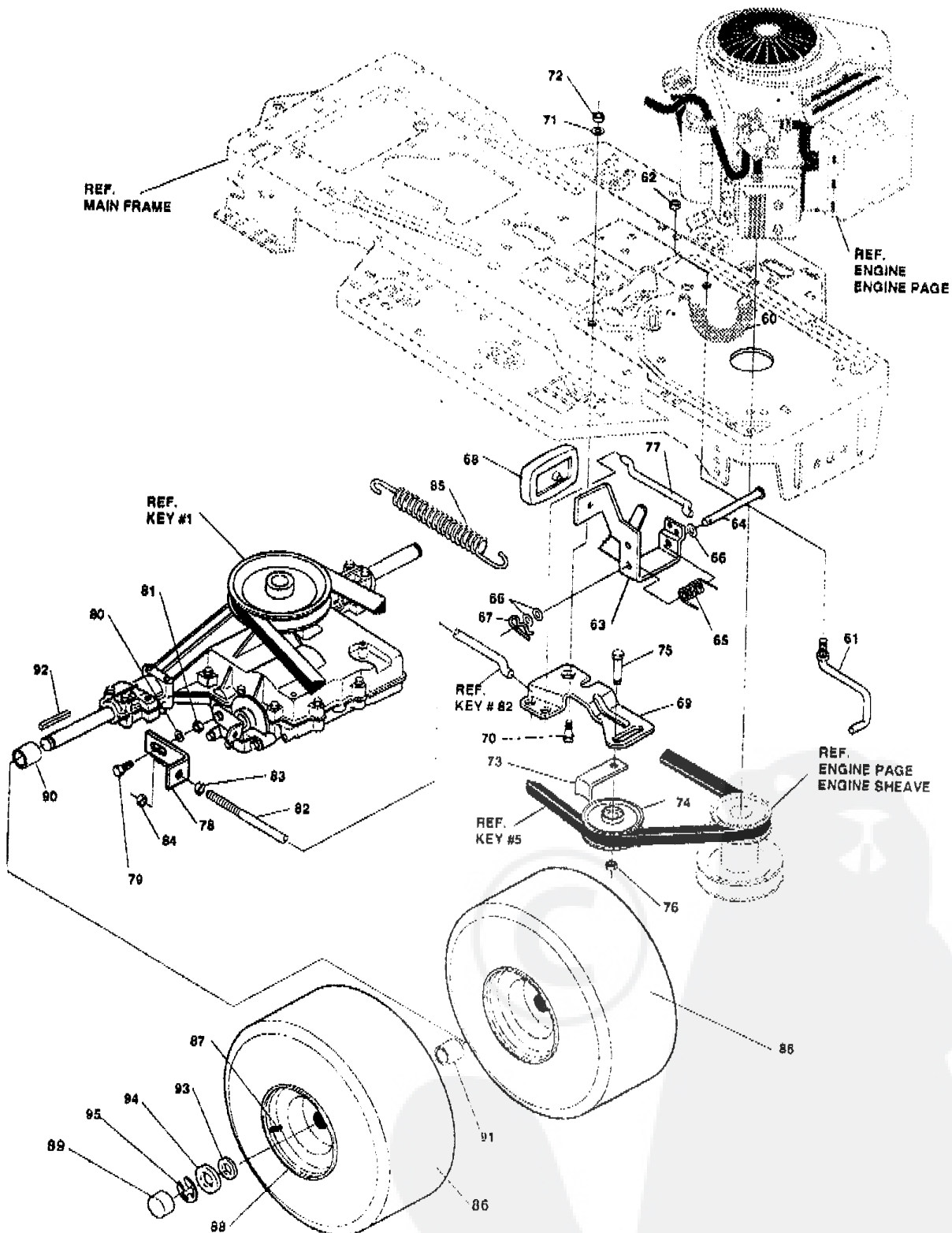


key#	part#	description	qty
1		TRANSAXLE FOOTE 4960-6SPHD (SEE NOTE)	1
2	302745	PULLEY V 4L 6.60 OD	1
3	3021	KEY, WDRF 606 .750X.187X.312	1
4	22053	RING, RETEX .58X.04TRU5100-62	1
5	314120	BELT, V 4L 87.25 4WS LF	1
6	180112	SCREW, 5/16-18X2.75 HHC	4
7	0120393	WASHER, FLAT .344X .69X.065	8
8	01498	NUT, 5/16-18 REGHEXCTRLK	4
9	323471	BRACKET,STABILIZER	1
10	050947	SCREW, 3/8-16X1.25 WAHHTAP	1
11	035498	SCREW, 5/16-18X .75 WAHHTAP	1
12	120638	WASHER, HVSPTLK .328X.60X.09	1
13	0122017	SCREW, 5/16-18X1.00 HHC	1
14	0120393	WASHER, FLAT .344X .69X.065	1
15	01498	NUT, 5/16-18 REGHEXCTRLK	1
16	0122007	SCREW, 5/16-18X .75 HHC	1
17	138538	WASHER, REGINTLK.320X.61X.03	1
18	01498	NUT, 5/16-18 REGHEXCTRLK	1
19	319111	LEVER,SHIFT,LWR 4360 LF	1
20	310347-853	CLIP-SHIFT LEVER .62 ROD	1
21	0180077	SCREW, 5/16-18X .75 HHC	1
22	996416	WASHER, FLAT .391X1.00X.125	1
23	01498	NUT, 5/16-18 REGHEXCTRLK	1
24	310347-853	CLIP-SHIFT LEVER .62 ROD	1
25	57259	GUIDE, BELT 5/16-18THD	1
26	996416	WASHER, FLAT .391X1.00X.125	1
27	01498	NUT, 5/16-18 REGHEXCTRLK	1
28	310213-953	BRACKET,PIVOT SHIFT LEVER	1
29	0180018	SCREW, 1/4-20X .62 HHC	2
30	01502	NUT, 1/4-20 REGHEXCTRLK	2
31	309635	LEVER, SHIFT UPPER SF 1/2-13TH	1
32	310265	SPRING, TORS .56X.95X.095	1
33	137185	PIN, COTTER .125 DIA X1.00LG	1
34	0120238	NUT, 1/2-13 HEXJAM	1
35	306690	HANDLE 1/2-13	1
36	314971	LINK TIE ROD SHIFTER 7.746C/L	1
37	0180124	SCREW, 3/8-16X1.25 HHC	1
38	01499	NUT, 3/8-16 REGHXCTRLK	1
39	310758-955	BRACKET,SHIFT 5SP SF FEN HT	1
40	0180124	SCREW, 3/8-16X1.25 HHC	1
41	120394	WASHER, FLAT .406X .81X.065	2
42	01499	NUT, 3/8-16 REGHXCTRLK	1
43	57157	WASHER, .750X.250 SP-TRANSAXLE	1
44	056255	SCREW, 1/4-28X .75 NYLHHC	1
45	311257-853	BRACKET COVER	1
46	311209	COVER PLASTIC	1
47	311331	SCREW,1/4-15X.44/.53 HILOHHWA	2
48	300284-953	CLAMP SPRING	2
49	311331	SCREW,1/4-15X.44/.53 HILOHHWA	2

◊ Indicates STANDARD HARDWARE ITEMS.

NOTE: CONTACT YOUR NEAREST FOOTE TRANSAXLE DEALER FOR PARTS AND SERVICE.

# TRANSMISSION



UTILISEZ DES PIÈCES D'ORIGINE POUR CONSERVER L'APPLICATION DE LA GARANTIE.

TOUTES LES PIÈCES NON REFERÉES SONT INTERCHANGEABLES AVEC LEURS OPPOSÉS.

319948C

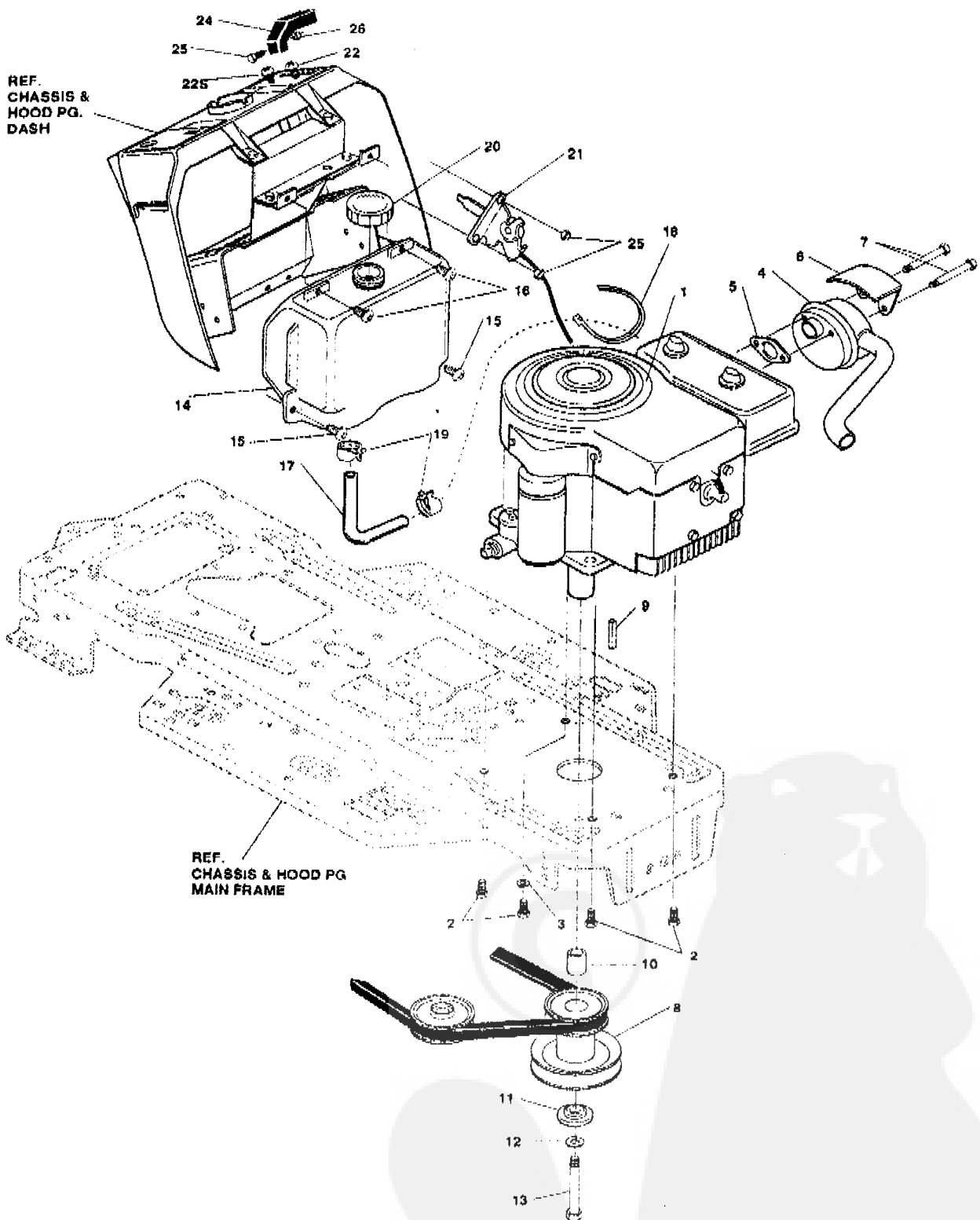
## IHACTEUR TONDEUSE 40" MODELE C3560-190

key#	part#	description	qty
60	321514	SPRING BIAS DRAGLINK	1
61	304016	GUIDE BELT	1
62	1498	NUT, 5/16-18 REGHEXCTRLK	1
63	300308	PEDAL ASSY, BRAKE/CLUTCH LF	1
64	319675	PIN CLEVIS	1
65	57847	SPRING, BRAKE PEDAL	1
66	2968	WASHER, FLAT .504X .75X.059	3
67	56180	PIN, HAIR	1
68	48160	PAD, CLUTCH BRAKE W/PRINTING	1
69	300154	ARM, IDLER TRACTION DR. LF	1
70	300793	BOLT, .625X .135 HSH 5/16-18	1
71	45602	WASHER, FLAT .333X .87X.119	1
72	01498	NUT, 5/16-18 REGHEXCTRLK	1
73	39659	RETAINER, BELT	1
74	35374	PULLEY, IDLER V4L 3.06X .62	1
75	45892	BOLT, 3/8-16X1.50 CARR	1
76	01499	NUT, 3/8-16 REGHXCTRLK	1
77	57204	ROD, CLUTCH	1
78	57217	BRACKET, BRAKE ROD	1
79	20507	BOLT, .437X .156 HSH 5/16-18	1
80	45602	WASHER, FLAT .333X .87X.119	1
81	01498	NUT, 5/16-18 REGHEXCTRLK	1
82	313659	ROD, BRAKE P920 4WS LF 23.50	1
83	0271184	NUT, 5/16-18 HEXKEPS	1
84	01498	NUT, 5/16-18 REGHEXCTRLK	1
85	56359	SPRING, CLUTCH .113X.750X0.75	1
86	58276	TIRE, 20X10-8TURF	2
87	24167	VALVE STEM	1
88	301366	RIM, WHEEL 20X8.00	1
89	40394	CAP, 1.500ID X 7/8 LG HUB	2
90	57479	SPACER, .75 X 1.25 X 1.32	2
91	301565	SPACER, SLVE .75IDX1.25OD X.5TK	2
92	52928	KEY, SQUARE .187SQX2.25LG	2
93	0642	WASHER, FLAT .755X1.31X.075	4
94	042815	WASHER, FLAT .755X1.53X.07	2
95	36625	RING, RETEX .57X.05TRU5133-75	2

◊ Indicates STANDARD HARDWARE ITEMS.

## TRACTEUR TONDEUSE 40" MODELE C3560-190

## MOTEUR ENSEMBLE



UTILISEZ DES PIÈCES D'ORIGINE POUR CONSERVER L'APPLICATION DE LA GARANTIE.

TOUTES LES PIÈCES NON  
REFÉREES SONT  
INTERCHANGEABLES AVEC  
LEURS OPPOSÉES.

322768A

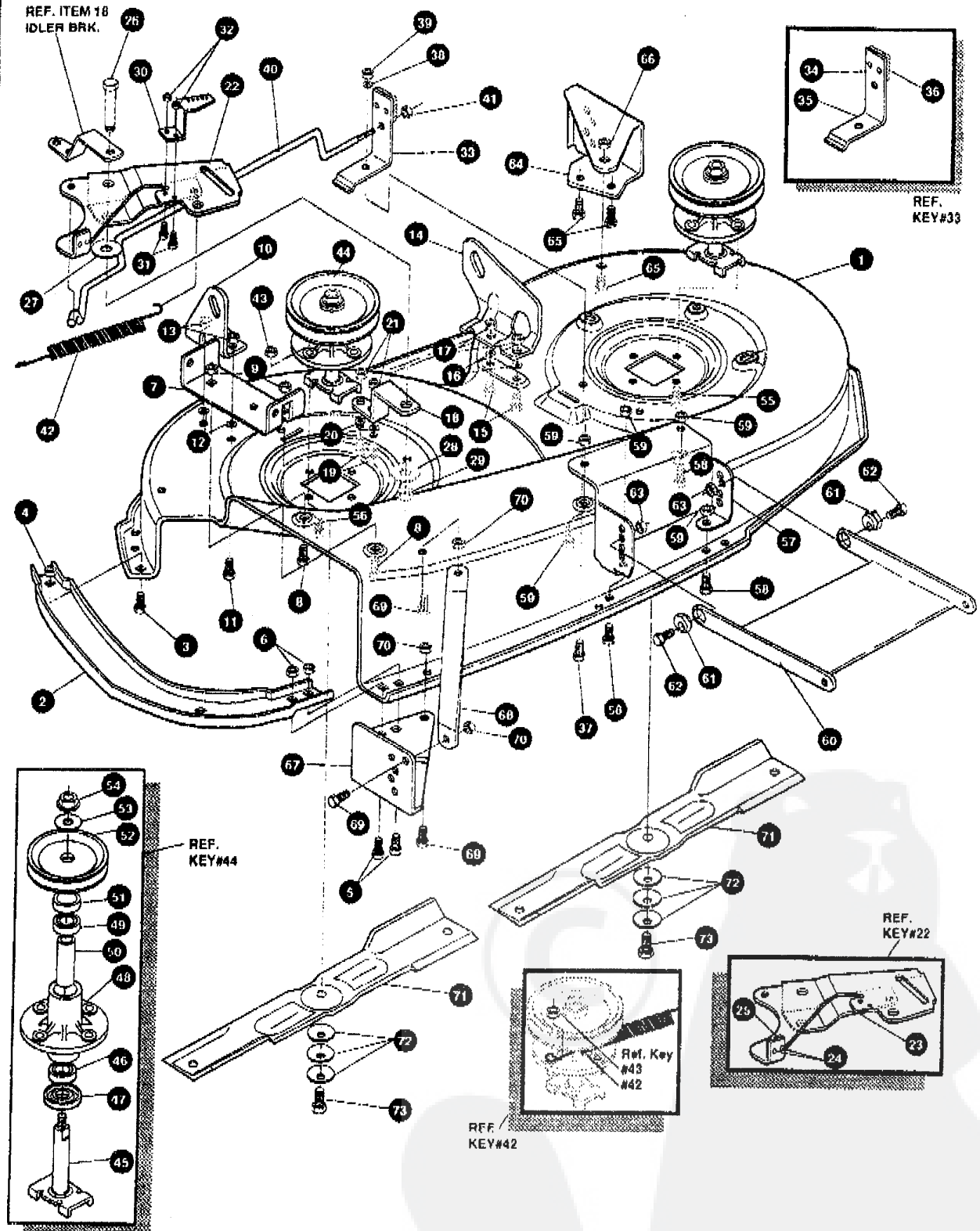
## TRACTEUR TONDEUSE 40" MODELE C3560-190

key#	part#	description	qty.
1	ENGINE	12 HP B&S 1/2 ECONO (SEE ENGINE MANUAL)	1
2	50947	SCREW, 3/8-16X1.25 WAHTAP	4
3	138489	WASHER, EXLK 384X.69X.04	1
4	305367	MUFFLER-LO TONE NELSON EXPORT	1
5	46708	GASKET MUFFLER	1
6	54767	SHIELD, HEAT, FOR ROUND MUFFLER	1
7	173069	SCREW, 5/16-18X3.50 HHC	2
8	310250	PULLEY ENG. V3L 4.00 OFFSET	1
9	303161	KEY, SQUARE 250SQX5.00LG	1
10	304246	SPACER, 1.01X1.484 ENGIN PULLEY	1
11	56431	WASHER, .980IDX1.38ODX.437PILOT	1
12	120383	WASHER, REGSPTLK.459X.78X.12	1
13	433146	SCREW, 7/16-20X4.25 HHC	1
14	314991	TANK, FUEL 2. GAL	1
16	300303	SCREW, .25X.75X.75HHWAPLASTITE	2
16	995346	SCREW, 1/4-20X .50 WAHTAP	2
17	47452	GAS LINE .25ID	14"
18	67444	WIRE TIE	1
19	48672	CLAMP, FUEL LINE	2
20	300304	CAP, FUEL - 2.0 THROAT	1
21	303159	THROTTLE, CONTROL	1
22	320569	SCREW, 10-24X .63PHPNMA	2
23	271166	NUT, #10-24 HEXKEPS	2
24	300508	KNOB, THROTTLE CONTROL HANDGRIP	1
25	159595	SCREW, #8-32X .38 PHPNMA	1
26	120622	NUT, #8-32 REGHX	1

• STANDARD HARDWARE ITEMS.

MACHETE TORNEUSE 75 MODELE 00000190

### CARTER DE TONDEUSE



UTILISEZ DES PIECES D'ORIGINE POUR CONSERVER L'APPLICATION DE LA GARANTIE.

TOUTES LES PIECES NON REFEREES SONT INTERCHANGEABLES AVEC LEURS OPPOSEES.

316185E

## TRACTEUR TONDEUSE 40" MODELE C3560-190

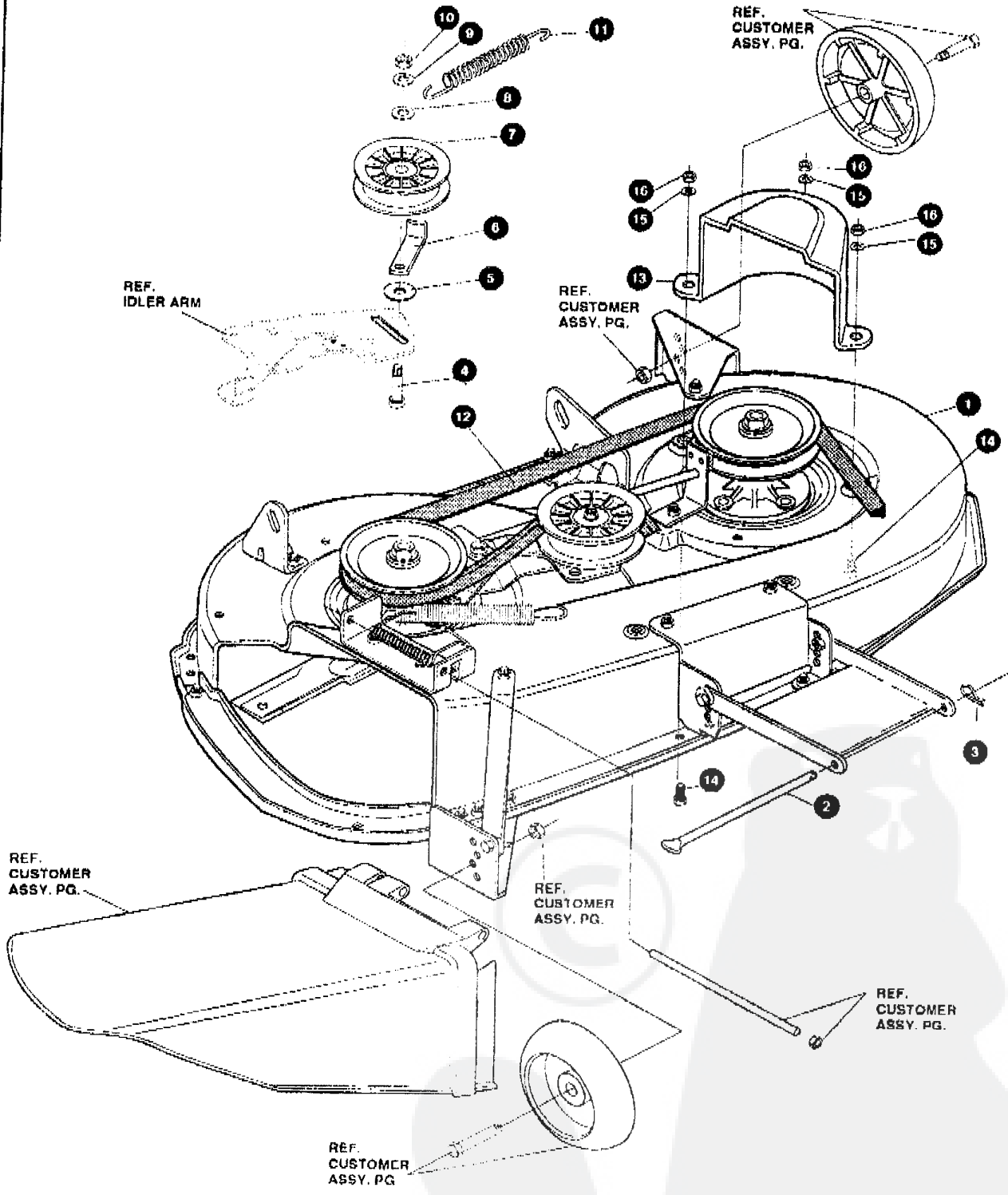
key#	part#	description	qty
1.	318345-853	MOWER DECKS, RIDER 40"	1
2.	304102	TOE GUARD	1
3.	180075	SCREW, 5/16-18X .63 HHC	1
4.	1498	NUT, 5/16-18 REGHEXCTRLK	1
5.	122007	SCREW, 5/16-18X .75 HHC	1
6.	1498	NUT, 5/16-18 REGHEXCTRLK	2
7.	302364	BRACKET CHUTE MOUNT	1
8.	180075	SCREW, 5/16-18X .63 HHC	1
9.	1498	NUT, 5/16-18 REGHEXCTRLK	2
10.	58250	BRACKET, RH LIFT REAR	1
11.	180077	SCREW, 5/16-18X .75 HHC	1
12.	120393	WASHER, FLAT .344X .69X.065	2
13.	1498	NUT, 5/16-18 REGHEXCTRLK	2
14.	58251	BRACKET, LH LIFT REAR	1
15.	180077	SCREW, 5/16-18X .75 HHC	1
16.	120393	WASHER, FLAT .344X .69X.065	2
17.	1498	NUT, 5/16-18 REGHEXCTRLK	2
18.	302363	BRACE IDLER	1
19.	180077	SCREW, 5/16-18X .75 HHC	2
20.	120393	WASHER, FLAT .344X .69X.065	2
21.	44109	NUT, 5/16-18 HWDFLCTRLK	2
22.	320576	IDLER ARM ASSEMBLY	1
23.	322116	ARM IDLER 40"DECK EURO	1
24.	41601	RIVET, OVSET .187DIA X .50	2
25.	306973	BRAKE PAD - HARD	1
26.	304420	BOLT, .500X2.15 HXHD CPH	1
27.	996307	WASHER, FLAT .391X1.00X.209	1
28.	996416	WASHER, FLAT .391X1.00X.125	2
29.	45171	NUT, 3/8-16 HWDFL WHIZ-LOCK	1
30.	300700	BRACKET, EXTENSION IDLER	1
31.	120228	SCREW, 5/16-18 X .63 HHC	2
32.	1498	NUT, 5/16-18 REGHEXCTRLK	2
33.	321828	BLADE BRAKE ASSY.	1
34.	135624	RIVET, TRSET .185DIA X .41LG	2
35.	304119	BRAKE ARM	1
36.	306973	BRAKE PAD	1
37.	120228	SCREW, 5/16-18X .63 HHC	1
38.	120393	WASHER, FLAT .344X .69X.065	1
39.	1498	NUT, 5/16-18 REGHEXCTRLK	1
40.	302714	ROD, BRAKE	1
41.	1502	NUT, 1/4-20 REGHEXCTRLK	1
42.	35410	SPRING .071 X .62 X 4.37	1
43.	1498	NUT, 5/16-18 REGHEXCTRLK	1
44.	56424	QUILL ASSY, 36/39/40/43	1
45.	56425	SHAFT/SADDLE 36"	2
46.	49562	BRNG, BALL .669IDX1.575ODX.472	1
47.	50616	DUST SHIELD	1
48.	55547	QUILL CASTING (1046)	1
49.	49562	BRNG, BALL .669IDX1.575ODX.472	1
50.	50818	SPACER, SLEV .669X .88X3.797	1
51.	51449	SPACER, SLEV .672X .93X .438PM	1
52.	56390	PULLEY, 26/36" QUILL	1
53.	56365	WASHER, SPECIAL QUILL	1
54.	1282	NUT, 7/16-20 WDFLLK	1
55.	50634	SCREW, 5/16-18X .88 WAHHTAP	7
56.	300345	SCREW, 5/16-18X1.38 WATAP	1
57.	318445	BRACKET, 40 LF FRONT DECK	1
58.	180075	SCREW, 5/16-18X .63 HHC	4
59.	1498	NUT, 5/16-18 REGHEXCTRLK	4
60.	58305	BRACKET, LINK DECK FRONT	1
61.	58247	ADJUSTING NUT	2
62.	122017	SCREW, 5/16-18X1.00 HHC	2
63.	1498	NUT, 5/16-18 REGHEXCTRLK	2
64.	304426	BRACKET, GAGE WHEEL L.H.	1
65.	180075	SCREW, 5/16-18X .63 HHC	3
66.	1498	NUT, 5/16-18 REGHEXCTRLK	3
67.	313925	BRACKET, GAGE WHEEL R.H. FRNT	1
68.	314282	BRACKET, STABILIZER	1
69.	180075	SCREW, 5/16-18X .63 HHC	3
70.	1498	NUT, 5/16-18 REGHEXCTRLK	3
71.	305012	BLADE, 40" STD. LIFT 20 324	2
72.	2483	WASHER, 39IDX1.26DX 07 BELLVIL	6
73.	39573	SCREW, 3/8-24X1.00 NYLHHC	2

\* Indicates STANDARD HARDWARE ITEMS

# TRACTEUR TONDEUSE 40" MODELE C3560-190

## CARTER DE TONDEUSE

SEE DWG. 318345 FOR PARTS ASSY. OF PAINTED DECK



UTILISEZ DES PIECES D'ORIGINE POUR CONSERVER L'APPLICATION DE LA GARANTIE.

TOUTES LES PIECES NON REFEREES SONT INTERCHANGEABLES AVEC LEURS OPPOSEES.

320106A



## TRACTEUR TONDEUSE 40" MODELE C3560-190

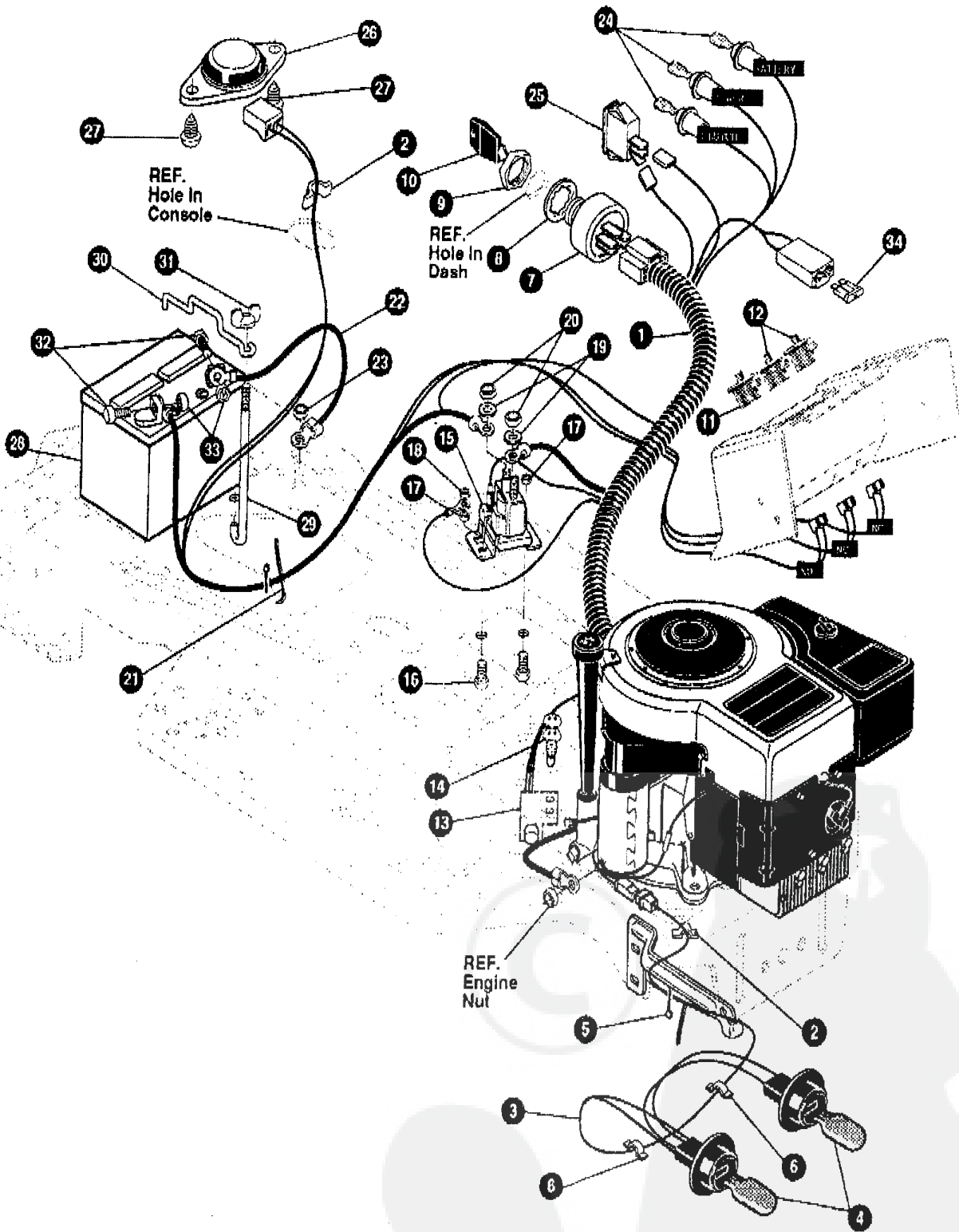
key#	part#	description	qty
1.	*	DECK 40" MOWER 2-WH EXPORT ASSEMBLY	1
2.	58306	ROD, DECK HITCH	1
3.	8260	PIN, HAIR 091 DIA X1.66LG	1
4.	57325	BOLT, 3/8-16X2.00 CARR	1
5.	25210	WASHER, FLAT .392X1.25X.09	1
6.	300844 953	RETAINER,BELT	1
7.	310326	PULLEY, IDLER B&F 4.00 WIDE FL	1
8.	996307	WASHER, FLAT .391X1.00X.209	1
9.	120362	WASHER, REGSPTLK 393X.68X.10	1
10.	• 120377	NUT, 3/8-16 REGHX	1
11.	314107	SPRING,TENSION 5.00LG+17LB/IN	1
12.	319005	BELT, V 5L 81.00 DECK 40 LF	1
13.	302833	GUARD, BELT LH PLASTIC	1
14.	• 120228	SCREW, 5/16-18X .63 HHC	3
15.	120393	WASHER, FLAT .344X .69X.065	3
16.	• 1498	NUT, 5/16-18 REGHEXCTRK	3

\* ORDER INDIVIDUAL PARTS.

• Indicates STANDARD HARDWARE ITEMS



FAISCEAU ELECTRIQUE



UTILISEZ DES PIECES D'ORIGINE POUR CONSERVER L'APPLICATION DE LA GARANTIE.

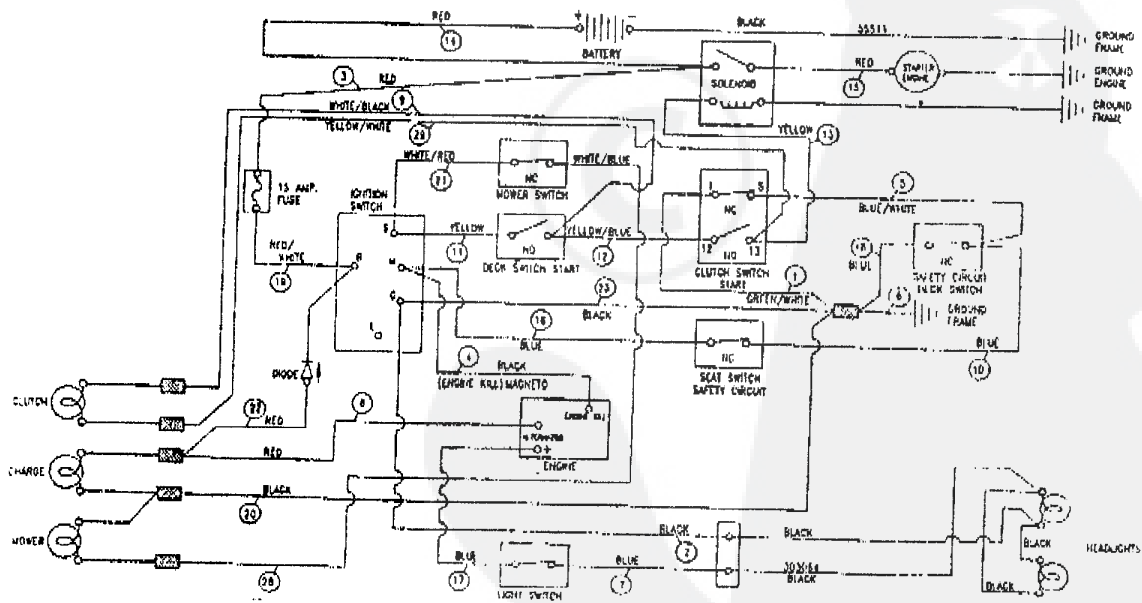
TOUTES LES PIECES NON REFEREES SONT INTERCHANGEABLES AVEC LEURS OPPOSEES.

322767A

key#	part#	description	qty.
1.	320067	HARNESS 12-12 5,H11G14.WRAP,LF	1
2.	41482	PRESS CLIP,1.380LG 25SID	2
3.	303064	ASSY.LIGHT WIRE-1/4 TURN	1
4.	52572	BULB, HEADLAMP	2
5.	57444	TIE, CABLE BLACK NYLON 5.62L	1
6.	41482	PRESS CLIP,1.380LG 25SID	1
7.	305720	SWITCH-IGN.(AFTER FIRE) 3 POSN	2
8.	300193	NUT, 5/8-32 ACC #125 PLAST BLK	1
9.	300194	BOOT, IGN SWITCH	1
10.	300626	KEY, IGNITION SWITCH	1
11.	300220	SWITCH,SNAPMNT NO .055/116BLK	1
12.	58277	SWITCH,SNAPMNT NC .055/166 GR	1
13.	57476	SWITCH,SCR MNT DP NC NO BLK	2
14.	57220	SCREW, #12 X .50 PHPNHTAP BLK	1
15.	53716	SOLENOID	2
16.	187745	SCREW, 1/4-20X .75 HXSEMMA	1
17.	1502	NUT, 1/4-20 REGHEXCTRLK	2
18.	271172	NUT, 1/4-20 REGHEXKEPS	2
19.	138485	WASHER, EXLK .320X.61X.03	1
20.	120368	NUT, 5/16-24 REGHEX	2
21.	57444	TIE, CABLE BLACK NYLON 5.62L	2
22.	55511	WIRE, GROUND, 12.5"	1
23.	271184	NUT, 5/16-18 HEXKEPS	1
24.	57769	BULB, INDICATOR	1
25.	300334	LIGHT SWITCH ON/OFF PANEL MNT	3
26.	67547	SWITCH, SEAT	1
27.	160505	SCREW, 1/4-20X 38PHPNHMAGR2	1
28.	302257	BATTERY 12V 7 PLATE	2
29.	57551	ROD, BATTERY	1
30.	57552	ROD, BATTERY, TOP	1
31.	310067	NUT, WING 1/4-20 SMALL PLASTIC	1
32.	120854	SCREW, 1/4-20X .63 HMC GR2	1
33.	271172	NUT, 1/4-20 REGHEXKEPS	2
34.	302031	FUSE, 15 AMP SPADE TYPE	1

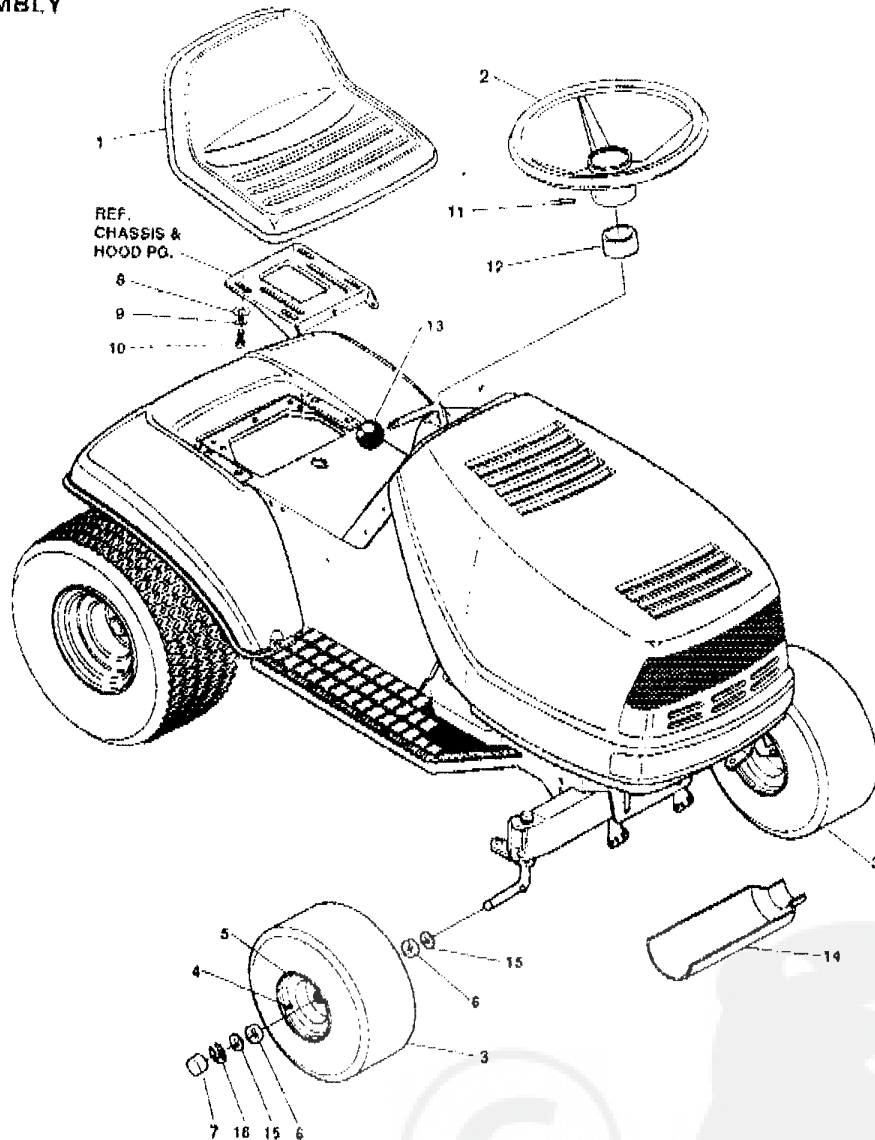
• Indicates STANDARD HARDWARE ITEMS.  
 •• SPADE TYPE FUSES ARE INCLUDED WITH THE WIRE HARNESS.

**SCHEMATIC DRAWING:**



**TRACTEUR TONDEUSE 40" MODELE C3560-190**

**CUSTOMER ASSEMBLY**



**CUSTOMER ASSEMBLY VIEW**

317690 PARTS BAG ASSY QTY1

key#	part#	description	qty
1	57454	SEAT,450 MICH.	1
2	301251	WHEEL, STEERING, 13"	1
3	39830	TIRE 5X6 0X6 TURF	2
4	24167	VALVE STEM	1
5	39829	WHEEL W/BRG.	1
6	39979	BEARING,FL1 38OD, 753ID PM	2
7	40394	HUB CAP, 1.500ID X 7/8 LG	2
8	120393	WASHER, FLAT 344X 69X 065	4
9	120638	WASHER, HVSP TLK 328X 60X 09	4
10	122007	SCREW, 5/16-18X .75 HHC	4
11	456378	PIN, SPRING .250DIA X 2.00LG HVPL	1
12	57212	COVER, STEERING SHAFT	1
13	54873	TROUGH, OIL DRAIN	1
14	642	WASHER FLAT 755X1 31X 075	4
15	36625	RING, RETEX 57X 05TRU5133 75	2

317690A