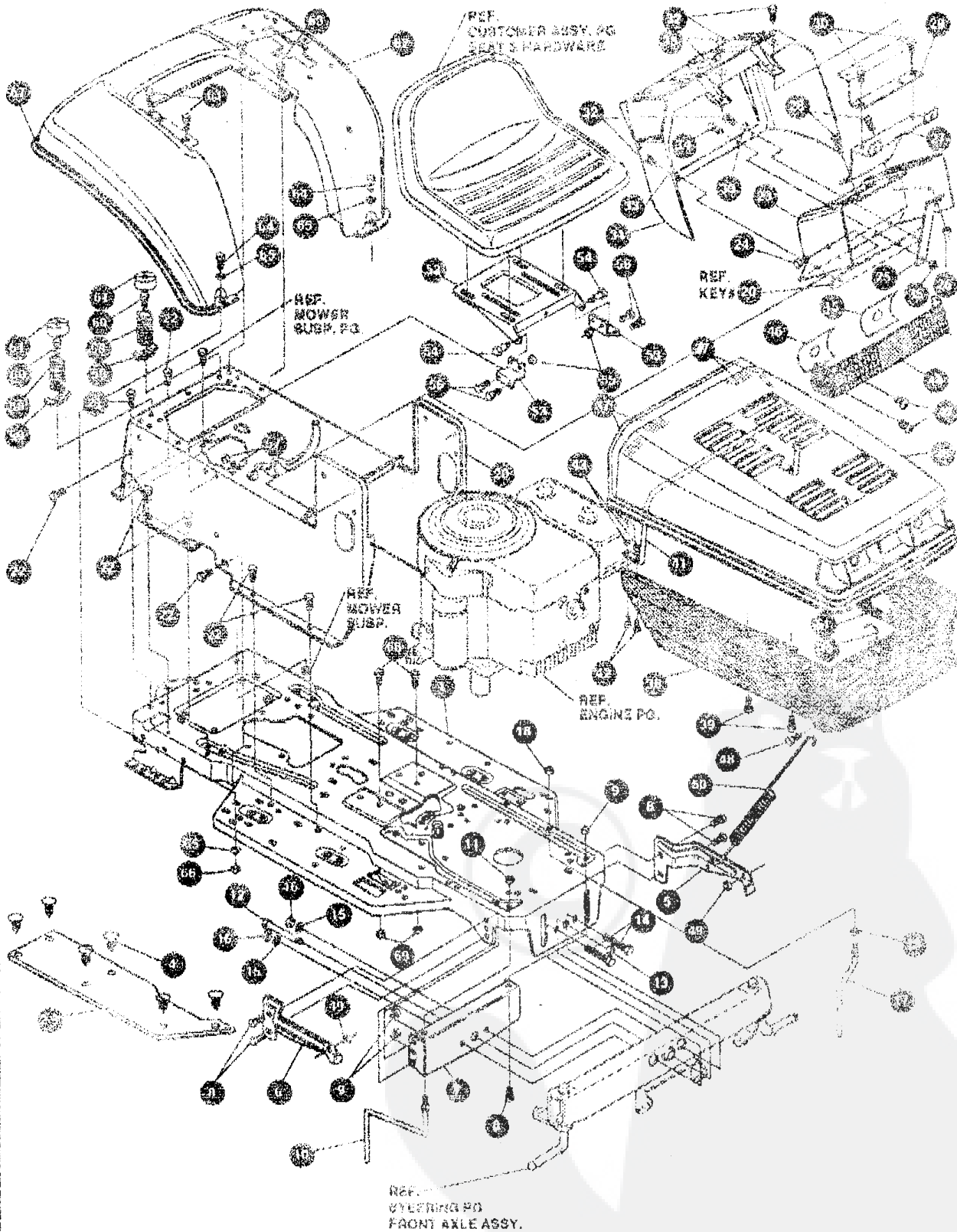


LAWN TRACTOR MODEL C336D-520

CHASSIS & HOOD ASSEMBLY



NOTE: ALWAYS USE ORIGINAL EQUIPMENT PARTS. Use of service/replacement parts other than original equipment parts may void your warranty.

ALL UNNUMBERED ITEMS ARE INTERCHANGABLE WITH OPPOSITE SIDE

5223-00A

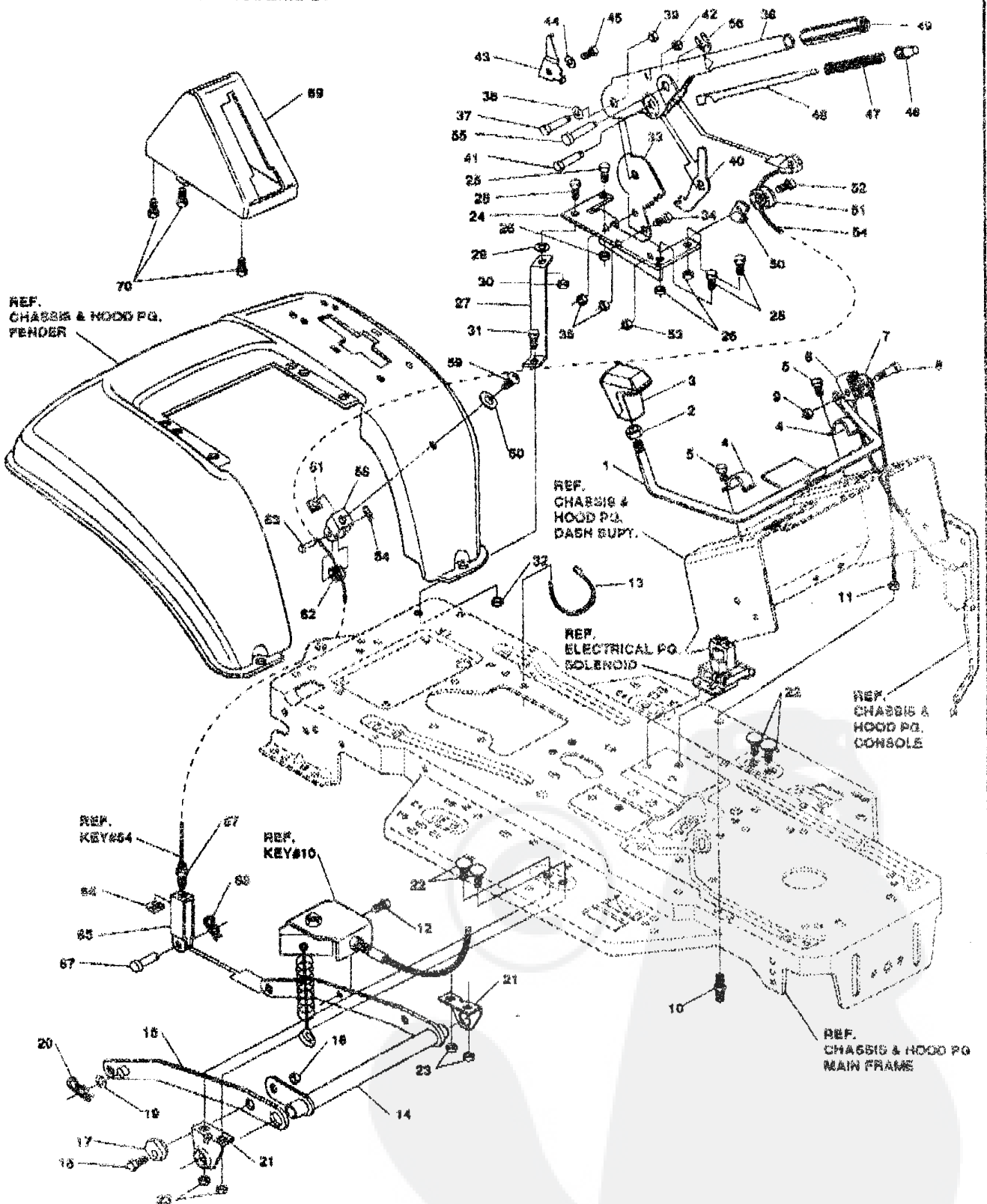
32" LAWN TRACTOR MODEL C3560-520

Keys	Part#	Description	Qty.
1	321708-860	FRAME	1
2	310005	FOOTPAD,LH	1
3	310006	FOOTPAD,RH	1
4	309235	FASTENER, RATCHET	12
5	302915-853	BRACKET,GRILLE LH	1
6	302914-853	BRACKET,GRILLE RH	1
7	313541-853	BRACKET, FRONT AXLE	1
8	* 56030	SCREW, 5/16-18X.75 WDFLLK	6
9	* 56273	NUT, 5/16-18 HXWDFLLK	6
10	300440	GUIDE, BELT, RIDER	1
11	* 1498	NUT, 5/16-18 REGHEXCTRLK	1
12	308207	BOLT, .625X2.180 HSSH 1/2-13	1
13	* 308008	NUT, 1/2-13 REGHOTRLK	1
14	* 122207	SCREW, 3/8-16X3.00 HHC	2
15	2483	WASHER, 3/16X1.25DX.07 BELLVIL	2
16	* 1498	NUT, 3/8-16 REGHXCTRLK	2
17	300635	GUIDE,SHORT BELT RIDER 15"WH	1
18	* 124624	NUT, 5/16-18 HEXJAM	1
19	* 271190	NUT, 3/8-16 HEXKEPS	1
20	309661-860	CONSOLE GMPR W TOP SHIFT	1
21	* 32497	SCREW, 5/16-18X .50 WAHHTAP	1
22	* 995346	SCREW, 1/4-20X .50 WAHHTAP	13
23	58312-863	SUPPORT, DASH	1
24	* 800303	SCREW, .25X.75X.75HHWAPLASTITE	2
25	300201-853	BRACE, DASH SUPT LOWER	1
26	* 1502	NUT, 1/4-20 REGHEXCTRLK	1
27	302530-853	BRKT, GAS TANK	1
28	* 995346	SCREW, 1/4-20X .50 WAHHTAP	2
29	300264-853	BRACE, DASH SUPT UPPER	1
30	* 995346	SCREW, 1/4-20X .50 WAHHTAP	2
31	305428	DASH,GP W/O GRAPHIC,SUS	1
32	* 995346	SCREW, 1/4-20X .50 WAHHTAP	4
33	316868	WASHER,SHOULDER NYLON .25SX.48	4
34	* 44811	SCREW, 1/4-20X .75 HXWATAP	1
35	* 1502	NUT, 1/4-20 REGHEXCTRLK	1
36	307058-860	HOOD	1
37	218167	PAD,ADHESIVE 1.00 X	4
38	303037	GRILL,LWR GPWR	1
39	* 300902	SCREW, #10 X .50 HHTAPPST	4
40	310203	CLIP,HOG RING C-SHAPED	1
41	301425	BRACE,HOOD SUPPORT	1
42	* 301542	SCREW, 10-2451.00HWATAPBLKPHOS	4
43	* 271166	NUT, #10-24 HEXKEPS	4
44	302333	LENS, SMOKED W/TAB	1
45	301541	FOIL, REFLECTOR LENS H-11 LH	1
46	301540	FOIL, REFLECTOR LENS H-11 RH	1
47	* 57796	SCREW, #6 X .50 PLASTITE	4
48	56676	BOLT, .375X .680 HSSH 5/16-18	2
49	* 1498	NUT, 5/16-18 REGHEXCTRLK	2
50	57479	SPRING, HOOD LATCH	2
51	301452	FOIL, HEAT REFLECTOR	1
52	58367-860	PLATE, SEAT F-5 SF & LF	1
53	310680-860	BRACKET, F-5 SEAT SUPPORT	1
54	20507	BOLT, .437X .158 HSSH 5/16-18	2
55	* 1498	NUT, 5/16-18 REGHEXCTRLK	2
56	* 48901	SCREW, 5/16-18X .63 HHC	4
57	* 1498	NUT, 5/16-18 REGHEXCTRLK	4
58	67153	SPRING,SEAT 2.63LG.1.490D	2
59	300284-953	CLAMP,SPRING 1.17"ID ZPL	2
60	* 44811	SCREW, 1/4-20X .75 HXWATAP	2
61	53607	COVER,SEAT SPRING 1.51DX1.0	2
62	58334-860	FENDER F-5 SUS LF FDR SHIFT	1
63	* 995346	SCREW, 1/4-20X .50 WAHHTAP	4
64	* 122017	SCREW, 5/16-18X1.00 HHC	2
65	* 448363	WASHER, FLAT .375X .68X.082	4
66	* 1498	NUT, 5/16-18 REGHEXCTRLK	2
67	66021	TRIM,STRIP BLACK	77.5'
68	180079	SCREW,5/16-18X1.00 HHC	2
69	1498	NUT, 5/16-18 REGHEXCTRLK	2
70	324617	PARTS MANUAL ENGLISH	1
71	324614	OPERATOR'S MANUAL ENGLISH	1
72	324615	OPERATOR'S MANUAL FRENCH	1
73	324615	OPERATOR'S MANUAL GERMAN	1

* Indicates STANDARD HARDWARE ITEMS.

39" LAWN TRACTOR MODEL C3560-520

MOWER SUSPENSION ASSEMBLY



NOTE: ALWAYS USE ORIGINAL EQUIPMENT PARTS. Use of service/replacement parts other than original equipment parts may void your warranty.

ALL UNNUMBERED ITEMS ARE INTERCHANGEABLE WITH OPPOSITE SIDE

3155596

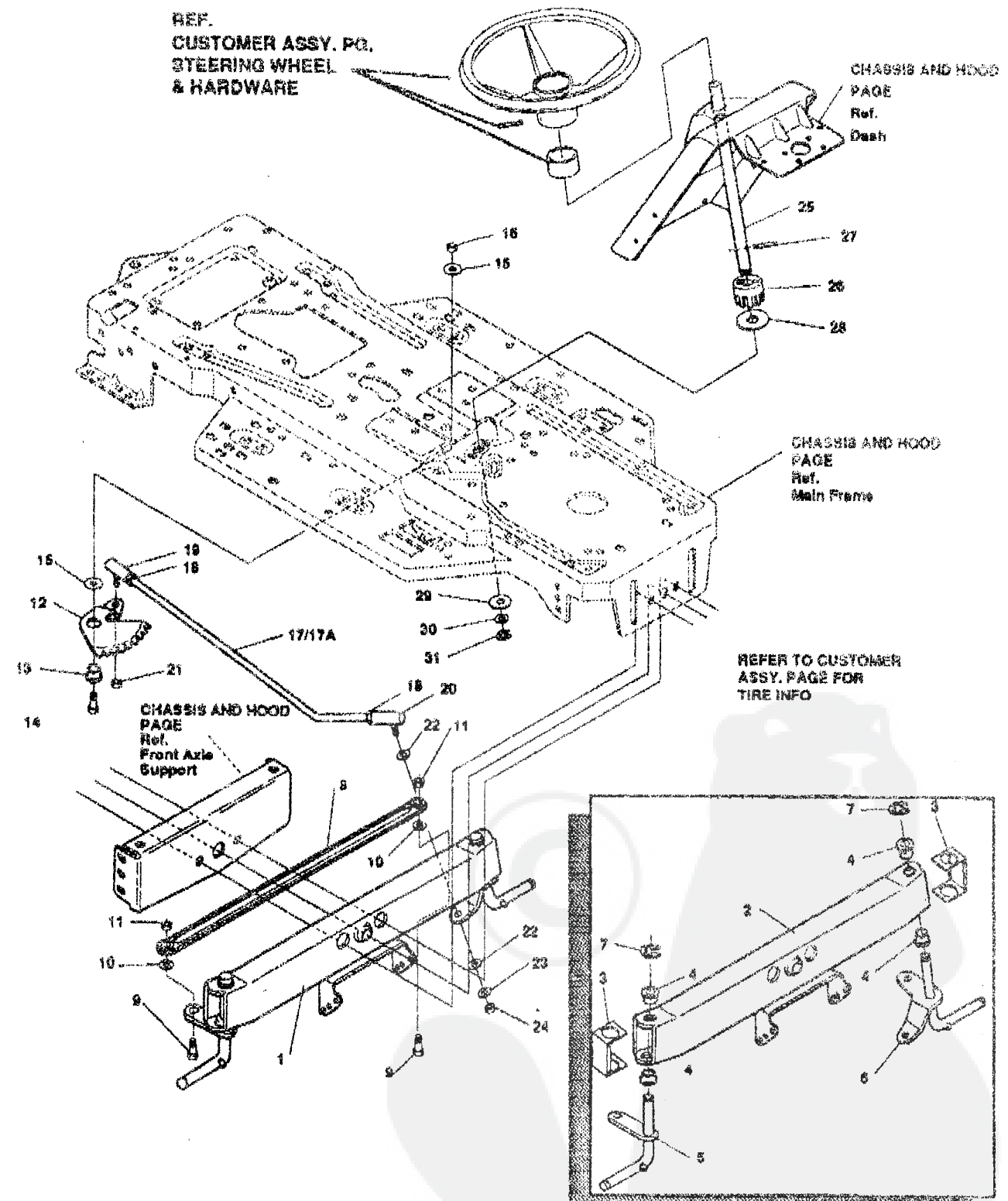
39" LAWN TRACTOR MODEL C3560-520

Key#	Part#	Description	Qty.
1	303044-853	CLUTCH HANDLE	1
2	0120238	NUT, 1/2-13 HEXJAM	1
3	304438-853	KNOB,SHIFT NOMA 1/2-13	1
4	58307-953	CLIP, RETAINING BRKT	2
5	089533B	SCREW, 1/4-20X .63 WASHTAP	2
6	52458-953	BRKT,CABLE RETAINER	1
7	39298	PULLEY, .906X.305 NYLON	1
8	57322	BOLT, .375X .375 HSSH 1/4-20	1
9	01502	NUT, 1/4-20 REGHEXCTRLK	1
10	301491 *	ASSY,CL. CABLE GEN PWR 39SDSUS	1
11	0120813	NUT, 1/4-28 HJAM	1
12	035498	SCREW, 5/16-18X .75 WASHTAP	1
13	57444	TIE, CABLE BLACK NYLON 5.62	1
14	300158-853	ASSY,REAR LIFT	1
15	300159-853	ASSY,LINK,RIGHT SIDE	1
16	0180079	SCREW, 5/16-18X1.00 HHC	1
17	58247	ADJUSTING NUT	1
18	01498	NUT, 5/16-18 REGHEXCTRLK	1
19	0417098	WASHER, FLAT .531X1.06X.096	2
20	8260	PIN, HAIR .091 DIA X1.66LG	2
21	58248-853	BRKT,REAR,HANG,SUSP.	4
22	126211	BOLT, 5/16-18X .69 CARR	4
23	01498	NUT, 5/16-18 REGHEXCTRLK	4
24	59333	BRACKET,HGT/ADJUST SUPPORT	1
25	180077	SCREW, 5/16-18X .75 HHC	3
26	01498	NUT, 5/16-18 REGHEXCTRLK	3
27	300336-860	BRACE, FENDER F-5 SUS	1
28	0180079	SCREW, 5/16-18X1.00 HHC	1
29	045602	WASHER, FLAT .333X .87X .118	1
30	01498	NUT, 5/16-18 REGHEXCTRLK	1
31	0180079	SCREW, 5/16-18X1.00 HHC	1
32	01498	NUT, 5/16-18 REGHEXCTRLK	1
33	301258	QUADRANT,HEIGHT ADJUST	1
34	0190077	SCREW, 5/16-18X .75 HHC	2
35	01498	NUT, 5/16-18 REGHEXCTRLK	2
36	322292-853	HANDLE,LIFT SHORT	1
37	300171	BOLT, .500X .270 HSSH 5/16-18	1
38	046418	WASHER, FLAT .506X .75X.024	1
39	044108	NUT, 5/16-18 HWDFLCTRLK	1
40	301239	PAWL, HEIGHT ADJUST	1
41	300171	BOLT, .500X .270 HSSH 5/16-18	1
42	044108	NUT, 5/16-18 HWDFLCTRLK	1
43	300782-953	POINTER	1
44	132479	WASHER, EXLK .195X.41X.03	1
45	035287	SCREW, #8-32X .38 HHWATAP	1
46	303027	ROD,ACTUATOR,SHORT	1
47	58326	SPRING, HEIGHT ADJUST	1
48	58325	KNOB, HGT ADJ PUSH BUTTON	1
49	58329	GRIP, .750 OD W/ HOLE	1
50	58335-953	BRKT, CABLE RETAIN	1
51	39298	PULLEY, .906X.305 NYLON	1
52	58336	BOLT, .375X .375 HSSH 1/4-20	1
53	01502	NUT, 1/4-20 REGHEXCTRLK	1
54	300341	CABLE, LIFT 21.70 F-5 20X8-6	1
55	300310	PIN,CLEVIS .310DIA+.476LG	1
56	300311	RING, RET E .31X.24	1
57	0120375	NUT, 1/4-20 REGHEX	1
58	300298-953	CLEVIS	1
59	0439455	SCREW, 5/16-18X .56PHPNMA BKPH	1
60	301851	WASHER, 3441DX1.50DX.09 CU BPH	1
61	0120373	NUT, 5/16-18 SQ	1
62	39298	PULLEY, .906X.305 NYLON	1
63	300317	PIN, CLEVIS .38 DIA X1.00 LG	1
64	8260	PIN, HAIR .091 DIA X1.66LG	1
65	300703-953	CLEVIS, LIFT CABLE	1
66	0120372	NUT, 1/4-20 REGSQ	1
67	39522	PIN, CLEVIS .312 X .812	1
68	121222	PIN, COTTER .090/.088X.75LG	1
69	300335	LIFT COVER-39" F5	1
70	0300340	SCREW, #10 X .75 HHPLAST	3

*STANDARD HARDWARE ITEMS

39" LAWN TRACTOR MODEL C3560-520

STEERING ASSEMBLY



NOTE: ALWAYS USE ORIGINAL EQUIPMENT PARTS. Use of service/replacement parts other than original equipment parts may void your warranty.

315850E

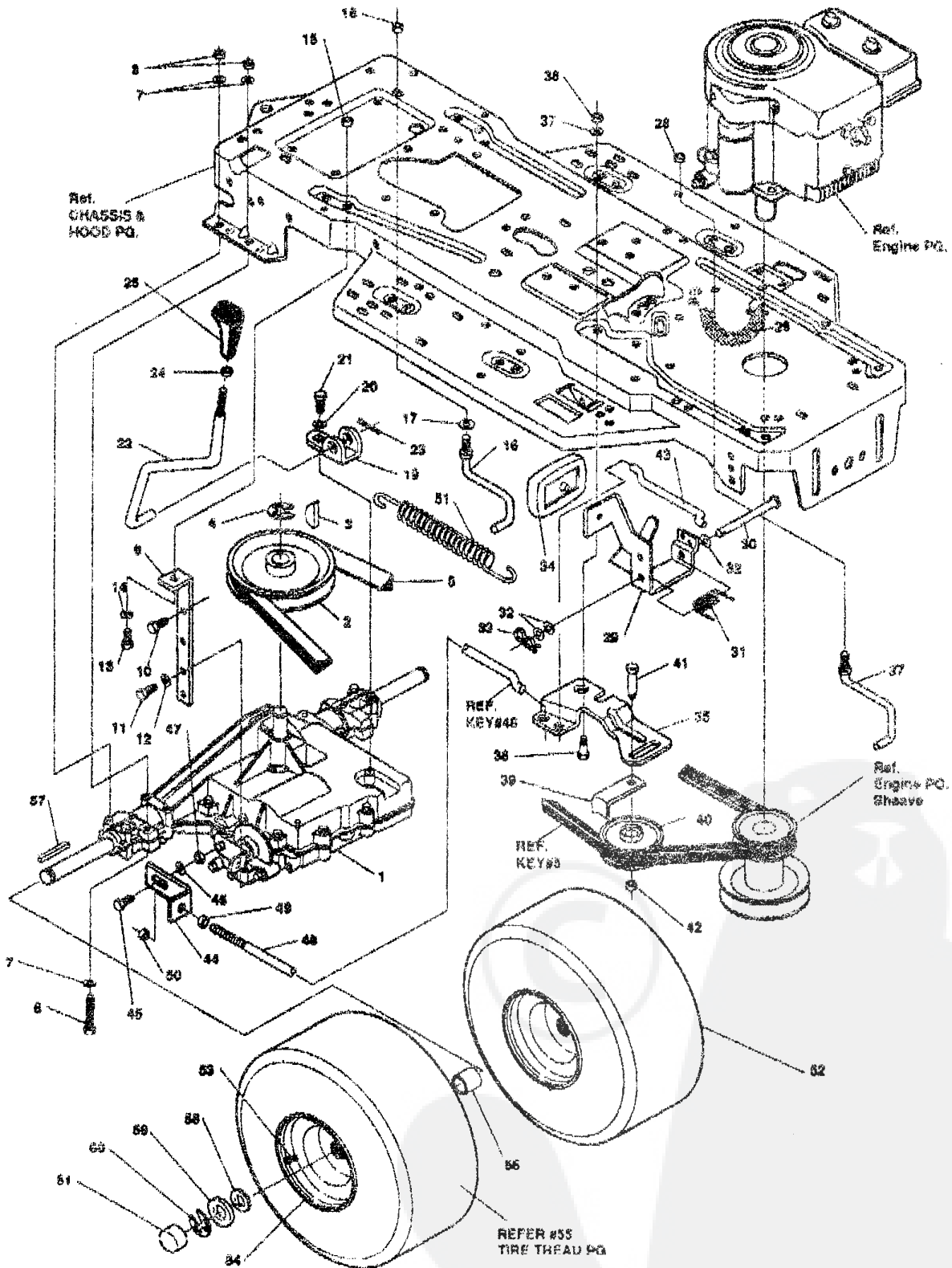
38" LAWN TRACTOR MODEL C3560-520

Keys	Part#	Description	Qty.
1.	*	ASSY,AXLE FRONT	1
2.	300272	ASSY FRONT AXLE SUSPENDED	1
3.	53373	AXLE COVER	2
4.	52407	SPINDLE BEARING	4
5.	302925	ASSY,SPINDLE RH	1
6.	315886	ASSY,SPINDLE LH	1
7.	36625	RING, RETEX .57X.05TRU5133-75	2
8.	304890	TIE ROD ASSY 19.81LG W-SECTION	1
9.	* 190128	SCREW, 3/8-16X1.75 HHC	2
10.	120382	WASHER, REGSPTLK.393X.68X.10	2
11.	* 1499	NUT, 3/8-16 REGHXOTRLK	2
12.	58289	SECTOR, STEERING LF	1
13.	52406	BRNG,FL ECC.610DX .968ODX .56	1
14.	* 180177	SCREW, 1/2-13X1.50 HHC	1
15.	22265	WASHER, FLAT .515X1.38X.110PL	2
16.	* 1500	NUT, 1/2-13 REGHCTRLK	1
17.	58291	STEERING LINK	1
18.	* 124925	NUT, 3/8-24 REGHEXJAM	2
19.	67155	BALL JOINT 3/8 THD SHORT STUD	1
20.	21275	BALL JOINT 3/8 THD LONG STUD	1
21.	* 46692	NUT, 3/8-24 WDFLHLK WHIZ	1
22.	996416	WASHER, FLAT .391X1.00X.125	2
23.	120382	WASHER, REGSPTLK.393X.68X.10	1
24.	* 120369	NUT, 3/8-24 REGHEX	1
25.	55243	SHAFT, STEERING LF	1
26.	58244	PINION, STEERING LF	1
27.	58274	PIN,DOWEL .2500 OD+1.75LG PL	1
28.	301410	BRNG, FL .752IDX1.061ODX .24	1
29.	30139H	WASHER, FORMED1.135X1.53X.12	1
30.	21682	WASHER, FLAT .765X1.25X.042	1
31.	36625	RING, RETEX .57X.05TRU5133-75	1

- * ORDER INDIVIDUAL PARTS.
- * STANDARD HARDWARE ITEMS

39" LAWN TRACTOR MODEL C3560-520

MOTION DRIVE ASSEMBLY



NOTE: ALWAYS USE ORIGINAL EQUIPMENT PARTS.
 Use of service/replacement parts other than original equipment parts may void your warranty.

**ALL UNNUMBERED
 ITEMS ARE INTERCHANGABLE
 WITH OPPOSITE SIDE**

323782A

35" LAWN TRACTOR MODEL C3550-520

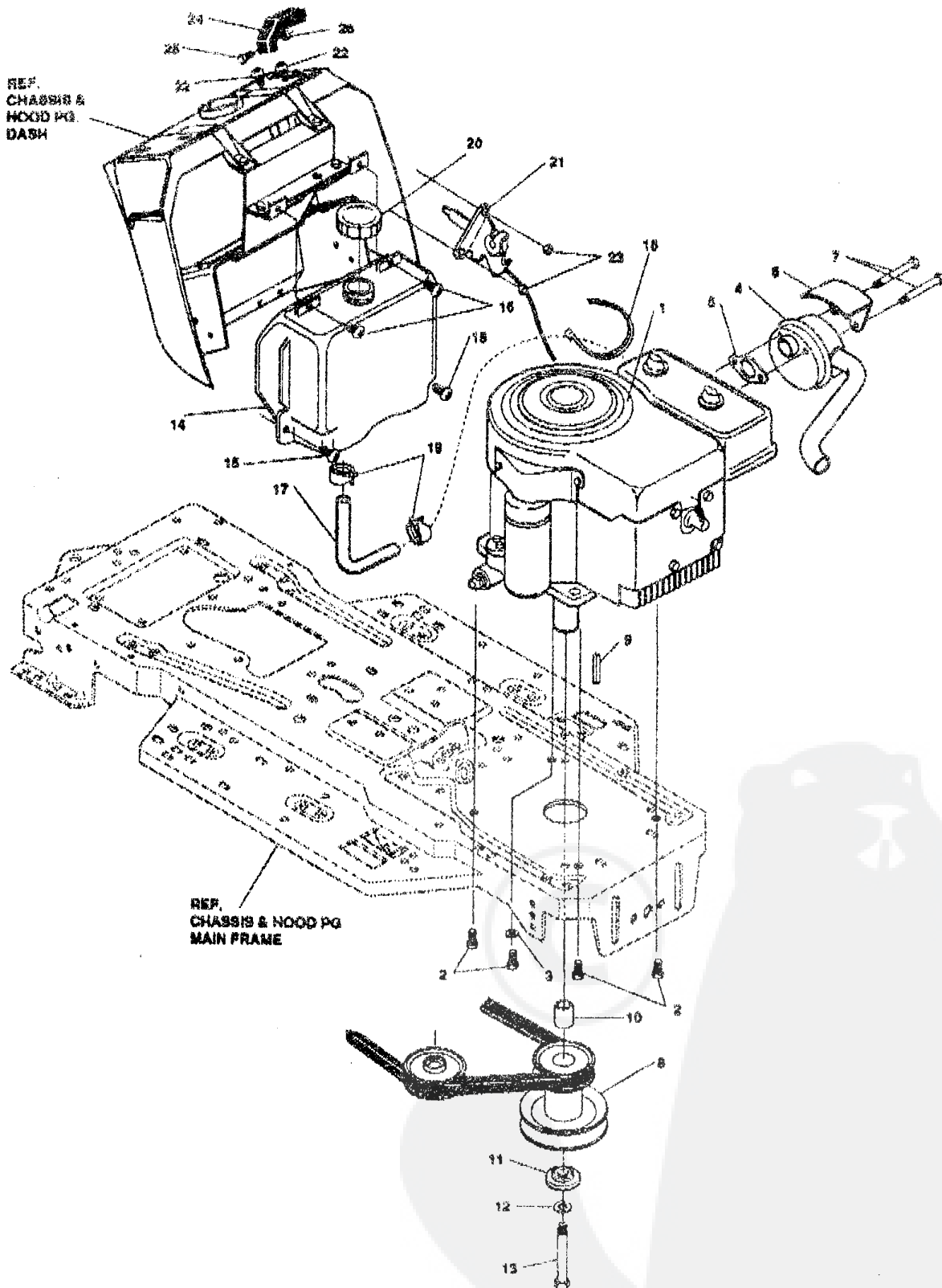
Key#	Part#	Description	Qty.
1	A	TRANSAXLE FOOT 4360 3	1
2	302745	PULLEY, V 4L 6.60 OD	1
3	3021	KEY, WDRF 608 .750X.187X.312	1
4	22053	RING, RETEX .58X.04TRU5100-62	1
5	314120	BELT, V 4L 84.75	1
6	* 180112	SCREW, 5/16-18X2.75 HHC GR5	4
7	120393	WASHER, FLAT .344X.69X.065	4
8	* 1498	NUT, 5/16-18 REGHEXCTRLK	4
9	322471	BRACKET, STABILIZER	1
10	* 50947	SCREW, 3/8-16X1.25 WAHNTAP	1
11	* 35494	SCREW, 5/16-18X .75 WAHNTAP	1
12	120636	WASHER, HVSPTLK .328X.60X.09	1
13	* 122017	SCREW, 5/16-18X1.00 HHC GR2	1
14	120393	WASHER, FLAT .344X.69X.065	1
15	* 1498	NUT, 5/16-18 REGHEXCTRLK	1
16	57259	GUIDE, BELT 5/16-18THD	1
17	120636	WASHER, REGINTLK .320X.61X.03	1
18	* 1498	NUT, 5/16-18 REGHEXCTRLK	1
19	310754-955	BRKT, SHIFT P920-5/F4360-543	1
20	57157	WASHER, .750X.250 SP-TRANSAXLE	1
21	* 58235	SCREW, 1/4-28X.75 NYLNHCGR8	1
22	302743	LEVER, SHIFT FOOT 4360-536 LF	1
23	137185	PIN, COTTER .125 DIA X1.00LG	1
24	* 120238	NUT, 1/2-13 HEXJAM	1
25	304438-853	KNOB, SHIFT NOMA 1/2-13	1
26	321314	SPRING BIAS DRAGLINK	1
27	304016	GUIDE, BELT	1
28	* 1498	NUT, 5/16-18 REGHEXCTRLK	1
29	300308	PEDAL ASSY, BRAKE/CLUTCH LF	1
30	319675	PIN CLEVIS	1
31	57847	SPRING, BRAKE PEDAL	1
32	2968	WASHER, FLAT .504X.75X.059	3
33	56180	PIN HAIR	1
34	48160	PAD, CLUTCH BRAKE W/PRINTING	1
35	300154	ARM, IDLER TRACTION DR. LF	1
36	300793	BOLT, .625X.135 HSSH 5/16-18	1
37	45602	WASHER, FLAT .333X.87X.119	1
38	* 1498	NUT, 5/16-18 REGHEXCTRLK	1
39	39659	RETAINER, BELT	1
40	35374	PULLEY, IDLER V4L 3.06X.62	1
41	45892	BOLT, 3/8-16X1.50 CARR GR2	1
42	* 1499	NUT, 3/8-16 REGHXCTRLK	1
43	57204	ROD, CLUTCH	1
44	57217	BRACKET, BRAKE ROD	1
45	20507	BOLT, .437X.156 HSSH 5/16-18	1
46	45602	WASHER, FLAT .333X.87X.119	1
47	* 1498	NUT, 5/16-18 REGHEXCTRLK	1
48	313659	ROD, BRAKE LT 920 LF 22.25	1
49	* 271184	NUT, 5/16-18 HEXKEPS	1
50	* 1498	NUT, 5/16-18 REGHEXCTRLK	1
51	58369	SPRING, CLUTCH .113X.750X8.75	1
52	314684	TIRE, PU20X8.00-8TURFWHI134	2
53	24167	VALVE STEM	1
54	57165	WHEEL 20X8 00 WHITE .75 DIA HUB	1
55		REFER TO TIRE TREAD PAGE	
56	57479	SPACER, .75 X 1.25 X 1.32	2
57	52928	KEY, SQUARE .1875SQX2.25LG	2
58	* 642	WASHER, FLAT .755X1.31X.075	4
59	* 42615	WASHER, FLAT .755X1.53X.07	2
60	36625	RING, RETEX .57X.05TRU5133-75	2
61	40384	CAP, 1.500ID X 7/8LG HUB	2

* INDICATES STANDARD HARDWARE ITEMS.

^ CONTACT YOUR NEAREST FOOT 4360 TRANSAXLE DEALER FOR PARTS & SERVICE.

39" LAWN TRACTOR MODEL C3560-520

ENGINE & CONTROL ASSEMBLY



NOTE: ALWAYS USE ORIGINAL EQUIPMENT PARTS.
Use of service/replacement parts other than original equipment parts may void your warranty.

**ALL UNNUMBERED
ITEMS ARE INTERCHANGABLE
WITH OPPOSITE SIDE**

316933A

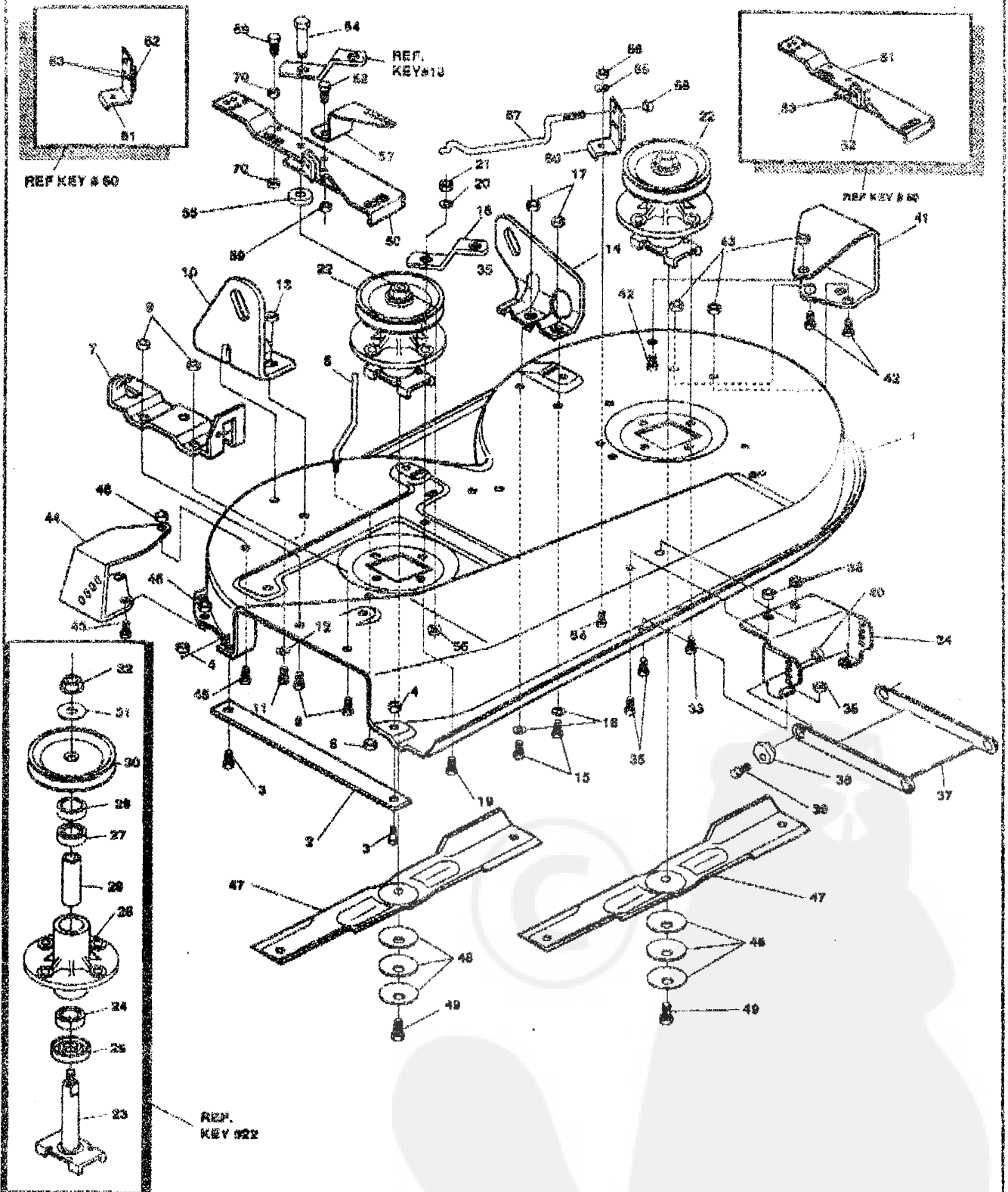
39" LAWN TRACTOR MODEL C3560-520

Key#	Part#	Description	Qty.
1	ENGINE	12 HP B&S 1/2 ECONO (SEE ENGINE MANUAL)	1
2	050947	SCREW, 3/8-16X1.25 WAHHTAP	4
3	136489	WASHER, EXLK .384X.56X.04	1
4	305367	MUFFLER-LO TONE NELSON EXPORT	1
5	46708	GASKET, MUFFLER	1
6	54767	SHIELD, HEAT,FOR ROUND MUFFLER	1
7	0173063	SCREW, 5/16-18X3.50 HHC	2
8	56361	PULLEY ASSY,4.75OFFS 5.6DIA	1
9	57791	KEY, SQUARE .250SQX5.00LG	1
10	304248	SPACER,1.01X1.484 ENGIN PULLEY	1
11	56431	WASHER,.950IDX1.380DX.437PILOT	1
12	120383	WASHER, REGSPTLK.459X.78X.12	1
13	0426644	SCREW, 7/16-20X5.00 HHC	1
14	314991	TANK,FUEL 2-GAL	1
15	0300303	SCREW, .25X.75X.75HHWAPLASTITE	2
16	0995346	SCREW, 1/4-20X .80 WAHHTAP	2
17	47452	GAS LINE .25ID	14'
18	57444	WIRE TIE	1
19	48672	CLAMP, FUEL LINE	2
20	300304	CAP, FUEL - 2.0 THROAT	1
21	303159	THROTTLE, CONTROL	1
22	0320353	SCREW, 10-24X .83PHPNMA	2
23	0271166	NUT, #10-24 HEXKEPS	2
24	300508	KNOB,THROTTLE CONTROL HANDGRIP	1
25	0159565	SCREW, #8-32X .38 PHPNMA	1
26	0120622	NUT, #8-32 REGHX	1

◊ Indicates STANDARD HARDWARE ITEMS.

39" LAWN TRACTOR MODEL C3560-520

PRE-PAINTED DECK



NOTE: ALWAYS USE ORIGINAL EQUIPMENT PARTS. Use of service/replacement parts other than original equipment parts may void your warranty.

ALL UNNUMBERED ITEMS ARE INTERCHANGABLE WITH OPPOSITE SIDE

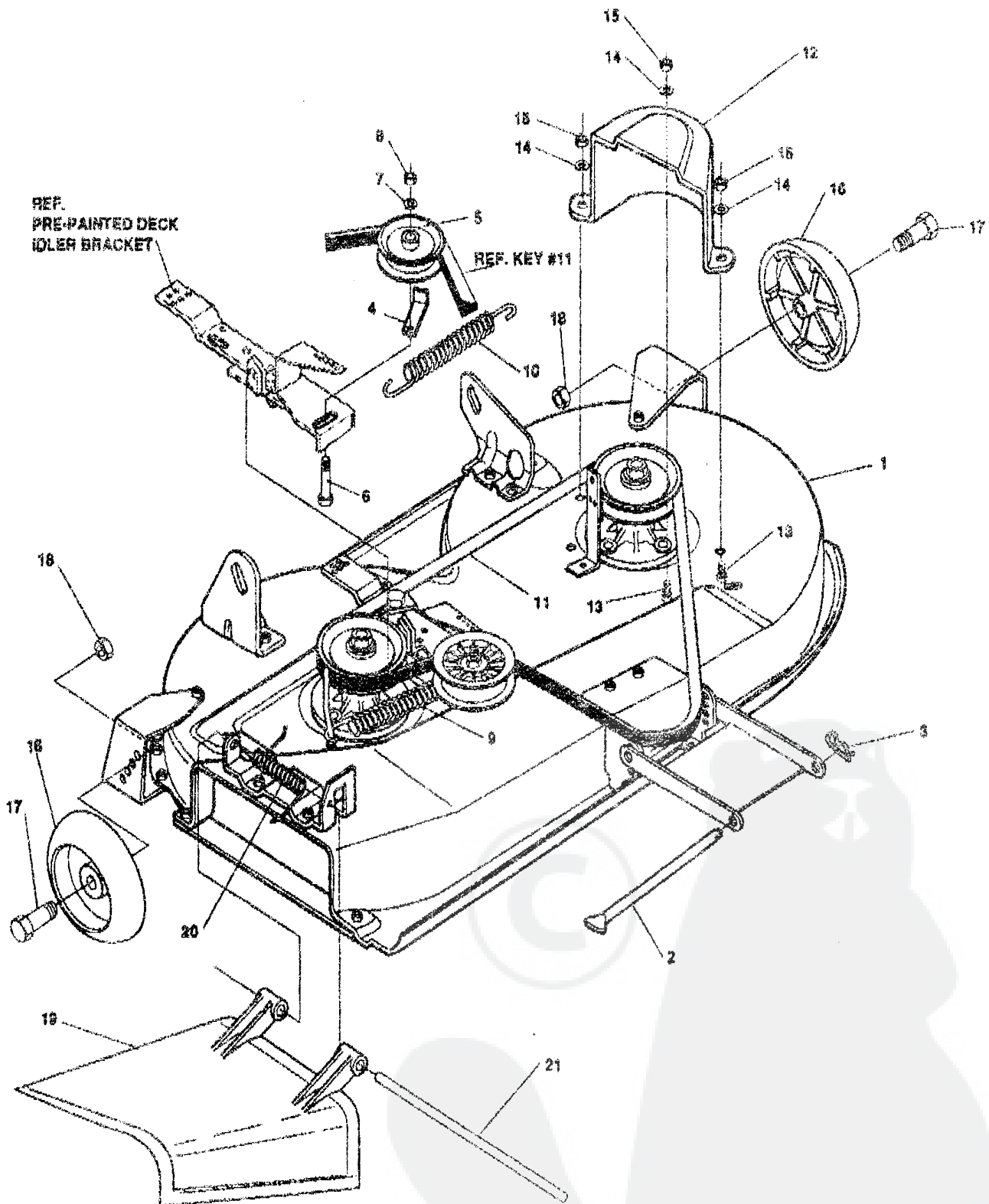
39" LAWN TRACTOR MODEL C3560-520

Key#	Part#	Description	Qty.
1	315610-173	DECK,39"GD MOWER	1
2	57314	BAR, SKID	1
3	120218	BOLT, 5/16-18X .75 CARR	2
4	1498	NUT, 5/16-18 REGHEXCTRLK	2
5	57318	GUIDE, BELT 5/16-18 THD	1
6	1498	NUT, 5/16-18 REGHEXCTRLK	1
7	57360	BRACKET, CHUTE	1
8	120634	SCREW, 5/16-18X .50 HHC	2
9	1498	NUT, 5/16-18 REGHEXCTRLK	2
10	56250	LIFT BRACKET, REAR,RH	1
11	180077	SCREW, 5/16-18X .75 HHC	2
12	120393	WASHER, FLAT .344X .69X.065	2
13	1498	NUT, 5/16-18 REGHEXCTRLK	2
14	56251	BRACKET,DECK LIFT,REAR LH	1
15	180077	SCREW, 5/16-18X .75 HHC	2
18	120393	WASHER, FLAT .344X .69X.065	2
17	1498	NUT, 5/16-18 REGHEXCTRLK	2
18	315302	BRACKET, IDLER SUPPORT	1
19	300345	SCREW, 5/16-18X1.50 WATAP	1
20	120393	WASHER, FLAT .344X .69X.065	1
21	1498	NUT, 5/16-18 REGHEXCTRLK	1
22	58424	QUILL ASSY, 36/38/40/43	2
23	58426	SHAFT/SADDLE 36"	1
24	49562	BRNG, BALL	1
25	50816	DUST SHIELD	1
26	55547	QUILL CASTING	1
27	49562	BRNG, BALL	1
28	50818	SPACER,3.797LX.66HDX.68OD	1
29	51449	SPACER,4.36LX.932ODX.672ID-PM	1
30	52390	PULLEY,28/38" QUILL	1
31	56365	SPECIAL WASHER	1
32	1282	NUT, 7/16-20 WDFLLK	1
33	50634	SCREW, 5/16-18X .80 WAHTAP	7
34	56315	LIFT SUPPORT FRONT DECK	1
35	180075	SCREW, 5/16-18X .63 HHC	4
36	1498	NUT, 5/16-18 REGHEXCTRLK	4
37	59305	LINK BRACKET,DECK FR	1
38	58247	ADJUSTING NUT	2
39	122017	SCREW, 5/16-18X1.00 HHC	2
40	1498	NUT, 5/16-18 REGHEXCTRLK	2
41	300103	WHEEL BRKT, LH	1
42	180075	SCREW, 5/16-18X .63 HHC	3
43	1498	NUT, 5/16-18 REGHEXCTRLK	3
44	300102	WHEEL BRKT, RH	1
45	180075	SCREW, 5/16-18X .63 HHC	3
46	1498	NUT, 5/16-18 REGHEXCTRLK	3
47	57209	BLADE, 39" STD-LIFT 19.5	2
48	2483	WASHER, 3.91DX1.25DX.07 BELLVIL	6
49	39473	SCREW, 3/8-24X1.00 NYL.HHC	2
50	320565	IDLER ARM ASSY.	1
51	300490	IDLER ARM	1
52	306973	BRAKE PAD	1
53	135624	RIVET,TRSET .185 DIAx.41	2
54	300180	BOLT, .50 X .188 HHSM3/8-18	1
55	909418	WASHER,FLAT .391 X 1.--- X .125	1
56	45171	NUT,5/16-18 X .75 HHC WHIZ-LOCK	1
57	300730	BRACKET EXTENSION IDLER	1
58	180077	SCREW,5/16-18 X .75 HHC	1
59	1498	NUT, 5/16-18 REGHEXCTRLK	1
60	303247	ASSY BLADE BRAKE	1
61	303248	BRAKE ARM	1
62	306973	BRAKE PAD	1
63	135624	RIVET,TRSET .185 DIAx.41	2
64	120228	SCREW,5/16-18X.63 HHC	1
65	120393	WASHER,FLAT .344 X .69 X .65	1
66	1498	NUT, 5/16-18 REGHEXCTRLK	1
67	300316	ROD BRAKE	1
68	1502	NUT, 1/4-20 REGHEXCTRLK	1
69	121954	SCREW, 1/4-20X2.00 HHC	1
70	271172	NUT, 1/4-20 REGHEXCTRLK	2

Ø Indicates STANDARD HARDWARE ITEMS

39" LAWN TRACTOR MODEL C3560-520

FINAL DECK ASSEMBLY



NOTE: ALWAYS USE ORIGINAL EQUIPMENT PARTS.
 Use of service/replacement parts other than original equipment parts may void your warranty.

**ALL UNNUMBERED
 ITEMS ARE INTERCHANGABLE
 WITH OPPOSITE SIDE**

316108C

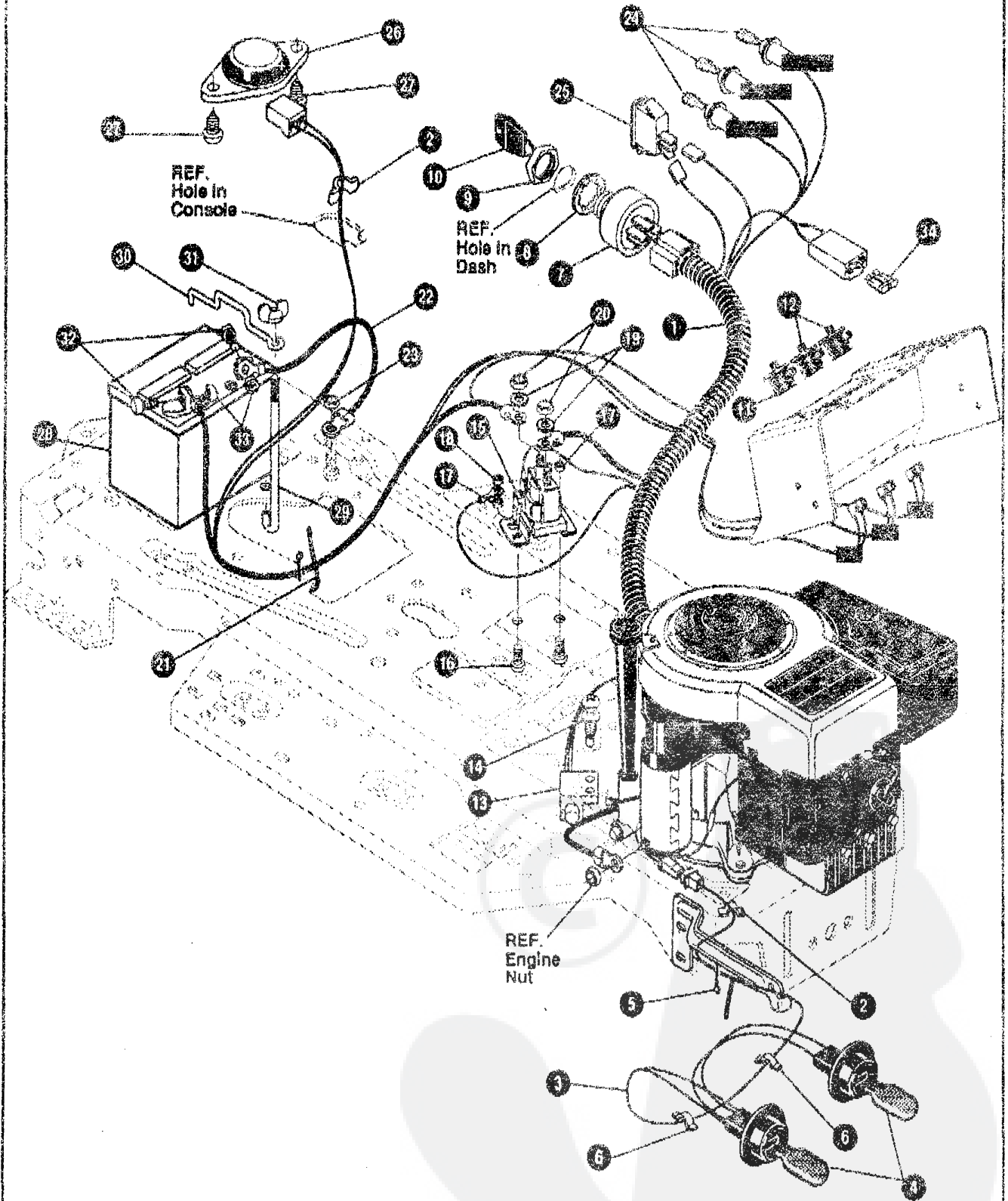
39" LAWN TRACTOR MODEL C3560-520

Key#	Part#	Description	Qty.
1.	*	DECK ASSY 39"SD SUS	1
2.	58308	ROD, DECK HITCH	1
3.	8280	PIN, HAIR .091 DIA X 1.66 LG	1
4.	300844-983	RETAINER, BELT	1
5.	303030	PULLEY, IDLER OFF	1
6.	57325	BOLT, 3/8-16 X 2.00 CARR	1
7.	120382	WASHER, REGSPTLK.393X.68X.10	1
8.	* 120377	NUT, 3/8-16 REGHX	1
9.	322054	SPRING .071 X .62 X 4.37	1
10.	300473	SPRING, TENSION	1
11.	300680	BELT, V 5L 77.75 KEVLAR	1
12.	302803	GUARD, BELT LH PLASTIC	1
13.	* 120339	SCREW, 5/16-18 X .63 HHC	3
14.	120393	WASHER, FLAT .344X .69X.085	3
15.	* 1498	NUT, 5/16-18 REGHEXCTRLK	3
16.	302611	WHEEL, SD 6.000DX1.38WD	2
17.	23783	BOLT, .500X1.390 HHSH 3/8-16	2
18.	* 1499	NUT, 3/8-16 REGHXOTRLK	2
19.	57818	CHUTE-36SD,39SD,45SD	1
20.	314975	SPRING TORSION CHUTE DEF.	1
21.	57317	PIVOT ROD, CHUTE	1

- * Indicates STANDARD HARDWARE ITEMS.
- * ORDER INDIVIDUAL PARTS.

39" LAWN TRACTOR MODEL C3560-520

ELECTRICAL ASSEMBLY



NOTE: ALWAYS USE ORIGINAL EQUIPMENT PARTS.
 Use of service/replacement parts other than original equipment parts may void your warranty.

ALL UNNUMBERED ITEMS ARE INTERCHANGABLE WITH OPPOSITE SIDE

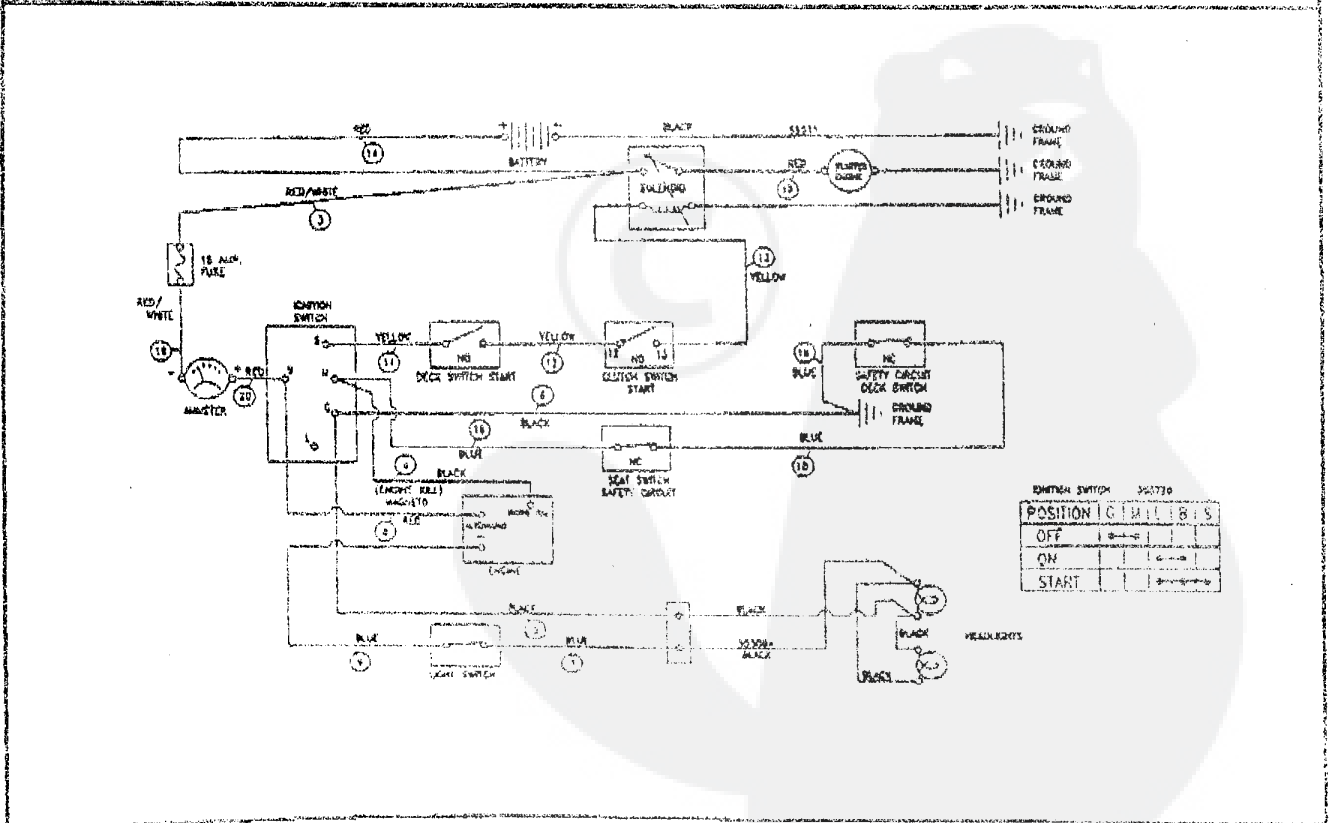
322767A

39" LAWN TRACTOR MODEL C3560-520

Key#	Part#	Description	Qty
1.	320087	HARNESS, 12-12.5, NI 1014, WRAP, LP	1
2.	41482	PRESS CLIP, 1.580LG, 255ID	2
3.	303064	ASSY, LIGHT WIRE, 1/4 TURN	1
4.	52572	BULB, HEADLAMP	1
5.	57444	TIE, CABLE BLACK NYLON 5.62L	2
6.	41482	PRESS CLIP, 1.580LG, 255ID	2
7.	305720	SWITCH, IGN (AFTER FIRE) 3 POSN	1
8.	300193	NUT, 5/8-32 ACC #125 PLAST BLK	1
9.	300194	BOOT, IGN SWITCH	1
10.	300626	KEY, IGNITION SWITCH	1
11.	300220	SWITCH, SNAPMNT NO .055(.115)BLK	1
12.	59277	SWITCH, SNAPMNT NO .055(.156) GR	2
13.	57476	SWITCH, SCR MNT DP NO NO BLK	1
14.	57220	SCREW, #12 X .50 PHRNHTAP BLK	2
15.	53716	SOLENOID	1
16.	187746	SCREW, 1/4-20X .75 HXSEMMA	2
17.	1502	NUT, 1/4-20 REGHEXCTRLK	2
18.	271172	NUT, 1/4-20 REGHEXKEPS	1
19.	138495	WASHER, EXLK .320X.61X.05	2
20.	120368	NUT, 5/16-24 REGHEX	2
21.	57444	TIE, CABLE BLACK NYLON 5.62L	1
22.	65511	WIRE, GROUND, 12.5"	1
23.	271184	NUT, 5/16-18 HEXKEPS	1
24.	57760	BULB, INDICATOR	1
25.	300334	LIGHT SWITCH ON/OFF PANEL MNT	1
26.	57547	SWITCH, SEAT	1
27.	160505	SCREW, 1/4-20X .38PHNHNMAORZ	2
28.	302257	BATTERY 12V 7 PLATE	1
29.	57551	ROD, BATTERY	1
30.	57552	ROD, BATTERY, TOP	1
31.	310087	NUT, WING 1/4-20 SMALL PLASTC	1
32.	120854	SCREW, 1/4-20X .63 HHG GR2	2
33.	271172	NUT, 1/4-20 REGHEXKEPS	2
34.	302031	FUSE, 15 AMP SPADE TYPE	1

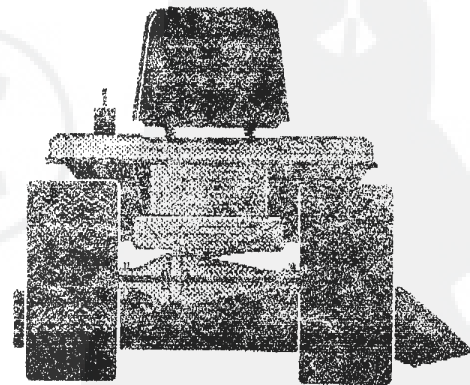
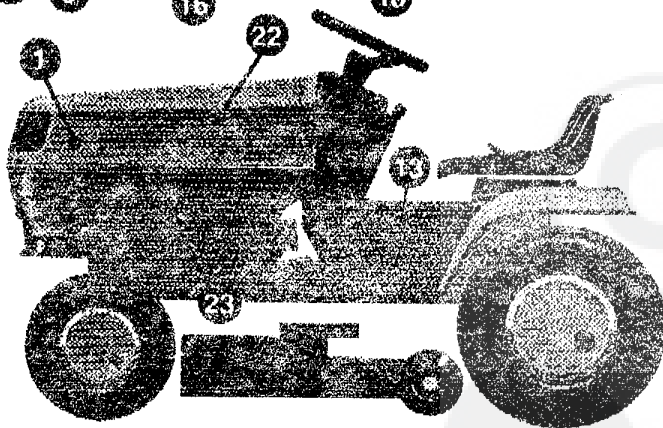
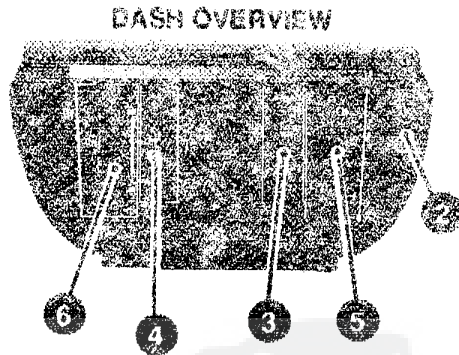
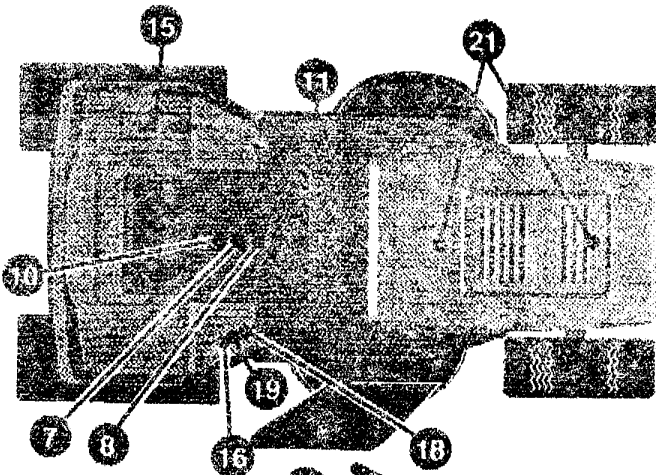
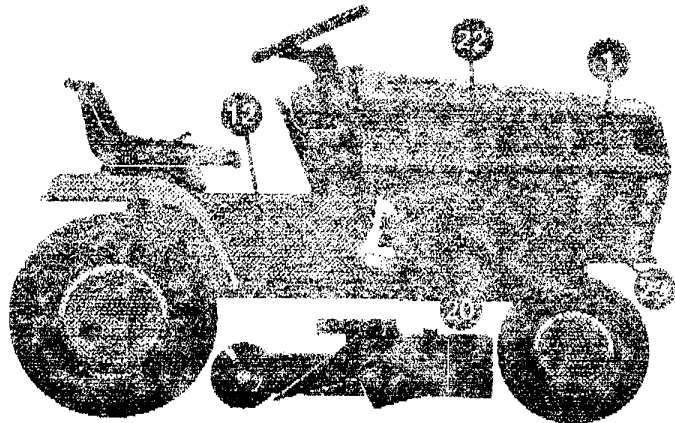
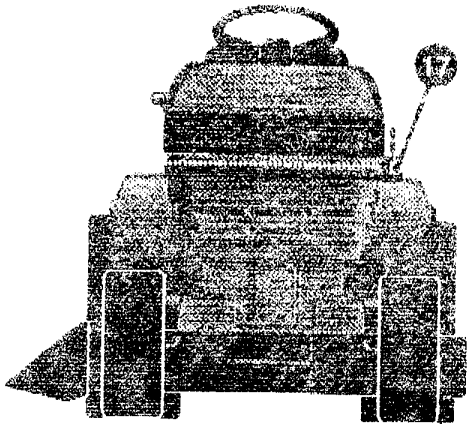
• Indicates STANDARD HARDWARE ITEMS.
 ** SPADE TYPE FUSES ARE INCLUDED WITH THE WIRE HARNESS.

SCHEMATIC DRAWING:



39" LAWN TRACTOR MODEL C3560-520

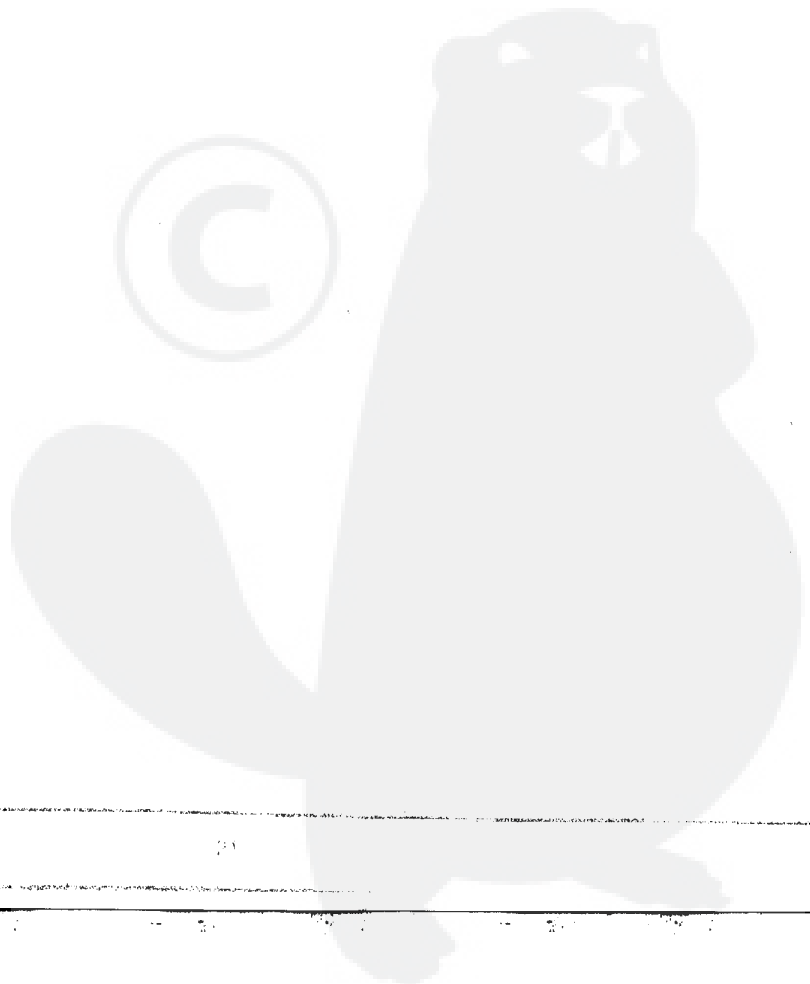
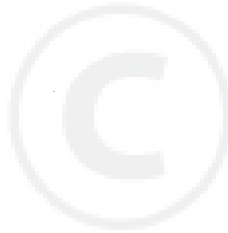
DECALS



32167BA

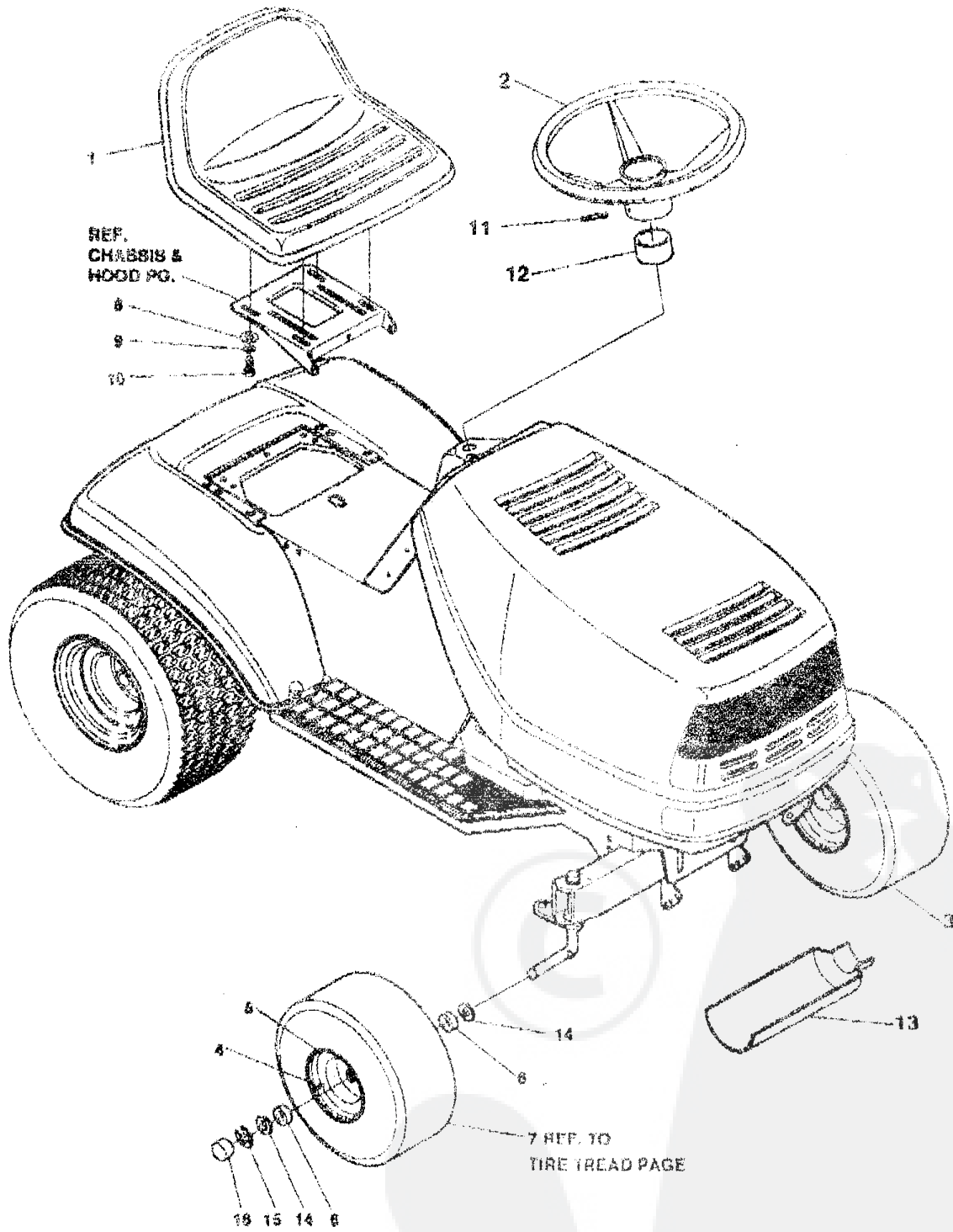
39" LAWN TRACTOR MODEL C3560-520

Key#	Part#	Description	Qty.
1.	311198	NAMEPLATE AL-KO SATIN SILVER	2
2.	68900	DECAL, BLADE ENGAGE EUROPE	1
3.	300448	DECAL, DASH RH TRANSLUCENT	1
4.	302049	DECAL, DASH LH PLAIN	1
5.	305786	DECAL, DASH, RH IGN	1
6.	305767	DECAL, DASH LH	1
7.	69524	DECAL, INSTRUCT CONSOLE TOP GER	1
8.	69525	DECAL, INSTRUCT CONSOLE TOP FR	1
9.		REFERENCE ONLY	
10.	307047	DECAL, 3-SPEED CONSOLE TOP	1
11.	307383	DECAL, INSTR. CONSOLE TOP ENGL	1
12.	324074	DECAL, CONSOLE T12/97 SD RH	1
13.	324075	DECAL, CONSOLE T12/97 SD LH	1
14.		REFERENCE ONLY	
15.	68901	DECAL, BLADE HEIGHT ADJ. EUROPE	1
16.	68902	DECAL, WARNING FRENCH/GERMAN	1
17.	301931	DECAL, HEIGHT ADJUSTMENT FRENCH	1
18.	305770	DECAL, CAUTION TRIANGLE EUROPE	1
19.	310553	DECAL, DANGER ENGLISH	1
20.	68903	DECAL, BRAKE/CLUTCH ISO	1
21.	305602	FOAM, HOOD 4X15	2
22.	305603	PAD, 18 X 6 FOAM HOOD	2
23.	305604	FOAM, HOOD 7X12	2



38" LAWN TRACTOR MODEL C3560-820

CUSTOMER ASSEMBLY



CUSTOMER ASSEMBLY VIEW

315857 PARTS BAG ASBY QTY1

Key#	Part#	Description	Qty
1	304810	SEAT, 440 MICH.	1
2	301251	WHEEL, STEERING, 13"	1
3	313582	TIRE, PU 15X6 OXF TURF	2
4	24167	VALVE STEM	1
5	39029	WHEEL W/BRO.	1
6	30079	BEARING, FL1, 3800-75310 17M	2
7		REFER TO TIRE TREAD PAGE	
8	120393	WASHER, FLAT 34X1.69X 065	4
9	120639	WASHER, HVE/PTX 328X.60X 06	4
10	122007	SCREW 5/16-19X 78 HMC	4
11	456378	SPRING 250DIA X 2 BOLD HVR/L	1
12	57312	COVER, STEERING SHAFT	1
13	84073	TROUGH, OIL DRAIN	1
14	642	WASHER, FLAT 755X1.91X 075	4
15	30628	RING, RETEX 67X 051TR03150 75	2
16	40394	CAP, 1 500ID X 76LG HUB	2

