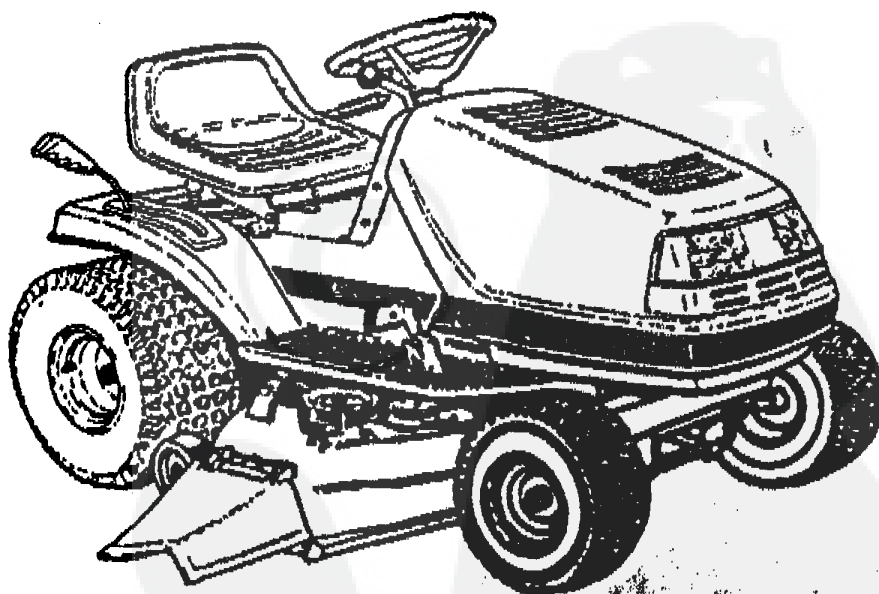
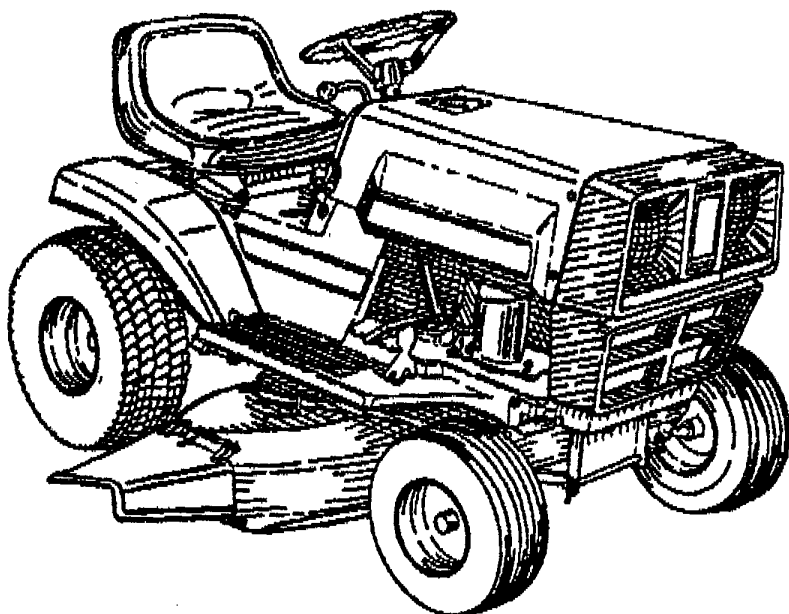


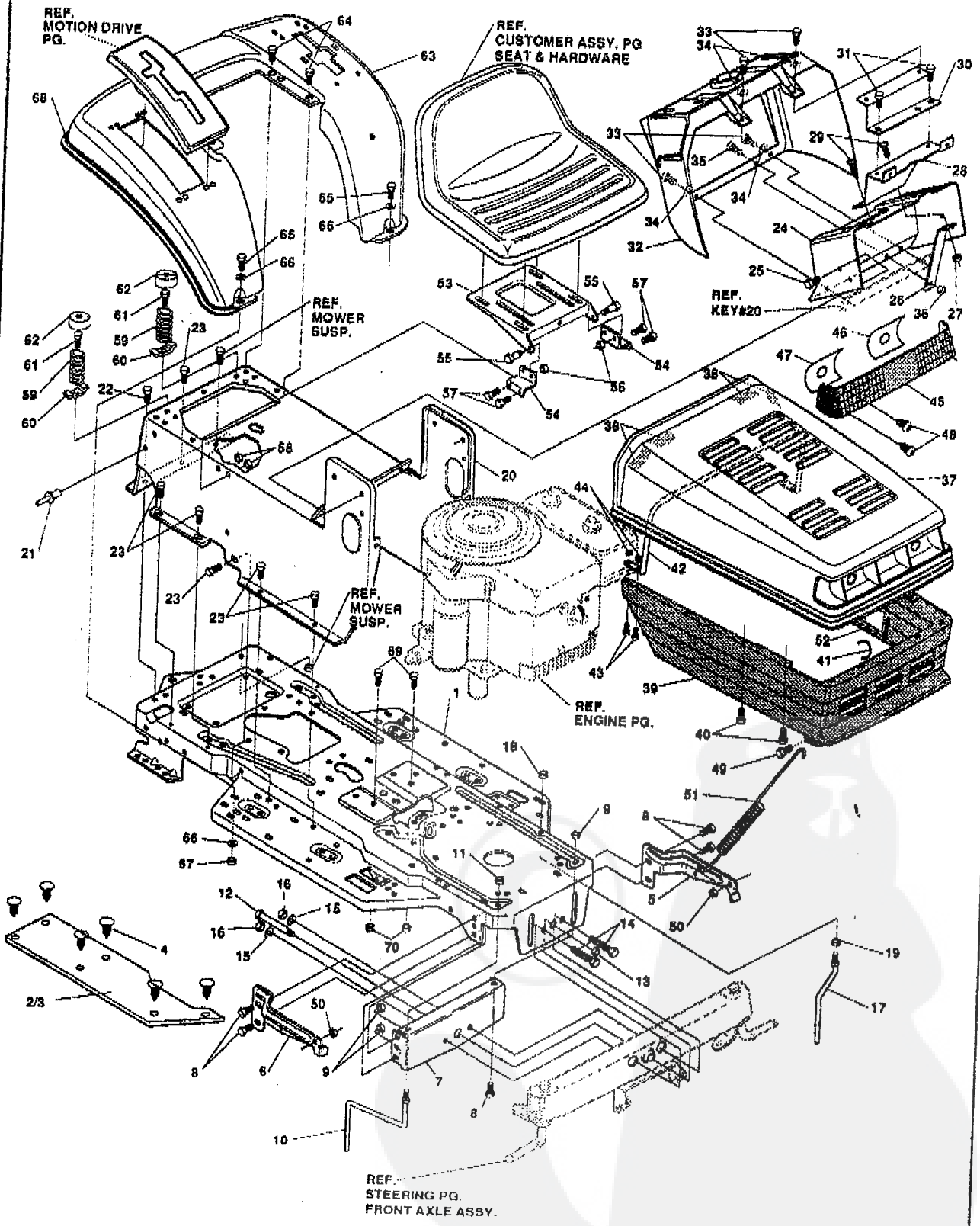
# TRACTEUR TONDEUSE MANUEL PIECES DE RECHANGE



**MODELE C3560-530**

**TRACTEUR TONDEUSE 40" MODELE C3560-530**

**ENSEMBLE CHASSIS & CAPOT**



UTILISEZ DES PIECES D'ORIGINE POUR CONSERVER L'APPLICATION DE LA GARANTIE.

TOUTES LES PIECES NON REFEREES SONT INTERCHANGEABLES AVEC LEURS OPPOSEES.

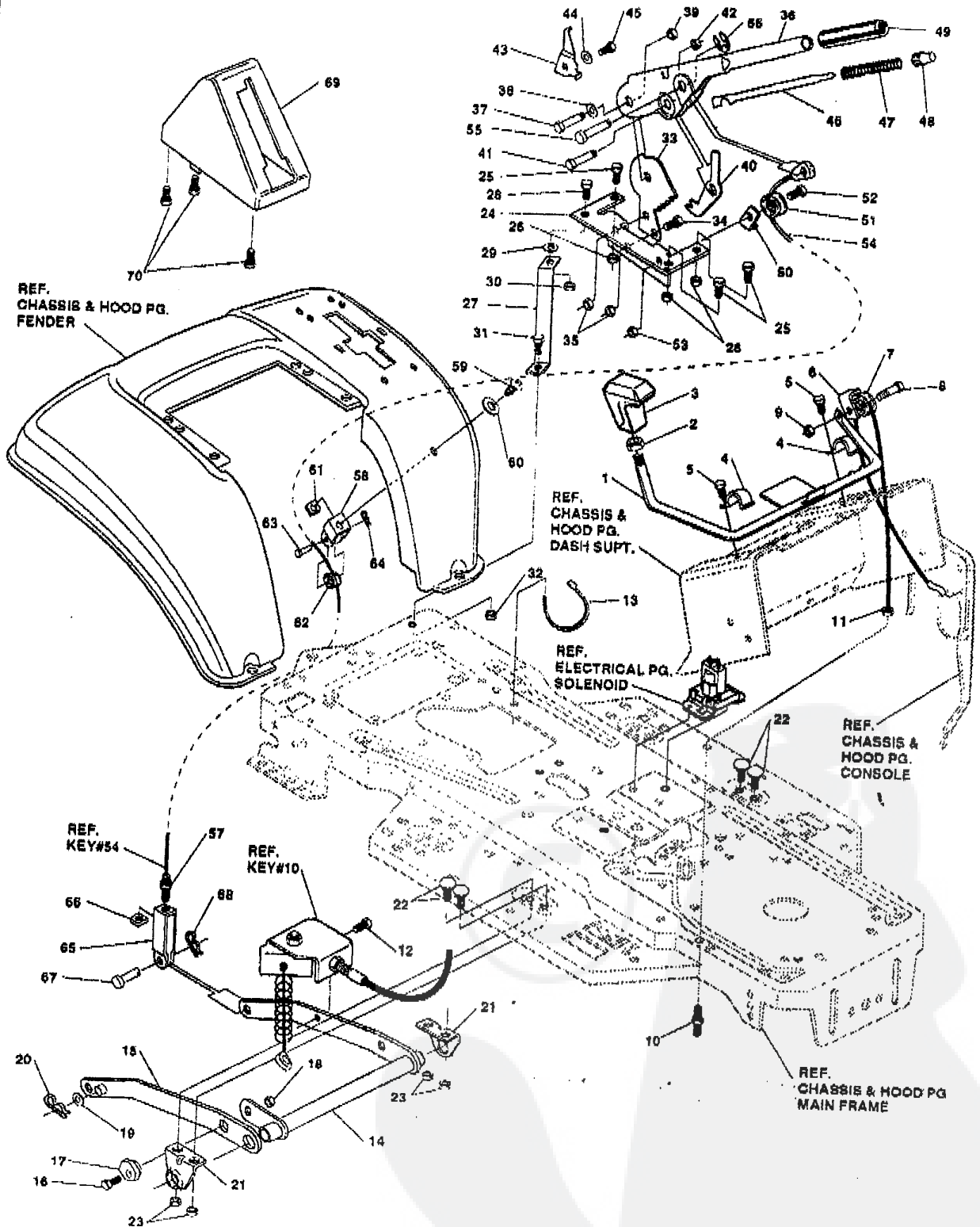
## TRACTEUR TONDEUSE 40" MODELE C3560-530

| key# | part#      | description                              | qty   |
|------|------------|--|-------|
| 1    | 321708-860 | FRAME,LF MAIN P820/F4360                 | 1     |
| 2    | 310005     | FOOTPAD,LH                               | 1     |
| 3    | 310006     | FOOTPAD,RH                               | 1     |
| 4    | 309235     | FASTENER, RATCHET                        | 12    |
| 5    | 9785       | BRACKET,GRILLE LH                        | 1     |
| 6    | 9784       | BRACKET,GRILLE RH                        | 1     |
| 7    | 56361      | BRACKET, FRONT AXLE                      | 1     |
| 8    | 056030*    | SCREW, 5/16-18X.75WDFLLK                 | 5     |
| 9    | 055273     | NUT, 5/16-18 HXWDFLLK                    | 5     |
| 10   | 300440     | GUIDE, BELT, RIDER                       | 1     |
| 11   | 01498      | NUT, 5/16-18 REGHEXCTRLK                 | 1     |
| 12   | 308207     | BOLT, .625X2.180 HSH 1/2-13NC            | 1     |
| 13   | 0309008    | NUT, 1/2-13 REGHCTRLK                    | 1     |
| 14   | 0122207    | SCREW, 3/8-16X3.00 HHC                   | 2     |
| 15   | 2483       | WASHER, 3/8IDX1.25DX.07 BELLVIL          | 2     |
| 16   | 01499      | NUT, 3/8-16 REGHXCTRLK                   | 2     |
| 17   | 300635     | GUIDE, SHORT BELT RIDER 15"WH            | 1     |
| 18   | 0124824    | NUT, 5/16-18 HEXJAM                      | 1     |
| 19   | 0271190    | NUT, 3/8-16 HEXKEPS                      | 1     |
| 20   | 309660-860 | CONSOLE, W/O TOP SHIFT                   | 1     |
| 21   | 46763      | RIVET, POP, .187DIA X .450               | 1     |
| 22   | 035497     | SCREW, 5/16-18X .50 WAHHTAP              | 1     |
| 23   | 0995346    | SCREW, 1/4-20X .50 WAHHTAP               | 12    |
| 24   | 9132       | SUPPORT, DASH                            | 1     |
| 25   | 0300303    | SCREW, .25X.75X.75HHWAPLASTITE           | 2     |
| 26   | 9197       | BRACE, DASH SUPT LOWER                   | 1     |
| 27   | 01502      | NUT, 1/4-20 REGHEXCTRLK                  | 1     |
| 28   | 9744       | BRKT, GAS TANK                           | 1     |
| 29   | 0995346    | SCREW, 1/4-20X .50 WAHHTAP               | 2     |
| 30   | 9208       | BRACE, DASH SUPT UPPER                   | 1     |
| 31   | 095346     | SCREW, 1/4-20X .50 WAHHTAP               | 2     |
| 32   | 305428     | DASH,GP W/O GRAPHIC,SUS                  | 1     |
| 33   | 0995346    | SCREW, 1/4-20X .50 WAHHTAP               | 4     |
| 34   | 316868     | WASHER, SHOULDER NYLON .255X.46          | 4     |
| 35   | 044811     | SCREW, 1/4-20X .75 HXWATAP               | 1     |
| 36   | 01502      | NUT, 1/4-20 REGHEXCTRLK                  | 1     |
| 37   | 307058-860 | HOOD, PLASTIC                            | 1     |
| 38   | 318197     | PAD,ADHESIVE 1.00 X                      | 4     |
| 39   | 303037     | GRILL,LWR                                | 1     |
| 40   | 0300302    | SCREW, #10 X .50 HHTAPPST                | 4     |
| 41   | 310203     | CLIP,HOG RING C-SHAPED                   | 1     |
| 42   | 301425     | BRACE,HOOD SUPPORT                       | 1     |
| 43   | 0301542    | SCREW, 10-24X1.00HWATAPBLKPHOS           | 4     |
| 44   | 0271166    | NUT, #10-24 HEXKEPS                      | 4     |
| 45   | 302333     | LENS, SMOKED W/TAB                       | 1     |
| 46   | 301541     | FOIL, REFLECTOR LENS H-11 LH             | 1     |
| 47   | 301540     | FOIL, REFLECTOR LENS H-11 RH             | 1     |
| 48   | 057796     | SCREW, #6 X .50 PLASTITE                 | 4     |
| 49   | 56676      | BOLT, .375X .580 HSH 5/16-18             | 2     |
| 50   | 01498      | NUT, 5/16-18 REGHEXCTRLK                 | 2     |
| 51   | 57478      | SPRING, HOOD LATCH                       | 2     |
| 52   | 301452     | FOIL, HEAT REFLECTOR                     | 1     |
| 53   | 58367-860  | PLATE, SEAT                              | 1     |
| 54   | 310860-860 | BRACKET, F-5 SEAT SUPPORT                | 1     |
| 55   | 20507      | BOLT, .437X .156 HSH 5/16-18             | 2     |
| 56   | 01498      | NUT, 5/16-18 REGHEXCTRLK                 | 2     |
| 57   | 048901     | SCREW, 5/16-18X .63 HHC                  | 4     |
| 58   | 01498      | NUT, 5/16-18 REGHEXCTRLK                 | 4     |
| 59   | 57153      | SPRING,SEAT 2.63LG,1.49OD                | 2     |
| 60   | 1341       | CLAMP,SPRING 1.17"ID                     | 2     |
| 61   | 044811     | SCREW, 1/4-20X .75 HXWATAP               | 2     |
| 62   | 56907      | COVER,SEAT SPRING 1.51DX1.0              | 2     |
| 63   | 308653-860 | FENDER F-5 SUS LF FDR SHIFT              | 1     |
| 64   | 0995346    | SCREW, 1/4-20X .50 WAHHTAP               | 4     |
| 65   | 0122017    | SCREW, 5/16-18X1.00 HHC                  | 2     |
| 66   | 0446363    | WASHER, FLAT .375X .88X.082              | 4     |
| 67   | 01498      | NUT, 5/16-18 REGHEXCTRLK                 | 2     |
| 68   | 56021      | TRIM,STRIP,BLACK                         | 77.5" |
| 69   | 180079     | SCREW,5/16-18X1.00 HHC                   | 2     |
| 70   | 1498       | NUT,5/16-18 REGHEXCTRLK                  | 2     |
| 71   | 322810     | FRENCH OPERATOR MANUAL (NOT ILLUSTRATED) | 1     |
| 72   | 324355     | ENGLISH PARTS MANUAL (NOT ILLUSTRATED)   | 1     |
| 73   | 324366     | GRASS COLLECTOR MANUAL                   | 1     |
| 74   | 324253     | AIR ASSIST MANUAL                        | 1     |

◊ Indicates STANDARD HARDWARE ITEMS.

**TRACTEUR TONDEUSE 40" MODELE C3560-530**

**ENSEMBLE SUSPENSION TONDEUSE**



UTILISEZ DES PIECES D'ORIGINE POUR CONSERVER L'APPLICATION DE LA GARANTIE.

TOUTES LES PIECES NON REFEREES SONT INTERCHANGEABLES AVEC LEURS OPPOSEES.

## TRACTEUR TONDEUSE 40" MODELE C3560-530

| key# | part#      | description                      | qty. |
|------|------------|----------------------------------|------|
| 1    | 303044-853 | CLUTCH HANDLE                    | 1    |
| 2    | 0120238    | NUT, 1/2-13 HEXJAM               | 1    |
| 3    | 304438-653 | KNOB,SHIFT NOMA 1/2-13           | 1    |
| 4    | 58307-953  | CLIP, RETAINING BRKT             | 2    |
| 5    | 0995338    | SCREW, 1/4-20X .63 WAHHTAP       | 2    |
| 6    | 52456-953  | BRKT,CABLE RETAINER              | 1    |
| 7    | 39298      | PULLEY, .906X.305 NYLON          | 1    |
| 8    | 57322      | BOLT, .375X .375 HSSH 1/4-20     | 1    |
| 9    | 01502      | NUT, 1/4-20 REGHEXCTRLK          | 1    |
| 10   | 301491     | ASSY,CL. CABLE 39SDSUS           | 1    |
| 11   | 0120613    | NUT, 1/4-28 HJAM                 | 1    |
| 12   | 035498     | SCREW, 5/16-18X .75 WAHHTAP      | 1    |
| 13   | 57444      | TIE, CABLE BLACK NYLON 5.62      | 1    |
| 14   | 300158-853 | ASSY,REAR LIFT                   | 1    |
| 15   | 300169-853 | ASSY,LINK,RIGHT SIDE             | 1    |
| 16   | 0180079    | SCREW, 5/16-18X1.00 HHC          | 1    |
| 17   | 58247      | ADJUSTING NUT                    | 1    |
| 18   | 01498      | NUT, 5/16-18 REGHEXCTRLK         | 1    |
| 19   | 0417098    | WASHER, FLAT .531X1.06X.095      | 2    |
| 20   | 8260       | PIN, HAIR .091 DIA X1.66LG       | 2    |
| 21   | 58248-853  | BRKT,REAR,HANG,SUSP.             | 2    |
| 22   | 126211     | BOLT, 5/16-18X .63 CARR          | 4    |
| 23   | 01498      | NUT, 5/16-18 REGHEXCTRLK         | 4    |
| 24   | 58333      | BRACKET,HGT/ADJUST SUPPORT       | 1    |
| 25   | 180077     | SCREW, 5/16-18X .75 HHC          | 3    |
| 26   | 01498      | NUT, 5/16-18 REGHEXCTRLK         | 3    |
| 27   | 300336-850 | BRACE, FENDER F-5 SUS            | 1    |
| 28   | 0180079    | SCREW, 5/16-18X1.00 HHC          | 1    |
| 29   | 045602     | WASHER, FLAT .333X .87X.119      | 1    |
| 30   | 01498      | NUT, 5/16-18 REGHEXCTRLK         | 1    |
| 31   | 0180079    | SCREW, 5/16-18X1.00 HHC          | 1    |
| 32   | 01498      | NUT, 5/16-18 REGHEXCTRLK         | 1    |
| 33   | 301238     | QUADRANT,HEIGHT ADJUST           | 1    |
| 34   | 0180077    | SCREW, 5/16-18X .75 HHC          | 2    |
| 35   | 01498      | NUT, 5/16-18 REGHEXCTRLK         | 2    |
| 36   | 322292-853 | HANDLE,LIFT SHORT                | 1    |
| 37   | 300171     | BOLT, .500X .270 HSSH 5/16-18    | 1    |
| 38   | 996418     | WASHER, FLAT .506X .75X.024      | 1    |
| 39   | 044108     | NUT, 5/16-18 HWDFLCTRLK          | 1    |
| 40   | 301239     | PAWL, HEIGHT ADJUST              | 1    |
| 41   | 300171     | BOLT, .500X .270 HSSH 5/16-18    | 1    |
| 42   | 044108     | NUT, 5/16-18 HWDFLCTRLK          | 1    |
| 43   | 300782-953 | POINTER                          | 1    |
| 44   | 138479     | WASHER, EXLK .195X.41X.03        | 1    |
| 45   | 035287     | SCREW, #8-32X .38 HHWATAP        | 1    |
| 46   | 303027     | ROD,ACTUATOR-SHORT               | 1    |
| 47   | 58326      | SPRING, HEIGHT ADJUST            | 1    |
| 48   | 58325      | KNOB, HGT ADJ PUSH BUTTON        | 1    |
| 49   | 58329      | GRIP, .750 OD W/ HOLE            | 1    |
| 50   | 58335-953  | BRKT, CABLE RETAIN               | 1    |
| 51   | 39298      | PULLEY, .906X.305 NYLON          | 1    |
| 52   | 58336      | BOLT, .375X .375 HSSH 1/4-20     | 1    |
| 53   | 01502      | NUT, 1/4-20 REGHEXCTRLK          | 1    |
| 54   | 300341     | CABLE, LIFT 21.70 F-5 20X8-8     | 1    |
| 55   | 300310     | PIN,CLEVIS .310DIA+.475LG        | 1    |
| 56   | 300311     | RING, RET E .31X.24              | 1    |
| 57   | 0120375    | NUT, 1/4-20 REGHEX               | 1    |
| 58   | 300298-953 | CLEVIS                           | 1    |
| 59   | 0439455    | SCREW, 5/16-18X .56PHPNMA BKPH   | 1    |
| 60   | 301551     | WASHER, .344ID X1.50DX.09 CU BPH | 1    |
| 61   | 0120373    | NUT, 5/16-18 SQ                  | 1    |
| 62   | 39298      | PULLEY, .906X.305 NYLON          | 1    |
| 63   | 300317     | PIN, CLEVIS .38 DIA X1.00 LG     | 1    |
| 64   | 8260       | PIN, HAIR .091 DIA X1.66LG       | 1    |
| 65   | 300703-953 | CLEVIS, LIFT CABLE               | 1    |
| 66   | 0120372    | NUT, 1/4-20 REGSQ                | 1    |
| 67   | 39522      | PIN, CLEVIS .312 X .812          | 1    |
| 68   | 121222     | PIN, COTTER .090/.086X.75LG      | 1    |
| 69   | 300335     | LIFT COVER-.39" F5               | 1    |
| 70   | 0300340    | SCREW, #10 X .75 HHPLAST         | 3    |

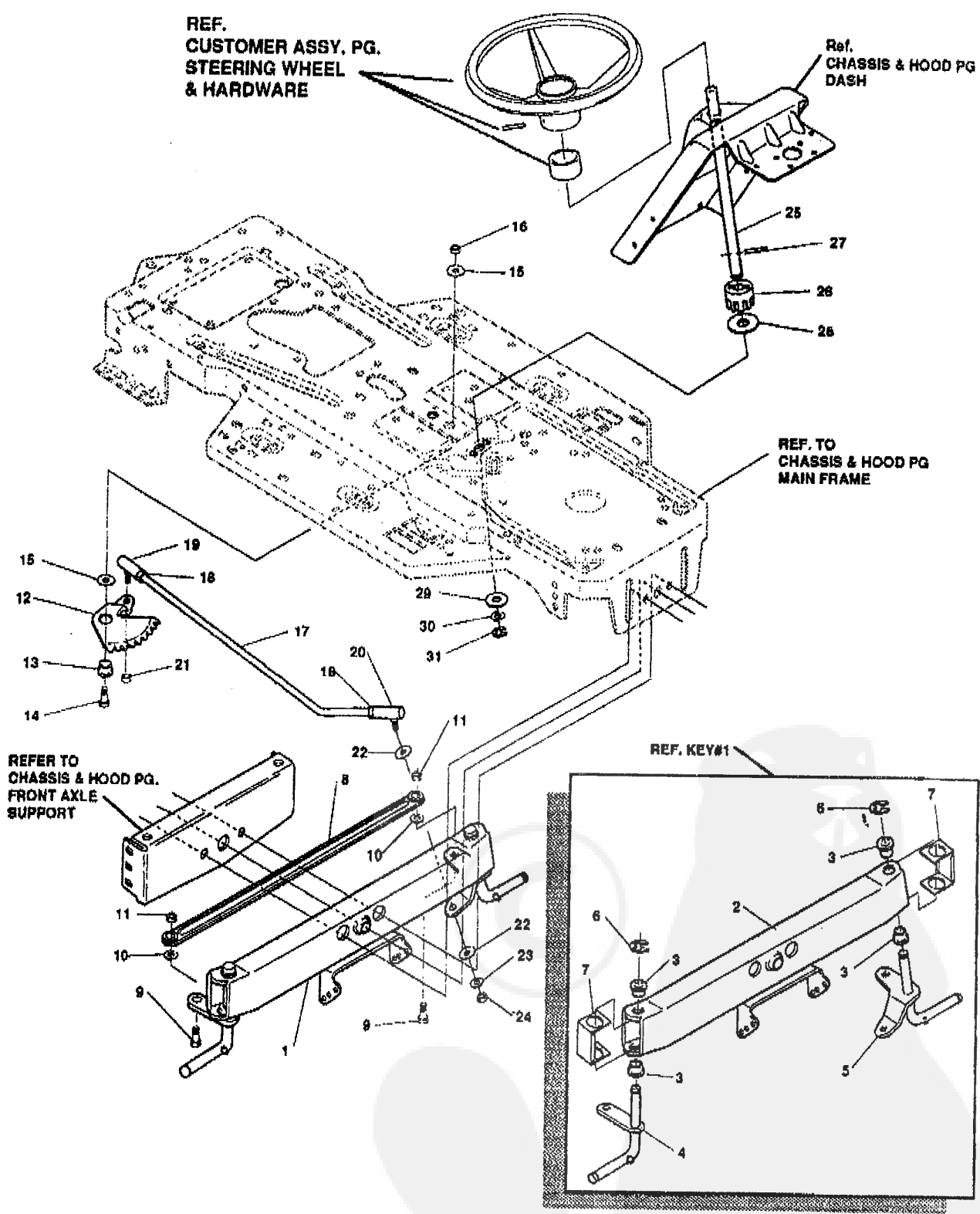
\*STANDARD HARDWARE ITEMS

**TRACTEUR TONDEUSE 40" MODELE C3560-530**

**ENSEMBLE DIRECTION AVANT**

REF.  
CUSTOMER ASSY. PG.  
STEERING WHEEL  
& HARDWARE

Ref.  
CHASSIS & HOOD PG  
DASH



UTILISEZ DES PIECES D'ORIGINE POUR CON-  
SERVER L'APPLICATION DE LA GARANTIE.

TOUTES LES PIECES NON  
REFEREES SONT  
INTERCHANGEABLES AVEC  
LEURS OPPOSEES.

317129A

## TRACTEUR TONDEUSE 40" MODELE C3560-530

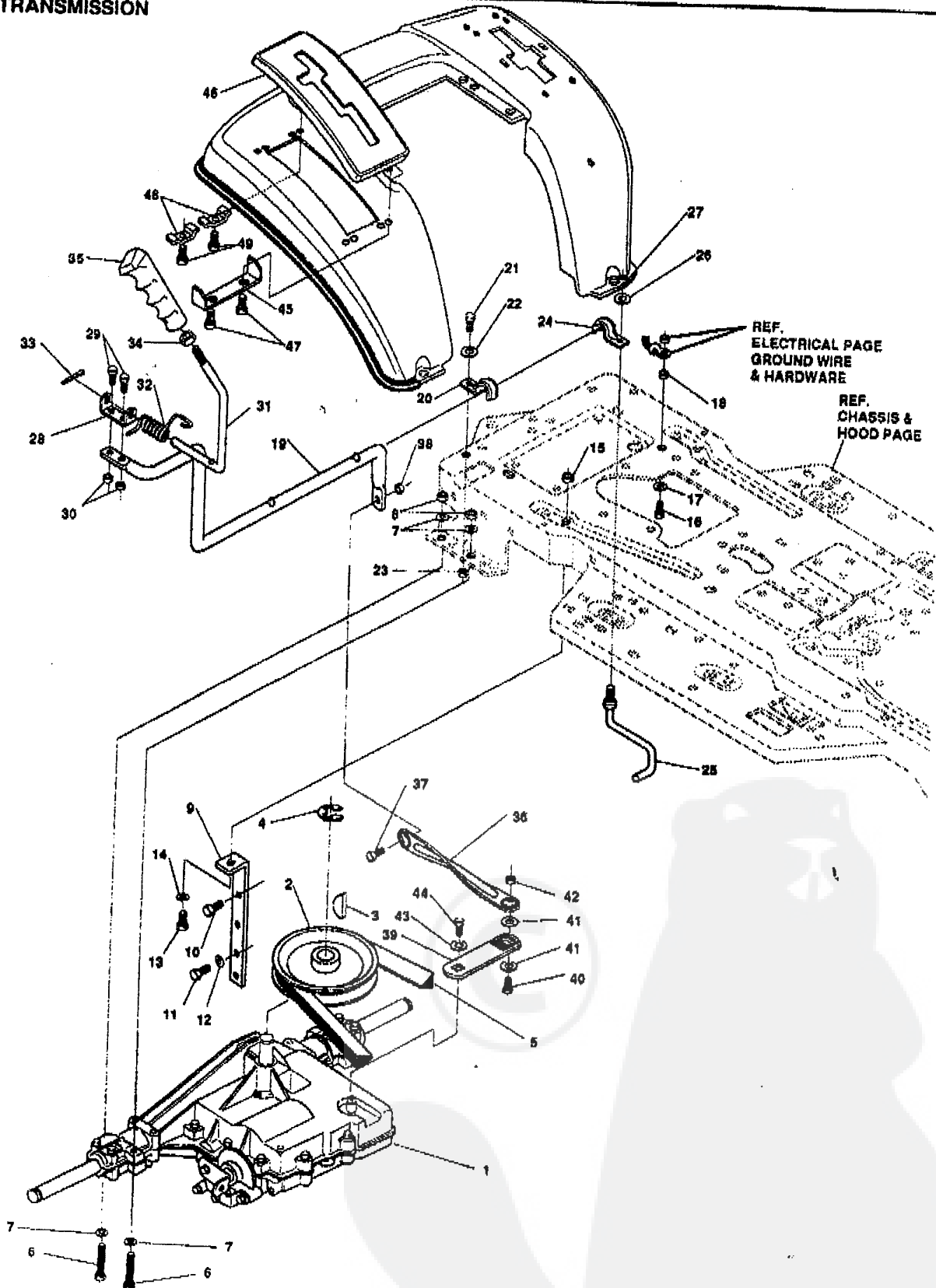
| key# | part#   | description                    | qty. |
|------|---------|--------------------------------|------|
| 1    | *       | AXLE,FRONT ASSY SUS LF         | 1    |
| 2    | 300272  | ASSY FRONT AXLE SUSPENDED      | 1    |
| 3    | 52407   | SPINDLE BEARING                | 4    |
| 4    | 9180    | ASSY,SPINDLE,RH                | 1    |
| 5    | 314088  | ASSY,SPINDLE,LH                | 1    |
| 6    | 36625   | RING, RETEX .57X.05TRU5133-75  | 2    |
| 7    | 53373   | AXLE COVER                     | 2    |
| 8    | 304590  | TIE ROD ASSY 19.81LG           | 1    |
| 9    | ◊180128 | SCREW, 3/8-16X1.75 HHC         | 2    |
| 10   | 120382  | WASHER, REGSPTLK.393X.68X.10   | 2    |
| 11   | ◊1499   | NUT, 3/8-16 REGHXCTRLK         | 2    |
| 12   | 58289   | SECTOR, STEERING LF            | 1    |
| 13   | 52406   | BRNG,FL ECC.510IDX .998ODX .56 | 1    |
| 14   | 180177  | SCREW, 1/2-13X1.50 HHC         | 1    |
| 15   | 22265   | WASHER, FLAT .515X1.38X.119PL  | 2    |
| 16   | ◊1500   | NUT, 1/2-13 REGHCTRLK          | 1    |
| 17   | 58291   | STEERING LINK                  | 1    |
| 18   | ◊124925 | NUT, 3/8-24 REGHEXJAM          | 2    |
| 19   | 57158   | BALL JOINT 3/8 THD SHORT STUD  | 1    |
| 20   | 21275   | BALL JOINT 3/8 TH'D LONG STUD  | 1    |
| 21   | 046692  | NUT, 3/8-24 WDFLHLK WHIZ       | 1    |
| 22   | ◊120396 | WASHER, FLAT .531X1.06X.095    | 2    |
| 23   | ◊120382 | WASHER, REGSPTLK.393X.68X.10   | 1    |
| 24   | ◊120369 | NUT, 3/8-24 REGHEX             | 1    |
| 25   | 58243   | SHAFT, STEERING LF             | 1    |
| 26   | 58244   | PINION, STEERING LF            | 1    |
| 27   | 58274   | PIN,DOWEL .2500 OD+1.75LG      | 1    |
| 28   | 301410  | BRNG, FL .752IDX1.061ODX .24   | 1    |
| 29   | 301398  | WASHER, FORMED1.135X1.53X.12   | 1    |
| 30   | ◊21682  | WASHER, FLAT .765X1.25X.042    | 1    |
| 31   | 36625   | RING, RETEX .57X.05TRU5133-75  | 1    |

\* Order Individual Parts.

◊ Indicates STANDARD HARDWARE ITEMS.

## TRACTEUR TONDEUSE 40" MODELE C3560-530

## TRANSMISSION



UTILISEZ DES PIÈCES D'ORIGINE POUR CONSERVER L'APPLICATION DE LA GARANTIE.

TOUTES LES PIÈCES NON RÉFÉREES SONT INTERCHANGEABLES AVEC LEURS OPPOSÉS.

319948C



## TRACTEUR TONDEUSE 40" MODELE C3560-530

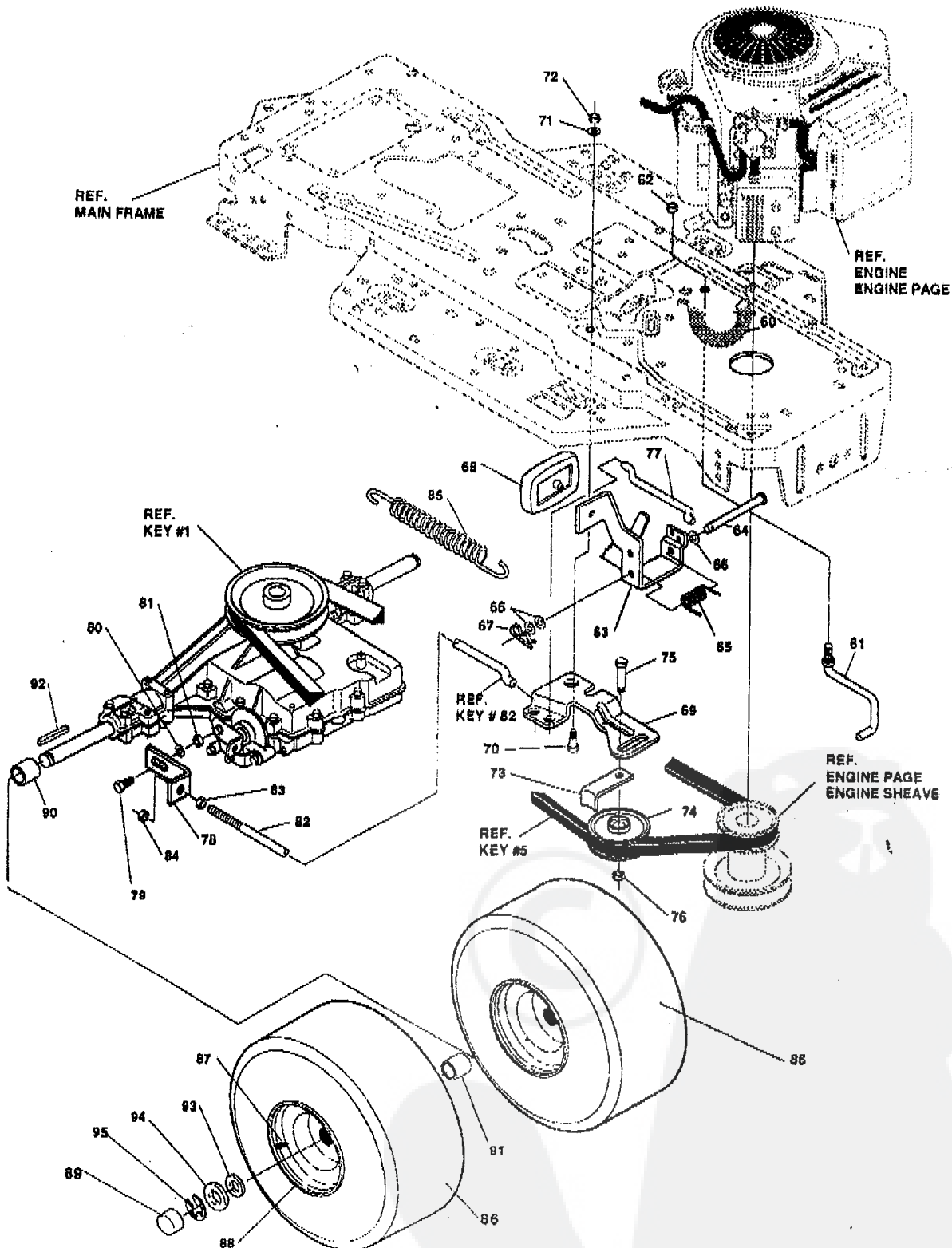
| key# | part#      | description                           | qty. |
|------|------------|---------------------------------------|------|
| 1    |            | TRANSAXLE FOOTE 4360-6SPHD (SEE NOTE) | 1    |
| 2    | 302745     | PULLEY, V 4L 6.60 OD                  | 1    |
| 3    | 3021       | KEY, WDRF 606 .750X.187X.312          | 1    |
| 4    | 22053      | RING, RETEX .58X.04TRUS100-62         | 1    |
| 5    | 314120     | BELT, V 4L 87.25 4WS LF               | 1    |
| 6    | 180112     | SCREW, 5/16-18X2.75 HHC               | 4    |
| 7    | 0120393    | WASHER, FLAT .344X .69X.065           | 8    |
| 8    | 01498*     | NUT, 5/16-18 REGHEXCTRK               | 4    |
| 9    | 323471     | BRACKET, STABILIZER                   | 1    |
| 10   | 050947     | SCREW, 3/8-16X1.25 WAHTAP             | 1    |
| 11   | 035498     | SCREW, 5/16-18X .75 WAHTAP            | 1    |
| 12   | 120638     | WASHER, HVSP TLK .328X.60X.09         | 1    |
| 13   | 0122017    | SCREW, 5/16-18X1.00 HHC               | 1    |
| 14   | 0120393    | WASHER, FLAT .344X .69X.065           | 1    |
| 15   | 01498      | NUT, 5/16-18 REGHEXCTRK               | 1    |
| 16   | 0122007    | SCREW, 5/16-18X .75 HHC               | 1    |
| 17   | 138538     | WASHER, REGINTLK.320X.61X.03          | 1    |
| 18   | 01498      | NUT, 5/16-18 REGHEXCTRK               | 1    |
| 19   | 319111     | LEVER, SHIFT, LWR 4360 LF             | 1    |
| 20   | 310347-853 | CLIP-SHIFT LEVER .62 ROD              | 1    |
| 21   | 0180077    | SCREW, 5/16-18X .75 HHC               | 1    |
| 22   | 996416     | WASHER, FLAT .391X1.00X.125           | 1    |
| 23   | 01498      | NUT, 5/16-18 REGHEXCTRK               | 1    |
| 24   | 310347-853 | CLIP-SHIFT LEVER .62 ROD              | 1    |
| 25   | 57259      | GUIDE, BELT 5/16-18THD                | 1    |
| 26   | 996416     | WASHER, FLAT .391X1.00X.125           | 1    |
| 27   | 01498      | NUT, 5/16-18 REGHEXCTRK               | 1    |
| 28   | 310213-953 | BRACKET, PIVOT SHIFT LEVER            | 1    |
| 29   | 0180018    | SCREW, 1/4-20X .62 HHC                | 2    |
| 30   | 01502      | NUT, 1/4-20 REGHEXCTRK                | 2    |
| 31   | 309635     | LEVER, SHIFT UPPER SF 1/2-13TH        | 1    |
| 32   | 310265     | SPRING, TORS. .56X.95X.095            | 1    |
| 33   | 137185     | PIN, COTTER .125 DIA X1.00LG          | 1    |
| 34   | 0120238    | NUT, 1/2-13 HEXJAM                    | 1    |
| 35   | 306680     | HANDLE 1/2-13                         | 1    |
| 36   | 314971     | LINK TIE ROD SHIFTER 7.746C/L         | 1    |
| 37   | 0180124    | SCREW, 3/8-16X1.25 HHC                | 1    |
| 38   | 01499      | NUT, 3/8-16 REGHXCTRK                 | 1    |
| 39   | 310758-955 | BRACKET, SHIFT 5SP SF FEN HT          | 1    |
| 40   | 0180124    | SCREW, 3/8-16X1.25 HHC                | 1    |
| 41   | 120394     | WASHER, FLAT .406X .81X.065           | 2    |
| 42   | 01499      | NUT, 3/8-16 REGHXCTRK                 | 1    |
| 43   | 57157      | WASHER, .750X.250 SP-TRANSAXLE        | 1    |
| 44   | 056255     | SCREW, 1/4-28X .75 NYLHHC             | 1    |
| 45   | 311267-853 | BRACKET COVER                         | 1    |
| 46   | 311209     | COVER PLASTIC                         | 1    |
| 47   | 311331     | SCREW, 1/4-15X.44/.53 HILOHHWA        | 2    |
| 48   | 300284-953 | CLAMP SPRING                          | 2    |
| 49   | 311331     | SCREW, 1/4-15X.44/.53 HILOHHWA        | 2    |

◊ Indicates STANDARD HARDWARE ITEMS.

NOTE: CONTACT YOUR NEAREST FOOTE TRANSAXLE DEALER FOR PARTS AND SERVICE.

## TRACTEUR TONDEUSE 40" MODELE C3560-530

## TRANSMISSION



UTILISEZ DES PIÈCES D'ORIGINE POUR CONSERVER L'APPLICATION DE LA GARANTIE.

TOUTES LES PIÈCES NON RÉFÉREES SONT INTERCHANGEABLES AVEC LEURS OPPOSÉS.

319948C

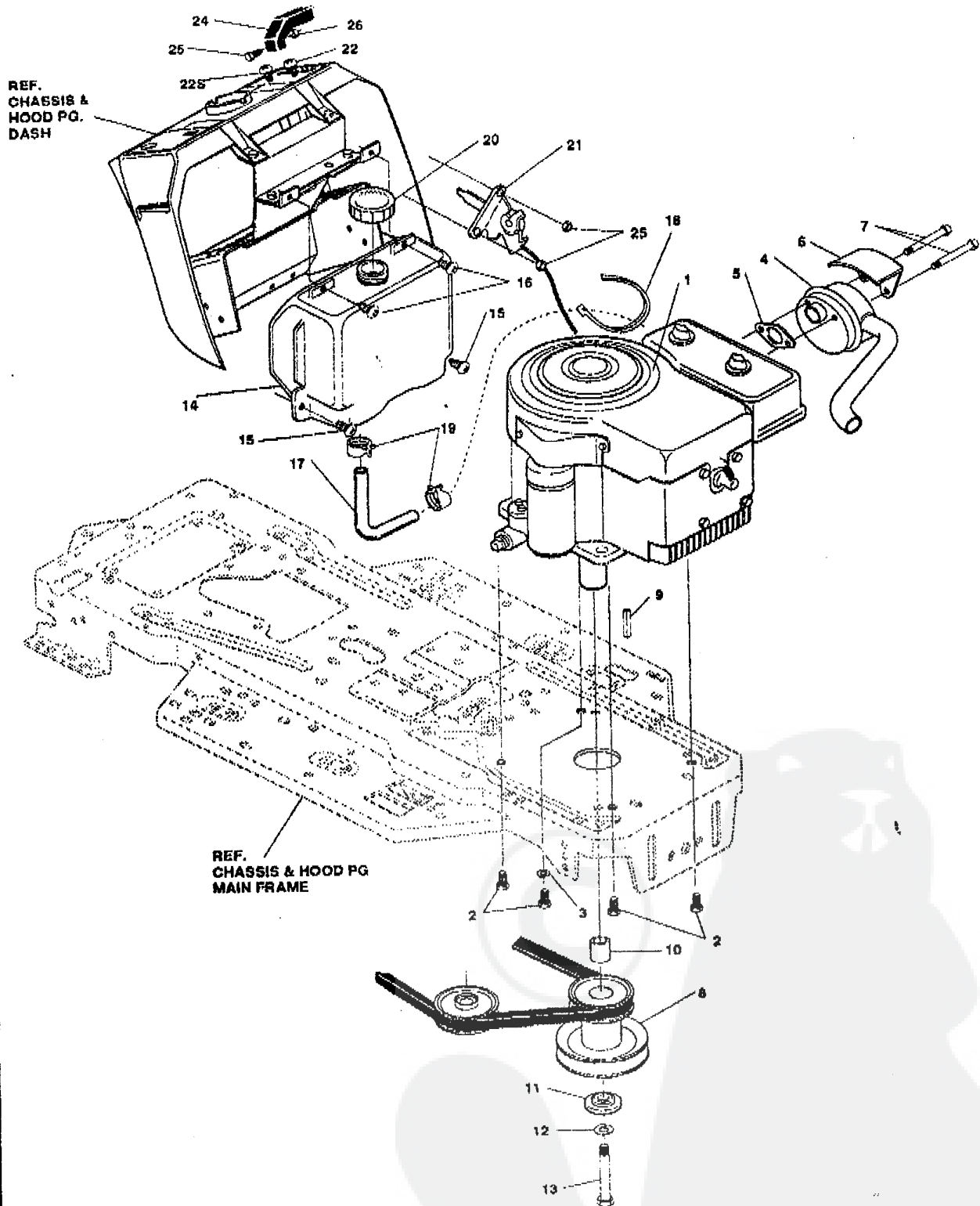
## TRACTEUR TONDEUSE 40" MODELE C3560-530

| key# | part#   | description                    | qty. |
|------|---------|--------------------------------|------|
| 60   | 321514  | SPRING BIAS DRAGLINK           | 1    |
| 61   | 304016  | GUIDE BELT                     | 1    |
| 62   | 1498    | NUT, 5/16-18 REGHEXCTRLK       | 1    |
| 63   | 300308  | PEDAL ASSY.BRAKE/CLUTCH LF     | 1    |
| 64   | 319675  | PIN CLEVIS                     | 1    |
| 65   | 57847   | SPRING, BRAKE PEDAL            | 1    |
| 66   | 2968    | WASHER, FLAT .504X.75X.059     | 3    |
| 67   | 56180   | PIN,HAIR                       | 1    |
| 68   | 48160   | PAD, CLUTCH BRAKE W/PRINTING   | 1    |
| 69   | 300154  | ARM,IDLER TRACTION DR. LF      | 1    |
| 70   | 300793  | BOLT, .625X.135 HSH 5/16-18    | 1    |
| 71   | 45602   | WASHER, FLAT .333X.87X.119     | 1    |
| 72   | 01498   | NUT, 5/16-18 REGHEXCTRLK       | 1    |
| 73   | 39659   | RETAINER,BELT                  | 1    |
| 74   | 35374   | PULLEY, IDLER V4L 3.05X .62    | 1    |
| 75   | 45892   | BOLT, 3/8-16X1.50 CARR         | 1    |
| 76   | 01499   | NUT, 3/8-16 REGHXCTRLK         | 1    |
| 77   | 57204   | ROD, CLUTCH                    | 1    |
| 78   | 57217   | BRACKET, BRAKE ROD             | 1    |
| 79   | 20507   | BOLT, .437X.156 HSH 5/16-18    | 1    |
| 80   | 45602   | WASHER, FLAT .333X.87X.119     | 1    |
| 81   | 01498   | NUT, 5/16-18 REGHEXCTRLK       | 1    |
| 82   | 313659  | ROD, BRAKE P920 4WS LF 23.50   | 1    |
| 83   | 0271184 | NUT, 5/16-18 HEXKEPS           | 1    |
| 84   | 01498   | NUT, 5/16-18 REGHEXCTRLK       | 1    |
| 85   | 56359   | SPRING, CLUTCH .113X.750X8.75  | 1    |
| 86   | 58276   | TIRE,PU 20X10-8TURF            | 2    |
| 87   | 24167   | VALVE STEM                     | 1    |
| 88   | 301366  | RIM, WHEEL 20X8.00             | 1    |
| 89   | 40394   | HUB CAP, 1.500ID X 7/8LG       | 2    |
| 90   | 57479   | SPACER, .75 X 1.25 X 1.32      | 2    |
| 91   | 301565  | SPACER,SLVE .75IDX1.25OD X.6TK | 2    |
| 92   | 52928   | KEY, SQUARE .1875OX2.25LG      | 2    |
| 93   | 0642    | WASHER, FLAT .755X1.31X.075    | 4    |
| 94   | 042815  | WASHER, FLAT .755X1.59X.07     | 2    |
| 95   | 36625   | RING, RETEX .57X.05TRU5133-75  | 2    |

◊ Indicates STANDARD HARDWARE ITEMS.

## TRACTEUR TONDEUSE 40" MODELE C3560-530

## MOTEUR ENSEMBLE



UTILISEZ DES PIÈCES D'ORIGINE POUR CONSERVER L'APPLICATION DE LA GARANTIE.

TOUTES LES PIÈCES NON  
REFERÉES SONT  
INTERCHANGEABLES AVEC  
LEURS OPPOSÉS.

322768A

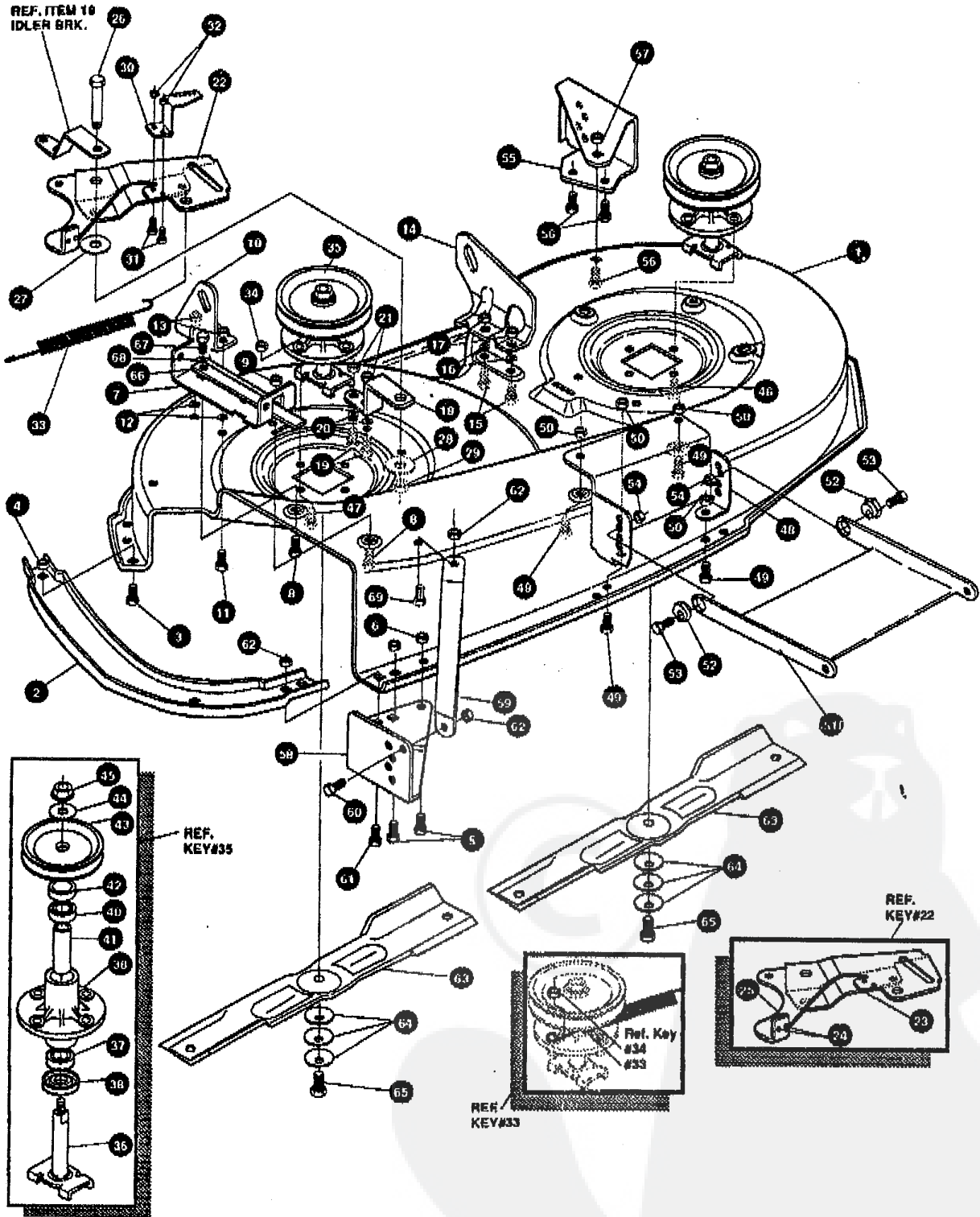
**TRACTEUR TONDEUSE 40" MODELE C3560-530**

| key# | part#  | description                             | qty. |
|------|--------|---|------|
| 1    | ENGINE | 12 HP B&S 1/2 ECONO (SEE ENGINE MANUAL) | 1    |
| 2    | 50947  | SCREW, 3/8-16X1.25 WAHTAP               | 4    |
| 3    | 138489 | WASHER, EXLK .384X.69X.04               | 1    |
| 4    | 305367 | MUFFLER-LO TONE NELSON EXPORT           | 1    |
| 5    | 46708  | GASKET, MUFFLER                         | 1    |
| 6    | 54767  | SHIELD, HEAT, FOR ROUND MUFFLER         | 1    |
| 7    | 173063 | SCREW, 5/16-18X3.50 HHC                 | 2    |
| 8    | 310250 | PULLEY ENG. V3L 4.00 OFFSET             | 1    |
| 9    | 303151 | KEY, SQUARE .260SQX5.00LG               | 1    |
| 10   | 304246 | SPACER, 1.01X1.484 ENGIN PULLEY         | 1    |
| 11   | 56431  | WASHER, .880IDX1.380DX.437PILOT         | 1    |
| 12   | 120383 | WASHER, REGSPTLK.458X.78X.12            | 1    |
| 13   | 433146 | SCREW, 7/16-20X4.25 HHC                 | 1    |
| 14   | 314991 | TANK, FUEL 2-GAL                        | 1    |
| 15   | 300303 | SCREW, .25X.76X.76HHWAPLASTITE          | 2    |
| 16   | 995346 | SCREW, 1/4-20X .50 WAHTAP               | 2    |
| 17   | 47452  | GAS LINE .25ID                          | 14'  |
| 18   | 57444  | WIRE TIE                                | 1    |
| 19   | 48672  | CLAMP, FUEL LINE                        | 2    |
| 20   | 300304 | CAP, FUEL - 2.0 THROAT                  | 1    |
| 21   | 303159 | THROTTLE, CONTROL                       | 1    |
| 22   | 320553 | SCREW, 10-24X .63PHPNMA                 | 2    |
| 23   | 271166 | NUT, #10-24 HEXKEPS                     | 2    |
| 24   | 300508 | KNOB, THROTTLE CONTROL HANDGRIP         | 1    |
| 25   | 159585 | SCREW, #8-32X .38 PHPNMA                | 1    |
| 26   | 120622 | NUT, #8-32 REGHX                        | 1    |

• STANDARD HARDWARE ITEMS.

# CARTER DE TONDEUSE

REF. ITEM 10  
IDLER BRK.



UTILISEZ DES PIÈCES D'ORIGINE POUR CONSERVER L'APPLICATION DE LA GARANTIE.

TOUTES LES PIÈCES NON RÉFÉRÉES SONT INTERCHANGEABLES AVEC LEURS OPPOSÉS.

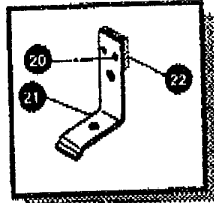
324063A

## TRACTEUR TONDEUSE 40" MODELE C3560-530

| key# | part#      | description                     | qty. |
|------|------------|---------------------------------|------|
| 1.   | 324063-853 | MS MOWER DECKS, 40" LF/EURO     | 1    |
| 2.   | 304102     | TOE GUARD                       | 1    |
| 3.   | 180075     | SCREW, 5/16-18X .63 HHC GR5     | 1    |
| 4.   | 1498       | NUT, 5/16-18 REGHEXCTRLK        | 1    |
| 5.   | 180073     | SCREW, 5/16-18X .50 HHC GR5     | 2    |
| 6.   | 1498       | NUT, 5/16-18 REGHEXCTRLK        | 2    |
| 7.   | 302364     | BRACKET CHUTE MOUNT             | 1    |
| 8.   | 180075     | SCREW, 5/16-18X .63 HHC GR5     | 1    |
| 9.   | 1498       | NUT, 5/16-18 REGHEXCTRLK        | 1    |
| 10.  | 58250      | MS BRACKET,RH LIFT REAR         | 1    |
| 11.  | 180077     | SCREW, 5/16-18X .75 HHC GR5     | 2    |
| 12.  | 120393     | WASHER, FLAT .344X .69X.065     | 2    |
| 13.  | 1498       | NUT, 5/16-18 REGHEXCTRLK        | 2    |
| 14.  | 58251      | MS/MP BRACKET,LH LIFT REAR      | 1    |
| 15.  | 180077     | SCREW, 5/16-18X .75 HHC GR5     | 2    |
| 16.  | 120393     | WASHER, FLAT .344X .69X.065     | 2    |
| 17.  | 1498       | NUT, 5/16-18 REGHEXCTRLK        | 2    |
| 18.  | 302363     | BRACE IDLER                     | 1    |
| 19.  | 180077     | SCREW, 5/16-18X .75 HHC GR5     | 2    |
| 20.  | 120393     | WASHER, FLAT .344X .69X.065     | 2    |
| 21.  | 44108      | NUT, 5/16-18 HWDFLOTRK          | 2    |
| 22.  | 320576     | SF IDLER ARM ASSEMBLY           | 1    |
| 23.  | 322116     | MP/MM ARM IDLER 40/43"DECK      | 1    |
| 24.  | 41601      | RIVET, OVSET .187DIA X .50LG ST | 2    |
| 25.  | 306973     | BRAKE PAD - HARD - 232AF        | 1    |
| 26.  | 304420     | BOLT, .500X2.15 HXHDOPSH GR2-   | 1    |
| 27.  | 996307     | WASHER, FLAT .391X1.00X.209     | 1    |
| 28.  | 996416     | WASHER, FLAT .391X1.00X.126     | 2    |
| 29.  | 45171      | NUT, 3/8-16 HWDFL WHIZ-LOCK ZN  | 1    |
| 30.  | 300700     | MP BRACKET, EXTENSION IDLER     | 1    |
| 31.  | 120228     | SCREW, 5/16-18X .63 HHC GR2     | 2    |
| 32.  | 1498       | NUT, 5/16-18 REGHEXCTRLK        | 2    |
| 33.  | 35410      | SPRING .071 X .62 X 4.37        | 1    |
| 34.  | 1498       | NUT, 5/16-18 REGHEXCTRLK        | 1    |
| 35.  | 56424      | SP/SF QUILL ASSY, 38/39/40/43   | 2    |
| 36.  | 56425      | WS SHAFT/SADDLE 36"             | 1    |
| 37.  | 49562      | BRNG, BALL .669IDX1.575ODX.472  | 1    |
| 38.  | 50616      | MS DUST SHIELD                  | 1    |
| 39.  | 55547      | QUILL CASTING (1046)            | 1    |
| 40.  | 49562      | BRNG, BALL .669IDX1.575ODX.472  | 1    |
| 41.  | 50818      | SPACER, SLEV .669X .98X3.797    | 1    |
| 42.  | 51449      | SPACER, SLEV .672X .93X .438PM  | 1    |
| 43.  | 56390      | BF/BP PULLEY,26/36" QUILL V5L   | 1    |
| 44.  | 56365      | WASHER, SPECIAL QUILL           | 1    |
| 45.  | 1282       | NUT, 7/16-20 WDFLLK             | 1    |
| 46.  | 50634      | SCREW, 5/16-18X .88 WAHHTAP     | 7    |
| 47.  | 300345     | SCREW, 5/16-18X1.38 WATAPGR2    | 1    |
| 48.  | 318445     | MS BRACKET,40 LF FRONT DECK     | 1    |
| 49.  | 180075     | SCREW, 5/16-18X .63 HHC GR5     | 4    |
| 50.  | 1498       | NUT, 5/16-18 REGHEXCTRLK        | 4    |
| 51.  | 58305      | MS,MP BRACKET,LINK DECK FRONT   | 1    |
| 52.  | 58247      | ADJUSTING NUT                   | 2    |
| 53.  | 122017     | SCREW, 5/16-18X1.00 HHC GR2     | 2    |
| 54.  | 1498       | NUT, 5/16-18 REGHEXCTRLK        | 2    |
| 55.  | 304426     | BRACKET,GAGE WHEEL L.H.         | 1    |
| 56.  | 180075     | SCREW, 5/16-18X .63 HHC GR5     | 3    |
| 57.  | 1498       | NUT, 5/16-18 REGHEXCTRLK        | 3    |
| 58.  | 313925     | BRACKET,GAGE WHEEL R.H. FRNT    | 1    |
| 59.  | 314282     | BRACKET,STABILIZER              | 1    |
| 60.  | 180075     | SCREW, 5/16-18X .63 HHC GR5     | 1    |
| 61.  | 180081     | SCREW, 5/16-18X1.25 HHC GR5     | 1    |
| 62.  | 1498       | NUT, 5/16-18 REGHEXCTRLK        | 2    |
| 63.  | 303065     | BLADE, 20.32 HIGH-LIFT          | 2    |
| 64.  | 2483       | WASHER,.39IDX1.25DX.07 BELLVIL  | 6    |
| 65.  | 39573      | SCREW, 3/8-24X1.00 NYLHHCGR5    | 2    |
| 66.  | 58320      | LEVER ASSY                      | 1    |
| 67.  | 122017     | SCREW, 5/16-18X1.00 HHC GR2     | 1    |
| 68.  | 120393     | WASHER, FLAT .344X .69X.065     | 1    |
| 69.  | 1498       | NUT, 5/16-18 REGHEXCTRLK        | 1    |

# TRACTEUR TONDEUSE 40" MODELE C3560-530

## CARTER DE TONDEUSE



REF. KEY#19

SEE DWG. 318345 FOR PARTS ASSY. OF PAINTED DECK

REF. CUSTOMER ASSY. PG.

REF. IDLER ARM

REF. CUSTOMER ASSY. PG.

REF. CUSTOMER ASSY. PG.

REF. CUSTOMER ASSY. PG.

REF. CUSTOMER ASSY. PG.

REF. CUSTOMER ASSY. PG.

TOUTES LES PIECES NON REFEREES SONT INTERCHANGEABLES AVEC LEURS OPPOSEES.

UTILISEZ DES PIECES D'ORIGINE POUR CONSERVER L'APPLICATION DE LA GARANTIE.

324064A



## TRACTEUR TONDEUSE 40" MODELE C3560-530

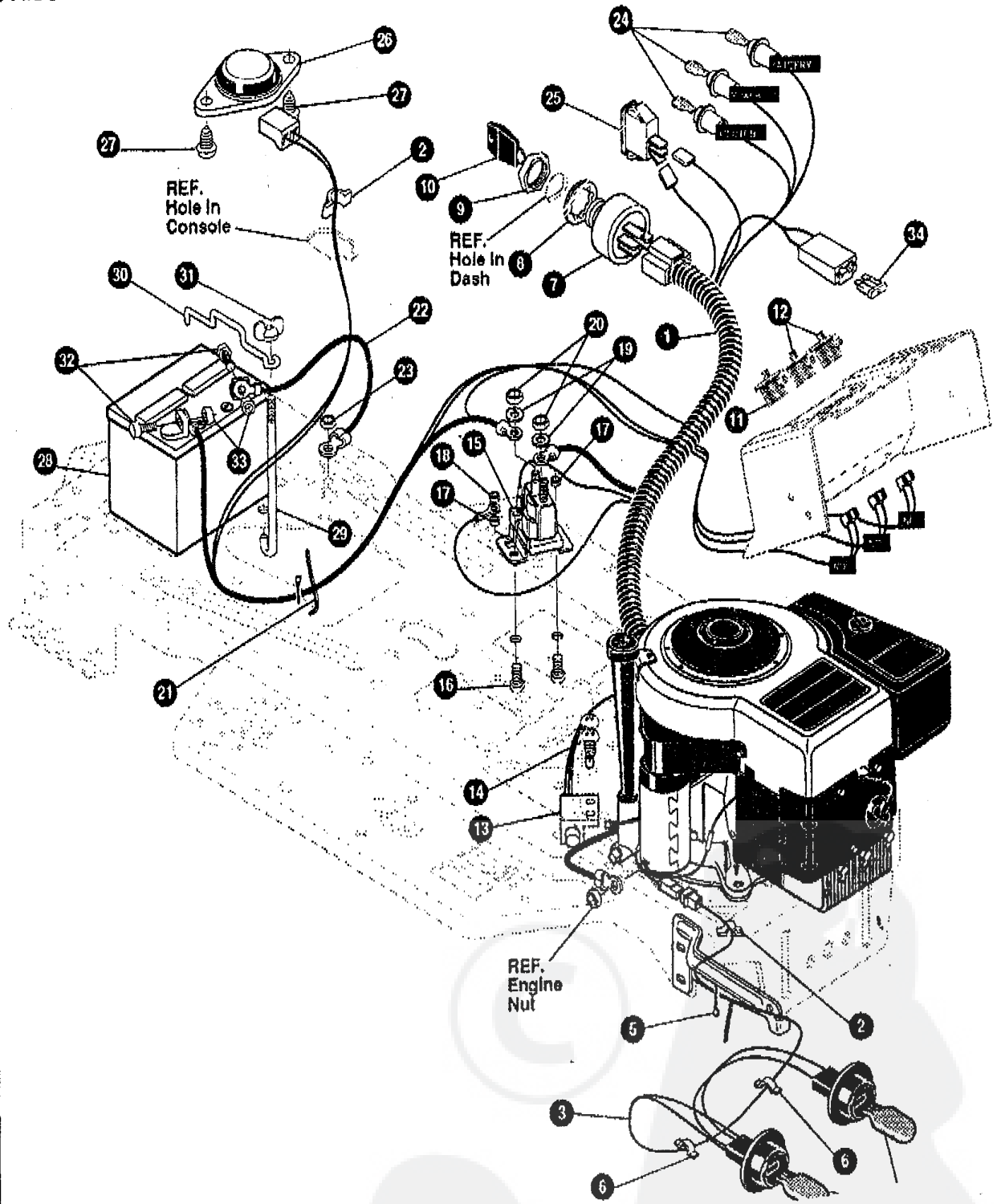
| key# | part#      | description qty.                   |   |
|------|------------|------------------------------------|---|
| 1.   | *          | DECK,40" MOWER 2-WH ASSEMBLY       | 1 |
| 2.   | 58306      | ROD, DECK HITCH                    | 1 |
| 3.   | 8260       | PIN, HAIR .091 DIA X 1.66 LG       | 1 |
| 4.   | 57325      | BOIT, 3/8-16 X 2.00 CARR           | 1 |
| 5.   | 25210      | WASHER, FLAT .392 X 1.25 X .09     | 1 |
| 6.   | 300844-053 | RETAINER, BELT                     | 1 |
| 7.   | 310326     | PULLEY, IDLER BFF 4.00 WIDE FL     | 1 |
| 8.   | * 996307   | WASHER, FLAT .391 X 1.00 X .209    | 1 |
| 9.   | 120382     | WASHER, REGSPTLK.393 X .68 X .10   | 1 |
| 10.  | * 120377   | NUT, 3/8-16 REGHX                  | 1 |
| 11.  | 314107     | SPRING, TENSION 5.00 LG + 17 LB/IN | 1 |
| 12.  | 319005     | BELT, V 5L 81.00 DECK 40 LF        | 1 |
| 13.  | 302833     | GUARD, BELT LH PLASTIC             | 1 |
| 14.  | * 120228   | SCREW, 5/16-18 X .63 HHC           | 3 |
| 15.  | 120393     | WASHER, FLAT .344 X .69 X .065     | 3 |
| 16.  | * 1498     | NUT, 5/16-18 REGHEXCTRLK           | 3 |
| 17.  | 315396     | ROD, BRAKE 40" LF                  | 1 |
| 18.  | 1502       | NUT, 1/4-20 REGHEXCTRLK            | 1 |
| 19.  | 321828-053 | BLADE BRAKE ASM.                   | 1 |
| 20.  | 135824     | RIVET, TRSET :185 DIA X 41 LG      | 2 |
| 21.  | 304119     | BRAKE ARM                          | 1 |
| 22.  | 306973     | BRAKE PAD                          | 1 |
| 23.  | 120228     | SCREW, 5/16-18 X .63 HHC           | 1 |
| 24.  | 120393     | WASHER, FLAT .344 X .69 X .065     | 1 |
| 25.  | 1498       | NUT, 5/16-18 REGHEXCTRLK           | 1 |
| 26.  | 42348      | GRIP-LEVER                         | 1 |

\* Order Individual Parts.

\* Indicates STANDARD HARDWARE ITEMS

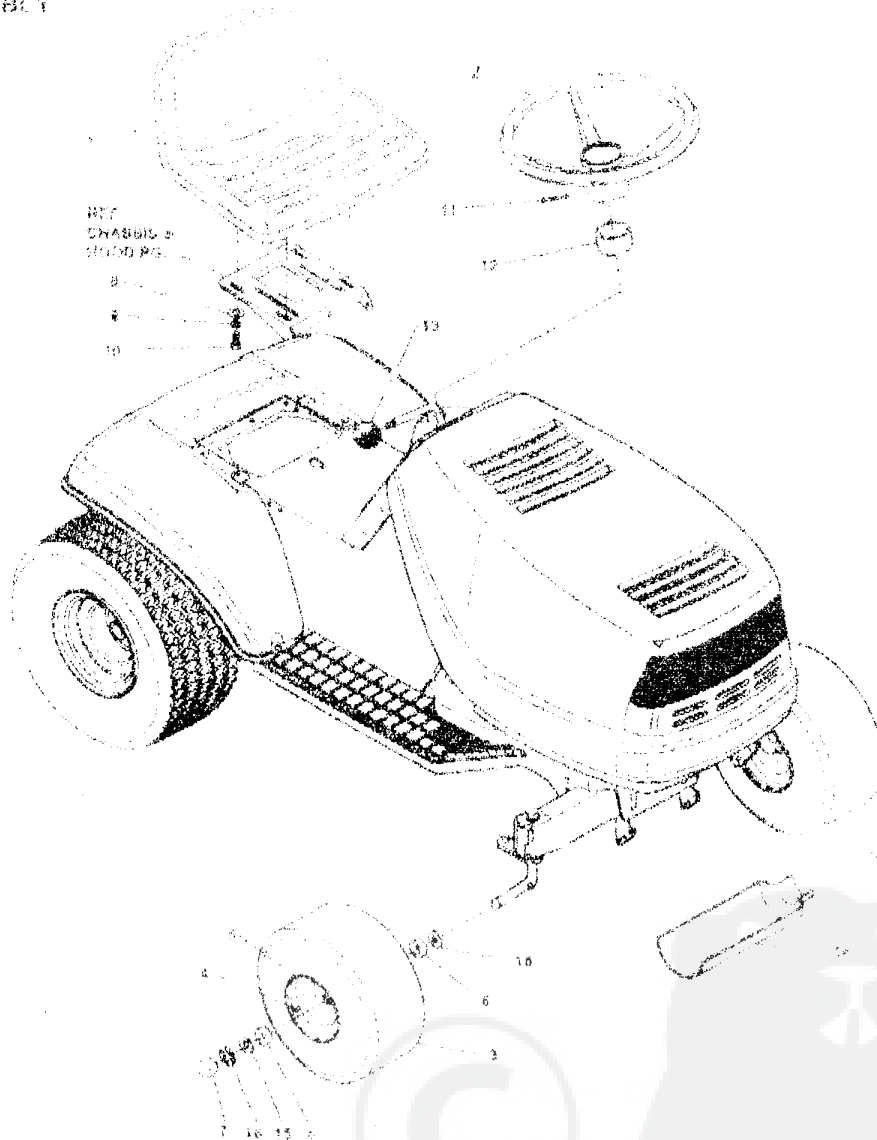
# TRACTEUR TONDEUSE 40" MODELE C3560-530

## FAISCEAU ELECTRIQUE



TRACTEUR TONDEUSE 40" MODELE C3580-530

CUSTOMER ASSEMBLY



CUSTOMER ASSEMBLY VIEW

317890 PARTS BAG ASSY QTY1

| KEY# | PART#  | DESCRIPTION                   | QTY |
|------|--------|-------------------------------|-----|
|      | 57524  | CLAU 450 MICH                 | 1   |
| 2    | 451251 | WHEEL STEERING                | 1   |
| 3    | 39830  | TIRE PU 15X60X8 TUBE          | 2   |
| 4    | 24167  | VALVE STEER                   | 1   |
| 5    | 37829  | WHEEL WRRG                    | 1   |
| 6    | 39279  | BEARING FL 1.3807-75310 PM    | 2   |
| 7    | 40364  | HUB CAP 1.50010 X 2.81G       | 2   |
| 8    | 120393 | WASHER FLAT 34X 60X 065       | 4   |
| 9    | 170832 | WASHER HYSPHIC 328X 60X 09    | 4   |
| 10   | 122007 | SCREW 5/16-18X .75 HRC        | 4   |
| 11   | 456376 | PIN SPRING 255CHAX2 00LG HVPL | 1   |
| 12   | 67212  | COVER STEERING SHAFT          | 1   |
| 13   | 54873  | TROUGH OIL DRAIN              | 1   |
| 14   | 642    | WASHER FLAT 75X1 31X 075      | 4   |
| 15   | 30625  | RING REFLEX 52X OCTAL 5/16 75 | 2   |